


AIDS TO NAVIGATION	PLANE COORDINATES		LATITUDE	LONGITUDE
	X	Y		
LT. BUOY-11 (12/18)	524.262	2,206.335	30°24'06.84"	81°25'06.25"



US Army Corps of Engineers  
Jacksonville District

**SAFETY ON THIS JOB DEPENDS ON YOU**

---

DESIGNED BY: **WRM**  
CHECKED BY: **WRM**  
DATE: **JAN 2019**

PROJECT: **JACKSONVILLE HARBOR, FLORIDA**

DRAWING NO: **11**

SHEET 11 OF 57

---

ANNUAL EXAMINATION SURVEY FY19  
**30, 34, 38, 40 & 42-FOOT PROJECT**

STA. 270+00 THRU STA. 298+00 BAR CUT-3

**PLAN**

---

DEPARTMENT OF THE ARMY  
JACKSONVILLE DISTRICT, CORPS OF ENGINEERS  
JACKSONVILLE, FLORIDA

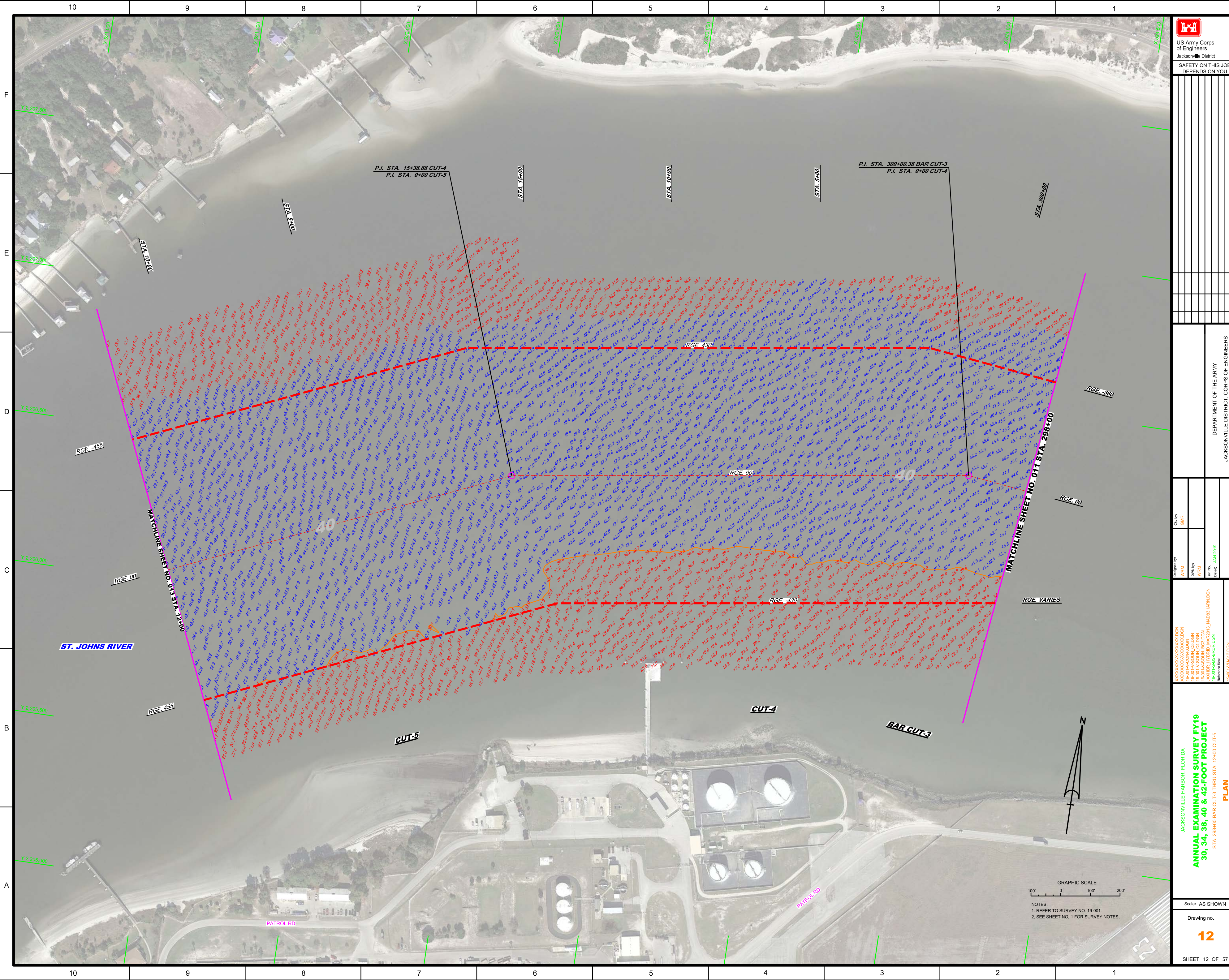
---


Scale: AS SHOWN

Drawing no. **11**

SHEET 11 OF 57





  
 US Army Corps of Engineers  
 Jacksonville District  
 SAFETY ON THIS JOB  
 DEPENDS ON YOU

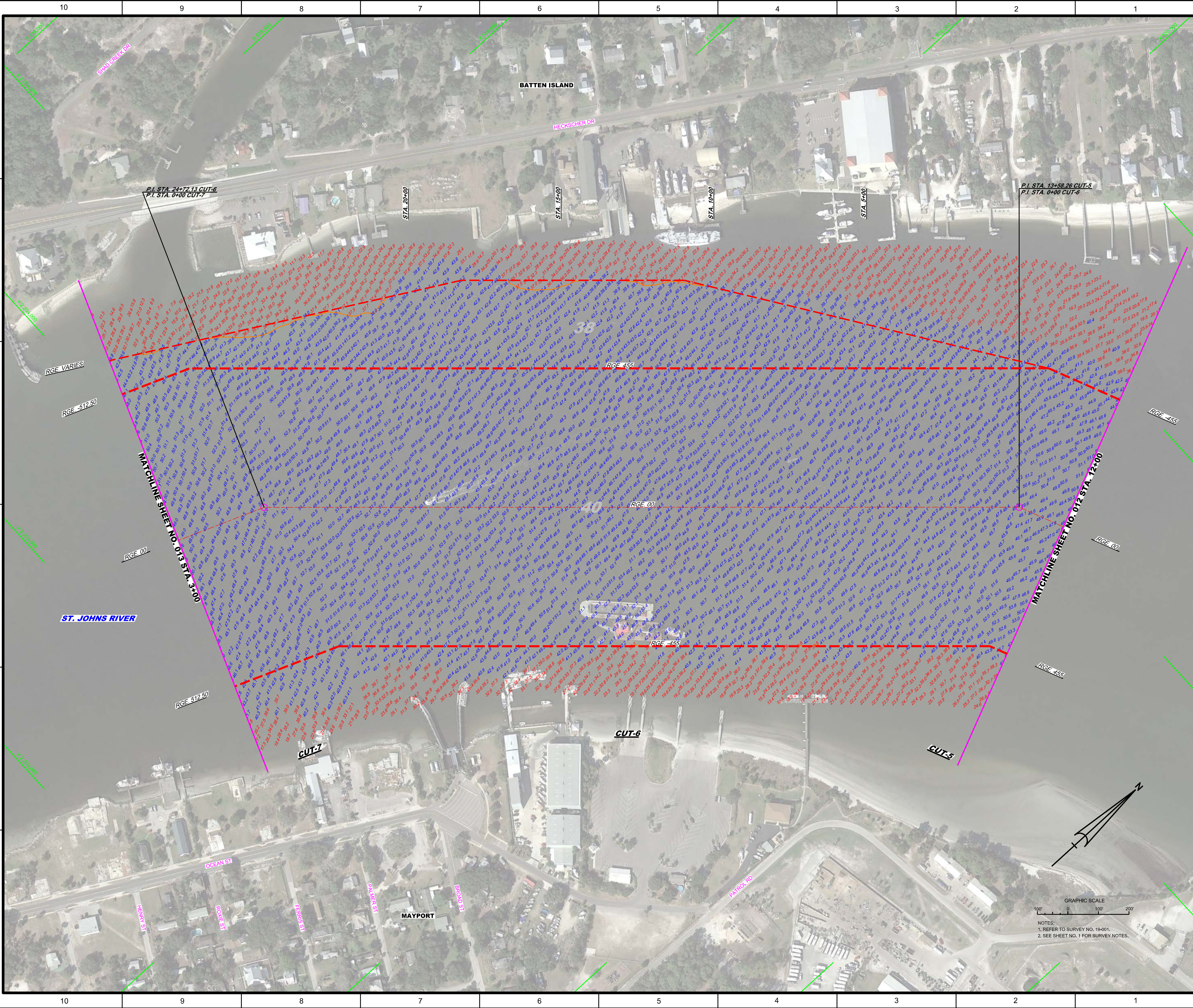
Checked By:	GHK
Designed By:	WRM
Drawn By:	WRM
Reviewed By:	WRM
Date:	JAN 2019

JACKSONVILLE HARBOR, FLORIDA  
**ANNUAL EXAMINATION SURVEY FY19**  
**30, 34, 38, 40 & 42-FOOT PROJECT**  
 STA. 298+00 BAR CUT-3 THRU STA. 12+00 CUT-5  
**PLAN**

Scale: AS SHOWN  
 Drawing No. **12**  
 SHEET 12 OF 57

GRAPHIC SCALE  
 100' 0 100' 200'  
 NOTES:  
 1. REFER TO SURVEY NO. 19-001.  
 2. SEE SHEET NO. 1 FOR SURVEY NOTES.





**US Army Corps of Engineers**  
Jacksonville District  
SAFETY ON THIS JOB  
DEPENDS ON YOU

DESIGNED BY: WRM  
CHECKED BY: GHR  
DATE: JAN 2019

JACKSONVILLE HARBOR, FLORIDA  
ANNUAL EXAMINATION SURVEY FY19  
30, 34, 38, 40 & 42-FOOT PROJECT  
STA. 12+00 CUT-5 THRU STA. 3+00 CUT-7  
PLAN

Scale: AS SHOWN  
Drawing no. **13**  
SHEET 13 OF 57

DEPARTMENT OF THE ARMY  
JACKSONVILLE DISTRICT, CORPS OF ENGINEERS  
JACKSONVILLE, FLORIDA







US Army Corps of Engineers  
Jacksonville District  
SAFETY ON THIS JOB  
DEPENDS ON YOU

DEPARTMENT OF THE ARMY  
JACKSONVILLE DISTRICT, CORPS OF ENGINEERS  
JACKSONVILLE, FLORIDA

Checked By: GHR  
Designed By: WRM  
Drawn By: WRM  
File No: 15  
Date: JAN 2019

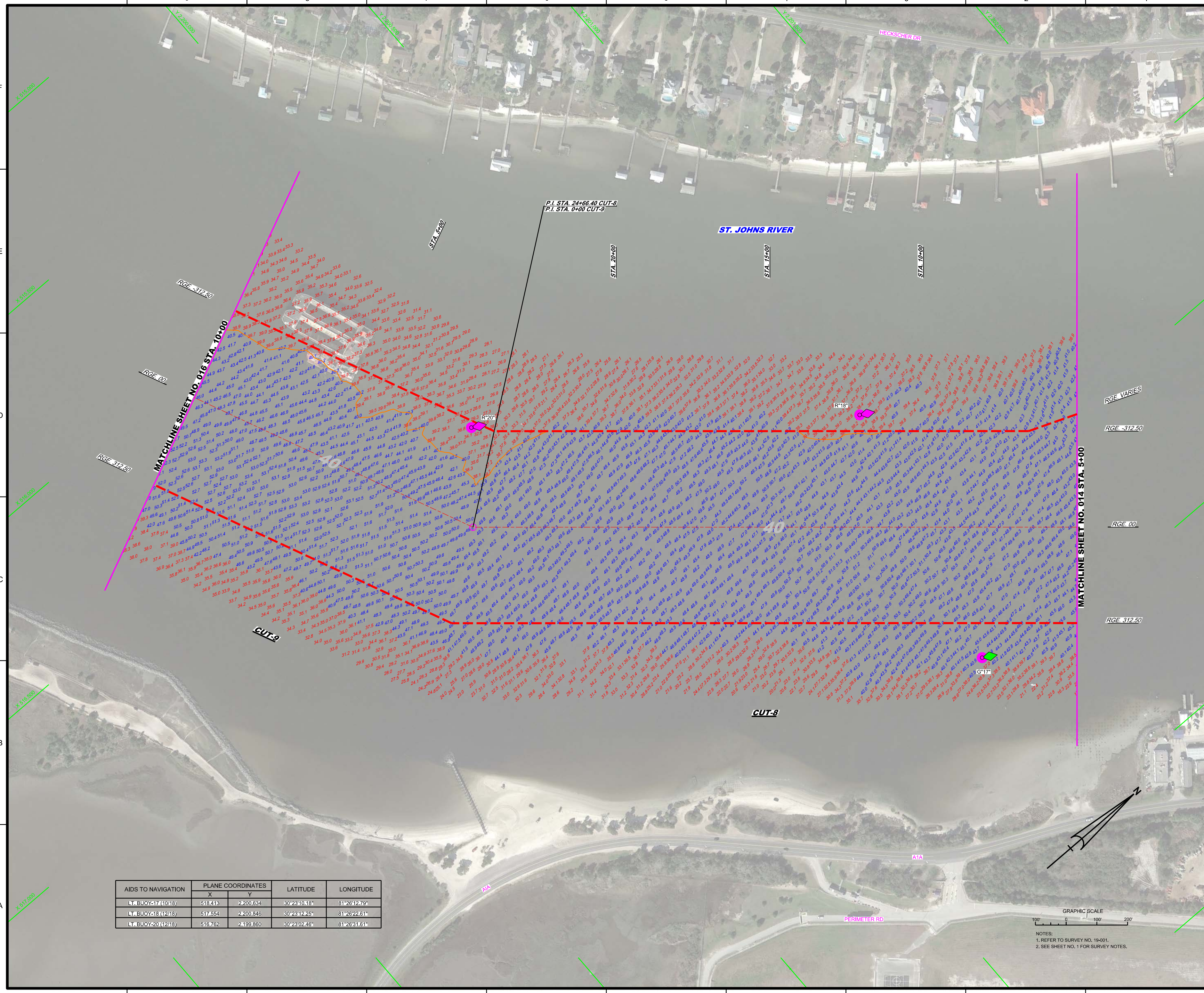
JACKSONVILLE HARBOR, FLORIDA  
ANNUAL EXAMINATION SURVEY FY19  
30, 34, 38, 40 & 42-FOOT PROJECT  
STA. 5+00 CUT-8 THRU STA. 10+00 CUT-9  
PLAN

Scale: AS SHOWN  
Drawing no. 15  
SHEET 15 OF 57

AIDS TO NAVIGATION	PLANE COORDINATES		LATITUDE	LONGITUDE
	X	Y		
LT. BUOY-17 (10/18)	518,413	2200,634	30°23'10.18"	81°26'12.79"
LT. BUOY-18 (12/18)	517,554	2200,846	30°23'12.25"	81°26'22.61"
LT. BUOY-20 (12/18)	516,762	2199,860	30°23'02.46"	81°26'31.61"



NOTES:  
1. REFER TO SURVEY NO. 19-3001.  
2. SEE SHEET NO. 1 FOR SURVEY NOTES.



10 9 8 7 6 5 4 3 2 1

F  
E  
D  
C  
B  
A

Y=2200.000  
Y=2200.500  
Y=2201.000  
Y=2201.500  
Y=2202.000

X=516.000  
X=516.500  
X=517.000  
X=517.500  
X=518.000

HECKSCHER DR  
ST. JOHNS RIVER  
STA. 5+00  
STA. 10+00  
STA. 15+00  
STA. 20+00

P.I. STA. 24+66.40 CUT-8  
P.I. STA. 0+00 CUT-9

RGE. 312.50  
RGE. 00  
RGE. 312.50  
RGE. 312.50  
RGE. 00  
RGE. 312.50  
RGE. 312.50

MATCHLINE SHEET NO. 016 STA. 10+00  
MATCHLINE SHEET NO. 014 STA. 5+00

CUT-9  
CUT-8

AIA  
PERIMETER RD  
ATA

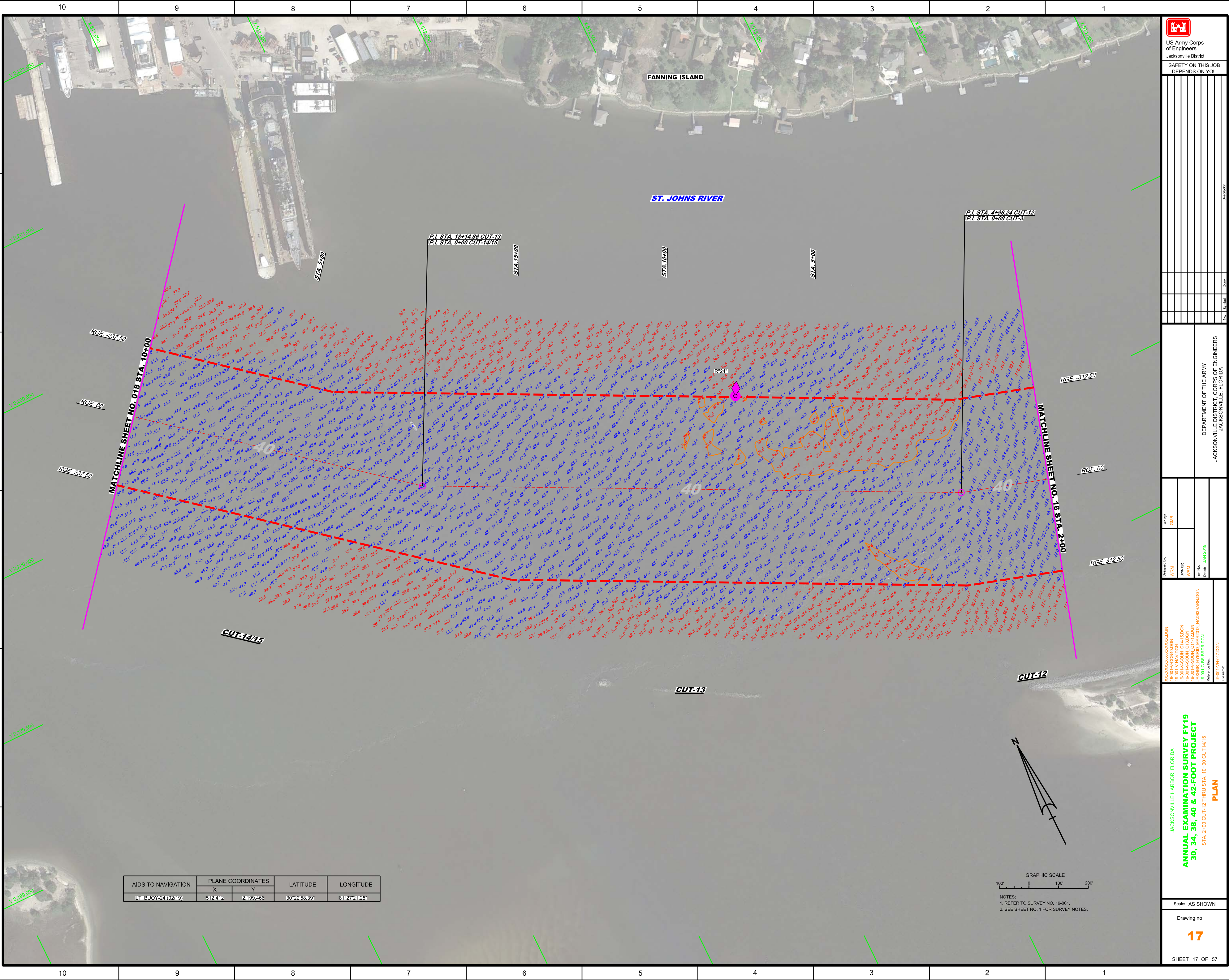
GRAPHIC SCALE  
0 100 200

NOTES:  
1. REFER TO SURVEY NO. 19-3001.  
2. SEE SHEET NO. 1 FOR SURVEY NOTES.

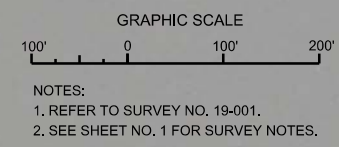








AIDS TO NAVIGATION	PLANE COORDINATES		LATITUDE	LONGITUDE
	X	Y		
LT. BUOY 24 (02/19)	512.412	2,199.466	30°22'58.39"	81°27'21.25"



US Army Corps of Engineers  
 Jacksonville District  
 SAFETY ON THIS JOB  
 DEPENDS ON YOU

DESIGNED BY: CHECKED BY: DATE:	PROJECT NO.: DRAWING NO.: DATE:
DEPARTMENT OF THE ARMY JACKSONVILLE DISTRICT, CORPS OF ENGINEERS JACKSONVILLE, FLORIDA	
<b>ANNUAL EXAMINATION SURVEY FY19</b> <b>30, 34, 38, 40 &amp; 42-FOOT PROJECT</b> STA. 2+00 CUT-12 THRU STA. 10+00 CUT 14/15 <b>PLAN</b>	
Scale: AS SHOWN Drawing no. <b>17</b> SHEET 17 OF 57	











