

CLEARWATER PASS PINELLAS COUNTY, FLORIDA HYDROGRAPHIC EXAM SURVEY FY18 8 AND 10-FOOT PROJECT

US Army Corps of Engineers
Jacksonville District

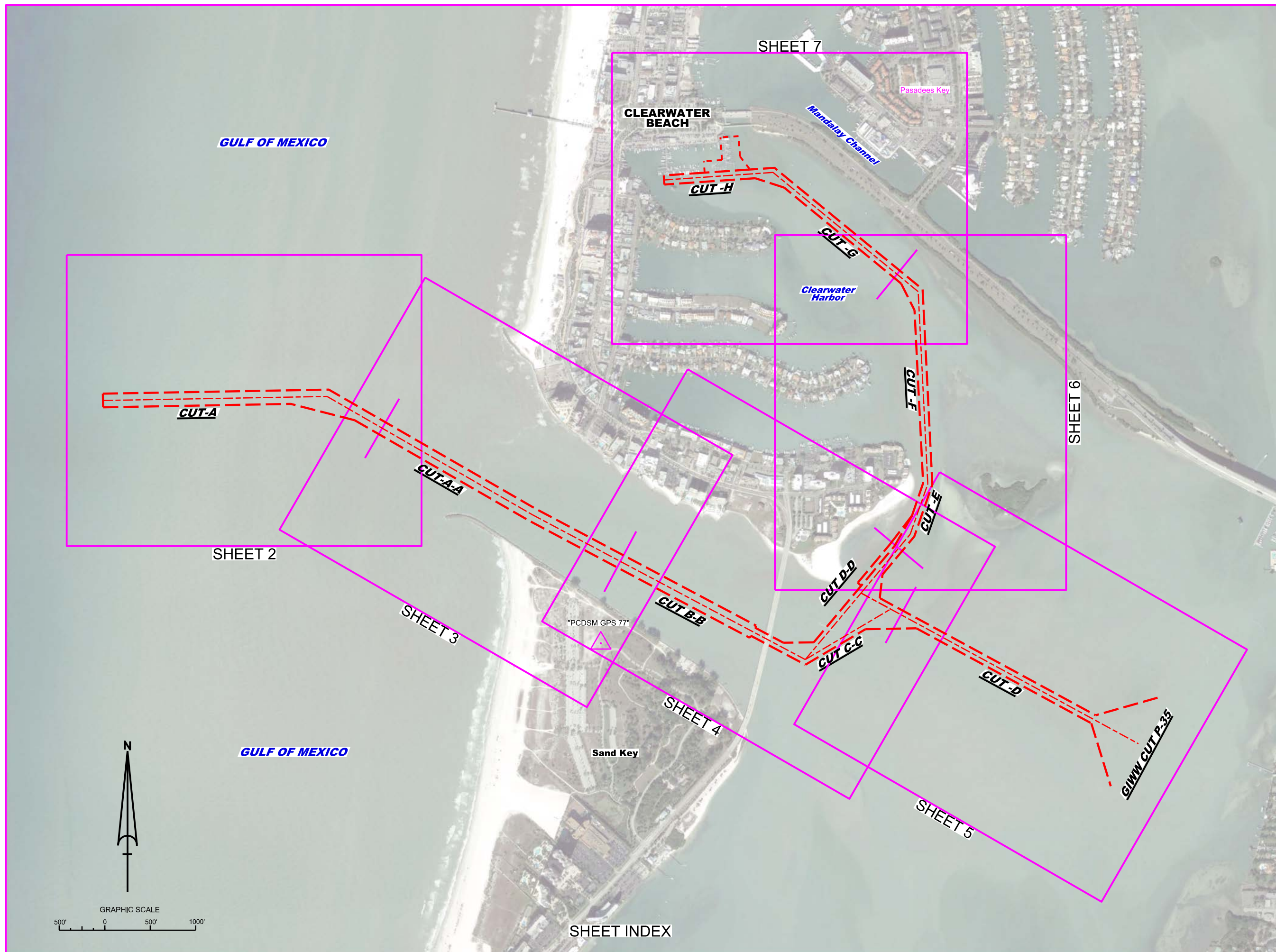
SAFETY ON THIS JOB
DEPENDS ON YOU

DEPARTMENT OF THE ARMY
JACKSONVILLE DISTRICT, CORPS OF ENGINEERS
JACKSONVILLE, FLORIDA

Checked By: GHR	Drawn By: GHR	Scale: AS SHOWN
Designed By: WRM	Drawn By: WRM	Drawing no. 1
Checked By: WRM	Drawn By: WRM	
Project No: W822P01-000-0000	Project Date: JUL 2018	
Project Title: CLEARWATER PASS SURVEY	Project Location: CLEARWATER PASS	
Reference File: 18-21-TW-SH01.DGN	File Name:	

**CLEARWATER PASS
PINELLAS COUNTY, FLORIDA
HYDROGRAPHIC EXAM SURVEY FY18
8 AND 10-FOOT PROJECT
INDEX, LOCATION AND VICINITY MAP**

SHEET 01 OF 07



SURVEY NOTES

- REFER TO SURVEY NO. 18-214.
 - DEPTHS DEPICTED BY THIS SURVEY ARE REFERENCED TO MEAN LOWER LOW WATER (MLLW) AS REPORTED BY THE NATIONAL OCEANIC AND ATMOSPHERIC ADMINISTRATION (NOAA). NOAA'S VDATUM MODEL WAS USED AND CALIBRATED TO THE PUBLISHED MLLW HEIGHTS OF THE BENCHMARKS ASSOCIATED WITH THE TIDE GAGE SITE SPECIFIED BELOW:
NOAA TIDAL STATION "AWL USE" FOR ENTIRE PROJECT (PID: AG0307)
 - TIDAL REDUCTIONS WERE OBTAINED UTILIZING A REAL-TIME KINEMATIC (RTK) GPS AND REFERENCED TO MLLW UTILIZING A HYPACK KINEMATIC TIDE DATUM (KTD) MODEL NAMED "SPC-FL-WEST-2010-12-07.KTD".
 - ALL ELEVATIONS ARE BELOW THE CHART DATUM UNLESS PRECEDED BY A (+) SIGN.
 - PLANE COORDINATES ARE BASED ON THE TRANSVERSE MERCATOR PROJECTION FOR THE WEST ZONE OF FLORIDA AND REFERENCED TO NORTH AMERICAN DATUM OF 1983, REALIZATION OF 2007 (NAD83(2007)).
 - ALL STATIONING REFERS TO THE CENTERLINE OF THE CHANNEL.
 - THIS SURVEY WAS PERFORMED USING REAL-TIME KINEMATIC (RTK) GPS POSITIONING WITH THE FOLLOWING REFERENCE BASE LOCATION:
REFERENCE BASE LOCATED AT "PCDSM GPS 77" (PID: DF5856)
TIDE STAFF LOCATED FROM TIDAL BENCHMARK "AWL USE" (NGS PID: AG0307)
 - VERTICAL MEASUREMENTS WERE MADE USING A ROSS 833C SMARTSOUNDER WITH A DUAL-FREQUENCY 28200 KHZ SINGLE-BEAM TRANSDUCER AND AN EDGETECH COMBINED MULTI-BEAM AND SIDESCAN. ALL SOUNDINGS SHOWN ARE IN HIGH FREQUENCY.
- | VESSEL | DATE OF SURVEY | CUT |
|--------|----------------|----------|
| SB-44 | 17-18 JUL 2018 | ALL CUTS |
- AIDS TO NAVIGATION WERE LOCATED DURING THIS SURVEY.
 - THE INFORMATION DEPICTED ON THIS MAP REPRESENTS THE RESULTS OF SURVEYS MADE ON THE DATES INDICATED ABOVE AND CAN ONLY BE CONSIDERED AS INDICATING THE GENERAL CONDITIONS AT THAT TIME. THIS CHART IS SOLELY FOR THE DISTRIBUTION OF AVAILABLE DEPTHS AT THE TIME OF THE SURVEY.
 - SURVEY ACCURACY PERFORMANCE STANDARDS, QUALITY CONTROL, AND QUALITY ASSURANCE REQUIREMENTS WERE FOLLOWED DURING THIS SURVEY IN ACCORDANCE WITH USACE EM 1110-2-1003, HYDROGRAPHIC SURVEYING, 30 NOV 13.

LEGEND

	MONUMENT
	LIGHTED BEACON
	GREEN DAYBEACON
	RED DAYBEACON
	RED LIGHTED BUOY
	GREEN LIGHTED BUOY
	CAN BUOY
	NUN BUOY
	TIDE STAFF
	PROJECT DEPTH



US Army Corps of Engineers
Jacksonville District
SAFETY ON THIS JOB
DEPENDS ON YOU

DEPARTMENT OF THE ARMY
JACKSONVILLE DISTRICT, CORPS OF ENGINEERS
JACKSONVILLE, FLORIDA

Checked By: GHR
Designed By: WRM
Drawn By: WRM
File No: WSP25F0006A00X
Date: JUL 2018

XXXXXXXXXX.DGN
XXXXXXXXXXXX.DGN
18214AAVAY.DGN
CLEARWATERCANDICE.DGN
18214CS-BB-RRRD.DGN
Reference files:
18214P-HSH02.DGN
File name:

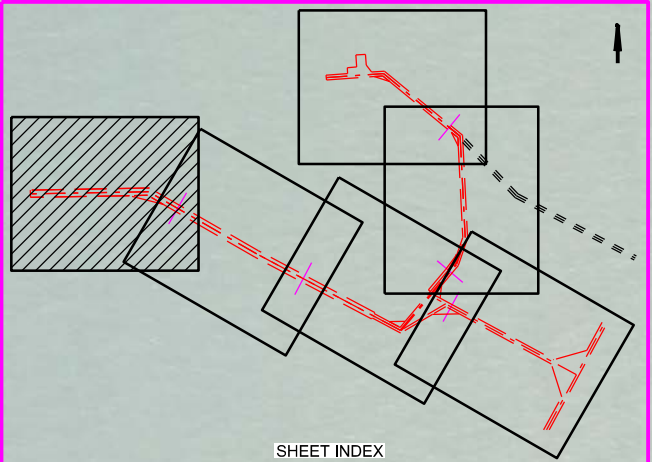
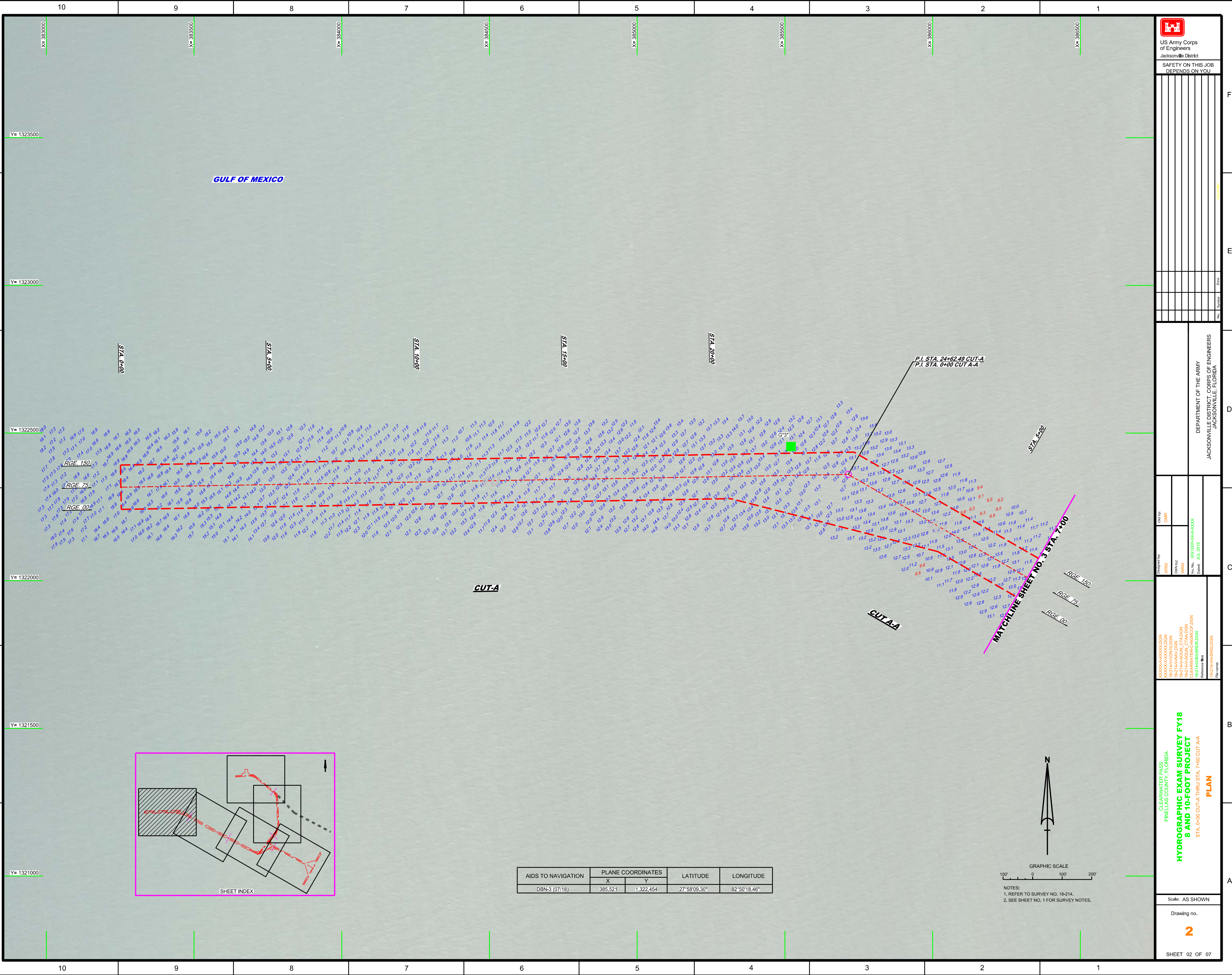
CLEARWATER PASS
PINELAS COUNTY, FLORIDA
**HYDROGRAPHIC EXAM SURVEY FY18
8 AND 10-FOOT PROJECT**
STA. 0+00 CUT-A THRU STA. 7+00 CUT-A-A
PLAN

Scale: AS SHOWN

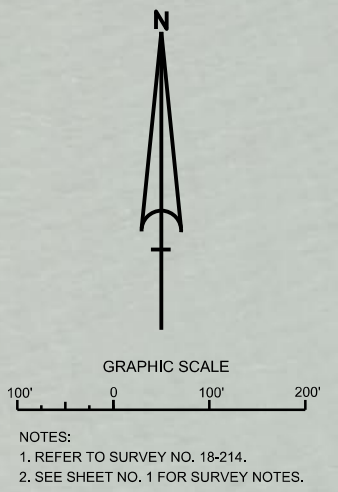
Drawing no.

2

SHEET 02 OF 07



AIDS TO NAVIGATION	PLANE COORDINATES		LATITUDE	LONGITUDE
	X	Y		
DBN-3 (07/18)	385,521	1,322,454	27°58'09.30"	82°50'18.46"



NOTES:
1. REFER TO SURVEY NO. 18-214.
2. SEE SHEET NO. 1 FOR SURVEY NOTES.



US Army Corps of Engineers
Jacksonville District

SAFETY ON THIS JOB
DEPENDS ON YOU

DEPARTMENT OF THE ARMY
JACKSONVILLE DISTRICT, CORPS OF ENGINEERS
JACKSONVILLE, FLORIDA

Drawn by: **WRM**
 Checked by: **GHR**
 Date: **JUL 2018**

18214-AAS-01A-DGN
 18214-AAS-01A-DGN
 18214-AAS-01A-DGN
 18214-AAS-01A-DGN
 18214-AAS-01A-DGN
 18214-AAS-01A-DGN
 18214-AAS-01A-DGN
 18214-AAS-01A-DGN
 18214-AAS-01A-DGN
 18214-AAS-01A-DGN

PLAN

CLEARWATER PASS
PINELLAS COUNTY, FLORIDA

HYDROGRAPHIC EXAM SURVEY FY18

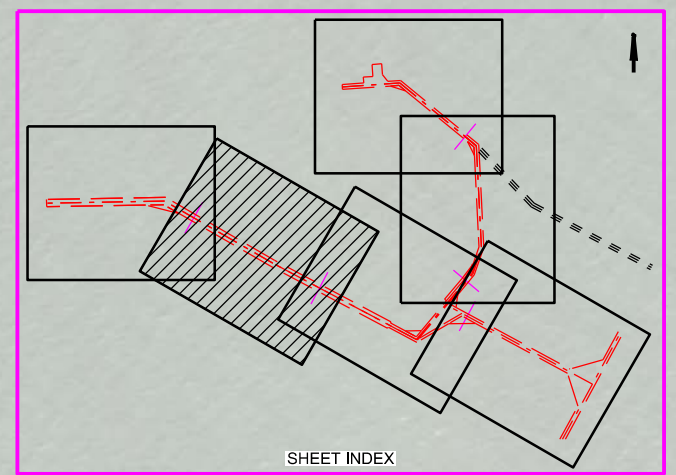
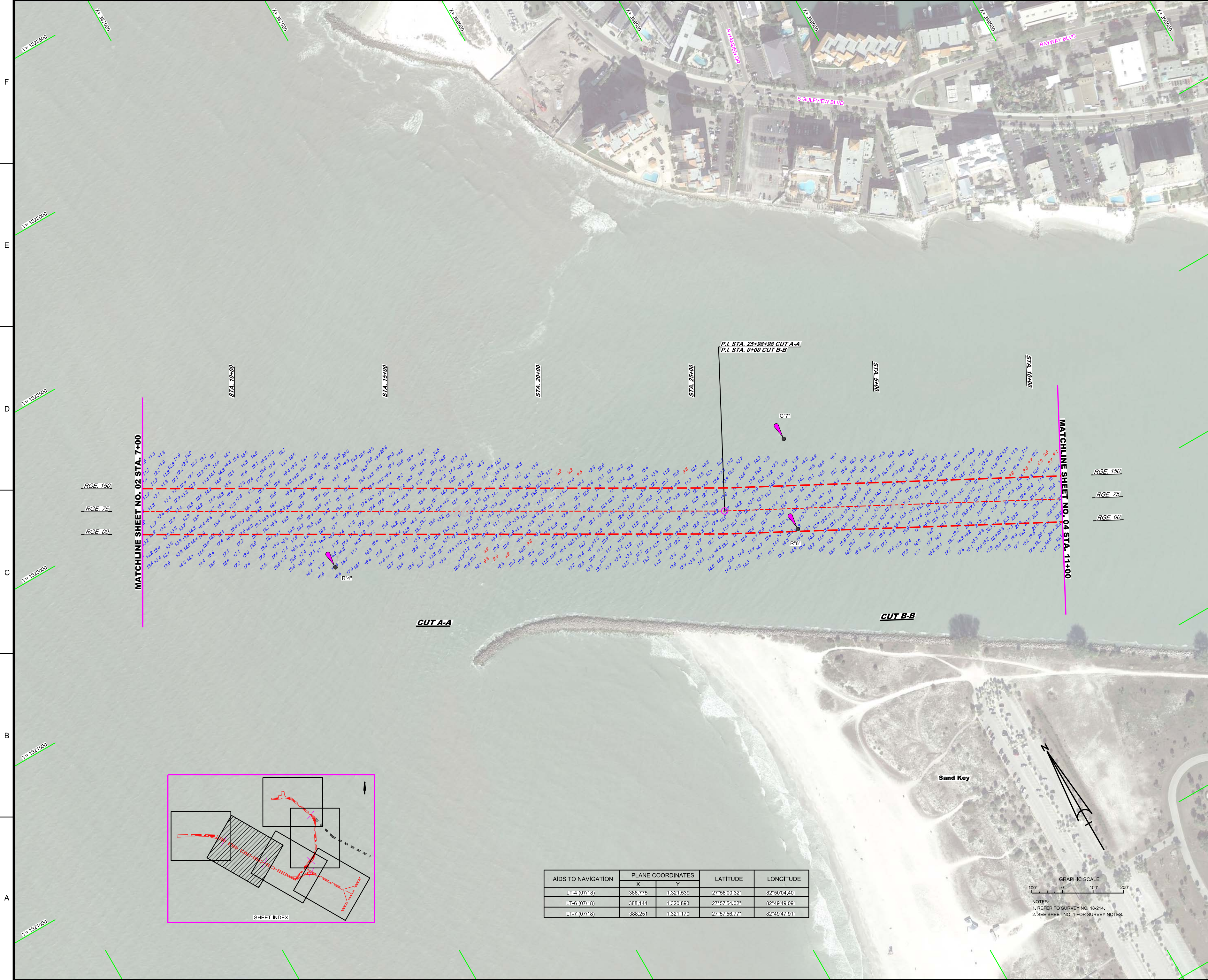
8 AND 10-FOOT PROJECT

STA. 7+00 CUT A-A THRU STA. 11+00 CUT B-B

Scale: AS SHOWN

Drawing no.
3

SHEET 03 OF 07

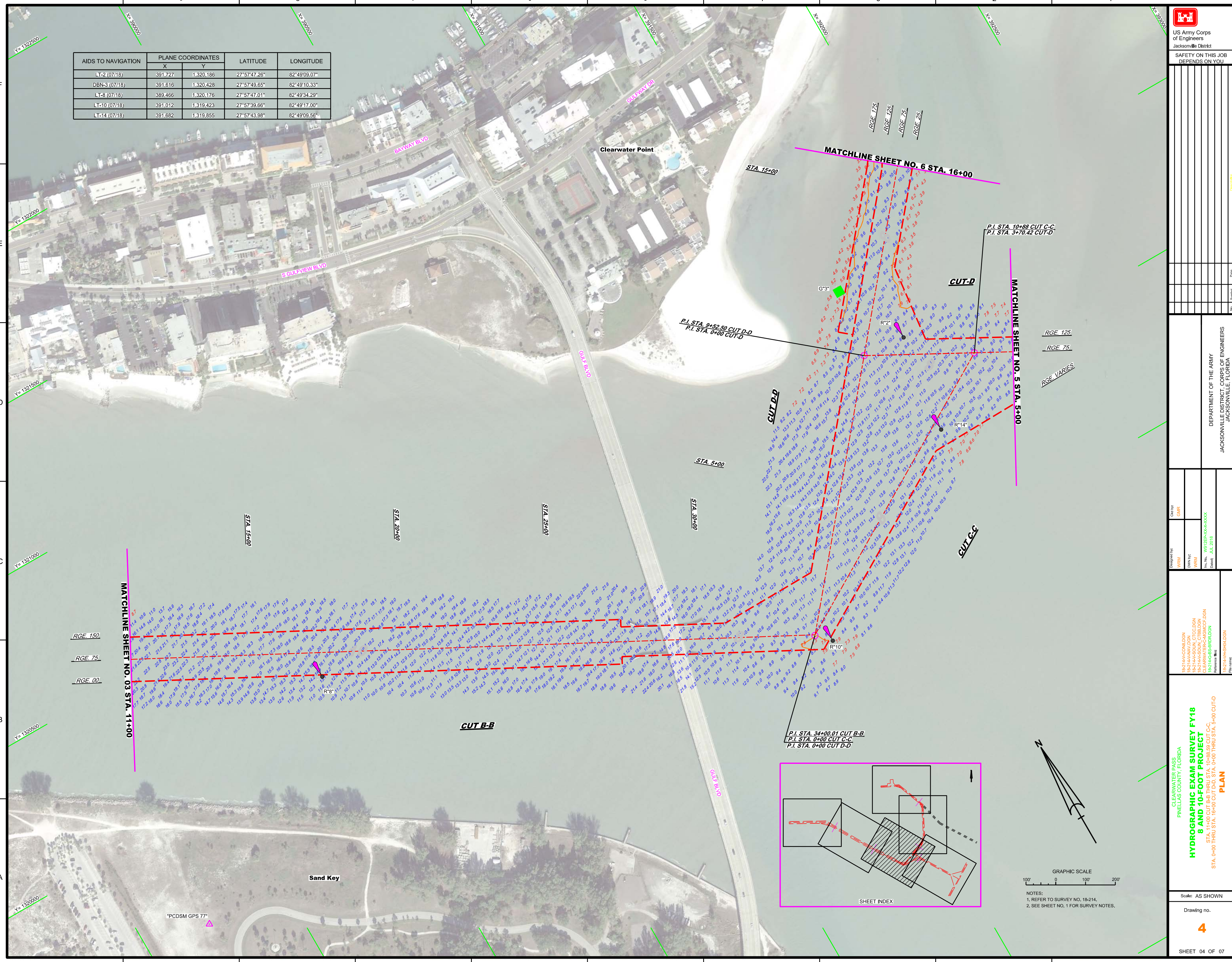


P.I. STA. 25+98+98 CUT A-A
P.I. STA. 0+00 CUT B-B

AIDS TO NAVIGATION	PLANE COORDINATES		LATITUDE	LONGITUDE
	X	Y		
LT-4 (07/18)	386,775	1,321,539	27°58'00.32"	82°50'04.40"
LT-6 (07/18)	388,144	1,320,893	27°57'54.02"	82°49'49.09"
LT-7 (07/18)	388,251	1,321,170	27°57'56.77"	82°49'47.91"

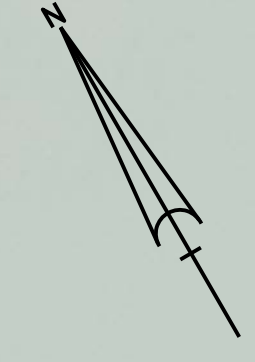
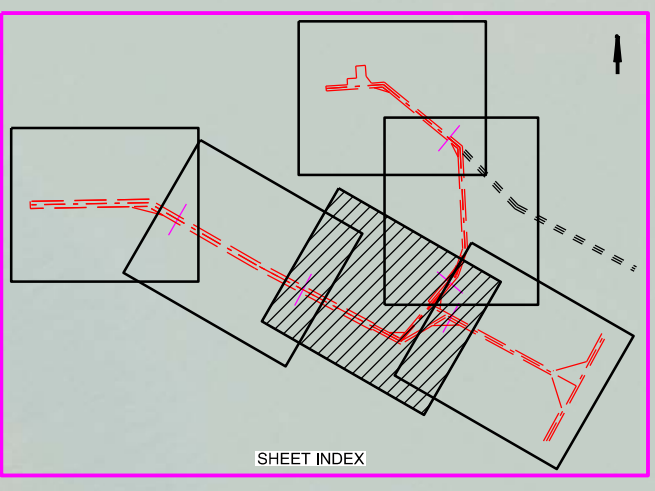


AIDS TO NAVIGATION	PLANE COORDINATES		LATITUDE	LONGITUDE
	X	Y		
LT-2 (07/18)	391.727	1,320.186	27°57'47.26"	82°49'09.07"
DBN-3 (07/18)	391.616	1,320.428	27°57'49.65"	82°49'10.33"
LT-8 (07/18)	389.466	1,320.176	27°57'47.01"	82°49'34.29"
LT-10 (07/18)	391.012	1,319.423	27°57'39.66"	82°49'17.00"
LT-14 (07/18)	391.682	1,319.855	27°57'43.98"	82°49'09.56"



RGE 150
RGE 75
RGE 00

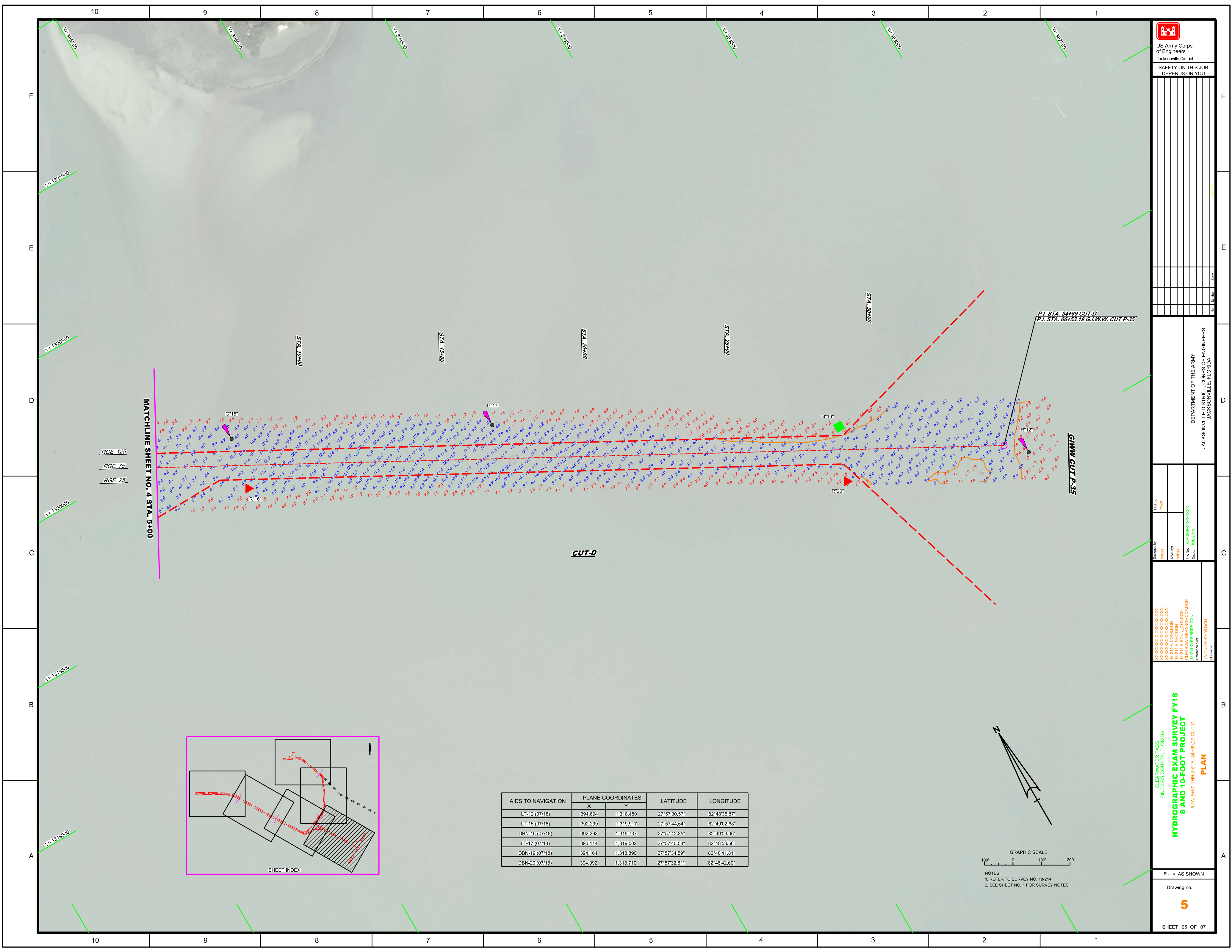
MATCHLINE SHEET NO. 03 STA. 11+00



GRAPHIC SCALE
100' 0 100' 200'

NOTES:
1. REFER TO SURVEY NO. 18-214.
2. SEE SHEET NO. 1 FOR SURVEY NOTES.

*PCDSM GPS 77

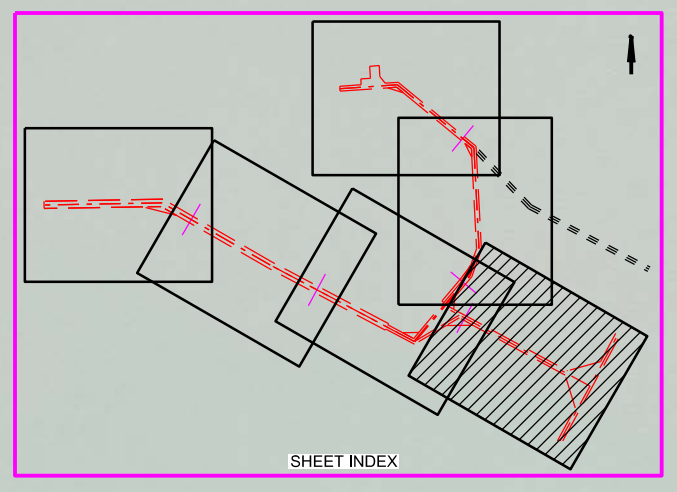


RGE 125
 RGE 75
 RGE 25

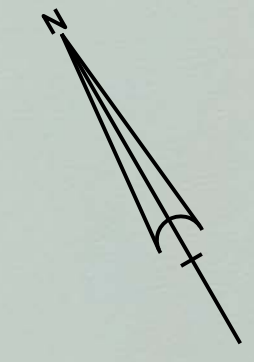
MATCHLINE SHEET NO. 4 STA. 5+00

CUT-D


G.I.W.W. CUT P-35



AIDS TO NAVIGATION	PLANE COORDINATES		LATITUDE	LONGITUDE
	X	Y		
LT-12 (07/18)	394,694	1,318,480	27°57'30.57"	82°48'35.87"
LT-15 (07/18)	392,299	1,319,917	27°57'44.64"	82°49'02.68"
DBN-16 (07/18)	392,263	1,319,737	27°57'42.85"	82°49'03.06"
LT-17 (07/18)	393,114	1,319,502	27°57'40.58"	82°48'53.56"
DBN-19 (07/18)	394,164	1,318,890	27°57'34.59"	82°48'41.81"
DBN-20 (07/18)	394,092	1,318,710	27°57'32.81"	82°48'42.80"



NOTES:
 1. REFER TO SURVEY NO. 18-214.
 2. SEE SHEET NO. 1 FOR SURVEY NOTES.



US Army Corps of Engineers
 Jacksonville District

SAFETY ON THIS JOB
 DEPENDS ON YOU

DEPARTMENT OF THE ARMY
 JACKSONVILLE DISTRICT, CORPS OF ENGINEERS
 JACKSONVILLE, FLORIDA

HYDROGRAPHIC EXAM SURVEY FY18
8 AND 10-FOOT PROJECT
 STA. 5+00 THRU STA. 34+69.29 CUT-D
PLAN

Scale: AS SHOWN
 Drawing no.
5

SHEET 05 OF 07

US Army Corps of Engineers
Jacksonville District

SAFETY ON THIS JOB
DEPENDS ON YOU

No.	Symbol	Zone

DEPARTMENT OF THE ARMY
JACKSONVILLE DISTRICT, CORPS OF ENGINEERS
JACKSONVILLE, FLORIDA

Checked By: GHR
Designed By: WRM
Drawn By: WRM
Plot Date: WSP2018-06-06
Scale: JULY 2018
Reference File: 18-21-HA-SURV-DGN, 18-21-HA-SURV-CTF-DGN, 18-21-HA-SURV-CTE-DGN, 18-21-HA-SURV-CON-DGN, 18-21-HA-SURV-CON-DGN
File Name: 18-21-HA-SURV-DGN

CLEARWATER PASS
PINELLAS COUNTY, FLORIDA

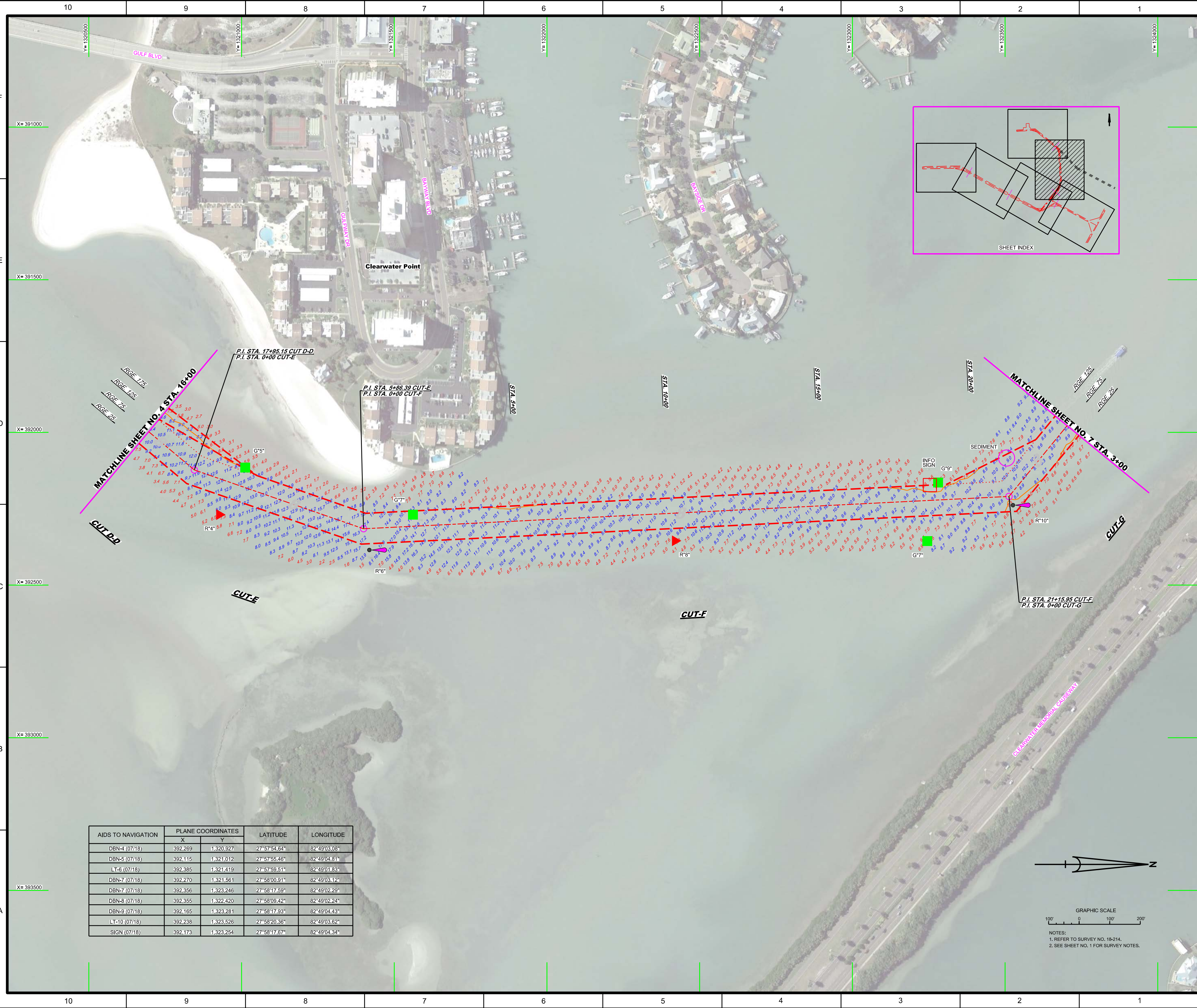
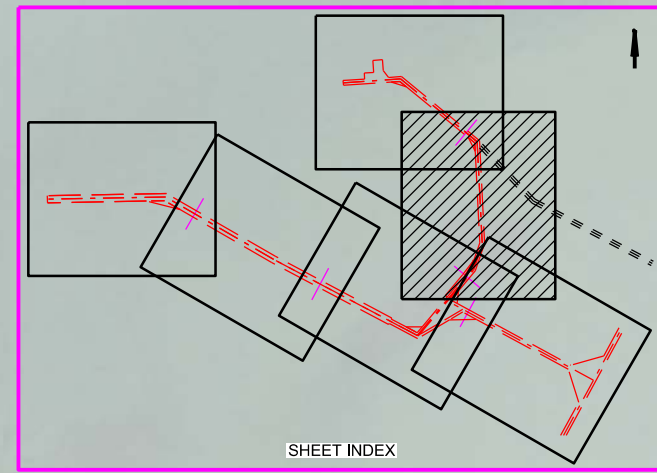
**HYDROGRAPHIC EXAM SURVEY FY18
8 AND 10-FOOT PROJECT**
STA. 16+00 CUT DO THRU STA. 3+00 CUT-G

PLAN

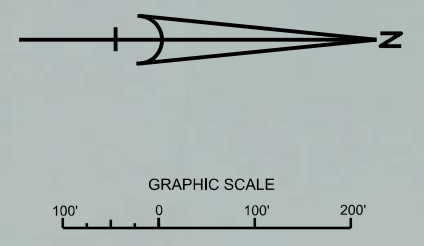
Scale: AS SHOWN

Drawing no.
6

SHEET 06 OF 07



AIDS TO NAVIGATION	PLANE COORDINATES		LATITUDE	LONGITUDE
	X	Y		
DBN-4 (07/18)	392,269	1,320,927	27°57'54.64"	82°49'03.08"
DBN-5 (07/18)	392,115	1,321,012	27°57'55.46"	82°49'04.81"
LT-6 (07/18)	392,385	1,321,419	27°57'59.51"	82°49'01.83"
DBN-7 (07/18)	392,270	1,321,561	27°58'00.91"	82°49'03.12"
DBN-7 (07/18)	392,356	1,323,246	27°58'17.59"	82°49'02.29"
DBN-8 (07/18)	392,355	1,322,420	27°58'09.42"	82°49'02.24"
DBN-9 (07/18)	392,165	1,323,281	27°58'17.93"	82°49'04.45"
LT-10 (07/18)	392,238	1,323,526	27°58'20.36"	82°49'03.62"
SIGN (07/18)	392,173	1,323,254	27°58'17.67"	82°49'04.34"

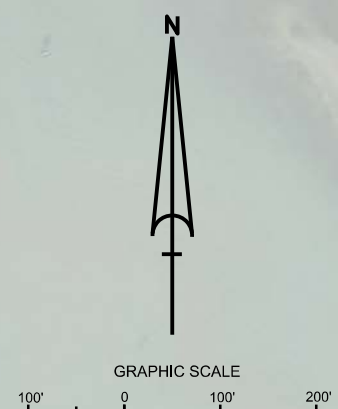



NOTES:
1. REFER TO SURVEY NO. 18-214.
2. SEE SHEET NO. 1 FOR SURVEY NOTES.

AIDS TO NAVIGATION	PLANE COORDINATES		LATITUDE	LONGITUDE
	X	Y		
DBN-11 (07/18)	390.850	1,324.555	27°58'30.46"	82°49'19.18"
SIGN (07/18)	391.054	1,324.538	27°58'30.30"	82°49'16.91"

P.I. STA. 20+63.29 CUT-G
P.I. STA. 0+00 CUT-H

SHEET INDEX





US Army Corps of Engineers
Jacksonville District

SAFETY ON THIS JOB
DEPENDS ON YOU

DEPARTMENT OF THE ARMY
JACKSONVILLE DISTRICT, CORPS OF ENGINEERS
JACKSONVILLE, FLORIDA

Call by: GHR
Designed by: WRM
Drawn by: WRM
File No.: W8225P-000-00000
Date: JULY 2018

XXXXXXXXXXXXXXXXXXXX.DGN
18-214-HA-SDIA_CUT-H.DGN
18-214-HA-NAV.DGN
CLEARWATER-CANAL-CUT-H.DGN
18-214-C-BS-BRID.DGN
Reference: 18-214-PS-007.DGN

CLEARWATER PASS
PINELAS COUNTY, FLORIDA

**HYDROGRAPHIC EXAM SURVEY FY18
8 AND 10-FOOT PROJECT**

STA. 3+00 CUT-G THRU STA. 12+00 CUT-H

PLAN

Scale: AS SHOWN

Drawing no.

7

SHEET 07 OF 07