

# ANCLOTE RIVER PASCO COUNTY, FLORIDA HYDROGRAPHIC & BEACH EXAM SURVEY FY18 9-FOOT PROJECT

### SURVEY NOTES

- REFER TO SURVEY NO. 18-151.
  - DEPTHS DEPICTED BY THIS SURVEY ARE REFERENCED TO MLLW, TIDAL EPOCH 1983-2001 AS REPORTED BY THE NATIONAL OCEANIC AND ATMOSPHERIC ADMINISTRATION (NOAA). NOAA'S VDATUM MODEL WAS USED AND CALIBRATED TO THE PUBLISHED MLLW HEIGHTS OF THE BENCHMARKS ASSOCIATED WITH THE TIDE GAGE SITES SPECIFIED BELOW.  
NOAA TIDAL STATION "LEISNER" (PID: AL6628)
  - TIDAL REDUCTIONS WERE OBTAINED UTILIZING A REAL-TIME KINEMATIC (RTK) GPS AND REFERENCED TO MLLW UTILIZING A HYPACK KINEMATIC TIDE DATUM (KTD) MODEL. FILE NAME IS: "SPC-FL-WEST-2010-12-07.KTD".
  - ALL ELEVATIONS ARE BELOW THE CHART DATUM UNLESS PRECEDED BY A (+) SIGN.
  - PLANE COORDINATES ARE BASED ON THE TRANSVERSE MERCATOR PROJECTION FOR THE WEST ZONE OF FLORIDA AND REFERENCED TO NORTH AMERICAN DATUM OF 1983 (NAD83).
  - ALL STATIONING REFERS TO THE CENTERLINE OF THE CHANNEL.
  - THIS SURVEY WAS PERFORMED USING REAL-TIME KINEMATIC (RTK) GPS POSITIONING WITH THE FOLLOWING REFERENCE BASE LOCATIONS:  
REFERENCE BASE LOCATED AT "PCDSM GPS 80" (PID: DF5855)
  - VERTICAL MEASUREMENTS WERE MADE USING A ROSS MODEL 835C DUAL-FREQUENCY SMARTSOUNDER WITH A 28/200 KHZ SINGLE-BEAM TRANSDUCER AND AN EDGETECH MODEL 6205 COMBINED MULTI-BEAM AND SIDESCAN. ALL SOUNDINGS SHOWN ARE IN HIGH FREQUENCY.
- | VESSEL | DATE OF SURVEY | CUT                            |
|--------|----------------|--------------------------------|
| SB-48  | 07 AUG 2018    | CUTS 4, 5 & 6                  |
| SB-48  | 08 AUG 2018    | CUTS 1, 1A, 2, 3 & P-41        |
| SB-48  | 09 AUG 2018    | CUTS 7 THRU 14 & TURNING BASIN |
| SB-44  | 12 SEP 2018    | TRIANGLE-AREA                  |
- AIDS TO NAVIGATION WERE LOCATED DURING THIS SURVEY.
  - THE INFORMATION DEPICTED ON THIS MAP REPRESENTS THE RESULTS OF SURVEYS MADE ON THE DATES INDICATED ABOVE AND CAN ONLY BE CONSIDERED AS INDICATING THE GENERAL CONDITIONS AT THAT TIME. THIS CHART IS SOLELY FOR THE DISTRIBUTION OF AVAILABLE DEPTHS AT THE TIME OF THE SURVEY.
  - SURVEY ACCURACY PERFORMANCE STANDARDS, QUALITY CONTROL, AND QUALITY ASSURANCE REQUIREMENTS WERE FOLLOWED DURING THIS SURVEY IN ACCORDANCE WITH USACE EM 1110-2-1003, HYDROGRAPHIC SURVEYING, 30 NOV 13.

LEGEND	
	MONUMENT
	LIGHTED BEACON
	GREEN DAYBEACON
	RED DAYBEACON
	RED LIGHTED BUOY
	GREEN LIGHTED BUOY
	CAN BUOY
	NUN BUOY
	TIDE STAFF
	PROJECT DEPTH

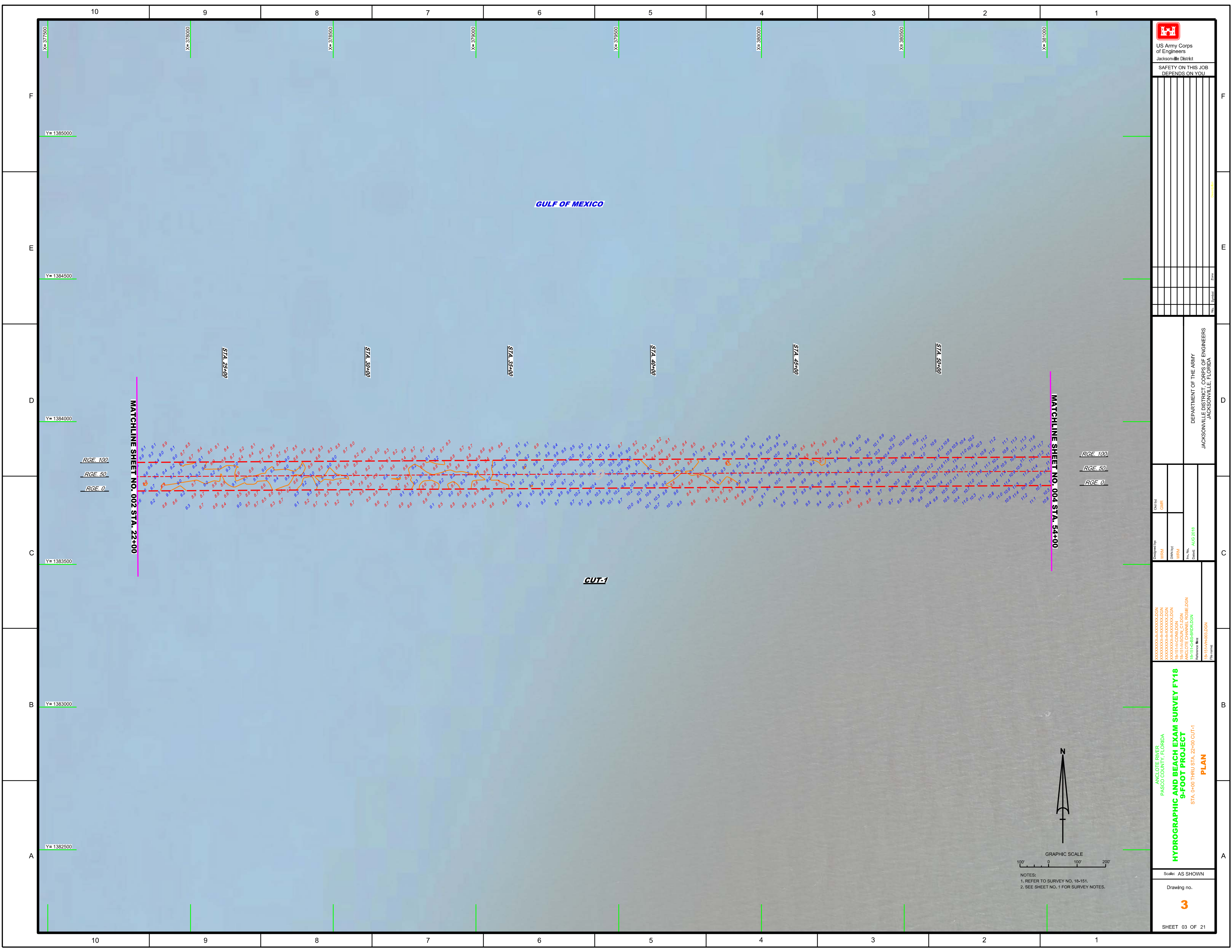
US Army Corps of Engineers  
Jacksonville District  
SAFETY ON THIS JOB  
DEPENDS ON YOU


DEPARTMENT OF THE ARMY  
JACKSONVILLE DISTRICT, CORPS OF ENGINEERS  
JACKSONVILLE, FLORIDA

ANCLOTE RIVER  
PASCO COUNTY, FLORIDA  
HYDROGRAPHIC AND BEACH EXAM SURVEY FY18  
9-FOOT PROJECT  
INDEX, LOCATION AND VICINITY  
MAP

Scale: AS SHOWN  
Drawing no. 1  
SHEET 01 OF 21





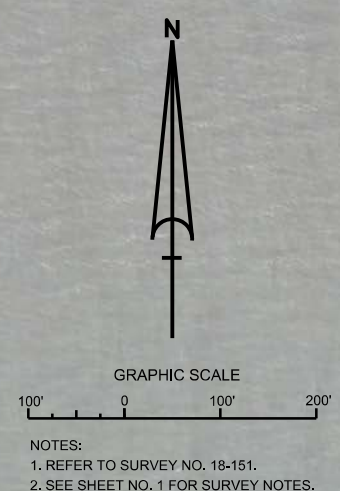

  
 US Army Corps of Engineers  
 Jacksonville District  
 SAFETY ON THIS JOB  
 DEPENDS ON YOU

DEPARTMENT OF THE ARMY  
 JACKSONVILLE DISTRICT, CORPS OF ENGINEERS  
 JACKSONVILLE, FLORIDA

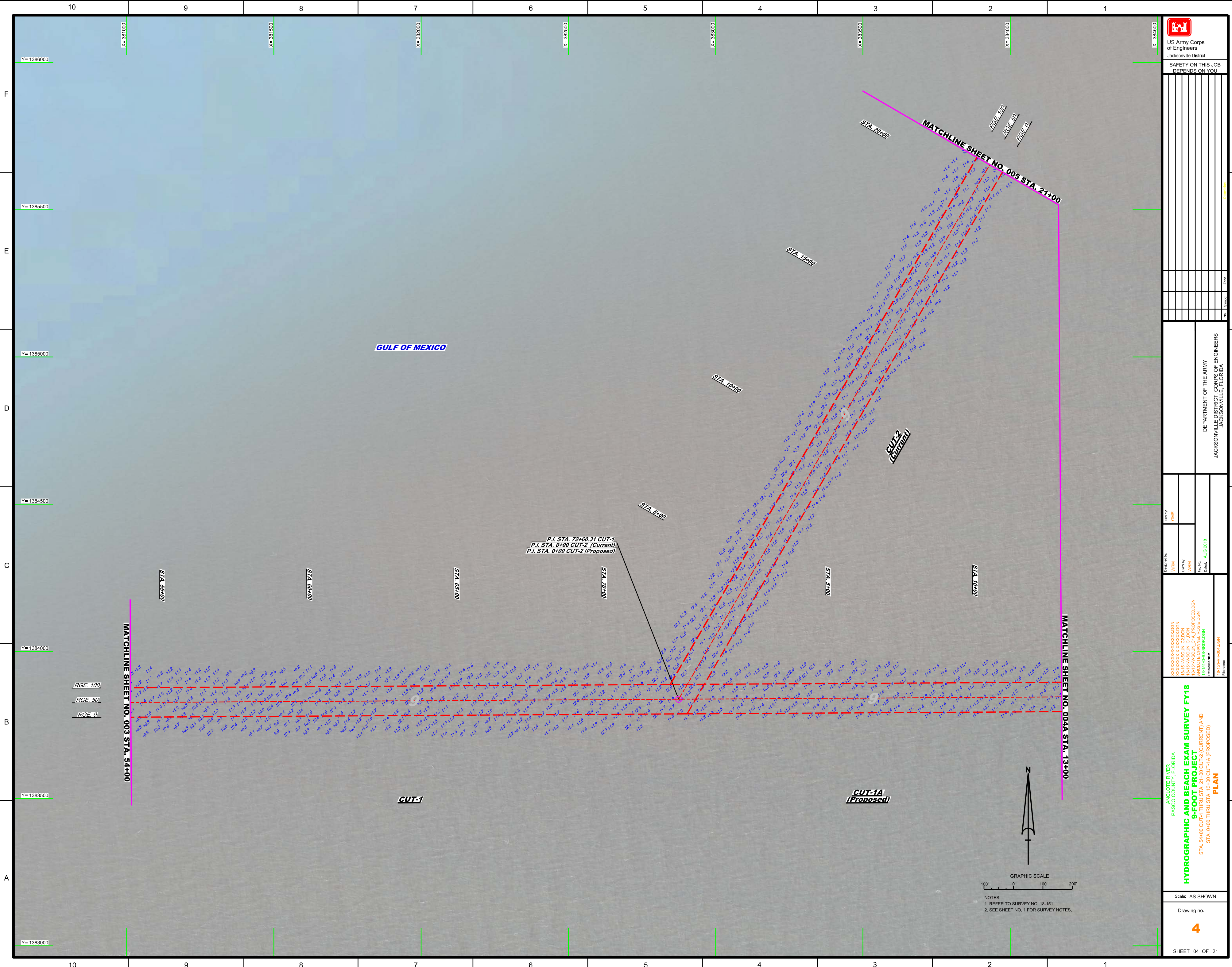
Designed by: WRM  
 Drawn by: WRM  
 Check by: GHR  
 Date: AUG 2018

ANGLCOTE RIVER  
 PASCO COUNTY, FLORIDA  
**HYDROGRAPHIC AND BEACH EXAM SURVEY FY18**  
**9-FOOT PROJECT**  
 STA. 0+00 THRU STA. 22+00 CUT-1  
**PLAN**

Scale: AS SHOWN  
 Drawing no.  
**3**  
 SHEET 03 OF 21



NOTES:  
 1. REFER TO SURVEY NO. 18-151.  
 2. SEE SHEET NO. 1 FOR SURVEY NOTES.

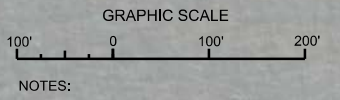


No.	Symbol	Zone

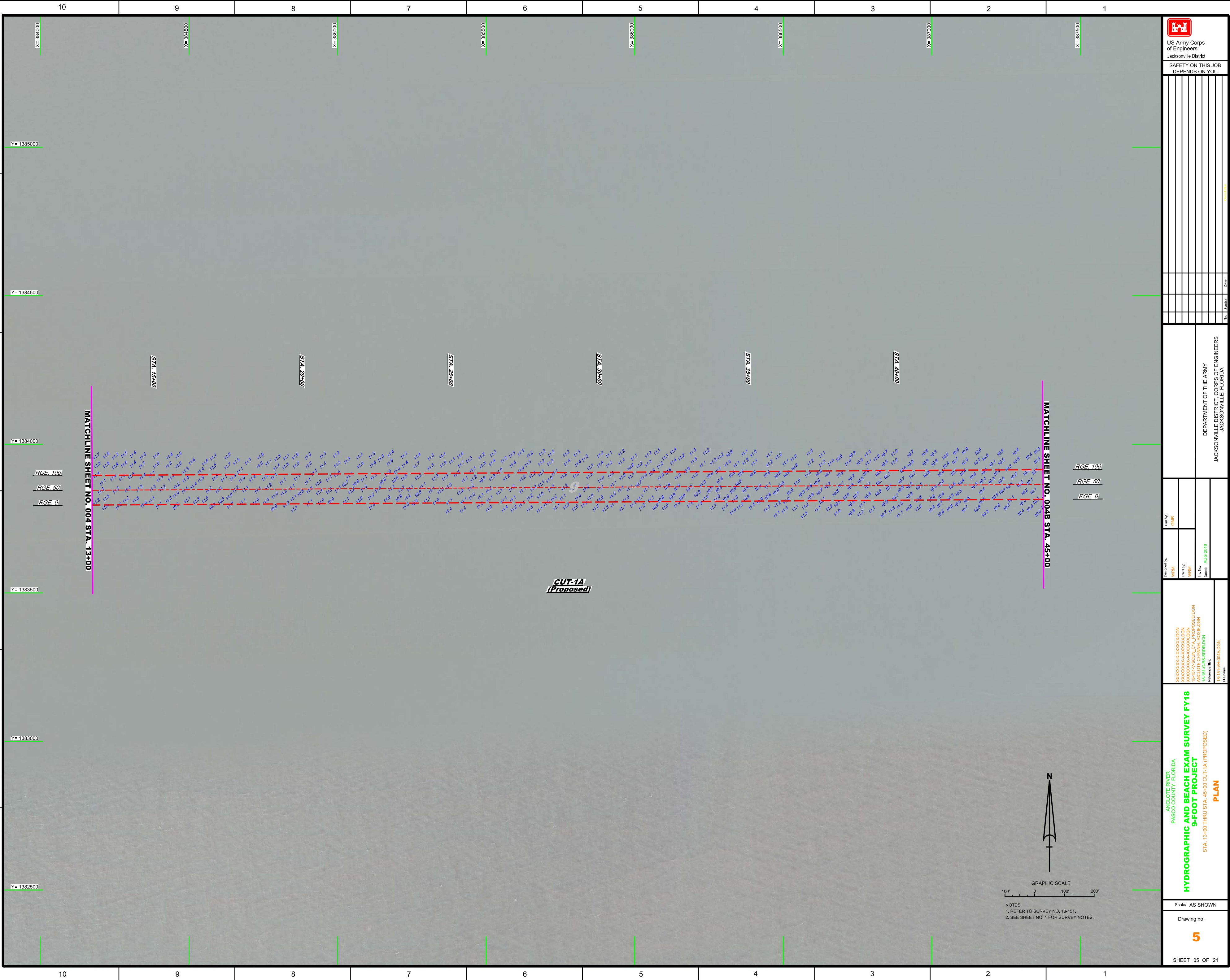
DEPARTMENT OF THE ARMY  
JACKSONVILLE DISTRICT, CORPS OF ENGINEERS  
JACKSONVILLE, FLORIDA

Check by: GHR Designed by: WRM Drawn by: WRM Date: AUG 2018 Project: 18-15-PA-R04LDON	18-15-PA-R04LDON 18-15-PA-S04LDON 18-15-PA-S04LDON 18-15-PA-S04LDON 18-15-PA-R04LDON 18-15-PA-R04LDON
---	--

**HYDROGRAPHIC AND BEACH EXAM SURVEY FY18**  
9-FOOT PROJECT  
STA. 54+00 CUT-1 THRU STA. 21+00 CUT-2 (CURRENT) AND  
STA. 0+00 THRU STA. 13+00 CUT-1A (PROPOSED)  
**PLAN**



- NOTES:  
1. REFER TO SURVEY NO. 18-151.  
2. SEE SHEET NO. 1 FOR SURVEY NOTES.



F  
E  
D  
C  
B  
A

10 9 8 7 6 5 4 3 2 1

**US Army Corps of Engineers**  
Jacksonville District

SAFETY ON THIS JOB  
DEPENDS ON YOU

US Army Corps of Engineers  
Department of the Army  
Jacksonville District, Corps of Engineers  
Jacksonville, Florida

Checked By: GHR  
Designed By: WRM  
Drawn By: WRM  
File No.: 18-151-HDR001A.DGN  
Date: AUG 2018

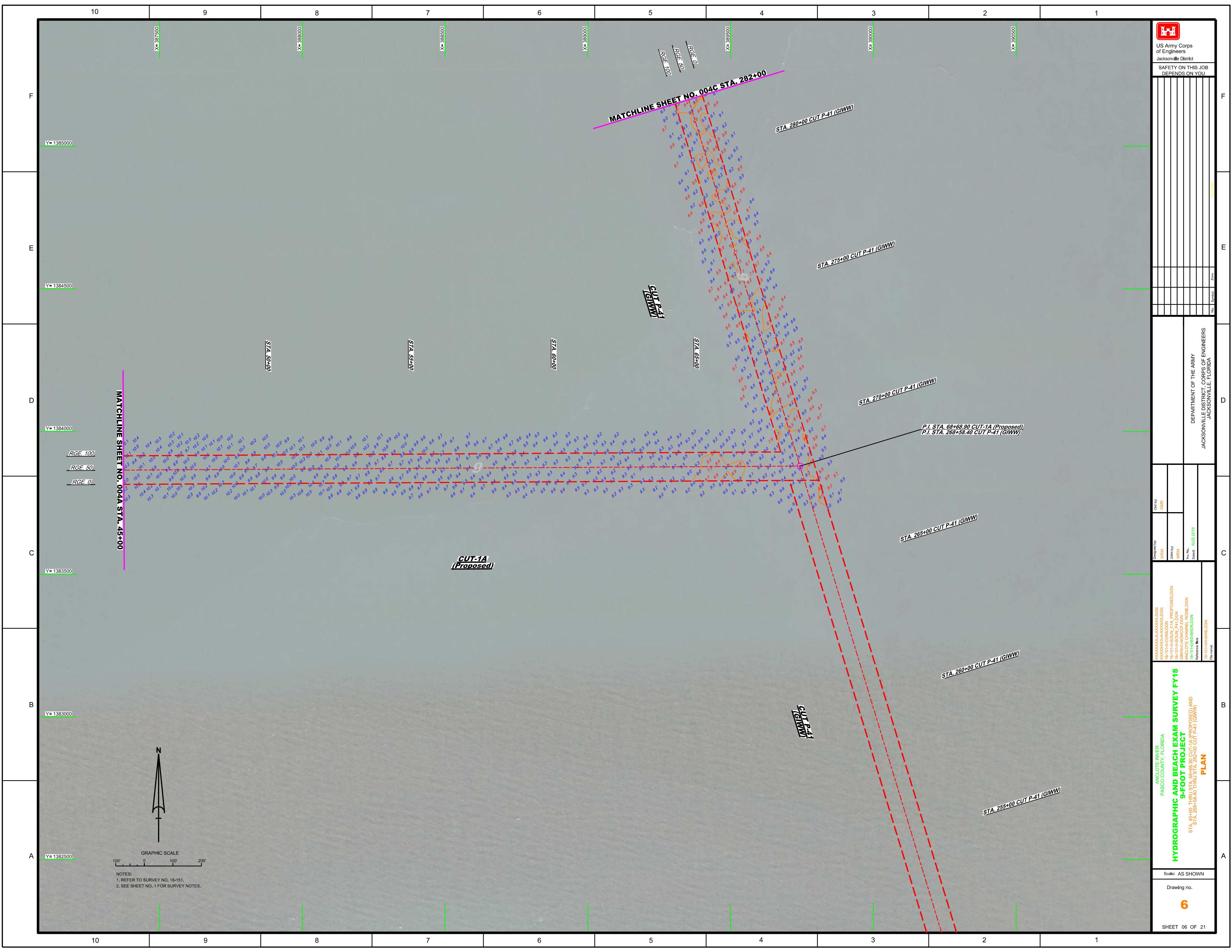
**HYDROGRAPHIC AND BEACH EXAM SURVEY FY18**  
9-FOOT PROJECT  
STA. 13+00 THRU STA. 45+00 CUT-1A (PROPOSED)

ANGLOTE RIVER  
PASCO COUNTY, FLORIDA

Scale: AS SHOWN

Drawing no. **5**

SHEET 05 OF 21

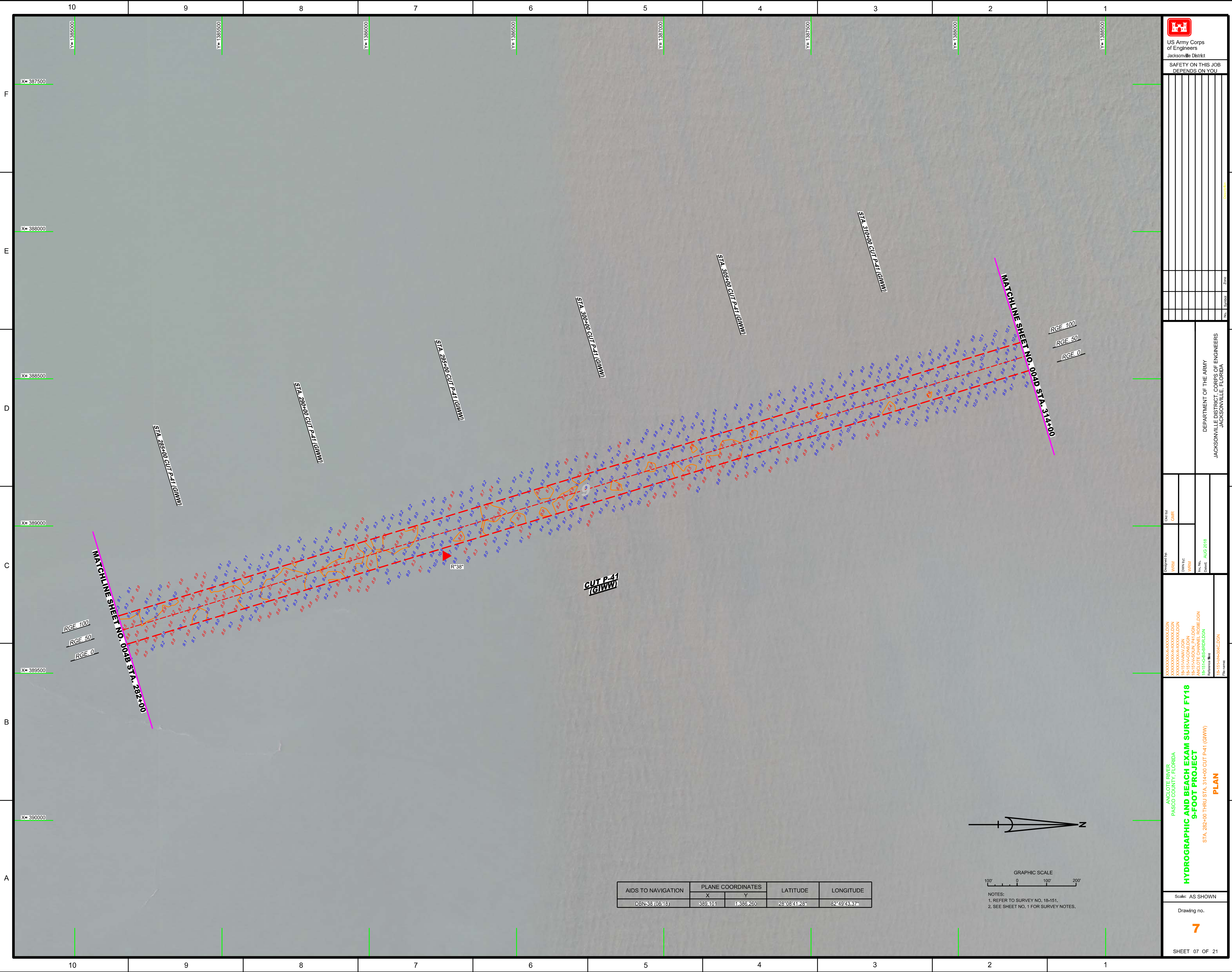



**MATCHLINE SHEET NO. 004A STA. 45+00**

**MATCHLINE SHEET NO. 004C STA. 282+00**

**NOTES:**  
 1. REFER TO SURVEY NO. 18-151.  
 2. SEE SHEET NO. 1 FOR SURVEY NOTES.

 US Army Corps of Engineers Jacksonville District SAFETY ON THIS JOB DEPENDS ON YOU	
Designated by: WRM Drawn by: WRM In. No.: 1515-0010-0008.DGN Date: AUG 2018	Check by: GMR
DEPARTMENT OF THE ARMY JACKSONVILLE DISTRICT, CORPS OF ENGINEERS JACKSONVILLE, FLORIDA	
<b>ANGLOTE RIVER</b> <b>PASCO COUNTY, FLORIDA</b> <b>HYDROGRAPHIC AND BEACH EXAM SURVEY FY18</b> <b>9-FOOT PROJECT</b> STA. 45+00 THRU STA. 69+90 CUT-1A (PROPOSED) AND STA. 255+00 THRU STA. 280+00 CUT P-41 (GIWW)	
<b>PLAN</b>	
Scale: AS SHOWN Drawing no. <b>6</b> SHEET 06 OF 21	




  
 US Army Corps of Engineers  
 Jacksonville District  
 SAFETY ON THIS JOB  
 DEPENDS ON YOU

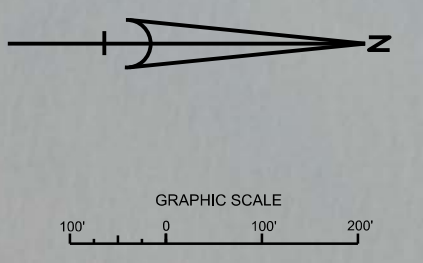
DEPARTMENT OF THE ARMY  
 JACKSONVILLE DISTRICT, CORPS OF ENGINEERS  
 JACKSONVILLE, FLORIDA

Checked by: GHR  
 Designed by: WRM  
 Drawn by: WRM  
 File No.: 18-151-14-000-000  
 Date: AUG 2018

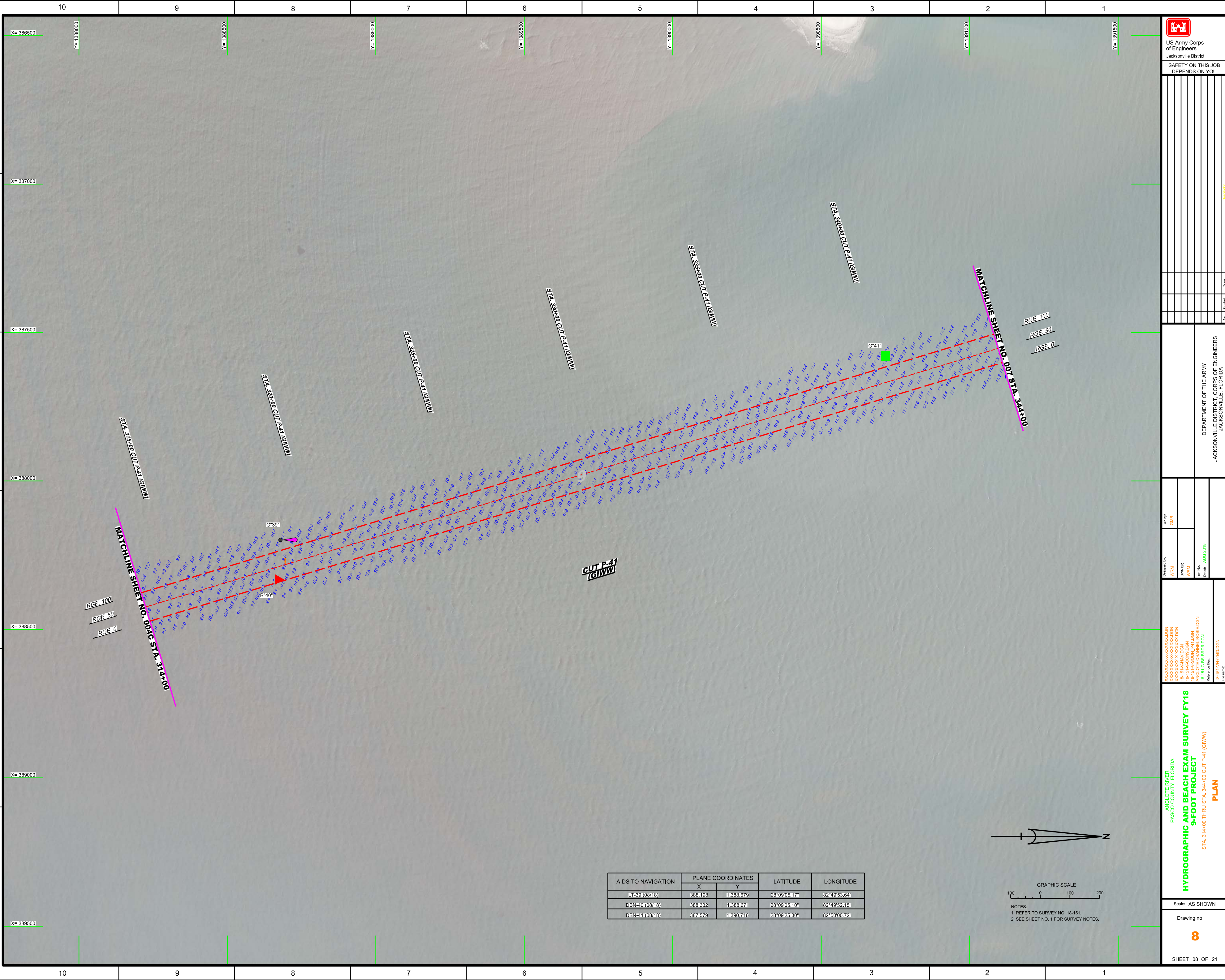
ANGLCOTE RIVER  
 PASCO COUNTY, FLORIDA  
**HYDROGRAPHIC AND BEACH EXAM SURVEY FY18**  
**9-FOOT PROJECT**  
 STA. 282+00 THRU STA. 314+00 CUT P-41 (GIWW)  
**PLAN**

Scale: AS SHOWN  
 Drawing no.  
**7**  
 SHEET 07 OF 21

AIDS TO NAVIGATION	PLANE COORDINATES		LATITUDE	LONGITUDE
	X	Y		
DBN-38 (08718)	389.101	1,386,260	28°08'41.28"	82°49'43.37"



NOTES:  
 1. REFER TO SURVEY NO. 18-151.  
 2. SEE SHEET NO. 1 FOR SURVEY NOTES.



US Army Corps of Engineers  
 Jacksonville District  
 SAFETY ON THIS JOB  
 DEPENDS ON YOU

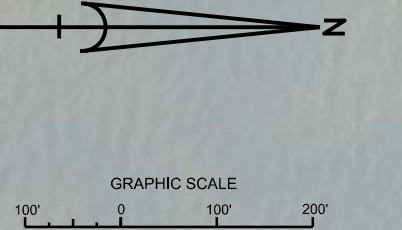
DEPARTMENT OF THE ARMY  
 JACKSONVILLE DISTRICT, CORPS OF ENGINEERS  
 JACKSONVILLE, FLORIDA

Check by: GHR  
 Designed by: WRM  
 Drawn by: WRM  
 Date: AUG 2018

XXXXXXXXXXXXXXXXXXXX.DGN  
 XXXXXXXXXXXXXXXXXXXX.DGN  
 B1515A.AA.DGN  
 B1515A.CONV.DGN  
 ANGLCOTE CHANNEL (DDBE).DGN  
 B1515A-IBS-RR1A.DGN  
 B1515A-HR000.DGN

**HYDROGRAPHIC AND BEACH EXAM SURVEY FY18**  
**9-FOOT PROJECT**  
 STA. 314+00 THRU STA. 344+00 CUT P-41 (GIWW)  
**PLAN**  
 Scale: AS SHOWN  
 Drawing no. **8**  
 SHEET 08 OF 21

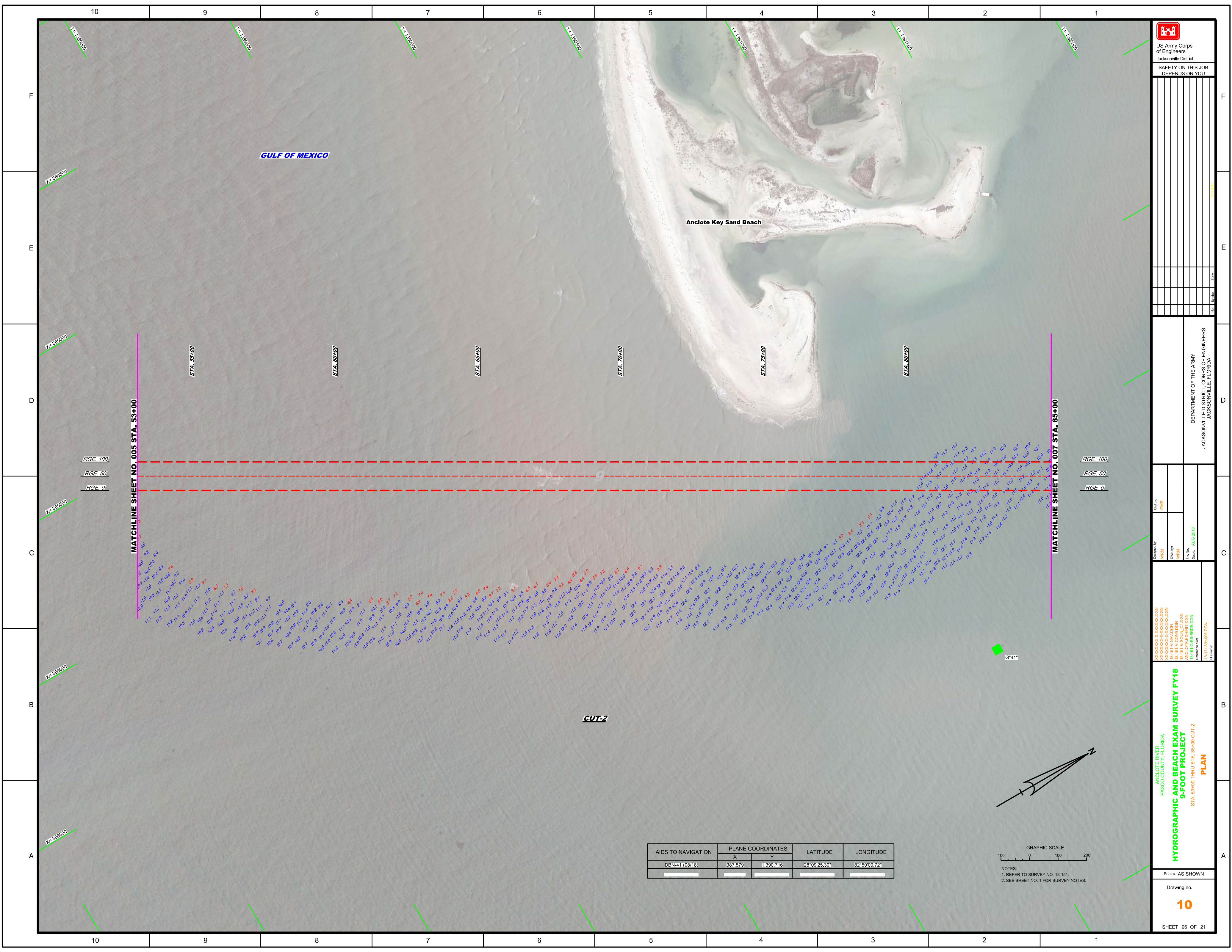
AIDS TO NAVIGATION	PLANE COORDINATES		LATITUDE	LONGITUDE
	X	Y		
LT-39 (08/18)	388,198	1,388,679	28°09'05.17"	82°49'53.64"
DBN-10 (08/18)	388,332	1,388,674	28°09'05.10"	82°49'52.15"
DBN-11 (08/18)	387,579	1,390,716	28°09'25.30"	82°50'00.72"



NOTES:  
 1. REFER TO SURVEY NO. 18-151.  
 2. SEE SHEET NO. 1 FOR SURVEY NOTES.







GULF OF MEXICO

Anclote Key Sand Beach

MATCHLINE SHEET NO. 005 STA. 53+00

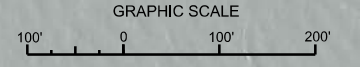
MATCHLINE SHEET NO. 007 STA. 85+00

RGE. 100  
RGE. 50  
RGE. 0

RGE. 100  
RGE. 50  
RGE. 0

CUT-2

AIDS TO NAVIGATION	PLANE COORDINATES		LATITUDE	LONGITUDE
	X	Y		
DBN-41 (08/18)	387,575	1,390,716	28°09'25.30"	82°50'00.72"



NOTES:  
1. REFER TO SURVEY NO. 18-151.  
2. SEE SHEET NO. 1 FOR SURVEY NOTES.

US Army Corps of Engineers  
Jacksonville District  
SAFETY ON THIS JOB DEPENDS ON YOU

DEPARTMENT OF THE ARMY  
JACKSONVILLE DISTRICT, CORPS OF ENGINEERS  
JACKSONVILLE, FLORIDA

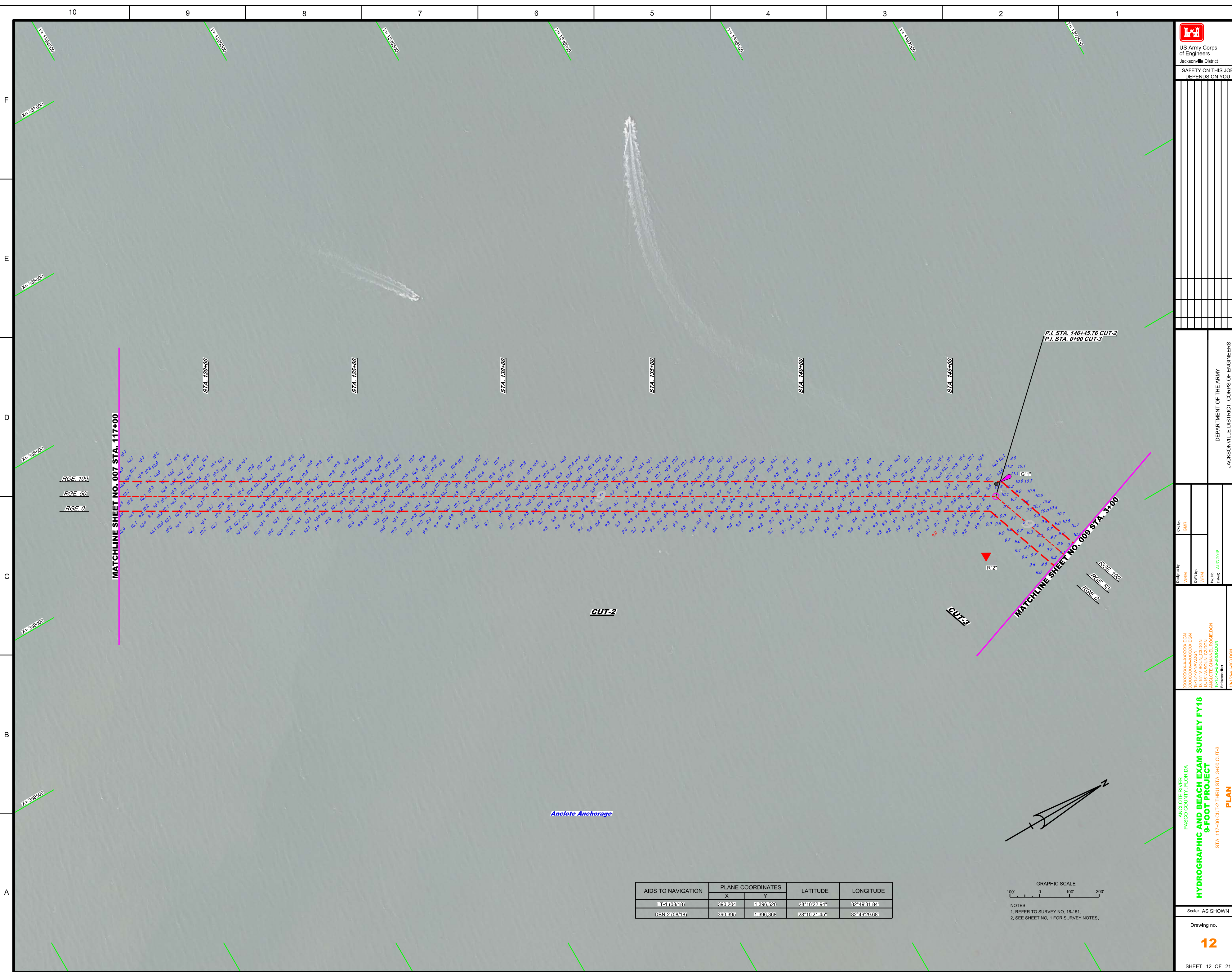
Designed by: WRM  
Checked by: GHR  
Date: AUG 2018

XXXXXXXXXXXXXXXXXXXX  
XXXXXXXXXXXXXXXXXXXX  
18-151-AV-CONDGN  
18-151-AV-CONDGN  
ANCLOTE EXHIBIT DGN  
18-151-GS-BR-BRDGN  
Reference files:  
18-151-HY-06-DGN

ANCLOTE RIVER  
PASCO COUNTY, FLORIDA  
**HYDROGRAPHIC AND BEACH EXAM SURVEY FY18**  
**9-FOOT PROJECT**  
STA. 53+00 THRU STA. 85+00 CUT-2  
**PLAN**

Scale: AS SHOWN  
Drawing no.  
**10**  
SHEET 06 OF 21





US Army Corps of Engineers  
 Jacksonville District  
 SAFETY ON THIS JOB DEPENDS ON YOU


DEPARTMENT OF THE ARMY  
 JACKSONVILLE DISTRICT, CORPS OF ENGINEERS  
 JACKSONVILLE, FLORIDA

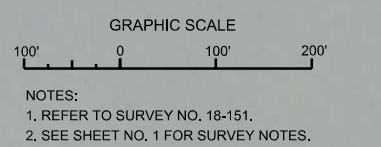
Checked by:	GHR
Designed by:	WRM
Drawn by:	WRM
File No:	18-151-HYDRO
Issue Date:	AUG 2018

XXXXXXXXXXXXXXXXXXXXXXXXXXXX  
 18-151-HYDRO-101  
 18-151-HYDRO-102  
 18-151-HYDRO-103  
 18-151-HYDRO-104  
 18-151-HYDRO-105

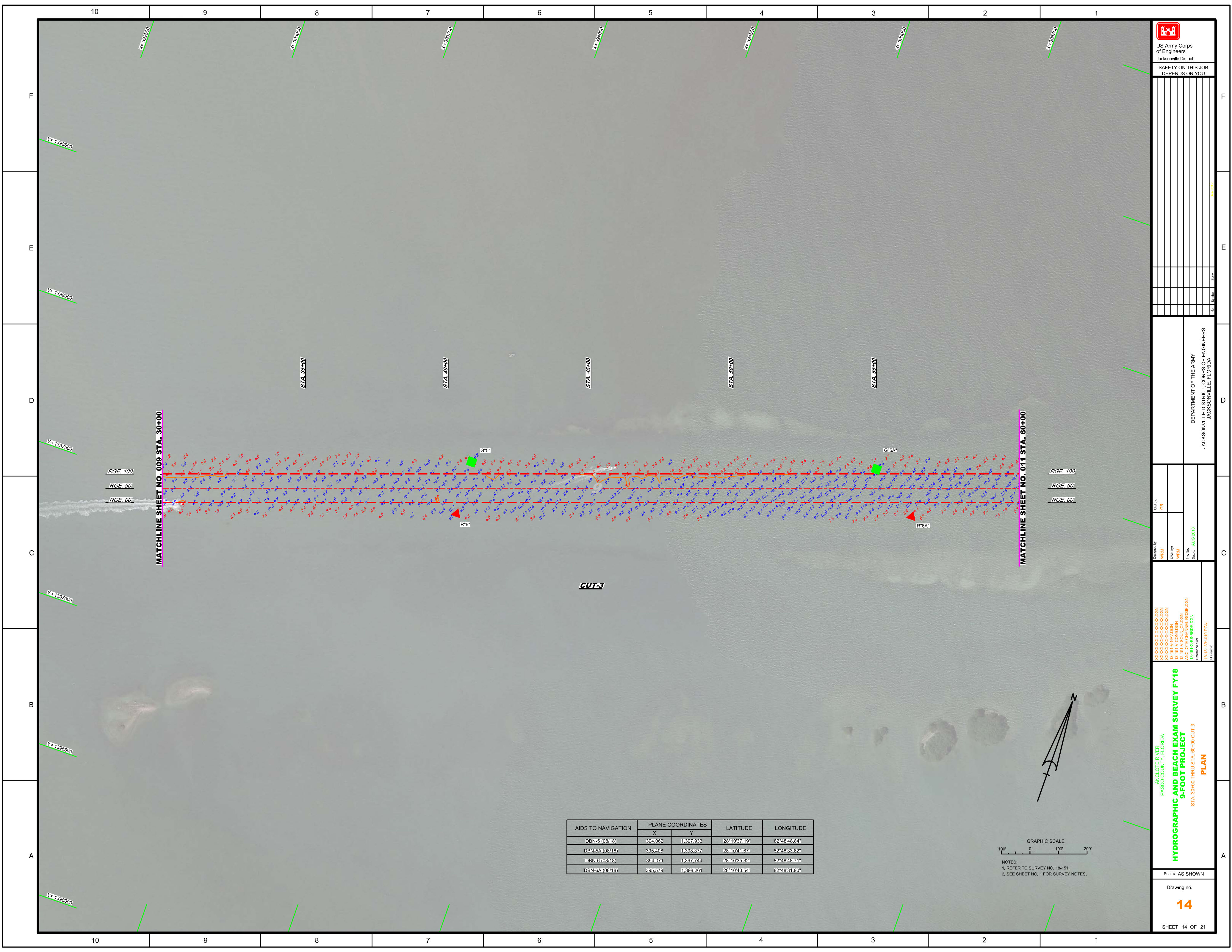
ANCILOTE RIVER  
 PASCO COUNTY, FLORIDA  
**HYDROGRAPHIC AND BEACH EXAM SURVEY FY18**  
**9-FOOT PROJECT**  
 STA. 117+00 CUT-2 THRU STA. 3+00 CUT-3  
**PLAN**

Scale: AS SHOWN  
 Drawing no.  
**12**  
 SHEET 12 OF 21

AIDS TO NAVIGATION	PLANE COORDINATES		LATITUDE	LONGITUDE
	X	Y		
18-1 (08/18)	390,204	1,396,520	28°10'22.94"	82°49'31.84"
DBN-2 (08/18)	390,395	1,398,368	28°10'21.45"	82°49'29.68"








  
 US Army Corps of Engineers  
 Jacksonville District  
 SAFETY ON THIS JOB  
 DEPENDS ON YOU

DEPARTMENT OF THE ARMY  
 JACKSONVILLE DISTRICT, CORPS OF ENGINEERS  
 JACKSONVILLE, FLORIDA

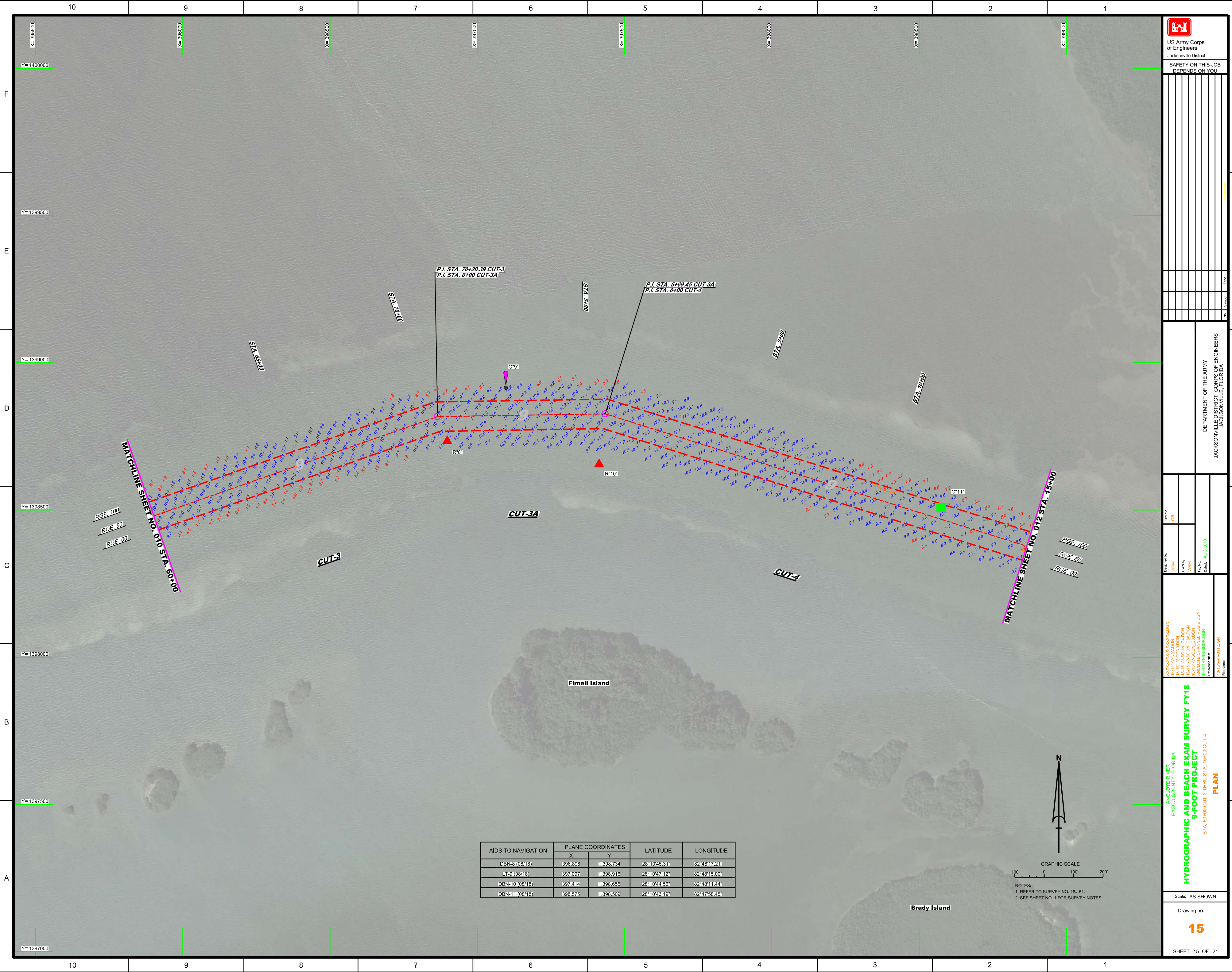
Drawn by: GRL  
 Designated by: WRM  
 Design: AUG 2018

ANGLICOTE RIVER  
 PASCO COUNTY, FLORIDA  
**HYDROGRAPHIC AND BEACH EXAM SURVEY FY18**  
**9-FOOT PROJECT**  
 STA. 39+00 THRU STA. 60+00 CUT-3  
**PLAN**

Scale: AS SHOWN  
 Drawing no.  
**14**  
 SHEET 14 OF 21

AIDS TO NAVIGATION	PLANE COORDINATES		LATITUDE	LONGITUDE
	X	Y		
DBN-5 (08/18)	394,062	1,397,933	28°10'37.19"	82°48'48.84"
DBN-5A (08/18)	395,408	1,398,377	28°10'41.67"	82°48'33.82"
DBN-5 (08/18)	394,074	1,397,744	28°10'35.32"	82°48'48.71"
DBN-6A (08/18)	395,579	1,398,261	28°10'40.54"	82°48'31.80"

GRAPHIC SCALE  
 100' 0 100' 200'  
 NOTES:  
 1. REFER TO SURVEY NO. 18-151.  
 2. SEE SHEET NO. 1 FOR SURVEY NOTES.



US Army Corps of Engineers  
Jacksonville District

SAFETY ON THIS JOB  
DEPENDS ON YOU

REV.	DATE	DESCRIPTION

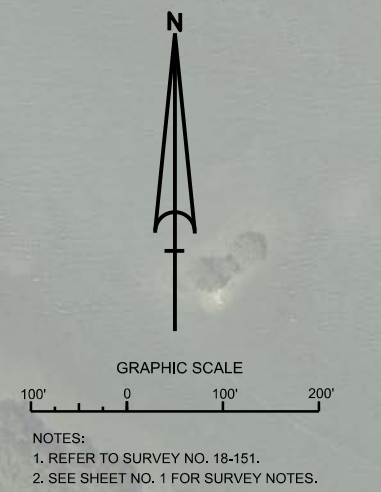
DEPARTMENT OF THE ARMY  
JACKSONVILLE DISTRICT, CORPS OF ENGINEERS  
JACKSONVILLE, FLORIDA

Checked By: GRL  
Designed By: WRM  
Drawn By: WRM  
File No.: 18-15-15-HR01 LDCN  
Date: AUG 2018

XXXXXXXXXXXXXXXXXXXX  
18-15-15-15-HR01 LDCN  
18-15-15-15-HR01 LDCN  
18-15-15-15-HR01 LDCN  
18-15-15-15-HR01 LDCN  
18-15-15-15-HR01 LDCN  
Reference files:  
18-15-15-HR01 LDCN

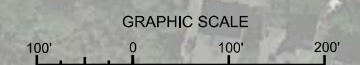
**ANGLOTE RIVER  
PASCO COUNTY, FLORIDA**  
**HYDROGRAPHIC AND BEACH EXAM SURVEY FY18  
9-FOOT PROJECT**  
STA. 60+00 CUT-3 THRU STA. 15+00 CUT-4  
**PLAN**

AIDS TO NAVIGATION	PLANE COORDINATES		LATITUDE	LONGITUDE
	X	Y		
DBN-8 (0818)	396.898	1398.724	28°10'45.31"	82°48'17.21"
LR-9 (0818)	397.097	1398.916	28°10'47.12"	82°48'15.00"
DBN-10 (0818)	397.414	1398.655	28°10'44.56"	82°48'11.44"
DBN-11 (0818)	398.576	1398.509	28°10'43.19"	82°47'58.45"



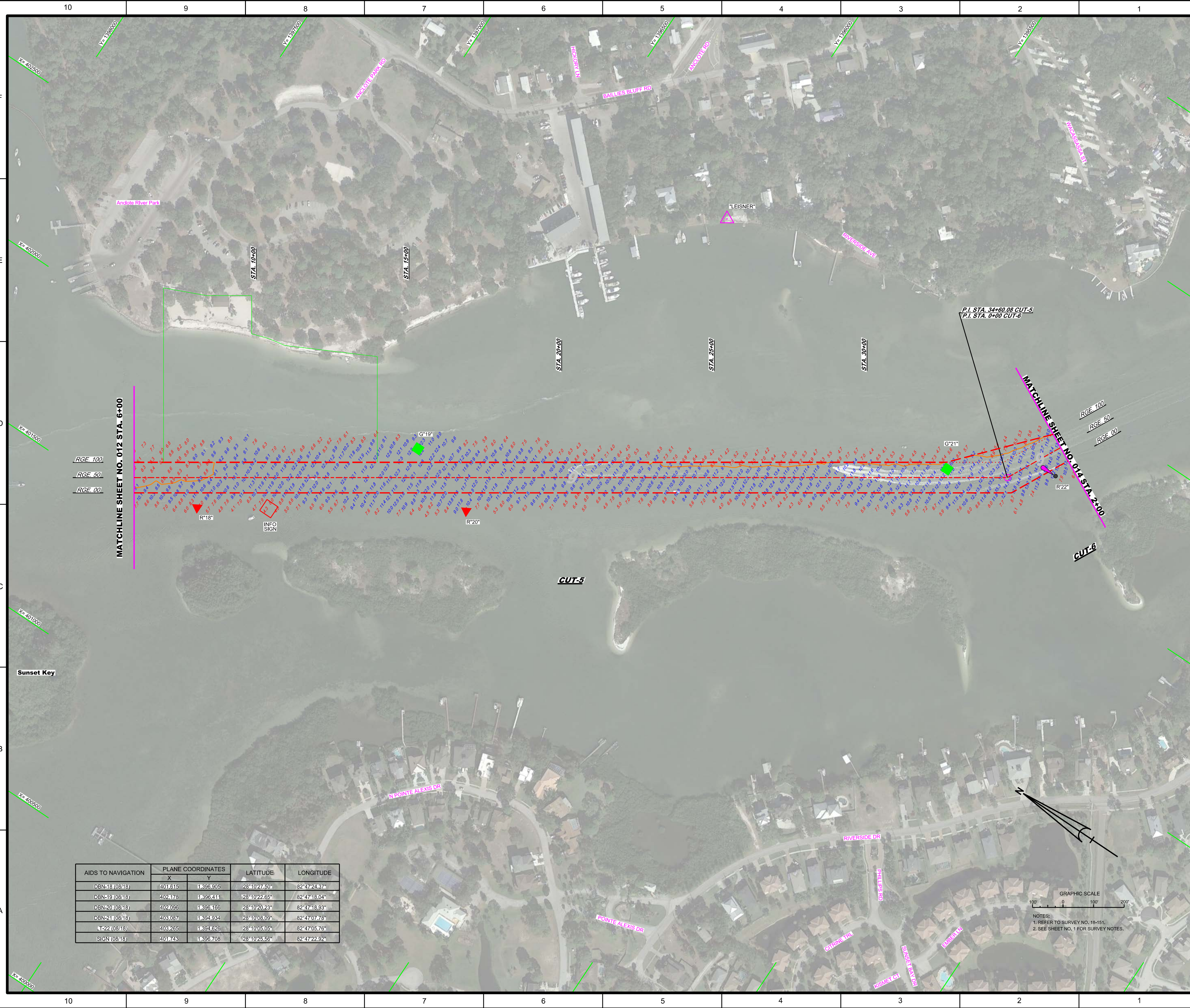


AIDS TO NAVIGATION	PLANE COORDINATES		LATITUDE	LONGITUDE
	X	Y		
DBN-12 (08/18)	399.221	1,398.187	28°10'40.04"	82°47'51.21"
DBN-13 (08/18)	399.867	1,398.107	28°10'59.29"	82°47'43.99"
DBN-14 (08/18)	401.086	1,397.596	28°10'34.31"	82°47'30.30"
DBN-16 (08/18)	401.249	1,397.444	28°10'32.82"	82°47'28.49"
LT-17 (08/18)	401.343	1,397.646	28°10'34.82"	82°47'27.46"
SIGN (08/18)	401.228	1,397.694	28°10'35.30"	82°47'28.75"



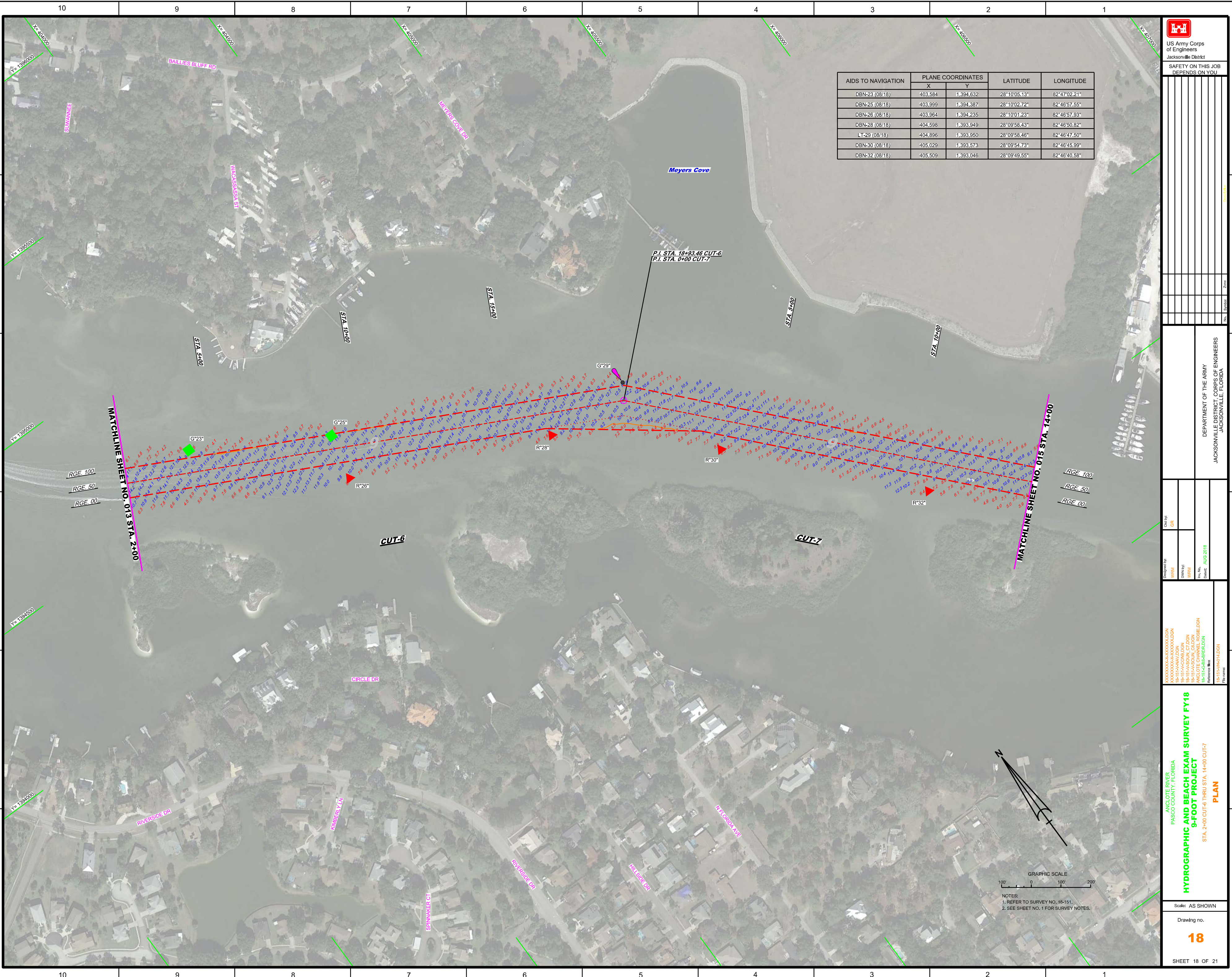
NOTES:  
1. REFER TO SURVEY NO. 18-151.  
2. SEE SHEET NO. 1 FOR SURVEY NOTES.





AIDS TO NAVIGATION	PLANE COORDINATES		LATITUDE	LONGITUDE
	X	Y		
DBN-16 (08/18)	401.615	18396.905	28°10'27.50"	82°47'24.37"
DBN-19 (08/18)	402.178	18396.411	28°10'22.65"	82°47'18.04"
DBN-20 (08/18)	402.096	18396.166	28°10'20.23"	82°47'18.93"
DBN-21 (08/18)	403.087	18394.934	28°10'08.09"	82°47'07.78"
L-122 (08/18)	403.265	18394.626	28°10'05.05"	82°47'05.76"
SIGN (08/18)	401.743	18396.708	28°10'25.56"	82°47'22.92"

GRAPHIC SCALE  
100' 0 100' 200'  
NOTES:  
1. REFER TO SURVEY NO. 18-151.  
2. SEE SHEET NO. 1 FOR SURVEY NOTES.



AIDS TO NAVIGATION	PLANE COORDINATES		LATITUDE	LONGITUDE
	X	Y		
DBN-23 (08/18)	403,584	1,394,632	28°10'05.13"	82°47'02.21"
DBN-25 (08/18)	403,999	1,394,387	28°10'02.72"	82°46'57.55"
DBN-26 (08/18)	403,964	1,394,235	28°10'01.23"	82°46'57.93"
DBN-28 (08/18)	404,598	1,393,949	28°09'58.43"	82°46'50.82"
LT-29 (08/18)	404,896	1,393,950	28°09'58.46"	82°46'47.50"
DBN-30 (08/18)	405,029	1,393,573	28°09'54.73"	82°46'45.99"
DBN-32 (08/18)	405,509	1,393,046	28°09'49.55"	82°46'40.58"



US Army Corps of Engineers  
Jacksonville District

SAFETY ON THIS JOB  
DEPENDS ON YOU


DEPARTMENT OF THE ARMY  
JACKSONVILLE DISTRICT, CORPS OF ENGINEERS  
JACKSONVILLE, FLORIDA

Checked by: GRL  
Designed by: WRM  
Drawn by: WRM  
File Name: AUG 2018  
Reference files: 18-15-HY-RI-L00N, 18-15-PA-CO-000000-L00N, 18-15-PA-CO-000000-L00N, 18-15-PA-SO-000000-L00N, 18-15-PA-CO-000000-L00N, 18-15-HY-RI-L00N

**ANGLOTE RIVER**  
**PASCO COUNTY, FLORIDA**  
**HYDROGRAPHIC AND BEACH EXAM SURVEY FY18**  
**9-FOOT PROJECT**  
STA. 2+00 CUT-6 THRU STA. 14+00 CUT-7  
**PLAN**

Scale: AS SHOWN

Drawing no.

**18**

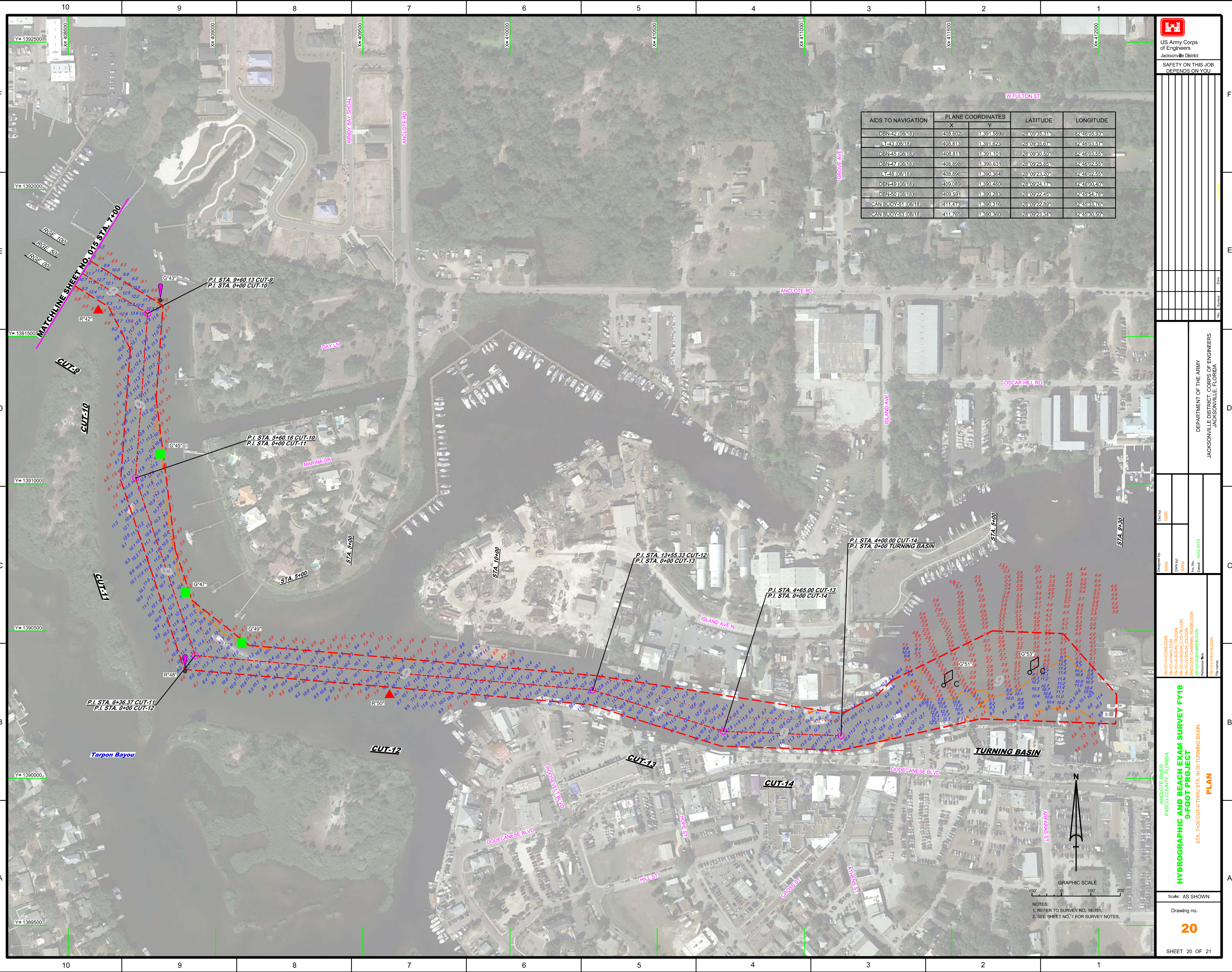
SHEET 18 OF 21



NOTES:  
1. REFER TO SURVEY NO. 18-151.  
2. SEE SHEET NO. 1 FOR SURVEY NOTES.



AIDS TO NAVIGATION	PLANE COORDINATES	LATITUDE	LONGITUDE	
	X	Y		
DBN-42 (08/18)	408.602	11391.589	28°09'35.31"	82°46'05.93"
DBN-43 (08/18)	408.813	11391.623	28°09'35.67"	82°46'08.57"
DBN-45 (08/18)	408.811	11391.101	28°09'30.50"	82°46'03.55"
DBN-47 (08/18)	408.898	11390.631	28°09'25.85"	82°46'02.55"
DBN-48 (08/18)	408.896	11390.364	28°09'23.20"	82°46'02.55"
DBN-49 (08/18)	408.089	11390.460	28°09'24.17"	82°46'00.40"
DBN-50 (08/18)	409.591	11390.283	28°09'22.45"	82°45'54.78"
CAN BUOY-51 (08/18)	411.473	11390.316	28°09'22.89"	82°45'53.76"
CAN BUOY-53 (08/18)	411.765	11390.500	28°09'23.34"	82°45'50.50"



DEPARTMENT OF THE ARMY  
JACKSONVILLE DISTRICT, CORPS OF ENGINEERS  
JACKSONVILLE, FLORIDA

Drawn by: WRM  
Checked by: GHR  
Date: AUG 2018

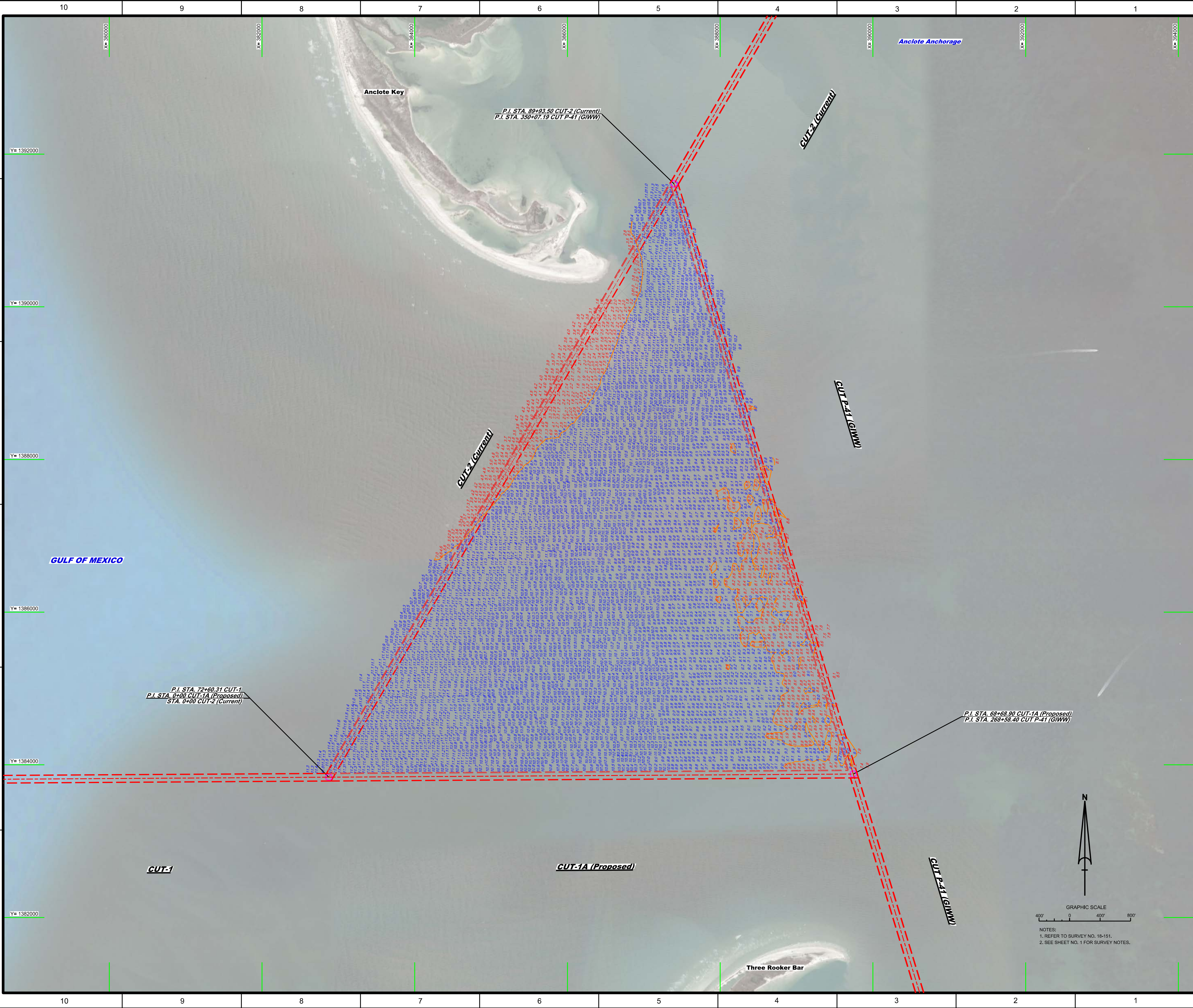
18-15-HA-CON-001  
18-15-HA-CON-002  
18-15-HA-CON-003  
18-15-HA-CON-004  
18-15-HA-CON-005  
18-15-HA-CON-006  
18-15-HA-CON-007  
18-15-HA-CON-008  
18-15-HA-CON-009  
18-15-HA-CON-010  
18-15-HA-CON-011  
18-15-HA-CON-012  
18-15-HA-CON-013  
18-15-HA-CON-014  
18-15-HA-CON-015  
18-15-HA-CON-016  
18-15-HA-CON-017  
18-15-HA-CON-018  
18-15-HA-CON-019  
18-15-HA-CON-020  
18-15-HA-CON-021  
18-15-HA-CON-022  
18-15-HA-CON-023  
18-15-HA-CON-024  
18-15-HA-CON-025  
18-15-HA-CON-026  
18-15-HA-CON-027  
18-15-HA-CON-028  
18-15-HA-CON-029  
18-15-HA-CON-030  
18-15-HA-CON-031  
18-15-HA-CON-032  
18-15-HA-CON-033  
18-15-HA-CON-034  
18-15-HA-CON-035  
18-15-HA-CON-036  
18-15-HA-CON-037  
18-15-HA-CON-038  
18-15-HA-CON-039  
18-15-HA-CON-040  
18-15-HA-CON-041  
18-15-HA-CON-042  
18-15-HA-CON-043  
18-15-HA-CON-044  
18-15-HA-CON-045  
18-15-HA-CON-046  
18-15-HA-CON-047  
18-15-HA-CON-048  
18-15-HA-CON-049  
18-15-HA-CON-050  
18-15-HA-CON-051  
18-15-HA-CON-052  
18-15-HA-CON-053  
18-15-HA-CON-054  
18-15-HA-CON-055  
18-15-HA-CON-056  
18-15-HA-CON-057  
18-15-HA-CON-058  
18-15-HA-CON-059  
18-15-HA-CON-060  
18-15-HA-CON-061  
18-15-HA-CON-062  
18-15-HA-CON-063  
18-15-HA-CON-064  
18-15-HA-CON-065  
18-15-HA-CON-066  
18-15-HA-CON-067  
18-15-HA-CON-068  
18-15-HA-CON-069  
18-15-HA-CON-070  
18-15-HA-CON-071  
18-15-HA-CON-072  
18-15-HA-CON-073  
18-15-HA-CON-074  
18-15-HA-CON-075  
18-15-HA-CON-076  
18-15-HA-CON-077  
18-15-HA-CON-078  
18-15-HA-CON-079  
18-15-HA-CON-080  
18-15-HA-CON-081  
18-15-HA-CON-082  
18-15-HA-CON-083  
18-15-HA-CON-084  
18-15-HA-CON-085  
18-15-HA-CON-086  
18-15-HA-CON-087  
18-15-HA-CON-088  
18-15-HA-CON-089  
18-15-HA-CON-090  
18-15-HA-CON-091  
18-15-HA-CON-092  
18-15-HA-CON-093  
18-15-HA-CON-094  
18-15-HA-CON-095  
18-15-HA-CON-096  
18-15-HA-CON-097  
18-15-HA-CON-098  
18-15-HA-CON-099  
18-15-HA-CON-100

**HYDROGRAPHIC AND BEACH EXAM SURVEY FY18**  
**9-FOOT PROJECT**  
STA. 7+00 CUT-9 THRU STA. 9+30 TURNING BASIN

**PLAN**

Scale: AS SHOWN  
Drawing no. **20**  
SHEET 20 OF 21

NOTES:  
1. REFER TO SURVEY NO. 18-151.  
2. SEE SHEET NO. 1 FOR SURVEY NOTES.



GULF OF MEXICO

Anclote Anchorage

Anclote Key

P.I. STA. 89+93.50 CUT-2 (Current)  
P.I. STA. 350+07.19 CUT P-41 (GIWW)

CUT-2 (Current)

CUT-2 (Current)

CUT P-41 (GIWW)

P.I. STA. 72+60.31 CUT-1  
P.I. STA. 0+00 CUT-1A (Proposed)  
STA. 0+00 CUT-2 (Current)

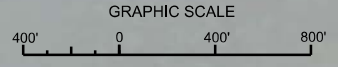
CUT-1

CUT-1A (Proposed)

P.I. STA. 68+68.90 CUT-1A (Proposed)  
P.I. STA. 268+58.40 CUT P-41 (GIWW)

CUT P-41 (GIWW)

Three Rooker Bar



NOTES:  
1. REFER TO SURVEY NO. 18-151.  
2. SEE SHEET NO. 1 FOR SURVEY NOTES.

 US Army Corps of Engineers Jacksonville District SAFETY ON THIS JOB DEPENDS ON YOU		DEPARTMENT OF THE ARMY JACKSONVILLE DISTRICT CORPS OF ENGINEERS JACKSONVILLE, FLORIDA
Designated By: WRM DWN/PT	Checked By: GHR	
Reference File: 18-15-FA-001.DGN 18-15-FA-002.DGN 18-15-FA-003.DGN 18-15-FA-004.DGN 18-15-FA-005.DGN 18-15-FA-006.DGN 18-15-FA-007.DGN 18-15-FA-008.DGN 18-15-FA-009.DGN 18-15-FA-010.DGN 18-15-FA-011.DGN 18-15-FA-012.DGN 18-15-FA-013.DGN 18-15-FA-014.DGN 18-15-FA-015.DGN 18-15-FA-016.DGN 18-15-FA-017.DGN 18-15-FA-018.DGN 18-15-FA-019.DGN 18-15-FA-020.DGN 18-15-FA-021.DGN 18-15-FA-022.DGN 18-15-FA-023.DGN 18-15-FA-024.DGN 18-15-FA-025.DGN 18-15-FA-026.DGN 18-15-FA-027.DGN 18-15-FA-028.DGN 18-15-FA-029.DGN 18-15-FA-030.DGN 18-15-FA-031.DGN 18-15-FA-032.DGN 18-15-FA-033.DGN 18-15-FA-034.DGN 18-15-FA-035.DGN 18-15-FA-036.DGN 18-15-FA-037.DGN 18-15-FA-038.DGN 18-15-FA-039.DGN 18-15-FA-040.DGN 18-15-FA-041.DGN 18-15-FA-042.DGN 18-15-FA-043.DGN 18-15-FA-044.DGN 18-15-FA-045.DGN 18-15-FA-046.DGN 18-15-FA-047.DGN 18-15-FA-048.DGN 18-15-FA-049.DGN 18-15-FA-050.DGN 18-15-FA-051.DGN 18-15-FA-052.DGN 18-15-FA-053.DGN 18-15-FA-054.DGN 18-15-FA-055.DGN 18-15-FA-056.DGN 18-15-FA-057.DGN 18-15-FA-058.DGN 18-15-FA-059.DGN 18-15-FA-060.DGN 18-15-FA-061.DGN 18-15-FA-062.DGN 18-15-FA-063.DGN 18-15-FA-064.DGN 18-15-FA-065.DGN 18-15-FA-066.DGN 18-15-FA-067.DGN 18-15-FA-068.DGN 18-15-FA-069.DGN 18-15-FA-070.DGN 18-15-FA-071.DGN 18-15-FA-072.DGN 18-15-FA-073.DGN 18-15-FA-074.DGN 18-15-FA-075.DGN 18-15-FA-076.DGN 18-15-FA-077.DGN 18-15-FA-078.DGN 18-15-FA-079.DGN 18-15-FA-080.DGN 18-15-FA-081.DGN 18-15-FA-082.DGN 18-15-FA-083.DGN 18-15-FA-084.DGN 18-15-FA-085.DGN 18-15-FA-086.DGN 18-15-FA-087.DGN 18-15-FA-088.DGN 18-15-FA-089.DGN 18-15-FA-090.DGN 18-15-FA-091.DGN 18-15-FA-092.DGN 18-15-FA-093.DGN 18-15-FA-094.DGN 18-15-FA-095.DGN 18-15-FA-096.DGN 18-15-FA-097.DGN 18-15-FA-098.DGN 18-15-FA-099.DGN 18-15-FA-100.DGN		Date: AUG 2018
<b>HYDROGRAPHIC AND BEACH EXAM SURVEY FY18 9-FOOT PROJECT</b> TRIANGLE AREA BETWEEN CUT-1A (Proposed), CUT-2 (Current) AND CUT P-41 (GIWW) <b>PLAN</b>		
Scale: AS SHOWN Drawing no. <b>21</b>		
SHEET 21 OF 21		