

BLIND PASS PINELLAS COUNTY, FLORIDA HYDROGRAPHIC EXAM SURVEY FY18 10-FOOT PROJECT

SURVEY NOTES

- REFER TO SURVEY NO. 18-132.
- SOUNDINGS ARE IN FEET AND TENTHS AND REFER TO NOAA'S REPORTED MEAN LOWER LOW WATER (MLLW) OF THE 1983-2001 TIDAL EPOCH.
- TIDAL REDUCTIONS WERE OBTAINED UTILIZING A REAL-TIME KINEMATIC (RTK) GPS AND REFERENCED TO MLLW UTILIZING A HYPACK KINEMATIC TIDE DATUM (KTD) MODEL. KTD FILE NAME IS: "SPC-FL-WEST-2010-12-07.KTD".
- ALL ELEVATIONS ARE BELOW THE CHART DATUM UNLESS PRECEDED BY A (+) SIGN.
- PLANE COORDINATES ARE BASED ON THE TRANSVERSE MERCATOR PROJECTION FOR THE WEST ZONE OF FLORIDA AND REFERENCED TO NORTH AMERICAN DATUM OF 1983 (NAD83).
- ALL STATIONING REFERS TO THE CENTERLINE OF THE CHANNEL.
- THIS SURVEY WAS PERFORMED USING REAL-TIME KINEMATIC (RTK) GPS POSITIONING WITH THE FOLLOWING REFERENCE BASE LOCATION:
REFERENCE BASE LOCATED AT "LK BP 3A RESET" (PID: BBFP28)
- DEPTHS DEPICTED BY THIS SURVEY ARE REFERENCED TO MLLW, TIDAL EPOCH 1983-2001 AS REPORTED BY THE NATIONAL OCEANIC AND ATMOSPHERIC ADMINISTRATION (NOAA). NOAA'S DATUM MODEL WAS USED AND CALIBRATED TO THE PUBLISHED MLLW HEIGHTS OF THE BENCHMARKS ASSOCIATED WITH THE TIDE GAGE SITES SPECIFIED BELOW:
REFERENCE BASE LOCATED AT "BP-1" USED FOR ALL CUTS. (PID: AG0368)
- VERTICAL MEASUREMENTS WERE MADE USING AN EDGETECH MODEL 6205 INTERFEROMETRIC SYSTEM OPERATING AT 500-900 KHZ AND A ROSS SMARTSOUNDER MODEL 835C USING A DUAL-FREQUENCY 28200 KHZ SINGLE-BEAM TRANSDUCER. ALL SOUNDINGS SHOWN ARE IN HIGH FREQUENCY.

VESSEL	DATE OF SURVEY	CUT
SB-44	02 MAY 2018	CUTS 2 THRU 4 & 6
SB-50	25 SEP 2018	CUTS 1 AND 5
SB-50	25 OCT 2018	EBB SHOAL AREA

LEGEND	
	MONUMENT
	LIGHTED BEACON
	GREEN DAYBEACON
	RED DAYBEACON
	RED LIGHTED BUOY
	GREEN LIGHTED BUOY
	CAN BUOY
	NUN BUOY
	TIDE STAFF
	PROJECT DEPTH

US Army Corps of Engineers
Jacksonville District

SAFETY ON THIS JOB
DEPENDS ON YOU

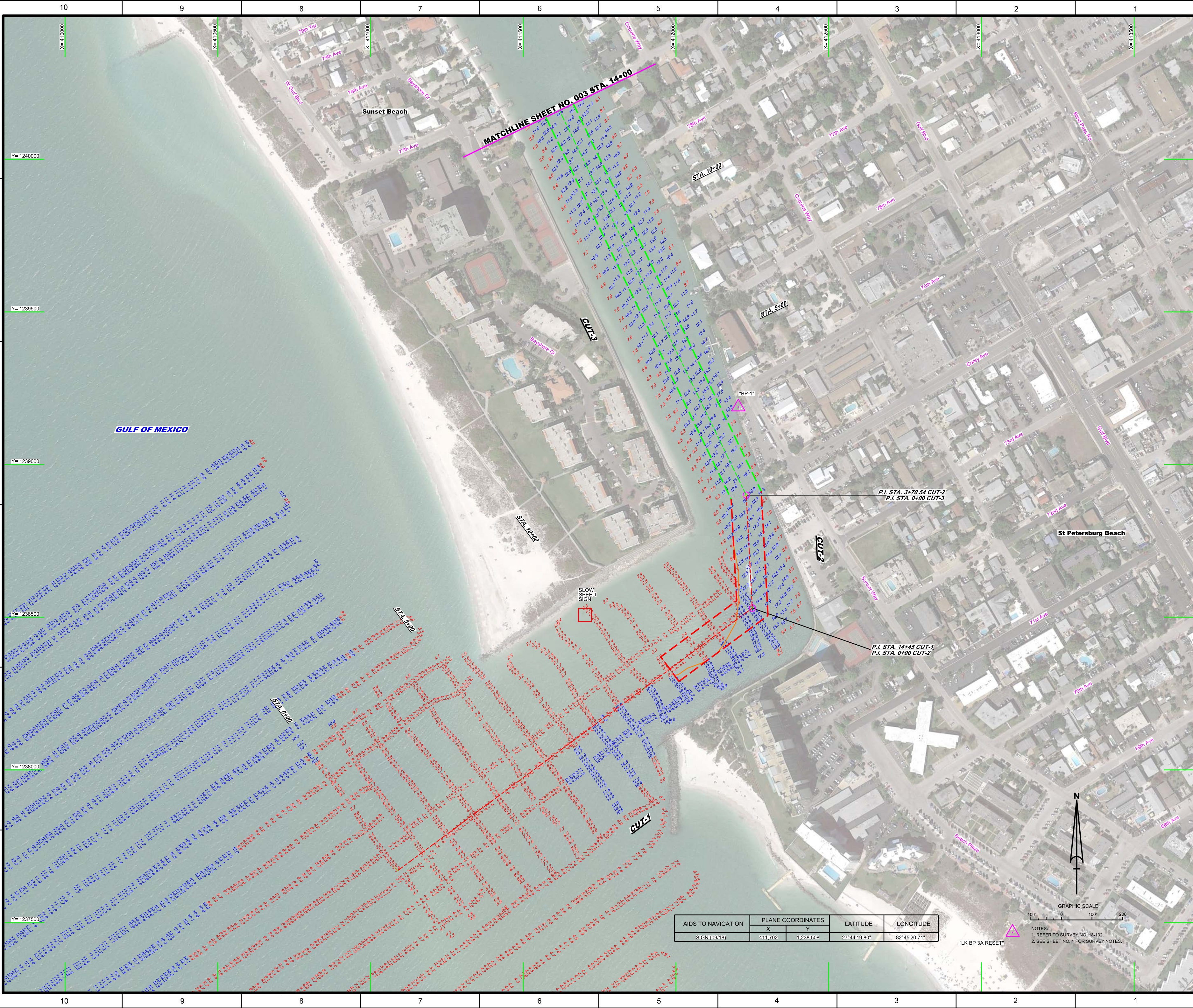
DEPARTMENT OF THE ARMY
JACKSONVILLE DISTRICT, CORPS OF ENGINEERS
JACKSONVILLE, FLORIDA


Blind Pass
Pinellas County, Florida
**HYDROGRAPHIC EXAM SURVEY FY18
10-FOOT PROJECT**
INDEX, LOCATION AND VICINITY
MAP

Scale: AS SHOWN

Drawing no.
1

SHEET 01 OF 05





US Army Corps of Engineers
Jacksonville District


SAFETY ON THIS JOB
DEPENDS ON YOU

DEPARTMENT OF THE ARMY JACKSONVILLE DISTRICT, CORPS OF ENGINEERS JACKSONVILLE, FLORIDA									
Checked by:	GHR	Designed by:	18-132-AMW/DGN	Drawn by:	WRM	Project No.:	18-132-AMW/DGN	Scale:	AS SHOWN
Reviewed by:	WRM	Checked by:	WRM	Project No.:	18-132-AMW/DGN	Scale:	AS SHOWN	<p style="margin: 0;">HYDROGRAPHIC EXAM SURVEY FY18</p> <p style="margin: 0;">10-FOOT PROJECT</p> <p style="margin: 0;">STA. 0+00 CUT-1 THRU STA. 14+00 CUT-3</p> <p style="margin: 0; color: orange;">PLAN</p>	
<p>18-132-AMW/DGN 18-132-AMW/DGN 18-132-AMW/DGN 18-132-AMW/DGN 18-132-AMW/DGN 18-132-AMW/DGN 18-132-AMW/DGN 18-132-AMW/DGN 18-132-AMW/DGN 18-132-AMW/DGN</p>									
<p>BLIND PASS PINELAS COUNTY, FLORIDA HYDROGRAPHIC EXAM SURVEY FY18 10-FOOT PROJECT STA. 0+00 CUT-1 THRU STA. 14+00 CUT-3 PLAN</p>									
<p>Notes: 1. REFER TO SURVEY NO. 18-132. 2. SEE SHEET NO. 1 FOR SURVEY NOTES.</p>									

AIDS TO NAVIGATION	PLANE COORDINATES		LATITUDE	LONGITUDE
	X	Y		
SIGN (09/18)	411.702	1,238.508	27°44'19.80"	82°45'20.71"

LK BP 3A RESET





 US Army Corps of Engineers
 Jacksonville District
 SAFETY ON THIS JOB
 DEPENDS ON YOU

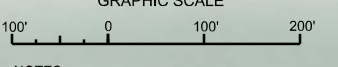
DEPARTMENT OF THE ARMY
 JACKSONVILLE DISTRICT, CORPS OF ENGINEERS
 JACKSONVILLE, FLORIDA

Drawn by: GHR
 Checked by: GHR
 Date: SEP 10/2018

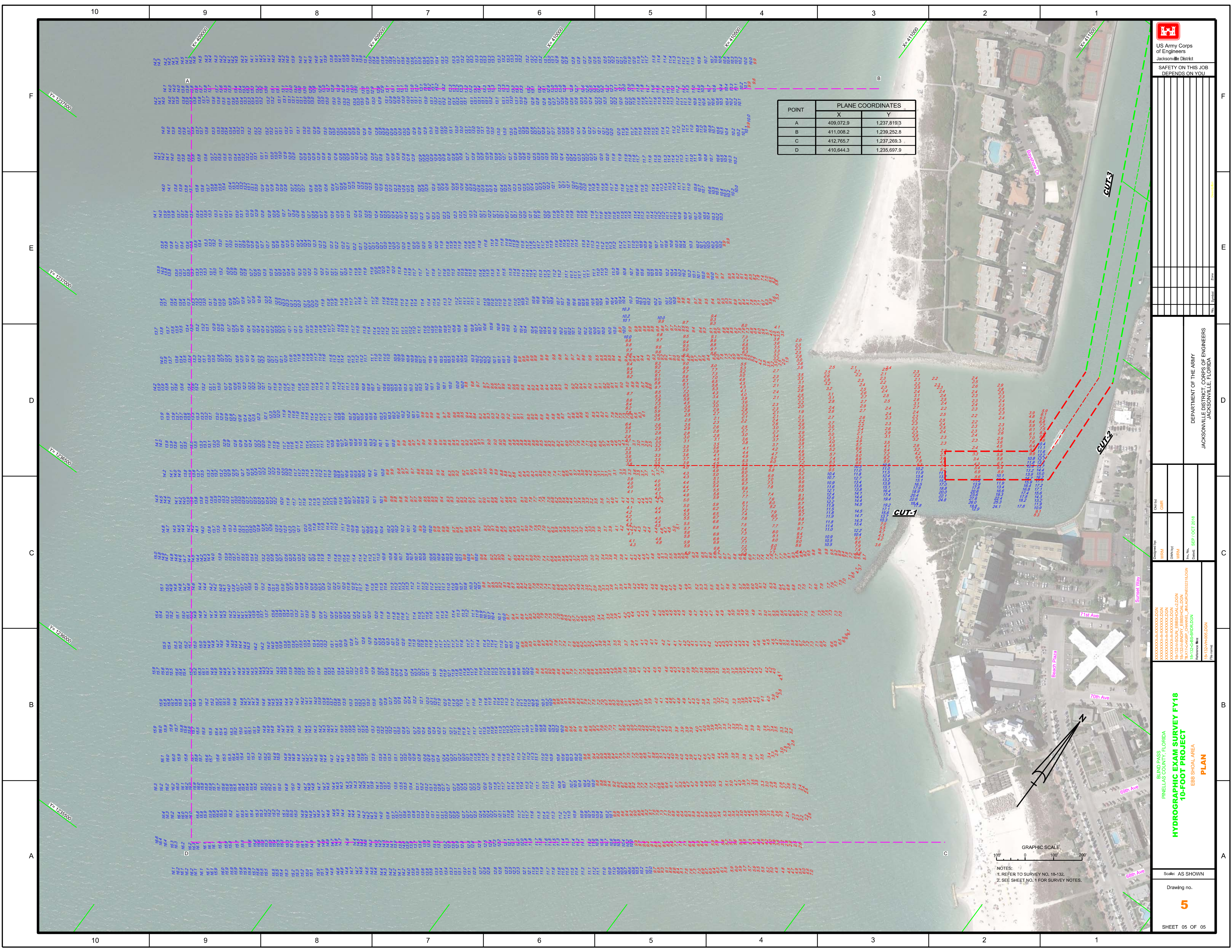
HYDROGRAPHIC EXAM SURVEY FY18
10-FOOT PROJECT
 STA. 1+00 CUT-5 THRU STA. 7+41.25 CUT-6
PLAN

Scale: AS SHOWN
 Drawing no.
4
 SHEET 04 OF 05

AIDS TO NAVIGATION	PLANE COORDINATES		LATITUDE	LONGITUDE
	X	Y		
SIGN (09/18)	410.655	1,243.309	27°45'07.28"	82°45'32.69"



NOTES:
 1. REFER TO SURVEY NO. 18-132.
 2. SEE SHEET NO. 1 FOR SURVEY NOTES.



POINT	PLANE COORDINATES	
	X	Y
A	409,072.9	1,237,819.3
B	411,008.2	1,239,252.8
C	412,765.7	1,237,269.3
D	410,644.3	1,235,697.9

US Army Corps of Engineers
Jacksonville District
SAFETY ON THIS JOB
DEPENDS ON YOU

DEPARTMENT OF THE ARMY
JACKSONVILLE DISTRICT, CORPS OF ENGINEERS
JACKSONVILLE, FLORIDA

Designed by: **WRM**

Checked by: **WRM**

Drawn by: **WRM**

Scale: **AS SHOWN**

Reference: **18-132-BS-BR10ALDGN**

Revision: **01**

DATE: **SEP / OCT 2018**

PROJECT: **HYDROGRAPHIC EXAM SURVEY FY18**

AREA: **EBB SHOALS AREA**

PLAN

Scale: **AS SHOWN**

Drawing no. **5**

SHEET **05** OF **05**

Scale: **AS SHOWN**

Drawing no. **5**

SHEET **05** OF **05**

GRAPHIC SCALE
100' 0' 100' 200'

NOTES:
1. REFER TO SURVEY NO. 18-132.
2. SEE SHEET NO. 1 FOR SURVEY NOTES.