

# MIAMI HARBOR DADE COUNTY, FLORIDA HYDROGRAPHIC EXAM SURVEY FY18

### SURVEY NOTES

- REFER TO SURVEY NOS. 18-125.
  - SOUNDINGS ARE IN FEET AND TENTHS AND REFER TO NOAA'S REPORTED MEAN LOWER LOW WATER (MLLW) OF THE 1983-2001 TIDAL EPOCH.
  - TIDAL REDUCTIONS WERE OBTAINED UTILIZING A REAL-TIME KINEMATIC (RTK) GPS AND REFERENCED TO MLLW UTILIZING A HYPACK KINEMATIC TIDE DATUM (KTD) MODEL NAMED "MIAMI-HBR&RIV-03AUG2010.KTD".
  - ALL ELEVATIONS ARE BELOW THE CHART DATUM UNLESS PRECEDED BY A (+) SIGN.
  - PLANE COORDINATES ARE BASED ON THE TRANSVERSE MERCATOR PROJECTION FOR THE EAST ZONE OF FLORIDA AND REFERENCED TO NORTH AMERICAN DATUM OF 1983, REALIZATION OF 2007 (NAD83(2007)).
  - ALL STATIONING REFERS TO THE CENTERLINE OF THE CHANNEL.
  - THIS SURVEY WAS PERFORMED USING REAL-TIME KINEMATIC (RTK) GPS POSITIONING WITH THE FOLLOWING REFERENCE BASE LOCATIONS:  
REFERENCE BASE LOCATED AT "USCG MIAMI ARP" (OPUS PID: BBDD68)  
TIDE STAFF SET NEAR BAYSIDE MARINA FROM "MH-16 RM-1" (PID: AC2178)
  - DEPTHS DEPICTED BY THIS SURVEY ARE REFERENCED TO MLLW, TIDAL EPOCH 1983-2001, AS REPORTED BY THE NATIONAL OCEANIC AND ATMOSPHERIC ADMINISTRATION (NOAA). NOAA'S VDATUM MODEL WAS USED AND CALIBRATED TO THE PUBLISHED MLLW HEIGHTS OF THE BENCHMARKS ASSOCIATED WITH THE TIDE GAGE SITE SPECIFIED BELOW:  
NOAA TIDAL STATION 872-3165 MIAMI BISCAYNE BAY, FLORIDA FOR ALL CUTS.
  - VERTICAL MEASUREMENTS WERE MADE USING A R2 SONIC MODEL 2024 MULTI-BEAM SYSTEM AND A ROSS MODEL 835 SMART SOUNDER WITH A DUAL-FREQUENCY (28/200 KHZ) TRANSDUCER. ALL SOUNDINGS SHOWN ARE IN HIGH FREQUENCY.
- | VESSEL        | DATE OF SURVEY | CUT   |
|---------------|----------------|---|
| SV FLORIDA II | 04 APR 2018    | CUT-1   |
| SV FLORIDA II | 05 APR 2018    | CUT-2, 3, TURNING BASIN, DODGE IS., LUMMUS ISLAND TURNING BASIN |
| SV FLORIDA II | 07-08 APR 2018 | SOUTH SHIP CHANNEL, SOUTH SHIP CHANNEL, CUT-4                   |
- AIDS TO NAVIGATION WERE LOCATED DURING THIS SURVEY.
  - THE INFORMATION DEPICTED ON THIS MAP REPRESENTS THE RESULTS OF SURVEYS MADE ON THE DATES INDICATED ABOVE AND CAN ONLY BE CONSIDERED AS INDICATING THE GENERAL CONDITIONS AT THAT TIME. THIS CHART IS SOLELY FOR THE DISTRIBUTION OF AVAILABLE DEPTHS AT THE TIME OF THE SURVEY.
  - SURVEY ACCURACY PERFORMANCE STANDARDS, QUALITY CONTROL, AND QUALITY ASSURANCE REQUIREMENTS WERE FOLLOWED DURING THIS SURVEY IN ACCORDANCE WITH USACE EM 1110-2-1003, HYDROGRAPHIC SURVEYING, 30 NOV 13 AND EM 1110-2-6056, STANDARDS AND PROCEDURES FOR REFERENCING PROJECT ELEVATION GRADES TO NATIONWIDE VERTICAL DATUMS, 31 DEC 10.

LEGEND	
	GPS MONUMENT
	LIGHTED BEACON
	GREEN DAYBEACON
	RED DAYBEACON
	RED LIGHTED BUOY
	GREEN LIGHTED BUOY
	CAN BUOY
	NUN BUOY
	TIDE STAFF
	PROJECT DEPTH

US Army Corps of Engineers  
Jacksonville District  
SAFETY ON THIS JOB DEPENDS ON YOU

---

DEPARTMENT OF THE ARMY  
JACKSONVILLE DISTRICT, CORPS OF ENGINEERS  
JACKSONVILLE, FLORIDA

---

Checked by: GRL  
Designed by: WRM  
Drawn by: WRM  
File No: 18-125-HR-01-DGN  
Date: APR 2018

---

MIAMI HARBOR, FLORIDA  
DADE COUNTY, FLORIDA  
**HYDROGRAPHIC EXAM SURVEY FY18**  
34, 36, 50 AND 52-FOOT PROJECT  
INDEX, LOCATION AND VICINITY MAP

---

Scale: AS SHOWN  
Drawing no. **1**  
SHEET 01 OF 18









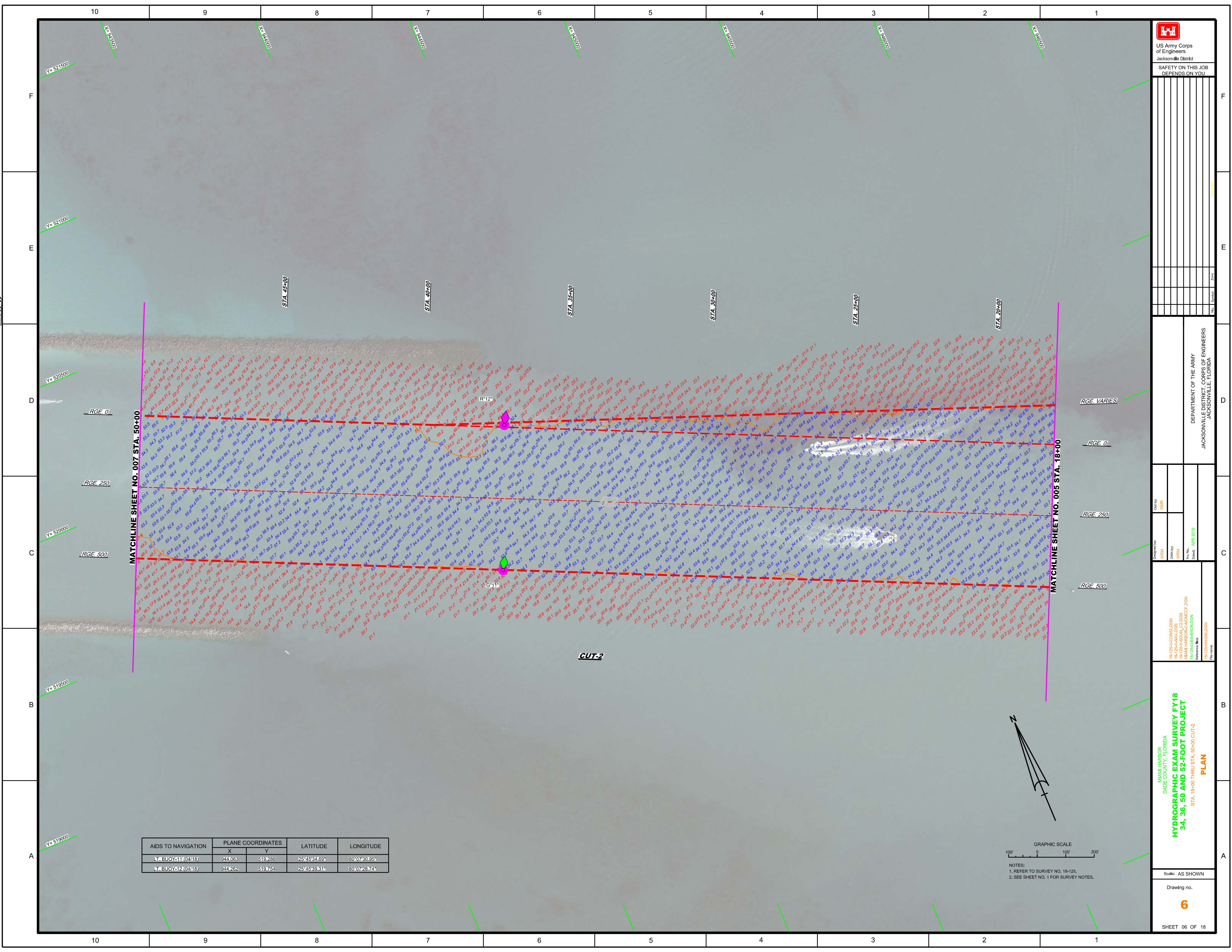








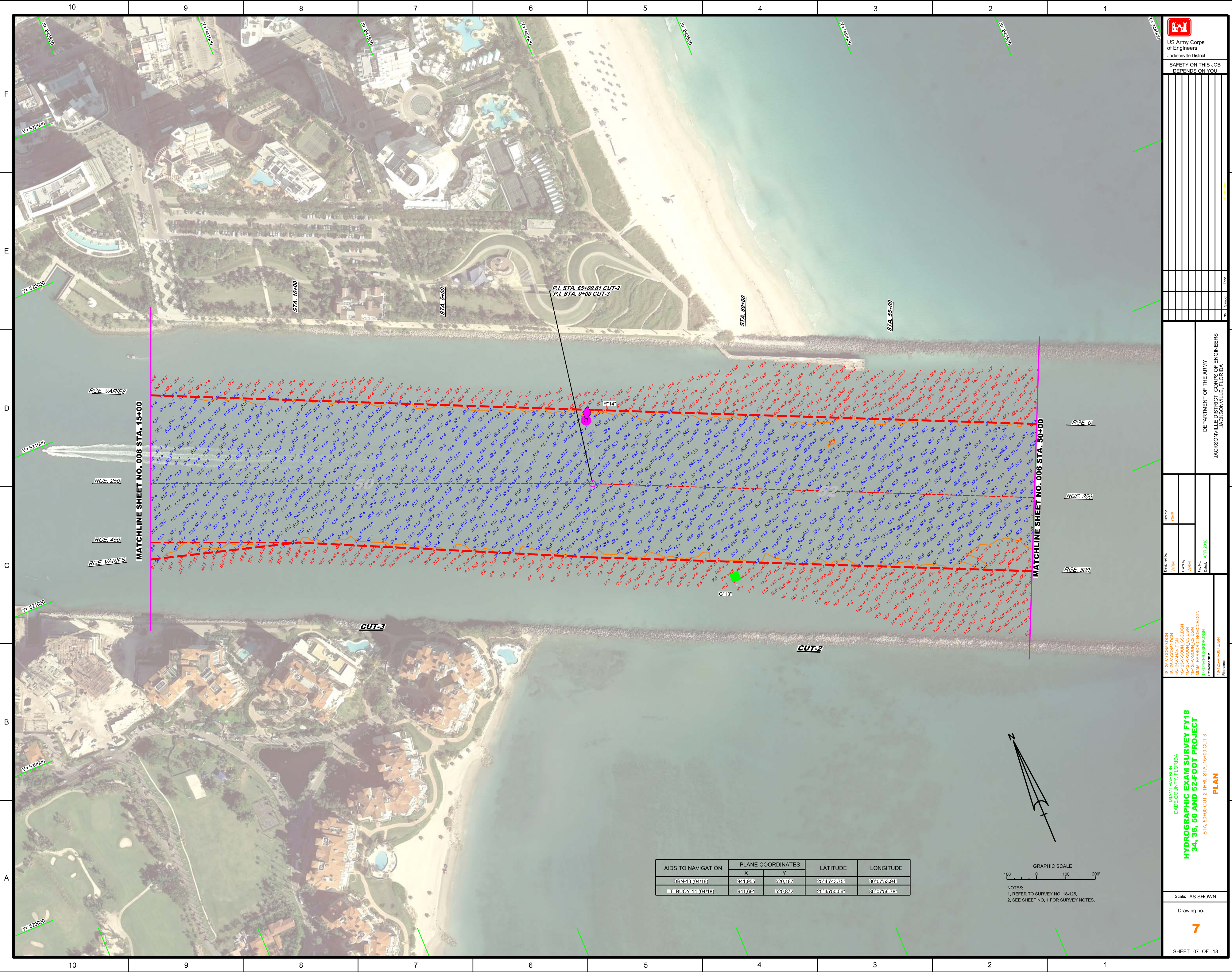




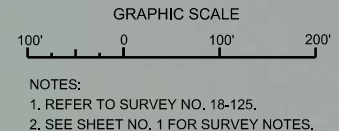
AIDS TO NAVIGATION	PLANE COORDINATES		LATITUDE	LONGITUDE
	X	Y		
LT. BUOY-11 (0418)	944,063	519,286	25°45'34.69"	80°07'28.95"
LT. BUOY-12 (0418)	944,262	519,754	25°45'39.31"	80°07'28.74"

GRAPHIC SCALE  
100' 0 100' 200'  
NOTES:  
1. REFER TO SURVEY NO. 18-125.  
2. SEE SHEET NO. 1 FOR SURVEY NOTES.





AIDS TO NAVIGATION	PLANE COORDINATES		LATITUDE	LONGITUDE
	X	Y		
DBN-13 (04/18)	941.655	420.187	25°45'43.75"	80°07'53.94"
L-1 BUOY-14 (04/18)	941.691	520.872	25°45'50.56"	80°07'58.78"



MATCHLINE SHEET NO. 008 STA. 15+00

MATCHLINE SHEET NO. 006 STA. 50+00

RGE. VARIES  
 RGE. 250  
 RGE. 450  
 RGE. VARIES

RGE. 0  
 RGE. 250  
 RGE. 500

P.I. STA. 65+00 CUT-2  
 P.I. STA. 0+00 CUT-3

STA. 10+00

STA. 5+00

STA. 60+00

STA. 55+00

CUT-3

CUT-2

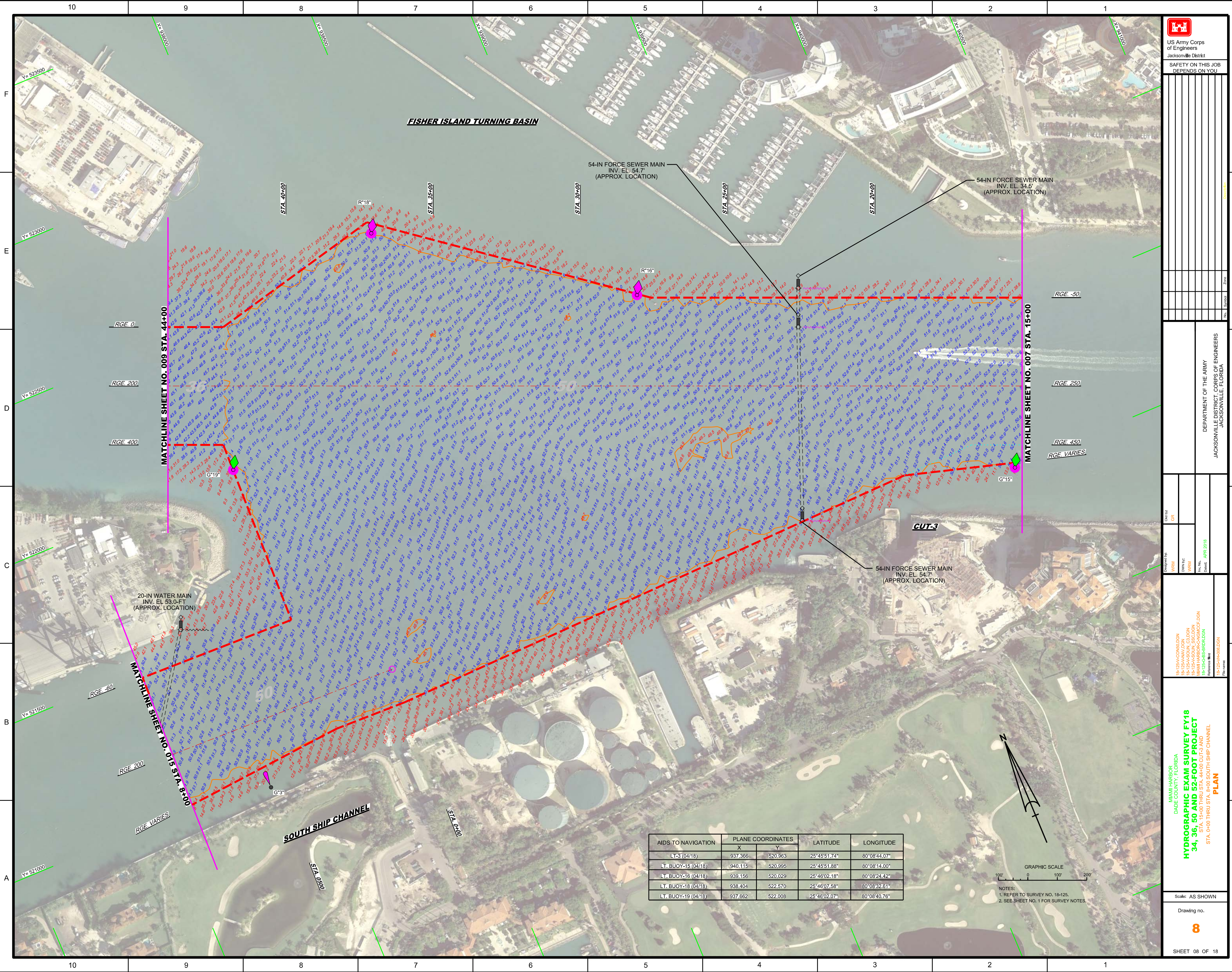
G°13'

Scale: AS SHOWN

Drawing no.

**7**





**FISHER ISLAND TURNING BASIN**

54-IN FORCE SEWER MAIN  
INV. EL. 54.7  
(APPROX. LOCATION)

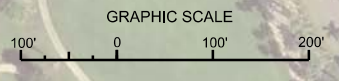
54-IN FORCE SEWER MAIN  
INV. EL. 34.5  
(APPROX. LOCATION)

20-IN WATER MAIN  
INV. EL. 53.0-FT  
(APPROX. LOCATION)

54-IN FORCE SEWER MAIN  
INV. EL. 54.7  
(APPROX. LOCATION)

**SOUTH SHIP CHANNEL**

AIDS TO NAVIGATION	PLANE COORDINATES		LATITUDE	LONGITUDE
	X	Y		
LT-3 (04/18)	937,366	520,963	25°45'1.74"	80°08'44.07"
LT, BUOY-15 (04/18)	940,115	520,995	25°45'51.88"	80°08'14.00"
LT, BUOY-16 (04/18)	938,156	520,029	25°46'02.18"	80°08'24.42"
LT, BUOY-18 (04/18)	938,404	522,570	25°46'07.58"	80°08'32.61"
LT, BUOY-19 (04/18)	937,662	522,008	25°46'02.07"	80°08'40.76"



NOTES:  
1. REFER TO SURVEY NO. 18-125.  
2. SEE SHEET NO. 1 FOR SURVEY NOTES.

US Army Corps of Engineers  
Jacksonville District  
SAFETY ON THIS JOB  
DEPENDS ON YOU

---

DEPARTMENT OF THE ARMY  
JACKSONVILLE DISTRICT, CORPS OF ENGINEERS  
JACKSONVILLE, FLORIDA

---

Call by: GRI  
Designed by: WRM  
Drawn by: WRM  
Checked by: WRM  
Date: APR 2018

---

18-125A-COORDON  
18-125A-NAVY-CON  
18-125A-SOIL-COLON  
18-125A-SS-CANAL-CON  
18-125A-SS-BRIDGON  
Reference: 18-125A-HR-06LGN

---

**HYDROGRAPHIC EXAM SURVEY FY18**  
**34, 36, 50 AND 52-FOOT PROJECT**  
STA. 15+00 THRU STA. 40+00 CUT-3 AND  
STA. 0+00 THRU STA. 8+00 SOUTH SHIP CHANNEL  
**PLAN**

---

Scale: AS SHOWN

Drawing no.  
**8**

SHEET 08 OF 18



