

PASS-A-GRILLE PINELLAS COUNTY, FLORIDA PROJECT CONDITION SURVEY FY18 8 & 10-FOOT PROJECT

SURVEY NOTES

- REFER TO SURVEY NO. 18-091.
- SOUNDINGS ARE IN FEET AND TENTHS AND REFER TO NOAA'S REPORTED MEAN LOWER LOW WATER (MLLW) OF THE 1983-2001 TIDAL EPOCH.
- TIDAL REDUCTIONS WERE OBTAINED UTILIZING A REAL-TIME KINEMATIC (RTK) GPS AND REFERENCED TO MLLW UTILIZING A HYPACK KINEMATIC TIDE DATUM (KTD) MODEL. KTD FILE NAME IS: "SPC-FL-WEST-2010-12-07.KTD".
- ALL ELEVATIONS ARE BELOW THE CHART DATUM UNLESS PRECEDED BY A (+) SIGN.
- PLANE COORDINATES ARE BASED ON THE TRANSVERSE MERCATOR PROJECTION FOR THE WEST ZONE OF FLORIDA AND REFERENCED TO NORTH AMERICAN DATUM OF 1983 (NAD83).
- ALL STATIONING REFERS TO THE CENTERLINE OF THE CHANNEL.
- THIS SURVEY WAS PERFORMED USING REAL-TIME KINEMATIC (RTK) GPS POSITIONING WITH THE FOLLOWING REFERENCE BASE LOCATION:
REFERENCE BASE LOCATED AT "NOAA C" (NGS/IOPUS PID: AG2154)
TIDE STAFF LOCATED FROM "NOAA C" (NGS/IOPUS PID: AG2154)
- DEPTHS DEPICTED BY THIS SURVEY ARE REFERENCED TO MLLW, TIDAL EPOCH 1983-2001 AS REPORTED BY THE NATIONAL OCEANIC AND ATMOSPHERIC ADMINISTRATION (NOAA). NOAA'S VDUTUM MODEL WAS USED AND CALIBRATED TO THE PUBLISHED MLLW HEIGHTS OF THE BENCHMARKS ASSOCIATED WITH THE TIDE GAGE SITES SPECIFIED BELOW:
NOAA TIDAL STATION 872-6428, TIERRA VERDE, FLORIDA FOR CUTS.
VERTICAL MEASUREMENTS WERE MADE USING A ROSS MODEL 835C SMART SOUNDER WITH DUAL-FREQUENCY (28/200 KHZ) SINGLE-BEAM TRANSDUCER AND AN EDGETECH MODEL 6205 BATHYMETRIC SYSTEM. ALL SOUNDINGS SHOWN ARE IN HIGH FREQUENCY.
- NOAA TIDAL STATION 872-6428, TIERRA VERDE, FLORIDA FOR CUTS.
- DEPTHS DEPICTED BY THIS SURVEY ARE REFERENCED TO MLLW, TIDAL EPOCH 1983-2001 AS REPORTED BY THE NATIONAL OCEANIC AND ATMOSPHERIC ADMINISTRATION (NOAA). NOAA'S VDUTUM MODEL WAS USED AND CALIBRATED TO THE PUBLISHED MLLW HEIGHTS OF THE BENCHMARKS ASSOCIATED WITH THE TIDE GAGE SITES SPECIFIED BELOW:
NOAA TIDAL STATION 872-6428, TIERRA VERDE, FLORIDA FOR CUTS.
VERTICAL MEASUREMENTS WERE MADE USING A ROSS MODEL 835C SMART SOUNDER WITH DUAL-FREQUENCY (28/200 KHZ) SINGLE-BEAM TRANSDUCER AND AN EDGETECH MODEL 6205 BATHYMETRIC SYSTEM. ALL SOUNDINGS SHOWN ARE IN HIGH FREQUENCY.
- AIDS TO NAVIGATION WERE LOCATED DURING THIS SURVEY.
- THE INFORMATION DEPICTED ON THIS MAP REPRESENTS THE RESULTS OF SURVEYS MADE ON THE DATES INDICATED ABOVE AND CAN ONLY BE CONSIDERED AS INDICATING THE GENERAL CONDITIONS AT THAT TIME. THIS CHART IS SOLELY FOR THE DISTRIBUTION OF AVAILABLE DEPTHS AT THE TIME OF THE SURVEY.
- SURVEY ACCURACY PERFORMANCE STANDARDS, QUALITY CONTROL, AND QUALITY ASSURANCE REQUIREMENTS WERE FOLLOWED DURING THIS SURVEY IN ACCORDANCE WITH USACE EM 1110-2-1003, HYDROGRAPHIC SURVEYING, 30 NOV 13.

LEGEND	
	MONUMENT
	LIGHTED BEACON
	GREEN DAYBEACON
	RED DAYBEACON
	RED LIGHTED BUOY
	GREEN LIGHTED BUOY
	CAN BUOY
	NUN BUOY
	TIDE STAFF
	PROJECT DEPTH

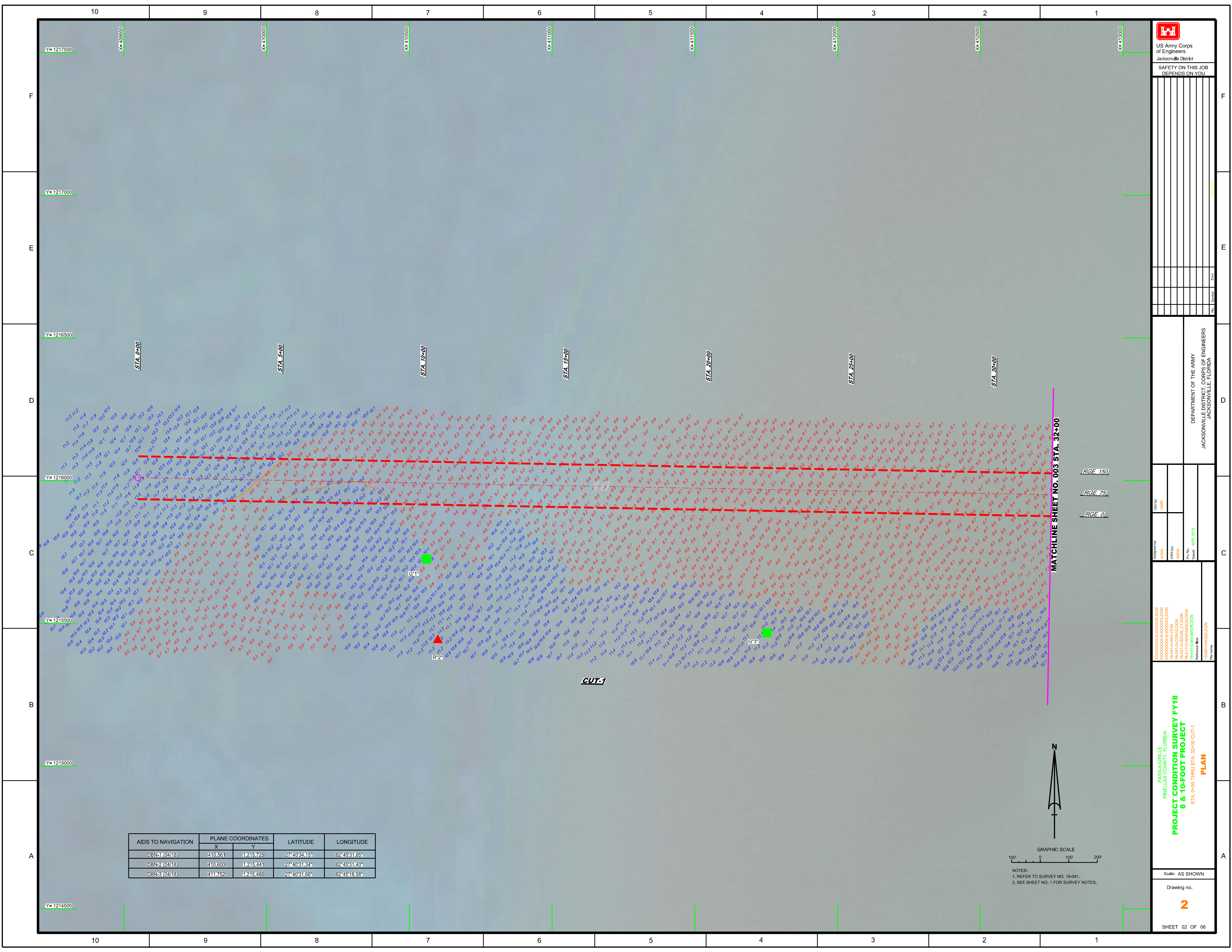
US Army Corps of Engineers
Jacksonville District
SAFETY ON THIS JOB
DEPENDS ON YOU


DEPARTMENT OF THE ARMY
JACKSONVILLE DISTRICT, CORPS OF ENGINEERS
JACKSONVILLE, FLORIDA

DESIGNED BY: WRM
CHECKED BY: WRM
DATE: APR 2018

PROJECT CONDITION SURVEY FY18
8 & 10-FOOT PROJECT
INDEX, LOCATION AND VICINITY
MAP

Scale: AS SHOWN
Drawing no. 1
SHEET 01 OF 06

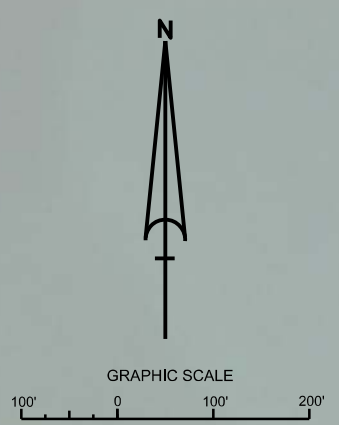



 US Army Corps
 of Engineers
 Jacksonville District
 SAFETY ON THIS JOB
 DEPENDS ON YOU

Designed by:	WRM	Checked by:	GHR
Drawn by:	WRM	Reviewed by:	WRM
Scale:	AS SHOWN	Date:	APR 2018

PASSA-CRILLE
 PINELLAS COUNTY, FLORIDA
PROJECT CONDITION SURVEY FY18
8 & 10-FOOT PROJECT
 STA. 0+00 THRU STA. 32+00 CUT-1
PLAN

AIDS TO NAVIGATION	PLANE COORDINATES		LATITUDE	LONGITUDE
	X	Y		
DBN-1 (04/18)	410.561	1215.725	27°40'34.15"	82°45'31.85"
DBN-2 (04/18)	410.600	1215.444	27°40'31.34"	82°45'31.40"
DBN-3 (04/18)	411.752	1215.466	27°40'31.66"	82°45'18.58"



NOTES:
 1. REFER TO SURVEY NO. 18-001.
 2. SEE SHEET NO. 1 FOR SURVEY NOTES.

MATCHLINE SHEET NO. 003 STA. 32+00

RGE 150
 RGE 76
 RGE 0

CUT-1

A B C D E F

A B C D E F

10 9 8 7 6 5 4 3 2 1

Y= 1217500
 Y= 1217000
 Y= 1216500
 Y= 1216000
 Y= 1215500
 Y= 1215000
 Y= 1214500

X= 408500
 X= 410000
 X= 410500
 X= 411000
 X= 411500
 X= 412000
 X= 412500
 X= 413000

STA. 0+00

STA. 5+00

STA. 10+00

STA. 15+00

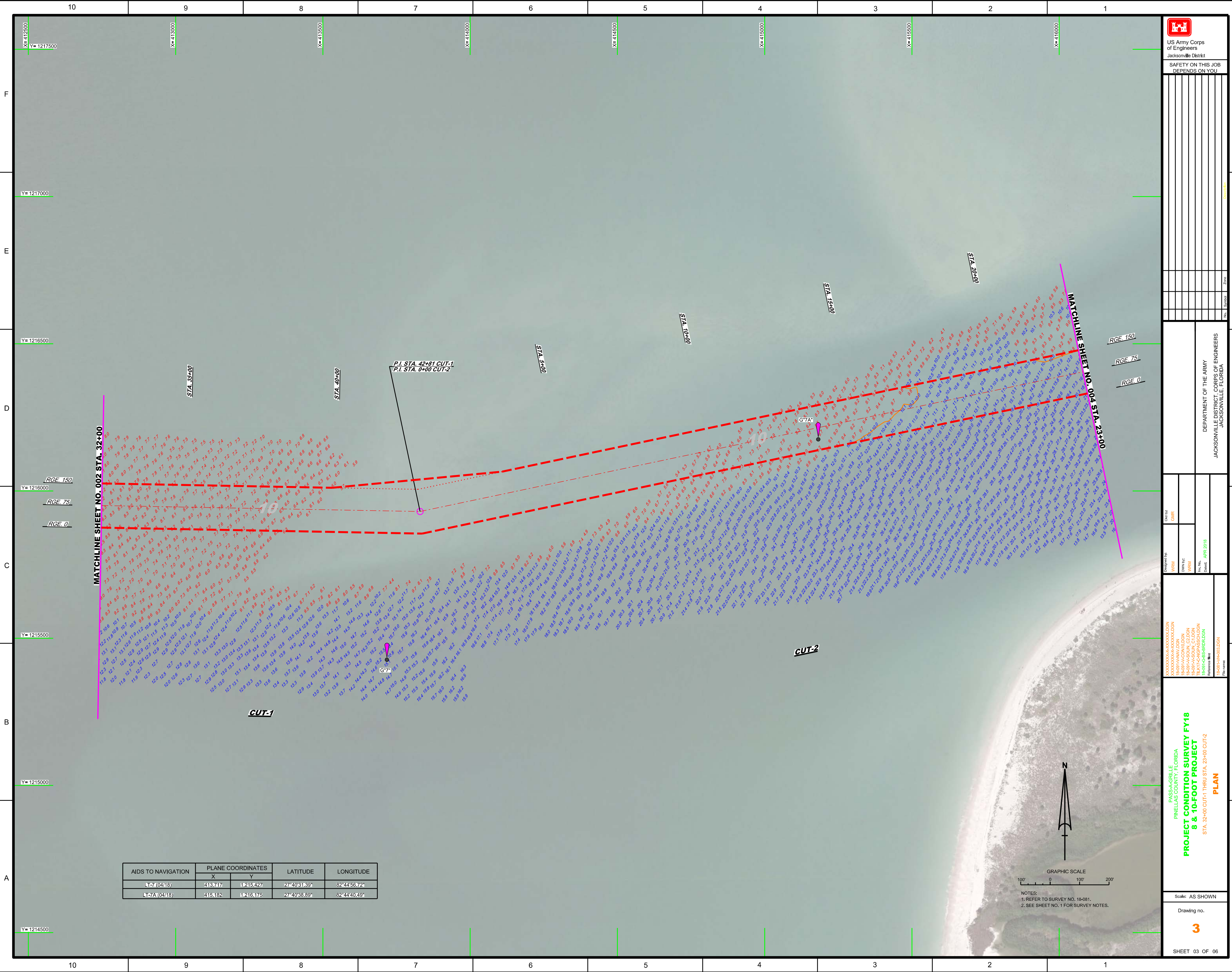
STA. 20+00

STA. 25+00

STA. 30+00


G-1

G-3



AIDS TO NAVIGATION	PLANE COORDINATES		LATITUDE	LONGITUDE
	X	Y		
LT-7 (04/18)	413,717	1215,427	27°40'31.39"	82°44'56.72"
LT-7A (04/18)	415,182	1216,175	27°40'38.89"	82°44'40.49"

NOTES:
 1. REFER TO SURVEY NO. 18-081.
 2. SEE SHEET NO. 1 FOR SURVEY NOTES.


 US Army Corps of Engineers
 Jacksonville District
 SAFETY ON THIS JOB
 DEPENDS ON YOU

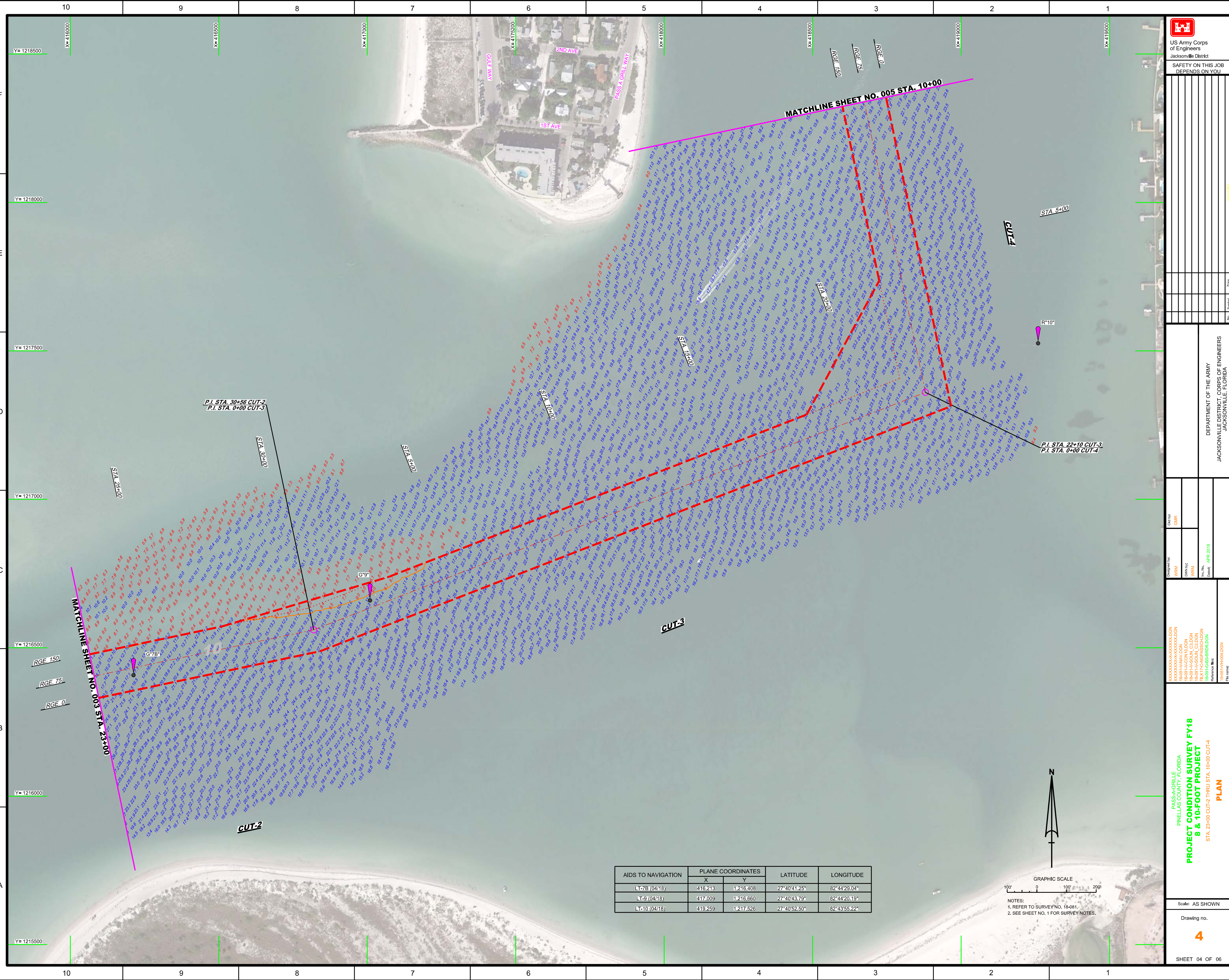
PROJECT CONDITION SURVEY FY18
8 & 10-FOOT PROJECT
 STA. 32+00 CUT-1 THRU STA. 23+00 CUT-2
PLAN

Scale: AS SHOWN
 Drawing no. **3**
 SHEET 03 OF 06

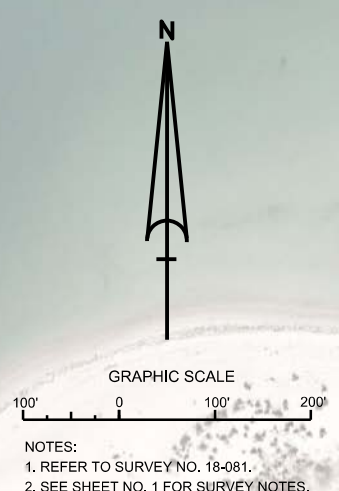
DESIGNED BY: WRM, JWH, WRM
 CHECKED BY: GHR
 DATE: APR 2018

PROJECT: 18-081-FH00-000
 DRAWING: 18-081-FH00-000
 TITLE: PROJECT CONDITION SURVEY
 PROJECT: 18-081-FH00-000
 DATE: APR 2018

DEPARTMENT OF THE ARMY
 JACKSONVILLE DISTRICT, CORPS OF ENGINEERS
 JACKSONVILLE, FLORIDA



AIDS TO NAVIGATION	PLANE COORDINATES		LATITUDE	LONGITUDE
	X	Y		
LT-7B (04/18)	416.213	1.216.408	27°40'41.25"	82°44'29.04"
LT-9 (04/18)	417.009	1.216.660	27°40'43.79"	82°44'20.19"
LT-10 (04/18)	419.259	1.217.626	27°40'52.50"	82°43'55.22"



US Army Corps of Engineers
Jacksonville District
SAFETY ON THIS JOB
DEPENDS ON YOU

DEPARTMENT OF THE ARMY
JACKSONVILLE DISTRICT, CORPS OF ENGINEERS
JACKSONVILLE, FLORIDA

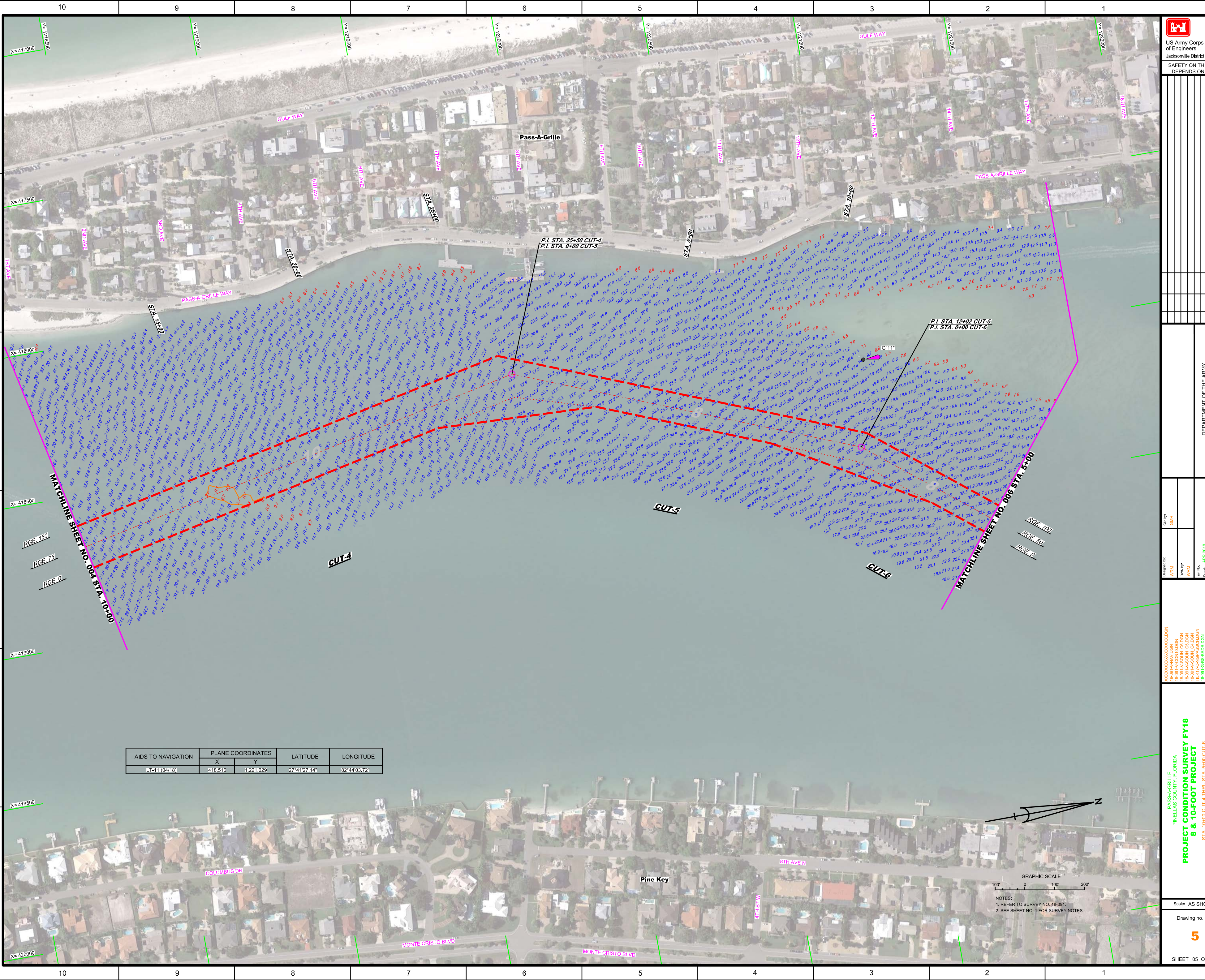
Designed by: WRM Drawn by: WRM Checked: APR 2018 Reference files: 18-081-14-000000.DGN, 18-081-14-000000.DGN, 18-081-14-000000.DGN, 18-081-14-000000.DGN, 18-081-14-000000.DGN, 18-081-14-000000.DGN	Date by: GHR Date: APR 2018
---	--------------------------------

PROJECT CONDITION SURVEY FY18
8 & 10-FOOT PROJECT
STA. 23+00 CUT-2 THRU STA. 10+00 CUT-4
PLAN


Scale: AS SHOWN

4

SHEET 04 OF 06



AIDS TO NAVIGATION	PLANE COORDINATES		LATITUDE	LONGITUDE
	X	Y		
LT-11 (0418)	418.516	1221.029	27°41'27.41"	82°44'03.72"



US Army Corps of Engineers
Jacksonville District

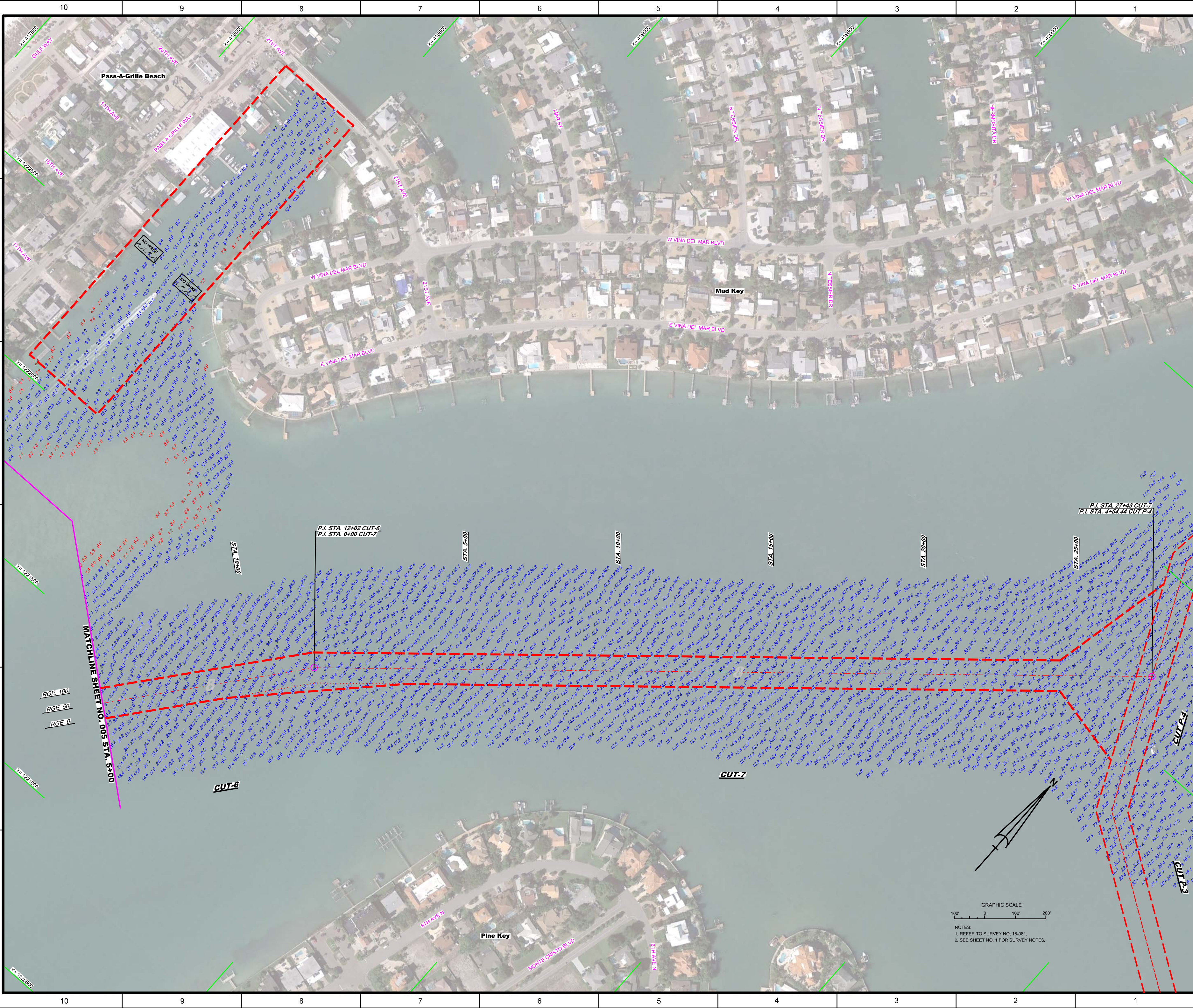
**SAFETY ON THIS JOB
DEPENDS ON YOU**

DEPARTMENT OF THE ARMY
JACKSONVILLE DISTRICT, CORPS OF ENGINEERS
JACKSONVILLE, FLORIDA

Drawn by: GHR
Checked by: GHR
Designed by: WRM
Reviewed by: WRM
Scale: AS SHOWN

Project: PASS-A-GRILLE PINELAS COUNTY, FLORIDA
PROJECT CONDITION SURVEY FY18
8 & 10-FOOT PROJECT
STA. 10+00 CUT-4 THRU STA. 5+00 CUT-6
PLAN

SHEET 05 OF 06



<p>US Army Corps of Engineers Jacksonville District</p>	
<p>SAFETY ON THIS JOB DEPENDS ON YOU</p>	
<p>DEPARTMENT OF THE ARMY JACKSONVILLE DISTRICT, CORPS OF ENGINEERS JACKSONVILLE, FLORIDA</p>	
<p>Drawn by: GHR</p>	<p>Checked by: GHR</p>
<p>Designed by: WRM</p>	<p>Reviewed by: WRM</p>
<p>Project No: 18-081</p>	<p>Date: APR 2018</p>
<p>PROJECT CONDITION SURVEY FY18 8 & 10-FOOT PROJECT STA. 5+00 CUT-6 THRU STA. 27+43 CUT-7 PLAN</p>	
<p>Scale: AS SHOWN</p>	
<p>Drawing no. 6</p>	
<p>SHEET 06 OF 06</p>	