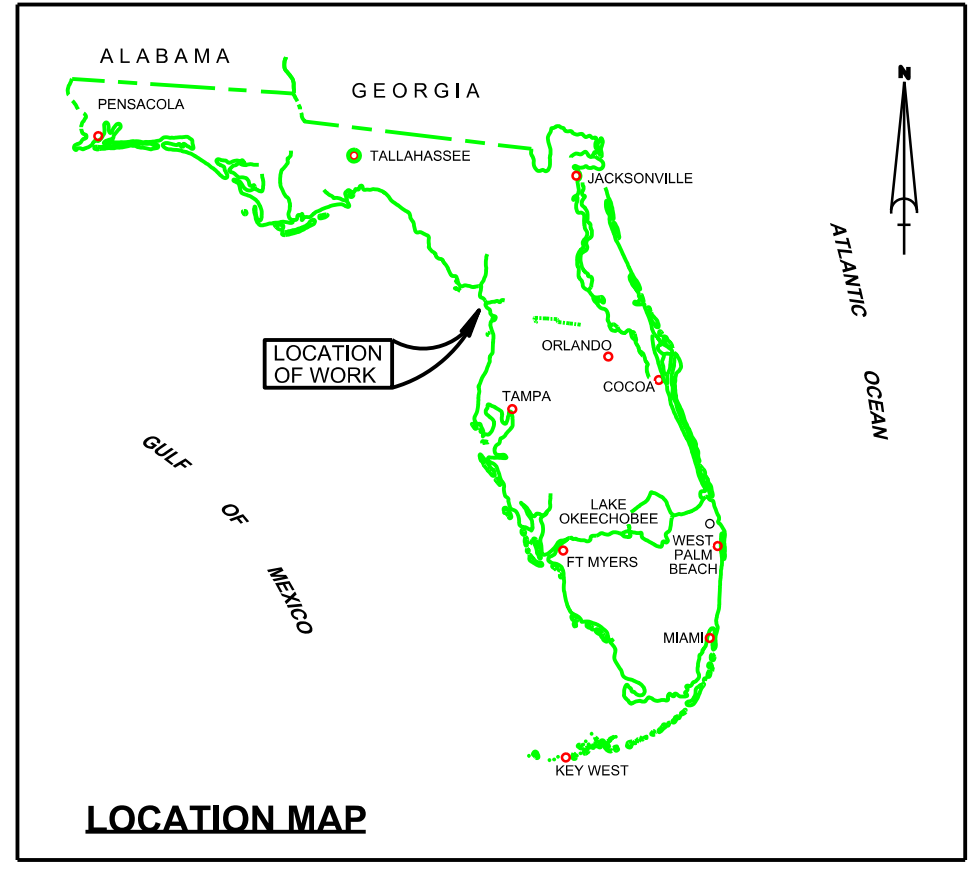


MAP SHEET INDEX



LOCATION MAP

WITHLACOOCHEE RIVER CITRUS / LEVY COUNTIES, FLORIDA HYDROGRAPHIC EXAM SURVEY FY18 10-FOOT PROJECT

SURVEY NOTES

- REFER TO SURVEY NO. 19-086.
 - SOUNDINGS ARE IN FEET AND TENTHS AND REFER TO NOAA'S REPORTED MEAN LOWER LOW WATER (MLLW) OF THE 1983-2001 TIDAL EPOCH.
 - TIDAL REDUCTIONS WERE OBTAINED UTILIZING A REAL-TIME KINEMATIC (RTK) GPS AND REFERENCED TO MLLW UTILIZING A HYPACK KINEMATIC TIDE DATUM (KTD) MODEL. KTD FILE NAME IS: "SPC-FL-WEST-2010-12-07.KTD".
 - ALL ELEVATIONS ARE BELOW THE CHART DATUM UNLESS PRECEDED BY A (+) SIGN.
 - PLANE COORDINATES ARE BASED ON THE TRANSVERSE MERCATOR PROJECTION FOR THE WEST ZONE OF FLORIDA AND REFERENCED TO NORTH AMERICAN DATUM OF 1983 (NAD83).
 - ALL STATIONING REFERS TO THE CENTERLINE OF THE CHANNEL.
 - THIS SURVEY WAS PERFORMED USING REAL-TIME KINEMATIC (RTK) GPS POSITIONING WITH THE FOLLOWING REFERENCE BASE LOCATIONS:
REFERENCE BASE LOCATED AT "872 7395 C TIDAL" (PID: AR1660)
 - DEPTHS DEPICTED BY THIS SURVEY ARE REFERENCED TO MLLW. TIDAL EPOCH 1983-2001 AS REPORTED BY THE NATIONAL OCEANIC AND ATMOSPHERIC ADMINISTRATION (NOAA). A MODIFIED VERSION OF NOAA'S VDATUM MODEL WAS USED TO CALIBRATE TO THE PUBLISHED MLLW HEIGHTS OF THE BENCHMARKS BELOW.
NOAA TIDAL STATION 872-7395 FOR ENTIRE PROJECT (PID: AR1662)
VERTICAL MEASUREMENTS WERE MADE USING A ROSS 835 SMART SOUNDER DUAL-FREQUENCY 28/200 KHZ SINGLE-BEAM TRANSDUCER. ALL SOUNDINGS SHOWN ARE IN HIGH FREQUENCY.
- | VESSEL | DATE OF SURVEY | CUT |
|--------|----------------|---------------------|
| SB-50 | 22-25 FEB 2018 | WITHLACOOCHEE RIVER |
- AIDS TO NAVIGATION WERE LOCATED DURING THIS SURVEY.
 - THE INFORMATION DEPICTED ON THIS MAP REPRESENTS THE RESULTS OF SURVEYS MADE ON THE DATES INDICATED ABOVE AND CAN ONLY BE CONSIDERED AS INDICATING THE GENERAL CONDITIONS AT THAT TIME. THIS CHART IS SOLELY FOR THE DISTRIBUTION OF AVAILABLE DEPTHS AT THE TIME OF THE SURVEY.
 - SURVEY ACCURACY PERFORMANCE STANDARDS, QUALITY CONTROL, AND QUALITY ASSURANCE REQUIREMENTS WERE FOLLOWED DURING THIS SURVEY IN ACCORDANCE WITH USACE EM 1110-2-1003, HYDROGRAPHIC SURVEYING, 31 DEC 13.

LEGEND	
	MONUMENT
	LIGHTED BUOY
	GREEN DAY BEACON
	RED DAY BEACON
	RED LIGHTED BUOY
	GREEN LIGHTED BUOY
	CAN BUOY
	NUN BUOY
	TIDE STAFF
	PROJECT DEPTH

US Army Corps of Engineers
Jacksonville District
SAFETY ON THIS JOB
DEPENDS ON YOU

Zone

Scale

Scale: AS SHOWN

Drawing no.

1

SHEET 01 OF 11

DEPARTMENT OF THE ARMY
JACKSONVILLE DISTRICT, CORPS OF ENGINEERS
JACKSONVILLE, FLORIDA

Check by: GHR

Designed by: WRM

Drawn by: WRM

File No: WRM

Date: FEB 2018

Reference files: 18-086-10-01.DGN

File name: 18-086-10-01.DGN

WITHLACOOCHEE RIVER
CITRUS / LEVY COUNTIES, FLORIDA
**HYDROGRAPHIC EXAM SURVEY FY18
10-FOOT PROJECT**
INDEX, LOCATION AND VICINITY
MAP

Zone

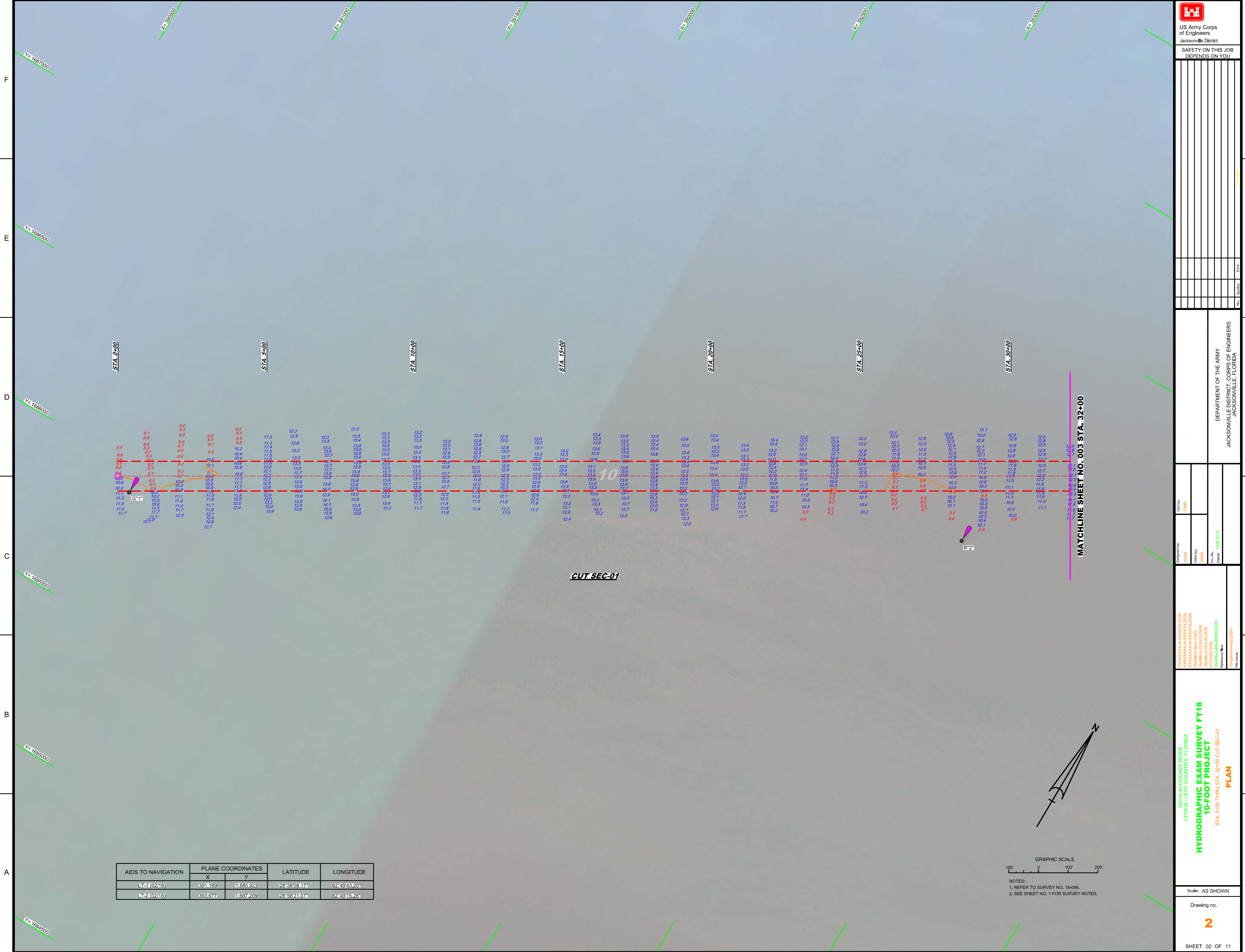
Scale

Scale: AS SHOWN

Drawing no.

1

SHEET 01 OF 11



STA. 0+00

STA. 5+00

STA. 10+00

STA. 15+00

STA. 20+00

STA. 25+00

STA. 30+00

MATCHLINE SHEET NO. 003 STA. 32+00

CUT SEC-01

AIDS TO NAVIGATION	PLANE COORDINATES		LATITUDE	LONGITUDE
	X	Y		
LT1 (0218)	391.189	1,685,923	28°58'08.17"	82°49'43.20"
LT2 (0218)	393.677	1,687,209	28°58'21.07"	82°49'15.28"

GRAPHIC SCALE



NOTES:
 1. REFER TO SURVEY NO. 18-086.
 2. SEE SHEET NO. 1 FOR SURVEY NOTES.



Jacksonville District

SAFETY ON THIS JOB
DEPENDS ON YOU

REV.	DATE	BY	CHKD.	DESCRIPTION

DEPARTMENT OF THE ARMY
 JACKSONVILLE DISTRICT, CORPS OF ENGINEERS
 JACKSONVILLE, FLORIDA

Checked By: GHR
 Designated By: WRM
 Design: FEB 2018

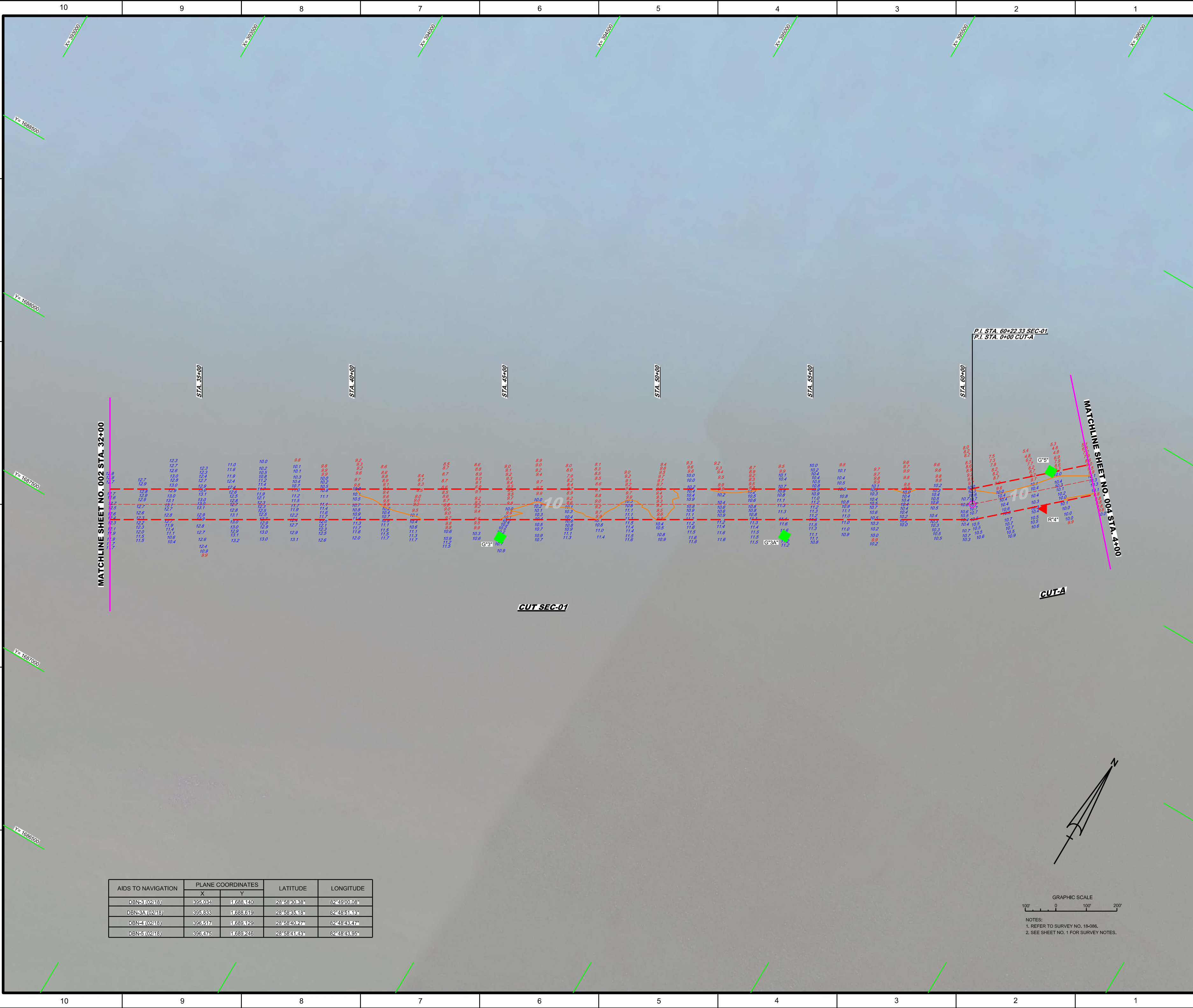
XXXXXXXXXXXXXXXXXXXX
 XXXXXXXXXXXXXXXXXXXX
 XXXXXXXXXXXXXXXXXXXX
 XXXXXXXXXXXXXXXXXXXX
 XXXXXXXXXXXXXXXXXXXX
 XXXXXXXXXXXXXXXXXXXX
 XXXXXXXXXXXXXXXXXXXX
 XXXXXXXXXXXXXXXXXXXX
 XXXXXXXXXXXXXXXXXXXX
 XXXXXXXXXXXXXXXXXXXX

WITH LACOCHEE RIVER
 CITRUS / LEVY COUNTIES, FLORIDA
HYDROGRAPHIC EXAM SURVEY FY18
10-FOOT PROJECT
 STA. 0+00 THRU STA. 32+00 CUT SEC-01
PLAN

Scale: AS SHOWN

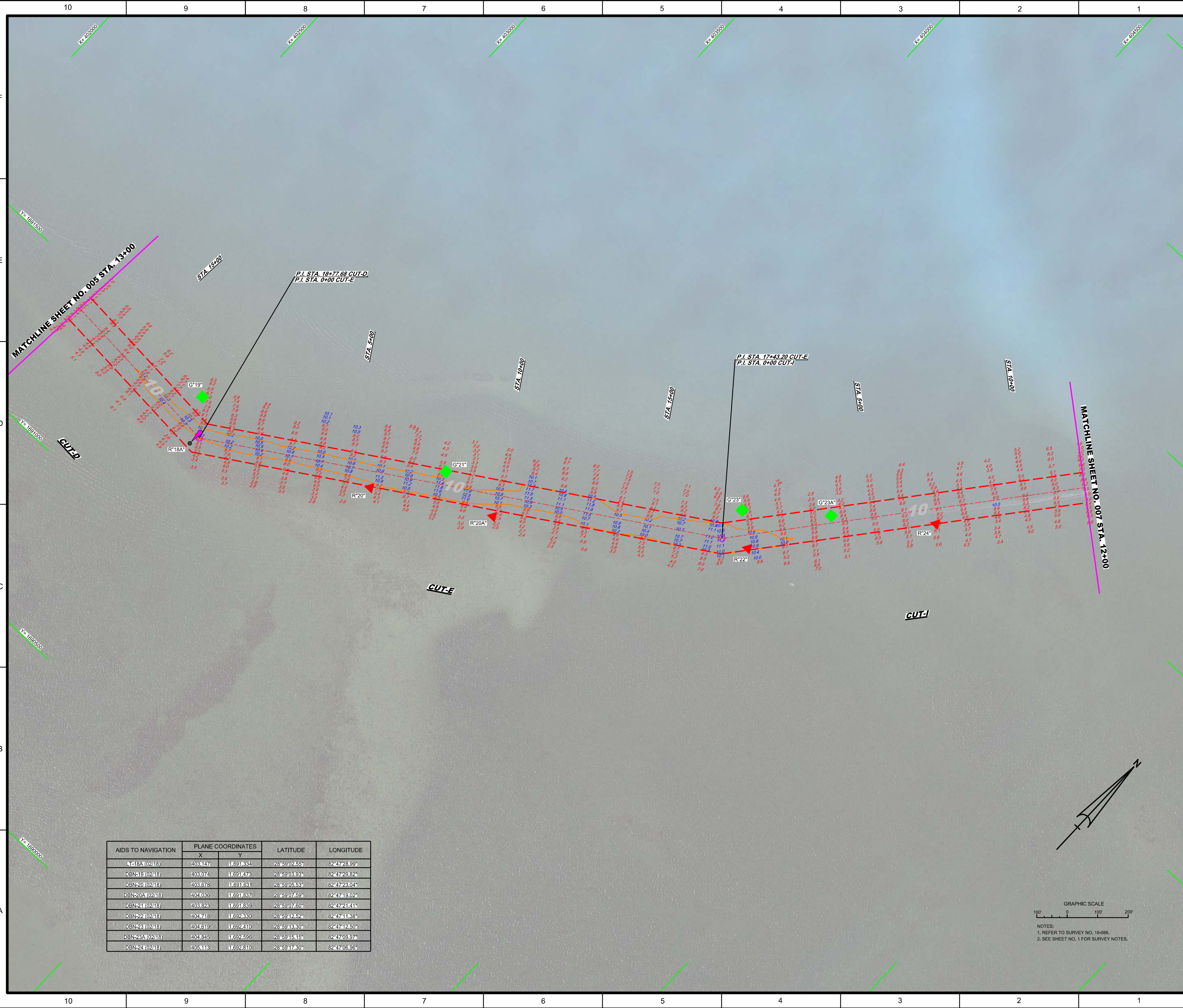
Drawing no.

2



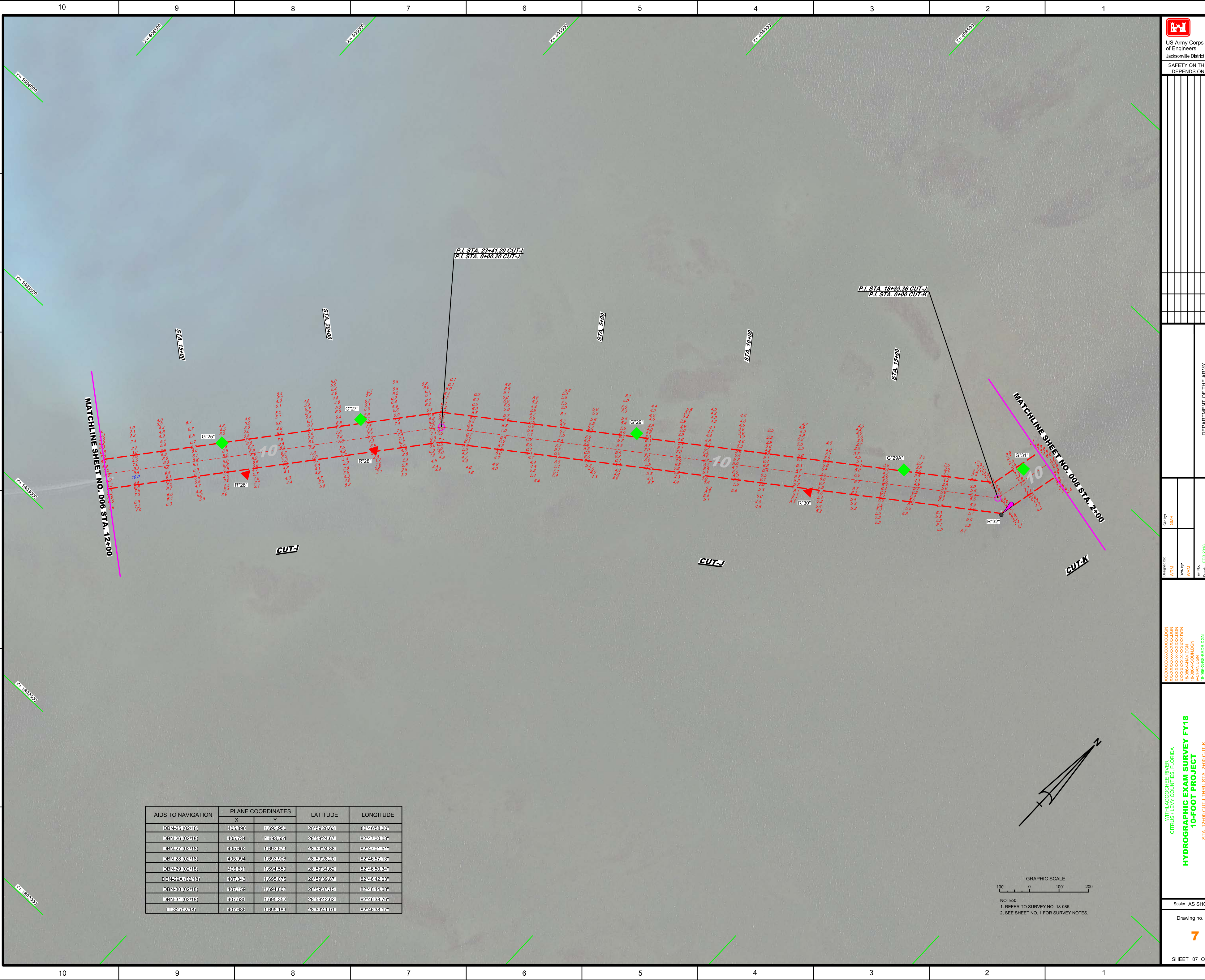
AIDS TO NAVIGATION	PLANE COORDINATES		LATITUDE	LONGITUDE
	X	Y		
DBN-3 (02/18)	395.034	1.688.140	28°58'30.38"	82°49'00.06"
DBN-3A (02/18)	395.633	1.688.619	28°58'35.18"	82°48'51.13"
DBN-4 (02/18)	395.517	1.689.129	28°58'40.27"	82°48'43.17"
DBN-5 (02/18)	396.475	1.689.246	28°58'41.43"	82°48'43.95"

GRAPHIC SCALE
100' 0 100' 200'
NOTES:
1. REFER TO SURVEY NO. 18-086.
2. SEE SHEET NO. 1 FOR SURVEY NOTES.



AIDS TO NAVIGATION	PLANE COORDINATES		LATITUDE	LONGITUDE
	X	Y		
18A (0218)	403.147	11691.834	28°59'02.85"	82°47'28.99"
DBN-19 (0218)	403.074	11691.478	28°59'03.83"	82°47'28.82"
DBN-20 (0218)	403.676	11691.631	28°59'05.53"	82°47'23.04"
DBN-20A (0218)	404.036	11691.837	28°59'07.59"	82°47'19.02"
DBN-21 (0218)	403.823	11691.839	28°59'07.60"	82°47'21.41"
DBN-22 (0218)	404.718	11692.830	28°59'12.52"	82°47'11.38"
DBN-23 (0218)	404.619	11692.410	28°59'13.30"	82°47'12.50"
DBN-23A (0218)	404.845	11692.596	28°59'15.15"	82°47'09.97"
DBN-24 (0218)	405.116	11692.810	28°59'17.30"	82°47'08.96"

GRAPHIC SCALE
 100' 0 100' 200'
 NOTES:
 1. REFER TO SURVEY NO. 18-086.
 2. SEE SHEET NO. 1 FOR SURVEY NOTES.



US Army Corps of Engineers
Jacksonville District

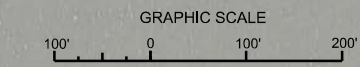
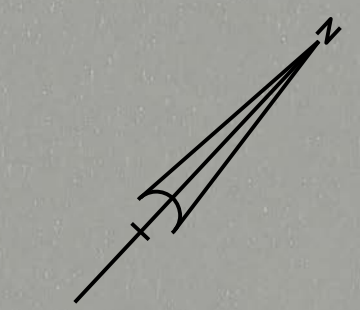
SAFETY ON THIS JOB
DEPENDS ON YOU

DEPARTMENT OF THE ARMY
JACKSONVILLE DISTRICT, CORPS OF ENGINEERS
JACKSONVILLE, FLORIDA

MATCHLINE SHEET NO. 006 STA. 12+00

MATCHLINE SHEET NO. 008 STA. 2+00

AIDS TO NAVIGATION	PLANE COORDINATES		LATITUDE	LONGITUDE
	X	Y		
DBN-25 (0218)	405890	11698950	28°59'28.66"	82°46'58.30"
DBN-26 (0218)	405783	11698551	28°59'24.67"	82°47°00.09"
DBN-27 (0218)	405602	11698573	28°59'24.88"	82°47°01.51"
DBN-28 (0218)	405994	11698905	28°59'28.20"	82°46°57.18"
DBN-29 (0218)	406601	11698550	28°59'34.62"	82°46°50.34"
DBN-29A (0218)	407343	11695075	28°59'39.87"	82°46°42.06"
DBN-30 (0218)	407459	11694602	28°59'37.15"	82°46°44.08"
DBN-31 (0218)	407635	11695352	28°59'42.62"	82°46°38.76"
DBN-32 (0218)	407686	11695189	28°59'41.01"	82°46°38.17"

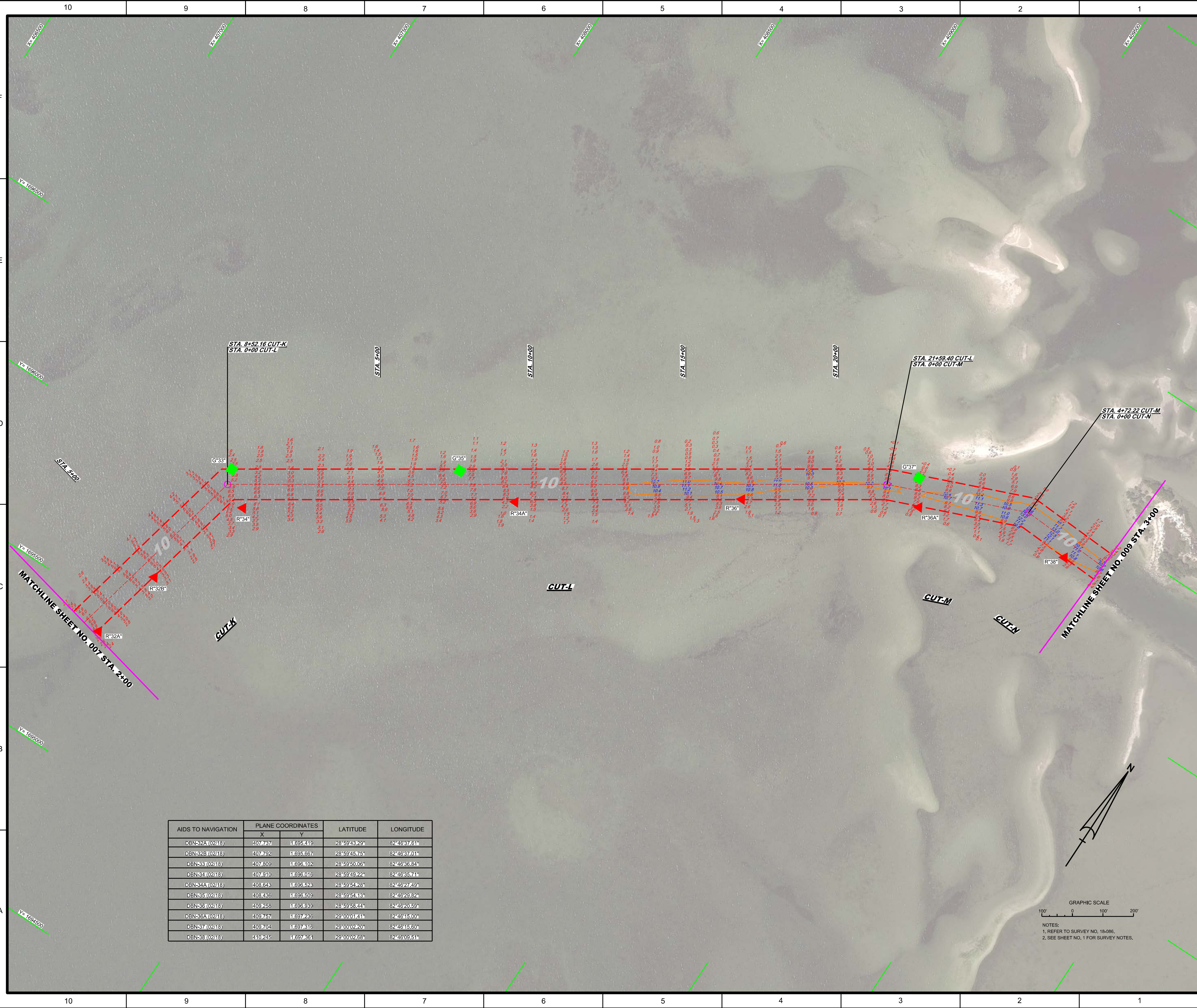


NOTES:
1. REFER TO SURVEY NO. 18-286.
2. SEE SHEET NO. 1 FOR SURVEY NOTES.

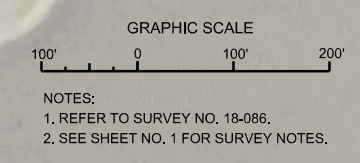
XXXXXXXXXXXXXXXXXXXX.DGN
XXXXXXXXXXXXXXXXXXXX.DGN
XXXXXXXXXXXXXXXXXXXX.DGN
XXXXXXXXXXXXXXXXXXXX.DGN
XXXXXXXXXXXXXXXXXXXX.DGN
XXXXXXXXXXXXXXXXXXXX.DGN
XXXXXXXXXXXXXXXXXXXX.DGN
XXXXXXXXXXXXXXXXXXXX.DGN
XXXXXXXXXXXXXXXXXXXX.DGN
XXXXXXXXXXXXXXXXXXXX.DGN
XXXXXXXXXXXXXXXXXXXX.DGN


WITHLACOCHEE RIVER
CITRUS / LEVY COUNTIES, FLORIDA
HYDROGRAPHIC EXAM SURVEY FY18
10-FOOT PROJECT
STA. 12+00 CUT-I THRU STA. 2+00 CUT-K
PLAN

Scale: AS SHOWN
Drawing no.
7
SHEET 07 OF 11



AIDS TO NAVIGATION	PLANE COORDINATES		LATITUDE	LONGITUDE
	X	Y		
DBN-32A (0218)	407737	11695419	28°59'43.28"	82°49'37.61"
DBN-32B (0218)	407792	11695667	28°59'45.75"	82°49'37.01"
DBN-33 (0218)	407809	11695102	28°59'50.05"	82°49'38.84"
DBN-34 (0218)	407810	11695016	28°59'49.22"	82°49'35.71"
DBN-34A (0218)	408643	11695526	28°59'54.28"	82°49'27.49"
DBN-35 (0218)	408436	11695509	28°59'54.18"	82°49'29.82"
DBN-36 (0218)	409258	11695939	28°59'58.44"	82°49'20.59"
DBN-36A (0218)	409757	11697236	29°00'01.51"	82°49'15.00"
DBN-37 (0218)	409704	11697316	29°00'02.20"	82°49'15.60"
DBN-38 (0218)	410245	11697361	29°00'02.63"	82°49'09.51"



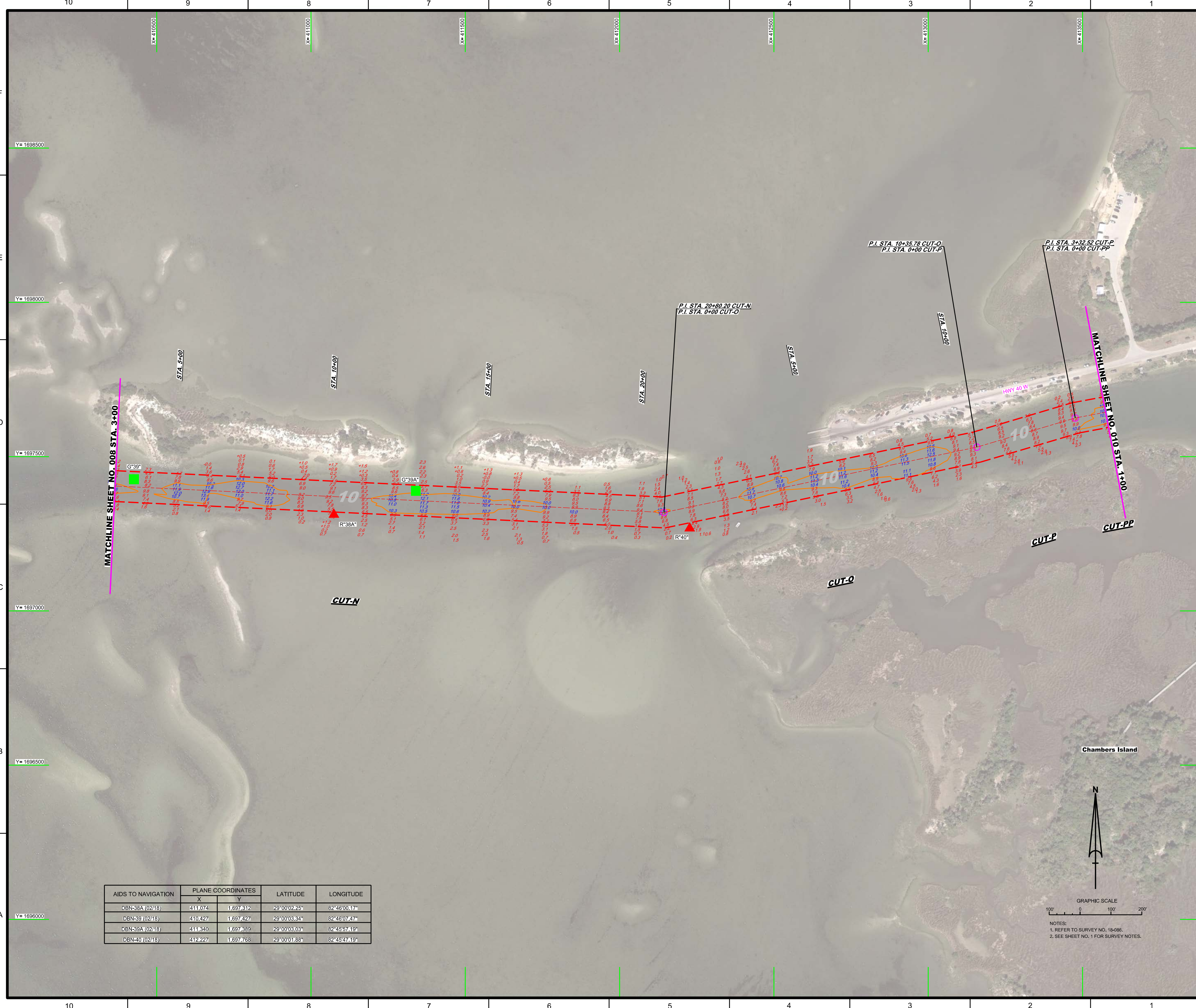

 US Army Corps of Engineers
 Jacksonville District
 SAFETY ON THIS JOB
 DEPENDS ON YOU

DEPARTMENT OF THE ARMY
 JACKSONVILLE DISTRICT, CORPS OF ENGINEERS
 JACKSONVILLE, FLORIDA

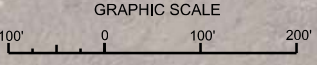
Checked by: GHR
 Designed by: WRM
 Drawn by: WRM
 File No.: 18-088-00010.DGN
 Date: FEB 2018

WITHALACOCHEE RIVER
 CITRUS / LEVY COUNTIES, FLORIDA
HYDROGRAPHIC EXAM SURVEY FY18
10-FOOT PROJECT
 STA. 3+00 CUT-M THRU STA. 1+00 CUT-PP
PLAN

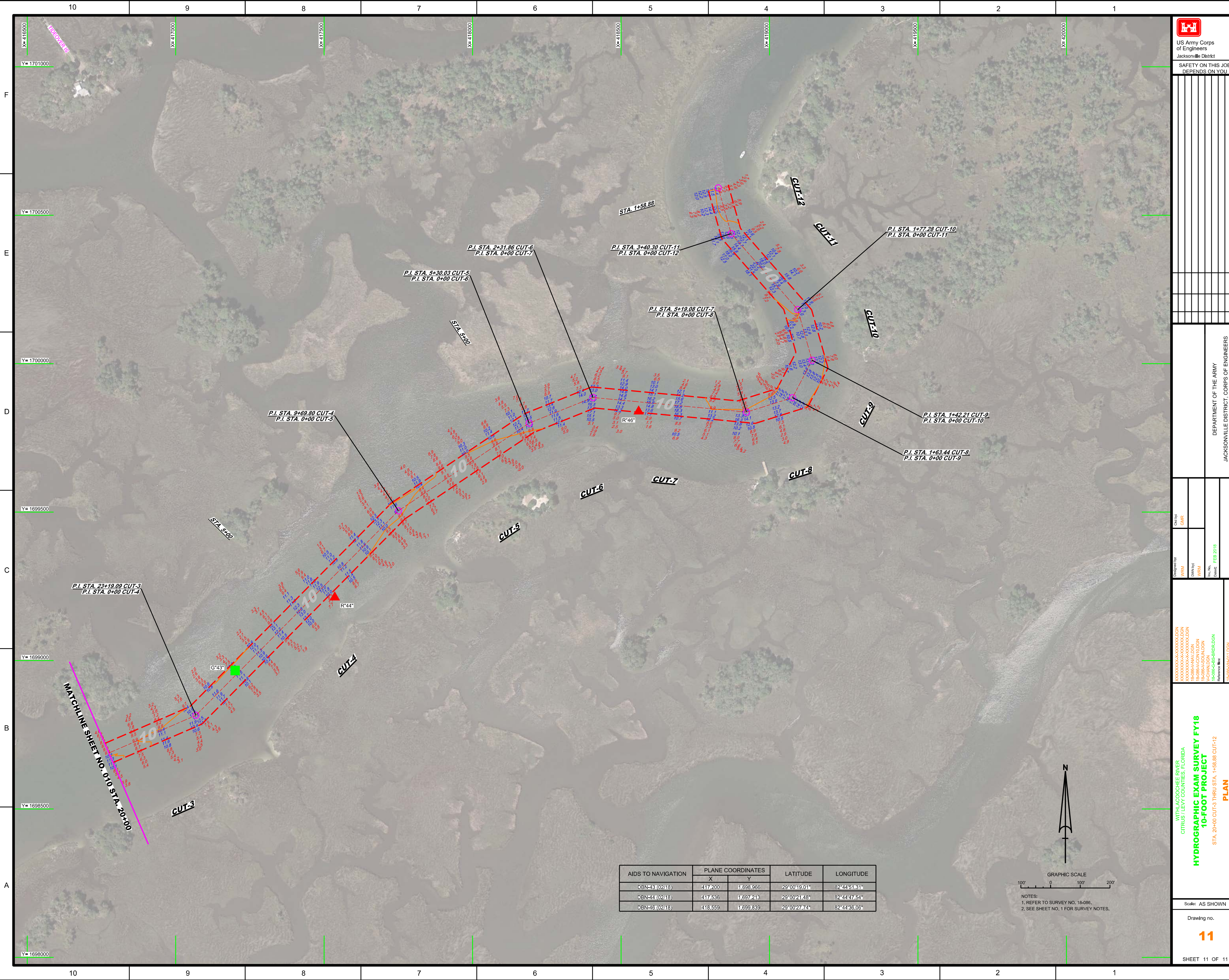
Scale: AS SHOWN
 Drawing no. **9**
 SHEET 09 OF 11




AIDS TO NAVIGATION	PLANE COORDINATES		LATITUDE	LONGITUDE
	X	Y		
DBN-38A (02/18)	411,074	1,697,312	29°00'02.25"	82°46'00.17"
DBN-39 (02/18)	410,427	1,697,427	29°00'03.34"	82°46'07.47"
DBN-39A (02/18)	411,340	1,697,389	29°00'03.03"	82°45'57.19"
DBN-40 (02/18)	412,227	1,697,768	29°00'01.88"	82°45'47.19"



NOTES:
 1. REFER TO SURVEY NO. 18-088.
 2. SEE SHEET NO. 1 FOR SURVEY NOTES.




 US Army Corps of Engineers
 Jacksonville District
 SAFETY ON THIS JOB
 DEPENDS ON YOU

DEPARTMENT OF THE ARMY
 JACKSONVILLE DISTRICT, CORPS OF ENGINEERS
 JACKSONVILLE, FLORIDA

Designed by: WRM
 Drawn by: WRM
 Checked: FEB 2018
 File name: 18-086-0101.DGN
 Reference files: 18-086-0101.DGN

WITHALACOCHEE RIVER
 CITRUS / LEVY COUNTIES, FLORIDA
HYDROGRAPHIC EXAM SURVEY FY18
10-FOOT PROJECT
 STA. 20+00 CUT-3 THRU STA. 1+58.88 CUT-12
PLAN

Scale: AS SHOWN
 Drawing no.
11
 SHEET 11 OF 11

AIDS TO NAVIGATION	PLANE COORDINATES		LATITUDE	LONGITUDE
	X	Y		
DBN-43 (0218)	417,200	1,698,966	29°00'19.01"	82°44'51.31"
DBN-44 (0218)	417,536	1,697,213	29°00'21.48"	82°44'47.54"
DBN-46 (0218)	418,559	1,699,839	29°00'27.74"	82°44'36.06"

