

PITHLACHOCOTEE RIVER PASCO COUNTY, FLORIDA HYDROGRAPHIC EXAM SURVEY FY18 6-FOOT PROJECT

SURVEY NOTES

1. REFER TO SURVEY NO. 18-083.
2. SOUNDINGS ARE IN FEET AND TENTHS AND REFER TO NOAA'S REPORTED MEAN LOWER LOW WATER (MLLW) OF THE 1983-2001 TIDAL EPOCH.
3. TIDAL REDUCTIONS WERE OBTAINED UTILIZING A REAL-TIME KINEMATIC (RTK) GPS AND REFERENCED TO MLLW UTILIZING A HYPACK KINEMATIC TIDE DATUM (KTD) MODEL. KTD FILE NAME IS: *SPC-FL-WEST-2010-12-07.KTD*.
4. ALL ELEVATIONS ARE BELOW THE CHART DATUM UNLESS PRECEDED BY A (+) SIGN.
5. PLANE COORDINATES ARE BASED ON THE TRANSVERSE MERCATOR PROJECTION FOR THE WEST ZONE OF FLORIDA AND REFERENCED TO NORTH AMERICAN DATUM OF 1983 (NAD83).
6. ALL STATIONING REFERS TO THE CENTERLINE OF THE CHANNEL.
7. THIS SURVEY WAS PERFORMED USING REAL-TIME KINEMATIC (RTK) GPS POSITIONING WITH THE FOLLOWING REFERENCE BASE LOCATION:
REFERENCE BASE LOCATED AT *872 7019 D TIDAL* (PID: DG5213)
8. DEPTHS DEPICTED BY THIS SURVEY ARE REFERENCED TO MLLW, TIDAL EPOCH 1983-2001 AS REPORTED BY THE NATIONAL OCEANIC AND ATMOSPHERIC ADMINISTRATION (NOAA). NOAA'S VDATUM MODEL WAS USED AND CALIBRATED TO THE PUBLISHED MLLW HEIGHTS OF THE BENCHMARKS BELOW:
NOAA TIDAL STATION 872-7012 USED FOR ALL CUTS. (PID: AL7433)
VERTICAL MEASUREMENTS WERE MADE USING A ROSS SMARTSOUNDER DUAL-FREQUENCY 28/200 KHZ SINGLE-BEAM TRANSUDCER. ALL SOUNDINGS SHOWN ARE IN HIGH FREQUENCY.

| VESSEL | DATE OF SURVEY | CUT |
|--------|----------------------|---------------------|
| SB-50 | 27 FEB - 02 MAR 2018 | 1-16, SW CENTERLINE |

9. AIDS TO NAVIGATION WERE LOCATED DURING THIS SURVEY.
10. THE INFORMATION DEPICTED ON THIS MAP REPRESENTS THE RESULTS OF SURVEYS MADE ON THE DATES INDICATED ABOVE AND CAN ONLY BE CONSIDERED AS INDICATING THE GENERAL CONDITIONS AT THAT TIME. THIS CHART IS SOLELY FOR THE DISTRIBUTION OF AVAILABLE DEPTHS AT THE TIME OF THE SURVEY AND IS NOT TO BE USED FOR NAVIGATION.
11. SURVEY ACCURACY PERFORMANCE STANDARDS, QUALITY CONTROL, AND QUALITY ASSURANCE REQUIREMENTS WERE FOLLOWED DURING THIS SURVEY IN ACCORDANCE WITH USACE EM 1110-2-1003, HYDROGRAPHIC SURVEYING, 30 NOV 13.

| LEGEND | |
|----------|--------------------|
| (Symbol) | GPS MONUMENT |
| (Symbol) | LIGHTED BEACON |
| (Symbol) | GREEN DAYBEACON |
| (Symbol) | RED DAYBEACON |
| (Symbol) | RED LIGHTED BUOY |
| (Symbol) | GREEN LIGHTED BUOY |
| (Symbol) | CAN BUOY |
| (Symbol) | NUN BUOY |
| (Symbol) | TIDE STAFF |
| 8 | PROJECT DEPTH |

US Army Corps
of Engineers
Jacksonville District

**SAFETY ON THIS JOB
DEPENDS ON YOU**

Designed By:
WRM

Drawn By:
WRM

Checked By:
WRM

Date: MAR 2018

XXXXXXXXXX-XXXXXXXXXX.DGN
XXXXXXXXXX-XXXXXXXXXX.DGN
XXXXXXXXXX-XXXXXXXXXX.DGN
XXXXXXXXXX-XXXXXXXXXX.DGN
XXXXXXXXXX-XXXXXXXXXX.DGN
XXXXXXXXXX-XXXXXXXXXX.DGN
XXXXXXXXXX-XXXXXXXXXX.DGN
XXXXXXXXXX-XXXXXXXXXX.DGN
XXXXXXXXXX-XXXXXXXXXX.DGN
XXXXXXXXXX-XXXXXXXXXX.DGN
XXXXXXXXXX-XXXXXXXXXX.DGN
XXXXXXXXXX-XXXXXXXXXX.DGN
XXXXXXXXXX-XXXXXXXXXX.DGN
XXXXXXXXXX-XXXXXXXXXX.DGN
XXXXXXXXXX-XXXXXXXXXX.DGN
XXXXXXXXXX-XXXXXXXXXX.DGN
XXXXXXXXXX-XXXXXXXXXX.DGN
XXXXXXXXXX-XXXXXXXXXX.DGN
XXXXXXXXXX-XXXXXXXXXX.DGN
XXXXXXXXXX-XXXXXXXXXX.DGN

DEPARTMENT OF THE ARMY
JACKSONVILLE DISTRICT, CORPS OF ENGINEERS
JACKSONVILLE, FLORIDA

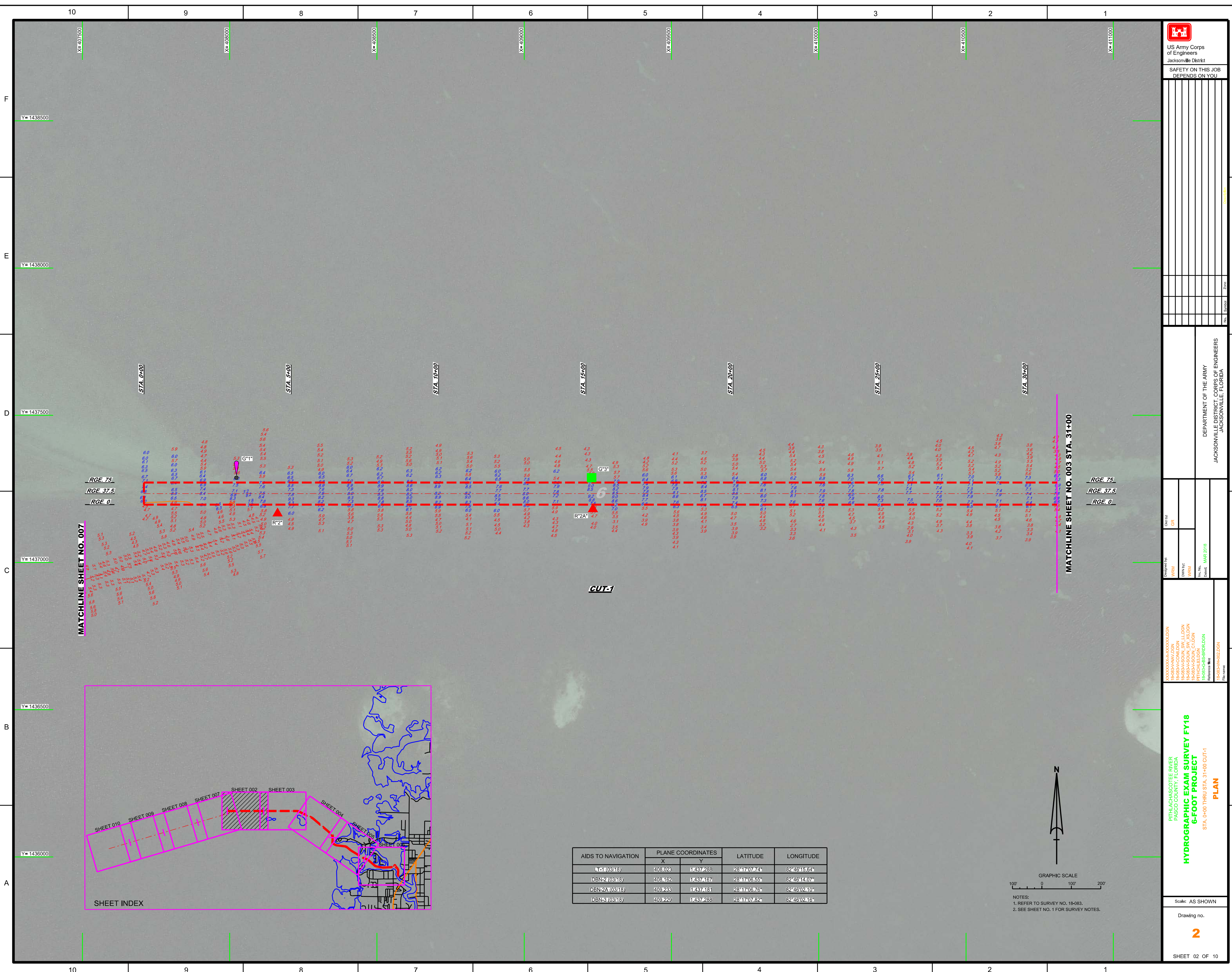
**HYDROGRAPHIC EXAM SURVEY FY18
6-FOOT PROJECT**

INDEX, LOCATION AND VICINITY
MAP

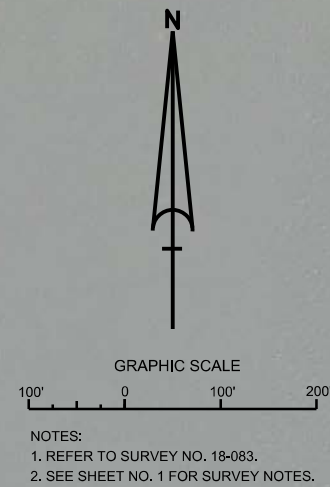
Scale: AS SHOWN

Drawing no.
1

SHEET 01 OF 10



| AIDS TO NAVIGATION | PLANE COORDINATES | | LATITUDE | LONGITUDE |
|--------------------|-------------------|----------|--------------|--------------|
| | X | Y | | |
| LA-1 (03/18) | 408.023 | 1437.288 | 28°17'07.74" | 82°46'15.64" |
| DBN-2 (03/18) | 408.162 | 1437.167 | 28°17'05.55" | 82°46'14.07" |
| DBN-2A (03/18) | 409.233 | 1437.181 | 28°17'06.76" | 82°46'02.10" |
| DBN-3 (03/18) | 409.229 | 1437.288 | 28°17'07.82" | 82°46'02.16" |



US Army Corps
 of Engineers
 Jacksonville District
 SAFETY ON THIS JOB
 DEPENDS ON YOU

| Proj. No. | Zone |
|-----------|------|
| | |

DEPARTMENT OF THE ARMY
 JACKSONVILLE DISTRICT, CORPS OF ENGINEERS
 JACKSONVILLE, FLORIDA

Drawn By: GRL
 Checked By: GRL
 Date: MAR 2018

\XXXXXXXXXXXXXXXXXX\DGN
 18083AHAN.DGN
 18083ASOUA_SW_LL.DGN
 18083ASOUA_SW_XS.DGN
 18083SOUA_LL.DGN
 18083S-BS-BA.DGN
 18083S-BS-BR.DGN
 18083S-BS-DR.DGN
 Reference files: 18083S-BS-DR.DGN
 File name:

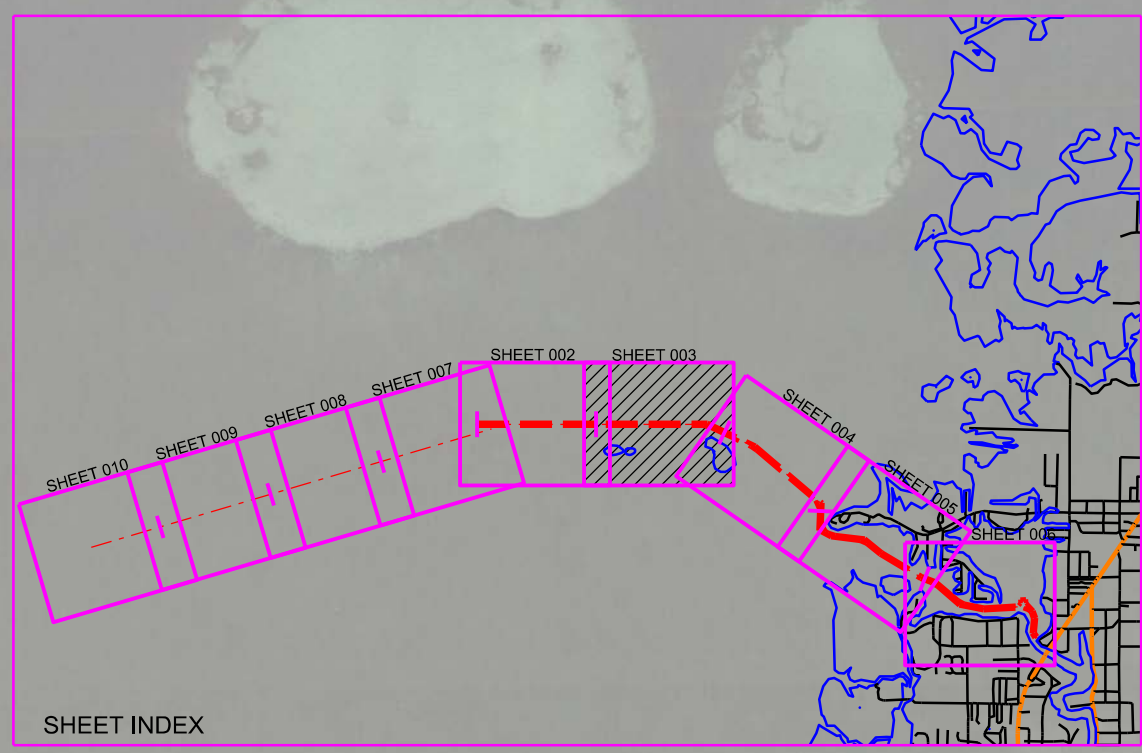
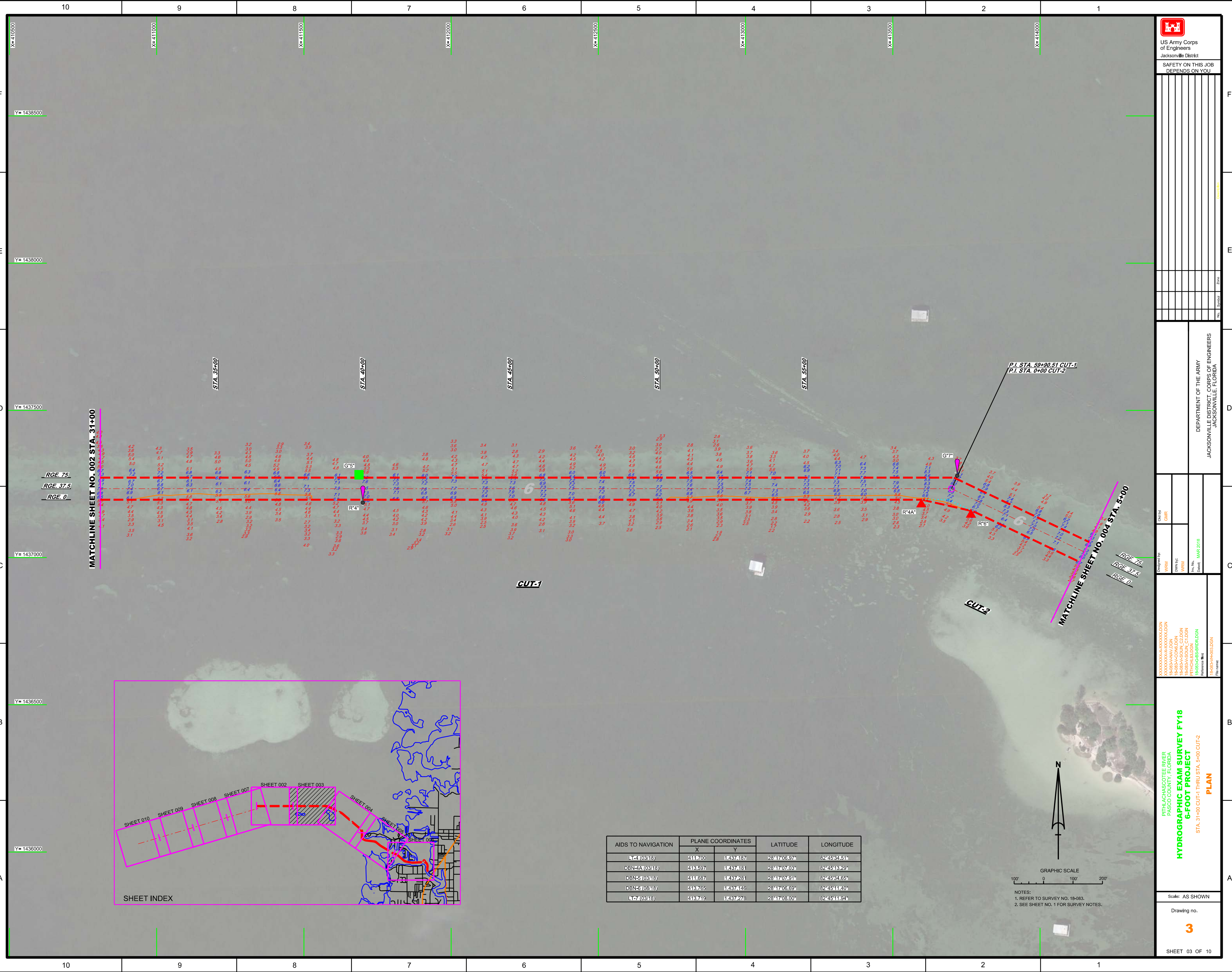
HYDROGRAPHIC EXAM SURVEY FY18
6-FOOT PROJECT
 STA. 0+00 THRU STA. 31+00 CUT-1
PLAN

Scale: AS SHOWN

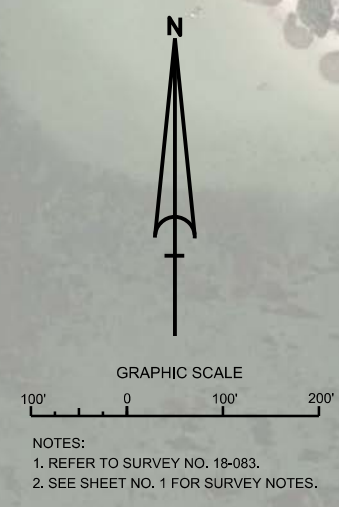
Drawing no.

2

SHEET 02 OF 10



| AIDS TO NAVIGATION | PLANE COORDINATES | | LATITUDE | LONGITUDE |
|--------------------|-------------------|---------|--------------|--------------|
| | X | Y | | |
| LA-1 (0318) | 411700 | 1437487 | 28°17'08.97" | 82°45'41.51" |
| DBN-1A (0318) | 418597 | 1437481 | 28°17'07.08" | 82°45'48.28" |
| DBN-5 (0318) | 411687 | 1437481 | 28°17'07.91" | 82°45'41.65" |
| DBN-5 (0318) | 418765 | 1437446 | 28°17'06.69" | 82°45'41.40" |
| LA-7 (0318) | 418749 | 1437476 | 28°17'08.00" | 82°45'41.94" |





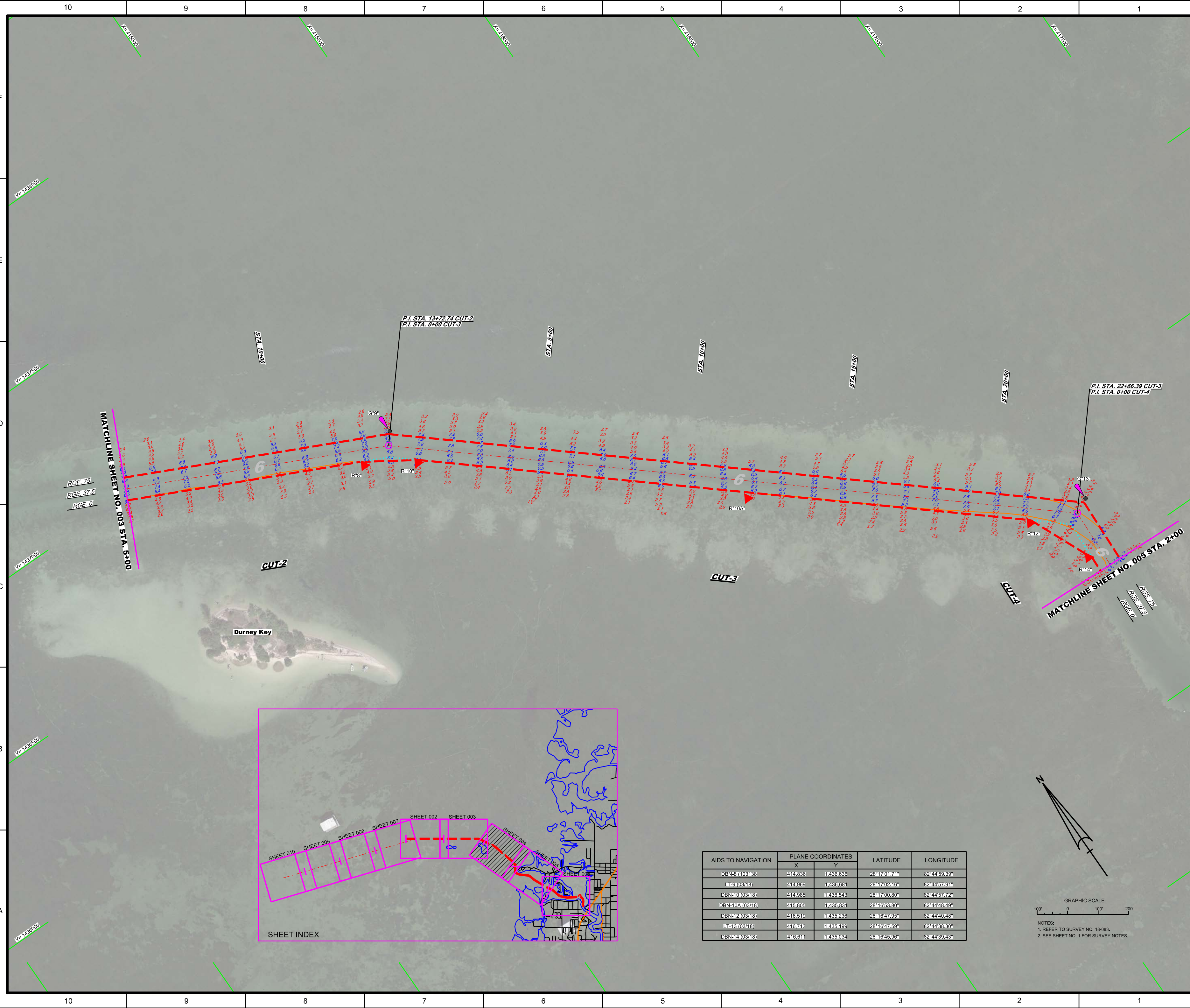
US Army Corps of Engineers
Jacksonville District
SAFETY ON THIS JOB
DEPENDS ON YOU

DEPARTMENT OF THE ARMY
JACKSONVILLE DISTRICT, CORPS OF ENGINEERS
JACKSONVILLE, FLORIDA

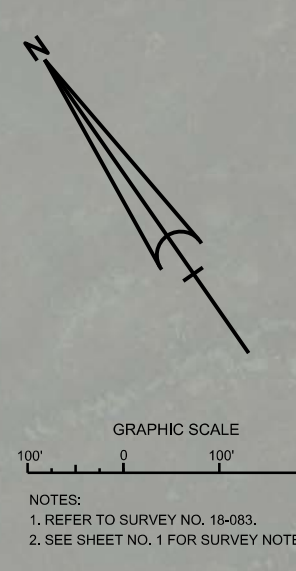
| | |
|--------------|----------|
| Designed by: | WRM |
| Checked by: | GHR |
| Drawn by: | WRM |
| Date: | MAR 2018 |

RTHACHASCOOTEE RIVER
PASCO COUNTY, FLORIDA
HYDROGRAPHIC EXAM SURVEY FY18
6-FOOT PROJECT
STA. 5+00 CUT-2 THRU STA. 2+00 CUT-4
PLAN

Scale: AS SHOWN
Drawing no.
4
SHEET 04 OF 10



| AIDS TO NAVIGATION | PLANE COORDINATES | | LATITUDE | LONGITUDE |
|--------------------|-------------------|----------|--------------|--------------|
| | X | Y | | |
| DBN-9 (10348) | 414.836 | 1435.636 | 28°17'01.74" | 82°44'59.89" |
| DBN-10 (0848) | 414.599 | 1435.631 | 28°17'02.61" | 82°44'57.91" |
| DBN-10A (0848) | 414.985 | 1435.548 | 28°17'00.80" | 82°44'57.72" |
| DBN-10A (0848) | 415.805 | 1435.831 | 28°16'53.80" | 82°44'48.49" |
| DBN-12 (0348) | 416.519 | 1435.266 | 28°16'47.95" | 82°44'40.45" |
| DBN-13 (0348) | 416.748 | 1435.199 | 28°16'47.59" | 82°44'38.30" |
| DBN-14 (0348) | 416.611 | 1435.034 | 28°16'45.96" | 82°44'39.43" |



| AIDS TO NAVIGATION | PLANE COORDINATES | | LATITUDE | LONGITUDE |
|--------------------|-------------------|----------|--------------|--------------|
| | X | Y | | |
| DBN-15 (03/18) | 416695 | 14341029 | 28°16'41.05" | 82°44'38.46" |
| DBN-16 (03/18) | 416690 | 14341458 | 28°16'40.24" | 82°44'39.63" |
| DBN-17 (03/18) | 416735 | 14341455 | 28°16'40.26" | 82°44'37.44" |
| DBN-18 (03/18) | 416920 | 14341279 | 28°16'38.51" | 82°44'35.93" |
| DBN-20 (03/18) | 417689 | 14341185 | 28°16'37.62" | 82°44'27.92" |
| DBN-21 (03/18) | 417818 | 14341272 | 28°16'38.49" | 82°44'25.94" |
| DBN-22 (03/18) | 417846 | 14341107 | 28°16'38.86" | 82°44'25.56" |
| DBN-23 (03/18) | 418254 | 14341504 | 28°16'34.87" | 82°44'20.97" |
| DBN-24 (03/18) | 418749 | 14341502 | 28°16'30.58" | 82°44'15.41" |

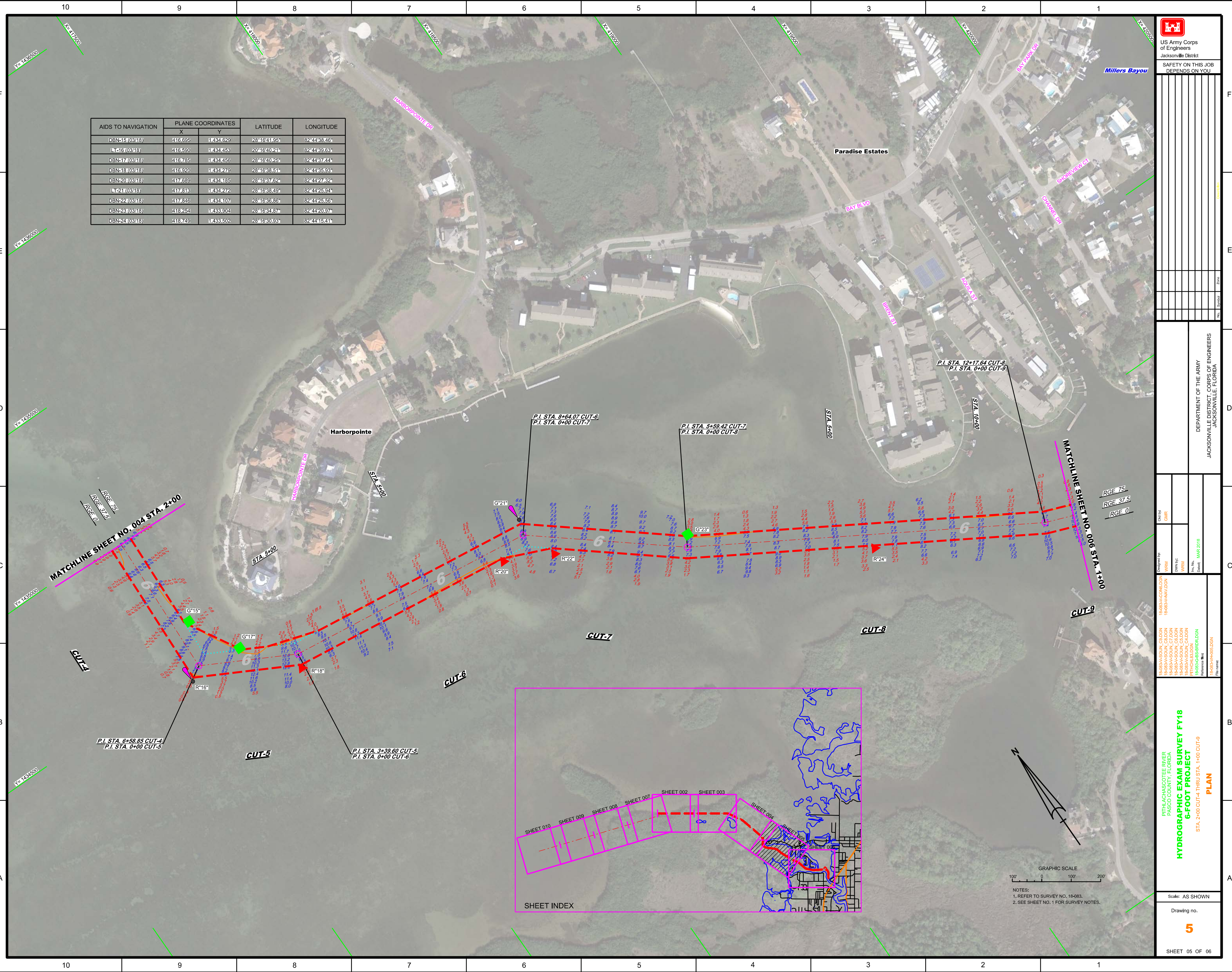
US Army Corps of Engineers
Jacksonville District
SAFETY ON THIS JOB
DEPENDS ON YOU

DEPARTMENT OF THE ARMY
JACKSONVILLE DISTRICT, CORPS OF ENGINEERS
JACKSONVILLE, FLORIDA

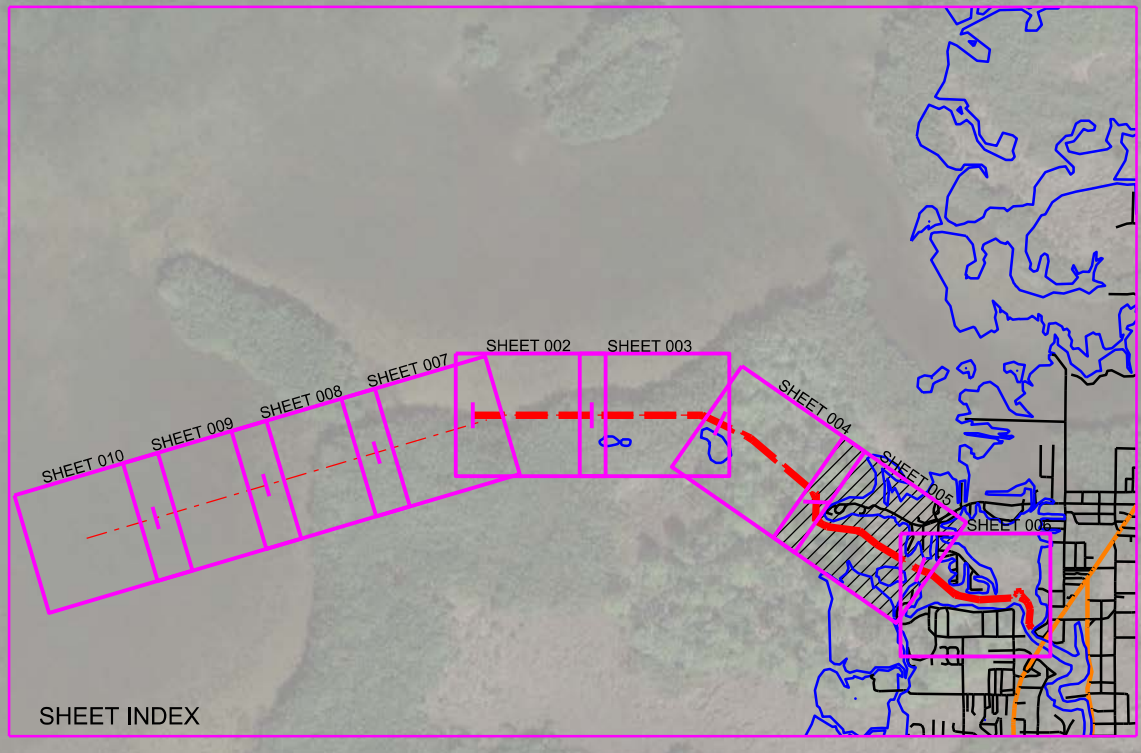
18-083-AV-006.DGN
18-083-AV-007.DGN
18-083-AV-008.DGN
18-083-AV-009.DGN
18-083-AV-010.DGN
18-083-AV-011.DGN
18-083-AV-012.DGN
18-083-AV-013.DGN
18-083-AV-014.DGN
18-083-AV-015.DGN
18-083-AV-016.DGN
18-083-AV-017.DGN
18-083-AV-018.DGN
18-083-AV-019.DGN
18-083-AV-020.DGN
18-083-AV-021.DGN
18-083-AV-022.DGN
18-083-AV-023.DGN
18-083-AV-024.DGN
18-083-AV-025.DGN
18-083-AV-026.DGN
18-083-AV-027.DGN
18-083-AV-028.DGN
18-083-AV-029.DGN
18-083-AV-030.DGN
18-083-AV-031.DGN
18-083-AV-032.DGN
18-083-AV-033.DGN
18-083-AV-034.DGN
18-083-AV-035.DGN
18-083-AV-036.DGN
18-083-AV-037.DGN
18-083-AV-038.DGN
18-083-AV-039.DGN
18-083-AV-040.DGN
18-083-AV-041.DGN
18-083-AV-042.DGN
18-083-AV-043.DGN
18-083-AV-044.DGN
18-083-AV-045.DGN
18-083-AV-046.DGN
18-083-AV-047.DGN
18-083-AV-048.DGN
18-083-AV-049.DGN
18-083-AV-050.DGN
18-083-AV-051.DGN
18-083-AV-052.DGN
18-083-AV-053.DGN
18-083-AV-054.DGN
18-083-AV-055.DGN
18-083-AV-056.DGN
18-083-AV-057.DGN
18-083-AV-058.DGN
18-083-AV-059.DGN
18-083-AV-060.DGN
18-083-AV-061.DGN
18-083-AV-062.DGN
18-083-AV-063.DGN
18-083-AV-064.DGN
18-083-AV-065.DGN
18-083-AV-066.DGN
18-083-AV-067.DGN
18-083-AV-068.DGN
18-083-AV-069.DGN
18-083-AV-070.DGN
18-083-AV-071.DGN
18-083-AV-072.DGN
18-083-AV-073.DGN
18-083-AV-074.DGN
18-083-AV-075.DGN
18-083-AV-076.DGN
18-083-AV-077.DGN
18-083-AV-078.DGN
18-083-AV-079.DGN
18-083-AV-080.DGN
18-083-AV-081.DGN
18-083-AV-082.DGN
18-083-AV-083.DGN
18-083-AV-084.DGN
18-083-AV-085.DGN
18-083-AV-086.DGN
18-083-AV-087.DGN
18-083-AV-088.DGN
18-083-AV-089.DGN
18-083-AV-090.DGN
18-083-AV-091.DGN
18-083-AV-092.DGN
18-083-AV-093.DGN
18-083-AV-094.DGN
18-083-AV-095.DGN
18-083-AV-096.DGN
18-083-AV-097.DGN
18-083-AV-098.DGN
18-083-AV-099.DGN
18-083-AV-100.DGN

Hydrographic Exam Survey FY18
6-FOOT PROJECT
STA. 2+00 CUT-4 THRU STA. 1+00 CUT-9
PLAN

Scale: AS SHOWN
Drawing no. 5
SHEET 05 OF 06



| AIDS TO NAVIGATION | PLANE COORDINATES | | LATITUDE | LONGITUDE |
|--------------------|-------------------|----------|--------------|--------------|
| | X | Y | | |
| DBN-15 (03/18) | 416695 | 14341029 | 28°16'41.05" | 82°44'38.46" |
| DBN-16 (03/18) | 416690 | 14341458 | 28°16'40.24" | 82°44'39.63" |
| DBN-17 (03/18) | 416735 | 14341455 | 28°16'40.26" | 82°44'37.44" |
| DBN-18 (03/18) | 416920 | 14341279 | 28°16'38.51" | 82°44'35.93" |
| DBN-20 (03/18) | 417689 | 14341185 | 28°16'37.62" | 82°44'27.92" |
| DBN-21 (03/18) | 417818 | 14341272 | 28°16'38.49" | 82°44'25.94" |
| DBN-22 (03/18) | 417846 | 14341107 | 28°16'38.86" | 82°44'25.56" |
| DBN-23 (03/18) | 418254 | 14341504 | 28°16'34.87" | 82°44'20.97" |
| DBN-24 (03/18) | 418749 | 14341502 | 28°16'30.58" | 82°44'15.41" |



SAFETY ON THIS JOB DEPENDS ON YOU

| | | | | | |
|--|--|--|--|--|--|
| | | | | | |
| | | | | | |
| | | | | | |
| | | | | | |
| | | | | | |

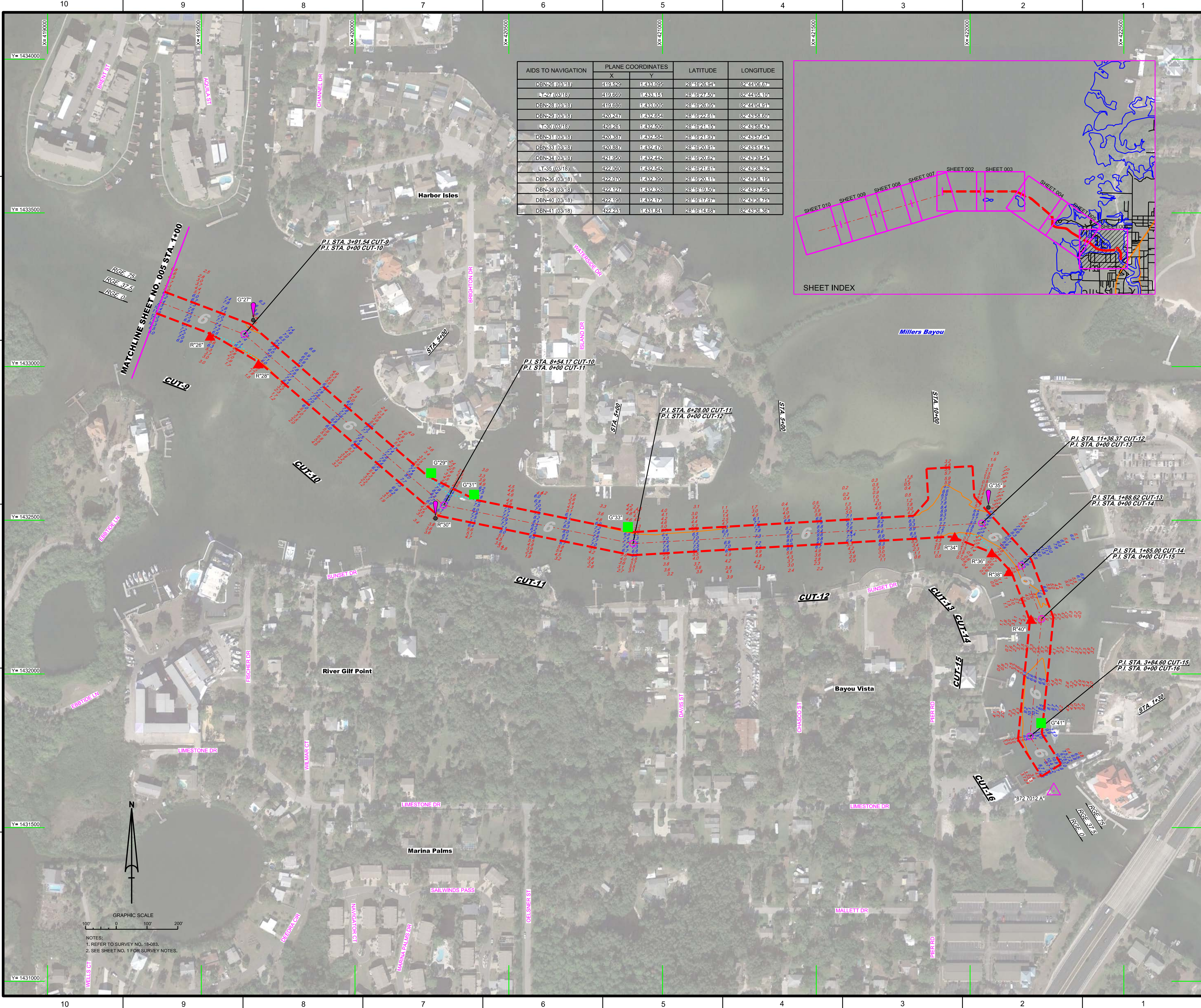
DEPARTMENT OF THE ARMY
JACKSONVILLE DISTRICT, CORPS OF ENGINEERS
JACKSONVILLE, FLORIDA

Checked By: GHR
Designed By: WRM
Drawn By: WRM
In Charge: WRM
Date: MAR 2018

HYDROGRAPHIC EXAM SURVEY FY18
6-FOOT PROJECT
STA. 1+00 CUT-9 THRU STA. 1+30 CUT-16
PLAN

Scale: AS SHOWN
Drawing no. 6
SHEET 06 OF 10

| AIDS TO NAVIGATION | PLANE COORDINATES | | LATITUDE | LONGITUDE |
|--------------------|-------------------|----------|--------------|--------------|
| | X | Y | | |
| DBN-26 (03/18) | 419.529 | 1433.095 | 28°16'26.94" | 82°44'06.67" |
| LT-27 (03/18) | 419.669 | 1433.151 | 28°16'27.50" | 82°44'05.10" |
| DBN-28 (03/18) | 419.686 | 1433.005 | 28°16'26.05" | 82°44'04.91" |
| DBN-29 (03/18) | 420.247 | 1432.654 | 28°16'22.61" | 82°43'58.69" |
| LT-30 (03/18) | 420.261 | 1432.505 | 28°16'21.15" | 82°43'58.43" |
| DBN-31 (03/18) | 420.387 | 1432.634 | 28°16'21.93" | 82°43'57.04" |
| DBN-33 (03/18) | 420.887 | 1432.776 | 28°16'20.91" | 82°43'51.23" |
| DBN-34 (03/18) | 421.950 | 1432.242 | 28°16'20.92" | 82°43'39.64" |
| LT-35 (03/18) | 422.050 | 1432.542 | 28°16'21.61" | 82°43'38.82" |
| DBN-36 (03/18) | 422.070 | 1432.390 | 28°16'20.11" | 82°43'38.19" |
| DBN-38 (03/18) | 422.127 | 1432.826 | 28°16'19.50" | 82°43'37.55" |
| DBN-40 (03/18) | 422.193 | 1432.776 | 28°16'17.97" | 82°43'36.75" |
| DBN-41 (03/18) | 422.231 | 1431.841 | 28°16'14.68" | 82°43'36.35" |



MATCHLINE SHEET NO. 005 STA. 1+00

RGE. 79
RGE. 74
RGE. 0

P.I. STA. 3+91.54 CUT-9
P.I. STA. 0+00 CUT-10

P.I. STA. 8+54.17 CUT-10
P.I. STA. 0+00 CUT-11

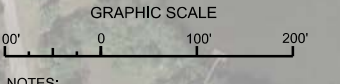
P.I. STA. 6+28.00 CUT-11
P.I. STA. 0+00 CUT-12

P.I. STA. 11+36.37 CUT-12
P.I. STA. 0+00 CUT-13

P.I. STA. 1+88.62 CUT-13
P.I. STA. 0+00 CUT-14

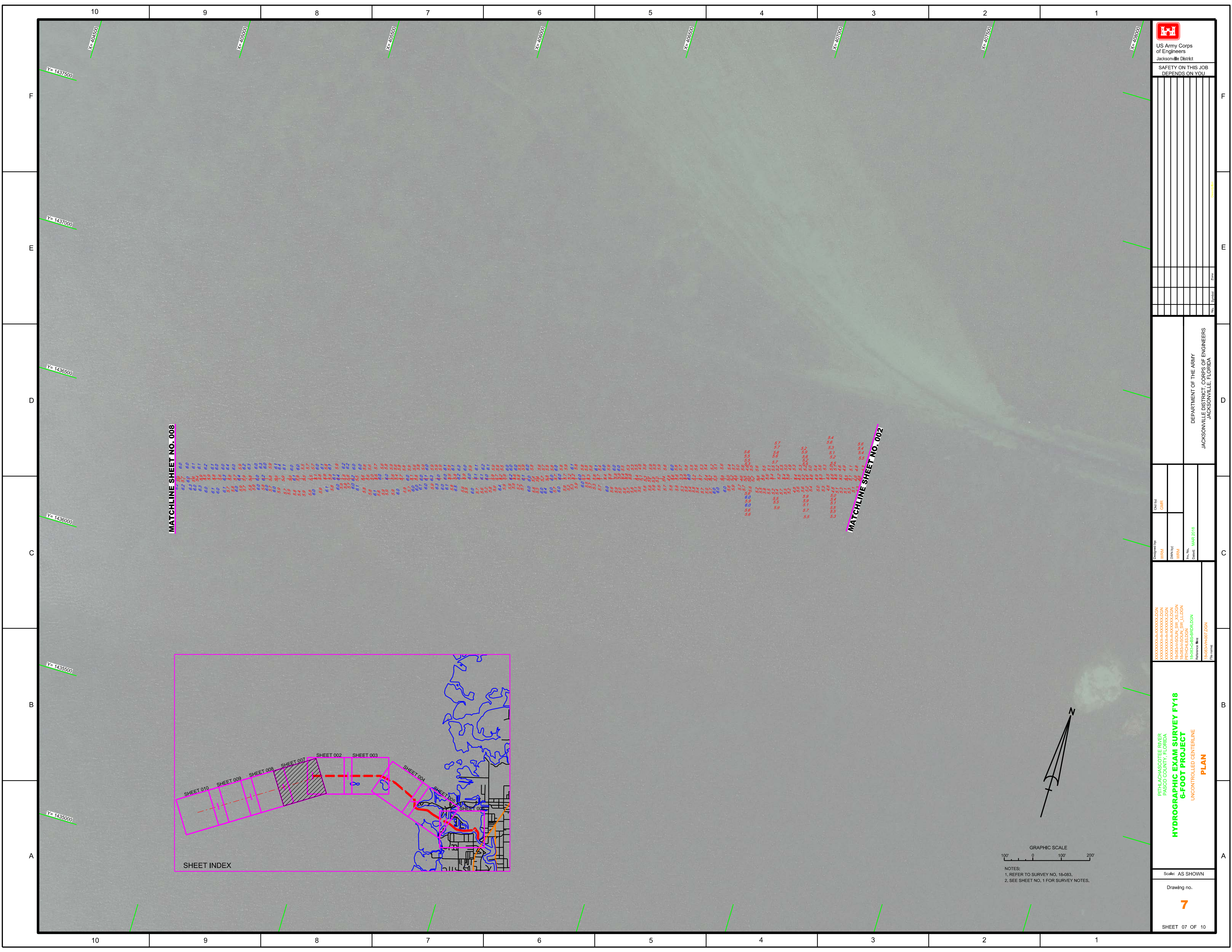
P.I. STA. 1+85.00 CUT-14
P.I. STA. 0+00 CUT-15

P.I. STA. 3+84.60 CUT-15
P.I. STA. 0+00 CUT-16



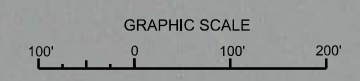
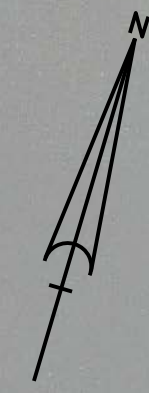
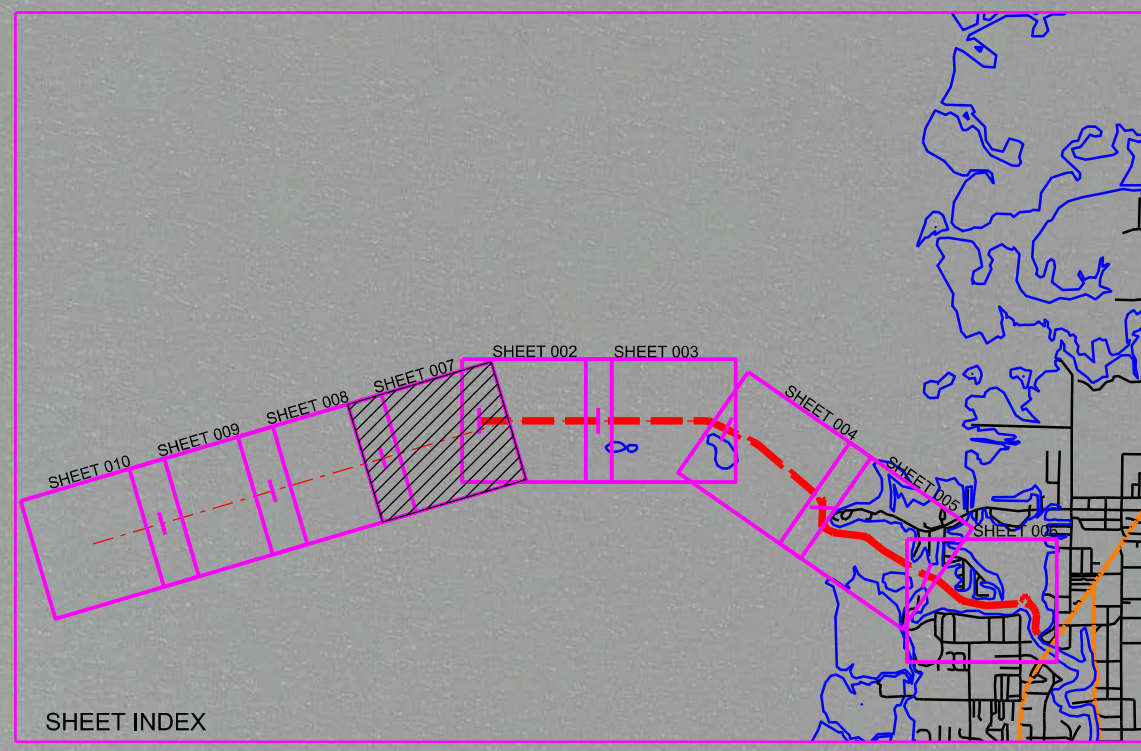
NOTES:
1. REFER TO SURVEY NO. 18-083.
2. SEE SHEET NO. 1 FOR SURVEY NOTES.





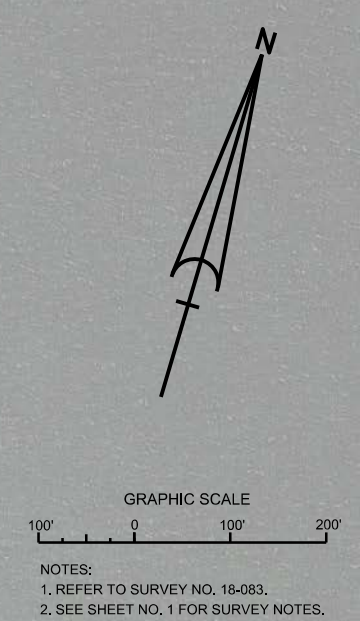
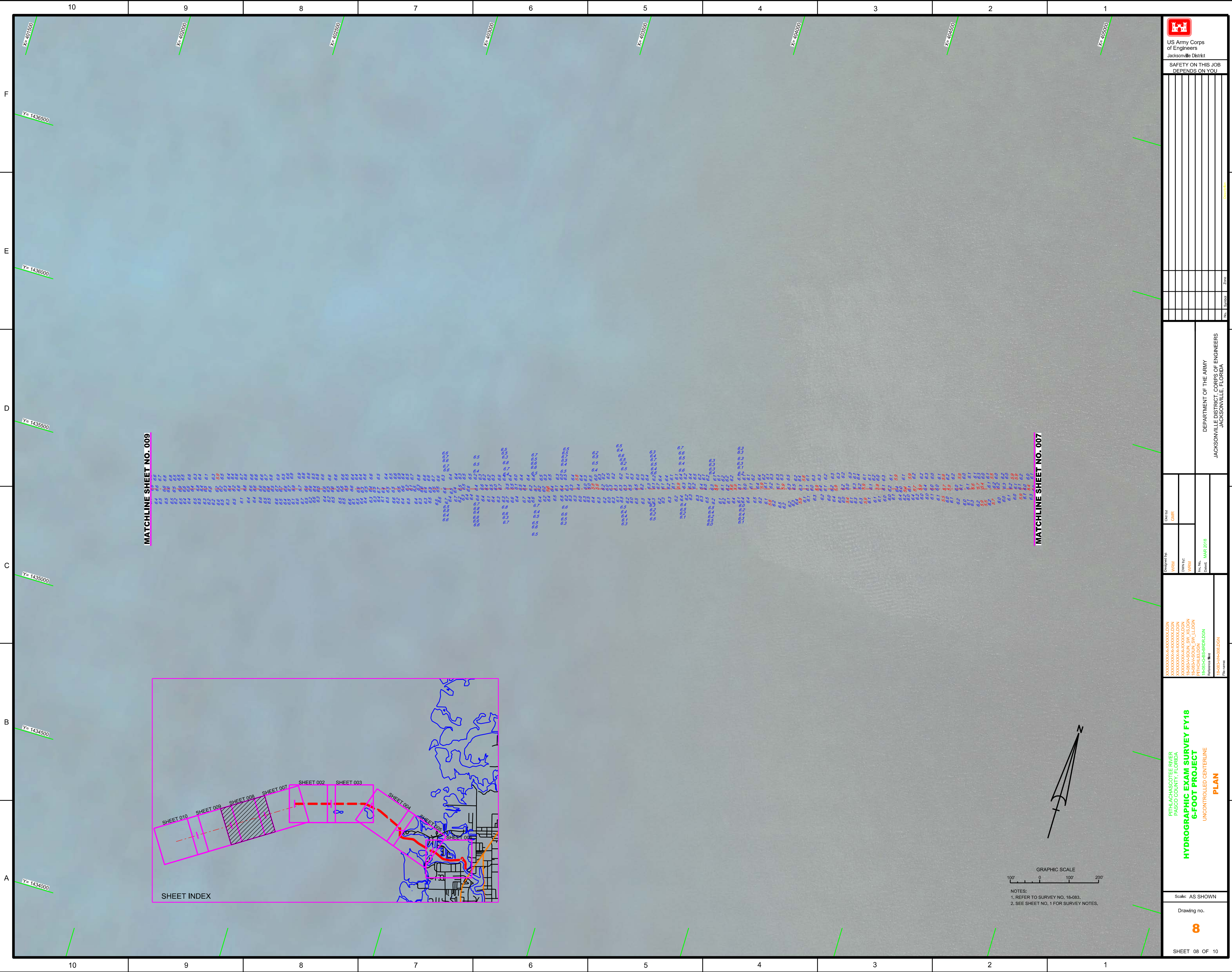
MATCHLINE SHEET NO. 008

MATCHLINE SHEET NO. 002



NOTES:
 1. REFER TO SURVEY NO. 18-083.
 2. SEE SHEET NO. 1 FOR SURVEY NOTES.

| | |
|--|--------------------|
| US Army Corps of Engineers Jacksonville District SAFETY ON THIS JOB DEPENDS ON YOU | |
| Drawn by: WRM | Checked by: GHR |
| Designated by: WRM | Date: MAR 2018 |
| File name: R:\18-083-01\18-083-01-007.DGN | |
| Project: RITLACHASCOTEE RIVER PASCO COUNTY, FLORIDA HYDROGRAPHIC EXAM SURVEY FY18 6-FOOT PROJECT UNCONTROLLED CENTERLINE PLAN | |
| Drawing no. 7 | |
| SHEET 07 OF 10 | |



NOTES:
 1. REFER TO SURVEY NO. 18-083.
 2. SEE SHEET NO. 1 FOR SURVEY NOTES.

| | |
|---|--------------------|
| US Army Corps of Engineers Jacksonville District SAFETY ON THIS JOB DEPENDS ON YOU | |
| Drawn by: WRM | Checked by: GHR |
| Designated by: WRM | Date: MAR 2018 |
| Project Name: RTHLACHASCOTEE RIVER PASCO COUNTY, FLORIDA HYDROGRAPHIC EXAM SURVEY FY18 6-FOOT PROJECT UNCONTROLLED CENTERLINE PLAN | |
| Drawing no. 8 | |
| SHEET 08 OF 10 | |

Drawn by:

GRL

Designed by:

WRM

DWN by:

WRM

File No.:

MAR 2018

XXXXXXXXXXXXXXXXXXXX

XXXXXXXXXXXXXXXXXXXX

XXXXXXXXXXXXXXXXXXXX

XXXXXXXXXXXXXXXXXXXX

XXXXXXXXXXXXXXXXXXXX

XXXXXXXXXXXXXXXXXXXX

RTHLACHASCOTEE RIVER

PASCO COUNTY, FLORIDA

HYDROGRAPHIC EXAM SURVEY FY18

6-FOOT PROJECT

UNCONTROLLED CENTERLINE

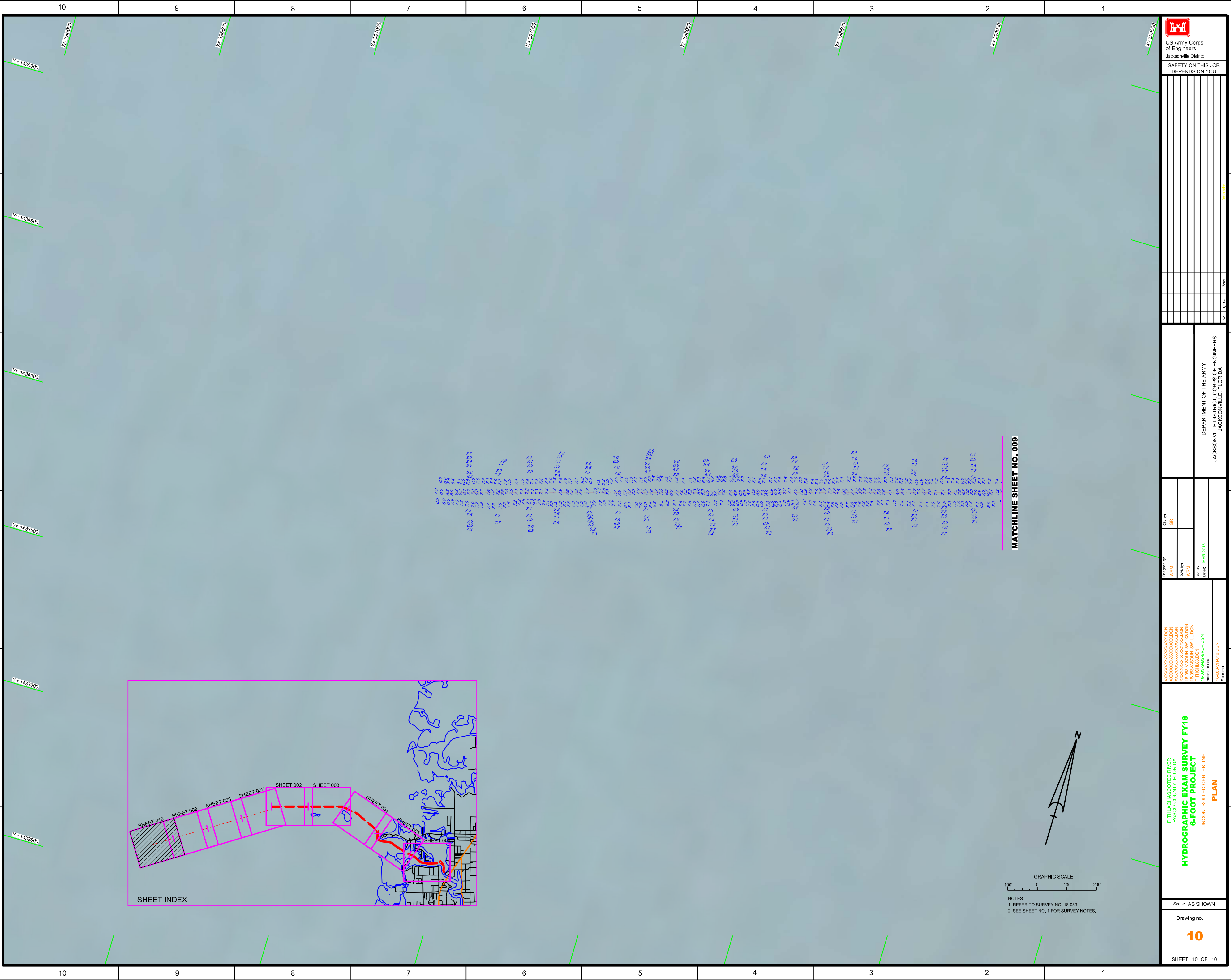
PLAN

Scale: AS SHOWN

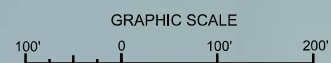
Drawing no.

10

SHEET 10 OF 10



MATCHLINE SHEET NO. 009



NOTES:
1. REFER TO SURVEY NO. 18-083.
2. SEE SHEET NO. 1 FOR SURVEY NOTES.