


AIDS TO NAVIGATION	PLANE COORDINATES		LATITUDE	LONGITUDE
	X	Y		
DBN-26 (0418)	446,059	1,120,844	27°04'56.63"	82°38'51.52"
LT-27 (0418)	445,824	1,412,070	27°24'55.23"	82°38'54.12"

GRAPHIC SCALE
100' 0 100' 200'

NOTES:
1. REFER TO SURVEY NO. 18-067.
2. SEE SHEET NO. 1 FOR SURVEY NOTES.



US Army Corps of Engineers
Jacksonville District
SAFETY ON THIS JOB
DEPENDS ON YOU

Designed by: WRM
Checked by: GHR

Drawn by: WRM
Checked by: GHR

File Name: 18-067-FY18-067-CUT M-4 MAN.DGN
Project Name: 18-067-FY18-067-CUT M-4 MAN.DGN

**HYDROGRAPHIC EXAM SURVEY FY18
9-FOOT PROJECT**

STA. 32+00 THRU STA. 65+00 CUT M-4
PLAN


DEPARTMENT OF THE ARMY
JACKSONVILLE DISTRICT, CORPS OF ENGINEERS
JACKSONVILLE, FLORIDA

Scale: AS SHOWN

Drawing no.
2 / 12

SHEET 06 OF 30

AIDS TO NAVIGATION	PLANE COORDINATES		LATITUDE	LONGITUDE
	X	Y		
DBN-28 (04/18)	4447113	11122457	27°25'12.51"	82°39'13.20"
DBN-29 (04/18)	4447173	11122180	27°25'09.77"	82°39'12.52"
LT-30 (04/18)	442886	11128476	27°25'22.55"	82°39'26.87"
CAN BUOY-31 (04/18)	442704	11128361	27°25'21.38"	82°39'28.89"
PRIV BUOY (04/18)	443076	11128053	27°25'18.35"	82°39'24.74"
SIGN (04/18)	443003	11128110	27°25'18.51"	82°39'25.56"

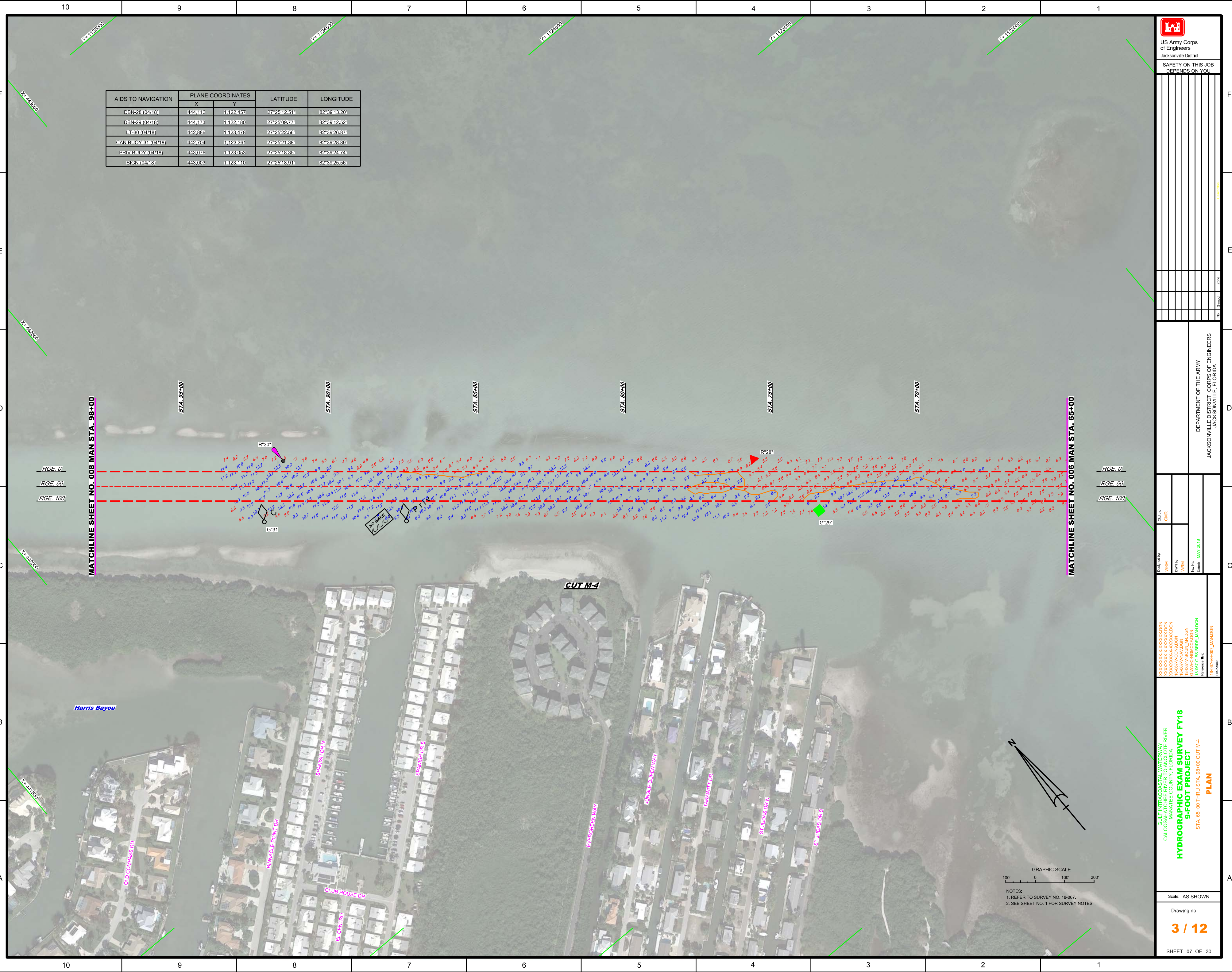

 US Army Corps of Engineers
 Jacksonville District
 SAFETY ON THIS JOB
 DEPENDS ON YOU

DEPARTMENT OF THE ARMY
 JACKSONVILLE DISTRICT, CORPS OF ENGINEERS
 JACKSONVILLE, FLORIDA

Checked By: GHR
 Designed By: WRM
 Drawn By: WRM
 File No: 18-067-9-007
 Date: MAY 2018

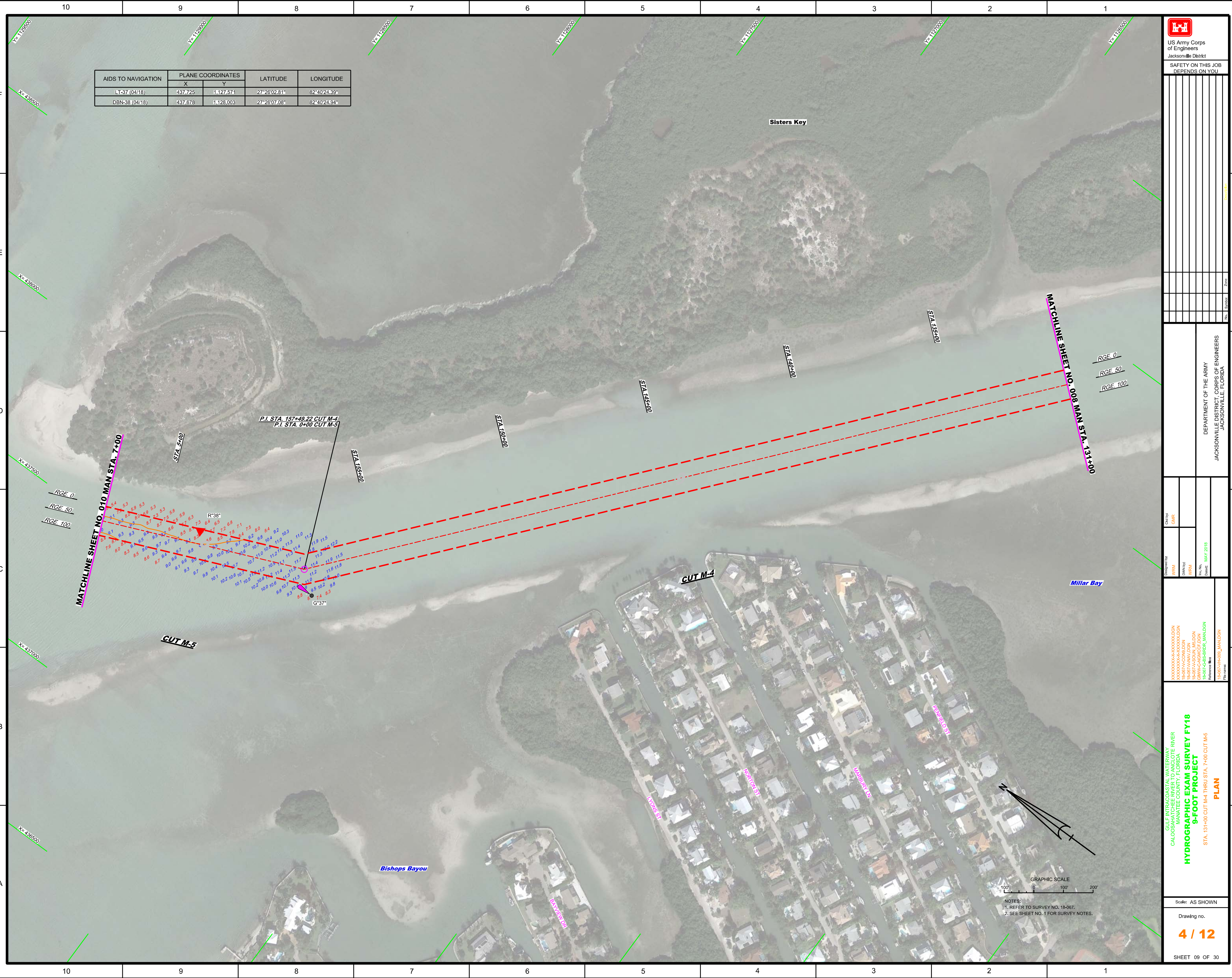
GULF INTRACOASTAL WATERWAY
 CALOOSAHATCHEE RIVER TO LAGOON RIVER
 MANATEE COUNTY, FLORIDA
HYDROGRAPHIC EXAM SURVEY FY18
9-FOOT PROJECT
 STA. 65+00 THRU STA. 98+00 CUT M-4
PLAN

Scale: AS SHOWN
 Drawing no.
3 / 12
 SHEET 07 OF 30



GRAPHIC SCALE
 100' 0 100' 200'
 NOTES:
 1. REFER TO SURVEY NO. 18-067.
 2. SEE SHEET NO. 1 FOR SURVEY NOTES.

AIDS TO NAVIGATION	PLANE COORDINATES		LATITUDE	LONGITUDE
	X	Y		
LT-37 (04/18)	437.725	1,127.571	27°26'02.81"	82°40'24.39"
DBN-38 (04/18)	437.676	1,128.003	27°26'07.06"	82°40'24.94"

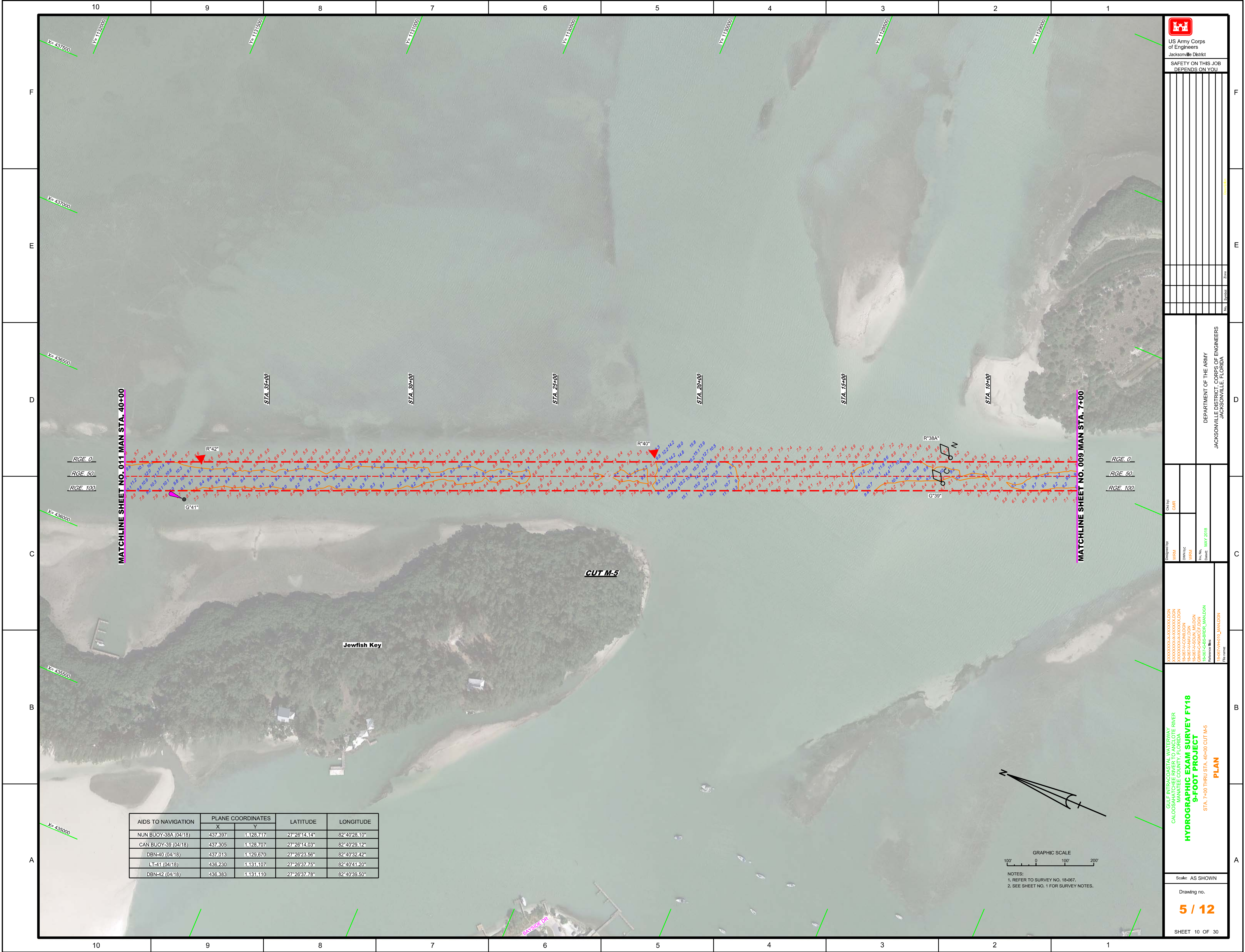



DEPARTMENT OF THE ARMY
JACKSONVILLE DISTRICT, CORPS OF ENGINEERS
JACKSONVILLE, FLORIDA

Designed by: VWM/DC
Checked by: GMR
Plotted by: VWM/DC
Drawn by: VWM/DC
Approved by: VWM/DC
Date: MAY 2018
Reference files:
18-07-PH-002_MAN.DGN
18-07-PH-002_PLAN.DGN

**GULF INTRACOASTAL WATERWAY
CALOOSAHATCHEE RIVER TO ANGLICOTE RIVER
MANATEE COUNTY, FLORIDA
HYDROGRAPHIC EXAM SURVEY FY18
9-FOOT PROJECT
PLAN
STA. 131+00 CUT M-4 THRU STA. 7+00 CUT M-5**

GRAPHIC SCALE
0 100 200
NOTES:
1. REFER TO SURVEY NO. 18-067.
2. SEE SHEET NO. 1 FOR SURVEY NOTES.





 US Army Corps of Engineers
 Jacksonville District
 SAFETY ON THIS JOB DEPENDS ON YOU

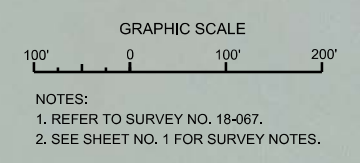
DEPARTMENT OF THE ARMY
 JACKSONVILLE DISTRICT, CORPS OF ENGINEERS
 JACKSONVILLE, FLORIDA

MATCHLINE SHEET NO. 011 MAN STA. 40+00

MATCHLINE SHEET NO. 009 MAN STA. 7+00

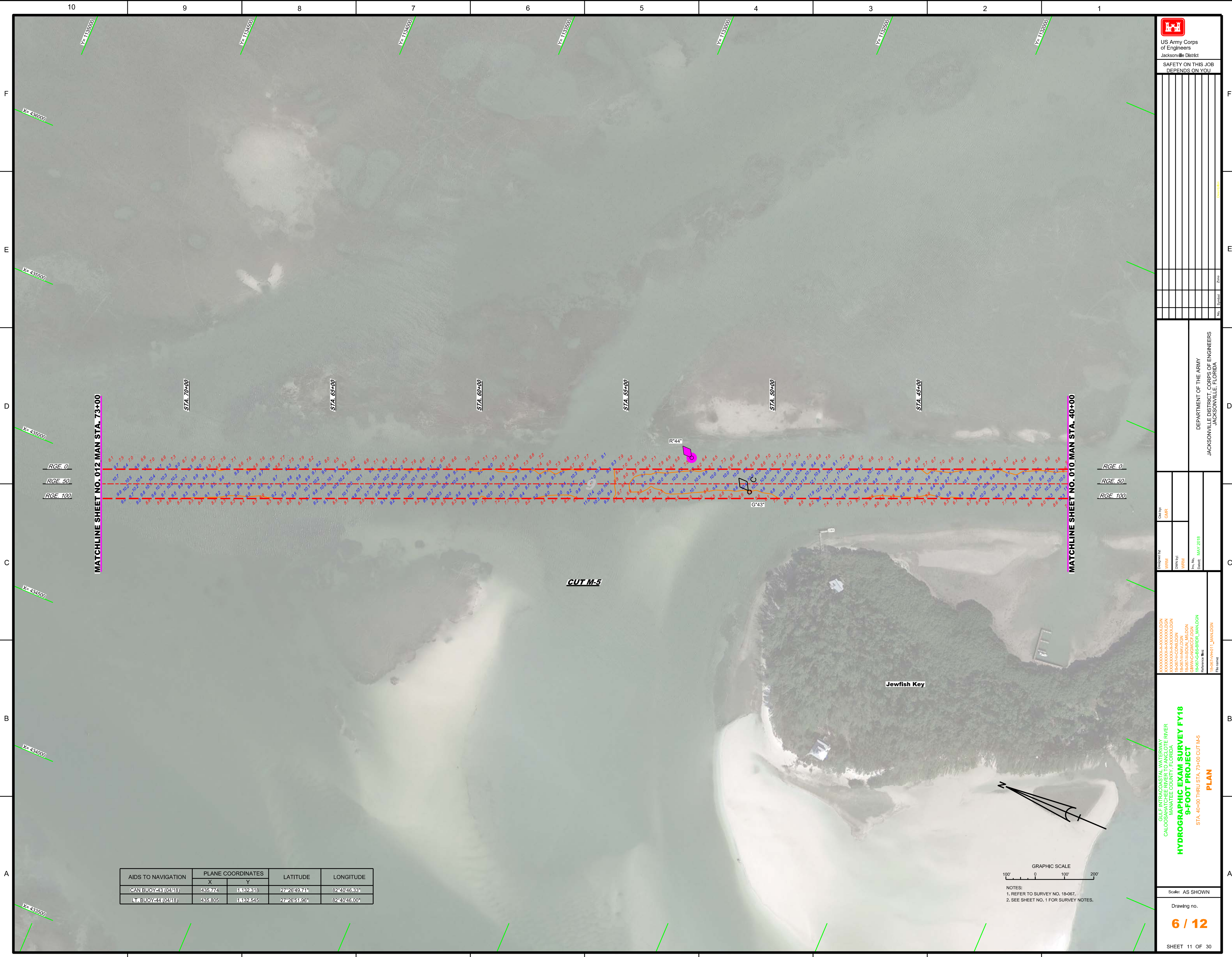


AIDS TO NAVIGATION	PLANE COORDINATES		LATITUDE	LONGITUDE
	X	Y		
NUN BUOY-38A (04/18)	437.397	1,128.717	27°26'14.14"	82°40'28.10"
CAN BUOY-39 (04/18)	437.305	1,128.707	27°26'14.03"	82°40'29.12"
DBN-40 (04/18)	437.013	1,129.670	27°26'23.56"	82°40'32.42"
LT-41 (04/18)	436.230	1,131.107	27°26'37.75"	82°40'41.20"
DBN-42 (04/18)	436.383	1,131.110	27°26'37.78"	82°40'39.50"



GULF INTRACOASTAL WATERWAY
 CALOOSAHATCHEE RIVER TO JANGLOE RIVER
 MANATEE COUNTY, FLORIDA
HYDROGRAPHIC EXAM SURVEY FY18
9-FOOT PROJECT
 STA. 7+00 THRU STA. 40+00 CUT M-5
PLAN

Scale: AS SHOWN
 Drawing no.
5 / 12
 SHEET 10 OF 30



AIDS TO NAVIGATION	PLANE COORDINATES		LATITUDE	LONGITUDE
	X	Y		
CAN. BUOY-43 (0418)	435,774	1,132,318	27°26'49.71"	82°40'46.33"
LT. BUOY-44 (0418)	435,805	1,132,545	27°26'51.06"	82°40'46.00"

GRAPHIC SCALE
 100' 0 100' 200'
 NOTES:
 1. REFER TO SURVEY NO. 18-067.
 2. SEE SHEET NO. 1 FOR SURVEY NOTES.

US Army Corps of Engineers
Jacksonville District
SAFETY ON THIS JOB
DEPENDS ON YOU

DEPARTMENT OF THE ARMY
JACKSONVILLE DISTRICT, CORPS OF ENGINEERS
JACKSONVILLE, FLORIDA

Designed by:

WRM	
DWM/PC	
WRM	
WAC	
DWM	
CHEK	
DATE	

Checked by:

GHR	
-----	--

Drawn by:

WRM	
DWM/PC	
WRM	
WAC	
DWM	
CHEK	
DATE	

Reference files:
 18-067-PAH01_L_MAN.DGN
 18-067-GB-SB-RDR_MAN.DGN
 18-067-MAV.DGN
 18-067-ACQ.DGN
 18-067-ACQ.DGN
 18-067-ACQ.DGN
 18-067-ACQ.DGN
 18-067-ACQ.DGN
 18-067-ACQ.DGN

GULF INTRACOASTAL WATERWAY
 CALOOSAHATCHEE RIVER TO JANGLEE RIVER
 MANATEE COUNTY, FLORIDA
 9-FOOT PROJECT
 STA. 40+00 THRU STA. 73+00 CUT M-5
PLAN

Scale: AS SHOWN
 Drawing no.
6 / 12
 SHEET 11 OF 30



US Army Corps of Engineers
Jacksonville District

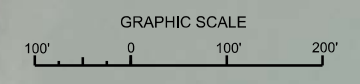
SAFETY ON THIS JOB DEPENDS ON YOU

Designed by: WRM
 Drawn by: WRM
 Checked by: WRM
 Date: MAY 2018

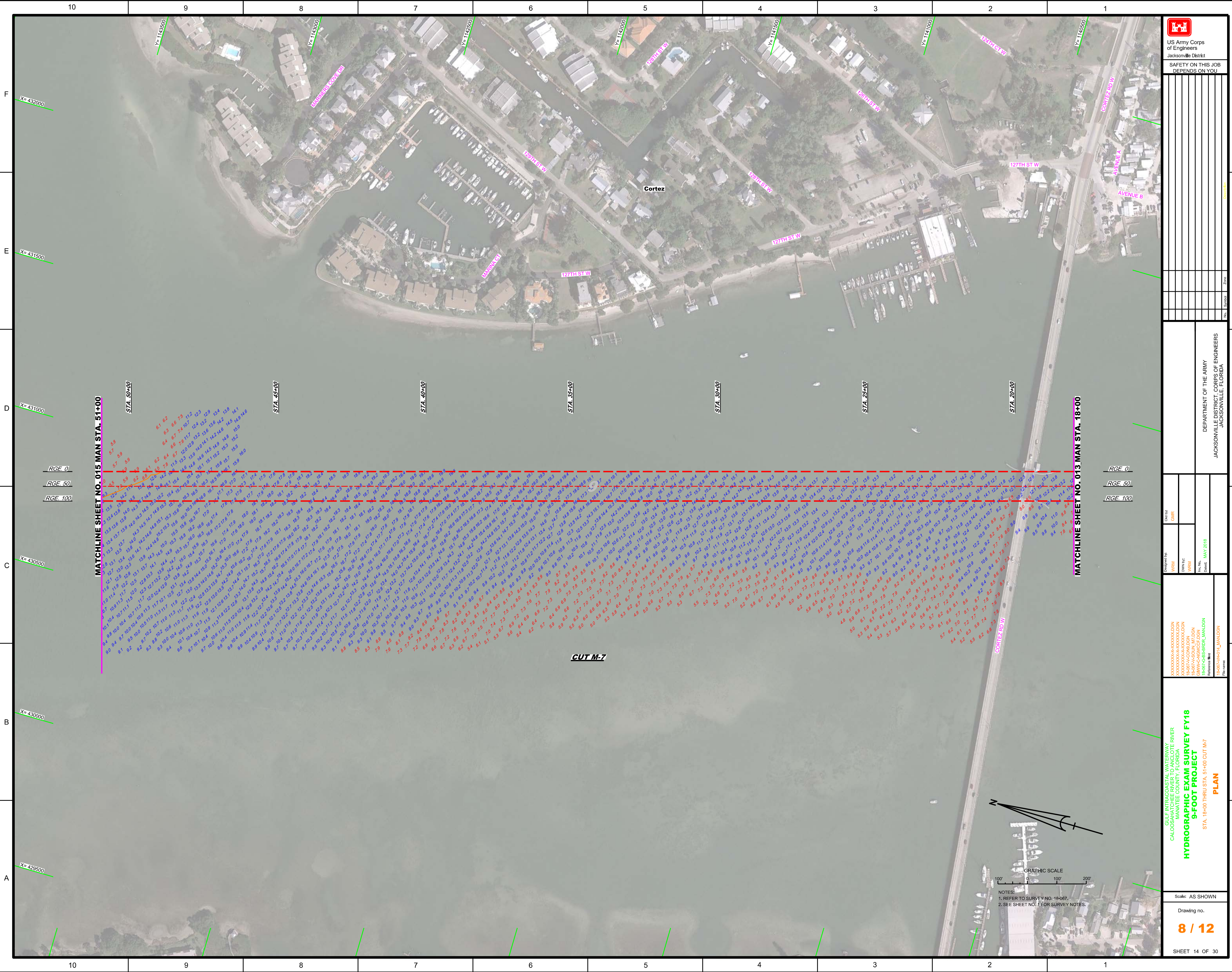
Project Name: GULF INTRACOASTAL WATERWAY
 Caloosahatchee River to Anclote River
 Manatee County, Florida
HYDROGRAPHIC EXAM SURVEY FY18
9-FOOT PROJECT
 STA. 27+00 CUT M-6 THRU STA. 18+00 CUT M-7
PLAN

Department of the Army
 Jacksonville District, Corps of Engineers
 Jacksonville, Florida

Scale: AS SHOWN
 Drawing no. **7 / 12**
 SHEET 13 OF 30



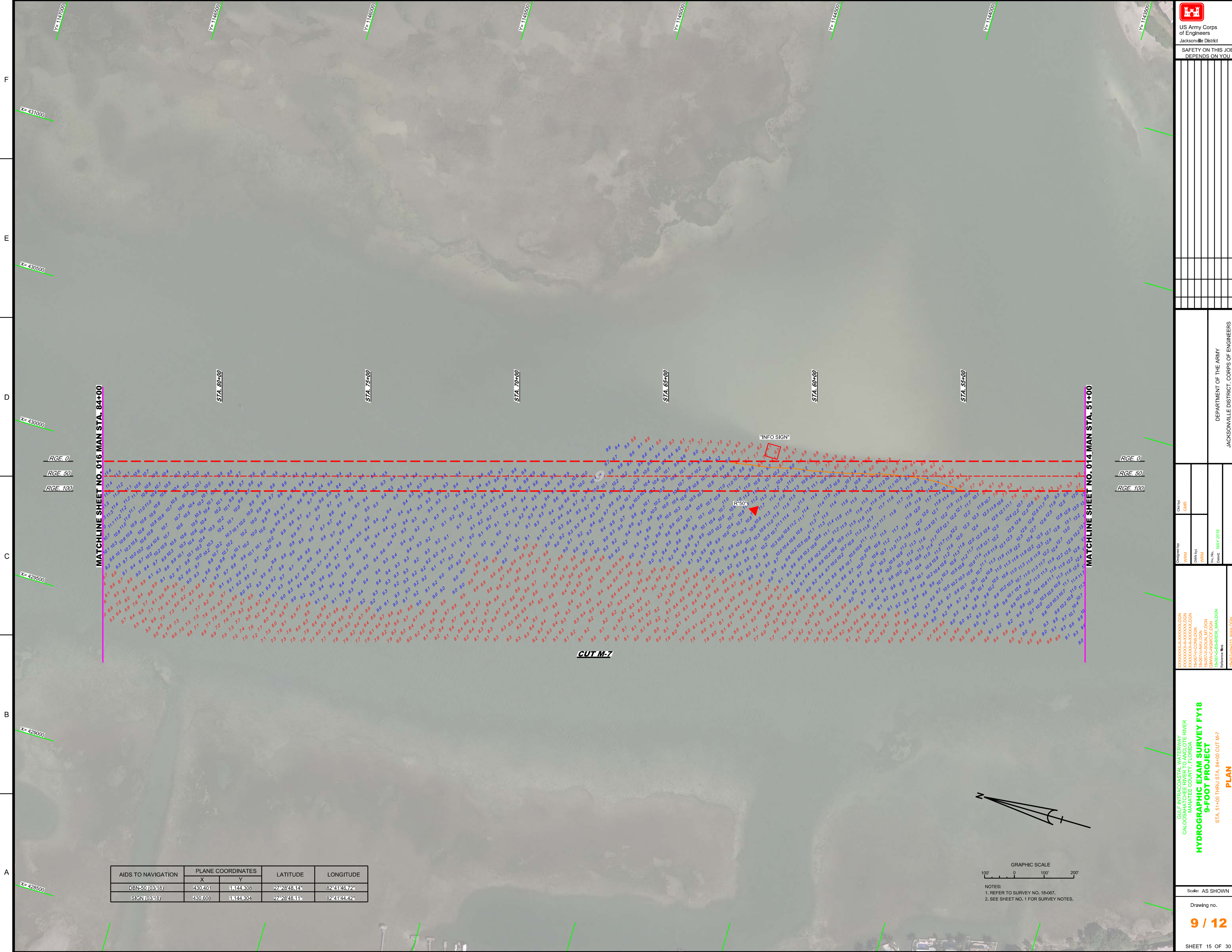
NOTES:
1. REFER TO SURVEY NO. 18-067.
2. SEE SHEET NO. 1 FOR SURVEY NOTES.



 US Army Corps of Engineers Jacksonville District SAFETY ON THIS JOB DEPENDS ON YOU	
Designed by: WRM Drawn by: WRM Checked by: WRM Date: MAY 2018	Client: GHR Department: DEPARTMENT OF THE ARMY Location: JACKSONVILLE, FLORIDA
Project Name: HYDROGRAPHIC EXAM SURVEY FY18 Project Location: 9-FOOT PROJECT Stationing: STA. 18+00 THRU STA. 51+00 CUT M-7 Drawing Title: PLAN	Drawing no.: 8 / 12 Scale: AS SHOWN SHEET 14 OF 30

GULF INTRACOASTAL WATERWAY
 CALOOSAHATCHEE RIVER TO ANGLICOTE RIVER
 MANATEE COUNTY, FLORIDA
HYDROGRAPHIC EXAM SURVEY FY18
9-FOOT PROJECT
 STA. 18+00 THRU STA. 51+00 CUT M-7
PLAN

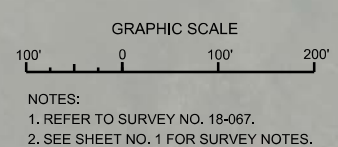
NOTES:
 1. REFER TO SURVEY NO. 18-067.
 2. SEE SHEET NO. 1 FOR SURVEY NOTES.



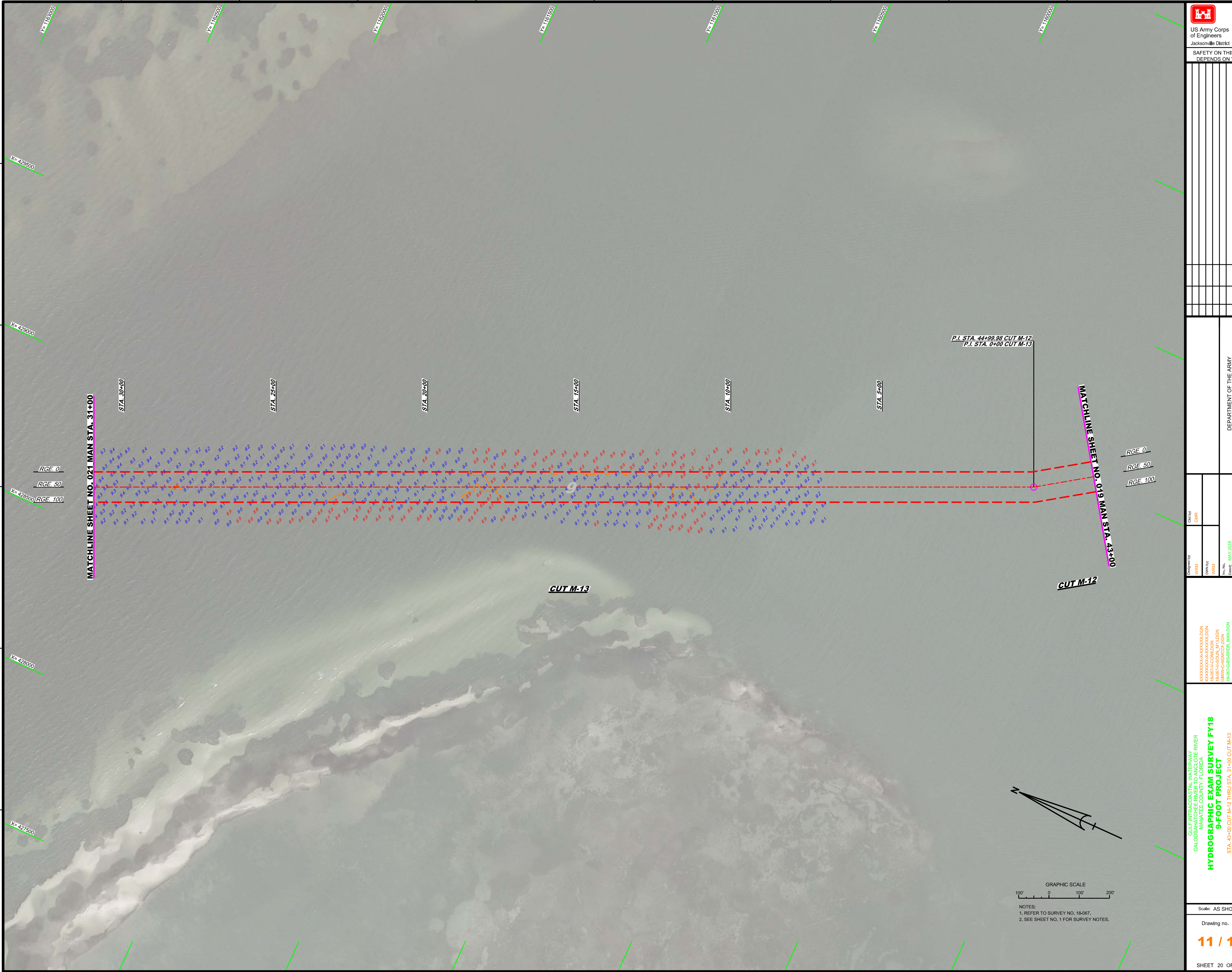
MATCHLINE SHEET NO. 016 MAN STA. 84+00


MATCHLINE SHEET NO. 014 MAN STA. 51+00

AIDS TO NAVIGATION	PLANE COORDINATES		LATITUDE	LONGITUDE
	X	Y		
DBN-50 (03/18)	430.401	1144.308	27°28'48.14"	82°41'46.72"
SIGN (03/18)	430.608	1144.304	27°28'48.11"	82°41'44.42"



 US Army Corps of Engineers Jacksonville District SAFETY ON THIS JOB DEPENDS ON YOU	
Drawn by: WRM Checked by: WRM Date: MAY 2018	Department of the Army Jacksonville District, Corps of Engineers Jacksonville, Florida
HYDROGRAPHIC EXAM SURVEY FY18 9-FOOT PROJECT STA. 51+00 THRU STA. 84+00 CUT M-7 PLAN	
Drawing no. 9 / 12 SHEET 15 OF 30	Scale: AS SHOWN



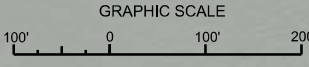

 US Army Corps of Engineers
 Jacksonville District
 SAFETY ON THIS JOB DEPENDS ON YOU

DEPARTMENT OF THE ARMY
 JACKSONVILLE DISTRICT, CORPS OF ENGINEERS
 JACKSONVILLE, FLORIDA

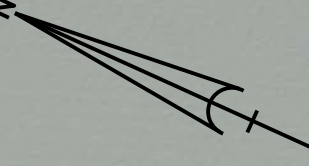
Designed by: WRM
 DWN/PJZ
 Checked by: WRM
 Date: MAY 2018
 File Name: 18-067-PAH202L_MAN.DGN
 File Name: 18-067-PAH202L_MAN.DGN

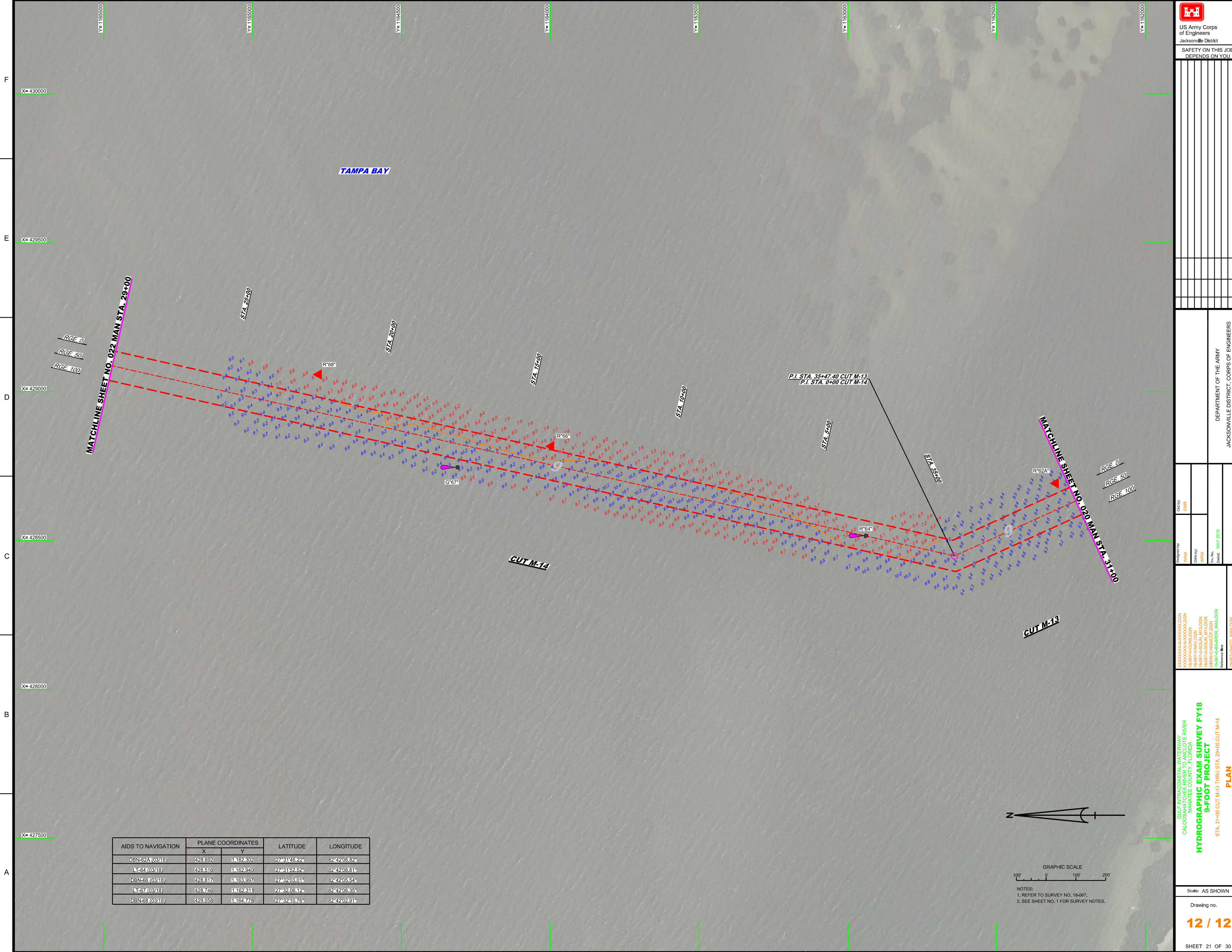
GULF INTRACOASTAL WATERWAY
 CALOOSAHATCHEE RIVER TO ANGLICOTE RIVER
 MANATEE COUNTY, FLORIDA
HYDROGRAPHIC EXAM SURVEY FY18
9-FOOT PROJECT
 STA. 43+00 CUT M-12 THRU STA. 31+00 CUT M-13
PLAN

Scale: AS SHOWN
 Drawing no.
11 / 12
 SHEET 20 OF 30



NOTES:
 1. REFER TO SURVEY NO. 18-067.
 2. SEE SHEET NO. 1 FOR SURVEY NOTES.





TAMPA BAY

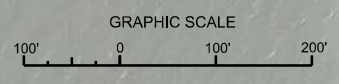
MATCHLINE SHEET NO. 022 MAN STA. 29+00

MATCHLINE SHEET NO. 020 MAN STA. 31+00

CUT M-14

CUT M-13

AIDS TO NAVIGATION	PLANE COORDINATES		LATITUDE	LONGITUDE
	X	Y		
DBN-52A (03/18)	428 692	1 162 302	27°31'48.22"	82°42'08.82"
LT-64 (03/18)	428 516	1 162 940	27°31'52.52"	82°42'08.81"
DBN-66 (03/18)	428 817	1 163 997	27°32'03.01"	82°42'05.54"
LT-57 (03/18)	428 746	1 162 311	27°32'06.12"	82°42'08.35"
DBN-68 (03/18)	429 058	1 164 778	27°32'10.76"	82°42'02.51"



NOTES:
 1. REFER TO SURVEY NO. 18-067.
 2. SEE SHEET NO. 1 FOR SURVEY NOTES.

US Army Corps
of Engineers
Jacksonville District

SAFETY ON THIS JOB
DEPENDS ON YOU

DEPARTMENT OF THE ARMY
 JACKSONVILLE DISTRICT, CORPS OF ENGINEERS
 JACKSONVILLE, FLORIDA

Checked by GHR	Designed by WRM
Drawn by WBM	Plot Date MAY 2018

XXXXXXXXXXXXXXXXXXXX.DGN
 XXXXXXXXXXXXXXXXXXXX.DGN
 XXXXXXXXXXXXXXXXXXXX.DGN
 XXXXXXXXXXXXXXXXXXXX.DGN
 XXXXXXXXXXXXXXXXXXXX.DGN
 XXXXXXXXXXXXXXXXXXXX.DGN
 XXXXXXXXXXXXXXXXXXXX.DGN
 XXXXXXXXXXXXXXXXXXXX.DGN
 XXXXXXXXXXXXXXXXXXXX.DGN
 XXXXXXXXXXXXXXXXXXXX.DGN
 XXXXXXXXXXXXXXXXXXXX.DGN

HYDROGRAPHIC EXAM SURVEY FY18
9-FOOT PROJECT
 STA. 31+00 CUT M-13 THRU STA. 29+00 CUT M-14
PLAN

Scale: AS SHOWN

Drawing no.
12 / 12

SHEET 21 OF 30