

GIWW - SARASOTA COUNTY, FLORIDA CUTS S-11 THRU S-17, S-20, S-21, S-28, S-34A THRU S-37 AND S-39 HYDROGRAPHIC EXAM SURVEY FY18 9-FOOT PROJECT

SURVEY NOTES

- REFER TO SURVEY NO. 18-064.
- SOUNDINGS ARE IN FEET AND TENTHS AND REFER TO NOAA'S REPORTED MEAN LOWER LOW WATER (MLLW) OF THE 1983-2001 TIDAL EPOCH.
- TIDAL REDUCTIONS WERE OBTAINED UTILIZING A REAL-TIME KINEMATIC (RTK) GPS AND REFERENCED TO MLLW UTILIZING A HYPACK KINEMATIC TIDE DATUM (KTD) MODEL. KTD FILE NAME IS: "SPC-FL-WEST-2010-12-07.KTD".
- ALL ELEVATIONS ARE BELOW THE CHART DATUM UNLESS PRECEDED BY A (+) SIGN.
- PLANE COORDINATES ARE BASED ON THE TRANSVERSE MERCATOR PROJECTION FOR THE WEST ZONE OF FLORIDA AND REFERENCED TO NORTH AMERICAN DATUM OF 1983 (NAD83).
- ALL STATIONING REFERS TO THE CENTERLINE OF THE CHANNEL.
- THIS SURVEY WAS PERFORMED USING REAL-TIME KINEMATIC (RTK) GPS POSITIONING WITH THE FOLLOWING REFERENCE BASE LOCATIONS:
 REFERENCE BASE LOCATED AT "GIWW 5 S" (PID: BBFB84)
 REFERENCE BASE LOCATED AT "C LISTOWSKI" (PID: BBDX69)
 REFERENCE BASE LOCATED AT "872 5899 A TIDAL" (PID: DL9718)
 REFERENCE BASE LOCATED AT "1WSA-96" (PID: BBDG39)
 REFERENCE BASE LOCATED AT "GIWW 6 S" (PID: BBFB87)
- DEPTHS DEPICTED BY THIS SURVEY ARE REFERENCED TO MLLW, TIDAL EPOCH 1983-2001 AS REPORTED BY THE NATIONAL OCEANIC AND ATMOSPHERIC ADMINISTRATION (NOAA). A MODIFIED VERSION OF NOAA'S VDATUM MODEL WAS USED TO CALIBRATE TO THE PUBLISHED MLLW HEIGHTS OF THE BELOW:
 NGS CONTROL POINT "X-38" USED FOR CUTS S-11 THRU S-16 (PID: AG1880)
 NOAA TIDAL STATION 872 5899 FOR CUTS S-17, S-20, S-21 (PID: DL9719)
 NOAA TIDAL STATION 872 5843 FOR CUT S-28 (PID: AG7167)
 NOAA TIDAL STATION 872 6083 FOR CUTS S-34B THRU S-37, S-39 (PID: AG7713)
- VERTICAL MEASUREMENTS WERE MADE USING AN EDGETECH 6205 COMBINED MULTI-BEAM AND SIDESCAN. ALL SOUNDINGS SHOWN ARE IN HIGH FREQUENCY.

VESSEL	DATE OF SURVEY	CUT
SB-44	20-21 FEB 2018	S-11 THRU S-16
SB-44	22 FEB 2018	S-17, S-20
SB-44	05 MAR 2018	S-20, S-21
SB-44	06 MAR 2018	S-28
SB-44	07 MAR 2018	S-34B THRU S-37, S-39

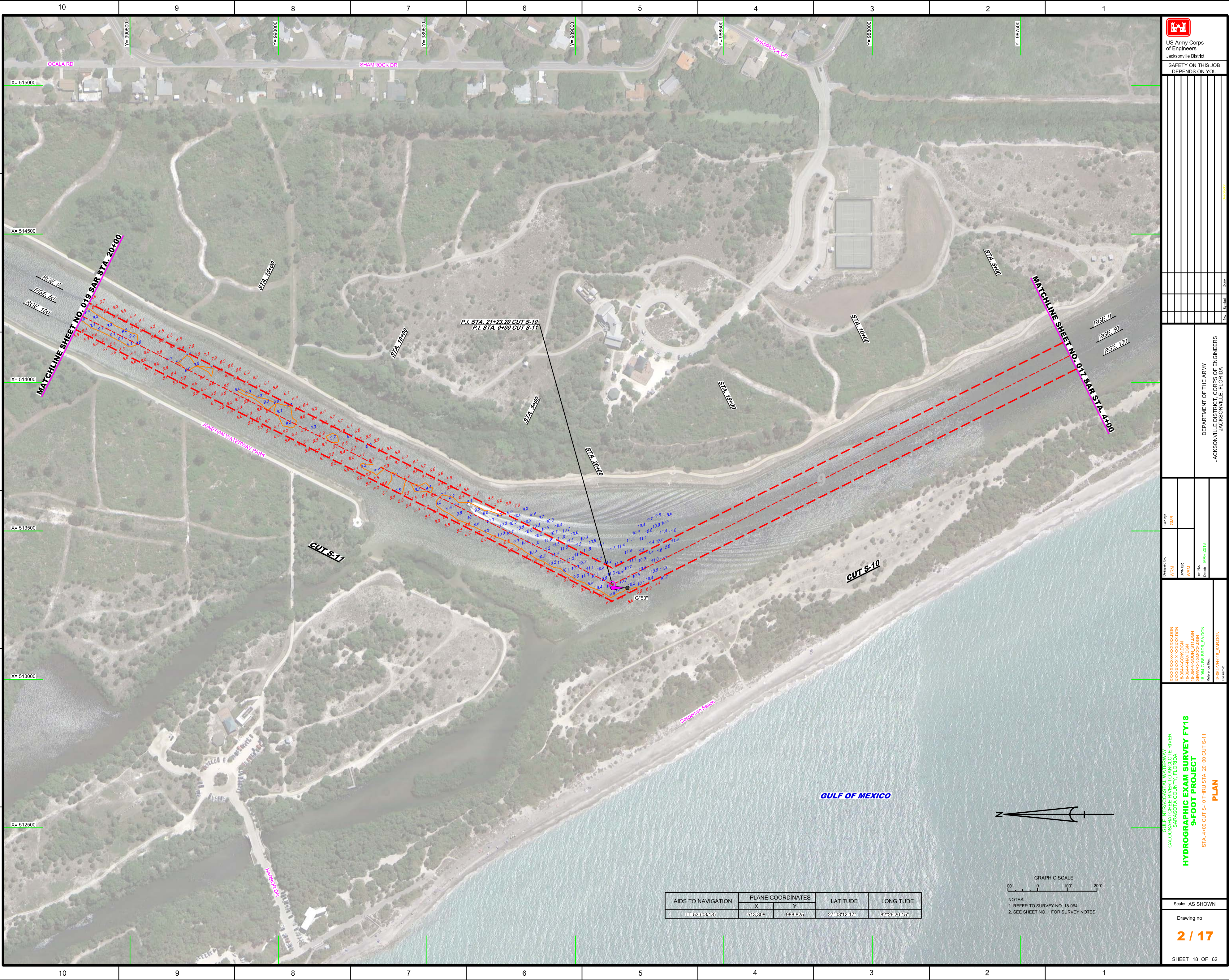
LEGEND	
	MONUMENT
	LIGHTED BEACON
	GREEN DAYBEACON
	RED DAYBEACON
	RED LIGHTED BUOY
	GREEN LIGHTED BUOY
	CAN BUOY
	NUN BUOY
	TIDE STAFF
	PROJECT DEPTH

US Army Corps of Engineers
Jacksonville District
SAFETY ON THIS JOB
DEPENDS ON YOU

DEPARTMENT OF THE ARMY
JACKSONVILLE DISTRICT, CORPS OF ENGINEERS
JACKSONVILLE, FLORIDA

Hydrographic Exam Survey FY18
9-Foot Project
INDEX, LOCATION AND VICINITY
MAP

Scale: AS SHOWN
Drawing no.
1 / 17
SHEET 01 OF 62



US Army Corps of Engineers
Jacksonville District
SAFETY ON THIS JOB DEPENDS ON YOU

DEPARTMENT OF THE ARMY
JACKSONVILLE DISTRICT, CORPS OF ENGINEERS
JACKSONVILLE, FLORIDA

XXXXXXXXXXXXXXXXXXXX
R064A-COON.DGN
R064A-HAV.DGN
R064A-KWGGC.DGN
R064A-SB-SRDR_SAL.DGN
R064A-PHLE_SAR.DGN

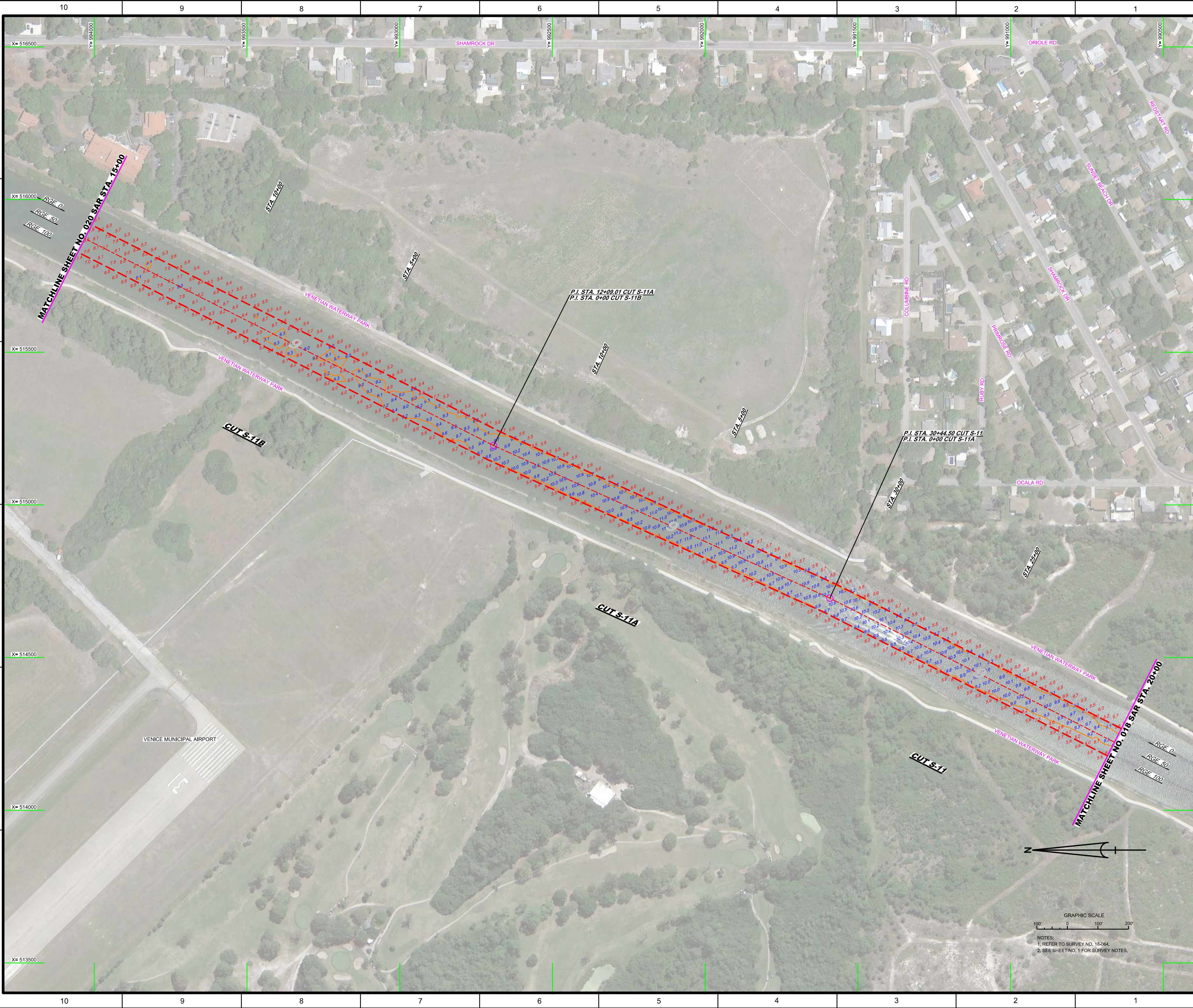
HYDROGRAPHIC EXAM SURVEY FY18
9-FOOT PROJECT
STA. 4+00 CUT S-10 THRU STA. 20+00 CUT S-11
PLAN

Scale: AS SHOWN
Drawing no.
2 / 17
SHEET 18 OF 62

AIDS TO NAVIGATION	PLANE COORDINATES		LATITUDE	LONGITUDE
	X	Y		
LT-53 (03/18)	513,308	988,825	27°03'12.17"	82°28'20.15"



NOTES:
1. REFER TO SURVEY NO. 19-064.
2. SEE SHEET NO. 1 FOR SURVEY NOTES.



US Army Corps of Engineers

 Jacksonville District

 SAFETY ON THIS JOB

 DEPENDS ON YOU

DEPARTMENT OF THE ARMY

 JACKSONVILLE DISTRICT, CORPS OF ENGINEERS

 JACKSONVILLE, FLORIDA

Call By: GHR

 Designed By: WRM

 Drawn By: WRM

 File No: MAR 2018

 Date: MAR 2018

GULF INTRACOSTAL WATERWAY PROJECT

 CALOOCATA WATERWAY PROJECT

 SARASOTA COUNTY, FLORIDA

HYDROGRAPHIC EXAM SURVEY FY18

9-FOOT PROJECT

 STA. 20+00 CUT S-11 THRU STA. 15+00 CUT S-11B

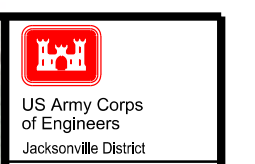
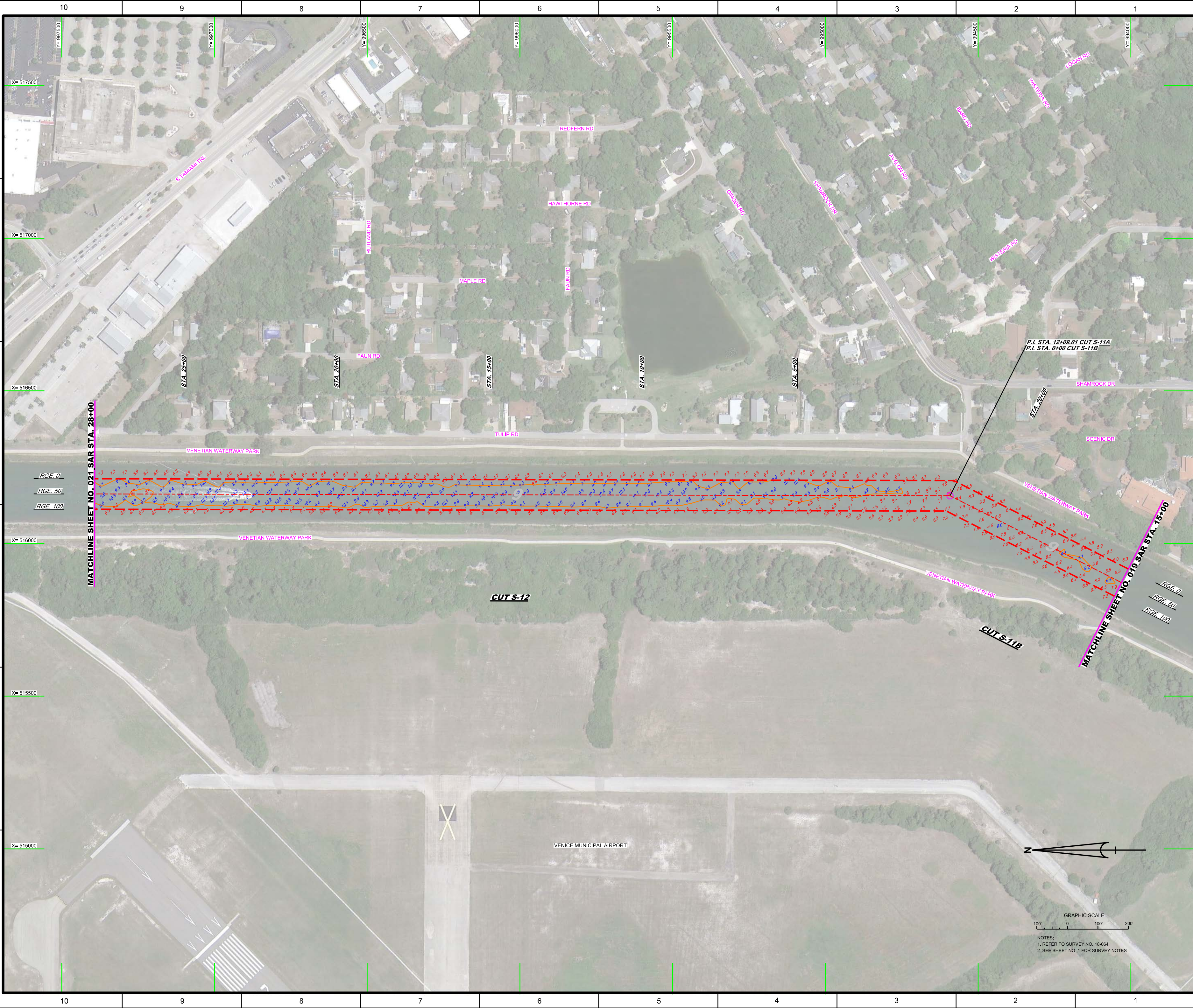
PLAN



NOTES:

 1. REFER TO SURVEY NO. 18-064.

 2. SEE SHEET NO. 1 FOR SURVEY NOTES.



US Army Corps of Engineers
Jacksonville District

SAFETY ON THIS JOB
DEPENDS ON YOU

No.	Symbol	Zone	Description

DEPARTMENT OF THE ARMY
JACKSONVILLE DISTRICT, CORPS OF ENGINEERS
JACKSONVILLE, FLORIDA

Designated By: WRM	Drawn By: WRM	Checked By: WRM
Designed For: VENETIAN WATERWAY PARK	Drawn For: VENETIAN WATERWAY PARK	Checked For: VENETIAN WATERWAY PARK
Date: MAR 2018	Date: MAR 2018	Date: MAR 2018
File Name: 18-064-HYD2L_SAR.DGN	File Name: 18-064-HYD2L_SAR.DGN	File Name: 18-064-HYD2L_SAR.DGN

GULF INTRACONSTANTAL WATERWAY RIVER
CALOOCHEE RIVER
SARASOTA COUNTY, FLORIDA

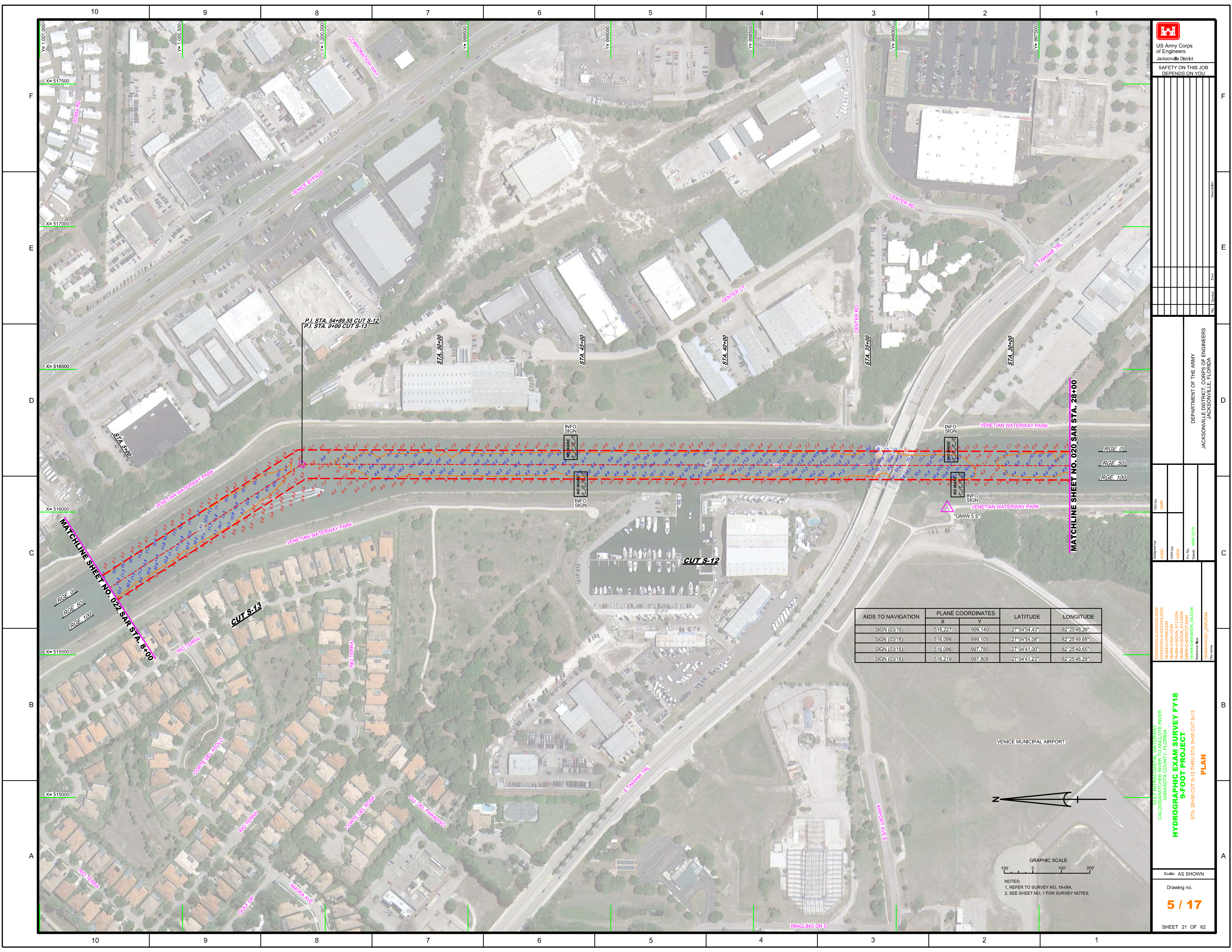
HYDROGRAPHIC EXAM SURVEY FY18
9-FOOT PROJECT
PLAN

STA. 15+00 CUT S-11B THRU STA. 28+00 CUT S-12

Scale: AS SHOWN

GRAPHIC SCALE
Scale: AS SHOWN
100' 0 100' 200'

NOTES:
1, REFER TO SURVEY NO. 18-064.
2, SEE SHEET NO. 1 FOR SURVEY NOTES.

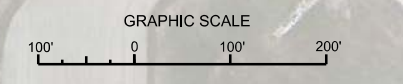


P.I. STA. 54+89.55 CUT S-12
 P.I. STA. 0+00 CUT S-13

MATCHLINE SHEET NO. 020 SAR STA. 28+00

MATCHLINE SHEET NO. 022 SAR STA. 3+00

AIDS TO NAVIGATION	PLANE COORDINATES		LATITUDE	LONGITUDE
	X	Y		
SIGN (03/18)	516,227	999,140	27°04'54.43"	82°25'48.26"
SIGN (03/18)	516,098	999,105	27°04'54.06"	82°25'49.68"
SIGN (03/18)	516,096	997,785	27°04'41.00"	82°25'49.65"
SIGN (03/18)	516,219	997,808	27°04'41.23"	82°25'48.29"



NOTES:
 1. REFER TO SURVEY NO. 18-064.
 2. SEE SHEET NO. 1 FOR SURVEY NOTES.

US Army Corps of Engineers
 Jacksonville District
 SAFETY ON THIS JOB
 DEPENDS ON YOU

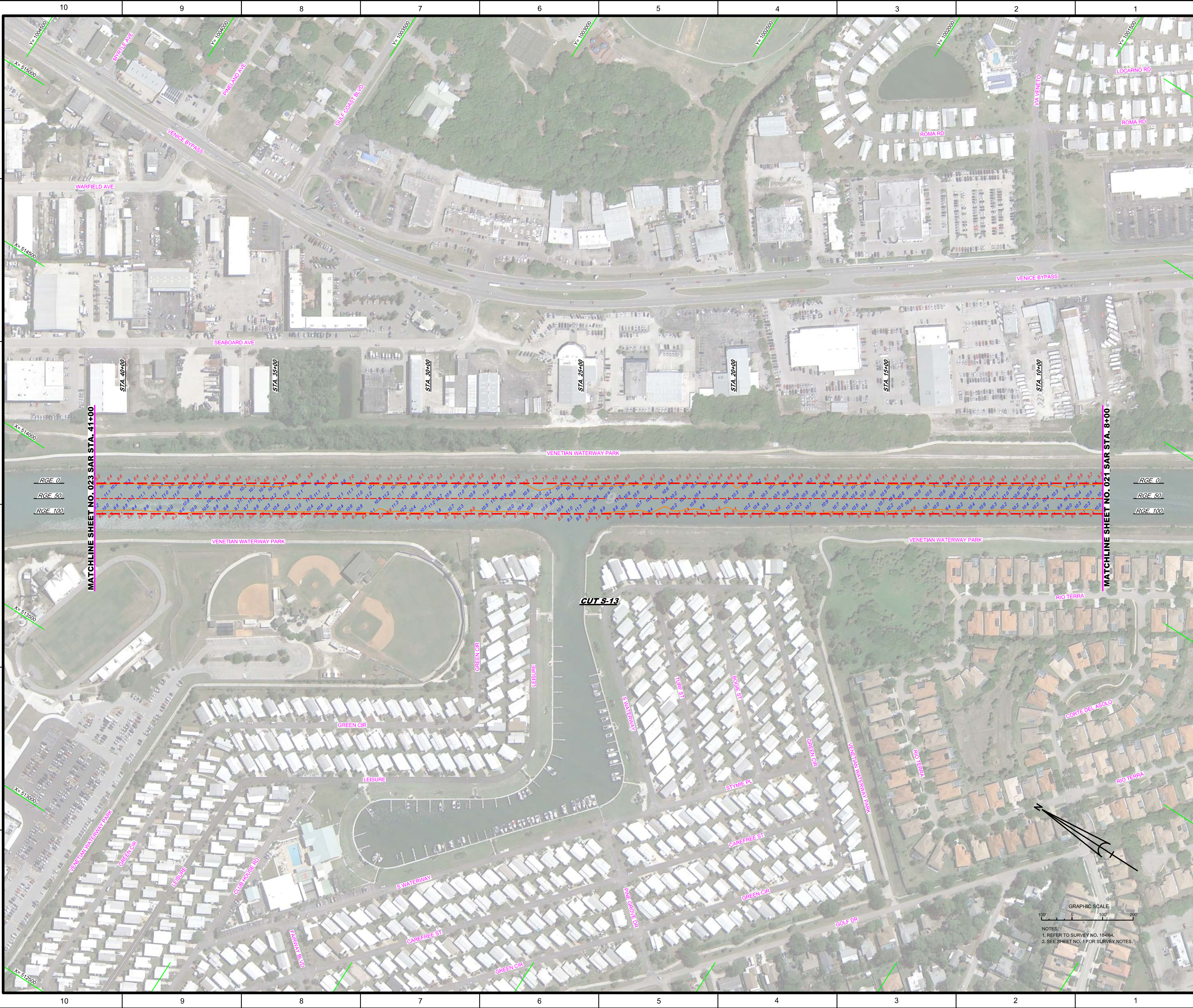
DEPARTMENT OF THE ARMY
 JACKSONVILLE DISTRICT, CORPS OF ENGINEERS
 JACKSONVILLE, FLORIDA

Call by: GHR
 Designed by: WRM
 Drawn by: WRM
 File No: MAR 2018
 Date: MAR 2018

XXXXXXXXXXXXXXXXXXXX.DGN
 XXXXXXXXXXXXXXXXXXXX.DGN
 XXXXXXXXXXXXXXXXXXXX.DGN
 18-064-AV.DGN
 18-064-SOIL_S12.DGN
 18-064-SOIL_S13.DGN
 18-064-EGG.DGN
 18-064-ES-RDR_SAL.DGN
 18-064-HAZ_L_SAR.DGN

HYDROGRAPHIC EXAM SURVEY FY18
9-FOOT PROJECT
 STA. 28+00 CUT S-12 THRU STA. 8+00 CUT S-13
PLAN

Scale: AS SHOWN
 Drawing no.
5 / 17
 SHEET 21 OF 62

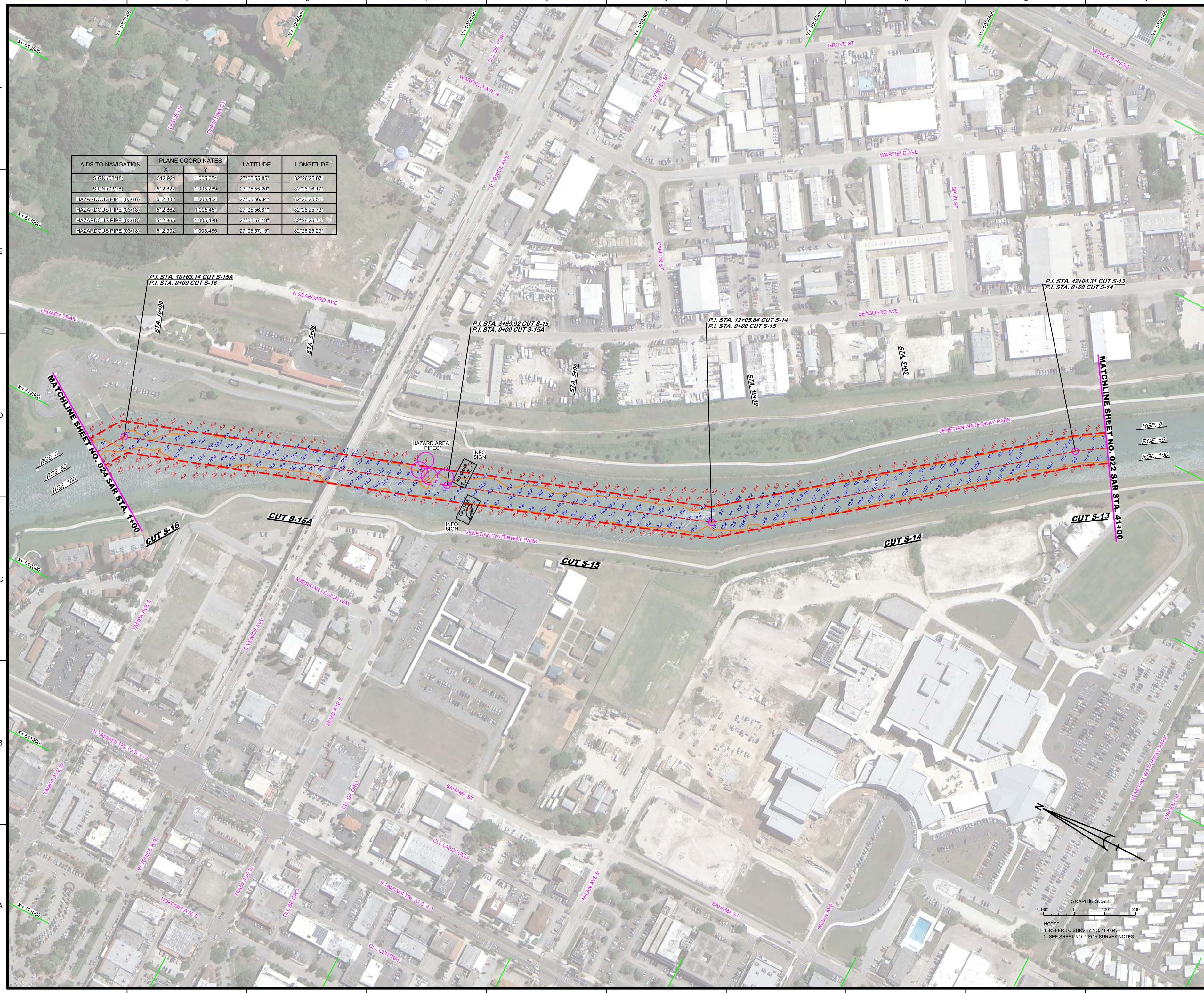


<p>US Army Corps of Engineers Jacksonville District</p>	
<p>SAFETY ON THIS JOB DEPENDS ON YOU</p>	
<p>DEPARTMENT OF THE ARMY JACKSONVILLE DISTRICT, CORPS OF ENGINEERS JACKSONVILLE, FLORIDA</p>	
<p>Drawn by: WRM</p>	<p>Checked by: GHR</p>
<p>Design Date: MAR 2018</p>	<p>Scale: AS SHOWN</p>
<p>HYDROGRAPHIC EXAM SURVEY FY18 9-FOOT PROJECT</p>	
<p>STA. 8+00 THRU STA. 41+00 CUT S-13 PLAN</p>	
<p>SHEET 22 OF 62</p>	

GRAPHIC SCALE
0 100 200

NOTES:
1. REFER TO SURVEY NO. 18-064.
2. SEE SHEET NO. 1 FOR SURVEY NOTES.

AIDS TO NAVIGATION	PLANE COORDINATES		LATITUDE	LONGITUDE
	X	Y		
SIGN (03/18)	512.921	1,005.354	27°05'55.85"	82°26'25.07"
SIGN (03/18)	512.822	1,005.289	27°05'55.20"	82°26'26.17"
HAZARDOUS PIPE (03/18)	512.882	1,005.404	27°05'56.34"	82°26'25.51"
HAZARDOUS PIPE (03/18)	512.862	1,005.451	27°05'56.81"	82°26'25.73"
HAZARDOUS PIPE (03/18)	512.885	1,005.499	27°05'57.19"	82°26'25.70"
HAZARDOUS PIPE (03/18)	512.902	1,005.485	27°05'57.15"	82°26'25.29"



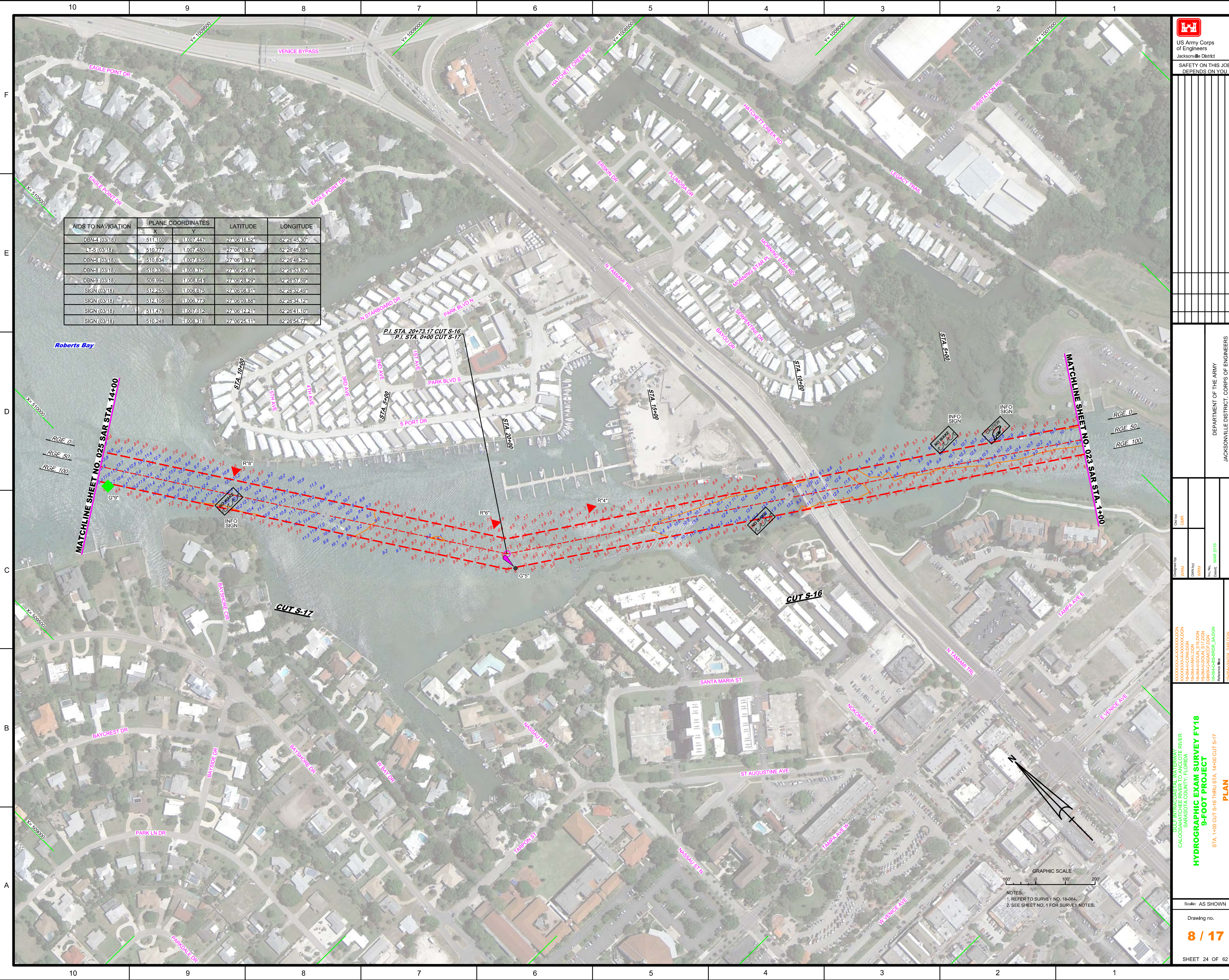
US Army Corps of Engineers
Jacksonville District
SAFETY ON THIS JOB DEPENDS ON YOU

DEPARTMENT OF THE ARMY
JACKSONVILLE DISTRICT, CORPS OF ENGINEERS
JACKSONVILLE, FLORIDA

Drawn by: **WRM**
Checked by: **WRM**
Date: **MAR 2018**

HYDROGRAPHIC EXAM SURVEY FY18
9-FOOT PROJECT
PLAN
STA. 41+00 CUT S-13 THRU STA. 1+00 CUT S-16

Scale: AS SHOWN
Drawing no. **7 / 17**
SHEET 23 OF 62



AIDS TO NAVIGATION	PLANE COORDINATES		LATITUDE	LONGITUDE
	X	Y		
DBN-1 (03/18)	511.100	1.007.447	27°06'16.52"	82°26'45.30"
LT-5 (03/18)	510.777	1.007.480	27°06'16.83"	82°26'46.88"
DBN-6 (03/18)	510.834	1.007.635	27°06'18.37"	82°26'46.25"
DBN-8 (03/18)	510.836	1.008.375	27°06'25.68"	82°26'53.80"
DBN-9 (03/18)	509.994	1.008.641	27°06'28.29"	82°26'57.59"
SIGN (03/18)	512.255	1.006.675	27°06'08.91"	82°26'32.49"
SIGN (03/18)	512.108	1.006.773	27°06'09.88"	82°26'34.12"
SIGN (03/18)	511.476	1.007.012	27°06'12.21"	82°26'41.10"
SIGN (03/18)	510.248	1.008.818	27°06'25.11"	82°26'54.77"

US Army Corps of Engineers Jacksonville District SAFETY ON THIS JOB DEPENDS ON YOU	
DESIGNED BY:	WRM
DRAWN BY:	WRM
CHECKED BY:	WRM
DATE:	MAR 2018
PROJECT NO.:	18-066-AAVY-DDN
PROJECT NAME:	HYDROGRAPHIC EXAM SURVEY FY18
DATE:	MAR 2018
SCALE:	AS SHOWN
PROJECT LOCATION:	GULF INTRACOASTAL WATERWAY (GULF RIVER) SARASOTA COUNTY, FLORIDA
PROJECT DESCRIPTION:	HYDROGRAPHIC EXAM SURVEY FY18 9-FOOT PROJECT STA. 1+00 CUT S-16 THRU STA. 14+00 CUT S-17
DRAWING NO.:	8 / 17
SHEET:	24 OF 62

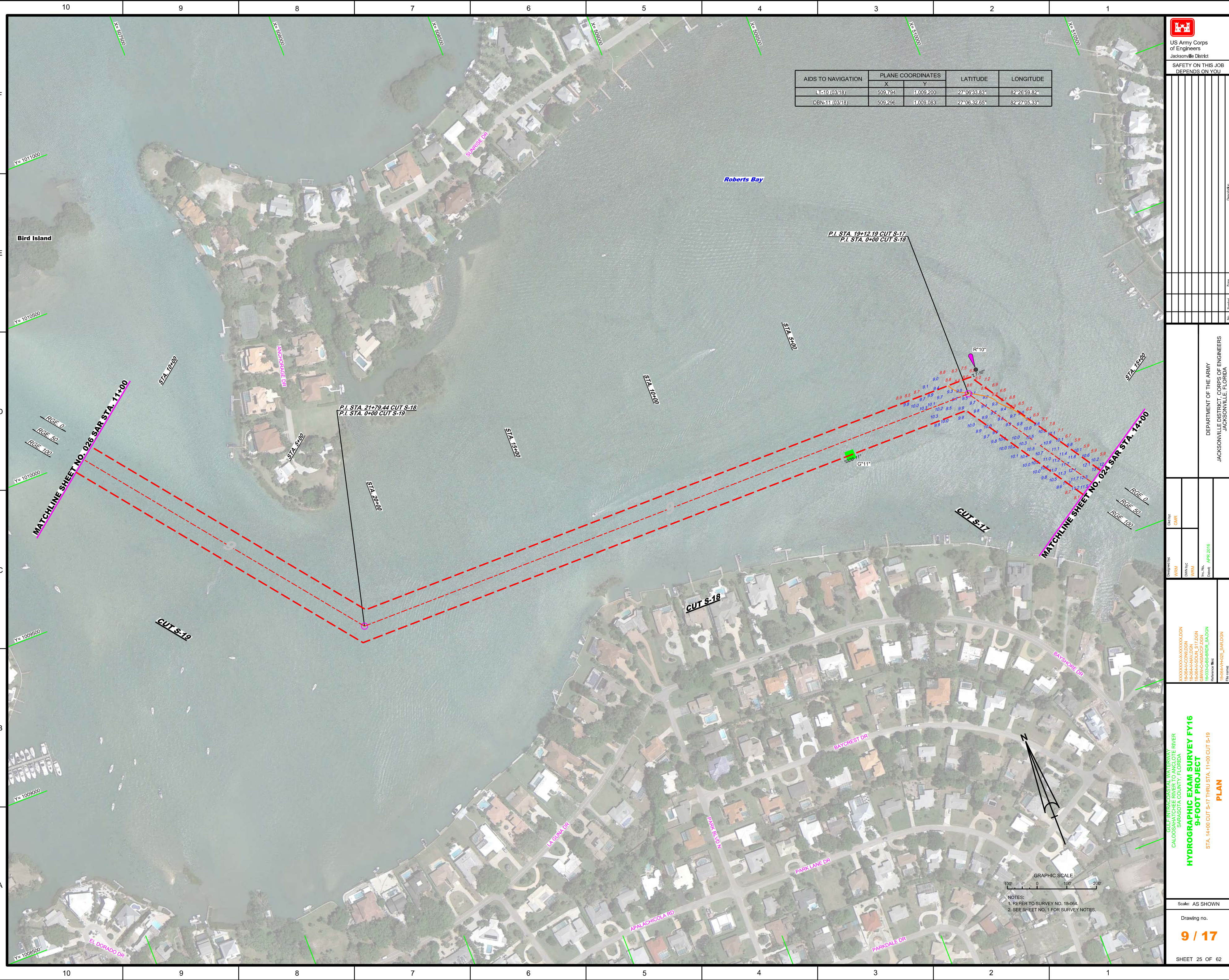
NOTES:
 1. REFER TO SURVEY NO. 18-064.
 2. SEE SHEET NO. 1 FOR SURVEY NOTES.

DEPARTMENT OF THE ARMY
 JACKSONVILLE DISTRICT, CORPS OF ENGINEERS
 JACKSONVILLE, FLORIDA

DESIGNED BY: WRM
 DRAWN BY: WRM
 CHECKED BY: WRM
 DATE: MAR 2018
 PROJECT NO.: 18-066-AAVY-DDN
 PROJECT NAME: HYDROGRAPHIC EXAM SURVEY FY18
 DATE: MAR 2018
 SCALE: AS SHOWN
 PROJECT LOCATION: GULF INTRACOASTAL WATERWAY (GULF RIVER) SARASOTA COUNTY, FLORIDA
 PROJECT DESCRIPTION: HYDROGRAPHIC EXAM SURVEY FY18 9-FOOT PROJECT STA. 1+00 CUT S-16 THRU STA. 14+00 CUT S-17

Drawing no. **8 / 17**
 SHEET 24 OF 62

AIDS TO NAVIGATION	PLANE COORDINATES		LATITUDE	LONGITUDE
	X	Y		
L-10 (0318)	509,794	1,009,200	27°06'33.83"	82°26'59.82"
DBN-11 (0318)	509,296	1,009,083	27°06'32.65"	82°27'05.33"



NOTES:
 1. REFER TO SURVEY NO. 18-064.
 2. SEE SHEET NO. 1 FOR SURVEY NOTES.

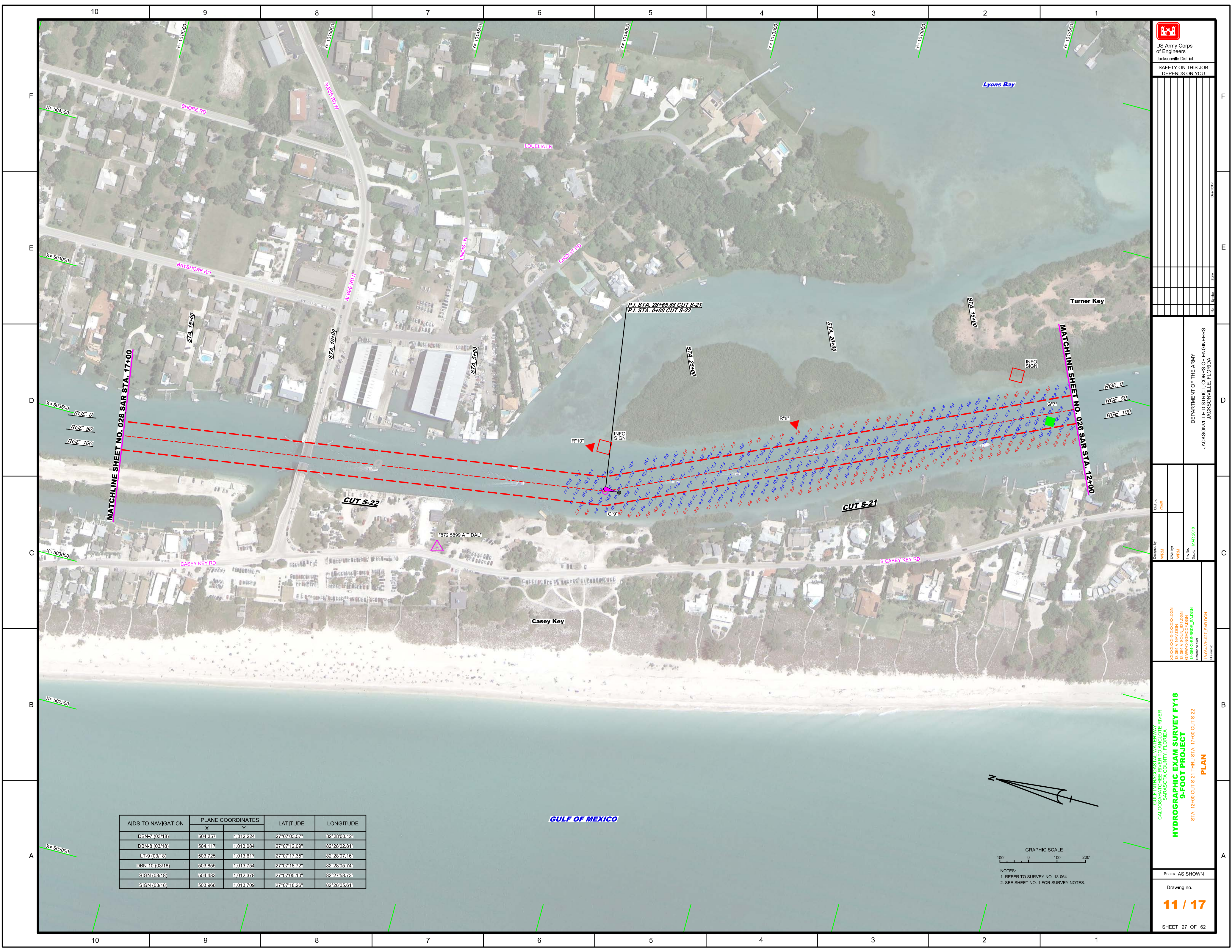
DEPARTMENT OF THE ARMY
 JACKSONVILLE DISTRICT, CORPS OF ENGINEERS
 JACKSONVILLE, FLORIDA


Drawn by: WRM
 Check by: GHR
 Date: APR 2018

XXXXXXXXXXXXXXXXXXXX
 XXXXXXXXCONDON
 XXXXXXXXAVDON
 XXXXXXXXWGTDON
 XXXXXXXXSB-RBR-SALDN
 XXXXXXXXPRZL-SAR-DGN

GULF INTRACOASTAL WATERWAY TO THE RIVER
 SARASOTA COUNTY, FLORIDA
HYDROGRAPHIC EXAM SURVEY FY16
9-FOOT PROJECT
 STA. 14+00 CUT S-17 THRU STA. 11+00 CUT S-19
PLAN

Scale: AS SHOWN





US Army Corps of Engineers
Jacksonville District

SAFETY ON THIS JOB
DEPENDS ON YOU

Dept. No.

Zone

DEPARTMENT OF THE ARMY
JACKSONVILLE DISTRICT, CORPS OF ENGINEERS
JACKSONVILLE, FLORIDA

Checked By: GHR

Designed By: WRM

Drawn By: WRM

File No. MAR 2018

Reference Files:
XXXXXXXXXXXXXXXXX.DGN
R6666AAV.DGN
R6666AAG.DGN
R6666AGC.DGN
R6666AAS.DGN
R6666AAT.SAR.DGN
R6666AAZ.SAR.DGN

GULF INTRACOASTAL WATERWAY - RIVER
SARASOTA COUNTY, FLORIDA

HYDROGRAPHIC EXAM SURVEY FY18
9-FOOT PROJECT

STA. 12+00 CUT S-21 THRU STA. 17+00 CUT S-22

PLAN

AIDS TO NAVIGATION	PLANE COORDINATES		LATITUDE	LONGITUDE
	X	Y		
DBN-7 (03/18)	504357	11012224	27°07'03.57"	82°28'00.12"
DBN-8 (03/18)	504117	11013084	27°07'12.09"	82°28'02.81"
LT-9 (03/18)	503725	11013617	27°07'17.35"	82°28'07.16"
DBN-10 (03/18)	503855	11013754	27°07'18.72"	82°28'05.74"
SIGN (03/18)	504483	11012376	27°07'05.10"	82°27'58.73"
SIGN (03/18)	503966	11013709	27°07'18.26"	82°28'05.61"

GULF OF MEXICO

GRAPHIC SCALE

100' 0 100' 200'

NOTES:
1. REFER TO SURVEY NO. 18-064.
2. SEE SHEET NO. 1 FOR SURVEY NOTES.

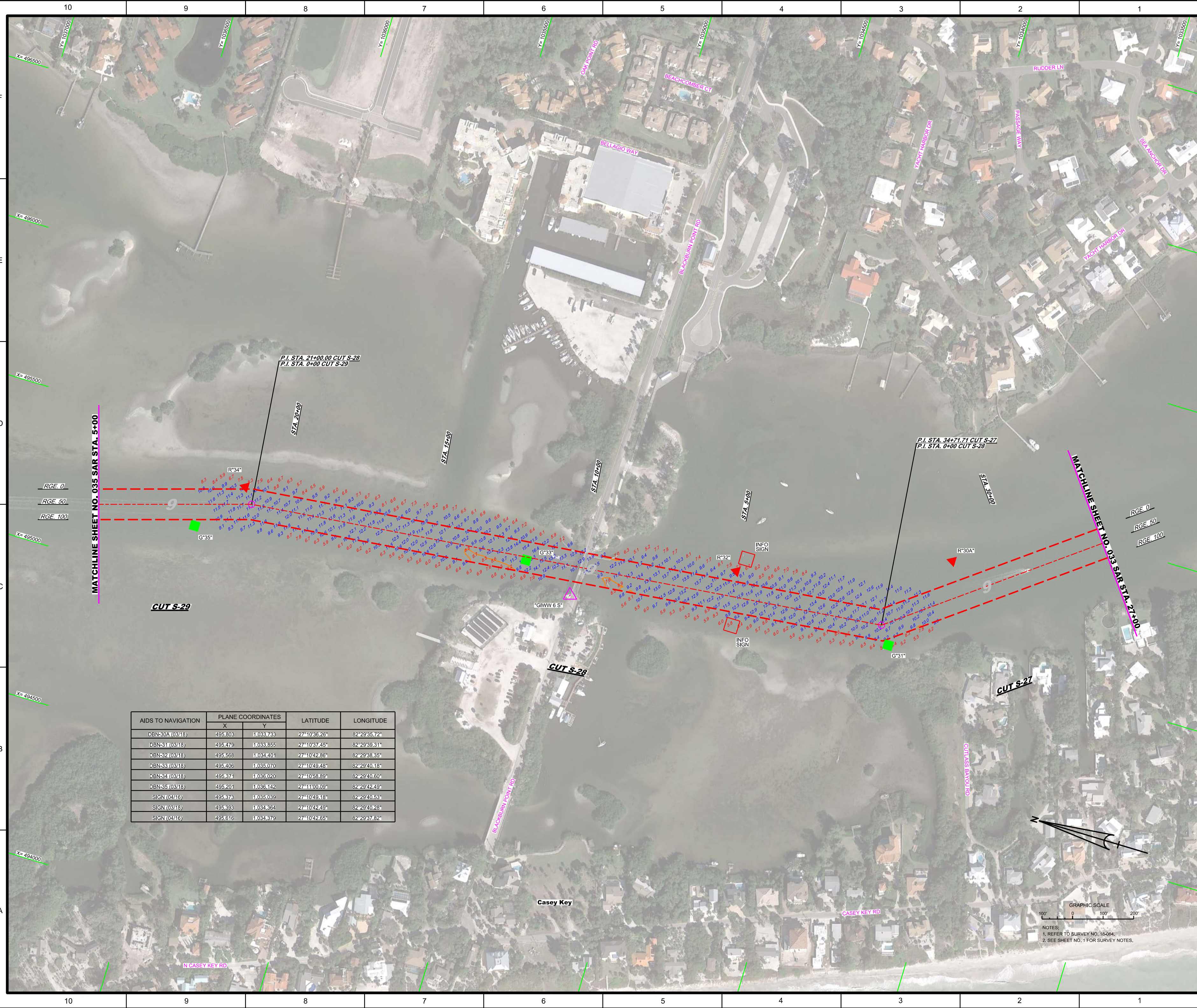
Scale: AS SHOWN

Drawing no.

11 / 17

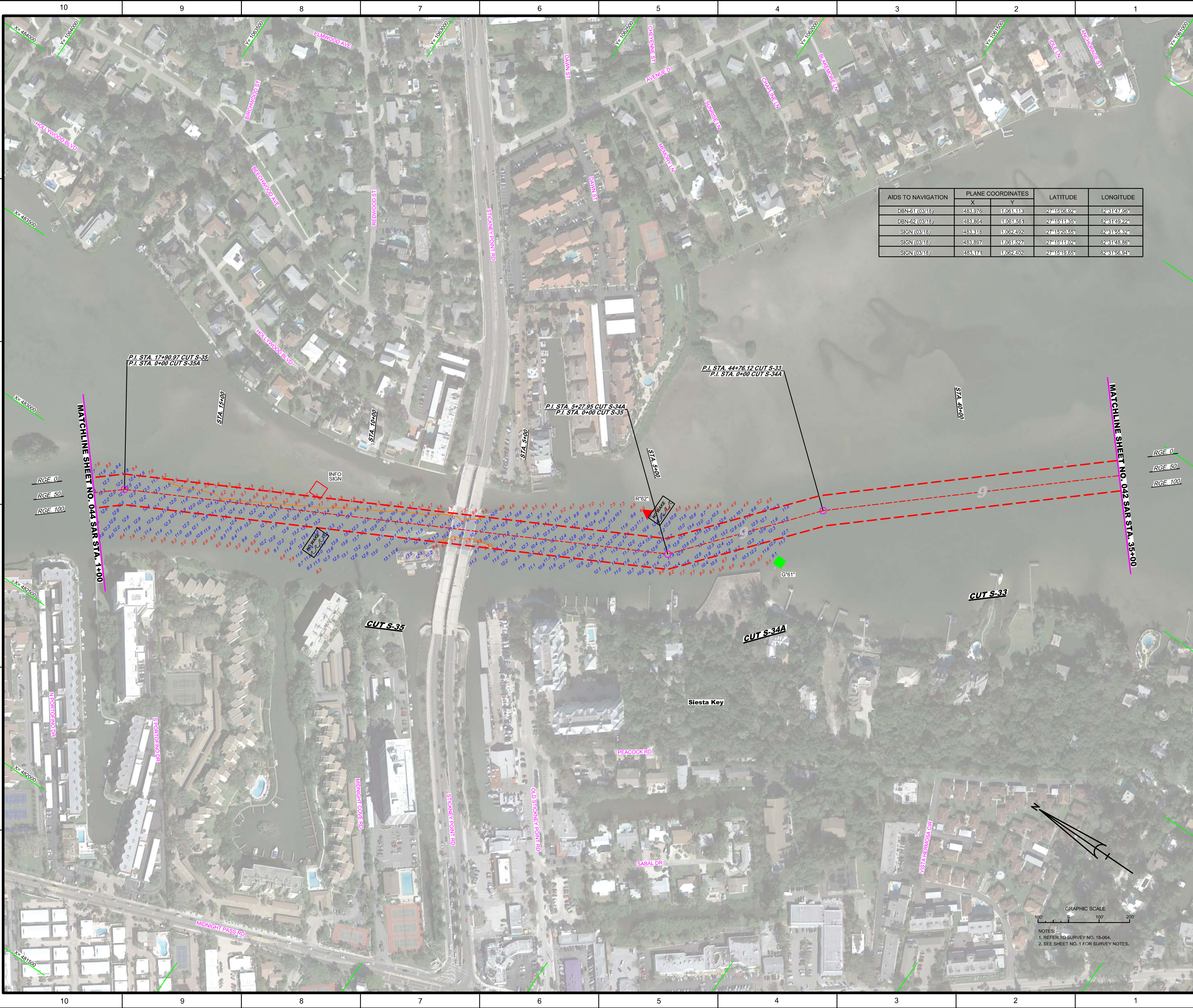
SHEET 27 OF 62

AIDS TO NAVIGATION	PLANE COORDINATES		LATITUDE	LONGITUDE
	X	Y		
DBN-7 (03/18)	504357	11012224	27°07'03.57"	82°28'00.12"
DBN-8 (03/18)	504117	11013084	27°07'12.09"	82°28'02.81"
LT-9 (03/18)	503725	11013617	27°07'17.35"	82°28'07.16"
DBN-10 (03/18)	503855	11013754	27°07'18.72"	82°28'05.74"
SIGN (03/18)	504483	11012376	27°07'05.10"	82°27'58.73"
SIGN (03/18)	503966	11013709	27°07'18.26"	82°28'05.61"



AIDS TO NAVIGATION	PLANE COORDINATES		LATITUDE	LONGITUDE
	X	Y		
DBN-30A (0318)	495.803	11033.733	27°10'38.26"	82°29'35.72"
DBN-31 (0318)	495.479	11033.855	27°10'37.45"	82°29'39.31"
DBN-32 (0318)	495.558	11034.401	27°10'42.86"	82°29'38.35"
DBN-33 (0318)	495.406	11035.070	27°10'49.46"	82°29'40.18"
DBN-34 (0318)	495.374	11035.020	27°10'58.89"	82°29'40.50"
DBN-35 (0318)	495.201	11035.142	27°11'00.09"	82°29'42.49"
SIGN (0416)	495.376	11035.039	27°10'49.16"	82°29'40.53"
SIGN (0318)	495.393	11034.364	27°10'42.59"	82°29'40.28"
SIGN (0416)	495.616	11034.379	27°10'42.65"	82°29'37.62"

GRAPHIC SCALE
 100' 0 100' 200'
 NOTES:
 1. REFER TO SURVEY NO. 18-004;
 2. SEE SHEET NO. 1 FOR SURVEY NOTES.




AIDS TO NAVIGATION	PLANE COORDINATES		LATITUDE	LONGITUDE
	X	Y		
DBN-61 (03/18)	483.976	1,061,113	27°15'05.92"	82°31'47.86"
DBN-62 (03/18)	483.864	1,061,561	27°15'11.35"	82°31'49.22"
SIGN (03/18)	483.318	1,062,492	27°15'20.55"	82°31'55.32"
SIGN (03/18)	483.897	1,061,527	27°15'11.02"	82°31'48.86"
SIGN (03/18)	483.171	1,062,402	27°15'19.65"	82°31'56.94"

P.I. STA. 17+90.97 CUT S-35
P.I. STA. 0+00 CUT S-35A

P.I. STA. 44+76.12 CUT S-33
P.I. STA. 0+00 CUT S-34A

P.I. STA. 5+27.95 CUT S-34A
P.I. STA. 0+00 CUT S-35



US Army Corps of Engineers
Jacksonville District

SAFETY ON THIS JOB DEPENDS ON YOU

DEPARTMENT OF THE ARMY
JACKSONVILLE DISTRICT, CORPS OF ENGINEERS
JACKSONVILLE, FLORIDA

Drawn by: GHR
Checked by: GHR
Designed by: WRM
DWG No: WRM
File No: WRM
Date: MAR 2018
Reference files:
18-064-AV.DGN
18-064-COND.DGN
18-064-CW.DGN
18-064-ES-BRDR_SALDN
18-064-HAHL_SAR.DGN

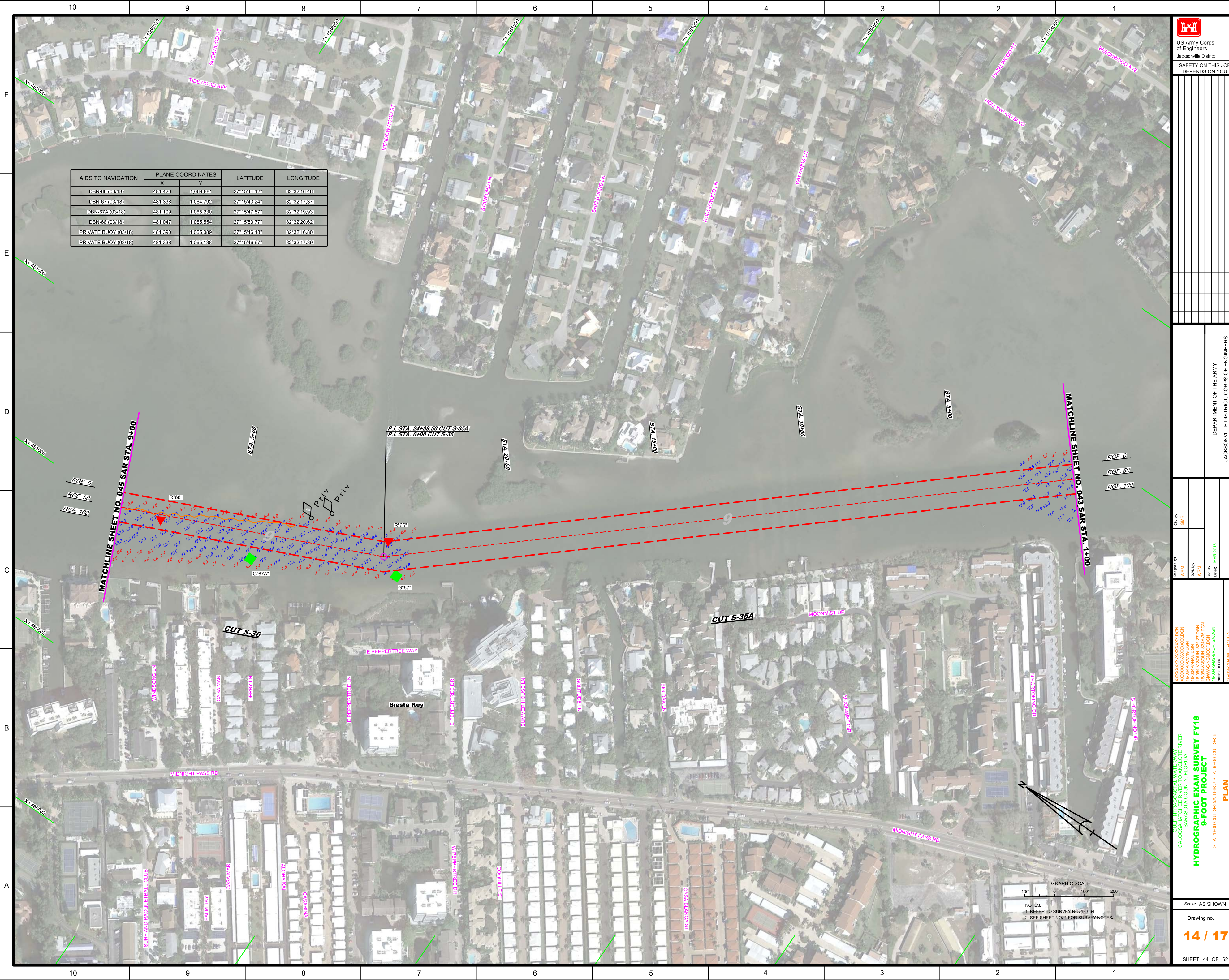
HYDROGRAPHIC EXAM SURVEY FY18
9-FOOT PROJECT
PLAN

STA. 35+00 CUT S-33 THRU STA. 1+00 CUT S-35A

Scale: AS SHOWN
Drawing no. **13 / 17**
SHEET 43 OF 62

GRAPHIC SCALE
100' 0' 100' 200'

NOTES:
1. REFER TO SURVEY NO. 18-064.
2. SEE SHEET NO. 1 FOR SURVEY NOTES.




AIDS TO NAVIGATION	PLANE COORDINATES		LATITUDE	LONGITUDE
	X	Y		
DBN-66 (03/18)	481.420	1,064.881	27°15'44.12"	82°32'16.46"
DBN-67 (03/18)	481.338	1,064.792	27°15'43.24"	82°32'17.37"
DBN-67A (03/18)	481.109	1,065.230	27°15'47.57"	82°32'19.93"
DBN-68 (03/18)	481.047	1,065.554	27°15'50.77"	82°32'20.62"
PRIVATE BUOY (03/18)	481.390	1,065.089	27°15'46.18"	82°32'16.80"
PRIVATE BUOY (03/18)	481.338	1,065.138	27°15'46.67"	82°32'17.39"

RGE 0
RGE 50
RGE 100

RGE 0
RGE 50
RGE 100

GRAPHIC SCALE
100' 0 100' 200'
NOTES:
1. REFER TO SURVEY NO. 18-064.
2. SEE SHEET NO. 1 FOR SURVEY NOTES.

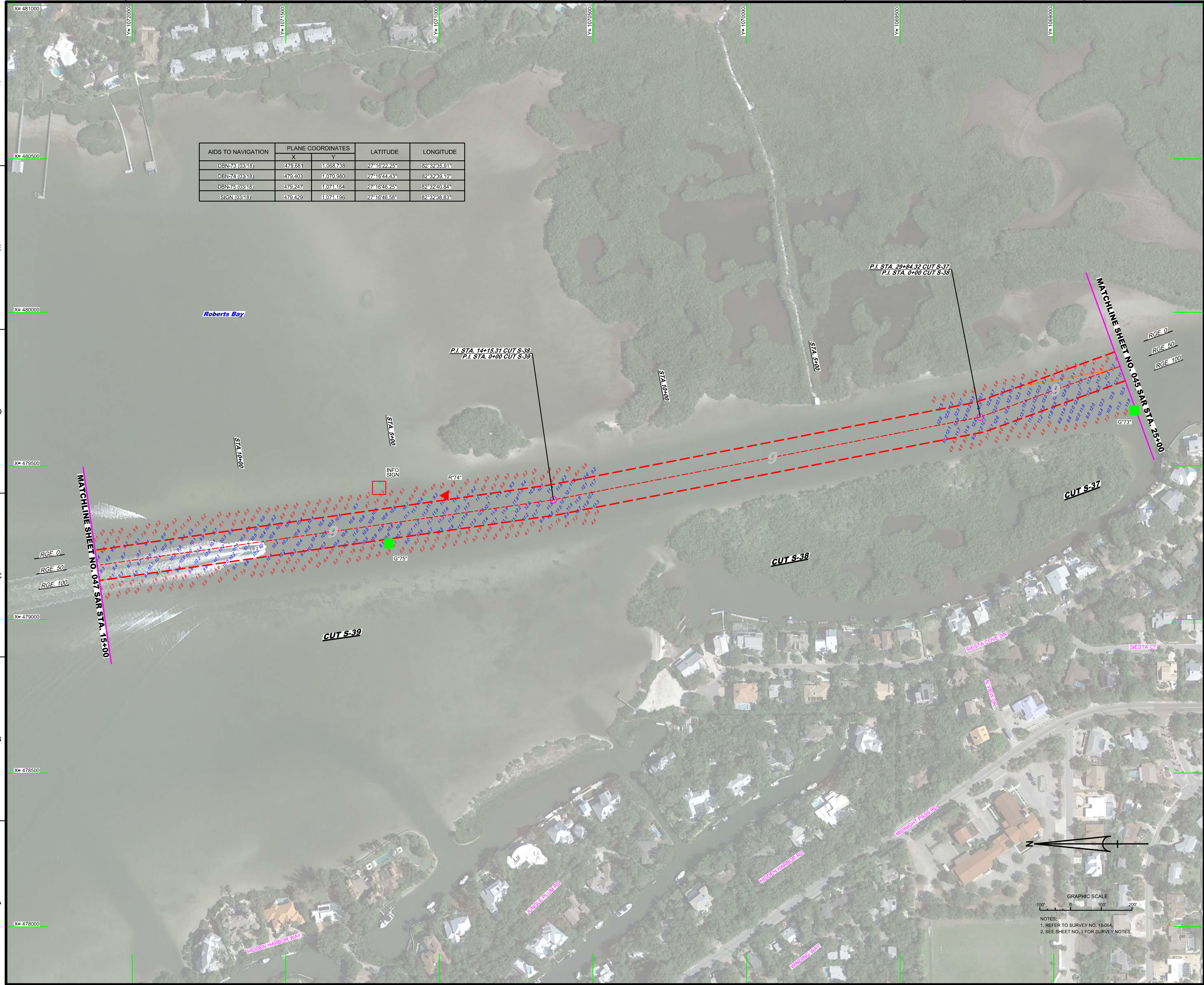


US Army Corps
of Engineers
Jacksonville District

SAFETY ON THIS JOB
DEPENDS ON YOU

Client:	DEPARTMENT OF THE ARMY	Project:	JACKSONVILLE DISTRICT, CORPS OF ENGINEERS	Location:	JACKSONVILLE, FLORIDA	Scale:	AS SHOWN	Sheet:	14 / 17
Drawn by:	WRM	Checked by:	WRM	Date:	MAR 2018	Project No.:	18-064	Sheet No.:	44 OF 62
Designed by:	WRM	Reviewed by:	WRM	Project Name:	GULF INTRACOSTAL WATERWAY TO THE RIVER	Location:	SARASOTA COUNTY, FLORIDA	Project Title:	HYDROGRAPHIC EXAM SURVEY FY18
Drawn by:	WRM	Checked by:	WRM	Project Name:	9-FOOT PROJECT	Location:	STA. 1+00 CUT S-35A THRU STA. 9+00 CUT S-36	Project Title:	PLAN
Designed by:	WRM	Reviewed by:	WRM	Project Name:	18-064-HYDRA-SAR.DGN	Location:	18-064-HYDRA-SAR.DGN	Project Title:	18-064-HYDRA-SAR.DGN

AIDS TO NAVIGATION	PLANE COORDINATES		LATITUDE	LONGITUDE
	X	Y		
DBN-73 (03/18)	479,681	1,068,738	27°16'22.25"	82°32'35.91"
DBN-74 (03/18)	479,403	1,070,980	27°16'44.43"	82°32'39.10"
DBN-75 (03/18)	479,247	1,071,164	27°16'46.25"	82°32'40.84"
SIGN (03/18)	479,429	1,071,196	27°16'46.58"	82°32'38.83"



US Army Corps of Engineers
Jacksonville District
SAFETY ON THIS JOB
DEPENDS ON YOU

Checked By: GHR
Designed By: WRM
Drawn By: WRM
File Name: 18-064-HYDRA_SAR.DGN
Revision: 03
Date: MAR 2018

DEPARTMENT OF THE ARMY
JACKSONVILLE DISTRICT, CORPS OF ENGINEERS
JACKSONVILLE, FLORIDA

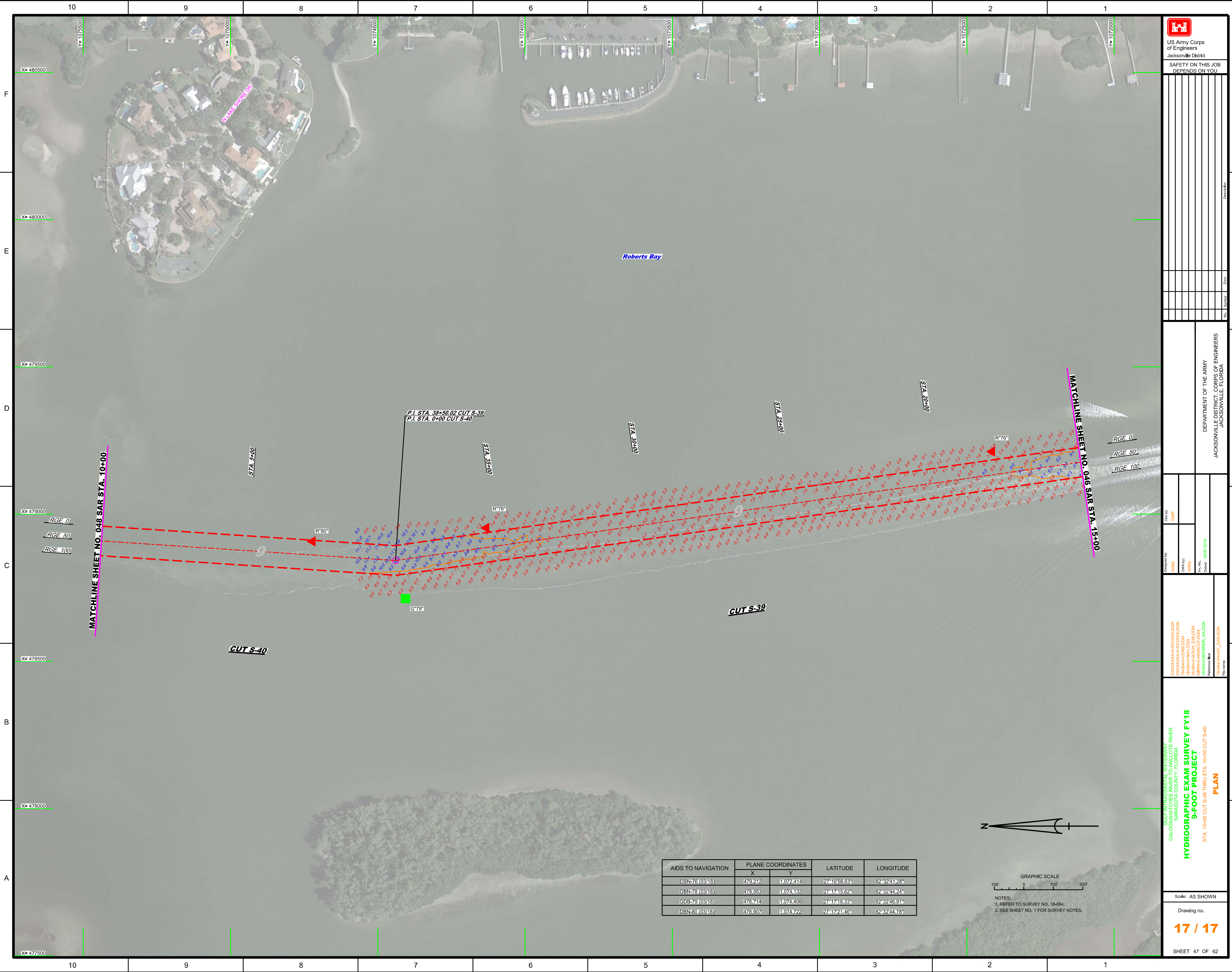
XXXXXXXXXXXXXXXXXXXX
18-064-HYDRA_SAR.DGN
18-064-HYDRA_SAR.DGN
18-064-HYDRA_SAR.DGN
18-064-HYDRA_SAR.DGN
18-064-HYDRA_SAR.DGN


GULF INTRACOSTAL WATERWAY PROJECT
SARASOTA COUNTY, FLORIDA
HYDROGRAPHIC EXAM SURVEY FY18
9-FOOT PROJECT
STA. 25+00 CUT S-37 THRU STA. 15+00 CUT S-39
PLAN

Scale: AS SHOWN
Drawing no. **16 / 17**
SHEET 46 OF 62

NOTES:
1. REFER TO SURVEY NO. 18-064;
2. SEE SHEET NO. 1 FOR SURVEY NOTES.

GRAPHIC SCALE
100' 0 100' 200'





 US Army Corps of Engineers
 Jacksonville District
 SAFETY ON THIS JOB
 DEPENDS ON YOU

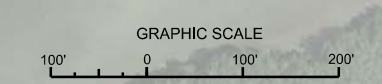
DEPARTMENT OF THE ARMY
 JACKSONVILLE DISTRICT, CORPS OF ENGINEERS
 JACKSONVILLE, FLORIDA

Check by: GHR
 Designed by: WRM
 Drawn by: WRM
 File No: MAR 2018
 Date: MAR 2018

GULF INTRACOSTAL WATERWAY
 CALOOCAN RIVER
 SARASOTA COUNTY, FLORIDA
HYDROGRAPHIC EXAM SURVEY FY18
9-FOOT PROJECT
 STA. 15+00 CUT S-39 THRU STA. 10+00 CUT S-40
PLAN

Scale: AS SHOWN
 Drawing no.
17 / 17
 SHEET 47 OF 62

AIDS TO NAVIGATION	PLANE COORDINATES		LATITUDE	LONGITUDE
	X	Y		
DBN-76(0318)	479242	1072414	27°16'58.63"	82°32'41.28"
DBN-78(0318)	478953	1074132	27°17'15.82"	82°32'44.24"
CDB-79(0318)	478744	1074406	27°17'18.33"	82°32'46.91"
DBN-80(0318)	478507	1074722	27°17'21.46"	82°32'44.78"



NOTES:
 1. REFER TO SURVEY NO. 18-064.
 2. SEE SHEET NO. 1 FOR SURVEY NOTES.