

10 9 8 7 6 5 4 3 2 1

AIDS TO NAVIGATION	PLANE COORDINATES		LATITUDE	LONGITUDE
	X	Y		
DBN-46 (08/18)	439.819	1.874446	29°29'17.54"	81°40'48.03"
LT-48 (08/18)	440.987	1.873220	29°29'05.47"	81°40'34.74"
LT-50 (08/18)	440.761	1.869601	29°28'29.65"	81°40'37.18"
LT-52 (08/18)	437.674	1.867806	29°28'11.67"	81°41'19.03"
LT-53 (08/18)	437.833	1.865244	29°27'46.03"	81°41'09.90"
DBN-53A (08/18)	437.608	1.863555	29°27'29.61"	81°41'10.07"
DBN-53B (08/18)	437.795	1.861856	29°27'13.18"	81°41'10.11"
DBN-54 (08/18)	437.728	1.865040	29°27'44.30"	81°41'11.07"
LT-55 (08/18)	437.811	1.860447	29°26'58.84"	81°41'09.83"
DBN-55A (08/18)	437.808	1.858913	29°26'43.65"	81°41'09.75"
DBN-55B (08/18)	437.780	1.857382	29°26'28.50"	81°41'09.97"
DBN-56 (08/18)	437.694	1.860393	29°26'58.30"	81°41'11.15"
DBN-57 (08/18)	437.819	1.855999	29°26'14.81"	81°41'09.44"
LT-58 (08/18)	437.709	1.855726	29°26'12.10"	81°41'10.66"
LT-59 (08/18)	438.719	1.854747	29°26'02.47"	81°40'59.18"
NUN BUOY-60 (08/18)	441.137	1.852914	29°25'54.36"	81°40'31.78"
CAN BUOY-61 (08/18)	442.474	1.853768	29°25'52.99"	81°40'16.88"
LT-61A (08/18)	443.386	1.853589	29°25'51.27"	81°40'08.33"
DBN-62 (08/18)	446.426	1.852862	29°25'42.26"	81°39'31.89"
LT-63 (08/18)	446.408	1.852951	29°25'45.13"	81°39'32.12"
DBN-63A (08/18)	447.682	1.850498	29°25'20.92"	81°39'17.55"
DBN-64 (08/18)	447.540	1.850484	29°25'20.77"	81°39'19.15"
LT-65 (08/18)	448.152	1.849483	29°25'10.89"	81°39'12.17"
LT-67 (08/18)	446.864	1.847463	29°24'50.82"	81°39'26.60"

MATCHLINE SHEET NO. 012

MATCHLINE SHEET NO. 014

US Army Corps of Engineers
Jacksonville District

SAFETY ON THIS JOB
DEPENDS ON YOU

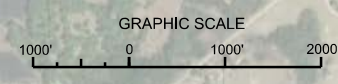
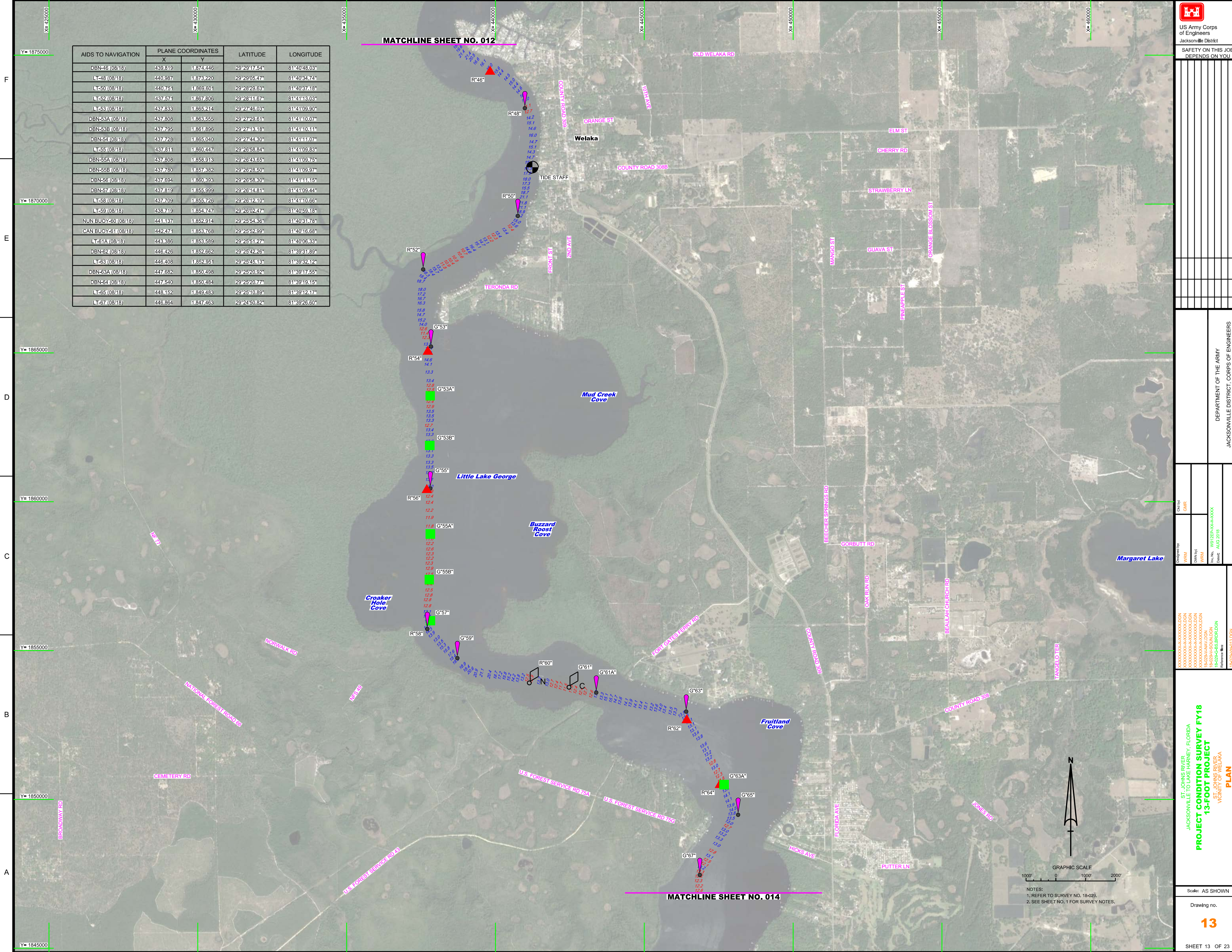
DEPARTMENT OF THE ARMY
JACKSONVILLE DISTRICT, CORPS OF ENGINEERS
JACKSONVILLE, FLORIDA

ST. JOHNS RIVER
JACKSONVILLE TO LAKE HARNLEY, FLORIDA
PROJECT CONDITION SURVEY FY18
13-FOOT PROJECT
ST. JOHNS RIVER
COUNTY OF WELAKA
PLAN

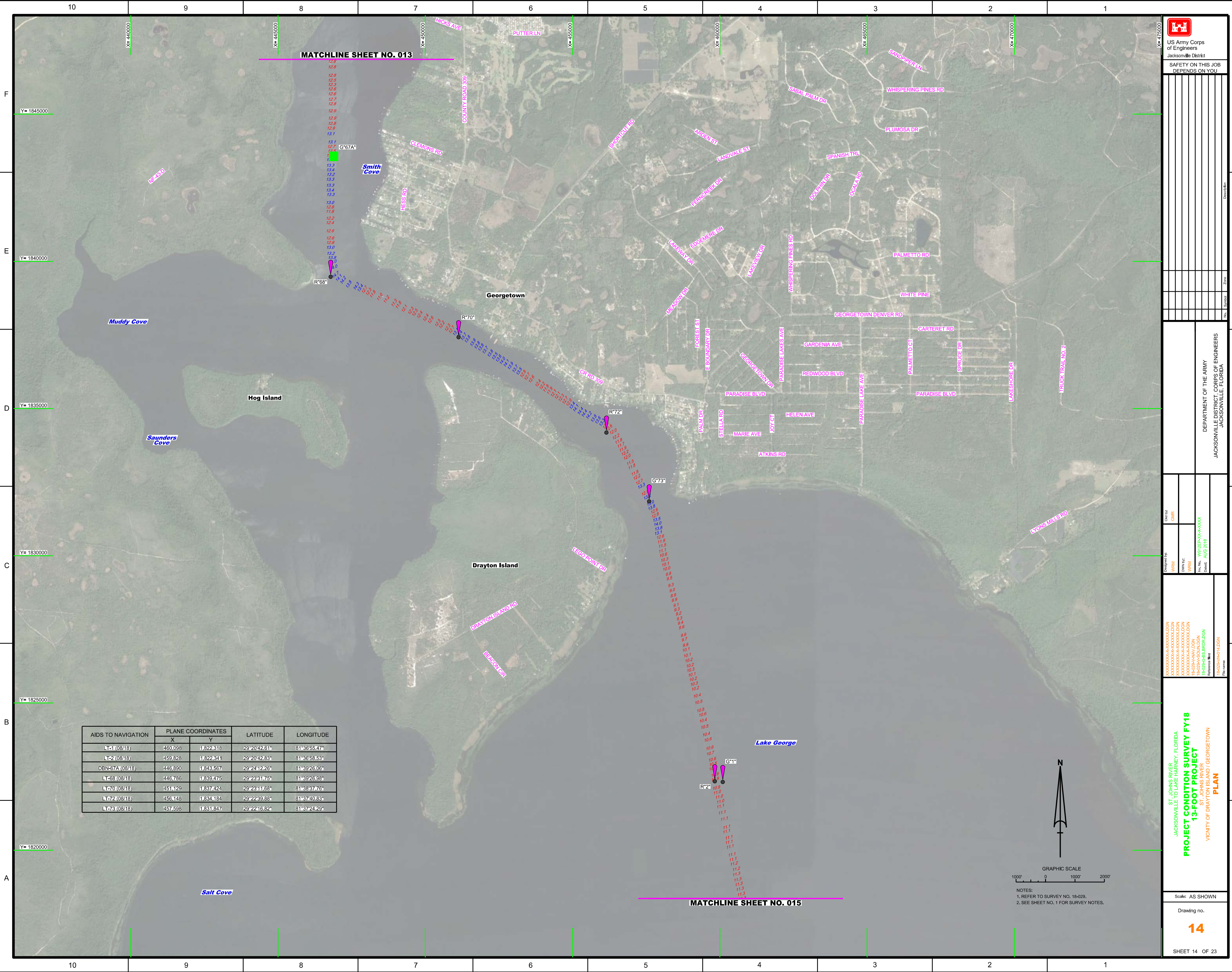
Scale: AS SHOWN

Drawing no.
13

SHEET 13 OF 23



NOTES:
1. REFER TO SURVEY NO. 18-029.
2. SEE SHEET NO. 1 FOR SURVEY NOTES.



US Army Corps of Engineers
Jacksonville District

SAFETY ON THIS JOB
DEPENDS ON YOU

DEPARTMENT OF THE ARMY
JACKSONVILLE DISTRICT, CORPS OF ENGINEERS
JACKSONVILLE, FLORIDA

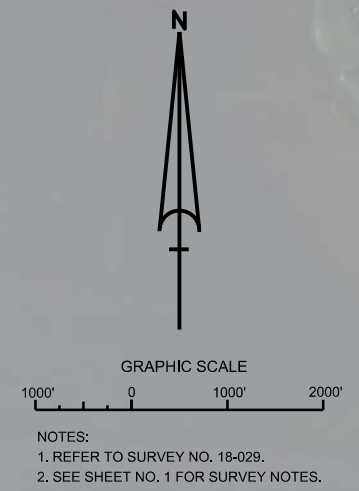
ST. JOHNS RIVER
JACKSONVILLE TO LAKE HARNEY, FLORIDA
PROJECT CONDITION SURVEY FY18
13-FOOT PROJECT
VICINITY OF DRAYTON ISLAND / GEORGETOWN
PLAN

Scale: AS SHOWN

Drawing no.
14

SHEET 14 OF 23

AIDS TO NAVIGATION	PLANE COORDINATES		LATITUDE	LONGITUDE
	X	Y		
LT-1 (08/18)	460,098	1,822,318	29°20'42.61"	81°36'55.47"
LT-2 (08/18)	459,828	1,822,341	29°20'42.83"	81°36'58.53"
DBN-67A (08/18)	446,890	1,843,567	29°24'12.26"	81°39'28.06"
LT-68 (08/18)	446,786	1,839,475	29°23'31.76"	81°39'28.98"
LT-70 (08/18)	451,129	1,837,424	29°23'11.68"	81°38'37.76"
LT-72 (08/18)	456,148	1,834,184	29°22'39.88"	81°37'40.88"
LT-73 (08/18)	457,698	1,831,847	29°22'18.82"	81°37'24.29"





US Army Corps of Engineers
Jacksonville District

SAFETY ON THIS JOB
DEPENDS ON YOU

No.	Symbol	Zone	Description

DEPARTMENT OF THE ARMY
JACKSONVILLE DISTRICT, CORPS OF ENGINEERS
JACKSONVILLE, FLORIDA

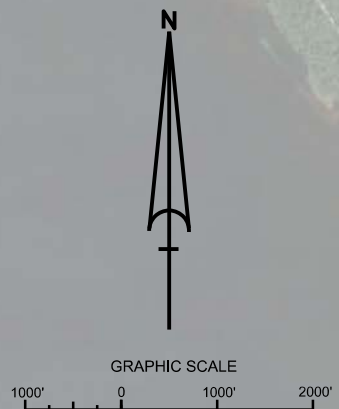
Drawn by: WRM	Check by: GHR
Designed by: WRM	
Date: AUG 2018	

XXXXXXXXXXXXXXXXXXXX	XXXXXXXXXXXXXXXXXXXX
XXXXXXXXXXXXXXXXXXXX	XXXXXXXXXXXXXXXXXXXX
XXXXXXXXXXXXXXXXXXXX	XXXXXXXXXXXXXXXXXXXX
XXXXXXXXXXXXXXXXXXXX	XXXXXXXXXXXXXXXXXXXX
XXXXXXXXXXXXXXXXXXXX	XXXXXXXXXXXXXXXXXXXX
XXXXXXXXXXXXXXXXXXXX	XXXXXXXXXXXXXXXXXXXX
XXXXXXXXXXXXXXXXXXXX	XXXXXXXXXXXXXXXXXXXX
XXXXXXXXXXXXXXXXXXXX	XXXXXXXXXXXXXXXXXXXX
XXXXXXXXXXXXXXXXXXXX	XXXXXXXXXXXXXXXXXXXX
XXXXXXXXXXXXXXXXXXXX	XXXXXXXXXXXXXXXXXXXX
XXXXXXXXXXXXXXXXXXXX	XXXXXXXXXXXXXXXXXXXX
XXXXXXXXXXXXXXXXXXXX	XXXXXXXXXXXXXXXXXXXX
XXXXXXXXXXXXXXXXXXXX	XXXXXXXXXXXXXXXXXXXX
XXXXXXXXXXXXXXXXXXXX	XXXXXXXXXXXXXXXXXXXX
XXXXXXXXXXXXXXXXXXXX	XXXXXXXXXXXXXXXXXXXX

ST. JOHNS RIVER
JACKSONVILLE TO LAKE HARNETT, FLORIDA
PROJECT CONDITION SURVEY FY18
ST. JOHNS RIVER
CENTERLINE THROUGH LAKE GEORGE
PLAN

Scale: AS SHOWN
Drawing no. **15**
SHEET 15 OF 23

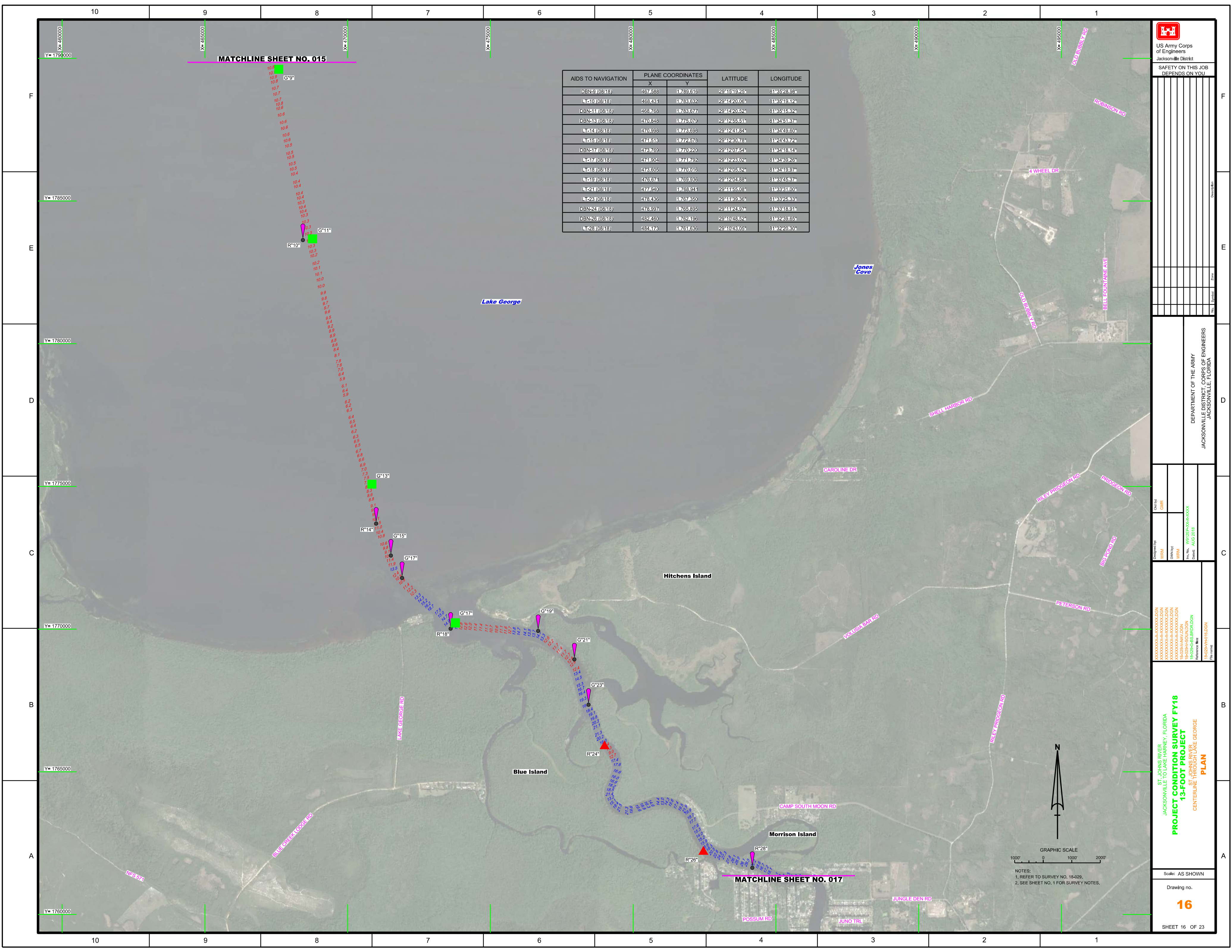
AIDS TO NAVIGATION	PLANE COORDINATES		LATITUDE	LONGITUDE
	X	Y		
L-23 (08/18)	461574	1815769	29°19'47.86"	81°38'38.44"
DBN-4 (08/18)	462666	1808337	29°18'29.29"	81°36'25.67"
L-25 (08/18)	462969	1808349	29°18'04.11"	81°36'22.25"
DBN-5 (08/18)	465305	1797834	29°16'55.85"	81°35'55.20"
L-27 (08/18)	465580	1797839	29°16'36.24"	81°35'13.94"



NOTES:
1. REFER TO SURVEY NO. 18-029.
2. SEE SHEET NO. 1 FOR SURVEY NOTES.

MATCHLINE SHEET NO. 104

MATCHLINE SHEET NO. 106



AIDS TO NAVIGATION	PLANE COORDINATES		LATITUDE	LONGITUDE
	X	Y		
DBN-9 (08/18)	467,588	17769,616	29°15'19.25"	81°35'28.98"
DBN-10 (08/18)	468,431	17783,632	29°14'20.05"	81°35'19.12"
DBN-11 (08/18)	468,768	17783,677	29°14'20.52"	81°35'15.32"
DBN-13 (08/18)	470,848	17775,079	29°12'55.51"	81°34'51.87"
DBN-14 (08/18)	470,898	17773,698	29°12'41.84"	81°34'49.60"
DBN-15 (08/18)	471,518	17772,576	29°12'30.76"	81°34'48.72"
DBN-17 (08/18)	473,789	17770,220	29°12'07.54"	81°34'18.14"
DBN-17 (08/18)	474,804	17771,762	29°12'23.02"	81°34'39.26"
DBN-18 (08/18)	473,605	17770,016	29°12'05.62"	81°34'19.97"
DBN-19 (08/18)	476,674	17769,896	29°12'04.88"	81°34'45.87"
DBN-21 (08/18)	477,820	17769,941	29°11'55.03"	81°34'31.00"
DBN-23 (08/18)	478,436	17767,650	29°11'39.86"	81°34'25.83"
DBN-24 (08/18)	478,997	17765,895	29°11'24.97"	81°34'18.91"
DBN-26 (08/18)	482,460	17762,105	29°10'43.52"	81°34'29.65"
DBN-28 (08/18)	484,176	17761,686	29°10'43.05"	81°34'22.80"

US Army Corps of Engineers
Jacksonville District

SAFETY ON THIS JOB DEPENDS ON YOU

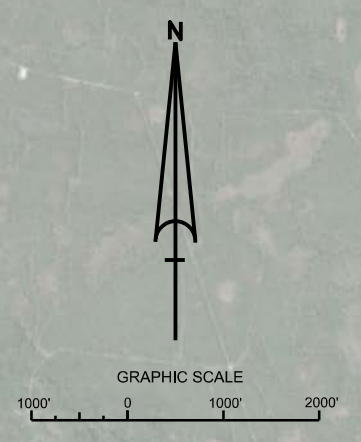
DEPARTMENT OF THE ARMY
JACKSONVILLE DISTRICT, CORPS OF ENGINEERS
JACKSONVILLE, FLORIDA

PROJECT CONDITION SURVEY FY18
13-FOOT PROJECT
ST. JOHNS RIVER
CENTERLINE THROUGH LAKE GEORGE
PLAN

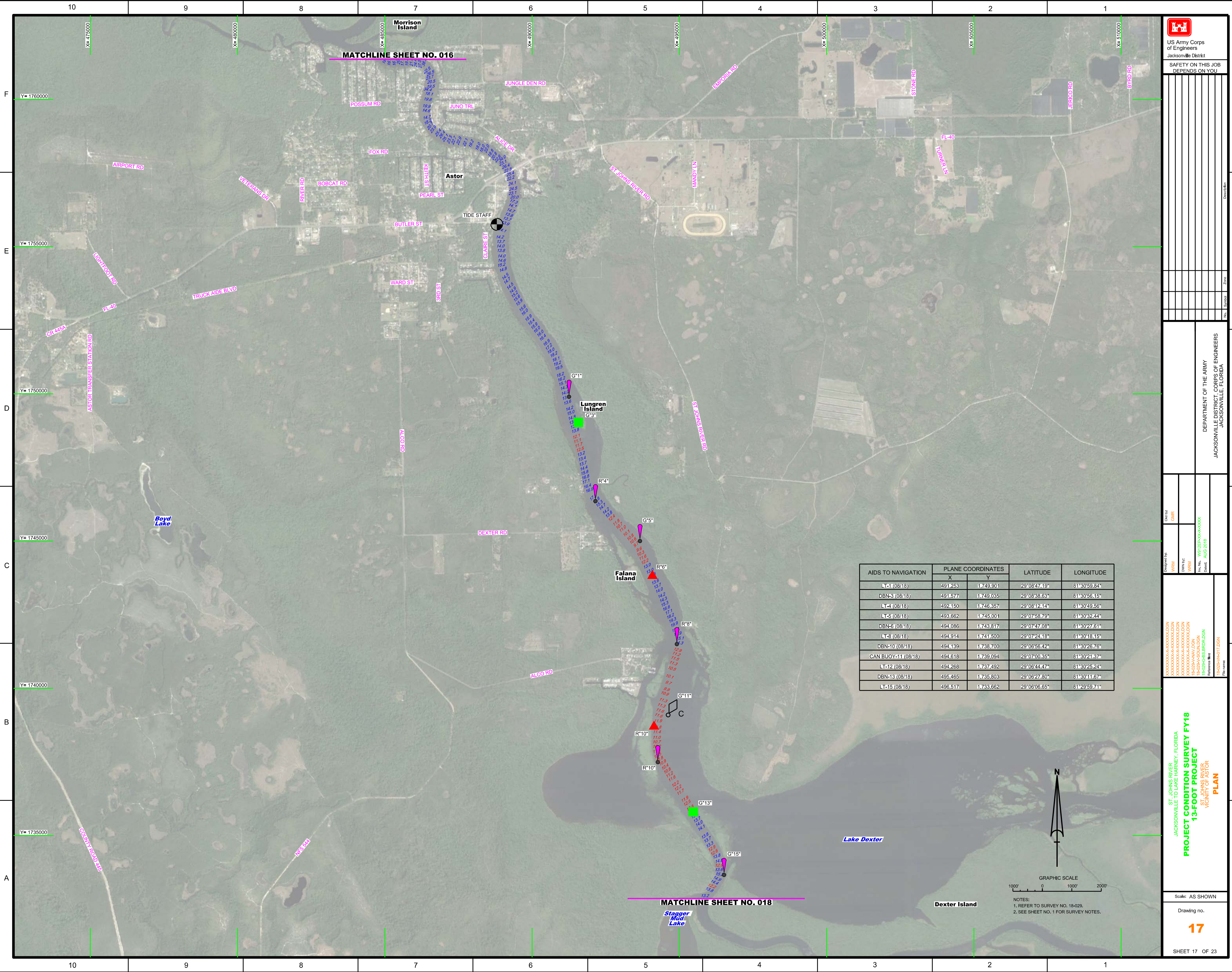
Scale: AS SHOWN

Drawing no.
16

SHEET 16 OF 23



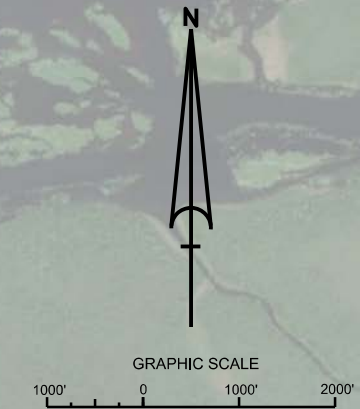
NOTES:
1. REFER TO SURVEY NO. 184029.
2. SEE SHEET NO. 1 FOR SURVEY NOTES.



MATCHLINE SHEET NO. 016

MATCHLINE SHEET NO. 018

AIDS TO NAVIGATION	PLANE COORDINATES		LATITUDE	LONGITUDE
	X	Y		
LT-1 (08/18)	491,253	1749,901	29°08'47.19"	81°30'59.84"
DBN-3 (08/18)	491,577	1749,035	29°08'38.63"	81°30'56.15"
LT-4 (08/18)	492,150	1746,357	29°08'12.14"	81°30'49.56"
LT-5 (08/18)	493,662	1745,001	29°07'58.79"	81°30'32.44"
DBN-6 (08/18)	494,086	1743,817	29°07'47.05"	81°30'27.61"
LT-8 (08/18)	494,914	1741,500	29°07'24.18"	81°30'18.15"
DBN-10 (08/18)	494,139	1738,700	29°06'56.42"	81°30'26.76"
CAN BUOY-11 (08/18)	494,618	1739,094	29°07'00.35"	81°30'21.37"
LT-12 (08/18)	494,268	1737,492	29°06'44.47"	81°30'25.24"
DBN-13 (08/18)	495,465	1735,803	29°06'27.80"	81°30'11.67"
LT-15 (08/18)	496,517	1733,662	29°06'06.65"	81°29'59.71"



NOTES:
 1. REFER TO SURVEY NO. 18-029.
 2. SEE SHEET NO. 1 FOR SURVEY NOTES.

US Army Corps of Engineers
 Jacksonville District

SAFETY ON THIS JOB
 DEPENDS ON YOU

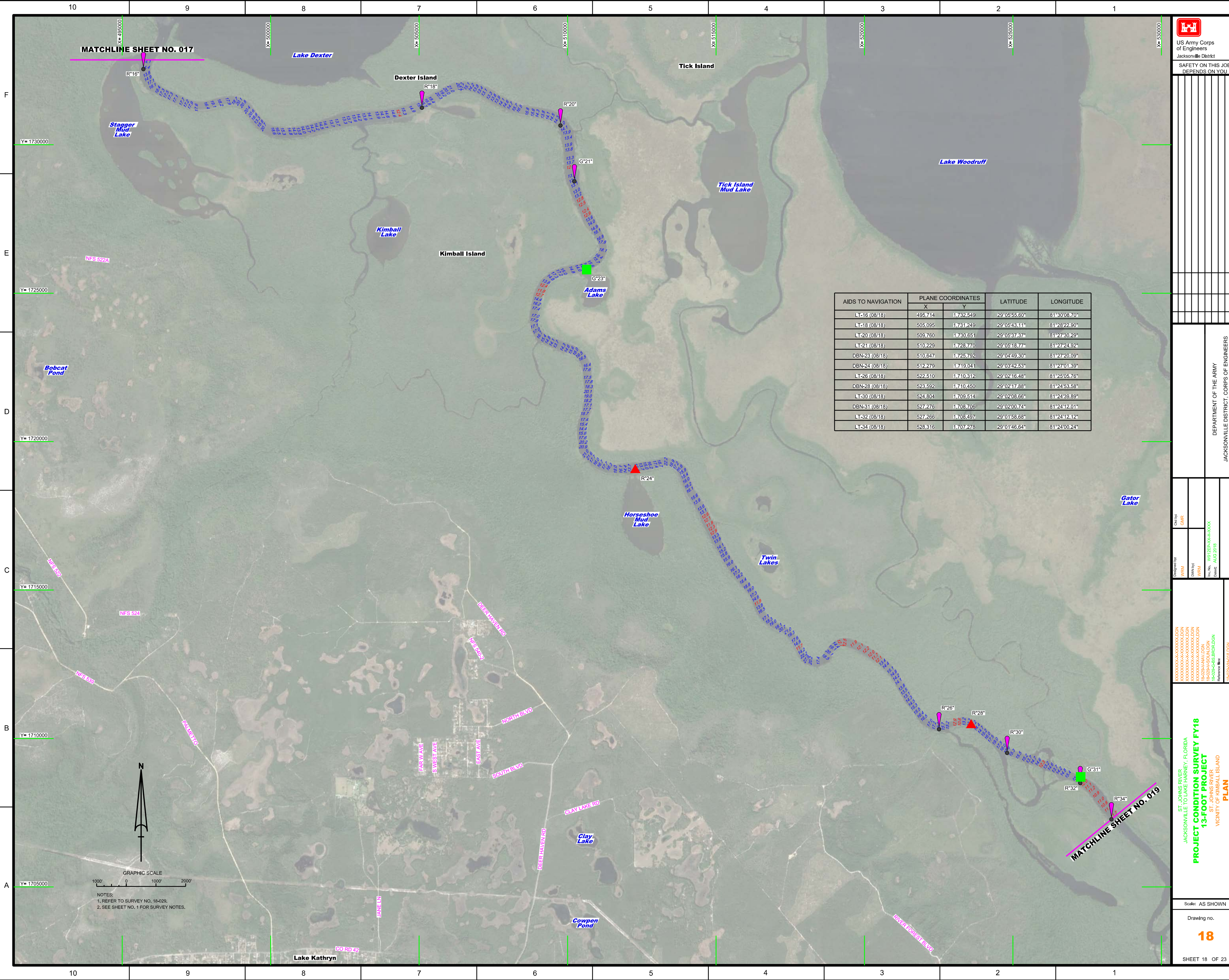
DEPARTMENT OF THE ARMY
 JACKSONVILLE DISTRICT, CORPS OF ENGINEERS
 JACKSONVILLE, FLORIDA

PROJECT CONDITION SURVEY FY18
 13-FOOT PROJECT
 ST. JOHNS RIVER
 VICINITY OF ASTOR
 PLAN

Scale: AS SHOWN

Drawing no.
17

SHEET 17 OF 23




MATCHLINE SHEET NO. 017

MATCHLINE SHEET NO. 019

AIDS TO NAVIGATION	PLANE COORDINATES		LATITUDE	LONGITUDE
	X	Y		
LT-16 (08/18)	495.714	1.732.549	29°05'55.60"	81°30'08.70"
LT-18 (08/18)	505.095	1.731.249	29°05'43.11"	81°28'22.90"
LT-20 (08/18)	509.760	1.730.651	29°05'37.37"	81°27'30.29"
LT-21 (08/18)	510.229	1.728.770	29°05'18.77"	81°27'24.92"
DBN-23 (08/18)	510.647	1.725.792	29°04'49.30"	81°27'20.09"
DBN-24 (08/18)	512.279	1.719.041	29°03'42.63"	81°27'01.39"
LT-26 (08/18)	522.510	1.710.312	29°02'16.48"	81°25'05.76"
DBN-28 (08/18)	523.592	1.710.450	29°02'17.88"	81°24'53.58"
LT-30 (08/18)	524.804	1.709.514	29°02'08.66"	81°24'39.89"
DBN-31 (08/18)	527.276	1.708.705	29°02'00.74"	81°24'12.01"
LT-32 (08/18)	527.266	1.708.497	29°01'58.68"	81°24'12.12"
LT-34 (08/18)	528.316	1.707.278	29°01'46.64"	81°24'00.24"

NOTES:
 1. REFER TO SURVEY NO. 18-029.
 2. SEE SHEET NO. 1 FOR SURVEY NOTES.



US Army Corps of Engineers
Jacksonville District

SAFETY ON THIS JOB DEPENDS ON YOU


DEPARTMENT OF THE ARMY
JACKSONVILLE DISTRICT, CORPS OF ENGINEERS
JACKSONVILLE, FLORIDA

PROJECT CONDITION SURVEY FY18
13-FOOT PROJECT
VICINITY OF KIMBALL ISLAND
PLAN

Scale: AS SHOWN

Drawing no.
18

SHEET 18 OF 23

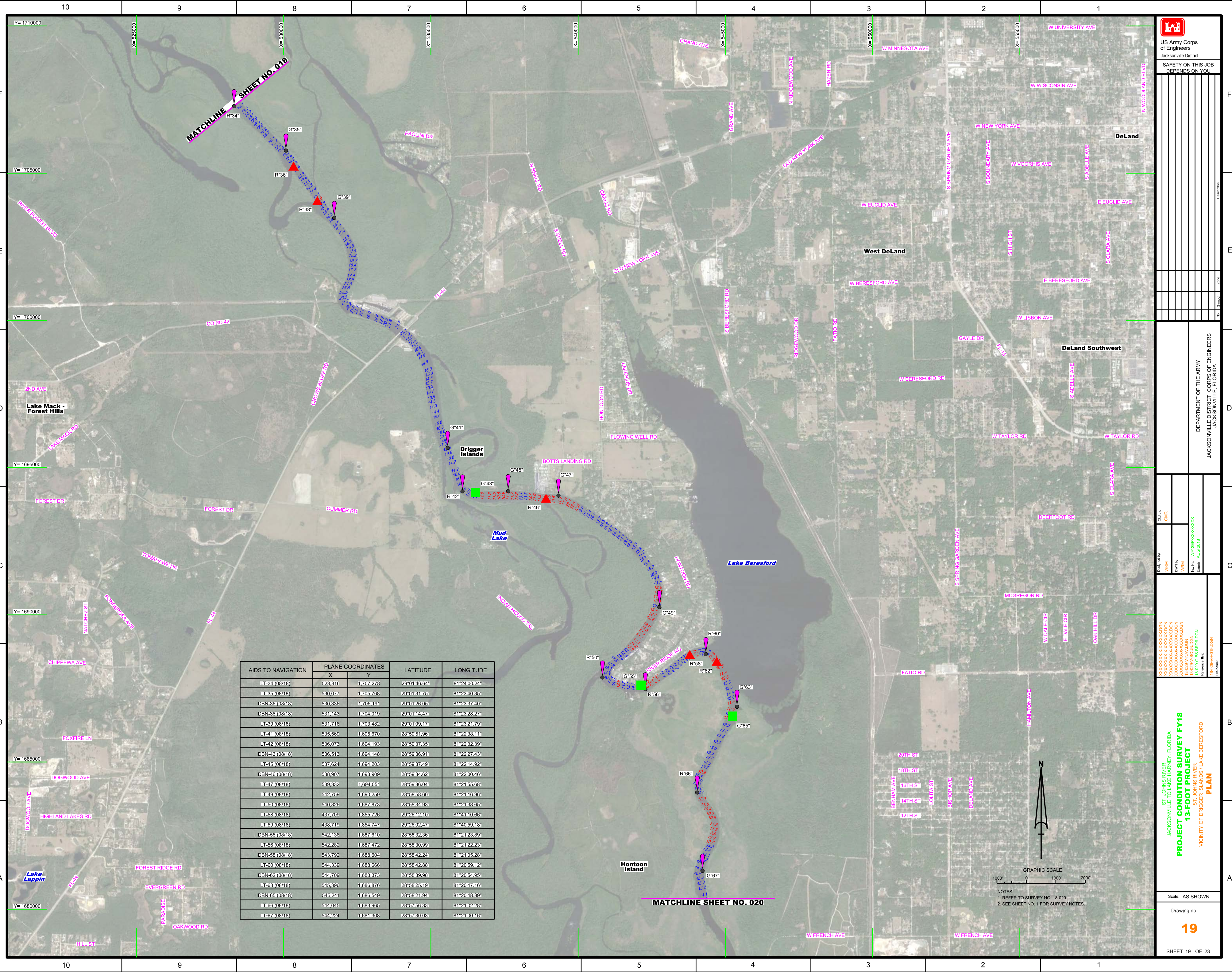
 US Army Corps of Engineers
Jacksonville District
SAFETY ON THIS JOB
DEPENDS ON YOU

DEPARTMENT OF THE ARMY
JACKSONVILLE DISTRICT, CORPS OF ENGINEERS
JACKSONVILLE, FLORIDA

Drawn by: GHR
Checked by: GHR
Designed by: WRM
DWG No: 18-029
File No: 18-029-0000-0000
Reference Map: 18-029-0000-0000
Revision: 18-029-0000-0000

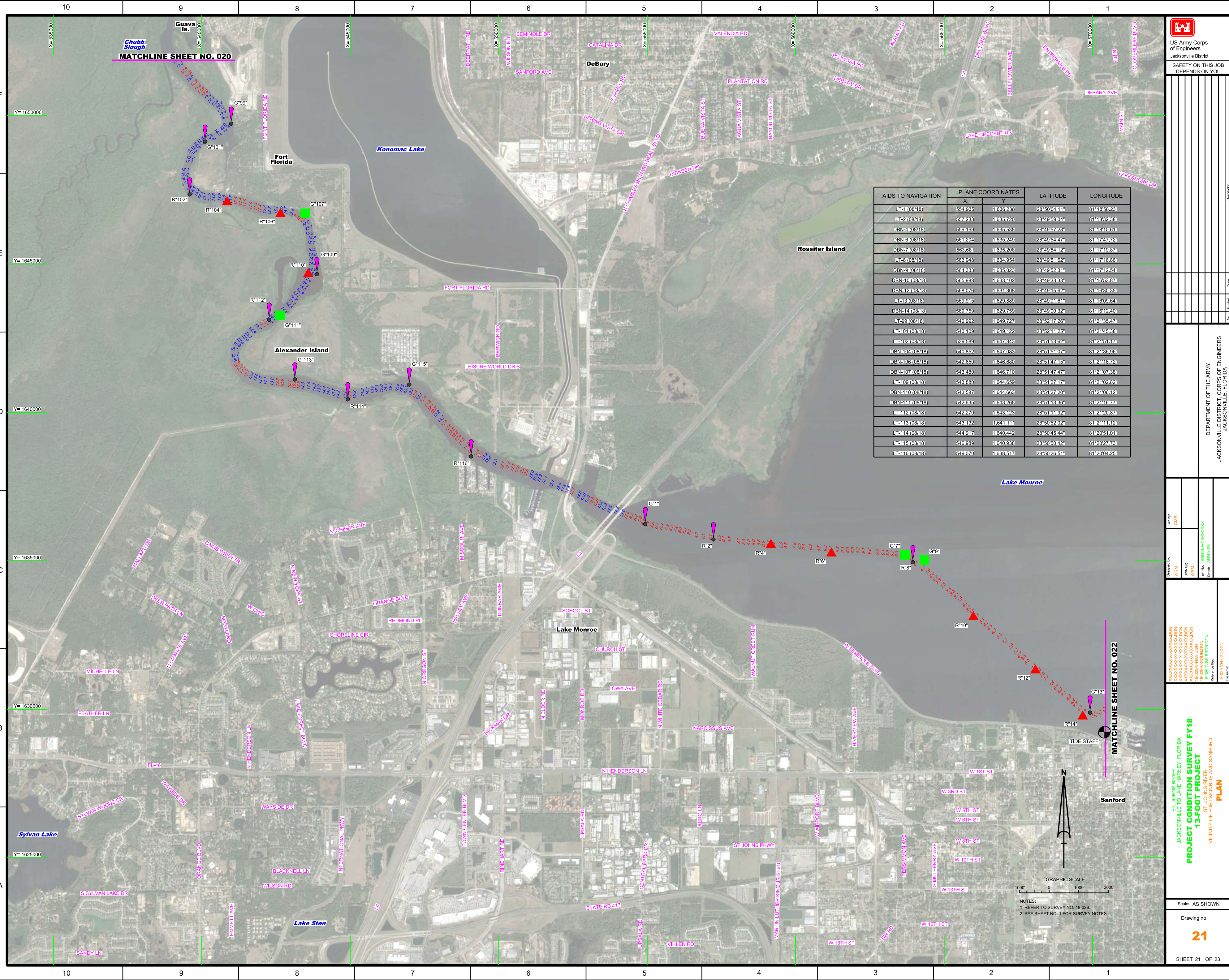
ST. JOHNS RIVER
JACKSONVILLE TO LAKE HARNLEY, FLORIDA
PROJECT CONDITION SURVEY FY18
13-FOOT PROJECT
VICINITY OF DRIGGER ISLANDS/LAKE BERESFORD
PLAN

Scale: AS SHOWN
Drawing no.
19
SHEET 19 OF 23



AIDS TO NAVIGATION	PLANE COORDINATES		LATITUDE	LONGITUDE
	X	Y		
LT-34 (08/18)	528,316	1,707,278	29°01'46.64"	81°24'00.24"
LT-35 (08/18)	530,077	1,705,768	29°01'31.75"	81°23'40.35"
DBN-36 (08/18)	530,336	1,705,191	29°01'26.05"	81°23'37.40"
DBN-38 (08/18)	531,143	1,704,019	29°01'14.47"	81°23'28.27"
LT-39 (08/18)	531,716	1,703,482	29°01'09.17"	81°23'21.79"
LT-41 (08/18)	535,569	1,695,670	28°59'51.96"	81°22'38.11"
LT-42 (08/18)	535,073	1,694,193	28°59'37.35"	81°22'32.39"
DBN-43 (08/18)	535,513	1,694,148	28°59'36.91"	81°22'27.43"
LT-45 (08/18)	537,624	1,694,203	28°59'37.49"	81°22'14.92"
DBN-46 (08/18)	538,907	1,693,909	28°59'34.62"	81°22'00.46"
LT-47 (08/18)	539,332	1,694,051	28°59'36.04"	81°21'55.68"
LT-49 (08/18)	542,759	1,690,259	28°58'58.60"	81°21'16.99"
LT-50 (08/18)	540,826	1,687,873	28°58'34.93"	81°21'38.65"
LT-58 (08/18)	437,709	1,855,726	29°26'12.10"	81°41'10.66"
LT-59 (08/18)	438,719	1,854,747	29°26'02.47"	81°40'59.16"
DBN-55 (08/18)	542,136	1,687,610	28°58'32.36"	81°21'23.89"
LT-56 (08/18)	542,282	1,687,472	28°58'30.99"	81°21'22.23"
DBN-58 (08/18)	543,792	1,688,604	28°58'42.24"	81°21'05.26"
LT-60 (08/18)	544,339	1,688,666	28°58'42.88"	81°20'59.12"
DBN-62 (08/18)	544,709	1,688,373	28°58'39.99"	81°20'54.95"
LT-63 (08/18)	545,396	1,688,376	28°58'25.19"	81°20'47.16"
DBN-65 (08/18)	545,241	1,688,549	28°58'21.94"	81°20'48.89"
LT-66 (08/18)	544,045	1,683,965	28°57'56.33"	81°21'02.26"
LT-67 (08/18)	544,224	1,681,308	28°57'30.03"	81°21'00.16"





Chubb Slough
MATCHLINE SHEET NO. 020

MATCHLINE SHEET NO. 022

AIDS TO NAVIGATION	PLANE COORDINATES		LATITUDE	LONGITUDE
	X	Y		
L*1 (08/18)	554.935	1636.238	28°50'04.11"	81°18'58.23"
L*2 (08/18)	557.283	1635.720	28°49'59.04"	81°18'52.38"
DBN*1 (08/18)	559.169	1635.538	28°49'57.28"	81°18'50.61"
DBN*6 (08/18)	561.204	1635.249	28°49'54.47"	81°17'47.72"
DBN*7 (08/18)	563.631	1635.208	28°49'54.12"	81°17'49.87"
L*8 (08/18)	568.948	1634.954	28°49'51.62"	81°17'16.86"
DBN*9 (08/18)	569.388	1635.028	28°49'52.31"	81°17'12.54"
DBN*10 (08/18)	569.588	1633.102	28°49'38.83"	81°16'58.87"
DBN*12 (08/18)	569.076	1631.806	28°49'16.62"	81°16'00.85"
L*13 (08/18)	569.615	1629.389	28°49'01.61"	81°15'09.64"
DBN*14 (08/18)	569.769	1629.769	28°49'00.82"	81°15'12.00"
L*19 (08/18)	540.682	1629.727	28°52'17.26"	81°21'38.47"
L*20 (08/18)	540.109	1629.122	28°52'11.25"	81°21'45.38"
L*21 (08/18)	539.589	1627.848	28°51'53.62"	81°21'51.77"
DBN*104 (08/18)	540.652	1624.038	28°51'51.07"	81°21'36.96"
DBN*103 (08/18)	542.650	1625.660	28°51'27.15"	81°21'16.72"
DBN*107 (08/18)	548.480	1626.710	28°51'47.47"	81°21'07.36"
L*109 (08/18)	548.880	1624.659	28°51'27.17"	81°21'02.82"
DBN*110 (08/18)	548.597	1624.668	28°51'27.20"	81°21'03.12"
DBN*111 (08/18)	542.685	1624.268	28°51'18.36"	81°21'16.77"
L*112 (08/18)	542.270	1623.828	28°51'11.82"	81°21'20.87"
L*113 (08/18)	548.182	1624.111	28°50'52.02"	81°21'11.12"
L*114 (08/18)	544.917	1624.242	28°50'45.24"	81°20'51.01"
L*115 (08/18)	546.889	1624.038	28°50'50.82"	81°20'22.74"
L*116 (08/18)	549.070	1633.517	28°50'26.51"	81°20'04.25"

US Army Corps of Engineers
Jacksonville District

SAFETY ON THIS JOB
DEPENDS ON YOU

DEPARTMENT OF THE ARMY
JACKSONVILLE DISTRICT, CORPS OF ENGINEERS
JACKSONVILLE, FLORIDA

ST. JOHNS RIVER
JACKSONVILLE TO LAKE HARNEY, FLORIDA
**PROJECT CONDITION SURVEY FY18
13-FOOT PROJECT**
VICINITY OF FORT MONROE AND SANFORD
PLAN

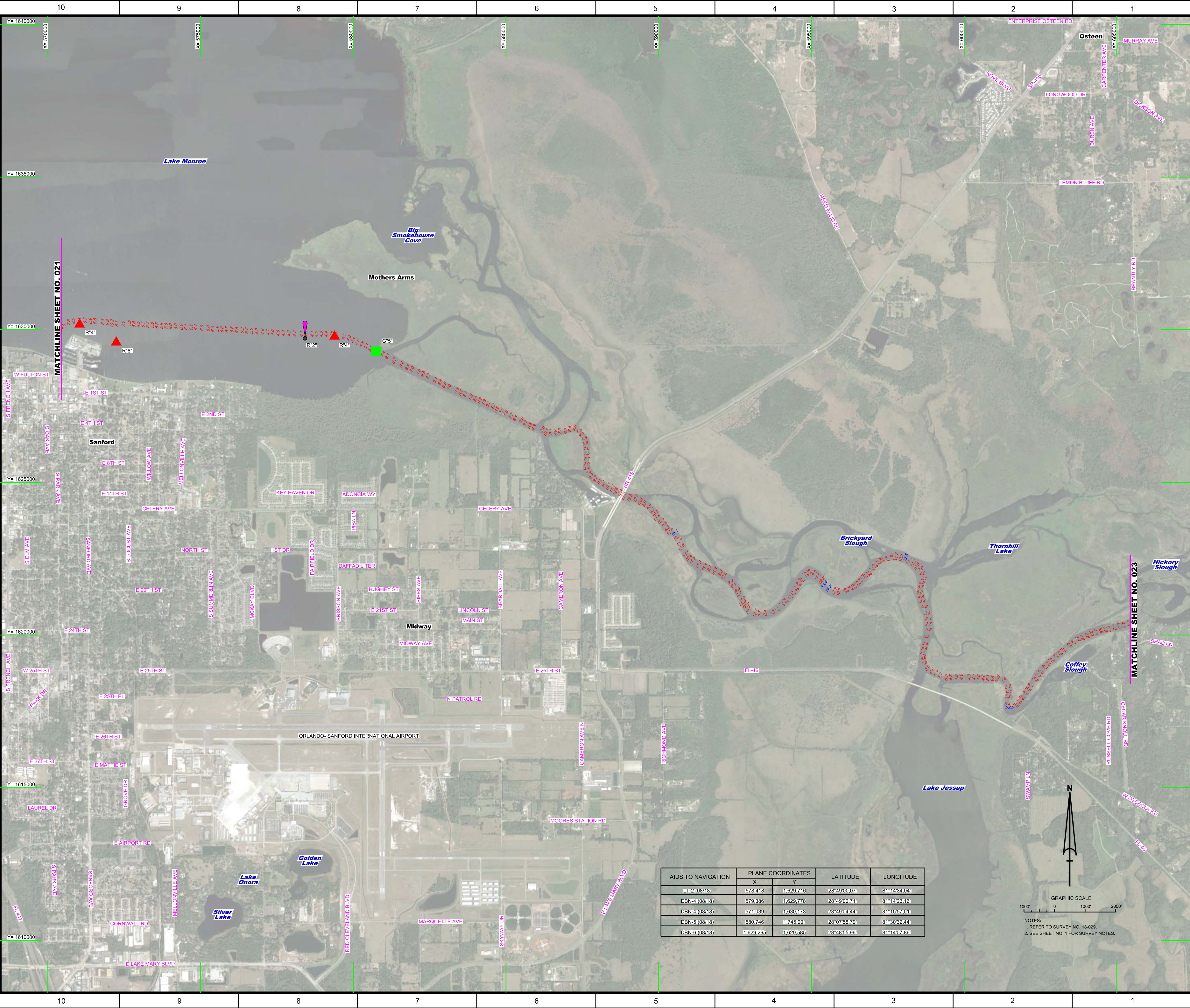
Scale: AS SHOWN

Drawing no.
21

SHEET 21 OF 23

GRAPHIC SCALE
0 1000 2000

NOTES:
1. REFER TO SURVEY NO. 18-028.
2. SEE SHEET NO. 1 FOR SURVEY NOTES.



US Army Corps of Engineers
Jacksonville District
SAFETY ON THIS JOB
DEPENDS ON YOU

DEPARTMENT OF THE ARMY
JACKSONVILLE DISTRICT, CORPS OF ENGINEERS
JACKSONVILLE, FLORIDA

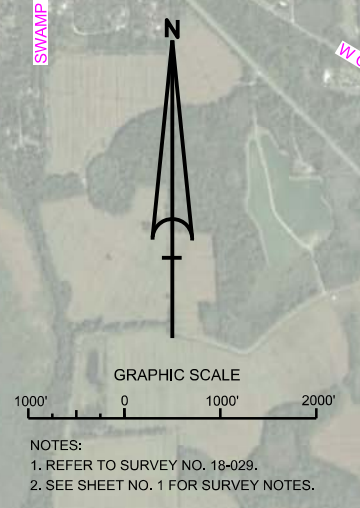
Checked By: GHR
Designed By: WRM
Drawn By: WRM
File No: W1825A-AVG-18-001
Project: AUG 2018

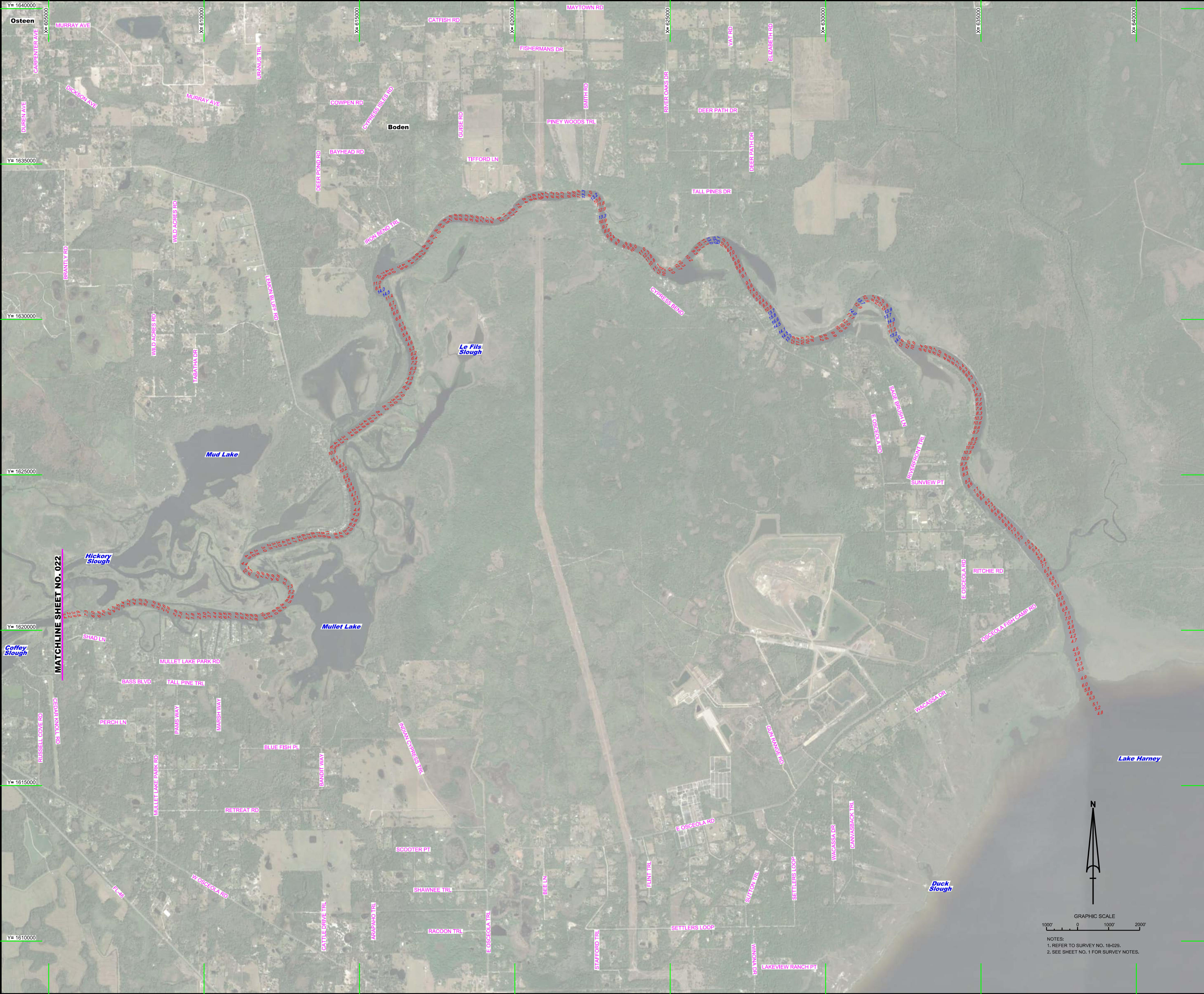
JACKSONVILLE TO LAKE HARNEY, FLORIDA
PROJECT CONDITION SURVEY FY18
13-FOOT PROJECT
VICINITY OF MIDWAY AND SANFORD
PLAN

Scale: AS SHOWN
Drawing no.
22

SHEET 22 OF 23

AIDS TO NAVIGATION	PLANE COORDINATES		LATITUDE	LONGITUDE
	X	Y		
LT-2 (08/18)	578,418	1,629,716	28°49'00.07"	81°14'34.04"
DBN-4 (08/18)	579,386	1,629,778	28°49'00.71"	81°14'28.16"
DBN-4 (08/18)	571,039	1,630,173	28°49'04.44"	81°15'57.01"
DBN-5 (08/18)	580,746	1,745,001	28°07'58.79"	81°30'42.44"
DBN-6 (08/18)	1,629,295	1,629,585	28°48'55.96"	81°14'07.86"



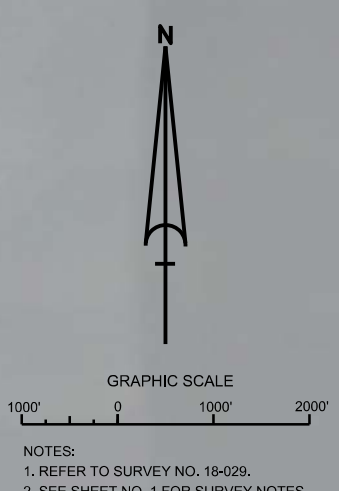


No.	Symbol	Name

DEPARTMENT OF THE ARMY
 JACKSONVILLE DISTRICT, CORPS OF ENGINEERS
 JACKSONVILLE, FLORIDA

Drawn by: GHR
 Designated by: WRM
 Scale: AS SHOWN

PROJECT CONDITION SURVEY FY18
13-FOOT PROJECT
 VICINITY OF BOBEN AND LAKE HARNEY
PLAN



NOTES:
 1. REFER TO SURVEY NO. 18-029.
 2. SEE SHEET NO. 1 FOR SURVEY NOTES.