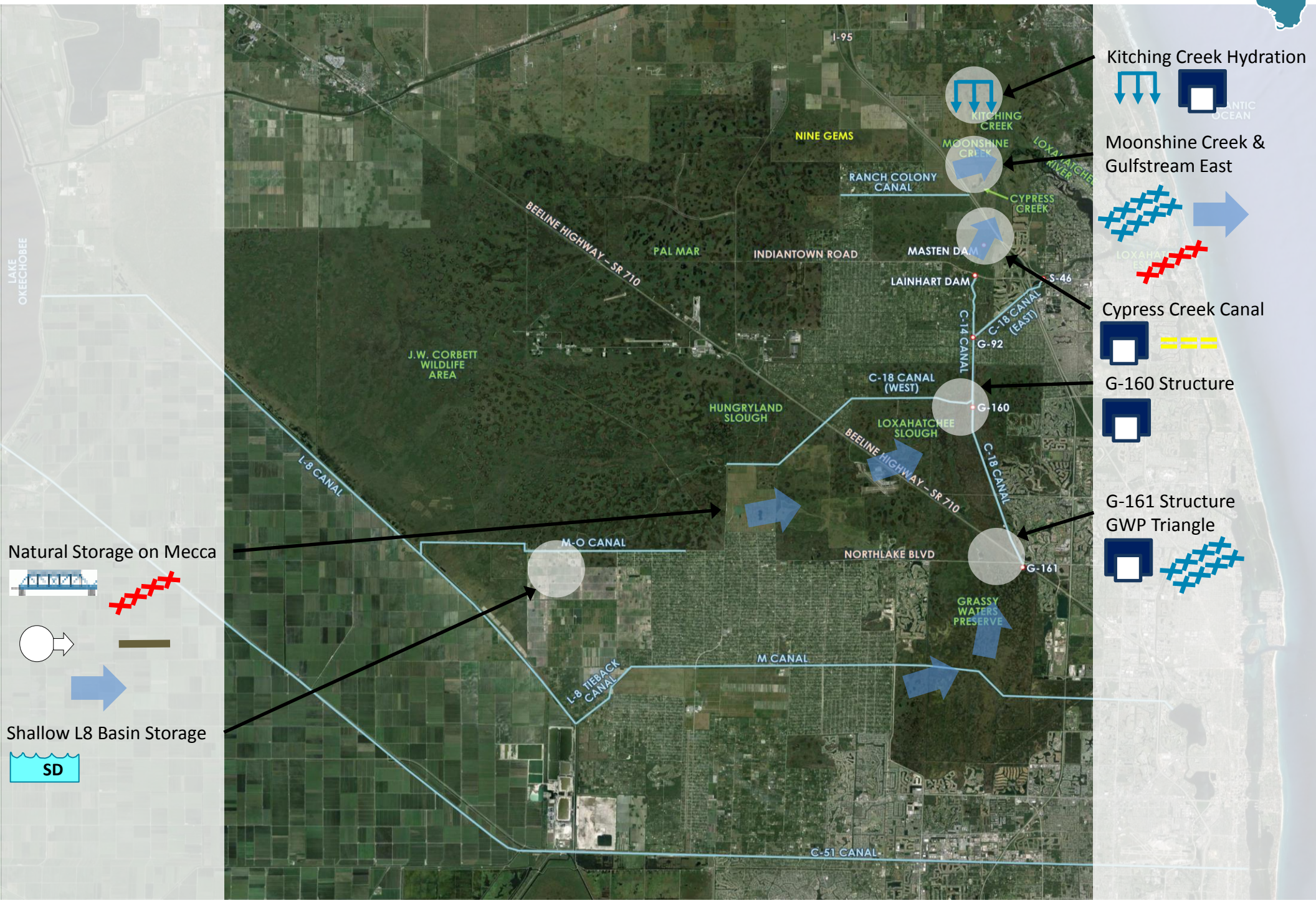


# LOXAHATCHEE RIVER WATERSHED RESTORATION (LRWR) PROJECT

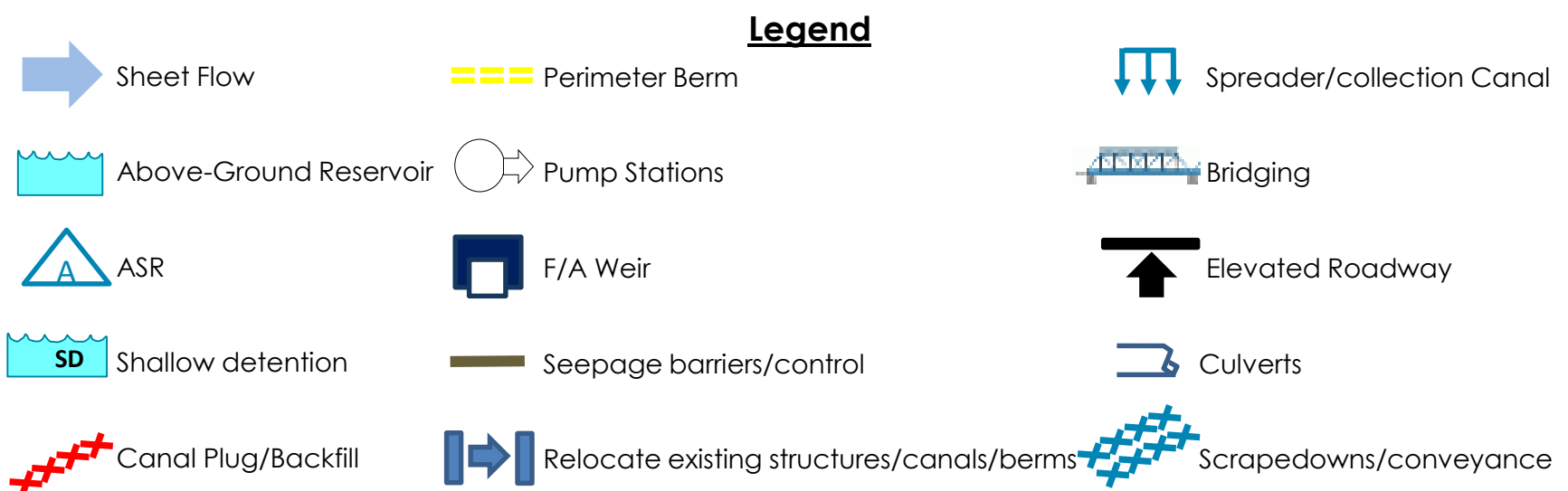
## COMPREHENSIVE EVERGLADES RESTORATION PLAN (CERP)

ALTERNATIVE #1

March 2016



3B	<b>Kitching Creek Hydration</b>	Spreader Canal at Jenkins Ditch at JDSP northern boundary Weir or plug on Jenkins ditch near connection with Kitching Creek
	<b>Moonshine Creek &amp; Gulfstream East</b>	Connect HSLCD ditch to Moonshine Cr; Clear veg in Moonshine Cr; Fill Gulfstream Ditch; Regrade to historic topography
	<b>Cypress Creek Canal</b>	Replace Cypress Creek Canal Weir Raise Northern Berm at Ranch Colony
2H	<b>Natural storage on Mecca</b>	Restore Natural Topography; Bridge/Culverts for Beeline; Backfill Interior Canals in Corbett; Pump to protect Caloosa
1F	<b>Shallow L-8 Basin storage (10,000 ac-ft)</b>	10,000 ac-ft Shallow Storage Includes Pump & Channels
	<b>G-160</b>	Restore hydroperiod in Lox Slough
	<b>G-161</b>	GWP water to Lox Slough
	<b>GWP triangle</b>	Improve Connectivity

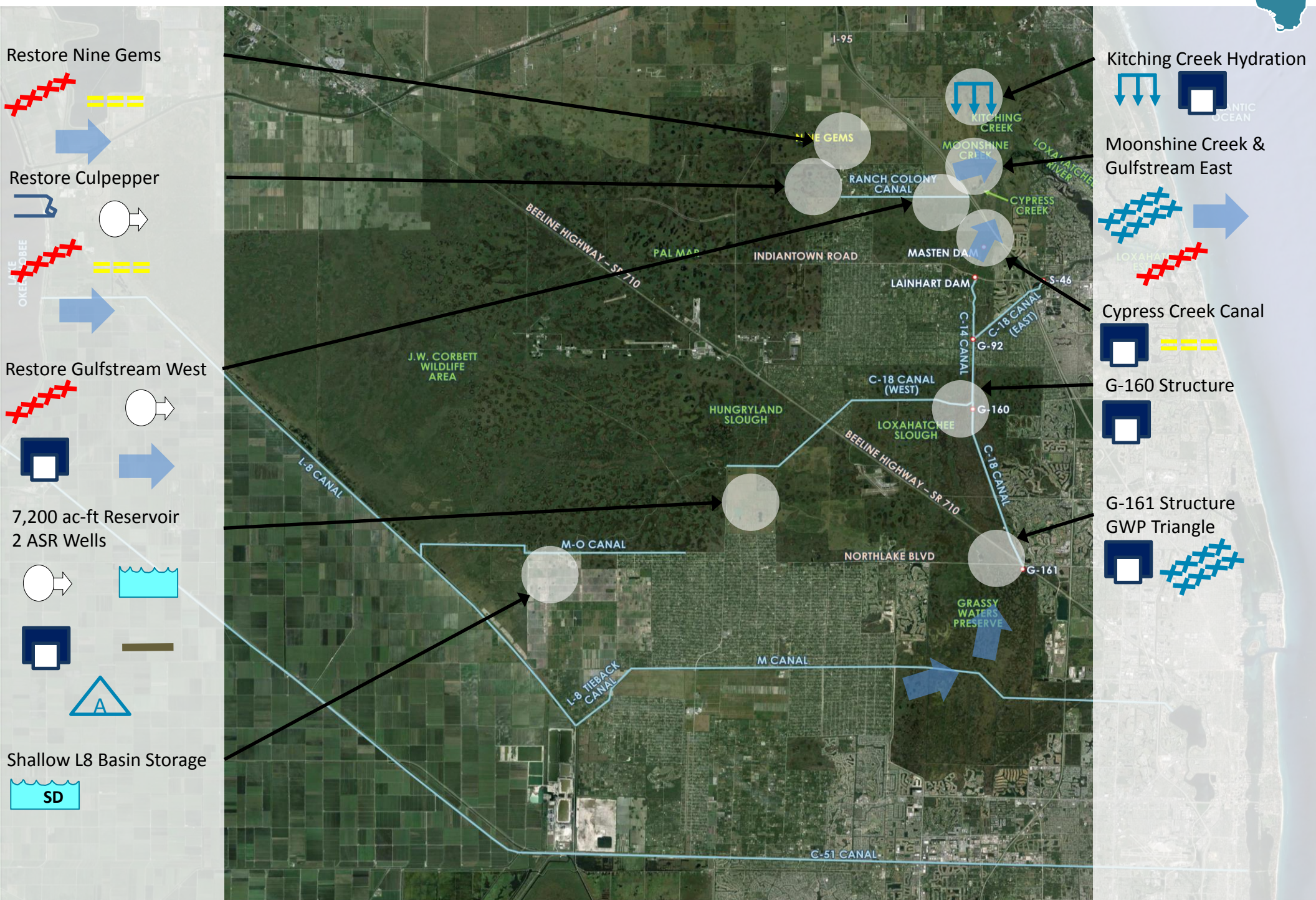


# LOXAHATCHEE RIVER WATERSHED RESTORATION (LRWR) PROJECT

## COMPREHENSIVE EVERGLADES RESTORATION PLAN (CERP)

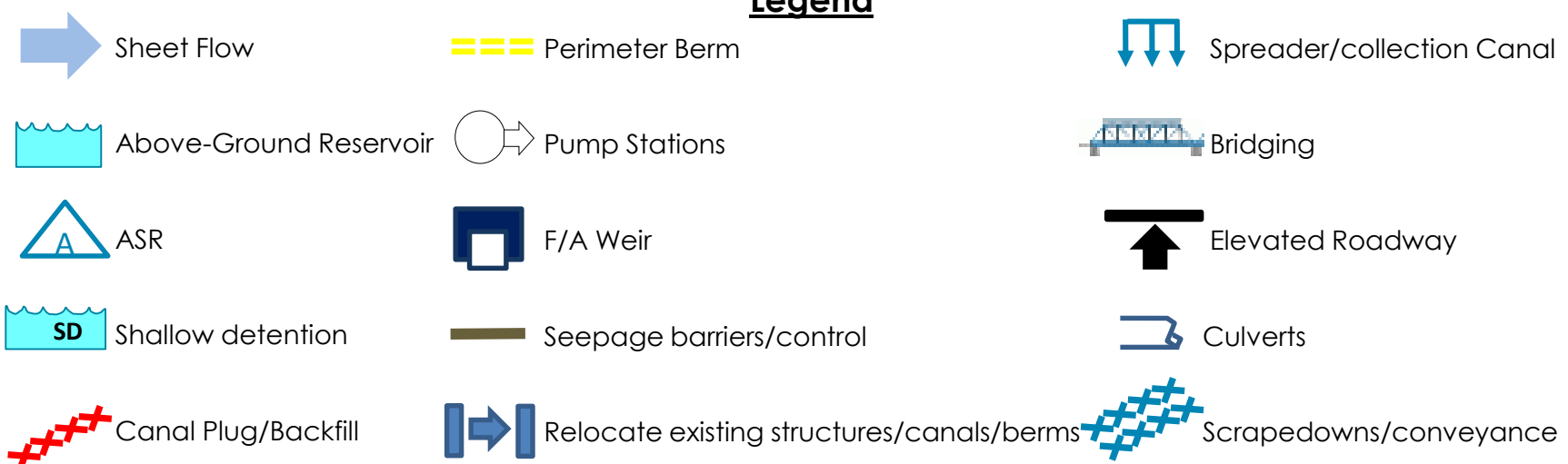
ALTERNATIVE #2

March 2016



3E	<b>Kitching Creek Hydration</b>	Spreader Canal at Jenkins Ditch at JDSP northern boundary Weir or plug on Jenkins ditch near connection with Kitching Creek
	<b>Moonshine Creek &amp; Gulfstream East</b>	Connect HSLCD ditch to Moonshine Cr; Clear veg in Moonshine Cr; Fill Gulfstream Ditch; Regrade to historic topography
	<b>Cypress Creek Canal</b>	Replace Cypress Creek Canal Weir Raise Northern Berm at Ranch Colony
	<b>Restore Gulfstream West</b>	Partial backfill & relocate southern end of HSLCD canal; Small pump; Flow through marsh; Discharge structure
	<b>Restore Nine Gems (PalMar East)</b>	Plug N-S ditches; Remove pipes; Improve northern berm; Construct western berm
	<b>Culpepper (and edge of PalMar)</b>	Automate twin 84, Improve eastern berm; Backfill northern canal; Pumps at Thomas Farm; Redirect drainage to north side of Nine Gems
2B	<b>C-18 W storage reservoir</b>	Above ground reservoir, Inflow pump, Discharge structure, Seepage ctrl (7,200 ac-ft)
	<b>ASR at C-18 W storage</b>	2 wells, supplement volume of the reservoir
1F	<b>Shallow L-8 Basin storage (10,000 ac-ft)</b>	10,000 ac-ft Shallow Storage Includes Pump & Channels
	<b>G-160</b>	Restore hydroperiod in Lox Slough
	<b>G-161</b>	GWP water to Lox Slough
	<b>GWP triangle</b>	Improve Connectivity

### Legend

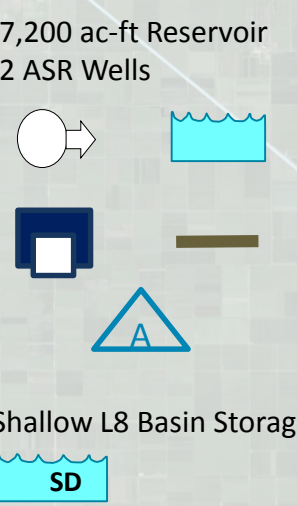
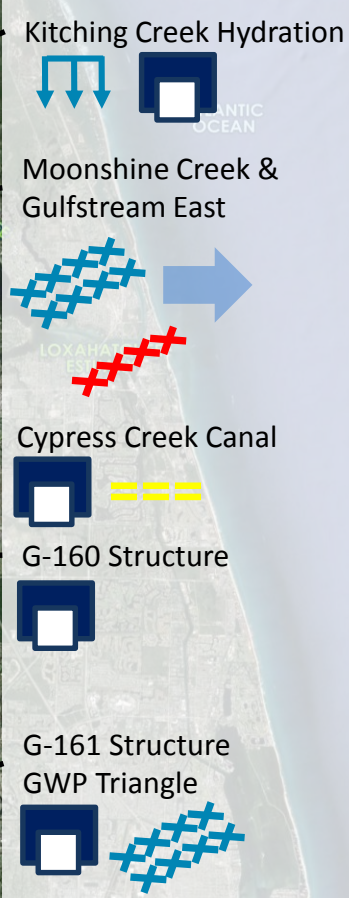
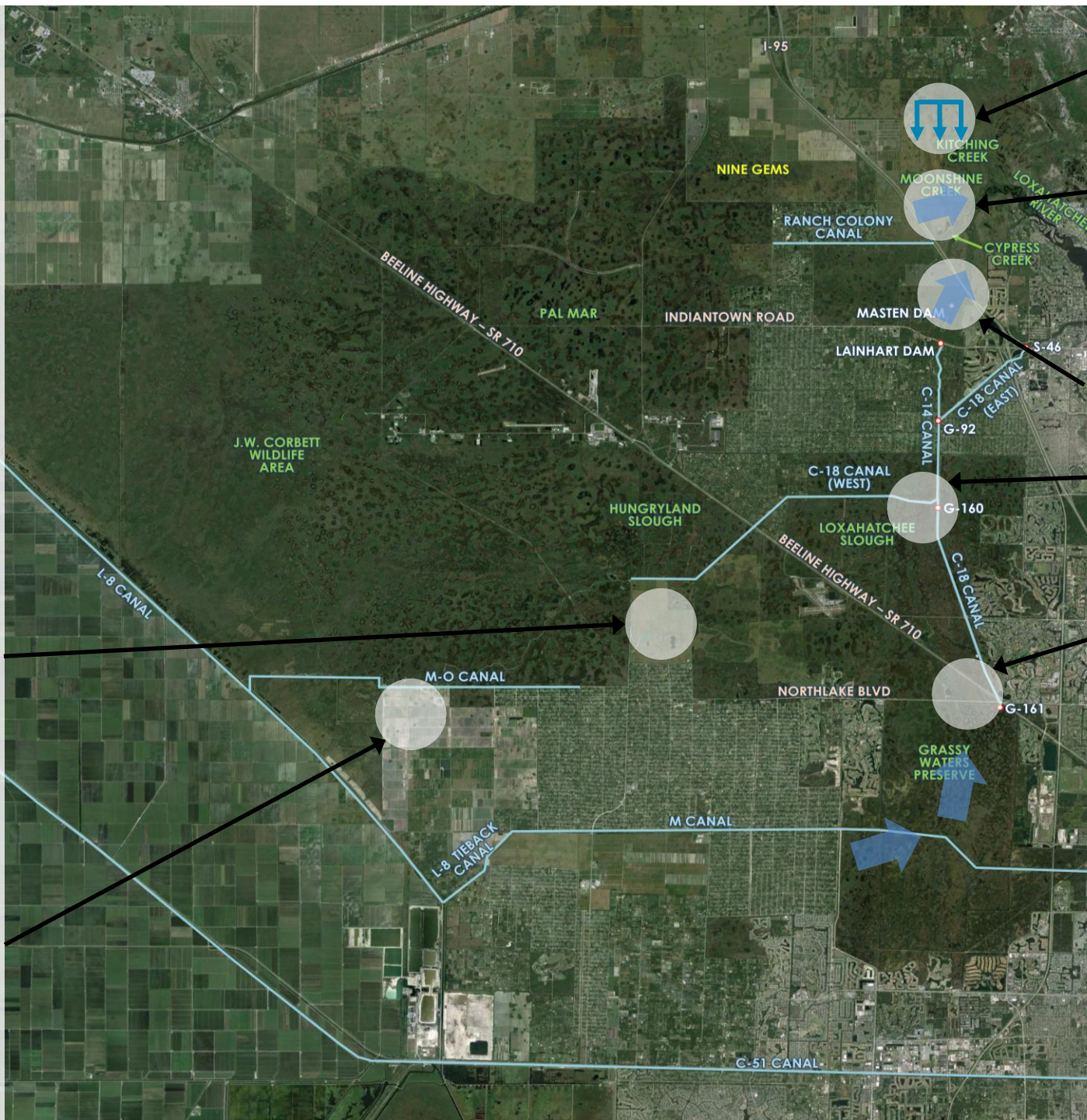
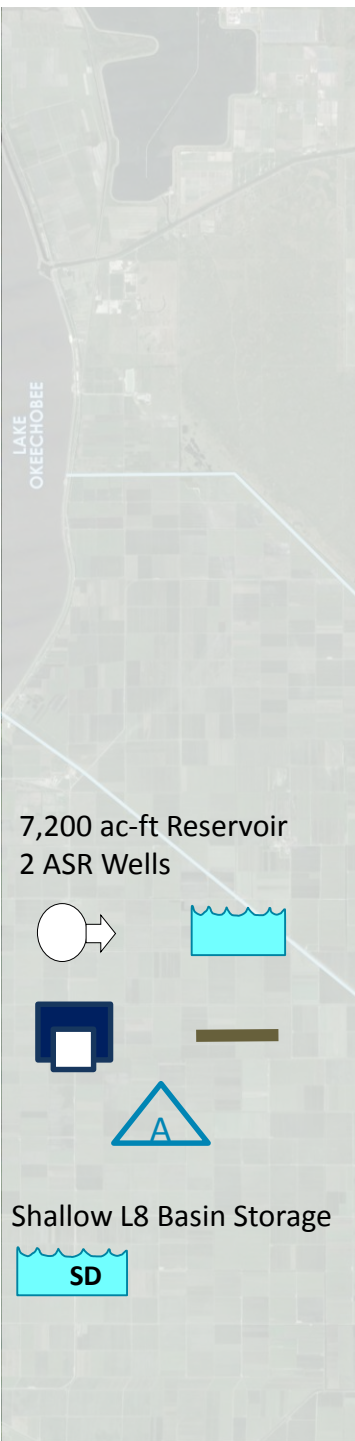


# LOXAHATCHEE RIVER WATERSHED RESTORATION (LRWR) PROJECT

## COMPREHENSIVE EVERGLADES RESTORATION PLAN (CERP)

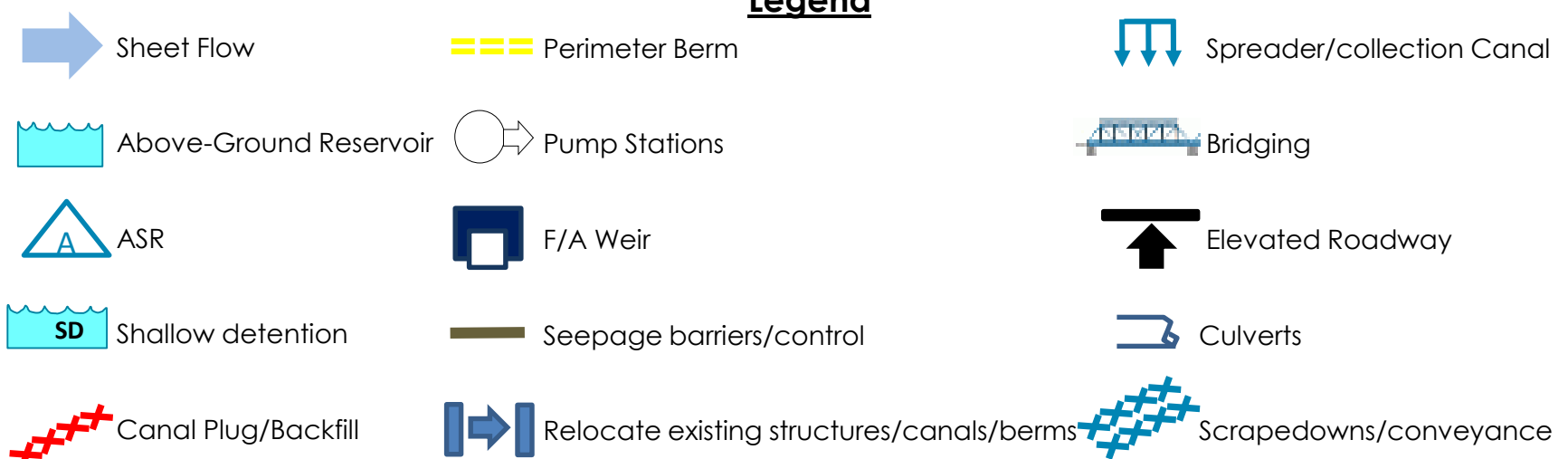
ALTERNATIVE #3

March 2016



3B	<b>Kitching Creek Hydration</b>	Spreader Canal at Jenkins Ditch at JDSP northern boundary Weir or plug on Jenkins ditch near connection with Kitching Creek
	<b>Moonshine Creek &amp; Gulfstream East</b>	Connect HSLCD ditch to Moonshine Cr; Clear veg in Moonshine Cr; Fill Gulfstream Ditch; Regrade to historic topography
	<b>Cypress Creek Canal</b>	Replace Cypress Creek Canal Weir Raise Northern Berm at Ranch Colony
2B	<b>C-18 W storage reservoir</b>	Above ground reservoir, Inflow pump, Discharge structure, Seepage ctrl (7,200 ac-ft)
	<b>ASR at C-18 W storage</b>	2 wells, supplement volume of the reservoir
1F	<b>Shallow L-8 Basin storage (10,000 ac-ft)</b>	10,000 ac-ft Shallow Storage Includes Pump & Channels
	<b>G-160</b>	Restore hydroperiod in Lox Slough
	<b>G-161</b>	GWP water to Lox Slough
	<b>GWP triangle</b>	Improve Connectivity

### Legend



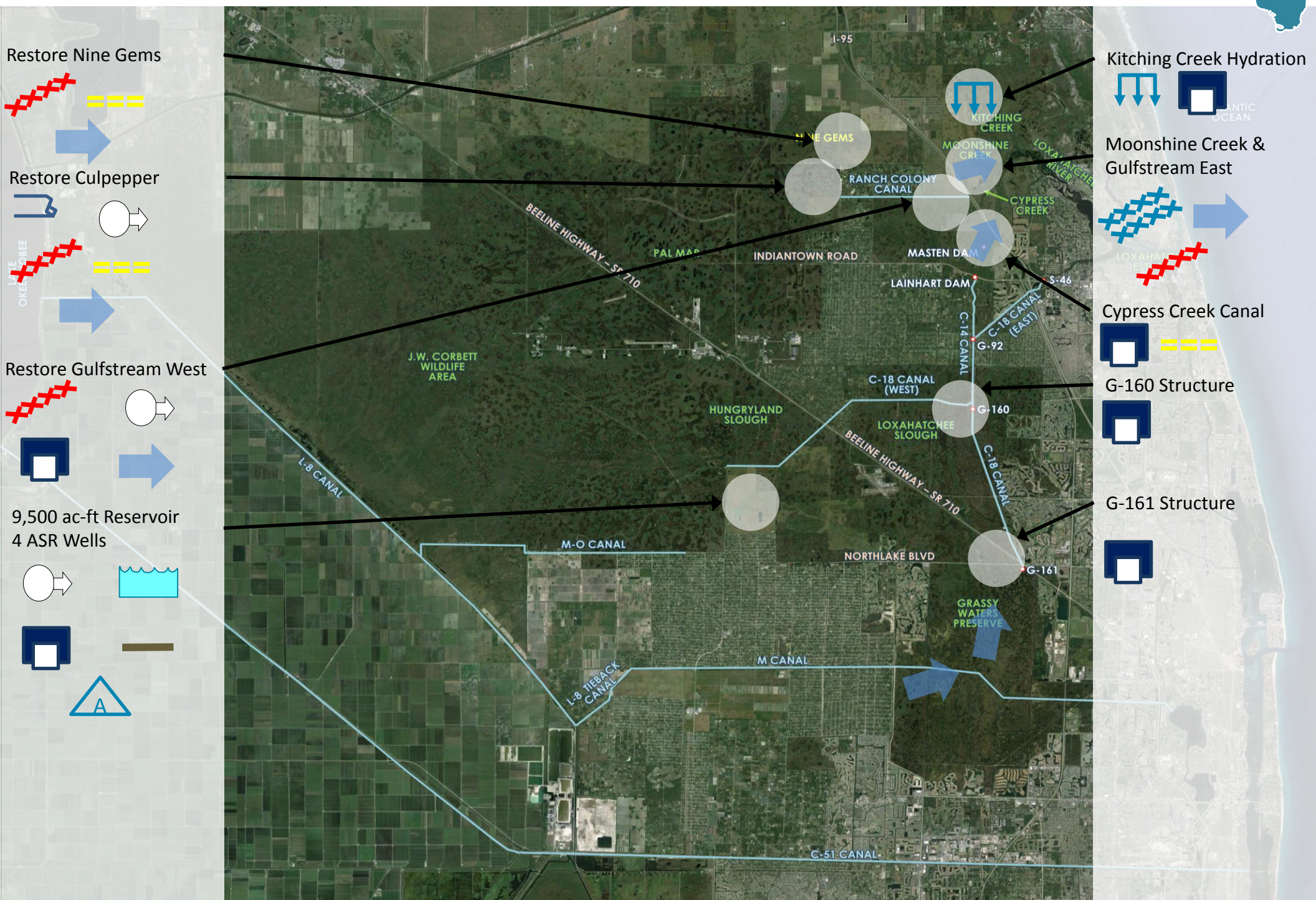


# LOXAHATCHEE RIVER WATERSHED RESTORATION (LRWR) PROJECT

## COMPREHENSIVE EVERGLADES RESTORATION PLAN (CERP)

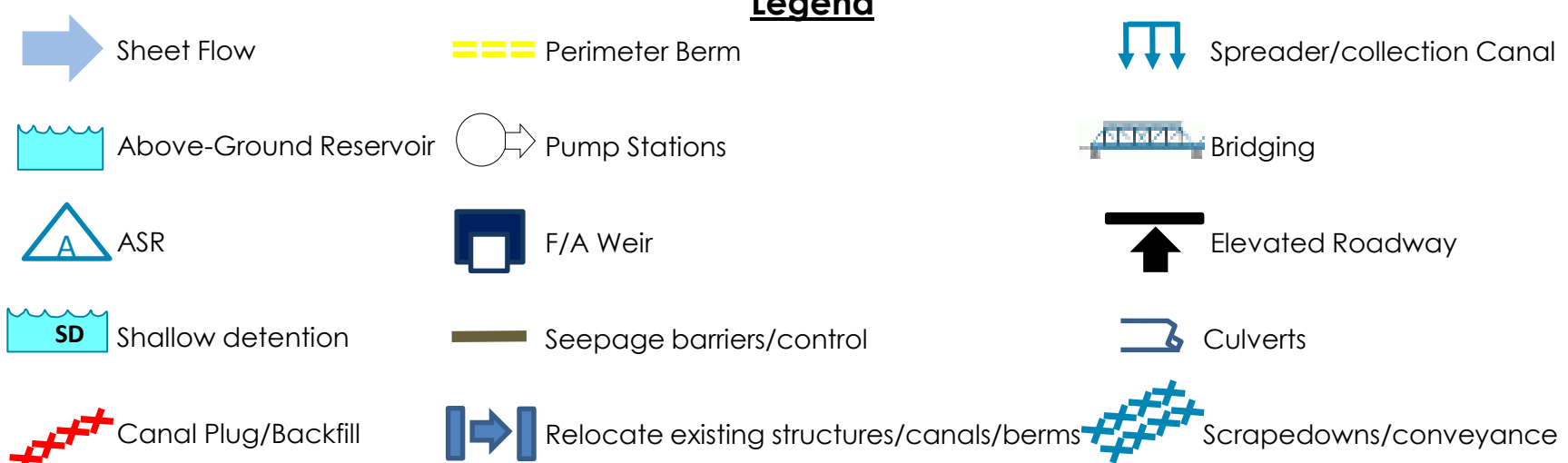
ALTERNATIVE #5

March 2016



3E	<b>Kitching Creek Hydration</b>	Spreader Canal at Jenkins Ditch at JDSP northern boundary Weir or plug on Jenkins ditch near connection with Kitching Creek
	<b>Moonshine Creek &amp; Gulfstream East</b>	Connect HSLCD ditch to Moonshine Cr; Clear veg in Moonshine Cr; Fill Gulfstream Ditch; Regrade to historic topography
	<b>Cypress Creek Canal</b>	Replace Cypress Creek Canal Weir Raise Northern Berm at Ranch Colony
	<b>Restore Gulfstream West</b>	Partial backfill & relocate southern end of HSLCD canal; Small pump; Flow through marsh; Discharge structure
	<b>Restore Nine Gems (PalMar East)</b>	Plug N-S ditches; Remove pipes; Improve northern berm; Construct western berm
	<b>Culpepper (and edge of PalMar)</b>	Automate twin 84, Improve eastern berm; Backfill northern canal; Pumps at Thomas Farm; Redirect drainage to north side of Nine Gems
2B+	<b>C-18 W storage reservoir</b>	Above ground reservoir, Inflow pump, Discharge structure, Seepage ctrl (9,500 ac-ft)
	<b>ASR at C-18 W storage</b>	4 wells, supplement volume of the reservoir

### Legend

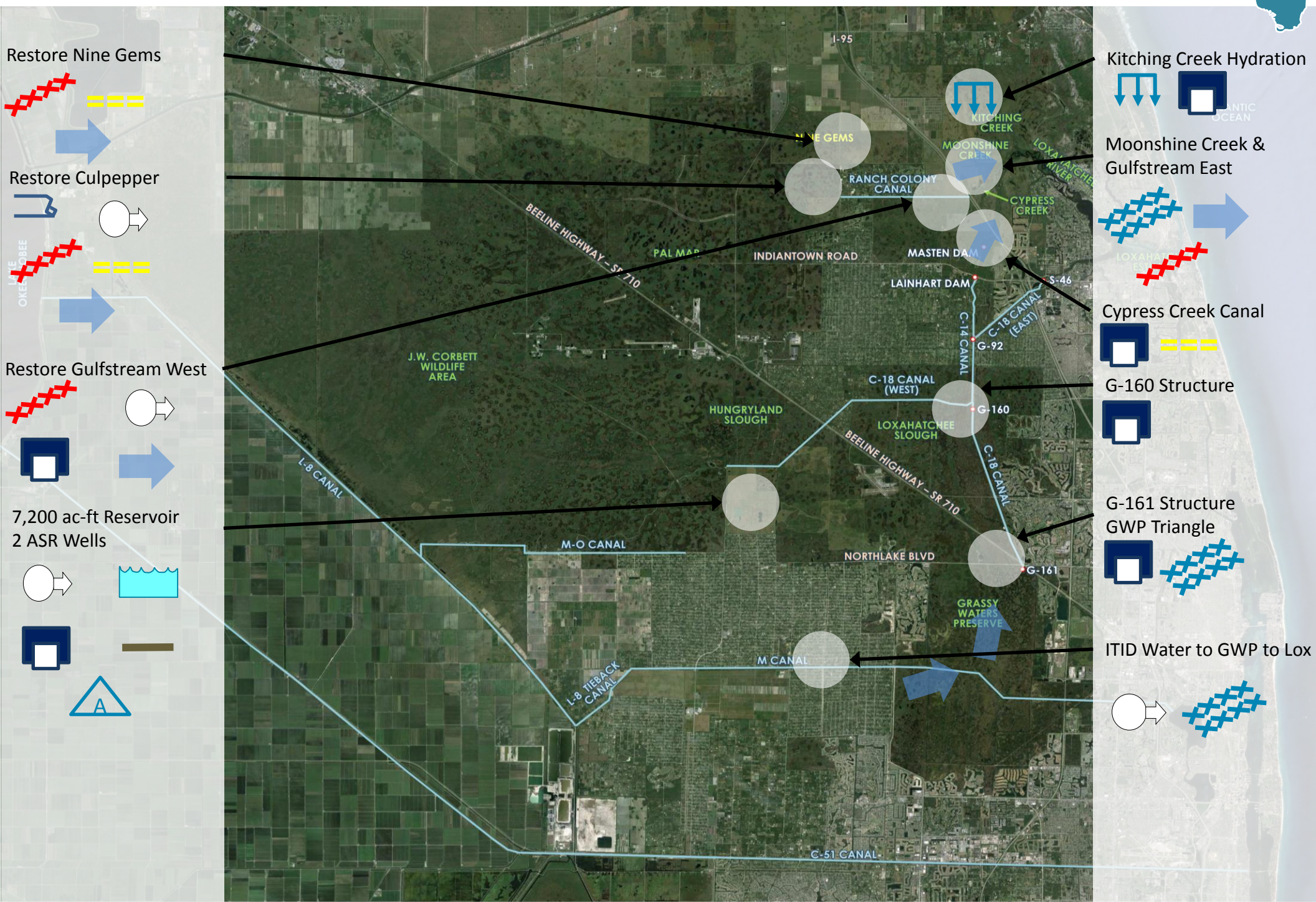


# LOXAHATCHEE RIVER WATERSHED RESTORATION (LRWR) PROJECT

## COMPREHENSIVE EVERGLADES RESTORATION PLAN (CERP)

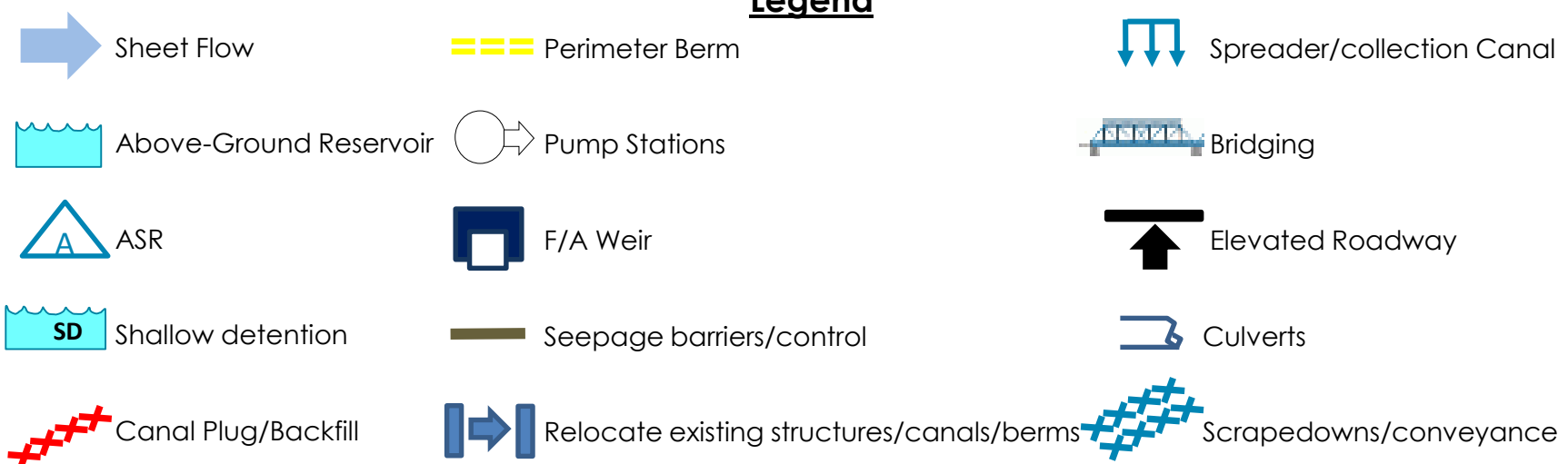
ALTERNATIVE #6

March 2016



3E	<b>Kitching Creek Hydration</b>	Spreader Canal at Jenkins Ditch at JDSP northern boundary Weir or plug on Jenkins ditch near connection with Kitching Creek
	<b>Moonshine Creek &amp; Gulfstream East</b>	Connect HSLCD ditch to Moonshine Cr; Clear veg in Moonshine Cr; Fill Gulfstream Ditch; Regrade to historic topography
	<b>Cypress Creek Canal</b>	Replace Cypress Creek Canal Weir Raise Northern Berm at Ranch Colony
	<b>Restore Gulfstream West</b>	Partial backfill & relocate southern end of HSLCD canal; Small pump; Flow through marsh; Discharge structure
	<b>Restore Nine Gems (PalMar East)</b>	Plug N-S ditches; Remove pipes; Improve northern berm; Construct western berm
	<b>Culpepper (and edge of PalMar)</b>	Automate twin 84, Improve eastern berm; Backfill northern canal; Pumps at Thomas Farm; Redirect drainage to north side of Nine Gems
2B	<b>C-18 W storage reservoir</b>	Above ground reservoir, Inflow pump, Discharge structure, Seepage ctrl (7,200 ac-ft)
	<b>ASR at C-18 W storage</b>	2 wells, supplement volume of the reservoir
1B	<b>G-160</b>	Restore hydroperiod in Lox Slough
	<b>G-161</b>	GWP water to Lox Slough
	<b>GWP triangle</b>	Improve Connectivity
	<b>ITID water to GWP to Lox</b>	Pump, IDIT to M-canal, to GWP

### Legend

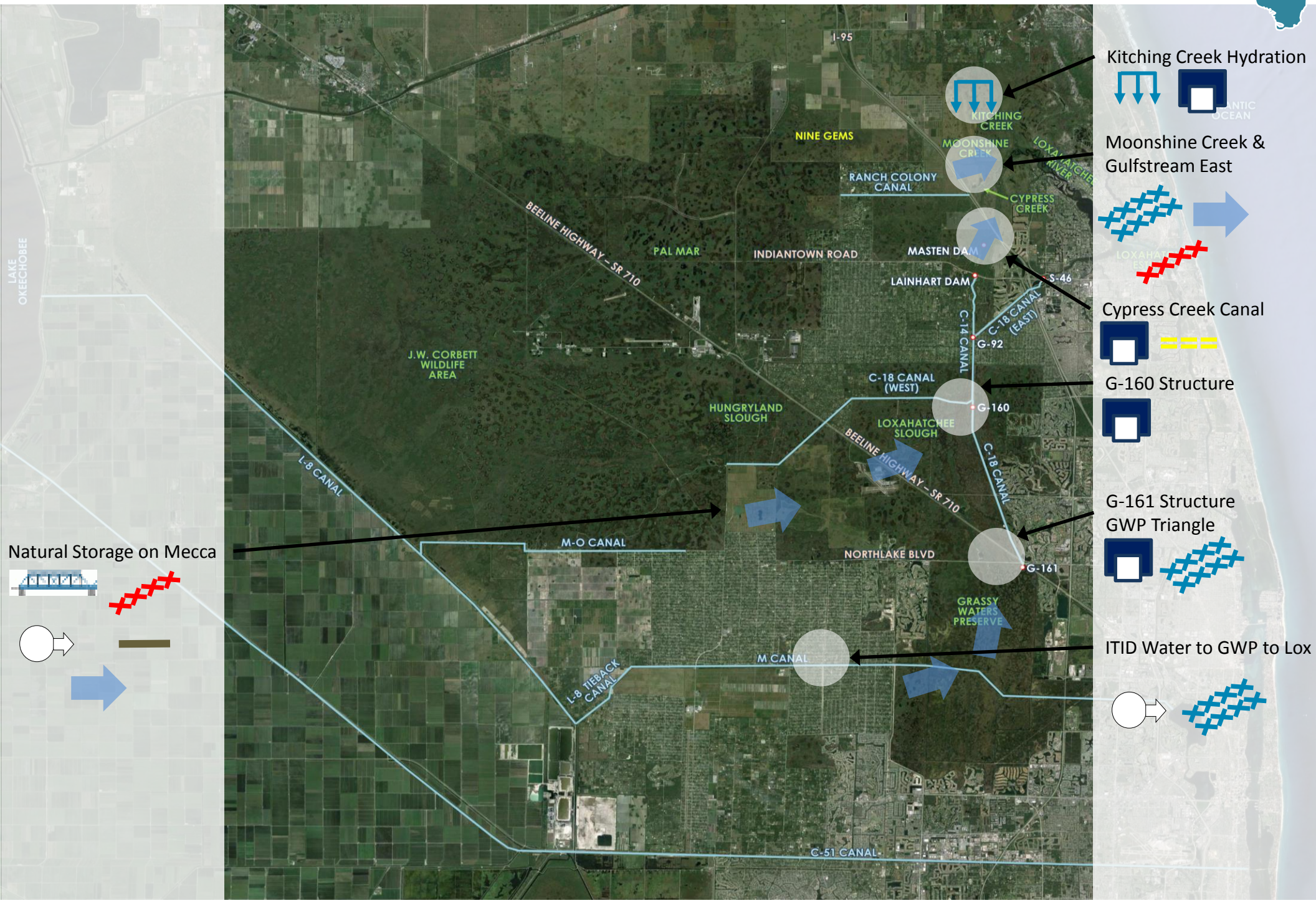


# LOXAHATCHEE RIVER WATERSHED RESTORATION (LRWR) PROJECT

## COMPREHENSIVE EVERGLADES RESTORATION PLAN (CERP)

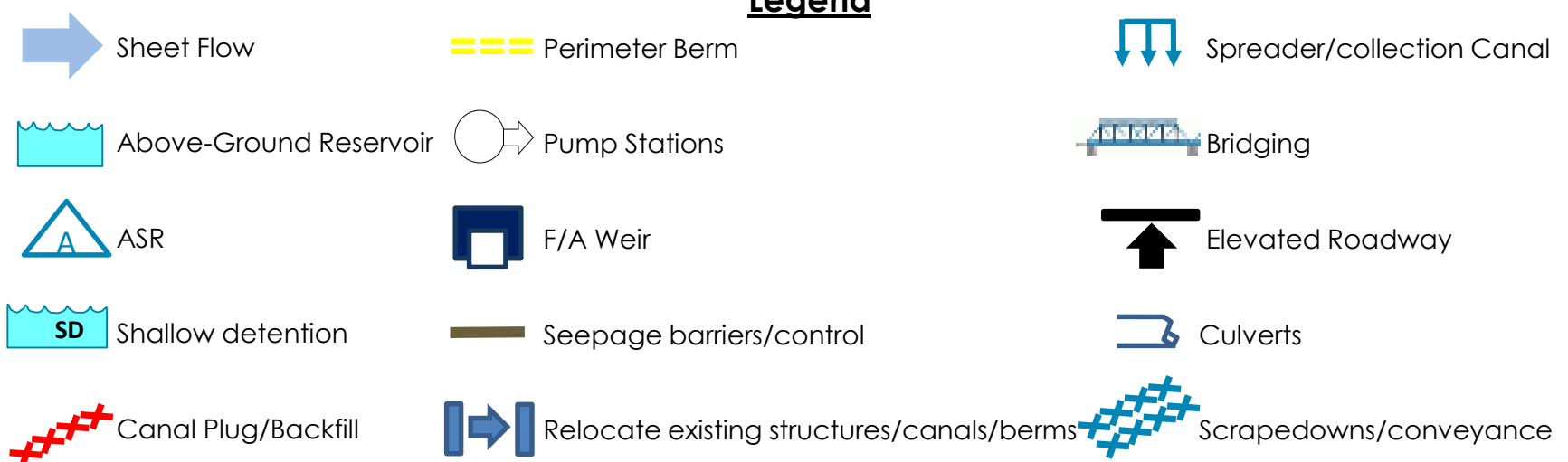
ALTERNATIVE #7

March 2016



3B	<b>Kitching Creek Hydration</b>	Spreader Canal at Jenkins Ditch at JDSP northern boundary Weir or plug on Jenkins ditch near connection with Kitching Creek
	<b>Moonshine Creek &amp; Gulfstream East</b>	Connect HSLCD ditch to Moonshine Cr; Clear veg in Moonshine Cr; Fill Gulfstream Ditch; Regrade to historic topography
	<b>Cypress Creek Canal</b>	Replace Cypress Creek Canal Weir Raise Northern Berm at Ranch Colony
2H	<b>Natural storage on Mecca</b>	Restore Natural Topography; Bridge/Culverts for Beeline; Backfill Interior Canals in Corbett; Pump to protect Caloosa
1B	<b>G-160</b>	Restore hydroperiod in Lox Slough
	<b>G-161</b>	GWP water to Lox Slough
	<b>GWP triangle</b>	Improve Connectivity
	<b>ITID water to GWP to Lox</b>	Pump, IDIT to M-canal, to GWP

### Legend

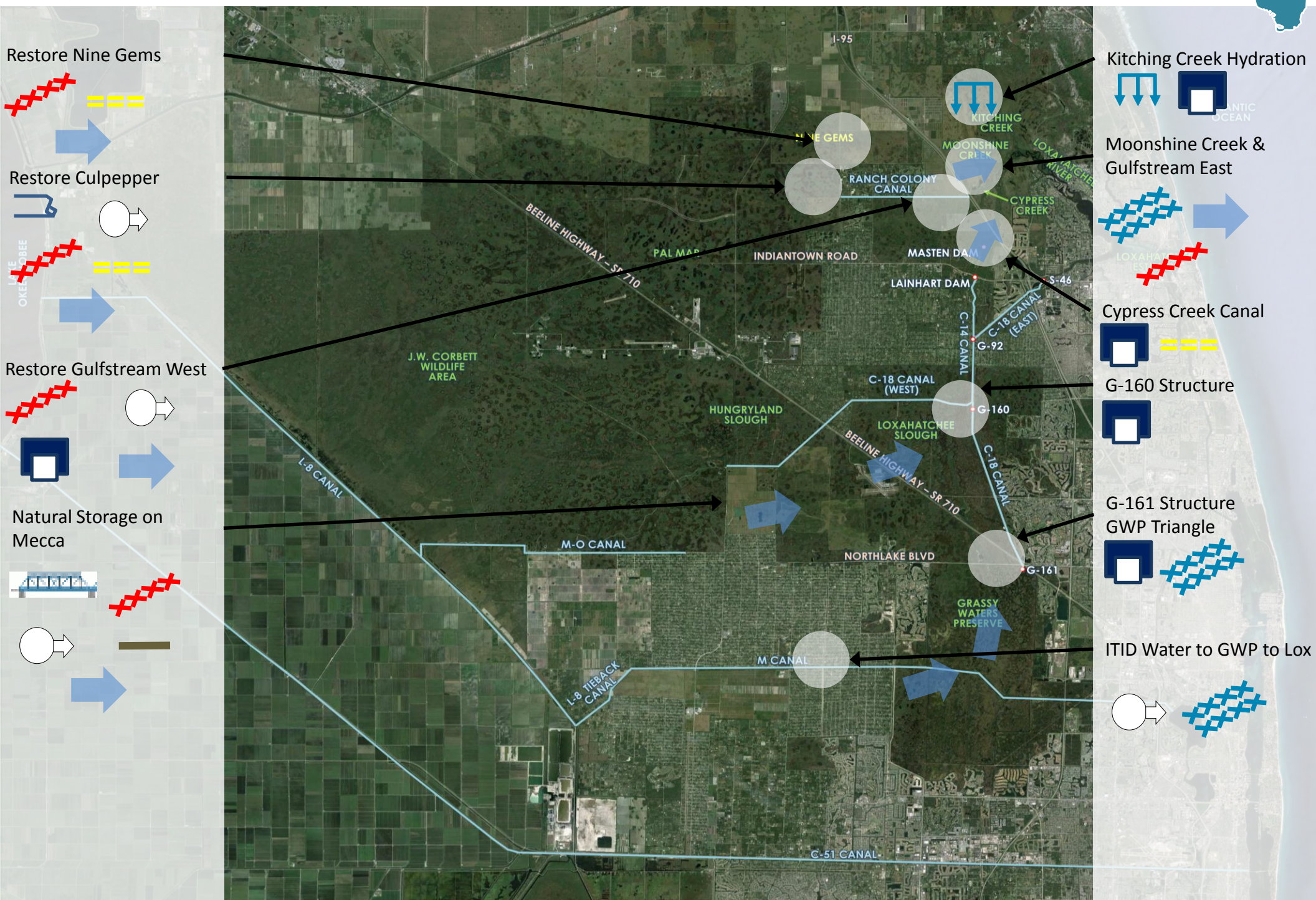


# LOXAHATCHEE RIVER WATERSHED RESTORATION (LRWR) PROJECT

## COMPREHENSIVE EVERGLADES RESTORATION PLAN (CERP)

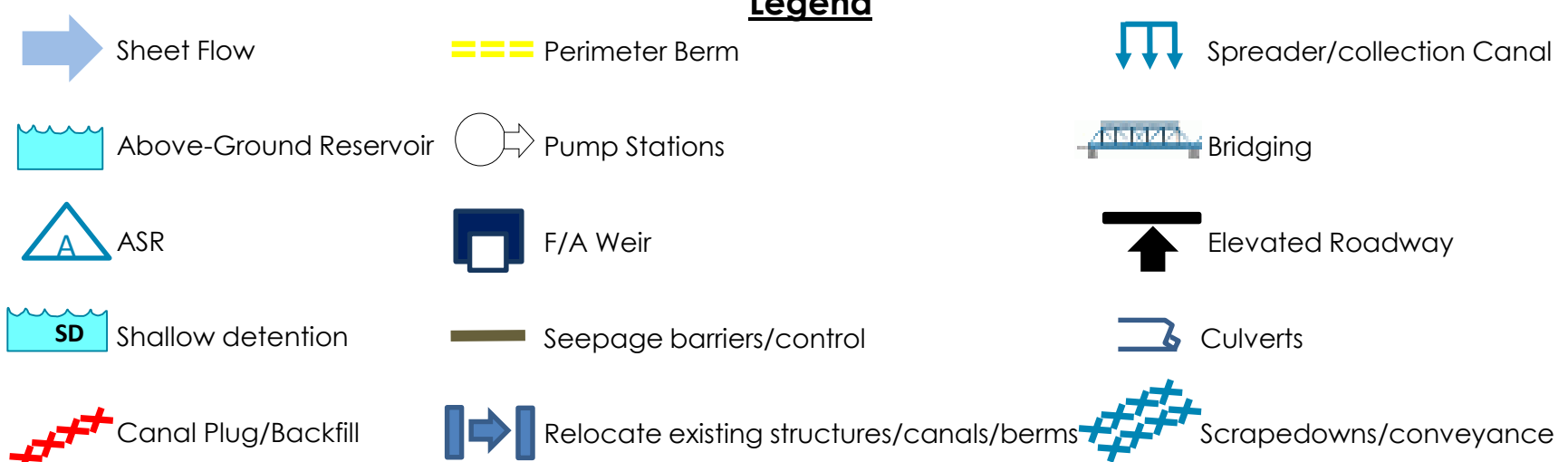
ALTERNATIVE #8

March 2016



3E	<b>Kitching Creek Hydration</b>	Spreader Canal at Jenkins Ditch at JDSP northern boundary Weir or plug on Jenkins ditch near connection with Kitching Creek
	<b>Moonshine Creek &amp; Gulfstream East</b>	Connect HSLCD ditch to Moonshine Cr; Clear veg in Moonshine Cr; Fill Gulfstream Ditch; Regrade to historic topography
	<b>Cypress Creek Canal</b>	Replace Cypress Creek Canal Weir Raise Northern Berm at Ranch Colony
	<b>Restore Gulfstream West</b>	Partial backfill & relocate southern end of HSLCD canal; Small pump; Flow through marsh; Discharge structure
	<b>Restore Nine Gems (PalMar East)</b>	Plug N-S ditches; Remove pipes; Improve northern berm; Construct western berm
	<b>Culpepper (and edge of PalMar)</b>	Automate twin 84, Improve eastern berm; Backfill northern canal; Pumps at Thomas Farm; Redirect drainage to north side of Nine Gems
2H	<b>Natural storage on Mecca</b>	Restore Natural Topography; Bridge/Culverts for Beeline; Backfill Interior Canals in Corbett; Pump to protect Caloosa
1B	<b>G-160</b>	Restore hydroperiod in Lox Slough
	<b>G-161</b>	GWP water to Lox Slough
	<b>GWP triangle</b>	Improve Connectivity
	<b>ITID water to GWP to Lox</b>	Pump, IDIT to M-canal, to GWP

### Legend



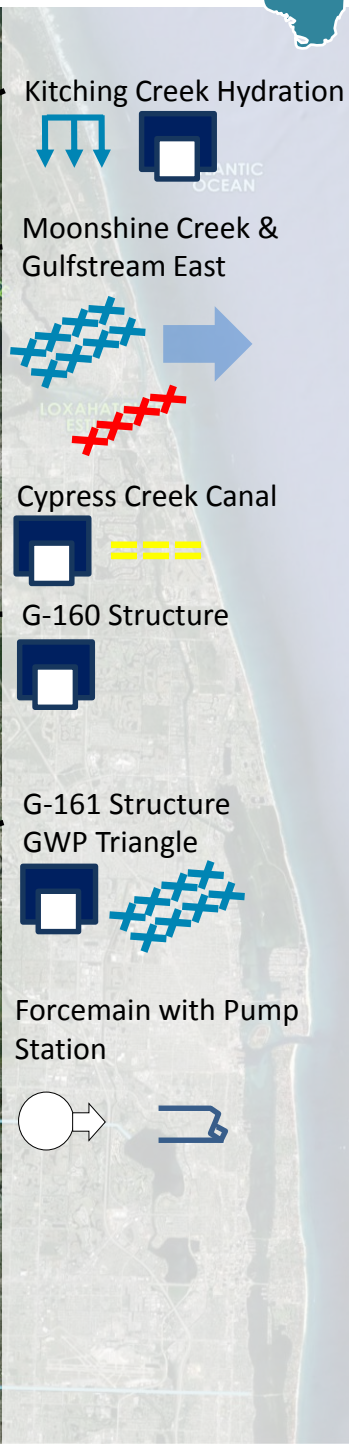
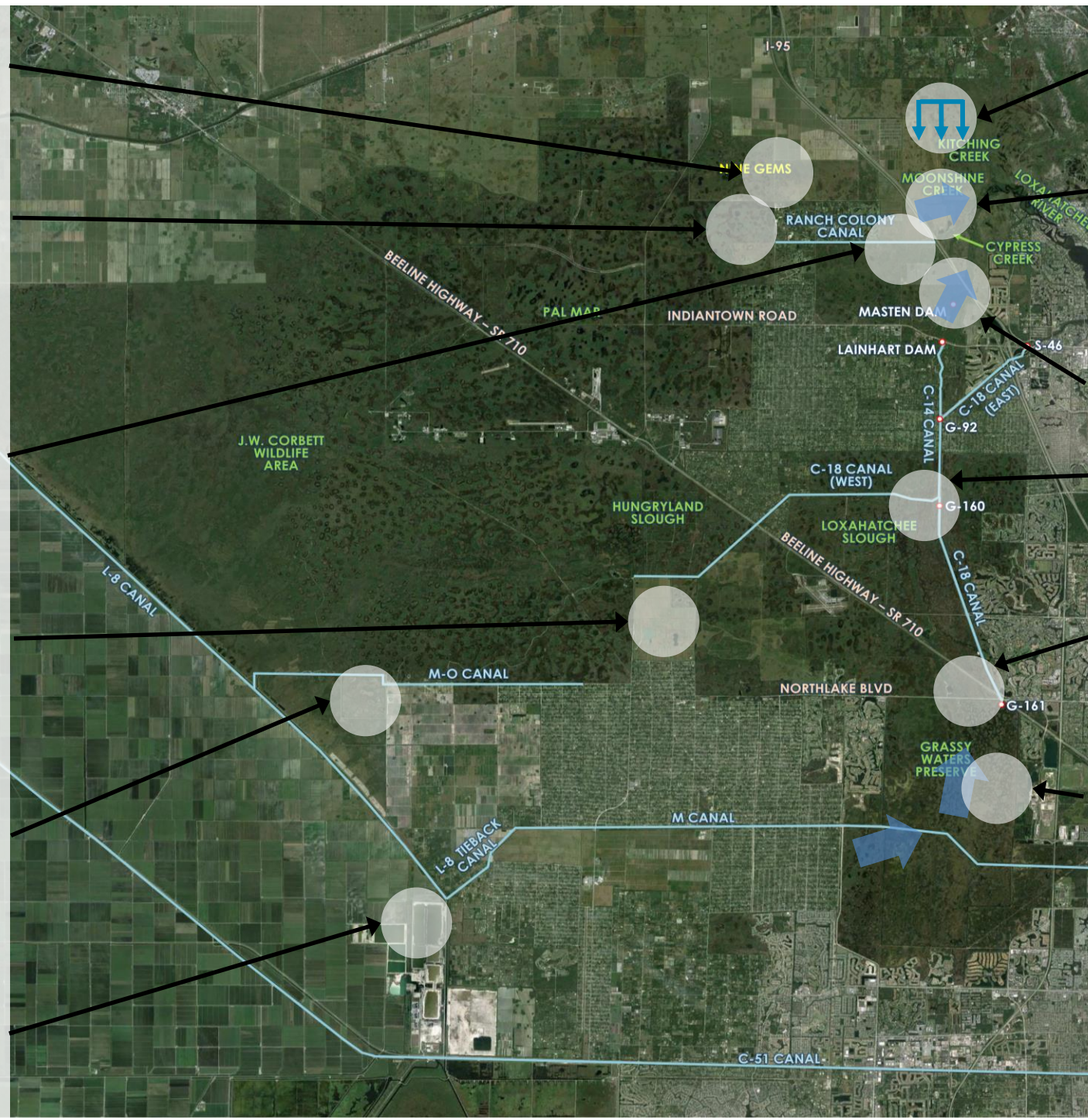


# LOXAHATCHEE RIVER WATERSHED RESTORATION (LRWR) PROJECT

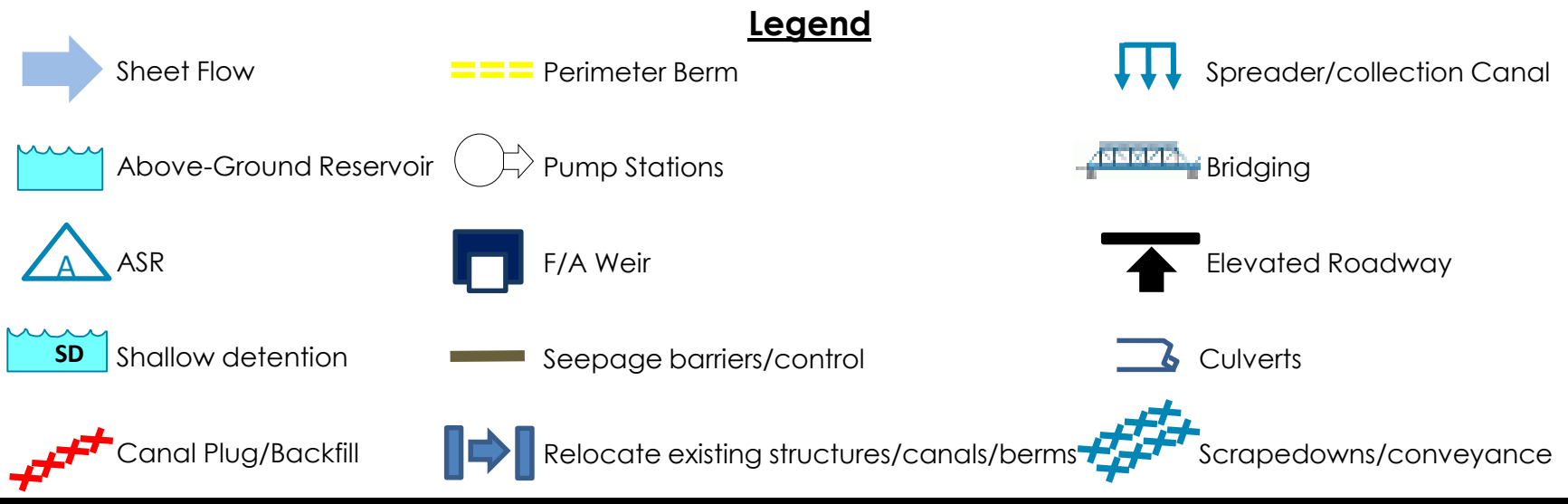
## COMPREHENSIVE EVERGLADES RESTORATION PLAN (CERP)

ALTERNATIVE #9

March 2016



<b>3E</b>	<b>Kitching Creek Hydration</b>	Spreader Canal at Jenkins Ditch at JDSP northern boundary Weir or plug on Jenkins ditch near connection with Kitching Creek
	<b>Moonshine Creek &amp; Gulfstream East</b>	Connect HSLCD ditch to Moonshine Cr; Clear veg in Moonshine Cr; Fill Gulfstream Ditch; Regrade to historic topography
	<b>Cypress Creek Canal</b>	Replace Cypress Creek Canal Weir Raise Northern Berm at Ranch Colony
	<b>Restore Gulfstream West</b>	Partial backfill & relocate southern end of HSLCD canal; Small pump; Flow through marsh; Discharge structure
	<b>Restore Nine Gems (PalMar East)</b>	Plug N-S ditches; Remove pipes; Improve northern berm; Construct western berm
	<b>Culpepper (and edge of PalMar)</b>	Automate twin 84, Improve eastern berm; Backfill northern canal; Pumps at Thomas Farm; Redirect drainage to north side of Nine Gems
<b>TASK FORCE OPTION</b>		

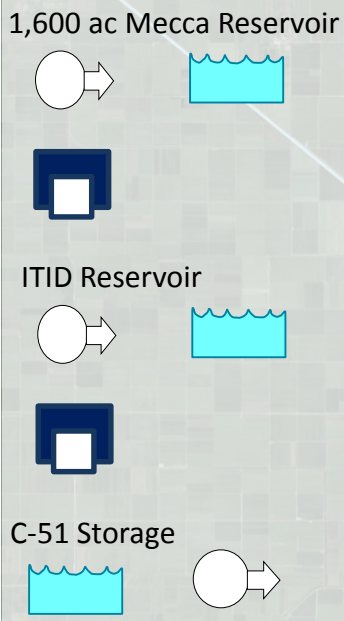
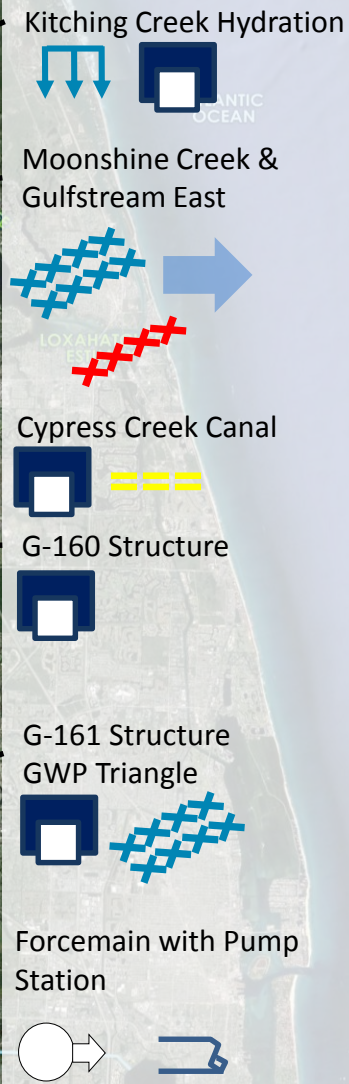
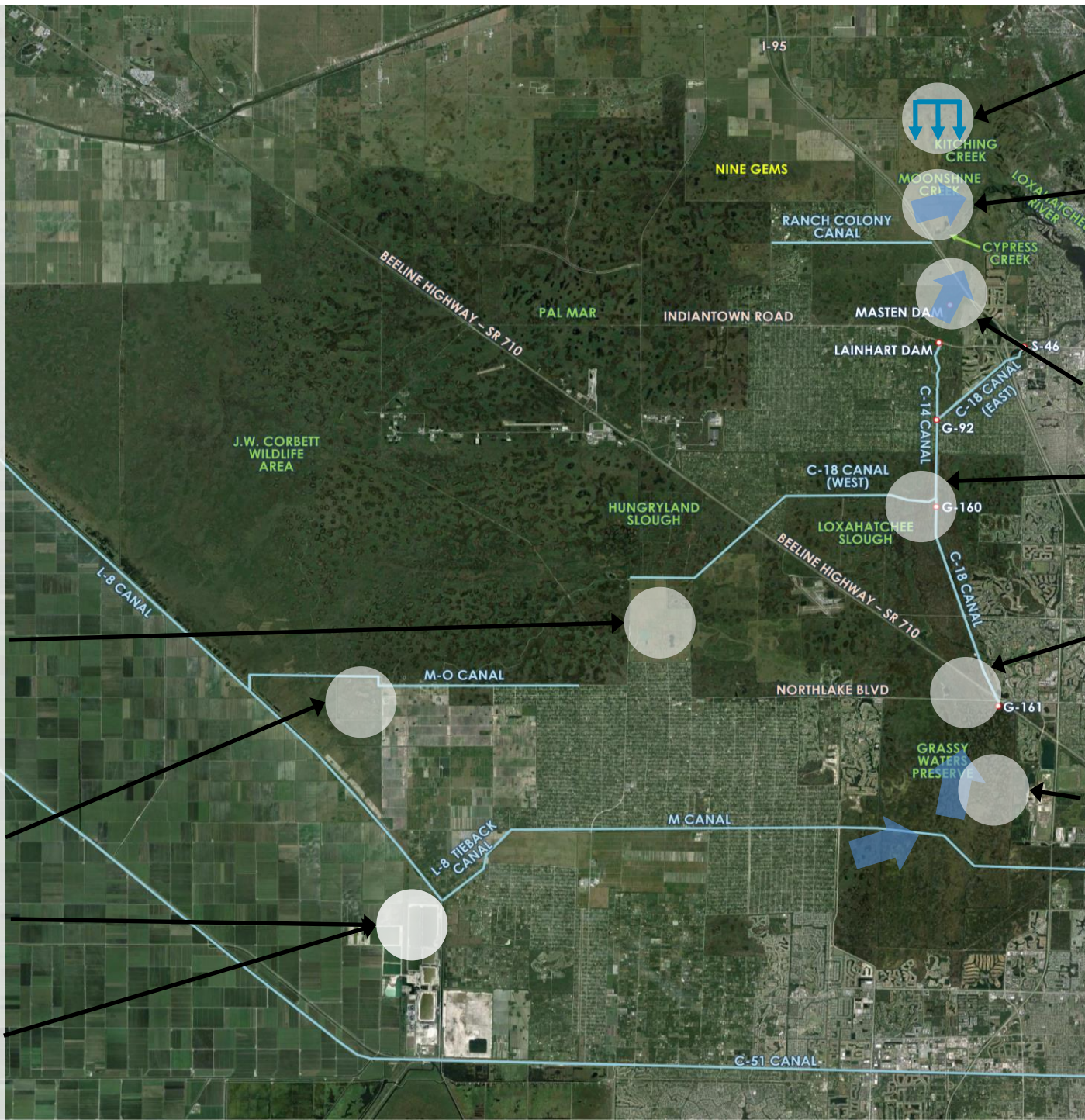


# LOXAHATCHEE RIVER WATERSHED RESTORATION (LRWR) PROJECT

## COMPREHENSIVE EVERGLADES RESTORATION PLAN (CERP)

ALTERNATIVE #10

March 2016



<b>3B</b>	<b>Kitching Creek Hydration</b>	Spreader Canal at Jenkins Ditch at JDSP northern boundary Weir or plug on Jenkins ditch near connection with Kitching Creek
	<b>Moonshine Creek &amp; Gulfstream East</b>	Connect HSLCD ditch to Moonshine Cr; Clear veg in Moonshine Cr; Fill Gulfstream Ditch; Regrade to historic topography
	<b>Cypress Creek Canal</b>	Replace Cypress Creek Canal Weir Raise Northern Berm at Ranch Colony
<b>TASK FORCE OPTION</b>		

