

# **ENVIRONMENTAL ASSESSMENT**

## **Anclote River, Florida Project and Gulf Intracoastal Waterway (GIWW) Cut P-41 Pinellas & Pasco Counties MAINTENANCE DREDGING AND DREDGED MATERIAL PLACEMENT**

**EAXX-202-00-K3P-1765294248**

# **APPENDIX B**

## **Environmental Consultations**

**U.S. ARMY CORPS OF ENGINEERS**

**JACKSONVILLE DISTRICT**



**U.S. Army Corps of Engineers  
JACKSONVILLE DISTRICT**

---



**DEPARTMENT OF THE ARMY**  
U.S. ARMY CORPS OF ENGINEERS, JACKSONVILLE DISTRICT  
701 SAN MARCO BOULEVARD  
JACKSONVILLE, FLORIDA 32207

May 5, 2026

Planning and Policy Division  
Environmental Branch

Jose Rivera  
Division Manager, Environmental Review Florida  
U.S. Fish and Wildlife Service  
777 37th Street, Suite D-101  
Vero Beach, Florida

Dear Mr. Rivera:

Pursuant to the National Environmental Policy Act of 1969, as amended (NEPA), and the U.S. Army Corps of Engineers, Jacksonville District (Corps) Regulation (32 CFR 651), the Corps is developing an Environmental Assessment (EA) and Finding of No Significant Impact (FONSI) for the proposed Anclote River, Florida project and Gulf Intracoastal Waterway (GIWW) Cut P-41 (project), NEPA ID: EAXX-202-00-K3P-1765294248. The purpose of the proposed actions is to address maintenance dredging, within Anclote River, FL and The GIWW Cut P-41 to maintain safe and efficient vessel navigation throughout the federal channels. This consultation is being sent prior to the release of the EA and proposed FONSI, and a separate letter will be sent for the Notice of Availability of the EA and proposed FONSI. In accordance with the provisions of Section 7 of the Endangered Species Act (ESA), as amended, the Corps is hereby re-initiating (FWS Log No. 04EF1000-2019-I-0700) informal consultation with the U.S. Fish and Wildlife Service (USFWS) on the proposed action.

The Anclote River, Florida Project and GIWW Cut P-41 EA assesses various alternatives that evaluate environmental effects of the maintenance of the federal channel and GIWW, and placement options. Alternatives 2A ("Maintenance Dredging of Anclote Federal Channel and GIWW"), 3C ("In-water placement in the channel Cut 1 and Cut 2"), and 3D ("In-water placement Three Rookers Island") are carried forward as the Preferred Alternative (see Enclosure for map) which is summarized below:

a. Maintenance dredging of Cuts 1-14, the turning basin and the GIWW Cut P-41 would occur on an as needed basis. The authorized depth of the channel is 9 feet (ft) plus 2 ft of allowable over depth. The authorized width is 100 ft. If Cut 2A becomes authorized, Alternative 2B will be the Preferred Alternative which will add Cut 2B to the authorized maintenance dredging.

b. Material placement options include in-water placement, within portions of the channel and Three Rookers Island. Placement options would be selected based on project needs (ex. permitting, etc.) and capacity of the placement area.

- There are three locations within the channel with capacity for placement, where up to 45,000 cubic yards (CY) of material could be placed to -10 ft mean lower low water (MLLW). The placement footprint is approximately 636,000 sq ft or 14.6 acres.
- Three Rookers Island placement is 2,500 ft by 1,500 ft. There is capacity for 95,000 CY of material that can be placed up to -8 ft MLLW

The proposed action has evaluated impacts listed on the IPAC official species list (attached). Listed species and/or designated critical habitat (DCH) and proposed critical habitat (PCH) under the jurisdiction of the USFWS which may occur in the vicinity of the proposed work include:

Common Name	Scientific Name	Federal Status	Effect Determination
Rufa Red Knot	<i>Calidris canutus rufa</i>	Threatened	MANLAA
Piping Plover	<i>Charadrius melodus</i>	Threatened	MANLAA
Gulf Sturgeon	<i>Acipenser oxyrinchus desotoi</i>	Threatened	MANLAA
Florida manatee	<i>Trichechus manatus latirostris</i>	Threatened	MANLAA

*MANLAA = May Affect, but is not Likely to Adversely Affect; Designated critical habitat, Proposed critical habitat*

The Corps determined that the proposed action meets eligibility criteria for the piping plover to be covered by the P<sup>3</sup>BO and is seeking concurrence from the USFWS with these MANLAA determinations based on the information provided in the attached enclosure.

In addition to requesting concurrence with the effect determinations, the Corps respectfully submits the enclosed Memorandum for the Record (MFR) for USFWS consideration and signature. The MFR documents an informal understanding between the two agencies to utilize the proposed action for ESA and NEPA review process to complete coordination responsibilities under the Fish and Wildlife Coordination Act (16 U.S.C. 661 *et seq.*, March 10, 1934, as amended 1946, 1958, 1978, and 1995) (FWCA). This agreement will avoid duplicate analysis and documentation as authorized under 40 CFR sections 1500.4 (k), 1502.25, 1506.4.

The Corps respectfully requests that USFWS provide concurrence to the Corps' effect determinations (see enclosure for detailed evaluation) and sign the enclosed MFR within 60 days of the receipt of this letter. Questions or comments on consultation may be submitted to the Environmental Branch, Coastal Section at the letterhead address or to Ms. Rachel Case, by telephone at 904-232-1035 or via email at [rachel.s.case@usace.army.mil](mailto:rachel.s.case@usace.army.mil).

Sincerely,

Gretchen Ehlinger, Ph.D.  
Chief, Environmental Branch

**Anclote River, Florida Project and GIWW Cut P-41  
Pinellas and Pasco Counties, Florida  
Environmental Assessment (EA)  
U.S. Fish and Wildlife Service (USFWS)  
Endangered Species Act (ESA) Informal Consultation**

**May 2026**

---

## **Introduction**

To comply with Section 7 of the Endangered Species Act of 1973 (ESA), as amended (16 U.S.C. 1536), the U.S. Army Corps of Engineers, Jacksonville District (Corps) respectfully requests a letter of concurrence from the U.S. Fish and Wildlife Service (USFWS) on the effect determinations for the proposed actions for the Anclote River, Florida Project and Gulf Intracoastal Waterway (GIWW) Cut P-41 Environmental Assessment (EA) (NEPA ID: EAXX-202-00-K3P-1765294248).

The EA evaluates various alternatives and associated environmental effects of the maintenance dredging of the Anclote federal channel, the GIWW, and dredged material placement options. Alternatives 2A (“Maintenance Dredging of Anclote Federal Channel and GIWW”), 3C (“In-water placement in the channel”), and 3D (“In-water placement Three Rookers Island”) are carried forward as the Preferred Alternative which best meets the Anclote River, Florida Project and GIWW Cut P-41 objectives.

The Corps determined that the proposed project may affect but is not likely to adversely affect (MANLAA), Florida manatees (*Trichechus manatus latirostris*) and rufa red knot (*Calidris canutus rufa*), and Gulf Sturgeon (*Acipenser oxyrinchus desotoi*). In addition, proposed critical habitat (PCH) for the Florida manatee is within the proposed action area, and the Corps has determined that the project actions MANLAA. No critical habitat for piping plover is located within the project area or will be affected by the project. The Corps has determined that the proposed action meets eligibility criteria for coverage by the Piping Plover Programmatic Biological Opinion (P<sup>3</sup>BO) for potential effects to piping plover. Therefore, the evaluation of piping plover is not discussed in this consultation.

Relevant to this concurrence request, the Corps provide the following information:

- Project Backgrounds.
- Description of the Project Location and Proposed Action.
- Listed Species and Critical Habitat Under USFWS Jurisdiction.
- Potential Effects, Efforts to Eliminate/Avoid Impacts, and The Corps’ Effect Determinations.

### **Project Backgrounds**

This consultation is being sent prior to the release of the draft EA and proposed Finding of No Significant Impact (FONSI). A Notice of Availability of the EA and proposed FONSI are anticipated to be released in spring 2026. In accordance with the provisions of Section

7 of the ESA, as amended, the Corps hereby reinitiating (FWS Log No. 04EF1000-2019-I-0700) informal consultation with the USFWS on the proposed actions.

### ***Project Authorizations and History***

The Anclote River, Florida project was authorized in 1899, and initial project construction occurred prior to the enactment of the National Environmental Policy Act (NEPA) and the ESA. The inner channel (Cuts 3-14 and the turning basin) was evaluated under NEPA and existing environmental laws in the 2019 Anclote River, Florida Project EA. GIWW Cut P-41 was authorized under Section 2 of the River and Harbors Act of 1945 (PL 79-14). The dredging and operation and maintenance (O&M) of Anclote River, Florida Project Cut 1, Cut 2, and GIWW Cut P-41 were not included in the 2019 EA.

. The 2019 EA for the Anclote River, Florida project covered material placement in an upland dredged material management area (DMMA) that is currently unavailable for use. Additional analysis is needed to evaluate new placement areas. Initial construction of the Anclote River, FL Project started in 1899. The turning basin was constructed in 1927, and channel construction continued from 1935 through 1945. In 1958 the turning basin was constructed to its current limits. Federal O&M dredging (inner channel Cuts 3-14 and turning basin) has occurred five times since initial construction - in 1948, 1969, 1973, 1999, and 2023. In 1999 and 2023, material was placed within the upland DMMA, whereas material was previously side cast. The most recent dredging event occurred in 2024 by the non-federal sponsor (NFS), the City of Tarpon Springs under Florida Department of Environmental Protection (FDEP) permit 52-0199763-002. In 2023, the District Commander approved realignment of Cut 1, which extended Cut 1 to intersect with the GIWW Cut P 41; the extension is called Cut 1A. No dredging was needed for the realignment.

Cuts 1, 2, and the GIWW Cut P-41 have not been dredged, by federal or local government, since initial construction and dredging of these areas has not been evaluated under the NEPA, ESA, or other pertinent environmental laws.

### ***Consultation History***

In 2019, an EA for maintenance dredging of the inner channel Cuts (3-14) and turning basin of the Anclote River, Florida Project and placement in the upland DMMA were completed. An informal consultation with USFWS was initiated during the development of the 2019 EA and completed on August 6, 2019 (FWS Log No. 04EF1000-2019-I-0700). The consultation covered piping plover, rufa red knot, eastern indigo snake, and the Florida manatee. The Corps determined that the project would have no effect on the piping plover and rufa red knot, and that the project MANLAA Eastern indigo snakes. The USFWS concurred with these determinations. The Corps determined that the project MANLAA Florida manatees, USFWS concurred and included additional conservation measures due to the Important Manatee Area (IMA) that was addressed in the previous consultation as a warm water aggregation area within the project area. In addition to implementation of the Standard Manatee Conditions for In-Water Work throughout the project area, the following additional conservation measures were required for work within

the IMA: no dredging between November 15 and March 31 within the IMA, and gravity-release of the (clamshell) bucket only at the water's surface and only after confirmation that there are no manatees within the safety distance identified in the standard construction conditions (or a 75-foot buffer if dredging is authorized at night).

## **Description of the Project Location and Proposed Action**

### ***Project Purpose and Need***

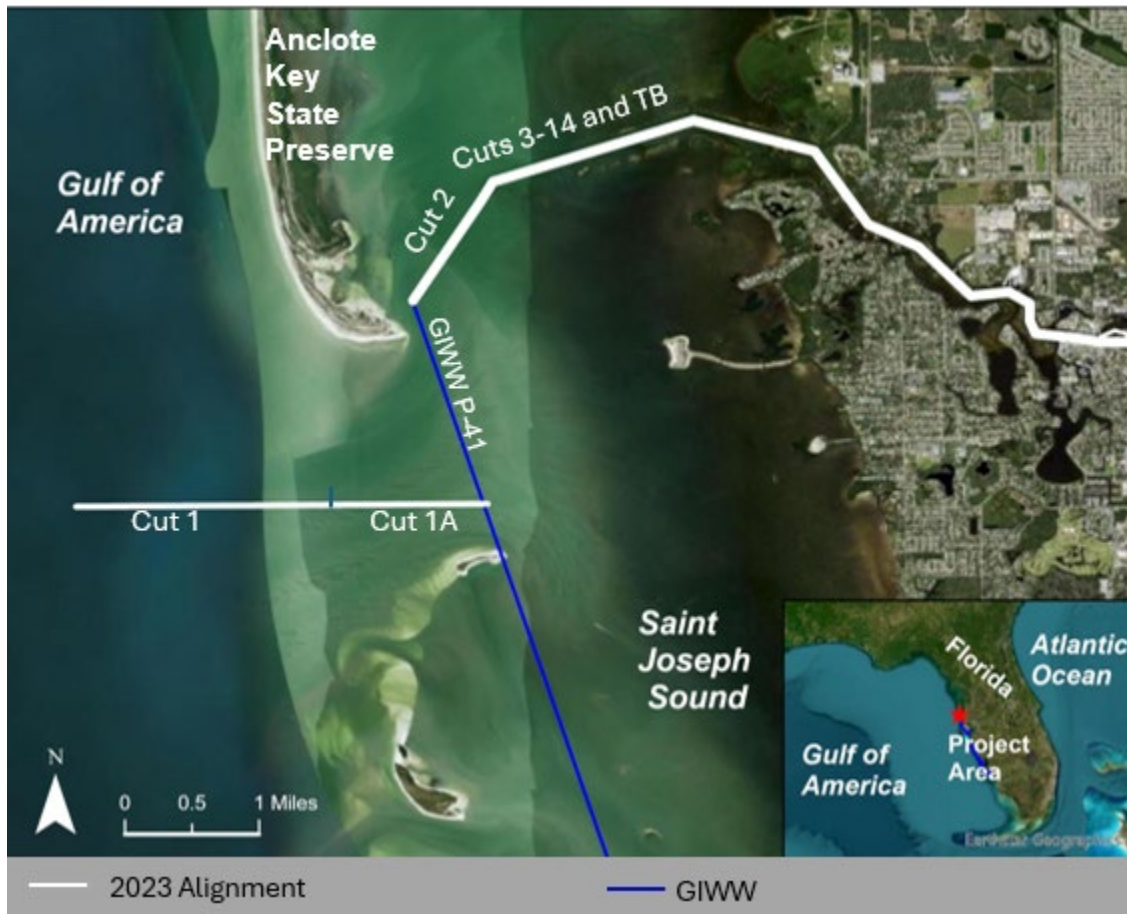
The purpose of the proposed actions to the Anclote River, Florida project and the GIWW are to maintain safe and efficient navigation in the federal channels.

### ***Description of Project Location***

The projects are in Anclote River on the west coast of Florida bordering both Pinellas and Pasco Counties. It is approximately 20 miles north of Tampa (Figure 1). Beginning in the Tarpon Springs turning basin, the 9.1 mile-long federal channel runs along the Anclote River, through Saint Joseph Sound where it intersects the GIWW Cut P 41 and empties into the Gulf of America (Figure 2).



**Figure 1. Map (left) displays the project area (red star) within the State of Florida. Map (right) is a zoomed in image of the project areas showing where the county line is located.**



**Figure 2. Map of the current Anclote River, Florida project channel alignment and the GIWW Cut P-41. The GIWW (blue) intersects the Anclote River federal channel. The inset displays where the project is within the State of Florida..**

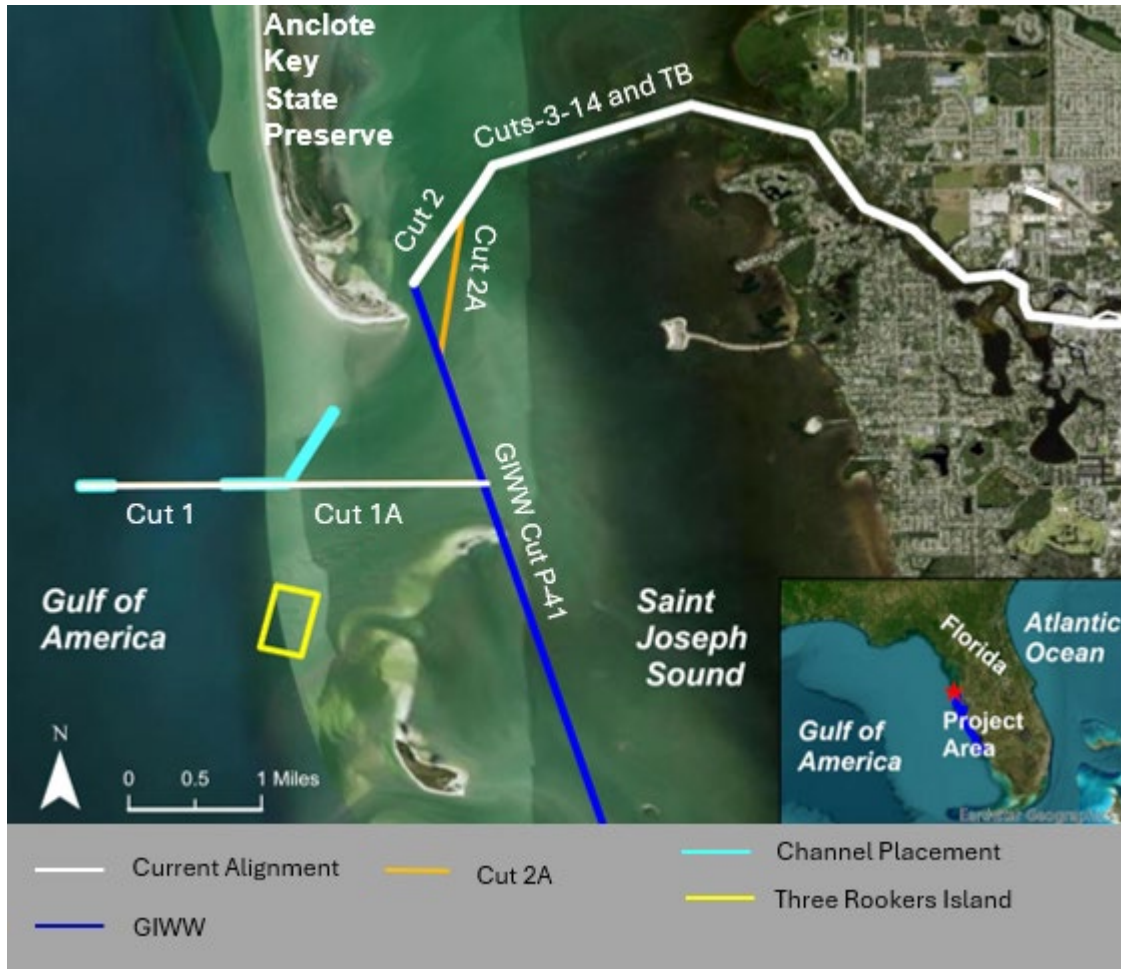
### ***Details of the Preferred Alternative***

The Preferred Alternative includes:

- a. O&M dredging of Anclote River, Florida project Cuts 1-14, the turning basin, and GIWW Cut P-41 would occur on an as needed basis. The authorized depth of the channel is 9 feet (ft) plus 2 ft of allowable overdepth. The authorized width of the channel is 100 ft. If Cut 2A becomes authorized Alternative 2B will be the Preferred Maintenance Dredging Alternative, adding Cut 2B to the authorized maintenance dredging.
- b. Material placement options include in-water placement, within portions of the channel and Three Rookers Island (Figure 3). Placement options would be selected based on needs (e.g., permitting, etc.) and capacity of the placement area.
  - o There are three locations within the channel with capacity for placement, where up to 45,000 cubic yards (CY) of material could be placed to -10ft,

which mean lower low water (MLLW). The placement footprint is approximately 636,000 sq ft or 14.6 acres.

- Three Rookers Island placement is 2,500 ft by 1,500 ft. There is capacity for 95,000 CY of material that can be placed up to -8 ft MLLW.



**Figure 3. Map of the Preferred Alternative features.** The Anclote federal channel is shown in white, the GIWW Cut P-41 is in royal blue and Cut 2A is in orange. The placement alternatives include in-water placement at Three Rookers Island (yellow) and in-water placement within the channel and previous channel cuts (light blue).

### **Listed Species and Critical Habitat Under USFWS Jurisdiction**

There are four threatened and endangered (T&E) species under USFWS' jurisdiction that may occur in the proposed action area. The proposed action area includes established DCH and PCH for Florida manatee. The T&E species were identified within the proposed

action area (Table 1) using the USFWS Information for Planning and Consultation (IPAC) tool (attached). This consultation evaluates the potential impacts of the proposed action on these T&E species. These species and any associated critical habitat are listed below in Table 1.

**Table 1. Species listed as Threatened or Endangered Species under the Endangered Species Act that may occur in the project area.**

Common Name	Scientific Name	Federal Status	Agency
Rufa Red Knot	<i>Calidris canutus rufa</i>	Threatened	USFWS
Piping Plover	<i>Charadrius melodus</i>	Threatened	USFWS
Gulf Sturgeon	<i>Acipenser oxyrinchus desotoi</i>	Threatened	USFWS & NMFS
Florida Manatee <sup>DP</sup>	<i>Trichechus manatus latirostris</i>	Threatened	USFWS

<sup>D</sup> Designated Critical Habitat (DCH); <sup>P</sup> Proposed Critical Habitat

**Potential Effects to Listed Species, Efforts to Eliminate/Avoid Impacts; and The Corps Effect Determination**

**Rufa red knot**

The rufa red knot (*Calidris canutus rufa*) was listed as a threatened species under the ESA in 2014. The Gulf Coast of Florida is an important wintering area for the *rufa* subspecies of the red knot (USFWS 2020). The red knot nests during the summers in Canada and the Great Lakes region, and winters in South America. Some individuals overwinter along the Gulf Coast, and others use it as a stopover location to refuel for the remainder of their migration. There were multiple sightings of rufa red knot at Anclote Key and Three Rookers Island in 2024 and 2025 in eBird (eBird 2025).

**DETERMINATIONS**

Birds may be temporarily disturbed by noise and the presence of equipment from O&M dredging or material placement, or they may avoid the area. These effects would cease upon completion of work. While the P<sup>3</sup>BO is written for piping plover, the opinion will also provide protection to the Rufa red knot due to the similarities in habitat and lifestyle between the two species. This proposed action will implement conservation recommendations of the P<sup>3</sup>BO. Implementation of these minimization measures would protect rufa red knot that may be in the proposed action area. Therefore, the proposed action area MANLAA rufa red knot.

**Manatees**

Manatees reside and feed mainly in the estuarine areas and around inlets and are only occasionally observed in the open ocean. They prefer warmer water and migrate to springs and power plant discharge canals during the colder months. Manatees are herbivores, feeding on seagrass and aquatic plants. Preferred habitats include nearshore

areas with underwater vegetation. Seagrass is abundant within the proposed action area. While the manatee population has improved in recent years, there continues to be many threats to the population. Humans are manatees' biggest threat due to growing pollution, red tide, boat strikes, and loss of habitat and food.

The Florida manatee (*Trichechus manatus latirostris*) has been protected by the State of Florida since 1893 by the Florida Manatee Sanctuary Act (§379.2431(2), Florida Statutes). In 1978, the state provided further protection by designating the entire state as a manatee sanctuary and providing signage and speed zones in Florida's waterways. Manatees receive federal protections under both the Marine Mammal Protection Act (MMPA), which prohibits the take of all marine mammals, and the ESA. The manatee was listed as endangered under the Endangered Species Preservation Act of 1966 (32 FR 4001) and was subsequently grandfathered into the List of Endangered and Threatened Wildlife under the ESA in 1973. More recently, they were downlisted from endangered to threatened in May 2017 (82 FR 16668).

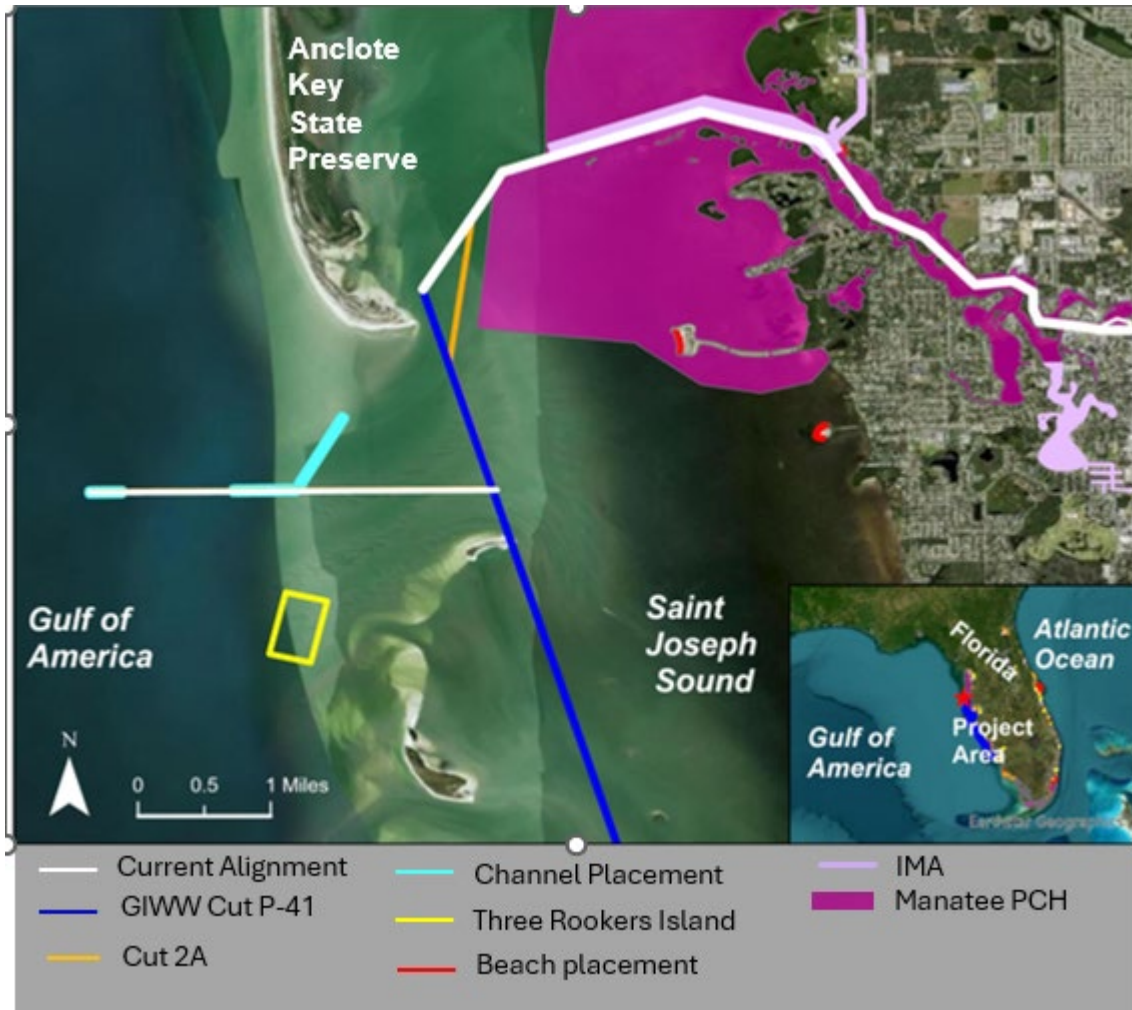
Florida manatee DCH was designated in 1976 (41 FR 41914) and 1977 (42 FR 47840) but is not within the range of the proposed action area (Figure 4). Newly proposed critical habitat (PCH; 89 FR 78134) was revised based on scientific data, and biological and essential features were identified in 2023. The proposed action would occur within PCH unit FL-03: Withlacoochee Bay to Anclote River (Figure 4). The total proposed PCH in the State of Florida is 1,904,292 acres and this unit contains 364,584 acres. Essential features to the conservation of the Florida manatee include areas of water warmed by natural process, established use throughout the winter each year, areas supported by submerged or emergent vegetation, and other established manatee aggregation areas. The inner portions of the federal channel (Cuts 3-14) are within an IMA that USFWS identified as areas of significance (Figure 5). O&M dredging will continue within Cuts 3-14 of the channel and apply the previous completed consultation with USFWS to this portion of the project (FWS Log No. 04EF1000-2019-I-0700).

## **DETERMINATIONS**

O&M dredging will only occur to maintain the authorized channel depth. There are a potential risk of vessel strikes or interactions with ESA-listed species during O&M activities.. Risk during O&M dredging and placement is reduced through implementation of USFWS 2011 Standard Manatee Conditions for In-water Work. Any potential for adverse impacts due to dredging will cease with the completion of the proposed action. The additional channel and placement areas are outside of the IMA. In addition, seagrass within the channel may be impacted, but appropriate mitigation will be performed (see Appendix H of the 2026 EA). Therefore, the Corps determination for Florida manatees is that the Preferred Alternative MANLAA Florida manatee.

The proposed action will impact less than 19% of the total manatee PCH within the State of Florida. The essential features of PCH include areas of warmer water by natural processes or established aggregation areas, which exist nearby within the IMA. The project will not modify any essential features to manatee PCH but may temporarily

disturb the habitat during O&M dredging or placement activities. Therefore, the proposed action MANLAA the proposed PCH.



**Figure 4. Map of proposed USFWS manatee PCH and proposed project activities.**

### **Gulf Sturgeon**

Gulf sturgeon (*Acipenser oxyrinchus desotoi*) was listed as threatened under the ESA in 1991 (56 FR 49653) and is jointly managed by the National Marine Fisheries Service and USFWS. Their range is from Lake Pontchartrain in Louisiana to Tampa Bay in Florida. Gulf sturgeon can live up to 20 or 25 years (NOAA 2025). They spend time in both fresh, estuarine, and marine waters depending on the time of year and life stage (NOAA 2025). They feed on invertebrates, including crustaceans, worms, and mollusks.

## ***DETERMINATION***

Gulf sturgeons may experience impacts during O&M dredging from increases in noise, turbidity, and vibration. There will also be an increase in large vessels within the proposed action area posing a risk of vessel strikes or interactions with Gulf sturgeon; however, this risk is reduced through implementation of the protected species construction conditions as well as the applicable minimization measures outlined in Environmental Commitments (see Section 6.1 of the EA). Additionally, this species is highly mobile and, with reduced vessel speeds, would likely be able to avoid equipment working in this area. Any potential for adverse impacts due to the proposed action will cease with the completion of the work. Therefore, the Corps determined that the proposed action is MANLAA for Gulf sturgeons.

## ***Efforts to Eliminate/Avoid Impacts***

### ***Environmental Commitments***

Avoidance and minimization measures will be implemented to eliminate or significantly reduce the potential impacts associated with the proposed action, to include application of those in the USFWS 2011 Standard Manatee Conditions for In-water Work. The commitments described in this section will be included in the proposed actions plans and specifications.

#### General

- a. O&M activities will be managed to minimize interference with, disturbance of, and damage to fish and wildlife. Prior to the start of work, the Contractor will submit its Environmental Protection Plan (EPP) to the Corps for review. The EPP will include protective measures for species that require specific attention.
- b. Adverse effects to T&E species will be avoided and/or minimized. T&E species protection criteria will be included in the Contractor's EPP.
- c. Turbidity curtains, if used, should be made of material in which protected species cannot become entangled and regularly monitored to avoid protected species' entrapment. All turbidity curtains and other in-water equipment should be properly secured with materials that reduce the risk of protected species entanglement and entrapment.
- d. Water quality (turbidity) will be monitored at the dredging and placement sites in compliance with the requirements of Section 401 Water Quality Certification obtained from the FDEP. If turbidity values at the dredging site exceed the State Water Quality Standard for turbidity (29 NTU above background per 62-302, F.A.C.) at the edge of the permitted mixing zone (150 meters), activities will be suspended and will not continue until water quality meets state standards.

#### Manatees

- a. The proposed action will comply with the 2011 USFWS Standard Manage Conditions for In Water Work. All personnel associated with the project will be instructed about the presence of manatees and manatee speed zones, and the need to avoid collisions with manatees. Personnel will be advised that there are civil and criminal penalties for harming, harassing, or killing manatees, which are protected under state law and the MMPA and ESA.
- b. Vessels associated with the proposed action shall always operate at “Idle Speed/No Wake” while in the immediate area and while in water where the draft of the vessel provides less than a four-foot clearance from the bottom. All vessels will follow routes of deep water whenever possible.
- c. Siltation or turbidity barriers shall be made of material in which manatees cannot become entangled, shall be properly secured, and shall be regularly monitored to avoid manatee entanglement or entrapment. Barriers must not impede manatee movement.
- d. All on-site personnel are responsible for observing water-related activities for the presence of manatee(s). All in-water operations, including vessels, must be shut down if a manatee(s) comes within 50 feet of the operation. Activities will not resume until the manatee(s) has moved beyond the 50-foot radius of the project operation, or until 30 minutes elapses if the manatee(s) has not reappeared within 50 feet of the operation. Animals must not be herded away or harassed into leaving.
- e. Temporary signs concerning manatees will be posted prior to and during all in-water project activities. All signs are to be removed by the permittee upon completion of the project. One sign which reads *Caution: Manatee Habitat* must be posted. A second sign measuring at least 8 ½" by 11" explaining the requirements for “Idle Speed/No Wake” and the shutdown of in-water operations must be posted in a location prominently visible to all personnel engaged in water-related activities.
- f. Any collision with or injury to a manatee will be reported immediately to the Florida Fish and Wildlife Conservation Commission (FWC) Manatee Hotline (1-844-404-FWCC (3922)) and [imperiledspecies@myFWC.com](mailto:imperiledspecies@myFWC.com) and the USFWS Vero Beach Field Office (772-562-3909).

## 4.0 References

- eBird. 2025. Bird Basic Dataset. Cornell Lab of Ornithology, Ithaca, New York. <https://ebird.org/home>. Website accessed July 29, 2025.
- National Oceanic and Atmospheric Administration (NOAA). 2025. “NOAA Fisheries – Species Directory: ESA Threatened & Endangered (Gulf Sturgeon,).” Fisheries.Noaa.gov. Website Accessed May 8, 2025. <https://www.fisheries.noaa.gov/specieshttps://www.fisheries.noaa.gov/species>

U.S. Fish and Wildlife Service (USFWS). 2020. Rufa Red Knot Species Status Assessment Report. North Atlantic-Appalachian Region (Interior Region 1). New Jersey Field Office, Galloway, New Jersey.



**DEPARTMENT OF THE ARMY**  
**U.S. ARMY CORPS OF ENGINEERS, JACKSONVILLE DISTRICT**  
**701 SAN MARCO BOULEVARD**  
**JACKSONVILLE, FLORIDA 32207**

CESAJ-PD-E

May 5, 2026

**MEMORANDUM FOR RECORD**

**SUBJECT:** Compliance With the Fish And Wildlife Coordination Act for the Draft Environmental Assessment (EA) For Anclote River, Florida Project And GIWW Cut P-41 (NEPA ID: EAXX-202-00-K3P-1765294248): Maintenance Dredging, And Material Placement

1. **PURPOSE.** To document the informal understanding between the U.S. Army Corps of Engineers, Jacksonville District (Corps), and the U.S. Fish and Wildlife Service (USFWS), Florida Ecological Services Office regarding compliance with the Fish and Wildlife Coordination Act (FWCA), as amended (16 U.S.C. §§ 661 – 666(e)).

2. **PROJECT LOCATION.** The project is located in the Anclote River on the west coast of Florida approximately 20 miles north of Tampa. The goal of the proposed federal actions is to provide safe and efficient vessel navigation through the Anclote River federal channel and GIWW Cut P-41.

3. **EA SUMMARY**

A. The EA evaluated various alternatives that would meet both the project goals and maintain safe and efficient navigation within the channel. The Preferred Alternative includes the following:

- Maintenance dredging of Cuts 1-14, the turning basin, and the GIWW-Cut P-41 would occur on an as needed basis. The authorized depth of the channel is 9 feet (ft) plus 2 ft of allowable over depth. The authorized width of the channel is 100 ft.
- Material placement options include in-water placement within portions of the channel and Three Rookers Island. Placement options would be selected based on project needs (e.g., volume, permitting, etc.) and capacity of the placement option.
  - There are three locations within the channel that would have capacity for placement (that is, up to 45,000 cubic yards (CY) of material could be placed to -10 ft mean lower low water (MLLW). The placement footprint is approximately 636,000 sq ft or 14.6 acres.
  - Three Rookers Island placement is 2,500 ft by 1,500 ft. There is capacity for 95,000 CY of material that can be placed up to -8 ft MLLW.

CESAJ-PD-E (ER 200-2-2)

SUBJECT: Compliance With The Fish And Wildlife Coordination Act For The Draft Environmental Assessment (EA) For Anclote River, Florida Project And GIWW-Cut P-41 (NEPA ID: EAXX-202-00-K3P-1765294248): Channel Realignment, O&M Dredging, And Material Placement

B. The Corps determined that the proposed project may affect, but is not likely to adversely affect (MANLAA) Piping plover (*Charadrius melodus*); rufa red knot (*Calidris canutus rufa*); swimming sea turtles (green sea turtle (*Chelonia mydas*), hawksbill sea turtle (*Eretmochelys imbricata*), loggerhead sea turtle (*Caretta caretta*), Kemp's ridley sea turtle (*Lepidochelys kempii*), and leatherback sea turtle (*Dermochelys coriacea*)); Florida manatees (*Trichechus manatus latirostris*); and Gulf sturgeon (*Acipenser oxyrinchus desotoi*). The proposed action MANLAA proposed critical habitat within unit FL-03 under these actions.

4. COORDINATION. The Fish and Wildlife Coordination Act (FWCA; 16 U.S.C. 661 et seq., March 10, 1934, as amended 1946, 1958, and 2019) requires Federal agencies to consult with USFWS regarding the impacts to fish and wildlife resources and the proposed measures to mitigate these impacts. Additional coordination authorities exist through the review process of the National Environmental Policy Act (NEPA; (42 U.S.C. §§ 4321-4347), January 1, 1970, as amended 1975 and 1982) and the Endangered Species Act of 1973 (ESA), as amended (7 U.S.C. § 136, 16 U.S.C. §§ 1531 – 1544) et seq. December 28, 1973, as amended 1976, 1977, 1978, 1979, 1980, 1981, 1982, 1983, 1984, 1986, 1988, 1990, 2000, 2002, 2003, 2008, 2014, and 2022). USFWS continues to coordinate and consult with the Corps through NEPA and the ESA in which impacts to fish, and wildlife resources are adequately addressed via these two authorities. USFWS will include comments relevant to FWCA in the USFWS review and response to this project's draft EA.

5. AGREEMENT. The Corps and USFWS agree to utilize the project's NEPA review process to complete coordination responsibilities under the FWCA. This agreement will avoid duplicate analysis and documentation and is consistent with Presidential Executive Order No. 13563 for Improving Regulation and Regulatory Review, released January 18, 2011.

---

Jose Rivera  
Division Manager, Environmental Review  
North Florida Ecological Services Field Office

---

Gretchen S. Ehlinger, Ph.D.  
Chief, Environmental Branch



## United States Department of the Interior



### FISH AND WILDLIFE SERVICE

Florida Ecological Services Field Office

777 37th St

Suite D-101

Vero Beach, FL 32960-3559

Phone: (352) 448-9151 Fax: (772) 562-4288

Email Address: [fw4flesregs@fws.gov](mailto:fw4flesregs@fws.gov)

<https://www.fws.gov/office/florida-ecological-services>

In Reply Refer To:

10/23/2025 13:53:43 UTC

Project Code: 2026-0007754

Project Name: Anclote River

Subject: List of threatened and endangered species that may occur in your proposed project location or may be affected by your proposed project

To Whom It May Concern:

The enclosed species list identifies threatened, endangered, proposed and candidate species, as well as proposed and final designated critical habitat, that may occur within the boundary of your proposed project and/or may be affected by your proposed project. The species list fulfills the requirements of the U.S. Fish and Wildlife Service (Service) under section 7(c) of the Endangered Species Act (Act) of 1973, as amended (16 U.S.C. 1531 *et seq.*).

New information based on updated surveys, changes in the abundance and distribution of species, changed habitat conditions, or other factors could change this list. Feel free to contact us if you need more current information or assistance regarding the potential impacts to federally proposed, listed, and candidate species and federally designated and proposed critical habitat.

**Please include your Project Code, listed at the top of this letter, in all subsequent correspondence regarding this project.** Please note that under 50 CFR 402.12(e) of the regulations implementing section 7 of the Act, the accuracy of this species list should be verified after 90 days. This verification can be completed formally or informally as desired. The Service recommends that verification be completed by visiting the IPaC website at regular intervals during project planning and implementation for updates to species lists and information. An updated list may be requested through the IPaC system by completing the same process used to receive the enclosed list.

The purpose of the Act is to provide a means whereby threatened and endangered species and the ecosystems upon which they depend may be conserved. Under sections 7(a)(1) and 7(a)(2) of the Act and its implementing regulations (50 CFR 402 *et seq.*), Federal agencies are required to utilize their authorities to carry out programs for the conservation of threatened and endangered

species and to determine whether projects may affect threatened and endangered species and/or designated critical habitat.

A Biological Assessment is required for construction projects (or other undertakings having similar physical impacts) that are major Federal actions significantly affecting the quality of the human environment as defined in the National Environmental Policy Act (42 U.S.C. 4332(2) (c)). For projects other than major construction activities, the Service suggests that a biological evaluation similar to a Biological Assessment be prepared to determine whether the project may affect listed or proposed species and/or designated or proposed critical habitat. Recommended contents of a Biological Assessment are described at 50 CFR 402.12.

If a Federal agency determines, based on the Biological Assessment or biological evaluation, that listed species and/or designated critical habitat may be affected by the proposed project, the agency is required to consult with the Service pursuant to 50 CFR 402. In addition, the Service recommends that candidate species, proposed species and proposed critical habitat be addressed within the consultation. More information on the regulations and procedures for section 7 consultation, including the role of permit or license applicants, can be found in the "Endangered Species Consultation Handbook" at:

<https://www.fws.gov/sites/default/files/documents/endangered-species-consultation-handbook.pdf>

**Florida bonneted bat:** If the Florida bonneted bat or Florida bonneted bat Critical Habitat is on your Official Species List, please make sure you are using the [2024 Florida Bonneted Bat Guidelines and Key](#) and submitting acoustic survey data to [NABat](#) if acoustic surveys are conducted.

**Migratory Birds:** In addition to responsibilities to protect threatened and endangered species under the Endangered Species Act (ESA), there are additional responsibilities under the Migratory Bird Treaty Act (MBTA) and the Bald and Golden Eagle Protection Act (BGEPA) to protect native birds from project-related impacts. Any activity resulting in take of migratory birds, including eagles, is prohibited unless otherwise permitted by the U.S. Fish and Wildlife Service (50 C.F.R. Sec. 10.12 and 16 U.S.C. Sec. 668(a)). For more information regarding these Acts see <https://www.fws.gov/program/migratory-bird-permits/what-we-do>.

It is the responsibility of the project proponent to comply with these Acts by identifying potential impacts to migratory birds and eagles within applicable NEPA documents (when there is a federal nexus) or a Bird/Eagle Conservation Plan (when there is no federal nexus). Proponents should implement conservation measures to avoid or minimize the production of project-related stressors or minimize the exposure of birds and their resources to the project-related stressors. For more information on avian stressors and recommended conservation measures see <https://www.fws.gov/library/collections/threats-birds>.

In addition to MBTA and BGEPA, Executive Order 13186: *Responsibilities of Federal Agencies to Protect Migratory Birds*, obligates all Federal agencies that engage in or authorize activities that might affect migratory birds, to minimize those effects and encourage conservation measures that will improve bird populations. Executive Order 13186 provides for the protection of both migratory birds and migratory bird habitat. For information regarding the implementation of

Executive Order 13186, please visit <https://www.fws.gov/partner/council-conservation-migratory-birds>.

We appreciate your concern for threatened and endangered species. The Service encourages Federal agencies to include conservation of threatened and endangered species into their project planning to further the purposes of the Act. Please include the Consultation Code in the header of this letter with any request for consultation or correspondence about your project that you submit to our office.

Attachment(s):

- Official Species List
- USFWS National Wildlife Refuges and Fish Hatcheries
- Bald & Golden Eagles
- Migratory Birds
- Marine Mammals
- Coastal Barriers
- Wetlands

## OFFICIAL SPECIES LIST

This list is provided pursuant to Section 7 of the Endangered Species Act, and fulfills the requirement for Federal agencies to "request of the Secretary of the Interior information whether any species which is listed or proposed to be listed may be present in the area of a proposed action".

This species list is provided by:

**Florida Ecological Services Field Office**

777 37th St

Suite D-101

Vero Beach, FL 32960-3559

(352) 448-9151

## PROJECT SUMMARY

Project Code: 2026-0007754

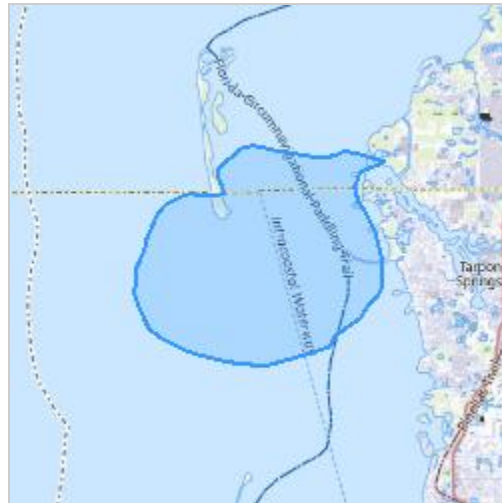
Project Name: Anclote River

Project Type: Navigation Channel Improvement

Project Description: The U.S. Army Corps of Engineers, Jacksonville District (Corps) is considering changes to the Anclote River, Florida project overlapping in both Pinellas and Pasco Counties. The purpose of this Environmental Assessment (EA) is to analyze potential effects of channel re-alignment, Operations and Maintenance (O&M) dredging within Cuts-1 and 2, O&M of the Gulf Intracoastal Waterway (GIWW) and material placement options. The non-federal sponsor is the City of Tarpon Springs.

Project Location:

The approximate location of the project can be viewed in Google Maps: <https://www.google.com/maps/@28.1546492,-82.83208587447447,14z>



Counties: Pasco and Pinellas counties, Florida

## ENDANGERED SPECIES ACT SPECIES

There is a total of 14 threatened, endangered, or candidate species on this species list.

Species on this list should be considered in an effects analysis for your project and could include species that exist in another geographic area. For example, certain fish may appear on the species list because a project could affect downstream species.

IPaC does not display listed species or critical habitats under the sole jurisdiction of NOAA Fisheries<sup>1</sup>, as USFWS does not have the authority to speak on behalf of NOAA and the Department of Commerce.

See the "Critical habitats" section below for those critical habitats that lie wholly or partially within your project area under this office's jurisdiction. Please contact the designated FWS office if you have questions.

- 
1. [NOAA Fisheries](#), also known as the National Marine Fisheries Service (NMFS), is an office of the National Oceanic and Atmospheric Administration within the Department of Commerce.

## MAMMALS

NAME	STATUS
West Indian Manatee <i>Trichechus manatus</i> There is <b>final</b> critical habitat for this species. Your location overlaps the critical habitat. <b><i>This species is also protected by the Marine Mammal Protection Act, and may have additional consultation requirements.</i></b> Species profile: <a href="https://ecos.fws.gov/ecp/species/4469">https://ecos.fws.gov/ecp/species/4469</a> General project design guidelines: <a href="https://ipac.ecosphere.fws.gov/project/RPOT7E7HCZAZDCJ3T4TDNILUNE/documents/generated/7281.pdf">https://ipac.ecosphere.fws.gov/project/RPOT7E7HCZAZDCJ3T4TDNILUNE/documents/generated/7281.pdf</a>	Threatened

## BIRDS

NAME	STATUS
Eastern Black Rail <i>Laterallus jamaicensis ssp. jamaicensis</i> No critical habitat has been designated for this species. Species profile: <a href="https://ecos.fws.gov/ecp/species/10477">https://ecos.fws.gov/ecp/species/10477</a>	Threatened
Everglade Snail Kite <i>Rostrhamus sociabilis plumbeus</i> There is <b>final</b> critical habitat for this species. Your location does not overlap the critical habitat. Species profile: <a href="https://ecos.fws.gov/ecp/species/7713">https://ecos.fws.gov/ecp/species/7713</a>	Endangered
Piping Plover <i>Charadrius melodus</i> Population: [Atlantic Coast and Northern Great Plains populations] - Wherever found, except those areas where listed as endangered. There is <b>final</b> critical habitat for this species. Your location overlaps the critical habitat. Species profile: <a href="https://ecos.fws.gov/ecp/species/6039">https://ecos.fws.gov/ecp/species/6039</a>	Threatened
Rufa Red Knot <i>Calidris canutus rufa</i> There is <b>proposed</b> critical habitat for this species. Your location overlaps the critical habitat. Species profile: <a href="https://ecos.fws.gov/ecp/species/1864">https://ecos.fws.gov/ecp/species/1864</a>	Threatened
Whooping Crane <i>Grus americana</i> Population: U.S.A. (AL, AR, CO, FL, GA, ID, IL, IN, IA, KY, LA, MI, MN, MS, MO, NC, NM, OH, SC, TN, UT, VA, WI, WV, western half of WY) No critical habitat has been designated for this species. Species profile: <a href="https://ecos.fws.gov/ecp/species/758">https://ecos.fws.gov/ecp/species/758</a>	Experimental Population, Non-Essential
Wood Stork <i>Mycteria americana</i> Population: AL, FL, GA, MS, NC, SC No critical habitat has been designated for this species. Species profile: <a href="https://ecos.fws.gov/ecp/species/8477">https://ecos.fws.gov/ecp/species/8477</a> General project design guidelines: <a href="https://ipac.ecosphere.fws.gov/project/RPOT7E7HCZAZDCJ3T4TDNILUNE/documents/generated/6954.pdf">https://ipac.ecosphere.fws.gov/project/RPOT7E7HCZAZDCJ3T4TDNILUNE/documents/generated/6954.pdf</a>	Threatened

## REPTILES

NAME	STATUS
Eastern Indigo Snake <i>Drymarchon couperi</i>	Threatened

NAME	STATUS
No critical habitat has been designated for this species. Species profile: <a href="https://ecos.fws.gov/ecp/species/646">https://ecos.fws.gov/ecp/species/646</a>	
Hawksbill Sea Turtle <i>Eretmochelys imbricata</i> There is <b>final</b> critical habitat for this species. Your location does not overlap the critical habitat. Species profile: <a href="https://ecos.fws.gov/ecp/species/3656">https://ecos.fws.gov/ecp/species/3656</a>	Endangered
Kemp's Ridley Sea Turtle <i>Lepidochelys kempii</i> There is <b>proposed</b> critical habitat for this species. Species profile: <a href="https://ecos.fws.gov/ecp/species/5523">https://ecos.fws.gov/ecp/species/5523</a>	Endangered
Leatherback Sea Turtle <i>Dermochelys coriacea</i> There is <b>final</b> critical habitat for this species. Your location does not overlap the critical habitat. Species profile: <a href="https://ecos.fws.gov/ecp/species/1493">https://ecos.fws.gov/ecp/species/1493</a>	Endangered
Loggerhead Sea Turtle <i>Caretta caretta</i> Population: Northwest Atlantic Ocean DPS There is <b>final</b> critical habitat for this species. Your location does not overlap the critical habitat. Species profile: <a href="https://ecos.fws.gov/ecp/species/1110">https://ecos.fws.gov/ecp/species/1110</a>	Threatened
Southern Hognose Snake <i>Heterodon simus</i> No critical habitat has been designated for this species. Species profile: <a href="https://ecos.fws.gov/ecp/species/3248">https://ecos.fws.gov/ecp/species/3248</a>	Proposed Threatened

## INSECTS

NAME	STATUS
Monarch Butterfly <i>Danaus plexippus</i> There is <b>proposed</b> critical habitat for this species. Your location does not overlap the critical habitat. Species profile: <a href="https://ecos.fws.gov/ecp/species/9743">https://ecos.fws.gov/ecp/species/9743</a>	Proposed Threatened

## CRITICAL HABITATS

There are 2 critical habitats wholly or partially within your project area under this office's jurisdiction.

NAME	STATUS
Piping Plover <i>Charadrius melodus</i> <a href="https://ecos.fws.gov/ecp/species/6039#crithab">https://ecos.fws.gov/ecp/species/6039#crithab</a>	Final
Rufa Red Knot <i>Calidris canutus rufa</i> <a href="https://ecos.fws.gov/ecp/species/1864#crithab">https://ecos.fws.gov/ecp/species/1864#crithab</a>	Proposed

You should contact the local field office to determine whether critical habitat for the following species should be considered:

NAME	STATUS
West Indian Manatee <i>Trichechus manatus</i>	Final

NAME

STATUS

<https://ecos.fws.gov/ecp/species/4469#crithab>

## USFWS NATIONAL WILDLIFE REFUGE LANDS AND FISH HATCHERIES

Any activity proposed on lands managed by the [National Wildlife Refuge](#) system must undergo a 'Compatibility Determination' conducted by the Refuge. Please contact the individual Refuges to discuss any questions or concerns.

THERE ARE NO REFUGE LANDS OR FISH HATCHERIES WITHIN YOUR PROJECT AREA.

## BALD & GOLDEN EAGLES

Bald and Golden Eagles are protected under the Bald and Golden Eagle Protection Act <sup>2</sup> and the Migratory Bird Treaty Act (MBTA) <sup>1</sup>. Any person or organization who plans or conducts activities that may result in impacts to Bald or Golden Eagles, or their habitats, should follow appropriate regulations and consider implementing appropriate avoidance and minimization measures, as described in the various links on this page.

- 
1. The [Bald and Golden Eagle Protection Act](#) of 1940.
  2. The [Migratory Birds Treaty Act](#) of 1918.
  3. 50 C.F.R. Sec. 10.12 and 16 U.S.C. Sec. 668(a)

There are Bald Eagles and/or Golden Eagles in your [project](#) area.

### Measures for Proactively Minimizing Eagle Impacts

For information on how to best avoid and minimize disturbance to nesting bald eagles, please review the [National Bald Eagle Management Guidelines](#). You may employ the timing and activity-specific distance recommendations in this document when designing your project/activity to avoid and minimize eagle impacts. For bald eagle information specific to Alaska, please refer to [Bald Eagle Nesting and Sensitivity to Human Activity](#).

The FWS does not currently have guidelines for avoiding and minimizing disturbance to nesting Golden Eagles. For site-specific recommendations regarding nesting Golden Eagles, please consult with the appropriate Regional [Migratory Bird Office](#) or [Ecological Services Field Office](#).

If disturbance or take of eagles cannot be avoided, an [incidental take permit](#) may be available to authorize any take that results from, but is not the purpose of, an otherwise lawful activity. For assistance making this determination for Bald Eagles, visit the [Do I Need A Permit Tool](#). For assistance making this determination for golden eagles, please consult with the appropriate Regional [Migratory Bird Office](#) or [Ecological Services Field Office](#).

### Ensure Your Eagle List is Accurate and Complete

If your project area is in a poorly surveyed area in IPaC, your list may not be complete and you may need to rely on other resources to determine what species may be present (e.g. your local FWS field office, state surveys, your own surveys). Please review the [Supplemental Information on Migratory Birds and Eagles](#), to help you properly interpret the report for your specified location, including determining if there is sufficient data to ensure your list is accurate.

For guidance on when to schedule activities or implement avoidance and minimization measures to reduce impacts to bald or golden eagles on your list, see the "Probability of Presence Summary" below to see when these bald or golden eagles are most likely to be present and breeding in your project area.

NAME	BREEDING SEASON
Bald Eagle <i>Haliaeetus leucocephalus</i> This is not a Bird of Conservation Concern (BCC) in this area, but warrants attention because of the Eagle Act or for potential susceptibilities in offshore areas from certain types of development or activities. <a href="https://ecos.fws.gov/ecp/species/1626">https://ecos.fws.gov/ecp/species/1626</a>	Breeds Sep 1 to Jul 31

## PROBABILITY OF PRESENCE SUMMARY

The graphs below provide our best understanding of when birds of concern are most likely to be present in your project area. This information can be used to tailor and schedule your project activities to avoid or minimize impacts to birds. Please make sure you read "[Supplemental Information on Migratory Birds and Eagles](#)", specifically the FAQ section titled "Proper Interpretation and Use of Your Migratory Bird Report" before using or attempting to interpret this report.

### Probability of Presence (■)

Green bars; the bird's relative probability of presence in the 10km grid cell(s) your project overlaps during that week of the year.

### Breeding Season (■)

Yellow bars; liberal estimate of the timeframe inside which the bird breeds across its entire range.

### Survey Effort (|)

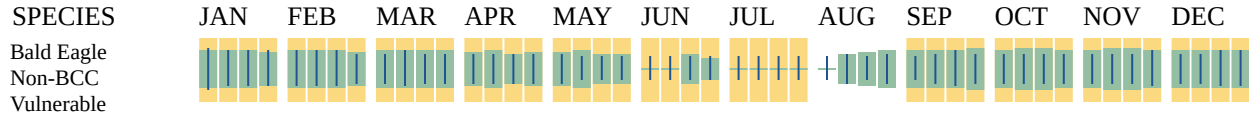
Vertical black lines; the number of surveys performed for that species in the 10km grid cell(s) your project area overlaps.

### No Data (-)

A week is marked as having no data if there were no survey events for that week.

---

■ probability of presence   ■ breeding season   | survey effort   - no data



Additional information can be found using the following links:

- Eagle Management <https://www.fws.gov/program/eagle-management>
- Measures for avoiding and minimizing impacts to birds <https://www.fws.gov/library/collections/avoiding-and-minimizing-incident-take-migratory-birds>
- Nationwide avoidance and minimization measures for birds <https://www.fws.gov/sites/default/files/documents/nationwide-standard-conservation-measures.pdf>
- Supplemental Information for Migratory Birds and Eagles in IPaC <https://www.fws.gov/media/supplemental-information-migratory-birds-and-bald-and-golden-eagles-may-occur-project-action>

## MIGRATORY BIRDS

The Migratory Bird Treaty Act (MBTA) <sup>1</sup> prohibits the take (including killing, capturing, selling, trading, and transport) of protected migratory bird species without prior authorization by the Department of Interior U.S. Fish and Wildlife Service (Service).

1. The [Migratory Birds Treaty Act](#) of 1918.
2. The [Bald and Golden Eagle Protection Act](#) of 1940.
3. 50 C.F.R. Sec. 10.12 and 16 U.S.C. Sec. 668(a)

For guidance on when to schedule activities or implement avoidance and minimization measures to reduce impacts to migratory birds on your list, see the "Probability of Presence Summary" below to see when these birds are most likely to be present and breeding in your project area.

NAME	BREEDING SEASON
American Kestrel <i>Falco sparverius paulus</i> This is a Bird of Conservation Concern (BCC) only in particular Bird Conservation Regions (BCRs) in the continental USA <a href="https://ecos.fws.gov/ecp/species/9587">https://ecos.fws.gov/ecp/species/9587</a>	Breeds Apr 1 to Aug 31
American Oystercatcher <i>Haematopus palliatus</i> This is a Bird of Conservation Concern (BCC) throughout its range in the continental USA and Alaska. <a href="https://ecos.fws.gov/ecp/species/8935">https://ecos.fws.gov/ecp/species/8935</a>	Breeds Apr 15 to Aug 31

NAME	BREEDING SEASON
<p><b>Bald Eagle</b> <i>Haliaeetus leucocephalus</i></p> <p>This is not a Bird of Conservation Concern (BCC) in this area, but warrants attention because of the Eagle Act or for potential susceptibilities in offshore areas from certain types of development or activities.</p> <p><a href="https://ecos.fws.gov/ecp/species/1626">https://ecos.fws.gov/ecp/species/1626</a></p>	Breeds Sep 1 to Jul 31
<p><b>Black Scoter</b> <i>Melanitta nigra</i></p> <p>This is not a Bird of Conservation Concern (BCC) in this area, but warrants attention because of the Eagle Act or for potential susceptibilities in offshore areas from certain types of development or activities.</p> <p><a href="https://ecos.fws.gov/ecp/species/10413">https://ecos.fws.gov/ecp/species/10413</a></p>	Breeds elsewhere
<p><b>Black Skimmer</b> <i>Rynchops niger</i></p> <p>This is a Bird of Conservation Concern (BCC) throughout its range in the continental USA and Alaska.</p> <p><a href="https://ecos.fws.gov/ecp/species/5234">https://ecos.fws.gov/ecp/species/5234</a></p>	Breeds May 20 to Sep 15
<p><b>Brown Pelican</b> <i>Pelecanus occidentalis</i></p> <p>This is not a Bird of Conservation Concern (BCC) in this area, but warrants attention because of the Eagle Act or for potential susceptibilities in offshore areas from certain types of development or activities.</p> <p><a href="https://ecos.fws.gov/ecp/species/6034">https://ecos.fws.gov/ecp/species/6034</a></p>	Breeds Jan 15 to Sep 30
<p><b>Chimney Swift</b> <i>Chaetura pelagica</i></p> <p>This is a Bird of Conservation Concern (BCC) throughout its range in the continental USA and Alaska.</p> <p><a href="https://ecos.fws.gov/ecp/species/9406">https://ecos.fws.gov/ecp/species/9406</a></p>	Breeds Mar 15 to Aug 25
<p><b>Common Loon</b> <i>gavia immer</i></p> <p>This is not a Bird of Conservation Concern (BCC) in this area, but warrants attention because of the Eagle Act or for potential susceptibilities in offshore areas from certain types of development or activities.</p> <p><a href="https://ecos.fws.gov/ecp/species/4464">https://ecos.fws.gov/ecp/species/4464</a></p>	Breeds Apr 15 to Oct 31
<p><b>Double-crested Cormorant</b> <i>phalacrocorax auritus</i></p> <p>This is not a Bird of Conservation Concern (BCC) in this area, but warrants attention because of the Eagle Act or for potential susceptibilities in offshore areas from certain types of development or activities.</p> <p><a href="https://ecos.fws.gov/ecp/species/3478">https://ecos.fws.gov/ecp/species/3478</a></p>	Breeds Apr 20 to Aug 31
<p><b>Great Blue Heron</b> <i>Ardea herodias occidentalis</i></p> <p>This is a Bird of Conservation Concern (BCC) only in particular Bird Conservation Regions (BCRs) in the continental USA</p> <p><a href="https://ecos.fws.gov/ecp/species/10590">https://ecos.fws.gov/ecp/species/10590</a></p>	Breeds Jan 1 to Dec 31
<p><b>Gull-billed Tern</b> <i>Gelochelidon nilotica</i></p> <p>This is a Bird of Conservation Concern (BCC) throughout its range in the continental USA and Alaska.</p> <p><a href="https://ecos.fws.gov/ecp/species/9501">https://ecos.fws.gov/ecp/species/9501</a></p>	Breeds May 1 to Jul 31

NAME	BREEDING SEASON
<b>King Rail <i>Rallus elegans</i></b> This is a Bird of Conservation Concern (BCC) throughout its range in the continental USA and Alaska. <a href="https://ecos.fws.gov/ecp/species/8936">https://ecos.fws.gov/ecp/species/8936</a>	Breeds May 1 to Sep 5
<b>Least Tern <i>Sternula antillarum antillarum</i></b> This is a Bird of Conservation Concern (BCC) throughout its range in the continental USA and Alaska. <a href="https://ecos.fws.gov/ecp/species/11919">https://ecos.fws.gov/ecp/species/11919</a>	Breeds Apr 25 to Sep 5
<b>Lesser Yellowlegs <i>Tringa flavipes</i></b> This is a Bird of Conservation Concern (BCC) throughout its range in the continental USA and Alaska. <a href="https://ecos.fws.gov/ecp/species/9679">https://ecos.fws.gov/ecp/species/9679</a>	Breeds elsewhere
<b>Magnificent Frigatebird <i>Fregata magnificens</i></b> This is a Bird of Conservation Concern (BCC) only in particular Bird Conservation Regions (BCRs) in the continental USA <a href="https://ecos.fws.gov/ecp/species/9588">https://ecos.fws.gov/ecp/species/9588</a>	Breeds Oct 1 to Apr 30
<b>Mangrove Cuckoo <i>Coccyzus minor</i></b> This is a Bird of Conservation Concern (BCC) only in particular Bird Conservation Regions (BCRs) in the continental USA <a href="https://ecos.fws.gov/ecp/species/9581">https://ecos.fws.gov/ecp/species/9581</a>	Breeds Apr 20 to Aug 20
<b>Painted Bunting <i>Passerina ciris</i></b> This is a Bird of Conservation Concern (BCC) only in particular Bird Conservation Regions (BCRs) in the continental USA <a href="https://ecos.fws.gov/ecp/species/9511">https://ecos.fws.gov/ecp/species/9511</a>	Breeds Apr 25 to Aug 15
<b>Pectoral Sandpiper <i>Calidris melanotos</i></b> This is a Bird of Conservation Concern (BCC) throughout its range in the continental USA and Alaska. <a href="https://ecos.fws.gov/ecp/species/9561">https://ecos.fws.gov/ecp/species/9561</a>	Breeds elsewhere
<b>Prairie Warbler <i>Setophaga discolor</i></b> This is a Bird of Conservation Concern (BCC) throughout its range in the continental USA and Alaska. <a href="https://ecos.fws.gov/ecp/species/9513">https://ecos.fws.gov/ecp/species/9513</a>	Breeds May 1 to Jul 31
<b>Red-breasted Merganser <i>Mergus serrator</i></b> This is not a Bird of Conservation Concern (BCC) in this area, but warrants attention because of the Eagle Act or for potential susceptibilities in offshore areas from certain types of development or activities. <a href="https://ecos.fws.gov/ecp/species/10693">https://ecos.fws.gov/ecp/species/10693</a>	Breeds elsewhere
<b>Red-headed Woodpecker <i>Melanerpes erythrocephalus</i></b> This is a Bird of Conservation Concern (BCC) throughout its range in the continental USA and Alaska. <a href="https://ecos.fws.gov/ecp/species/9398">https://ecos.fws.gov/ecp/species/9398</a>	Breeds May 10 to Sep 10

NAME	BREEDING SEASON
<p>Reddish Egret <i>Egretta rufescens</i>            This is a Bird of Conservation Concern (BCC) throughout its range in the continental USA and Alaska.  <a href="https://ecos.fws.gov/ecp/species/7617">https://ecos.fws.gov/ecp/species/7617</a></p>	Breeds Mar 1 to Sep 15
<p>Ring-billed Gull <i>Larus delawarensis</i>            This is not a Bird of Conservation Concern (BCC) in this area, but warrants attention because of the Eagle Act or for potential susceptibilities in offshore areas from certain types of development or activities.  <a href="https://ecos.fws.gov/ecp/species/10468">https://ecos.fws.gov/ecp/species/10468</a></p>	Breeds elsewhere
<p>Royal Tern <i>Thalasseus maximus</i>            This is not a Bird of Conservation Concern (BCC) in this area, but warrants attention because of the Eagle Act or for potential susceptibilities in offshore areas from certain types of development or activities.  <a href="https://ecos.fws.gov/ecp/species/10471">https://ecos.fws.gov/ecp/species/10471</a></p>	Breeds Apr 15 to Aug 31
<p>Ruddy Turnstone <i>Arenaria interpres morinella</i>            This is a Bird of Conservation Concern (BCC) only in particular Bird Conservation Regions (BCRs) in the continental USA  <a href="https://ecos.fws.gov/ecp/species/10633">https://ecos.fws.gov/ecp/species/10633</a></p>	Breeds elsewhere
<p>Semipalmated Sandpiper <i>Calidris pusilla</i>            This is a Bird of Conservation Concern (BCC) only in particular Bird Conservation Regions (BCRs) in the continental USA  <a href="https://ecos.fws.gov/ecp/species/9603">https://ecos.fws.gov/ecp/species/9603</a></p>	Breeds elsewhere
<p>Short-billed Dowitcher <i>Limnodromus griseus</i>            This is a Bird of Conservation Concern (BCC) throughout its range in the continental USA and Alaska.  <a href="https://ecos.fws.gov/ecp/species/9480">https://ecos.fws.gov/ecp/species/9480</a></p>	Breeds elsewhere
<p>Sooty Tern <i>Onychoprion fuscatus</i>            This is not a Bird of Conservation Concern (BCC) in this area, but warrants attention because of the Eagle Act or for potential susceptibilities in offshore areas from certain types of development or activities.  <a href="https://ecos.fws.gov/ecp/species/10695">https://ecos.fws.gov/ecp/species/10695</a></p>	Breeds Mar 10 to Jul 31
<p>Swallow-tailed Kite <i>Elanoides forficatus</i>            This is a Bird of Conservation Concern (BCC) throughout its range in the continental USA and Alaska.  <a href="https://ecos.fws.gov/ecp/species/8938">https://ecos.fws.gov/ecp/species/8938</a></p>	Breeds Mar 10 to Jun 30
<p>Whimbrel <i>Numenius phaeopus hudsonicus</i>            This is a Bird of Conservation Concern (BCC) only in particular Bird Conservation Regions (BCRs) in the continental USA  <a href="https://ecos.fws.gov/ecp/species/11991">https://ecos.fws.gov/ecp/species/11991</a></p>	Breeds elsewhere

NAME	BREEDING SEASON
<b>White-winged Scoter <i>Melanitta fusca</i></b> This is not a Bird of Conservation Concern (BCC) in this area, but warrants attention because of the Eagle Act or for potential susceptibilities in offshore areas from certain types of development or activities. <a href="https://ecos.fws.gov/ecp/species/10462">https://ecos.fws.gov/ecp/species/10462</a>	Breeds elsewhere
<b>Willet <i>Tringa semipalmata</i></b> This is a Bird of Conservation Concern (BCC) throughout its range in the continental USA and Alaska. <a href="https://ecos.fws.gov/ecp/species/10669">https://ecos.fws.gov/ecp/species/10669</a>	Breeds Apr 20 to Aug 5
<b>Wilson's Plover <i>Charadrius wilsonia</i></b> This is a Bird of Conservation Concern (BCC) throughout its range in the continental USA and Alaska. <a href="https://ecos.fws.gov/ecp/species/9722">https://ecos.fws.gov/ecp/species/9722</a>	Breeds Apr 1 to Aug 20
<b>Worthington's Marsh Wren <i>Cistothorus palustris griseus</i></b> This is a Bird of Conservation Concern (BCC) only in particular Bird Conservation Regions (BCRs) in the continental USA <a href="https://ecos.fws.gov/ecp/species/9560">https://ecos.fws.gov/ecp/species/9560</a>	Breeds Apr 10 to Aug 31

## PROBABILITY OF PRESENCE SUMMARY

The graphs below provide our best understanding of when birds of concern are most likely to be present in your project area. This information can be used to tailor and schedule your project activities to avoid or minimize impacts to birds. Please make sure you read "[Supplemental Information on Migratory Birds and Eagles](#)", specifically the FAQ section titled "Proper Interpretation and Use of Your Migratory Bird Report" before using or attempting to interpret this report.

### Probability of Presence (■)

Green bars; the bird's relative probability of presence in the 10km grid cell(s) your project overlaps during that week of the year.

### Breeding Season (■)

Yellow bars; liberal estimate of the timeframe inside which the bird breeds across its entire range.

### Survey Effort (|)

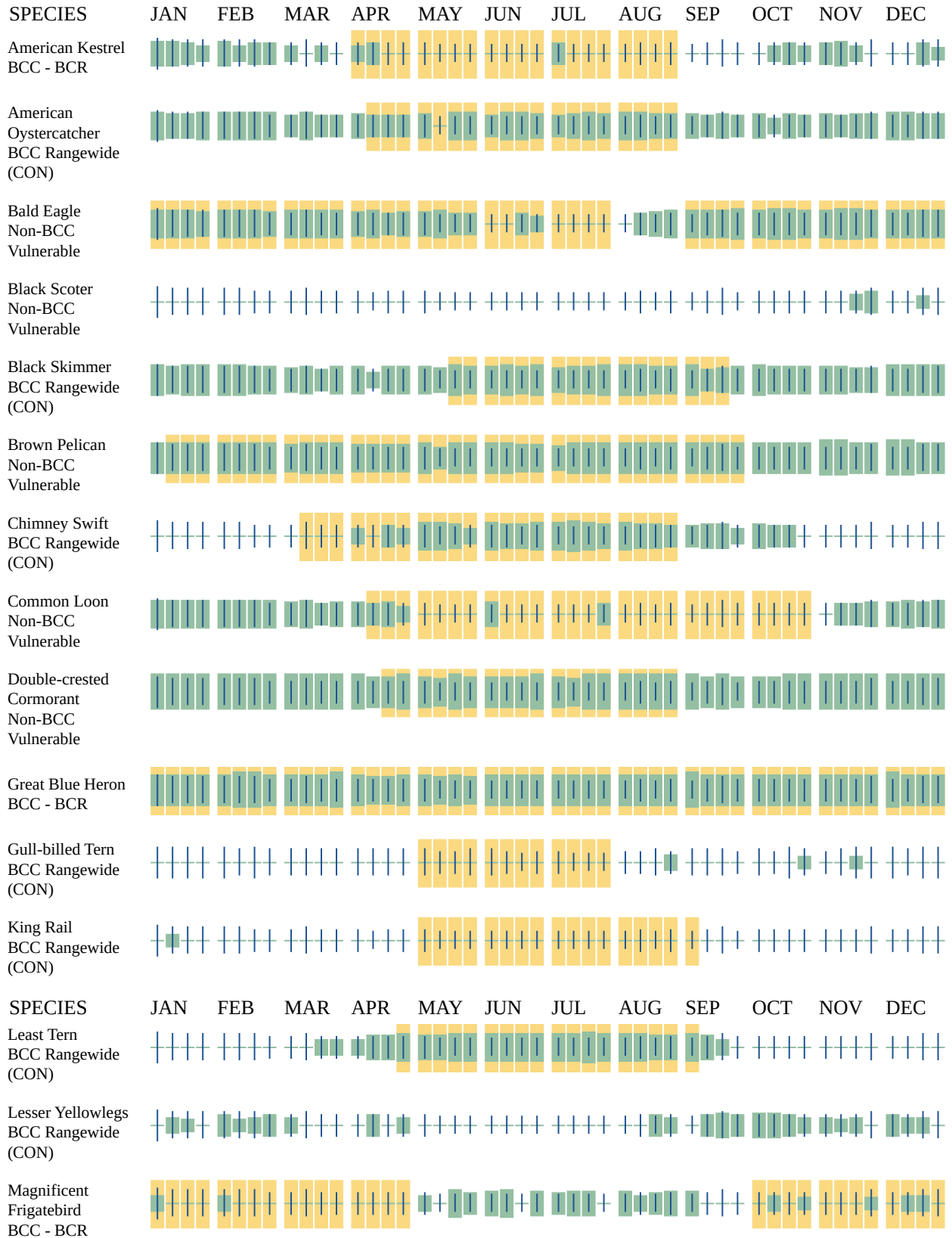
Vertical black lines; the number of surveys performed for that species in the 10km grid cell(s) your project area overlaps.

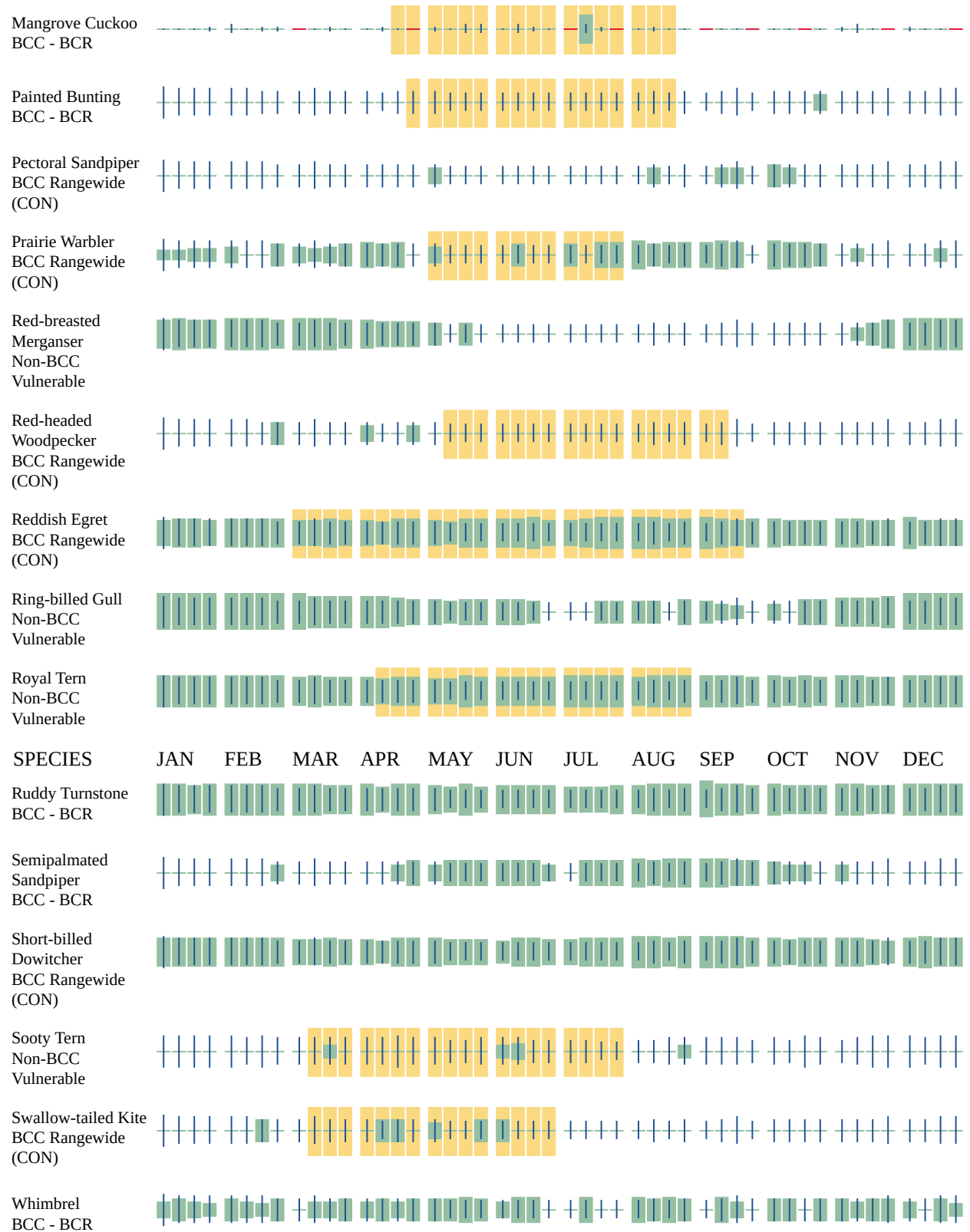
### No Data (—)

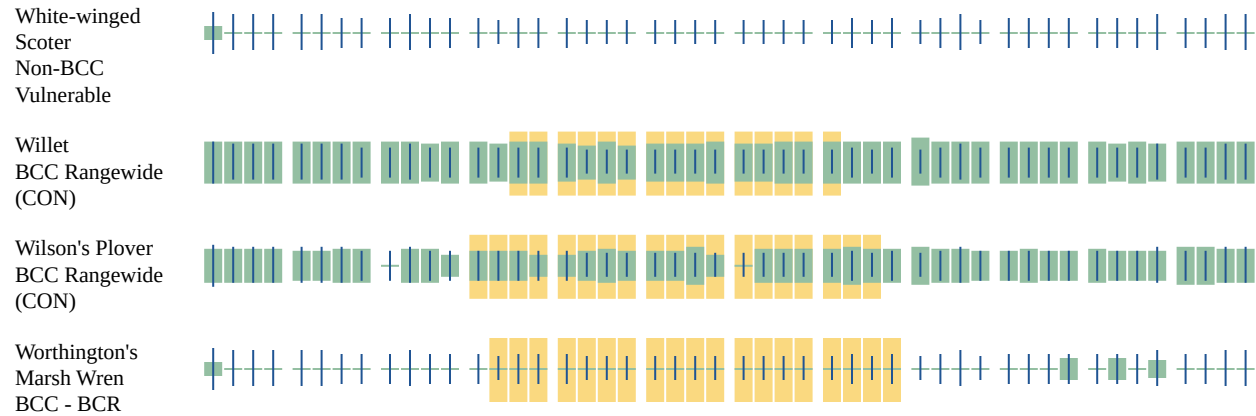
A week is marked as having no data if there were no survey events for that week.

---

■ probability of presence   ■ breeding season   | survey effort   — no data







Additional information can be found using the following links:

- Eagle Management <https://www.fws.gov/program/eagle-management>
- Measures for avoiding and minimizing impacts to birds <https://www.fws.gov/library/collections/avoiding-and-minimizing-incident-take-migratory-birds>
- Nationwide avoidance and minimization measures for birds
- Supplemental Information for Migratory Birds and Eagles in IPaC <https://www.fws.gov/media/supplemental-information-migratory-birds-and-bald-and-golden-eagles-may-occur-project-action>

## COASTAL BARRIERS

Projects within the [John H. Chafee Coastal Barrier Resources System \(CBRS\)](#) may be subject to the restrictions on Federal expenditures and financial assistance and the consultation requirements of the Coastal Barrier Resources Act (CBRA) (16 U.S.C. 3501 et seq.). For more information, please contact the local [Ecological Services Field Office](#) or visit the [CBRA Consultations website](#). The CBRA website provides tools such as a flow chart to help determine whether consultation is required and a template to facilitate the consultation process.

## OTHERWISE PROTECTED AREA (OPA)

*OPAs are denoted with a "P" at the end of the unit number. The only prohibition within OPAs is on Federal flood insurance. **CBRA consultation is not required for projects within OPAs.** However, agencies providing disaster assistance that is contingent upon a requirement to purchase flood insurance after the fact are advised to disclose the OPA designation and information on the restrictions on Federal flood insurance to the recipient prior to the commitments of funds.*

UNIT	NAME	TYPE	SYSTEM UNIT ESTABLISHMENT DATE	FLOOD INSURANCE PROHIBITION DATE
FL-87P	Anclote Key	OPA	N/A	11/16/1991

## MARINE MAMMALS

Marine mammals are protected under the [Marine Mammal Protection Act](#). Some are also protected under the Endangered Species Act<sup>1</sup> and the Convention on International Trade in Endangered Species of Wild Fauna and Flora<sup>2</sup>.

The responsibilities for the protection, conservation, and management of marine mammals are shared by the U.S. Fish and Wildlife Service [responsible for otters, walruses, polar bears, manatees, and dugongs] and NOAA Fisheries<sup>3</sup> [responsible for seals, sea lions, whales, dolphins, and porpoises]. Marine mammals under the responsibility of NOAA Fisheries are **not** shown on this list; for additional information on those species please visit the [Marine Mammals](#) page of the NOAA Fisheries website.

The Marine Mammal Protection Act prohibits the take of marine mammals and further coordination may be necessary for project evaluation. Please contact the U.S. Fish and Wildlife Service Field Office shown.

- 
1. The [Endangered Species Act](#) (ESA) of 1973.
  2. The [Convention on International Trade in Endangered Species of Wild Fauna and Flora](#) (CITES) is a treaty to ensure that international trade in plants and animals does not threaten their survival in the wild.
  3. [NOAA Fisheries](#), also known as the National Marine Fisheries Service (NMFS), is an office of the National Oceanic and Atmospheric Administration within the Department of Commerce.

NAME

---

West Indian Manatee *Trichechus manatus*

Species profile: <https://ecos.fws.gov/ecp/species/4469>

## WETLANDS

Impacts to [NWI wetlands](#) and other aquatic habitats may be subject to regulation under Section 404 of the Clean Water Act, or other State/Federal statutes.

For more information please contact the Regulatory Program of the local [U.S. Army Corps of Engineers District](#).

Please note that the NWI data being shown may be out of date. We are currently working to update our NWI data set. We recommend you verify these results with a site visit to determine the actual extent of wetlands on site.

ESTUARINE AND MARINE WETLAND

- E2USN
- E2ABM

- E2USP
- E2SS3N
- E2EM1N

ESTUARINE AND MARINE DEEPWATER

- E1UBLx
- E1UBL
- M1UBL
- E1ABL

## **IPAC USER CONTACT INFORMATION**

Agency: Department of Defense  
Name: Rachel Scharer Case  
Address: 701 San Marco Blvd  
City: Jacksonville  
State: FL  
Zip: 32207  
Email: rcase926@gmail.com  
Phone: 3867939492



## United States Department of the Interior

### U. S. FISH AND WILDLIFE SERVICE

7915 BAYMEADOWS WAY, SUITE 200  
JACKSONVILLE, FLORIDA 32256-7517

IN REPLY REFER TO:

**FWS Log No. 04EF1000-2019-I-0700**

August 6, 2019

Ms. Angela E. Dunn, Chief  
Environmental Branch/Planning Division  
U.S. Army Corps of Engineers  
Jacksonville District  
701 San Marco Boulevard  
Jacksonville, Florida 32207-8915  
(Attn: Mr. Paul Stodola)

Re: Maintenance dredging of the Anclote River

Dear Ms. Dunn:

The U.S. Fish and Wildlife Service (Service) has reviewed your correspondence of May 10, 2019, and additional information provided through June 11, 2019. We submit the following comments in accordance with section 7 of the Endangered Species Act of 1973 (Act), as amended (16 U.S.C. 1531 *et seq.*).

The Corps is proposing to perform maintenance dredging of the Anclote River within the confines of the Congressionally-authorized project footprint in Pinellas and Pasco counties. The volume of material to be dredged is currently estimated at approximately 50,000 to 70,000 cubic yards. Future periodic maintenance dredging may occur anywhere within the federally-authorized channel. Dredged material will be dewatered at a nearby upland staging area and then used for upland construction fill, placed in an approved Dredged Material Management Area, or placed in a licensed landfill. Dredging may be performed using a variety of hydraulic and mechanical dredges and bed-leveling devices also may be employed to level or remove high spots.

The Corps determined the project is within the range of the federally-listed piping plover (*Charadrius melodus*), rufa red knot (*Calidris canutus rufa*), Eastern indigo snake (*Drymarchon corais couperi*), and the West Indian (Florida) manatee (*Trichechus manatus latirostris*). The Corps determined the project would have no effect on the piping plover and red knot.

Indigo snakes could inhabit the upland sites to be used to stage and dewater dredged material and activities on these sites have the potential to affect this species. Pre-construction surveys for

gopher tortoises will be conducted on these sites (and the tortoises relocated per Florida Fish and Wildlife Conservation Commission protocols). Because the Corps will comply with the Standard Protection Measures for Eastern Indigo Snakes if indigo snakes are seen during these surveys or during any other activities, the Corps determined this project is unlikely to adversely affect indigo snakes. The Service concurs with this determination.

Manatees are known to use the project area and surrounding waters year-round, with cold season use focused around the warm water sites located in the vicinity of the discharge canal associated with the Duke Energy Anclote Power Plant (near the mouth of the river) and in the vicinity of Spring Bayou in Tarpon Springs. Manatees are frequently found in close proximity to seagrasses and other submerged aquatic vegetation (SAV). Using available data on SAV presence, including field surveys conducted in October 2018, the Corps delineated 205.8 acres of SAV within the project area but none within the immediate area to be dredged. Based on these findings, compliance with the Standard Manatee Conditions for In-Water Work, and stipulation that no dredging will be performed between November 15 and March 31 within the Warm Water Aggregation Area associated with the Duke Energy Anclote Power Plant, the Corps determined the proposed project “may affect, but is not likely to adversely affect” manatees.

After Corps and Service staff discussed the project, the Corps agreed to include an additional conservation measure:

- During clamshell dredging operations, the dredge operator shall gravity-release the clamshell bucket only at the water’s surface, and only after confirmation that there are no manatees within the safety distance identified in the standard construction conditions (or a 75-foot buffer if dredging is authorized at night).

On July 25, 2019, the National Marine Fisheries Service (NMFS) submitted a letter to the Corps addressing the project’s potential effects on SAV, which is a component of designated Essential Fish Habitat for a variety of species. The NMFS expressed concerns about potential secondary impacts to SAV resulting from the dredging. To address these concerns, NMFS recommended several additional actions be incorporated into the project, including conducting pre- and post-construction SAV surveys and implementing in-kind compensatory mitigation for any direct or secondary impacts that occur. The Service agrees with these recommendations.

Based on the project as described and given the proposed conservation measures and other issues discussed above, the Service concludes that the likelihood of adverse effects to manatees is insignificant or discountable. The Service therefore concurs with the Corps’ “may affect, not likely to adversely affect” determination for manatees.

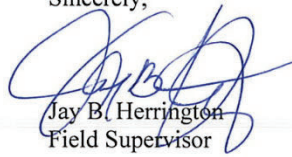
---

Although this does not represent a biological opinion as described in section 7 of the Act, it does fulfill the requirements of the Act and no further action is required. Reinitiation of consultation is required if modifications are made to the project that were not previously considered and may adversely affect listed species, or their habitat; if additional information involving potential effects to manatees or other listed species becomes available; or if take of manatees or other listed species occurs.

If you have any questions regarding this response, please contact Mr. Scott Calleson of my staff at the address on the letterhead, by email at [charles\\_calleson@fws.gov](mailto:charles_calleson@fws.gov), or by calling (904) 731-3326.

---

Sincerely,



Jay B. Herrington  
Field Supervisor

---