

ENVIRONMENTAL ASSESSMENT

Ancote River, Florida Project and Gulf Intracoastal Waterway (GIWW) Cut P-41 Pinellas & Pasco Counties

MAINTENANCE DREDGING AND DREDGED MATERIAL PLACEMENT

NEPA ID: EAXX-202-00-K3P-1765294248

APPENDIX A

Pertinent Correspondence

U.S. ARMY CORPS OF ENGINEERS

JACKSONVILLE DISTRICT



**U.S. Army Corps of Engineers
JACKSONVILLE DISTRICT**



DEPARTMENT OF THE ARMY
U.S. ARMY CORPS OF ENGINEERS, JACKSONVILLE DISTRICT
701 SAN MARCO BOULEVARD
JACKSONVILLE, FLORIDA 32207

dd mmmm yyyy

Pace Wilber
 NOAA's National Marine Fisheries
 Assistant Regional Administrator
 Habitat Conservation Division
 263 13th Ave South
 St. Petersburg, FL 33701

Dear Dr. Wilber,

Pursuant to the National Environmental Policy Act of 1969, as amended (NEPA), and the, U.S. Army Corps of Engineers, Jacksonville District (Corps) Regulation (32 CFR 651), this letter constitutes the Notice of Availability of the draft Environmental Assessment (EA) for the proposed Anclote River, Florida Project and Gulf Intracoastal Waterway (GIWW) Cut P-41 (NEPA ID: EAXX-202-00-K3P-1765294248). The purpose of this project ia to maintain safe and efficient vessel navigation throughout the Anclote federal channel and Gulf Intracoastal Waterway (GIWW) Cut P-41.

In addition, the Corps is initiating coordination with the National Marine Fisheries Service under the Essential Fish Habitat (EFH) provisions of the Magnuson-Stevens Fishery Conservation and Management Act (MSFCMA). Per the 2019 Findings between NMFS' Southeast Regional Office and South Atlantic Division, U.S. Army Corps of Engineers, the EFH Assessment for the project was integrated within this draft EA Per 50 CFR 600.920(e)(3), an EFH Assessment must include specific items. Each item will be addressed in the table below with a reference to where the information is located in the EA.

EFH Required Item	EA Location(s)
Description of the Proposed Action	What is the action? - <i>Section 1.1 Introduction</i> - <i>Section 3 Alternatives</i> - <i>Section 5.0 Recommended Plan</i> What is the purpose of the action? - <i>Section 1.5 Purpose and Need</i>

	<p>How, when and where will it be undertaken?</p> <ul style="list-style-type: none"> - <i>Section 1.1 Introduction</i> - <i>Section 1.3 location</i> <p>What will be the result of the action?</p> <ul style="list-style-type: none"> - <i>Section 3 and section 5 Preferred Alternative</i>
Analysis of the potential adverse effects (individual and cumulative) of the action on EFH and the managed species	<p>What EFH will be affected by the action? What are the adverse effects to EFH that could occur as a result of this action? How would they impact managed species?/What would be the magnitude of effects?/What would the duration be?</p> <ul style="list-style-type: none"> - <i>Section 4.2 Essential Fish Habitat</i>
The Federal agency's conclusions regarding the effects of the action on EFH.	<ul style="list-style-type: none"> - <i>Section 4.2 Essential Fish Habitat</i>
Proposed Compensatory Mitigation	<ul style="list-style-type: none"> - <i>Proposed compensatory mitigation is being developed in conjunction with NMFS. A draft mitigation plan is available in appendix H of the EA. The Corps will continue to collaborate with NMFS on this matter.</i>
Avoidance and Minimization	<ul style="list-style-type: none"> - <i>N/A</i>

Additionally, the guidance states that for projects that may have substantial impacts on EFH, additional information may be necessary. The following additional items are considered and addressed throughout the EA:

EFH Additional Information Item	Draft EA Location(s)
Results of on-site studies to evaluate the habitat and/or site-specific effects of the project	<ul style="list-style-type: none"> - <i>Section 4.2 Essential Fish Habitat</i> - <i>Appendices E and H</i>
Review of pertinent literature and related information	<ul style="list-style-type: none"> - <i>Literature cited throughout draft EA</i>

Additional information is included in the Project NEPA documents located at this website under Pinellas County: <https://www.saj.usace.army.mil/About/Divisions-Offices/Planning/Environmental-Branch/Environmental-Documents/>.

The Corps has determined that the potential effects of the Preferred Alternative will have beneficial and temporary adverse impacts to EFH and no adverse effects on federally managed fish species. The magnitude of the potential impacts is minor and insignificant. Additional details on the Preferred Alternative are contained in the EA.

The Corps respectfully requests all comments under NEPA and the MSFCMA for the EA and proposed FONSI to be submitted within 30 days of receipt of this letter. The Corps appreciates the collaboration and input provided by the NMFS on this project. Any questions regarding this consultation should be directed to Ms. Rachel Case, via electronic mail at Rachel.s.case@usace.army.mil or by telephone at 904-232-1035.

Sincerely,

Gretchen Ehlinger, Ph.D.
Chief, Environmental Branch

Enclosure

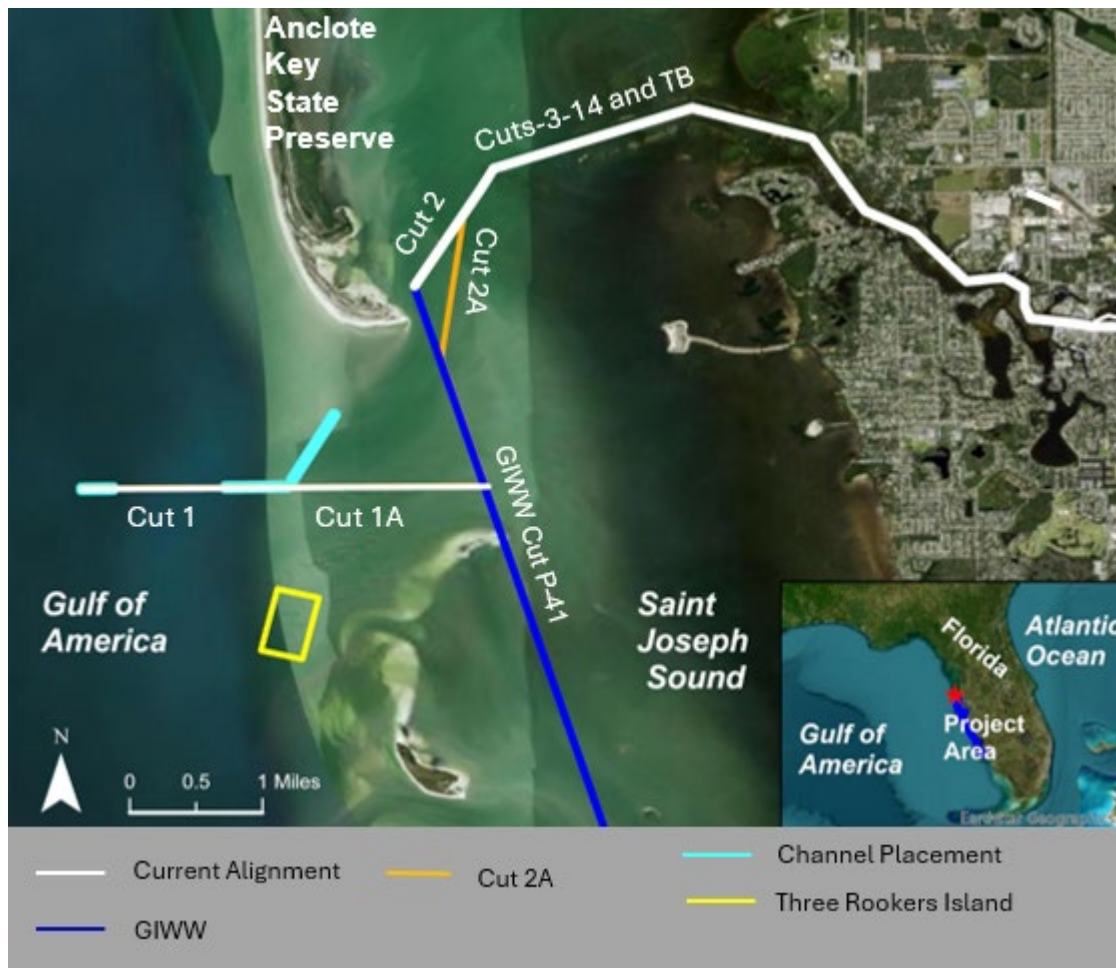


Figure 1. Map of the Preferred Alternative features. The Anclote federal channel is shown in white, the GIWW Cut P-41 is in royal blue and Cut 2A is in orange. The placement alternatives include in-water placement at Three Rookers Island (yellow) and in-water placement within the channel and previous channel cuts (light blue).



DEPARTMENT OF THE ARMY
U.S. ARMY CORPS OF ENGINEERS, JACKSONVILLE DISTRICT
701 SAN MARCO BOULEVARD
JACKSONVILLE, FLORIDA 32207
mmmm yyyy

Planning and Policy Division
Environmental Branch

To Whom it May Concern:

Pursuant to the National Environmental Policy Act of 1969, as amended (NEPA), and the U.S. Army Corps of Engineers Jacksonville District, (Corps) Regulation (32 CFR 651), this letter constitutes the Notice of Availability of the Environmental Assessment (EA) and proposed Finding of No Significant Impact (FONSI) for the proposed Anclote River, Florida Project (EAXX-202-00-K3P-1765294248). The purpose of this project is to maintain safe and efficient vessel navigation throughout the Anclote federal channel and Gulf Intracoastal Waterway (GIWW) Cut P-41. Anclote River is located on the west coast of Florida and borders Pinellas and Pasco Counties, approximately 20 miles north of Tampa. The federal channel begins in Tarpon Springs, runs through the St. Joseph Sound, and empties into the Gulf of America.

Federal maintenance events have occurred periodically in the inner channel (Cuts 3-14), which is the only portion of the channel that has been maintained. Federal channel Cuts 1, 2, and the GIWW have not been maintained since initial construction, which occurred prior to the development of NEPA and other environmental laws. Recent project placement occurred in an upland dredge material management area (DMMA) that is currently unavailable for use. Therefore, NEPA analysis will also evaluate newly proposed placement areas.

The Anclote River, Florida Project and GIWW Cut P-41 EA assesses various alternatives that evaluate environmental effects of the maintenance of the federal channel and GIWW, and placement options. Alternatives 2A ("Maintenance Dredging of Anclote Federal Channel and GIWW"), 3C ("In-water placement in the channel"), and 3D ("In-water placement Three Rookers Island") are carried forward as the Preferred Alternative (see Enclosure for map) which is summarized below:

- a. Maintenance dredging of Cuts 1-14, the turning basin and the GIWW Cut P-41 would occur on an as needed basis. The authorized depth of the channel is 9 feet (ft) plus 2 ft of allowable overdepth. The authorized width is 100 ft wide. If Cut 2A becomes authorized Alternative 2B will be the Preferred Alternative, adding Cut 2B to the authorized maintenance dredging.
- b. Material placement options include in-water placement, within portions of the channel and Three Rookers Island (Figure 3). Placement options would be selected based on project construction needs (ex. permitting, etc.) and capacity of the placement area.

- There are three locations within the channel with current capacity for placement, where up to 45,000 cubic yards (CY) of material could be placed to -10 ft mean lower low water (MLLW). The placement footprint is approximately 636,000 sq ft or 14.6 acres.
- Three Rookers Island placement is 2,500 ft by 1,500 ft. There is capacity for 95,000 CY of material that can be placed up to -8 ft MLLW, which would be considered beneficial use to provide a barrier for incoming wave energy.

Additional details on the Preferred Alternative can be found in the EA, which is available for your review on the Jacksonville District's Environmental planning website Pinellas County: <https://www.saj.usace.army.mil/About/Divisions-Offices/Planning/Environmental-Branch/Environmental-Documents/>.

The Corps requests questions or comments on the EA be submitted in writing by U.S. mail to the letterhead address (attn. Environmental Branch, Coastal Section) within 30 days from the date of this Notice of Availability. Questions concerning the project can be submitted to Ms. Rachel Case, by telephone at 904-232-1035 or via email Rachel.s.case@usace.army.mil.

Sincerely,

Gretchen S. Ehlinger, Ph.D.,
Chief, Environmental Branch

Enclosure

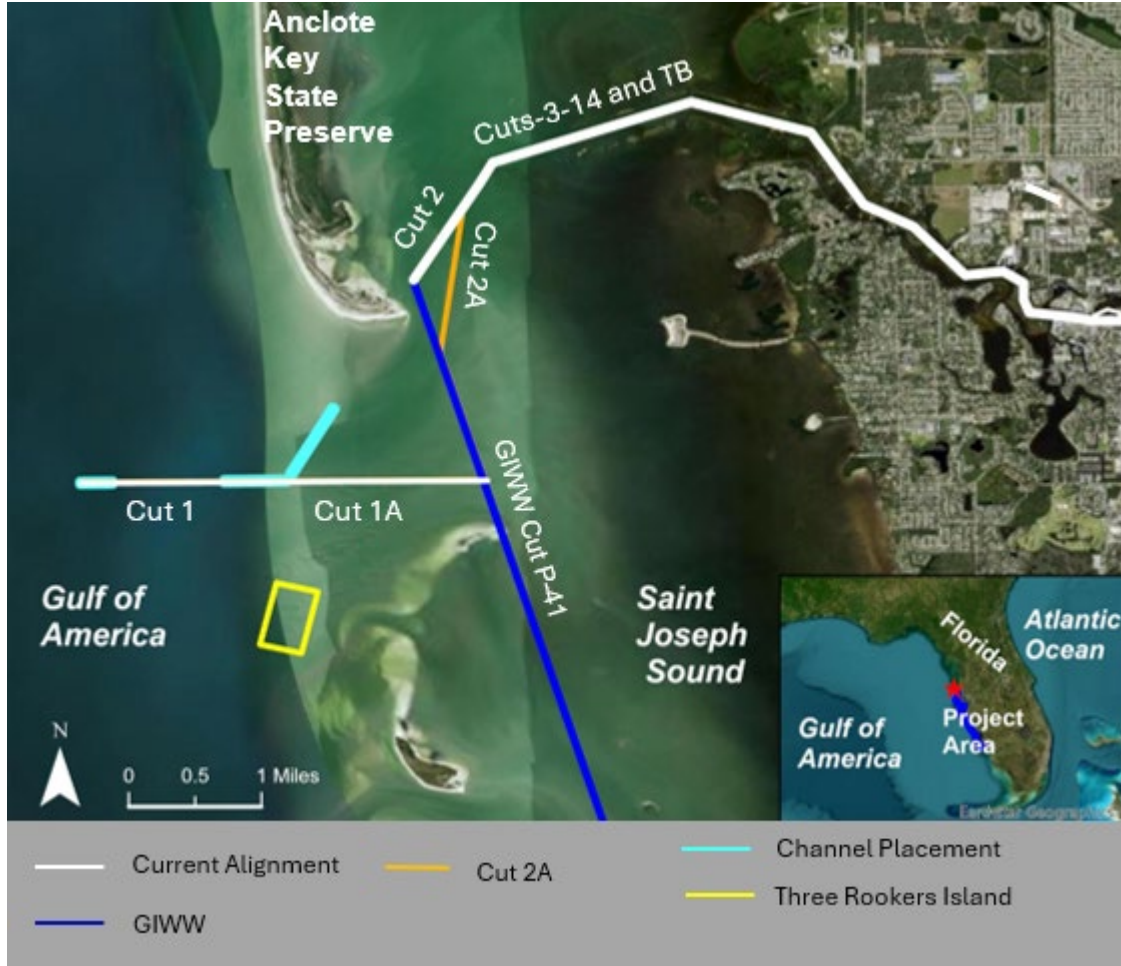


Figure 1. Map of the Preferred Alternative features. The Anclote federal channel is shown in white, the GIWW Cut P-41 is in royal blue and Cut 2A is in orange. The placement alternatives include in-water placement at Three Rookers Island (yellow) and in-water placement within the channel and previous channel cuts (light blue).



DEPARTMENT OF THE ARMY
U.S. ARMY CORPS OF ENGINEERS, JACKSONVILLE DISTRICT
701 SAN MARCO BOULEVARD
JACKSONVILLE, FLORIDA 32207

DD MMMM 2026

Planning and Policy Division
Environmental Branch

Lindsay Weaver Florida State Clearinghouse
Florida Department of Environmental Protection
2600 Blair Stine Road, M.S. 47
Tallahassee, Florida 32399

Ms. Weaver:

Pursuant to the National Environmental Policy Act of 1969, as amended (NEPA), and the U.S. Army Corps of Engineers, Jacksonville District (Corps), Regulation (32 CFR Part 651), this letter constitutes the Notice of Availability of the draft Environmental Assessment (EA) and Finding of No Significant Impact (FONSI) for the Anclote River, Florida Project (NEPA ID: EAXX-202-00-K3P-1765294248). The purpose of this project is to maintain safe and efficient vessel navigation throughout the federal channels, within Anclote River, FL and Gulf Intracoastal Waterway (GIWW) Cut P-41.

Anclote River is located on the west coast of Florida and borders Pinellas and Pasco Counties, approximately 20 miles north of Tampa. The Anclote federal channel begins in Tarpon Springs, runs through the St. Joseph Sound and empties into the Gulf of America. The Anclote River, Florida Project and GIWW Cut P-41 EA assesses various alternatives that evaluate environmental effects of the maintenance of the federal channel and GIWW, and placement options. Alternatives 2A ("Maintenance Dredging of Anclote Federal Channel and GIWW"), 3C ("In-water placement in the channel"), and 3D ("In-water placement Three Rookers Island") are carried forward as the Preferred Alternative (see Enclosure for map) which is summarized below:

- a. Maintenance dredging of Cuts 1-14, the turning basin and the GIWW Cut P-41 would occur on an as needed basis (likely between 5-10 years). The authorized depth of the channel is 9 feet (ft) plus 2 ft of allowable overdepth. The authorized width of the channel is 100 ft wide. If Cut 2A becomes authorized Alternative 2B will be the Preferred Alternative, adding Cut 2B to the authorized maintenance dredging.
- b. Material placement options include in-water placement, within portions of the channel and Three Rookers Island (Figure 3). Placement options would be selected based on project construction needs (ex. permitting, etc.) and capacity of the placement area.

- There are three locations within the channel with capacity for placement, where up to 45,000 cubic yards (CY) of material could be placed to -10 ft mean lower low water (MLLW). The placement footprint is approximately 636,000 sq ft or 14.6 acres.
- Three Rookers Island placement is 2,500 ft by 1,500 ft. There is capacity for 95,000 CY of material that can be placed up to -8 ft MLLW, which would be considered beneficial use to provide a barrier for incoming energy.

In compliance with the Coastal Zone Management Act of 1972 (CZMA), the Corps has prepared the Federal Consistency Determination (FCD) in accordance with 15 CFR 930 Subpart C. The FCD is included as an attachment and included with the draft EA as Appendix C. The Corps determined the proposed action is consistent, to the maximum extent practicable, with the enforceable policies of Florida's approved Coastal Management Program and State Water Quality Standards under the Clean Water Act of 1972 Water Quality Certification (WQC). The Corps respectfully requests concurrence on the project's FCD and WQC determination within 60 days of receipt of this letter and attached documentation. Additional information is included in the Project NEPA documents located at this website under Pinellas County: <https://www.saj.usace.army.mil/About/Divisions-Offices/Planning/Environmental-Branch/Environmental-Documents/>.

Questions concerning the project can be submitted to Ms. Rachel Case, by telephone at 904-232-1035 email at rachel.s.case@usace.army.mil.

Sincerely,

Gretchen Ehlinger, Ph.D.
Chief, Environmental Branch

Enclosure:

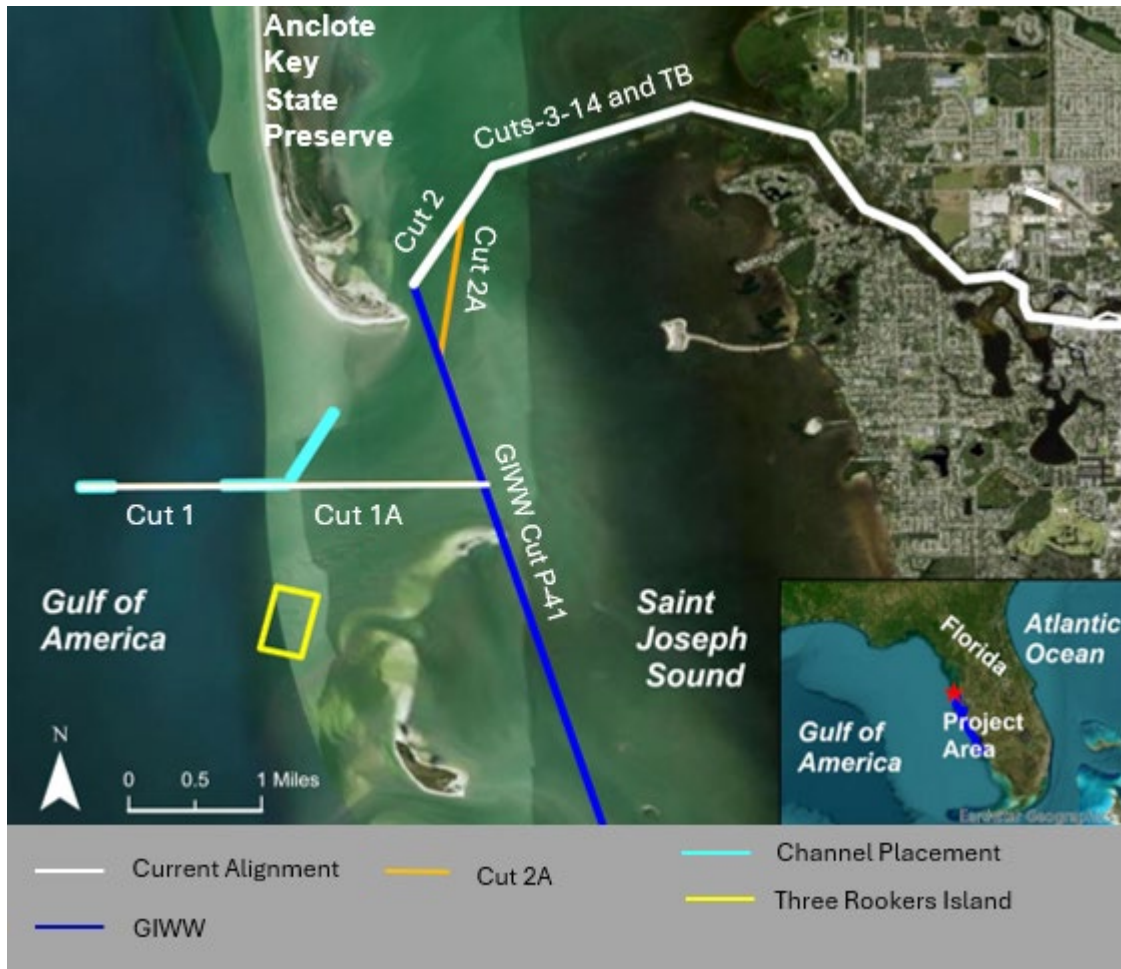


Figure 1. Map of the Preferred Alternative features. The Anclote federal channel is shown in white, the GIWW Cut P-41 is in royal blue and Cut 2A is in orange. The placement alternatives include in-water placement at Three Rookers Island (yellow) and in-water placement within the channel and previous channel cuts (light blue).



FLORIDA DEPARTMENT of STATE

RON DESANTIS
Governor

CORD BYRD
Secretary of State

US Army Corps of Engineers
701 San Marco Blvd.
Jacksonville, FL 32207-8175

February 23, 2026

RE: DHR Project File No.: 2024-5746-B Received by DHR: January 21, 2026
*PHASE I SUBMERGED CULTURAL RESOURCE ASSESSMENT SURVEY AND
ARCHAEOLOGICAL DIVER INVESTIGATIONS FOR THE ANCLOTE RIVER OPERATIONS
AND MAINTENANCE DREDGING, PLACEMENT, AND MITIGATION, PINELLAS
COUNTY, FLORIDA*

To Whom It May Concern:

Our office reviewed the referenced project in accordance with Section 106 of the *National Historic Preservation Act of 1966*, as amended, and its implementing regulations in *36 CFR Part 800: Protection of Historic Properties*, as well as Chapters 267.061 and 373.414, *Florida Statutes*, and implementing state regulations for possible effects on historic properties listed, or eligible for listing, in the *National Register of Historic Places*. The project is subject to compliance with requirements for Florida Bureau of Archaeological Research (FBAR) 1A-32 Permit No. 2425.064 and a United States Army Corps of Engineers (USACE) undertaking.

In June-July, November, and December 2025, SEARCH conducted the above referenced submerged cultural resource assessment survey (SCRAS) to support “the larger Anclote River Operations and Maintenance Dredging, Placement, and Mitigation project (Project) in Pinellas County, Florida.” The SCRAS consisted of a maritime remote-sensing survey of the submerged APE (a total of 1,356 acres). This included magnetometer, side-scan sonar, and sub-bottom profiler data collection and analysis as is required by DHR. SEARCH identified 115 magnetic anomalies, 16 acoustic contacts, and 7 sub-bottom features. As a result of the remote sensing,

“Anomalies M006 and M010 were investigated due to their association with a marked shipwreck location on NOAA navigation chart #11410... Subsequent diver investigation verified that Anomaly M006 was a broken crab trap with scattered metallic debris that does not require avoidance. The northern dive target (Target 1) for M010 does not require avoidance, as divers identified a modern, broken mushroom anchor, a cinderblock, and a chained brake disc attached to a PVC cage as the source of the magnetic anomaly. M010 Target 2 is aligned with the location of an unknown wreck first plotted on NOAA navigation chart #11410 in 1980. The presence of the shipwreck could not be verified, as no surface finds were identified, and as hydro-probing could not easily penetrate the seafloor beyond 1.5 m (5 ft) due to the deposit of scattered rock and broken limestone, which is presumably associated with the known previous dredge-spoil deposition at this location... SEARCH recommends no avoidance for M010 regarding the installation of seagrass... If the Project plans change and require a significant impact on the

Division of Historical Resources
R.A. Gray Building • 500 South Bronough Street • Tallahassee, Florida 32399
850.245.6300 • 850.245.6436 (Fax) • FLHeritage.com



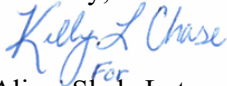
seafloor beyond 1.5 m [5 ft], then SEARCH recommends further consultation with SHPO to determine whether additional work is necessary.

Analysis of the sub-bottom profiler dataset identified seven locations that may represent ASLFs containing potentially intact margin deposits. SEARCH has applied a 15 m (49 ft) avoidance buffer around each potential margin deposit and recommends avoidance of subsurface impacts to each margin and its associated buffer. If avoidance is not feasible, SEARCH recommends coordination with SHPO.”

Based on the information provided, our office concurs with the survey results and recommendations presented and finds that, conditional upon the avoidance of the seven margin deposits by the 15m avoidance buffer recommended in-text, and provided submerged ground disturbance in the area of M010 Target 2 does not exceed 1.5m, the proposed project should have no adverse effect on historic properties listed, or eligible for listing, in the NRHP. Should plans change in regard to activities in the vicinity of Target 2, or should the margin deposits prove unavoidable, we recommend consultation with our office prior to impacting these areas. Finally, we find the submitted report complete and sufficient in accordance with Chapter 1A-46, *Florida Administrative Code*.

If you have any questions, please contact Ethan Putman, Historic Preservationist, by email at Ethan.Putman@dos.fl.gov.

Sincerely,



For
Alissa Slade Lotane
Director, Division of Historical Resources
& State Historic Preservation Officer



DEPARTMENT OF THE ARMY
U.S. ARMY CORPS OF ENGINEERS, JACKSONVILLE DISTRICT
701 SAN MARCO BOULEVARD
JACKSONVILLE, FLORIDA 32207

January 21, 2026

Planning and Policy Division
Environmental Branch

Ms. RaeLynn Butler
Secretary of Culture and Humanities
Muscogee Nation
P.O. Box 580
Okmulgee, Oklahoma 74447

Subject: Draft Report Anclote River O&M Dredging, Placement, and Mitigation, Pinellas County, Florida

Dear Ms. Butler:

The U.S. Army Corps of Engineers, Jacksonville District (Corps) is studying the environmental effects associated with proposed changes to the alignment of the navigation channel of the Anclote River, operations and maintenance dredging, placement of dredged material, and areas of environmental mitigation in Pinellas County, Florida (Figure 1). The navigation channel is proposed to be realigned from a section of the Gulf Intracoastal Waterway (GIWW, Cut P-41) to a section of Cut-2 of the existing Anclote River navigation channel, which may subsequently be dredged (see proposed Cut 2a in Figure 2). The dredged material is proposed to be placed either in an area west of Three Rooker Island, adjacent to Fred Howard Park and Sunset Park, and/or within the navigation channel. Areas for environmental mitigation, as well as pipelines leading to them, are also included in proposed project plans. The area of potential effects (APE) includes the navigation channel from Cut 1 to the turning basin adjacent to Tarpon Springs, in addition to the dredged material placement areas, pipelines, and mitigation areas (see Figure 1).

In 2017, the Corps has previously surveyed and consulted on Operations and Maintenance (O&M) of the Anclote River navigation channel (see Florida Master Site File [FMSF] No. 24837). In a letter dated January 25, 2018, the Florida State Historic Preservation Officer (SHPO) concurred that dredging of the navigational channel would have no effect to historic properties listed in or eligible for listing in the National Register of Historic Places (NRHP) (DHR Project File No. 2018-0003), provided avoidance areas were maintained (USACE-243, Target 1).

In 2019, a combined submerged and terrestrial cultural resources survey was performed (FMSF #26394). The submerged survey covered Cuts 1, 1A, Cut-2, Cut-2A, a portion of Cut P-41 of the Gulf Intracoastal Waterway (GIWW), and a placement area

to the west of Three Rookers Island. The terrestrial survey focused on a potential upload disposal area. Five submerged anomalies (USACE-106 to USACE-110) and one upland eligible archaeological site (8PA10) were identified. In a letter dated August 19, 2019, the Corps agreed to avoid the five submerged anomalies if diver identification investigation was not possible and to avoid the terrestrial site (see DHR Project File No. 2019-2895B).

In 2025, the Corps contracted SEARCH to perform a submerged cultural resources survey of the APE. The survey identified 121 magnetic anomalies and two 16 sonar contacts. One existing avoidance area within the channel realignment area was not relocated (USACE-106) and the second avoidance area (USACE-110) in this location was reidentified as an ancient, submerged landscape feature (ASLF; Feature 1) (see Figure 2 for details). This represents one of seven ASLFs identified within the APE. Two features are located in proximity to Cut-2A (Features 1 and 2), two features are located within the Three Rooker Island placement area (Features 3 and 4), and three located in the expanded islands mitigation area east of the GIWW channel (Features 5, 6, and 7) (see Figures 3 and 4 for locations of remaining ASLFs).

These features will be surrounded by a buffer of 50 feet and avoided by construction activities that may disturb the seafloor, which includes dredging, spudding, or anchoring. Features in the placement area (Features 3 and 4) will not be affected by the placement of dredged material. Features in the mitigation area (Features 5, 6, and 7) will not be affected by planting of seagrass or other environmental mitigation measures.

As the target associated with the USACE-106 avoidance area was not relocated, the Corps has determined that this location no longer requires avoidance. Likewise, as USACE-110 has been remapped and reidentified as a component of ASLF Feature 1, the Corps has determined updating USACE-110 as an avoidance area to represent Feature 1. The remaining ASLF will be created as new avoidance areas: Feature 2 as USACE-244, Feature 3 as USACE-245, Feature 4 as USACE-246, Feature 5 as USACE-247, Feature 6 as USACE-248, and Feature 7 as USACE-249.

In addition to the survey, two newly identified targets (M006 and M010) located in the expanded islands mitigation area were investigated by diver identification due to their association with a marked shipwreck (see Figure 4). M006 was determined not to be cultural significant. M010 consisted of two targets; the first was determined to be modern debris. Cultural material was not identified for the second target within five feet below surface and will not be affected by environmental mitigation measures for this

undertaking. As this location is in proximity to previously accumulated spoil piles, the Corps has determined that no additional avoidance is required.

Pursuant to Section 106 of that National Historic Preservation Act (54 U.S.C. § 306108), as amended and its implementing regulations (36 CFR 800), the Corps kindly requests your comments on the following: 1) removal of avoidance for USACE-106 (M005, M006), 2) updating avoidance for USACE-110 to reflect current mapping of Feature 1, and 3) determination of no adverse effect for the undertaking contingent on continued avoidance of USACE-107 (M066, M067) in Cut 1, USACE-243 (M012 and M013) in Cut 3, and establishing new avoidance areas for Features 2 through 7 (USACE-244 through USACE-249). In addition, the Corps requests any comments on the enclosed draft report within 30 days from receipt of this letter. Questions or concerns may be directed to Dr. Zuzana Chovanec, Archeologist at 904-232-2176 or by email at Zuzana.Chovanec@usace.army.mil within 30 days of the date of this letter.

Sincerely,



for

Meredith A. Moreno, M.A., RPA
Cultural Resources Chief
Deputy, Environmental Branch

Enclosures

cc:

Ms. RaeLynn Butler, Secretary of Culture and Humanities,
RaeButler@muscogeeneration.com

Dr. Savannah Waters, THPO, swaters@muscogeeneration.com
Muscogee Nation Section 106, Section106@muscogeeneration.com



**US Army Corps of Engineers
Jacksonville District**



**Anclote River O&M
Dredging, Placement, &
Mitigation**

Submerged Cultural Resources
Assessment Survey and
Diver Investigations

Pinellas County, Florida

Legend

- Federal Channel
- Survey APE



Figure 1: Anclote River Navigation Channel and Cultural Survey APE



**US Army Corps of
Engineers
Jacksonville District**






**Anclote River O&M
Dredging, Placement, &
Mitigation**

Submerged Cultural Resources
Assessment Survey and
Diver Investigations

Pinellas County, Florida

Legend

-  New Avoidance - ASLF
-  Existing Avoidance
-  Federal Channel

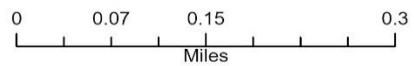


Figure 2: Cut 2A Realignment, Existing Avoidance Areas, New Avoidance Areas

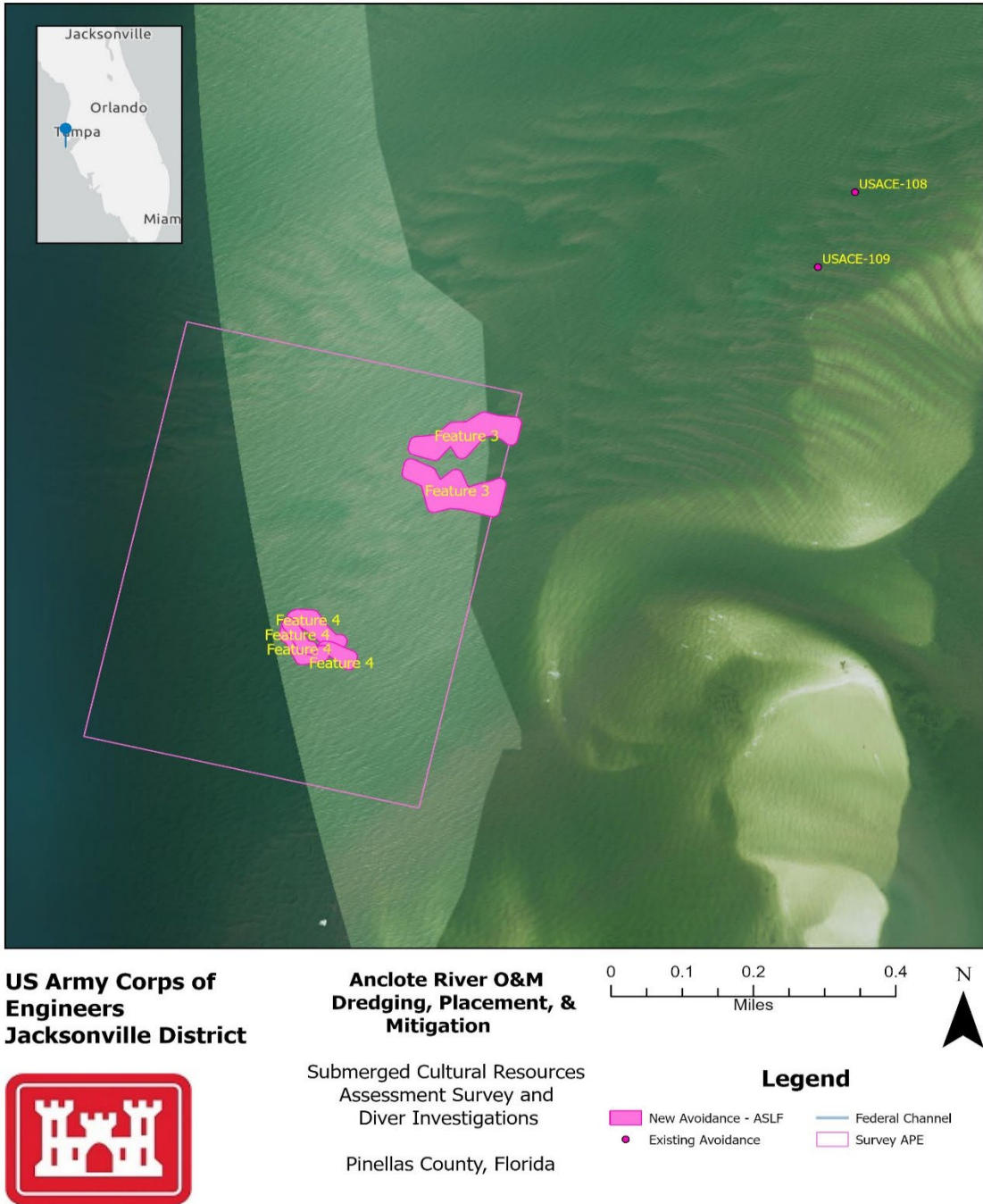
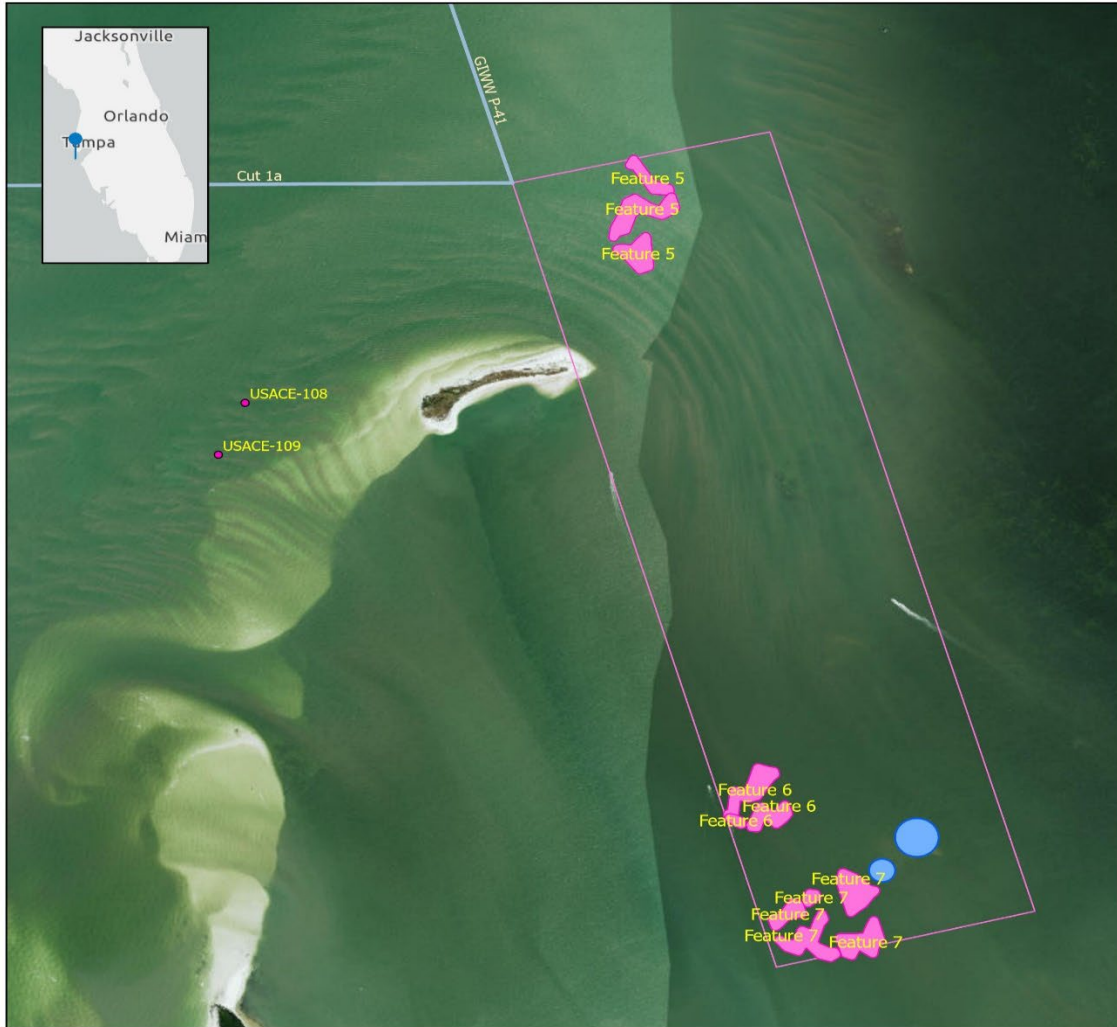


Figure 3: New Avoidances in Three Rooker Island Placement Area



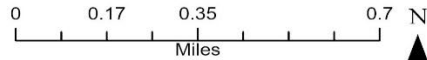
**US Army Corps of Engineers
Jacksonville District**



**Anclote River O&M
Dredging, Placement, &
Mitigation**

Submerged Cultural Resources
Assessment Survey and
Diver Investigations

Pinellas County, Florida



Legend

-  New Avoidance - ASLF
-  Existing Avoidance
-  New Dive Target Locations
-  Federal Channel
-  Survey APE

Figure 4: Diver ID locations and avoidance areas in Expanded Islands Mitigation Area



DEPARTMENT OF THE ARMY
U.S. ARMY CORPS OF ENGINEERS, JACKSONVILLE DISTRICT
701 SAN MARCO BOULEVARD
JACKSONVILLE, FLORIDA 32207

January 21, 2026

Planning and Policy Division
Environmental Branch

Mr. Jason Daniel
Tribal Historic Preservation Officer
Miccosukee Tribe of Indians of Florida
P.O. Box 440021
Tamiami Station Miami, Florida 33144

Subject: Draft Report Anclote River O&M Dredging, Placement, and Mitigation, Pinellas County, Florida

Dear Mr. Daniel:

The U.S. Army Corps of Engineers, Jacksonville District (Corps) is studying the environmental effects associated with proposed changes to the alignment of the navigation channel of the Anclote River, operations and maintenance dredging, placement of dredged material, and areas of environmental mitigation in Pinellas County, Florida (Figure 1). The navigation channel is proposed to be realigned from a section of the Gulf Intracoastal Waterway (GIWW, Cut P-41) to a section of Cut-2 of the existing Anclote River navigation channel, which may subsequently be dredged (see proposed Cut 2a in Figure 2). The dredged material is proposed to be placed either in an area west of Three Rooker Island, adjacent to Fred Howard Park and Sunset Park, and/or within the navigation channel. Areas for environmental mitigation, as well as pipelines leading to them, are also included in proposed project plans. The area of potential effects (APE) includes the navigation channel from Cut 1 to the turning basin adjacent to Tarpon Springs, in addition to the dredged material placement areas, pipelines, and mitigation areas (see Figure 1).

In 2017, the Corps has previously surveyed and consulted on Operations and Maintenance (O&M) of the Anclote River navigation channel (see Florida Master Site File [FMSF] No. 24837). In a letter dated January 25, 2018, the Florida State Historic Preservation Officer (SHPO) concurred that dredging of the navigational channel would have no effect to historic properties listed in or eligible for listing in the National Register of Historic Places (NRHP) (DHR Project File No. 2018-0003), provided avoidance areas were maintained (USACE-243, Target 1).

In 2019, a combined submerged and terrestrial cultural resources survey was performed (FMSF #26394). The submerged survey covered Cuts 1, 1A, Cut-2, Cut-2A, a portion of Cut P-41 of the Gulf Intracoastal Waterway (GIWW), and a placement area

to the west of Three Rookers Island. The terrestrial survey focused on a potential upload disposal area. Five submerged anomalies (USACE-106 to USACE-110) and one upland eligible archaeological site (8PA10) were identified. In a letter dated August 19, 2019, the Corps agreed to avoid the five submerged anomalies if diver identification investigation was not possible and to avoid the terrestrial site (see DHR Project File No. 2019-2895B).

In 2025, the Corps contracted SEARCH to perform a submerged cultural resources survey of the APE. The survey identified 121 magnetic anomalies and two 16 sonar contacts. One existing avoidance area within the channel realignment area was not relocated (USACE-106) and the second avoidance area (USACE-110) in this location was reidentified as an ancient, submerged landscape feature (ASLF; Feature 1) (see Figure 2 for details). This represents one of seven ASLFs identified within the APE. Two features are located in proximity to Cut-2A (Features 1 and 2), two features are located within the Three Rooker Island placement area (Features 3 and 4), and three located in the expanded islands mitigation area east of the GIWW channel (Features 5, 6, and 7) (see Figures 3 and 4 for locations of remaining ASLFs).

These features will be surrounded by a buffer of 50 feet and avoided by construction activities that may disturb the seafloor, which includes dredging, spudding, or anchoring. Features in the placement area (Features 3 and 4) will not be affected by the placement of dredged material. Features in the mitigation area (Features 5, 6, and 7) will not be affected by planting of seagrass or other environmental mitigation measures.

As the target associated with the USACE-106 avoidance area was not relocated, the Corps has determined that this location no longer requires avoidance. Likewise, as USACE-110 has been remapped and reidentified as a component of ASLF Feature 1, the Corps has determined updating USACE-110 as an avoidance area to represent Feature 1. The remaining ASLF will be created as new avoidance areas: Feature 2 as USACE-244, Feature 3 as USACE-245, Feature 4 as USACE-246, Feature 5 as USACE-247, Feature 6 as USACE-248, and Feature 7 as USACE-249.

In addition to the survey, two newly identified targets (M006 and M010) located in the expanded islands mitigation area were investigated by diver identification due to their association with a marked shipwreck (see Figure 4). M006 was determined not to be cultural significant. M010 consisted of two targets; the first was determined to be modern debris. Cultural material was not identified for the second target within five feet below surface and will not be affected by environmental mitigation measures for this

undertaking. As this location is in proximity to previously accumulated spoil piles, the Corps has determined that no additional avoidance is required.

Pursuant to Section 106 of that National Historic Preservation Act (54 U.S.C. § 306108), as amended and its implementing regulations (36 CFR 800), the Corps kindly requests your comments on the following: 1) removal of avoidance for USACE-106 (M005, M006), 2) updating avoidance for USACE-110 to reflect current mapping of Feature 1, and 3) determination of no adverse effect for the undertaking contingent on continued avoidance of USACE-107 (M066, M067) in Cut 1, USACE-243 (M012 and M013) in Cut 3, and establishing new avoidance areas for Features 2 through 7 (USACE-244 through USACE-249). In addition, the Corps requests any comments on the enclosed draft report within 30 days from receipt of this letter. Questions or concerns may be directed to Dr. Zuzana Chovanec, Archeologist at 904-232-2176 or by email at Zuzana.Chovanec@usace.army.mil within 30 days of the date of this letter.

Sincerely,



for

Meredith A. Moreno, M.A., RPA
Cultural Resources Chief
Deputy, Environmental Branch

Enclosures

cc:

Mr. Jason Daniel, THPO, JasonD@miccosukeetribe.com



**US Army Corps of
Engineers
Jacksonville District**



**Anclote River O&M
Dredging, Placement, &
Mitigation**

Submerged Cultural Resources
Assessment Survey and
Diver Investigations

Pinellas County, Florida

Legend

- Federal Channel
- Survey APE



Figure 1: Anclote River Navigation Channel and Cultural Survey APE



**US Army Corps of
Engineers
Jacksonville District**






**Anclote River O&M
Dredging, Placement, &
Mitigation**

Submerged Cultural Resources
Assessment Survey and
Diver Investigations

Pinellas County, Florida

Legend

-  New Avoidance - ASLF
-  Existing Avoidance
-  Federal Channel

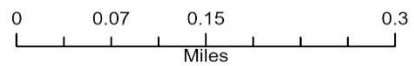


Figure 2: Cut 2A Realignment, Existing Avoidance Areas, New Avoidance Areas

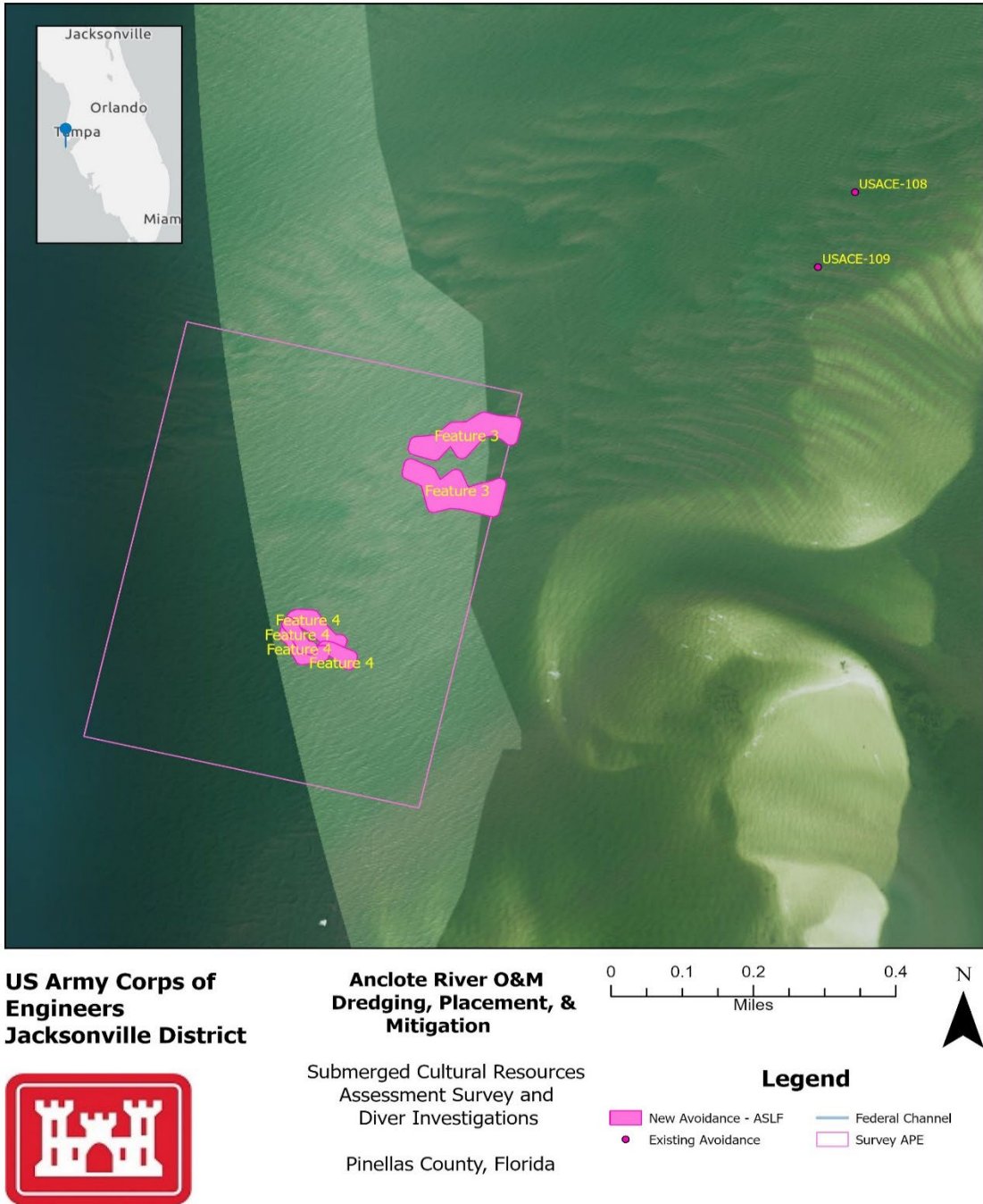
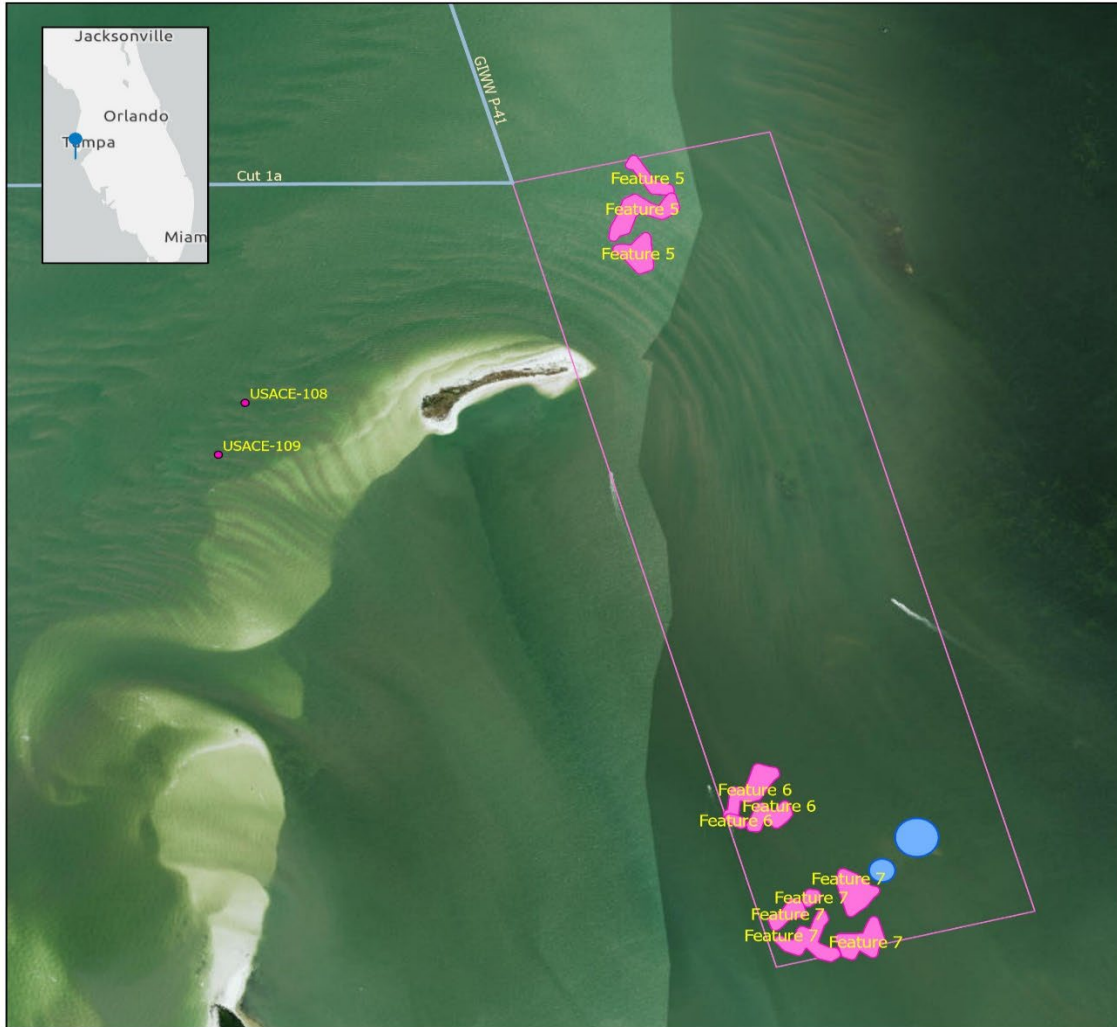


Figure 3: New Avoidances in Three Rooker Island Placement Area



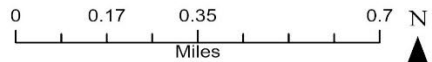
**US Army Corps of Engineers
Jacksonville District**



**Anclote River O&M
Dredging, Placement, &
Mitigation**

Submerged Cultural Resources
Assessment Survey and
Diver Investigations

Pinellas County, Florida



Legend

-  New Avoidance - ASLF
-  Existing Avoidance
-  New Dive Target Locations
-  Federal Channel
-  Survey APE

Figure 4: Diver ID locations and avoidance areas in Expanded Islands Mitigation Area



DEPARTMENT OF THE ARMY
U.S. ARMY CORPS OF ENGINEERS, JACKSONVILLE DISTRICT
701 SAN MARCO BOULEVARD
JACKSONVILLE, FLORIDA 32207

January 21, 2026

Planning and Policy Division
Environmental Branch

Ms. Alissa Slade Lotane
State Historic Preservation Officer
Division of Historical Resources
500 South Bronough Street
R.A. Gray Building, Room 305
Tallahassee, FL 32399-0250

Subject: Draft Report Anclote River O&M Dredging, Placement, and Mitigation, Pinellas County, Florida

Dear Ms. Lotane:

The U.S. Army Corps of Engineers, Jacksonville District (Corps) is studying the environmental effects associated with proposed changes to the alignment of the navigation channel of the Anclote River, operations and maintenance dredging, placement of dredged material, and areas of environmental mitigation in Pinellas County, Florida (Figure 1). The navigation channel is proposed to be realigned from a section of the Gulf Intracoastal Waterway (GIWW, Cut P-41) to a section of Cut-2 of the existing Anclote River navigation channel, which may subsequently be dredged (see proposed Cut 2a in Figure 2). The dredged material is proposed to be placed either in an area west of Three Rooker Island, adjacent to Fred Howard Park and Sunset Park, and/or within the navigation channel. Areas for environmental mitigation, as well as pipelines leading to them, are also included in proposed project plans. The area of potential effects (APE) includes the navigation channel from Cut 1 to the turning basin adjacent to Tarpon Springs, in addition to the dredged material placement areas, pipelines, and mitigation areas (see Figure 1).

In 2017, the Corps has previously surveyed and consulted on Operations and Maintenance (O&M) of the Anclote River navigation channel (see Florida Master Site File [FMSF] No. 24837). In a letter dated January 25, 2018, the Florida State Historic Preservation Officer (SHPO) concurred that dredging of the navigational channel would have no effect to historic properties listed in or eligible for listing in the National Register of Historic Places (NRHP) (DHR Project File No. 2018-0003), provided avoidance areas were maintained (USACE-243, Target 1).

In 2019, a combined submerged and terrestrial cultural resources survey was performed (FMSF #26394). The submerged survey covered Cuts 1, 1A, Cut-2, Cut-2A,

a portion of Cut P-41 of the Gulf Intracoastal Waterway (GIWW), and a placement area to the west of Three Rookers Island. The terrestrial survey focused on a potential upload disposal area. Five submerged anomalies (USACE-106 to USACE-110) and one upland eligible archaeological site (8PA10) were identified. In a letter dated August 19, 2019, the Corps agreed to avoid the five submerged anomalies if diver identification investigation was not possible and to avoid the terrestrial site (see DHR Project File No. 2019-2895B).

In 2025, the Corps contracted SEARCH to perform a submerged cultural resources survey of the APE. The survey identified 121 magnetic anomalies and two 16 sonar contacts. One existing avoidance area within the channel realignment area was not relocated (USACE-106) and the second avoidance area (USACE-110) in this location was reidentified as an ancient, submerged landscape feature (ASLF; Feature 1) (see Figure 2 for details). This represents one of seven ASLFs identified within the APE. Two features are located in proximity to Cut-2A (Features 1 and 2), two features are located within the Three Rooker Island placement area (Features 3 and 4), and three located in the expanded islands mitigation area east of the GIWW channel (Features 5, 6, and 7) (see Figures 3 and 4 for locations of remaining ASLFs).

These features will be surrounded by a buffer of 50 feet and avoided by construction activities that may disturb the seafloor, which includes dredging, spudding, or anchoring. Features in the placement area (Features 3 and 4) will not be affected by the placement of dredged material. Features in the mitigation area (Features 5, 6, and 7) will not be affected by planting of seagrass or other environmental mitigation measures.

As the target associated with the USACE-106 avoidance area was not relocated, the Corps has determined that this location no longer requires avoidance. Likewise, as USACE-110 has been remapped and reidentified as a component of ASLF Feature 1, the Corps has determined updating USACE-110 as an avoidance area to represent Feature 1. The remaining ASLF will be created as new avoidance areas: Feature 2 as USACE-244, Feature 3 as USACE-245, Feature 4 as USACE-246, Feature 5 as USACE-247, Feature 6 as USACE-248, and Feature 7 as USACE-249.

In addition to the survey, two newly identified targets (M006 and M010) located in the expanded islands mitigation area were investigated by diver identification due to their association with a marked shipwreck (see Figure 4). M006 was determined not to be cultural significant. M010 consisted of two targets; the first was determined to be modern debris. Cultural material was not identified for the second target within five feet below surface and will not be affected by environmental mitigation measures for this

undertaking. As this location is in proximity to previously accumulated spoil piles, the Corps has determined that no additional avoidance is required.

Pursuant to Section 106 of that National Historic Preservation Act (54 U.S.C. § 306108), as amended and its implementing regulations (36 CFR 800), the Corps kindly requests your comments on the following: 1) removal of avoidance for USACE-106 (M005, M006), 2) updating avoidance for USACE-110 to reflect current mapping of Feature 1, and 3) determination of no adverse effect for the undertaking contingent on continued avoidance of USACE-107 (M066, M067) in Cut 1, USACE-243 (M012 and M013) in Cut 3, and establishing new avoidance areas for Features 2 through 7 (USACE-244 through USACE-249). In addition, the Corps requests any comments on the enclosed draft report within 30 days from receipt of this letter. Questions or concerns may be directed to Dr. Zuzana Chovanec, Archeologist at 904-232-2176 or by email at Zuzana.Chovanec@usace.army.mil within 30 days of the date of this letter.

Sincerely,



for

Meredith A. Moreno, M.A., RPA
Cultural Resources Chief
Deputy, Environmental Branch

Enclosures

cc:

Ms. Alissa Slade Lotane, DHR, SHPO, alissa.lotane@dos.myflorida.com

Ms. Kelly Chase, DHR, Supervisor of Compliance Review,
kelly.chase@dos.myflorida.com

Mr. Ethan Putman, DHR, Historic Preservationist, Ethan.Putman@dos.myflorida.com
DHR, Compliance Review, CompliancePermits@dos.myflorida.com



**US Army Corps of
Engineers
Jacksonville District**



**Anclote River O&M
Dredging, Placement, &
Mitigation**

Submerged Cultural Resources
Assessment Survey and
Diver Investigations

Pinellas County, Florida

Legend

- Federal Channel
- Survey APE

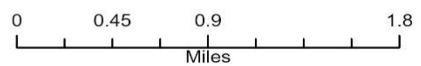


Figure 1: Anclote River Navigation Channel and Cultural Survey APE



**US Army Corps of Engineers
Jacksonville District**






**Anclote River O&M
Dredging, Placement, &
Mitigation**

Submerged Cultural Resources
Assessment Survey and
Diver Investigations

Pinellas County, Florida

Legend

-  New Avoidance - ASLF
-  Existing Avoidance
-  Federal Channel

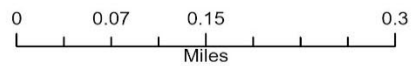


Figure 2: Cut 2A Realignment, Existing Avoidance Areas, New Avoidance Areas

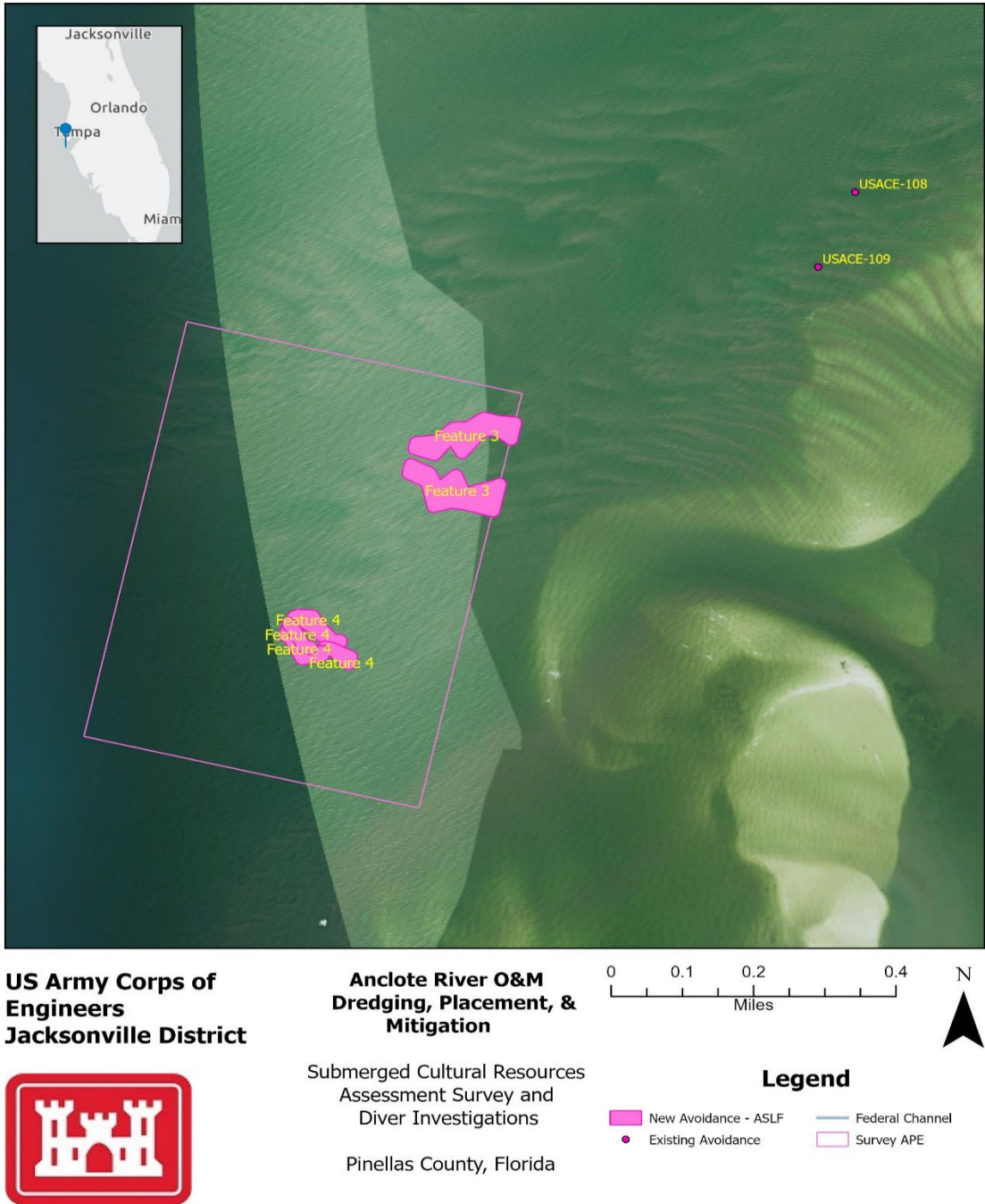
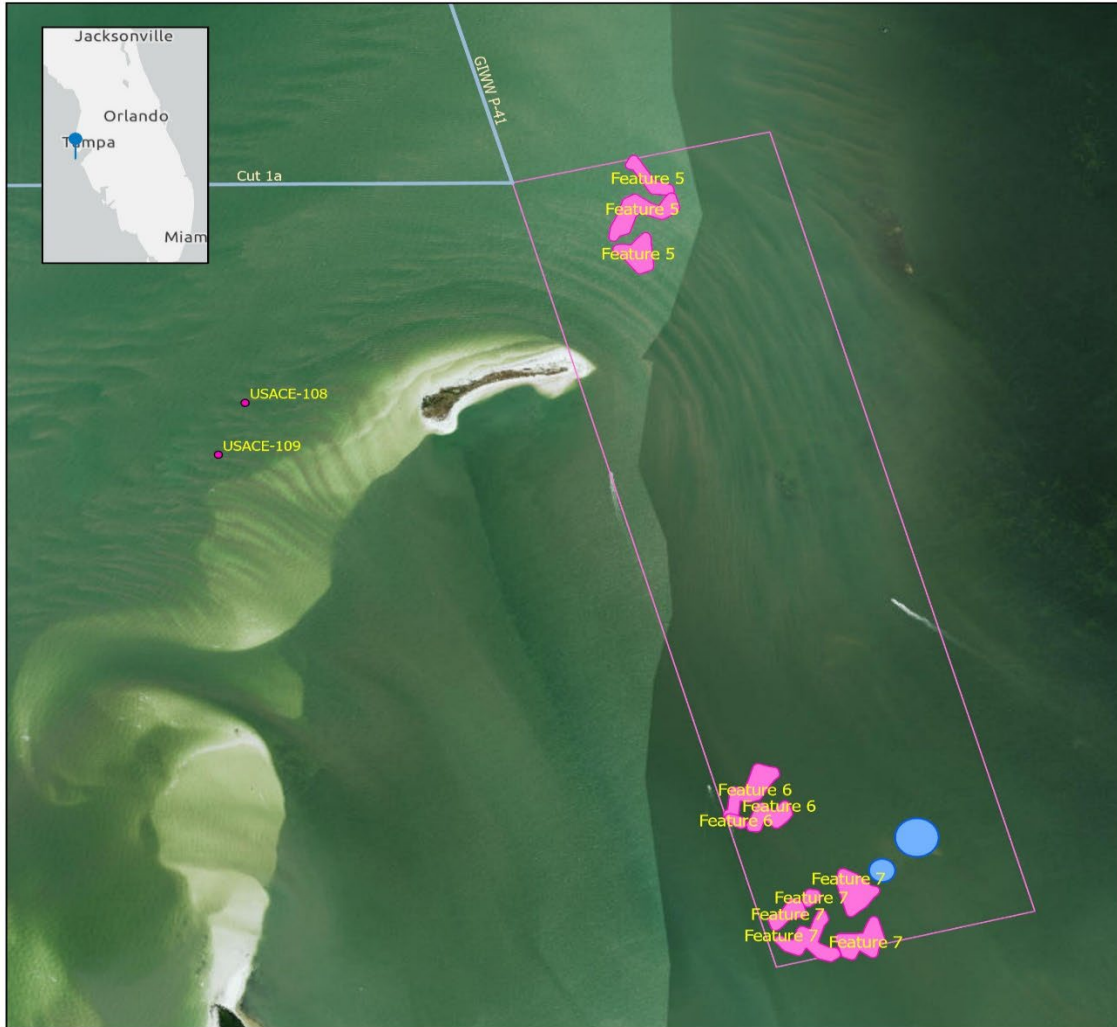


Figure 3: New Avoidances in Three Rooker Island Placement Area



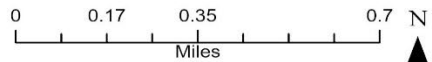
**US Army Corps of
Engineers
Jacksonville District**



**Anclote River O&M
Dredging, Placement, &
Mitigation**

Submerged Cultural Resources
Assessment Survey and
Diver Investigations

Pinellas County, Florida



Legend

-  New Avoidance - ASLF
-  Existing Avoidance
-  New Dive Target Locations
-  Federal Channel
-  Survey APE

Figure 4: Diver ID locations and avoidance areas in Expanded Islands Mitigation Area



DEPARTMENT OF THE ARMY
U.S. ARMY CORPS OF ENGINEERS, JACKSONVILLE DISTRICT
701 SAN MARCO BOULEVARD
JACKSONVILLE, FLORIDA 32207

January 21, 2026

Planning and Policy Division
Environmental Branch

Tribal Historic Preservation Officer
Seminole Nation of Oklahoma
P.O. Box 1498
Wewoka, Oklahoma 74884

Subject: Draft Report Anclote River O&M Dredging, Placement, and Mitigation, Pinellas County, Florida

To Whom It May Concern:

The U.S. Army Corps of Engineers, Jacksonville District (Corps) is studying the environmental effects associated with proposed changes to the alignment of the navigation channel of the Anclote River, operations and maintenance dredging, placement of dredged material, and areas of environmental mitigation in Pinellas County, Florida (Figure 1). The navigation channel is proposed to be realigned from a section of the Gulf Intracoastal Waterway (GIWW, Cut P-41) to a section of Cut-2 of the existing Anclote River navigation channel, which may subsequently be dredged (see proposed Cut 2a in Figure 2). The dredged material is proposed to be placed either in an area west of Three Rooker Island, adjacent to Fred Howard Park and Sunset Park, and/or within the navigation channel. Areas for environmental mitigation, as well as pipelines leading to them, are also included in proposed project plans. The area of potential effects (APE) includes the navigation channel from Cut 1 to the turning basin adjacent to Tarpon Springs, in addition to the dredged material placement areas, pipelines, and mitigation areas (see Figure 1).

In 2017, the Corps has previously surveyed and consulted on Operations and Maintenance (O&M) of the Anclote River navigation channel (see Florida Master Site File [FMSF] No. 24837). In a letter dated January 25, 2018, the Florida State Historic Preservation Officer (SHPO) concurred that dredging of the navigational channel would have no effect to historic properties listed in or eligible for listing in the National Register of Historic Places (NRHP) (DHR Project File No. 2018-0003), provided avoidance areas were maintained (USACE-243, Target 1).

In 2019, a combined submerged and terrestrial cultural resources survey was performed (FMSF #26394). The submerged survey covered Cuts 1, 1A, Cut-2, Cut-2A, a portion of Cut P-41 of the Gulf Intracoastal Waterway (GIWW), and a placement area to the west of Three Rookers Island. The terrestrial survey focused on a potential

upload disposal area. Five submerged anomalies (USACE-106 to USACE-110) and one upland eligible archaeological site (8PA10) were identified. In a letter dated August 19, 2019, the Corps agreed to avoid the five submerged anomalies if diver identification investigation was not possible and to avoid the terrestrial site (see DHR Project File No. 2019-2895B).

In 2025, the Corps contracted SEARCH to perform a submerged cultural resources survey of the APE. The survey identified 121 magnetic anomalies and two 16 sonar contacts. One existing avoidance area within the channel realignment area was not relocated (USACE-106) and the second avoidance area (USACE-110) in this location was reidentified as an ancient, submerged landscape feature (ASLF; Feature 1) (see Figure 2 for details). This represents one of seven ASLFs identified within the APE. Two features are located in proximity to Cut-2A (Features 1 and 2), two features are located within the Three Rooker Island placement area (Features 3 and 4), and three located in the expanded islands mitigation area east of the GIWW channel (Features 5, 6, and 7) (see Figures 3 and 4 for locations of remaining ASLFs).

These features will be surrounded by a buffer of 50 feet and avoided by construction activities that may disturb the seafloor, which includes dredging, spudding, or anchoring. Features in the placement area (Features 3 and 4) will not be affected by the placement of dredged material. Features in the mitigation area (Features 5, 6, and 7) will not be affected by planting of seagrass or other environmental mitigation measures.

As the target associated with the USACE-106 avoidance area was not relocated, the Corps has determined that this location no longer requires avoidance. Likewise, as USACE-110 has been remapped and reidentified as a component of ASLF Feature 1, the Corps has determined updating USACE-110 as an avoidance area to represent Feature 1. The remaining ASLF will be created as new avoidance areas: Feature 2 as USACE-244, Feature 3 as USACE-245, Feature 4 as USACE-246, Feature 5 as USACE-247, Feature 6 as USACE-248, and Feature 7 as USACE-249.

In addition to the survey, two newly identified targets (M006 and M010) located in the expanded islands mitigation area were investigated by diver identification due to their association with a marked shipwreck (see Figure 4). M006 was determined not to be cultural significant. M010 consisted of two targets; the first was determined to be modern debris. Cultural material was not identified for the second target within five feet below surface and will not be affected by environmental mitigation measures for this undertaking. As this location is in proximity to previously accumulated spoil piles, the Corps has determined that no additional avoidance is required.

Pursuant to Section 106 of that National Historic Preservation Act (54 U.S.C. § 306108), as amended and its implementing regulations (36 CFR 800), the Corps kindly requests your comments on the following: 1) removal of avoidance for USACE-106 (M005, M006), 2) updating avoidance for USACE-110 to reflect current mapping of Feature 1, and 3) determination of no adverse effect for the undertaking contingent on continued avoidance of USACE-107 (M066, M067) in Cut 1, USACE-243 (M012 and M013) in Cut 3, and establishing new avoidance areas for Features 2 through 7 (USACE-244 through USACE-249). In addition, the Corps requests any comments on the enclosed draft report within 30 days from receipt of this letter. Questions or concerns may be directed to Dr. Zuzana Chovanec, Archeologist at 904-232-2176 or by email at Zuzana.Chovanec@usace.army.mil within 30 days of the date of this letter.

Sincerely,

Christopher Altes

for

Meredith A. Moreno, M.A., RPA
Cultural Resources Chief
Deputy, Environmental Branch

Enclosures

cc:

Mr. Jeremy Fulz, Seminole Nation of Oklahoma, Fultz.J@sno-nsn.gov



**US Army Corps of Engineers
Jacksonville District**



**Anclote River O&M
Dredging, Placement, &
Mitigation**

Submerged Cultural Resources
Assessment Survey and
Diver Investigations

Pinellas County, Florida

Legend

- Federal Channel
- Survey APE

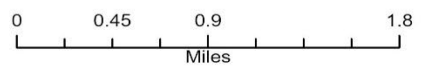


Figure 1: Anclote River Navigation Channel and Cultural Survey APE



**US Army Corps of Engineers
Jacksonville District**



**Anclote River O&M
Dredging, Placement, &
Mitigation**

Submerged Cultural Resources
Assessment Survey and
Diver Investigations

Pinellas County, Florida

Legend

- New Avoidance - ASLF
- Existing Avoidance
- Federal Channel

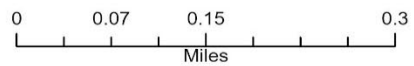


Figure 2: Cut 2A Realignment, Existing Avoidance Areas, New Avoidance Areas

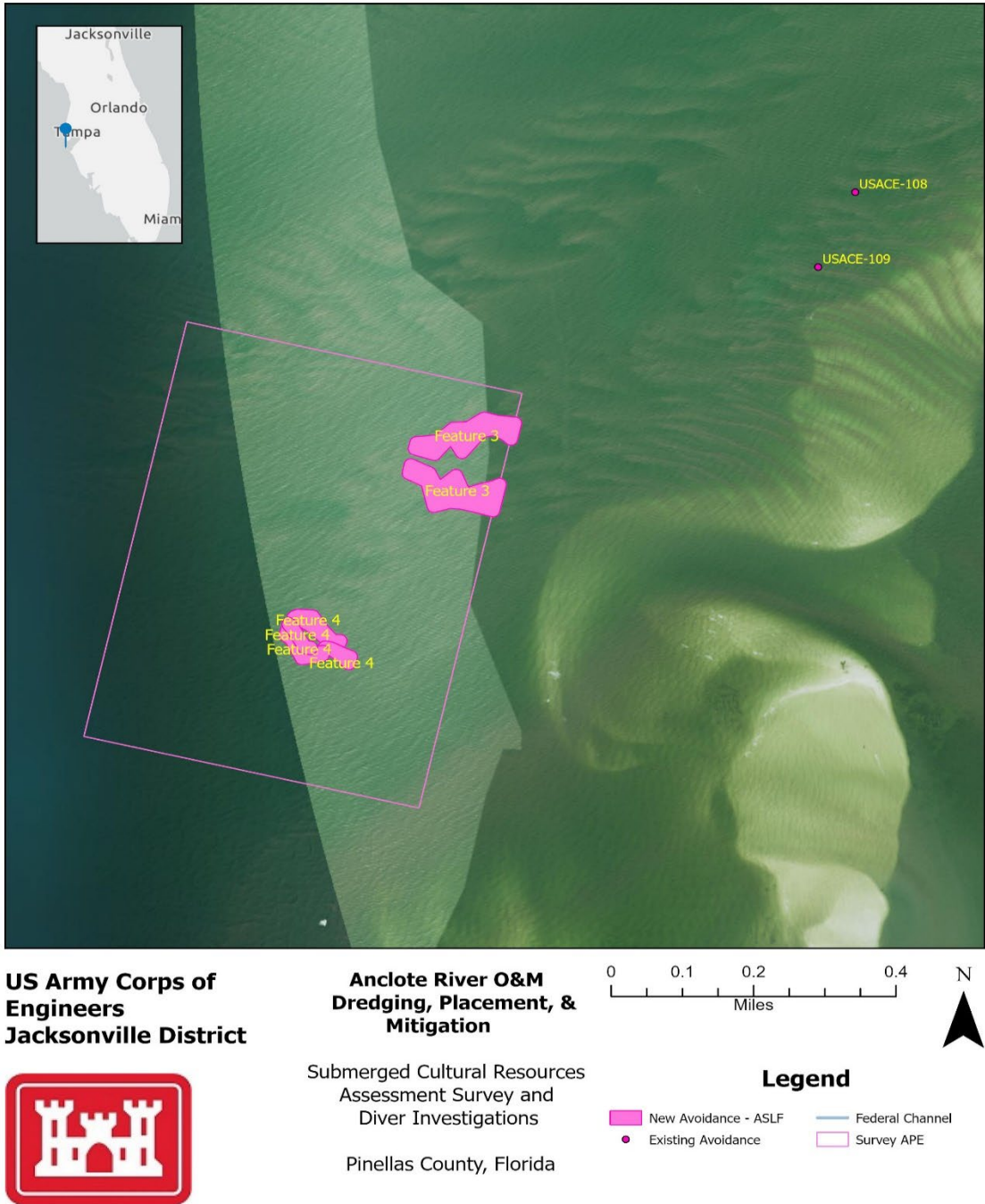
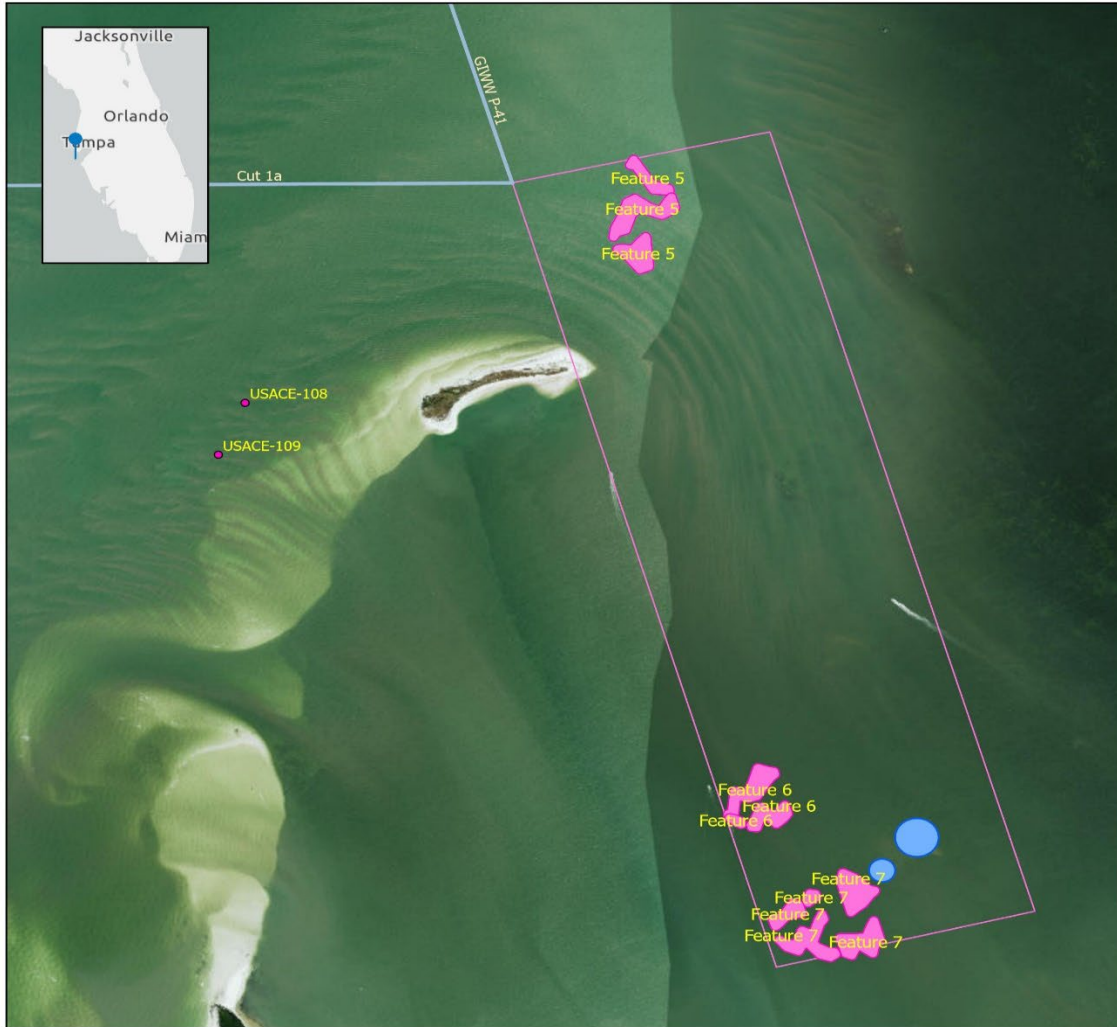


Figure 3: New Avoidances in Three Rooker Island Placement Area



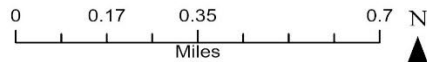
**US Army Corps of Engineers
Jacksonville District**



**Anclote River O&M
Dredging, Placement, &
Mitigation**

Submerged Cultural Resources
Assessment Survey and
Diver Investigations

Pinellas County, Florida



Legend

-  New Avoidance - ASLF
-  Existing Avoidance
-  New Dive Target Locations
-  Federal Channel
-  Survey APE

Figure 4: Diver ID locations and avoidance areas in Expanded Islands Mitigation Area



DEPARTMENT OF THE ARMY
U.S. ARMY CORPS OF ENGINEERS, JACKSONVILLE DISTRICT
701 SAN MARCO BOULEVARD
JACKSONVILLE, FLORIDA 32207

January 21, 2026

Planning and Policy Division
Environmental Branch

Ms. Tina Osceola
Tribal Historic Preservation Officer
Seminole Tribe of Florida
Ah-Tah-Thi-Ki Museum
30290 Josie Billie Hwy, PMB 1004
Clewiston, Florida 33440

Subject: Draft Report Anclote River O&M Dredging, Placement, and Mitigation, Pinellas County, Florida

Dear Ms. Osceola:

The U.S. Army Corps of Engineers, Jacksonville District (Corps) is studying the environmental effects associated with proposed changes to the alignment of the navigation channel of the Anclote River, operations and maintenance dredging, placement of dredged material, and areas of environmental mitigation in Pinellas County, Florida (Figure 1). The navigation channel is proposed to be realigned from a section of the Gulf Intracoastal Waterway (GIWW, Cut P-41) to a section of Cut-2 of the existing Anclote River navigation channel, which may subsequently be dredged (see proposed Cut 2a in Figure 2). The dredged material is proposed to be placed either in an area west of Three Rooker Island, adjacent to Fred Howard Park and Sunset Park, and/or within the navigation channel. Areas for environmental mitigation, as well as pipelines leading to them, are also included in proposed project plans. The area of potential effects (APE) includes the navigation channel from Cut 1 to the turning basin adjacent to Tarpon Springs, in addition to the dredged material placement areas, pipelines, and mitigation areas (see Figure 1).

In 2017, the Corps has previously surveyed and consulted on Operations and Maintenance (O&M) of the Anclote River navigation channel (see Florida Master Site File [FMSF] No. 24837). In a letter dated January 25, 2018, the Florida State Historic Preservation Officer (SHPO) concurred that dredging of the navigational channel would have no effect to historic properties listed in or eligible for listing in the National Register of Historic Places (NRHP) (DHR Project File No. 2018-0003), provided avoidance areas were maintained (USACE-243, Target 1).

In 2019, a combined submerged and terrestrial cultural resources survey was performed (FMSF #26394). The submerged survey covered Cuts 1, 1A, Cut-2, Cut-2A,

a portion of Cut P-41 of the Gulf Intracoastal Waterway (GIWW), and a placement area to the west of Three Rookers Island. The terrestrial survey focused on a potential upload disposal area. Five submerged anomalies (USACE-106 to USACE-110) and one upland eligible archaeological site (8PA10) were identified. In a letter dated August 19, 2019, the Corps agreed to avoid the five submerged anomalies if diver identification investigation was not possible and to avoid the terrestrial site (see DHR Project File No. 2019-2895B).

In 2025, the Corps contracted SEARCH to perform a submerged cultural resources survey of the APE. The survey identified 121 magnetic anomalies and two 16 sonar contacts. One existing avoidance area within the channel realignment area was not relocated (USACE-106) and the second avoidance area (USACE-110) in this location was reidentified as an ancient, submerged landscape feature (ASLF; Feature 1) (see Figure 2 for details). This represents one of seven ASLFs identified within the APE. Two features are located in proximity to Cut-2A (Features 1 and 2), two features are located within the Three Rooker Island placement area (Features 3 and 4), and three located in the expanded islands mitigation area east of the GIWW channel (Features 5, 6, and 7) (see Figures 3 and 4 for locations of remaining ASLFs).

These features will be surrounded by a buffer of 50 feet and avoided by construction activities that may disturb the seafloor, which includes dredging, spudding, or anchoring. Features in the placement area (Features 3 and 4) will not be affected by the placement of dredged material. Features in the mitigation area (Features 5, 6, and 7) will not be affected by planting of seagrass or other environmental mitigation measures.

As the target associated with the USACE-106 avoidance area was not relocated, the Corps has determined that this location no longer requires avoidance. Likewise, as USACE-110 has been remapped and reidentified as a component of ASLF Feature 1, the Corps has determined updating USACE-110 as an avoidance area to represent Feature 1. The remaining ASLF will be created as new avoidance areas: Feature 2 as USACE-244, Feature 3 as USACE-245, Feature 4 as USACE-246, Feature 5 as USACE-247, Feature 6 as USACE-248, and Feature 7 as USACE-249.

In addition to the survey, two newly identified targets (M006 and M010) located in the expanded islands mitigation area were investigated by diver identification due to their association with a marked shipwreck (see Figure 4). M006 was determined not to be cultural significant. M010 consisted of two targets; the first was determined to be modern debris. Cultural material was not identified for the second target within five feet below surface and will not be affected by environmental mitigation measures for this

undertaking. As this location is in proximity to previously accumulated spoil piles, the Corps has determined that no additional avoidance is required.

Pursuant to Section 106 of that National Historic Preservation Act (54 U.S.C. § 306108), as amended and its implementing regulations (36 CFR 800), the Corps kindly requests your comments on the following: 1) removal of avoidance for USACE-106 (M005, M006), 2) updating avoidance for USACE-110 to reflect current mapping of Feature 1, and 3) determination of no adverse effect for the undertaking contingent on continued avoidance of USACE-107 (M066, M067) in Cut 1, USACE-243 (M012 and M013) in Cut 3, and establishing new avoidance areas for Features 2 through 7 (USACE-244 through USACE-249). In addition, the Corps requests any comments on the enclosed draft report within 30 days from receipt of this letter. Questions or concerns may be directed to Dr. Zuzana Chovanec, Archeologist at 904-232-2176 or by email at Zuzana.Chovanec@usace.army.mil within 30 days of the date of this letter.

Sincerely,



for

Meredith A. Moreno, M.A., RPA
Cultural Resources Chief
Deputy, Environmental Branch

Enclosures

cc:

Ms. Tina Osceola, Tribal Historic Preservation Officer, TinaOsceola@semtribe.com
Ms. Danielle Simon, Compliance Manager, DanielleSimon@semtribe.com
Ms. Victoria Menchaca, Compliance Analyst II, VictoriaMenchaca@semtribe.com
Seminole Tribe of Florida, THPO Compliance, THPOCompliance@semtribe.com



**US Army Corps of Engineers
Jacksonville District**



**Anclote River O&M
Dredging, Placement, &
Mitigation**

Submerged Cultural Resources
Assessment Survey and
Diver Investigations

Pinellas County, Florida

Legend

- Federal Channel
- Survey APE

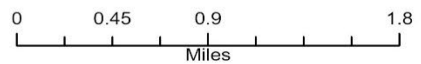


Figure 1: Anclote River Navigation Channel and Cultural Survey APE



**US Army Corps of Engineers
Jacksonville District**






**Anclote River O&M
Dredging, Placement, &
Mitigation**

Submerged Cultural Resources
Assessment Survey and
Diver Investigations

Pinellas County, Florida

Legend

-  New Avoidance - ASLF
-  Existing Avoidance
-  Federal Channel

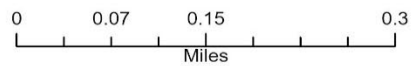


Figure 2: Cut 2A Realignment, Existing Avoidance Areas, New Avoidance Areas

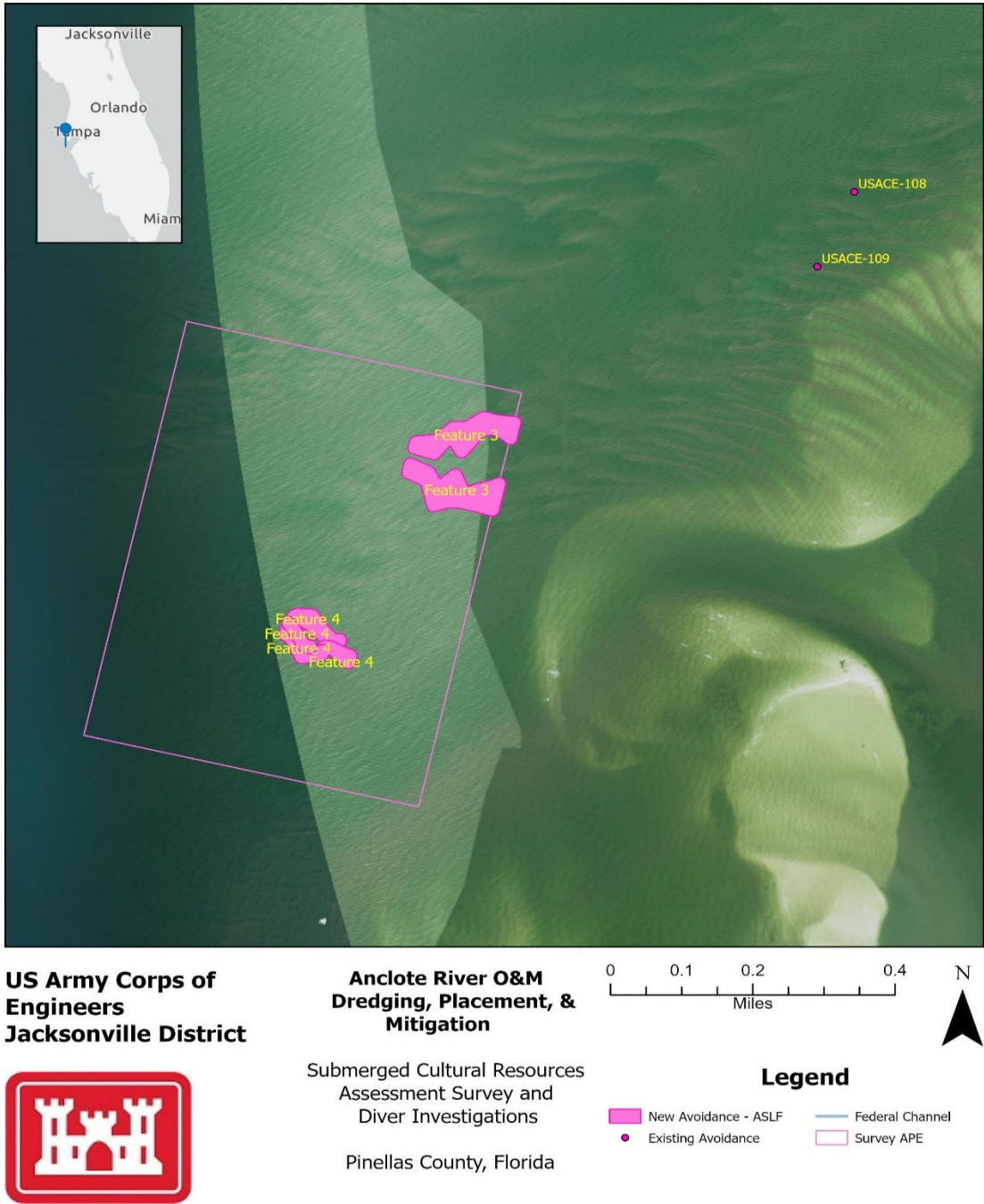
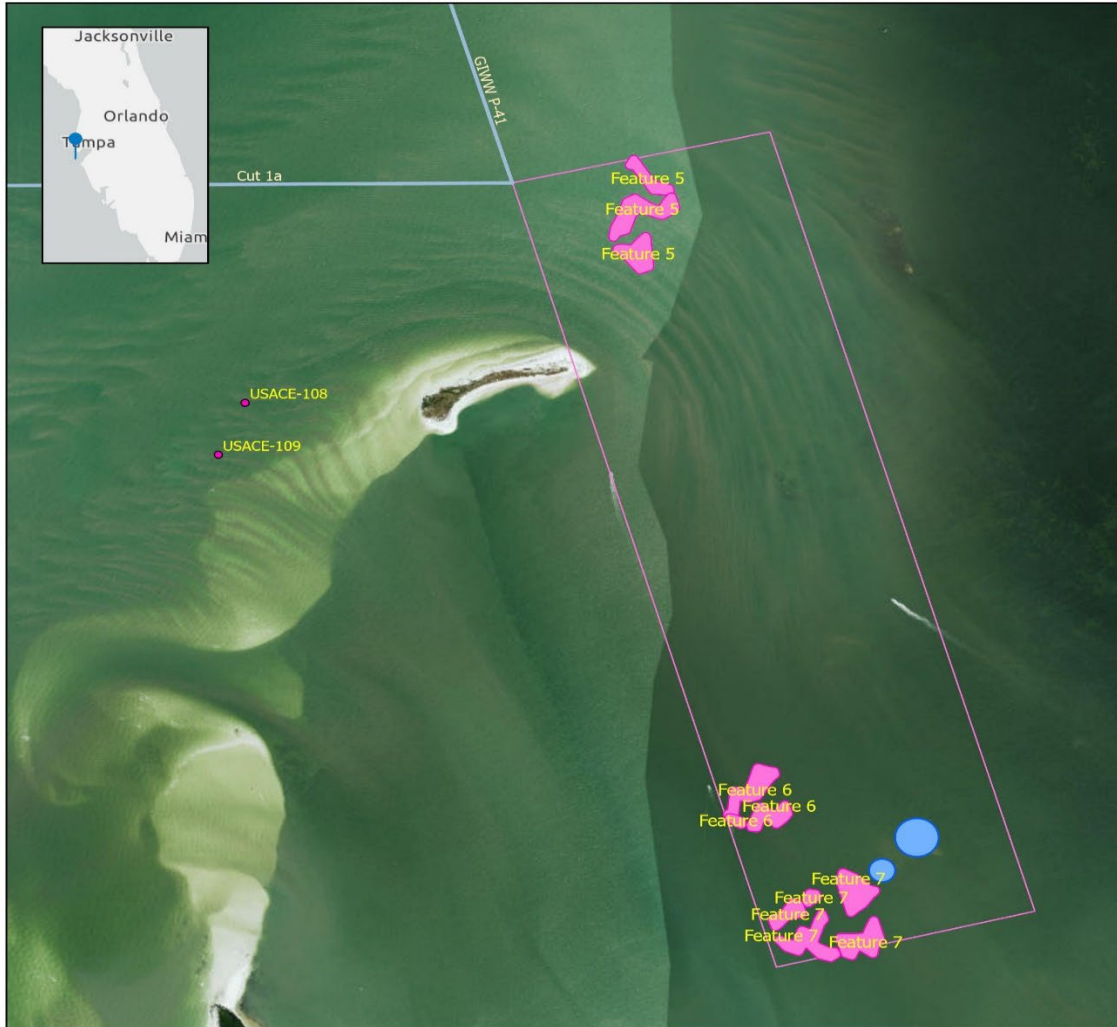


Figure 3: New Avoidances in Three Rooker Island Placement Area



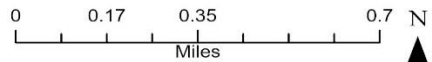
**US Army Corps of Engineers
Jacksonville District**



**Anclote River O&M
Dredging, Placement, &
Mitigation**

Submerged Cultural Resources
Assessment Survey and
Diver Investigations

Pinellas County, Florida



Legend

-  New Avoidance - ASLF
-  Existing Avoidance
-  New Dive Target Locations
-  Federal Channel
-  Survey APE

Figure 4: Diver ID locations and avoidance areas in Expanded Islands Mitigation Area



DEPARTMENT OF THE ARMY
U.S. ARMY CORPS OF ENGINEERS, JACKSONVILLE DISTRICT
701 SAN MARCO BOULEVARD
JACKSONVILLE, FLORIDA 32207

January 21, 2026

Planning and Policy Division
Environmental Branch

Mr. David Frank
Tribal Historic Preservation Officer
Thlopthlocco Tribal Town
P.O. Box 188
Okemah, Oklahoma 74447

Subject: Draft Report Anclote River O&M Dredging, Placement, and Mitigation, Pinellas County, Florida

Dear Mr. Frank:

The U.S. Army Corps of Engineers, Jacksonville District (Corps) is studying the environmental effects associated with proposed changes to the alignment of the navigation channel of the Anclote River, operations and maintenance dredging, placement of dredged material, and areas of environmental mitigation in Pinellas County, Florida (Figure 1). The navigation channel is proposed to be realigned from a section of the Gulf Intracoastal Waterway (GIWW, Cut P-41) to a section of Cut-2 of the existing Anclote River navigation channel, which may subsequently be dredged (see proposed Cut 2a in Figure 2). The dredged material is proposed to be placed either in an area west of Three Rooker Island, adjacent to Fred Howard Park and Sunset Park, and/or within the navigation channel. Areas for environmental mitigation, as well as pipelines leading to them, are also included in proposed project plans. The area of potential effects (APE) includes the navigation channel from Cut 1 to the turning basin adjacent to Tarpon Springs, in addition to the dredged material placement areas, pipelines, and mitigation areas (see Figure 1).

In 2017, the Corps has previously surveyed and consulted on Operations and Maintenance (O&M) of the Anclote River navigation channel (see Florida Master Site File [FMSF] No. 24837). In a letter dated January 25, 2018, the Florida State Historic Preservation Officer (SHPO) concurred that dredging of the navigational channel would have no effect to historic properties listed in or eligible for listing in the National Register of Historic Places (NRHP) (DHR Project File No. 2018-0003), provided avoidance areas were maintained (USACE-243, Target 1).

In 2019, a combined submerged and terrestrial cultural resources survey was performed (FMSF #26394). The submerged survey covered Cuts 1, 1A, Cut-2, Cut-2A, a portion of Cut P-41 of the Gulf Intracoastal Waterway (GIWW), and a placement area

to the west of Three Rookers Island. The terrestrial survey focused on a potential upload disposal area. Five submerged anomalies (USACE-106 to USACE-110) and one upland eligible archaeological site (8PA10) were identified. In a letter dated August 19, 2019, the Corps agreed to avoid the five submerged anomalies if diver identification investigation was not possible and to avoid the terrestrial site (see DHR Project File No. 2019-2895B).

In 2025, the Corps contracted SEARCH to perform a submerged cultural resources survey of the APE. The survey identified 121 magnetic anomalies and two 16 sonar contacts. One existing avoidance area within the channel realignment area was not relocated (USACE-106) and the second avoidance area (USACE-110) in this location was reidentified as an ancient, submerged landscape feature (ASLF; Feature 1) (see Figure 2 for details). This represents one of seven ASLFs identified within the APE. Two features are located in proximity to Cut-2A (Features 1 and 2), two features are located within the Three Rooker Island placement area (Features 3 and 4), and three located in the expanded islands mitigation area east of the GIWW channel (Features 5, 6, and 7) (see Figures 3 and 4 for locations of remaining ASLFs).

These features will be surrounded by a buffer of 50 feet and avoided by construction activities that may disturb the seafloor, which includes dredging, spudding, or anchoring. Features in the placement area (Features 3 and 4) will not be affected by the placement of dredged material. Features in the mitigation area (Features 5, 6, and 7) will not be affected by planting of seagrass or other environmental mitigation measures.

As the target associated with the USACE-106 avoidance area was not relocated, the Corps has determined that this location no longer requires avoidance. Likewise, as USACE-110 has been remapped and reidentified as a component of ASLF Feature 1, the Corps has determined updating USACE-110 as an avoidance area to represent Feature 1. The remaining ASLF will be created as new avoidance areas: Feature 2 as USACE-244, Feature 3 as USACE-245, Feature 4 as USACE-246, Feature 5 as USACE-247, Feature 6 as USACE-248, and Feature 7 as USACE-249.

In addition to the survey, two newly identified targets (M006 and M010) located in the expanded islands mitigation area were investigated by diver identification due to their association with a marked shipwreck (see Figure 4). M006 was determined not to be cultural significant. M010 consisted of two targets; the first was determined to be modern debris. Cultural material was not identified for the second target within five feet below surface and will not be affected by environmental mitigation measures for this

undertaking. As this location is in proximity to previously accumulated spoil piles, the Corps has determined that no additional avoidance is required.

Pursuant to Section 106 of that National Historic Preservation Act (54 U.S.C. § 306108), as amended and its implementing regulations (36 CFR 800), the Corps kindly requests your comments on the following: 1) removal of avoidance for USACE-106 (M005, M006), 2) updating avoidance for USACE-110 to reflect current mapping of Feature 1, and 3) determination of no adverse effect for the undertaking contingent on continued avoidance of USACE-107 (M066, M067) in Cut 1, USACE-243 (M012 and M013) in Cut 3, and establishing new avoidance areas for Features 2 through 7 (USACE-244 through USACE-249). In addition, the Corps requests any comments on the enclosed draft report within 30 days from receipt of this letter. Questions or concerns may be directed to Dr. Zuzana Chovanec, Archeologist at 904-232-2176 or by email at Zuzana.Chovanec@usace.army.mil within 30 days of the date of this letter.

Sincerely,



for

Meredith A. Moreno, M.A., RPA
Cultural Resources Chief
Deputy, Environmental Branch

Enclosures

cc:

Mr. David Frank, Tribal Historic Preservation Officer, thpo@ttown.org



**US Army Corps of
Engineers
Jacksonville District**



**Anclote River O&M
Dredging, Placement, &
Mitigation**

Submerged Cultural Resources
Assessment Survey and
Diver Investigations

Pinellas County, Florida

Legend

- Federal Channel
- Survey APE

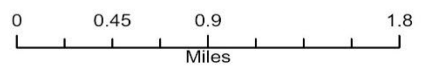


Figure 1: Anclote River Navigation Channel and Cultural Survey APE



**US Army Corps of Engineers
Jacksonville District**






**Anclote River O&M
Dredging, Placement, &
Mitigation**

Submerged Cultural Resources
Assessment Survey and
Diver Investigations

Pinellas County, Florida

Legend

-  New Avoidance - ASLF
-  Existing Avoidance
-  Federal Channel

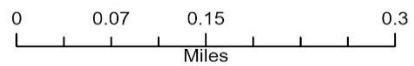


Figure 2: Cut 2A Realignment, Existing Avoidance Areas, New Avoidance Areas

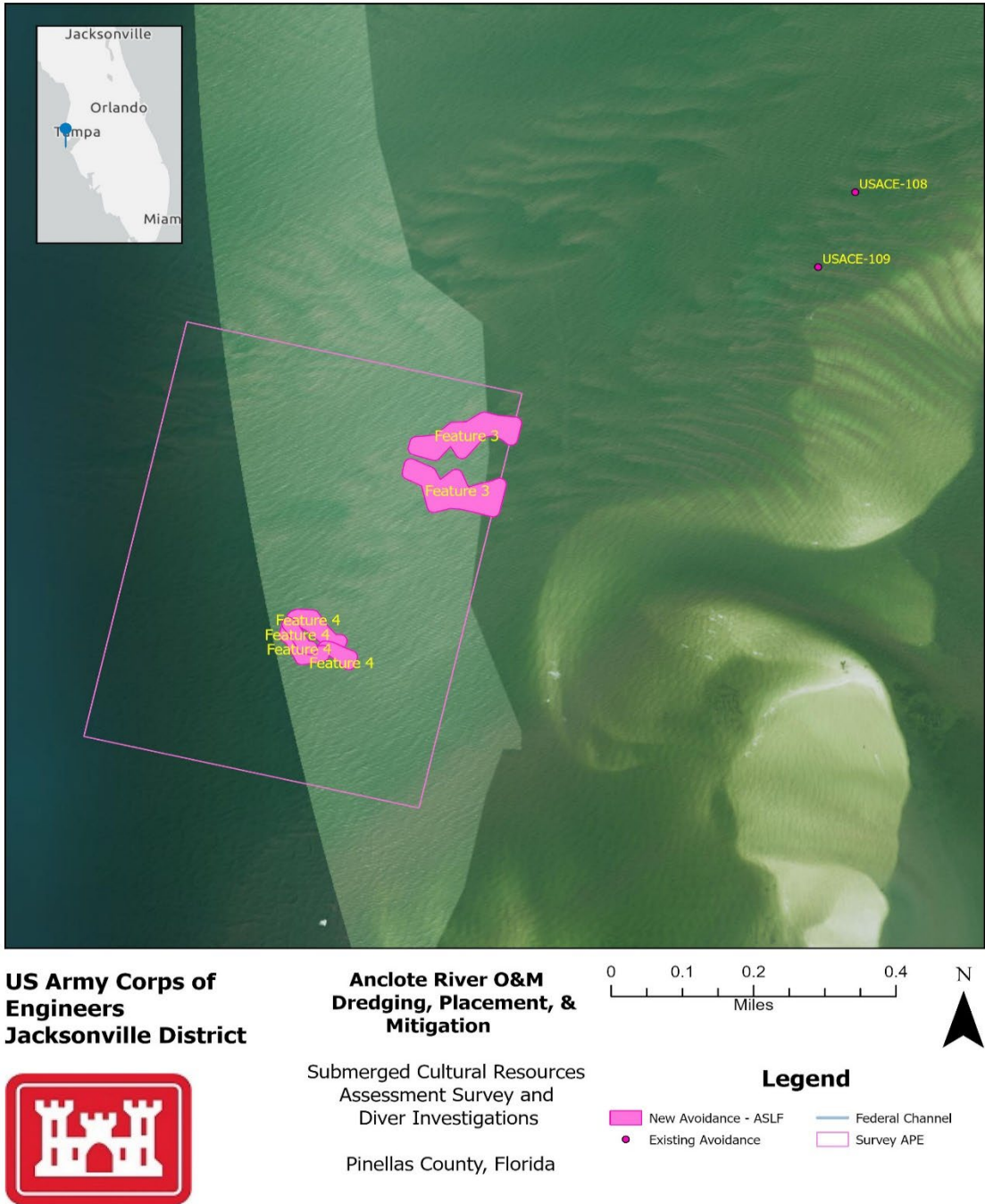
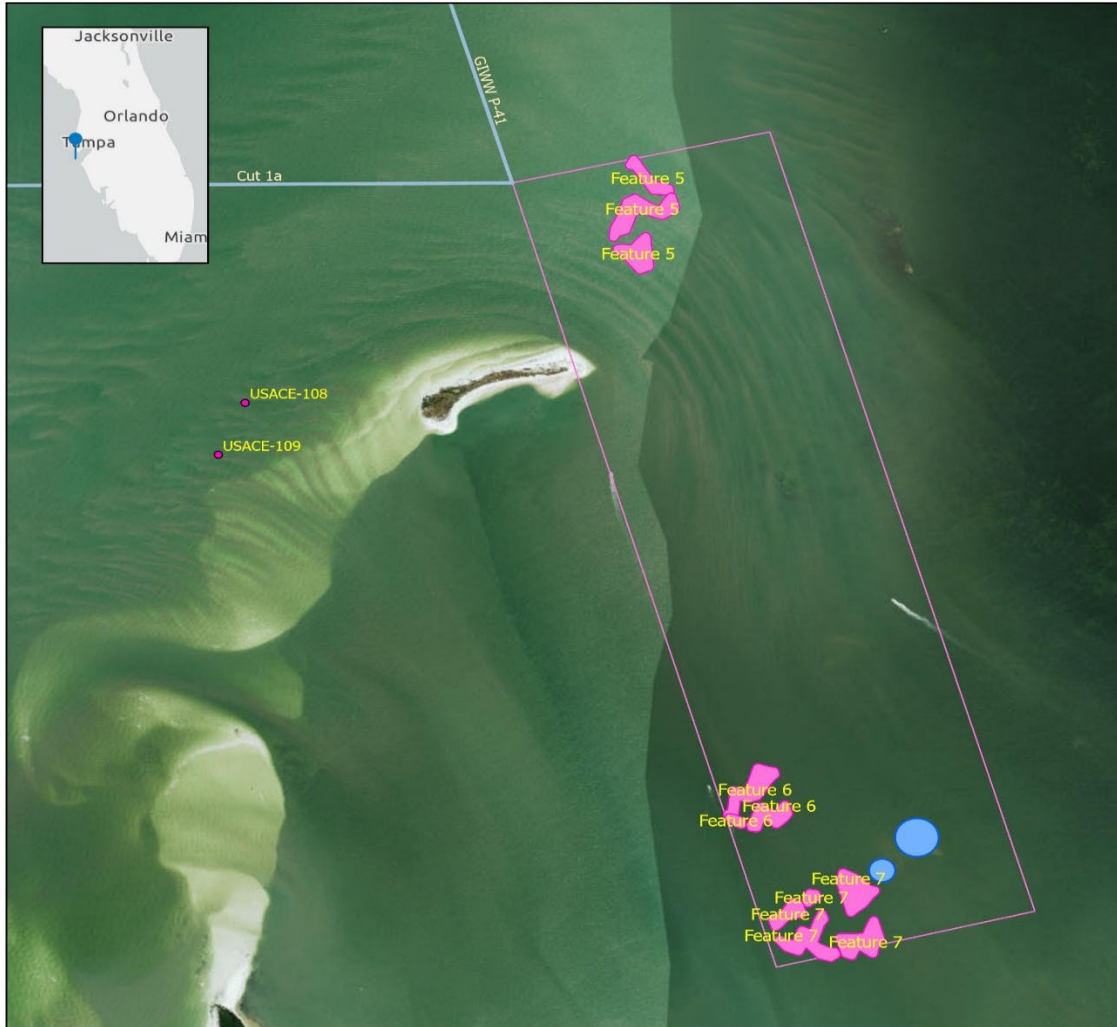


Figure 3: New Avoidances in Three Rooker Island Placement Area



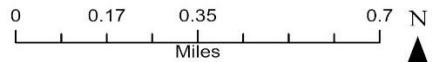
**US Army Corps of Engineers
Jacksonville District**



**Anclote River O&M
Dredging, Placement, &
Mitigation**

Submerged Cultural Resources
Assessment Survey and
Diver Investigations

Pinellas County, Florida



Legend

- New Avoidance - ASLF
- Existing Avoidance
- New Dive Target Locations
- Federal Channel
- Survey APE

Figure 4: Diver ID locations and avoidance areas in Expanded Islands Mitigation Area