

APPROVED JURISDICTIONAL DETERMINATION FORM
U.S. Army Corps of Engineers

This form should be completed by following the instructions provided in Section IV of the JD Form Instructional Guidebook.

SECTION I: BACKGROUND INFORMATION

A. REPORT COMPLETION DATE FOR APPROVED JURISDICTIONAL DETERMINATION (JD): 5/10/2017

B. DISTRICT OFFICE, FILE NAME, AND NUMBER: Jacksonville District; Ray Lane Properties; SAJ-2016-03253

C. PROJECT LOCATION AND BACKGROUND INFORMATION: The project is located at 1321 Pickettville Road, in Section 12, Township 2 South, Range 25 East.

State: FL County/parish/borough: Duval City: Jacksonville
Center coordinates of site (lat/long in degree decimal format): Lat. 30.339753° **Pick List**, Long. -81.763559° **Pick List**.
Universal Transverse Mercator:
Name of nearest waterbody: Cedar River

Name of nearest Traditional Navigable Water (TNW) into which the aquatic resource flows: Ortega River
Name of watershed or Hydrologic Unit Code (HUC): Lower St. Johns River Subbasin (HUC-030801031403), Ortega River-St. Johns River watershed (HUC-0308010315), and Cedar River subwatershed (HUC-030801031403)

- Check if map/diagram of review area and/or potential jurisdictional areas is/are available upon request.
 Check if other sites (e.g., offsite mitigation sites, disposal sites, etc...) are associated with this action and are recorded on a different JD form.

D. REVIEW PERFORMED FOR SITE EVALUATION (CHECK ALL THAT APPLY):

- Office (Desk) Determination. Date: 5/10/2017
 Field Determination. Date(s):

SECTION II: SUMMARY OF FINDINGS

A. RHA SECTION 10 DETERMINATION OF JURISDICTION.

There **Are no** "navigable waters of the U.S." within Rivers and Harbors Act (RHA) jurisdiction (as defined by 33 CFR part 329) in the review area. [Required]

- Waters subject to the ebb and flow of the tide.
 Waters are presently used, or have been used in the past, or may be susceptible for use to transport interstate or foreign commerce.
Explain: .

B. CWA SECTION 404 DETERMINATION OF JURISDICTION.

There **Are no** "waters of the U.S." within Clean Water Act (CWA) jurisdiction (as defined by 33 CFR part 328) in the review area. [Required]

1. Waters of the U.S.

a. Indicate presence of waters of U.S. in review area (check all that apply):¹

- TNWs, including territorial seas
 Wetlands adjacent to TNWs
 Relatively permanent waters² (RPWs) that flow directly or indirectly into TNWs
 Non-RPWs that flow directly or indirectly into TNWs
 Wetlands directly abutting RPWs that flow directly or indirectly into TNWs
 Wetlands adjacent to but not directly abutting RPWs that flow directly or indirectly into TNWs
 Wetlands adjacent to non-RPWs that flow directly or indirectly into TNWs
 Impoundments of jurisdictional waters
 Isolated (interstate or intrastate) waters, including isolated wetlands

b. Identify (estimate) size of waters of the U.S. in the review area:

Non-wetland waters: linear feet: width (ft) and/or acres.
Wetlands: acres.

c. Limits (boundaries) of jurisdiction based on: **Pick List**

Elevation of established OHWM (if known): .

2. Non-regulated waters/wetlands (check if applicable):³

- Potentially jurisdictional waters and/or wetlands were assessed within the review area and determined to be not jurisdictional.
Explain: **The review area is located at 1321 Pickettville Road and is approximately 4.45 acres in size. The review area is surrounded by commercial development and Pickettville Road. The subject wetland is a depressionnal, forested, freshwater wetland, approximately 0.23 acre in size. The subject wetland is not hydrologically connected to other**

¹ Boxes checked below shall be supported by completing the appropriate sections in Section III below.

² For purposes of this form, an RPW is defined as a tributary that is not a TNW and that typically flows year-round or has continuous flow at least "seasonally" (e.g., typically 3 months).

³ Supporting documentation is presented in Section III.F.

waters/wetlands, as there are no culverts and/or ditches that convey surface water. The subject wetland within the review area is not abutting or adjacent to any non-relatively permanent waters, relatively permanent waters, or traditionally navigable waters. The wetland review area has no substantial nexus to interstate or foreign commerce.

SECTION III: CWA ANALYSIS

A. TNWs AND WETLANDS ADJACENT TO TNWs

The agencies will assert jurisdiction over TNWs and wetlands adjacent to TNWs. If the aquatic resource is a TNW, complete Section III.A.1 and Section III.D.1. only; if the aquatic resource is a wetland adjacent to a TNW, complete Sections III.A.1 and 2 and Section III.D.1.; otherwise, see Section III.B below.

1. TNW

Identify TNW: _____

Summarize rationale supporting determination: _____

2. Wetland adjacent to TNW

Summarize rationale supporting conclusion that wetland is “adjacent”: _____

B. CHARACTERISTICS OF TRIBUTARY (THAT IS NOT A TNW) AND ITS ADJACENT WETLANDS (IF ANY):

This section summarizes information regarding characteristics of the tributary and its adjacent wetlands, if any, and it helps determine whether or not the standards for jurisdiction established under *Rapanos* have been met.

The agencies will assert jurisdiction over non-navigable tributaries of TNWs where the tributaries are “relatively permanent waters” (RPWs), i.e. tributaries that typically flow year-round or have continuous flow at least seasonally (e.g., typically 3 months). A wetland that directly abuts an RPW is also jurisdictional. If the aquatic resource is not a TNW, but has year-round (perennial) flow, skip to Section III.D.2. If the aquatic resource is a wetland directly abutting a tributary with perennial flow, skip to Section III.D.4.

A wetland that is adjacent to but that does not directly abut an RPW requires a significant nexus evaluation. Corps districts and EPA regions will include in the record any available information that documents the existence of a significant nexus between a relatively permanent tributary that is not perennial (and its adjacent wetlands if any) and a traditional navigable water, even though a significant nexus finding is not required as a matter of law.

If the waterbody⁴ is not an RPW, or a wetland directly abutting an RPW, a JD will require additional data to determine if the waterbody has a significant nexus with a TNW. If the tributary has adjacent wetlands, the significant nexus evaluation must consider the tributary in combination with all of its adjacent wetlands. This significant nexus evaluation that combines, for analytical purposes, the tributary and all of its adjacent wetlands is used whether the review area identified in the JD request is the tributary, or its adjacent wetlands, or both. If the JD covers a tributary with adjacent wetlands, complete Section III.B.1 for the tributary, Section III.B.2 for any onsite wetlands, and Section III.B.3 for all wetlands adjacent to that tributary, both onsite and offsite. The determination whether a significant nexus exists is determined in Section III.C below.

1. Characteristics of non-TNWs that flow directly or indirectly into TNW

(i) General Area Conditions:

Watershed size: **Pick List**

Drainage area: **Pick List**

Average annual rainfall: _____ inches

Average annual snowfall: _____ inches

(ii) Physical Characteristics:

(a) Relationship with TNW:

Tributary flows directly into TNW.

Tributary flows through **Pick List** tributaries before entering TNW.

Project waters are **Pick List** river miles from TNW.

Project waters are **Pick List** river miles from RPW.

Project waters are **Pick List** aerial (straight) miles from TNW.

Project waters are **Pick List** aerial (straight) miles from RPW.

Project waters cross or serve as state boundaries. Explain: _____

⁴ Note that the Instructional Guidebook contains additional information regarding swales, ditches, washes, and erosional features generally and in the arid West.

Identify flow route to TNW⁵:
Tributary stream order, if known:

(b) **General Tributary Characteristics (check all that apply):**

Tributary is: Natural
 Artificial (man-made). Explain:
 Manipulated (man-altered). Explain:

Tributary properties with respect to top of bank (estimate):

Average width: feet
Average depth: feet
Average side slopes: **Pick List**.

Primary tributary substrate composition (check all that apply):

Silts Sands Concrete
 Cobbles Gravel Muck
 Bedrock Vegetation. Type/% cover:
 Other. Explain:

Tributary condition/stability [e.g., highly eroding, sloughing banks]. Explain:

Presence of run/riffle/pool complexes. Explain:

Tributary geometry: Pick List

Tributary gradient (approximate average slope): %

(c) **Flow:**

Tributary provides for: Pick List

Estimate average number of flow events in review area/year: Pick List

Describe flow regime:

Other information on duration and volume:

Surface flow is: **Pick List**. Characteristics:

Subsurface flow: **Pick List**. Explain findings:

Dye (or other) test performed:

Tributary has (check all that apply):

Bed and banks
 OHWM⁶ (check all indicators that apply):
 clear, natural line impressed on the bank the presence of litter and debris
 changes in the character of soil destruction of terrestrial vegetation
 shelving the presence of wrack line
 vegetation matted down, bent, or absent sediment sorting
 leaf litter disturbed or washed away scour
 sediment deposition multiple observed or predicted flow events
 water staining abrupt change in plant community
 other (list):
 Discontinuous OHWM.⁷ Explain:

If factors other than the OHWM were used to determine lateral extent of CWA jurisdiction (check all that apply):

High Tide Line indicated by: Mean High Water Mark indicated by:
 oil or scum line along shore objects survey to available datum;
 fine shell or debris deposits (foreshore) physical markings;
 physical markings/characteristics vegetation lines/changes in vegetation types.
 tidal gauges
 other (list):

(iii) **Chemical Characteristics:**

Characterize tributary (e.g., water color is clear, discolored, oily film; water quality; general watershed characteristics, etc.).

Explain:

⁵ Flow route can be described by identifying, e.g., tributary a, which flows through the review area, to flow into tributary b, which then flows into TNW.

⁶A natural or man-made discontinuity in the OHWM does not necessarily sever jurisdiction (e.g., where the stream temporarily flows underground, or where the OHWM has been removed by development or agricultural practices). Where there is a break in the OHWM that is unrelated to the waterbody's flow regime (e.g., flow over a rock outcrop or through a culvert), the agencies will look for indicators of flow above and below the break.

⁷Ibid.

Identify specific pollutants, if known: .

(iv) **Biological Characteristics. Channel supports (check all that apply):**

- Riparian corridor. Characteristics (type, average width):
- Wetland fringe. Characteristics:
- Habitat for:
 - Federally Listed species. Explain findings:
 - Fish/spawn areas. Explain findings:
 - Other environmentally-sensitive species. Explain findings:
 - Aquatic/wildlife diversity. Explain findings:

2. **Characteristics of wetlands adjacent to non-TNW that flow directly or indirectly into TNW**

(i) **Physical Characteristics:**

(a) General Wetland Characteristics:

Properties:

Wetland size: acres

Wetland type. Explain:

Wetland quality. Explain:

Project wetlands cross or serve as state boundaries. Explain:

(b) General Flow Relationship with Non-TNW:

Flow is: **Pick List**. Explain:

Surface flow is: **Pick List**

Characteristics:

Subsurface flow: **Pick List**. Explain findings:

Dye (or other) test performed:

(c) Wetland Adjacency Determination with Non-TNW:

Directly abutting

Not directly abutting

Discrete wetland hydrologic connection. Explain:

Ecological connection. Explain:

Separated by berm/barrier. Explain:

(d) Proximity (Relationship) to TNW

Project wetlands are **Pick List** river miles from TNW.

Project waters are **Pick List** aerial (straight) miles from TNW.

Flow is from: **Pick List**.

Estimate approximate location of wetland as within the **Pick List** floodplain.

(ii) **Chemical Characteristics:**

Characterize wetland system (e.g., water color is clear, brown, oil film on surface; water quality; general watershed characteristics; etc.). Explain:

Identify specific pollutants, if known:

(iii) **Biological Characteristics. Wetland supports (check all that apply):**

- Riparian buffer. Characteristics (type, average width):
- Vegetation type/percent cover. Explain:
- Habitat for:
 - Federally Listed species. Explain findings:
 - Fish/spawn areas. Explain findings:
 - Other environmentally-sensitive species. Explain findings:
 - Aquatic/wildlife diversity. Explain findings:

3. **Characteristics of all wetlands adjacent to the tributary (if any)**

All wetland(s) being considered in the cumulative analysis: **Pick List**

Approximately () acres in total are being considered in the cumulative analysis.

For each wetland, specify the following:

Directly abuts? (Y/N) Size (in acres) Directly abuts? (Y/N) Size (in acres)

Summarize overall biological, chemical and physical functions being performed: .

C. SIGNIFICANT NEXUS DETERMINATION

A significant nexus analysis will assess the flow characteristics and functions of the tributary itself and the functions performed by any wetlands adjacent to the tributary to determine if they significantly affect the chemical, physical, and biological integrity of a TNW. For each of the following situations, a significant nexus exists if the tributary, in combination with all of its adjacent wetlands, has more than a speculative or insubstantial effect on the chemical, physical and/or biological integrity of a TNW. Considerations when evaluating significant nexus include, but are not limited to the volume, duration, and frequency of the flow of water in the tributary and its proximity to a TNW, and the functions performed by the tributary and all its adjacent wetlands. It is not appropriate to determine significant nexus based solely on any specific threshold of distance (e.g. between a tributary and its adjacent wetland or between a tributary and the TNW). Similarly, the fact an adjacent wetland lies within or outside of a floodplain is not solely determinative of significant nexus.

Draw connections between the features documented and the effects on the TNW, as identified in the *Rapanos* Guidance and discussed in the Instructional Guidebook. Factors to consider include, for example:

- Does the tributary, in combination with its adjacent wetlands (if any), have the capacity to carry pollutants or flood waters to TNWs, or to reduce the amount of pollutants or flood waters reaching a TNW?
- Does the tributary, in combination with its adjacent wetlands (if any), provide habitat and lifecycle support functions for fish and other species, such as feeding, nesting, spawning, or rearing young for species that are present in the TNW?
- Does the tributary, in combination with its adjacent wetlands (if any), have the capacity to transfer nutrients and organic carbon that support downstream foodwebs?
- Does the tributary, in combination with its adjacent wetlands (if any), have other relationships to the physical, chemical, or biological integrity of the TNW?

Note: the above list of considerations is not inclusive and other functions observed or known to occur should be documented below:

1. **Significant nexus findings for non-RPW that has no adjacent wetlands and flows directly or indirectly into TNWs.** Explain findings of presence or absence of significant nexus below, based on the tributary itself, then go to Section III.D: .
2. **Significant nexus findings for non-RPW and its adjacent wetlands, where the non-RPW flows directly or indirectly into TNWs.** Explain findings of presence or absence of significant nexus below, based on the tributary in combination with all of its adjacent wetlands, then go to Section III.D: .
3. **Significant nexus findings for wetlands adjacent to an RPW but that do not directly abut the RPW.** Explain findings of presence or absence of significant nexus below, based on the tributary in combination with all of its adjacent wetlands, then go to Section III.D: .

D. DETERMINATIONS OF JURISDICTIONAL FINDINGS. THE SUBJECT WATERS/WETLANDS ARE (CHECK ALL THAT APPLY):

1. **TNWs and Adjacent Wetlands.** Check all that apply and provide size estimates in review area:

- TNWs: linear feet width (ft), Or, acres.
 Wetlands adjacent to TNWs: acres.

2. **RPWs that flow directly or indirectly into TNWs.**

- Tributaries of TNWs where tributaries typically flow year-round are jurisdictional. Provide data and rationale indicating that tributary is perennial: .
- Tributaries of TNW where tributaries have continuous flow “seasonally” (e.g., typically three months each year) are jurisdictional. Data supporting this conclusion is provided at Section III.B. Provide rationale indicating that tributary flows seasonally: .

Provide estimates for jurisdictional waters in the review area (check all that apply):

- Tributary waters: linear feet width (ft).
 Other non-wetland waters: acres.
Identify type(s) of waters: .

3. Non-RPWs⁸ that flow directly or indirectly into TNWs.

- Waterbody that is not a TNW or an RPW, but flows directly or indirectly into a TNW, and it has a significant nexus with a TNW is jurisdictional. Data supporting this conclusion is provided at Section III.C.

Provide estimates for jurisdictional waters within the review area (check all that apply):

- Tributary waters: linear feet width (ft).
 Other non-wetland waters: acres.
Identify type(s) of waters: .

4. Wetlands directly abutting an RPW that flow directly or indirectly into TNWs.

- Wetlands directly abut RPW and thus are jurisdictional as adjacent wetlands.
 Wetlands directly abutting an RPW where tributaries typically flow year-round. Provide data and rationale indicating that tributary is perennial in Section III.D.2, above. Provide rationale indicating that wetland is directly abutting an RPW: .
 Wetlands directly abutting an RPW where tributaries typically flow "seasonally." Provide data indicating that tributary is seasonal in Section III.B and rationale in Section III.D.2, above. Provide rationale indicating that wetland is directly abutting an RPW: .

Provide acreage estimates for jurisdictional wetlands in the review area: acres.

5. Wetlands adjacent to but not directly abutting an RPW that flow directly or indirectly into TNWs.

- Wetlands that do not directly abut an RPW, but when considered in combination with the tributary to which they are adjacent and with similarly situated adjacent wetlands, have a significant nexus with a TNW are jurisdictional. Data supporting this conclusion is provided at Section III.C.

Provide acreage estimates for jurisdictional wetlands in the review area: acres.

6. Wetlands adjacent to non-RPWs that flow directly or indirectly into TNWs.

- Wetlands adjacent to such waters, and have when considered in combination with the tributary to which they are adjacent and with similarly situated adjacent wetlands, have a significant nexus with a TNW are jurisdictional. Data supporting this conclusion is provided at Section III.C.

Provide estimates for jurisdictional wetlands in the review area: acres.

7. Impoundments of jurisdictional waters.⁹

As a general rule, the impoundment of a jurisdictional tributary remains jurisdictional.

- Demonstrate that impoundment was created from "waters of the U.S.," or
 Demonstrate that water meets the criteria for one of the categories presented above (1-6), or
 Demonstrate that water is isolated with a nexus to commerce (see E below).

E. ISOLATED [INTERSTATE OR INTRA-STATE] WATERS, INCLUDING ISOLATED WETLANDS, THE USE, DEGRADATION OR DESTRUCTION OF WHICH COULD AFFECT INTERSTATE COMMERCE, INCLUDING ANY SUCH WATERS (CHECK ALL THAT APPLY):¹⁰

- which are or could be used by interstate or foreign travelers for recreational or other purposes.
 from which fish or shellfish are or could be taken and sold in interstate or foreign commerce.
 which are or could be used for industrial purposes by industries in interstate commerce.
 Interstate isolated waters. Explain: .
 Other factors. Explain: .

Identify water body and summarize rationale supporting determination: .

⁸See Footnote # 3.

⁹To complete the analysis refer to the key in Section III.D.6 of the Instructional Guidebook.

¹⁰Prior to asserting or declining CWA jurisdiction based solely on this category, Corps Districts will elevate the action to Corps and EPA HQ for review consistent with the process described in the Corps/EPA Memorandum Regarding CWA Act Jurisdiction Following Rapanos.

Provide estimates for jurisdictional waters in the review area (check all that apply):

- Tributary waters: linear feet width (ft).
- Other non-wetland waters: acres.
 Identify type(s) of waters: .
- Wetlands: acres.

F. NON-JURISDICTIONAL WATERS, INCLUDING WETLANDS (CHECK ALL THAT APPLY):

- If potential wetlands were assessed within the review area, these areas did not meet the criteria in the 1987 Corps of Engineers Wetland Delineation Manual and/or appropriate Regional Supplements.
- Review area included isolated waters with no substantial nexus to interstate (or foreign) commerce.
 - Prior to the Jan 2001 Supreme Court decision in "SWANCC," the review area would have been regulated based solely on the "Migratory Bird Rule" (MBR).
- Waters do not meet the "Significant Nexus" standard, where such a finding is required for jurisdiction. Explain: .
- Other: (explain, if not covered above): .

Provide acreage estimates for non-jurisdictional waters in the review area, where the sole potential basis of jurisdiction is the MBR factors (i.e., presence of migratory birds, presence of endangered species, use of water for irrigated agriculture), using best professional judgment (check all that apply):

- Non-wetland waters (i.e., rivers, streams): linear feet width (ft).
- Lakes/ponds: acres.
- Other non-wetland waters: acres. List type of aquatic resource: .
- Wetlands: 0.23 acres.

Provide acreage estimates for non-jurisdictional waters in the review area that do not meet the "Significant Nexus" standard, where such a finding is required for jurisdiction (check all that apply):

- Non-wetland waters (i.e., rivers, streams): linear feet, width (ft).
- Lakes/ponds: acres.
- Other non-wetland waters: acres. List type of aquatic resource: .
- Wetlands: acres.

SECTION IV: DATA SOURCES.

A. SUPPORTING DATA. Data reviewed for JD (check all that apply - checked items shall be included in case file and, where checked and requested, appropriately reference sources below):

- Maps, plans, plots or plat submitted by or on behalf of the applicant/consultant: .
- Data sheets prepared/submitted by or on behalf of the applicant/consultant.
 - Office concurs with data sheets/delineation report.
 - Office does not concur with data sheets/delineation report.
- Data sheets prepared by the Corps: .
- Corps navigable waters' study: .
- U.S. Geological Survey Hydrologic Atlas: .
 - USGS NHD data.
 - USGS 8 and 12 digit HUC maps.
- U.S. Geological Survey map(s). Cite scale & quad name: .
- USDA Natural Resources Conservation Service Soil Survey. Citation: Web Soil Survey.
- National wetlands inventory map(s). Cite name: .
- State/Local wetland inventory map(s): .
- FEMA/FIRM maps: .
- 100-year Floodplain Elevation is: (National Geodetic Vertical Datum of 1929)
- Photographs: Aerial (Name & Date): Google Earth 5/10/2017.
 or Other (Name & Date): .
- Previous determination(s). File no. and date of response letter: .
- Applicable/supporting case law: .
- Applicable/supporting scientific literature: .
- Other information (please specify): .

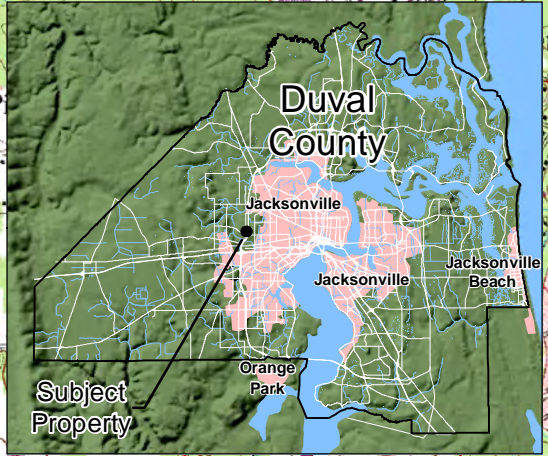
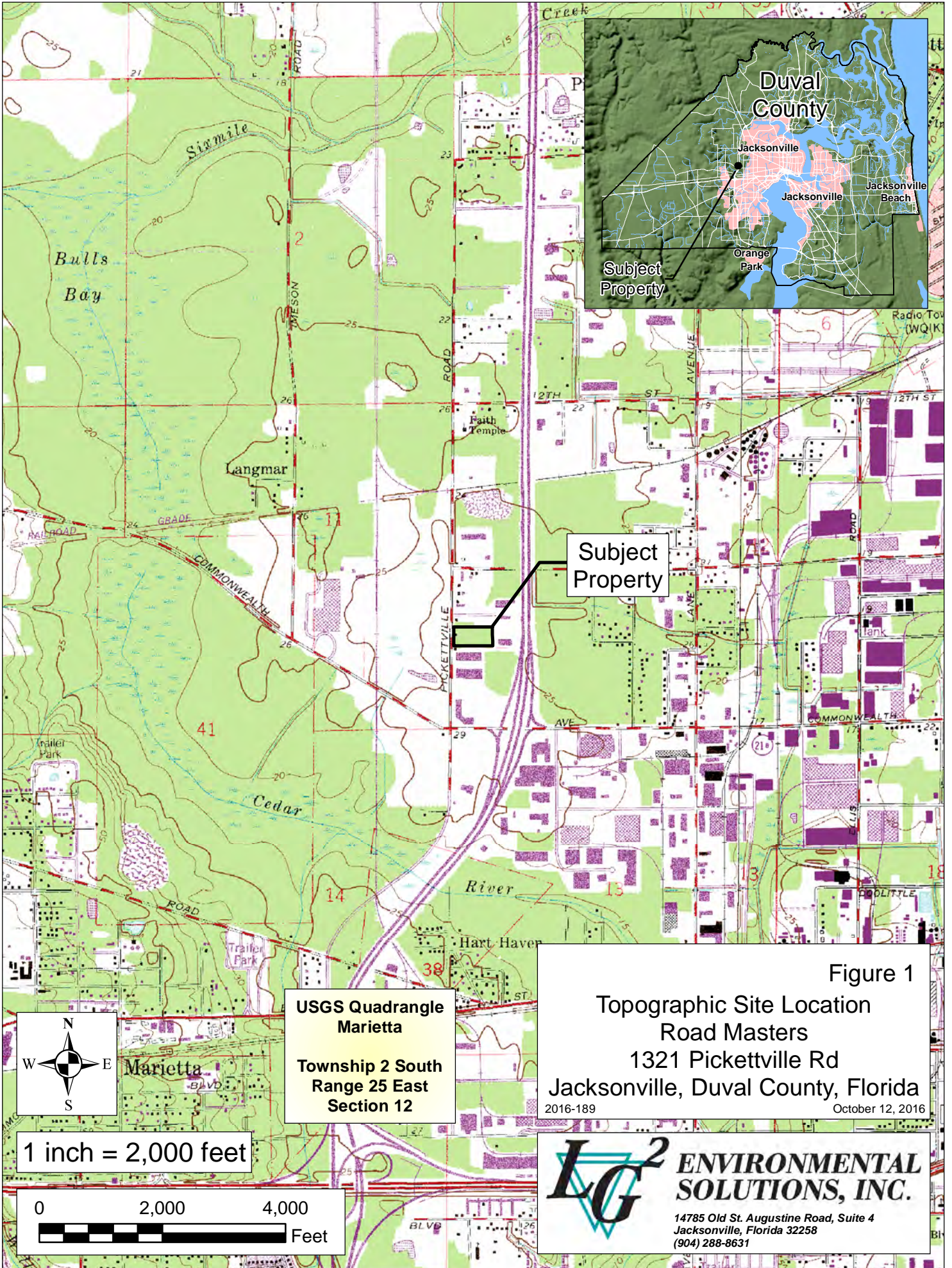
B. ADDITIONAL COMMENTS TO SUPPORT JD: .

Location Map

Review area outlined in yellow.
The review area is located approximately 0.66 miles northeast of Cedar River (RPW).

Legend
SAJ-2016-03253

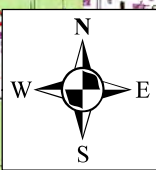




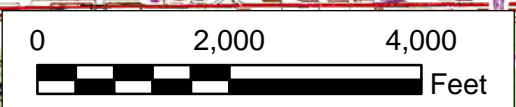
Subject Property

Figure 1
 Topographic Site Location
 Road Masters
 1321 Pickettville Rd
 Jacksonville, Duval County, Florida
 2016-189
 October 12, 2016

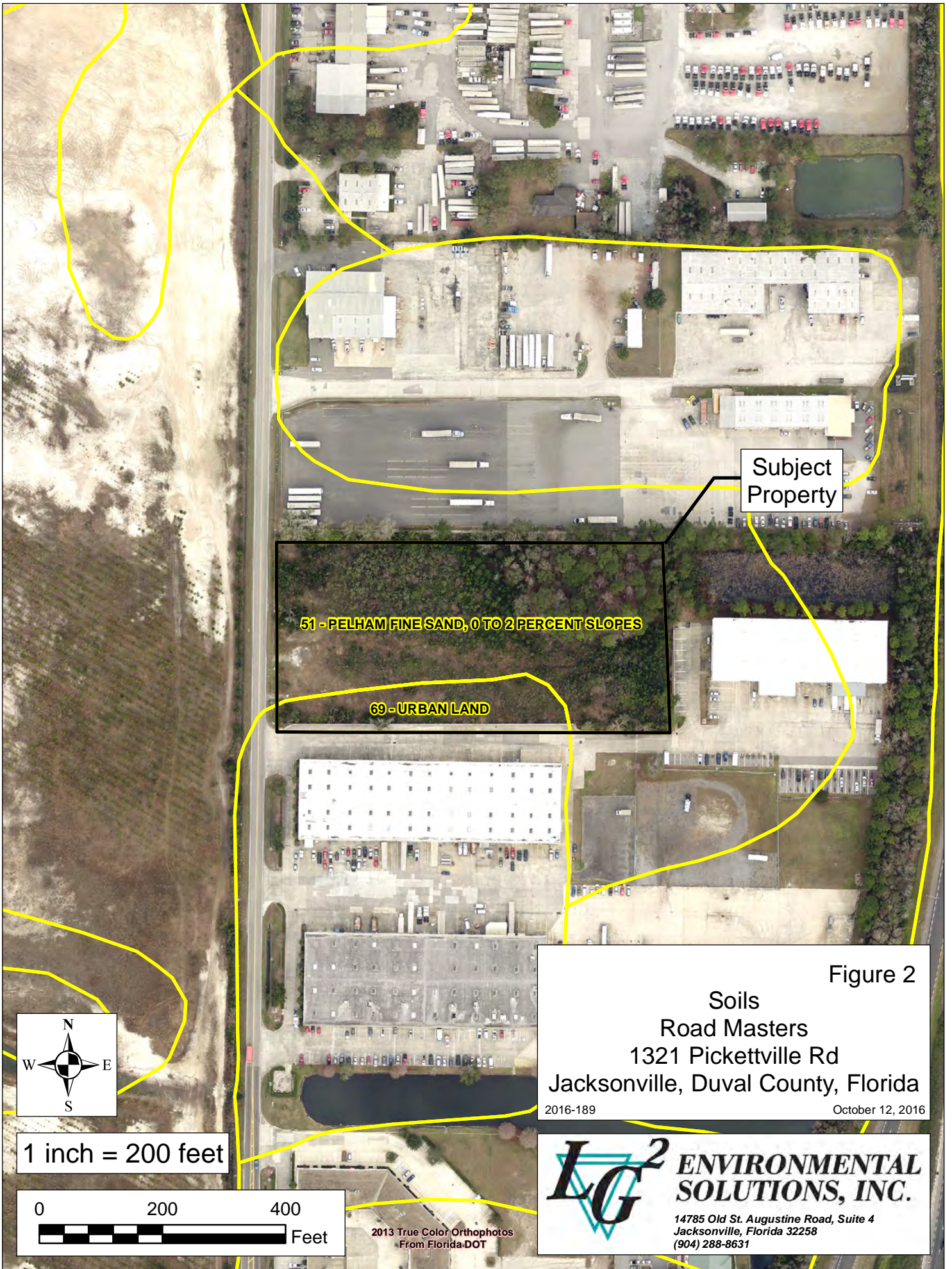
USGS Quadrangle
 Marietta
 Township 2 South
 Range 25 East
 Section 12



1 inch = 2,000 feet



LG² ENVIRONMENTAL SOLUTIONS, INC.
 14785 Old St. Augustine Road, Suite 4
 Jacksonville, Florida 32258
 (904) 288-8631



Subject Property

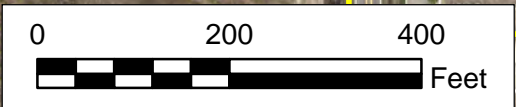
51 - PELHAM FINE SAND, 0 TO 2 PERCENT SLOPES
69 - URBAN LAND

Figure 2
Soils
Road Masters
1321 Pickettville Rd
Jacksonville, Duval County, Florida
2016-189 October 12, 2016

LG² ENVIRONMENTAL SOLUTIONS, INC.
14785 Old St. Augustine Road, Suite 4
Jacksonville, Florida 32258
(904) 288-8631




1 inch = 200 feet



2013 True Color Orthophotos
From Florida.DOT



Subject Property

 Upland Area
 Approximately 4.23 Acres


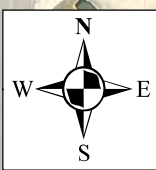
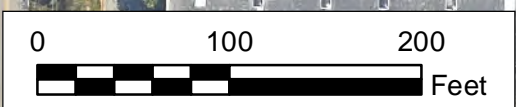
 Non-Jurisdictional Wetlands
 Approximately 0.23 Acre

Figure 3
Wetland Delineation
2016 True Color Orthophoto
Road Masters
Jacksonville, Duval County, Florida
 2016-189 October 26, 2016



1 inch = 100 feet

2016 True Color Orthophotos
From Florida DOT




ENVIRONMENTAL SOLUTIONS, INC.
 14785 Old St. Augustine Road, Suite 4
 Jacksonville, Florida 32258
 (904) 288-8631

SOIL

Sampling Point: 1-UP

Profile Description: (Describe to the depth needed to document the indicator or confirm the absence of indicators.)								
Depth (inches)	Matrix		Redox Features				Texture	Remarks
	Color (moist)	%	Color (moist)	%	Type ¹	Loc ²		
0-7	10YR 3/3	100					Sandy	
7-12	10YR 5/2	70	10YR 5/4	30	C	M		Distinct redox concentrations

¹Type: C=Concentration, D=Depletion, RM=Reduced Matrix, MS=Masked Sand Grains.

²Location: PL=Pore Lining, M=Matrix.

Hydric Soil Indicators: (Applicable to all LRRs, unless otherwise noted.)

- Histosol (A1)
- Histic Epipedon (A2)
- Black Histic (A3)
- Hydrogen Sulfide (A4)
- Stratified Layers (A5)
- Organic Bodies (A6) **(LRR, P, T, U)**
- 5 cm Mucky Mineral (A7) **(LRR P, T, U)**
- Muck Presence (A8) **(LRR U)**
- 1 cm Muck (A9) **(LRR P, T)**
- Depleted Below Dark Surface (A11)
- Thick Dark Surface (A12)
- Coast Prairie Redox (A16) **(MLRA 150A)**
- Sandy Mucky Mineral (S1) **(LRR O, S)**
- Sandy Gleyed Matrix (S4)
- Sandy Redox (S5)
- Stripped Matrix (S6)
- Dark Surface (S7) **(LRR P, S, T, U)**
- Polyvalue Below Surface (S8) **(LRR S, T, U)**
- Thin Dark Surface (S9) **(LRR S, T, U)**
- Barrier Islands 1 cm Muck (S12) **(MLRA 153B, 153D)**
- Loamy Mucky Mineral (F1) **(LRR O)**
- Loamy Gleyed Matrix (F2)
- Depleted Matrix (F3)
- Redox Dark Surface (F6)
- Depleted Dark Surface (F7)
- Redox Depressions (F8)
- Marl (F10) **(LRR U)**
- Depleted Ochric (F11) **(MLRA 151)**
- Iron-Manganese Masses (F12) **(LRR O, P, T)**
- Umbric Surface (F13) **(LRR P, T, U)**
- Delta Ochric (F17) **(MLRA 151)**
- Reduced Vertic (F18) **(MLRA 150A, 150B)**
- Piedmont Floodplain Soils (F19) **(MLRA 149A)**
- Anomalous Bright Floodplain Soils (F20) **(MLRA 149A, 153C, 153D)**
- Very Shallow Dark Surface (F22) **(MLRA 138, 152A in FL, 154)**

Indicators for Problematic Hydric Soils³:

- 1 cm Muck (A9) **(LRR O)**
- 2 cm Muck (A10) **(LRR S)**
- Coast Prairie Redox (A16) **(outside MLRA 150A)**
- Reduced Vertic (F18) **(outside MLRA 150A, 150B)**
- Piedmont Floodplain Soils (F19) **(LRR P, T)**
- Anomalous Bright Floodplain Soils (F20) **(MLRA 153B)**
- Red Parent Material (F21)
- Very Shallow Dark Surface (F22) **(outside MLRA 138, 152A in FL, 154)**
- Barrier Islands Low Chroma Matrix (TS7) **(MLRA 153B, 153D)**
- Other (Explain in Remarks)

³Indicators of hydrophytic vegetation and wetland hydrology must be present, unless disturbed or problematic.

Restrictive Layer (if observed):

Type: _____
 Depth (inches): _____

Hydric Soil Present? Yes _____ No X

Remarks:

This data form is revised from Atlantic and Gulf Coastal Plain Regional Supplement Version 2.0 to include the NRCS Field Indicators of Hydric Soils, Version 8.0, 2016.

WETLAND DETERMINATION DATA FORM – Atlantic and Gulf Coastal Plain Region

Project/Site: Road Masters City/County: Jacksonville/Duval Sampling Date: 6/14/2016
 Applicant/Owner: Raymond Lane State: FL Sampling Point: 1-UP
 Investigator(s): Brian Spahr Section, Township, Range: 12, 2 South, 25 East
 Landform (hillside, terrace, etc.): _____ Local relief (concave, convex, none): _____ Slope (%): _____
 Subregion (LRR or MLRA): LRR T Lat: _____ Long: _____ Datum: NAD83
 Soil Map Unit Name: Pelham Fine Sand NWI classification: _____

Are climatic / hydrologic conditions on the site typical for this time of year? Yes X No _____ (If no, explain in Remarks.)
 Are Vegetation _____, Soil _____, or Hydrology _____ significantly disturbed? Are "Normal Circumstances" present? Yes X No _____
 Are Vegetation _____, Soil _____, or Hydrology _____ naturally problematic? (If needed, explain any answers in Remarks.)

SUMMARY OF FINDINGS – Attach site map showing sampling point locations, transects, important features, etc.

Hydrophytic Vegetation Present? Yes <u>X</u> No _____ Hydric Soil Present? Yes _____ No <u>X</u> Wetland Hydrology Present? Yes <u>X</u> No _____	Is the Sampled Area within a Wetland? Yes _____ No <u>X</u>
Remarks:	

HYDROLOGY

Wetland Hydrology Indicators: <u>Primary Indicators (minimum of one is required; check all that apply)</u> _____ Surface Water (A1) _____ Aquatic Fauna (B13) _____ High Water Table (A2) _____ Marl Deposits (B15) (LRR U) _____ Saturation (A3) _____ Hydrogen Sulfide Odor (C1) _____ Water Marks (B1) _____ Oxidized Rhizospheres on Living Roots (C3) _____ Sediment Deposits (B2) _____ Presence of Reduced Iron (C4) _____ Drift Deposits (B3) _____ Recent Iron Reduction in Tilled Soils (C6) _____ Algal Mat or Crust (B4) _____ Thin Muck Surface (C7) _____ Iron Deposits (B5) _____ Other (Explain in Remarks) _____ Inundation Visible on Aerial Imagery (B7) _____ Water-Stained Leaves (B9)	<u>Secondary Indicators (minimum of two required)</u> _____ Surface Soil Cracks (B6) _____ Sparsely Vegetated Concave Surface (B8) _____ Drainage Patterns (B10) _____ Moss Trim Lines (B16) _____ Dry-Season Water Table (C2) <u>x</u> Crayfish Burrows (C8) _____ Saturation Visible on Aerial Imagery (C9) _____ Geomorphic Position (D2) _____ Shallow Aquitard (D3) <u>X</u> FAC-Neutral Test (D5) _____ Sphagnum Moss (D8) (LRR T,U)
--	--

Field Observations: Surface Water Present? Yes _____ No _____ Depth (inches): _____ Water Table Present? Yes _____ No _____ Depth (inches): _____ Saturation Present? Yes _____ No _____ Depth (inches): _____ (includes capillary fringe)	Wetland Hydrology Present? Yes <u>X</u> No _____
---	---

Describe Recorded Data (stream gauge, monitoring well, aerial photos, previous inspections), if available:

Remarks:

VEGETATION (Five Strata) – Use scientific names of plants.

Sampling Point: 1-UP

Tree Stratum (Plot size: 10 m)

	Absolute % Cover	Dominant Species?	Indicator Status
1. <u><i>Pinus elliottii</i></u>	<u>20</u>	<u>Yes</u>	<u>FACW</u>
2. _____	_____	_____	_____
3. _____	_____	_____	_____
4. _____	_____	_____	_____
5. _____	_____	_____	_____
6. _____	_____	_____	_____
	<u>20</u> =Total Cover		
	50% of total cover: <u>10</u>	20% of total cover: <u>4</u>	

Sapling Stratum (Plot size: 10 m)

	Absolute % Cover	Dominant Species?	Indicator Status
1. <u><i>Pinus elliottii</i></u>	<u>10</u>	<u>Yes</u>	<u>FACW</u>
2. <u><i>Serenoa repens</i></u>	<u>5</u>	<u>Yes</u>	<u>FACU</u>
3. <u><i>Ilex glabra</i></u>	<u>5</u>	<u>Yes</u>	<u>FACW</u>
4. _____	_____	_____	_____
5. _____	_____	_____	_____
6. _____	_____	_____	_____
	<u>20</u> =Total Cover		
	50% of total cover: <u>10</u>	20% of total cover: <u>4</u>	

Shrub Stratum (Plot size: _____)

	Absolute % Cover	Dominant Species?	Indicator Status
1. _____	_____	_____	_____
2. _____	_____	_____	_____
3. _____	_____	_____	_____
4. _____	_____	_____	_____
5. _____	_____	_____	_____
6. _____	_____	_____	_____
	_____ =Total Cover		
	50% of total cover: _____	20% of total cover: _____	

Herb Stratum (Plot size: _____)

	Absolute % Cover	Dominant Species?	Indicator Status
1. <u><i>Pteridium aquilinum</i></u>	<u>10</u>	<u>Yes</u>	<u>FACU</u>
2. _____	_____	_____	_____
3. _____	_____	_____	_____
4. _____	_____	_____	_____
5. _____	_____	_____	_____
6. _____	_____	_____	_____
7. _____	_____	_____	_____
8. _____	_____	_____	_____
9. _____	_____	_____	_____
10. _____	_____	_____	_____
11. _____	_____	_____	_____
	<u>10</u> =Total Cover		
	50% of total cover: <u>5</u>	20% of total cover: <u>2</u>	

Woody Vine Stratum (Plot size: _____)

	Absolute % Cover	Dominant Species?	Indicator Status
1. _____	_____	_____	_____
2. _____	_____	_____	_____
3. _____	_____	_____	_____
4. _____	_____	_____	_____
5. _____	_____	_____	_____
	_____ =Total Cover		
	50% of total cover: _____	20% of total cover: _____	

Dominance Test worksheet:

Number of Dominant Species That Are OBL, FACW, or FAC: 3 (A)

Total Number of Dominant Species Across All Strata: 5 (B)

Percent of Dominant Species That Are OBL, FACW, or FAC: 60.0% (A/B)

Prevalence Index worksheet:

Total % Cover of:	Multiply by:
OBL species <u>0</u>	x 1 = <u>0</u>
FACW species <u>35</u>	x 2 = <u>70</u>
FAC species <u>0</u>	x 3 = <u>0</u>
FACU species <u>15</u>	x 4 = <u>60</u>
UPL species <u>0</u>	x 5 = <u>0</u>
Column Totals: <u>50</u> (A)	<u>130</u> (B)
Prevalence Index = B/A = <u>2.60</u>	

Hydrophytic Vegetation Indicators:

1 - Rapid Test for Hydrophytic Vegetation

X 2 - Dominance Test is >50%

3 - Prevalence Index is ≤3.0¹

 Problematic Hydrophytic Vegetation¹ (Explain)

¹Indicators of hydric soil and wetland hydrology must be present, unless disturbed or problematic.

Definitions of Five Vegetation Strata:

Tree – Woody plants, excluding woody vines, approximately 20 ft (6 m) or more in height and 3 in. (7.6 cm) or larger in diameter at breast height (DBH).

Sapling – Woody plants, excluding woody vines, approximately 20 ft (6 m) or more in height and less than 3 in. (7.6 cm) DBH.

Shrub - Woody Plants, excluding woody vines, approximately 3 to 20 ft (1 to 6 m) in height.

Herb – All herbaceous (non-woody) plants, including herbaceous vines, regardless of size, and woody plants, except woody vines, less than approximately 3 ft (1 m) in height.

Woody Vine – All woody vines, regardless of height.

Hydrophytic Vegetation Present? Yes X No _____

Remarks: (If observed, list morphological adaptations below.)

SOIL

Sampling Point: 1-Wet

Profile Description: (Describe to the depth needed to document the indicator or confirm the absence of indicators.)								
Depth (inches)	Matrix		Redox Features				Texture	Remarks
	Color (moist)	%	Color (moist)	%	Type ¹	Loc ²		
0-6	10YR 3/1	100					Sandy	
6-12	10YR 5/2	70	10YR 5/4	30	C	M		Distinct redox concentrations

¹Type: C=Concentration, D=Depletion, RM=Reduced Matrix, MS=Masked Sand Grains.

²Location: PL=Pore Lining, M=Matrix.

Hydric Soil Indicators: (Applicable to all LRRs, unless otherwise noted.)

- Histosol (A1)
- Histic Epipedon (A2)
- Black Histic (A3)
- Hydrogen Sulfide (A4)
- Stratified Layers (A5)
- Organic Bodies (A6) **(LRR, P, T, U)**
- 5 cm Mucky Mineral (A7) **(LRR P, T, U)**
- Muck Presence (A8) **(LRR U)**
- 1 cm Muck (A9) **(LRR P, T)**
- Depleted Below Dark Surface (A11)
- Thick Dark Surface (A12)
- Coast Prairie Redox (A16) **(MLRA 150A)**
- Sandy Mucky Mineral (S1) **(LRR O, S)**
- Sandy Gleyed Matrix (S4)
- Sandy Redox (S5)
- Stripped Matrix (S6)
- ? Dark Surface (S7) **(LRR P, S, T, U)**
- Polyvalue Below Surface (S8) **(LRR S, T, U)**

- Thin Dark Surface (S9) **(LRR S, T, U)**
- Barrier Islands 1 cm Muck (S12) **(MLRA 153B, 153D)**
- Loamy Mucky Mineral (F1) **(LRR O)**
- Loamy Gleyed Matrix (F2)
- Depleted Matrix (F3)
- Redox Dark Surface (F6)
- Depleted Dark Surface (F7)
- Redox Depressions (F8)
- Marl (F10) **(LRR U)**
- Depleted Ochric (F11) **(MLRA 151)**
- Iron-Manganese Masses (F12) **(LRR O, P, T)**
- Umbric Surface (F13) **(LRR P, T, U)**
- Delta Ochric (F17) **(MLRA 151)**
- Reduced Vertic (F18) **(MLRA 150A, 150B)**
- Piedmont Floodplain Soils (F19) **(MLRA 149A)**
- Anomalous Bright Floodplain Soils (F20) **(MLRA 149A, 153C, 153D)**
- Very Shallow Dark Surface (F22) **(MLRA 138, 152A in FL, 154)**

Indicators for Problematic Hydric Soils³:

- 1 cm Muck (A9) **(LRR O)**
- 2 cm Muck (A10) **(LRR S)**
- Coast Prairie Redox (A16) **(outside MLRA 150A)**
- Reduced Vertic (F18) **(outside MLRA 150A, 150B)**
- Piedmont Floodplain Soils (F19) **(LRR P, T)**
- Anomalous Bright Floodplain Soils (F20) **(MLRA 153B)**
- Red Parent Material (F21)
- Very Shallow Dark Surface (F22) **(outside MLRA 138, 152A in FL, 154)**
- Barrier Islands Low Chroma Matrix (TS7) **(MLRA 153B, 153D)**
- Other (Explain in Remarks)

³Indicators of hydrophytic vegetation and wetland hydrology must be present, unless disturbed or problematic.

Restrictive Layer (if observed):

Type: _____
 Depth (inches): _____

Hydric Soil Present? Yes X No _____

Remarks:

This data form is revised from Atlantic and Gulf Coastal Plain Regional Supplement Version 2.0 to include the NRCS Field Indicators of Hydric Soils, Version 8.0, 2016.

WETLAND DETERMINATION DATA FORM – Atlantic and Gulf Coastal Plain Region

Project/Site: Road Masters City/County: Jacksonville/Duval Sampling Date: 6/14/2016
 Applicant/Owner: Raymond Lane State: FL Sampling Point: 1-Wet
 Investigator(s): Brian Spahr Section, Township, Range: 12, 2 South, 25 East
 Landform (hillside, terrace, etc.): _____ Local relief (concave, convex, none): concave Slope (%): _____
 Subregion (LRR or MLRA): LRR T Lat: 30.339806 Long: 81.763276 Datum: NAD83
 Soil Map Unit Name: Pelham Fine Sand NWI classification: _____

Are climatic / hydrologic conditions on the site typical for this time of year? Yes X No _____ (If no, explain in Remarks.)
 Are Vegetation _____, Soil _____, or Hydrology _____ significantly disturbed? Are "Normal Circumstances" present? Yes X No _____
 Are Vegetation _____, Soil _____, or Hydrology _____ naturally problematic? (If needed, explain any answers in Remarks.)

SUMMARY OF FINDINGS – Attach site map showing sampling point locations, transects, important features, etc.

Hydrophytic Vegetation Present? Yes <u>X</u> No _____ Hydric Soil Present? Yes <u>X</u> No _____ Wetland Hydrology Present? Yes <u>X</u> No _____	Is the Sampled Area within a Wetland? Yes <u>X</u> No _____
Remarks:	

HYDROLOGY

Wetland Hydrology Indicators: <u>Primary Indicators (minimum of one is required; check all that apply)</u> <input checked="" type="checkbox"/> Surface Water (A1) _____ Aquatic Fauna (B13) _____ High Water Table (A2) _____ Marl Deposits (B15) (LRR U) _____ Saturation (A3) _____ Hydrogen Sulfide Odor (C1) _____ Water Marks (B1) _____ Oxidized Rhizospheres on Living Roots (C3) _____ Sediment Deposits (B2) _____ Presence of Reduced Iron (C4) _____ Drift Deposits (B3) _____ Recent Iron Reduction in Tilled Soils (C6) _____ Algal Mat or Crust (B4) <input checked="" type="checkbox"/> Thin Muck Surface (C7) _____ Iron Deposits (B5) _____ Other (Explain in Remarks) _____ Inundation Visible on Aerial Imagery (B7) _____ Water-Stained Leaves (B9)	<u>Secondary Indicators (minimum of two required)</u> _____ Surface Soil Cracks (B6) _____ Sparsely Vegetated Concave Surface (B8) _____ Drainage Patterns (B10) _____ Moss Trim Lines (B16) _____ Dry-Season Water Table (C2) <input checked="" type="checkbox"/> Crayfish Burrows (C8) _____ Saturation Visible on Aerial Imagery (C9) _____ Geomorphic Position (D2) _____ Shallow Aquitard (D3) <input checked="" type="checkbox"/> FAC-Neutral Test (D5) _____ Sphagnum Moss (D8) (LRR T,U)
---	--

Field Observations: Surface Water Present? Yes <u>x</u> No _____ Depth (inches): <u>1</u> Water Table Present? Yes _____ No _____ Depth (inches): _____ Saturation Present? Yes _____ No _____ Depth (inches): _____ (includes capillary fringe)	Wetland Hydrology Present? Yes <u>X</u> No _____
---	--

Describe Recorded Data (stream gauge, monitoring well, aerial photos, previous inspections), if available:

Remarks:

VEGETATION (Five Strata) – Use scientific names of plants.

Sampling Point: 1-Wet

Tree Stratum (Plot size: <u>10 m</u>)	Absolute % Cover	Dominant Species?	Indicator Status
1. <u>Pinus elliottii</u>	<u>20</u>	<u>Yes</u>	<u>FACW</u>
2. <u>Nyssa sylvatica</u>	<u>20</u>	<u>Yes</u>	<u>FAC</u>
3. _____	_____	_____	_____
4. _____	_____	_____	_____
5. _____	_____	_____	_____
6. _____	_____	_____	_____
	<u>40</u> =Total Cover		
	50% of total cover: <u>20</u>	20% of total cover: <u>8</u>	

Sapling Stratum (Plot size: <u>10 m</u>)	Absolute % Cover	Dominant Species?	Indicator Status
1. <u>Pinus elliottii</u>	<u>10</u>	<u>Yes</u>	<u>FACW</u>
2. <u>Nyssa sylvatica</u>	<u>10</u>	<u>Yes</u>	<u>FAC</u>
3. <u>Lyonia lucida</u>	<u>10</u>	<u>Yes</u>	<u>FACW</u>
4. _____	_____	_____	_____
5. _____	_____	_____	_____
6. _____	_____	_____	_____
	<u>30</u> =Total Cover		
	50% of total cover: <u>15</u>	20% of total cover: <u>6</u>	

Shrub Stratum (Plot size: _____)	Absolute % Cover	Dominant Species?	Indicator Status
1. _____	_____	_____	_____
2. _____	_____	_____	_____
3. _____	_____	_____	_____
4. _____	_____	_____	_____
5. _____	_____	_____	_____
6. _____	_____	_____	_____
	_____ =Total Cover		
	50% of total cover: _____	20% of total cover: _____	

Herb Stratum (Plot size: _____)	Absolute % Cover	Dominant Species?	Indicator Status
1. <u>Woodwardia virginica</u>	<u>25</u>	<u>Yes</u>	<u>OBL</u>
2. _____	_____	_____	_____
3. _____	_____	_____	_____
4. _____	_____	_____	_____
5. _____	_____	_____	_____
6. _____	_____	_____	_____
7. _____	_____	_____	_____
8. _____	_____	_____	_____
9. _____	_____	_____	_____
10. _____	_____	_____	_____
11. _____	_____	_____	_____
	<u>25</u> =Total Cover		
	50% of total cover: <u>13</u>	20% of total cover: <u>5</u>	

Woody Vine Stratum (Plot size: _____)	Absolute % Cover	Dominant Species?	Indicator Status
1. _____	_____	_____	_____
2. _____	_____	_____	_____
3. _____	_____	_____	_____
4. _____	_____	_____	_____
5. _____	_____	_____	_____
	_____ =Total Cover		
	50% of total cover: _____	20% of total cover: _____	

Dominance Test worksheet:

Number of Dominant Species That Are OBL, FACW, or FAC: 6 (A)

Total Number of Dominant Species Across All Strata: 6 (B)

Percent of Dominant Species That Are OBL, FACW, or FAC: 100.0% (A/B)

Prevalence Index worksheet:

Total % Cover of:	Multiply by:
OBL species <u>25</u>	x 1 = <u>25</u>
FACW species <u>40</u>	x 2 = <u>80</u>
FAC species <u>30</u>	x 3 = <u>90</u>
FACU species <u>0</u>	x 4 = <u>0</u>
UPL species <u>0</u>	x 5 = <u>0</u>
Column Totals: <u>95</u> (A)	<u>195</u> (B)
Prevalence Index = B/A = <u>2.05</u>	

Hydrophytic Vegetation Indicators:

1 - Rapid Test for Hydrophytic Vegetation

2 - Dominance Test is >50%

3 - Prevalence Index is ≤3.0¹

 Problematic Hydrophytic Vegetation¹ (Explain)

¹Indicators of hydric soil and wetland hydrology must be present, unless disturbed or problematic.

Definitions of Five Vegetation Strata:

Tree – Woody plants, excluding woody vines, approximately 20 ft (6 m) or more in height and 3 in. (7.6 cm) or larger in diameter at breast height (DBH).

Sapling – Woody plants, excluding woody vines, approximately 20 ft (6 m) or more in height and less than 3 in. (7.6 cm) DBH.

Shrub - Woody Plants, excluding woody vines, approximately 3 to 20 ft (1 to 6 m) in height.

Herb – All herbaceous (non-woody) plants, including herbaceous vines, regardless of size, and woody plants, except woody vines, less than approximately 3 ft (1 m) in height.

Woody Vine – All woody vines, regardless of height.

Hydrophytic Vegetation Present? Yes No

Remarks: (If observed, list morphological adaptations below.)