

APPROVED JURISDICTIONAL DETERMINATION FORM
U.S. Army Corps of Engineers

This form should be completed by following the instructions provided in Section IV of the JD Form Instructional Guidebook.

SECTION I: BACKGROUND INFORMATION

A.REPORT COMPLETION DATE FOR APPROVED JURISDICTIONAL DETERMINATION (JD): March 21, 2017

B.DISTRICT OFFICE, FILE NAME, AND NUMBER: Jacksonville District/SAJ-2015-00517-OK Willow Walk

0.PROJECT LOCATION AND BACKGROUND INFORMATION: The Willow Walk property is located north of Mendoza Road and immediately east of Ellenton Gillette Road, Section 5, Township 36S, Range 18E, 27° 33'19.62" N / 82° 31' 22.62" W, Manatee County, Florida. The project proposes to construct a residential development on highly disturbed agricultural lands. In total, the project site supports 18.14 acres of ACOE jurisdictional wetlands, and will dredge or fill 1.29 acres (7% of onsite ACOE jurisdictional wetlands) of low quality wetlands. The project will preserve in perpetuity 16.86 (93% of ACOE jurisdictional wetlands). The project design will stabilize the hydroperiods of these wetlands by incorporating them into the storm water management system and fill existing agricultural ditches that currently affect the hydroperiods of these wetlands. The project proposes to offset the 1.29 acre of ACOE jurisdictional wetland impacts the removal of spoil material and hydroperiod stabilization of Wetlands Q and R. The project has met the federal no-net- loss of wetlands. The Willow Walk property also supports a series of agricultural ditches that are classified as Other Waters of the U.S. (OWUS) which total 2.69 acres. All 2.69 acres of OWUS will be dredged or filled as part of the development.

State: **FL** County/parish/borough: **Manatee** City: **Manatee**
Center coordinates of site (lat/long in degree decimal format): Lat. **27°33'19.62"** N, Long. **82°31'22.62"** W.
Universal Transverse Mercator:

Name of nearest waterbody: **McMullen Creek**

Name of nearest Traditional Navigable Water (TNW) into which the aquatic resource flows: **Tera Ceia Bay**

Name of watershed or Hydrologic Unit Code (HUC): **Tera Ceia Bay Watershed**

Check if map/diagram of review area and/or potential jurisdictional areas is/are available upon request.

Check if other sites (e.g., offsite mitigation sites, disposal sites, etc...) are associated with this action and are recorded on a different JD form.

C.REVIEW PERFORMED FOR SITE EVALUATION (CHECK ALL THAT APPLY):

Office (Desk) Determination. Date:

Field Determination. Date(s): **March 29, 2016**

SECTION II: SUMMARY OF FINDINGS

A.RHA SECTION 10 DETERMINATION OF JURISDICTION.

There **Appear to be no** "navigable waters of the U.S." within Rivers and Harbors Act (RHA) jurisdiction (as defined by 33 CFR part 329) in the review area. [Required]

Waters subject to the ebb and flow of the tide.

Waters are presently used, or have been used in the past, or may be susceptible for use to transport interstate or foreign commerce.

Explain:

B.CWA SECTION 404 DETERMINATION OF JURISDICTION.

There **Are** "waters of the U.S." within Clean Water Act (CWA) jurisdiction (as defined by 33 CFR part 328) in the review area. [Required]

1. Waters of the U.S.

a. Indicate presence of waters of U.S. in review area (check all that apply): ¹

TNWs, including territorial seas

Wetlands adjacent to TNWs

Relatively permanent waters² (RPWs) that flow directly or indirectly into TNWs

Non-RPWs that flow directly or indirectly into TNWs

Wetlands directly abutting RPWs that flow directly or indirectly into TNWs

Wetlands adjacent to but not directly abutting RPWs that flow directly or indirectly into TNWs

Wetlands adjacent to non-RPWs that flow directly or indirectly into TNWs

Impoundments of jurisdictional waters

Isolated (interstate or intrastate) waters, including isolated wetlands

1

Boxes checked below shall be supported by completing the appropriate sections in Section III below.

² For purposes of this form, an RPW is defined as a tributary that is not a TNW and that typically flows year-round or has continuous flow at least "seasonally" (e.g., typically 3 months).

b. Identify (estimate) size of waters of the U.S. in the review area:

Non-wetland waters: linear feet: width (ft) and/or 2.69 acres.

Wetlands: 18.14 acres.

0. Limits (boundaries) of jurisdiction based on: 1987 Delineation Manual

Elevation of established OHWM (if known):

2. Non-regulated waters/wetlands (check if applicable):³

Potentially jurisdictional waters and/or wetlands were assessed within the review area and determined to be not jurisdictional.

Explain: 1.59 acres of highly disturbed pasture marshes that have no hydrologic connects to non-navigable RPW (McMullen Creek). These wetlands are not abutting or adjacent to the non-navigable RPW. Any ditch connections to these wetlands do not connect to other onsite ditches classified as OWUS that then connect into the non-navigable RPW.

SECTION III: CWA ANALYSIS

A. TNWs AND WETLANDS ADJACENT TO TNWs

The agencies will assert jurisdiction over TNWs and wetlands adjacent to TNWs. If the aquatic resource is a TNW, complete Section III.A.1 and Section III.D.1. only; if the aquatic resource is a wetland adjacent to a TNW, complete Sections III.A.1 and 2 and Section III.D.1.; otherwise, see Section III.B below.

1. TNW

Identify TNW:

Summarize rationale supporting determination:

0. Wetland adjacent to TNW

Summarize rationale supporting conclusion that wetland is "adjacent":

B. CHARACTERISTICS OF TRIBUTARY (THAT IS NOT A TNW) AND ITS ADJACENT WETLANDS (IF ANY):

This section summarizes information regarding characteristics of the tributary and its adjacent wetlands, if any, and it helps determine whether or not the standards for jurisdiction established under *Rapanos* have been met.

The agencies will assert jurisdiction over non-navigable tributaries of TNWs where the tributaries are "relatively permanent waters" (RPWs), i.e. tributaries that typically flow year-round or have continuous flow at least seasonally (e.g., typically 3 months). A wetland that directly abuts an RPW is also jurisdictional. If the aquatic resource is not a TNW, but has year-round (perennial) flow, skip to Section III.D.2. If the aquatic resource is a wetland directly abutting a tributary with perennial flow, skip to Section III.D.4.

A wetland that is adjacent to but that does not directly abut an RPW requires a significant nexus evaluation. Corps districts and EPA regions will include in the record any available information that documents the existence of a significant nexus between a relatively permanent tributary that is not perennial (and its adjacent wetlands if any) and a traditional navigable water, even though a significant nexus finding is not required as a matter of law.

If the waterbody⁴ is not an RPW, or a wetland directly abutting an RPW, a JD will require additional data to determine if the waterbody has a significant nexus with a TNW. If the tributary has adjacent wetlands, the significant nexus evaluation must consider the tributary in combination with all of its adjacent wetlands. This significant nexus evaluation that combines, for analytical purposes, the tributary and all of its adjacent wetlands is used whether the review area identified in the JD request is the tributary, or its adjacent wetlands, or both. If the JD covers a tributary with adjacent wetlands, complete Section III.B.1 for the tributary, Section III.B.2 for any onsite wetlands, and Section III.B.3 for all wetlands adjacent to that tributary, both onsite and offsite. The determination whether a significant nexus exists is determined in Section III.C below.

1. Characteristics of non-TNWs that flow directly or indirectly into TNW

(i) General Area Conditions:

Watershed size:

Pick List

Supporting documentation is presented in Section III.F.

⁴Note that the Instructional Guidebook contains additional information regarding swales, ditches, washes, and erosional features generally and in the arid West.

Drainage area: **Pick List**
Average annual rainfall: inches
Average annual snowfall: inches

(ii) Physical Characteristics:

(a) Relationship with TNW:

Tributary flows directly into TNW.
Tributary flows through **Pick List** tributaries before entering TNW.

Project waters are **1 (or less)** river miles from TNW.
Project waters are **Pick List** river miles from RPW.
Project waters are **Pick List** aerial (straight) miles from TNW.
Project waters are **Pick List** aerial (straight) miles from RPW.
Project waters cross or serve as state boundaries. Explain:

Identify flow route to TNW⁵: Tributary stream order, if known:

(b) General Tributary Characteristics (check all that apply):

Tributary is: Natural
Artificial (man-made). Explain:
Manipulated (man-altered). Explain:

Tributary properties with respect to top of bank (estimate):

Average width: feet
Average depth: feet
Average side slopes: **Pick List**.

Primary tributary substrate composition (check all that apply):

Silts Sands Concrete
Cobbles Gravel Muck
Bedrock Vegetation. Type/% cover:
Other. Explain:

Tributary condition/stability [e.g., highly eroding, sloughing banks]. Explain:

Presence of run/riffle/pool complexes. Explain:

Tributary geometry: **Pick List**

Tributary gradient (approximate average slope): %

(c) Flow:

Tributary provides for: **Pick List**

Estimate average number of flow events in review area/year: **Pick List**

Describe flow regime:

Other information on duration and volume:

Surface flow is: **Pick List**. Characteristics:

Subsurface flow: **Pick List**. Explain findings:

Dye (or other) test performed:

Tributary has (check all that apply):

Bed and banks

OHWM⁶ (check all indicators that apply):

clear, natural line impressed on the bank	the presence of litter and debris
changes in the character of soil shelving	destruction of terrestrial vegetation
vegetation matted down, bent, or absent	the presence of wrack line
leaf litter disturbed or washed away	sediment sorting
sediment deposition	scour
water staining	multiple observed or predicted flow events
	abrupt change in plant community

⁵ Flow route can be described by identifying, e.g., tributary a, which flows through the review area, to flow into tributary b, which then flows into TNW. ⁶A natural or man-made discontinuity in the OHWM does not necessarily sever jurisdiction (e.g., where the stream temporarily flows underground, or where the OHWM has been removed by development or agricultural practices). Where there is a break in the OHWM that is unrelated to the waterbody's flow regime (e.g., flow over a rock outcrop or through a culvert), the agencies will look for indicators of flow above and below the break.

other (list):
Discontinuous OHWM.⁷ Explain:

If factors other than the OHWM were used to determine lateral extent of CWA jurisdiction (check all that apply):

High Tide Line indicated by:	Mean High Water Mark indicated by:
oil or scum line along shore objects	survey to available datum;
fine shell or debris deposits (foreshore)	physical markings;
physical markings/characteristics	vegetation lines/changes in vegetation types.
tidal gauges	
other (list):	

iii) Chemical Characteristics:

Characterize tributary (e.g., water color is clear, discolored, oily film; water quality; general watershed characteristics, etc.).
Explain:
Identify specific pollutants, if known:

iv) Biological Characteristics. Channel supports (check all that apply):

Riparian corridor. Characteristics (type, average width):
Wetland fringe. Characteristics:
Habitat for:
Federally Listed species. Explain findings:
Fish/spawn areas. Explain findings:
Other environmentally-sensitive species. Explain findings:
Aquatic/wildlife diversity. Explain findings:

2. Characteristics of wetlands adjacent to non-TNW that flow directly or indirectly into TNW

(i) Physical Characteristics:

a) General Wetland Characteristics:

Properties:
Wetland size: acres
Wetland type. Explain:
Wetland quality. Explain:
Project wetlands cross or serve as state boundaries. Explain:

b) General Flow Relationship with Non-TNW:

Flow is: **Pick List**. Explain:

Surface flow is: **Pick List**

Characteristics:

Subsurface flow: **Pick List**. Explain findings:

Dye (or other) test performed:

c) Wetland Adjacency Determination with Non-TNW:

Directly abutting

Not directly abutting

Discrete wetland hydrologic connection. Explain:

Ecological connection. Explain:

Separated by berm/barrier. Explain:

(d) Proximity (Relationship) to TNW

Project wetlands are **Pick List** river miles from TNW.

Project waters are **Pick List** aerial (straight) miles from TNW.

Flow is from: **Pick List**.

Estimate approximate location of wetland as within the **Pick List**

(ii) Chemical Characteristics:

Characterize wetland system (e.g., water color is clear, brown, oil film on surface; water quality; general watershed characteristics; etc.). Explain:
Identify specific pollutants, if known:

⁷Ibid.

(iii) Biological Characteristics. Wetland supports (check all that apply):

Riparian buffer. Characteristics (type, average width):
 Vegetation type/percent cover. Explain:
 Habitat for:
 Federally Listed species. Explain findings:
 Fish/spawn areas. Explain findings:
 Other environmentally-sensitive species. Explain findings:
 Aquatic/wildlife diversity. Explain findings:

3. Characteristics of all wetlands adjacent to the tributary (if any)

All wetland(s) being considered in the cumulative analysis: **Pick List**

Approximately (18.07) acres in total are being considered in the cumulative analysis.

For each wetland, specify the following:

<u>Directly abuts? (Y/N)</u>	<u>Size (in acres)</u>	<u>Directly abuts? (Y/N)</u>	<u>Size (in acres)</u>
W-AA – Yes	0.80		
W-BB1 – Yes	2.28		
W-C - Yes	0.08		
W-E - Yes	0.60		
W-Q - Yes	3.74		
W-R - Yes	6.69		
W-V - Yes	0.82		
W-X - Yes	3.06		

Summarize overall biological, chemical and physical functions being performed: **Onsite abutting wetlands are pasture wetlands disturbed by historical agricultural activities. These wetlands have agricultural ditches connecting them that have altered the hydroperiod of these onsite wetlands. The abutting wetlands provide marginal biological, chemical and physical wetland characteristics and functions.**

C. SIGNIFICANT NEXUS DETERMINATION

A significant nexus analysis will assess the flow characteristics and functions of the tributary itself and the functions performed by any wetlands adjacent to the tributary to determine if they significantly affect the chemical, physical, and biological integrity of a TNW. For each of the following situations, a significant nexus exists if the tributary, in combination with all of its adjacent wetlands, has more than a speculative or insubstantial effect on the chemical, physical and/or biological integrity of a TNW. Considerations when evaluating significant nexus include, but are not limited to the volume, duration, and frequency of the flow of water in the tributary and its proximity to a TNW, and the functions performed by the tributary and all its adjacent wetlands. It is not appropriate to determine significant nexus based solely on any specific threshold of distance (e.g. between a tributary and its adjacent wetland or between a tributary and the TNW). Similarly, the fact an adjacent wetland lies within or outside of a floodplain is not solely determinative of significant nexus.

Draw connections between the features documented and the effects on the TNW, as identified in the *Rapanos* Guidance and discussed in the Instructional Guidebook. Factors to consider include, for example:

- ≥ Does the tributary, in combination with its adjacent wetlands (if any), have the capacity to carry pollutants or flood waters to TNWs, or to reduce the amount of pollutants or flood waters reaching a TNW?
- ≥ Does the tributary, in combination with its adjacent wetlands (if any), provide habitat and lifecycle support functions for fish and other species, such as feeding, nesting, spawning, or rearing young for species that are present in the TNW?
- ≥ Does the tributary, in combination with its adjacent wetlands (if any), have the capacity to transfer nutrients and organic carbon that support downstream foodwebs?
- ≥ Does the tributary, in combination with its adjacent wetlands (if any), have other relationships to the physical, chemical, or biological integrity of the TNW?

Note: the above list of considerations is not inclusive and other functions observed or known to occur should be documented below:

1. **Significant nexus findings for non-RPW that has no adjacent wetlands and flows directly or indirectly into TNWs.**
 Explain findings of presence or absence of significant nexus below, based on the tributary itself, then go to Section III.D:
2. **Significant nexus findings for non-RPW and its adjacent wetlands, where the non-RPW flows directly or indirectly into TNWs.** Explain findings of presence or absence of significant nexus below, based on the tributary in combination with all of its adjacent wetlands, then go to Section III.D: There are several onsite man-made agricultural ditches that flow seasonally and are classified as OWUS. These are also considered to be non-RPW, and have adjacent wetlands in which they drain giving the ACOE jurisdiction over these adjacent wetlands pursuant to the Significant Nexus

test. There are also a series of man-made ditches that drain only uplands or are connected to wetlands that do not connect to RPW's or TWN's, and therefore, are isolated and these ditches and wetlands are not considered to be ACOE jurisdictional Waters of the U.S..

3. **Significant nexus findings for wetlands adjacent to an RPW but that do not directly abut the RPW.** Explain findings of presence or absence of significant nexus below, based on the tributary in combination with all of its adjacent wetlands, then go to Section III.D:

D. DETERMINATIONS OF JURISDICTIONAL FINDINGS. THE SUBJECT WATERS/WETLANDS ARE (CHECK ALL THAT APPLY):

1. TNWs and Adjacent Wetlands. Check all that apply and provide size estimates in review area:

TNWs: linear feet width (ft), Or, acres.

Wetlands adjacent to TNWs: acres.

2. RPWs that flow directly or indirectly into TNWs.

Tributaries of TNWs where tributaries typically flow year-round are jurisdictional. Provide data and rationale indicating that tributary is perennial:

Tributaries of TNW where tributaries have continuous flow "seasonally" (e.g., typically three months each year) are jurisdictional. Data supporting this conclusion is provided at Section III.B. Provide rationale indicating that tributary flows seasonally:

Provide estimates for jurisdictional waters in the review area (check all that apply):

Tributary waters: linear feet width (ft).

Other non-wetland waters: acres.

Identify type(s) of waters: .

3. Non-RPWs⁸ that flow directly or indirectly into TNWs.

Waterbody that is not a TNW or an RPW, but flows directly or indirectly into a TNW, and it has a significant nexus with a

TNW is jurisdictional. Data supporting this conclusion is provided at Section III.C.

Provide estimates for jurisdictional waters within the review area (check all that apply):

Tributary waters: linear feet width (ft).

Other non-wetland waters: acres.

Identify type(s) of waters: .

4. Wetlands directly abutting an RPW that flow directly or indirectly into TNWs.

Wetlands directly abut RPW and thus are jurisdictional as adjacent wetlands.

Wetlands directly abutting an RPW where tributaries typically flow year-round. Provide data and rationale indicating that tributary is perennial in Section III.D.2, above. Provide rationale indicating that wetland is directly abutting an RPW: .

Wetlands directly abutting an RPW where tributaries typically flow "seasonally." Provide data indicating that tributary is seasonal in Section III.B and rationale in Section III.D.2, above. Provide rationale indicating that wetland is directly abutting an RPW: .

Provide acreage estimates for jurisdictional wetlands in the review area: acres.

5. Wetlands adjacent to but not directly abutting an RPW that flow directly or indirectly into TNWs.

Wetlands that do not directly abut an RPW, but when considered in combination with the tributary to which they are adjacent and with similarly situated adjacent wetlands, have a significant nexus with a TNW are jurisdictional. Data supporting this conclusion is provided at Section III.C.

Provide acreage estimates for jurisdictional wetlands in the review area: acres.

6. Wetlands adjacent to non-RPWs that flow directly or indirectly into TNWs.

Wetlands adjacent to such waters, and have when considered in combination with the tributary to which they are adjacent and with similarly situated adjacent wetlands, have a significant nexus with a TNW are jurisdictional. Data supporting this conclusion is provided at Section III.C.

Provide estimates for jurisdictional wetlands in the review area: **18.14**acres.

7. Impoundments of jurisdictional waters.⁹

As a general rule, the impoundment of a jurisdictional tributary remains jurisdictional.

Demonstrate that impoundment was created from “waters of the U.S.,” or

⁸See Footnote # 3.

⁹To complete the analysis refer to the key in Section III.D.6 of the Instructional Guidebook. Demonstrate that water meets the criteria for one of the categories presented above (1-6), or Demonstrate that water is isolated with a nexus to commerce (see E below).

E. ISOLATED [INTERSTATE OR INTRA-STATE] WATERS, INCLUDING ISOLATED WETLANDS, THE USE, DEGRADATION OR DESTRUCTION OF WHICH COULD AFFECT INTERSTATE COMMERCE, INCLUDING ANY SUCH WATERS (CHECK ALL THAT APPLY):¹⁰

which are or could be used by interstate or foreign travelers for recreational or other purposes.

from which fish or shellfish are or could be taken and sold in interstate or foreign commerce.

which are or could be used for industrial purposes by industries in interstate commerce.

Interstate isolated waters. Explain: .

Other factors. Explain: .

Identify water body and summarize rationale supporting determination:

Provide estimates for jurisdictional waters in the review area (check all that apply):

Tributary waters: linear feet width (ft).

Other non-wetland waters: **2.69 acres.**

Identify type(s) of waters: .

Wetlands: **18.14 acres.**

0. NON-JURISDICTIONAL WATERS, INCLUDING WETLANDS (CHECK ALL THAT APPLY):

If potential wetlands were assessed within the review area, these areas did not meet the criteria in the 1987 Corps of Engineers

Wetland Delineation Manual and/or appropriate Regional Supplements.

Review area included isolated waters with no substantial nexus to interstate (or foreign) commerce.

Prior to the Jan 2001 Supreme Court decision in “*SWANCC*,” the review area would have been regulated based solely on the “Migratory Bird Rule” (MBR).

Waters do not meet the “Significant Nexus” standard, where such a finding is required for jurisdiction. Explain: **See Section III.C above..**

Other: (explain, if not covered above): .

Provide acreage estimates for non-jurisdictional waters in the review area, where the sole potential basis of jurisdiction is the MBR factors (i.e., presence of migratory birds, presence of endangered species, use of water for irrigated agriculture), using best professional judgment (check all that apply):

Non-wetland waters (i.e., rivers, streams): linear feet width (ft).

Lakes/ponds: acres.

Other non-wetland waters: acres. List type of aquatic resource: .

Wetlands: acres.

Provide acreage estimates for non-jurisdictional waters in the review area that do not meet the “Significant Nexus” standard, where such a finding is required for jurisdiction (check all that apply):

Non-wetland waters (i.e., rivers, streams): linear feet width (ft).

Lakes/ponds: acres.

Other non-wetland waters: **0.55 acres: OWUS-E (0.24 ac.); OWUS F-1 (0.04 ac.); OWUS-G2 (0.10 ac.); OWUS G3 (0.02 ac.); OWUS K (0.08 ac.); OWUS-L1 (0.02 ac.); OWUS L2 (0.05 ac.)**. List type of aquatic resource: Agricultural ditches that drain only uplands, or are connected to wetlands, but then do not connect to non-RPWs onsite (which are agricultural ditches that connect offsite to RPW's and TNW's) which then connect offsite to RPW and TNW.

Wetlands: **1.59 acres.**

SECTION IV: DATA SOURCES.

A. SUPPORTING DATA. Data reviewed for JD (check all that apply - checked items shall be included in case file and, where checked

and requested, appropriately reference sources below):

Maps, plans, plots or plat submitted by or on behalf of the applicant/consultant: Current aerial w/ surveyed ACOE and non-ACOE wetlands and OWUS's, and locations of upland/wetland paired data sheet locations prepared by E Co Consultants, Inc. Current aerial with NRCS Soils overlay..
Data sheets prepared/submitted by or on behalf of the applicant/consultant.
Office concurs with data sheets/delineation report.

10 Prior to asserting or declining CWA jurisdiction based solely on this category, Corps Districts will elevate the action to Corps and EPA HQ for review consistent with the process described in the Corps/EPA Memorandum Regarding CWA Act Jurisdiction Following Rapanos. Office does not concur with data sheets/delineation report.

Data sheets prepared by the Corps:

Corps navigable waters' study:

U.S. Geological Survey Hydrologic Atlas:

USGS NHD data.

USGS 8 and 12 digit HUC maps.

U.S. Geological Survey map(s). Cite scale & quad name: USGS Quad Map prepared by E Co Consultants, Inc. that has the Significant Nexus classification determinations overlaid..

USDA Natural Resources Conservation Service Soil Survey. Citation:

National wetlands inventory map(s). Cite name:

State/Local wetland inventory map(s):

FEMA/FIRM maps:

100-year Floodplain Elevation is: (National Geodectic Vertical Datum of 1929)

Photographs: Aerial (Name & Date):

Or Other (Name & Date):

Previous determination(s). File no. and date of response letter:

Applicable/supporting case law:

Applicable/supporting scientific literature:

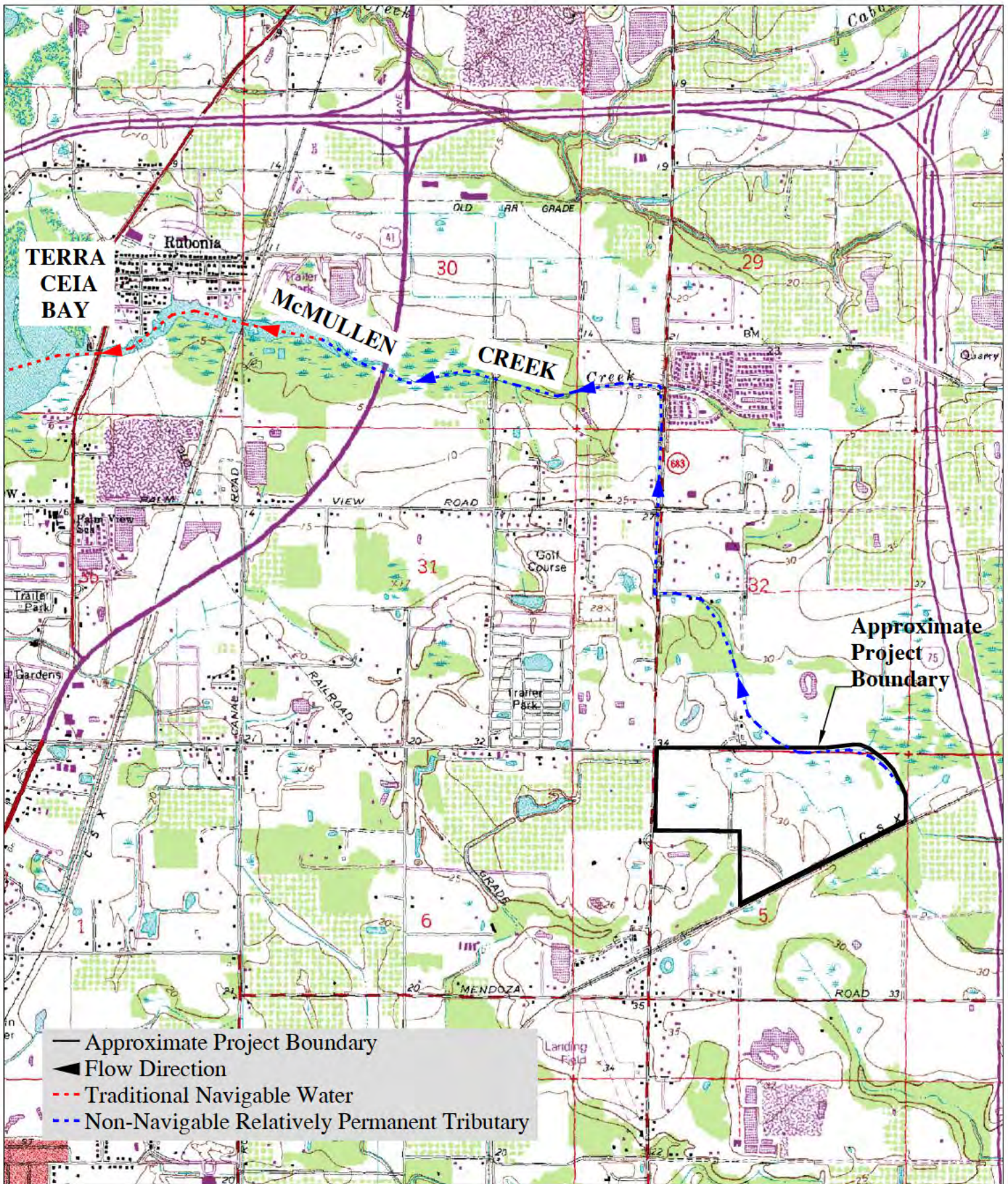
Other information (please specify):

B. ADDITIONAL COMMENTS TO SUPPORT JD:

Willow Walk - ACOE Jurisdictional Determination, Linear Distance, Acreage, and Classification Table

ID		Linear ft	Acreage	ACOE Classification
OWUS-A	OWUS	3786.6	0.65	Non-RPW
OWUS-B	OWUS	2706.5	0.47	Non-RPW
OWUS-C	OWUS	2447.0	0.37	Non-RPW
OWUS-D	OWUS	728.3	0.13	Non-RPW
OWUS-E	-	1668.0	0.24	Non-jurisdictional Ditch
OWUS-F1	-	230.2	0.04	Non-jurisdictional Ditch
OWUS-F2	OWUS	281.3	0.05	Non-RPW
OWUS-G1	OWUS	176.5	0.03	Non-RPW
OWUS-G2	-	589.9	0.10	Non-jurisdictional Ditch
OWUS-G3	-	171.0	0.02	Non-jurisdictional Ditch
OWUS-H	OWUS	621.4	0.07	Non-RPW
OWUS-I	OWUS	1094.1	0.19	Non-RPW
OWUS-J	OWUS	1412.1	0.18	Non-RPW
OWUS-K	-	349.6	0.08	Non-jurisdictional Ditch
OWUS-L1	-	135.0	0.02	Non-jurisdictional Ditch
OWUS-L2	-	314.4	0.05	Non-jurisdictional Ditch
OWUS-O	OWUS	3411.5	0.55	RPW
W-A	Wetland	-	0.46	Isolated, Non-jurisdictional Wetland
W-AA	Wetland	-	0.82	Wetland Abutting RPW
W-BB1	Wetland	-	2.33	Wetland Abutting RPW
W-BB2	Wetland	-	0.27	Isolated, Non-jurisdictional Wetland
W-BB3	Wetland	-	0.02	Isolated, Non-jurisdictional Wetland
W-C	Wetland	-	0.08	Wetland Abutting Non-RPW
W-E	Wetland	-	0.60	Wetland Abutting RPW
W-E2	Wetland	-	0.11	Isolated, Non-jurisdictional Wetland
W-G	Wetland	-	0.20	Isolated, Non-jurisdictional Wetland
W-H	Wetland	-	0.53	Isolated, Non-jurisdictional Wetland
W-Q	Wetland	-	3.75	Wetland Abutting Non-RPW
W-R	Wetland	-	6.69	Wetland Abutting Non-RPW
W-V	Wetland	-	0.82	Wetland Abutting Non-RPW
W-X	Wetland	-	3.06	Wetland Abutting Non-RPW

	Acreage		Acreage
Isolated Wetlands	1.59	OWUS	2.69
ACOE Wetlands	18.14	Non-jurisdictional Ditches	0.55



**TERRA
CEIA
BAY**

**McMULLEN
CREEK**

**Approximate
Project
Boundary**

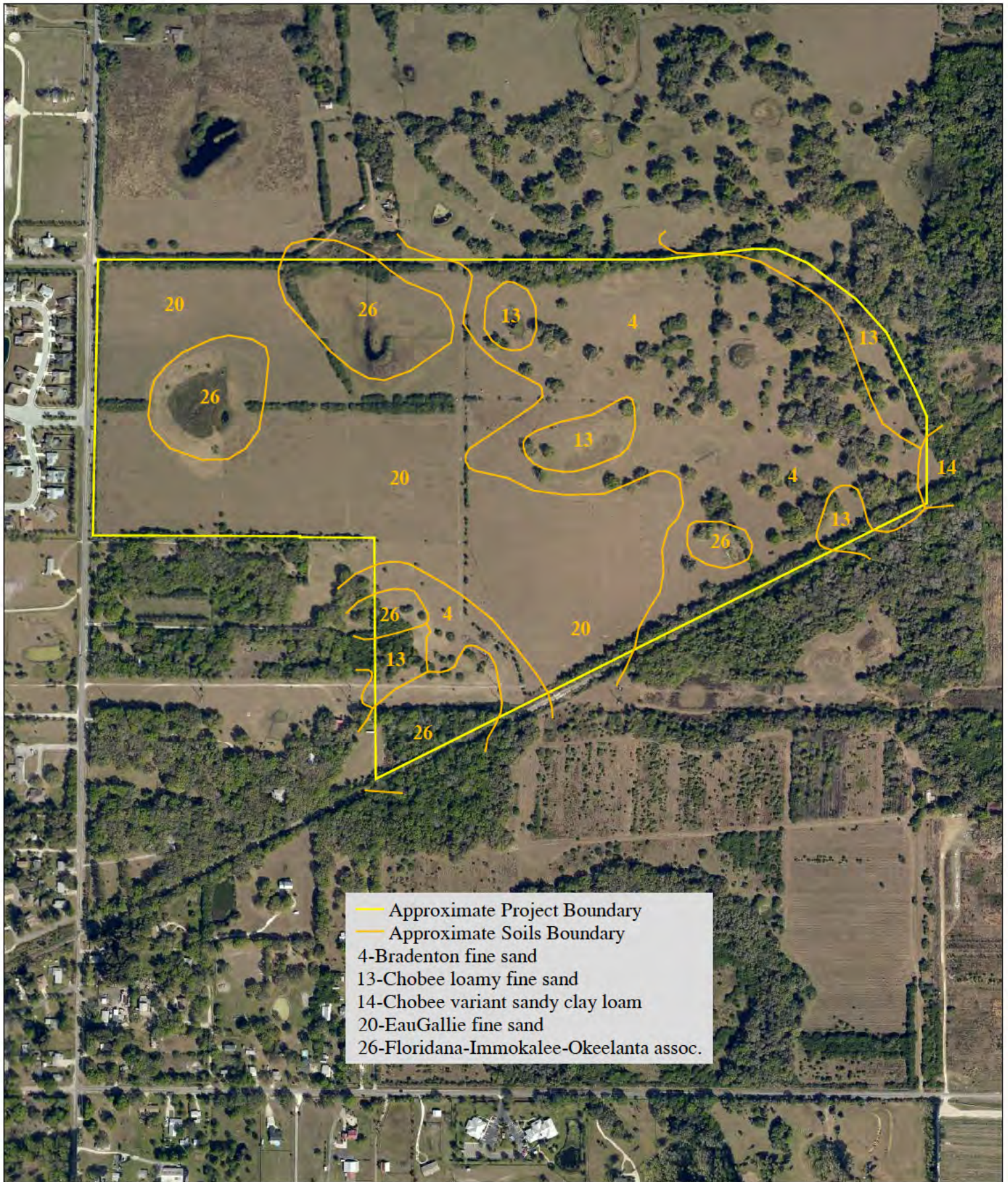
- Approximate Project Boundary
- ▲ Flow Direction
- - - Traditional Navigable Water
- - - Non-Navigable Relatively Permanent Tributary

Client: OK Willow Walk, LLC.
 Project: Willow Walk
 Title: USGS Topographic Map (Palmetto Quad)
 Date: December 22, 2014
 File: E:\Sarasota\Kolter Land Partners\Willow Walk\Ph INUSGS 122214.dwg

ECo
 CONSULTANTS INCORPORATED
 1523 8th Avenue West, Suite B, Palmetto, FL 34221
 Telephone 941.722.0901, Fax 941.722.4931
 P.O. Box 53106, Sarasota, FL 34234
 Telephone 941.388.0505, Fax 941.870.3245
 213 East Park Avenue, Lake Wales, FL 33853
 Telephone 863.676.8996, Fax 863.676.9897

Sec: 5 Twp: 34S Rng: 18E
 Scale: 1" = 2000'
 Date Drawn: 12/22/14
 Drawn by: CW

N
 Sheet:
 1 of 1



— Approximate Project Boundary
 — Approximate Soils Boundary
 4-Bradenton fine sand
 13-Chobee loamy fine sand
 14-Chobee variant sandy clay loam
 20-EauGallie fine sand
 26-Floridana-Immokalee-Okeelanta assoc.

Client: OK Willow Walk, LLC.

Project: Willow Walk

Title: Soils Map

Date: February 22, 2014

File: E:\Sarasota\Kolter Land Partners\Willow Walk\Ph II\Soils 122214.dwg

ECo
 CONSULTANTS INCORPORATED
 1523 8th Avenue West, Suite B, Palmetto, FL 34221
 Telephone 941.722.0901, Fax 941.722.4931
 P.O. Box 53106, Sarasota, FL 34234
 Telephone 941.388.0505, Fax 941.870.3245
 213 East Park Avenue, Lake Wales, FL 33853
 Telephone 863.676.8996, Fax 863.676.9897

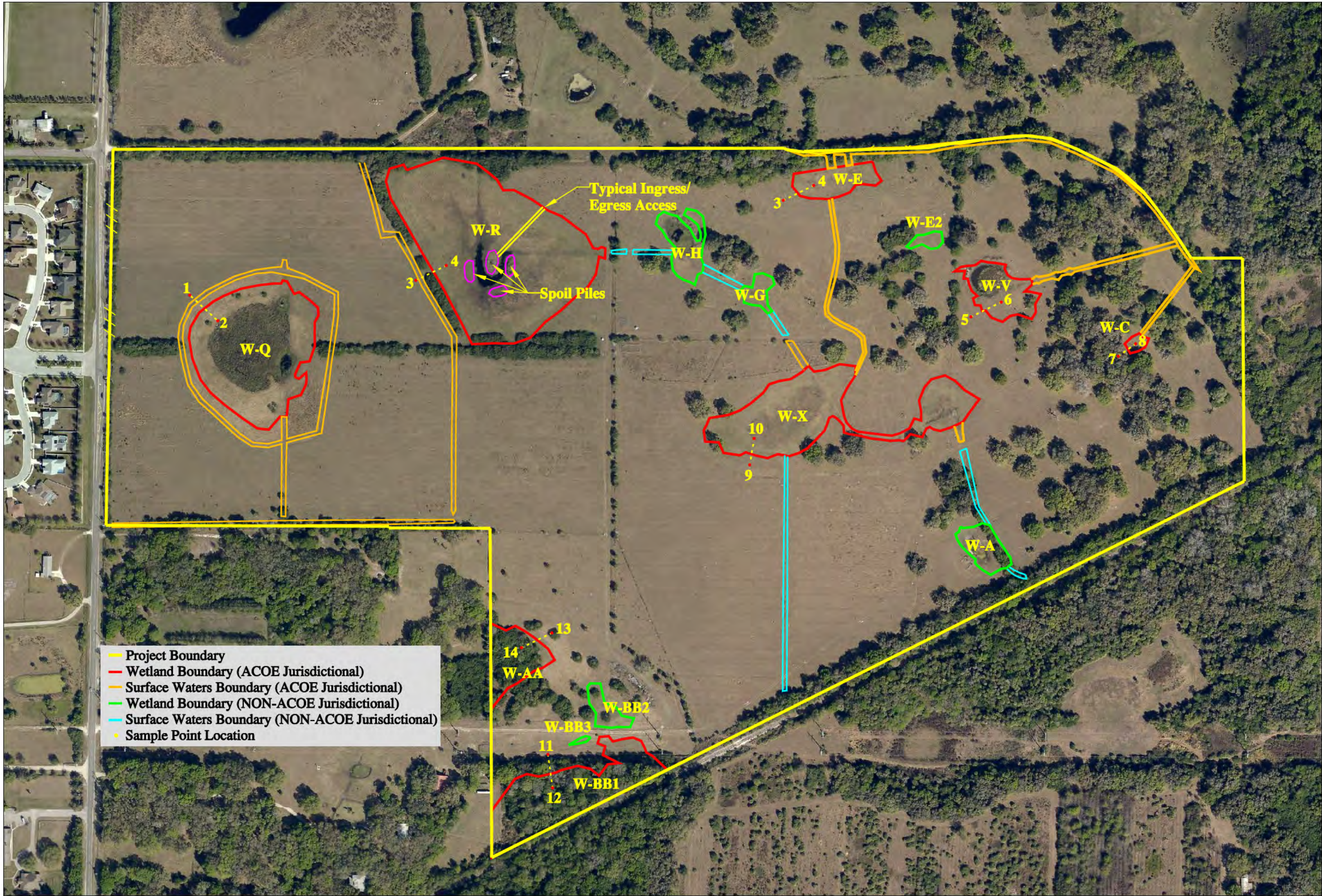
Sec: 5 **Twp:** 34S **Rng:** 18E

Scale: 1" = 600'

Date Drawn: 12/22/14

Drawn by: CW

Sheet:
 1 of 1



Client: OK Willow Walk, LLC.

Project: Willow Walk

Title: ACOE Sample Point Location Map

Date: December 11, 2014

File: E:\Sarasota\Koller Land Partners\Willow Walk\Prj\ACOE 121114.dwg



1523 8th Avenue West, Suite B, Palmetto, FL 34221 - Telephone 941.722.0901, Fax 941.722.4931
 P.O. Box 53106, Sarasota, FL 34234 - Telephone 941.388.0505, Fax 941.870.3245
 233 East Park Avenue, Suite 101, Lake Wales, FL 33853 - Telephone 863.676.8996, Fax 863.676.9897

Sec: 5 Twp: 34S Rng: 18E

Scale: 1" = 300'

Date Drawn: 12/11/14

Drawn by: CW



Sheet:
1 of 1