

APPROVED JURISDICTIONAL DETERMINATION FORM
U.S. Army Corps of Engineers

This form should be completed by following the instructions provided in Section IV of the JD Form Instructional Guidebook.

SECTION I – BACKGROUND INFORMATION:

- A. REPORT COMPLETION DATE FOR APPROVED JURISDICTIONAL DETERMINATION (JD): 17 February 2017
- B. DISTRICT OFFICE, FILE NAME, AND NUMBER: Jacksonville; Millennial School; SAJ-2011-02138
- C. PROJECT LOCATION AND BACKGROUND INFORMATION:

State: Florida County/parish/borough: Duval City: Jacksonville
Center coordinates of site (lat/long in degree decimal format) – Latitude: 30.248354° Longitude: -81.843876°
Name of nearest waterbody: McGirts Creek
Name of nearest Traditional Navigable Water (TNW): Ortega River
Name of watershed or Hydrologic Unit Code (HUC): Upper Ortega River (030801031401)
 Check if map/diagram of review area and/or potential jurisdictional areas is/are available upon request.
 Check if other sites (e.g., offsite mitigation sites, disposal sites, etc...) are associated with this action and are recorded on a different JD form.

- D. REVIEW PERFORMED FOR SITE EVALUATION (CHECK ALL THAT APPLY):

- Office (Desk) Determination Date: 17 February 2017
 Field Determination Date(s): 19 August 2011 (previous determination)

SECTION II – SUMMARY OF FINDINGS:

- A. RHA SECTION 10 DETERMINATION OF JURISDICTION.

There are no “*navigable waters of the U.S.*” within Rivers and Harbors Act (RHA) jurisdiction (as defined by 33 CFR part 329) in the review area. [Required]

- Waters subject to the ebb and flow of the tide
 Waters are presently used, have been used in the past, or may be susceptible for use to transport interstate or foreign commerce.
Explain:

- B. CWA SECTION 404 DETERMINATION OF JURISDICTION

There are no “*waters of the U.S.*” within Clean Water Act (CWA) jurisdiction (as defined by 33 CFR part 328) in the review area. [Required]

1. Waters of the U.S.

- a. Indicate presence of waters of U.S. in review area (check all that apply):¹

- TNWs, including territorial seas
 Wetlands adjacent to TNWs
 Relatively permanent waters² (RPWs) that flow directly or indirectly into TNWs
 Non-RPWs that flow directly or indirectly into TNWs
 Wetlands directly abutting RPWs that flow directly or indirectly into TNWs
 Wetlands adjacent to but not directly abutting RPWs that flow directly or indirectly into TNWs
 Wetlands adjacent to non-RPWs that flow directly or indirectly into TNWs
 Impoundments of jurisdictional waters
 Isolated (interstate or intrastate) waters, including isolated wetlands

- b. Identify (estimate) size of waters of the U.S. in the review area:

Non-wetland waters: N/A
Wetlands: 42 acres

- c. Limits (boundaries) of jurisdiction based on: 1987 Delineation Manual
Elevation of established OHWM (if known):

¹ Boxes checked below shall be supported by completing the appropriate sections in Section III below.

² For purposes of this form, an RPW is defined as a tributary that is not a TNW and that typically flows year-round or has continuous flow at least “seasonally” (e.g., typically 3 months).

2. Non-regulated waters/wetlands (check if applicable):³

Potentially jurisdictional waters and/or wetlands were assessed within the review area and determined to be not jurisdictional. Explain: The wetland encompassed by the project site lacks any direct hydrologic connection to downstream waters (Supreme Court decision, Solid Waste Agency of Northern Cook County v. U.S. Army Corps of Engineers, 531 U.S. 159 (2001)). That wetland extends offsite, slightly to the west and significantly to the east. The onsite portion of this system is approximately 1.8 acres in size. The eastern extension of this system appears to stretch to the southern edge of Samaritan Way and connects via culvert north of Samaritan Way (reference attached drawings). This wetland is ~40 acres in total size. However, ~20 acres of this wetland (north of Samaritan Way) has been preserved in conjunction with a previous Department of the Army permit.

SECTION III – CWA ANALYSIS:

A. TNWs AND WETLANDS ADJACENT TO TNWs

The agencies will assert jurisdiction over TNWs and wetlands adjacent to TNWs. If the aquatic resource is a TNW, complete Section III.A.1 and Section III.D.1. only; if the aquatic resource is a wetland adjacent to a TNW, complete Sections III.A.1 and 2 and Section III.D.1.; otherwise, see Section III.B below.

1. Identify TNW:

Summarize rationale supporting determination:

2. Wetland adjacent to TNW

Summarize rationale supporting conclusion that wetland is “adjacent”:

B. CHARACTERISTICS OF TRIBUTARY (THAT IS NOT A TNW) AND ITS ADJACENT WETLANDS (IF ANY):

This section summarizes information regarding characteristics of the tributary and its adjacent wetlands, if any, and it helps determine whether or not the standards for jurisdiction established under Rapanos have been met.

The agencies will assert jurisdiction over non-navigable tributaries of TNWs where the tributaries are “relatively permanent waters” (RPWs), i.e. tributaries that typically flow year-round or have continuous flow at least seasonally (e.g., typically 3 months). A wetland that directly abuts an RPW is also jurisdictional. If the aquatic resource is not a TNW, but has year-round (perennial) flow, skip to Section III.D.2. If the aquatic resource is a wetland directly abutting a tributary with perennial flow, skip to Section III.D.4.

A wetland that is adjacent to but that does not directly abut an RPW requires a significant nexus evaluation. Corps districts and EPA regions will include in the record any available information that documents the existence of a significant nexus between a relatively permanent tributary that is not perennial (and its adjacent wetlands if any) and a traditional navigable water, even though a significant nexus finding is not required as a matter of law.

If the waterbody⁴ is not an RPW, or a wetland directly abutting an RPW, a JD will require additional data to determine if the waterbody has a significant nexus with a TNW. If the tributary has adjacent wetlands, the significant nexus evaluation must consider the tributary in combination with all of its adjacent wetlands. This significant nexus evaluation that combines, for analytical purposes, the tributary and all of its adjacent wetlands is used whether the review area identified in the JD request is the tributary, or its adjacent wetlands, or both. If the JD covers a tributary with adjacent wetlands, complete Section III.B.1 for the tributary, Section III.B.2 for any onsite wetlands, and Section III.B.3 for all wetlands adjacent to that tributary, both onsite and offsite. The determination whether a significant nexus exists is determined in Section III.C below.

1. Characteristics of non-TNWs that flow directly or indirectly into TNW

(i) General Area Conditions:

Watershed size:

Drainage area:

Average annual rainfall:

Average annual snowfall:

(ii) Physical Characteristics:

(a) Relationship with TNW:

Tributary flows directly into TNW.

Tributary flows through tributaries before entering TNW.

³ Supporting documentation is presented in Section III.F.

⁴ Note that the Instructional Guidebook contains additional information regarding swales, ditches, washes, and erosional features generally and in the arid West.

Project waters are Pick List river miles from TNW.
 Project waters are Pick List river miles from RPW.
 Project waters are Pick List aerial (straight) miles from TNW.
 Project waters are Pick List aerial (straight) miles from RPW.
 Project waters cross or serve as state boundaries. Explain:

Identify flow route to TNW⁵:
 Tributary stream order, if known: .

(b) General Tributary Characteristics (check all that apply):

Tributary is: Natural
 Artificial (man-made). Explain:
 Manipulated (man-altered). Explain:

Tributary properties with respect to top of bank (estimate):

Average width: feet
 Average depth: feet
 Average side slopes: Pick List.

Primary tributary substrate composition (check all that apply):

Silts Sands Concrete
 Cobbles Gravel Muck
 Bedrock Vegetation Type/% cover:
 Other – Explain:

Tributary condition/stability [e.g., highly eroding, sloughing banks]. Explain:

Presence of run/riffle/pool complexes. Explain:

Tributary geometry: Pick List

Tributary gradient (approximate average slope): %

(c) Flow:

Tributary provides for: Pick List

Estimate average number of flow events in review area/year: Pick List

Describe flow regime: .

Other information on duration and volume:

Surface flow is: Pick List. Characteristics:

Subsurface flow: Pick List. Explain findings:

Dye (or other) test performed:

Tributary has (check all that apply):

Bed and banks
 OHWM⁶ (check all indicators that apply):
 clear, natural line impressed on the bank the presence of litter and debris
 changes in the character of soil destruction of terrestrial vegetation
 shelving the presence of wrack line
 vegetation matted down, bent, or absent sediment sorting
 leaf litter disturbed or washed away scour
 sediment deposition multiple observed or predicted flow events
 water staining abrupt change in plant community
 other (list):
 Discontinuous OHWM.⁷ Explain:

If factors other than the OHWM were used to determine lateral extent of CWA jurisdiction (check all that apply):

High Tide Line indicated by: Mean High Water Mark indicated by:
 oil or scum line along shore objects survey to available datum;
 fine shell or debris deposits (foreshore) physical markings;
 physical markings/characteristics vegetation lines/changes in vegetation types.
 tidal gauges
 other (list):

⁵ Flow route can be described by identifying, e.g., tributary a, which flows through the review area, to flow into tributary b, which then flows into TNW.

⁶A natural or man-made discontinuity in the OHWM does not necessarily sever jurisdiction (e.g., where the stream temporarily flows underground, or where the OHWM has been removed by development or agricultural practices). Where there is a break in the OHWM that is unrelated to the waterbody's flow regime (e.g., flow over a rock outcrop or through a culvert), the agencies will look for indicators of flow above and below the break.

⁷Ibid.

(iii) Chemical Characteristics:

Characterize tributary (e.g., water color is clear, discolored, oily film; water quality; general watershed characteristics, etc.).

Explain:

Identify specific pollutants, if known:

(iv) Biological Characteristics. Channel supports (check all that apply):

- Riparian corridor. Characteristics (type, average width):
- Wetland fringe. Characteristics:
- Habitat for:
 - Federally Listed species. Explain findings:
 - Fish/spawn areas. Explain findings:
 - Other environmentally-sensitive species. Explain findings:
 - Aquatic/wildlife diversity. Explain findings:

2. Characteristics of wetlands adjacent to non-TNW that flow directly or indirectly into TNW

(i) Physical Characteristics:

(a) General Wetland Characteristics:

Properties:

Wetland size: acres

Wetland type. Explain:

Wetland quality. Explain:

Project wetlands cross or serve as state boundaries. Explain: .

(b) General Flow Relationship with Non-TNW:

Flow is: Pick List. Explain:

Surface flow is: Pick List

Characteristics:

Subsurface flow: Pick List. Explain findings:

Dye (or other) test performed:

(c) Wetland Adjacency Determination with Non-TNW:

- Directly abutting
- Not directly abutting
 - Discrete wetland hydrologic connection. Explain:
 - Ecological connection. Explain:
 - Separated by berm/barrier. Explain:

(d) Proximity (Relationship) to TNW

Project wetlands are Pick List river miles from TNW.

Project waters are Pick List aerial (straight) miles from TNW.

Flow is from: Pick List.

Estimate approximate location of wetland as within the Pick List floodplain.

(ii) Chemical Characteristics:

Characterize wetland system (e.g., water color is clear, brown, oil film on surface; water quality; general watershed characteristics; etc.). Explain:

Identify specific pollutants, if known:

(iii) Biological Characteristics. Wetland supports (check all that apply):

- Riparian buffer. Characteristics (type, average width):
- Vegetation type/percent cover. Explain:
- Habitat for:
 - Federally Listed species. Explain findings:
 - Fish/spawn areas. Explain findings:
 - Other environmentally-sensitive species. Explain findings:.
 - Aquatic/wildlife diversity. Explain findings:

3. Characteristics of all wetlands adjacent to the tributary (if any)

All wetland(s) being considered in the cumulative analysis: Pick List

Approximately () acres in total are being considered in the cumulative analysis.

For each wetland, specify the following:

Directly abuts? (Y/N) Size (in acres) Directly abuts? (Y/N) Size (in acres)

Summarize overall biological, chemical and physical functions being performed:

C. SIGNIFICANT NEXUS DETERMINATION

A significant nexus analysis will assess the flow characteristics and functions of the tributary itself and the functions performed by any wetlands adjacent to the tributary to determine if they significantly affect the chemical, physical, and biological integrity of a TNW. For each of the following situations, a significant nexus exists if the tributary, in combination with all of its adjacent wetlands, has more than a speculative or insubstantial effect on the chemical, physical, and/or biological integrity of a TNW. Considerations when evaluating significant nexus include, but are not limited to the volume, duration, and frequency of the flow of water in the tributary and its proximity to a TNW, and the functions performed by the tributary and all its adjacent wetlands. It is not appropriate to determine significant nexus based solely on any specific threshold of distance (e.g. between a tributary and its adjacent wetland or between a tributary and the TNW). Similarly, the fact an adjacent wetland lies within or outside of a floodplain is not solely determinative of significant nexus.

Draw connections between the features documented and the effects on the TNW, as identified in the *Rapanos* Guidance and discussed in the Instructional Guidebook. Factors to consider include, for example:

- Does the tributary, in combination with its adjacent wetlands (if any), have the capacity to carry pollutants or flood waters to TNWs, or to reduce the amount of pollutants or flood waters reaching a TNW?
- Does the tributary, in combination with its adjacent wetlands (if any), provide habitat and lifecycle support functions for fish and other species, such as feeding, nesting, spawning, or rearing young for species that are present in the TNW?
- Does the tributary, in combination with its adjacent wetlands (if any), have the capacity to transfer nutrients and organic carbon that support downstream foodwebs?
- Does the tributary, in combination with its adjacent wetlands (if any), have other relationships to the physical, chemical, or biological integrity of the TNW?

Note: the above list of considerations is not inclusive and other functions observed or known to occur should be documented below:

1. Significant nexus findings for non-RPW that has no adjacent wetlands and flows directly or indirectly into TNWs. Explain findings of presence or absence of significant nexus below, based on the tributary itself, then go to Section III.D:
2. Significant nexus findings for non-RPW and its adjacent wetlands, where the non-RPW flows directly or indirectly into TNWs. Explain findings of presence or absence of significant nexus below, based on the tributary in combination with all of its adjacent wetlands, then go to Section III.D:
3. Significant nexus findings for wetlands adjacent to an RPW but that do not directly abut the RPW. Explain findings of presence or absence of significant nexus below, based on the tributary in combination with all of its adjacent wetlands, then go to Section III.D:

D. DETERMINATIONS OF JURISDICTIONAL FINDINGS – THE SUBJECT WATERS/WETLANDS ARE (CHECK ALL THAT APPLY):

1. TNWs and Adjacent Wetlands. Check all that apply and provide size estimates in review area:

TNWs: linear feet width (ft), Or, acres

Wetlands adjacent to TNWs: acres

2. RPWs that flow directly or indirectly into TNWs.

Tributaries of TNWs where tributaries typically flow year-round are jurisdictional. Provide data and rationale indicating that tributary is perennial:

Tributaries of TNW where tributaries have continuous flow “seasonally” (e.g., typically three months each year) are jurisdictional. Data supporting this conclusion is provided at Section III.B. Provide rationale indicating that tributary flows seasonally:

Provide estimates for jurisdictional waters in the review area (check all that apply):

Tributary waters: linear feet width (ft)

Other non-wetland waters: acres

Identify type(s) of waters:

3. Non-RPWs⁸ that flow directly or indirectly into TNWs.
 Waterbody that is not a TNW or an RPW, but flows directly or indirectly into a TNW, and it has a significant nexus with a TNW is jurisdictional. Data supporting this conclusion is provided at Section III.C.

Provide estimates for jurisdictional waters within the review area (check all that apply):

- Tributary waters: linear feet width (ft)
 Other non-wetland waters: acres

Identify type(s) of waters:

4. Wetlands directly abutting an RPW that flow directly or indirectly into TNWs.
 Wetlands directly abut RPW and thus are jurisdictional as adjacent wetlands.
 Wetlands directly abutting an RPW where tributaries typically flow year-round. Provide data and rationale indicating that tributary is perennial in Section III.D.2, above. Provide rationale indicating that wetland is directly abutting an RPW:

 Wetlands directly abutting an RPW where tributaries typically flow "seasonally". Provide data indicating that tributary is seasonal in Section III.B and rationale in Section III.D.2, above. Provide rationale indicating that wetland is directly abutting an RPW:

Provide acreage estimates for jurisdictional wetlands in the review area: acres

5. Wetlands adjacent to but not directly abutting an RPW that flow directly or indirectly into TNWs.
 Wetlands that do not directly abut an RPW, but when considered in combination with the tributary to which they are adjacent and with similarly situated adjacent wetlands, have a significant nexus with a TNW are jurisdictional. Data supporting this conclusion is provided at Section III.C.

Provide acreage estimates for jurisdictional wetlands in the review area: acres

6. Wetlands adjacent to non-RPWs that flow directly or indirectly into TNWs.
 Wetlands adjacent to such waters, and have when considered in combination with the tributary to which they are adjacent and with similarly situated adjacent wetlands, have a significant nexus with a TNW are jurisdictional. Data supporting this conclusion is provided at Section III.C.

Provide estimates for jurisdictional wetlands in the review area: acres

7. Impoundments of jurisdictional waters.⁹
As a general rule, the impoundment of a jurisdictional tributary remains jurisdictional.
 Demonstrate that impoundment was created from "waters of the U.S.," or
 Demonstrate that water meets the criteria for one of the categories presented above (1-6), or
 Demonstrate that water is isolated with a nexus to commerce (see E below).

E. ISOLATED [INTERSTATE OR INTRA-STATE] WATERS, INCLUDING ISOLATED WETLANDS, THE USE, DEGRADATION OR DESTRUCTION OF WHICH COULD AFFECT INTERSTATE COMMERCE, INCLUDING ANY SUCH WATERS (CHECK ALL THAT APPLY):¹⁰

- which are or could be used by interstate or foreign travelers for recreational or other purposes.
 from which fish or shellfish are or could be taken and sold in interstate or foreign commerce.
 which are or could be used for industrial purposes by industries in interstate commerce.
 Interstate isolated waters. Explain:
 Other factors. Explain:

Identify water body and summarize rationale supporting determination:

Provide estimates for jurisdictional waters in the review area (check all that apply):

- Tributary waters: linear feet width (ft)
 Other non-wetland waters: acres
Identify type(s) of waters:
 Wetlands: acres

⁸See Footnote # 3.

⁹To complete the analysis refer to the key in Section III.D.6 of the Instructional Guidebook.

¹⁰Prior to asserting or declining CWA jurisdiction based solely on this category, Corps Districts will elevate the action to Corps and EPA HQ for review consistent with the process described in the Corps/EPA Memorandum Regarding CWA Act Jurisdiction Following Rapanos.

F. NON-JURISDICTIONAL WATERS, INCLUDING WETLANDS (CHECK ALL THAT APPLY):

- If potential wetlands were assessed within the review area, these areas did not meet the criteria in the 1987 Corps of Engineers Wetland Delineation Manual and/or appropriate Regional Supplements.
- Review area included isolated waters with no substantial nexus to interstate (or foreign) commerce.
 - Prior to the Jan 2001 Supreme Court decision in "SWANCC," the review area would have been regulated based solely on the "Migratory Bird Rule" (MBR).
- Waters do not meet the "Significant Nexus" standard, where such a finding is required for jurisdiction. Explain: .
- Other: (explain, if not covered above): .

Provide acreage estimates for non-jurisdictional waters in the review area, where the sole potential basis of jurisdiction is the MBR factors (i.e., presence of migratory birds, presence of endangered species, use of water for irrigated agriculture), using best professional judgment (check all that apply):

- Non-wetland waters (i.e., rivers, streams): linear feet width (ft)
- Lakes/ponds: acres
- Other non-wetland waters: acres. List type of aquatic resource:
- Wetlands: 42 acres Wetlands encompassed by the project site lack any direct hydrologic connection to downstream waters (SWANCC). The wetland encompassed by the project site extends offsite; slightly to the west and significantly to the east. The onsite portion of this system is approximately 1.8 acres. The eastern extension of this system appears to stretch to the southern edge of Samaritan Way and connects via culvert north of Samaritan Way (reference attached drawings). This wetland is ~40 acres in total size. However, ~20 acres of this wetland (north of Samaritan Way) has been preserved in conjunction with a previous Department of the Army permit.

Provide acreage estimates for non-jurisdictional waters in the review area that do not meet the "Significant Nexus" standard, where such a finding is required for jurisdiction (check all that apply):

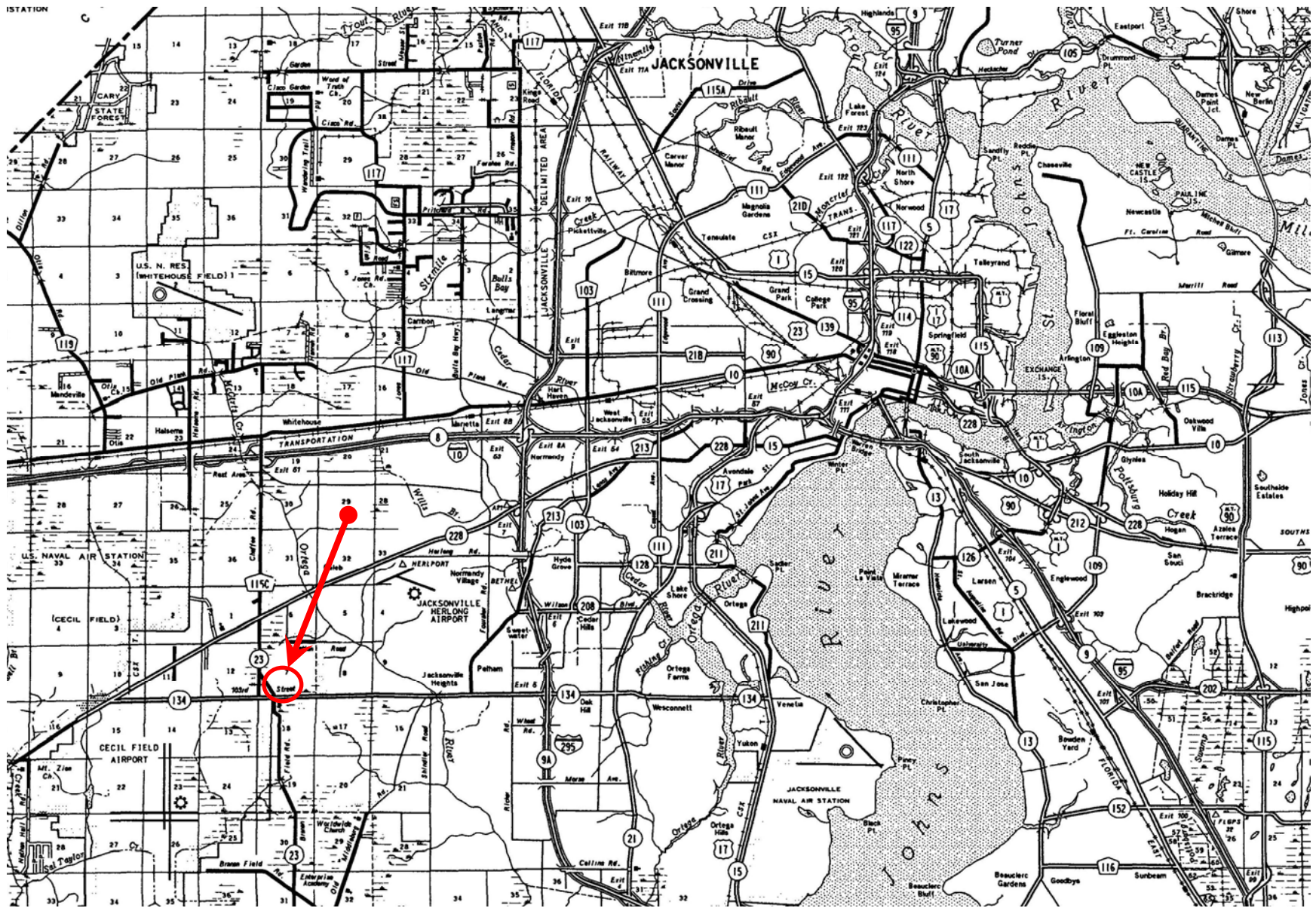
- Non-wetland waters (i.e., rivers, streams): linear feet, width (ft)
- Lakes/ponds: acres
- Other non-wetland waters: acres. List type of aquatic resource:
- Wetlands: acres

SECTION IV – DATA SOURCES:

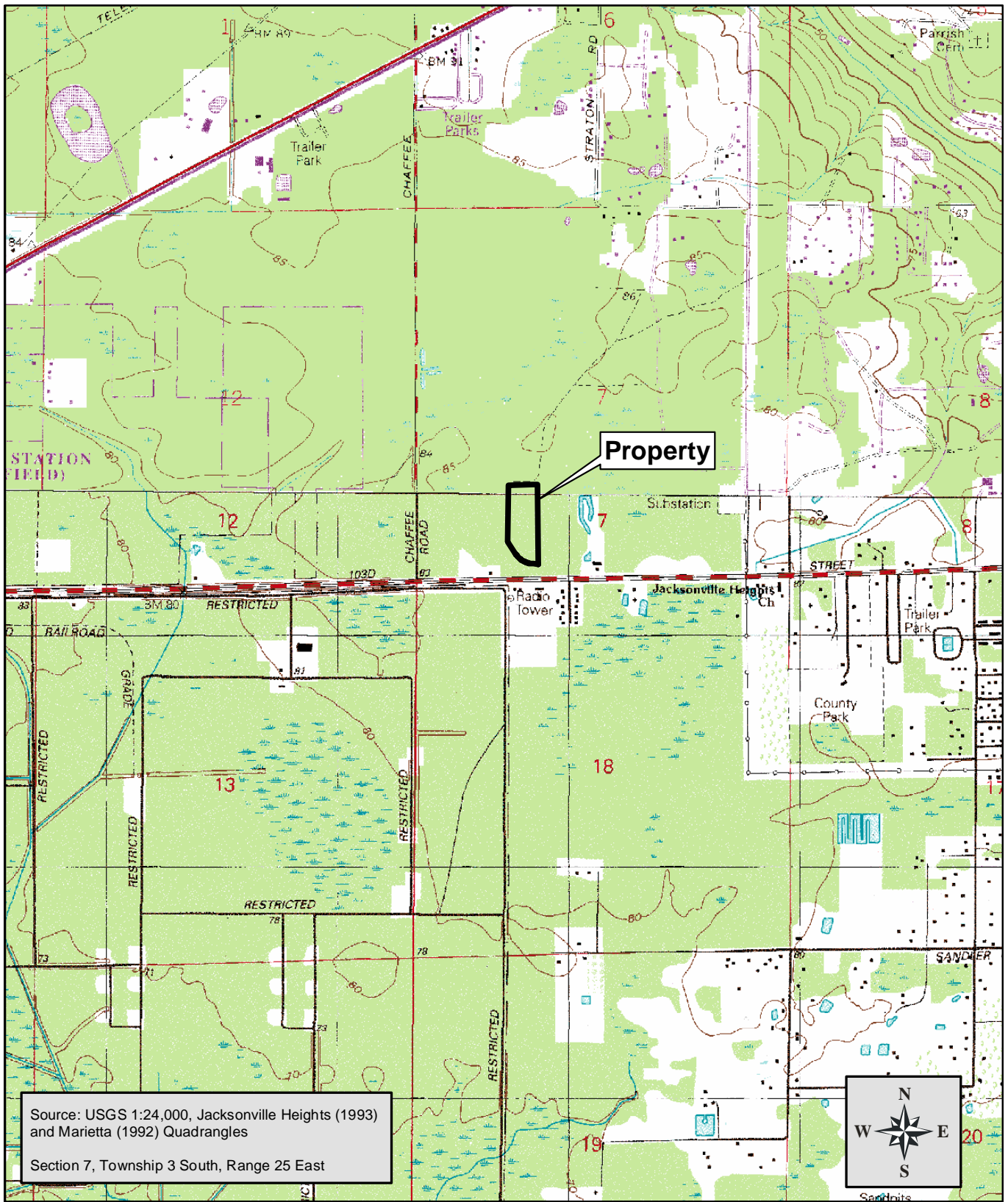
A. SUPPORTING DATA: Data reviewed for JD (check all that apply - checked items shall be included in case file and, where checked and requested, appropriately reference sources below):

- Maps, plans, plots or plat submitted by or on behalf of the applicant/consultant:
- Data sheets prepared/submitted by or on behalf of the applicant/consultant.
 - Office concurs with data sheets/delineation report.
 - Office does not concur with data sheets/delineation report.
- Data sheets prepared by the Corps:
- Corps navigable waters' study:
- U.S. Geological Survey Hydrologic Atlas:
 - USGS NHD data
 - USGS 8 and 12 digit HUC maps
- U.S. Geological Survey map(s)
- USDA Natural Resources Conservation Service Soil Survey
- National wetlands inventory map(s)
- State/Local wetland inventory map(s):
- FEMA/FIRM maps:
- 100-year Floodplain Elevation
- Photographs: Aerial (Name & Date): GoogleEarth®; Historic Aerials (reference attached documents)
or Other (Name & Date):
- Previous determination(s): SAJ-2011-02138; 19 September 2011
- Applicable/supporting case law:
- Applicable/supporting scientific literature:
- Other information (please specify):

B. ADDITIONAL COMMENTS TO SUPPORT JD: **This action is a re-verification of a previous SWANCC determination.** Two Department of the Army permits for projects north of Samaritan Way; and, one Department of the Army permit for a project contiguous to the west side of Samaritan Way at 103rd Street depict a lack of hydrologic connection between the system that is encompassed by the project site and any downstream system. The system encompassed by the project site is essentially surrounded by approved development (roadways, residential subdivision, commercial, and a school). There is no direct or indirect hydrologic connection to downstream waters.



GENERAL SITE LOCATION



Source: USGS 1:24,000, Jacksonville Heights (1993) and Marietta (1992) Quadrangles
 Section 7, Township 3 South, Range 25 East



PEACOCK CONSULTING GROUP, LLC



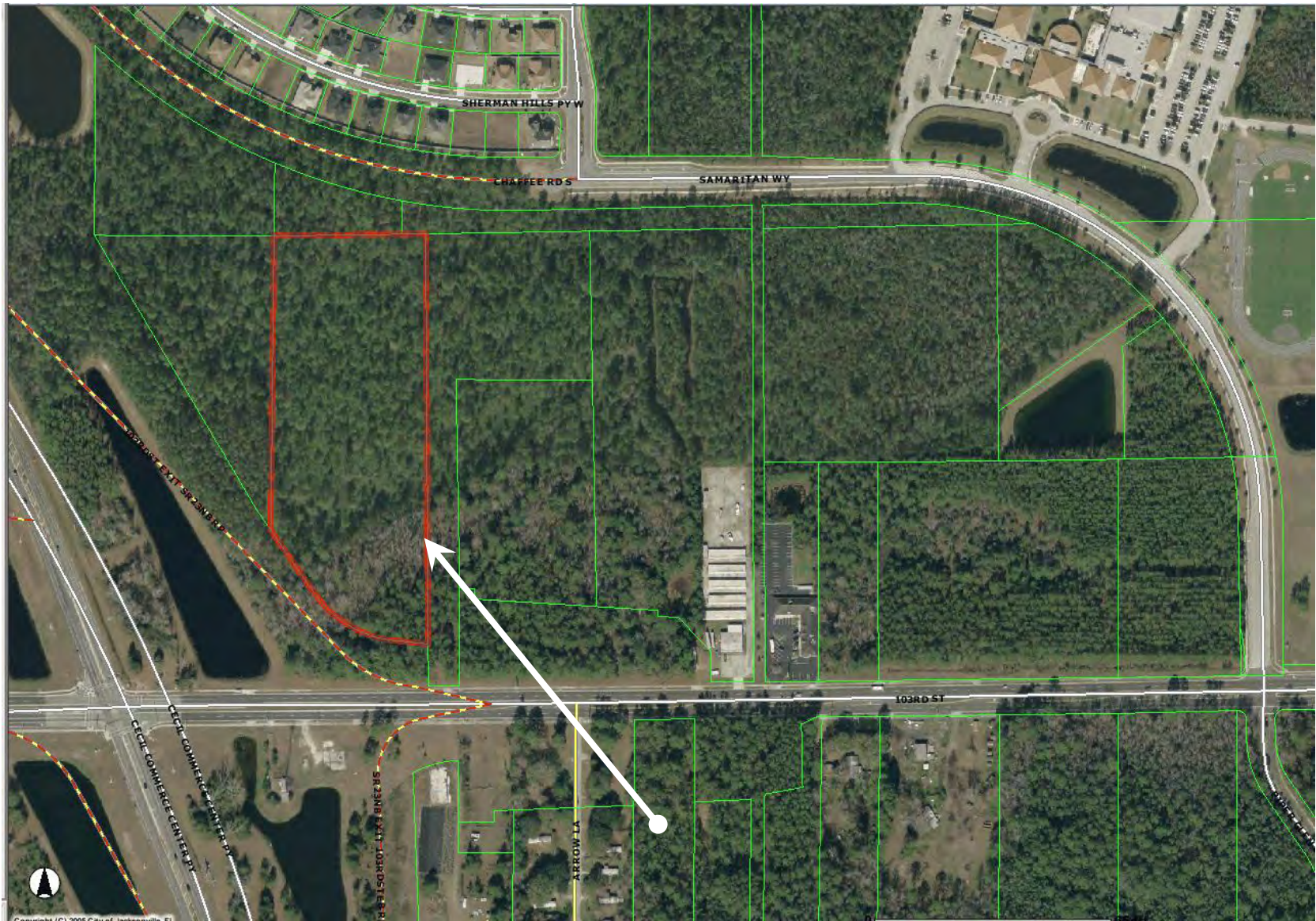
12058 San Jose Boulevard, Suite 604, Jacksonville, Florida 32223
 (904) 268-1766 phone (904) 268-1729 fax

Millennial School
 Duval County, Florida
Location/Topographic Map

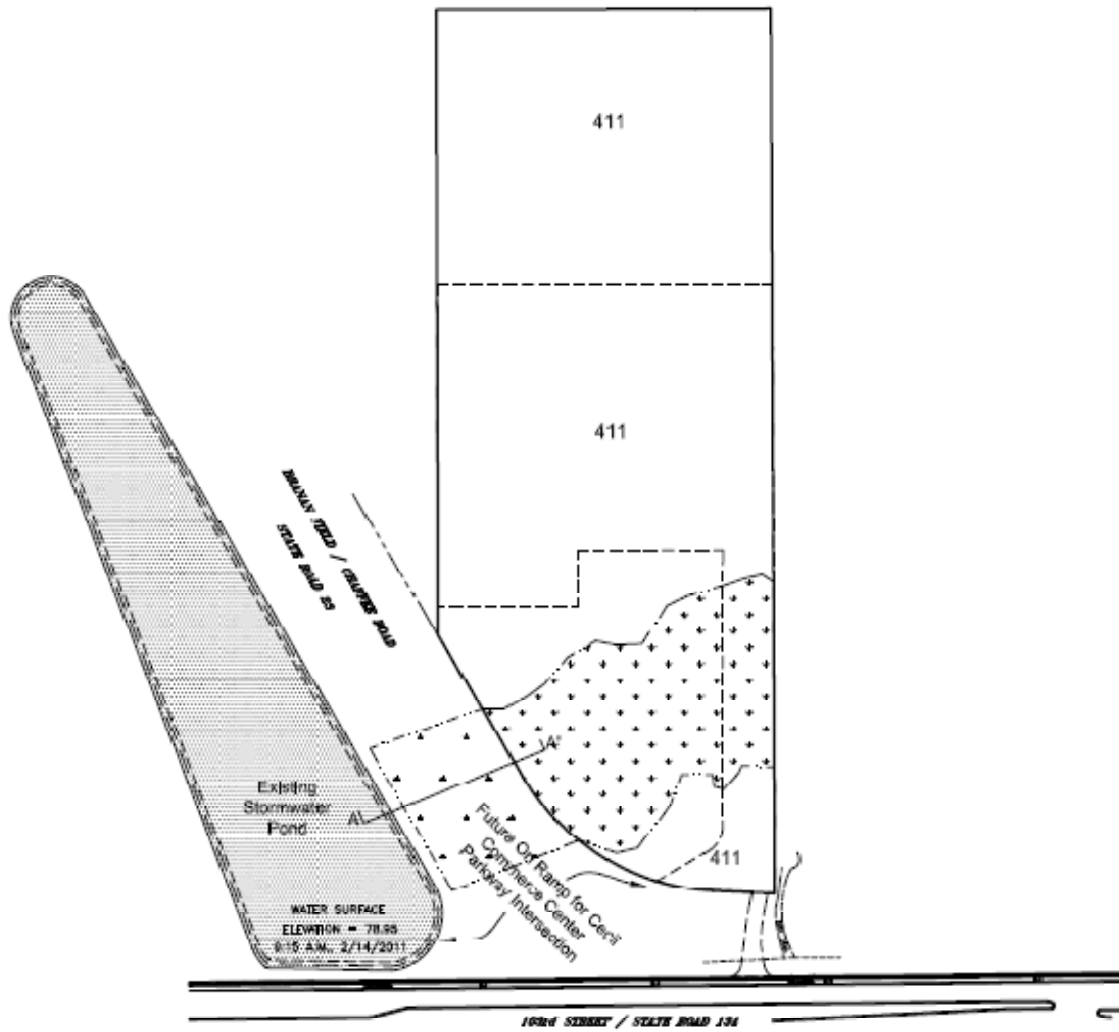
Figure: 1
 Scale: 1"=2000'
 Date: January 2011



Site Location on Google Earth with National Wetland Inventory Map Overlay



Project Site (Duval County Property Appraiser Office Map)




Legend:

—	- Project Boundary	-----	- Phase 1 Boundary
-----	- Wetland Line		

Uplands:

411 - Pine Flatwoods (FLUCFCS 411)	8.87 ac.±
------------------------------------	-------	-----------

Wetlands:

 - Wetland Forested Mixed (FLUCFCS 630)	1.85 ac.±
--	-------	-----------

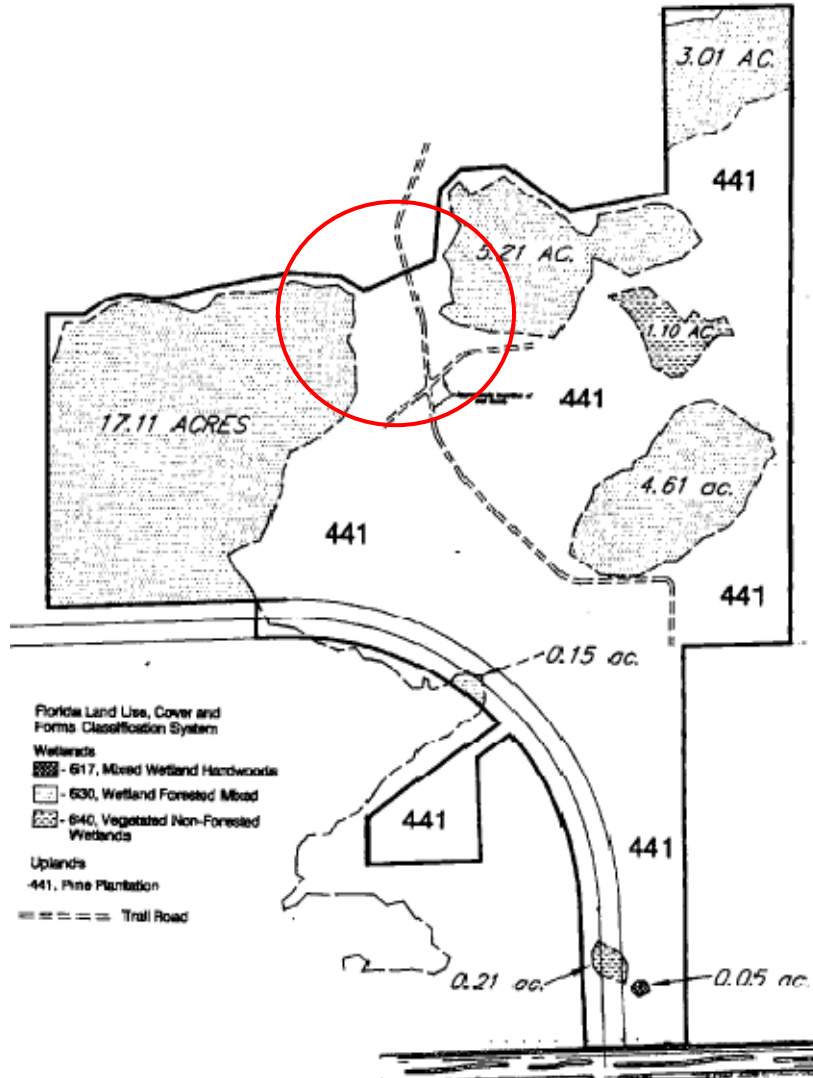
Total: 10.72 ac.±

Site Conditions

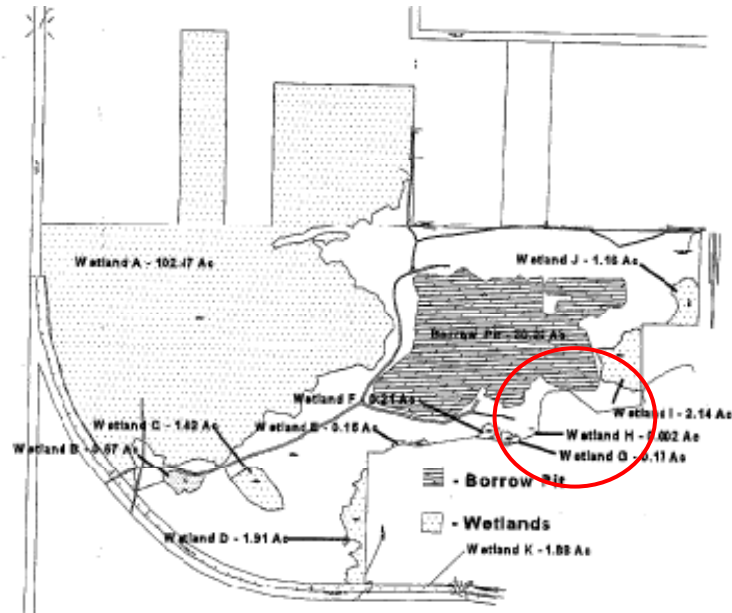




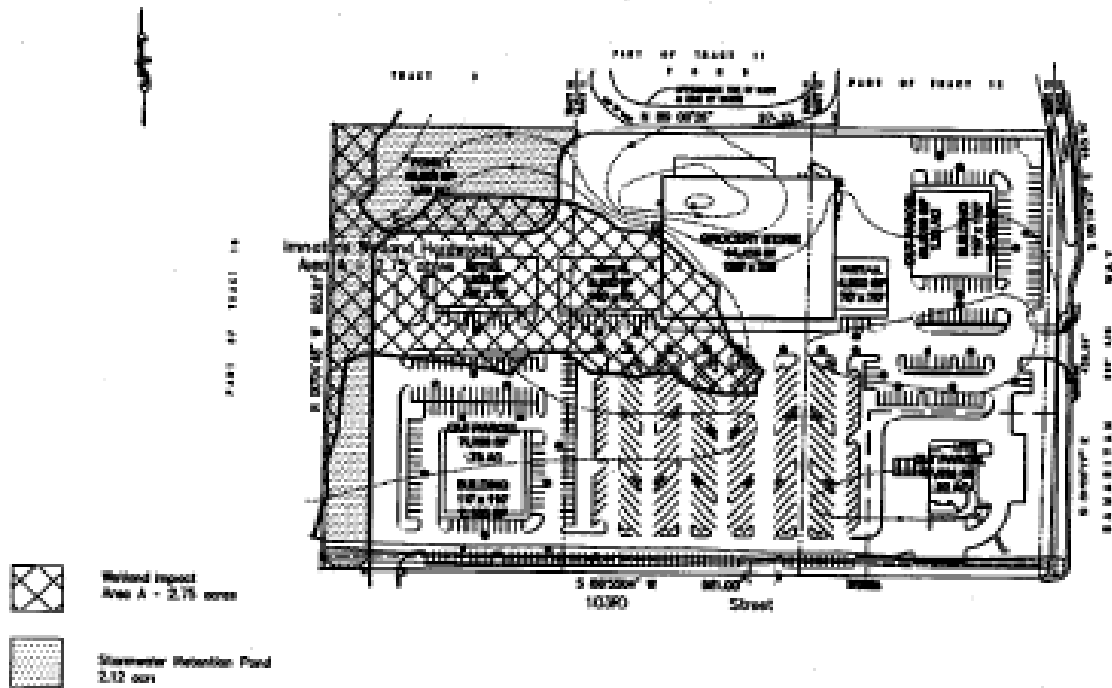
Composite Marietta SW and Jacksonville Heights NW
1995 Infrared DOQQs
(with approximate site location)



A depiction of the jurisdictional delineation of the property north of Samaritan Way, which shows the break between wetland systems; and, therefore, a lack of direct hydrologic connection to downstream waters.



A depiction of the jurisdictional delineation of the property north of Samaritan Way (west of the property on the previous page), which also shows the break between wetland systems; and, therefore, a lack of direct hydrologic connection to downstream waters.



A depiction of the work authorized on the property east of the project site (at the intersection of Samaritan Way and 103rd Street), which depicts a lack of hydrologic connection from the system extending to the project site and any system east of Samaritan Way.

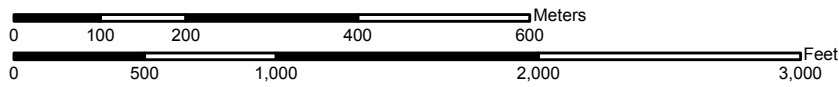
Soil Map—Duval County, Florida



81° 51' 3"



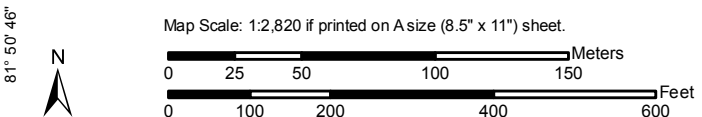
Map Scale: 1:9,120 if printed on A size (8.5" x 11") sheet.



Map Unit Legend

Duval County, Florida (FL031)			
Map Unit Symbol	Map Unit Name	Acres in AOI	Percent of AOI
14	Boulogne fine sand, 0 to 2 percent slopes	69.6	18.8%
22	Evergreen-Wesconnett complex, depressional, 0 to 2 percent slopes	76.2	20.6%
32	Leon fine sand, 0 to 2 percent slopes	187.4	50.6%
35	Lynn Haven fine sand, 0 to 2 percent slopes	20.8	5.6%
49	Pamlico muck, depressional, 0 to 1 percent slopes	3.5	0.9%
58	Pottsburg fine sand, high, 0 to 3 percent slopes	12.9	3.5%
Totals for Area of Interest		370.3	100.0%

Soil Map—Duval County, Florida



Map Unit Legend

Duval County, Florida (FL031)			
Map Unit Symbol	Map Unit Name	Acres in AOI	Percent of AOI
14	Boulogne fine sand, 0 to 2 percent slopes	11.7	28.6%
22	Evergreen-Wesconnett complex, depressional, 0 to 2 percent slopes	0.6	1.5%
32	Leon fine sand, 0 to 2 percent slopes	28.5	70.0%
Totals for Area of Interest		40.8	100.0%