

APPROVED JURISDICTIONAL DETERMINATION FORM
U.S. Army Corps of Engineers

This form should be completed by following the instructions provided in Section IV of the JD Form Instructional Guidebook.

SECTION I: BACKGROUND INFORMATION

A. REPORT COMPLETION DATE FOR APPROVED JURISDICTIONAL DETERMINATION (JD): February 22, 2017

B. DISTRICT OFFICE, FILE NAME, AND NUMBER: Jacksonville District-Cocoa Permits Section, Savannah Landing, SAJ-2017-00256

C. PROJECT LOCATION AND BACKGROUND INFORMATION:

State: FL County/parish/borough: Brevard City: Merritt Island
Center coordinates of site (lat/long in degree decimal format): Lat. 24.418156° **N**, Long. -80.702691° **W**.
Universal Transverse Mercator:

Name of nearest waterbody: Sykes Creek

Name of nearest Traditional Navigable Water (TNW) into which the aquatic resource flows: Indian River

Name of watershed or Hydrologic Unit Code (HUC): Courtenay Quad

Check if map/diagram of review area and/or potential jurisdictional areas is/are available upon request.

Check if other sites (e.g., offsite mitigation sites, disposal sites, etc...) are associated with this action and are recorded on a different JD form.

D. REVIEW PERFORMED FOR SITE EVALUATION (CHECK ALL THAT APPLY):

Office (Desk) Determination. Date:

Field Determination. Date(s): February 8, 2017

SECTION II: SUMMARY OF FINDINGS

A. RHA SECTION 10 DETERMINATION OF JURISDICTION.

There **Are no** "navigable waters of the U.S." within Rivers and Harbors Act (RHA) jurisdiction (as defined by 33 CFR part 329) in the review area. [Required]

Waters subject to the ebb and flow of the tide.

Waters are presently used, or have been used in the past, or may be susceptible for use to transport interstate or foreign commerce.
Explain: .

B. CWA SECTION 404 DETERMINATION OF JURISDICTION.

There **Are** "waters of the U.S." within Clean Water Act (CWA) jurisdiction (as defined by 33 CFR part 328) in the review area. [Required]

1. Waters of the U.S.

a. Indicate presence of waters of U.S. in review area (check all that apply):¹

- TNWs, including territorial seas
- Wetlands adjacent to TNWs
- Relatively permanent waters² (RPWs) that flow directly or indirectly into TNWs
- Non-RPWs that flow directly or indirectly into TNWs
- Wetlands directly abutting RPWs that flow directly or indirectly into TNWs
- Wetlands adjacent to but not directly abutting RPWs that flow directly or indirectly into TNWs
- Wetlands adjacent to non-RPWs that flow directly or indirectly into TNWs
- Impoundments of jurisdictional waters
- Isolated (interstate or intrastate) waters, including isolated wetlands

b. Identify (estimate) size of waters of the U.S. in the review area:

Non-wetland waters: linear feet: width (ft) and/or acres.

Wetlands: 0.34 acres.

c. Limits (boundaries) of jurisdiction based on: 1987 Delineation Manual

Elevation of established OHWM (if known): 5.65 NAVD.

2. Non-regulated waters/wetlands (check if applicable):³

- Potentially jurisdictional waters and/or wetlands were assessed within the review area and determined to be not jurisdictional.
Explain: 5.966 acres of irrigation/drainage surface waters (ditches with intermittent flow). See additional comments under section F of this determination.

¹ Boxes checked below shall be supported by completing the appropriate sections in Section III below.

² For purposes of this form, an RPW is defined as a tributary that is not a TNW and that typically flows year-round or has continuous flow at least "seasonally" (e.g., typically 3 months).

³ Supporting documentation is presented in Section III.F.

SECTION III: CWA ANALYSIS

A. TNWs AND WETLANDS ADJACENT TO TNWs

The agencies will assert jurisdiction over TNWs and wetlands adjacent to TNWs. If the aquatic resource is a TNW, complete Section III.A.1 and Section III.D.1. only; if the aquatic resource is a wetland adjacent to a TNW, complete Sections III.A.1 and 2 and Section III.D.1.; otherwise, see Section III.B below.

1. TNW

Identify TNW: .

Summarize rationale supporting determination: .

2. Wetland adjacent to TNW

Summarize rationale supporting conclusion that wetland is “adjacent”:

B. CHARACTERISTICS OF TRIBUTARY (THAT IS NOT A TNW) AND ITS ADJACENT WETLANDS (IF ANY):

This section summarizes information regarding characteristics of the tributary and its adjacent wetlands, if any, and it helps determine whether or not the standards for jurisdiction established under *Rapanos* have been met.

The agencies will assert jurisdiction over non-navigable tributaries of TNWs where the tributaries are “relatively permanent waters” (RPWs), i.e. tributaries that typically flow year-round or have continuous flow at least seasonally (e.g., typically 3 months). A wetland that directly abuts an RPW is also jurisdictional. If the aquatic resource is not a TNW, but has year-round (perennial) flow, skip to Section III.D.2. If the aquatic resource is a wetland directly abutting a tributary with perennial flow, skip to Section III.D.4.

A wetland that is adjacent to but that does not directly abut an RPW requires a significant nexus evaluation. Corps districts and EPA regions will include in the record any available information that documents the existence of a significant nexus between a relatively permanent tributary that is not perennial (and its adjacent wetlands if any) and a traditional navigable water, even though a significant nexus finding is not required as a matter of law.

If the waterbody⁴ is not an RPW, or a wetland directly abutting an RPW, a JD will require additional data to determine if the waterbody has a significant nexus with a TNW. If the tributary has adjacent wetlands, the significant nexus evaluation must consider the tributary in combination with all of its adjacent wetlands. This significant nexus evaluation that combines, for analytical purposes, the tributary and all of its adjacent wetlands is used whether the review area identified in the JD request is the tributary, or its adjacent wetlands, or both. If the JD covers a tributary with adjacent wetlands, complete Section III.B.1 for the tributary, Section III.B.2 for any onsite wetlands, and Section III.B.3 for all wetlands adjacent to that tributary, both onsite and offsite. The determination whether a significant nexus exists is determined in Section III.C below.

1. Characteristics of non-TNWs that flow directly or indirectly into TNW

(i) General Area Conditions:

Watershed size: acres

Drainage area: acres

Average annual rainfall: inches

Average annual snowfall: 0 inches

(ii) Physical Characteristics:

(a) Relationship with TNW:

Tributary flows directly into TNW.

Tributary flows through **Pick List** tributaries before entering TNW.

Project waters are **1-2** river miles from TNW.

Project waters are **1 (or less)** river miles from RPW.

Project waters are **1 (or less)** aerial (straight) miles from TNW.

Project waters are **1 (or less)** aerial (straight) miles from RPW.

Project waters cross or serve as state boundaries. Explain: .

Identify flow route to TNW⁵: Water from within wetland flows west into roadside drainage swale (RPW). Water then flows south 2700 feet on the east side of State Road (SR) 3 through connected roadside swales, pipes and an FDOT pond.

⁴ Note that the Instructional Guidebook contains additional information regarding swales, ditches, washes, and erosional features generally and in the arid West.

⁵ Flow route can be described by identifying, e.g., tributary a, which flows through the review area, to flow into tributary b, which then flows into TNW.

At the intersection of SR 3 and Smith Road, a pipe connects the south flowing water to an easterly flowing ditch. The ditch runs along the north side of Smith Road approximately 2700 feet and then empties into Sykes Creek. Sykes Creek then flows south to the Barge Canal, which empties to the Indian River (TNW).
 Tributary stream order, if known: .

(b) General Tributary Characteristics (check all that apply):

Tributary is: Natural
 Artificial (man-made). Explain: Roadside drainage swales constructed to direct stormwater runoff to Sykes Creek.
 Manipulated (man-altered). Explain: .

Tributary properties with respect to top of bank (estimate):

Average width: 6 feet
 Average depth: 1 feet
 Average side slopes: **2:1**.

Primary tributary substrate composition (check all that apply):

Silts Sands Concrete
 Cobbles Gravel Muck
 Bedrock Vegetation. Type/% cover: Cattails, pennywort, torpedo grass, wedelia, primrose willow, pickerel weed, Johnson's grass, St. Augustine grass with 85% cover
 Other. Explain: .

Tributary condition/stability [e.g., highly eroding, sloughing banks]. Explain: Moderate erosion in N/S run, heavier erosion in E/W run.

Presence of run/riffle/pool complexes. Explain: .

Tributary geometry: **Relatively straight**

Tributary gradient (approximate average slope): %

(c) Flow:

Tributary provides for: **Seasonal flow**

Estimate average number of flow events in review area/year: **6-10**

Describe flow regime: Slight flow during wet season with heavy flows during and after rain events. Reduced flow during dry season.

Other information on duration and volume: .

Surface flow is: **Discrete and confined**. Characteristics: Flow is within the top of banks of swales and ditch. Flow is contained within concrete pipes in various locations.

Subsurface flow: **Unknown**. Explain findings: .

Dye (or other) test performed: .

Tributary has (check all that apply):

Bed and banks
 OHWM⁶ (check all indicators that apply):
 clear, natural line impressed on the bank the presence of litter and debris
 changes in the character of soil destruction of terrestrial vegetation
 shelving the presence of wrack line
 vegetation matted down, bent, or absent sediment sorting
 leaf litter disturbed or washed away scour
 sediment deposition multiple observed or predicted flow events
 water staining abrupt change in plant community
 other (list):
 Discontinuous OHWM.⁷ Explain: Flow is confined to pipes in various locations.

If factors other than the OHWM were used to determine lateral extent of CWA jurisdiction (check all that apply):

High Tide Line indicated by: Mean High Water Mark indicated by:
 oil or scum line along shore objects survey to available datum;
 fine shell or debris deposits (foreshore) physical markings;
 physical markings/characteristics vegetation lines/changes in vegetation types.
 tidal gauges
 other (list):

⁶A natural or man-made discontinuity in the OHWM does not necessarily sever jurisdiction (e.g., where the stream temporarily flows underground, or where the OHWM has been removed by development or agricultural practices). Where there is a break in the OHWM that is unrelated to the waterbody's flow regime (e.g., flow over a rock outcrop or through a culvert), the agencies will look for indicators of flow above and below the break.

⁷Ibid.

(iii) Chemical Characteristics:

Characterize tributary (e.g., water color is clear, discolored, oily film; water quality; general watershed characteristics, etc.).

Explain: Water is runoff from SR3 right of way and adjacent commercial/industrial properties. Water is untreated and contains oil, gas and other hazzardous fluids from the roadway.

Identify specific pollutants, if known:

(iv) Biological Characteristics. Channel supports (check all that apply):

Riparian corridor. Characteristics (type, average width):

Wetland fringe. Characteristics: Freshwater Marsh.

Habitat for:

Federally Listed species. Explain findings: Potential for wood stork foraging.

Fish/spawn areas. Explain findings: The south flowing swale does not typically contain enough water for spawning.

The FDOT pond that is connected to the swale and the east flowing ditch provide sufficient water for spawning.

Other environmentally-sensitive species. Explain findings:

Aquatic/wildlife diversity. Explain findings:

2. Characteristics of wetlands adjacent to non-TNW that flow directly or indirectly into TNW

(i) Physical Characteristics:

(a) General Wetland Characteristics:

Properties:

Wetland size: acres

Wetland type. Explain:

Wetland quality. Explain:

Project wetlands cross or serve as state boundaries. Explain:

(b) General Flow Relationship with Non-TNW:

Flow is: **Pick List**. Explain:

Surface flow is: **Pick List**

Characteristics:

Subsurface flow: **Pick List**. Explain findings:

Dye (or other) test performed:

(c) Wetland Adjacency Determination with Non-TNW:

Directly abutting

Not directly abutting

Discrete wetland hydrologic connection. Explain:

Ecological connection. Explain:

Separated by berm/barrier. Explain:

(d) Proximity (Relationship) to TNW

Project wetlands are **Pick List** river miles from TNW.

Project waters are **Pick List** aerial (straight) miles from TNW.

Flow is from: **Pick List**.

Estimate approximate location of wetland as within the **Pick List** floodplain.

(ii) Chemical Characteristics:

Characterize wetland system (e.g., water color is clear, brown, oil film on surface; water quality; general watershed characteristics; etc.). Explain:

Identify specific pollutants, if known:

(iii) Biological Characteristics. Wetland supports (check all that apply):

Riparian buffer. Characteristics (type, average width):

Vegetation type/percent cover. Explain:

Habitat for:

Federally Listed species. Explain findings:

Fish/spawn areas. Explain findings:

Other environmentally-sensitive species. Explain findings:

Aquatic/wildlife diversity. Explain findings:

3. Characteristics of all wetlands adjacent to the tributary (if any)

All wetland(s) being considered in the cumulative analysis: **Pick List**

Approximately () acres in total are being considered in the cumulative analysis.

For each wetland, specify the following:

Directly abuts? (Y/N) Size (in acres) Directly abuts? (Y/N) Size (in acres)

Summarize overall biological, chemical and physical functions being performed:

C. SIGNIFICANT NEXUS DETERMINATION

A significant nexus analysis will assess the flow characteristics and functions of the tributary itself and the functions performed by any wetlands adjacent to the tributary to determine if they significantly affect the chemical, physical, and biological integrity of a TNW. For each of the following situations, a significant nexus exists if the tributary, in combination with all of its adjacent wetlands, has more than a speculative or insubstantial effect on the chemical, physical and/or biological integrity of a TNW. Considerations when evaluating significant nexus include, but are not limited to the volume, duration, and frequency of the flow of water in the tributary and its proximity to a TNW, and the functions performed by the tributary and all its adjacent wetlands. It is not appropriate to determine significant nexus based solely on any specific threshold of distance (e.g. between a tributary and its adjacent wetland or between a tributary and the TNW). Similarly, the fact an adjacent wetland lies within or outside of a floodplain is not solely determinative of significant nexus.

Draw connections between the features documented and the effects on the TNW, as identified in the *Rapanos* Guidance and discussed in the Instructional Guidebook. Factors to consider include, for example:

- Does the tributary, in combination with its adjacent wetlands (if any), have the capacity to carry pollutants or flood waters to TNWs, or to reduce the amount of pollutants or flood waters reaching a TNW?
- Does the tributary, in combination with its adjacent wetlands (if any), provide habitat and lifecycle support functions for fish and other species, such as feeding, nesting, spawning, or rearing young for species that are present in the TNW?
- Does the tributary, in combination with its adjacent wetlands (if any), have the capacity to transfer nutrients and organic carbon that support downstream foodwebs?
- Does the tributary, in combination with its adjacent wetlands (if any), have other relationships to the physical, chemical, or biological integrity of the TNW?

Note: the above list of considerations is not inclusive and other functions observed or known to occur should be documented below:

1. **Significant nexus findings for non-RPW that has no adjacent wetlands and flows directly or indirectly into TNWs.** Explain findings of presence or absence of significant nexus below, based on the tributary itself, then go to Section III.D:
2. **Significant nexus findings for non-RPW and its adjacent wetlands, where the non-RPW flows directly or indirectly into TNWs.** Explain findings of presence or absence of significant nexus below, based on the tributary in combination with all of its adjacent wetlands, then go to Section III.D:
3. **Significant nexus findings for wetlands adjacent to an RPW but that do not directly abut the RPW.** Explain findings of presence or absence of significant nexus below, based on the tributary in combination with all of its adjacent wetlands, then go to Section III.D: The subject wetlands include a 0.34 acre scrub-shrub palustrine wetland abutting a roadside tributary (RPW) which conveys water to Indian River. Indian River is a TNW. The tributary has the capacity to carry pollutants or flood waters to the TNW. The subject wetlands and the tributary also provide flood water storage and pollutant treatment prior to waters reaching the TNW. The subject wetlands and tributary have the capacity to provide habitat and lifecycle support to various amphibians and reptiles as well as foraging and nesting habitat for various avian species, all of which provides for higher level organisms in the food web including species downstream in the TNW. The tributary has the capacity to transfer nutrients and detritus downstream to the TNW further supporting the food web. These indicators show a significant level of interconnection between the subject wetlands, tributary (RPW), and TNW. Therefore, the subject wetlands and tributary (RPW) significantly contributes to the downstream TNW.

D. DETERMINATIONS OF JURISDICTIONAL FINDINGS. THE SUBJECT WATERS/WETLANDS ARE (CHECK ALL THAT APPLY):

1. **TNWs and Adjacent Wetlands.** Check all that apply and provide size estimates in review area:
 TNWs: linear feet width (ft), Or, acres.
 Wetlands adjacent to TNWs: acres.

2. **RPWs that flow directly or indirectly into TNWs.**

Tributaries of TNWs where tributaries typically flow year-round are jurisdictional. Provide data and rationale indicating that tributary is perennial: Slight flow during wet season with heavy flows during and after rain events. Reduced flow during dry season.

Tributaries of TNW where tributaries have continuous flow “seasonally” (e.g., typically three months each year) are jurisdictional. Data supporting this conclusion is provided at Section III.B. Provide rationale indicating that tributary flows seasonally:

Provide estimates for jurisdictional waters in the review area (check all that apply):

Tributary waters: **2700** linear feet **6** width (ft).

Other non-wetland waters: acres.

Identify type(s) of waters: .

3. **Non-RPWs⁸ that flow directly or indirectly into TNWs.**

Waterbody that is not a TNW or an RPW, but flows directly or indirectly into a TNW, and it has a significant nexus with a TNW is jurisdictional. Data supporting this conclusion is provided at Section III.C.

Provide estimates for jurisdictional waters within the review area (check all that apply):

Tributary waters: linear feet width (ft).

Other non-wetland waters: acres.

Identify type(s) of waters: .

4. **Wetlands directly abutting an RPW that flow directly or indirectly into TNWs.**

Wetlands directly abut RPW and thus are jurisdictional as adjacent wetlands.

Wetlands directly abutting an RPW where tributaries typically flow year-round. Provide data and rationale indicating that tributary is perennial in Section III.D.2, above. Provide rationale indicating that wetland is directly abutting an RPW: **Wetland 1 has a direct surface water flow connection to the roadside swale as there is not top of bank separating the two communities. The roadside swale contains vegetation that is submergent and requires water throughout the year.**

Wetlands directly abutting an RPW where tributaries typically flow “seasonally.” Provide data indicating that tributary is seasonal in Section III.B and rationale in Section III.D.2, above. Provide rationale indicating that wetland is directly abutting an RPW: .

Provide acreage estimates for jurisdictional wetlands in the review area: **0.34**acres.

5. **Wetlands adjacent to but not directly abutting an RPW that flow directly or indirectly into TNWs.**

Wetlands that do not directly abut an RPW, but when considered in combination with the tributary to which they are adjacent and with similarly situated adjacent wetlands, have a significant nexus with a TNW are jurisdictional. Data supporting this conclusion is provided at Section III.C.

Provide acreage estimates for jurisdictional wetlands in the review area: acres.

6. **Wetlands adjacent to non-RPWs that flow directly or indirectly into TNWs.**

Wetlands adjacent to such waters, and have when considered in combination with the tributary to which they are adjacent and with similarly situated adjacent wetlands, have a significant nexus with a TNW are jurisdictional. Data supporting this conclusion is provided at Section III.C.

Provide estimates for jurisdictional wetlands in the review area: acres.

7. **Impoundments of jurisdictional waters.⁹**

As a general rule, the impoundment of a jurisdictional tributary remains jurisdictional.

Demonstrate that impoundment was created from “waters of the U.S.,” or

Demonstrate that water meets the criteria for one of the categories presented above (1-6), or

Demonstrate that water is isolated with a nexus to commerce (see E below).

E. ISOLATED [INTERSTATE OR INTRA-STATE] WATERS, INCLUDING ISOLATED WETLANDS, THE USE, DEGRADATION OR DESTRUCTION OF WHICH COULD AFFECT INTERSTATE COMMERCE, INCLUDING ANY SUCH WATERS (CHECK ALL THAT APPLY):¹⁰

⁸See Footnote # 3.

⁹ To complete the analysis refer to the key in Section III.D.6 of the Instructional Guidebook.

- which are or could be used by interstate or foreign travelers for recreational or other purposes.
- from which fish or shellfish are or could be taken and sold in interstate or foreign commerce.
- which are or could be used for industrial purposes by industries in interstate commerce.
- Interstate isolated waters. Explain: _____
- Other factors. Explain: _____

Identify water body and summarize rationale supporting determination: _____

Provide estimates for jurisdictional waters in the review area (check all that apply):

- Tributary waters: _____ linear feet _____ width (ft).
- Other non-wetland waters: _____ acres.
Identify type(s) of waters: _____
- Wetlands: _____ acres.

F. NON-JURISDICTIONAL WATERS, INCLUDING WETLANDS (CHECK ALL THAT APPLY):

- If potential wetlands were assessed within the review area, these areas did not meet the criteria in the 1987 Corps of Engineers Wetland Delineation Manual and/or appropriate Regional Supplements.
- Review area included isolated waters with no substantial nexus to interstate (or foreign) commerce.
 - Prior to the Jan 2001 Supreme Court decision in "SWANCC," the review area would have been regulated based solely on the "Migratory Bird Rule" (MBR).
- Waters do not meet the "Significant Nexus" standard, where such a finding is required for jurisdiction. Explain: _____
- Other: (explain, if not covered above): **The subject surface waters include irrigation and drainage ditches excavated wholly in and draining only uplands and that do not carry a relatively permanent flow of water to a TNW. The 5.9 acres of on-site irrigation/drainage surface waters (ditches and ponds with intermittent flow) are separated from Sykes Creek by water management structures; a flowway drains east and south approximately 1 mile to the Indian River (TNW). The surface waters were created to support a citrus operation and are used to irrigate crops during the dry season. Conversely, they drain the agricultural site during the wet season. The network of ditches can range from flooded to intermittently wet. The surface waters are connected to a flow way east via a pump system; water cannot leave the site without being pumped. The surface waters within the review area do not drain any wetlands areas pursuant to Section 404 of the Clean Water Act and would not be considered tributaries.**

Provide acreage estimates for non-jurisdictional waters in the review area, where the sole potential basis of jurisdiction is the MBR factors (i.e., presence of migratory birds, presence of endangered species, use of water for irrigated agriculture), using best professional judgment (check all that apply):

- Non-wetland waters (i.e., rivers, streams): _____ linear feet _____ width (ft).
- Lakes/ponds: _____ acres.
- Other non-wetland waters: _____ acres. List type of aquatic resource: _____
- Wetlands: _____ acres.

Provide acreage estimates for non-jurisdictional waters in the review area that do not meet the "Significant Nexus" standard, where such a finding is required for jurisdiction (check all that apply):

- Non-wetland waters (i.e., rivers, streams): _____ linear feet, _____ width (ft).
- Lakes/ponds: _____ acres.
- Other non-wetland waters: _____ acres. List type of aquatic resource: _____
- Wetlands: _____ acres.

SECTION IV: DATA SOURCES.

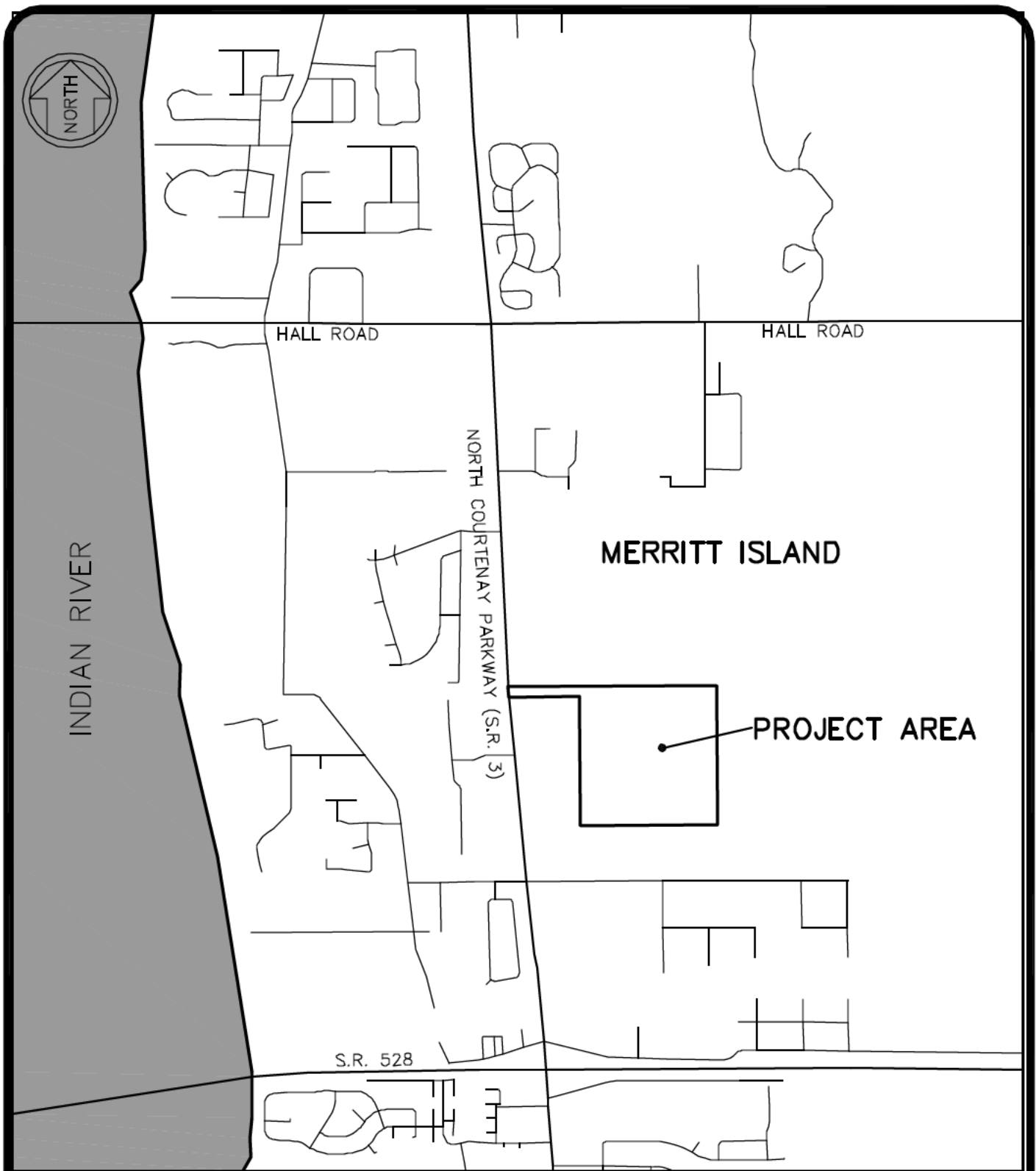
A. SUPPORTING DATA. Data reviewed for JD (check all that apply - checked items shall be included in case file and, where checked and requested, appropriately reference sources below):

- Maps, plans, plots or plat submitted by or on behalf of the applicant/consultant: _____
- Data sheets prepared/submitted by or on behalf of the applicant/consultant.
 - Office concurs with data sheets/delineation report.
 - Office does not concur with data sheets/delineation report.
- Data sheets prepared by the Corps: _____
- Corps navigable waters' study: _____
- U.S. Geological Survey Hydrologic Atlas: _____
 - USGS NHD data.

¹⁰ Prior to asserting or declining CWA jurisdiction based solely on this category, Corps Districts will elevate the action to Corps and EPA HQ for review consistent with the process described in the Corps/EPA Memorandum Regarding CWA Act Jurisdiction Following Rapanos.

- USGS 8 and 12 digit HUC maps.
- U.S. Geological Survey map(s). Cite scale & quad name: .
- USDA Natural Resources Conservation Service Soil Survey. Citation: .
- National wetlands inventory map(s). Cite name: .
- State/Local wetland inventory map(s): .
- FEMA/FIRM maps: .
- 100-year Floodplain Elevation is: (National Geodetic Vertical Datum of 1929)
- Photographs: Aerial (Name & Date): .
or Other (Name & Date): .
- Previous determination(s). File no. and date of response letter: .
- Applicable/supporting case law: .
- Applicable/supporting scientific literature: .
- Other information (please specify): .

B. ADDITIONAL COMMENTS TO SUPPORT JD: .



Sec.: 11
 Twp.: 24 South
 Rng.: 36 East
 Dsn. by : N/A
 Drn. by : LB
 Chk. by : JWM

LOCATION MAP PREPARED FOR:
SAVANNAH LANDING
 BREVARD COUNTY FLORIDA

Date : 12/28/16
 Scale : 1"=2000'
 P.N. : 393303
 Sheet No.

Bussen-Mayer Engineering Group

100 PARNELL STREET • MERRITT ISLAND, FLORIDA 32953
 PH. NO.: (321) 453-0010 FAX NO.: (321) 454-6885

Fig. 1



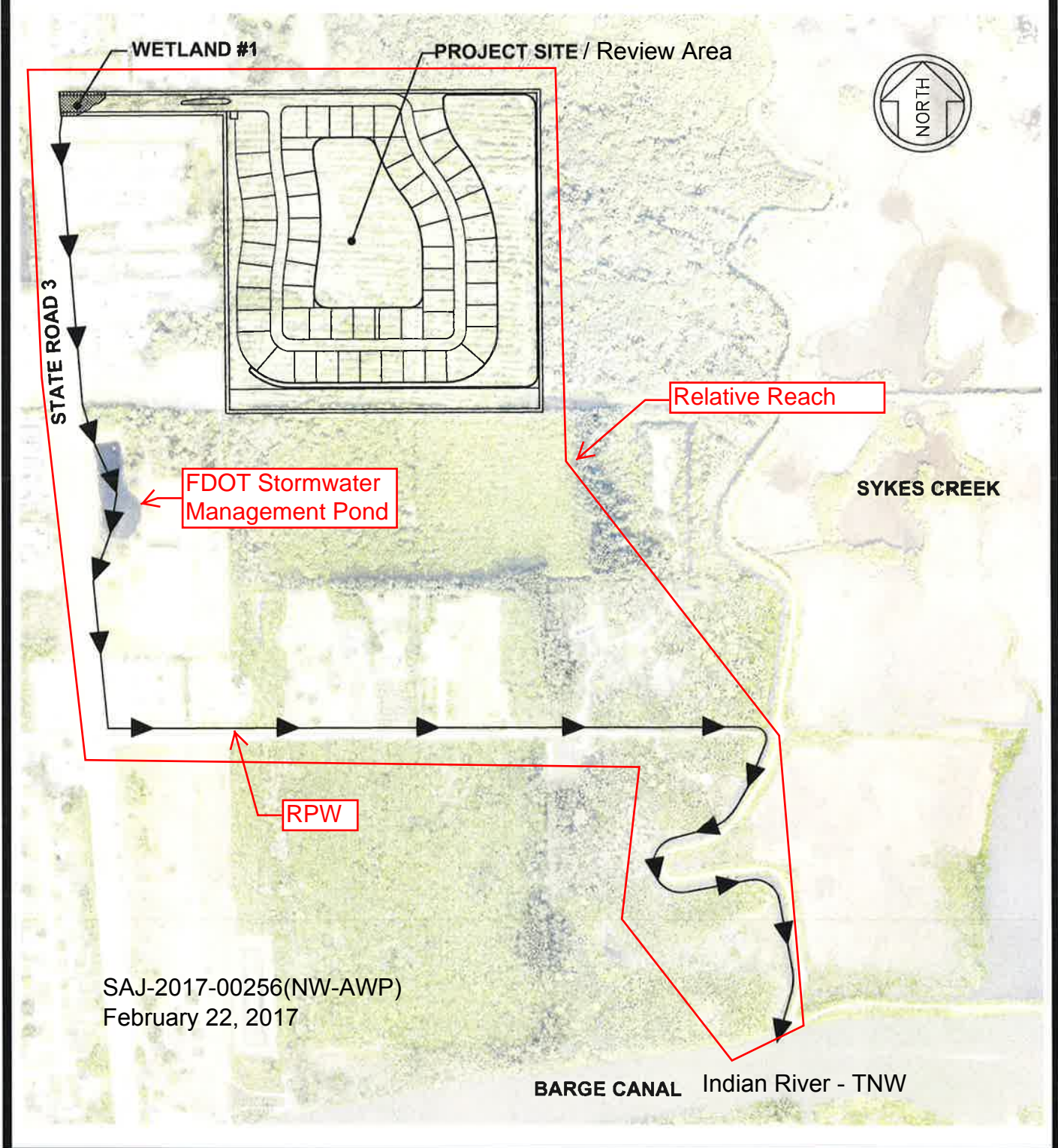
Courtenay Quadrangle Map
(1976)

Latitude: 28°25'06"
Longitude: 80°42'31"




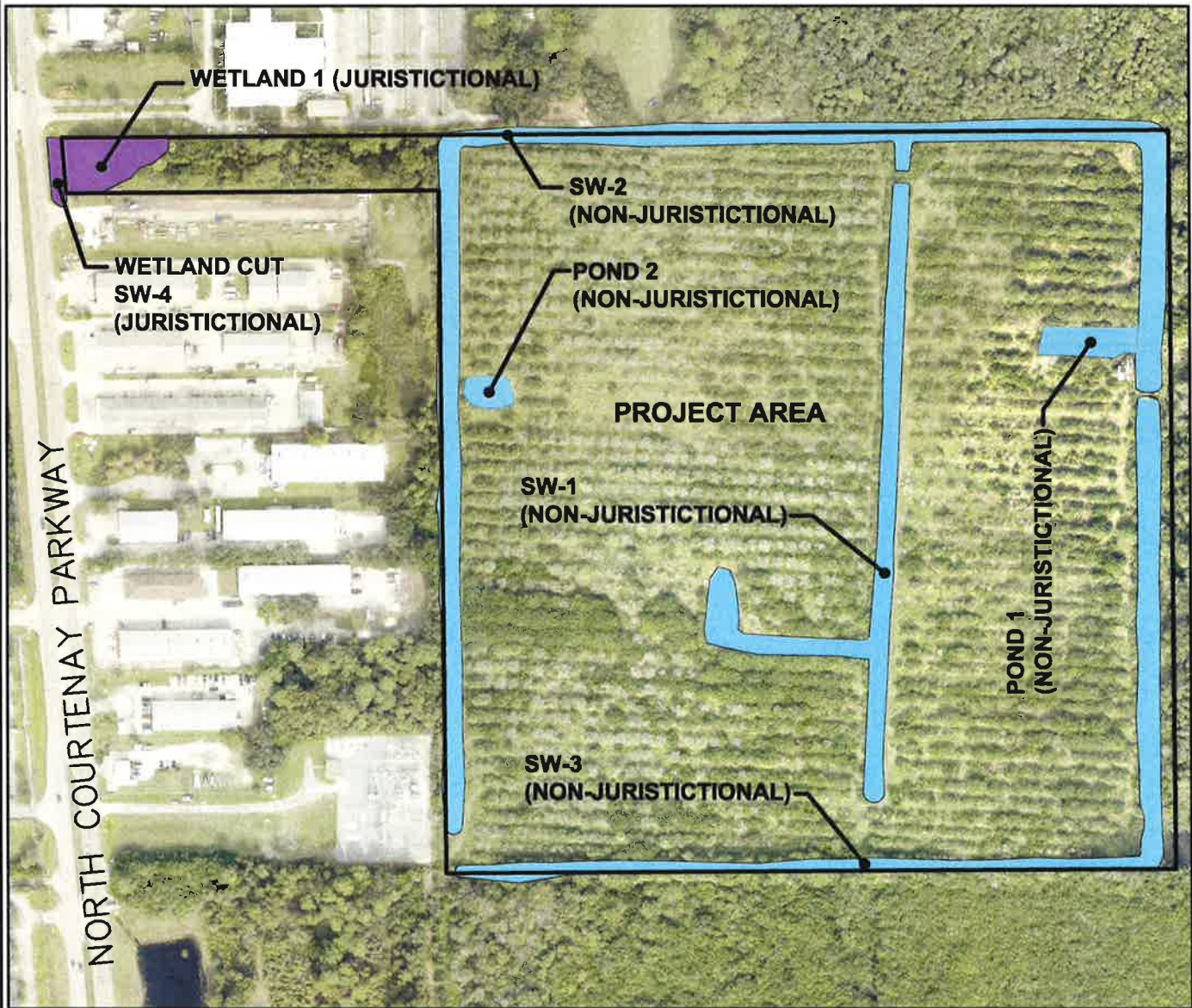
Sec.: 11	QUADRANGLE MAP PREPARED FOR: SAVANNAH LANDING	Date : 12/28/16
Twp.: 24 South		Scale : 1"=1000'
Rng.: 36 East		P.N. : 393303
Dsn. by : N/A	BREVARD COUNTY	FLORIDA
Drn. by : LB	Bussen-Mayer Engineering Group	
Chk. by : JWM	100 PARNELL STREET • MERRITT ISLAND, FLORIDA 32953 PH. NO.: (321) 453-0010 FAX NO.: (321) 454-6885	
		Sheet No. Fig. 2

SAVANNAH LANDING SUBDIVISION



SAJ-2017-00256(NW-AWP)
February 22, 2017

Sec.: 11	WETLAND OUTFALL SAVANNAH LANDING	Date : 12/20/16
Twp.: 24 South		Scale : 1"=600'
Rng.: 36 East	BREVARD COUNTY	FLORIDA
Dsn. by : NA	 Bussen-Mayer Engineering Group 100 PARNELL STREET • MERRITT ISLAND, FLORIDA 32953 PH. NO.: (321) 453-0010 FAX NO.: (321) 454-6885	P.N. : 393303
Drn. by : GM		Sheet No.
Chk. by : JWM		Exhibit 1



ACOE JURISTICTIONAL 0.34 acre



ACOE NON-JURISTICTIONAL 5.9 acres

Sec.: 11
Twp.: 24 South
Rng.: 36 East
Dsn. by : N/A
Drn. by : LB
Chk. by : JWM

JURISDICTION MAP PREPARED FOR:
SAVANNAH LANDING
BREVARD COUNTY FLORIDA

Date : 12/28/16
Scale : 1"=300'
P.N. : 393303
Sheet No.

 **Bussen-Mayer Engineering Group** 
100 PARNELL STREET • MERRITT ISLAND, FLORIDA 32953
PH. NO.: (321) 453-0010 FAX NO.: (321) 454-6885

Exhibit 2