

**APPROVED JURISDICTIONAL DETERMINATION FORM**  
**U.S. Army Corps of Engineers**

This form should be completed by following the instructions provided in Section IV of the JD Form Instructional Guidebook.

**SECTION I: BACKGROUND INFORMATION**

**A. REPORT COMPLETION DATE FOR APPROVED JURISDICTIONAL DETERMINATION (JD): August 26, 2015**

**B. DISTRICT OFFICE, FILE NAME, AND NUMBER: CESAJ-RD-WT, Villages of Manasota Beach, SAJ-2015-00557**

**C. PROJECT LOCATION AND BACKGROUND INFORMATION:**

State: Florida County/parish/borough: Sarasota City:  
Center coordinates of site (lat/long in degree decimal format): Lat. 27.014935° **N**, Long. 82.364144° **W**.  
Universal Transverse Mercator:

Name of nearest waterbody: Forked Creek

Name of nearest Traditional Navigable Water (TNW) into which the aquatic resource flows: Lemon Bay

Name of watershed or Hydrologic Unit Code (HUC): Forked Creek-Gottfried Creek Frontal (031002010301)

Check if map/diagram of review area and/or potential jurisdictional areas is/are available upon request.

Check if other sites (e.g., offsite mitigation sites, disposal sites, etc...) are associated with this action and are recorded on a different JD form.

**D. REVIEW PERFORMED FOR SITE EVALUATION (CHECK ALL THAT APPLY):**

Office (Desk) Determination. Date: 8/26/2015

Field Determination. Date(s): 7/17/2015

**SECTION II: SUMMARY OF FINDINGS**

**A. RHA SECTION 10 DETERMINATION OF JURISDICTION.**

There **Are no** "navigable waters of the U.S." within Rivers and Harbors Act (RHA) jurisdiction (as defined by 33 CFR part 329) in the review area. [Required]

Waters subject to the ebb and flow of the tide.

Waters are presently used, or have been used in the past, or may be susceptible for use to transport interstate or foreign commerce.

Explain: .

**B. CWA SECTION 404 DETERMINATION OF JURISDICTION.**

There **are and are not** "waters of the U.S." within Clean Water Act (CWA) jurisdiction (as defined by 33 CFR part 328) in the review area. [Required]

**1. Waters of the U.S.**

**a. Indicate presence of waters of U.S. in review area (check all that apply):<sup>1</sup>**

- TNWs, including territorial seas
- Wetlands adjacent to TNWs
- Relatively permanent waters<sup>2</sup> (RPWs) that flow directly or indirectly into TNWs
- Non-RPWs that flow directly or indirectly into TNWs
- Wetlands directly abutting RPWs that flow directly or indirectly into TNWs
- Wetlands adjacent to but not directly abutting RPWs that flow directly or indirectly into TNWs
- Wetlands adjacent to non-RPWs that flow directly or indirectly into TNWs
- Impoundments of jurisdictional waters
- Isolated (interstate or intrastate) waters, including isolated wetlands

**b. Identify (estimate) size of waters of the U.S. in the review area:**

Non-wetland waters: linear feet: width (ft) and/or 4.76 acres.

Wetlands: 11.48 acres.

**c. Limits (boundaries) of jurisdiction based on: 1987 Delineation Manual**

Elevation of established OHWM (if known): .

**2. Non-regulated waters/wetlands (check if applicable):<sup>3</sup>**

- Potentially jurisdictional waters and/or wetlands were assessed within the review area and determined to be not jurisdictional.  
Explain: **Wetlands 1-4, 6- 9, 10-13, 17-19, 25, 27-29 (46.78 acres) have been determined to be isolated and non-adjacent.**

<sup>1</sup> Boxes checked below shall be supported by completing the appropriate sections in Section III below.

<sup>2</sup> For purposes of this form, an RPW is defined as a tributary that is not a TNW and that typically flows year-round or has continuous flow at least "seasonally" (e.g., typically 3 months).

<sup>3</sup> Supporting documentation is presented in Section III.F.

### SECTION III: CWA ANALYSIS

#### A. TNWs AND WETLANDS ADJACENT TO TNWs

The agencies will assert jurisdiction over TNWs and wetlands adjacent to TNWs. If the aquatic resource is a TNW, complete Section III.A.1 and Section III.D.1. only; if the aquatic resource is a wetland adjacent to a TNW, complete Sections III.A.1 and 2 and Section III.D.1.; otherwise, see Section III.B below.

1. TNW

Identify TNW: .

Summarize rationale supporting determination: .

2. Wetland adjacent to TNW

Summarize rationale supporting conclusion that wetland is “adjacent”: .

#### B. CHARACTERISTICS OF TRIBUTARY (THAT IS NOT A TNW) AND ITS ADJACENT WETLANDS (IF ANY):

This section summarizes information regarding characteristics of the tributary and its adjacent wetlands, if any, and it helps determine whether or not the standards for jurisdiction established under *Rapanos* have been met.

The agencies will assert jurisdiction over non-navigable tributaries of TNWs where the tributaries are “relatively permanent waters” (RPWs), i.e. tributaries that typically flow year-round or have continuous flow at least seasonally (e.g., typically 3 months). A wetland that directly abuts an RPW is also jurisdictional. If the aquatic resource is not a TNW, but has year-round (perennial) flow, skip to Section III.D.2. If the aquatic resource is a wetland directly abutting a tributary with perennial flow, skip to Section III.D.4.

A wetland that is adjacent to but that does not directly abut an RPW requires a significant nexus evaluation. Corps districts and EPA regions will include in the record any available information that documents the existence of a significant nexus between a relatively permanent tributary that is not perennial (and its adjacent wetlands if any) and a traditional navigable water, even though a significant nexus finding is not required as a matter of law.

If the waterbody<sup>4</sup> is not an RPW, or a wetland directly abutting an RPW, a JD will require additional data to determine if the waterbody has a significant nexus with a TNW. If the tributary has adjacent wetlands, the significant nexus evaluation must consider the tributary in combination with all of its adjacent wetlands. This significant nexus evaluation that combines, for analytical purposes, the tributary and all of its adjacent wetlands is used whether the review area identified in the JD request is the tributary, or its adjacent wetlands, or both. If the JD covers a tributary with adjacent wetlands, complete Section III.B.1 for the tributary, Section III.B.2 for any onsite wetlands, and Section III.B.3 for all wetlands adjacent to that tributary, both onsite and offsite. The determination whether a significant nexus exists is determined in Section III.C below.

1. Characteristics of non-TNWs that flow directly or indirectly into TNW

(i) General Area Conditions:

Watershed size: 19,000 acres

Drainage area: 19,000 acres

Average annual rainfall: 54 inches

Average annual snowfall: 0 inches

(ii) Physical Characteristics:

(a) Relationship with TNW:

Tributary flows directly into TNW.

Tributary flows through **Pick List** tributaries before entering TNW.

Project waters are **1-2** river miles from TNW.

Project waters are **Pick List** river miles from RPW.

Project waters are **1 (or less)** aerial (straight) miles from TNW.

Project waters are **Pick List** aerial (straight) miles from RPW.

Project waters cross or serve as state boundaries. Explain: NA.

Identify flow route to TNW<sup>5</sup>: Forked Creek to Lemon Bay a TNW.

Tributary stream order, if known: .

<sup>4</sup> Note that the Instructional Guidebook contains additional information regarding swales, ditches, washes, and erosional features generally and in the arid West.

<sup>5</sup> Flow route can be described by identifying, e.g., tributary a, which flows through the review area, to flow into tributary b, which then flows into TNW.

(b) General Tributary Characteristics (check all that apply):

**Tributary is:**  Natural  
 Artificial (man-made). Explain: .  
 Manipulated (man-altered). Explain: Portions of the tributary have been culverted.

**Tributary properties with respect to top of bank (estimate):**

Average width: 20 feet  
Average depth: unknown feet  
Average side slopes: **3:1**.

**Primary tributary substrate composition (check all that apply):**

Silts  Sands  Concrete  
 Cobbles  Gravel  Muck  
 Bedrock  Vegetation. Type/% cover:  
 Other. Explain: .

**Tributary condition/stability** [e.g., highly eroding, sloughing banks]. Explain: Relatively stable, somewhat flashy system.

**Presence of run/riffle/pool complexes.** Explain: No.

**Tributary geometry:** **Relatively straight**

**Tributary gradient (approximate average slope):** %

(c) Flow:

Tributary provides for: **Seasonal flow**

Estimate average number of flow events in review area/year: **20 (or greater)**

Describe flow regime: wet season has more continuous flow than dry season.

Other information on duration and volume: .

Surface flow is: **Confined**. Characteristics: .

Subsurface flow: **Unknown**. Explain findings: .

Dye (or other) test performed: .

Tributary has (check all that apply):

Bed and banks  
 OHWM<sup>6</sup> (check all indicators that apply):  
 clear, natural line impressed on the bank  the presence of litter and debris  
 changes in the character of soil  destruction of terrestrial vegetation  
 shelving  the presence of wrack line  
 vegetation matted down, bent, or absent  sediment sorting  
 leaf litter disturbed or washed away  scour  
 sediment deposition  multiple observed or predicted flow events  
 water staining  abrupt change in plant community  
 other (list):  
 Discontinuous OHWM.<sup>7</sup> Explain: .

If factors other than the OHWM were used to determine lateral extent of CWA jurisdiction (check all that apply):

High Tide Line indicated by:  Mean High Water Mark indicated by:  
 oil or scum line along shore objects  survey to available datum;  
 fine shell or debris deposits (foreshore)  physical markings;  
 physical markings/characteristics  vegetation lines/changes in vegetation types.  
 tidal gauges  
 other (list):

(iii) **Chemical Characteristics:**

Characterize tributary (e.g., water color is clear, discolored, oily film; water quality; general watershed characteristics, etc.).

Explain: Forked Creek is likely to carry pollutants associated with agriculture/ranching and stormwater runoff from developed areas.

Identify specific pollutants, if known: .

<sup>6</sup>A natural or man-made discontinuity in the OHWM does not necessarily sever jurisdiction (e.g., where the stream temporarily flows underground, or where the OHWM has been removed by development or agricultural practices). Where there is a break in the OHWM that is unrelated to the waterbody's flow regime (e.g., flow over a rock outcrop or through a culvert), the agencies will look for indicators of flow above and below the break.

<sup>7</sup>Ibid.

(iv) **Biological Characteristics. Channel supports (check all that apply):**

- Riparian corridor. Characteristics (type, average width): small riparian corridor with abutting/adjacent wetlands.
- Wetland fringe. Characteristics:
- Habitat for:
  - Federally Listed species. Explain findings: potential wood stork foraging habitat.
  - Fish/spawn areas. Explain findings:
  - Other environmentally-sensitive species. Explain findings:
  - Aquatic/wildlife diversity. Explain findings:

2. **Characteristics of wetlands adjacent to non-TNW that flow directly or indirectly into TNW**

(i) **Physical Characteristics:**

(a) General Wetland Characteristics:

Properties:

Wetland size: 11.48 acres

Wetland type. Explain: Palustrine emergent.

Wetland quality. Explain: Moderate.

Project wetlands cross or serve as state boundaries. Explain: NA.

(b) General Flow Relationship with Non-TNW:

Flow is: **Intermittent flow**. Explain:

Surface flow is: **Confined**

Characteristics:

Subsurface flow: **Unknown**. Explain findings:

- Dye (or other) test performed:

(c) Wetland Adjacency Determination with Non-TNW:

Directly abutting

Not directly abutting

Discrete wetland hydrologic connection. Explain:

Ecological connection. Explain:

Separated by berm/barrier. Explain:

(d) Proximity (Relationship) to TNW

Project wetlands are **1-2** river miles from TNW.

Project waters are **1-2** aerial (straight) miles from TNW.

Flow is from: **Wetland to navigable waters**.

Estimate approximate location of wetland as within the **50 - 100-year** floodplain.

(ii) **Chemical Characteristics:**

Characterize wetland system (e.g., water color is clear, brown, oil film on surface; water quality; general watershed characteristics; etc.). Explain: wetlands in a agricultural/ranching setting..

Identify specific pollutants, if known:

(iii) **Biological Characteristics. Wetland supports (check all that apply):**

- Riparian buffer. Characteristics (type, average width):
- Vegetation type/percent cover. Explain: obligate and FAC species.
- Habitat for:
  - Federally Listed species. Explain findings:
  - Fish/spawn areas. Explain findings:
  - Other environmentally-sensitive species. Explain findings:
  - Aquatic/wildlife diversity. Explain findings: amphibians/reptiles/small mammals.

3. **Characteristics of all wetlands adjacent to the tributary (if any)**

All wetland(s) being considered in the cumulative analysis: **7**

Approximately ( 11.48 ) acres in total are being considered in the cumulative analysis.

For each wetland, specify the following:

<u>Directly abuts? (Y/N)</u>	<u>Size (in acres)</u>	<u>Directly abuts? (Y/N)</u>	<u>Size (in acres)</u>
W-5 (Y)	1.743	W-14 (Y)	0.599
W-20 (Y)	1.467	W-21 (Y)	0.694
W-22 (Y)	0.972	W-23 (Y)	3.263
W-24 (Y)	2.743	Offsite wetlands	50+

Summarize overall biological, chemical and physical functions being performed: storage of flood waters, reduction of downstream peak discharge and volume, recharge of aquifers/ maintenance of groundwater supplies, sediment and nutrients removal, provide breeding grounds, assist in maintenance of a more consistent water temperature in the tributary, provide wildlife habitat (e.g. feeding, nesting, spawning, rearing of young).

### C. SIGNIFICANT NEXUS DETERMINATION

**A significant nexus analysis will assess the flow characteristics and functions of the tributary itself and the functions performed by any wetlands adjacent to the tributary to determine if they significantly affect the chemical, physical, and biological integrity of a TNW. For each of the following situations, a significant nexus exists if the tributary, in combination with all of its adjacent wetlands, has more than a speculative or insubstantial effect on the chemical, physical and/or biological integrity of a TNW. Considerations when evaluating significant nexus include, but are not limited to the volume, duration, and frequency of the flow of water in the tributary and its proximity to a TNW, and the functions performed by the tributary and all its adjacent wetlands. It is not appropriate to determine significant nexus based solely on any specific threshold of distance (e.g. between a tributary and its adjacent wetland or between a tributary and the TNW). Similarly, the fact an adjacent wetland lies within or outside of a floodplain is not solely determinative of significant nexus.**

**Draw connections between the features documented and the effects on the TNW, as identified in the *Rapanos* Guidance and discussed in the Instructional Guidebook. Factors to consider include, for example:**

- Does the tributary, in combination with its adjacent wetlands (if any), have the capacity to carry pollutants or flood waters to TNWs, or to reduce the amount of pollutants or flood waters reaching a TNW?
- Does the tributary, in combination with its adjacent wetlands (if any), provide habitat and lifecycle support functions for fish and other species, such as feeding, nesting, spawning, or rearing young for species that are present in the TNW?
- Does the tributary, in combination with its adjacent wetlands (if any), have the capacity to transfer nutrients and organic carbon that support downstream foodwebs?
- Does the tributary, in combination with its adjacent wetlands (if any), have other relationships to the physical, chemical, or biological integrity of the TNW?

**Note: the above list of considerations is not inclusive and other functions observed or known to occur should be documented below:**

1. **Significant nexus findings for non-RPW that has no adjacent wetlands and flows directly or indirectly into TNWs.** Explain findings of presence or absence of significant nexus below, based on the tributary itself, then go to Section III.D:
2. **Significant nexus findings for non-RPW and its adjacent wetlands, where the non-RPW flows directly or indirectly into TNWs.** Explain findings of presence or absence of significant nexus below, based on the tributary in combination with all of its adjacent wetlands, then go to Section III.D:
3. **Significant nexus findings for wetlands adjacent to an RPW but that do not directly abut the RPW.** Explain findings of presence or absence of significant nexus below, based on the tributary in combination with all of its adjacent wetlands, then go to Section III.D: 6.
- 4.
5. **Physical:** The wetlands perform important flow maintenance functions including storage of flood waters and a release of these waters into the tributary in a more even and consistent manner. Therefore, the wetlands directly affect the duration, frequency, and volume of flow in the tributary and the downstream navigable water. The wetlands reduce local flooding. Storage of surface waters provides groundwater recharge that contributes to baseflow in the tributary that is vital to sustain aquatic life in downstream waters.
- 6.
7. **Chemical:** The wetlands improve water quality by removing sediment and nutrients that would otherwise reach downstream waters and have a negative effect on aquatic resources.
- 8.
9. **Biological:** The wetlands are important biologically since abut an intermittent stream that connects with a TNW. These wetlands provide breeding grounds for species that cannot reproduce in faster-moving water and move between wetlands and uplands over their lifecycle. The wetland, along with the tributary system, provide wildlife habitat (e.g. feeding, nesting, spawning, rearing of

young) for many aquatic species that live in traditional navigable waters. The wetlands also maintain a more consistent water temperature in tributaries, which is important to many aquatic species .

**D. DETERMINATIONS OF JURISDICTIONAL FINDINGS. THE SUBJECT WATERS/WETLANDS ARE (CHECK ALL THAT APPLY):**

**1. TNWs and Adjacent Wetlands.** Check all that apply and provide size estimates in review area:

- TNWs: linear feet width (ft), Or, acres.  
 Wetlands adjacent to TNWs: acres.

**2. RPWs that flow directly or indirectly into TNWs.**

- Tributaries of TNWs where tributaries typically flow year-round are jurisdictional. Provide data and rationale indicating that tributary is perennial: .  
 Tributaries of TNW where tributaries have continuous flow “seasonally” (e.g., typically three months each year) are jurisdictional. Data supporting this conclusion is provided at Section III.B. Provide rationale indicating that tributary flows seasonally: Tributary is in an area that receives a significant amount of rain events. In addition it is relatively close (1-2 miles) to the coastline. It would be likely that the stream has groundwater influence during some parts of the year.

Provide estimates for jurisdictional waters in the review area (check all that apply):

- Tributary waters: **6500** linear feet width (ft).  
 Other non-wetland waters: acres.  
Identify type(s) of waters: .

**3. Non-RPWs<sup>8</sup> that flow directly or indirectly into TNWs.**

- Waterbody that is not a TNW or an RPW, but flows directly or indirectly into a TNW, and it has a significant nexus with a TNW is jurisdictional. Data supporting this conclusion is provided at Section III.C.

Provide estimates for jurisdictional waters within the review area (check all that apply):

- Tributary waters: linear feet width (ft).  
 Other non-wetland waters: acres.  
Identify type(s) of waters: .

**4. Wetlands directly abutting an RPW that flow directly or indirectly into TNWs.**

- Wetlands directly abut RPW and thus are jurisdictional as adjacent wetlands.  
 Wetlands directly abutting an RPW where tributaries typically flow year-round. Provide data and rationale indicating that tributary is perennial in Section III.D.2, above. Provide rationale indicating that wetland is directly abutting an RPW: .  
 Wetlands directly abutting an RPW where tributaries typically flow “seasonally.” Provide data indicating that tributary is seasonal in Section III.B and rationale in Section III.D.2, above. Provide rationale indicating that wetland is directly abutting an RPW: Wetlands are part of the Forked Creek riparian area.

Provide acreage estimates for jurisdictional wetlands in the review area: **11.48** acres.

**5. Wetlands adjacent to but not directly abutting an RPW that flow directly or indirectly into TNWs.**

- Wetlands that do not directly abut an RPW, but when considered in combination with the tributary to which they are adjacent and with similarly situated adjacent wetlands, have a significant nexus with a TNW are jurisdictional. Data supporting this conclusion is provided at Section III.C.

Provide acreage estimates for jurisdictional wetlands in the review area: acres.

**6. Wetlands adjacent to non-RPWs that flow directly or indirectly into TNWs.**

- Wetlands adjacent to such waters, and have when considered in combination with the tributary to which they are adjacent and with similarly situated adjacent wetlands, have a significant nexus with a TNW are jurisdictional. Data supporting this conclusion is provided at Section III.C.

Provide estimates for jurisdictional wetlands in the review area: acres.

---

<sup>8</sup>See Footnote # 3.

**7. Impoundments of jurisdictional waters.<sup>9</sup>**

As a general rule, the impoundment of a jurisdictional tributary remains jurisdictional.

- Demonstrate that impoundment was created from “waters of the U.S.,” or
- Demonstrate that water meets the criteria for one of the categories presented above (1-6), or
- Demonstrate that water is isolated with a nexus to commerce (see E below).

**E. ISOLATED [INTERSTATE OR INTRA-STATE] WATERS, INCLUDING ISOLATED WETLANDS, THE USE, DEGRADATION OR DESTRUCTION OF WHICH COULD AFFECT INTERSTATE COMMERCE, INCLUDING ANY SUCH WATERS (CHECK ALL THAT APPLY):<sup>10</sup>**

- which are or could be used by interstate or foreign travelers for recreational or other purposes.
- from which fish or shellfish are or could be taken and sold in interstate or foreign commerce.
- which are or could be used for industrial purposes by industries in interstate commerce.
- Interstate isolated waters. Explain: .
- Other factors. Explain: .

**Identify water body and summarize rationale supporting determination:** .

Provide estimates for jurisdictional waters in the review area (check all that apply):

- Tributary waters: linear feet width (ft).
- Other non-wetland waters: acres.  
Identify type(s) of waters: .
- Wetlands: acres.

**F. NON-JURISDICTIONAL WATERS, INCLUDING WETLANDS (CHECK ALL THAT APPLY):**

- If potential wetlands were assessed within the review area, these areas did not meet the criteria in the 1987 Corps of Engineers Wetland Delineation Manual and/or appropriate Regional Supplements.
- Review area included isolated waters with no substantial nexus to interstate (or foreign) commerce.
  - Prior to the Jan 2001 Supreme Court decision in “SWANCC,” the review area would have been regulated based solely on the “Migratory Bird Rule” (MBR).
- Waters do not meet the “Significant Nexus” standard, where such a finding is required for jurisdiction. Explain: .
- Other: (explain, if not covered above): .

Provide acreage estimates for non-jurisdictional waters in the review area, where the sole potential basis of jurisdiction is the MBR factors (i.e., presence of migratory birds, presence of endangered species, use of water for irrigated agriculture), using best professional judgment (check all that apply):

- Non-wetland waters (i.e., rivers, streams): linear feet width (ft).
- Lakes/ponds: acres.
- Other non-wetland waters: acres. List type of aquatic resource: .
- Wetlands: 46.78 acres.

Provide acreage estimates for non-jurisdictional waters in the review area that do not meet the “Significant Nexus” standard, where such a finding is required for jurisdiction (check all that apply):

- Non-wetland waters (i.e., rivers, streams): linear feet, width (ft).
- Lakes/ponds: acres.
- Other non-wetland waters: acres. List type of aquatic resource: .
- Wetlands: acres.

**SECTION IV: DATA SOURCES.**

**A. SUPPORTING DATA. Data reviewed for JD (check all that apply - checked items shall be included in case file and, where checked and requested, appropriately reference sources below):**

- Maps, plans, plots or plat submitted by or on behalf of the applicant/consultant: .
- Data sheets prepared/submitted by or on behalf of the applicant/consultant.
  - Office concurs with data sheets/delineation report.
  - Office does not concur with data sheets/delineation report.
- Data sheets prepared by the Corps: .

<sup>9</sup> To complete the analysis refer to the key in Section III.D.6 of the Instructional Guidebook.

<sup>10</sup> Prior to asserting or declining CWA jurisdiction based solely on this category, Corps Districts will elevate the action to Corps and EPA HQ for review consistent with the process described in the Corps/EPA Memorandum Regarding CWA Act Jurisdiction Following Rapanos.

- Corps navigable waters' study: .
- U.S. Geological Survey Hydrologic Atlas: .
  - USGS NHD data.
  - USGS 8 and 12 digit HUC maps.
- U.S. Geological Survey map(s). Cite scale & quad name: RAR layer Google Earth.
- USDA Natural Resources Conservation Service Soil Survey. Citation:RAR layer Google Earth.
- National wetlands inventory map(s). Cite name: RAR layer Google Earth.
- State/Local wetland inventory map(s): .
- FEMA/FIRM maps: .
- 100-year Floodplain Elevation is: (National Geodetic Vertical Datum of 1929)
- Photographs:  Aerial (Name & Date): Google Earth 1995-2014.  
or  Other (Name & Date): .
- Previous determination(s). File no. and date of response letter: .
- Applicable/supporting case law: .
- Applicable/supporting scientific literature: .
- Other information (please specify): .

**B. ADDITIONAL COMMENTS TO SUPPORT JD:** A site visit was conducted on July 17, 2015 to verify the wetland limits and jurisdictional status of onsite waters. In addition, a desk review was completed using current and historical aerial imagery, the National Hydrography Dataset flow lines, and other remotely sensed data available on the districts Resources at Risk database to determine presence and proximity of wetlands and surface waters.

Non-Jurisdictional Waters: Wetlands 1-4, 6- 9, 10-13, 17-19, 25, 27-29 (46.78 acres) are non-jurisdictional wetlands that are considered isolated and not adjacent because: 1. there is no unbroken or shallow subsurface connection to jurisdictional waters, 2. the wetlands are not physically separated from jurisdictional waters by man-made dikes or natural river berms, or 3. The proximity of the wetlands to a jurisdictional water is not reasonably close. The wetlands are depression areas in an upland palmetto dominated pasture.



# ESTIMATED FLOW-WAY CLASSIFICATIONS

Existing On-site Road Crossings Proposed for Expansion Within Other Waters of the United States

Ditch (RPW)

Forked Creek (RPW)

Forked Creek Canal No. 35-452 (RPW)

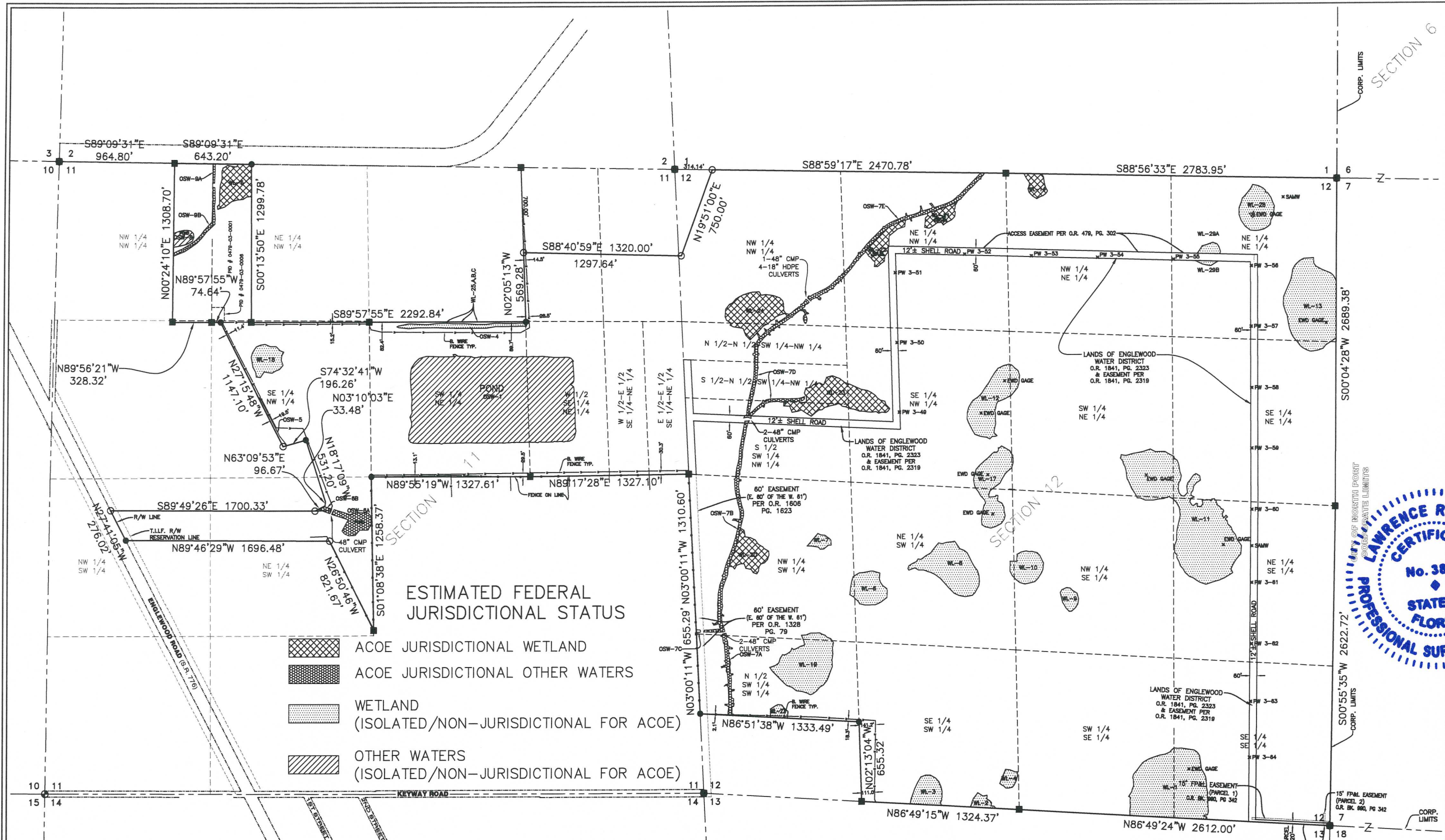
Existing On-site Road Crossing To be Expanded – Within Proposed Isolated/Non-jurisdictional Ditch

Adjacent Historic Off-site Road Crossing (Old Collapsed Culvert)

Forked Creek (TNW)

Lemon Bay (TNW)





**ESTIMATED FEDERAL JURISDICTIONAL STATUS**

- ACOE JURISDICTIONAL WETLAND
- ACOE JURISDICTIONAL OTHER WATERS
- WETLAND (ISOLATED/NON-JURISDICTIONAL FOR ACOE)
- OTHER WATERS (ISOLATED/NON-JURISDICTIONAL FOR ACOE)

**SURVEYOR'S NOTES:**

1. NOT A BOUNDARY SURVEY
2. AREA TABULATION  
 745.877 ACRES - VILLAGE OF MANASOTA BEACH PORTION OF PROJECT AREA ASSOCIATED WITH EXPIRED PETITION 4232315.0.  
 16.494 ACRES - ENGLEWOOD WATER DISTRICT  
 19.472 ACRES - 2014 ACQUIRED PARCEL  
 781.843 ACRES - TOTAL PROJECT  
 SEE SHEET 2 FOR TABULATION OF WETLAND AND OTHER SURFACE WATERS AREAS
3. NOTE: THIS SKETCH WAS PREPARED FROM SURVEYS AND PUBLIC RECORDS FURNISHED BY THE CLIENT AND IS NOT A PRODUCT OF A CURRENT BOUNDARY SURVEY.

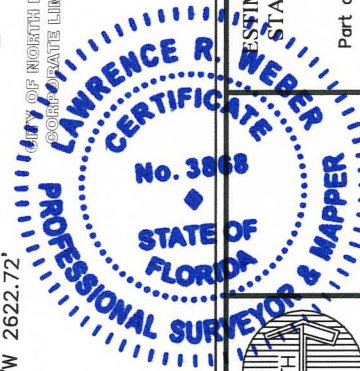
4. THE LIMITS OF THE STATE JURISDICTIONAL WETLANDS AND OTHER SURFACE WATERS ARE BASED ON THE SURVEY COORDINATE TABLE CONTAINED IN PETITION 4232315.0 (FOR THE PORTION OF THE CURRENT PROJECT AREA THAT CORRESPONDS WITH PROJECT AREA ASSOCIATED WITH PETITION 4232315.0). ADDITIONALLY WL-5, OSW-8, OSW-9A AND OSW-9B DEPICTED HEREON ARE FROM AN ON-SITE SWFWMD JURISDICTIONAL REVIEW CONDUCTED ON MAY 2, 2014 BY DISTRICT STAFF TASHA BOWERS, OSW-4 IS DEPICTED FROM FIELD LOCATIONS OF THE TOP OF BANK MEASUREMENTS BY WEBER ENGINEERING & SURVEYING, INC. ON JUNE 26, 2014.

**ABBREVIATION KEY:**  
 WL = WETLAND  
 OSW = OTHER SURFACE WATER  
 PW = PRODUCTION WELL

**SURVEYOR'S CERTIFICATION**

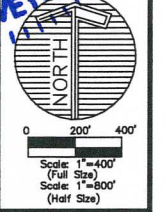
I hereby certify that this special purpose survey was prepared under my direction and supervision, that it is a true representation of the land as shown and described hereon to the best of my knowledge and belief and that it meets the "Minimum Technical Standards for Land Surveying in the State of Florida" Chapter 33c-17, Florida Administrative Code pursuant to Section 472.022, Florida Statutes.

Date of Certificate: *7/9/14*  
 Lawrence R. Weber  
 Professional Surveyor and Mapper  
 Florida Certificate No. 3668  
 (Not valid unless embossed with original Surveyor's Seal)



**WEBER ENGINEERING & SURVEYING, INC.**  
 4596 Ashton Road - Sarasota, Florida 34233  
 Telephone: (941) 921-3914 ~ Fax: (941) 924-3094  
 www.weberengineering.com  
 Surveying & Mapping Business Authorization No. LB 4010  
 Engineering Business Authorization No. EB 4010

ESTIMATED ACOE WETLAND JURISDICTION  
 STATE JURISDICTIONAL WETLANDS AND  
 OTHER SURFACE WATERS  
 VILLAGES OF MANASOTA BEACH  
 Part of Sections 11 & 12, Township 40 South, Range 19 East  
 Sarasota County, Florida



Revisions:	Description
Date	General Revisions
7/9/14	OSW 6A, 6B CHANGED TO ACOE OW
9/9/15	
Job #	2013072
Dwg #	D-16277-3
Date:	1/6/14
Drawn by:	RTK
Checked by:	