

Public Scoping Meeting

August 12, 2013

Southern Palm Beach Island Comprehensive Shoreline Stabilization Environmental Impact Statement

Presented by:

Garett Lips

US Army Corps of Engineers



US Army Corps of Engineers
BUILDING STRONG[®]
JACKSONVILLE DISTRICT



Southern Palm Beach Island Comprehensive Shoreline Stabilization

- What do we hope to achieve tonight?
 - ▶ National Environmental Policy Act (NEPA)
 - ▶ The Environmental Impact Statement (EIS) Process
 - ▶ What is the Proposed Project?
 - ▶ What are the Major Sections of the EIS?
 - ▶ We answer your questions about the process.
 - ▶ Public Comments
 - What do you want us to consider in the EIS?



National Environmental Policy Act

- The Nation's basic environmental protection charter.
- Primary purpose is to ensure that Federal Agencies **consider the environmental consequences** of their actions.
 - ▶ To Foster and promote the general welfare
 - ▶ Create/maintain conditions under which man and nature can exist in productive harmony
 - ▶ Fulfill social, economic, and other requirements of present/future generations



Why is NEPA required here?

- USACE is the Federal agency responsible for permits (a Major Federal Action)
- The proposed project requires a permit
 - ▶ Placement of fill requires a Section 404 authorization
 - ▶ Structures or work in tidal waters requires Section 10 authorization.



Types of NEPA Analysis

Council on Environmental Quality (CEQ) regulations provide three types of NEPA analysis **based upon potential for significant impact:**

- Categorical Exclusions
- Environmental Assessments
- Environmental Impact Statements



Why is an EIS required?

- Federal Agencies must **re** **are** a detailed environmental impact statement (EIS) that **assesses** the proposed action and all reasonable alternatives for:
 - ▶ **“major Federal actions**
 - ▶ **significantly affecting the quality of the human environment”**.



NEPA Creates:

- **Transparency:** NEPA creates a public process.
- **Informed decision making:** Supported by systematic, interdisciplinary, reproducible (objective) documented evaluation of potential impacts for a range of alternatives.
- **Involvement:** An opportunity for all stakeholders/interested and affected parties to inform the decision with broader base of information and approaches and an opportunity to for all affected parties to:
 - Identify alternatives, mitigation, impacts
 - Recommend conditions
 - Plan for future needs
- **Opportunity for Sustainability:** An opportunity to achieve a more sustainable, balanced outcome Integrating environmental, economic and social objectives, short and long term concerns .



Southern Palm Beach Island Comprehensive Shoreline Stabilization

- What do we hope to achieve tonight?
 - ▶ National Environmental Policy Act (NEPA)
 - ▶ **The Environmental Impact Statement (EIS) Process**
 - ▶ What is the Proposed Project?
 - ▶ What are the Major Sections of the EIS?
 - ▶ We answer your questions about the process.
 - ▶ Public Comments
 - What do you want us to consider in the EIS?

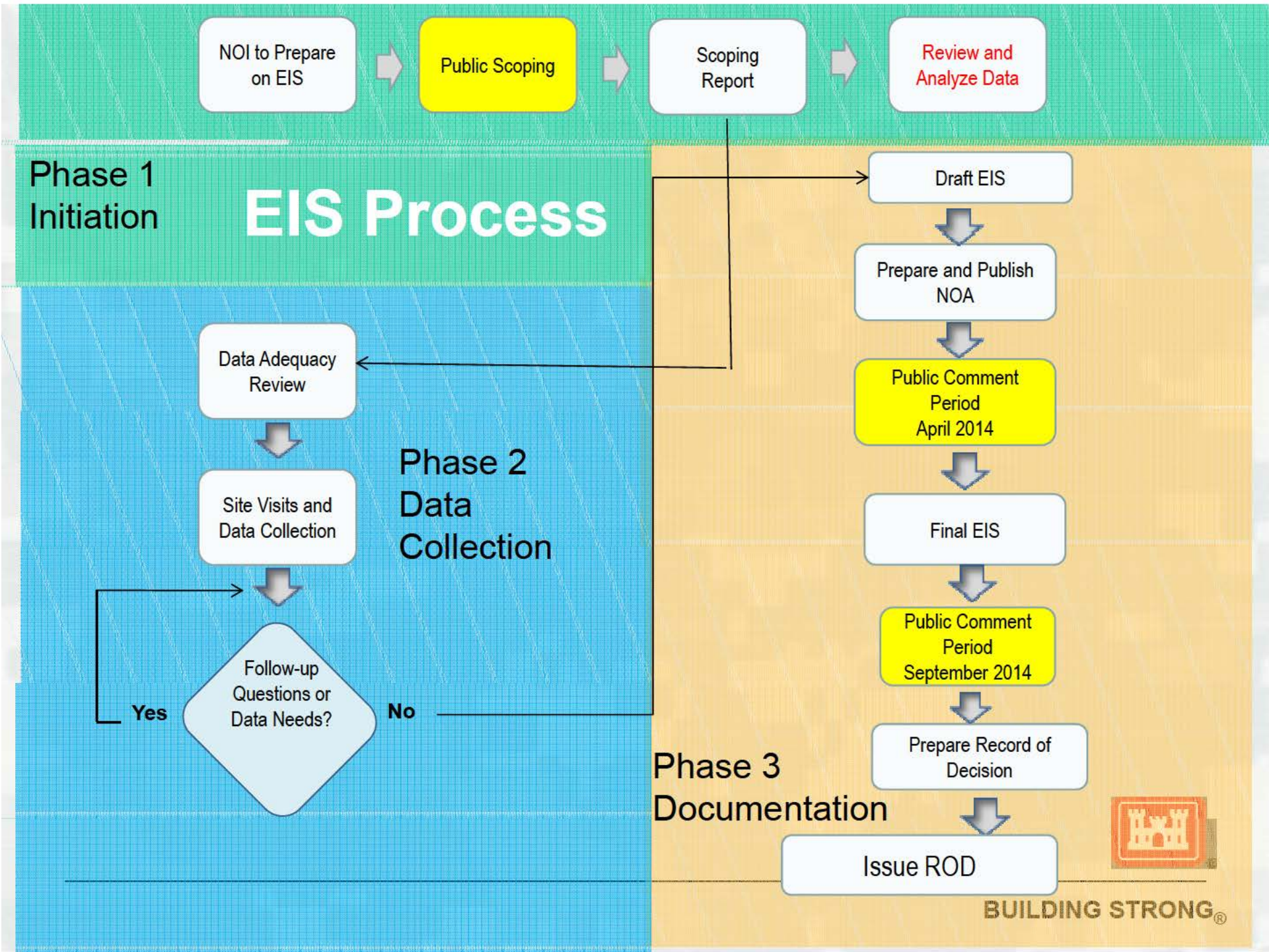


Who is conducting this EIS?

▶ Lead Federal Agency

- United States Army Corps of Engineers -
Regulatory Division
- Garrett Lips, Project Manager





The Public's Role In EIS Process?

- Provide input
 - ▶ What should we consider?
- Participate by attending public meetings
- Reviewing the Draft EIS and submit comments
- Reviewing the Final EIS and submit comments

Under NEPA guidelines, all comments received from the public during the comment period(s) are considered.

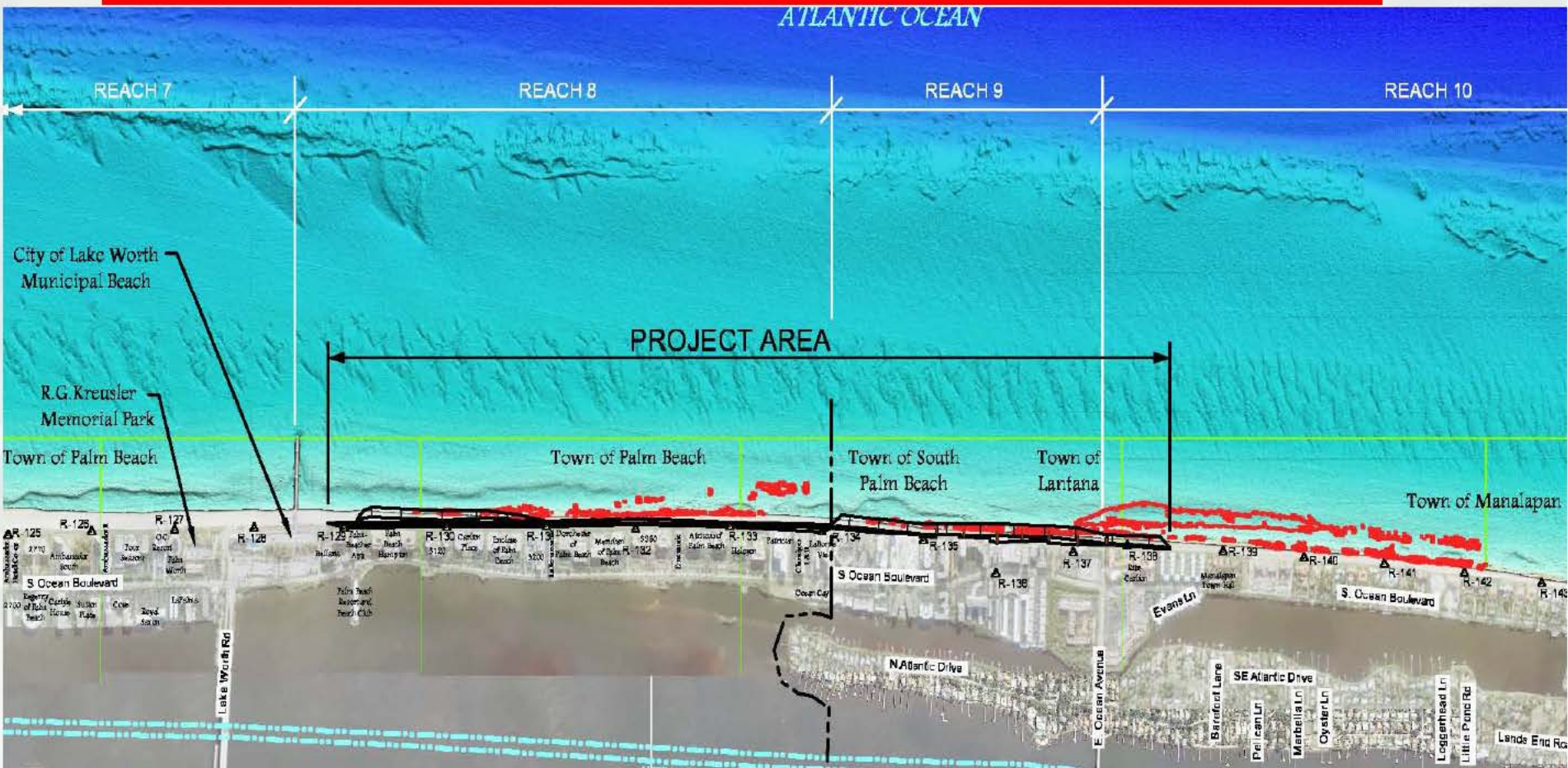


Southern Palm Beach Island Comprehensive Shoreline Stabilization

- What do we hope to achieve tonight?
 - ▶ National Environmental Policy Act (NEPA)
 - ▶ The Environmental Impact Statement (EIS) Process
 - ▶ **What is the Proposed Project?**
 - ▶ What are the Major Sections of the EIS?
 - ▶ We answer your questions about the process.
 - ▶ Public Comments
 - What do you want us to consider in the EIS?



Project Area



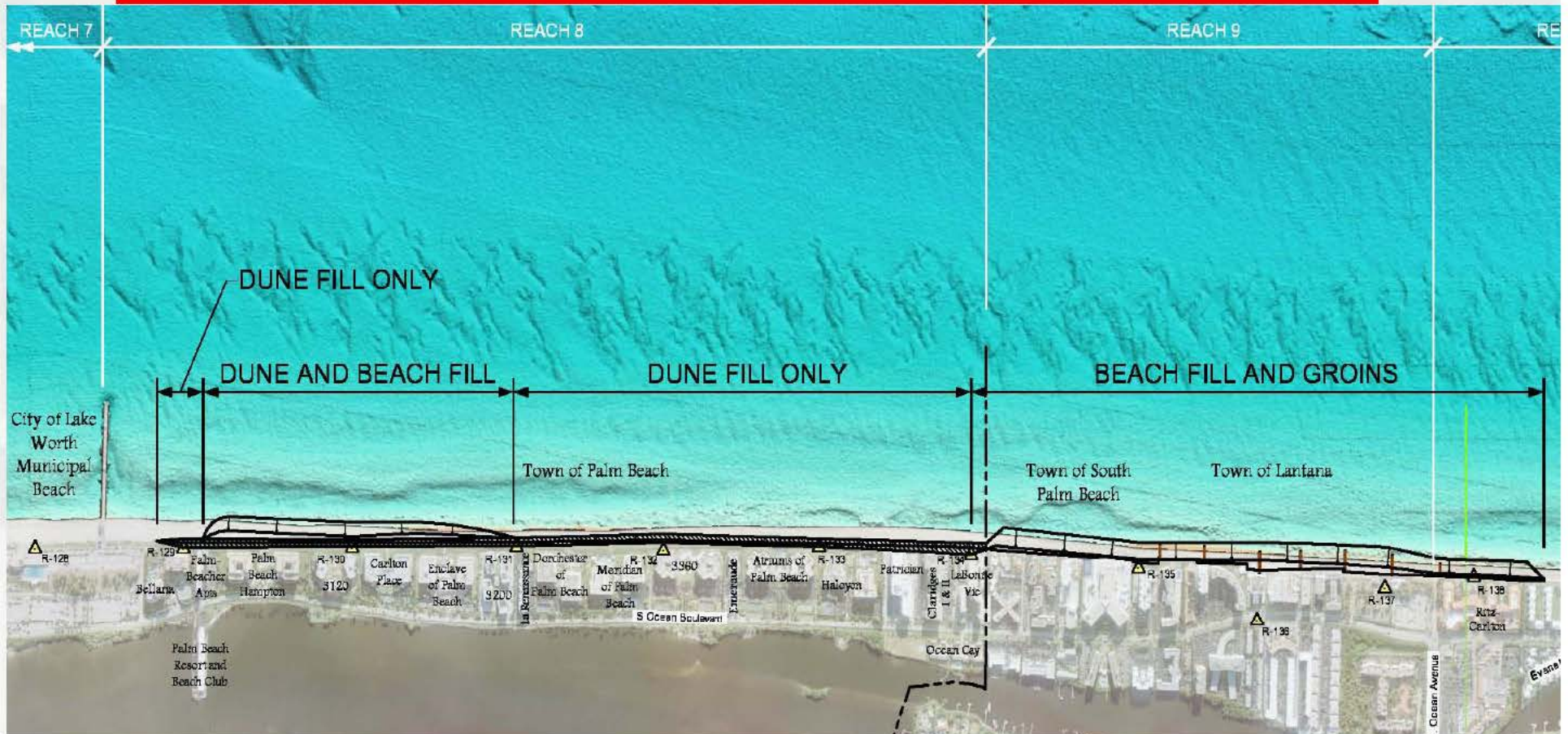
BUILDING STRONG®

Southern Palm Beach Island Comprehensive Shoreline Stabilization

- Dune Restoration and Beach Fill
 - ▶ FDEP Monument R-129-188' to R-131 (Town of Palm Beach)
- Dune Restoration Only
 - ▶ R-131 to R-134 (Town of Palm Beach)
- Beach Fill and Short Low Profile Groins
 - ▶ R-134 to R138+500 (Town of South Palm Beach, Town of Lantana and Town of Manalapan)
 - ▶ Low Profile Concrete King Pile and Panel Groins
- Upland sand source, truck haul project-150K yards



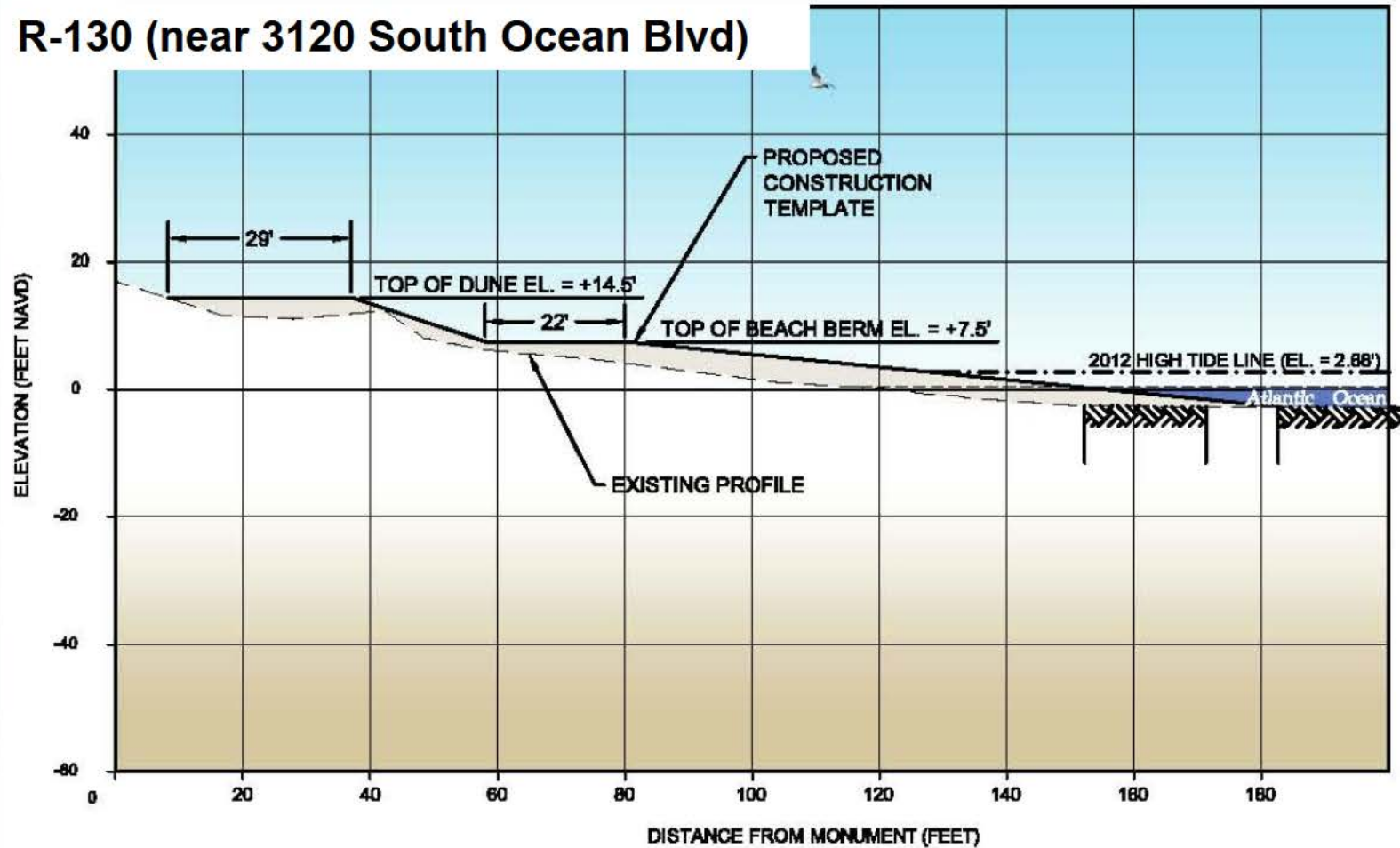
Southern Palm Beach Island Comprehensive Shoreline Stabilization



BUILDING STRONG®

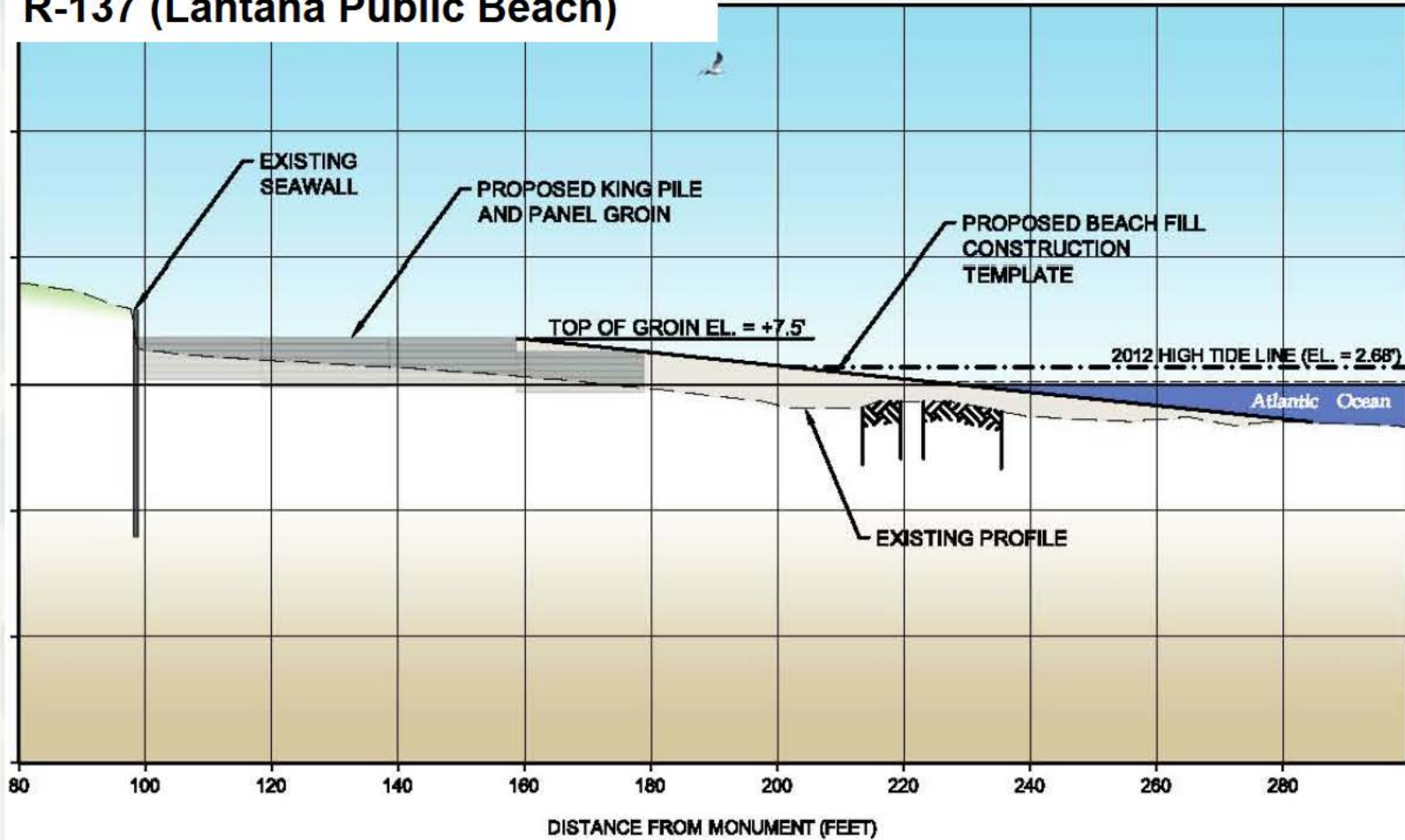
Typical Cross-Section North

R-130 (near 3120 South Ocean Blvd)



Typical Cross-Section South

R-137 (Lantana Public Beach)



Southern Palm Beach Island Comprehensive Shoreline Stabilization

- What do we hope to achieve tonight?
 - ▶ National Environmental Policy Act (NEPA)
 - ▶ The Environmental Impact Statement (EIS) Process
 - ▶ What is the Proposed Project?
 - ▶ **What are the Major Sections of the EIS?**
 - ▶ We answer your questions about the process.
 - ▶ Public Comments
 - What do you want us to consider in the EIS?



Major Sections of the EIS

- Purpose and Need
- Description of Alternatives
- Affected Environment
- Impact Assessments of Alternatives
- Endangered species



Purpose and Need

- ▶ Town of Palm Beach: “Use cost effective beach fill placement and/or coastal protection structures when environmentally possible, which may enhance stability to existing seawalls and enhance the existing beach and dune system for 15-year storm protection to upland property, and, at a minimum, demonstrate 25-year storm protection to habitable buildings currently without seawalls in areas where seawalls cannot be state qualified and the community of upland property with the existing beach and dune system serves as the habitable buildings last line of defense from the ocean.”



Purpose and Need

- **Palm Beach County:** Palm Beach County proposes construction of seven (7) low-profile groins placed perpendicular to the shoreline extending from the existing seawalls to the post-construction waterline. Construction of these structures will help stabilize the shoreline by disrupting a portion of the sand flowing south along the beach and depositing it on the updrift side of the structure. The project also includes optimized placement of approximately 75,000 cubic yards of material along the most critically eroded areas within the project template.



Alternatives

- Alternatives must be
 - ▶ Reasonable (practicable and feasible)
 - ▶ Meet the purpose and need
- Potential Alternatives:
 - ▶ No Action Alternative
 - ▶ Dune Restoration
 - ▶ Applicants' Proposed Alternative
 - ▶ Others?



Affected Environment



Dune Vegetation



Intertidal Hardbottom



Wrack Line

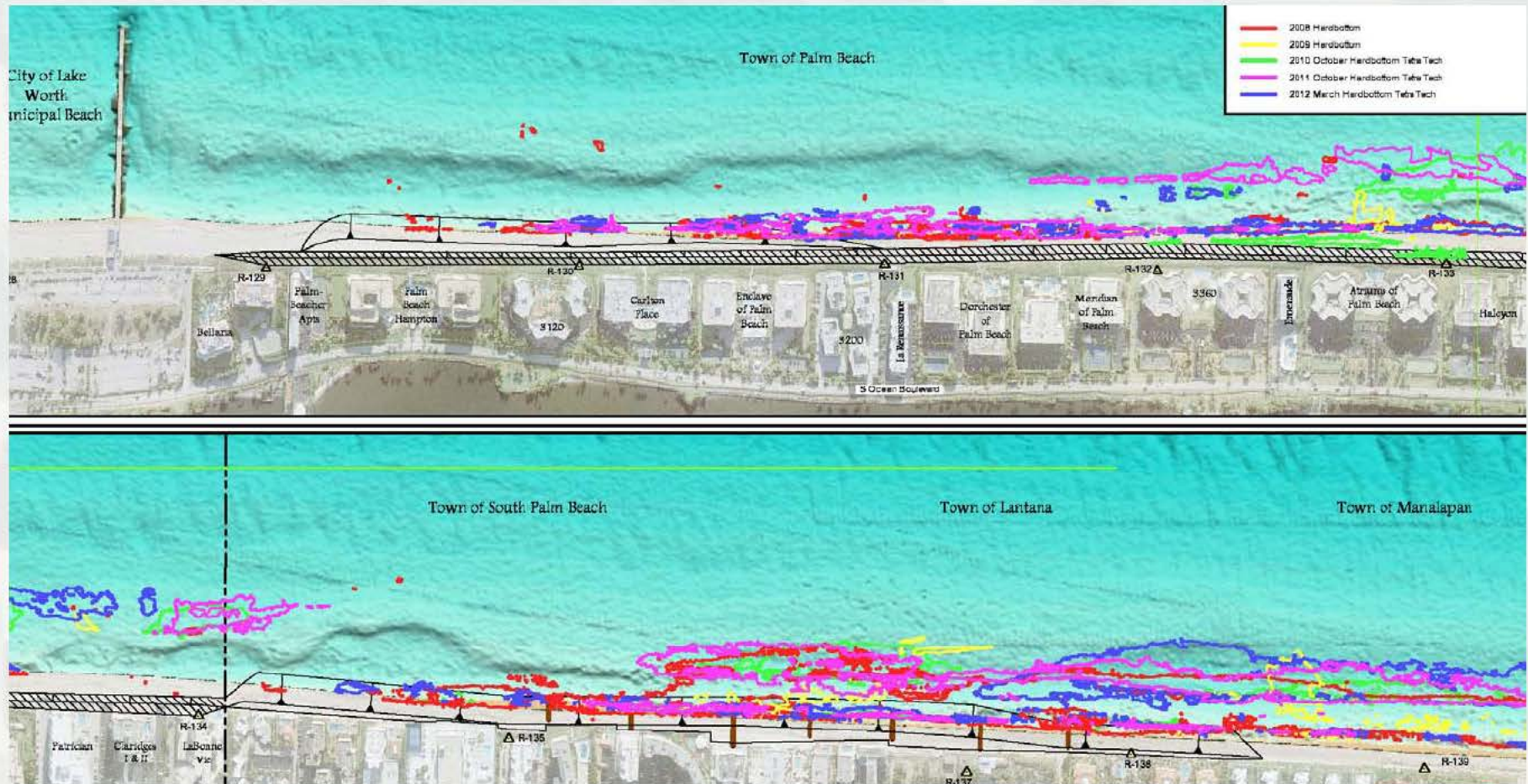


Subtidal Hardbottom



BUILDING STRONG®

Affected Environment



BUILDING STRONG®

Affected Environment



BUILDING STRONG®

Impact Assessments of Alternatives

- Direct effects of the proposed action occur at the same time and place as the action.
- Indirect effects are reasonably foreseeable effects caused by the action that occur later in time or farther in distance, such as changes in land use patterns, effects on air, water, or natural resources.
- Cumulative effects are those which result from the incremental impact of the action when added to other past, present, and reasonably foreseeable future actions



Threatened or Endangered Species

- Swimming and nesting sea turtles
- Acropora spp.
- Candidate coral species
- Piping plover
- Smalltooth sawfish
- West Indian manatee

- Others?



Southern Palm Beach Island Comprehensive Shoreline Stabilization

- What do we hope to achieve tonight?
 - ▶ National Environmental Policy Act (NEPA)
 - ▶ The Environmental Impact Statement (EIS) Process
 - ▶ What is the Proposed Project?
 - ▶ What are the Major Sections of the EIS?
 - ▶ **We answer your questions about the process.**
 - ▶ Public Comments
 - What do you want us to consider in the EIS?



Questions about
the EIS process?

Need clarification on the
proposed project?



General Schedule

- Notice of Intent in Federal Register: July 03, 2013
- Public Notice: July 24, 2013
- Scoping Meeting: Aug 12, 2013
- Scoping Period ends:(extended) **September 3, 2013**

- Milestones:
 - ▶ Notice of Availability of the DEIS ~ April 2014
 - ▶ Notice of Availability of the FEIS ~ September 2014
 - ▶ Record of Decision ~ mid October 2014



Southern Palm Beach Island Comprehensive Shoreline Stabilization

- What do we hope to achieve tonight?
 - ▶ National Environmental Policy Act (NEPA)
 - ▶ The Environmental Impact Statement (EIS) Process
 - ▶ What is the Proposed Project?
 - ▶ What are the Major Sections of the EIS?
 - ▶ We answer your questions about the process.
 - ▶ **Public Comments**
 - What do you want us to consider in the EIS?



4 Ways for Public to Comment

1. Comment Publicly

2. Comment Form

Fill out the paper form and submit it tonight (drop boxes at the Comments Station)

3. Electronic Entry

Email comments to Garett.G.Lips@usace.army.mil

4. Mail Comments

please send to:

US Army Corps of Engineers

4400 PGA Boulevard, Suite 500

Palm Beach Gardens, Florida 33410



**Southern Palm Beach Island
Comprehensive Shoreline Stabilization**

Comments?

**What should the
EIS consider?**

**What are your
concerns?**

