



U.S. ARMY



BUILDING STRONG

2017 BEACH RENOURISHMENT PROJECT

Public Meeting

Thursday, January 5, 2017, 6 p.m.

This project will address beach erosion
in the vicinity of 54 Street

Miami Beach City Hall
1st Floor Conference Room
1700 Convention Center Dr.
Miami Beach, FL 33139

Questions & RSVP
Erica.A.Skolte@usace.army.mil | 561.472.8893
goo.gl/M1QoW8



MIAMI BEACH



Trusted Partners Delivering Value, Today and Tomorrow

Miami-Dade County Renourishment Project

U.S. Army Corps of Engineers
Jacksonville District
January 5, 2017



MIAMI BEACH





Project Purpose



BUILDING STRONG

- coastal storm risk management
- beach erosion control
- hurricane surge protection





Beach Renourishment Benefits



BUILDING STRONG

- protect infrastructure
- preserve the environment for wildlife
- support the economy (tourism)
- recreational value
- build coastal resiliency





Overview of Federal Project



BUILDING STRONG



- Main Segment: 10.5 miles in length. Initial construction of this segment began in 1975.
- Sunny Isles Segment: 2.5 miles in length. The segment was initially constructed in 1988.



Miami-Dade County Master Plan

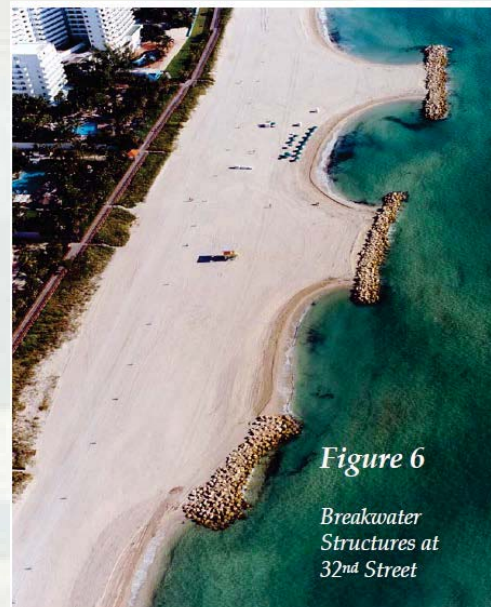


BUILDING STRONG

Comprehensive summary of the current status of the beach, and identifies needs and solutions for future management of the shoreline

7 Hotspots

- 1) North end of Sunny Isles
- 2) Bal Harbour
- 3) 63rd Street
- 4) 55th Street
- 5) 44th Street
- 6) 32nd Street
- 7) North of Government Cut



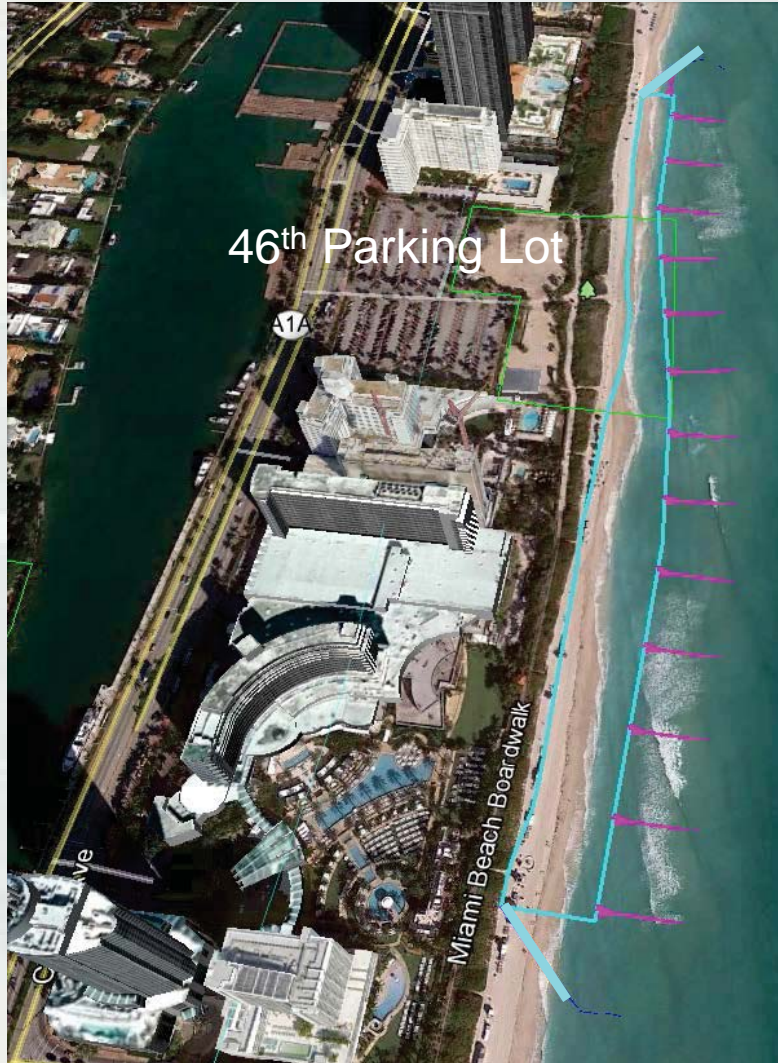
Recommendations for managing these hotspots range from no action, to structural solutions such as breakwaters and groins and beach nourishment



Miami Beach Hotspot Project

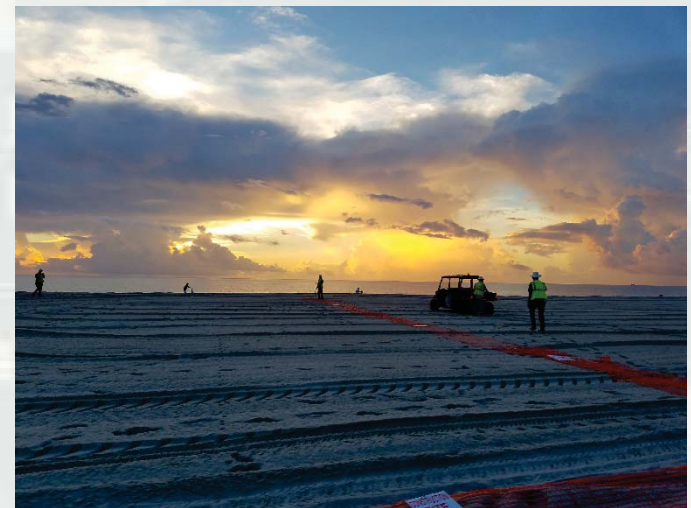


BUILDING STRONG



Location A Beach Fill:

- Vicinity of 46th Street
- 4400-4700 Collins Avenue
- Completed November 2016
- 148,000 cubic yards





Location A



BUILDING STRONG



Trusted Partners Delivering Value, Today and Tomorrow



46th Street pre-project



BUILDING STRONG



Trusted Partners Delivering Value, Today and Tomorrow



46th Street near-complete



BUILDING STRONG



Trusted Partners Delivering Value, Today and Tomorrow



Miami Beach Hotspot Project



BUILDING STRONG



Location B Beach Fill:

- Vicinity of 54th Street
- 5300-5500 Collins Avenue
- Beach fill limits shown in aqua
- Scheduled to begin beachfill week of Jan 9

Staging and Access Area

- 53rd Street Parking lot (Beach View Park)
- Approximate area that will be blocked off is shown in yellow



U.S. ARMY

Location B



BUILDING STRONG



A critically eroded area in the 5400 block of Collins Avenue in Miami Beach will be renourished with beach-quality sand from the south end of the Carriage House Condominium to the north end of the Castle Beach Condominium. The properties immediately to the north and south will also be part of the construction area. (Photo by Mark Bias).

Trusted Partners Delivering Value, Today and Tomorrow



Construction



BUILDING STRONG



Expect to see and hear heavy machinery including dump trucks, bulldozers, backhoes



Some areas of the beach and the parking lots will be fenced off for your protection; please steer clear of all construction zones



Miami Beach Hotspot Project



BUILDING STRONG

Active Construction:

- ▶ Trucks in staging areas running M-F 6 a.m. through 11 p.m.
- ▶ Trucks and equipment on beach M-F 7 a.m. or sunrise, through 7 p.m. or sunset
- ▶ Weekend work also as necessary
- ▶ Location B (54th Street) required to be complete by end of February 2017



What is the Cost for the Project?



BUILDING STRONG

- The contract was awarded to Eastman Aggregate Enterprises, LLC for a total of \$11.9m
- Project is cost shared between the federal government (56.6%) and Miami-Dade County (22.11%) and state of Florida (21.78%)





Protection of Wildlife



BUILDING STRONG

- Monitoring: daily of migratory shorebird and sea turtles (Miami-Dade County and Contractor)
- Relocation: of sea turtle nests out of construction zone
- Equipment Storage: From March 1 through November 30, staging areas for construction equipment must be located off the beach to the maximum extent possible. Nighttime storage of construction equipment not in use must be off the beach to minimize disturbance to sea turtle nesting and hatching activities.
- Beach Fill: material placed on the beach must be analogous to that which occurs naturally within the project location or vicinity in quartz to carbonate ratio, color, median grain size, and median sorting.





Additional Information



BUILDING STRONG

Where can I get more information?

Corps Website

<http://www.saj.usace.army.mil/Missions/Civil-Works/Shore-Protection/Dade-County/Miami-Beach-Hotspots/>

Miami-Dade County Website

<http://www.miamidade.gov/environment/beach-renourishment.asp>



Social Media



BUILDING STRONG

U.S. Army Corps of Engineers Facebook
page: <https://www.facebook.com/JacksonvilleDistrict/>



@JaxStrong @MiamiDadeRER

@MiamiDadeCounty @MiamiBeachNews





Future Project In Sunny Isles



BUILDING STRONG

- Construction expected to take place beginning in September 2017
- Target areas include north end of Sunny Isles and around the pier
- Will also be a Truck Haul project





BUILDING STRONG

Thank you!

Trusted Partners Delivering Value, Today and Tomorrow