

SAN JUAN HARBOR

NORTH END OF PROJECT



CONTRACT #1A
KENNEDY AVE. BRIDGE

DISPOSAL AREA #1

CONTRACT #2D1
DE DIEGO BRIDGE

CONTRACT #2B
ROOSEVELT AVE. BRIDGE

CONTRACT #3A
LAS AMERICAS AND PINERO AVE. BRIDGES

CONTRACT #6
RIO PIEDRAS CHANNEL WORK & DEBRIS BASIN GUARACANAL

SOUTH END OF PROJECT

LEGEND

- MANAGROVE MITIGATION AREAS
- BRIDGE REQUIRING FOUNDATION MODIFICATIONS
- BRIDGE REPLACEMENT
- NEW BRIDGE
- DEBRIS BASIN
- STILLING BASIN
- CONTRACT #1 - PUERTO NUEVO CHANNEL
- CONTRACT #1A - KENNEDY AVE. BRIDGE ISOLATOR BEARINGS
- CONTRACT #2A - MARGARITA EARTH CHANNEL
- CONTRACT #2AA - MARGARITA LEVEE & BECHARA BOX CULVERT
- CONTRACT #2B - ROOSEVELT AVE. BRIDGE
- CONTRACT #2C - MARGARITA CONCRETE CHANNEL
- CONTRACT #2D1 - DEDIEGO BRIDGES OVER RIO PIEDRAS
- CONTRACT #2 D&E - RIO PIEDRAS 1ST MILE OF CHANNEL IMPROVEMENTS
- CONTRACT #3A - LAS AMERICAS AND PINERO AVE. BRIDGES
- CONTRACT #3B - PHASE 3 RIO PIEDRAS STILLING BASIN & CHANNEL WORK
- CONTRACT #4 - RIO PIEDRAS CHANNEL WORK & BUENA VISTA DIVERSION CHANNEL
- CONTRACT #5 - RIO PIEDRAS CHANNEL WORK
- CONTRACT #6 - RIO PIEDRAS CHANNEL WORK & DEBRIS BASIN GUARACANAL

GRAPHIC SCALE
0 500 1000
1" = 900'

RIO PUERTO NUEVO FLOOD CONTROL PROJECT

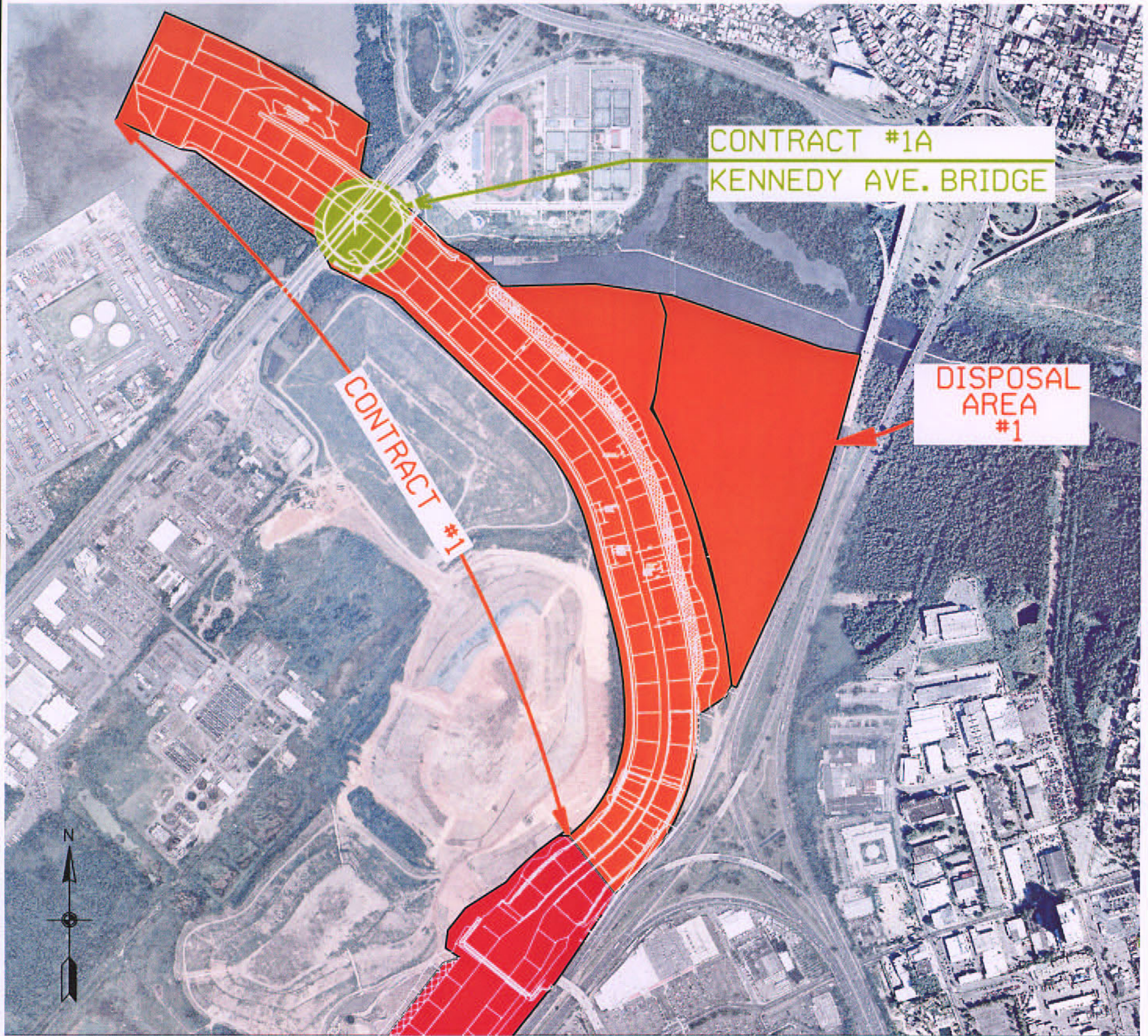


US Army Corps
of Engineers®
Jacksonville District

RIO PUERTO NUEVO FLOOD CONTROL PROJECT

CONTRACTS 1, 1A, 2A, 2AA, 2B, 2D&E & 2D1





CONTRACT I: LOWER RIO PUERTO NUEVO CHANNEL

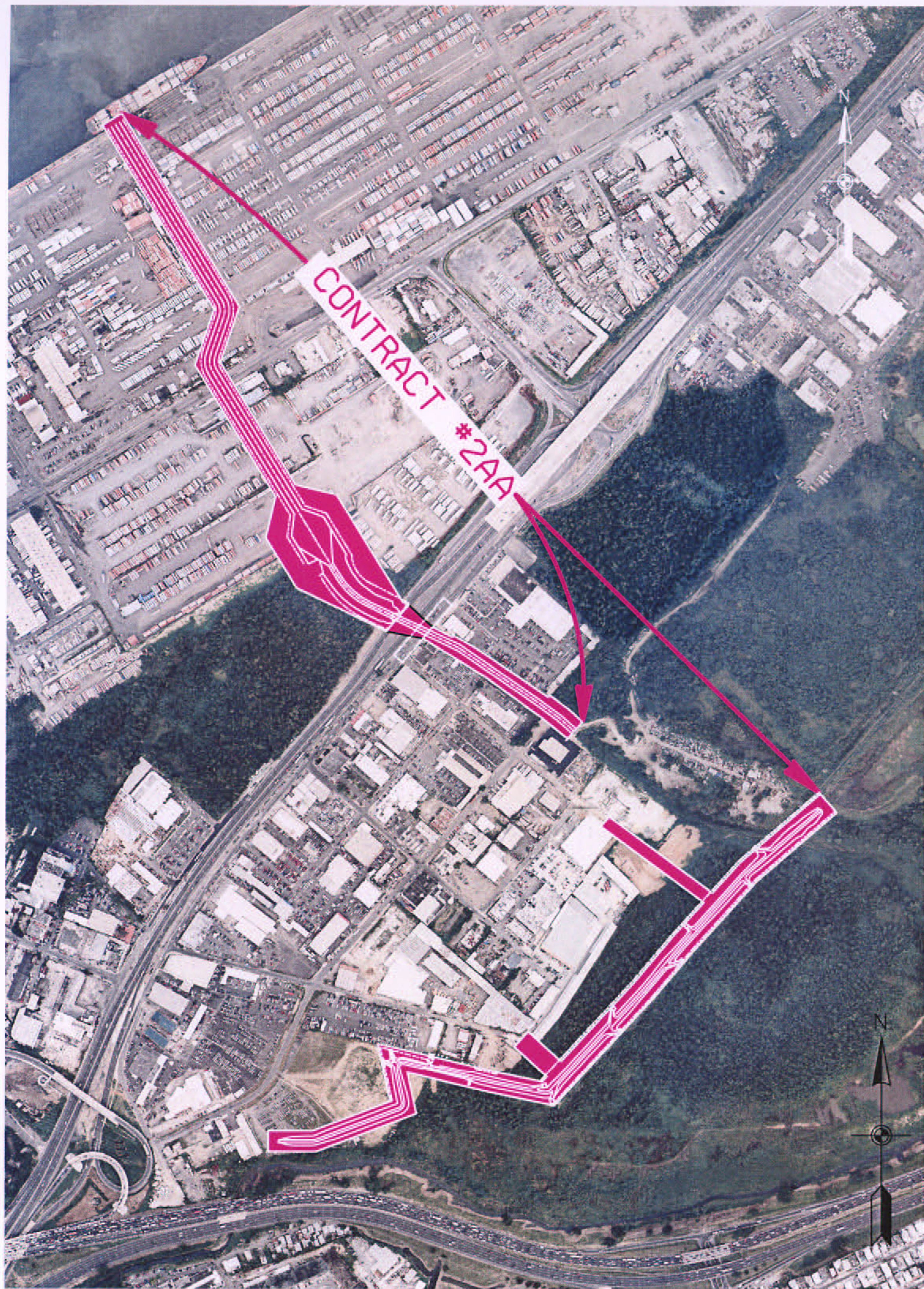
CONTRACT IA: KENNEDY AVENUE BRIDGE SEISMIC RETROFITTING





CONTRACT 2A: MARGARITA EARTH CHANNEL

CONTRACT 2AR: CONTRACT 2A REMAINDER



**CONTRACT 2AA: MARGARITA LEVEE AND
BECHARA BOX CULVERT**

Appendix

RIO PUERTO NUEVO FLOOD CONTROL PROJECT, SAN JUAN, PUERTO RICO

B.3

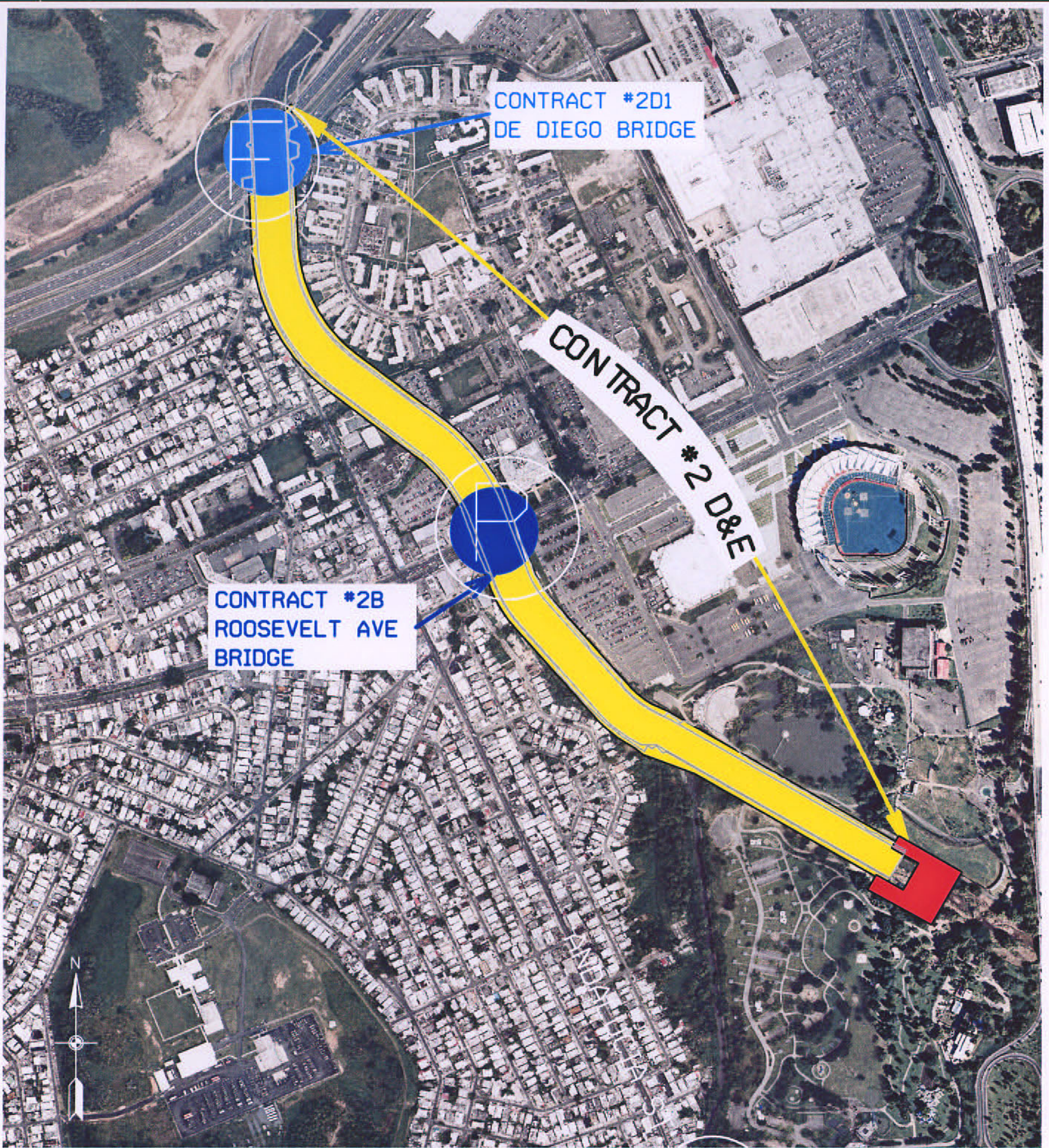
PROJECT MANAGEMENT PLAN

DEPARTMENT OF THE ARMY
JACKSONVILLE DISTRICT, CORPS OF ENGINEERS
JACKSONVILLE, FLORIDA



US Army Corps
of Engineers
Jacksonville District

07/02/2003



- CONTRACT 2B: ROOSEVELT AVENUE BRIDGE REPLACEMENT AND CHANNEL WORK**
- CONTRACT 2D: LOWER RIO PUERTO NUEVO CHANNEL STATION, CHANNEL WALLS**
- CONTRACT 2DI: DE DIEGO EXPRESSWAY BRIDGE SEISMIC FORTIFICATION**
- CONTRACT 2E: LOWER RIO PUERTO NUEVO CHANNEL STATION, CHANNEL BOTTOM PROTECTION**

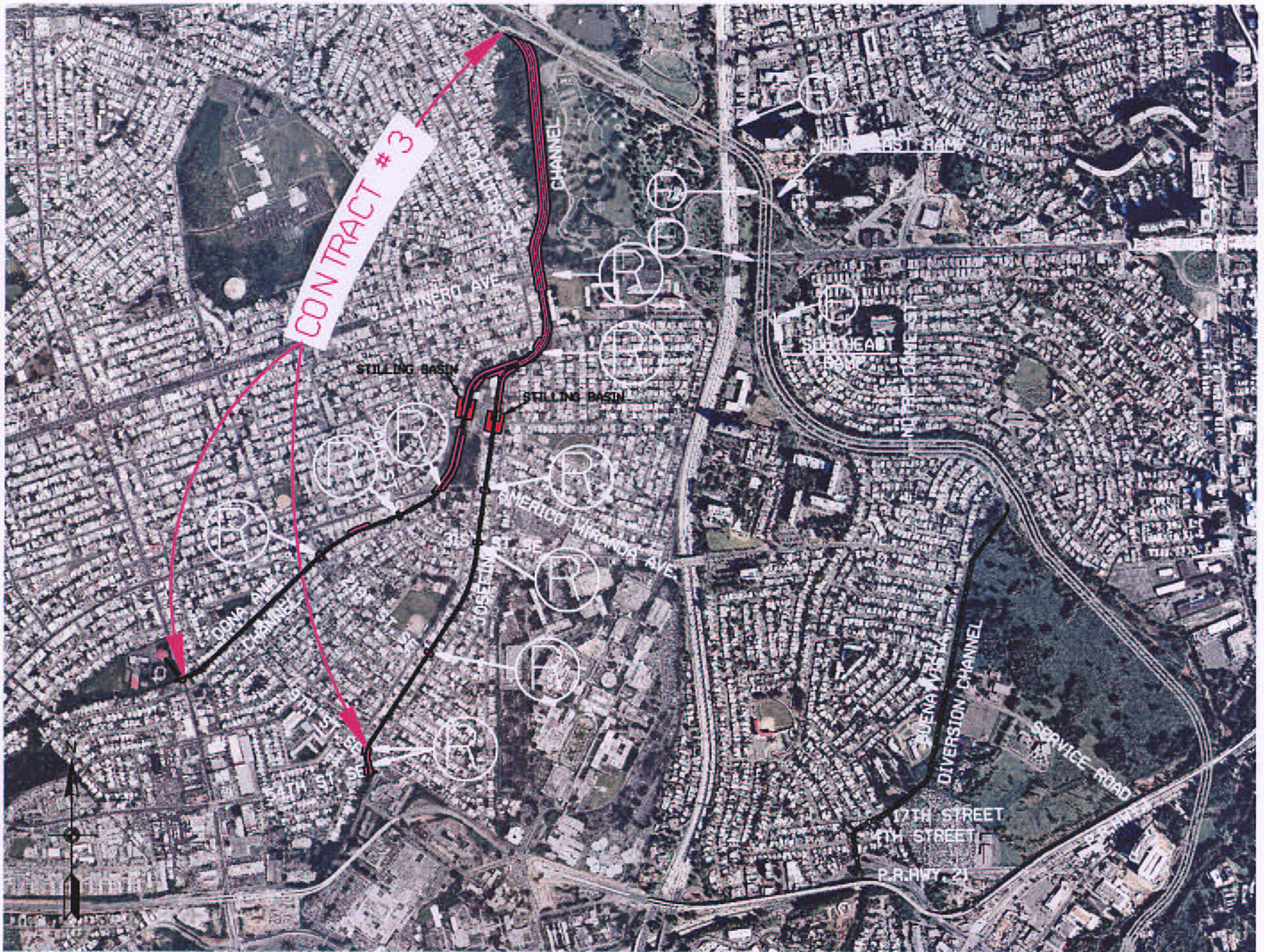




CONTRACT 2C: MARGARITA CONCRETE CHANNEL

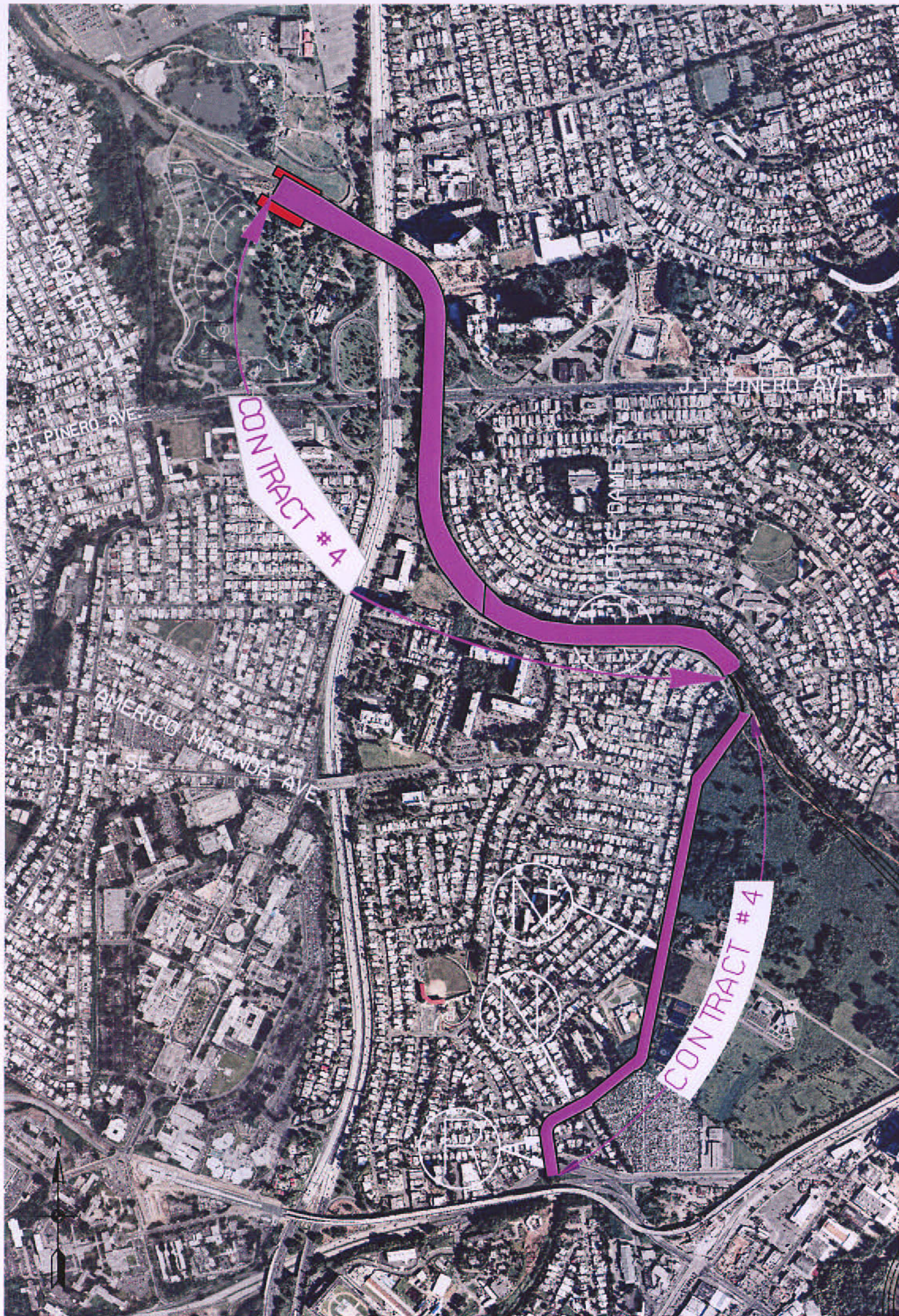
- 2C1 Stilling Basin
- 2C2 Sanitary Line
- 2C3 Concrete Channel





CONTRACT 3: QUEBRADA JOSEFINA AND QUEBRADA DOÑA ANA TRIBUTARIES





**CONTRACT 4: MIDDLE RIO PUERTO NUEVO CHANNEL
STATION AND BUENA VISTA DIVERSION**

Appendix

RIO PUERTO NUEVO FLOOD CONTROL PROJECT, SAN JUAN, PUERTO RICO

B.7

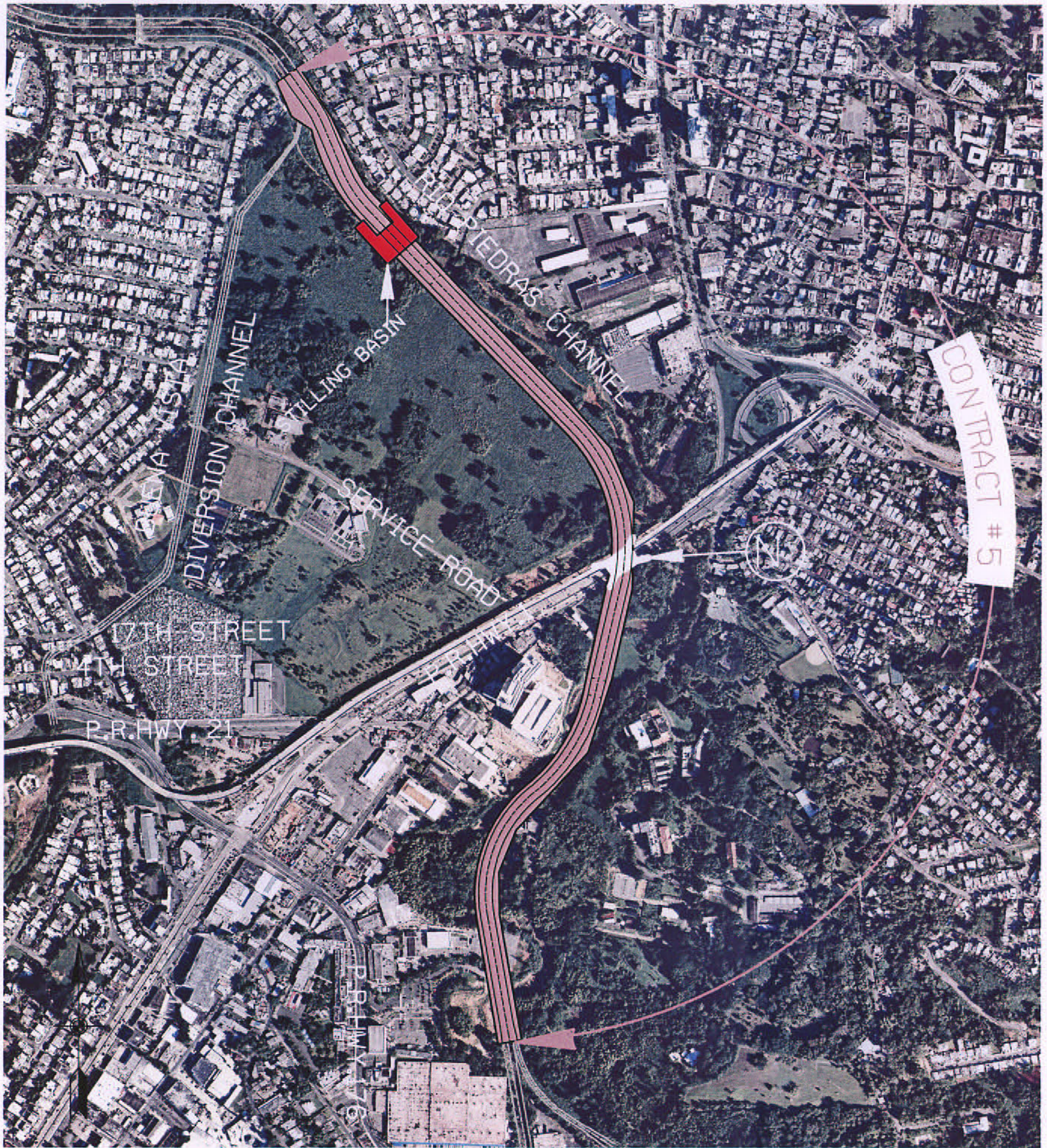
PROJECT MANAGEMENT PLAN

DEPARTMENT OF THE ARMY
JACKSONVILLE DISTRICT, CORPS OF ENGINEERS
JACKSONVILLE, FLORIDA



US Army Corps
of Engineers
Jacksonville District

07/02/2003



CONTRACT 5: MIDDLE PUERTO NUEVO CHANNEL STATION

Appendix

B.8

07/02/2003

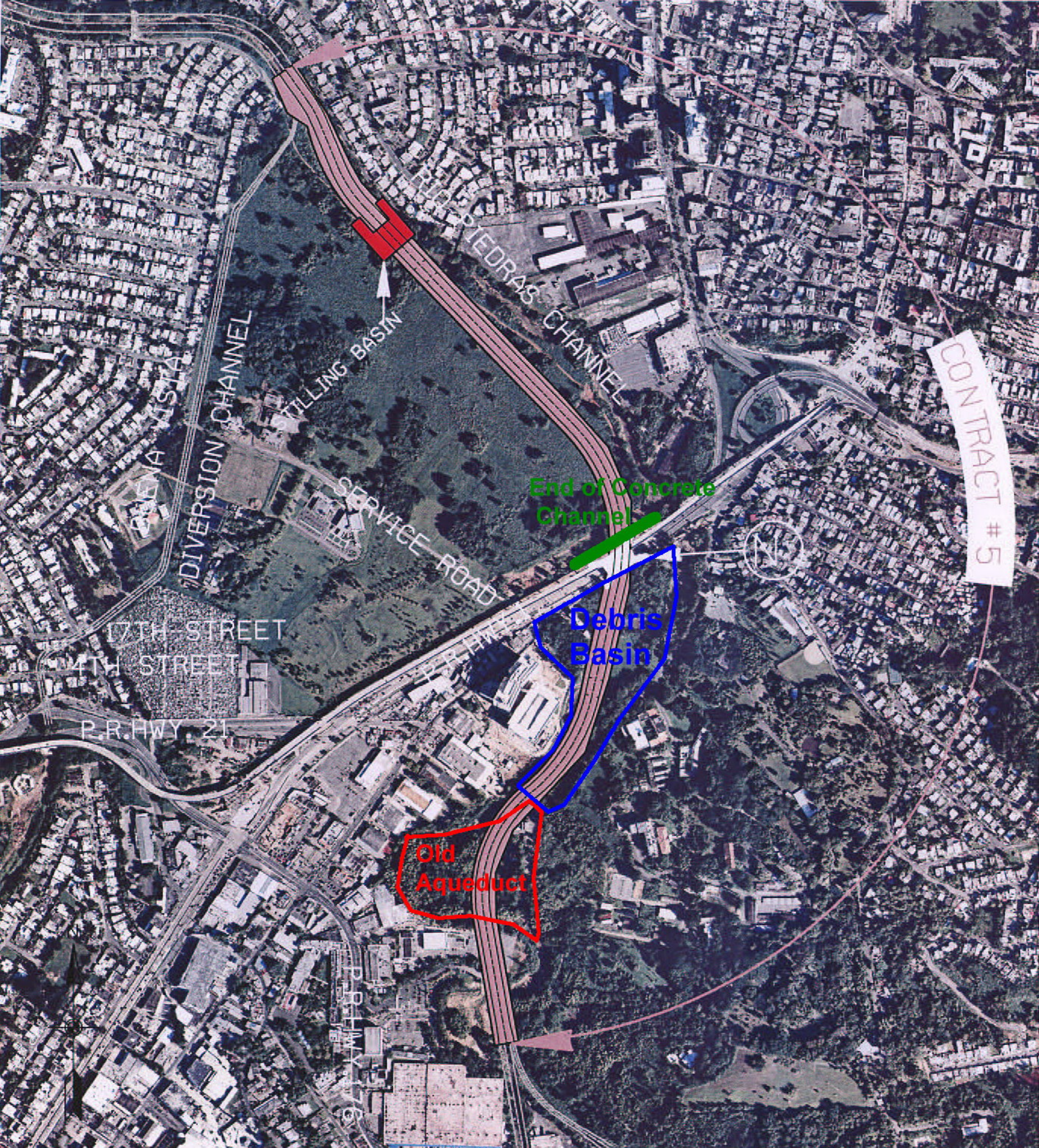
RIO PUERTO NUEVO FLOOD CONTROL PROJECT, SAN JUAN, PUERTO RICO

PROJECT MANAGEMENT PLAN

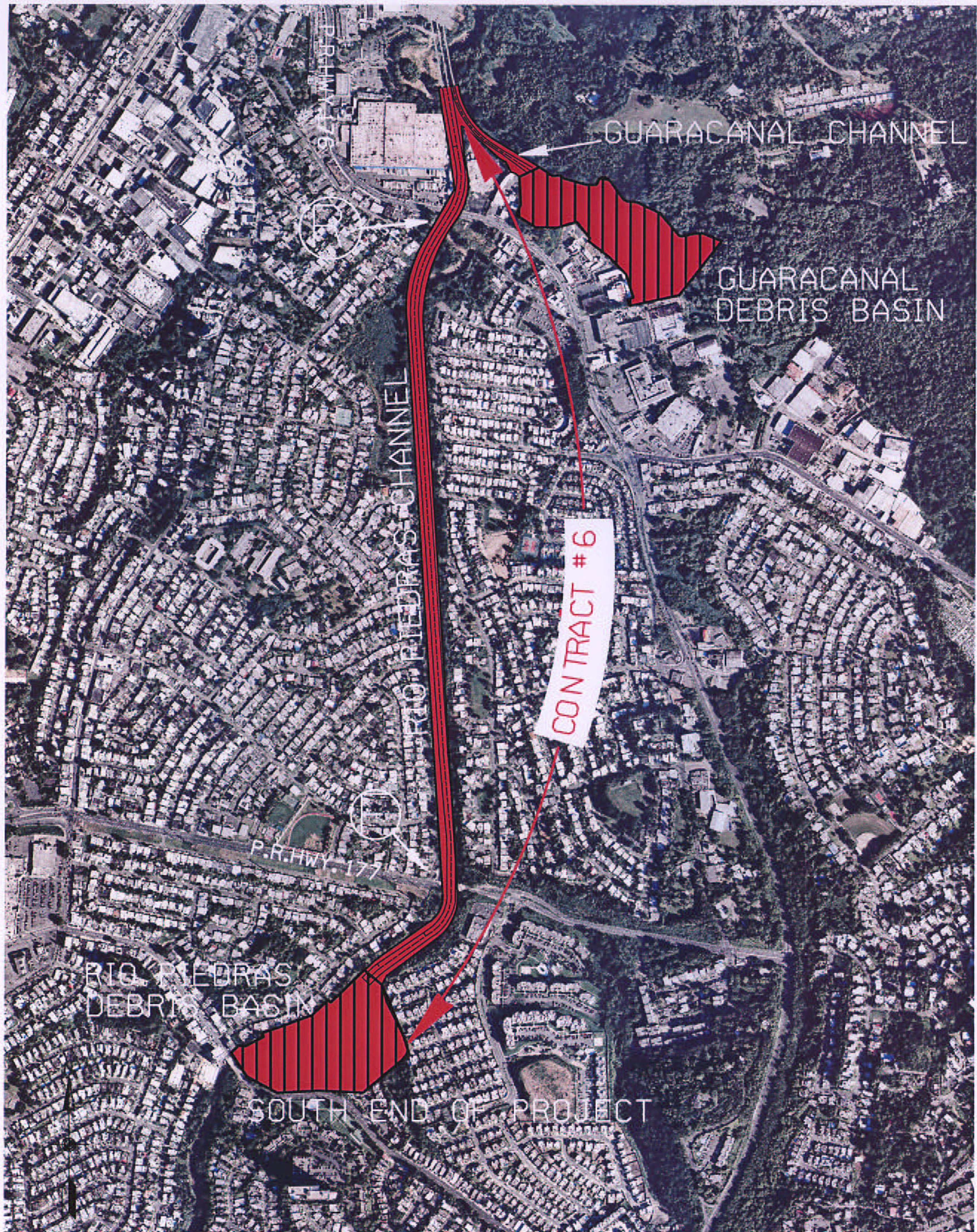
DEPARTMENT OF THE ARMY
 JACKSONVILLE DISTRICT, CORPS OF ENGINEERS
 JACKSONVILLE, FLORIDA



US Army Corps
 of Engineers
 Jacksonville District



CONTRACT 5: MIDDLE PUERTO NUEVO CHANNEL STATION



CONTRACT 6: UPPER PUERTO NUEVO CHANNEL DEBRIS BASIN AND GUARACANAL/DEBRIS BASIN

Appendix

B.9

07/02/2003

RIO PUERTO NUEVO FLOOD CONTROL PROJECT, SAN JUAN, PUERTO RICO

PROJECT MANAGEMENT PLAN

DEPARTMENT OF THE ARMY
 JACKSONVILLE DISTRICT, CORPS OF ENGINEERS
 JACKSONVILLE, FLORIDA



US Army Corps
 of Engineers
 Jacksonville District