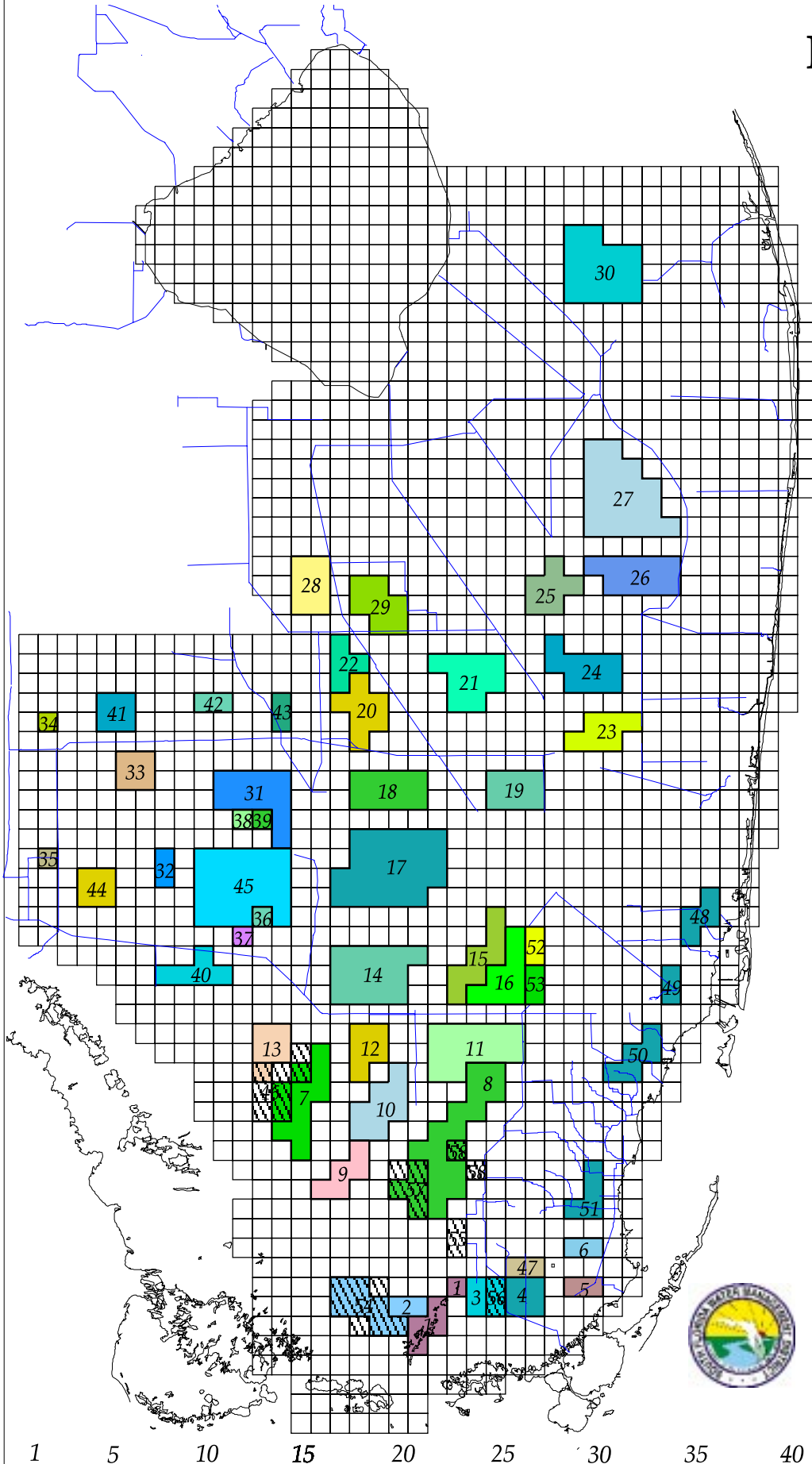


APPENDIX D
HYDROGRAPHS FOR WCA 3A

Page intentionally left blank

Indicator Regions

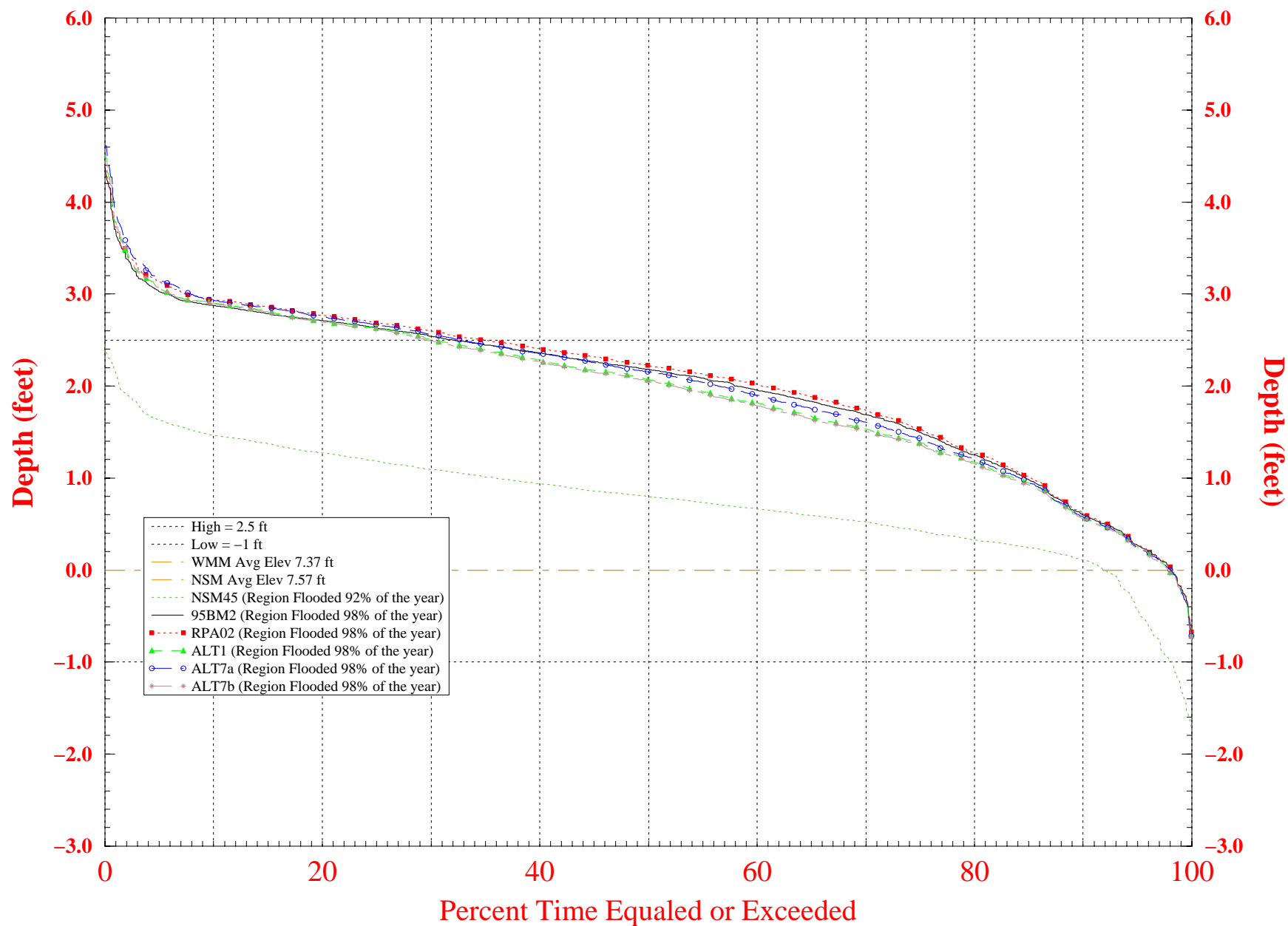
Updated April 13, 1998



- 65 1= Taylor Slough
- 2= West Perrine Marl Marsh
- 3= Mid-Perrine Marl Marsh
- 4= C-111 Perrine Marl Marsh
- 5= Model Lands South
- 60 6= Model Lands North
- 7= Ochopee Marl Marsh
- 8= Rockland Marl Marsh
- 9= SW Shark River Slough
- 55 10= Mid-Shark River Slough
- 11= NE Shark River Slough
- 12= New Shark River Slough
- 13= West Slough
- 14= South WCA-3A
- 50 15= West WCA-3B
- 16= East WCA-3B
- 17= South Central WCA-3A
- 18= North Central WCA-3A
- 45 19= East WCA-3A
- 20= NW WCA-3A
- 21= NE WCA-3A
- 22= NW Corner WCA-3A
- 40 23= WCA-2B
- 24= South WCA-2A
- 25= North WCA-2A
- 26= South WCA-1 (LNWR)
- 35 27= North WCA-1 (LNWR)
- 28= Rotenberger WMA
- 29= Hole Land WMA
- 30 30= Corbett WMA
- 31= Mullet Slough
- 32= Upland Pine
- 33= Upper Mullet Slough
- 34= Cypress Marsh
- 35= Wet Prairie
- 25 36= Wetter Prairie NE
- 37= Wetter Prairie SW
- 38= Drier Cypress NW
- 39= Drier Cypress NE
- 40= Cypress
- 20 41= NW Big Cypress
- 42= NE Big Cypress
- 43= NE Corner Big Cypress
- 44= SW Big Cypress
- 45= Racoon Point
- 15 47= North C-111
- 48= N. Biscayne Bay Groundwater 1
- 10 49= N. Biscayne Bay Groundwater 2
- 50= Central Biscayne Bay Groundwater
- 51= S. Biscayne Bay Groundwater
- 5 52= Pennsuco Wetlands North
- 53= Pennsuco Wetlands South
- 46= Cape Sable Sparrow A
- 54= Cape Sable Sparrow B
- 55= Cape Sable Sparrow C
- 56= Cape Sable Sparrow D
- 57= Cape Sable Sparrow E
- 58= Cape Sable Sparrow F
- 1

Normalized Weekly Stage Duration Curves for South WCA-3A

Indicator Region 14 (R23C17-20 R24C17-20 R25C17-21)

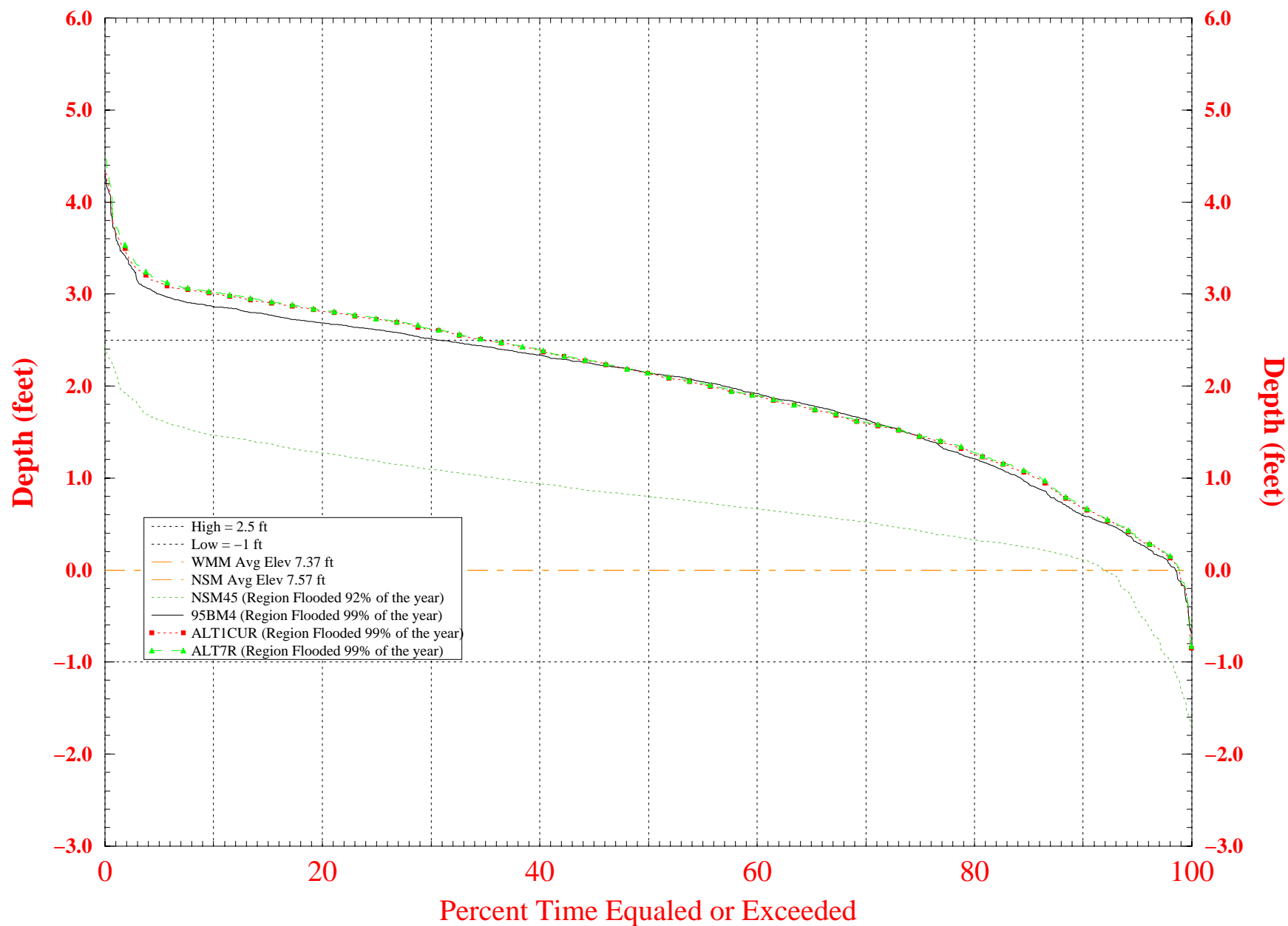


Note: Normalized stage is stage referenced to Land Elevation. Thus, values above zero indicate ponding while values below zero indicate depth to the water table.

Run date: Thu Aug 2 19:17:14 EDT 2001
For Planning Purposes Only
SFWMM V3.4

Normalized Weekly Stage Duration Curves for South WCA-3A

Indicator Region 14 (R23C17-20 R24C17-20 R25C17-21)

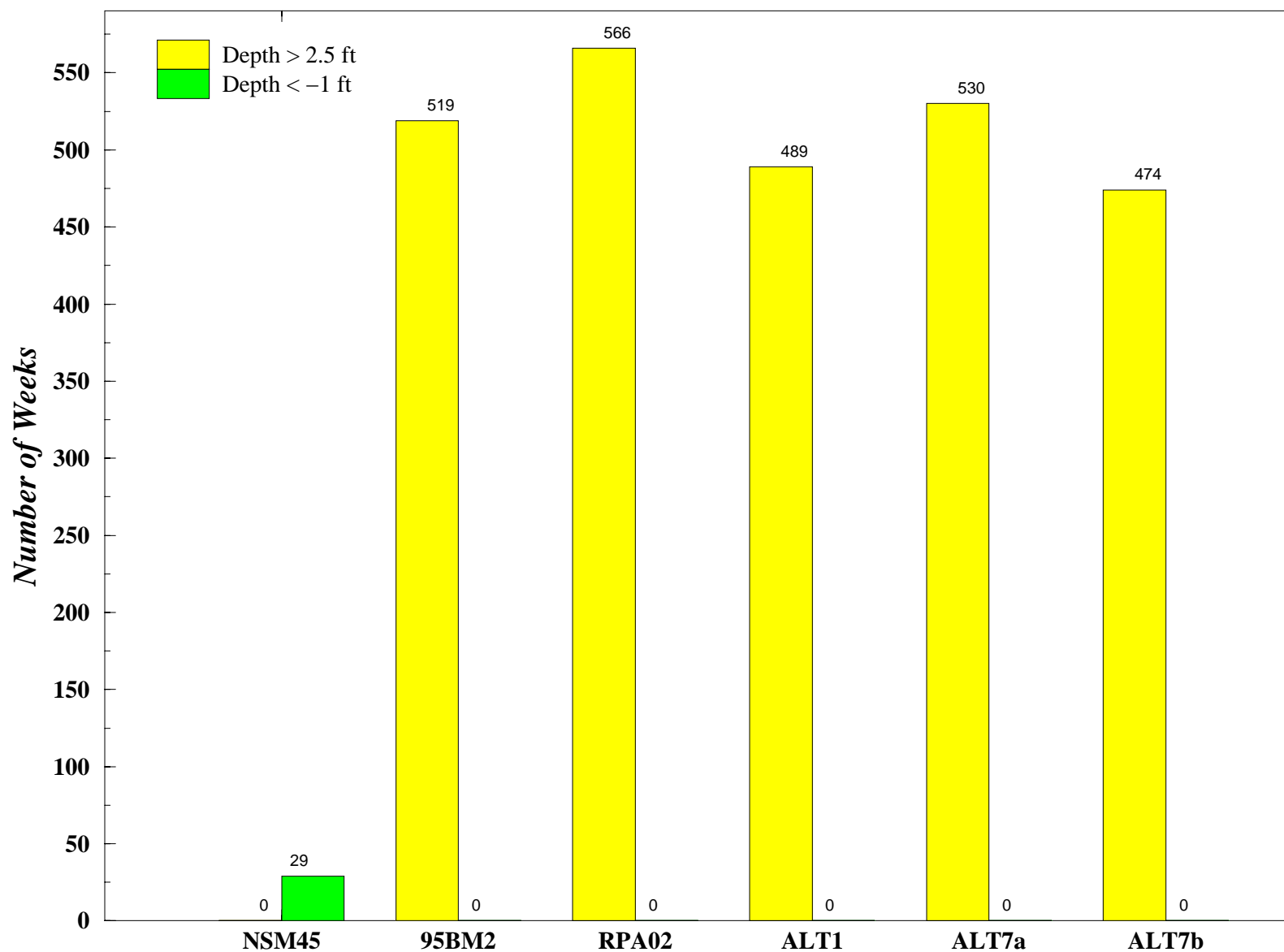


Note: Normalized stage is stage referenced to Land Elevation. Thus, values above zero indicate ponding while values below zero indicate depth to the water table.

Run date: Fri Oct 25 16:09:54 EDT 2002
For Planning Purposes Only
SFWMM V3.4

Number of Weeks High/Low Water Depth Criteria Exceeded

Indicator Region 14 (R23C17–20 R24C17–20 R25C17–21)

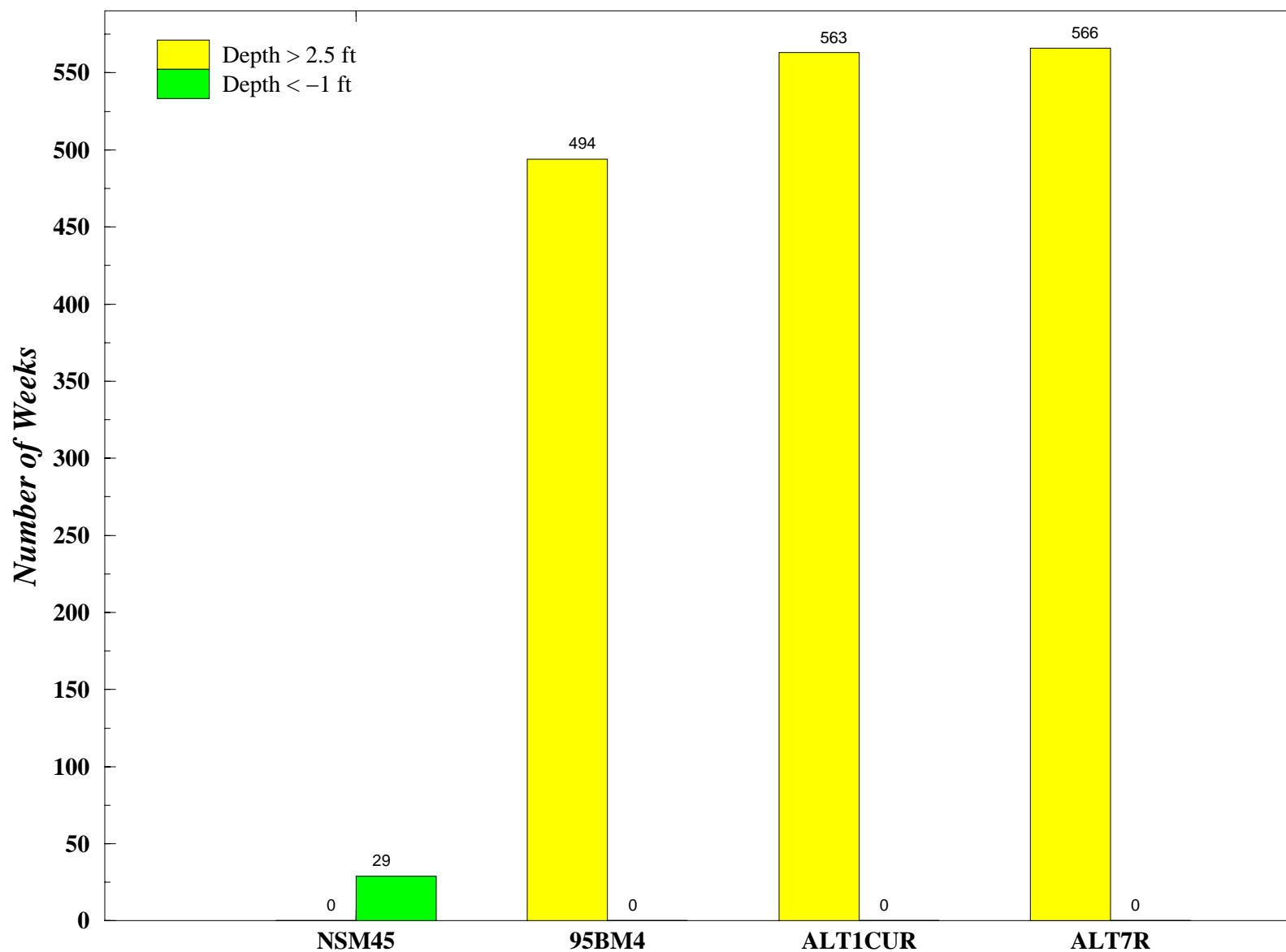


Note: The desired condition is to exceed the high water depth as few times as possible and go below the low water depth as few times as possible.

Run date: Thu Aug 2 19:17:13 EDT 2001
For Planning Purposes Only
SFWMM V3.4

Number of Weeks High/Low Water Depth Criteria Exceeded

Indicator Region 14 (R23C17–20 R24C17–20 R25C17–21)

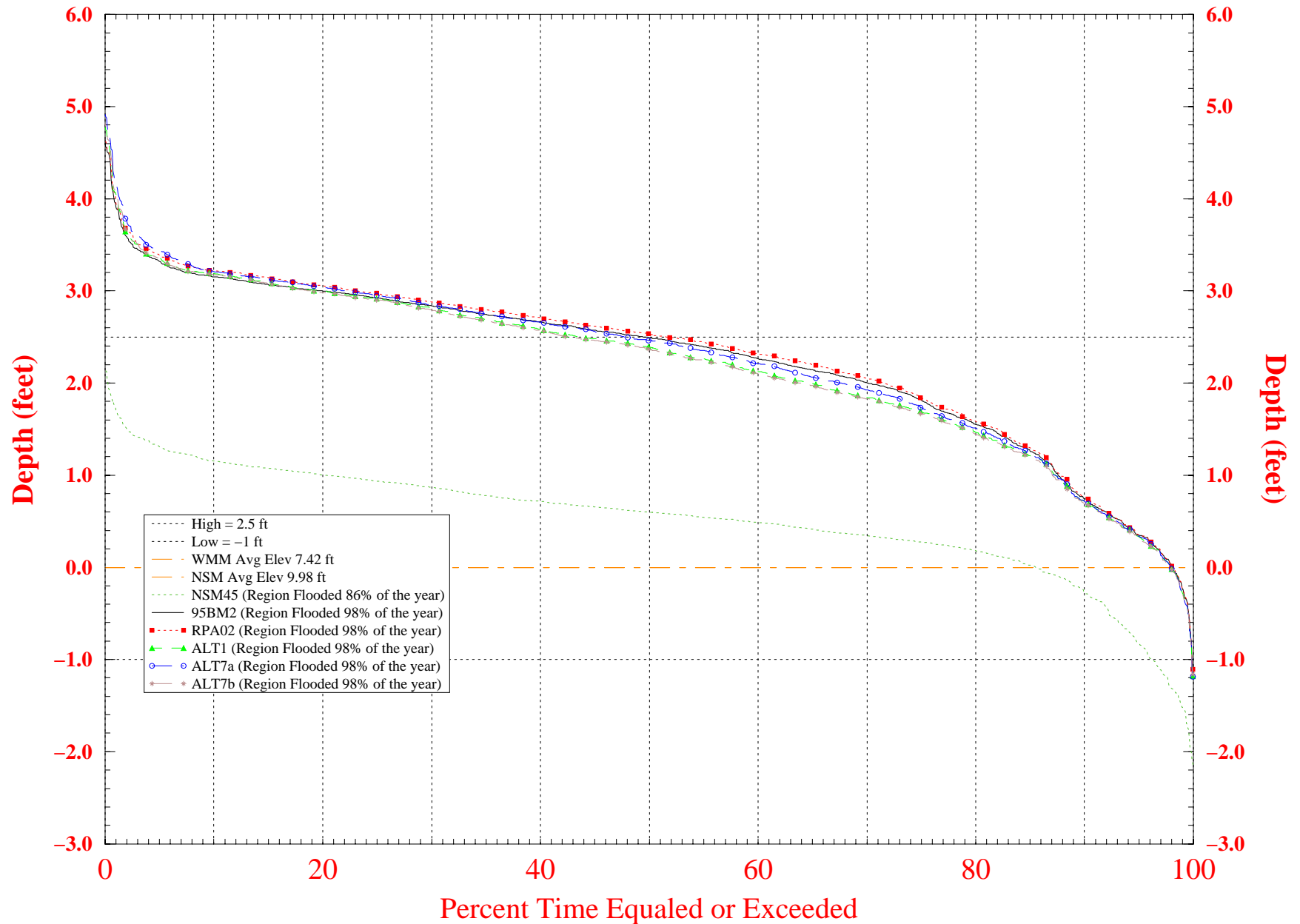


Note: The desired condition is to exceed the high water depth as few times as possible and go below the low water depth as few times as possible.

Run date: Fri Oct 25 16:09:54 EDT 2002
For Planning Purposes Only
SFWMM V3.4

Normalized Weekly Stage Duration Curves for East WCA-3A

Indicator Region 19 (R33C25-27 R34C25-27)

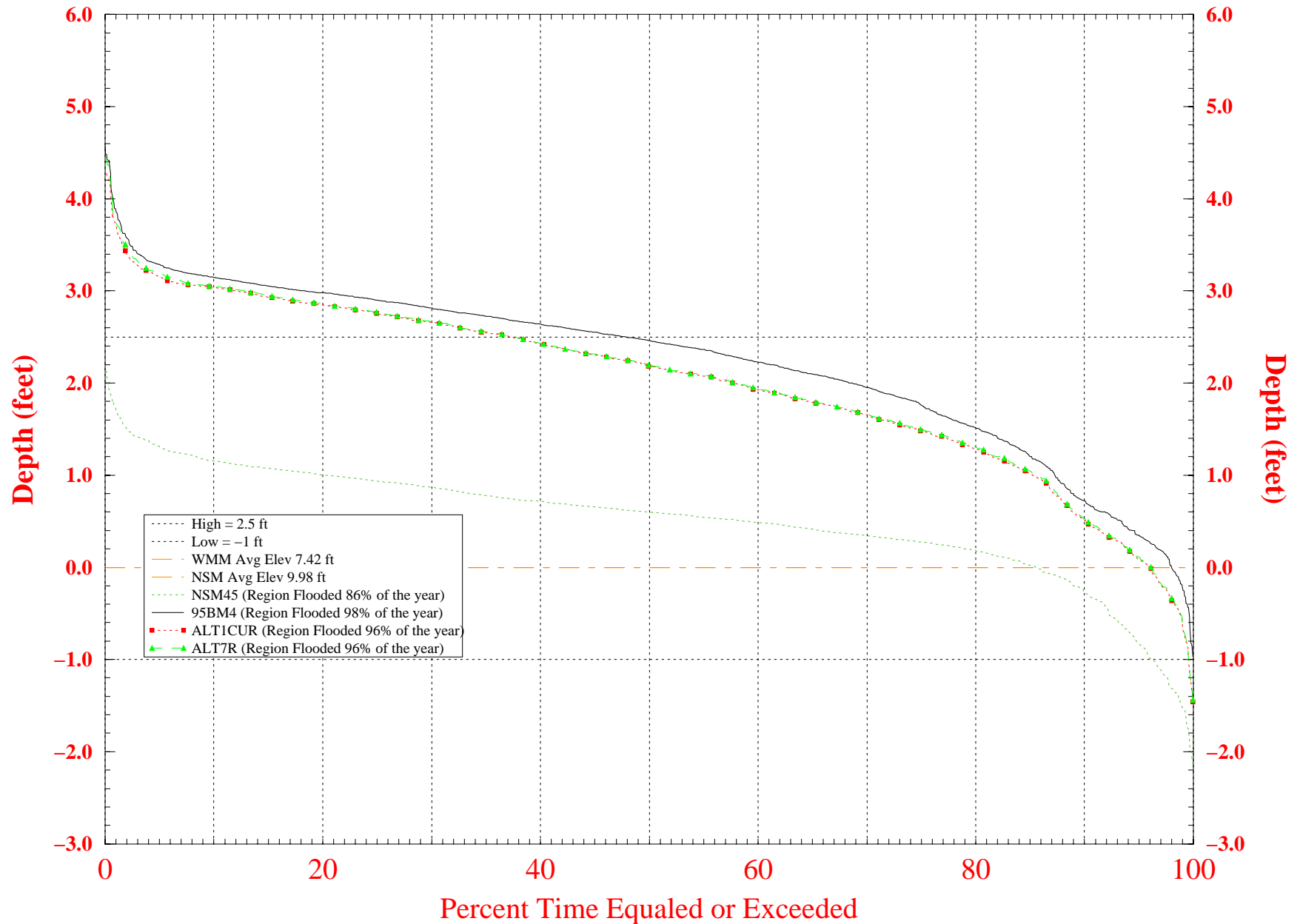


Note: Normalized stage is stage referenced to Land Elevation. Thus, values above zero indicate ponding while values below zero indicate depth to the water table.

Run date: Thu Aug 2 19:17:34 EDT 2001
For Planning Purposes Only
SFWMM V3.4

Normalized Weekly Stage Duration Curves for East WCA-3A

Indicator Region 19 (R33C25-27 R34C25-27)

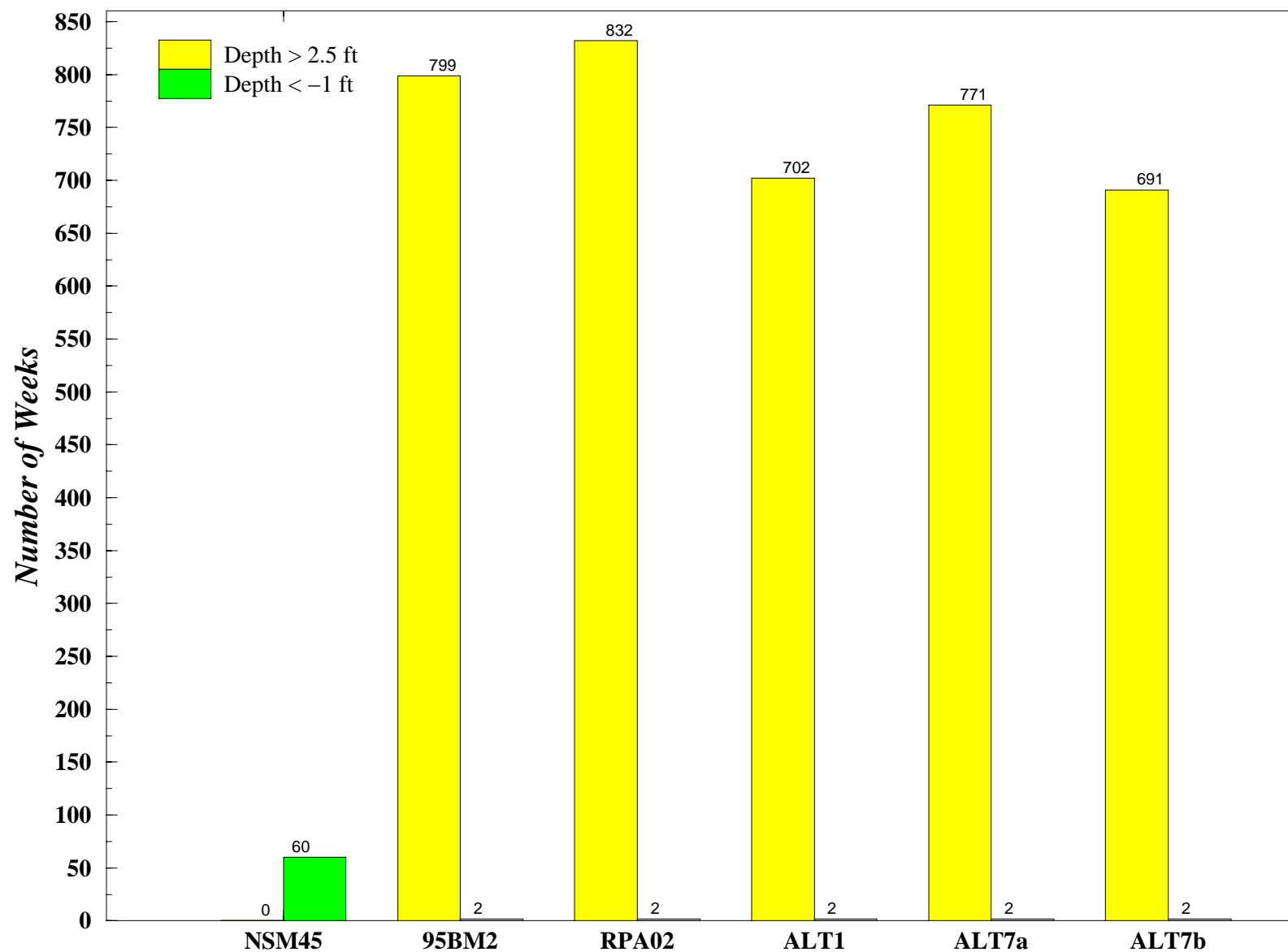


Note: Normalized stage is stage referenced to Land Elevation. Thus, values above zero indicate ponding while values below zero indicate depth to the water table.

Run date: Fri Oct 25 16:10:09 EDT 2002
For Planning Purposes Only
SFWMM V3.4

Number of Weeks High/Low Water Depth Criteria Exceeded

Indicator Region 19 (R33C25–27 R34C25–27)

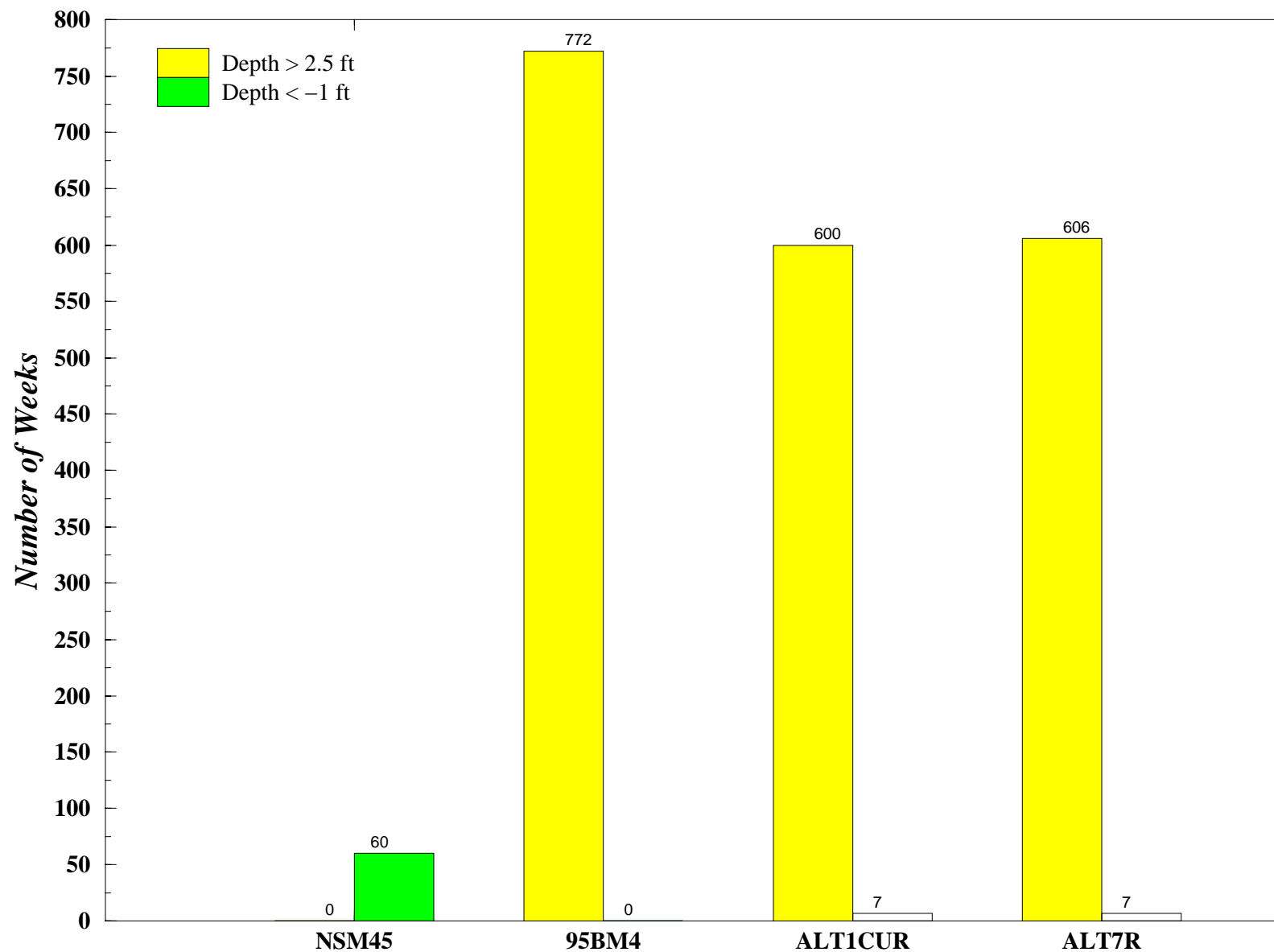


Note: The desired condition is to exceed the high water depth as few times as possible and go below the low water depth as few times as possible.

Run date: Thu Aug 2 19:17:34 EDT 2001
For Planning Purposes Only
SFWMM V3.4

Number of Weeks High/Low Water Depth Criteria Exceeded

Indicator Region 19 (R33C25–27 R34C25–27)



Note: The desired condition is to exceed the high water depth as few times as possible and go below the low water depth as few times as possible.

Run date: Fri Oct 25 16:10:09 EDT 2002
For Planning Purposes Only
SFWMM V3.4