

**DADE COUNTY, FLORIDA
BEACH EROSION CONTROL
& HURRICANE PROTECTION PROJECT**

**LIMITED REEVALUATION REPORT
Public Access and Cost Sharing
Appendix F**

March 2015



**US Army Corps
of Engineers**
Jacksonville District

Appendix F - Dade County SPP LRR: Public Access and Cost Sharing Assessment

I. Overview

Boundaries for each segment are as follows: the Sunny Isles segment extends from FDEP monument R-7 to R-19.3, and the main segment extends from R-19.3 to R-74. The main segment spans from Haulover Beach Park at its northernmost point to Government Cut at its southernmost point. The total project length is approximately 13 miles (2.5 miles attributed to the Sunny Isles segment and 10.5 miles attributed to the main segment).

In the past, the cost sharing for the Sunny Isles portion of the project was determined to be 48.0% Federal, 52.0% non-federal (see page 6 of the 1995 Dade County SPP Design Memorandum, Addendum III). The cost sharing for the main segment of the project was determined to be 51.7% Federal, 48.3% non-federal (see page 75 of the 1975 Dade County Hurricane BEC and Hurricane Surge Protection Project GDM). **Table 1** shows the updated cost sharing estimates. The changes in cost shares from past analyses stem from changes in the development of the project area and changes in shoreline ownership and use.

Table 1: Cost Sharing Summary

| | Previous Federal Share | Previous Non-Federal Share | Updated Federal Share | Updated Non-Federal Share |
|----------------------------|------------------------|----------------------------|-----------------------|---------------------------|
| Sunny Isles Segment | 48.0% | 52.0% | 62.7% | 37.3% |
| Main Segment | 51.7% | 48.3% | 56.6% | 43.4% |

The current cost share estimates are based on policy guidance provided by ER 1105-2-100 Appendix E and ER 1165-2-130. The Water Resources Development Act (WRDA) of 1999 changed the cost sharing policy previously provided by WRDA 1986 by setting a maximum federal share of periodic nourishment carried out after 1 January 2003 to 50% for projects authorized for construction after 31 December 1999. However, because a Chief's report for the Dade County Shore Protection Project was signed prior to 1996, that policy does not apply to this project. Costs assigned to developed lands (publicly or privately owned) are cost shared 65% Federal and 35% non-federal. Benefits from prevention of damages to transportation facilities are considered as storm damage reduction benefits according to ER 1165-2-130 and are cost shared 65%. "Transportation facilities" in the project area include street ends. Costs assigned to undeveloped, publicly owned lands are cost shared 50% Federal and 50% non-federal. Costs assigned to undeveloped, privately owned lands are not federally cost shared (100% non-federal). Note that, for the purposes of this report, "developed" indicates the presence of buildings and/or other infrastructure such as roadways. Parks, parking lots, and vacant lots are not considered to be "developed" lands. If lands are not within ¼ mile of public access and either (a) public parking or (b) a bus stop, then the associated costs will be 100% non-federal.

II. Sunny Isles Segment

The total shoreline length of the Sunny Isles segment, based on shorefront length information provided by the sponsor (verified using Google Earth), is estimated to be 12,940 feet (or 2.5 miles). Public access within ¼ mile of a public bus stop is provided every ½ mile throughout the segment. Paragraph 6h(2) of ER 1165-2-130 states, "...public transportation facilities may substitute for or complement parking facilities." Therefore, all properties in this segment are eligible to be considered

for Federal cost sharing. Additional to the public bus stops, metered public parking is located within the reach as shown in tables below.

There are no federally owned lands in the Sunny Isles segment. There are only two properties that are privately owned and undeveloped. The combined shoreline length of these two properties is 405 feet. The costs associated with these areas are covered 100% by the non-federal sponsor. There is one non-federal area used for parks/recreation in this segment: Samson Oceanfront Park. This park covers 209 feet of shoreline. This area is cost-shared 50% Federal, 50% non-federal. The rest of the properties in the Sunny Isles segment are developed lands, and the cost share for these lands is covered 65% Federal, 35% non-federal. Appendix E of ER 1105-2-100 was used as a reference to determine these shares.

Overall, the cost share for this segment is estimated to be 62.7% Federal, and 37.3% non-federal. This is an increase in the Federal share from the last cost sharing estimate used for this segment. In the 1995 Dade County Shore Protection Project Design Memorandum (Addendum III), the cost-share estimate for this segment was 48.0% Federal, 52.0% non-federal. The change in cost-shares since the 1995 report stems from increased development of the shoreline.

| SUNNY ISLES SEGMENT | | | | |
|---|---|--------------------------------|-------------------------------------|---|
| Shore Ownership and Project Purpose defined in EC 1105-2-100 | (as Maximum Level of Federal Participation in Construction* Costs) | Shoreline Length (feet) | Federal Participation (feet) | non-Federal Participation (feet) |
| I. Federally Owned | 100% | 0 | 0 | 0 |
| II. Publically and Privately Owned, Protection Results in Public Benefits | | | | |
| A. Hurricane and Storm Damage Reduction (HSDR) on | 65% | 12,326 | 8,012 | 4,314 |
| B. HSDR on Undeveloped Public Lands** | 50% | 209 | 104 | 104 |
| C. Separable Recreation | 50% | 0 | 0 | 0 |
| III. Privately Owned, Developed, Use Limited to Private Interests (No public access within 1/4 mile) | 0% | 0 | 0 | 0 |
| IV. Privately Owned, Undeveloped | 0% | 405 | 0 | 405 |
| | | | | |
| | Total Distance: | 12,940 | 8,116 | 4,824 |
| | | Cost Shares: | 62.7% | 37.3% |

*Periodic nourishment is considered "construction."

**Non-Federal public shores dedicated to recreation or fish and wildlife purposes.

| Tax Parcel Number | Shoreline length (feet) | Description | Ownership | Within 1/4 Mile of Access | Shoreline Ownership and Project Purpose | Level of Federal Part. | Federal Participation X Shoreline length | Parking Spaces (#) or Served by Public Bus | | | |
|----------------------------|-------------------------|-------------|------------------------|---------------------------|---|------------------------|--|--|-----|-------|-----|
| SUNNY ISLES SEGMENT | | | | | | | | | | | |
| 3122020050010 | 6940 | Developed | Private | Yes | IIA | 65% | 4510.8 | bus | | | |
| 3122020410010 | | Developed | Private | Yes | IIA | | | 23 | | | |
| 3122020340001 | | Developed | Private | Yes | IIA | | | bus | | | |
| 3122020420001 | | Developed | Private | Yes | IIA | | | bus | | | |
| 2122020160001 | | Developed | Private | Yes | IIA | | | bus | | | |
| 3122020140001 | | Developed | Private | Yes | IIA | | | bus | | | |
| 3122020430001 | | Developed | Private | Yes | IIA | | | bus | | | |
| 3122020350001 | | Developed | Private | Yes | IIA | | | bus | | | |
| 3122020030140 | | Developed | Private | Yes | IIA | | | bus | | | |
| 3122020400010 | | Developed | Private | Yes | IIA | | | bus | | | |
| 3122020500001 | | Developed | Private | Yes | IIA | | | bus | | | |
| 3122020030190 | | Developed | Private | Yes | IIA | | | bus | | | |
| 3122020030210 | | Developed | Private | Yes | IIA | | | bus | | | |
| 3122020190001 | | Developed | Private | Yes | IIA | | | bus | | | |
| 3122020030220 | | Developed | Private | Yes | IIA | | | bus | | | |
| 3122110800001 | | Developed | Private | Yes | IIA | | | bus | | | |
| 3122110731260 | | Developed | Private | Yes | IIA | | | bus | | | |
| 3122020030281 | | Developed | Private | Yes | IIA | | | bus | | | |
| 3122020170001 | | Developed | Private | Yes | IIA | | | bus | | | |
| 3122110712450 | | Developed | Private | Yes | IIA | | | bus | | | |
| 3122110040340 | | Developed | Private | Yes | IIA | | | bus | | | |
| 3122110620001 | | Developed | Private | Yes | IIA | | | bus | | | |
| 3122110040300 | | Developed | Private | Yes | IIA | | | bus | | | |
| 3122110040160 | | Developed | Private | Yes | IIA | | | bus | | | |
| 3122110040170 | | 209 | Samson Oceanfront Park | Public | Yes | | | IIB | 50% | 104.3 | bus |
| 3122110040210 | | | | Public | Yes | | | IIB | | | bus |
| 3122110040260 | | 817 | Developed | Private | Yes | | | IIA | 65% | 531.1 | bus |
| 3122110741020 | | | Developed | Private | Yes | | | IIA | | | bus |
| 3122110600001 | Developed | | Private | Yes | IIA | bus | | | | | |
| 3122110770001 | Developed | | Private | Yes | IIA | bus | | | | | |
| 3122110040110 | 103 | Undeveloped | Private | Yes | IV | 0% | 0.0 | bus | | | |
| 3122110810001 | 602 | Developed | Private | Yes | IIA | 65% | 391.4 | bus | | | |
| 3122110790001 | | Developed | Private | Yes | IIA | | | bus | | | |
| 3122110040020 | 302 | Undeveloped | Private | Yes | IV | 0% | 0.0 | bus | | | |
| 3122110611840 | 3967 | Developed | Private | Yes | IIA | 65% | 2578.5 | bus | | | |
| 3122140290001 | | Developed | Private | Yes | IIA | | | bus | | | |
| 3122140370001 | | Developed | Private | Yes | IIA | | | bus | | | |
| 3122140000050 | | Developed | Private | Yes | IIA | | | 21 | | | |
| 3122140260180 | | Developed | Private | Yes | IIA | | | bus | | | |
| 3122140270550 | | Developed | Private | Yes | IIA | | | bus | | | |
| 3122140251670 | | Developed | Private | Yes | IIA | | | bus | | | |
| 3122140080251 | | Developed | Private | Yes | IIA | | | bus | | | |
| 3122140330001 | | Developed | Private | Yes | IIA | | | bus | | | |
| 3122140080185 | | Developed | Private | Yes | IIA | | | bus | | | |
| 3122140080190 | | Developed | Private | Yes | IIA | | | bus | | | |
| 3122140080130 | | Developed | Private | Yes | IIA | | | bus | | | |
| 3122140080060 | | Developed | Private | Yes | IIA | | | bus | | | |
| 3122140080050 | | Developed | Private | Yes | IIA | | | bus | | | |
| 3122140080040 | | Developed | Private | Yes | IIA | | | bus | | | |
| 3122140080030 | | Developed | Private | Yes | IIA | | | bus | | | |
| 3122140220070 | | Developed | Private | Yes | IIA | | | bus | | | |

Shoreline images for the Sunny Isles segment are shown on the following page. Figure 1 shows the key for icons in those images.








| | | | <u>(Federal/Non-Federal)</u> |
|---|---|--|------------------------------|
|  | Developed lands (adequate parking and access) | | (65%/35%) |
|  | Undeveloped public lands (adequate parking and access) | | (50%/50%) |
|  | NO adequate parking and access | | (0%/100%) |
|  | Undeveloped private lands (adequate parking and access) | | (0%/100%) |
|  | Access point WITHOUT parking | | |
|  | Access point WITH parking | | |
|  | Bus stop | | |

Figure 1: Shoreline Images Key

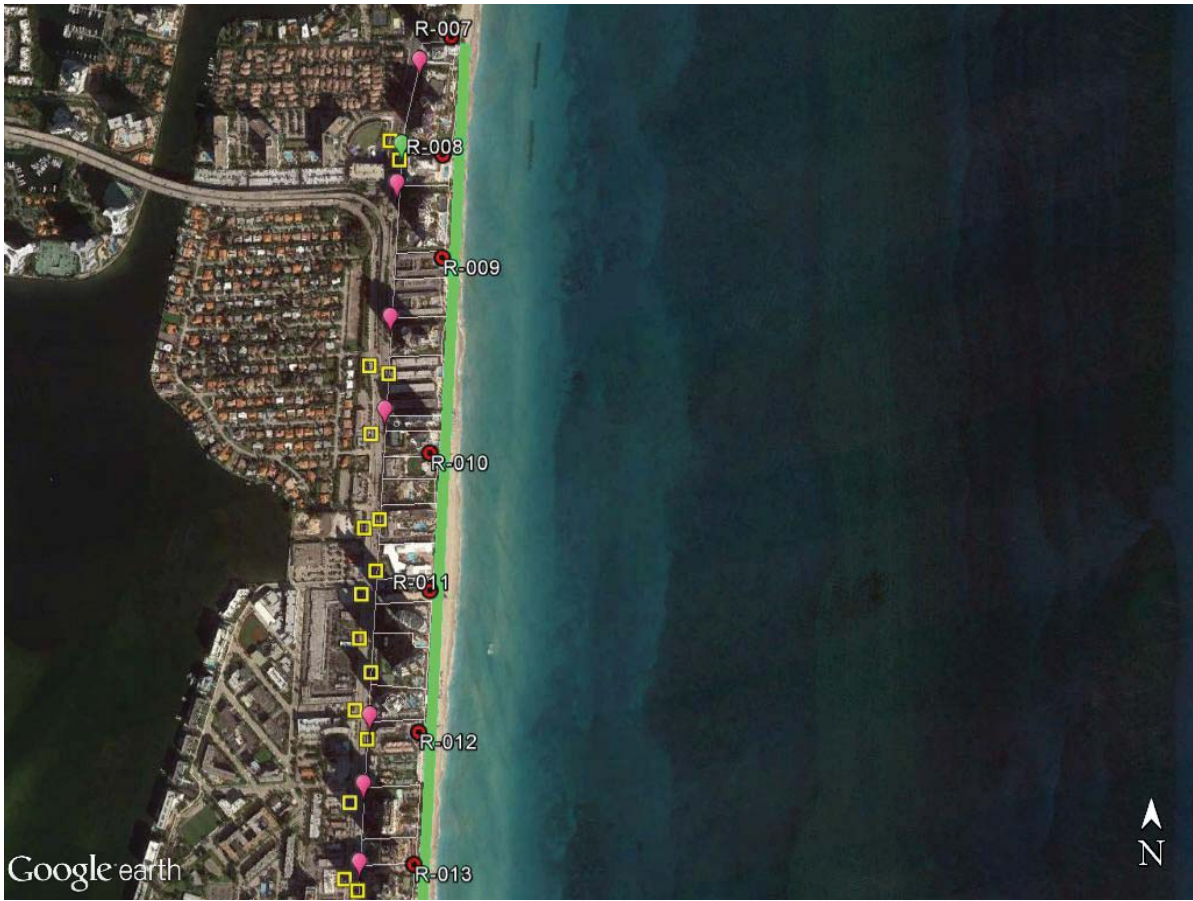


Figure 2: Sunny Isles Segment (R-7 through R-13)

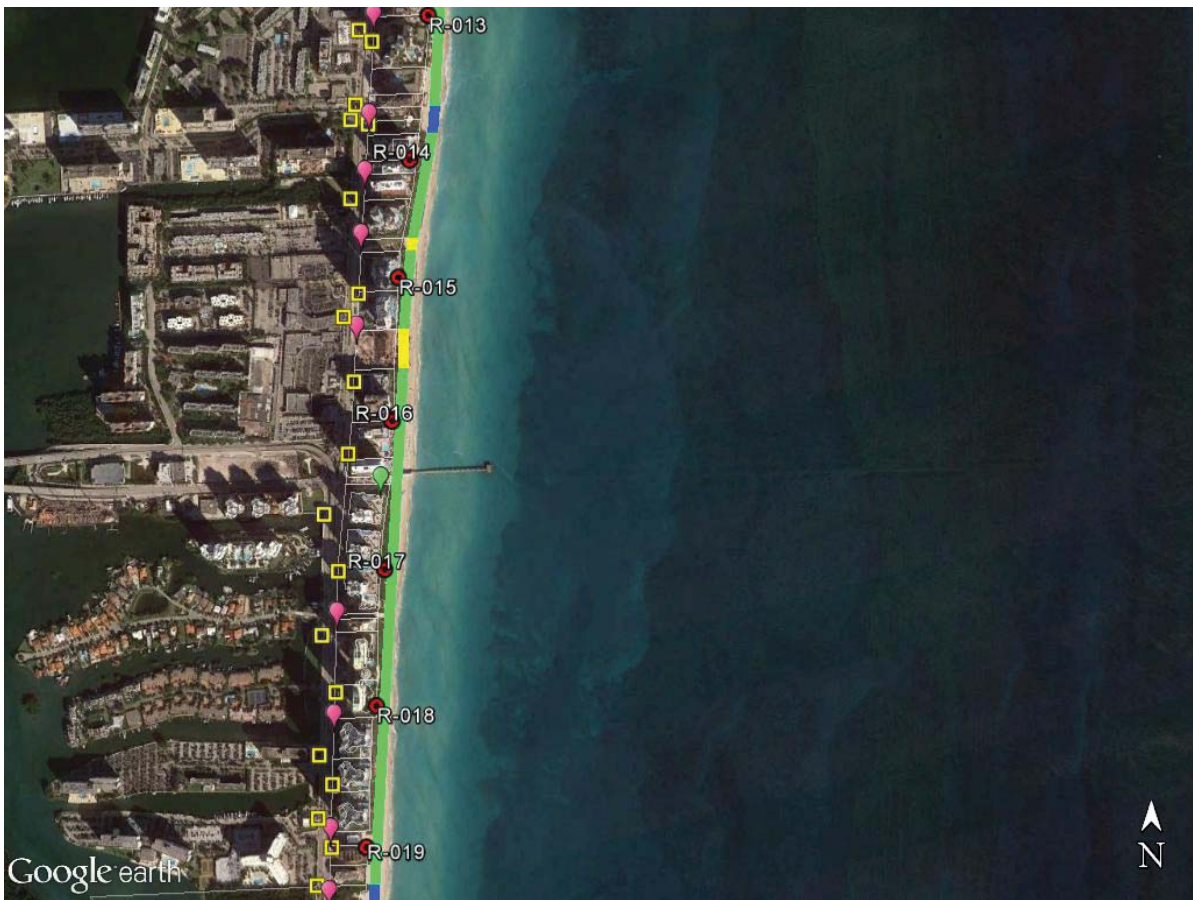


Figure 3: Sunny Isles Segment (R-13 through R-19.3)

III. Main Segment

The total shoreline length of the main segment, based on shorefront length information provided by the sponsor (verified using Google Earth), is estimated to be 55,179 feet (or 10.5 miles). All public accesses are within ¼ mile of a public bus stop throughout the segment making them policy compliant for cost sharing purposes.

Paragraph 6h(2) of ER 1165-2-130 states, "...public transportation facilities may substitute for or complement parking facilities." Additional to the public bus stops, public parking is located within the reach as shown in tables below. Shoreline images of the main segment are shown in Figures 4 through 12.

There are no Federally owned lands in the main segment. There are only three parcels that are privately owned and undeveloped. The combined shorefront length of these properties is 182 feet. These properties are not cost-shared, and therefore the costs associated with these areas are covered 100% by the non-federal sponsor. 15,153 feet of the shoreline in the Main Segment is composed of undeveloped public lands (mainly public parks). This area is cost-shared 50% Federal, 50% non-federal. The rest of the properties in the main segment are developed lands including transportation facilities comprised of street ends, and the cost share for these lands is therefore covered 65% Federal, 35% non-federal. Appendix E and ER 1165-2-130 were used as references to determine these shares.

Overall, the cost share for this segment is estimated to be 56.6% Federal, and 43.4% non-federal. This is higher than the last cost sharing estimate used for this segment. In the 1975 Dade County Hurricane BEC and Hurricane Surge Protection Project General Design Memorandum, the cost-share estimate for this segment was 51.7% Federal, 48.3% non-federal. The change in cost-shares since the 1975 report stems from increased development of the shoreline and changes in shoreline ownership and use.

| MAIN SEGMENT | | | | |
|--|---|-------------------------|------------------------------|----------------------------------|
| Shore Ownership and Project Purpose (as defined in EC 1105-2-100) | Maximum Level of Federal Participation in Construction* Costs | Shoreline Length (feet) | Federal Participation (feet) | non-Federal Participation (feet) |
| I. Federally Owned | 100% | 0 | 0 | 0 |
| II. Publically and Privately Owned, Protection Results in Public Benefits | | | | |
| A. Hurricane and Storm Damage Reduction (HSDR) on Developed Lands | 65% | 36,364 | 23,637 | 12,727 |
| B. HSDR on Undeveloped Public Lands** | 50% | 15,153 | 7,577 | 7,577 |
| C. Separable Recreation | 50% | 0 | 0 | 0 |
| III. Privately Owned, Developed, Use Limited to Private Interests (No public access within 1/4 mile) | 0% | 3,480 | 0 | 3,480 |
| IV. Privately Owned, Undeveloped | 0% | 182 | 0 | 182 |
| | | | | |
| | Total Distance: | 55,179 | 31,213 | 23,966 |
| | | Cost Shares: | 56.6% | 43.4% |

*Periodic nourishment is considered "construction."

**Non-Federal public shores dedicated to recreation or fish and wildlife purposes.

| Tax Parcel Number | Shoreline length (feet) | Description | Ownership | Within 1/4 Mile of Access | Shoreline Ownership and Project Purpose | Level of Federal Participation | Federal Participation X Shoreline length | Parking Spaces (#) | | | |
|---------------------|-------------------------|-----------------------------|------------|---------------------------|---|--------------------------------|--|--------------------|-----|-------|--|
| MAIN SEGMENT | | | | | | | | | | | |
| 3022140080010 | 5657 | Baker's Haulover Inlet Park | Public | Yes | IIB | 50% | 2828.5 | 1640+ | | | |
| 1222260050030 | 1529 | Developed | Private | Yes | IIA | 65% | 993.5 | 160 | | | |
| 1222260431750 | | Developed | Private | Yes | IIA | | | | | | |
| 1222260240010 | | Developed | Private | Yes | IIA | | | | | | |
| 1222260010141 | | Developed | Private | Yes | IIA | | | | | | |
| 1222260220010 | | Developed | Private | Yes | IIA | | | | | | |
| 1222260010190 | | Developed | Private | Yes | IIA | | | | | | |
| 1222260010190 | 1494 | Developed | Private | No | III | 0% | 0.0 | | | | |
| 1222260290010 | | Developed | Private | No | III | | | | | | |
| 1222260260010 | | Developed | Private | No | III | | | | | | |
| 1222260250010 | | Developed | Private | No | III | | | | | | |
| 1222260370010 | | Developed | Private | No | III | | | | | | |
| 1222260340001 | | Developed | Private | No | III | | | | | | |
| 1222260010070 | 1313 | Developed | Private | No | III | 65% | 853.6 | | | | |
| 1222260230010 | | Developed | Private | Yes | IIA | | | | | | |
| 1222260010020 | | Developed | Private | Yes | IIA | | | | | | |
| 1222260010010 | | Developed | Private | Yes | IIA | | | | | | |
| No Parcel Number | 52 | Street End | Public | Yes | IIA | 65% | 33.8 | | | | |
| 1422350420140 | 610 | Developed | Private | Yes | IIA | 65% | 396.3 | | | | |
| 1422350100010 | | Developed | Private | Yes | IIA | | | | | | |
| 1422350070110 | | Developed | Private | Yes | IIA | | | | | | |
| No Parcel Number | 50 | Street End | Public | Yes | IIA | 65% | 32.5 | | | | |
| 1422350450010 | 602 | Developed | Private | Yes | IIA | 65% | 391.6 | | | | |
| 1422350280010 | | Developed | Private | Yes | IIA | | | | | | |
| 1422350070020 | | Developed | Private | Yes | IIA | | | | | | |
| 1422350460010 | | Developed | Private | Yes | IIA | | | | | | |
| No Parcel Number | 52 | Street End | Public | Yes | IIA | 65% | 33.8 | | | | |
| 1422350060200 | 1268 | Developed | Private | Yes | IIA | 65% | 824.2 | | | | |
| 1422350060190 | | Developed | Private | Yes | IIA | | | | | | |
| 1422350060180 | | Developed | Private | Yes | IIA | | | | | | |
| 1422350270010 | | Developed | Private | Yes | IIA | | | | | | |
| 1422350190010 | | Developed | Private | Yes | IIA | | | | | | |
| 1422350080010 | | Developed | Public | Yes | IIA | | | | | | |
| 1422350060100 | | Developed | Public | Yes | IIA | | | | | | |
| 1422350062960 | | Developed | Public | Yes | IIA | | | | | | |
| 1422350170010 | | Developed | Private | Yes | IIA | | | | | | |
| 1422350260010 | | Developed | Private | Yes | IIA | | | | | | |
| 1422350160010 | | Developed | Private | Yes | IIA | | | | | | |
| 1422350440001 | | Developed | Public | Yes | IIA | | | | | | |
| No Parcel Number | | 57 | Street End | Public | Yes | | | IIA | 65% | 37.1 | |
| 1422350430010 | | 1262 | Developed | Private | Yes | | | IIA | 65% | 820.4 | |
| 1422350210010 | Developed | | Private | Yes | IIA | | | | | | |
| 1422350150010 | Developed | | Private | Yes | IIA | | | | | | |
| 1422350120120 | Developed | | Private | Yes | IIA | | | | | | |
| 1422350010010 | Developed | | Private | Yes | IIA | | | | | | |
| No Parcel Number | 63 | Street End | Public | Yes | IIA | 65% | 41.0 | | | | |
| 1422350220010 | 469 | Developed | Private | Yes | IIA | 65% | 304.6 | | | | |
| 1422350090010 | | Developed | Private | Yes | IIA | | | | | | |
| 1422350300010 | | Developed | Private | Yes | IIA | | | | | | |
| 1422350350010 | | Developed | Private | Yes | IIA | | | | | | |
| No Parcel Number | 56 | Street End | Public | Yes | IIA | 65% | 36.4 | | | | |
| 1422350240020 | 526 | Developed | Private | Yes | IIA | 65% | 342.1 | | | | |
| 1422350290010 | | Developed | Private | Yes | IIA | | | | | | |
| 1422350370001 | | Developed | Private | Yes | IIA | | | | | | |
| No Parcel Number | 55 | Street End | Public | Yes | IIA | 65% | 35.8 | | | | |
| 1422350250010 | 199 | Developed | Private | Yes | IIA | 65% | 129.2 | | | | |
| No Parcel Number | 50 | Street End | Public | Yes | IIA | 65% | 32.5 | 26 | | | |
| 0232020060010 | 177 | Developed | Private | Yes | IIA | 65% | 115.1 | | | | |
| No Parcel Number | 50 | Street End | Public | Yes | IIA | 65% | 32.5 | | | | |

| Tax Parcel Number | Shoreline length (feet) | Description | Ownership | Within 1/4 Mile of Access | Shoreline Ownership and Project Purpose | Level of Federal Participation | Federal Participation X Shoreline length | Parking Spaces (#) |
|---------------------|-------------------------|--|-----------|---------------------------|---|--------------------------------|--|--------------------|
| MAIN SEGMENT | | | | | | | | |
| 0232020060020 | 2459 | North Shore Open Space Park | Public | Yes | IIB | 50% | 1229.5 | 10 |
| 0232020060670 | | | Public | Yes | IIB | | | |
| 0232020060070 | | | Public | Yes | IIB | | | |
| 0232020060080 | | | Public | Yes | IIB | | | |
| 0232020060090 | | | Public | Yes | IIB | | | |
| 0232020060100 | | | Public | Yes | IIB | | | |
| 0232020060110 | | | Public | Yes | IIB | | | |
| 0232020060670 | | | Public | Yes | IIB | | | |
| 0232020060120 | | | Public | Yes | IIB | | | |
| 0232020060140 | | | Public | Yes | IIB | | | |
| 0232020060150 | | | Public | Yes | IIB | | | |
| 0232020060670 | | | Public | Yes | IIB | | | |
| 0232020060170 | | | Public | Yes | IIB | | | |
| 0232020060180 | | | Public | Yes | IIB | | | |
| 0232020060190 | | | Public | Yes | IIB | | | |
| 0232020060200 | | | Public | Yes | IIB | | | |
| 0232020060210 | | | Public | Yes | IIB | | | |
| 0232020040010 | | | Public | Yes | IIB | | | |
| 0232020040050 | | | Public | Yes | IIB | | | |
| 0232020040110 | | | Public | Yes | IIB | | | |
| 0232020040150 | 312 | North Shore Open Space Park (Facility Buildings) | Public | Yes | IIA | 65% | 202.8 | |
| No Parcel Number | 50 | Street End | Public | Yes | IIA | 65% | 32.5 | |
| 0232020040180 | 298 | Developed | Private | Yes | IIA | 65% | 193.7 | |
| 0232020040190 | | Developed | Private | Yes | IIA | | | |
| 0232020040200 | | Developed | Private | Yes | IIA | | | |
| 0232020040210 | | Developed | Private | Yes | IIA | | | |
| 0232020040220 | | Developed | Private | Yes | IIA | | | |
| 0232020040230 | | Developed | Private | Yes | IIA | | | |
| No Parcel Number | 50 | Street End | Public | Yes | IIA | 65% | 32.5 | |
| 0232020040240 | 256 | Developed | Private | Yes | IIA | 65% | 166.4 | |
| 0232020040250 | | Developed | Private | Yes | IIA | | | |
| 0232020040260 | | Developed | Private | Yes | IIA | | | |
| 0232020040270 | | Developed | Private | Yes | IIA | | | |
| 0232020040280 | | Developed | Private | Yes | IIA | | | |
| 0232020040290 | 55 | Undeveloped | Private | Yes | IV | 0% | 0.0 | |
| No Parcel Number | 40 | Street End | Public | Yes | IIA | 65% | 26.0 | |
| 0232020040300 | 305 | Undeveloped | Public | Yes | IIB | 50% | 152.5 | |
| 0232020040310 | | Undeveloped | Public | Yes | IIB | | | |
| 0232020040320 | | Undeveloped | Public | Yes | IIB | | | |
| 0232020040330 | | Undeveloped | Public | Yes | IIB | | | |
| 0232020040340 | | Undeveloped | Public | Yes | IIB | | | |
| 0232020040350 | | Undeveloped | Public | Yes | IIB | | | |
| No Parcel Number | 50 | Street End | Public | Yes | IIA | 65% | 32.5 | |
| 0232020040360 | 107 | Undeveloped | Public | Yes | IIB | 50% | 53.5 | |
| 0232020040370 | | Undeveloped | Public | Yes | IIB | | | |
| 0232020040380 | 1357 | Developed | Public | Yes | IIA | 65% | 882.1 | 100 |
| 0232020031250 | | Developed | Public | Yes | IIA | | | |
| 0232020000020 | | Developed | Public | Yes | IIA | | | |
| No Parcel Number | 50 | Street End | Public | Yes | IIA | 65% | 32.5 | |
| 0232110220010 | 302 | Developed | Private | Yes | IIA | 65% | 196.3 | |
| No Parcel Number | 55 | Street End | Public | Yes | IIA | 65% | 35.8 | 12 |
| 0232110020700 | 650 | Developed | Private | Yes | IIA | 65% | 422.5 | |
| 0232110020710 | | Developed | Private | Yes | IIA | | | |
| 0232110260010 | | Developed | Private | Yes | IIA | | | |
| 0232110010010 | | Developed | Private | Yes | IIA | | | |
| 0232110010050 | | Developed | Private | Yes | IIA | | | |

| Tax Parcel Number | Shoreline length (feet) | Description | Ownership | Within 1/4 Mile of Access | Shoreline Ownership and Project Purpose | Level of Federal Participation | Federal Participation X Shoreline length | Parking Spaces (#) |
|---------------------|-------------------------|-------------------|-----------|---------------------------|---|--------------------------------|--|--------------------|
| MAIN SEGMENT | | | | | | | | |
| No Parcel Number | 14 | Street End | Public | Yes | IIA | 65% | 9.1 | |
| 0232110010060 | 959 | Developed | Private | Yes | IIA | 65% | 623.4 | |
| 0232110070460 | | Developed | Private | Yes | IIA | | | |
| 0232110590010 | | Developed | Private | Yes | IIA | | | |
| 0232110070430 | 127 | Undeveloped | Private | Yes | IV | 0% | 0.0 | |
| 0232110070440 | | Undeveloped | Private | Yes | IV | | | |
| 0232110070420 | 1157 | Developed | Private | Yes | IIA | 65% | 752.3 | |
| 0232110070410 | | Developed | Private | Yes | IIA | | | |
| 0232110070400 | | Developed | Private | Yes | IIA | | | |
| 0232110070390 | | Developed | Private | Yes | IIA | | | |
| 0232110800001 | | Developed | Private | Yes | IIA | | | |
| 0232110800001 | | Developed | Private | Yes | IIA | | | |
| 0232110070360 | | Developed | Public | Yes | IIA | | | |
| 0232110070350 | 399 | Allison Park | Public | Yes | IIB | 50% | 199.5 | |
| 0232110070340 | | | Public | Yes | IIB | | | |
| 0232110070330 | | | Public | Yes | IIB | | | |
| 0232110330010 | 3170 | Developed | Private | Yes | IIA | 65% | 2060.4 | |
| 0232110070280 | | Developed | Private | Yes | IIA | | | |
| 0232110640001 | | Developed | Private | Yes | IIA | | | |
| 0232110600001 | | Developed | Private | Yes | IIA | | | |
| 0232110070240 | | Developed | Private | Yes | IIA | | | |
| 0232110520001 | | Developed | Private | Yes | IIA | | | |
| 0232110250001 | | Developed | Private | Yes | IIA | | | |
| 0232110250001 | | Developed | Private | Yes | IIA | | | |
| 0232140300001 | | Developed | Private | Yes | IIA | | | |
| 0232140040010 | | Developed | Private | Yes | IIA | | | |
| 0232140310001 | | Developed | Private | Yes | IIA | | | |
| 0232110510001 | | Developed | Private | Yes | IIA | | | |
| 0232110380001 | | Developed | Private | Yes | IIA | | | |
| 0232140280001 | | Developed | Private | Yes | IIA | | | |
| 0232110160001 | | Developed | Private | Yes | IIA | | | |
| 0232110570001 | | Developed | Private | Yes | IIA | | | |
| 0232110280001 | | 1329 | Developed | Private | No | | | III |
| 0232110620001 | Developed | | Private | No | III | | | |
| 0232140100001 | Developed | | Private | No | III | | | |
| 0232140210001 | Developed | | Private | No | III | | | |
| 0232140210001 | 1297 | Developed | Private | Yes | IIA | 65% | 843.2 | |
| 0232140130001 | | Developed | Private | Yes | IIA | | | |
| 0232140200001 | | Developed | Private | Yes | IIA | | | |
| 0232140250001 | | Developed | Private | Yes | IIA | | | |
| 0232140220001 | | Developed | Private | Yes | IIA | | | |
| 0232140010200 | | Developed | Public | Yes | IIA | | | |
| 0232140010190 | 206 | Undeveloped | Public | Yes | IIB | 50% | 103.0 | 105 |
| 0232140010180 | | Undeveloped | Public | Yes | IIB | | | 105 |
| 0232140070001 | 1328 | Developed | Private | Yes | IIA | 65% | 863.2 | |
| 0232140190001 | | Developed | Private | Yes | IIA | | | |
| 0232140240001 | | Developed | Private | Yes | IIA | | | |
| 0232140010100 | | Developed | Private | Yes | IIA | | | |
| 0232140060001 | | Developed | Private | Yes | IIA | | | |
| 0232140230001 | | Developed | Private | Yes | IIA | | | |
| 0232140230001 | 658 | Developed | Private | No | III | 0% | 0.0 | |
| 0232140180001 | | Developed | Private | No | III | | | |
| 0232140170001 | | Developed | Private | No | III | | | |
| 0232140120001 | | Developed | Private | No | III | | | |
| 0232140120001 | 1321 | Developed | Private | Yes | IIA | 65% | 858.8 | |
| 0232230020135 | | Developed | Private | Yes | IIA | | | |
| 0232230020130 | | Developed | Private | Yes | IIA | | | |
| 0232230170001 | | Developed | Private | Yes | IIA | | | |
| 0232230180001 | | Developed | Private | Yes | IIA | | | |
| 0232230150001 | | Developed | Private | Yes | IIA | | | |
| 0232230020060 | 599 | Indian Beach Park | Public | Yes | IIB | 50% | 299.4 | 300+ |
| 0232230020040 | 2007 | Developed | Private | Yes | IIA | 65% | 1304.6 | |
| 0232230020010 | | Developed | Private | Yes | IIA | | | |
| 0232260012130 | | Developed | Private | Yes | IIA | | | |
| 0232260012140 | | Developed | Private | Yes | IIA | | | |
| 0232260012150 | | Developed | Private | Yes | IIA | | | |
| 0232260012155 | | Developed | Private | Yes | IIA | | | |
| 0232260160001 | Developed | Private | Yes | IIA | | | | |
| No Parcel Number | 50 | Street End | Public | Yes | IIA | 65% | 32.5 | 14 |
| 0232260012060 | 198 | Developed | Private | Yes | IIA | 65% | 128.9 | |
| 0232260380001 | | Developed | Private | Yes | IIA | | | |
| No Parcel Number | 50 | Street End | Public | Yes | IIA | 65% | 32.5 | 12 |
| 0232260180001 | 192 | Developed | Private | Yes | IIA | 65% | 125.0 | |
| 0232260011980 | | Developed | Private | Yes | IIA | | | |
| No Parcel Number | 50 | Street End | Public | Yes | IIA | 65% | 32.5 | 8 |
| 0232260011920 | 200 | Developed | Private | Yes | IIA | 65% | 130.0 | |
| No Parcel Number | 50 | Street End | Public | Yes | IIA | 65% | 32.5 | 12 |
| 0232260011850 | 197 | Developed | Private | Yes | IIA | 65% | 128.3 | |
| No Parcel Number | 50 | Street End | Public | Yes | IIA | 65% | 32.5 | 12 |

| Tax Parcel Number | Shoreline length (feet) | Description | Ownership | Within 1/4 Mile of Access | Shoreline Ownership and Project Purpose | Level of Federal Participation | Federal Participation X Shoreline length | Parking Spaces (#) |
|---------------------|-------------------------|-------------------------------|-----------|---------------------------|---|--------------------------------|--|--------------------|
| MAIN SEGMENT | | | | | | | | |
| 0232260510001 | 203 | Developed | Private | Yes | IIA | 65% | 132.0 | |
| No Parcel Number | 50 | Street End | Public | Yes | IIA | 65% | 32.5 | 10 |
| 0232260520001 | 198 | Developed | Private | Yes | IIA | 65% | 128.7 | |
| No Parcel Number | 55 | Street End | Public | Yes | IIA | 65% | 35.8 | 7 |
| 0232260011580 | 191 | Developed | Private | Yes | IIA | 65% | 124.1 | |
| 0232260080001 | | Developed | Private | Yes | IIA | | | |
| 0232260011560 | | Developed | Private | Yes | IIA | | | |
| No Parcel Number | 50 | Street End | Public | Yes | IIA | 65% | 32.5 | 10 |
| 0232260011490 | 198 | Developed | Public | Yes | IIA | 65% | 128.7 | |
| No Parcel Number | 50 | Street End | Public | Yes | IIA | 65% | 32.5 | 103 |
| 0232260011440 | 203 | Developed | Private | Yes | IIA | 65% | 131.7 | |
| 0232260011425 | 104 | Undeveloped (Public Park) | Public | Yes | IIB | 50% | 52.1 | 40 |
| 0232260011420 | 424 | Developed | Private | Yes | IIA | 65% | 275.6 | |
| 0232260011390 | | Developed | Private | Yes | IIA | | | |
| No Parcel Number | 45 | Street End | Public | Yes | IIA | 65% | 29.3 | 14 |
| 0232260011320 | 209 | Developed | Private | Yes | IIA | 65% | 135.9 | |
| No Parcel Number | 50 | Street End | Public | Yes | IIA | 65% | 32.5 | 10 |
| 0232260011190 | 204 | Developed | Private | Yes | IIA | 65% | 132.6 | |
| No Parcel Number | 45 | Street End | Public | Yes | IIA | 65% | 29.3 | 15 |
| 0232260011070 | 346 | Developed | Private | Yes | IIA | 65% | 224.9 | |
| 0232260011080 | 42 | Street End | Public | Yes | IIA | 65% | 27.3 | |
| 0232260010820 | 35 | Undeveloped | Public | Yes | IIB | 50% | 17.5 | 15 |
| 0232260070001 | 371 | Developed | Private | Yes | IIA | 65% | 241.2 | |
| 0232260011060 | 61 | Undeveloped | Public | Yes | IIB | 50% | 30.5 | 10 |
| 0232260040001 | 454 | Developed | Private | Yes | IIA | 65% | 295.1 | |
| 0232260130001 | | Developed | Private | Yes | IIA | | | |
| 0232260011050 | 40 | Undeveloped | Public | Yes | IIB | 50% | 20.0 | 13 |
| 0232260210001 | 359 | Developed | Private | Yes | IIA | 65% | 233.4 | |
| 0232260011040 | 49 | Undeveloped | Public | Yes | IIB | 50% | 24.5 | 5 |
| 0232260010660 | 442 | Developed | Private | Yes | IIA | 65% | 287.3 | |
| 0232260240001 | | Developed | Private | Yes | IIA | | | |
| 0232260010641 | | Developed | Private | Yes | IIA | | | |
| 0232260140001 | | Developed | Private | Yes | IIA | | | |
| 0232260011030 | 88 | Undeveloped | Public | Yes | IIB | 50% | 44.0 | 10 |
| 0232260010341 | 920 | Developed | Private | Yes | IIA | 65% | 598.0 | |
| 0232342180001 | | Developed | Private | Yes | IIA | | | |
| 0232340160120 | 518 | Mansfield Park (Collins Park) | Public | Yes | IIB | 50% | 259.0 | 100+ |
| 0232260010040 | 250 | Developed | Private | Yes | IIA | 65% | 162.5 | |
| 0232341530001 | | Developed | Private | Yes | IIA | | | |
| No Parcel Number | 55 | Street End | Public | Yes | IIA | 65% | 35.8 | 5 |
| 0232260010020 | 313 | Developed | Private | Yes | IIA | 65% | 203.6 | |
| 0232340710001 | | Developed | Private | Yes | IIA | | | |
| 0232340830001 | | Developed | Private | Yes | IIA | | | |
| 0232340190010 | 72 | Street End | Public | Yes | IIA | 65% | 46.8 | |
| 0232340190470 | | Street End | Public | Yes | IIA | | | |
| 0232340190460 | 507 | Developed | Private | Yes | IIA | 65% | 329.4 | |
| 0232340190510 | | Developed | Private | Yes | IIA | | | |
| 0232340190500 | | Developed | Private | Yes | IIA | | | |
| 0232340190490 | | Developed | Private | Yes | IIA | | | |
| 0232340190480 | | Developed | Private | Yes | IIA | | | |
| 0232340190450 | | Developed | Public | Yes | IIA | | | |
| 0232340190440 | | Developed | Private | Yes | IIA | | | |

| Tax Parcel Number | Shoreline length (feet) | Description | Ownership | Within 1/4 Mile of Access | Shoreline Ownership and Project Purpose | Level of Federal Participation | Federal Participation X Shoreline length | Parking Spaces (#) |
|---------------------|-------------------------|-------------|-----------|---------------------------|---|--------------------------------|--|--------------------|
| MAIN SEGMENT | | | | | | | | |
| 0232340190560 | 73 | Street End | Public | Yes | IIA | 65% | 47.5 | 20 |
| 0232340190550 | 2020 | Developed | Private | Yes | IIA | 65% | 1313.0 | |
| 0232340190540 | | Developed | Private | Yes | IIA | | | |
| 0232340190530 | | Developed | Private | Yes | IIA | | | |
| 0232341230001 | | Developed | Private | Yes | IIA | | | |
| 0232340800001 | | Developed | Private | Yes | IIA | | | |
| 0232340660001 | | Developed | Private | Yes | IIA | | | |
| 0232340190890 | | Developed | Private | Yes | IIA | | | |
| 0232340190960 | | Developed | Private | Yes | IIA | | | |
| 0223341180001 | | Developed | Private | Yes | IIA | | | |
| 0232340190970 | | Developed | Public | Yes | IIA | | | |
| 0232341150001 | Developed | Private | Yes | IIA | | | | |
| 0232030000030 | 595 | Lummus Park | Public | Yes | IIB | 50% | 297.6 | 25 |
| 0232030000030 | 60 | | Public | Yes | IIA | 65% | 38.7 | 25 |
| 0232030000030 | 1706 | | Public | Yes | IIB | 50% | 852.8 | 75 |
| 0232030000030 | 320 | | Public | Yes | IIA | 65% | 208.0 | 25 |
| 0232030000030 | 1785 | | Public | Yes | IIB | 50% | 892.3 | 100 |
| 0242030970001 | 568 | Developed | Private | Yes | IIA | 65% | 369.3 | 7 |
| 0242030120190 | | Developed | Private | Yes | IIA | | | |
| 0242031200001 | | Developed | Private | Yes | IIA | | | |
| No Parcel Number | 46 | Street End | Public | Yes | IIA | 65% | 29.9 | |
| 0242031180001 | 403 | Developed | Private | Yes | IIA | 65% | 261.9 | |
| 0242032060001 | | Developed | Private | Yes | IIA | | | |
| 0242031120001 | | Developed | Private | Yes | IIA | | | |
| 0242032870001 | | Developed | Private | Yes | IIA | | | |
| 0242030570001 | | Developed | Private | Yes | IIA | | | |
| 0242030120100 | 225 | Undeveloped | Public | Yes | IIA | 65% | 146.1 | |
| 0242030120100 | 70 | Developed | Public | Yes | IIA | 65% | 45.7 | |
| 0242030120100 | 216 | Undeveloped | Public | Yes | IIA | 65% | 140.4 | |
| 0242030120030 | 743 | Developed | Private | Yes | IIA | 65% | 483.2 | |
| 0242033480001 | | Developed | Private | Yes | IIA | | | |
| 0242032720001 | | Developed | Private | Yes | IIA | | | |
| 0242030120010 | | Developed | Public | Yes | IIA | | | |
| 0242030120011 | | Developed | Public | Yes | IIA | | | |
| 0242030120010 | | Developed | Public | Yes | IIA | | | |
| No Parcel Number | 75 | Street End | Public | Yes | IIA | 65% | 48.8 | 30 |
| 0242100000137 | 1478 | Developed | Private | Yes | IIA | 65% | 960.7 | |
| 0242100000136 | | Developed | Private | Yes | IIA | | | |
| 0242030120020 | | Developed | Public | Yes | IIA | | | |
| 0242100000040 | | Developed | Public | Yes | IIA | | | |

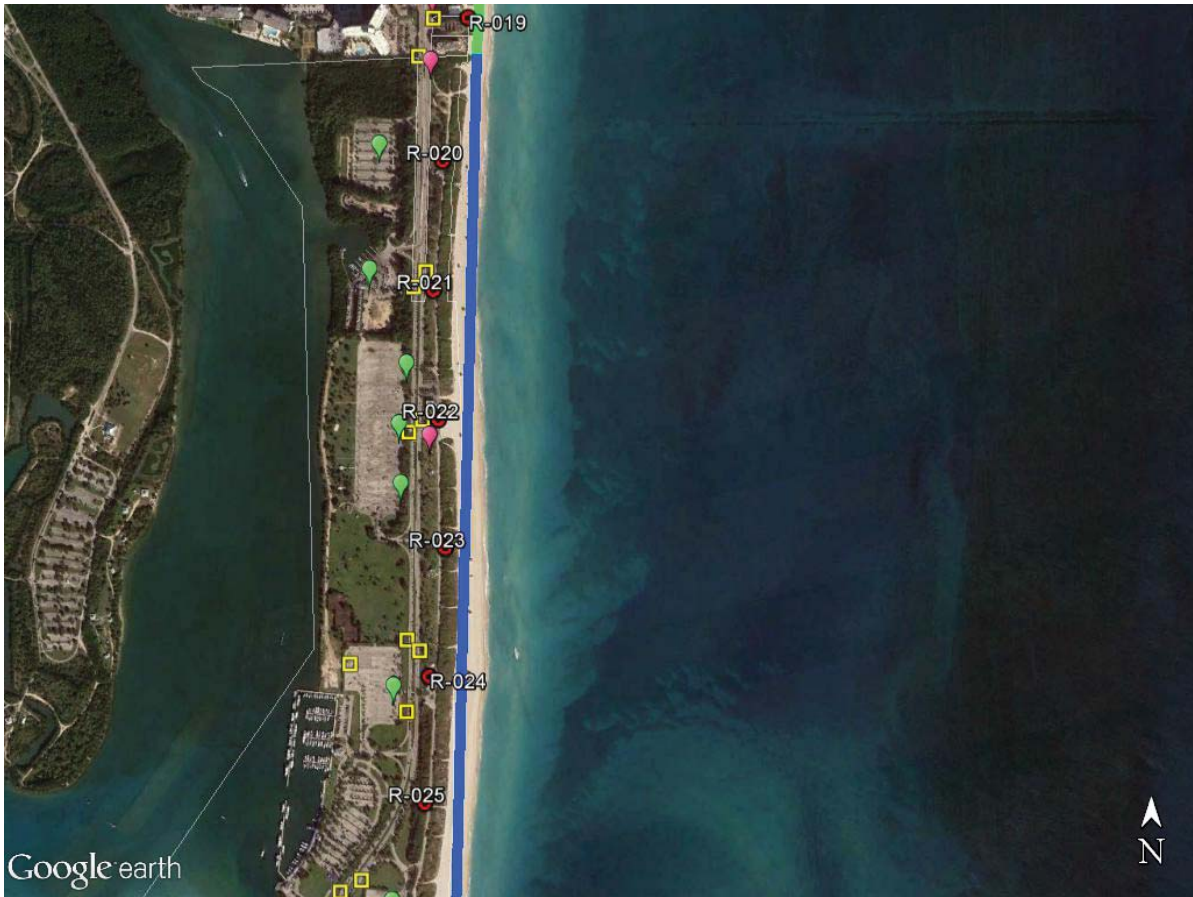


Figure 4: Main Segment (R-19.3 through R-25)

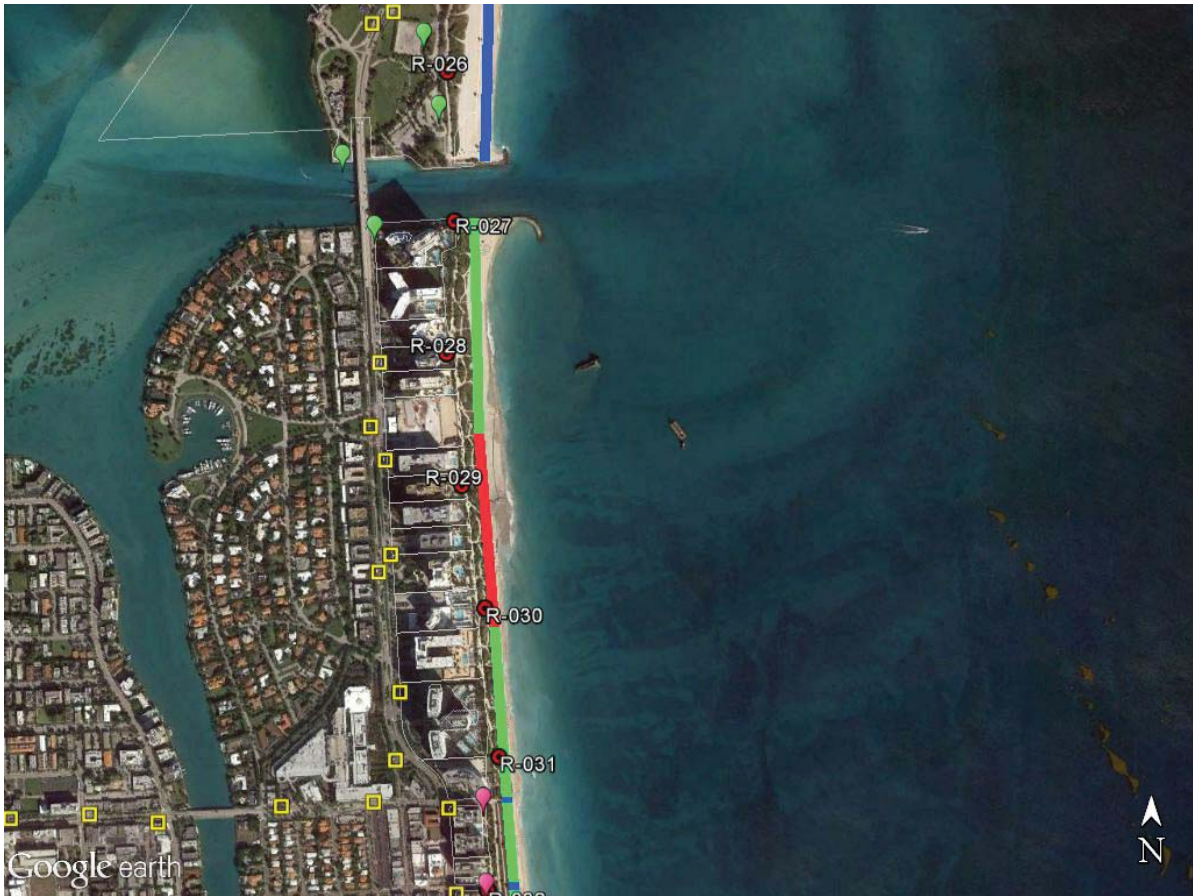


Figure 5: Main Segment (R-26 through R-31)

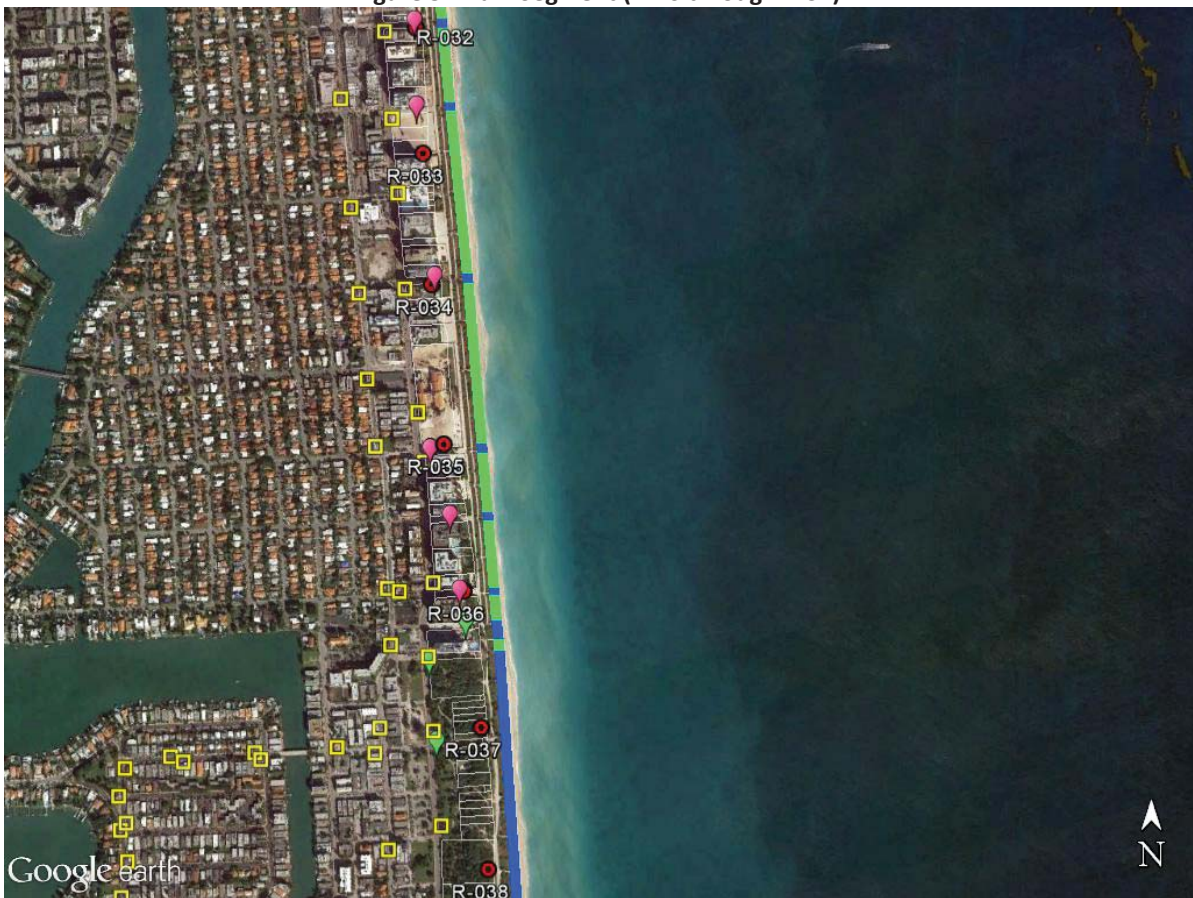


Figure 6: Main Segment (R-32 through R-38)

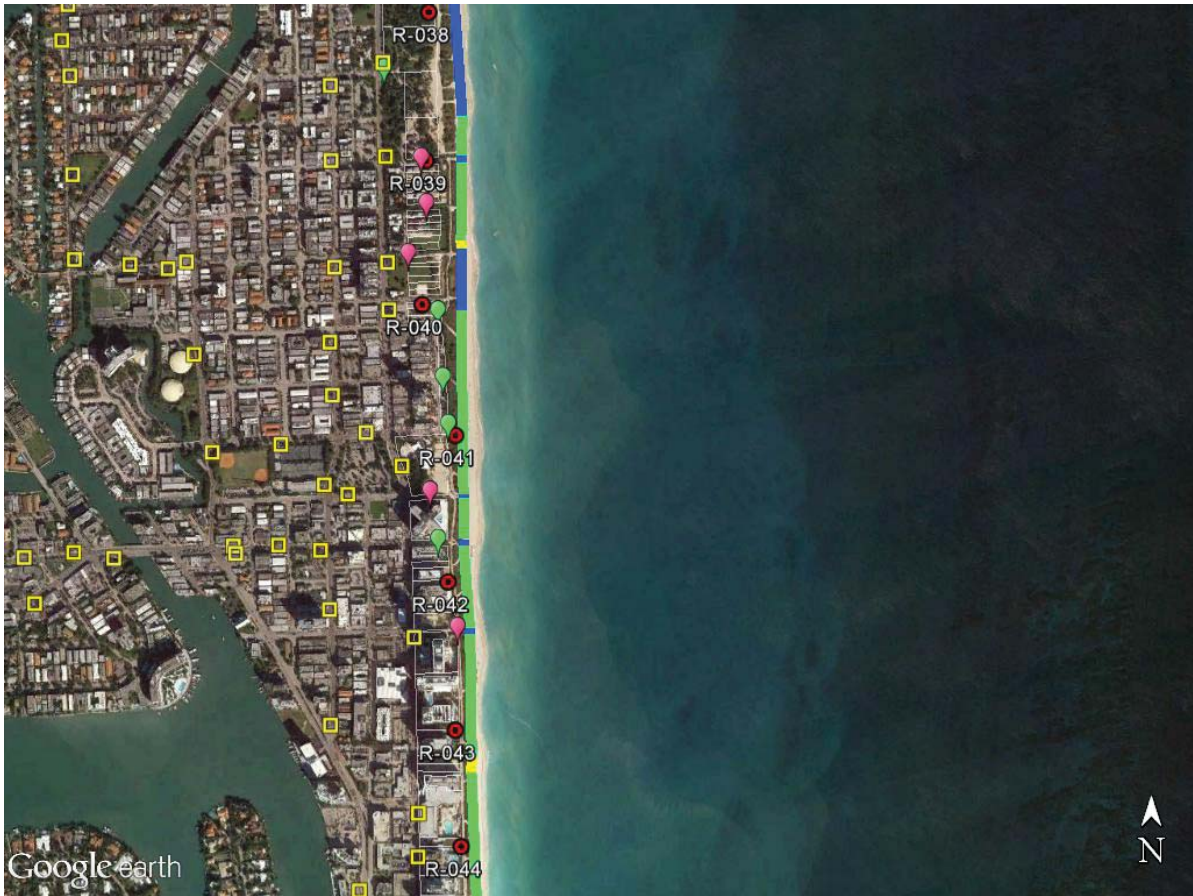


Figure 7: Main Segment (R-38 through R-44)

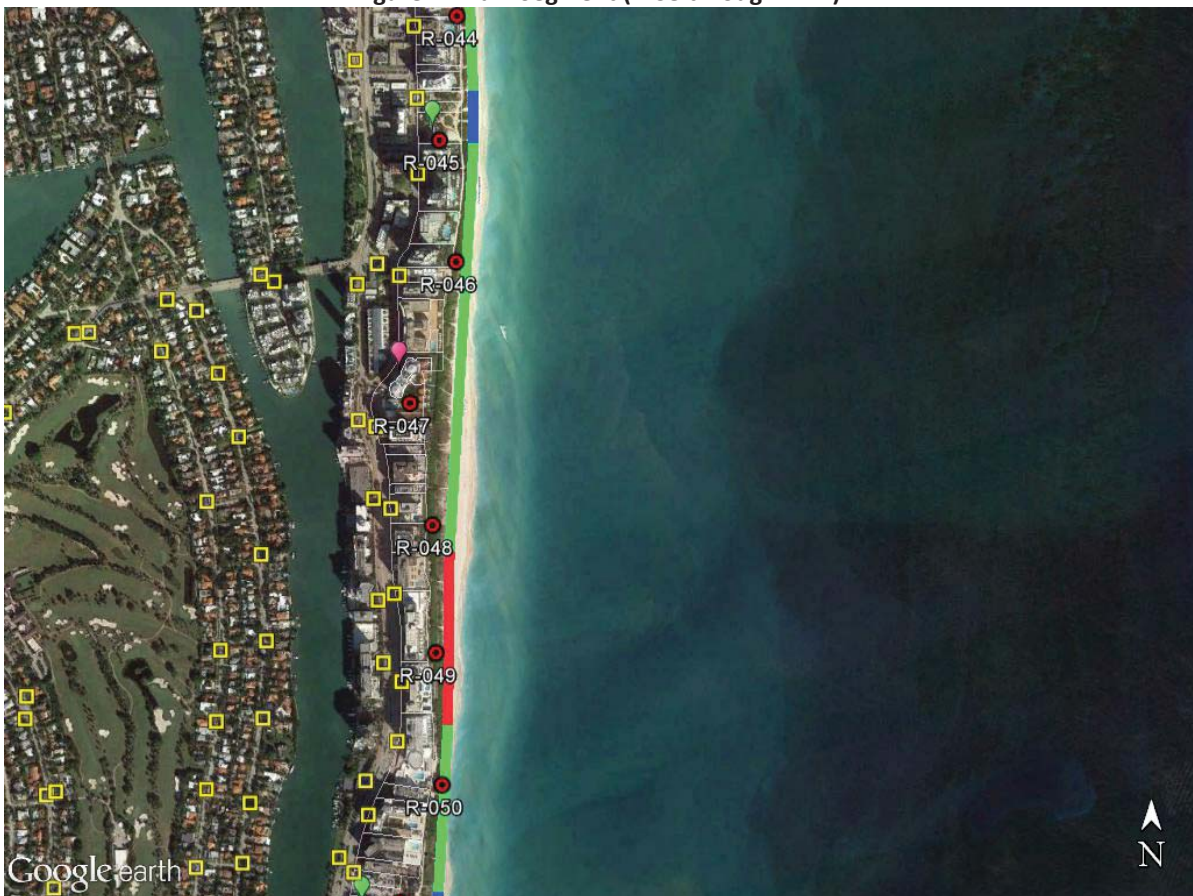


Figure 8: Main Segment (R-44 through R-50)

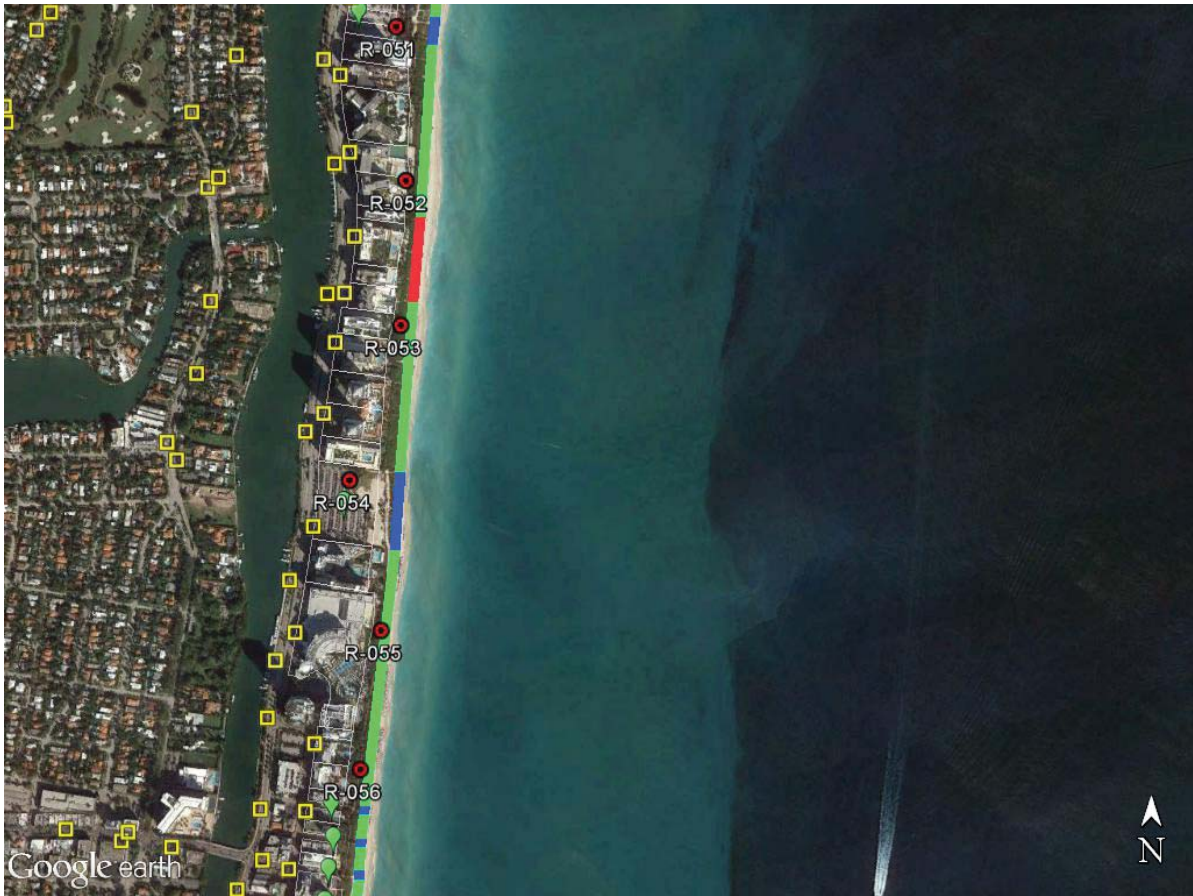


Figure 9: Main Segment (R-51 through R-56)

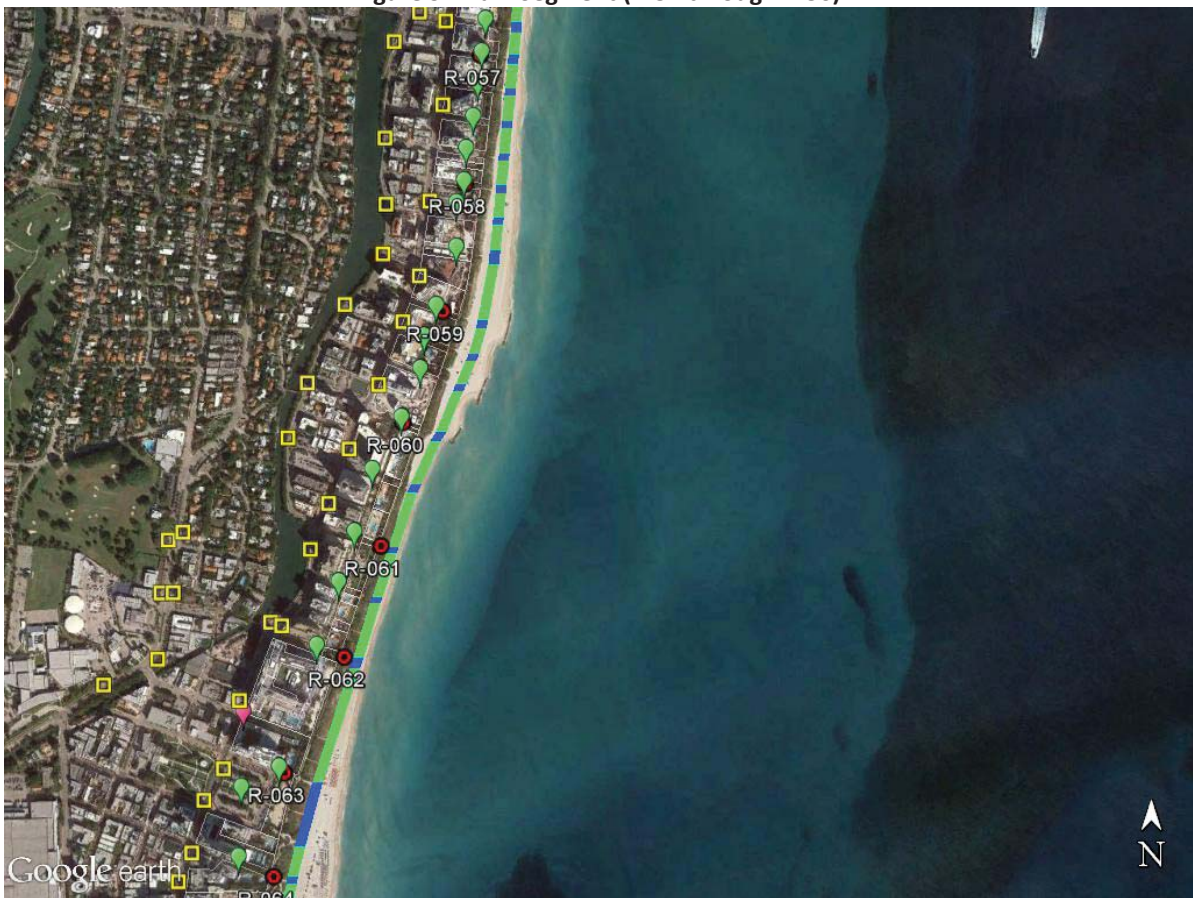


Figure 10: Main Segment (R-57 through R-63)

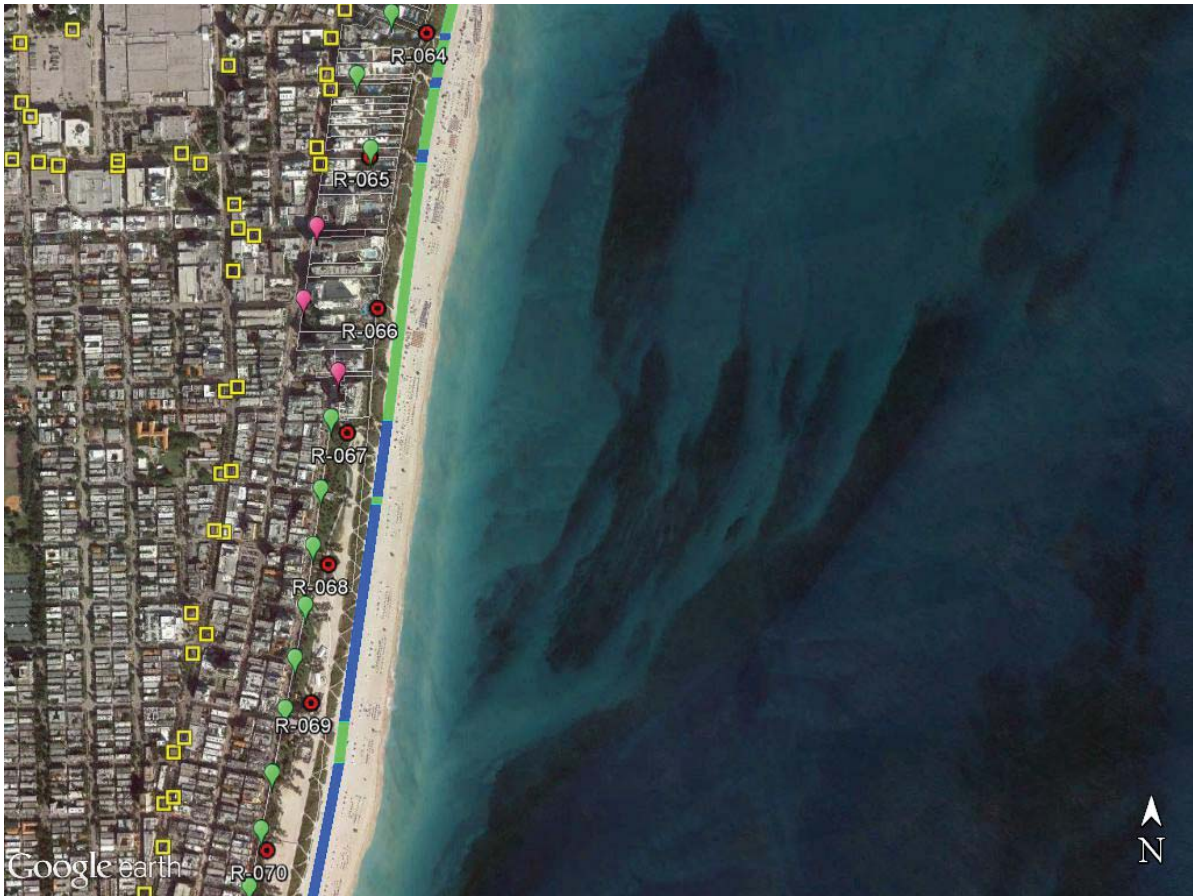


Figure 11: Main Segment (R-64 through R-70)

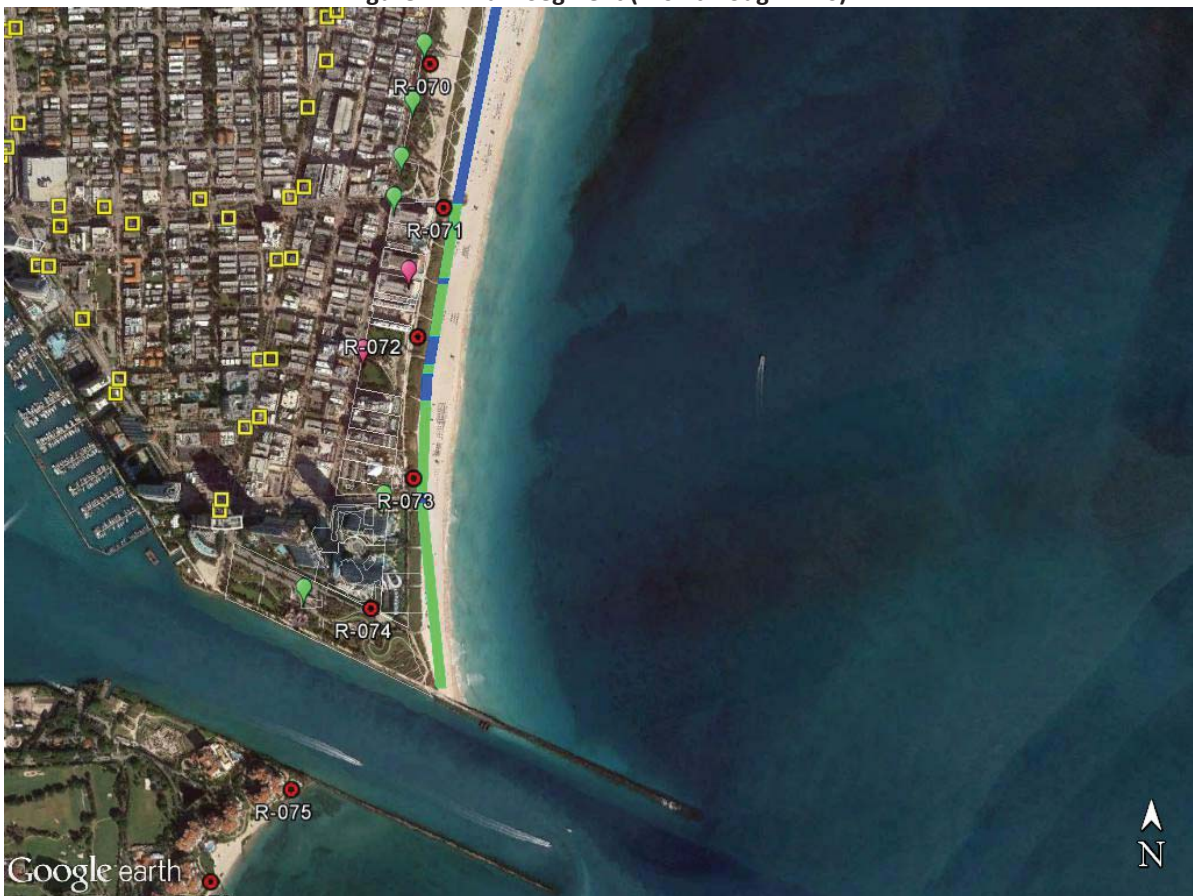


Figure 12: Main Segment (R-70 through R-74)