

DESIGN AUTHENTICATION

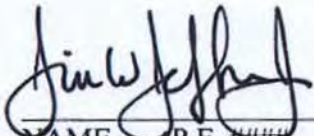
PROJECT: IWW Vicinity of St. Augustine Inlet and Inlet Channel

ATTACHED PLAN SHEETS: C1-1 through C4-1, 32 sheets dated 20 May 2010

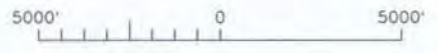
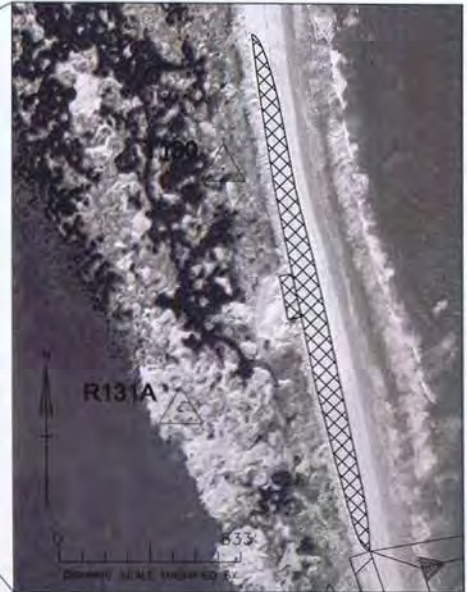
The attached plans were prepared by the Jacksonville District, U.S. Army Corps of Engineers (USACE). The initials or signatures and registrations designations of the signatory below or that appear on these project documents are within the scope of employment as required by USACE Engineering Regulation 1110-1-8152, PROFESSIONAL REGISTRATION, 8 Aug 1995, and are not made in the individual capacity of the signatories.

USACE employee signatures are provided in support of the "Interagency Coordination Agreement for Civil Works Projects", signed 28 Feb 2006 by the Florida Department of Environmental Protection, the USACE Jacksonville District, and USACE Mobile District.

These plans are for permitting purposes only, and are not for construction.

 11058 MS  
\_\_\_\_\_  
NAME, P.E. #####  
TITLE  
OFFICE

24 May 10  
DATE



NOT FOR CONSTRUCTION  
60% PLAN DRAWINGS  
DEPARTMENT OF THE ARMY  
JACKSONVILLE DISTRICT, CORPS OF ENGINEERS  
JACKSONVILLE, FLORIDA

ST. AUGUSTINE, FLORIDA  
MAINTENANCE DREDGING  
PERMIT DRAWING  
30 MARCH 2010  
LOCATION MAP

PLATE  
C1-1

PERMIT # 251706001

PERMIT # 251706001

Dredging

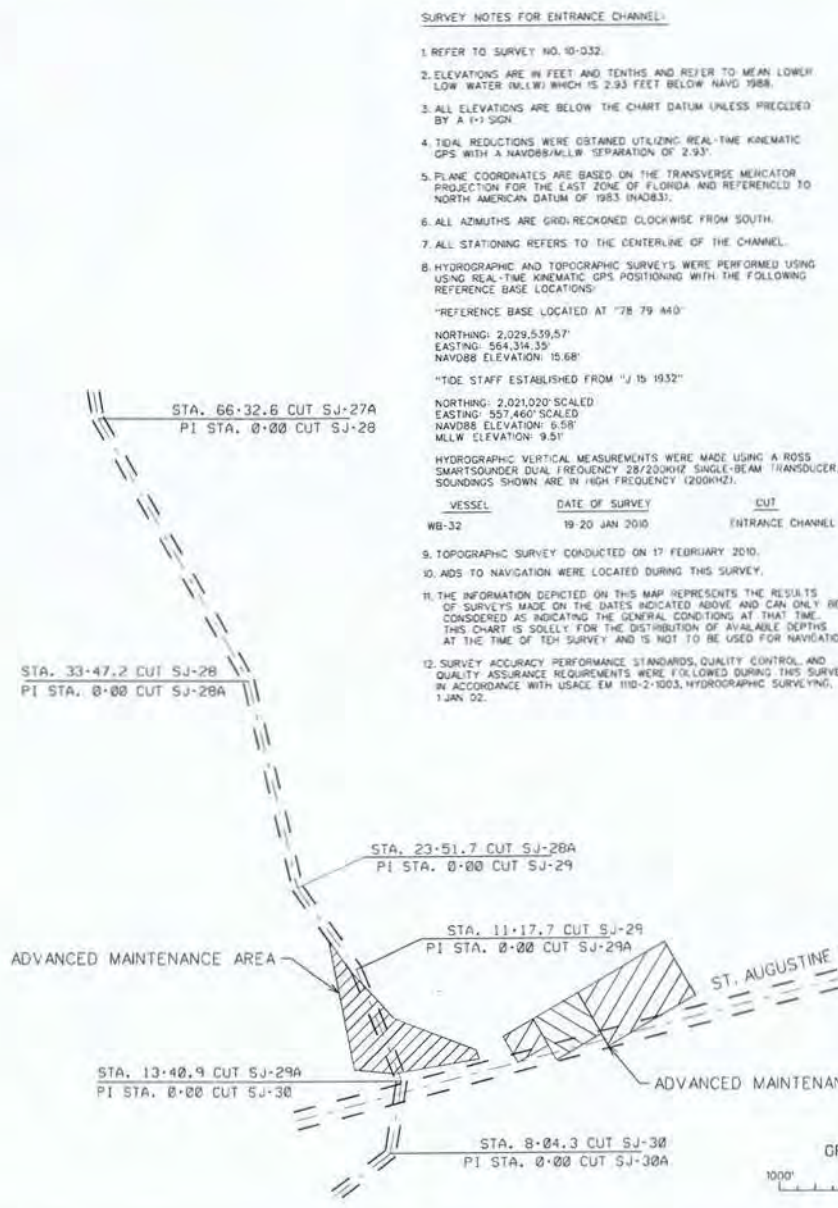
251706001



NOT FOR CONSTRUCTION  
60% PLAN DRAWINGS  
DEPARTMENT OF THE ARMY  
JACKSONVILLE DISTRICT, CORPS OF ENGINEERS  
JACKSONVILLE, FLORIDA

ST. AUGUSTINE, FLORIDA  
MAINTENANCE DREDGING  
PERMIT DRAWING  
30 MARCH 2010  
CHANNEL CONTROL DATA

PLATE  
C1-2



**SURVEY NOTES FOR CUTS SJ-28 THROUGH SJ-30:**

- REFER TO SURVEY NO. 09-120 FOR CUTS SJ-28 THROUGH SJ-30.
- SOUNDINGS ARE IN FEET AND TENTHS AND REFER TO NOAA'S REPORTED MEAN LOWER LOW WATER (MLLW) OF THE 1983-2001 TIDAL EPOCH.
- ALL ELEVATIONS ARE BELOW THE CHART DATUM UNLESS PRECEDED BY A (-) SIGN.
- TIDAL REDUCTIONS WERE OBTAINED UTILIZING REAL-TIME KINEMATIC GPS WITH A NAVD88/MLLW SEPARATION OF 2.93'.
- PLANE COORDINATES ARE BASED ON THE TRANSVERSE MERCATOR PROJECTION FOR THE EAST ZONE OF FLORIDA AND REFERENCED TO NORTH AMERICAN DATUM OF 1983 (NAD83).
- ALL AZIMUTHS ARE GRID RECKONED CLOCKWISE FROM SOUTH.
- SURVEY WAS PERFORMED USING REAL-TIME KINEMATIC GPS POSITIONING WITH THE FOLLOWING REFERENCE BASE LOCATIONS:  
"REFERENCE BASE LOCATED AT "78 79 440"  
NORTHING: 2,029,539.57'  
EASTING: 564,314.35'  
NAVD88 ELEVATION: 15.570'  
"TIDE STAFF ESTABLISHED FROM "J 15 1932"  
LAT: 29°53'33.5" N  
LONG: 081°18'41.4" W  
NAVD88 ELEVATION: 6.58'  
MLLW ELEVATION: 9.51'

VERTICAL MEASUREMENTS WERE MADE USING A ROSS SMARTSOUNDER DUAL FREQUENCY 28/200KHZ SINGLE-BEAM TRANSDUCER. SOUNDINGS SHOWN ARE IN HIGH FREQUENCY (200KHZ).

VESSEL	DATE OF SURVEY	CUT
WB-34	28-31 JUL 2009	SJ-28 THRU SJ-30

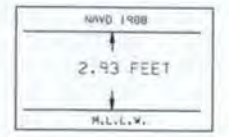
9. ADS TO NAVIGATION WERE LOCATED DURING THIS SURVEY.  
10. THE INFORMATION DEPICTED ON THIS MAP REPRESENTS THE RESULTS OF SURVEYS MADE ON THE DATES INDICATED ABOVE AND CAN ONLY BE CONSIDERED AS INDICATING THE GENERAL CONDITIONS AT THAT TIME. THIS CHART IS SOLELY FOR THE DISTRIBUTION OF AVAILABLE DEPTHS AT THE TIME OF THE SURVEY AND IS NOT TO BE USED FOR NAVIGATION.  
11. SURVEY ACCURACY PERFORMANCE STANDARDS, QUALITY CONTROL AND QUALITY ASSURANCE REQUIREMENTS WERE FOLLOWED DURING THIS SURVEY IN ACCORDANCE WITH USACE EM 110-2-1003, HYDROGRAPHIC SURVEYING, 1 JAN 02.

**GENERAL NOTES:**

- BEACH PROFILE DATA AND R-MONUMENT COORDINATES OF ST. JOHNS COUNTY PROVIDED BY FOEP REGIONAL COASTAL MONITORING DATA.
- MHW AND MLW COMPUTED FROM ST. AUGUSTINE BEACH TIDE GAUGE, STATION ID: 8720587, 1983-2001 EPOCH. ELEVATIONS COMPUTED FROM THE BENCH MARK AT THE STATION PDI A03046.
- MHW AND MLW INFORMATION IS NOT AVAILABLE FOR SALT RUN.

**LEGEND:**  
 FOEP CONTROL MONUMENT  
 CORE BORING

R MONUMENT	COORDINATES (NAD 83)	
MONUMENT	NORTHING (Y)	EASTING (X)
T126	2022701.140	567619.660
R131A	2018910.577	568697.386
T132	2017594.896	569375.672
R133	2016687.524	569449.824
R134	2016245.194	569650.766
R135	2014789.776	569926.011
R136	2013783.165	570154.225
R137A	2012784.004	570623.676
R138	2011713.570	570920.451
R139	2010792.363	571042.057
R140	2009936.490	571260.799
R141	2009030.480	571515.133
R142	2008041.997	571767.590
R143	2006907.497	571750.051
R143	2006234.219	571942.965
R144	2006002.220	571810.731
R145	2004974.090	571033.500
R146	2003974.993	571909.689
R147	2002974.981	571810.810
R148	2001996.627	572187.686
R149	2000990.219	572163.418
R150	2000818.807	572297.741
R151	1999685.194	572276.200
R152	1998620.290	572344.512
R153	1997817.900	572421.700



RELATIONSHIP BETWEEN NAVD 1988 AND MEAN LOWER LOW WATER (1983-2001 TIDAL EPOCH)

**LEGEND:**

BM	BENCHMARK
L	LIGHTED BEACON
G	GREEN DAYBEACON
R	RED DAYBEACON
RL	RED LIGHTED BUOY
GL	GREEN LIGHTED BUOY
C	CAN BUOY
N	NON BUOY
T	TIDE STAFF



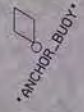
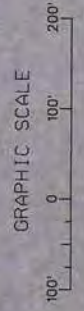
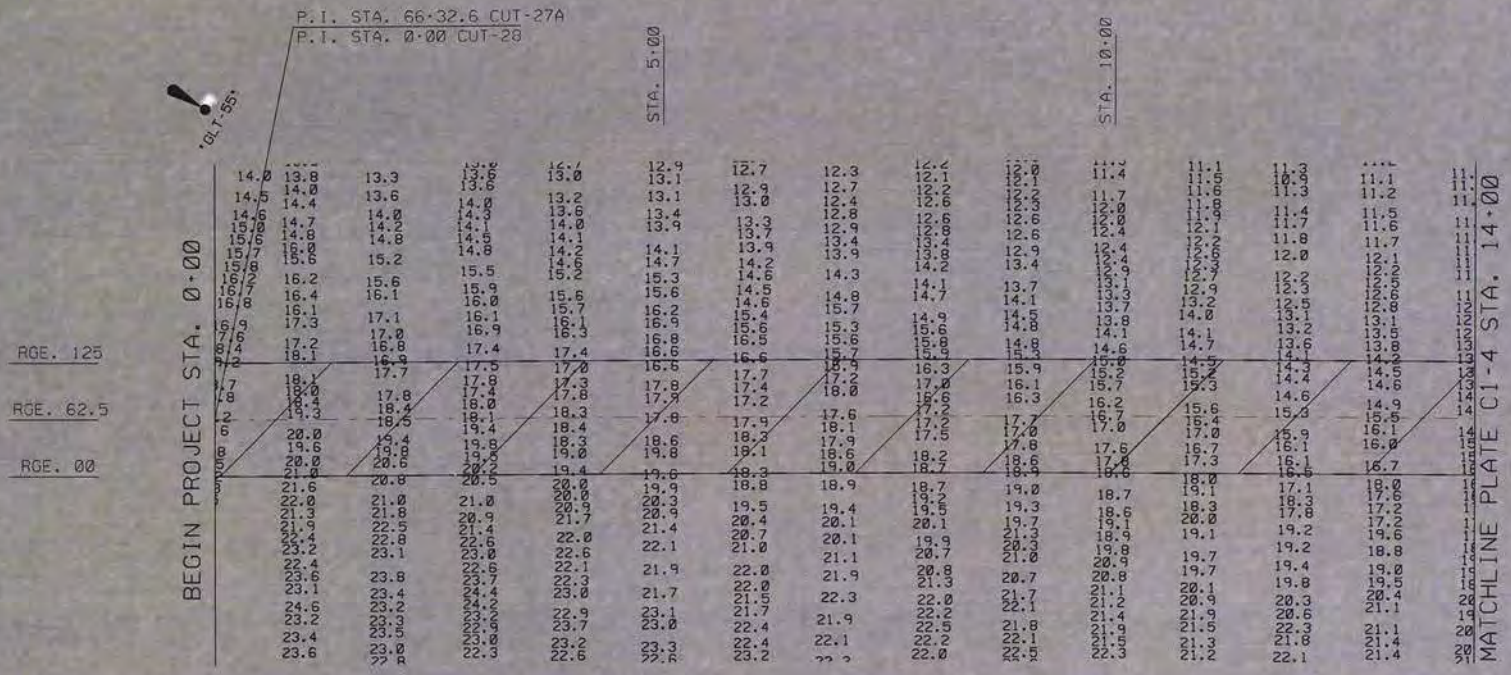
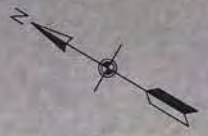
PERMIT # 251706001

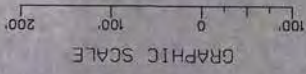


NOT FOR CONSTRUCTION  
60% PLAN DRAWINGS  
DEPARTMENT OF THE ARMY  
JACKSONVILLE DISTRICT, CORPS OF ENGINEERS  
JACKSONVILLE, FLORIDA

ST. AUGUSTINE, FLORIDA  
MAINTENANCE DREDGING  
PERMIT DRAWING  
30 MARCH 2010  
CHANNEL SURVEY

PLATE  
C1-3





MATCHLINE PLATE C1-3 STA. 14+00



MATCHLINE PLATE C1-5 STA. 29+00

STA. 15+00

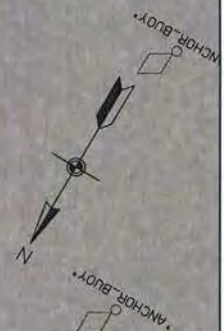
STA. 20+00

STA. 25+00

RGE. 125  
RGE. 62.5  
RGE. 00

RGE. 125  
RGE. 62.5  
RGE. 00

CUT-28  
AZ-329-53-15.1

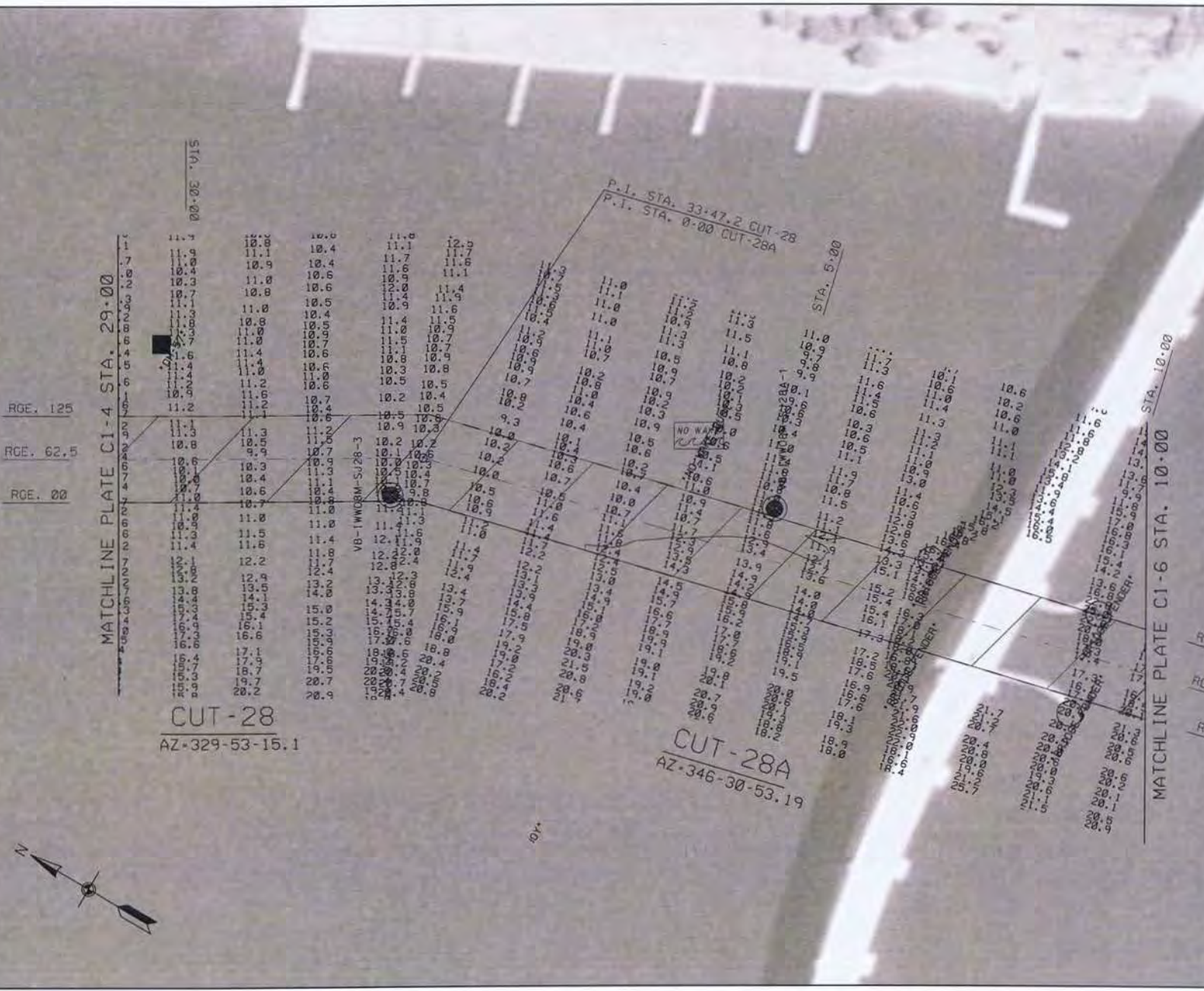
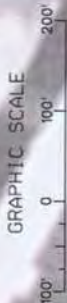


NOT FOR CONSTRUCTION  
60% PLAN DRAWINGS  
DEPARTMENT OF THE ARMY  
JACKSONVILLE DISTRICT, CORPS OF ENGINEERS  
JACKSONVILLE, FLORIDA

ST. AUGUSTINE, FLORIDA  
MAINTENANCE DREDGING  
PERMIT DRAWING  
30 MARCH 2010  
CHANNEL SURVEY

PLATE  
C1-4

PERMIT # 251706001



US Army Corps  
 of Engineers  
 Jacksonville District

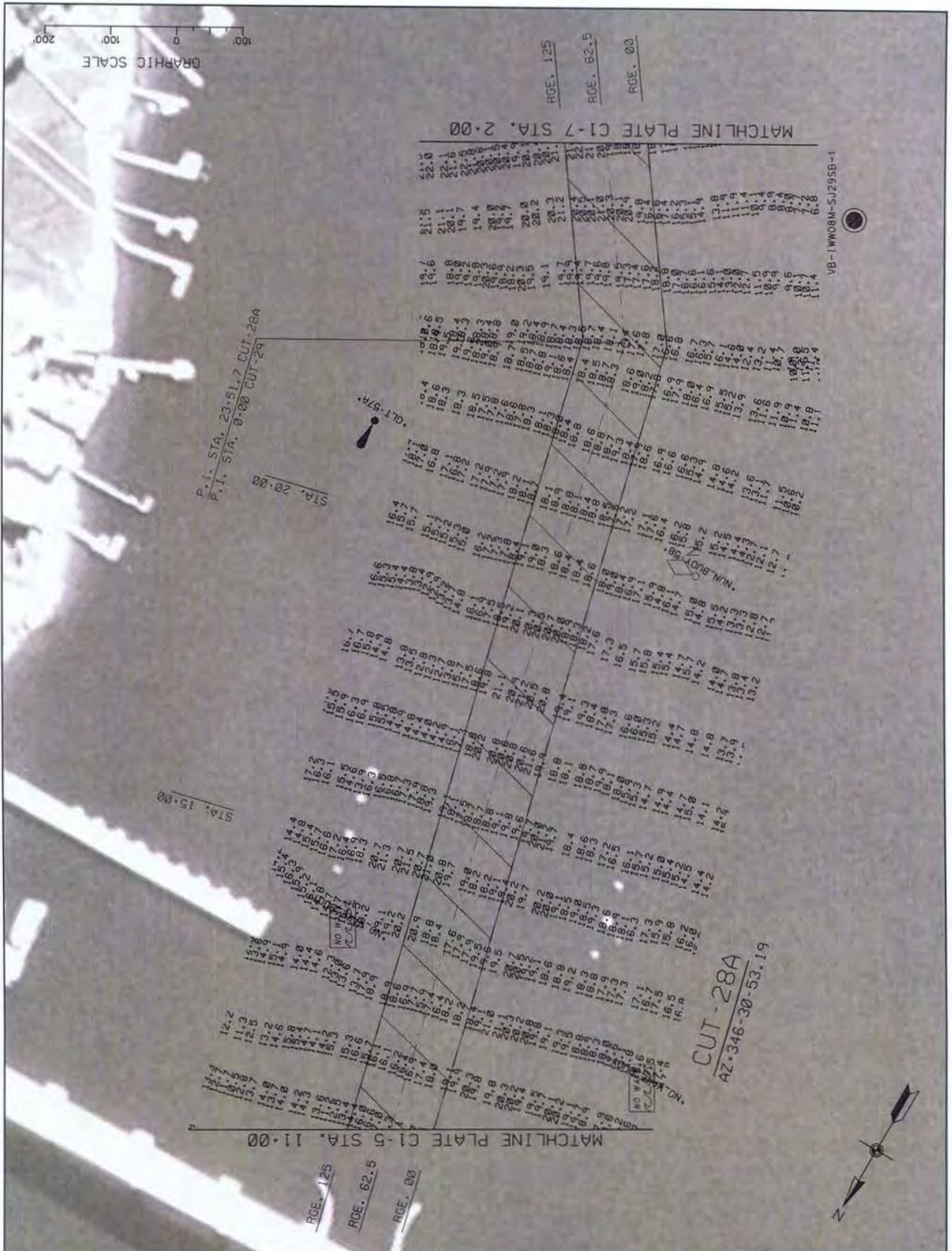
NOT FOR CONSTRUCTION  
 60% PLAN DRAWINGS

DEPARTMENT OF THE ARMY  
 JACKSONVILLE DISTRICT, CORPS OF ENGINEERS  
 JACKSONVILLE, FLORIDA

ST. AUGUSTINE, FLORIDA  
 MAINTENANCE DREDGING  
 PERMIT DRAWING  
 30 MARCH 2010  
 CHANNEL SURVEY

PLATE  
 C1-5

PERMIT # 251706001



VB-1W08M-SJ29SB-1

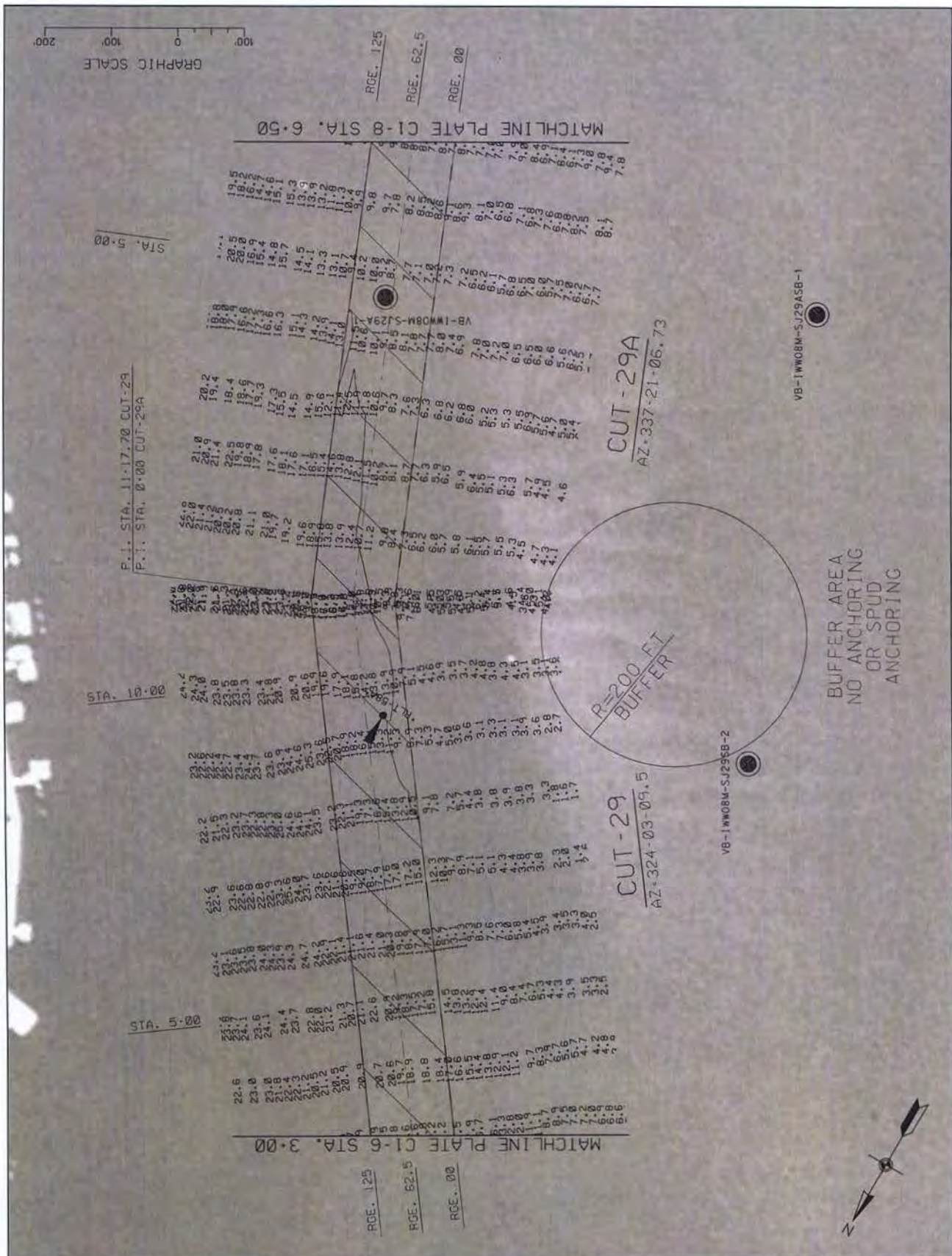
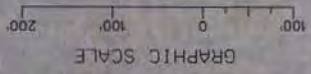


NOT FOR CONSTRUCTION  
60% PLAN DRAWINGS  
DEPARTMENT OF THE ARMY  
JACKSONVILLE DISTRICT, CORPS OF ENGINEERS  
JACKSONVILLE, FLORIDA

ST. AUGUSTINE, FLORIDA  
MAINTENANCE DREDGING  
PERMIT DRAWING  
30 MARCH 2010  
CHANNEL SURVEY

PLATE  
C1-6

PERMIT # 251706001



BUFFER AREA  
NO ANCHORING  
OR SPUD  
ANCHORING



NOT FOR CONSTRUCTION  
60% PLAN DRAWINGS

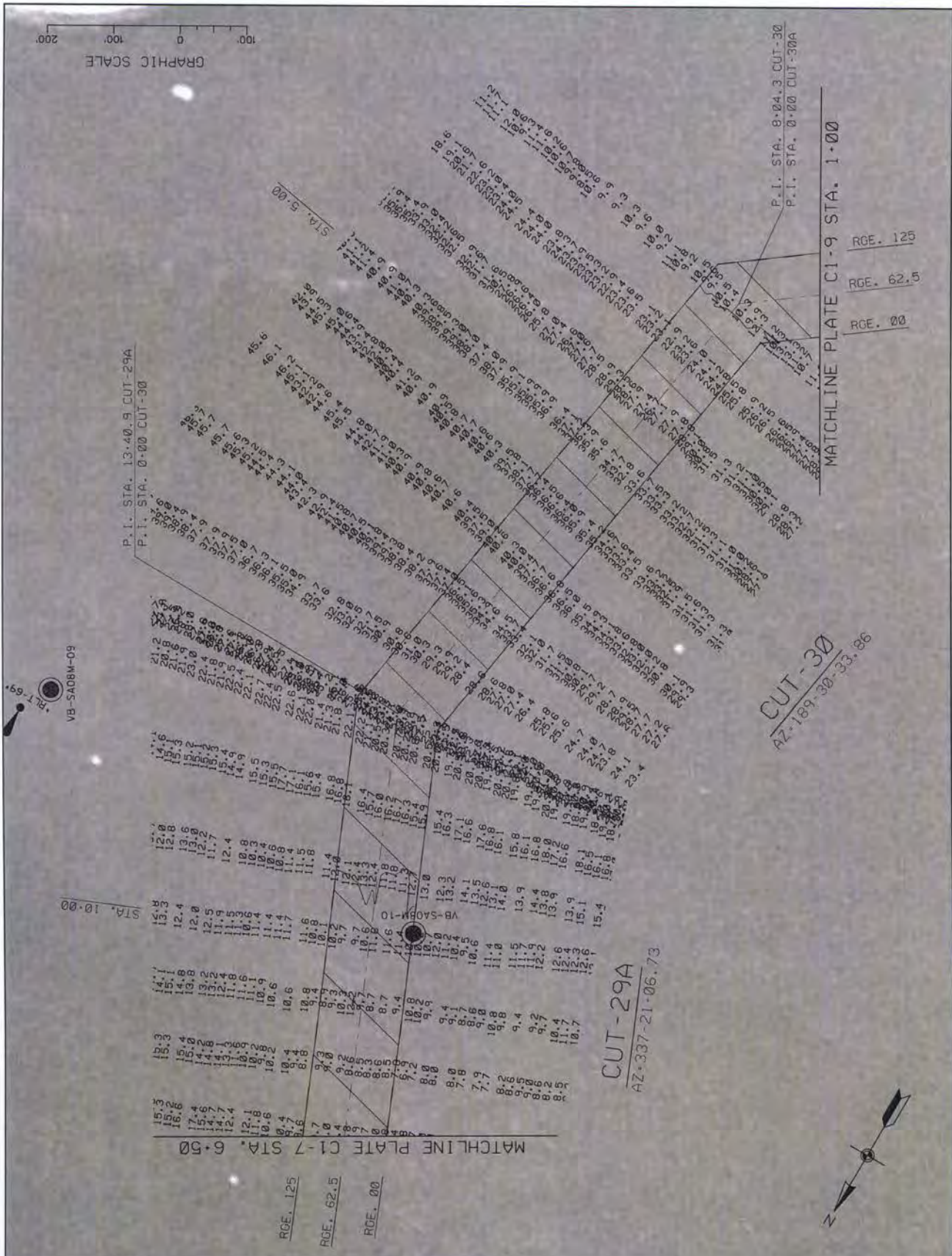
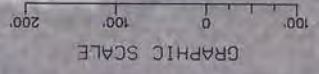
DEPARTMENT OF THE ARMY  
JACKSONVILLE DISTRICT, CORPS OF ENGINEERS  
JACKSONVILLE, FLORIDA

ST. AUGUSTINE, FLORIDA  
MAINTENANCE DREDGING  
PERMIT DRAWING  
30 MARCH 2010  
CHANNEL SURVEY

PLATE  
C1-7

PERMIT # 251 706 001





NOT FOR CONSTRUCTION  
 60% PLAN DRAWINGS  
 DEPARTMENT OF THE ARMY  
 JACKSONVILLE DISTRICT, CORPS OF ENGINEERS  
 JACKSONVILLE, FLORIDA

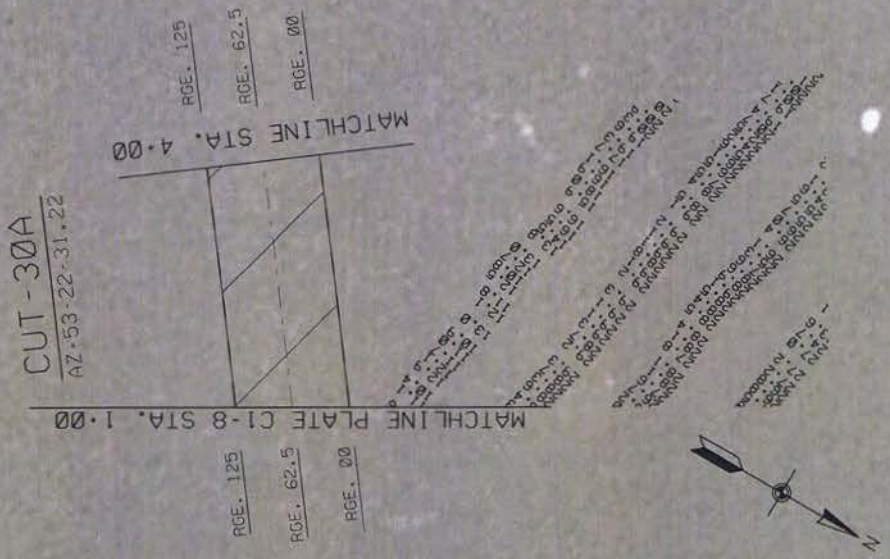
ST. AUGUSTINE, FLORIDA  
 MAINTENANCE DREDGING  
 PERMIT DRAWING  
 30 MARCH 2010  
 CHANNEL SURVEY

PLATE  
 C1-8

PERMIT # 251 706 001

GRAPHIC SCALE  
200 100 0 100

1-85V058-SJ30ASB-1



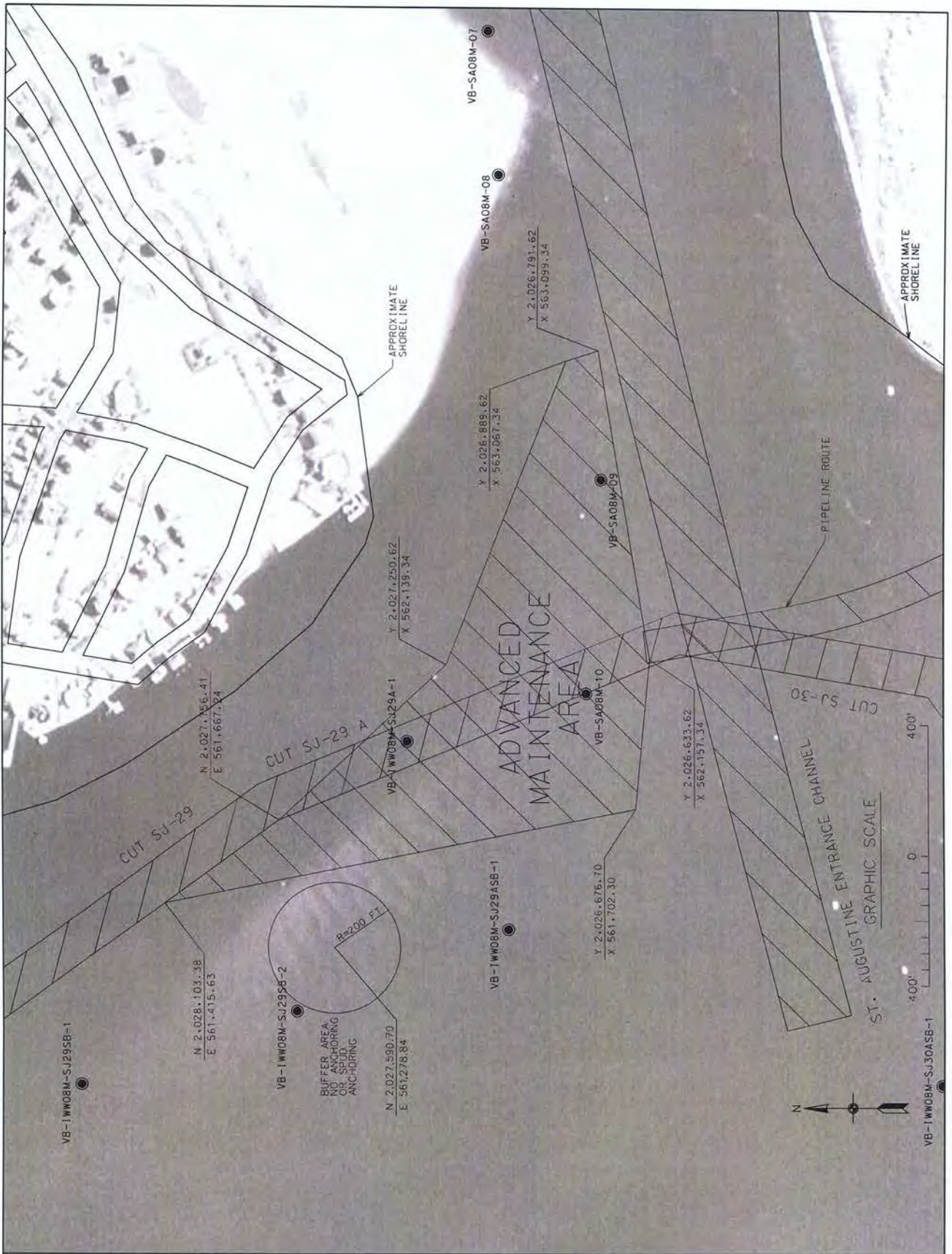
NOT FOR CONSTRUCTION  
60% PLAN DRAWINGS


DEPARTMENT OF THE ARMY  
JACKSONVILLE DISTRICT, CORPS OF ENGINEERS  
JACKSONVILLE, FLORIDA

ST. AUGUSTINE, FLORIDA  
MAINTENANCE DREDGING  
PERMIT DRAWING  
30 MARCH 2010  
CHANNEL SURVEY

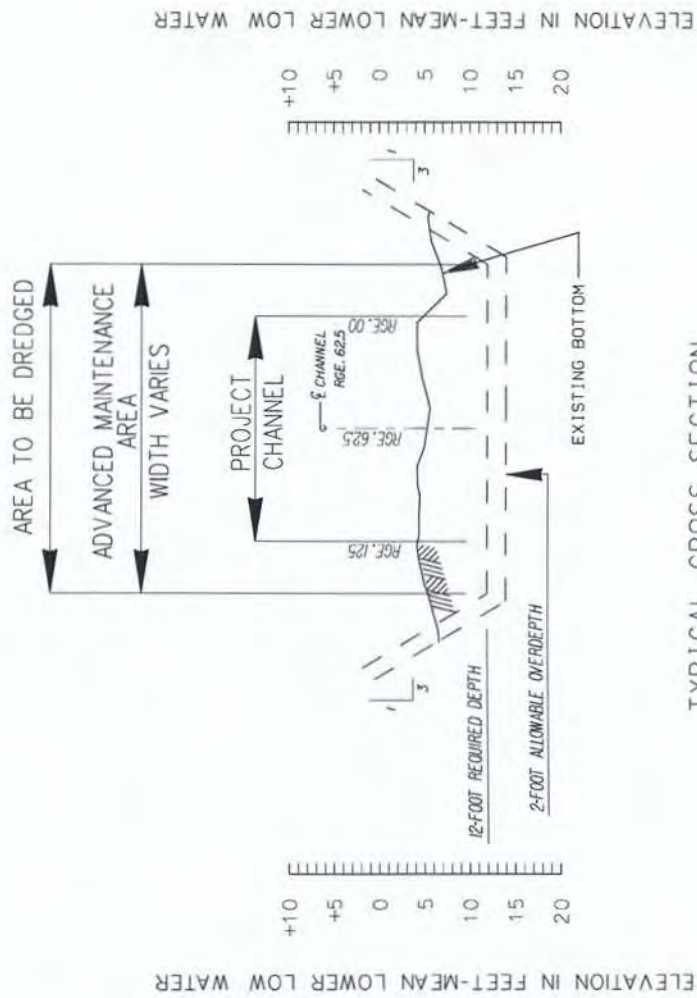
PLATE  
C1-9

PERMIT # 251 706 001



 <p>US Army Corps of Engineers Jacksonville District</p>	<p>NOT FOR CONSTRUCTION 60% PLAN DRAWINGS</p> <p>DEPARTMENT OF THE ARMY JACKSONVILLE DISTRICT, CORPS OF ENGINEERS JACKSONVILLE, FLORIDA</p>	<p>ST. AUGUSTINE, FLORIDA MAINTENANCE DREDGING PERMIT DRAWING 30 MARCH 2010 DREDGING AREA</p>	<p>PLATE C1-10</p>
---	---	---	------------------------

PERMIT # 251706001



TYPICAL CROSS SECTION  
INTRACOASTAL WATERWAY

SCALES: HORIZ. "A"  
VERT. "B"

GRAPHIC SCALES



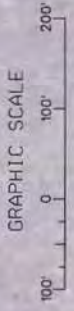
US Army Corps  
of Engineers  
Jacksonville District

NOT FOR CONSTRUCTION  
60% PLAN DRAWINGS  
DEPARTMENT OF THE ARMY  
JACKSONVILLE DISTRICT, CORPS OF ENGINEERS  
JACKSONVILLE, FLORIDA

ST. AUGUSTINE, FLORIDA  
MAINTENANCE DREDGING  
PERMIT DRAWING  
30 MARCH 2010  
ST. AUGUSTINE INLET

PLATE  
C1-11

PERMIT # 251 706 001

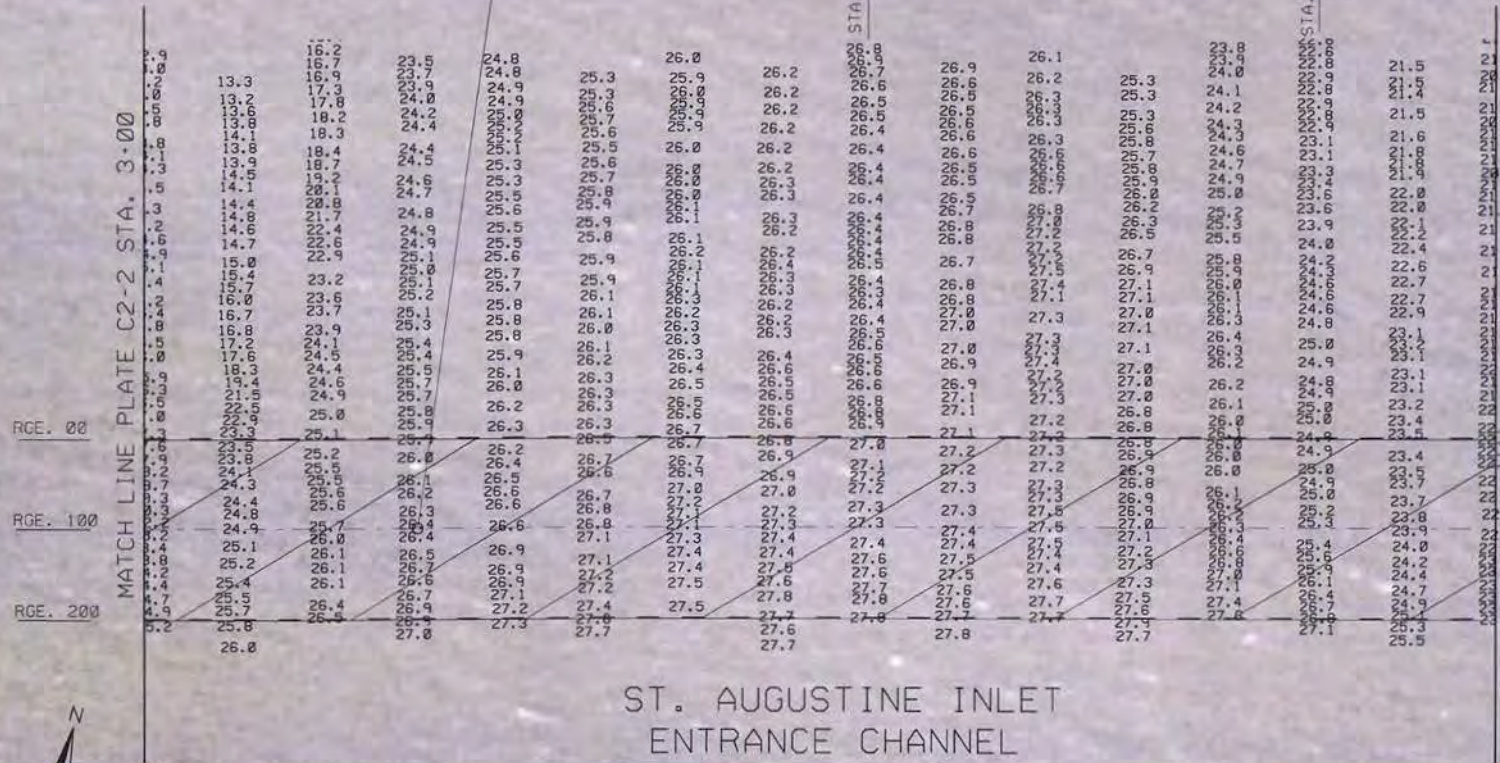


# ATLANTIC OCEAN

STA. 0+00  
ST. AUGUSTINE INLET  
ENTRANCE CHANNEL  
EXTENSION

STA. 1+15+00

STA. 1+110+00



ST. AUGUSTINE INLET  
ENTRANCE CHANNEL

AZ-75-44-33

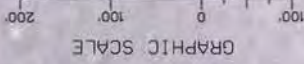


NOT FOR CONSTRUCTION  
60% PLAN DRAWINGS  
DEPARTMENT OF THE ARMY  
JACKSONVILLE DISTRICT, CORPS OF ENGINEERS  
JACKSONVILLE, FLORIDA

ST. AUGUSTINE, FLORIDA  
MAINTENANCE DREDGING  
PERMIT DRAWING  
30 MARCH 2010  
INLET SURVEY

PLATE  
C2-1

PERMIT # 251706001



MATCHLINE PLATE C2-1 STA. 3+00

RGE. 00  
RGE. 100  
RGE. 200

STA. 5+00

STA. 10+00

STA. 15+00



MATCHLINE PLATE C2-3 STA. 18+00

RGE. 00  
RGE. 100  
RGE. 200

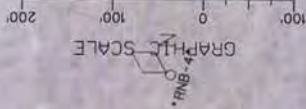


NOT FOR CONSTRUCTION  
60% PLAN DRAWINGS  
DEPARTMENT OF THE ARMY  
JACKSONVILLE DISTRICT, CORPS OF ENGINEERS  
JACKSONVILLE, FLORIDA

ST. AUGUSTINE, FLORIDA  
MAINTENANCE DREDGING  
PERMIT DRAWING  
30 MARCH 2010  
INLET SURVEY

PLATE  
C2-2

PERMIT # 251706001



ATLANTIC OCEAN

STA. 30+00

STA. 25+00

STA. 20+00

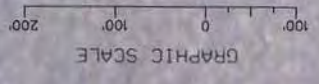


NOT FOR CONSTRUCTION  
60% PLAN DRAWINGS  
DEPARTMENT OF THE ARMY  
JACKSONVILLE DISTRICT, CORPS OF ENGINEERS  
JACKSONVILLE, FLORIDA

ST. AUGUSTINE, FLORIDA  
MAINTENANCE DREDGING  
PERMIT DRAWING  
30 MARCH 2010  
INLET SURVEY

PLATE  
C2-3

PERMIT # 251706001



# ATLANTIC OCEAN

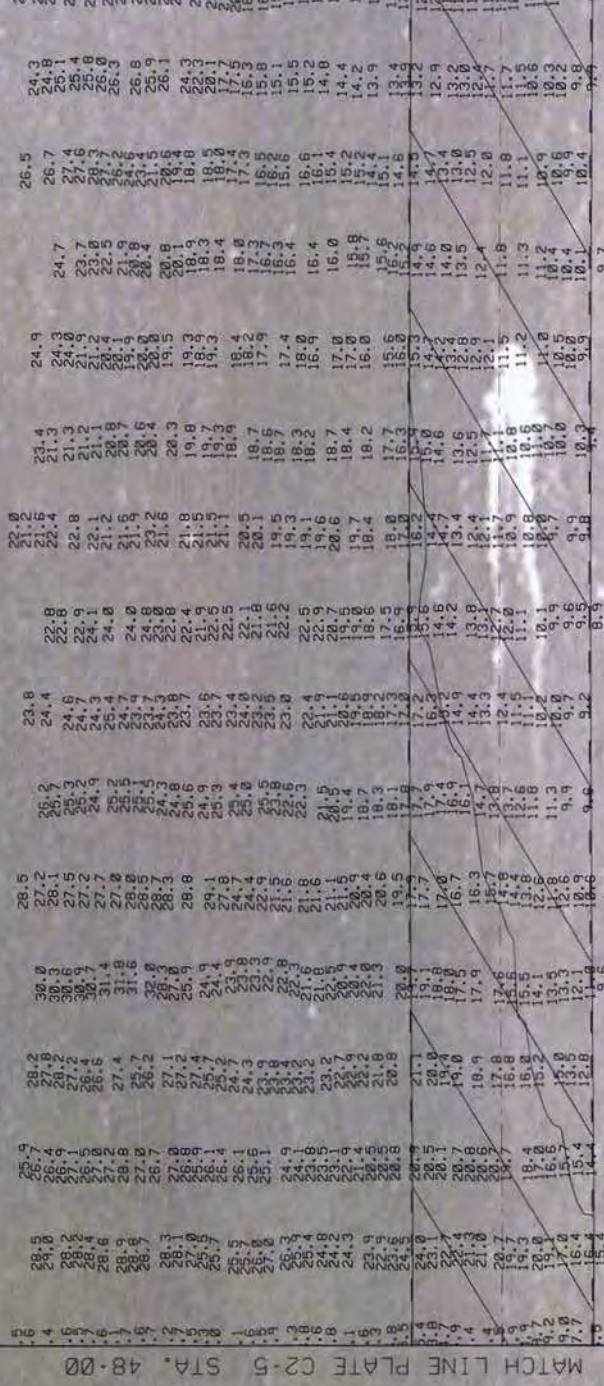
STA. 35+00

STA. 40+00

STA. 45+00

MATCH LINE PLATE C2-3 STA. 33+00

MATCH LINE PLATE C2-5 STA. 48+00



RCE. 00  
RCE. 100  
RCE. 200

RCE. 00  
RCE. 100  
RCE. 200



NOT FOR CONSTRUCTION  
60% PLAN DRAWINGS  
DEPARTMENT OF THE ARMY  
JACKSONVILLE DISTRICT, CORPS OF ENGINEERS  
JACKSONVILLE, FLORIDA

ST. AUGUSTINE, FLORIDA  
MAINTENANCE DREDGING  
PERMIT DRAWING  
30 MARCH 2010  
INLET SURVEY

PLATE  
C2-4

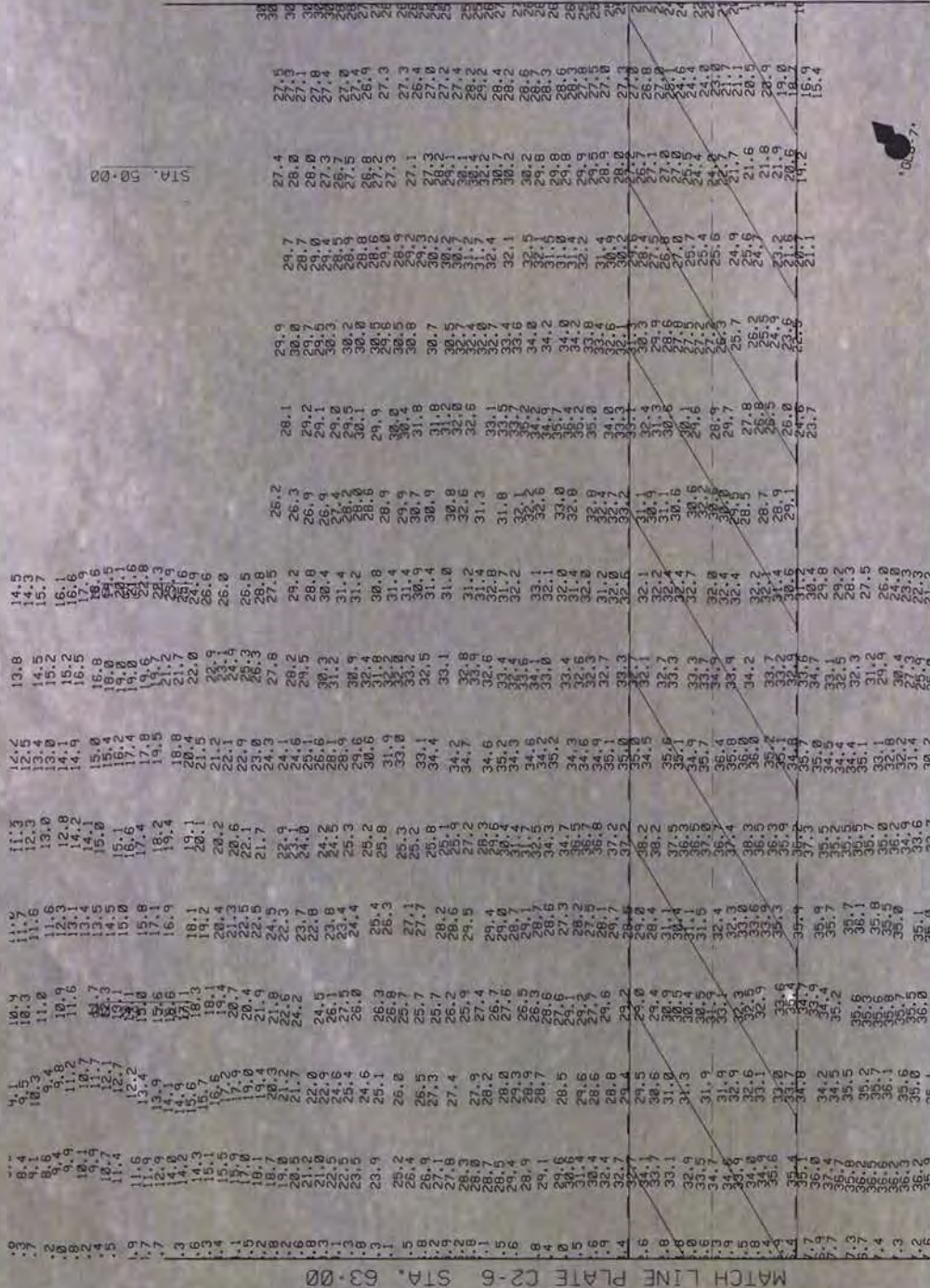
### PERMIT # 251 706 001



GRAPHIC SCALE  
0 100 200

MATCH LINE PLATE C2-4 STA. 48+00

MATCH LINE PLATE C2-6 STA. 63+00

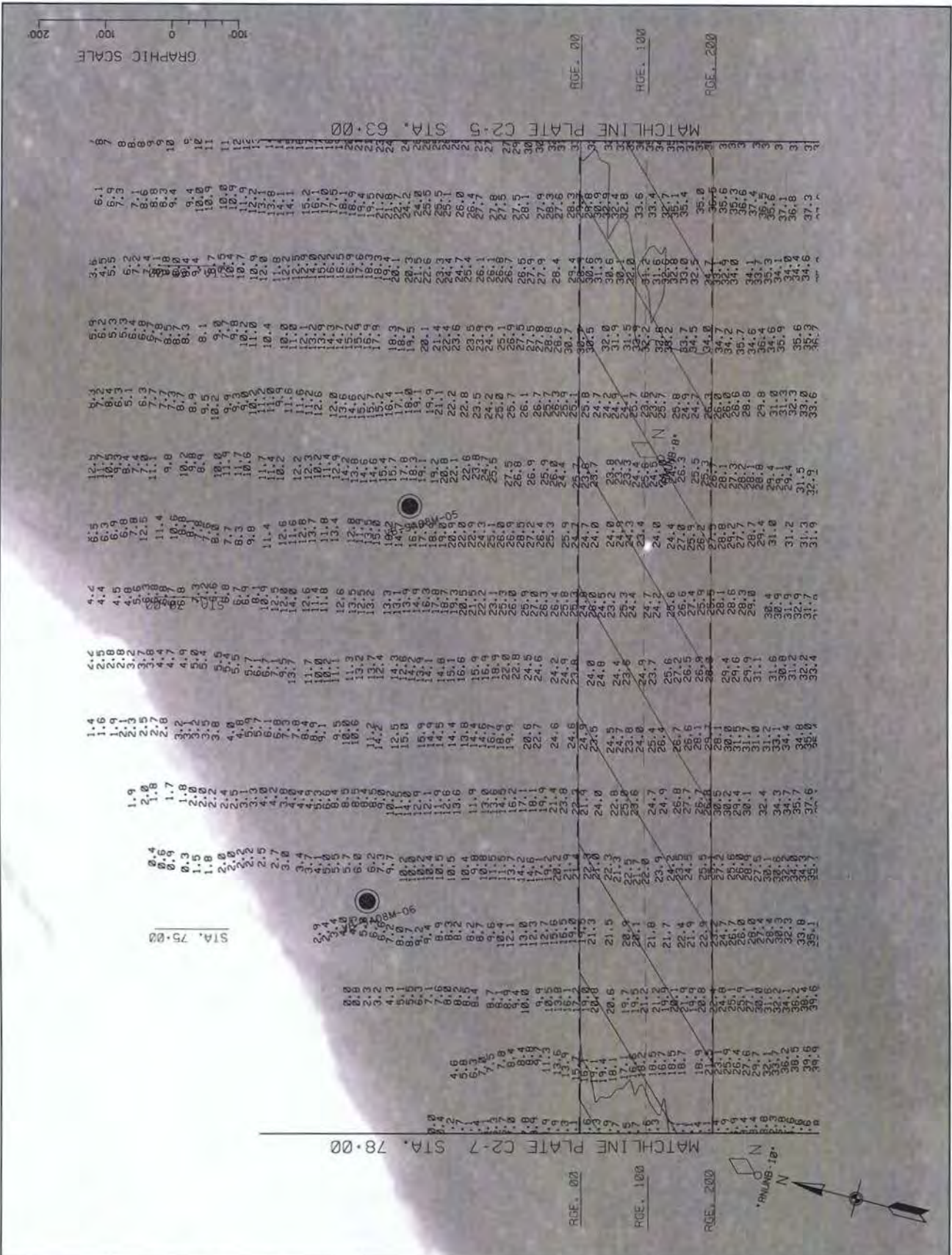
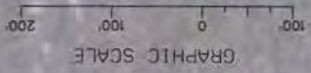


NOT FOR CONSTRUCTION  
60% PLAN DRAWINGS  
DEPARTMENT OF THE ARMY  
JACKSONVILLE DISTRICT, CORPS OF ENGINEERS  
JACKSONVILLE, FLORIDA

ST. AUGUSTINE, FLORIDA  
MAINTENANCE DREDGING  
PERMIT DRAWING  
30 MARCH 2010  
INLET SURVEY

PLATE  
C2-5

PERMIT # 251706001



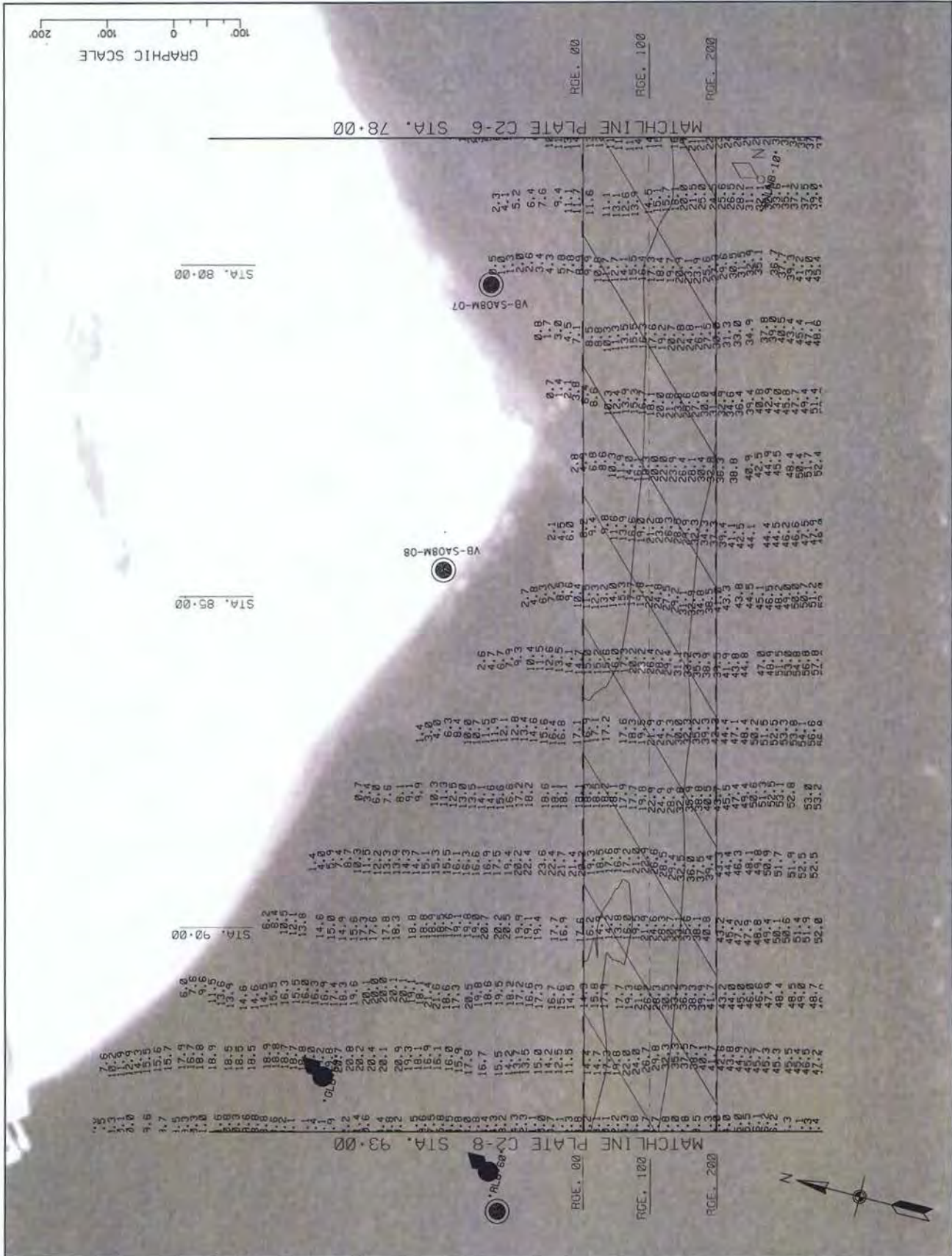
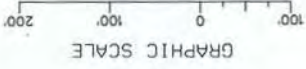
NOT FOR CONSTRUCTION  
60% PLAN DRAWINGS

DEPARTMENT OF THE ARMY  
JACKSONVILLE DISTRICT, CORPS OF ENGINEERS  
JACKSONVILLE, FLORIDA

ST. AUGUSTINE, FLORIDA  
MAINTENANCE DREDGING  
PERMIT DRAWING  
30 MARCH 2010  
INLET SURVEY

PLATE  
C2-6

PERMIT # 251706001

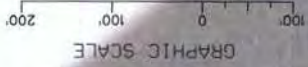


NOT FOR CONSTRUCTION  
 60% PLAN DRAWINGS  
 DEPARTMENT OF THE ARMY  
 JACKSONVILLE DISTRICT, CORPS OF ENGINEERS  
 JACKSONVILLE, FLORIDA

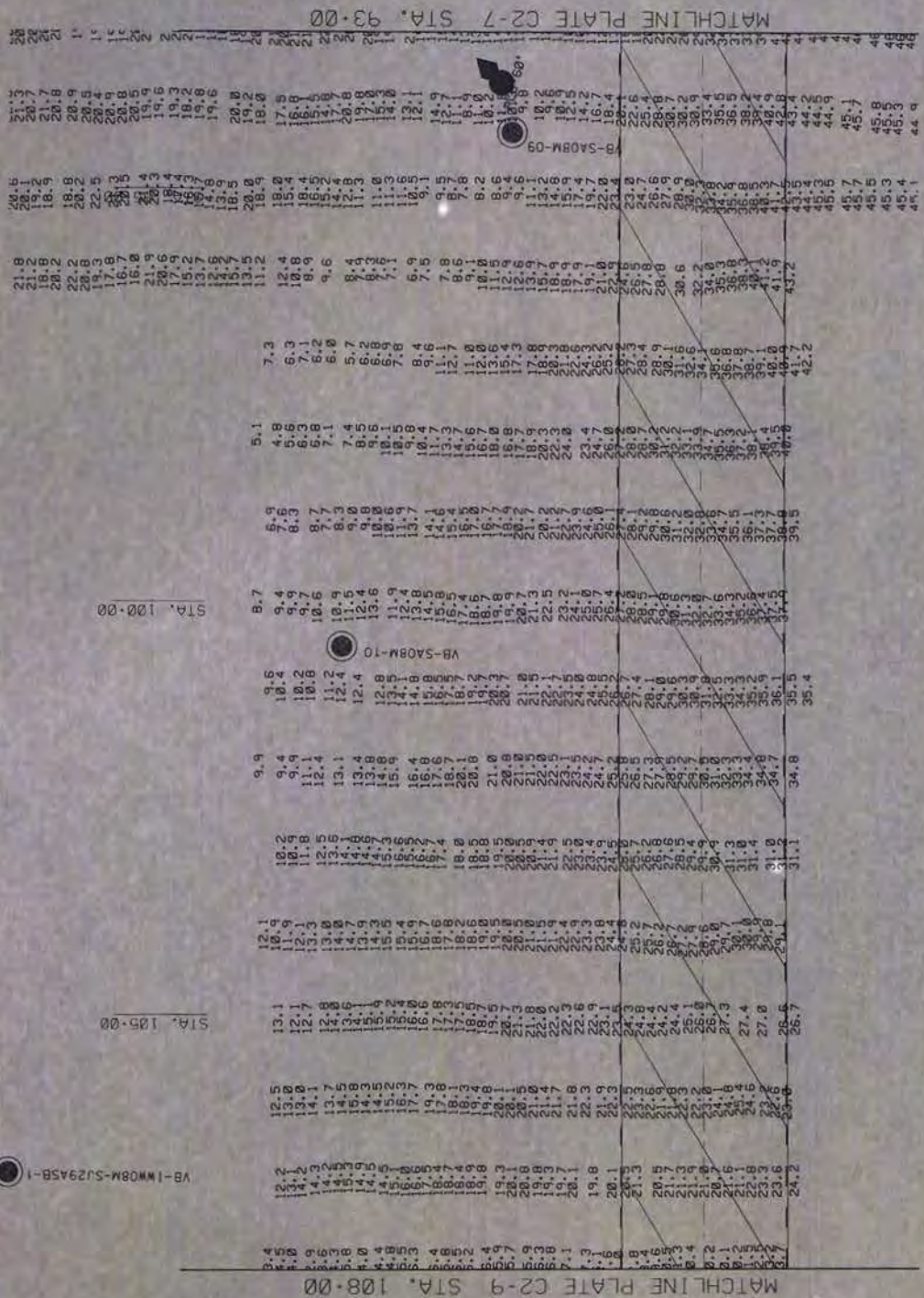
ST. AUGUSTINE, FLORIDA  
 MAINTENANCE DREDGING  
 PERMIT DRAWING  
 30 MARCH 2010  
 INLET SURVEY

PLATE  
 C2-7

PERMIT # 251 706 001



GRAPHIC SCALE



RGE. 00

RGE. 100

RGE. 200



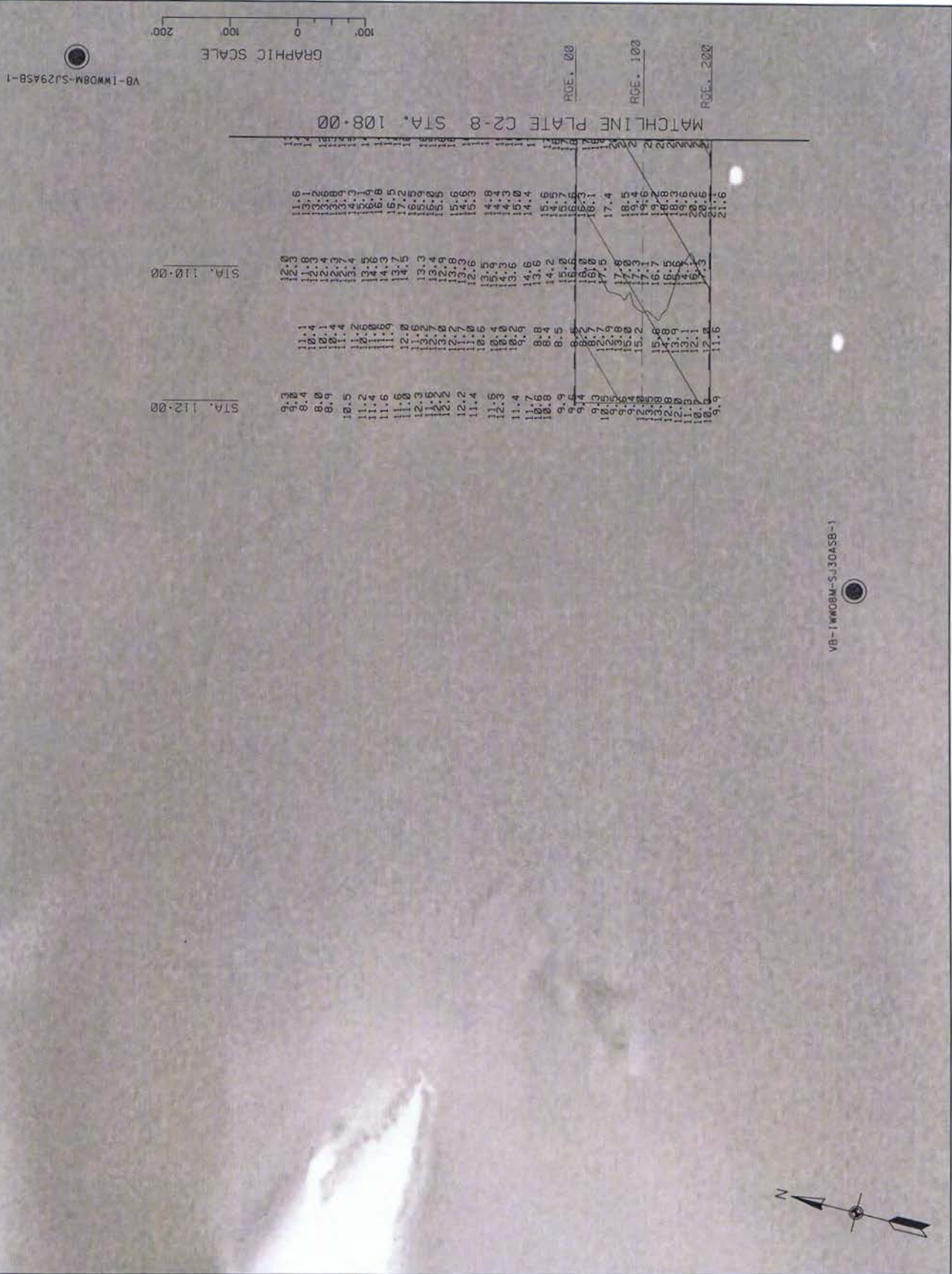
US Army Corps of Engineers  
Jacksonville District

NOT FOR CONSTRUCTION  
60% PLAN DRAWINGS  
DEPARTMENT OF THE ARMY  
JACKSONVILLE DISTRICT, CORPS OF ENGINEERS  
JACKSONVILLE, FLORIDA

ST. AUGUSTINE, FLORIDA  
MAINTENANCE DREDGING  
PERMIT DRAWING  
30 MARCH 2010  
INLET SURVEY

PLATE  
C2-8

PERMIT # 251706001



NOT FOR CONSTRUCTION  
60% PLAN DRAWINGS  
DEPARTMENT OF THE ARMY  
JACKSONVILLE DISTRICT, CORPS OF ENGINEERS  
JACKSONVILLE, FLORIDA

ST. AUGUSTINE, FLORIDA  
MAINTENANCE DREDGING  
PERMIT DRAWING  
30 MARCH 2010  
INLET SURVEY

PLATE  
C2-9

PERMIT # 251706001



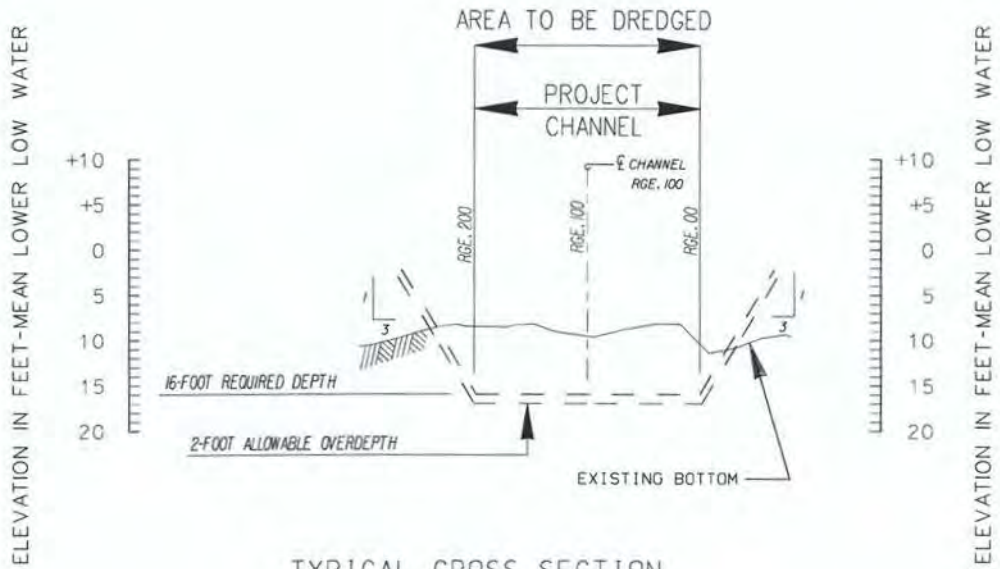
US Army Corps  
of Engineers  
Jacksonville District

NOT FOR CONSTRUCTION  
60% PLAN DRAWINGS

DEPARTMENT OF THE ARMY  
JACKSONVILLE DISTRICT, CORPS OF ENGINEERS  
JACKSONVILLE, FLORIDA

ST. AUGUSTINE, FLORIDA  
MAINTENANCE DREDGING  
PERMIT DRAWING  
30 MARCH 2010  
ST. AUGUSTINE INLET

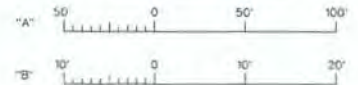
PLATE  
C2-10



TYPICAL CROSS SECTION  
ST. AUGUSTINE INLET

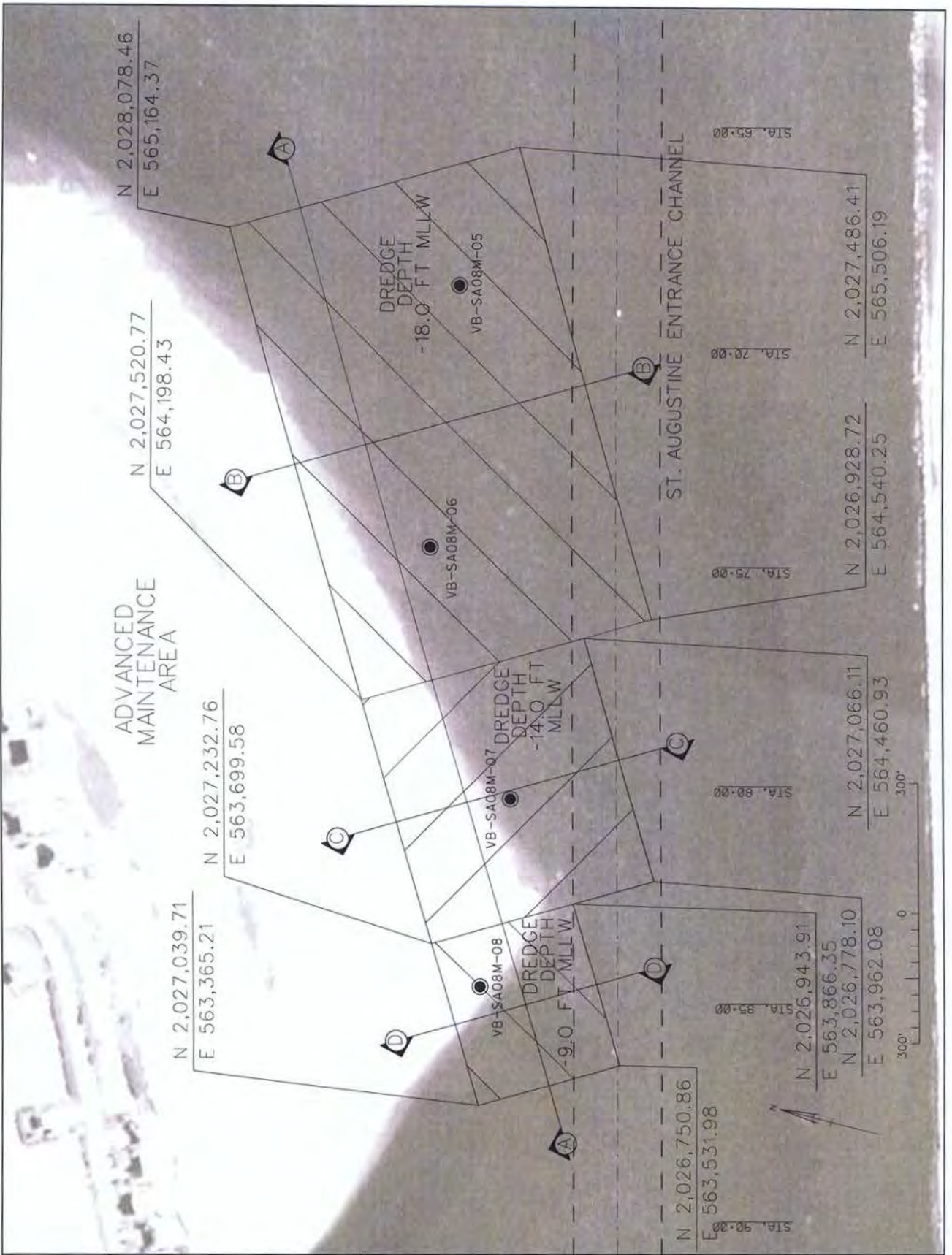
SCALES: HORIZ. "A"  
VERT. "B"

GRAPHIC SCALES



NOTE: AS AUTHORIZED BY CONGRESSIONAL  
DOCUMENT 133/81/1, A CHANNEL 16 FEET  
DEEP BY 200 FEET WIDE ALONG BEST  
NATURAL ALIGNMENT.

PERMIT # 251 706 001

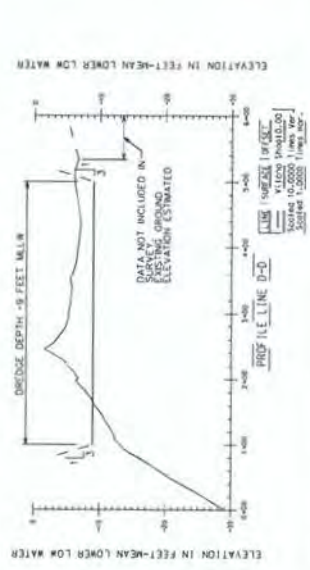
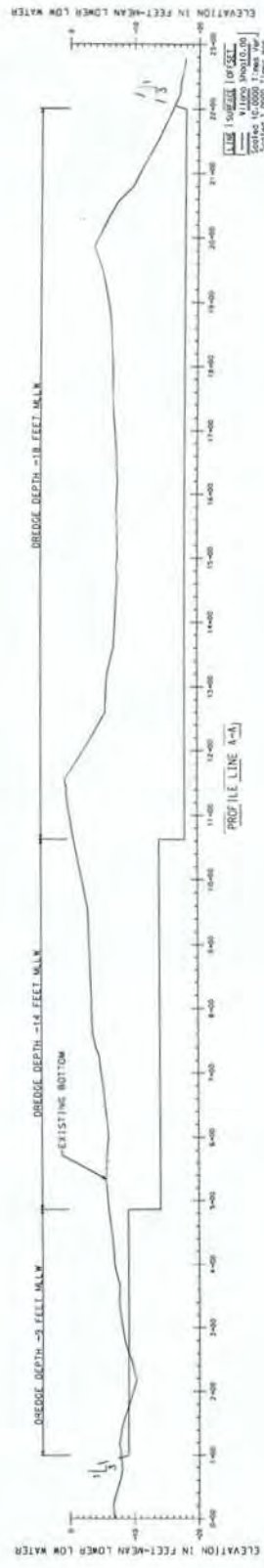


NOT FOR CONSTRUCTION  
60% PLAN DRAWINGS  
DEPARTMENT OF THE ARMY  
JACKSONVILLE DISTRICT, CORPS OF ENGINEERS  
JACKSONVILLE, FLORIDA

ST. AUGUSTINE, FLORIDA  
MAINTENANCE DREDGING  
PERMIT DRAWING  
30 MARCH 2010  
ADVANCED MAINTENANCE AREA

PLATE  
C2-11

PERMIT # 251 706 001



NOTE: PROFILES COORDINATE WITH PROFILE LINES ON SHEET C2-11. SURVEY DATA COLLECTED FROM SURVEY NO. 10-032. THIS IS THE SAME SURVEY USED FOR PLATES C2-1 THROUGH C2-9.



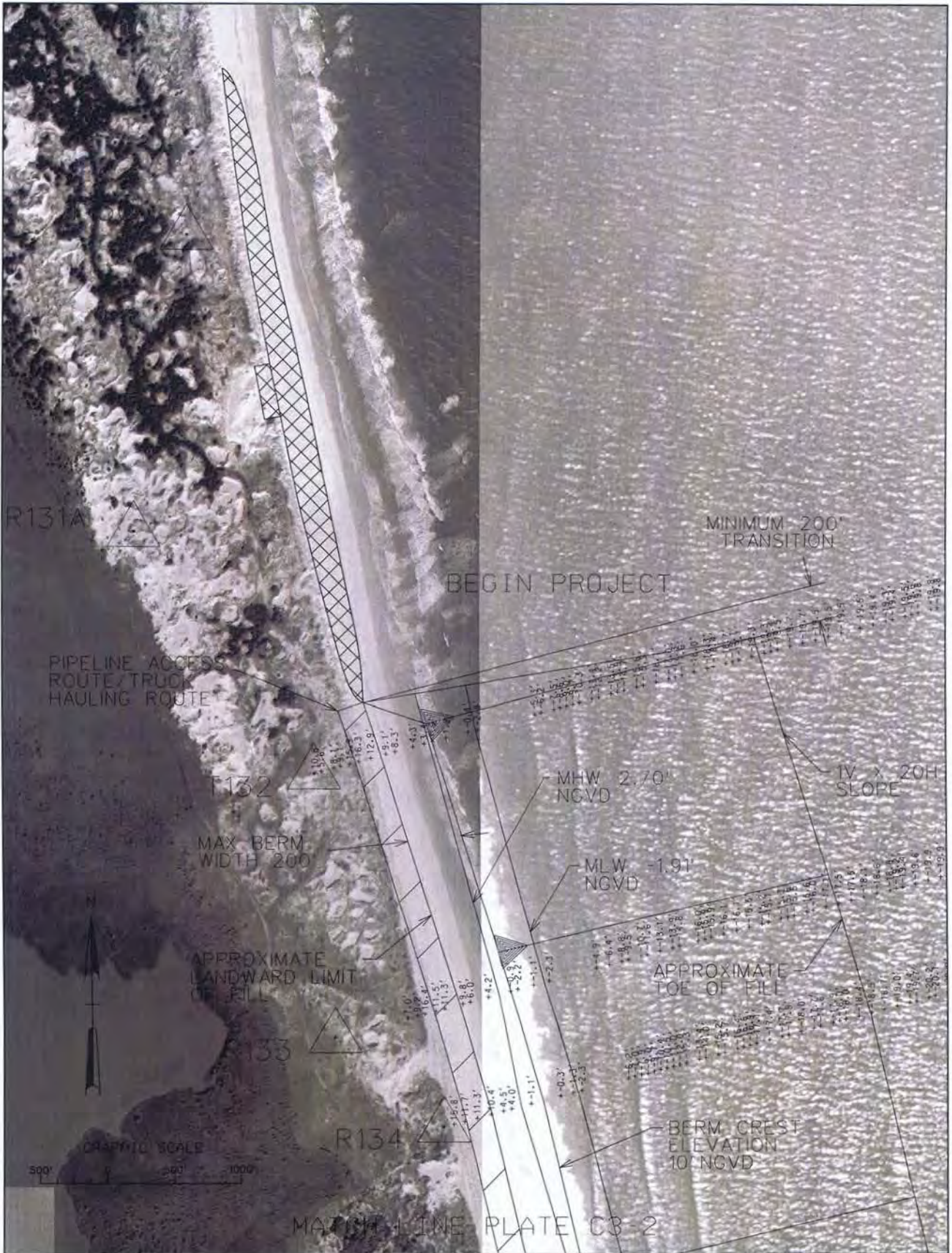
NOT FOR CONSTRUCTION  
60% PLAN DRAWINGS  
DEPARTMENT OF THE ARMY  
JACKSONVILLE DISTRICT, CORPS OF ENGINEERS  
JACKSONVILLE, FLORIDA

ST. AUGUSTINE, FLORIDA  
MAINTENANCE DREDGING  
PERMIT DRAWING  
30 MARCH 2010  
ADVANCED MAINTENANCE AREA PROFILES


PLATE  
C2-12

PERMIT # 251706001

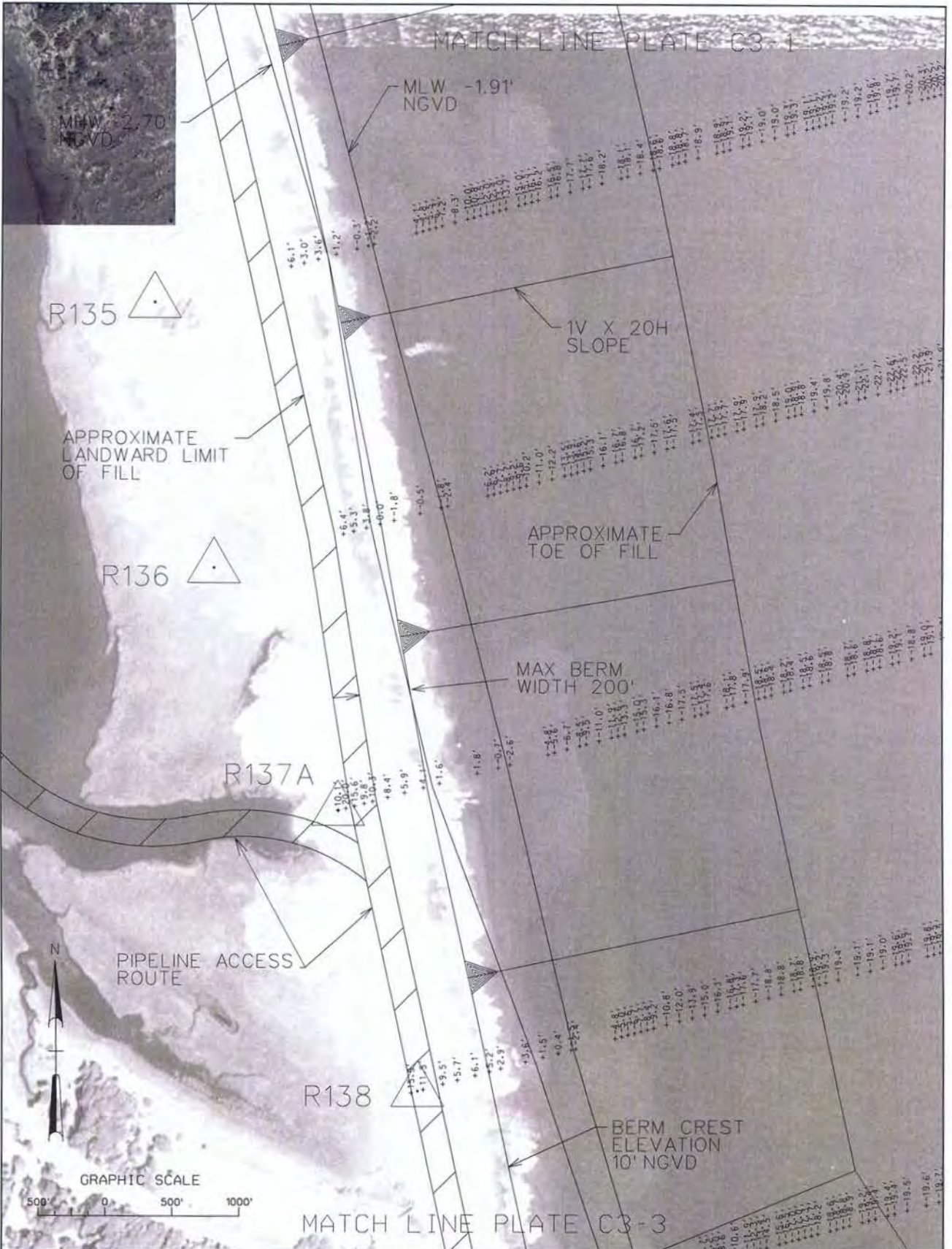




MATCH LINE PLATE C3-2

 <p>US Army Corps of Engineers Jacksonville District</p>	<p>NOT FOR CONSTRUCTION 60% PLAN DRAWINGS</p> <p>DEPARTMENT OF THE ARMY JACKSONVILLE DISTRICT, CORPS OF ENGINEERS JACKSONVILLE, FLORIDA</p>	<p>ST. AUGUSTINE, FLORIDA MAINTENANCE DREDGING PERMIT DRAWING 30 MARCH 2010 POTENTIAL BEACH FILL</p>	<p>PLATE C3-1</p>
---	---	--	-----------------------

PERMIT # 251706001



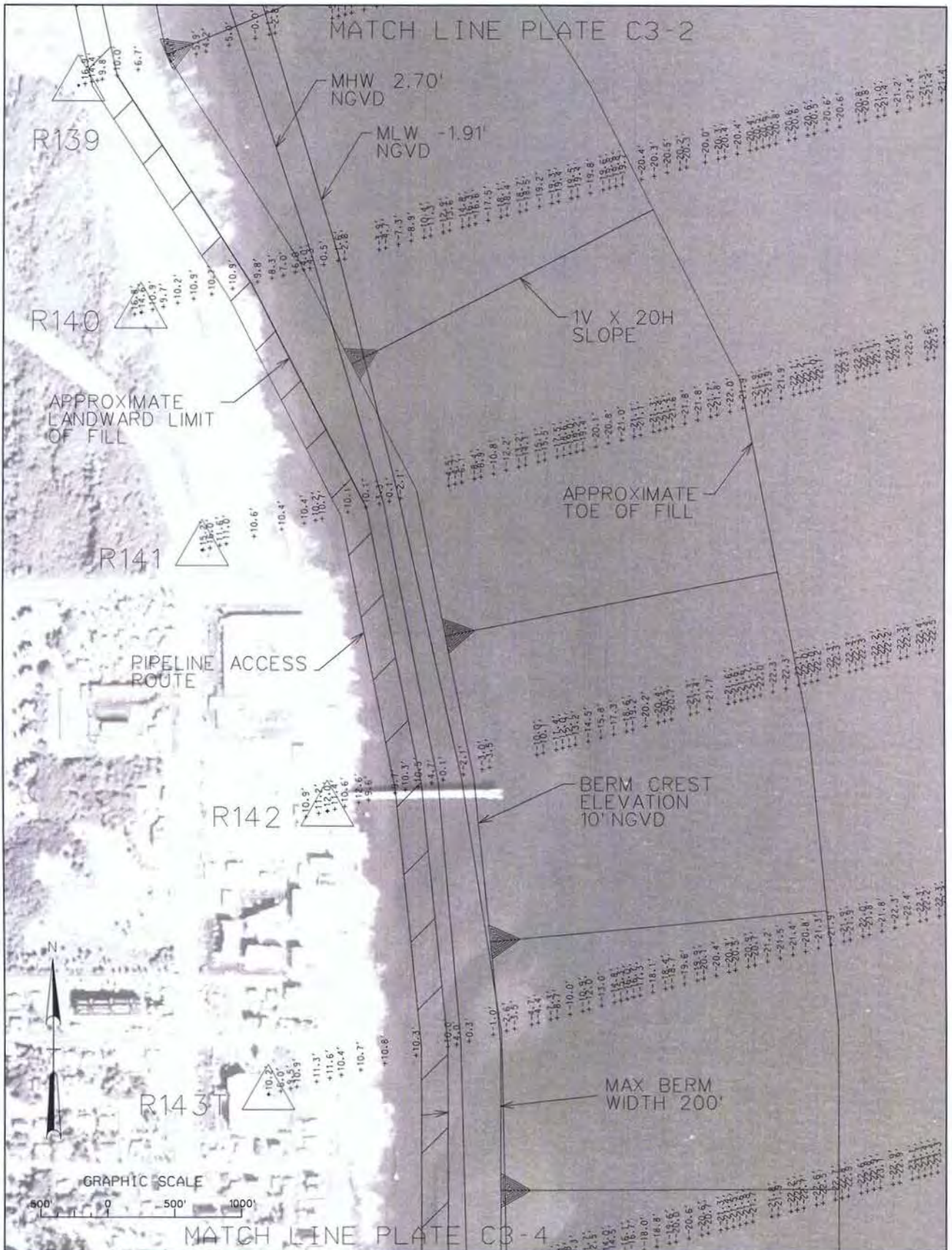
NOT FOR CONSTRUCTION  
60% PLAN DRAWINGS

DEPARTMENT OF THE ARMY  
JACKSONVILLE DISTRICT, CORPS OF ENGINEERS  
JACKSONVILLE, FLORIDA

ST. AUGUSTINE, FLORIDA  
MAINTENANCE DREDGING  
PERMIT DRAWING  
30 MARCH 2010  
POTENTIAL DISPOSAL AREA

PLATE  
C3-2

**PERMIT # 251706001**

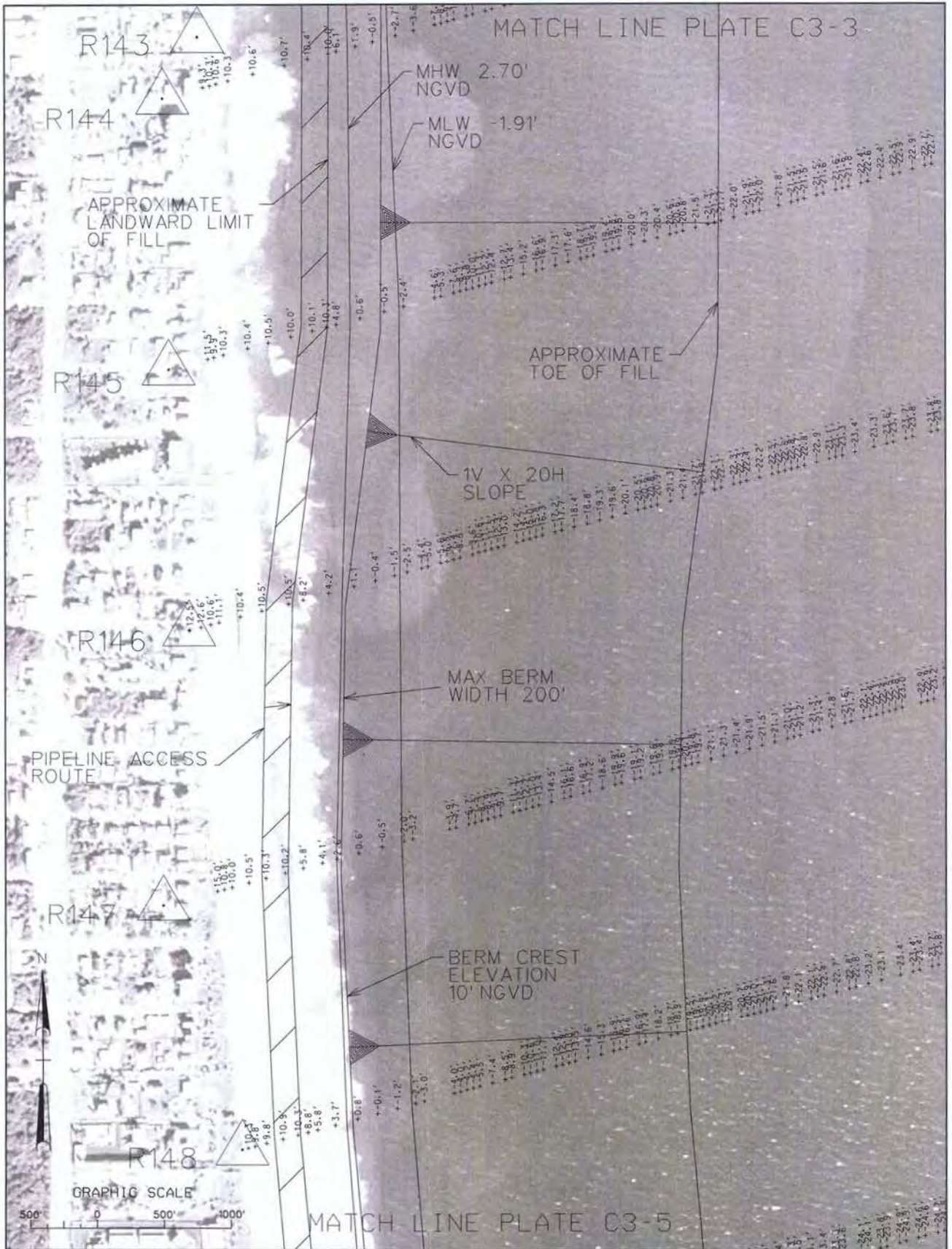


NOT FOR CONSTRUCTION  
60% PLAN DRAWINGS  
DEPARTMENT OF THE ARMY  
JACKSONVILLE DISTRICT, CORPS OF ENGINEERS  
JACKSONVILLE, FLORIDA

ST. AUGUSTINE, FLORIDA  
MAINTENANCE DREDGING  
PERMIT DRAWING  
30 MARCH 2010  
POTENTIAL DISPOSAL AREA

PLATE  
C3-3

PERMIT # 251 706 001

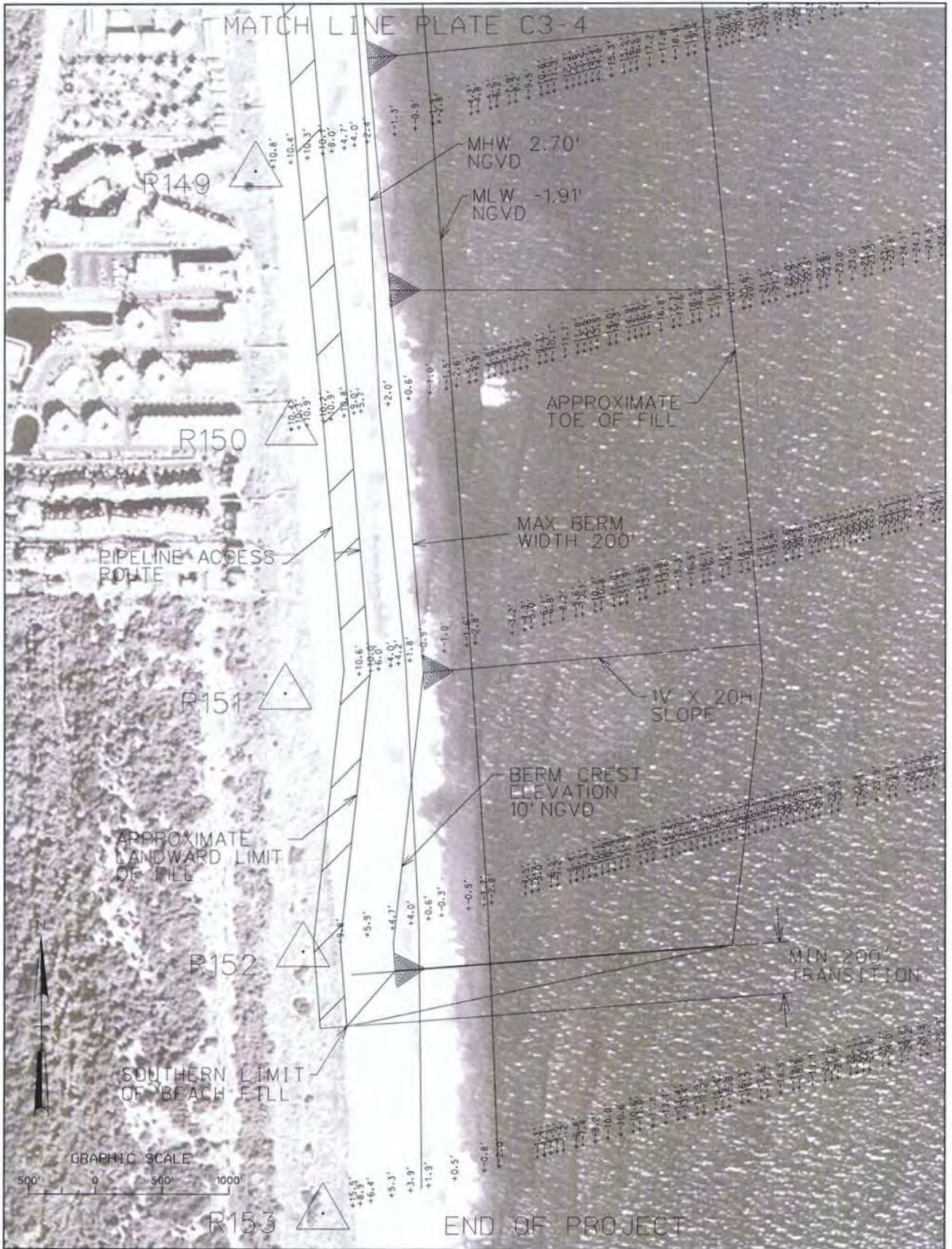



NOT FOR CONSTRUCTION  
 60% PLAN DRAWINGS  
 DEPARTMENT OF THE ARMY  
 JACKSONVILLE DISTRICT, CORPS OF ENGINEERS  
 JACKSONVILLE, FLORIDA

ST. AUGUSTINE, FLORIDA  
 MAINTENANCE DREDGING  
 PERMIT DRAWING  
 30 MARCH 2010  
 POTENTIAL DISPOSAL AREA

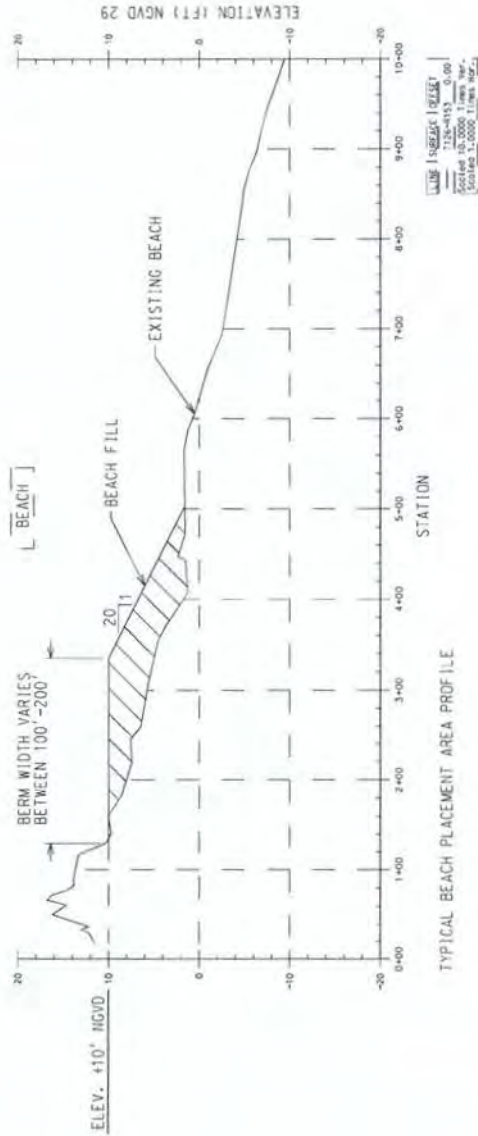
PLATE  
**C3-4**

**PERMIT # 251 706 001**



 <p>US Army Corps of Engineers Jacksonville District</p>	<p>NOT FOR CONSTRUCTION 60% PLAN DRAWINGS</p> <p>DEPARTMENT OF THE ARMY JACKSONVILLE DISTRICT, CORPS OF ENGINEERS JACKSONVILLE, FLORIDA</p>	<p>ST. AUGUSTINE, FLORIDA MAINTENANCE DREDGING PERMIT DRAWING 30 MARCH 2010 POTENTIAL DISPOSAL AREA</p>	<p>PLATE C3-5</p>
---	---	---	-----------------------

**PERMIT # 251 706 001**



US Army Corps  
 of Engineers  
 Jacksonville District

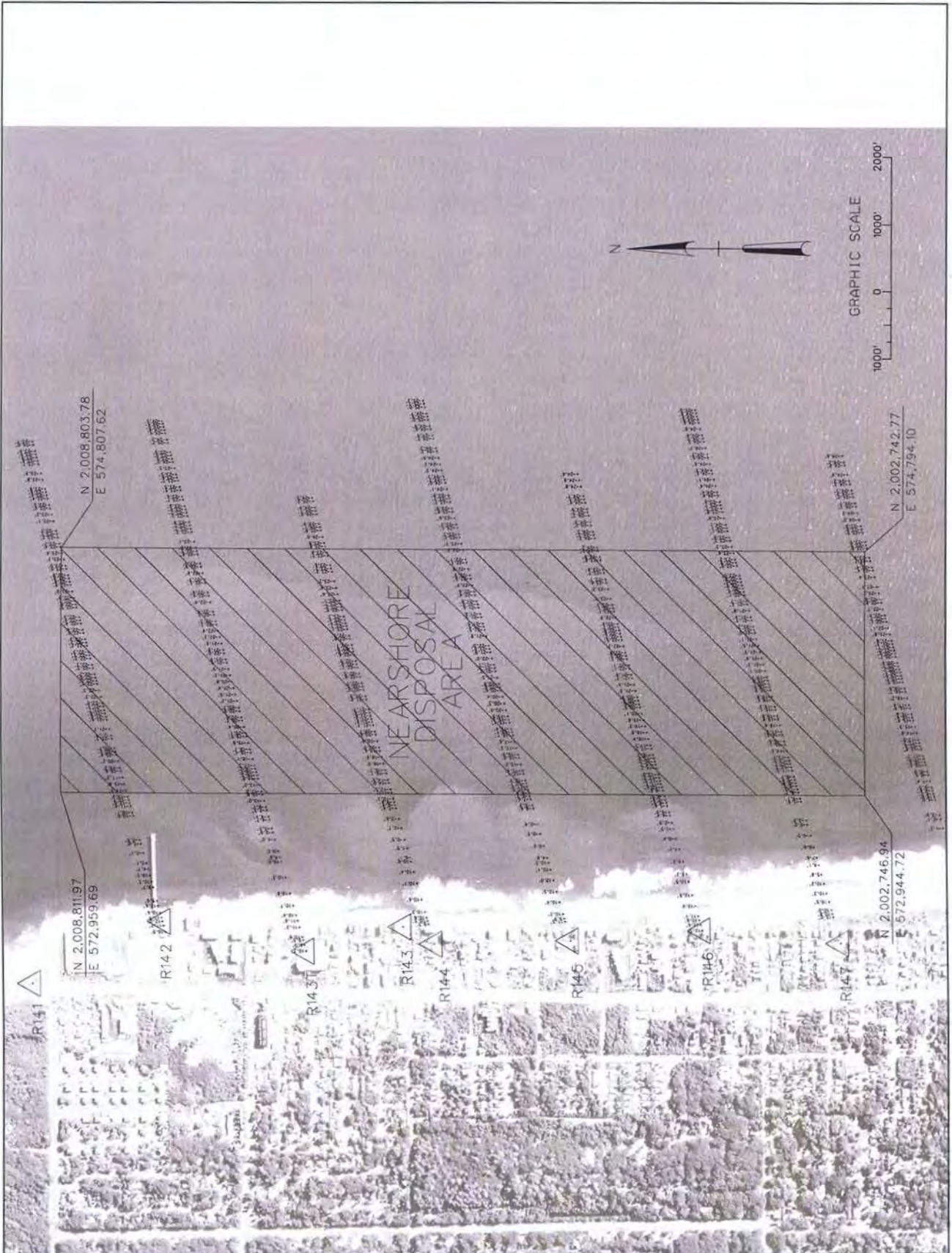
NOT FOR CONSTRUCTION  
 60% PLAN DRAWINGS

DEPARTMENT OF THE ARMY  
 JACKSONVILLE DISTRICT, CORPS OF ENGINEERS  
 JACKSONVILLE, FLORIDA

ST. AUGUSTINE, FLORIDA  
 MAINTENANCE DREDGING  
 PERMIT DRAWING  
 30 MARCH 2010  
 BEACH PROFILE

PLATE  
 C3-6

PERMIT # 251706001



US Army Corps  
of Engineers  
Jacksonville District

NOT FOR CONSTRUCTION  
60% PLAN DRAWINGS

DEPARTMENT OF THE ARMY  
JACKSONVILLE DISTRICT, CORPS OF ENGINEERS  
JACKSONVILLE, FLORIDA

ST. AUGUSTINE, FLORIDA  
MAINTENANCE DREDGING  
PERMIT DRAWING  
30 MARCH 2010  
NEARSHORE DISPOSAL AREA

PLATE  
C3-7

PERMIT # 251 706 001

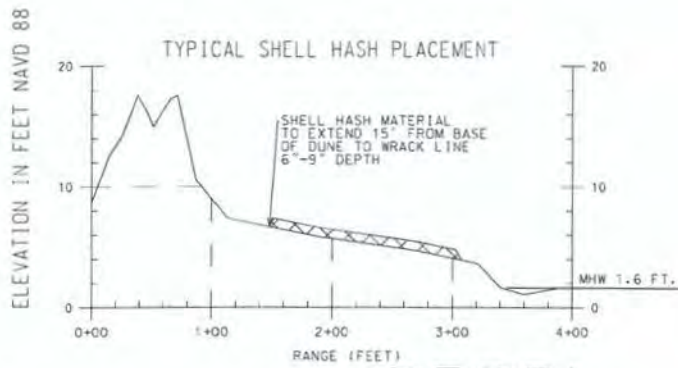
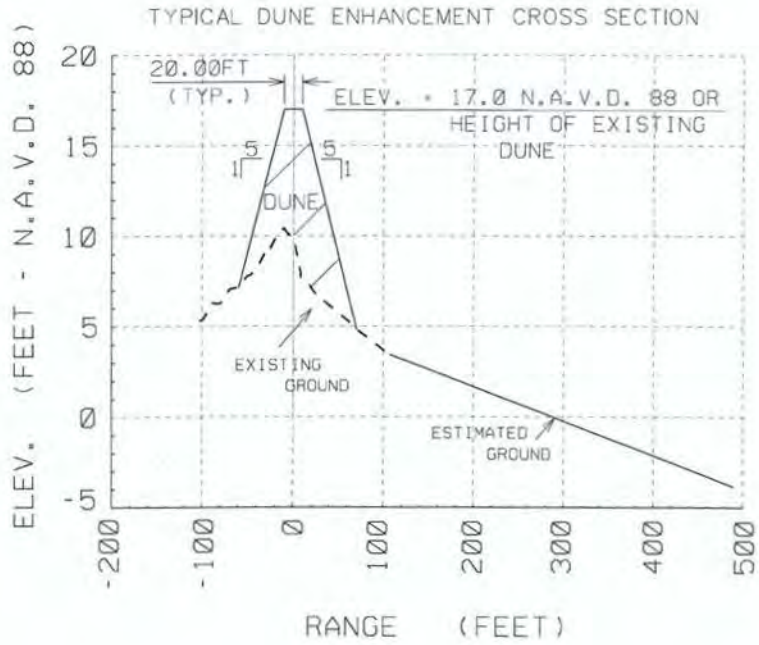


US Army Corps  
of Engineers  
Jacksonville District

NOT FOR CONSTRUCTION  
60% PLAN DRAWINGS  
DEPARTMENT OF THE ARMY  
JACKSONVILLE DISTRICT, CORPS OF ENGINEERS  
JACKSONVILLE, FLORIDA

ST. AUGUSTINE, FLORIDA  
MAINTENANCE DREDGING  
PERMIT DRAWING  
30 MARCH 2010  
PROFILES

PLATE  
C3-8



LINE	SURFACE	OFFSET
---	Beach	0.00
Scaled 10,000 Times Ver.		
Scaled 1,000 Times Hor.		

NOTE:

1. PROFILES FOR 2010 DUNE ENHANCEMENT AND SHELL HASH PLACEMENT ONLY.
2. CONTRACTOR TO AVOID PLACING SHELL HASH ON FORE-DUNE VEGETATION.

PERMIT # 251706001



GRAPHIC SCALE  
250' 0 250' 500'



ESTUARINE AND MARINE WETLANDS

NOTE:  
1. WETLAND OUTLINES PROVIDED BY US FISH AND WILDLIFE SERVICE NATIONAL WETLAND INVENTORY  
2. PIPELINE ROUTE WILL BE PLACED TO AVOID TEMPORARY WETLAND IMPACTS



US Army Corps  
of Engineers  
Jacksonville District

NOT FOR CONSTRUCTION  
60% PLAN DRAWINGS

DEPARTMENT OF THE ARMY  
JACKSONVILLE DISTRICT CORPS OF ENGINEERS  
JACKSONVILLE, FLORIDA

ST. AUGUSTINE, FLORIDA  
MAINTENANCE DREDGING  
PERMIT DRAWING  
30 MARCH 2010  
PIPELINE ACCESS ROUTE

PLATE  
C4-1

PERMIT # 251706001