

U.S. Army Corps of Engineers  
Jacksonville District, Jacksonville, Florida

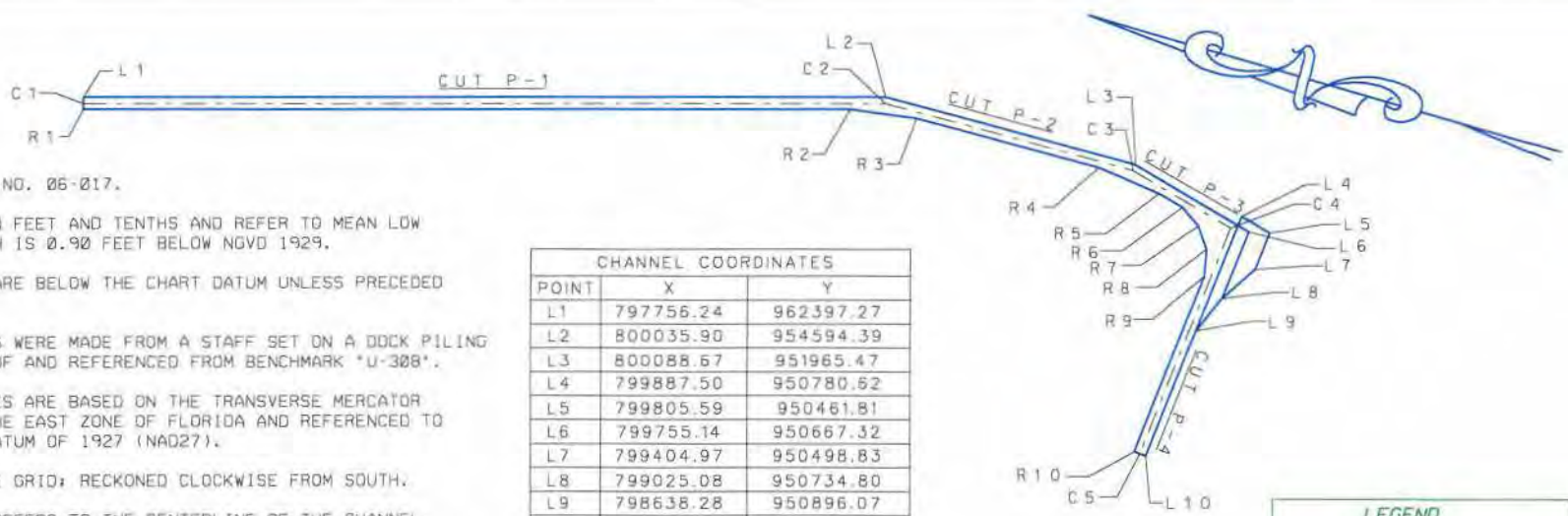
**WATER QUALITY CERTIFICATION APPLICATION  
FOR MAINTENANCE DREDGING OF  
THE INTRACOASTAL WATERWAY IN THE  
VICINITY OF JUPITER INLET  
WITH BEACH PLACEMENT**

PROJECT LOCATION & LIMITS OF WORK

PREPARED BY: LEF      REVIEWED BY: DWB

DATE: APR 07      DRAWING NO. 1

**PERMIT # 262913001**

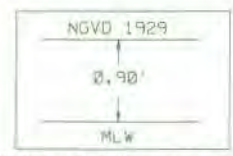


**SURVEY NOTES:**

1. REFER TO SURVEY NO. 06-017.
2. SOUNDINGS ARE IN FEET AND TENTHS AND REFER TO MEAN LOW WATER (MLW) WHICH IS 0.90 FEET BELOW NGVD 1929.
3. ALL ELEVATIONS ARE BELOW THE CHART DATUM UNLESS PRECEDED BY A (-) SIGN.
4. TIDAL REDUCTIONS WERE MADE FROM A STAFF SET ON A DOCK PILING IN THE VICINITY OF AND REFERENCED FROM BENCHMARK \*U-308\*.
5. PLANE COORDINATES ARE BASED ON THE TRANSVERSE MERCATOR PROJECTION FOR THE EAST ZONE OF FLORIDA AND REFERENCED TO NORTH AMERICAN DATUM OF 1927 (NAD27).
6. ALL AZIMUTHS ARE GRID; RECKONED CLOCKWISE FROM SOUTH.
7. ALL STATIONING REFERS TO THE CENTERLINE OF THE CHANNEL.
8. SURVEY WAS PERFORMED BY ARC SURVEYING USING DIFFERENTIAL GPS FOR POSITIONING AND UTILIZING THE USCG NAVBEACON SYSTEM AS THE REFERENCE SITE. VERTICAL MEASUREMENTS WERE MADE USING A KNUDSEN DEPTH RECORDER WITH A 200KHZ (HIGH FREQUENCY) TRANSDUCER.
9. AIDS TO NAVIGATION WERE LOCATED DURING THIS SURVEY.
10. THE INFORMATION DEPICTED ON THIS MAP REPRESENTS THE RESULTS OF SURVEYS MADE ON THE DATES INDICATED ABOVE AND CAN ONLY BE CONSIDERED AS INDICATING THE GENERAL CONDITIONS AT THAT TIME. THIS CHART IS SOLELY FOR THE DISTRIBUTION OF AVAILABLE DEPTHS AT THE TIME OF THE SURVEY AND IS NOT TO BE USED FOR NAVIGATION.
11. SURVEY ACCURACY PERFORMANCE STANDARDS, QUALITY CONTROL, AND QUALITY ASSURANCE REQUIREMENTS WERE FOLLOWED DURING THIS SURVEY IN ACCORDANCE WITH USACE EM 1110-2-1003, HYDROGRAPHIC SURVEYING, 1 JAN 02.

| VESSEL     | DATE OF SURVEY | CUT          |
|------------|----------------|--------------|
| GREY WITCH | 27 OCT 2005    | P-1 THRU P-4 |

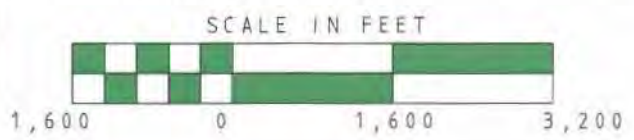
| CHANNEL COORDINATES |           |           |
|---------------------|-----------|-----------|
| POINT               | X         | Y         |
| L1                  | 797756.24 | 962397.27 |
| L2                  | 800035.90 | 954594.39 |
| L3                  | 800088.67 | 951965.47 |
| L4                  | 799887.50 | 950780.62 |
| L5                  | 799805.59 | 950461.81 |
| L6                  | 799755.14 | 950667.32 |
| L7                  | 799404.97 | 950498.83 |
| L8                  | 799025.08 | 950734.80 |
| L9                  | 798638.28 | 950896.07 |
| L10                 | 797260.61 | 951023.40 |
| C1                  | 797696.25 | 962379.74 |
| C2                  | 799973.58 | 954584.83 |
| C3                  | 800026.01 | 951972.75 |
| C4                  | 799739.36 | 950857.08 |
| C5                  | 797266.36 | 951085.63 |
| R1                  | 797636.26 | 962362.21 |
| R2                  | 799815.50 | 954903.04 |
| R3                  | 799918.12 | 954233.65 |
| R4                  | 799956.50 | 952321.42 |
| R5                  | 799878.38 | 951649.31 |
| R6                  | 799809.21 | 951380.11 |
| R7                  | 799670.43 | 951173.08 |
| R8                  | 799465.55 | 951028.41 |
| R9                  | 799193.21 | 950970.32 |
| R10                 | 797272.11 | 951147.87 |



RELATIONSHIP BETWEEN NGVD 1929 AND MEAN LOW WATER

| LEGEND               |                      |
|----------------------|----------------------|
| BM                   | BENCHMARK            |
| Lighted Beacon       | LIGHTED BEACON       |
| Green Daybeacon      | GREEN DAYBEACON      |
| Red Daybeacon        | RED DAYBEACON        |
| Red Lighted Body     | RED LIGHTED BODY     |
| Green Lighted Body   | GREEN LIGHTED BODY   |
| Can Body             | CAN BODY             |
| Nun Body             | NUN BODY             |
| Tide Staff           | TIDE STAFF           |
| Grab Sample Location | GRAB SAMPLE LOCATION |

| SEAGRASS SURVEY LEGEND |                        |
|------------------------|------------------------|
| [Pink]                 | HALOPHILA DECIPIENS    |
| [Green]                | HALOPHILA JOHNSONII    |
| [Brown]                | HALODULE WRIGHTII      |
| [Blue]                 | SYRINGODIUM FILIFORME  |
| [Light Blue]           | THALASSIA TESTUDINUM   |
| [White]                | HD/HJ                  |
| [Yellow]               | HJ/HW                  |
| [Orange]               | HJ/HW/SF               |
| [Purple]               | HW/SF                  |
| [Light Green]          | SF/TT                  |
| [Light Green]          | MIXED SEAGRASSES W/HJ  |
| [Grey]                 | MIXED SEAGRASSES WO/HJ |



U.S. Army Corps of Engineers  
Jacksonville District, Jacksonville, Florida

**WATER QUALITY CERTIFICATION APPLICATION  
FOR MAINTENANCE DREDGING OF  
THE INTRACOASTAL WATERWAY IN THE  
VICINITY OF JUPITER INLET  
WITH BEACH PLACEMENT  
PLAN VIEW WITH CONTROL POINTS**

PREPARED BY: LEF      REVIEWED BY: DWB  
DATE: APR 07      DRAWING NO: 2





APPROXIMATE SHORELINE

STA. 0+00

STA. 5+00

STA. 10+00

STA. 15+00

JUPITER ISLAND

RGE. 125

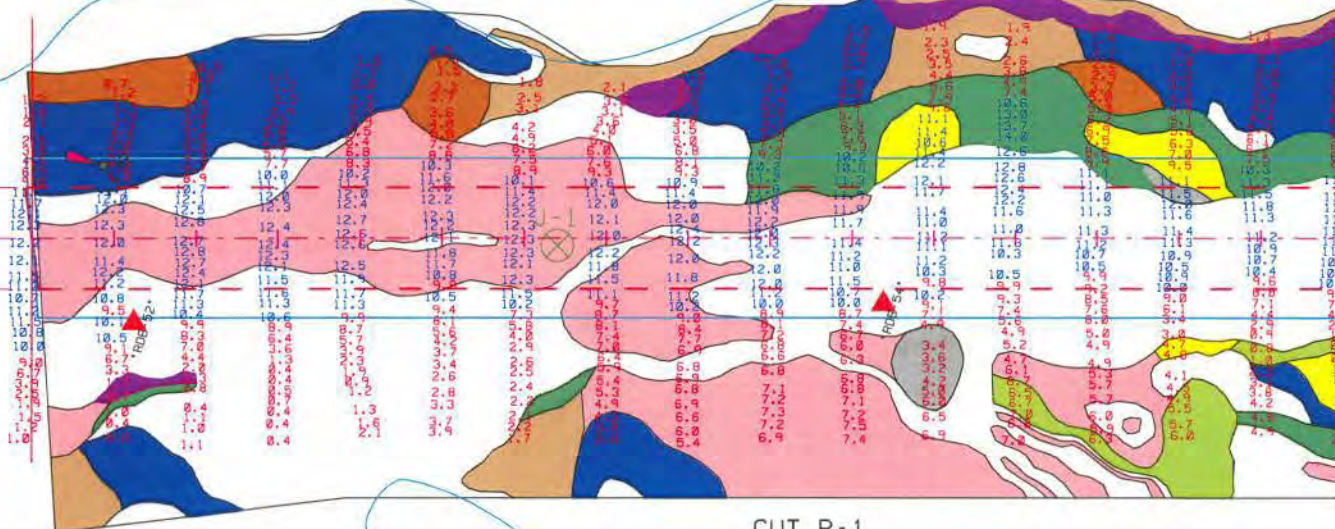
RGE. 62.5

RGE. 00

RGE. 125

RGE. 62.5

RGE. 00



MATCHLINE SHEET NO. 4 STA. 16+00

CUT P-1  
AZ=343-42-50

APPROXIMATE SHORELINE

TEQUESTA

| AIDS TO NAVIGATION | PLANE COORDINATES |         | LATITUDE     | LONGITUDE    |
|--------------------|-------------------|---------|--------------|--------------|
|                    | X                 | Y       |              |              |
| DBN-52 (02/05)     | 797.626           | 962.232 | 26°58'41.02" | 80°05'10.27" |
| LT-53 (02/05)      | 797.803           | 962.316 | 26°58'41.84" | 80°05'08.30" |
| DBN-54 (02/05)     | 797.905           | 961.381 | 26°58'32.37" | 80°05'07.26" |

SCALE IN FEET



NOTES:

1. FOR SURVEY NOTES, CONTROL POINTS, LEGEND AND TIDAL DATUM REFER TO DRAWING NO. 2.

U.S. Army Corps of Engineers  
Jacksonville District, Jacksonville, Florida

WATER QUALITY CERTIFICATION APPLICATION  
FOR MAINTENANCE DREDGING OF  
THE INTRACOASTAL WATERWAY IN THE  
VICINITY OF JUPITER INLET  
WITH BEACH PLACEMENT

PLAN VIEW CUT P-1 STA. 0+00 - 16+00

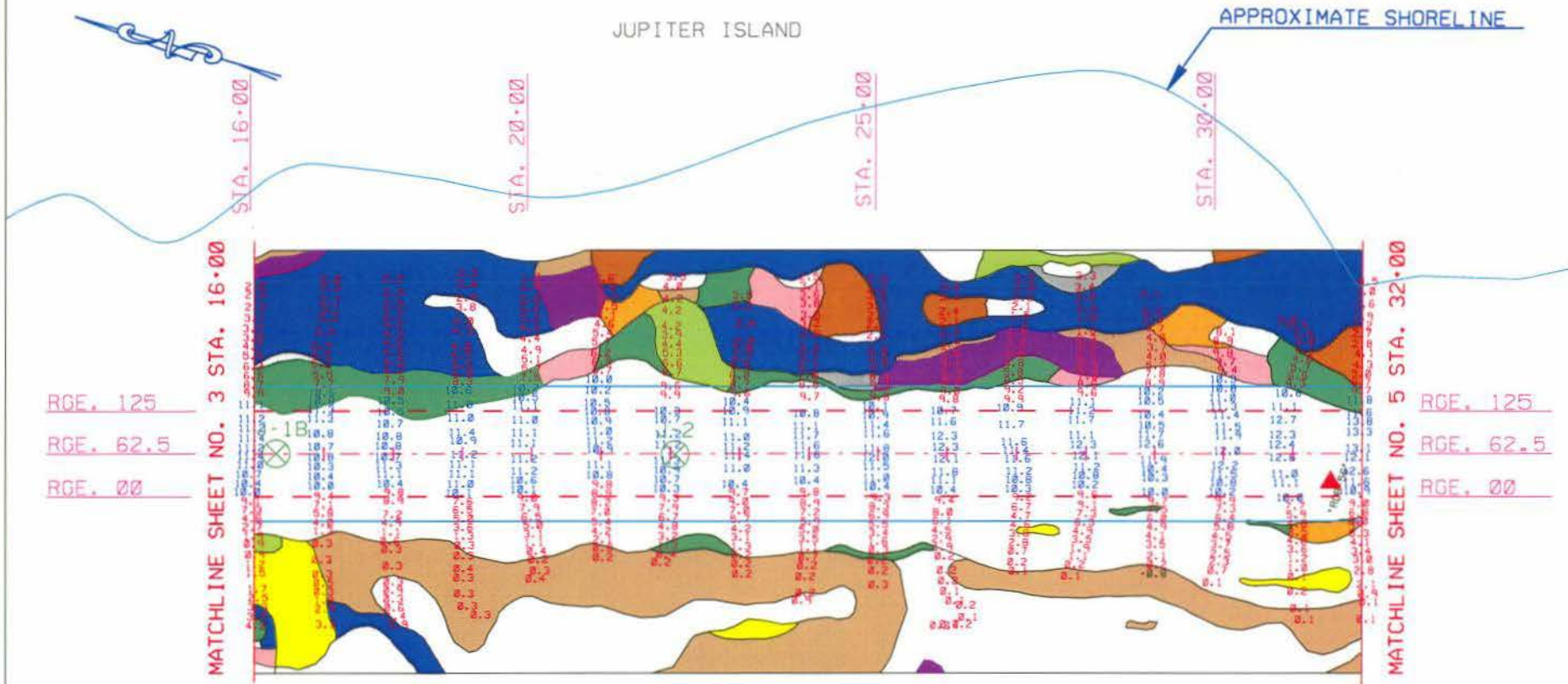
PREPARED BY: LEF REVIEWED BY: DWB

DATE: APR 07

DRAWING NO. 3

PERMIT # 262018001

PERMIT # 262913001



CUT P-1  
AZ-343-42-50

| AID TO NAVIGATION | PLANE COORDINATES |         | LATITUDE     | LONGITUDE    |
|-------------------|-------------------|---------|--------------|--------------|
|                   | X                 | Y       |              |              |
| DBN-56 (02/05)    | 798.537           | 959.341 | 26°58'12.33" | 80°05'00.45" |



NOTES:  
1. FOR SURVEY NOTES, CONTROL POINTS, LEGEND AND TIDAL DATUM REFER TO DRAWING NO. 2.

U.S. Army Corps of Engineers  
Jacksonville District, Jacksonville, Florida

WATER QUALITY CERTIFICATION APPLICATION  
FOR MAINTENANCE DREDGING OF  
THE INTRACOASTAL WATERWAY IN THE  
VICINITY OF JUPITER INLET  
WITH BEACH PLACEMENT

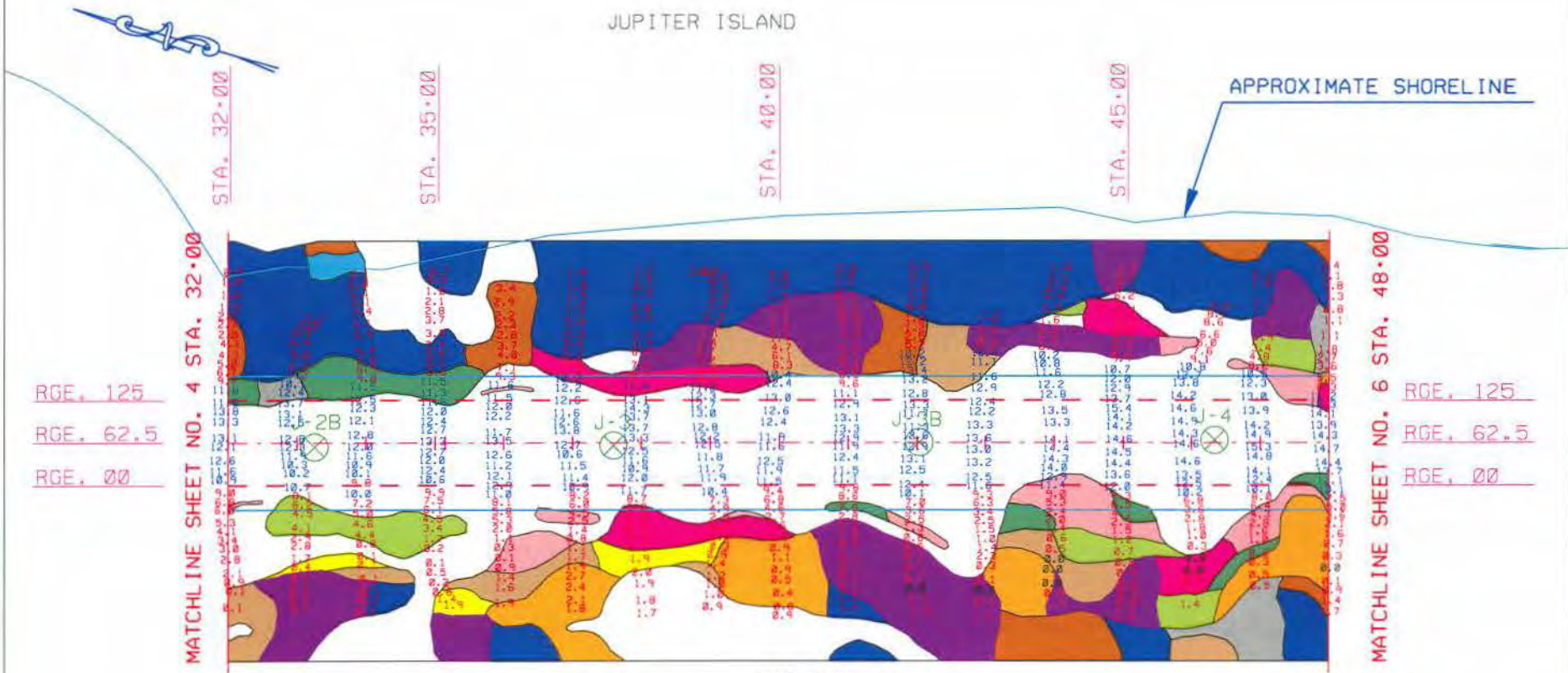
PLAN VIEW CUT P-1 STA. 16+00 - 32+00

PREPARED BY: LEF      REVIEWED BY: DWB

DATE: APR 07      DRAWING NO. 4



JUPITER ISLAND



CUT P-1  
AZ-343-42-50

NOTES:  
1. FOR SURVEY NOTES, CONTROL POINTS,  
LEGEND AND TIDAL DATUM REFER TO  
DRAWING NO. 2.



TEQUESTA

U.S. Army Corps of Engineers  
Jacksonville District, Jacksonville, Florida

WATER QUALITY CERTIFICATION APPLICATION  
FOR MAINTENANCE DREDGING OF  
THE INTRACOASTAL WATERWAY IN THE  
VICINITY OF JUPITER INLET  
WITH BEACH PLACEMENT

PLAN VIEW CUT P-1 STA. 32+00 - 48+00

PREPARED BY: LEF      REVIEWED BY: DWB

DATE: APR 07      DRAWING NO. 5

PERMIT # 269913001



JUPITER ISLAND

STA. 50+00

STA. 55+00

STA. 60+00

APPROXIMATE SHORELINE

MATCHLINE SHEET NO. 5 STA. 48+00

MATCHLINE SHEET NO. 7 STA. 64+00

RGE. 125  
RGE. 62.5  
RGE. 00

RGE. 125  
RGE. 62.5  
RGE. 00

CUT P-1  
AZ=343-42-50

TEQUESTA

APPROXIMATE SHORELINE

| AID TO NAVIGATION | PLANE COORDINATES |         | LATITUDE     | LONGITUDE    |
|-------------------|-------------------|---------|--------------|--------------|
|                   | X                 | Y       |              |              |
| DBN-57 (02/05)    | 799,264           | 957,296 | 26°57'52.02" | 80°04'52.57" |

SCALE IN FEET



200 0 200 400

NOTES:

1. FOR SURVEY NOTES, CONTROL POINTS, LEGEND AND TIDAL DATUM REFER TO DRAWING NO. 2.

U.S. Army Corps of Engineers  
Jacksonville District, Jacksonville, Florida

WATER QUALITY CERTIFICATION APPLICATION  
FOR MAINTENANCE DREDGING OF  
THE INTRACOASTAL WATERWAY IN THE  
VICINITY OF JUPITER INLET

WITH BEACH PLACEMENT

PLAN VIEW CUT P-1 STA. 48+00 - 64+00

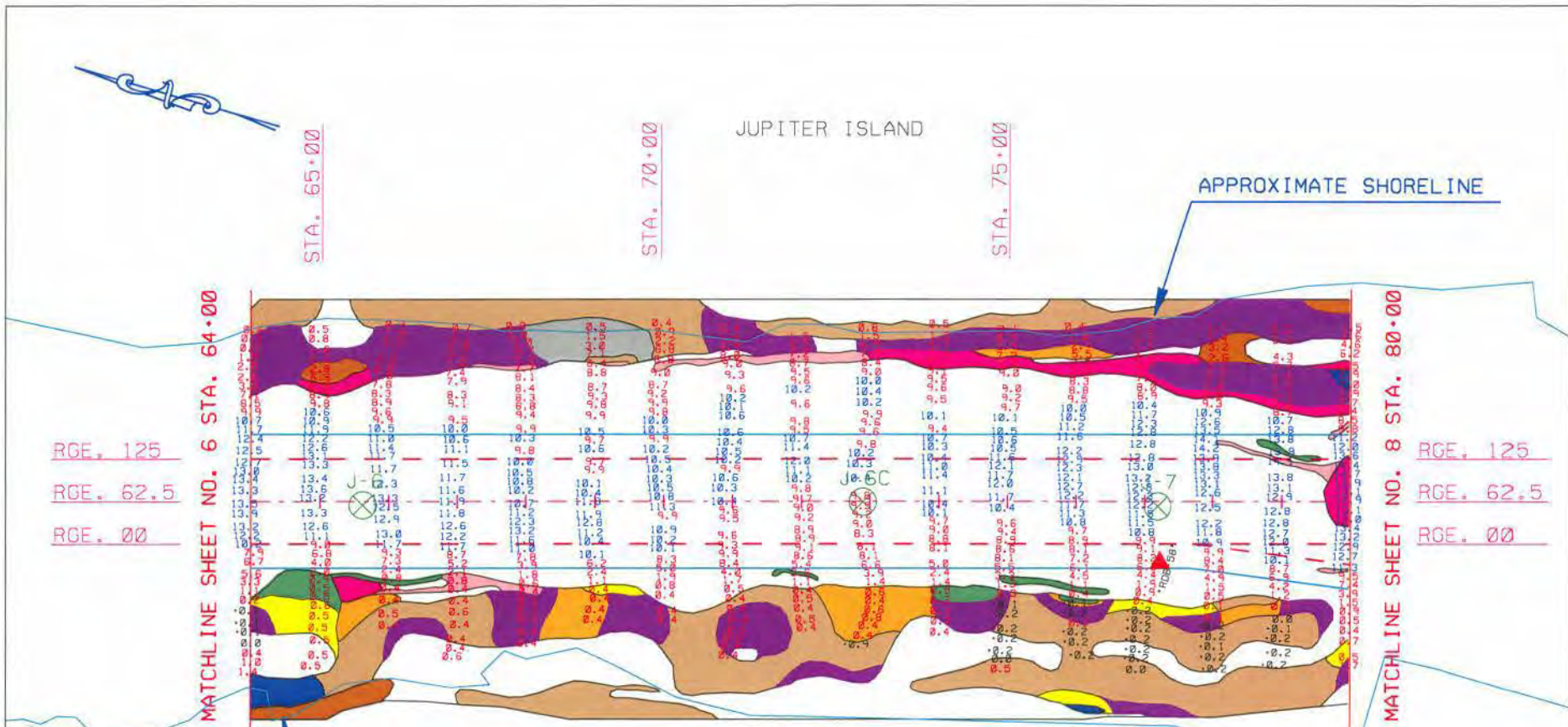
PREPARED BY: LEF REVIEWED BY: DWB

DATE: APR 07 DRAWING NO. 6

PERMIT # 262913001



PERMIT # 262913001



JUPITER ISLAND

APPROXIMATE SHORELINE

APPROXIMATE SHORELINE

CUT P-1  
AZ-343-42-50

RGE. 125  
RGE. 62.5  
RGE. 00

RGE. 125  
RGE. 62.5  
RGE. 00

MATCHLINE SHEET NO. 6 STA. 64+00

MATCHLINE SHEET NO. 8 STA. 80+00

| AID TO NAVIGATION | PLANE COORDINATES |         | LATITUDE     | LONGITUDE    |
|-------------------|-------------------|---------|--------------|--------------|
|                   | X                 | Y       |              |              |
| DBN-58 (02/05)    | 799,778           | 954,943 | 26°57'28.68" | 80°04'47.18" |

TEQUESTA

NOTES:  
1. FOR SURVEY NOTES, CONTROL POINTS, LEGEND AND TIDAL DATUM REFER TO DRAWING NO. 2.

U.S. Army Corps of Engineers  
Jacksonville District, Jacksonville, Florida

WATER QUALITY CERTIFICATION APPLICATION  
FOR MAINTENANCE DREDGING OF  
THE INTRACOASTAL WATERWAY IN THE  
VICINITY OF JUPITER INLET  
WITH BEACH PLACEMENT

PLAN VIEW CUT P-1 STA. 64+00 - 80+00

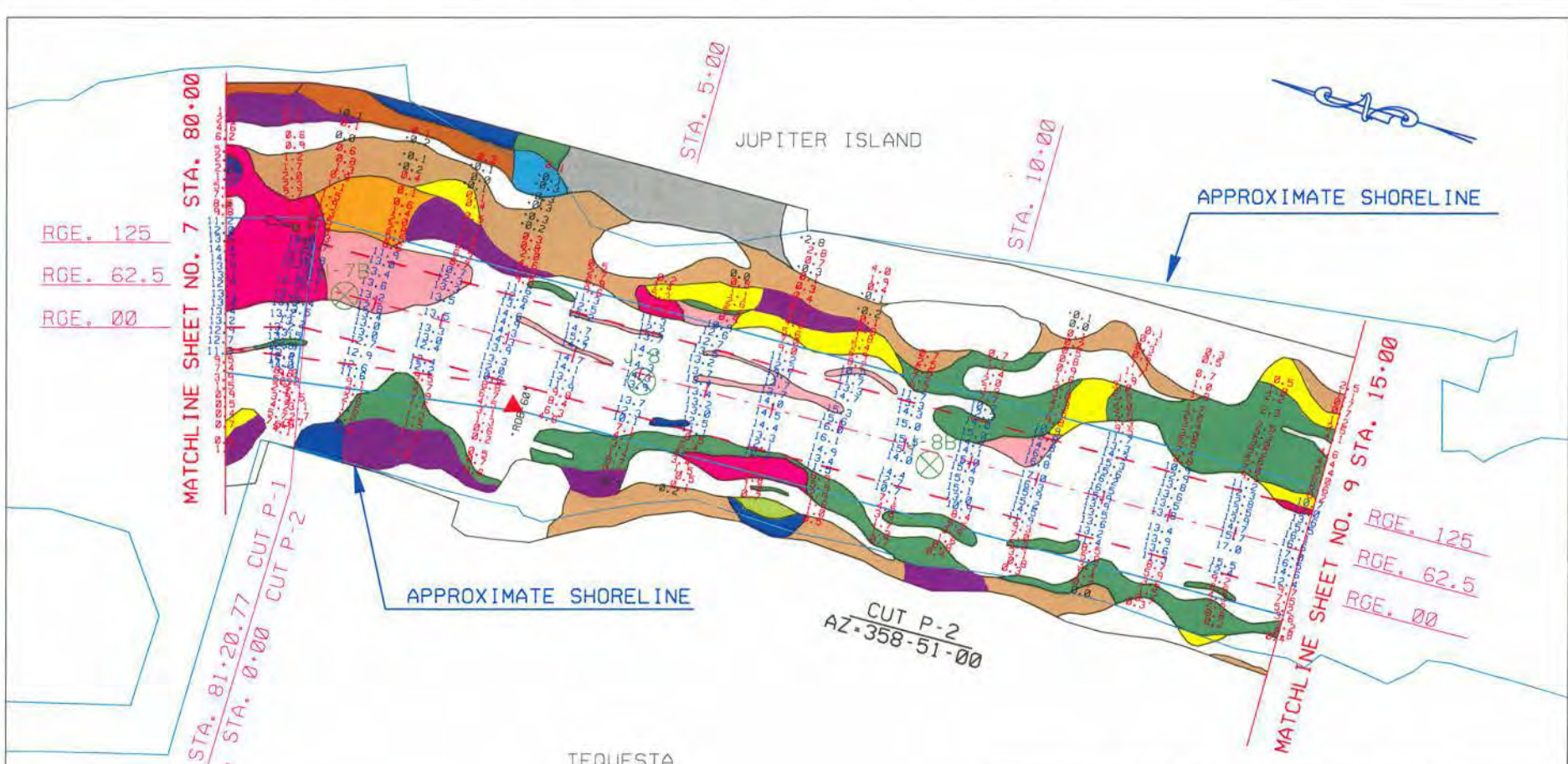
PREPARED BY: LEF REVIEWED BY: DWB

DATE: APR 07 DRAWING NO. 7





PERMIT # 262913001



RGE. 125  
RGE. 62.5  
RGE. 00

MATCHLINE SHEET NO. 7 STA. 80+00

P.I. STA. 81+20.77 CUT P-1  
P.I. STA. 0+00 CUT P-2

STA. 5+00

JUPITER ISLAND

STA. 10+00

APPROXIMATE SHORELINE

APPROXIMATE SHORELINE

CUT P-2  
AZ-358-51-00

MATCHLINE SHEET NO. 9 STA. 15+00  
RGE. 125  
RGE. 62.5  
RGE. 00

TEQUESTA

| AIDS TO NAVIGATION | PLANE COORDINATES |         | LATITUDE     | LONGITUDE    |
|--------------------|-------------------|---------|--------------|--------------|
|                    | X                 | Y       |              |              |
| LT-59 (02/05)      | 808.046           | 954.621 | 26°57'25.47" | 80°04'44.14" |
| DBN-68 (02/05)     | 799.881           | 954.250 | 26°57'21.81" | 80°04'46.00" |

NOTES:  
1. FOR SURVEY NOTES, CONTROL POINTS, LEGEND AND TIDAL DATUM REFER TO DRAWING NO. 2.

U.S. Army Corps of Engineers  
Jacksonville District, Jacksonville, Florida

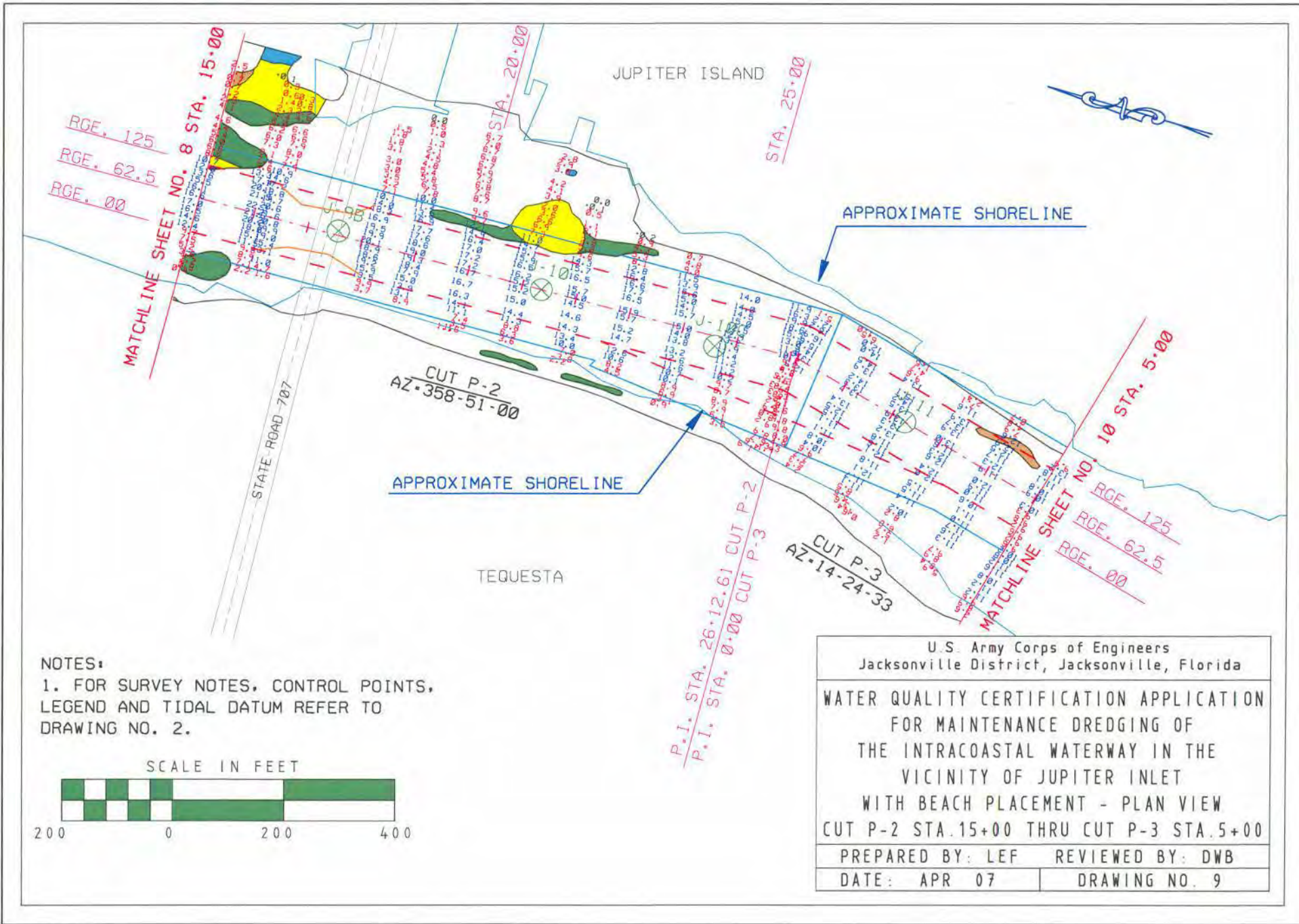
WATER QUALITY CERTIFICATION APPLICATION  
FOR MAINTENANCE DREDGING OF  
THE INTRACOASTAL WATERWAY IN THE  
VICINITY OF JUPITER INLET  
WITH BEACH PLACEMENT - PLAN VIEW  
CUT P-1 STA. 80+00 THRU CUT P-2 STA. 15+00

|                  |                  |
|------------------|------------------|
| PREPARED BY: LEF | REVIEWED BY: DWB |
| DATE: APR 07     | DRAWING NO. 8    |





PERMIT # 262913001



NOTES:

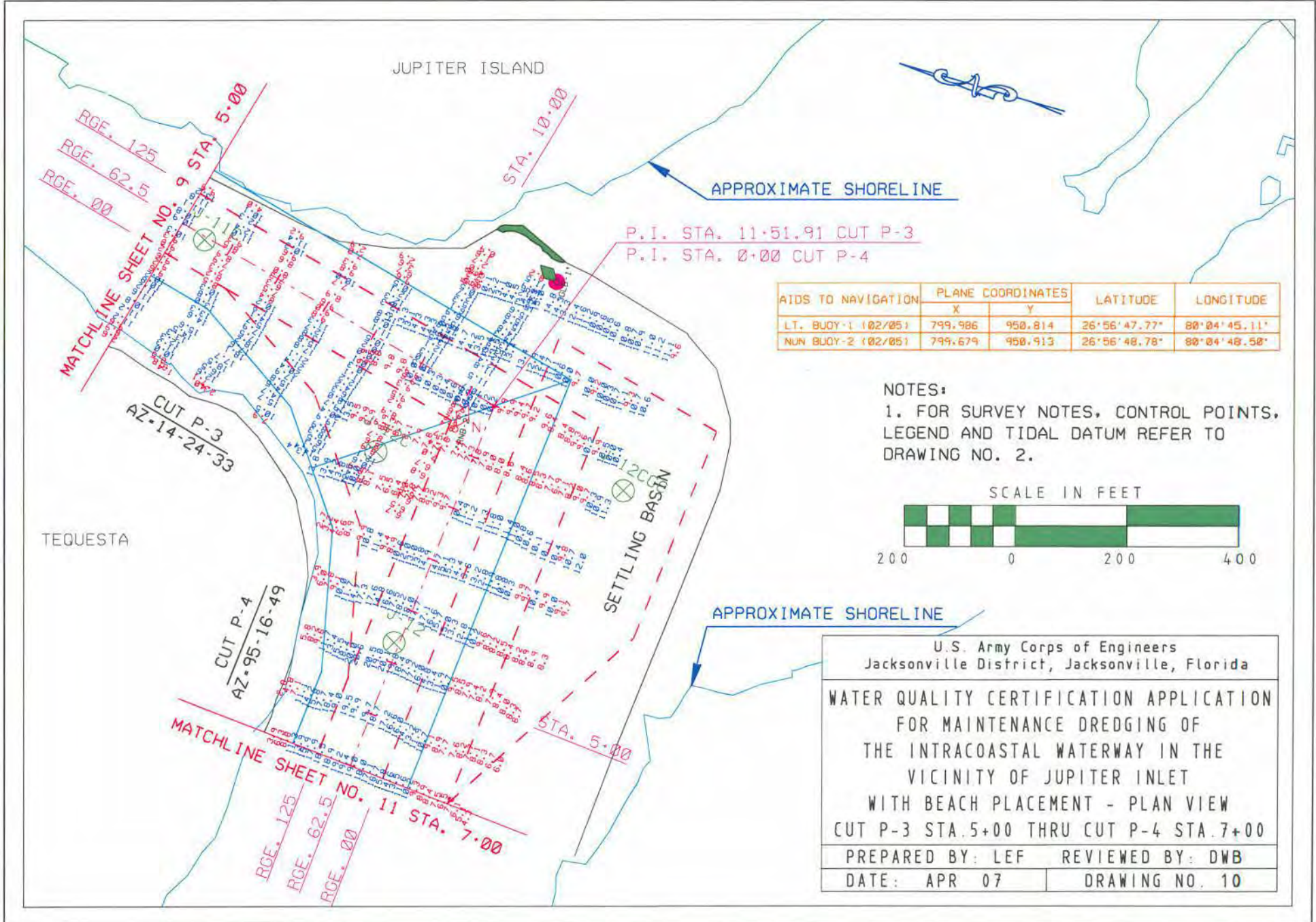
1. FOR SURVEY NOTES, CONTROL POINTS, LEGEND AND TIDAL DATUM REFER TO DRAWING NO. 2.

SCALE IN FEET



|  |                  |
|--|------------------|
| U.S. Army Corps of Engineers<br>Jacksonville District, Jacksonville, Florida   |                  |
| WATER QUALITY CERTIFICATION APPLICATION<br>FOR MAINTENANCE DREDGING OF<br>THE INTRACOASTAL WATERWAY IN THE<br>VICINITY OF JUPITER INLET<br>WITH BEACH PLACEMENT - PLAN VIEW<br>CUT P-2 STA. 15+00 THRU CUT P-3 STA. 5+00 |                  |
| PREPARED BY: LEF   | REVIEWED BY: DWB |
| DATE: APR 07   | DRAWING NO. 9    |





P.I. STA. 11+51.91 CUT P-3  
 P.I. STA. 0+00 CUT P-4

| AIDS TO NAVIGATION | PLANE COORDINATES |         | LATITUDE     | LONGITUDE    |
|--------------------|-------------------|---------|--------------|--------------|
|                    | X                 | Y       |              |              |
| LT. BUOY-1 (02/05) | 799.986           | 950.814 | 26°56'47.77" | 80°04'45.11" |
| NUM BUOY-2 (02/05) | 799.679           | 950.913 | 26°56'48.78" | 80°04'48.58" |

NOTES:  
 1. FOR SURVEY NOTES, CONTROL POINTS, LEGEND AND TIDAL DATUM REFER TO DRAWING NO. 2.



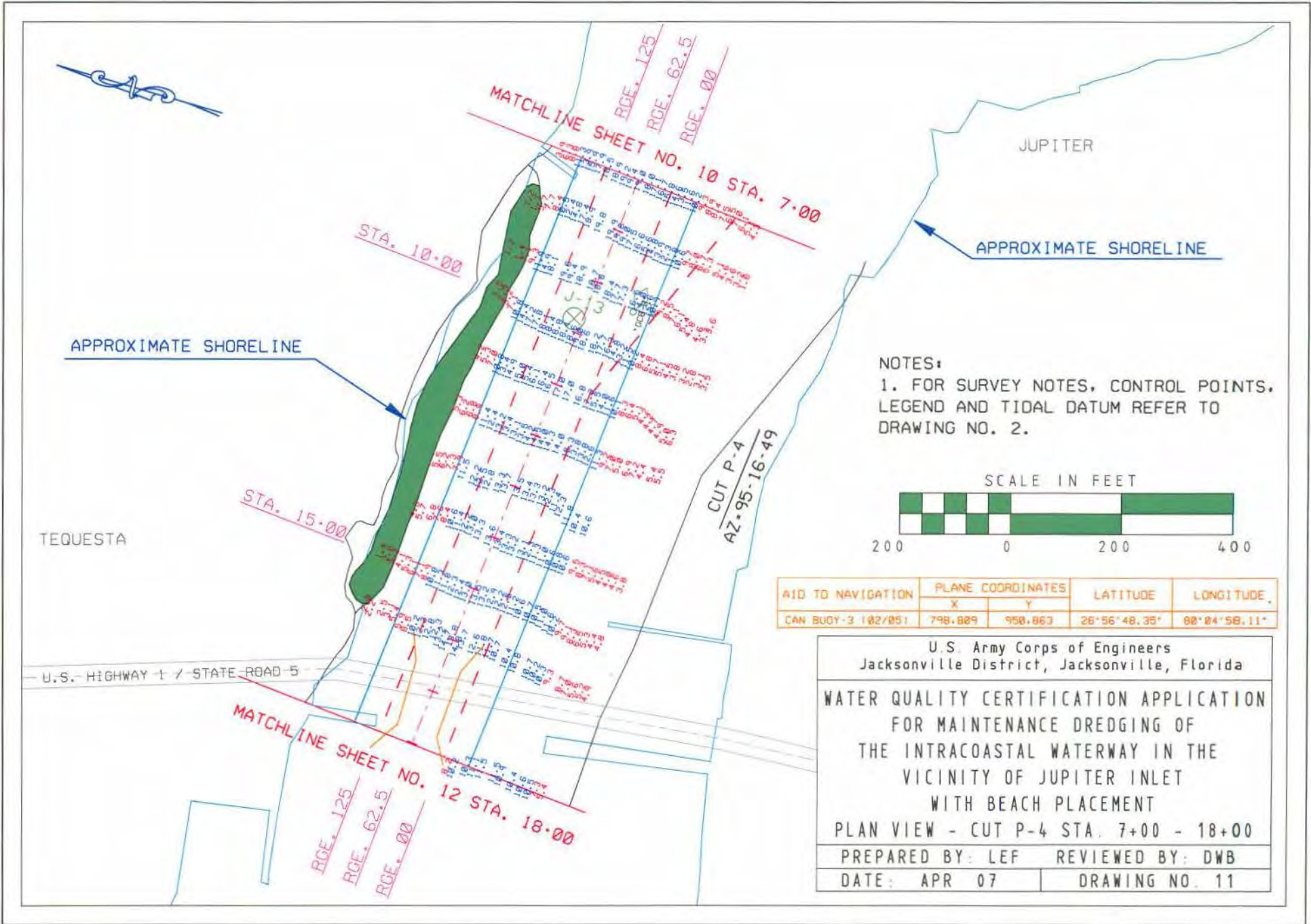
U.S. Army Corps of Engineers  
 Jacksonville District, Jacksonville, Florida

WATER QUALITY CERTIFICATION APPLICATION  
 FOR MAINTENANCE DREDGING OF  
 THE INTRACOASTAL WATERWAY IN THE  
 VICINITY OF JUPITER INLET  
 WITH BEACH PLACEMENT - PLAN VIEW  
 CUT P-3 STA. 5+00 THRU CUT P-4 STA. 7+00

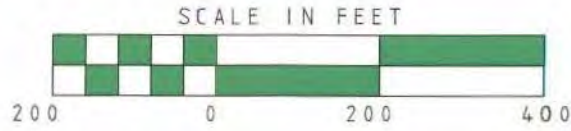
|                  |                  |
|------------------|------------------|
| PREPARED BY: LEF | REVIEWED BY: DWB |
| DATE: APR 07     | DRAWING NO. 10   |

PERMIT # 262913001





NOTES:  
 1. FOR SURVEY NOTES, CONTROL POINTS, LEGEND AND TIDAL DATUM REFER TO DRAWING NO. 2.



| AID TO NAVIGATION  | PLANE COORDINATES |         | LATITUDE     | LONGITUDE    |
|--------------------|-------------------|---------|--------------|--------------|
|                    | X                 | Y       |              |              |
| CAN BUCY-3 102/051 | 798.889           | 950.863 | 26°56'48.35" | 80°04'58.11" |

U.S. Army Corps of Engineers  
 Jacksonville District, Jacksonville, Florida

WATER QUALITY CERTIFICATION APPLICATION  
 FOR MAINTENANCE DREDGING OF  
 THE INTRACOASTAL WATERWAY IN THE  
 VICINITY OF JUPITER INLET  
 WITH BEACH PLACEMENT

PLAN VIEW - CUT P-4 STA. 7+00 - 18+00

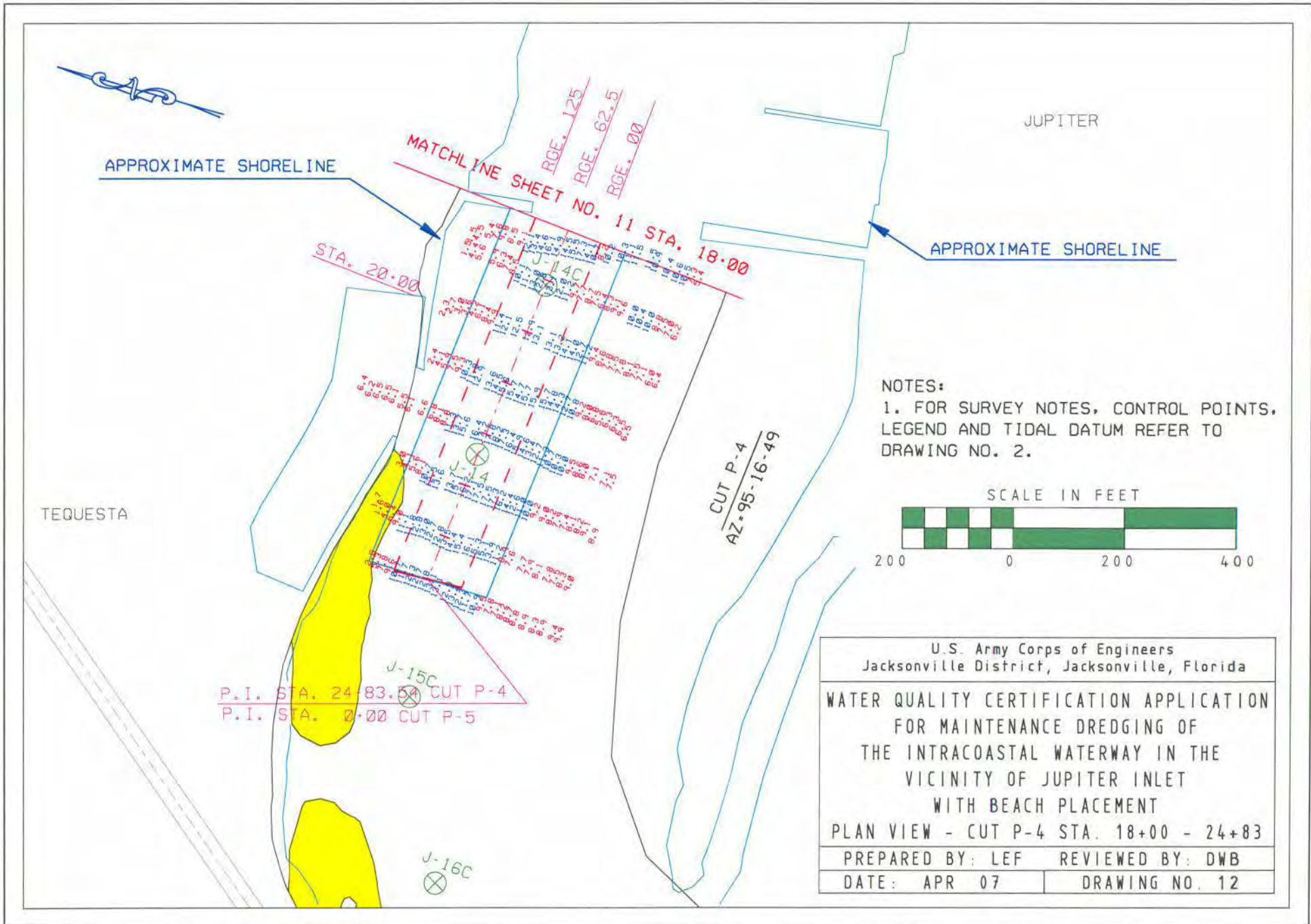
PREPARED BY: LEF      REVIEWED BY: DWB

DATE: APR 07      DRAWING NO. 11

PERMIT # 262913001



PERMIT # 262913001



APPROXIMATE SHORELINE

JUPITER

APPROXIMATE SHORELINE

MATCHLINE SHEET NO. 11 STA. 18+00

STA. 20+00

TEQUESTA

CUT P-4  
AZ-95-16-49

NOTES:  
 1. FOR SURVEY NOTES, CONTROL POINTS, LEGEND AND TIDAL DATUM REFER TO DRAWING NO. 2.



J-15C  
 P.I. STA. 24+83.50 CUT P-4  
 P.I. STA. 20+00 CUT P-5

J-16C

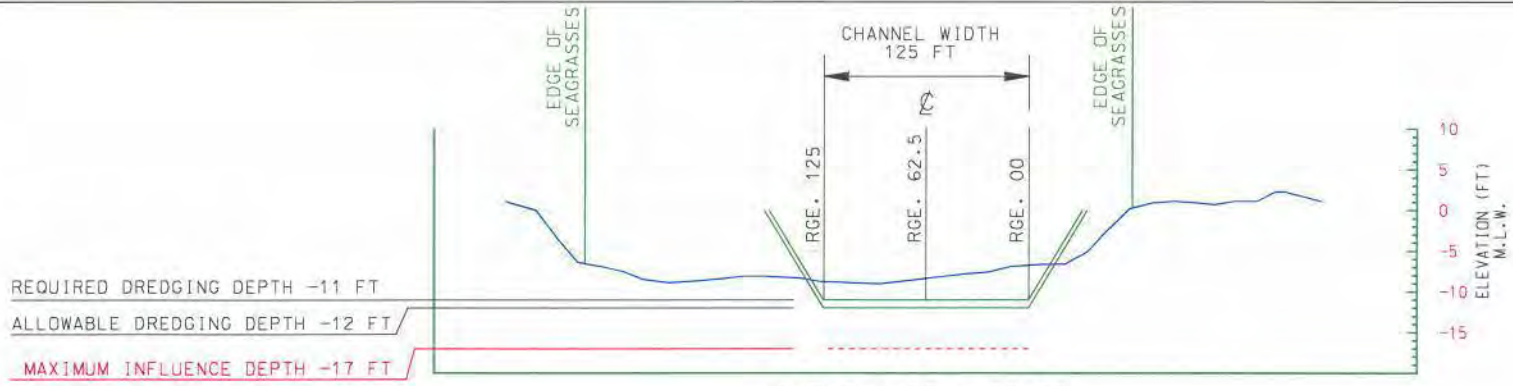
U.S. Army Corps of Engineers  
 Jacksonville District, Jacksonville, Florida

WATER QUALITY CERTIFICATION APPLICATION  
 FOR MAINTENANCE DREDGING OF  
 THE INTRACOASTAL WATERWAY IN THE  
 VICINITY OF JUPITER INLET  
 WITH BEACH PLACEMENT

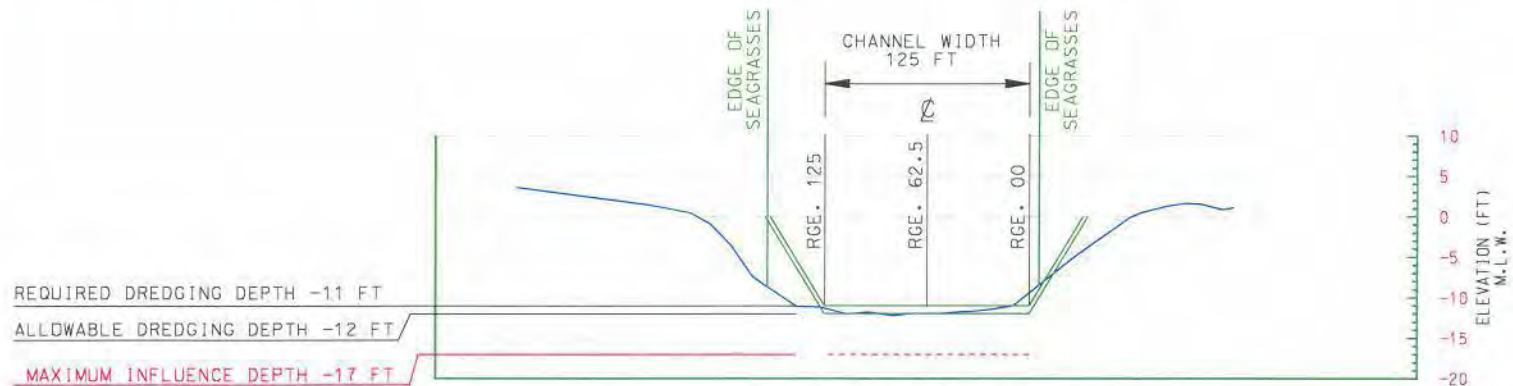
PLAN VIEW - CUT P-4 STA. 18+00 - 24+83

|                  |                  |
|------------------|------------------|
| PREPARED BY: LEF | REVIEWED BY: DWB |
| DATE: APR 07     | DRAWING NO. 12   |





CUT P-1 STA. 73+00



CUT P-2 STA. 6+00

NOTES:

1. THE MAXIMUM INFLUENCE DEPTH INDICATES THE MAXIMUM DEPTH DREDGING EQUIPMENT MAY DISTURB SEDIMENT DURING DREDGING OPERATIONS.

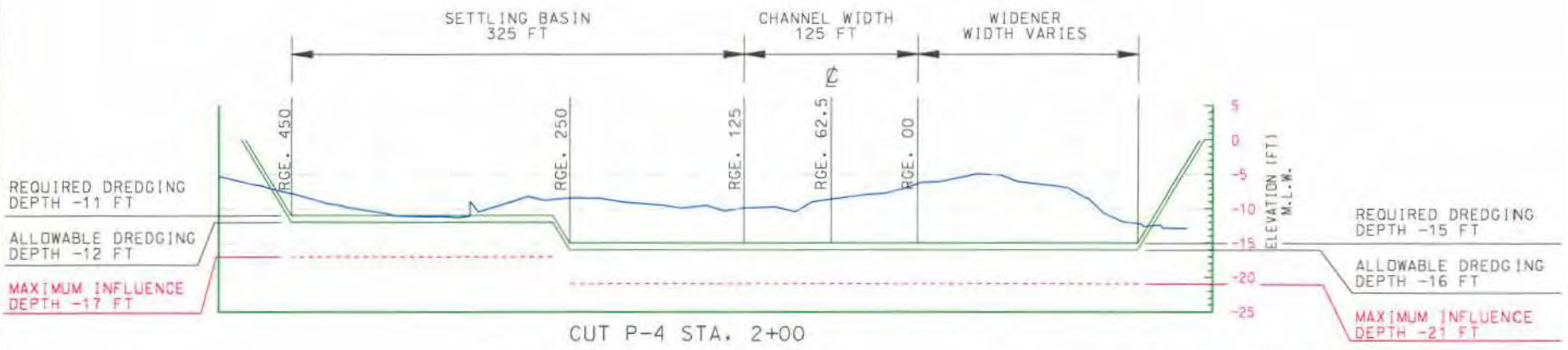
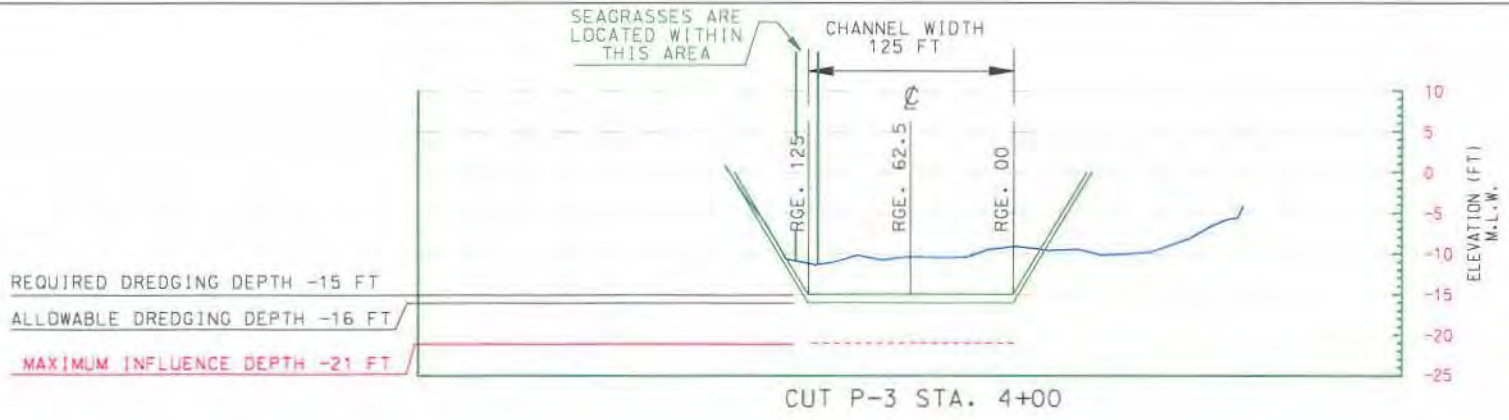
| AREA                          | REQUIRED DREDGING DEPTH (FT) | ALLOWABLE OVERDEPTH (FT) | MAXIMUM PAY DEPTH (FT) |
|-------------------------------|------------------------------|--------------------------|------------------------|
| CUT P-1                       | 11                           | 1                        | 12                     |
| CUT P-2                       | 11                           | 1                        | 12                     |
| CUT P-3                       | 15                           | 1                        | 16                     |
| CUT P-4                       | 15                           | 1                        | 16                     |
| SETTLING BASIN - RGE. 125-250 | 15                           | 1                        | 16                     |
| SETTLING BASIN - RGE. 250-450 | 11                           | 1                        | 12                     |

U.S. Army Corps of Engineers  
Jacksonville District, Jacksonville, Florida

WATER QUALITY CERTIFICATION APPLICATION  
FOR MAINTENANCE DREDGING OF  
THE INTRACOASTAL WATERWAY IN THE  
VICINITY OF JUPITER INLET  
WITH BEACH PLACEMENT  
TYPICAL SECTIONS - CUTS P-1 AND P-2  
PREPARED BY: LEF REVIEWED BY: DWB  
DATE: APR 07 DRAWING NO. 13

PERMIT # 262913001





NOTES:

1. THE MAXIMUM INFLUENCE DEPTH INDICATES THE MAXIMUM DEPTH DREDGING EQUIPMENT MAY DISTURB SEDIMENT DURING DREDGING OPERATIONS.

| AREA                          | REQUIRED DREDGING DEPTH (FT) | ALLOWABLE OVERDEPTH (FT) | MAXIMUM PAY DEPTH (FT) |
|-------------------------------|------------------------------|--------------------------|------------------------|
| CUT P-1                       | 11                           | 1                        | 12                     |
| CUT P-2                       | 11                           | 1                        | 12                     |
| CUT P-3                       | 15                           | 1                        | 16                     |
| CUT P-4                       | 15                           | 1                        | 16                     |
| SETTLING BASIN - RGE. 125-250 | 15                           | 1                        | 16                     |
| SETTLING BASIN - RGE. 250-450 | 11                           | 1                        | 12                     |

U.S. Army Corps of Engineers  
Jacksonville District, Jacksonville, Florida

**WATER QUALITY CERTIFICATION APPLICATION  
FOR MAINTENANCE DREDGING OF  
THE INTRACOASTAL WATERWAY IN THE  
VICINITY OF JUPITER INLET  
WITH BEACH PLACEMENT**

TYPICAL SECTIONS - CUTS P-3 AND P-4

PREPARED BY: LEF      REVIEWED BY: DWB

DATE: APR 07      DRAWING NO. 14





| DEP CONTROL MONUMENTS |            |            |       |
|-----------------------|------------|------------|-------|
| MONUMENT              | X          | Y          | ELEV. |
| R-13                  | 958518.295 | 949339.975 | 12.13 |
| R-14                  | 958738.975 | 948470.950 | 6.46  |
| R-15                  | 959031.835 | 947799.881 | 17.92 |
| R-16                  | 959273.330 | 946977.523 | 20.27 |
| R-17                  | 959447.255 | 946198.450 | 19.05 |
| T-18                  | 959626.111 | 945280.869 | 14.73 |
| T-19                  | 959812.074 | 943958.484 | 15.90 |

**NOTES:**

1. THE BEACH SURVEY WAS DONE BY PALM BEACH COUNTY IN 2006.
2. STATE PLANE COORDINATES SHOWN HEREON ARE IN FEET AND RELATIVE TO NAD 83/90.
3. ELEVATIONS SHOWN HEREON ARE BASED ON NAVD 88.
4. THE HARDBOTTOM SURVEY WAS DONE BY PALM BEACH COUNTY IN 2004.

**LEGEND**

- ⊗ GRAB SAMPLE LOCATION
- DEP CONTROL MONUMENT
- EROSION CONTROL LINE
- ▭ BEACH FILL
- NEARSHORE REEF
- ARTIFICIAL REEF



U.S. Army Corps of Engineers  
Jacksonville District, Jacksonville, Florida

WATER QUALITY CERTIFICATION APPLICATION  
FOR MAINTENANCE DREDGING OF  
THE INTRACOASTAL WATERWAY IN THE  
VICINITY OF JUPITER INLET  
WITH BEACH PLACEMENT  
VICINITY OF BEACH PLACEMENT

PREPARED BY: LEF      REVIEWED BY: DWB  
DATE: APR 07      DRAWING NO. 15

PERMIT # 262913001





NOTES:

1. FOR SURVEY NOTES, CONTROL POINTS, AND LEGEND REFER TO DRAWING NO. 15.



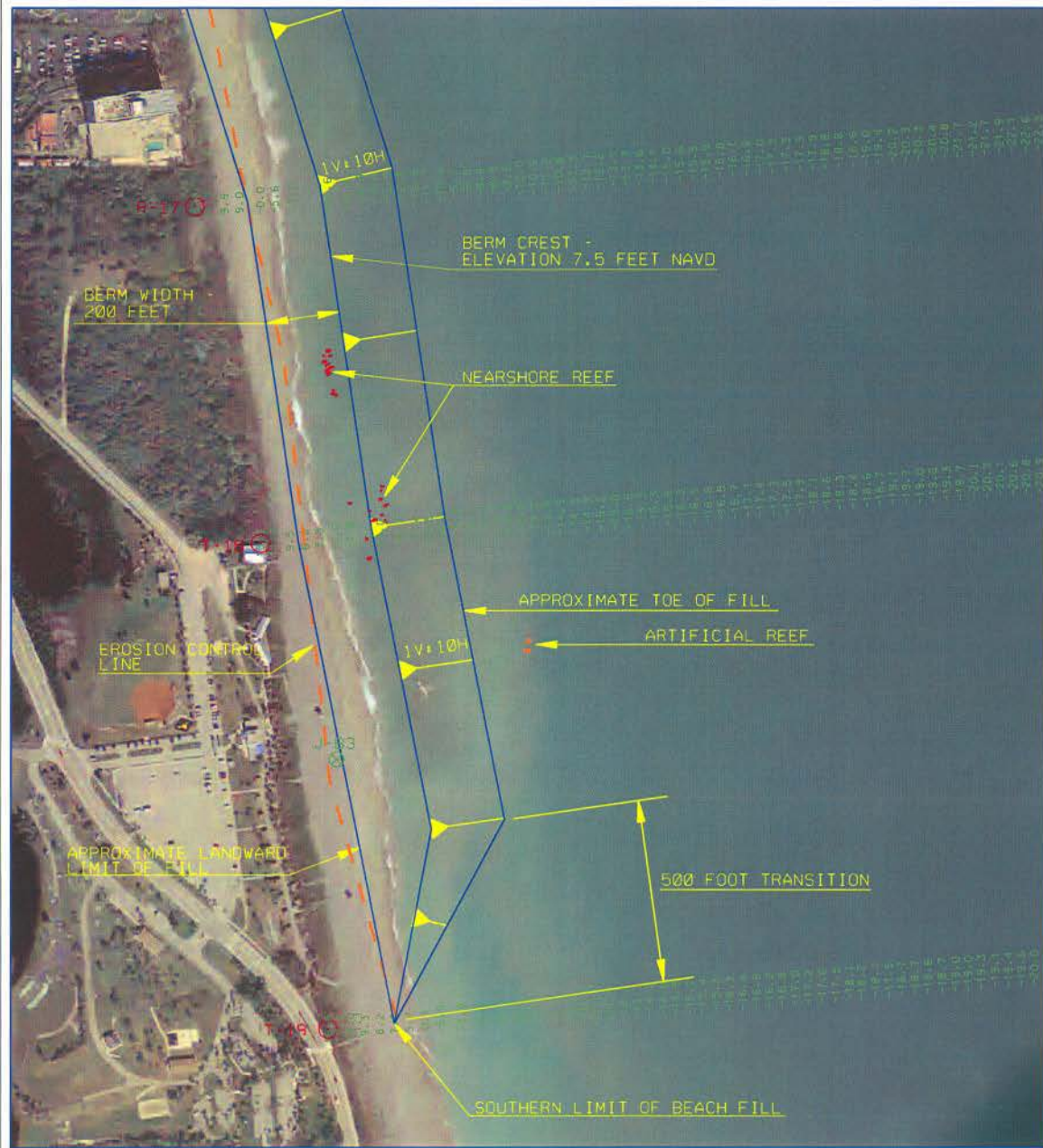
U.S. Army Corps of Engineers  
Jacksonville District, Jacksonville, Florida

WATER QUALITY CERTIFICATION APPLICATION  
FOR MAINTENANCE DREDGING OF  
THE INTRACOASTAL WATERWAY IN THE  
VICINITY OF JUPITER INLET  
WITH BEACH PLACEMENT  
PLAN VIEW-JUPITER BEACH PLACEMENT AREA

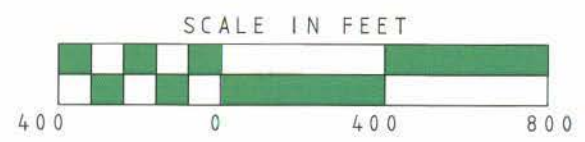
PREPARED BY: LEF      REVIEWED BY: DWB

DATE: APR 07      DRAWING NO. 16





NOTES:  
 1. FOR SURVEY NOTES, CONTROL POINTS,  
 AND LEGEND REFER TO DRAWING NO. 15.

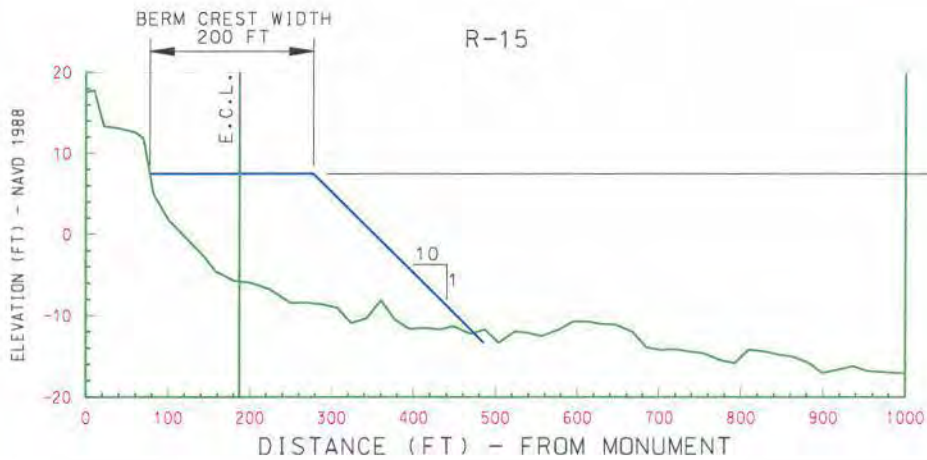
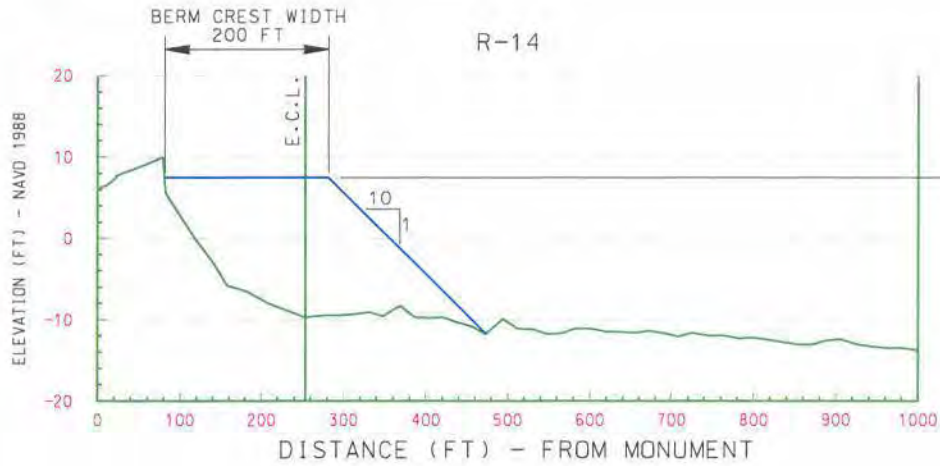


U.S. Army Corps of Engineers  
 Jacksonville District, Jacksonville, Florida

WATER QUALITY CERTIFICATION APPLICATION  
 FOR MAINTENANCE DREDGING OF  
 THE INTRACOASTAL WATERWAY IN THE  
 VICINITY OF JUPITER INLET  
 WITH BEACH PLACEMENT  
 PLAN VIEW-JUPITER BEACH PLACEMENT AREA

|                  |                  |
|------------------|------------------|
| PREPARED BY: LEF | REVIEWED BY: DWB |
| DATE: APR 07     | DRAWING NO. 17   |

PERMIT # 262913001



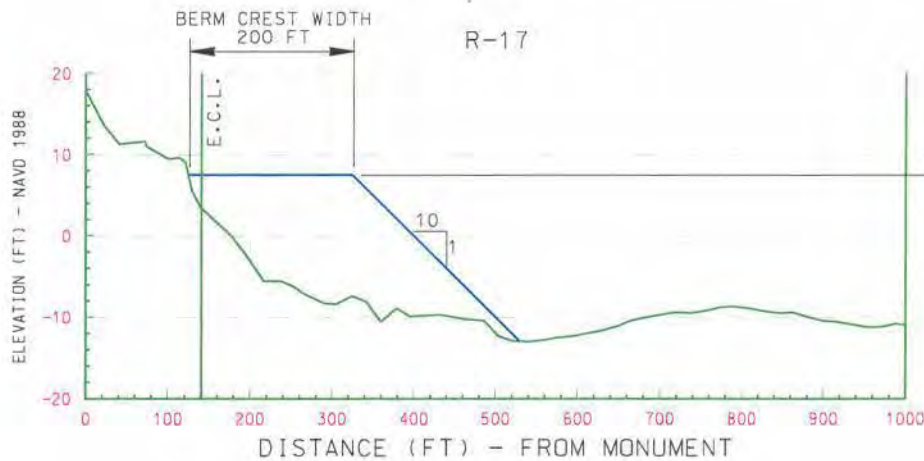
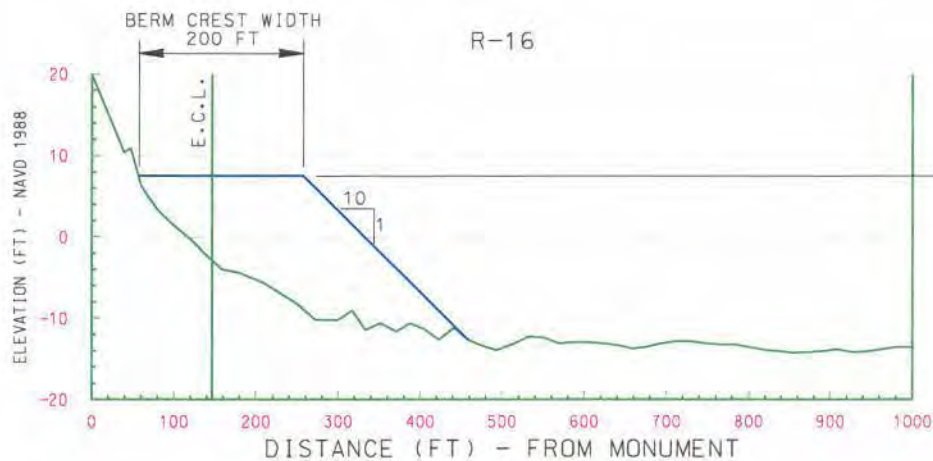
U.S. Army Corps of Engineers  
 Jacksonville District, Jacksonville, Florida

WATER QUALITY CERTIFICATION APPLICATION  
 FOR MAINTENANCE DREDGING OF  
 THE INTRACOASTAL WATERWAY IN THE  
 VICINITY OF JUPITER INLET  
 WITH BEACH PLACEMENT

TYPICAL BEACH SECTIONS - R-14 AND R-15

PREPARED BY: LEF      REVIEWED BY: DWB  
 DATE: APR 07      DRAWING NO. 18

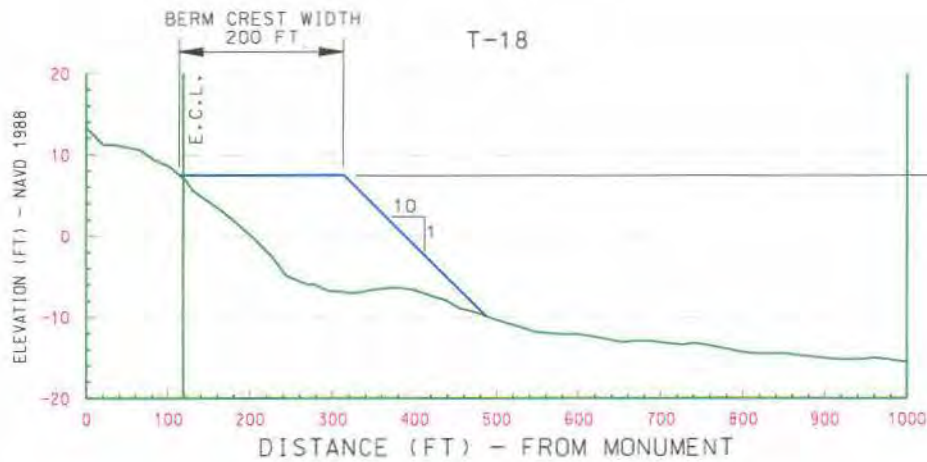




U.S. Army Corps of Engineers  
Jacksonville District, Jacksonville, Florida

WATER QUALITY CERTIFICATION APPLICATION  
FOR MAINTENANCE DREDGING OF  
THE INTRACOASTAL WATERWAY IN THE  
VICINITY OF JUPITER INLET  
WITH BEACH PLACEMENT  
TYPICAL BEACH SECTIONS - R-16 AND R-17

PREPARED BY: LEF      REVIEWED BY: DWB  
DATE: APR 07      DRAWING NO. 19



U.S. Army Corps of Engineers  
Jacksonville District, Jacksonville, Florida

WATER QUALITY CERTIFICATION APPLICATION  
FOR MAINTENANCE DREDGING OF  
THE INTRACOASTAL WATERWAY IN THE  
VICINITY OF JUPITER INLET  
WITH BEACH PLACEMENT  
TYPICAL BEACH SECTIONS - T-18

PREPARED BY: LEF    REVIEWED BY: DWB  
DATE: APR 07    DRAWING NO. 20

PERMIT # 262913001