

DRAWING INDEX:

- SHEET 1 LOCATION MAP
- SHEET 2 CHANNEL PLAN VIEW
- SHEET 3 CHANNEL PLAN VIEW
- SHEET 4 CONTROL DATA
- SHEET 5 CROSS-SECTION
- SHEET 6 S. BEACH PLACEMENT AREA

APPLICANT: U.S. ARMY CORPS OF ENGINEERS

PROJECT: MAINTENANCE DREDGING, 8' & 18' PROJECT
INTRACOASTAL WATERWAY & BAKERS HAULOVER

DATE: REVISED - DEC 04 SHEET 1 OF 6

DRAWINGS TO ACCOMPANY THE
APPLICATION FOR WATER QUALITY
CERTIFICATE SUBMITTED TO THE
FLORIDA DEPARTMENT OF
ENVIRONMENTAL PROTECTION

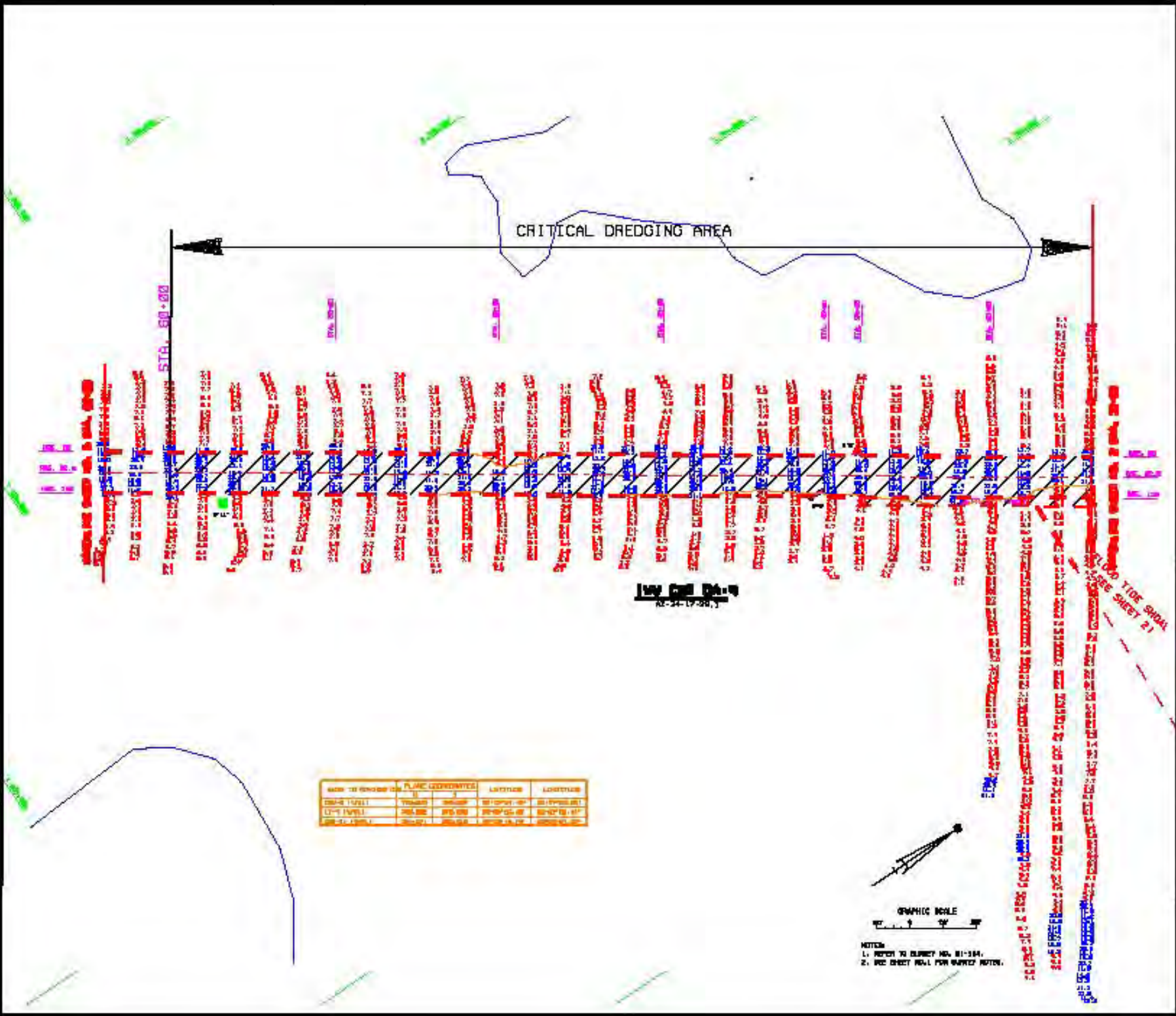




DRAWINGS TO ACCOMPANY THE APPLICATION FOR WATER QUALITY CERTIFICATE SUBMITTED TO THE FLORIDA DEPARTMENT OF ENVIRONMENTAL PROTECTION



APPLICANT: U.S. ARMY CORPS OF ENGINEERS
 PROJECT: MAINTENANCE DREDGING, 8' & 10' PROJECT
 INTRACOASTAL WATERWAY & BAKERS HAULOVER
 DATE: REVISED - DEC 04 SHEET 2 OF 6

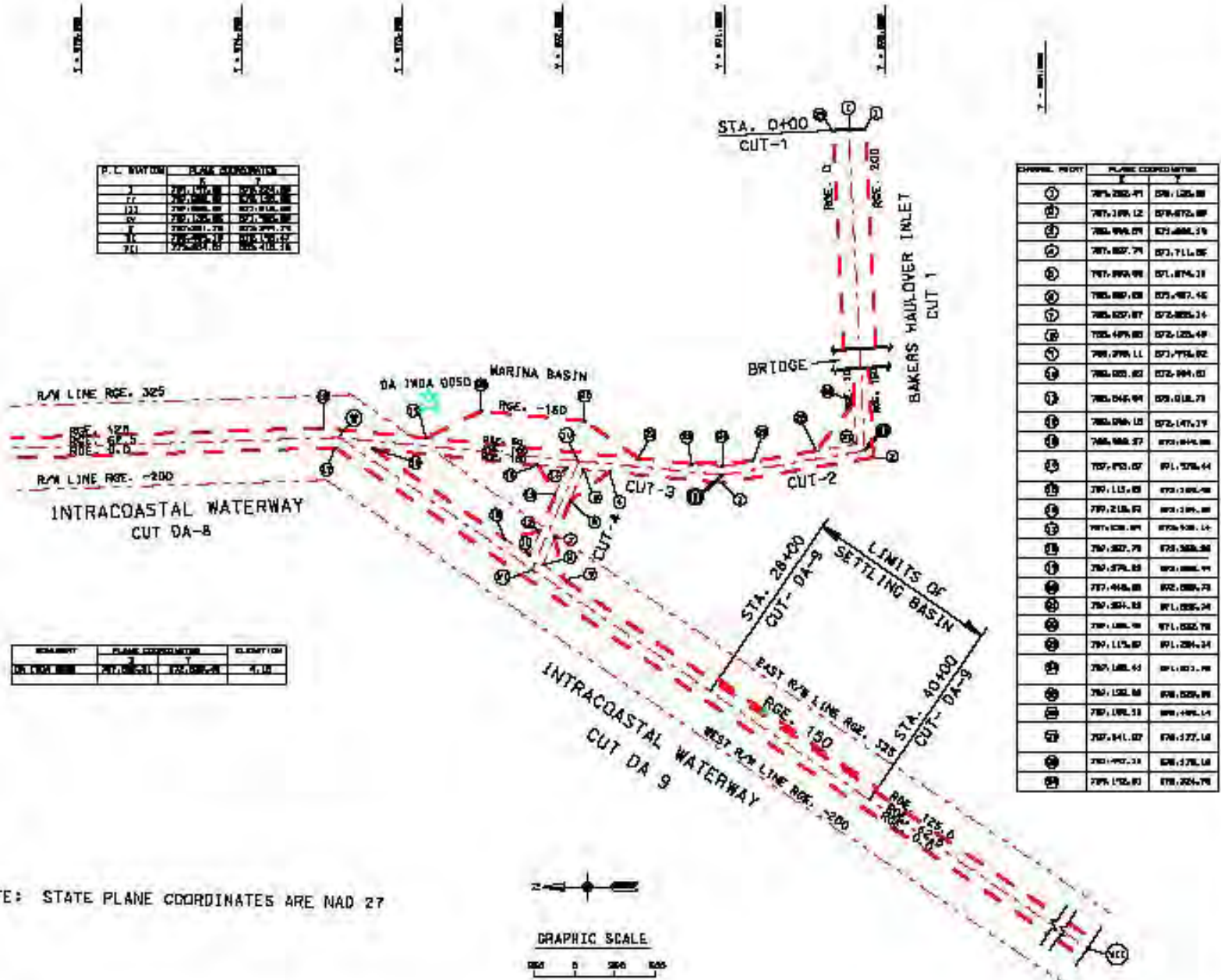


APPLICANT: U.S. ARMY CORPS OF ENGINEERS
 PROJECT: MAINTENANCE DREDGING, 8' & 10' PROJECT
 INTRACOASTAL WATERWAY & BAKERS HAULOVER
 DATE: REVISED - DEC 04 SHEET 3 OF 6

DRAWINGS TO ACCOMPANY THE
 APPLICATION FOR WATER QUALITY
 CERTIFICATE SUBMITTED TO THE
 FLORIDA DEPARTMENT OF
 ENVIRONMENTAL PROTECTION



2 - 200.000
2 - 200.000
2 - 200.000
2 - 200.000
2 - 200.000
2 - 200.000

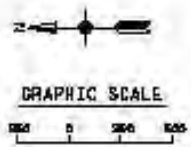


P.L. STATION	PLAN COORDINATE	ELEVATION
1	787,100.00	871,100.00
2	787,100.00	871,100.00
3	787,100.00	871,100.00
4	787,100.00	871,100.00
5	787,100.00	871,100.00
6	787,100.00	871,100.00
7	787,100.00	871,100.00
8	787,100.00	871,100.00
9	787,100.00	871,100.00
10	787,100.00	871,100.00

STATION	PLAN COORDINATE	ELEVATION
1	787,100.00	871,100.00
2	787,100.00	871,100.00
3	787,100.00	871,100.00
4	787,100.00	871,100.00
5	787,100.00	871,100.00
6	787,100.00	871,100.00
7	787,100.00	871,100.00
8	787,100.00	871,100.00
9	787,100.00	871,100.00
10	787,100.00	871,100.00

CHANNEL	POINT	PLANE COORDINATE	ELEVATION
1	1	787,100.00	871,100.00
1	2	787,100.00	871,100.00
1	3	787,100.00	871,100.00
1	4	787,100.00	871,100.00
1	5	787,100.00	871,100.00
1	6	787,100.00	871,100.00
1	7	787,100.00	871,100.00
1	8	787,100.00	871,100.00
1	9	787,100.00	871,100.00
1	10	787,100.00	871,100.00
1	11	787,100.00	871,100.00
1	12	787,100.00	871,100.00
1	13	787,100.00	871,100.00
1	14	787,100.00	871,100.00
1	15	787,100.00	871,100.00
1	16	787,100.00	871,100.00
1	17	787,100.00	871,100.00
1	18	787,100.00	871,100.00
1	19	787,100.00	871,100.00
1	20	787,100.00	871,100.00
1	21	787,100.00	871,100.00
1	22	787,100.00	871,100.00
1	23	787,100.00	871,100.00
1	24	787,100.00	871,100.00
1	25	787,100.00	871,100.00
1	26	787,100.00	871,100.00
1	27	787,100.00	871,100.00
1	28	787,100.00	871,100.00
1	29	787,100.00	871,100.00
1	30	787,100.00	871,100.00
1	31	787,100.00	871,100.00
1	32	787,100.00	871,100.00
1	33	787,100.00	871,100.00
1	34	787,100.00	871,100.00
1	35	787,100.00	871,100.00
1	36	787,100.00	871,100.00
1	37	787,100.00	871,100.00
1	38	787,100.00	871,100.00
1	39	787,100.00	871,100.00
1	40	787,100.00	871,100.00
1	41	787,100.00	871,100.00
1	42	787,100.00	871,100.00
1	43	787,100.00	871,100.00
1	44	787,100.00	871,100.00
1	45	787,100.00	871,100.00
1	46	787,100.00	871,100.00
1	47	787,100.00	871,100.00
1	48	787,100.00	871,100.00
1	49	787,100.00	871,100.00
1	50	787,100.00	871,100.00
1	51	787,100.00	871,100.00
1	52	787,100.00	871,100.00
1	53	787,100.00	871,100.00
1	54	787,100.00	871,100.00
1	55	787,100.00	871,100.00
1	56	787,100.00	871,100.00
1	57	787,100.00	871,100.00
1	58	787,100.00	871,100.00
1	59	787,100.00	871,100.00
1	60	787,100.00	871,100.00
1	61	787,100.00	871,100.00
1	62	787,100.00	871,100.00
1	63	787,100.00	871,100.00
1	64	787,100.00	871,100.00
1	65	787,100.00	871,100.00
1	66	787,100.00	871,100.00
1	67	787,100.00	871,100.00
1	68	787,100.00	871,100.00
1	69	787,100.00	871,100.00
1	70	787,100.00	871,100.00
1	71	787,100.00	871,100.00
1	72	787,100.00	871,100.00
1	73	787,100.00	871,100.00
1	74	787,100.00	871,100.00
1	75	787,100.00	871,100.00
1	76	787,100.00	871,100.00
1	77	787,100.00	871,100.00
1	78	787,100.00	871,100.00
1	79	787,100.00	871,100.00
1	80	787,100.00	871,100.00
1	81	787,100.00	871,100.00
1	82	787,100.00	871,100.00
1	83	787,100.00	871,100.00
1	84	787,100.00	871,100.00
1	85	787,100.00	871,100.00
1	86	787,100.00	871,100.00
1	87	787,100.00	871,100.00
1	88	787,100.00	871,100.00
1	89	787,100.00	871,100.00
1	90	787,100.00	871,100.00
1	91	787,100.00	871,100.00
1	92	787,100.00	871,100.00
1	93	787,100.00	871,100.00
1	94	787,100.00	871,100.00
1	95	787,100.00	871,100.00
1	96	787,100.00	871,100.00
1	97	787,100.00	871,100.00
1	98	787,100.00	871,100.00
1	99	787,100.00	871,100.00
1	100	787,100.00	871,100.00

NOTE: STATE PLANE COORDINATES ARE NAD 27

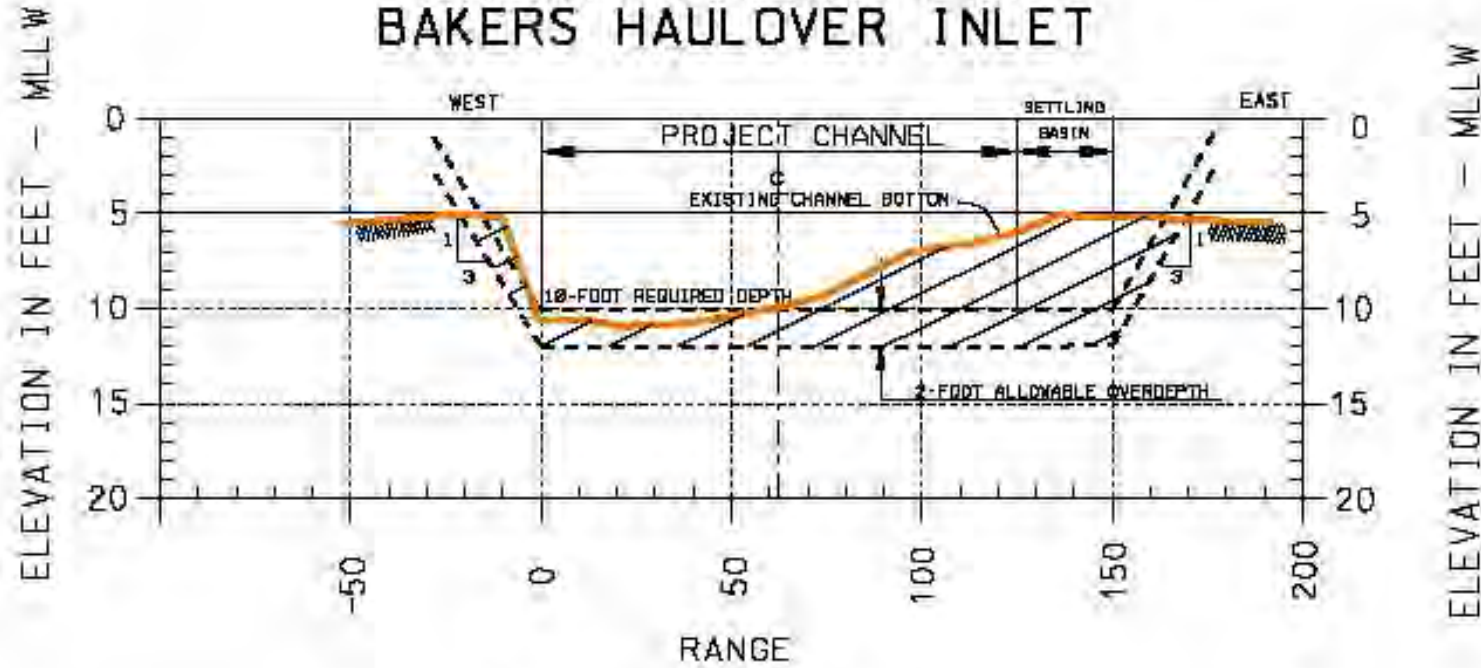


APPLICANT: U.S. ARMY CORPS OF ENGINEERS
 PROJECT: MAINTENANCE DREDGING, 8' & 10' PROJECT
 INTRACOASTAL WATERWAY & BAKERS HAALOVER
 DATE: REVISED - DEC 04 SHEET 4 OF 6

DRAWINGS TO ACCOMPANY THE
 APPLICATION FOR WATER QUALITY
 CERTIFICATION SUBMITTED TO THE
 FLORIDA DEPARTMENT OF
 ENVIRONMENTAL PROTECTION



INTRACOASTAL WATERWAY IN THE VICINITY OF BAKERS HAULOVER INLET



TYPICAL CROSS-SECTION
CUT DA-9, STATION 28+00

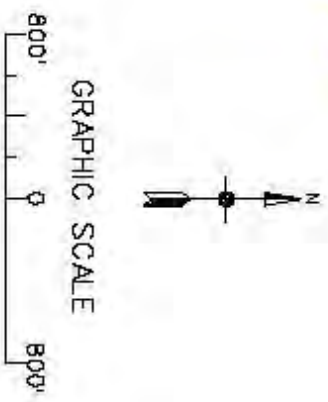
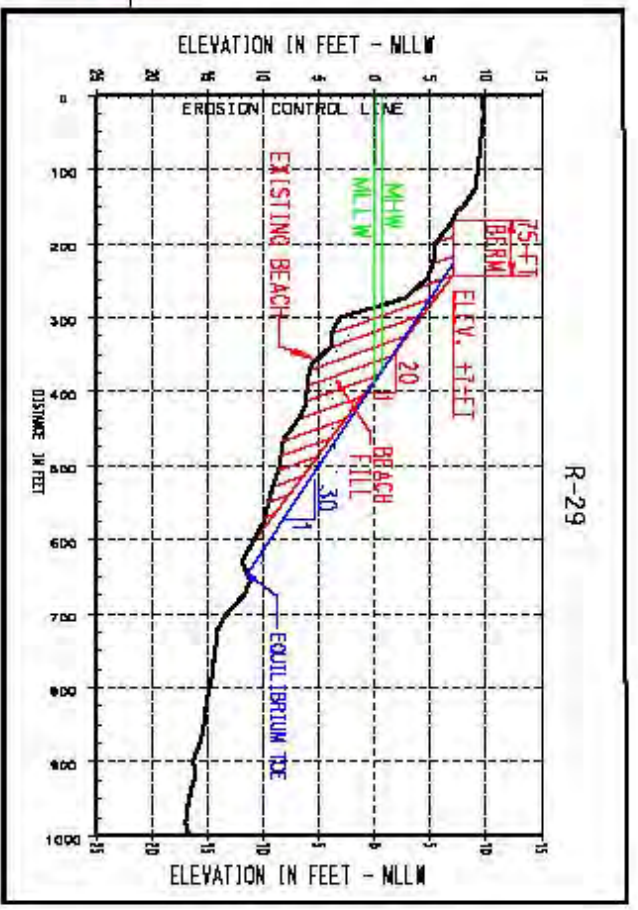
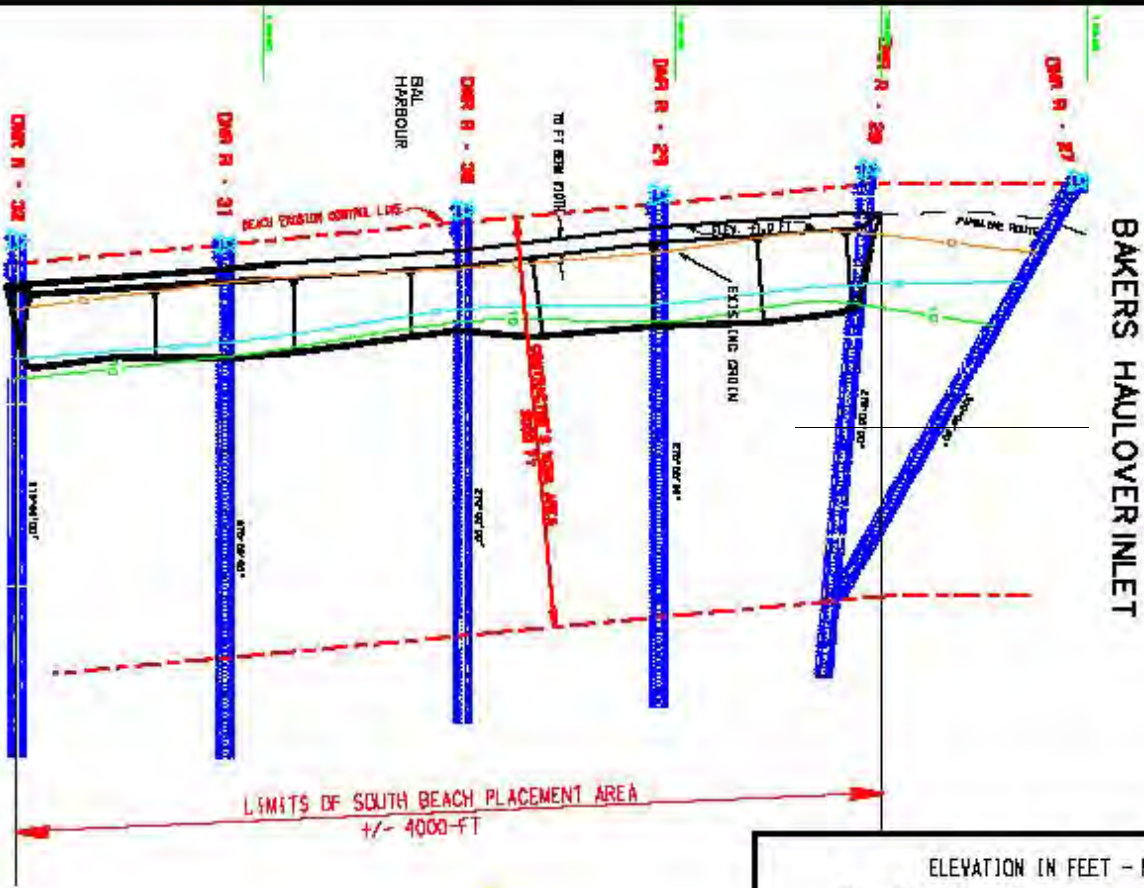
DRAWINGS TO ACCOMPANY THE
APPLICATION FOR WATER QUALITY
CERTIFICATE SUBMITTED TO THE
FLORIDA DEPARTMENT OF
ENVIRONMENTAL PROTECTION

APPLICANT: U.S. ARMY CORPS OF ENGINEERS

PROJECT: MAINTENANCE DREDDING, 8' & 10' PROJECT
INTRACOASTAL WATERWAY & BAKERS HAULOVER

DATE: REVISED - DEC 84 SHEET 5 OF 6





DRAWINGS TO ACCOMPANY THE APPLICATION FOR WATER QUALITY CERTIFICATE SUBMITTED TO THE FLORIDA DEPARTMENT OF ENVIRONMENTAL PROTECTION

APPLICANT: U.S. ARMY CORPS OF ENGINEERS
 PROJECT: MAINTENANCE DREDGING, 8' & 10' PROJECT INTRACOASTAL WATERWAY & BAKERS HAULOVER
 DATE: REVISED - JUNE 2003 SHEET 6 OF 6