

DESIGN AUTHENTICATION

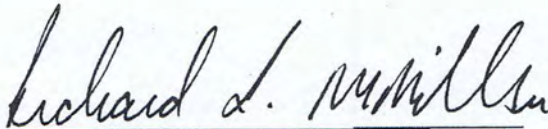
PROJECT: Maintenance Dredging, Atlantic Intracoastal Waterway (AIWW), Vicinity of Sawpit Creek, Duval and Nassau Counties, FL

ATTACHED PLAN SHEETS: 20 Sheets

The attached plan sheets were prepared by the Jacksonville District, U.S. Army Corps of Engineers (USACE). The initials or signatures and registrations designations of the signatory below or that appear on these project documents are within the scope of employment as required by USACE Engineering Regulation 1110-1-8152, PROFESSIONAL REGISTRATION, 8 Aug 1995, and are not made in the individual capacity of the signatories.

USACE employee signatures are provided in support of the "Interagency Coordination Agreement for Civil Works Projects", signed 28 Feb 2006 by the Florida Department of Environmental Protection, the USACE Jacksonville District, and USACE Mobile District.

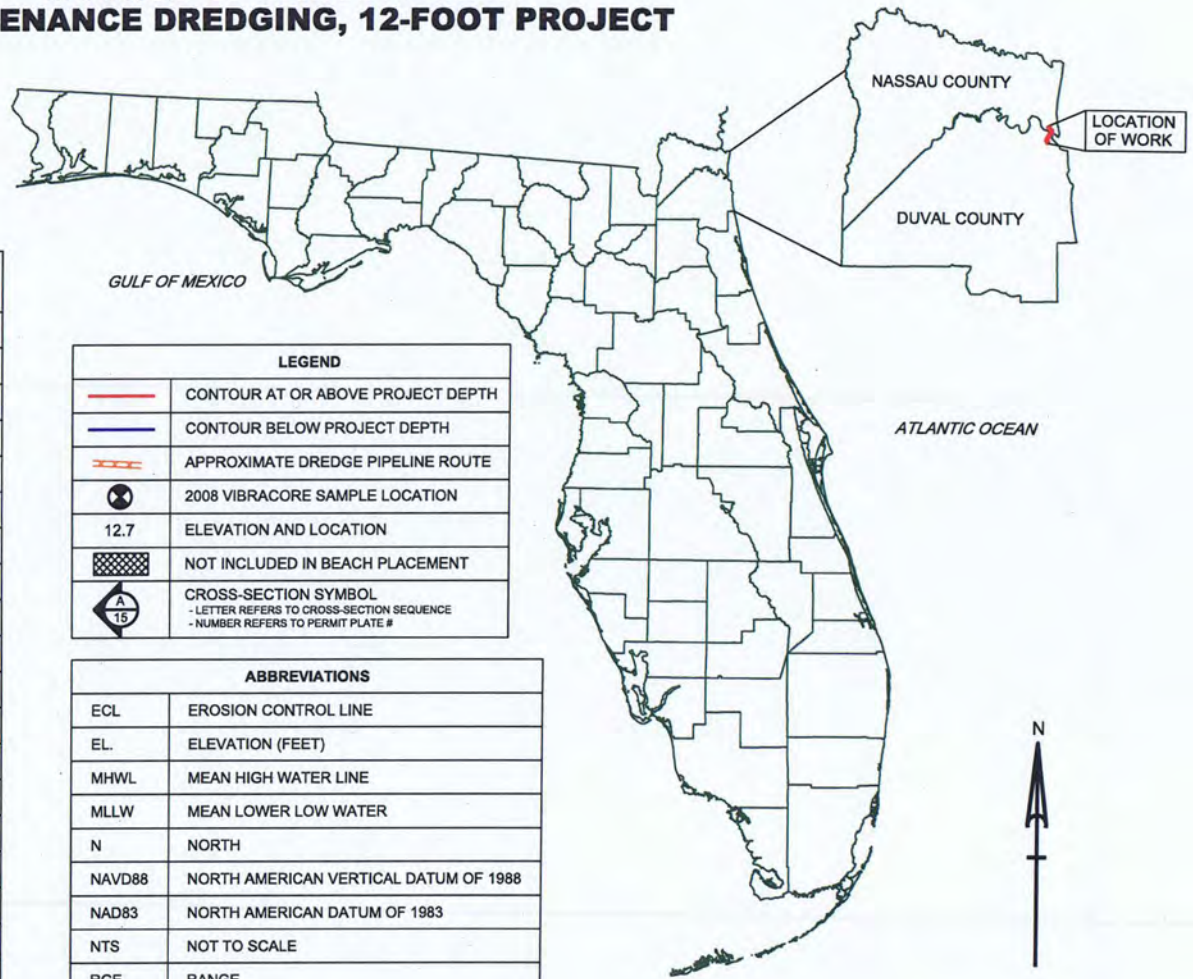
These plans are for permitting purposes only, and are not for construction.



Richard I. McMillen P.E. # 023351
Chief, Navigation Branch
Operations Division

10/28/11
DATE

ATLANTIC INTRACOASTAL WATERWAY DUVAL AND NASSAU COUNTIES, FLORIDA VICINITY OF SAWPIT CREEK MAINTENANCE DREDGING, 12-FOOT PROJECT



INDEX TO PLATES	
1	INDEX TO PLATES, LEGEND, AND ABBREVIATIONS
2	PLATE LAYOUT AND SURVEY NOTES
3	PLAN VIEW: CUT-24 STA. 0+00 TO CUT-24 STA. 11+00
4	PLAN VIEW: CUT-24 STA. 11+00 TO CUT-25 STA. 8+00
5	PLAN VIEW: CUT-25 STA. 8+00 TO CUT-27 STA. 3+00
6	PLAN VIEW: CUT-27 STA. 3+00 TO CUT-27 STA. 20+00
7	PLAN VIEW: CUT-27 STA. 20+00 TO CUT-27 STA. 37+00
8	PLAN VIEW: CUT-27 STA. 37+00 TO CUT-27 STA. 54+00
9	PLAN VIEW: CUT-27 STA. 54+00 TO CUT-27A STA. 0+00
10	PLAN VIEW: CUT-27A STA. 0+00 TO CUT-27B STA. 21+00
11	PLAN VIEW: CUT-27B STA. 21+00 TO CUT-27B STA. 32+00
12	PLAN VIEW: CUT-27B STA. 32+00 TO CUT-27C STA. 10+00
13	PLAN VIEW: CUT-27C STA. 10+00 TO CUT-27D STA. 0+00
14	BEACH PLACEMENT
15	CROSS SECTIONS: CUT-24 STA. 10+00 AND CUT-25 STA. 5+00
16	CROSS SECTIONS: CUT-26 STA. 1+00 AND CUT-26A STA. 3+00
17	CROSS SECTIONS: CUT-27 STA. 5+00 AND CUT-27 STA. 35+00
18	CROSS SECTIONS: CUT-27 STA. 65+00 AND CUT-27A STA. 15+00
19	CROSS SECTIONS: CUT-27B STA. 20+00 AND CUT-27B STA. 25+00
20	CROSS SECTIONS: CUT-27B STA. 33+00 AND CUT-27C STA. 15+00

LEGEND	
	CONTOUR AT OR ABOVE PROJECT DEPTH
	CONTOUR BELOW PROJECT DEPTH
	APPROXIMATE DREDGE PIPELINE ROUTE
	2008 VIBRACORE SAMPLE LOCATION
12.7	ELEVATION AND LOCATION
	NOT INCLUDED IN BEACH PLACEMENT
	CROSS-SECTION SYMBOL - LETTER REFERS TO CROSS-SECTION SEQUENCE - NUMBER REFERS TO PERMIT PLATE #

ABBREVIATIONS	
ECL	EROSION CONTROL LINE
EL	ELEVATION (FEET)
MHWL	MEAN HIGH WATER LINE
MLLW	MEAN LOWER LOW WATER
N	NORTH
NAVD88	NORTH AMERICAN VERTICAL DATUM OF 1988
NAD83	NORTH AMERICAN DATUM OF 1983
NTS	NOT TO SCALE
RGE.	RANGE
STA.	STATION



WQC PLATES
NOT FOR CONSTRUCTION

DEPARTMENT OF THE ARMY
JACKSONVILLE DISTRICT, CORPS OF ENGINEERS
JACKSONVILLE, FLORIDA

FILE NAME: SawpitFY11-WQCSh01.dgn	DWN BY: BTM
DATED: OCT 2011	DSN BY: SR
SCALE: AS SHOWN	CKD BY: CKM

GENERAL NOTES:

ATLANTIC INTRACOASTAL WATERWAY
DUVAL AND NASSAU COUNTIES, FLORIDA
**MAINTENANCE DREDGING
VICINITY OF SAWPIT CREEK**
**PROJECT COVER SHEET,
LEGEND, AND INDEX**

PLATE:

1



= AREA TO BE DREDGED (MATERIAL TO BE PLACED ON THE BEACH)

SURVEY TABULATION			
VESSEL	AREA SURVEYED	DATE SURVEYED	BENCHMARK
WB-32	CUTS 7 THRU 9	28 JAN 10	STARK
WB-32	CUT 27A THRU 27C	29 JAN 10	N 326
WB-32	CUT 22 THRU 27	01 FEB 10	N 326
WB-32	CUT 10 THRU 21	02 FEB 10	N 326, STARK

LEGEND	
* BM	BENCHMARK
	LIGHTED BEACON
	GREEN DAY BEACON
	RED DAY BEACON
	RED LIGHTED BUOY
	GREEN LIGHTED BUOY
	CAN BUOY
	NUN BUOY
	TIDE STAFF

BENCHMARK	NAVD ELEV. (FT)
STARK	8.47
8720137D TIDAL	17.15
8720816A TIDAL	8.22
N 326	12.48

CHANNEL SURVEY NOTES:

- REFER TO SURVEY NO. 10-038.
- ELEVATIONS ARE IN FEET AND TENTHS AND REFER TO NOAA'S REPORTED MEAN LOWER LOW WATER (MLLW) OF THE 1983-2001 TIDAL EPOCH.
- ALL ELEVATIONS ARE BELOW THE CHART DATUM UNLESS PRECEDED BY A (+) SIGN.
- TIDAL REDUCTIONS WERE MADE OBTAINED UTILIZING REAL-TIME KINEMATIC TIDE DATUM MODEL.
- PLANE COORDINATES ARE BASED ON THE TRANSVERSE MERCATOR PROJECTION FOR THE EAST ZONE OF FLORIDA AND REFERENCED TO NORTH AMERICAN DATUM OF 1983 (NAD83).
- ALL AZIMUTHS ARE GRID; RECKONED CLOCKWISE FROM SOUTH.
- ALL STATIONING REFERS TO THE CENTERLINE OF THE CHANNEL.
- SURVEY WAS PERFORMED USING REAL-TIME KINEMATIC GPS POSITIONING WITH THE FOLLOWING REFERENCE BASE LOCATIONS:

REFERENCE BASE LOCATED AT "N 326" FOR CUTS 19 THRU 27C

NORTHING: 2,250,114.10'
EASTING: 515,903.16'
NAVD88 ELEVATION: 12.48'

REFERENCE BASE LOCATED AT "872 0137 D TIDAL"

NORTHING: 2,248,616' SCALED
EASTING: 512,105' SCALED
NAVD88 ELEVATION: 17.15'
MLLW ELEVATION: 20.37'

REFERENCE BASE LOCATED AT "872 0816 A TIDAL"

NORTHING: 2,220,425' SCALED
EASTING: 517,847' SCALED
NAVD88 ELEVATION: 8.22'
MLLW ELEVATION: 11.20'

VERTICAL MEASUREMENTS WERE MADE USING A ROSS SMARTSOUNDER DUAL FREQUENCY 28/200KHZ SINGLE-BEAM TRANSDUCER. SOUNDINGS SHOWN IN THIS SURVEY ARE REPORTED IN HIGH FREQUENCY (200KHZ).

9. AIDS TO NAVIGATION WERE LOCATED DURING THIS SURVEY.

10. THE INFORMATION DEPICTED ON THIS MAP REPRESENTS THE RESULTS OF SURVEYS MADE ON THE DATES INDICATED ABOVE AND CAN ONLY BE CONSIDERED AS INDICATING THE GENERAL CONDITIONS AT THAT TIME. THIS CHART IS SOLELY FOR THE DISTRIBUTION OF AVAILABLE DEPTHS AT THE TIME OF THE SURVEY AND IS NOT TO BE USED FOR NAVIGATION.

11. SURVEY ACCURACY PERFORMANCE STANDARDS, QUALITY CONTROL, AND QUALITY ASSURANCE REQUIREMENTS WERE FOLLOWED DURING THIS SURVEY IN ACCORDANCE WITH USACE EM 1110-2-1003, HYDROGRAPHIC SURVEYING, 1 JAN 02.



US Army Corps of Engineers
Jacksonville District

WQC PLATES
NOT FOR CONSTRUCTION

DEPARTMENT OF THE ARMY
JACKSONVILLE DISTRICT, CORPS OF ENGINEERS
JACKSONVILLE, FLORIDA

FILE NAME:
SawpitFY11-WQCSh02.dgn
DATED:
OCT 2011
SCALE:
AS SHOWN

DWN BY:
BTM
DSM BY:
S R
CKD BY:
CKM

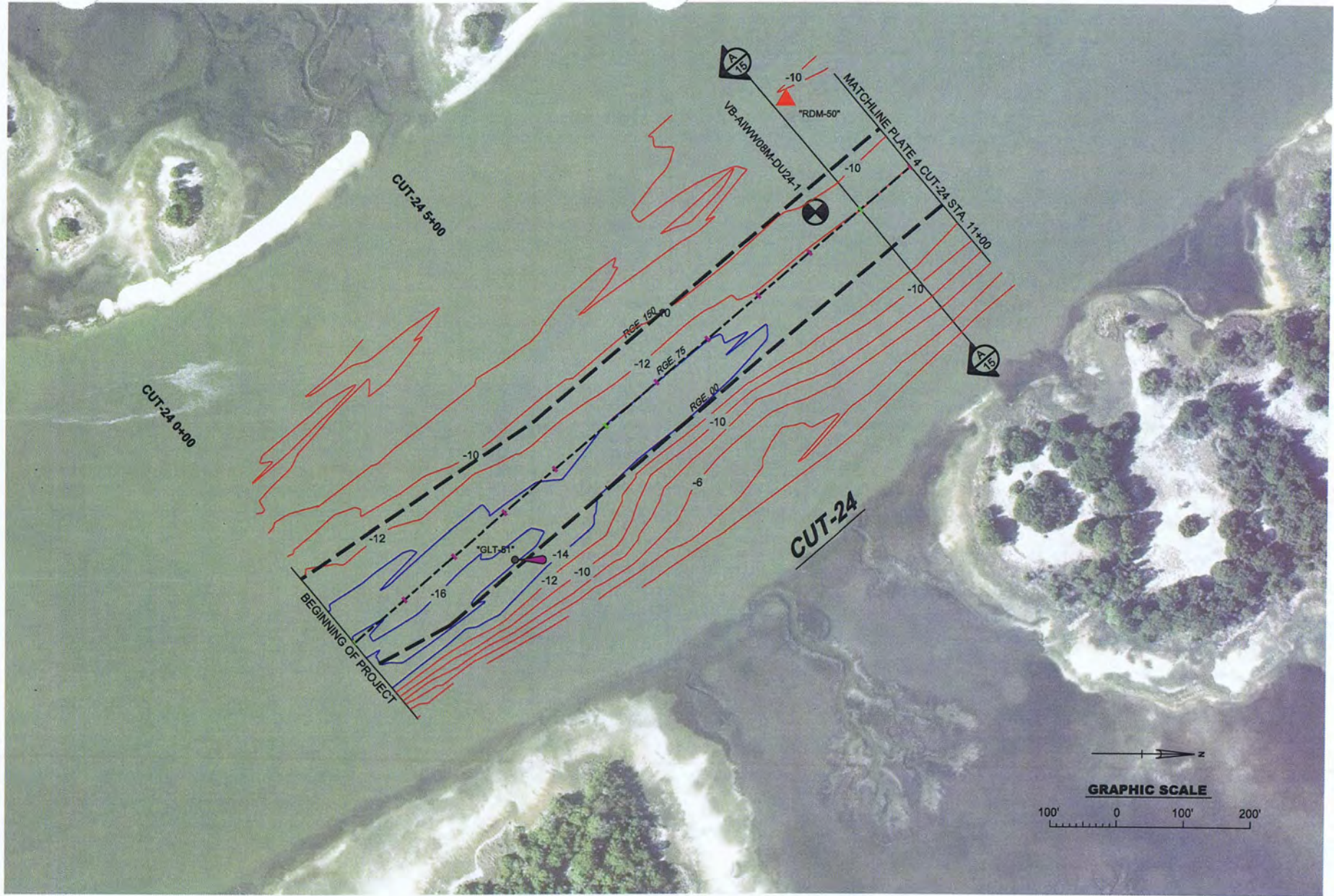
GENERAL NOTES:
- ALL AERIAL PHOTOGRAPHY PROVIDED BY FDOT AND DATED 2008.

ATLANTIC INTRACOASTAL WATERWAY
DUVAL AND NASSAU COUNTIES, FLORIDA

**MAINTENANCE DREDGING
VICINITY OF SAWPIT CREEK**
**PLATE LAYOUT
AND SURVEY NOTES**

PLATE:

2



US Army Corps
of Engineers
Jacksonville District

WQC PLATES
NOT FOR CONSTRUCTION

DEPARTMENT OF THE ARMY
JACKSONVILLE DISTRICT, CORPS OF ENGINEERS
JACKSONVILLE, FLORIDA

FILE NAME:
SawpitFY11-WQCSht03.dgn

DATED:
OCT 2011

SCALE:
AS SHOWN

DWN BY:
BTM

DSN BY:
SR

CKD BY:
CKM

GENERAL NOTES:

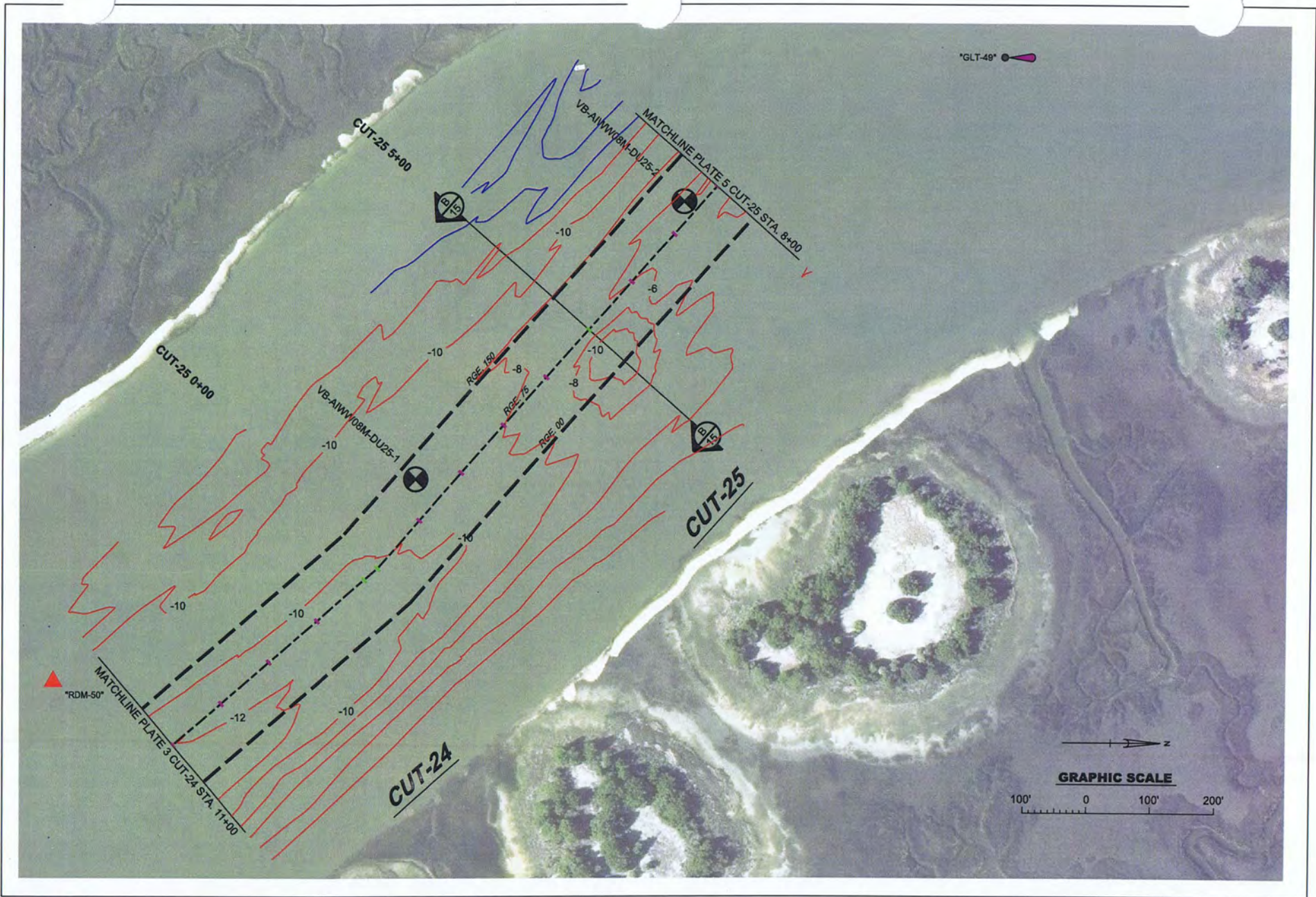
- CONTOURS SHOWN ARE AT 2 FOOT INTERVALS
- RED CONTOURS ARE ABOVE PROJECT DEPTH
- BLUE CONTOURS ARE BELOW PROJECT DEPTH (> 12 FT)

ATLANTIC INTRACOASTAL WATERWAY
DUVAL AND NASSAU COUNTIES, FLORIDA

**MAINTENANCE DREDGING
VICINITY OF SAWPIT CREEK**
PLAN VIEW:
CUT-24 STA. 0+00 TO CUT-24 STA. 11+00

PLATE:

3



WQC PLATES
NOT FOR CONSTRUCTION
 DEPARTMENT OF THE ARMY
 JACKSONVILLE DISTRICT, CORPS OF ENGINEERS
 JACKSONVILLE, FLORIDA

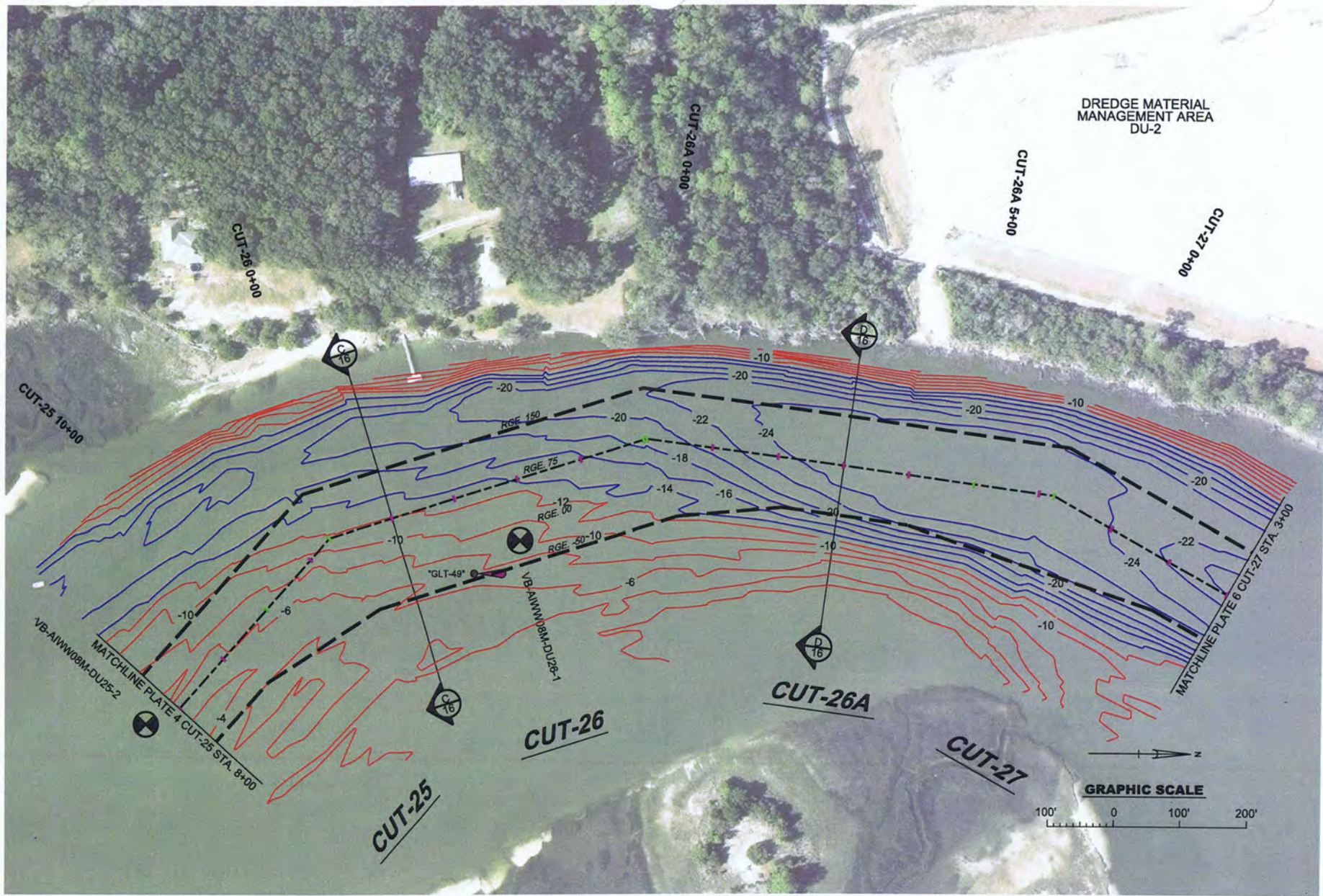
FILE NAME:
 SawplfY11-WQCSht04.dgn
DATED:
 OCT 2011
SCALE:
 AS SHOWN

DWN BY:
 BTM
DSN BY:
 S R
CKD BY:
 CKM

GENERAL NOTES:
 - CONTOURS SHOWN ARE AT 2 FOOT INTERVALS
 - RED CONTOURS ARE ABOVE PROJECT DEPTH
 - BLUE CONTOURS ARE BELOW PROJECT DEPTH (> 12 FT)

ATLANTIC INTRACOASTAL WATERWAY
 DUVAL AND NASSAU COUNTIES, FLORIDA
MAINTENANCE DREDGING
VICINITY OF SAWPIT CREEK
PLAN VIEW:
 CUT-24 STA. 11+00 TO CUT-25 STA. 8+00

PLATE:
 4



US Army Corps of Engineers
Jacksonville District

WQC PLATES
NOT FOR CONSTRUCTION

DEPARTMENT OF THE ARMY
JACKSONVILLE DISTRICT, CORPS OF ENGINEERS
JACKSONVILLE, FLORIDA

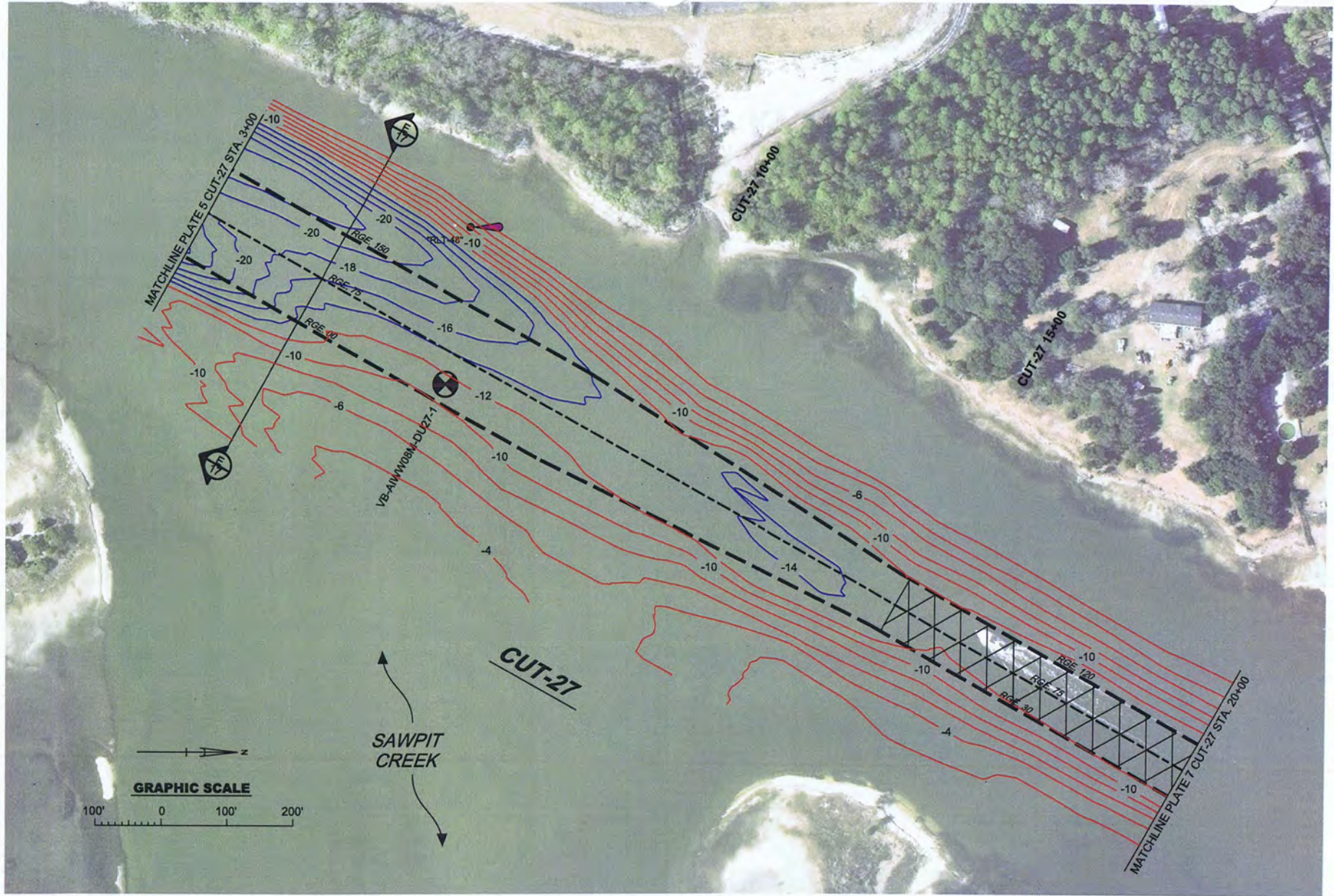
FILE NAME:
SawpItFY11-WQCSht05.dgn
DATED:
OCT 2011
SCALE:
AS SHOWN

DWN BY:
BTM
DSN BY:
S R
CKD BY:
CKM

GENERAL NOTES:
- CONTOURS SHOWN ARE AT 2 FOOT INTERVALS
- RED CONTOURS ARE ABOVE PROJECT DEPTH
- BLUE CONTOURS ARE BELOW PROJECT DEPTH (> 12 FT)

ATLANTIC INTRACOASTAL WATERWAY
DUVAL AND NASSAU COUNTIES, FLORIDA
MAINTENANCE DREDGING
VICINITY OF SAWPIT CREEK
PLAN VIEW:
CUT-25 STA. 8+00 TO CUT-27 STA. 3+00

PLATE:
5



WQC PLATES
NOT FOR CONSTRUCTION
 DEPARTMENT OF THE ARMY
 JACKSONVILLE DISTRICT, CORPS OF ENGINEERS
 JACKSONVILLE, FLORIDA

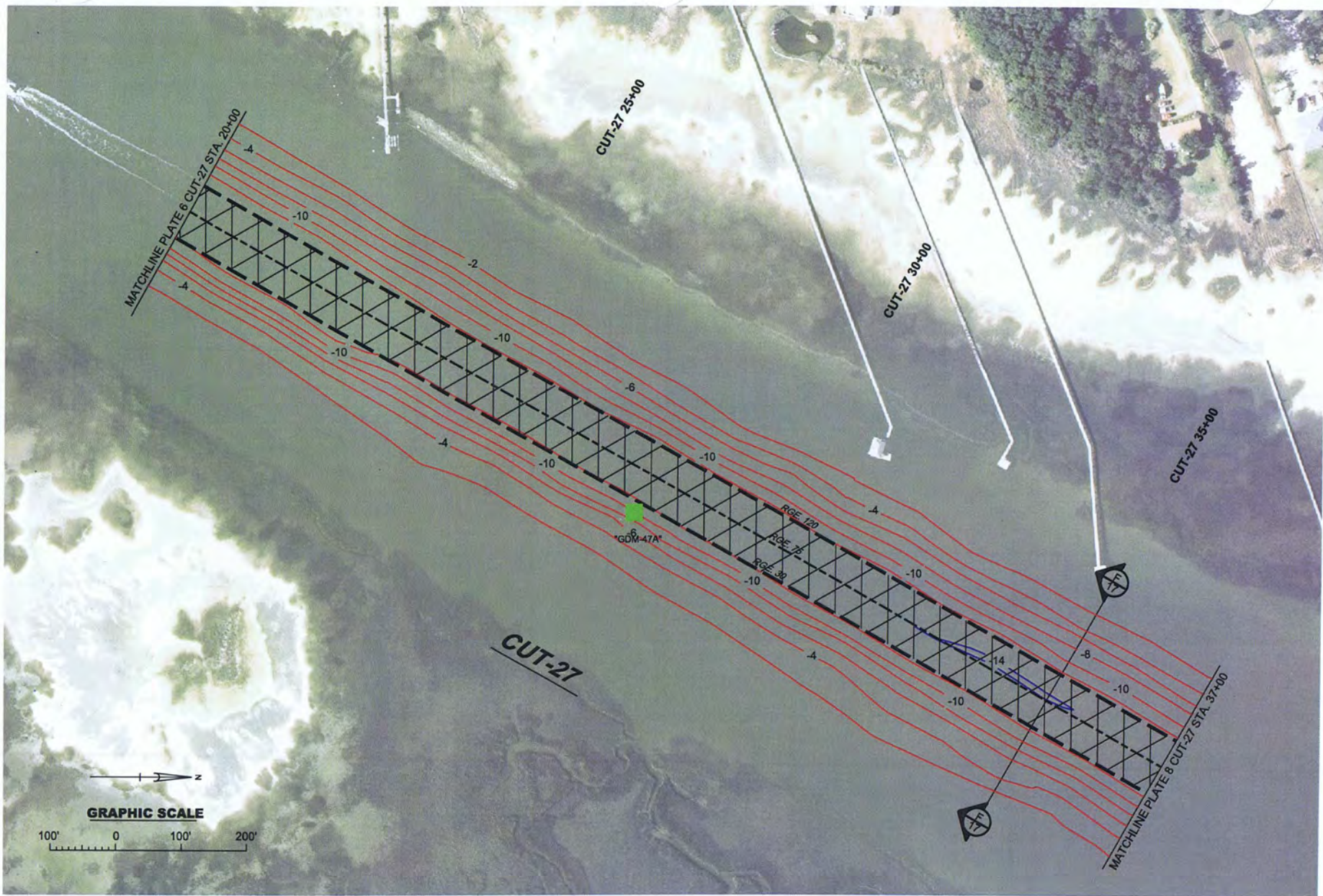
FILE NAME:
 SawpitFY11-WQCSht06.dgn
DATED:
 OCT 2011
SCALE:
 AS SHOWN

DWN BY:
 BTM
DSN BY:
 SR
CKD BY:
 CKM

GENERAL NOTES:
 - CONTOURS SHOWN ARE AT 2 FOOT INTERVALS
 - RED CONTOURS ARE ABOVE PROJECT DEPTH
 - BLUE CONTOURS ARE BELOW PROJECT DEPTH (> 12 FT)
 - MATERIAL FROM CUT-27 STA. 15+00 THROUGH CUT-27A STA. 0+00
 (CROSS-HATCHED AREA) IS NOT TO BE INCLUDED IN BEACH PLACEMENT

ATLANTIC INTRACOASTAL WATERWAY
 DUVAL AND NASSAU COUNTIES, FLORIDA
**MAINTENANCE DREDGING
 VICINITY OF SAWPIT CREEK**
PLAN VIEW:
CUT-27 STA. 3+00 TO CUT-27 STA. 20+00

PLATE:
6



US Army Corps of Engineers
Jacksonville District

WQC PLATES
NOT FOR CONSTRUCTION

DEPARTMENT OF THE ARMY
JACKSONVILLE DISTRICT, CORPS OF ENGINEERS
JACKSONVILLE, FLORIDA

FILE NAME:
SawpItFY11-WQCSht07.dgn

DATED:
OCT 2011

SCALE:
AS SHOWN

DWN BY:
BTM

DSN BY:
SR

CKD BY:
CKM

GENERAL NOTES:

- CONTOURS SHOWN ARE AT 2 FOOT INTERVALS
- RED CONTOURS ARE ABOVE PROJECT DEPTH
- BLUE CONTOURS ARE BELOW PROJECT DEPTH (> 12 FT)
- MATERIAL FROM CUT-27 STA. 15+00 THROUGH CUT-27A STA. 0+00 (CROSS-HATCHED AREA) IS NOT TO BE INCLUDED IN BEACH PLACEMENT

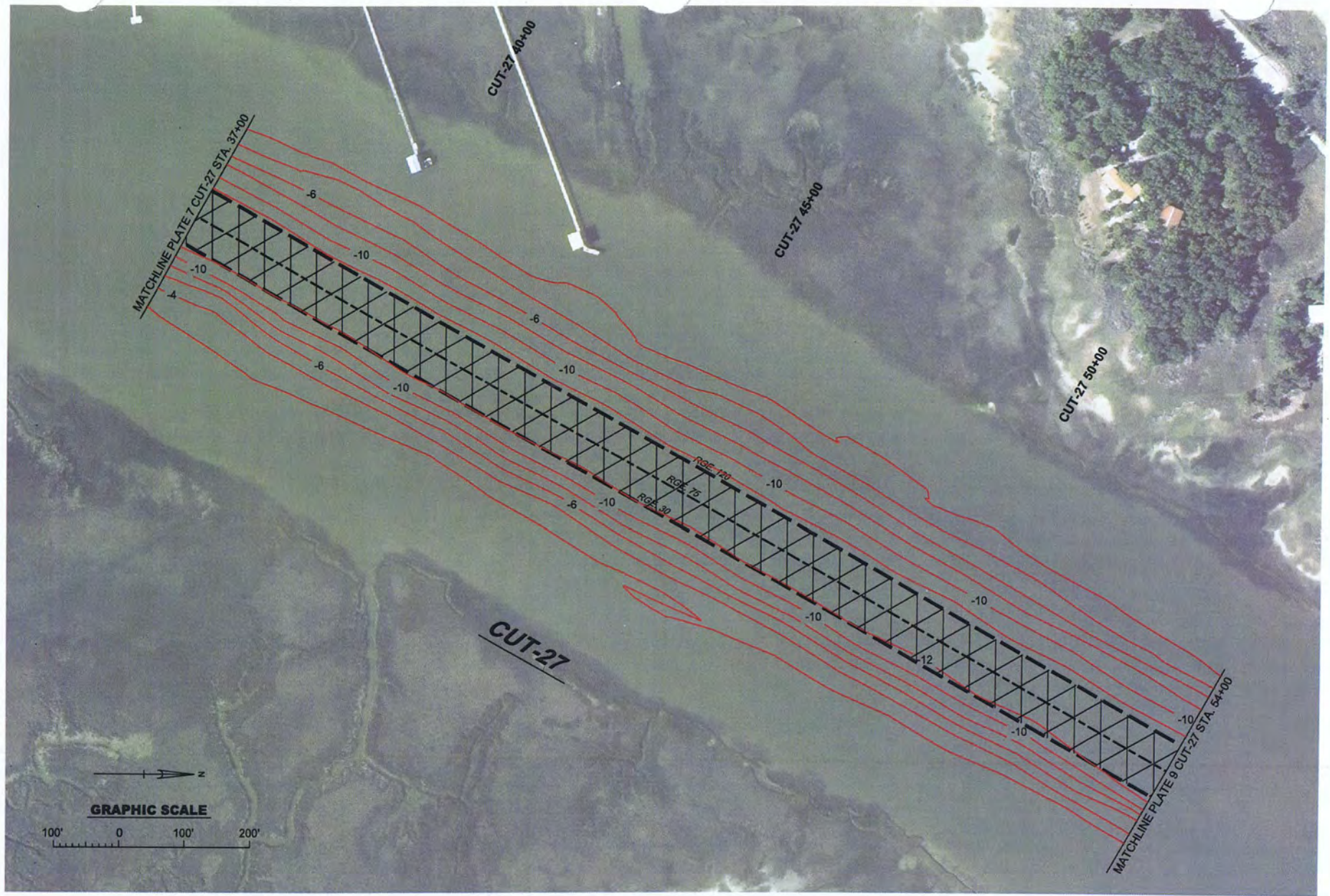
ATLANTIC INTRACOASTAL WATERWAY
DUVAL AND NASSAU COUNTIES, FLORIDA

**MAINTENANCE DREDGING
VICINITY OF SAWPIT CREEK**

PLAN VIEW:
CUT-27 STA. 20+00 TO CUT-27 STA. 37+00

PLATE:

7



US Army Corps
of Engineers
Jacksonville District

WQC PLATES
NOT FOR CONSTRUCTION
DEPARTMENT OF THE ARMY
JACKSONVILLE DISTRICT, CORPS OF ENGINEERS
JACKSONVILLE, FLORIDA

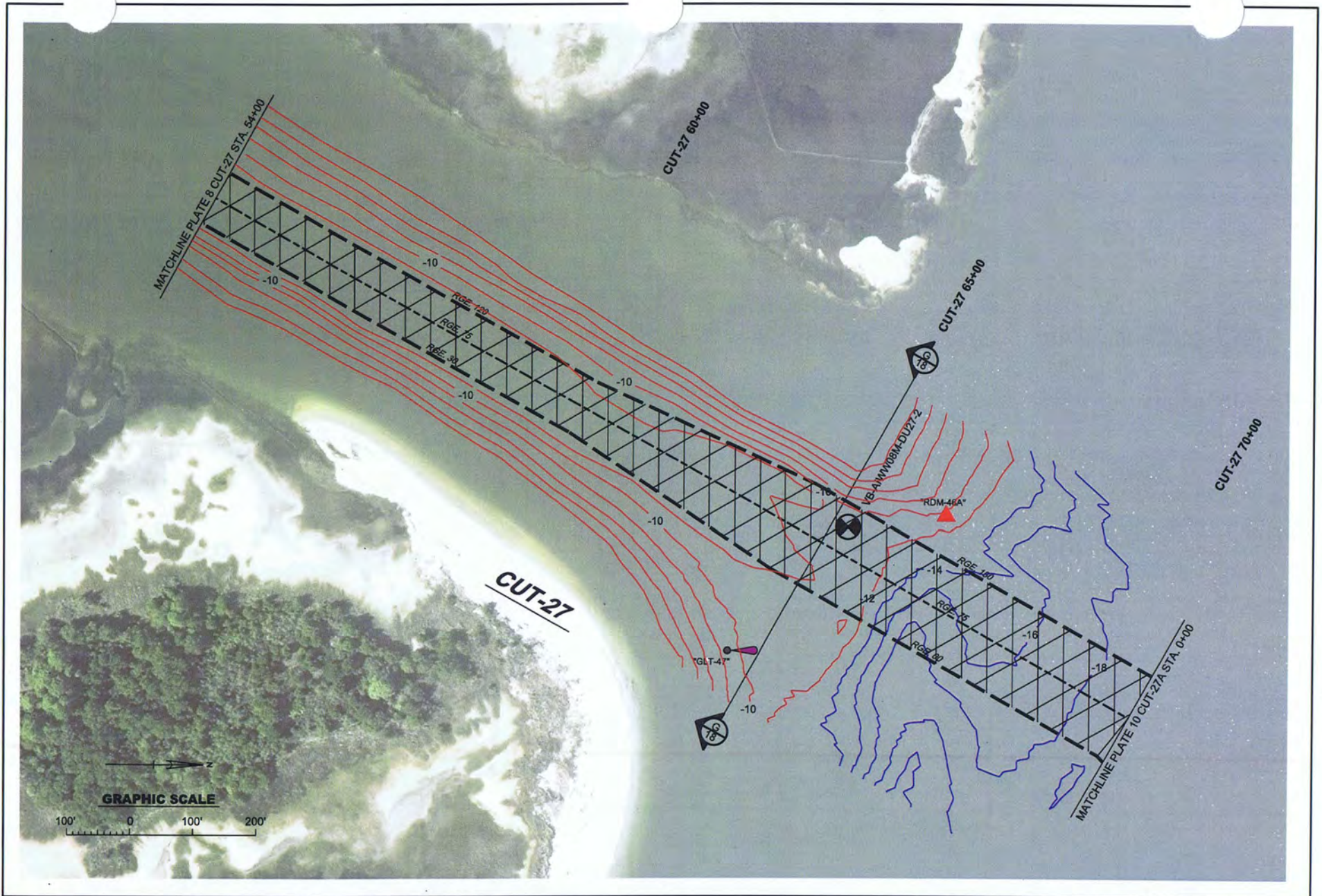
FILE NAME:
SawpItFY11-WQCSht08.dgn
DATED:
OCT 2011
SCALE:
AS SHOWN


DWN BY:
BTM
DSN BY:
SR
CKD BY:
CKM

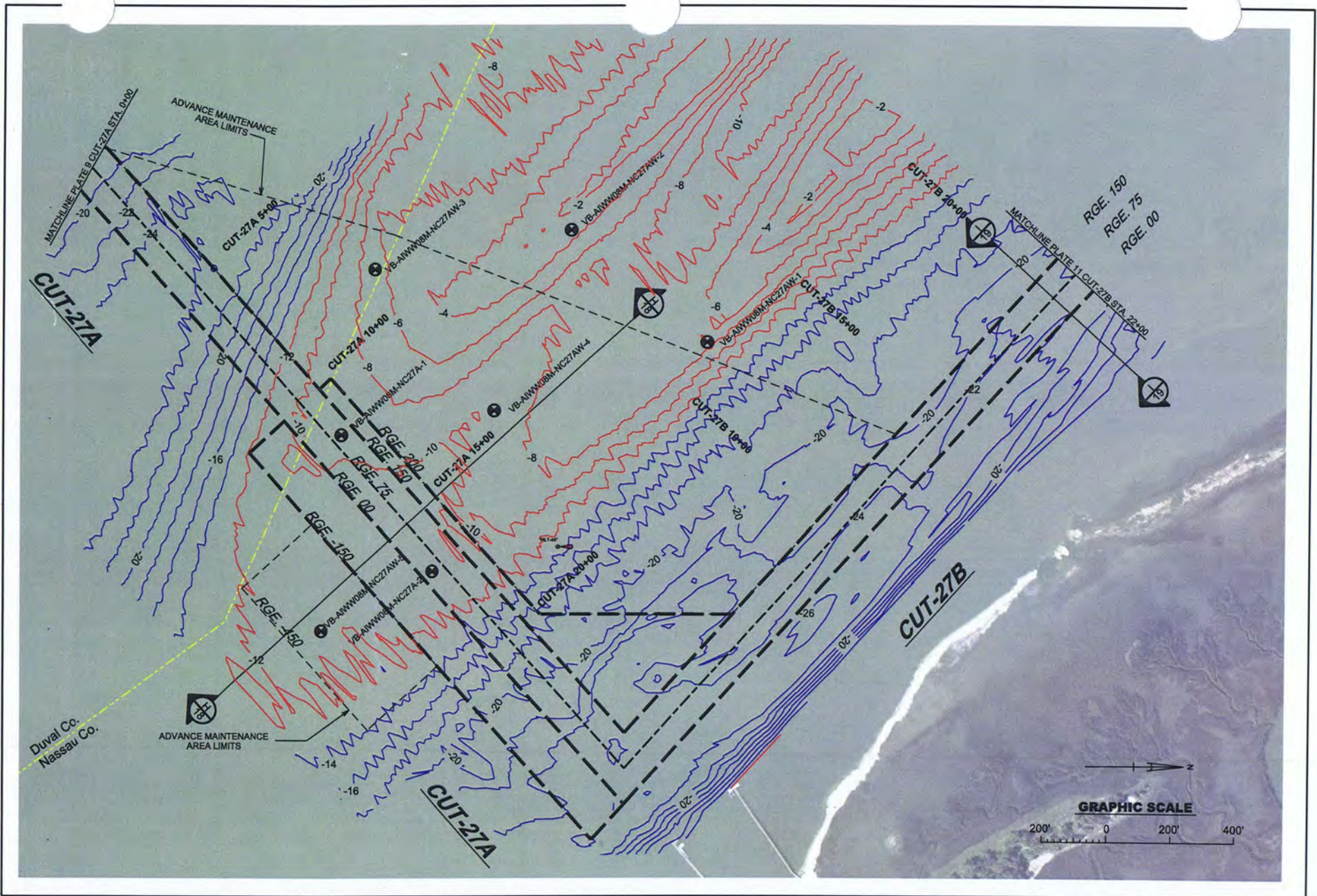
GENERAL NOTES:
- CONTOURS SHOWN ARE AT 2 FOOT INTERVALS
- RED CONTOURS ARE ABOVE PROJECT DEPTH
- BLUE CONTOURS ARE BELOW PROJECT DEPTH (> 12 FT)
- MATERIAL FROM CUT-27 STA. 15+00 THROUGH CUT-27A STA. 0+00
(CROSS-HATCHED AREA) IS NOT TO BE INCLUDED IN BEACH PLACEMENT


ATLANTIC INTRACOASTAL WATERWAY
DUVAL AND NASSAU COUNTIES, FLORIDA
**MAINTENANCE DREDGING
VICINITY OF SAWPIT CREEK**
PLAN VIEW:
CUT-27 STA. 37+00 TO CUT-27 STA. 54+00

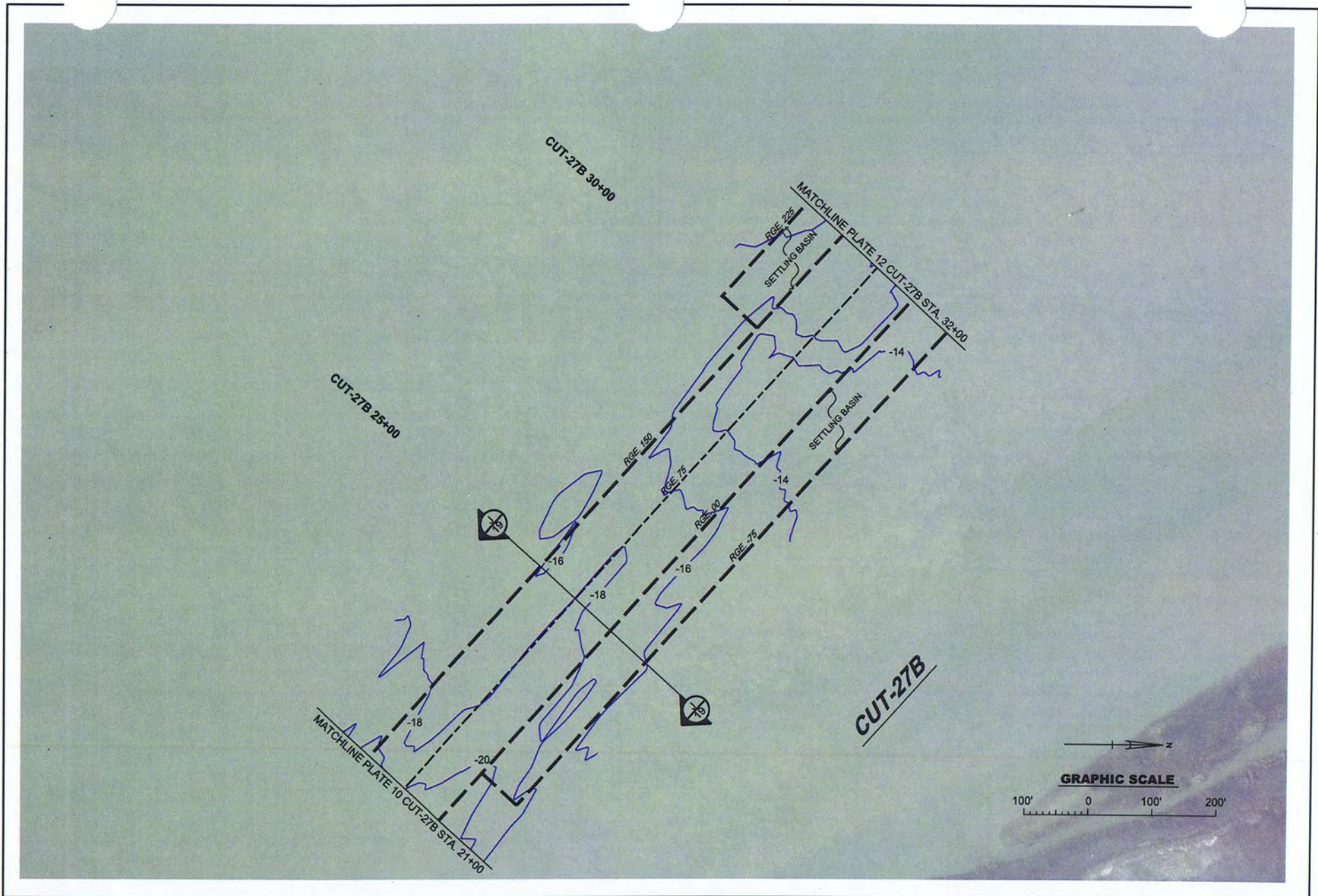
PLATE:
8



 US Army Corps of Engineers Jacksonville District	WQC PLATES NOT FOR CONSTRUCTION	FILE NAME: SawplfFY11-WQCSht09.dgn	DWN BY: BTM	GENERAL NOTES: - CONTOURS SHOWN ARE AT 2 FOOT INTERVALS - RED CONTOURS ARE ABOVE PROJECT DEPTH - BLUE CONTOURS ARE BELOW PROJECT DEPTH (> 12 FT) - MATERIAL FROM CUT-27 STA. 15+00 THROUGH CUT-27A STA. 0+00 (CROSS-HATCHED AREA) IS NOT TO BE INCLUDED IN BEACH PLACEMENT	ATLANTIC INTRACOASTAL WATERWAY DUVAL AND NASSAU COUNTIES, FLORIDA MAINTENANCE DREDGING VICINITY OF SAWPIT CREEK PLAN VIEW: CUT-27 STA. 54+00 TO CUT-27A 0+00	PLATE: 9
	DEPARTMENT OF THE ARMY JACKSONVILLE DISTRICT, CORPS OF ENGINEERS JACKSONVILLE, FLORIDA	DATED: OCT 2011	DSN BY: SR			
	SCALE: AS SHOWN	CKD BY: CKM				



 US Army Corps of Engineers Jacksonville District	WQC PLATES NOT FOR CONSTRUCTION	FILE NAME: SawpitFY11-WQCSh10.dgn	DWN BY: BTM	GENERAL NOTES: - CONTOURS SHOWN ARE AT 2 FOOT INTERVALS - RED CONTOURS ARE ABOVE PROJECT DEPTH - BLUE CONTOURS ARE BELOW PROJECT DEPTH (> 12 FT) - SCALE SHOWN AS 1" = 400'	ATLANTIC INTRACOASTAL WATERWAY DUVAL AND NASSAU COUNTIES, FLORIDA MAINTENANCE DREDGING VICINITY OF SAWPIT CREEK PLAN VIEW: CUT-27A STA. 0+00 TO CUT-27B STA. 21+00	PLATE: 10
	DEPARTMENT OF THE ARMY JACKSONVILLE DISTRICT, CORPS OF ENGINEERS JACKSONVILLE, FLORIDA	DATED: OCT 2011	DSN BY: SR			



WQC PLATES
NOT FOR CONSTRUCTION

DEPARTMENT OF THE ARMY
JACKSONVILLE DISTRICT, CORPS OF ENGINEERS
JACKSONVILLE, FLORIDA

FILE NAME:
SawplfFY11-WQCSht11.dgn
DATED:
OCT 2011
SCALE:
AS SHOWN

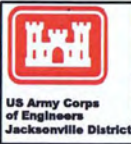
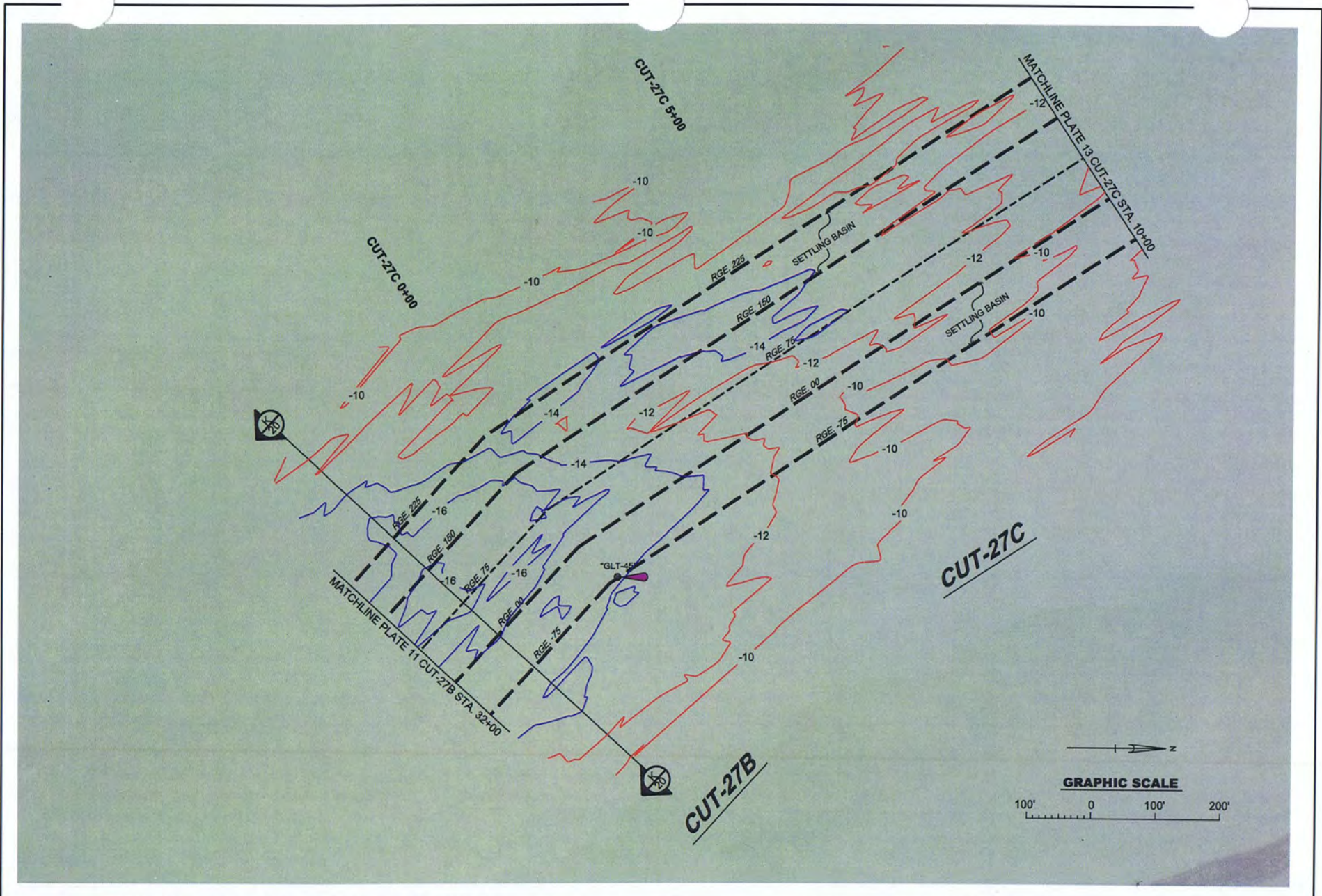
DWN BY:
BTM
DSN BY:
S R
CKD BY:
CKM

GENERAL NOTES:
- CONTOURS SHOWN ARE AT 2 FOOT INTERVALS
- RED CONTOURS ARE ABOVE PROJECT DEPTH
- BLUE CONTOURS ARE BELOW PROJECT DEPTH (> 12 FT)

ATLANTIC INTRACOASTAL WATERWAY
DUVAL AND NASSAU COUNTIES, FLORIDA
**MAINTENANCE DREDGING
VICINITY OF SAWPIT CREEK**
PLAN VIEW:
CUT-27B STA. 21+00 TO CUT-27B STA. 32+00

PLATE:

11



WQC PLATES
NOT FOR CONSTRUCTION

DEPARTMENT OF THE ARMY
 JACKSONVILLE DISTRICT, CORPS OF ENGINEERS
 JACKSONVILLE, FLORIDA

FILE NAME:
 Sawp1tFY11-WQCSht12.dgn

DATED:
 OCT 2011

SCALE:
 AS SHOWN

DWN BY:
 BTM

DSN BY:
 S R

CKD BY:
 CKM

GENERAL NOTES:

- CONTOURS SHOWN ARE AT 2 FOOT INTERVALS
- RED CONTOURS ARE ABOVE PROJECT DEPTH
- BLUE CONTOURS ARE BELOW PROJECT DEPTH (> 12 FT)

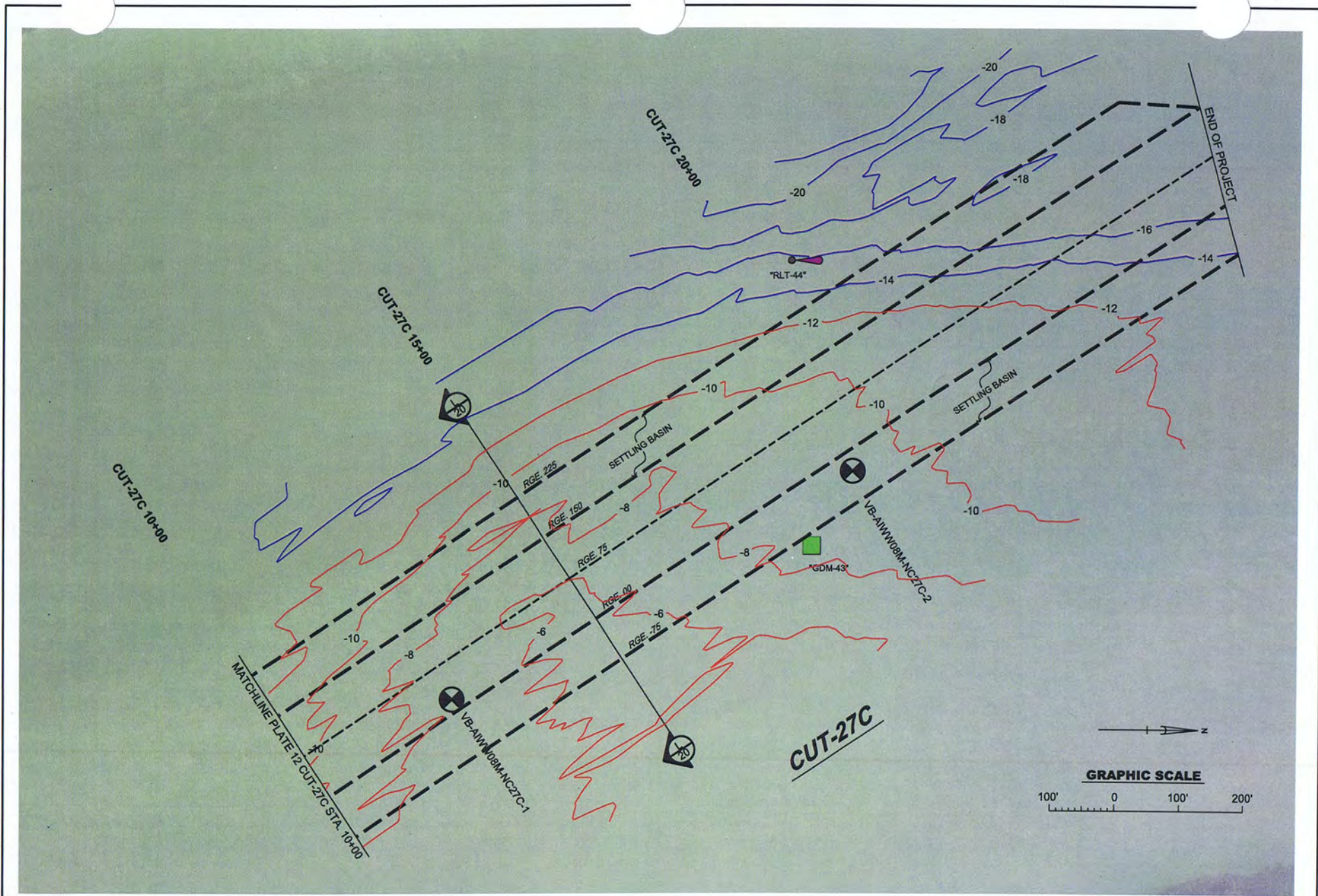
ATLANTIC INTRACOASTAL WATERWAY
 DUVAL AND NASSAU COUNTIES, FLORIDA


MAINTENANCE DREDGING
VICINITY OF SAWPIT CREEK

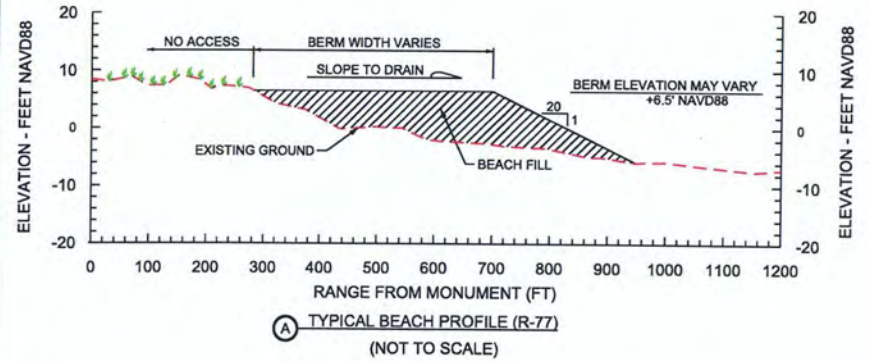
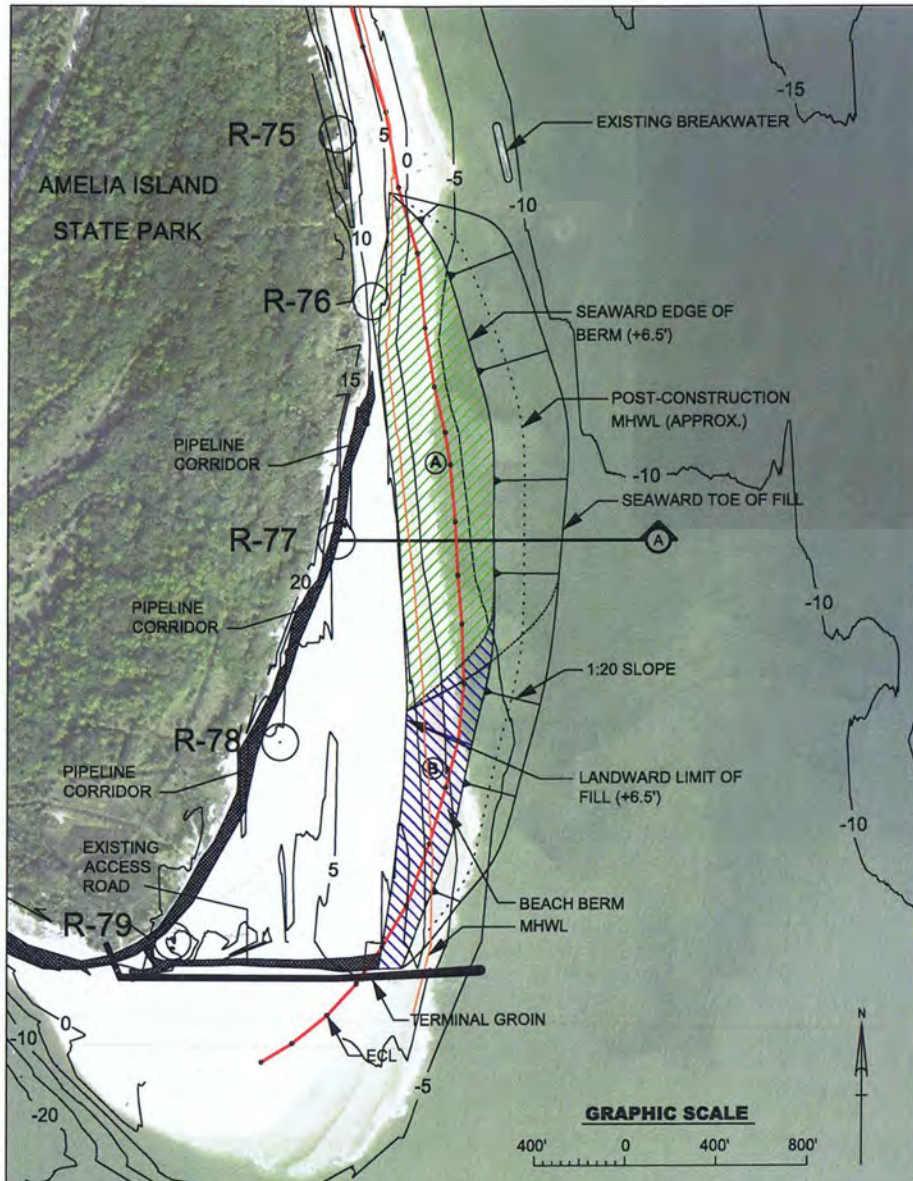
PLAN VIEW:
CUT-27B STA. 32+00 TO CUT-27C STA. 10+00

PLATE:

12



 US Army Corps of Engineers Jacksonville District	WQC PLATES NOT FOR CONSTRUCTION	FILE NAME: SawpitFY11-WQCSht13.dgn	DWN BY: BTM	GENERAL NOTES: - CONTOURS SHOWN ARE AT 2 FOOT INTERVALS - RED CONTOURS ARE ABOVE PROJECT DEPTH - BLUE CONTOURS ARE BELOW PROJECT DEPTH (> 12 FT)	ATLANTIC INTRACOASTAL WATERWAY DUVAL AND NASSAU COUNTIES, FLORIDA MAINTENANCE DREDGING VICINITY OF SAWPIT CREEK PLAN VIEW: CUT-27C STA. 10+00 TO CUT-27D STA. 0+00	PLATE: <div style="text-align: right; font-size: 1.2em;">13</div>
	DEPARTMENT OF THE ARMY	DATED: OCT 2011	DGN BY: S R			
	JACKSONVILLE DISTRICT, CORPS OF ENGINEERS JACKSONVILLE, FLORIDA	SCALE: AS SHOWN	CKD BY: CKM			



NOTES:

1. BERM WIDTH AND ELEVATION WILL VARY DEPENDING UPON EXISTING CONDITIONS AT THE TIME OF DREDGING. IF THERE IS NOT SUFFICIENT CAPACITY IN THE BEACH TEMPLATE, THE BERM WILL EXTEND SEAWARD.
2. PIPELINE ROUTE MAY VARY PER DREDGING EVENT.
3. AREA "A" (GREEN HATCH) WILL BE FILLED PRIOR TO AREA "B" (BLUE HATCH).
4. ELEVATIONS SHOWN ARE IN NAD83 (HORIZONTAL) AND NAVD88 (VERTICAL).
5. BEACH SURVEY WAS OBTAINED FROM OLSEN ASSOCIATES, INC. DATA WAS COLLECTED IN JULY 2010.
6. CONTOURS SHOWN ARE IN 5-FOOT INTERVALS.

LEGEND	
	FDEP CONTROL MONUMENT
	EROSION CONTROL LINE (ECL)
	MEAN HIGH WATER LINE (MHWL)
	PRIORITY AREA A
	PRIORITY AREA B

	HORIZONTAL (NAD83) COORDINATES	
	NORTHING	EASTING
R-73	2,253,650.497	518,247.806
R-74	2,252,643.225	518,475.390
R-75	2,251,709.008	518,692.111
R-76	2,250,983.140	518,845.368
R-77	2,249,946.524	518,695.236
R-78	2,249,070.225	518,449.310
R-79	2,248,204.064	517,979.057



US Army Corps of Engineers
Jacksonville District

WQC PLATES
NOT FOR CONSTRUCTION

DEPARTMENT OF THE ARMY
JACKSONVILLE DISTRICT, CORPS OF ENGINEERS
JACKSONVILLE, FLORIDA

FILE NAME:
SawpitFY11-WQCSht14.dgn

DATED:
OCT 2011

SCALE:
AS SHOWN

DWN BY:
BTM

DSN BY:
S R

CKD BY:
CKM

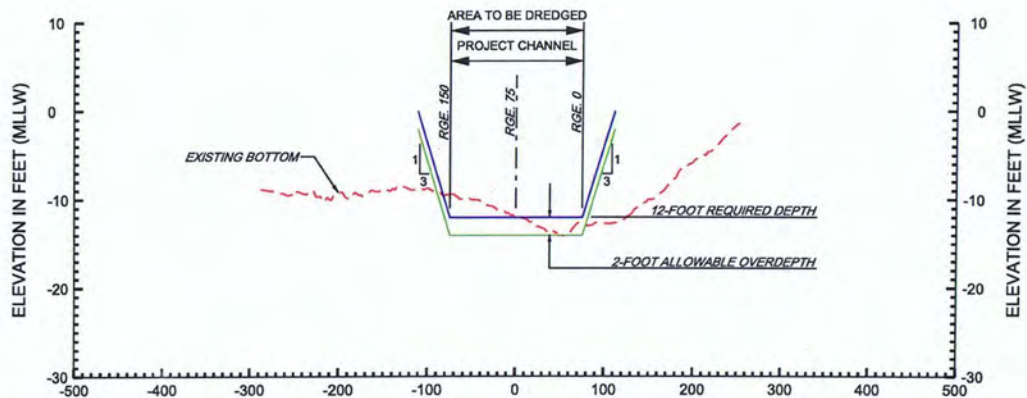
GENERAL NOTES:

ATLANTIC INTRACOASTAL WATERWAY
DUVAL AND NASSAU COUNTIES, FLORIDA

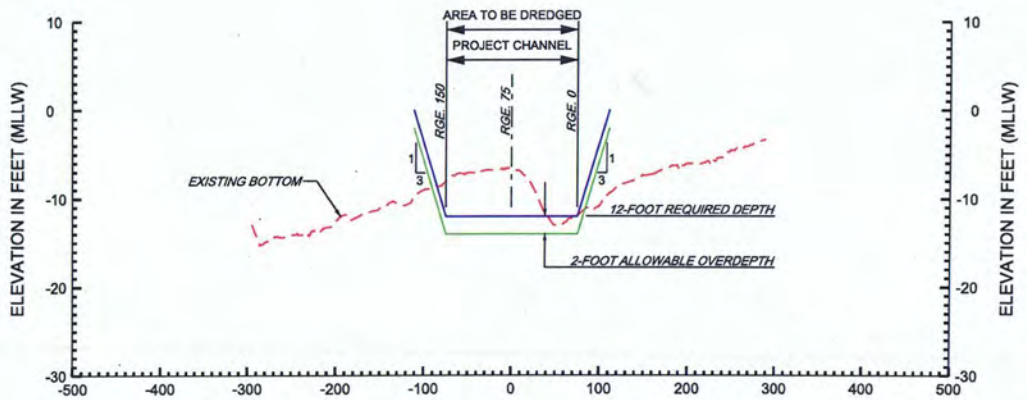
**MAINTENANCE DREDGING
VICINITY OF SAWPIT CREEK
BEACH PLACEMENT**

PLATE:

14



A
3
CUT-24 10+00



B
4
CUT-25 5+00

GRAPHIC SCALE

HORIZONTAL 50' 0 50' 100'

VERTICAL 5' 0 5' 10'



US Army Corps of Engineers Jacksonville District

WQC PLATES
NOT FOR CONSTRUCTION

DEPARTMENT OF THE ARMY
JACKSONVILLE DISTRICT, CORPS OF ENGINEERS
JACKSONVILLE, FLORIDA

FILE NAME:
SawpitFY11-WQCSht15.dgn
DATED:
OCT 2011
SCALE:
AS SHOWN

DWN BY:
BTM
DSN BY:
S R
CKD BY:
CKM

GENERAL NOTES:

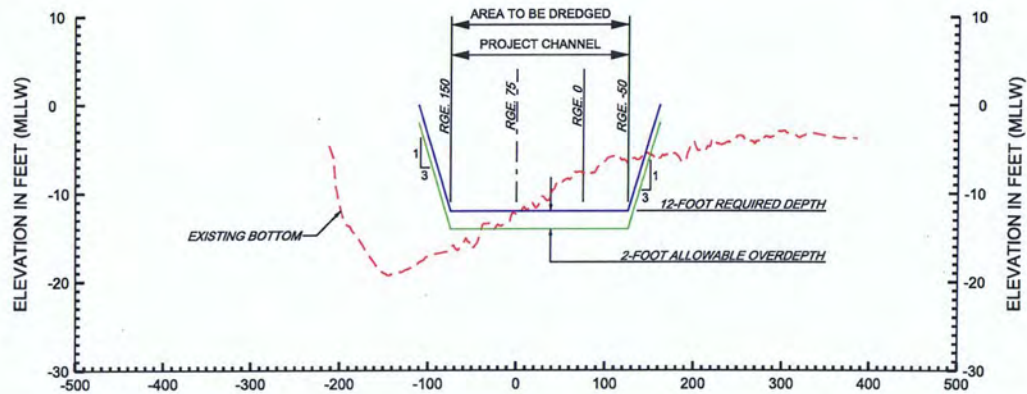
ATLANTIC INTRACOASTAL WATERWAY
DUVAL AND NASSAU COUNTIES, FLORIDA

**MAINTENANCE DREDGING
VICINITY OF SAWPIT CREEK**

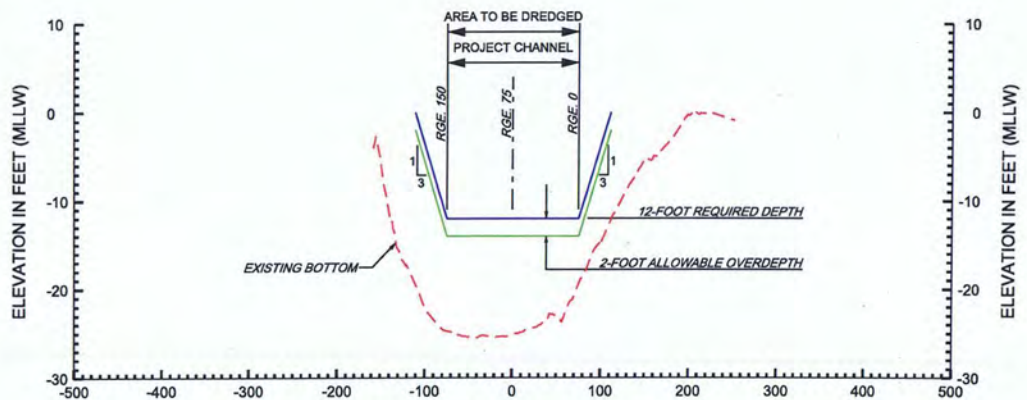
**CROSS SECTIONS:
CUT-24 STA. 10+00 AND CUT-25 STA. 5+00**

PLATE:

15



C
5 **CUT-26 1+00**



D
5 **CUT-26A 3+00**

GRAPHIC SCALE

HORIZONTAL 50' 0 50' 100'

VERTICAL 5' 0 5' 10'



US Army Corps
of Engineers
Jacksonville District

WQC PLATES
NOT FOR CONSTRUCTION

DEPARTMENT OF THE ARMY
JACKSONVILLE DISTRICT, CORPS OF ENGINEERS
JACKSONVILLE, FLORIDA

FILE NAME:
Sawp1tFY11-WQCSh16.dgn
DATED:
OCT 2011
SCALE:
AS SHOWN

DWN BY:
BTM
DSN BY:
S R
CKD BY:
CKM

GENERAL NOTES:

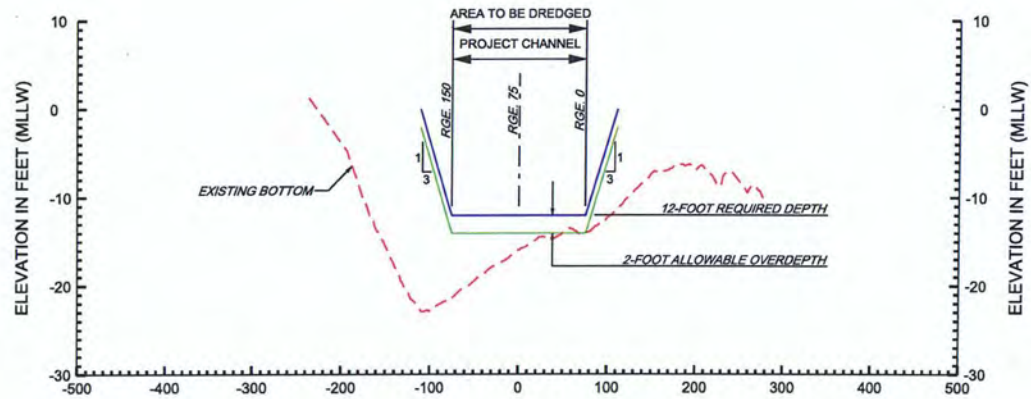
ATLANTIC INTRACOASTAL WATERWAY
DUVAL AND NASSAU COUNTIES, FLORIDA

**MAINTENANCE DREDGING
VICINITY OF SAWPIT CREEK**

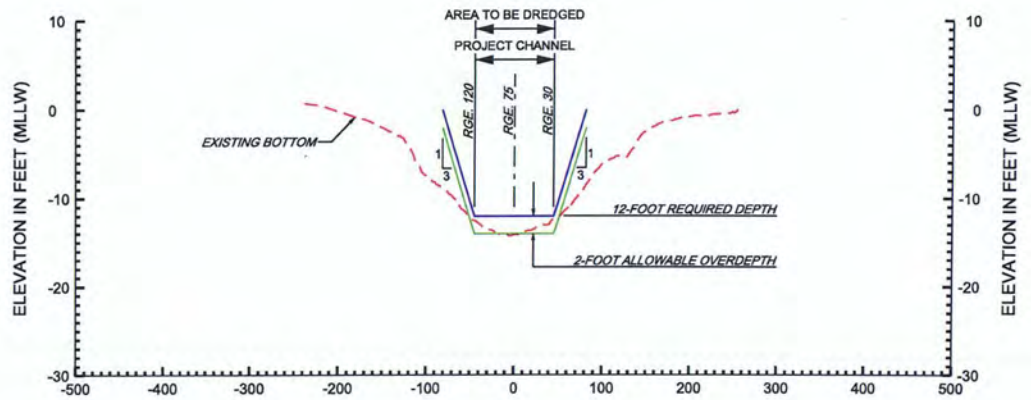
**CROSS SECTIONS:
CUT-26 STA. 1+00 AND CUT-26A STA. 3+00**

PLATE:

16



E
6 — **CUT-27 5+00**



F
7 — **CUT-27 35+00**

GRAPHIC SCALE

HORIZONTAL 50' 0 50' 100'

VERTICAL 5' 0 5' 10'



US Army Corps of Engineers Jacksonville District

WQC PLATES
NOT FOR CONSTRUCTION

DEPARTMENT OF THE ARMY
JACKSONVILLE DISTRICT, CORPS OF ENGINEERS
JACKSONVILLE, FLORIDA

FILE NAME:
SawpitFY11-WQCSht17.dgn
DATED:
OCT 2011
SCALE:
AS SHOWN

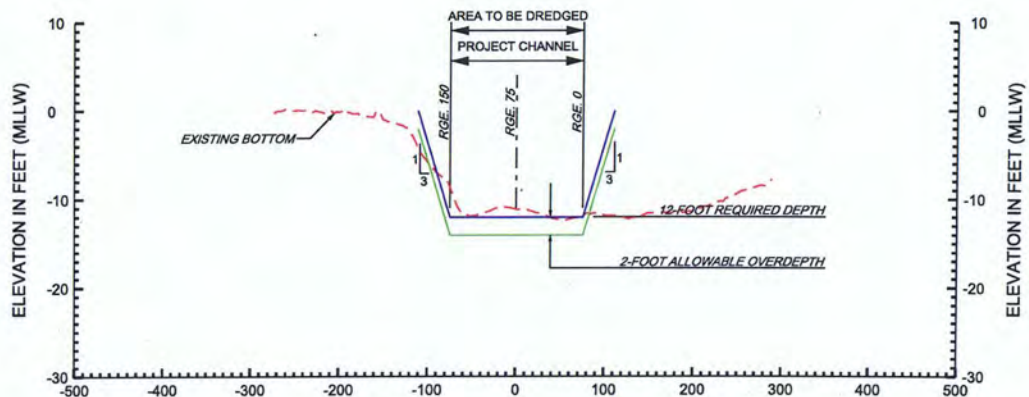
DWN BY:
BTM
DSN BY:
S R
CKD BY:
CKM

GENERAL NOTES:

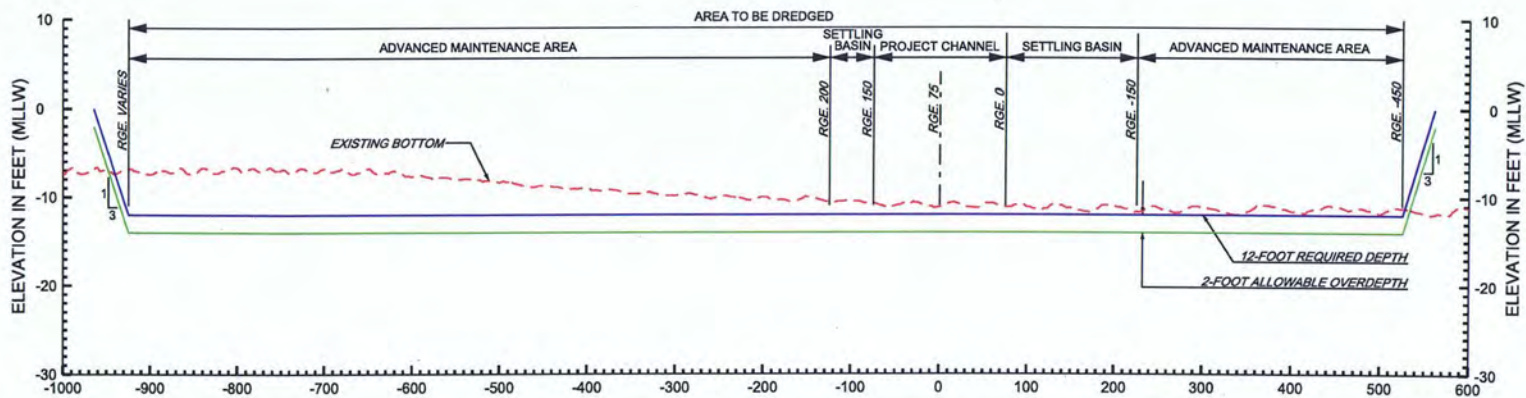
ATLANTIC INTRACOASTAL WATERWAY
DUVAL AND NASSAU COUNTIES, FLORIDA
**MAINTENANCE DREDGING
VICINITY OF SAWPIT CREEK**
**CROSS SECTIONS:
CUT-27 STA. 5+00 AND CUT-27 STA. 35+00**

PLATE:

17



G
9 **CUT-27 65+00**



H
10 **CUT-27A 15+00**

GRAPHIC SCALE

HORIZONTAL 50' 0 50' 100'

VERTICAL 5' 0 5' 10'



US Army Corps of Engineers Jacksonville District

WQC PLATES
NOT FOR CONSTRUCTION

DEPARTMENT OF THE ARMY
JACKSONVILLE DISTRICT, CORPS OF ENGINEERS
JACKSONVILLE, FLORIDA

FILE NAME:
SawplfFY11-WQCSht18.dgn
DATED:
OCT 2011
SCALE:
AS SHOWN

DWN BY:
BTM
DSN BY:
S R
CKD BY:
CKM

GENERAL NOTES:

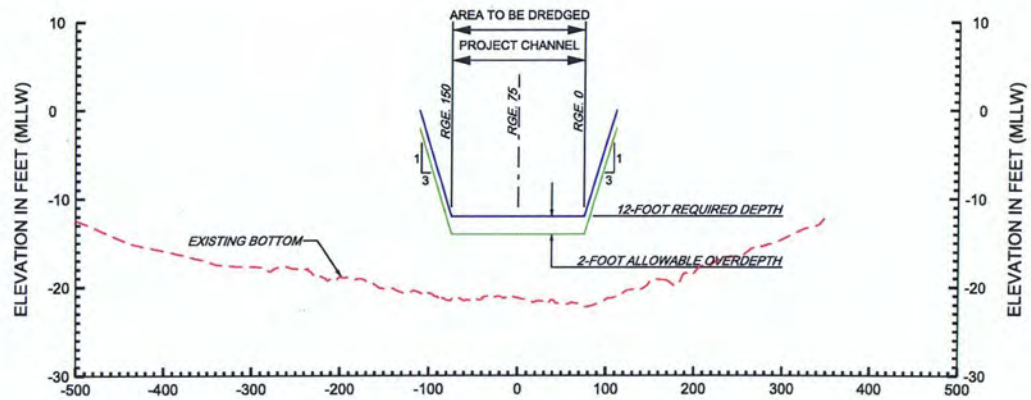
ATLANTIC INTRACOASTAL WATERWAY
DUVAL AND NASSAU COUNTIES, FLORIDA

**MAINTENANCE DREDGING
VICINITY OF SAWPIT CREEK**

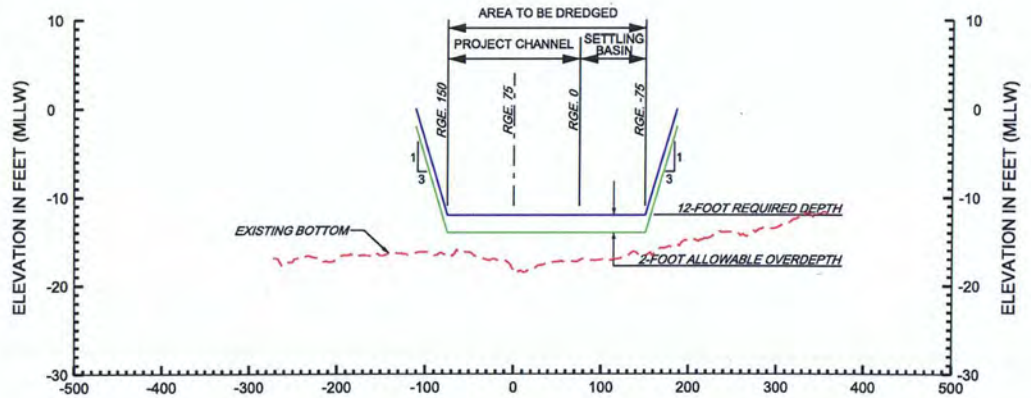
CROSS SECTIONS:
CUT-27 STA. 65+00 AND CUT-27A STA. 15+00

PLATE:

18

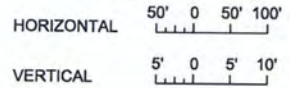


I
10
CUT-27B 20+00



J
11
CUT-27B 25+00

GRAPHIC SCALE



US Army Corps of Engineers Jacksonville District

WQC PLATES
NOT FOR CONSTRUCTION

DEPARTMENT OF THE ARMY
JACKSONVILLE DISTRICT, CORPS OF ENGINEERS
JACKSONVILLE, FLORIDA

FILE NAME:
SawpjtFY11-WQCSh19.dgn
DATED:
OCT 2011
SCALE:
AS SHOWN

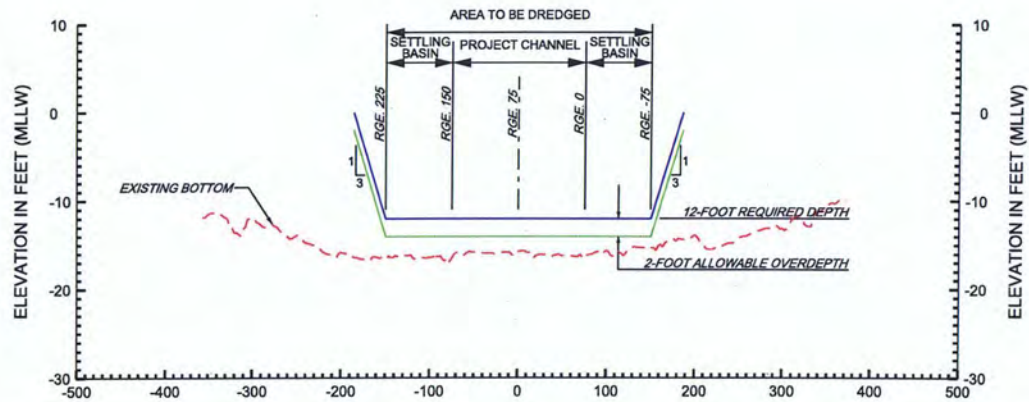
DWN BY:
BTM
DSN BY:
S R
CKD BY:
CKM

GENERAL NOTES:

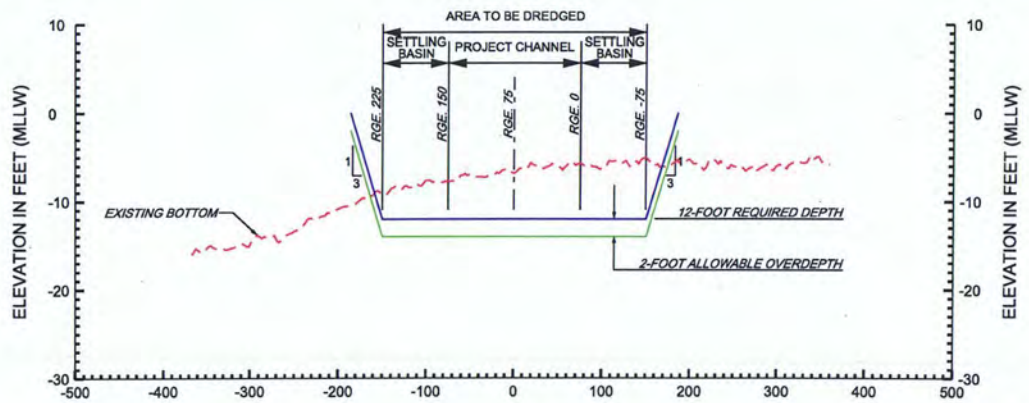
ATLANTIC INTRACOASTAL WATERWAY
DUVAL AND NASSAU COUNTIES, FLORIDA
**MAINTENANCE DREDGING
VICINITY OF SAWPIT CREEK**
CROSS SECTIONS:
CUT-27B STA. 20+00 AND CUT-27B STA. 25+00

PLATE:

19



K
12 **CUT-27B 33+00**



L
13 **CUT-27C 15+00**

GRAPHIC SCALE

HORIZONTAL 50' 0 50' 100'

VERTICAL 5' 0 5' 10'



US Army Corps
of Engineers
Jacksonville District

WQC PLATES
NOT FOR CONSTRUCTION

DEPARTMENT OF THE ARMY
JACKSONVILLE DISTRICT, CORPS OF ENGINEERS
JACKSONVILLE, FLORIDA

FILE NAME:
SawplfFY11-WQCSh20.dgn

DATED:
OCT 2011

SCALE:
AS SHOWN

DWN BY:
BTM

DSN BY:
SR

CKD BY:
CKM

GENERAL NOTES:

ATLANTIC INTRACOASTAL WATERWAY
DUVAL AND NASSAU COUNTIES, FLORIDA

**MAINTENANCE DREDGING
VICINITY OF SAWPIT CREEK**

CROSS SECTIONS:
CUT-27B STA. 33+00 AND CUT-27C STA. 15+00

PLATE:

20