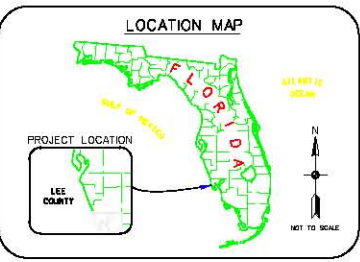
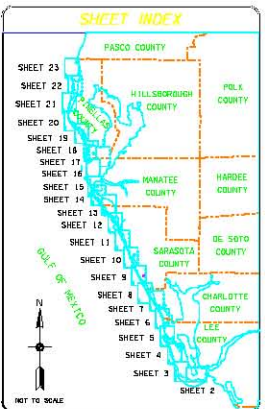
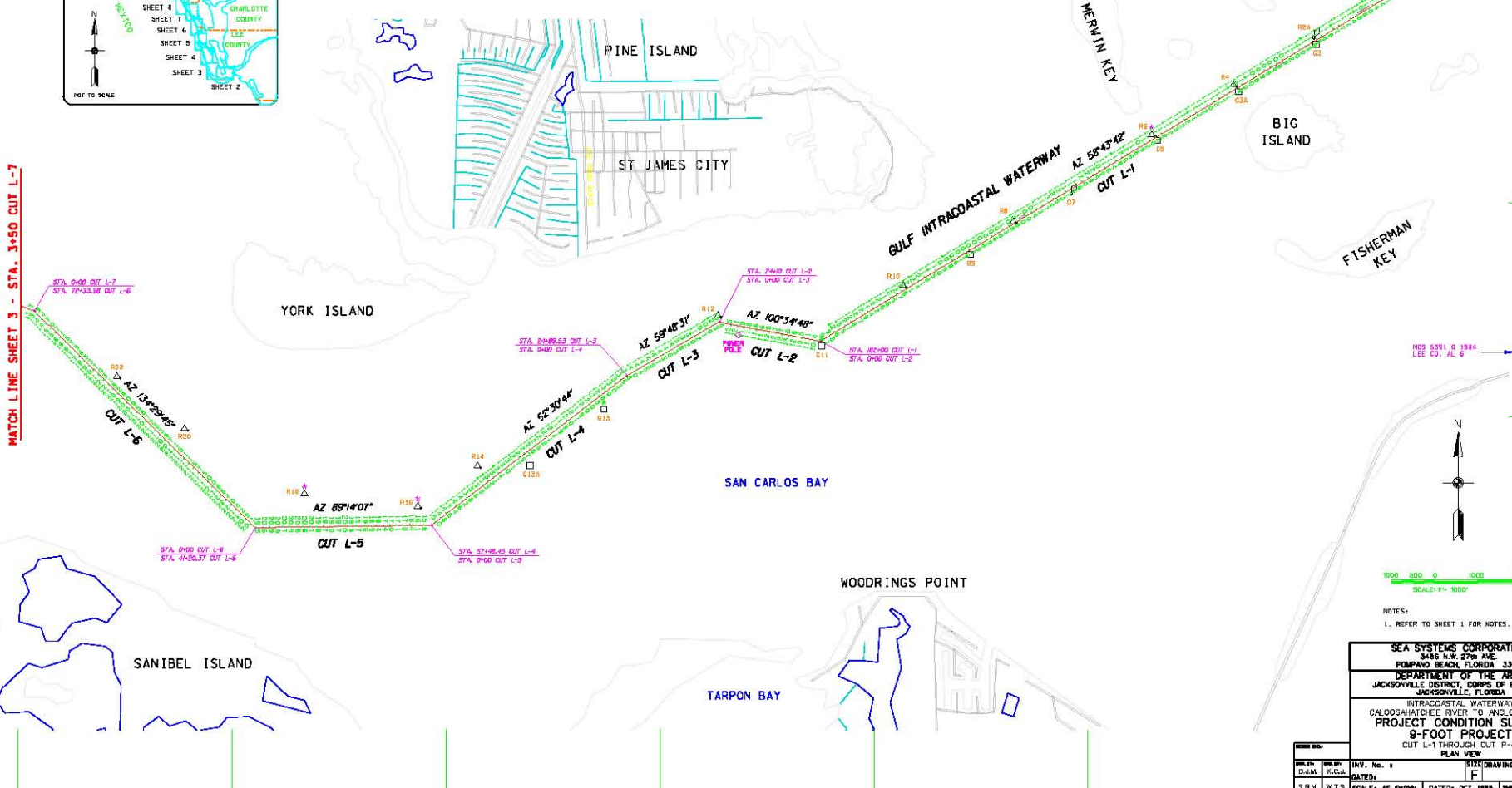


REVISIONS				
NO.	SYMBOL	DESCRIPTION	DATE	APPROVED

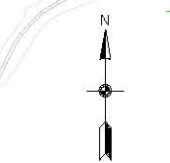


STATION	ELEVATION	CHORD BEARING	SLOPE	LENGTH	DATE
G101	494.537	711.371	26°30'58.83"	82°01'00.14"	8/12/98
G1	493.218	790.364	26°30'29.64"	85°01'14.66"	8/12/98
G2	492.119	789.984	26°30'25.84"	85°01'26.75"	8/12/98
G2A	490.431	788.859	26°30'14.82"	85°01'41.08"	8/12/98
G3	490.328	785.708	26°30'13.04"	85°01'46.96"	8/12/98
G4	488.404	787.778	26°30'03.83"	85°02'07.64"	8/12/98
G2A	488.216	787.608	26°30'00.12"	85°02'06.11"	8/12/98
G6	486.492	785.898	26°29'52.11"	85°02'28.68"	8/12/98
G6	486.612	785.453	26°29'50.79"	85°02'21.36"	8/12/98
G7	484.455	785.223	26°29'58.77"	85°02'45.68"	8/12/98
G8	483.258	784.583	26°29'52.16"	85°03'04.30"	8/12/98
G9	482.248	783.199	26°29'54.36"	85°03'15.41"	8/12/98
R10	480.480	783.040	26°29'17.06"	85°03'32.64"	8/12/98
R12	478.356	782.345	26°29'10.35"	85°04'20.23"	8/12/98
R10E	478.445	781.312	26°29'05.81"	85°04'15.84"	8/12/98
G11	478.780	781.448	26°29'03.27"	85°03'53.04"	8/12/98
R22	463.315	780.865	26°28'55.20"	85°05'44.74"	8/12/98
R13	473.682	780.181	26°28'48.31"	85°04'48.93"	8/12/98
R20	463.895	779.742	26°28'44.09"	85°06'37.34"	8/12/98
R14	470.738	776.873	26°28'35.26"	85°05'22.03"	8/12/98
R13A	473.260	778.808	26°28'35.40"	85°05'08.58"	8/12/98
R18	466.895	778.208	26°28'28.89"	85°06'08.61"	8/12/98
R16	463.342	777.912	26°28'26.01"	85°05'37.37"	8/12/98

STATION	ELEVATION	CHORD BEARING	LENGTH
L-1	494,308.00	781,220.50	
L-2	478,782.16	781,772.93	
L-3	478,383.13	780,233.43	
L-4	474,833.30	780,963.41	
L-5	469,010.00	777,465.00	
L-6	465,500.00	774,450.00	
L-7	460,350.00	785,480.00	



NDS 5391 C 1984
LEE CO. AL 6



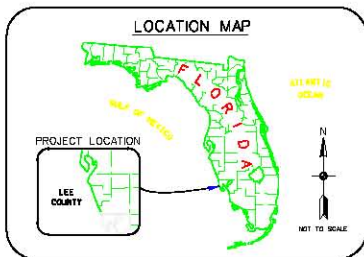
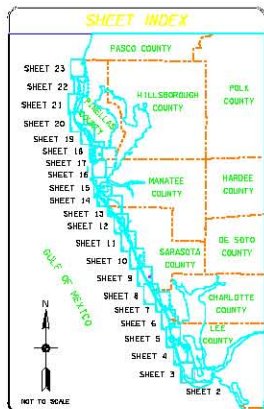
NOTES:
1. REFER TO SHEET 1 FOR NOTES.

SEA SYSTEMS CORPORATION
3405 N.W. 27th AVE.
FORDHAM BEACH, FLORIDA 33066
DEPARTMENT OF THE ARMY
JACKSONVILLE DISTRICT, CORPS OF ENGINEERS
JACKSONVILLE, FLORIDA

INTRACASTAL WATERWAY
CALOOSAHATCHEE RIVER TO ANCLOTE RIVER
PROJECT CONDITION SURVEY
9-FOOT PROJECT
CUT L-1 THROUGH CUT P-41
PLAN VIEW

DATE: 10/1/98	BY: R.C.K.	INSTRUMENT NO.:
DATE: 10/1/98	BY: R.C.K.	DATE: 10/1/98
SCALE: AS SHOWN	DATE: 10/1/98	SHEET 2 OF 23

REVISIONS				
NO.	SYMBOL	DESCRIPTION	DATE	APPROVED



U.S.M.C. CENTERLINE CONTROL

STATION	EASTING	NORTHING
L-7	451,890.00	785,400.00
L-8	451,180.00	785,430.00
L-9	449,760.00	785,510.00
L-11	450,394.70	775,440.40

ADS TO NAVIGATION

ADN NO.	ADN TO	ADN FROM	ADN DATE	ADN TYPE	ADN DATE
R06	444,189	807,367	26°33'17.49"	82°16'14.51"	8/12/98
R05	445,883	807,188	26°33'15.52"	82°16'17.99"	8/12/98
R04	445,211	808,377	26°33'07.00"	82°16'03.24"	8/12/98
R03	445,881	803,281	26°33'31.04"	82°09'55.82"	8/12/98
R02	447,573	801,017	26°32'14.64"	82°09'37.87"	8/12/98
R01	443,188	800,850	26°33'15.98"	82°09'41.72"	8/12/98
R04	448,597	798,258	26°31'54.26"	82°09'24.87"	8/12/98
R03	449,171	797,051	26°31'35.36"	82°09'16.32"	8/12/98
R02	450,461	795,730	26°31'25.40"	82°09'08.90"	8/12/98
R01	450,171	795,892	26°31'21.53"	82°09'08.53"	8/12/98
R00	450,459	794,100	26°31'16.11"	82°09'09.48"	8/12/98
R08	451,019	790,306	26°30'29.93"	82°08'55.19"	8/12/98
R06	451,515	786,002	26°29'45.37"	82°08'53.67"	8/12/98
R04	450,168	783,346	26°29'23.61"	82°08'00.47"	8/12/98
V POLE	450,357	783,825	26°29'24.47"	82°07'47.13"	8/12/98
E POLE	456,395	783,389	26°28'20.15"	82°07'53.88"	8/12/98
G33	458,401	782,350	26°28'15.81"	82°07'37.85"	8/12/98

PINE ISLAND SOUND

GULF INTRACOASTAL WATERWAY

MATCH LINE SHEET 2 - STA. 3+50 CUT L-7

OSTER CREEK

HARD WORKING BAYOU

SANIBEL ISLAND

WULFERT KEYS



NOTES:
1. REFER TO SHEET 1 FOR NOTES.

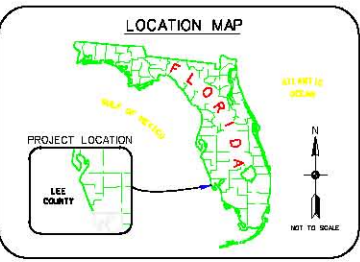
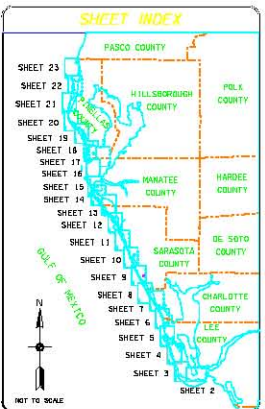
SEA SYSTEMS CORPORATION
3486 N.W. 27th AVE.
POMPAHO BEACH, FLORIDA 33068
DEPARTMENT OF THE ARMY
JACKSONVILLE DISTRICT, CORPS OF ENGINEERS
JACKSONVILLE, FLORIDA

INTRACOASTAL WATERWAY
CALOOSAHATCHEE RIVER TO ANCLOTE RIVER
PROJECT CONDITION SURVEY
9-FOOT PROJECT
CUT L-1 THROUGH CUT P-41
PLAN VIEW

DATE	BY	REV. No.	DESCRIPTION
10/1/98	D.J.M.	1	ISSUE FOR CONSTRUCTION

D.O. FILE NO. 41-37. 687

REVISIONS				
NO.	SYMBOL	DESCRIPTION	DATE	APPROVED



STATION TO	PLANT COORDINATES	SURVEY	LENGTH	DATE
0+00	840,800	26°38'48.28"	62°13'12.28"	9/13/98
R06A	840,480	26°38'45.65"	62°13'08.29"	9/13/98
R06	835,114	26°38'31.71"	62°12'51.49"	9/13/98
R04	836,009	26°38'05.30"	62°12'41.26"	9/13/98
R03	836,475	26°38'05.53"	62°12'44.43"	9/13/98
R02	835,238	26°37'43.49"	62°12'21.49"	9/13/98
R00	830,545	26°37'06.33"	62°12'00.49"	9/13/98
R01	830,458	26°37'06.02"	62°12'23.86"	9/13/98
G08A	828,338	26°38'45.01"	62°12'15.86"	9/13/98
G08	825,987	26°38'31.67"	62°12'08.80"	9/13/98
R08	825,400	26°38'05.05"	62°11'55.10"	9/13/98
R06	821,360	26°38'45.37"	62°11'40.47"	9/13/98
G09	821,200	26°38'24.41"	62°11'43.19"	9/13/98
R04	817,451	26°34'57.29"	62°11'15.66"	9/13/98
G03	815,013	26°34'53.19"	62°11'06.88"	9/13/98
R02	811,468	26°34'09.04"	62°10'56.38"	9/13/98

G.L.W.R. CENTERLINE CONTROL		
L. I. STATION	R. I. I.C. STATION	LENGTH
L-11	826,200.41	821,226.30
L-12	825,283.25	830,445.19
L-13	825,018.35	834,205.81
L-15	830,837.41	838,244.04
L-16	828,033.30	840,820.70

PART ISLAND
COVE KEY
COON KEY

LITTLE WOOD KEY

PINE ISLAND SOUND

GULF INTRACOASTAL WATERWAY
AZ 158°47'40"
CUT L-12

MATCH LINE SHEET 5 - STA. 8+90 CUT L-16

AZ 147°22'36"
CUT L-15

AZ 157°48'35"
CUT L-14

AZ 172°18'05"
CUT L-13

STA. 100+00.00 CUT L-12
STA. 0+00 CUT L-13

STA. 39+94.08 CUT L-13
STA. 0+00 CUT L-14

STA. 28+94.18 CUT L-14
STA. 0+00 CUT L-15

STA. 60+78.78 CUT L-15
STA. 0+00 CUT L-16

APPROXIMATE LOCATION OF TIDE STAFF
NOS 5391 & 1981
NOS 5488F 1978

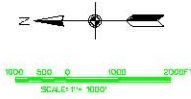
FOSTER POINT
FOSTER BAY

NORTH CAPTIVA ISLAND

PEJUAN POINT
LACOSTA ISLAND

CAPTIVA PASS

GULF OF MEXICO



NOTES:
1. REFER TO SHEET 1 FOR NOTES.

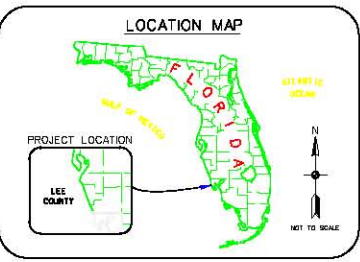
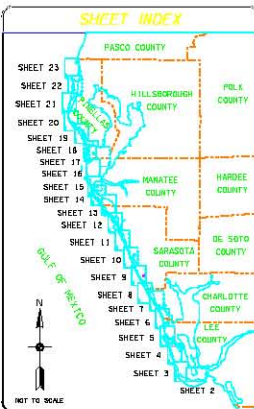
SEA SYSTEMS CORPORATION
3405 N.W. 27th AVE.
POMPAHO BEACH, FLORIDA 33068
DEPARTMENT OF THE ARMY
JACKSONVILLE DISTRICT, CORPS OF ENGINEERS
JACKSONVILLE, FLORIDA

INTRACOASTAL WATERWAY
CALOOSAHATCHEE RIVER TO ANCLOTE RIVER
PROJECT CONDITION SURVEY
9-FOOT PROJECT
CUT L-1 THROUGH CUT P-41
PLAN VIEW

SCALE: AS SHOWN	DATE: OCT 1998	SHEET: 4 OF 23
INVT. No. 4	DRAWING No. 1	
D.J.M.	R.C.K.	

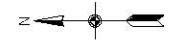
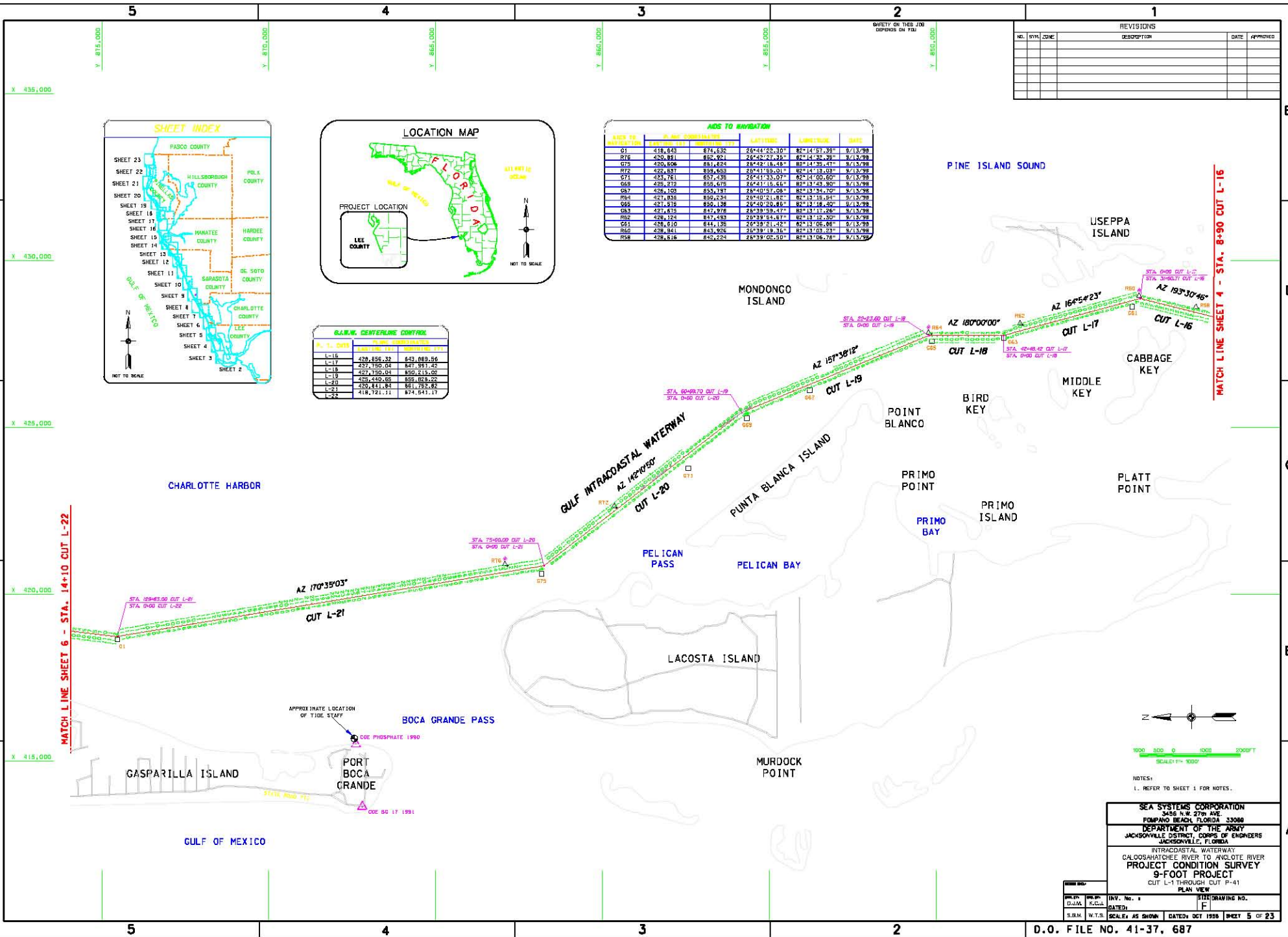
D.O. FILE NO. 41-37. 687

REVISIONS				
NO.	SYMBOL	DESCRIPTION	DATE	APPROVED



STATION	ELEVATION	COORDINATES	DATE
G1	418.603	874,032	25°44'20.30"
R76	420.891	882,821	26°42'42.35"
G75	420.606	881,824	26°42'15.48"
R72	423.437	898,453	25°41'19.01"
G71	423.781	857,436	26°41'33.07"
G69	426.272	858,478	26°41'15.65"
G83	426.100	853,737	26°40'57.09"
R64	423,856	850,234	26°40'21.82"
G65	421,516	850,138	26°40'25.86"
G83	421,635	842,876	26°39'59.47"
R62	426,124	847,483	26°39'54.87"
G61	426,610	844,136	26°39'21.42"
R60	426,861	843,826	26°39'19.36"
R58	426,816	842,224	26°39'02.50"

STATION	ELEVATION	COORDINATES
L-16	426,896.32	843,889.86
L-17	427,756.04	847,951.42
L-18	427,750.04	850,215.02
L-20	426,440.86	868,868.22
L-21	418,411.84	861,732.82
L-22	418,721.11	874,541.17



1000 500 0 500 1000 2000 FT
SCALE: 1" = 1000'

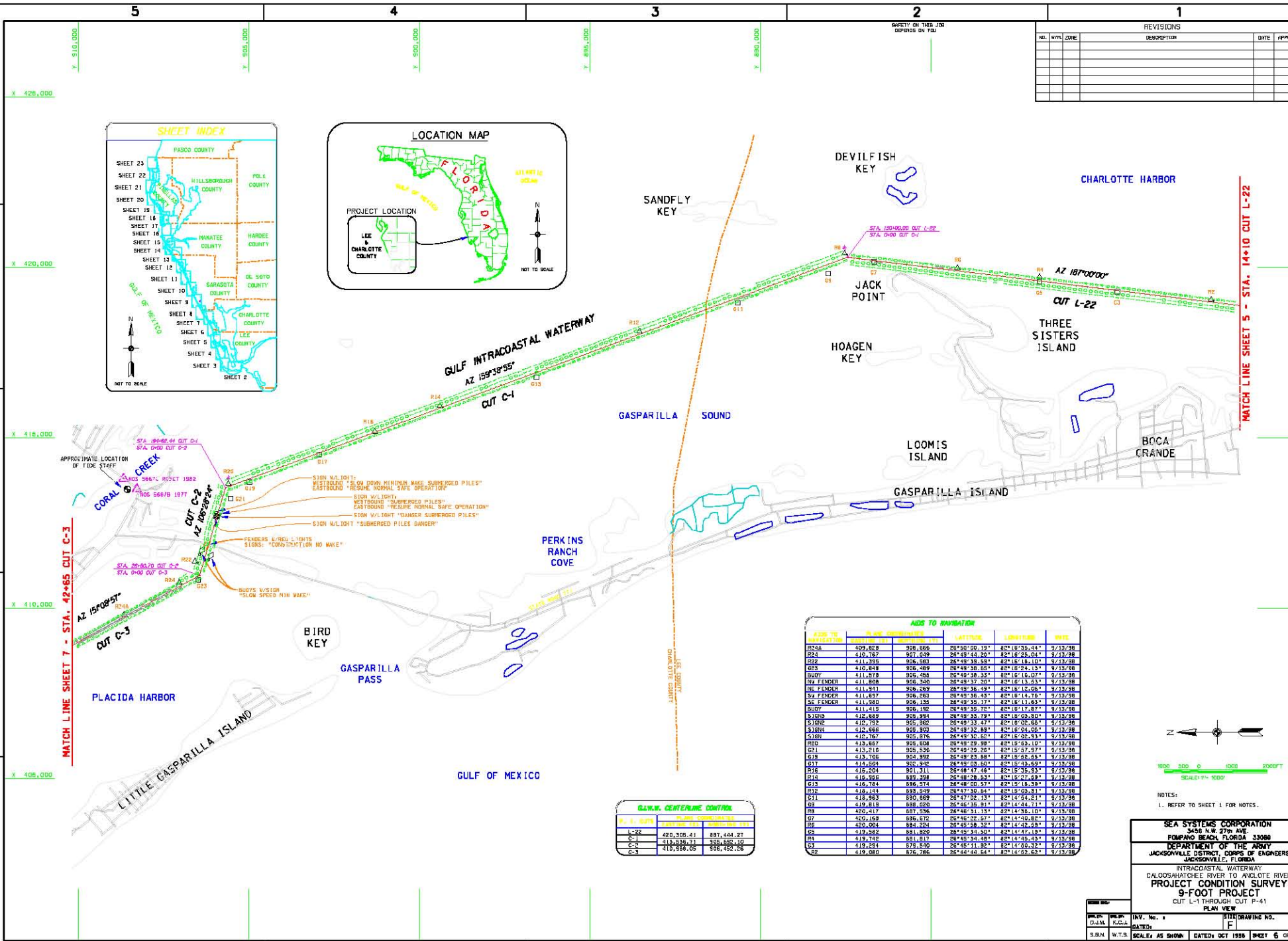
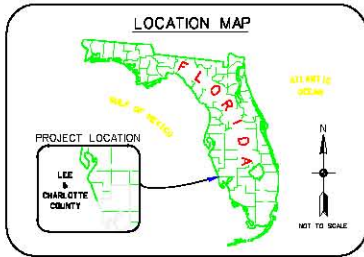
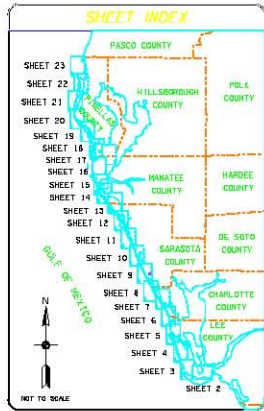
NOTES:
1. REFER TO SHEET 1 FOR NOTES.

SEA SYSTEMS CORPORATION
3485 N.W. 27th AVE.
POMPANO BEACH, FLORIDA 33068
DEPARTMENT OF THE ARMY
JACKSONVILLE DISTRICT, CORPS OF ENGINEERS
JACKSONVILLE, FLORIDA

FILED	REVISED	INVT. No. 1	DATE
D.M.A.	R.C.K.	F	
S.B.M.	W.T.S.	SCALE AS SHOWN	DATE: OCT 1988

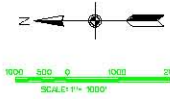
INTRACASTAL WATERWAY
CALOOSAHATCHEE RIVER TO ANCLOTE RIVER
PROJECT CONDITION SURVEY
9-FOOT PROJECT
CUT L-1 THROUGH CUT P-41
PLAN VIEW

REVISIONS				
NO.	SYMBOL	DESCRIPTION	DATE	APPROVED



STATION	CHORD BEARING	CHORD DISTANCE	CHORD BEARING	CHORD DISTANCE	CHORD BEARING	CHORD DISTANCE	CHORD BEARING	CHORD DISTANCE
R204	099.820	908.686	28°50'00.19"	81°18'35.44"	9/13/98			
R24	410.767	907.049	28°49'44.20"	82°18'25.04"	9/13/98			
Q22	411.719	906.963	28°49'39.98"	82°18'18.10"	9/13/98			
Q25	410.848	906.489	28°49'35.26"	82°18'24.13"	9/13/98			
BUDY	411.870	906.465	28°49'38.33"	82°18'16.07"	9/13/98			
SW FENDER	411.809	906.740	28°49'37.20"	82°18'13.63"	9/13/98			
NE FENDER	411.841	906.269	28°49'36.49"	82°18'12.05"	9/13/98			
SW FENDER	411.837	906.983	28°49'36.43"	82°18'14.19"	9/13/98			
SE FENDER	411.900	906.135	28°49'35.77"	82°18'11.63"	9/13/98			
BUDY	411.418	906.192	28°49'35.72"	82°18'17.87"	9/13/98			
SIGN	412.889	905.994	28°49'35.79"	82°18'09.80"	9/13/98			
S100	410.740	905.369	28°49'33.47"	82°18'09.56"	9/13/98			
S102	410.466	905.303	28°49'32.83"	82°18'04.05"	9/13/98			
SIGN	410.767	905.816	28°49'32.82"	82°18'05.53"	9/13/98			
R20	413.457	905.008	28°49'29.98"	82°18'03.10"	9/13/98			
Q21	413.218	905.535	28°49'29.26"	82°18'07.57"	9/13/98			
Q19	413.705	904.991	28°49'23.88"	82°18'08.59"	9/13/98			
Q17	414.500	902.945	28°49'05.00"	82°18'43.65"	9/13/98			
R16	416.204	901.311	28°48'47.46"	82°18'35.53"	9/13/98			
R14	416.935	899.798	28°48'28.78"	82°18'27.69"	9/13/98			
Q13	416.784	886.574	28°48'00.57"	82°18'18.39"	9/13/98			
R12	416.444	889.849	28°47'50.84"	82°18'09.31"	9/13/98			
Q11	416.963	890.659	28°47'52.97"	82°18'04.21"	9/13/98			
Q9	419.810	888.020	28°45'35.81"	82°14'44.11"	9/13/98			
R8	420.416	887.936	28°48'31.33"	82°14'36.10"	9/13/98			
Q7	420.165	896.370	28°48'02.97"	82°14'40.83"	9/13/98			
R6	420.003	884.224	28°45'58.32"	82°14'42.63"	9/13/98			
Q5	419.582	881.890	28°45'34.20"	82°14'41.19"	9/13/98			
R4	419.143	881.813	28°45'44.88"	82°14'40.33"	9/13/98			
Q3	419.254	879.840	28°45'11.32"	82°14'40.33"	9/13/98			
Q2	419.580	876.786	28°44'44.54"	82°14'43.63"	9/13/98			

G.I.W. CENTERLINE CONTROL		
LINE	STATION	CHORD BEARING
L-22	420.308-41	887.484-27
C-1	413.438-21	109.682-10
C-2	410.958-05	906.452-26
C-3		



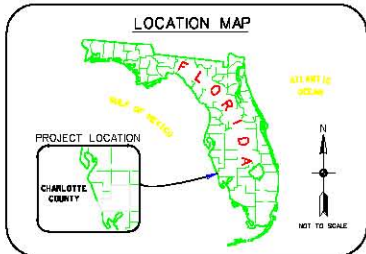
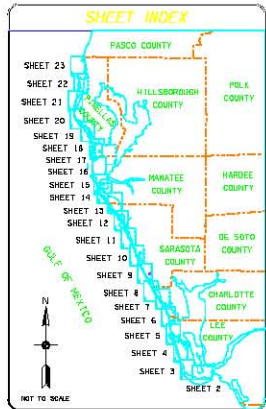
NOTES:
1. REFER TO SHEET 1 FOR NOTES.

SEA SYSTEMS CORPORATION
3405 N.W. 27th AVE.
FONTPANE BEACH, FLORIDA 33066
DEPARTMENT OF THE ARMY
JACKSONVILLE DISTRICT, CORPS OF ENGINEERS
JACKSONVILLE, FLORIDA

INTRACASTAL WATERWAY
CALOOSAHATCHEE RIVER TO ANGLADE RIVER
PROJECT CONDITION SURVEY
9-FOOT PROJECT
CUT L-1 THROUGH CUT P-41
PLAN VIEW

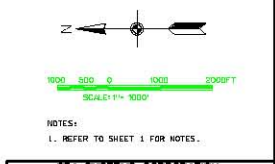
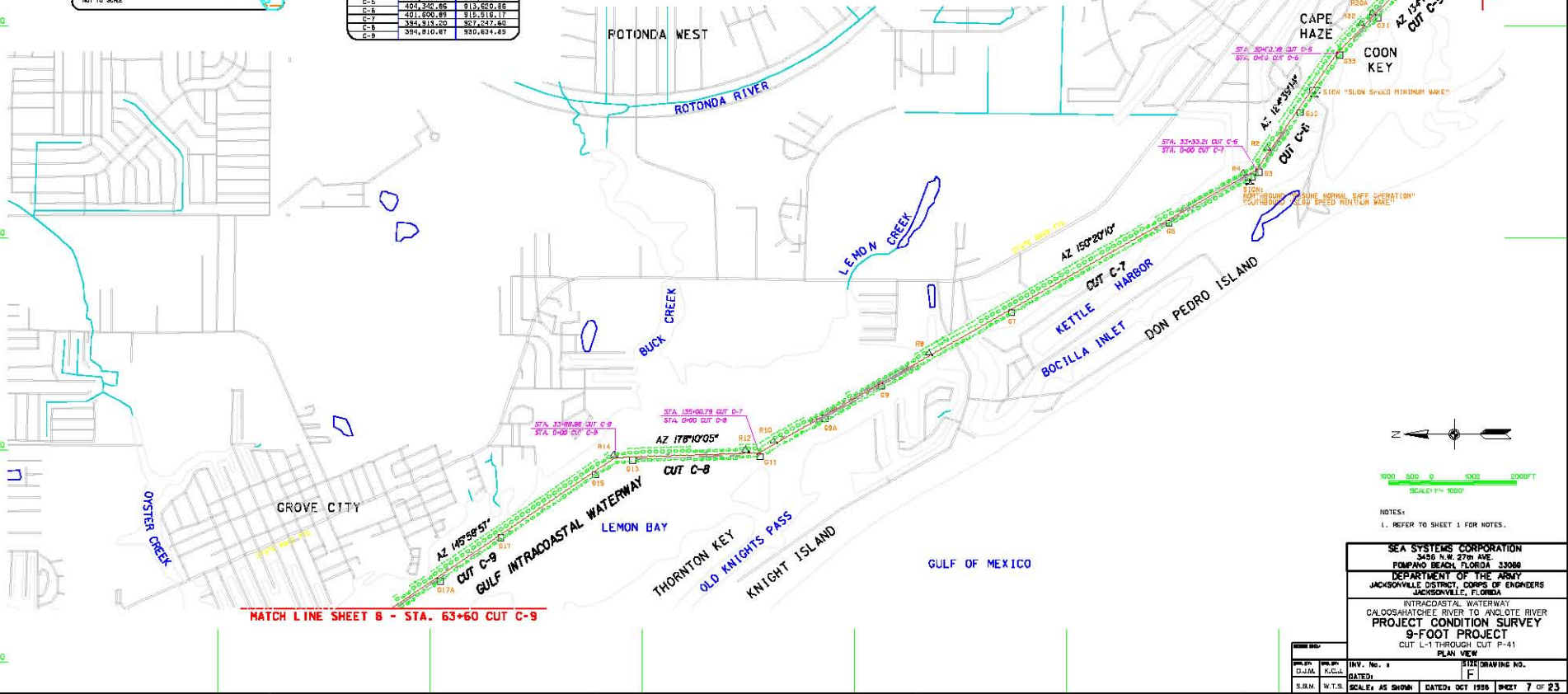
DATE	BY	CHKD	APP'D	REV. No.	DESCRIPTION

REVISIONS				
NO.	SYMBOL	DESCRIPTION	DATE	APPROVED



G.A.W. CENTERLINE CONTROL			
P.C.	P.T.	T.P.	E.T.
C-3	408,669.76	810,620.62	
C-4	406,485.46	811,925.70	
C-5	403,252.85	813,620.88	
C-6	401,500.88	815,315.17	
C-8	394,815.20	827,047.60	
C-9	394,810.87	830,834.63	

ADS TO NAVIGATION					
ADIS TO	P. NO.	COMPLETION	SURVEY	LENGTH	DATE
G17A	351,696	834,760	26°54'18.20"	82°18'54.15"	9/13/98
G17	352,335	833,332	26°54'04.08"	82°19'42.85"	9/13/98
G16	354,404	831,103	26°53'42.04"	82°19'26.35"	9/13/98
G14	354,690	826,611	26°53'31.78"	82°19'23.37"	9/13/98
G13	354,751	830,224	26°53'53.55"	82°19'22.49"	9/13/98
R12	352,007	827,863	26°53'01.00"	82°19'18.59"	9/13/98
G11	354,636	823,225	26°53'03.65"	82°19'21.55"	9/13/98
R10	355,215	826,803	26°53'00.47"	82°19'17.27"	9/13/98
B9A	352,738	825,636	26°52'48.53"	82°19'11.45"	9/13/98
D9	352,491	824,310	26°52'36.41"	82°19'03.17"	9/13/98
R8	357,268	823,241	26°52'24.25"	82°18'54.28"	9/13/98
G7	348,227	821,300	26°52'06.05"	82°18'43.65"	9/13/98
D6	401,395	811,835	26°51'19.31"	82°18'20.08"	9/13/98
R4	401,634	815,638	26°51'11.03"	82°18'07.19"	9/13/98
S10N	401,364	815,069	26°51'09.36"	82°18'09.65"	9/13/98
D3	401,545	815,461	26°51'01.30"	82°18'07.08"	9/13/98
R2	402,120	816,871	26°51'05.43"	82°18'00.71"	9/13/98
C8	403,544	814,382	26°50'51.74"	82°17'51.69"	9/13/98
S10N	403,416	814,128	26°50'54.54"	82°17'46.37"	9/13/98
D2	404,308	813,866	26°50'48.80"	82°17'38.03"	9/13/98
R5	405,087	813,056	26°50'43.56"	82°17'29.11"	9/13/98
D50A	405,314	812,750	26°50'40.93"	82°17'25.38"	9/13/98
D1	405,177	812,860	26°50'39.84"	82°17'26.69"	9/13/98
R9	405,232	811,950	26°50'32.10"	82°17'15.27"	9/13/98
C2	405,440	811,485	26°50'21.74"	82°17'12.91"	9/13/98
R8	405,980	811,368	26°50'27.18"	82°17'06.95"	9/13/98
S10N	407,071	811,362	26°50'28.83"	82°17'05.95"	9/13/98
R5	408,711	810,101	26°50'09.32"	82°16'47.82"	9/13/98
D2	408,282	810,812	26°50'22.06"	82°16'53.23"	9/13/98
D5	409,646	810,267	26°50'16.56"	82°16'46.20"	9/13/98

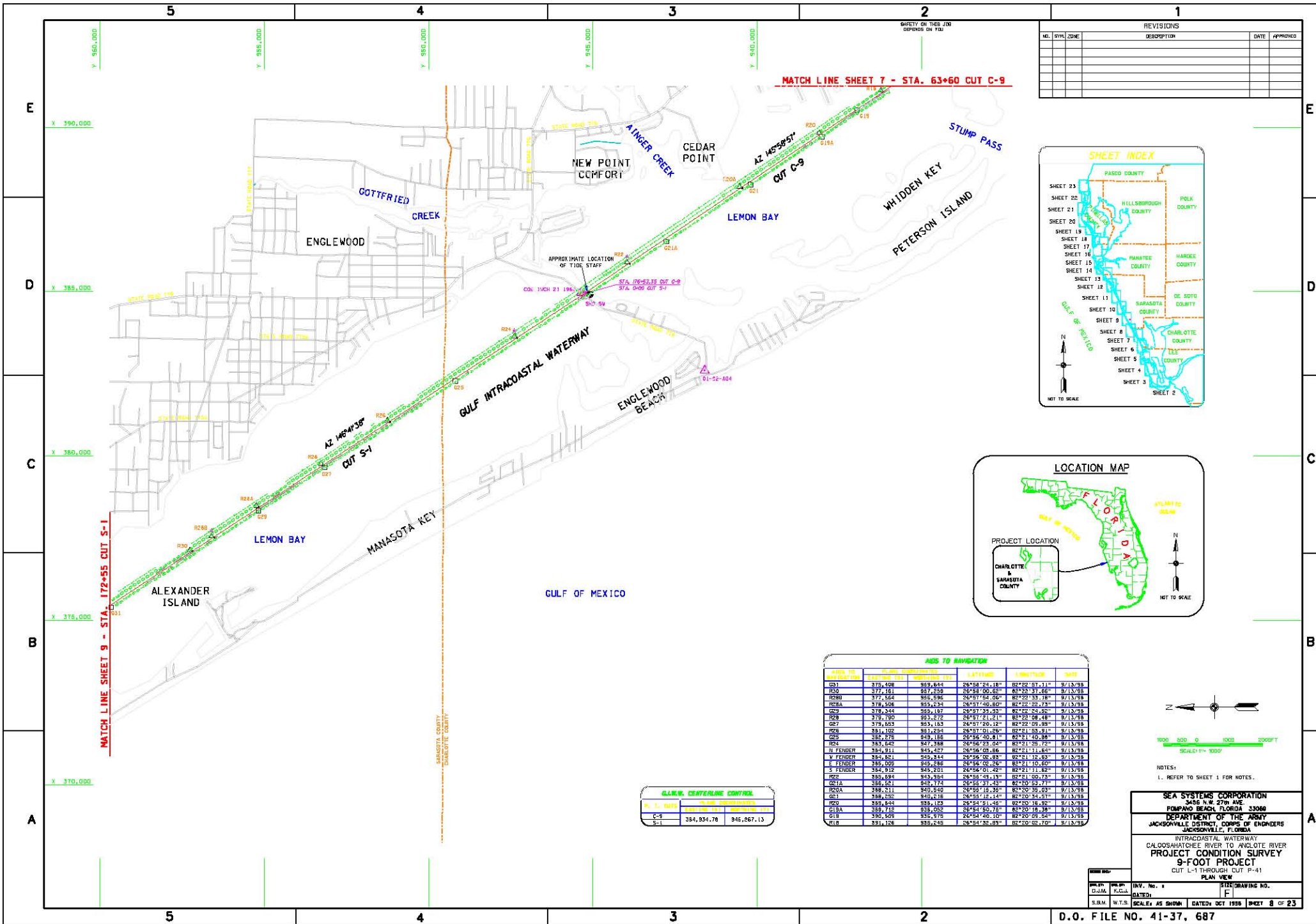


NOTES:
1. REFER TO SHEET 1 FOR NOTES.

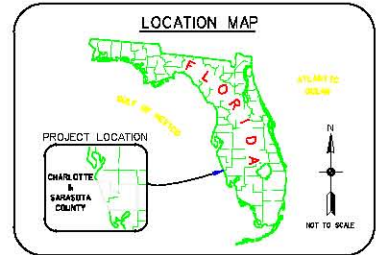
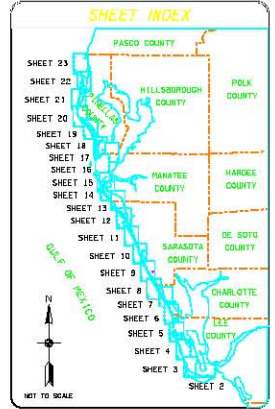
SEA SYSTEMS CORPORATION
3405 N.W. 27th AVE.
POMPAN0 BEACH, FLORIDA 33060
DEPARTMENT OF THE ARMY
JACKSONVILLE DISTRICT, CORPS OF ENGINEERS
JACKSONVILLE, FLORIDA

INTRACASTAL WATERWAY
CALOOSAHATCHEE RIVER TO ANCLOTE RIVER
PROJECT CONDITION SURVEY
9-FOOT PROJECT
CUT L-1 THROUGH CUT P-41
PLAN VIEW

FILED BY: D.J.M.	REV. No.:	DATE:	DRAWING No.:
S.B.M. W.T.S.	SCALE: AS SHOWN	DATE: OCT 1998	SHEET 7 OF 23



REVISIONS				
NO.	SYMBOL	DESCRIPTION	DATE	APPROVED

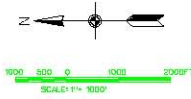


MATCH LINE SHEET 9 - STA. 172+55 CUT S-1

MATCH LINE SHEET 7 - STA. 63+60 CUT C-9

G.L.W. CENTERLINE CONTROL			
STATION	Easting	Northing	POINT
C-9	384,934.78	945,667.13	
S-1			

ADD TO NAVIGATION					
POINT NO.	STATION	Easting	Northing	POINT	DATE
CG1	378.408	859.644	26°54'24.18"	B2°22'51.11"	8/13/98
CG2	377.161	867.259	26°54'00.80"	B2°22'31.66"	8/13/98
CG3	377.554	855.596	26°51'54.06"	B2°20'33.18"	8/13/98
CG4	378.508	855.234	26°51'40.80"	B2°22'32.73"	8/13/98
CG5	378.344	855.167	26°51'25.53"	B2°22'34.62"	8/13/98
CG6	378.790	855.072	26°51'21.21"	B2°22'08.48"	8/13/98
CG7	378.653	853.183	26°51'26.12"	B2°22'05.95"	8/13/98
CG8	381.302	861.254	26°51'01.98"	B2°21'03.91"	8/13/98
CG9	382.278	849.188	26°54'40.81"	B2°21'40.88"	8/13/98
CG10	383.542	947.388	26°56'23.04"	B2°21'25.72"	8/13/98
V FENDER	384.821	843.477	26°56'02.86"	B2°21'11.64"	8/13/98
V FENDER	384.821	845.314	26°56'02.83"	B2°21'12.63"	8/13/98
E FENDER	385.009	845.586	26°54'02.26"	B2°21'10.60"	8/13/98
S FENDER	384.912	845.201	26°54'01.42"	B2°21'11.82"	8/13/98
CG11	385.894	843.584	26°55'41.13"	B2°21'00.73"	8/13/98
CG12	386.521	845.774	26°55'31.33"	B2°20'52.71"	8/13/98
CG13	388.211	845.540	26°55'19.35"	B2°20'35.03"	8/13/98
CG14	388.232	840.216	26°55'12.14"	B2°20'34.51"	8/13/98
CG15	389.840	838.185	26°54'51.40"	B2°20'18.52"	8/13/98
CG16	389.712	833.052	26°54'50.21"	B2°20'18.38"	8/13/98
CG17	390.508	836.978	26°54'40.10"	B2°20'09.54"	8/13/98
CG18	391.128	836.245	26°54'35.83"	B2°20'02.10"	8/13/98



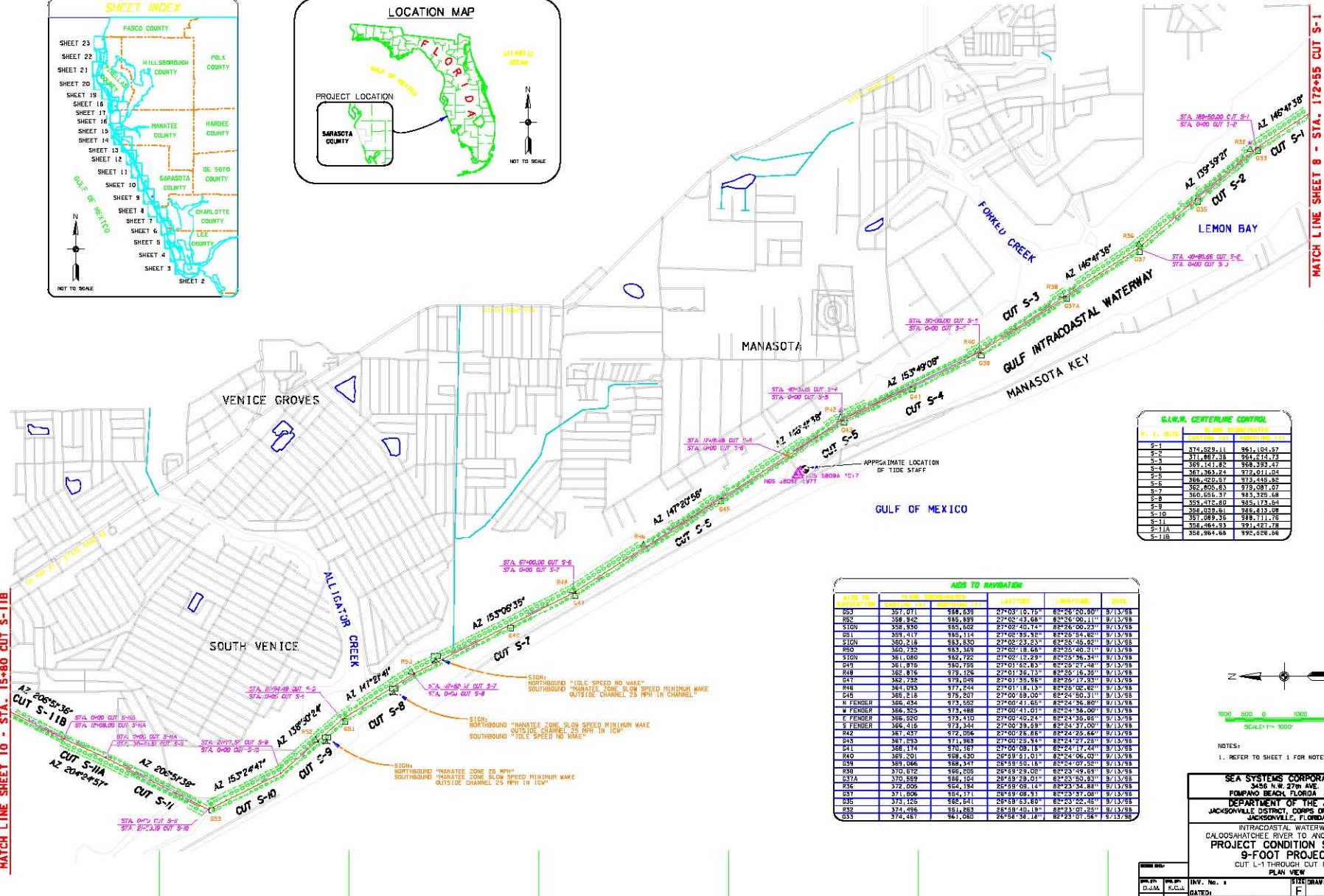
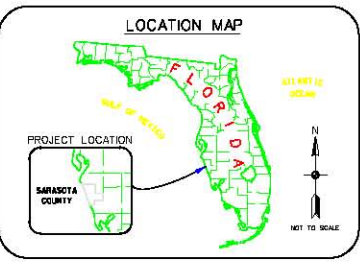
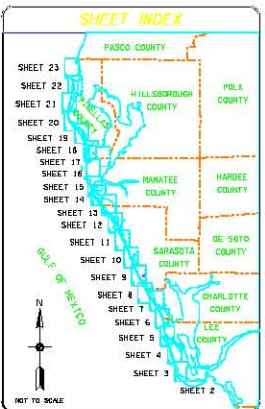
NOTES:
1. REFER TO SHEET 1 FOR NOTES.

SEA SYSTEMS CORPORATION
 3405 N.W. 27th AVE.
 FORT MYERS, FLORIDA 33908
DEPARTMENT OF THE ARMY
 JACKSONVILLE DISTRICT, CORPS OF ENGINEERS
 JACKSONVILLE, FLORIDA

INTRACASTAL WATERWAY
 CALOOSAHATCHEE RIVER TO ANCLOTE RIVER
 PROJECT CONDITION SURVEY
9-FOOT PROJECT
 CUT L-1 THROUGH CUT P-41
 PLAN VIEW

DATE	BY	CHKD.	APP'D.	INSTRUMENT NO.
10/13/98	D.J.M.	R.C.K.	[Signature]	F
DATE	BY	CHKD.	APP'D.	INSTRUMENT NO.
10/13/98	S.B.M.	W.T.S.	[Signature]	F

REVISIONS				
NO.	SYMBOL	DESCRIPTION	DATE	APPROVED



STATION	N. LINE COORDINATES	E. LINE COORDINATES
S-1	374,829.11	961,104.97
S-2	371,487.38	961,110.73
S-3	369,141.63	960,393.67
S-4	367,363.23	972,011.04
S-5	366,033.17	973,449.86
S-6	362,805.63	979,087.97
S-7	360,656.37	983,329.58
S-8	359,472.67	985,123.84
S-9	358,039.61	986,615.08
S-10	357,089.35	988,111.76
S-11A	356,464.53	991,027.78
S-11B	356,364.64	992,628.68

STATION	LATITUDE	LONGITUDE	ELEVATION		DATE
			VERTICAL	CHARTER	
053	357,071	988,638	27+03'10.75"	82+26'20.90"	8/13/95
054	358,342	985,448	27+07'43.68"	82+26'06.11"	8/13/95
055	358,830	985,622	27+02'40.74"	82+26'00.23"	8/13/95
056	359,419	985,714	27+06'39.91"	82+26'54.82"	8/13/95
057	360,218	983,800	27+02'23.23"	82+26'58.25"	8/13/95
058	360,733	983,359	27+02'18.68"	82+25'40.21"	8/13/95
059	361,080	982,722	27+02'12.29"	82+25'36.34"	8/13/95
060	361,876	980,756	27+01'52.80"	82+25'47.48"	8/13/95
061	362,876	979,326	27+01'35.73"	82+25'16.35"	8/13/95
062	362,728	979,695	27+01'35.98"	82+25'17.33"	8/13/95
063	364,093	977,204	27+01'18.15"	82+25'02.82"	8/13/95
064	365,218	975,207	27+00'58.00"	82+24'50.31"	8/13/95
W FENDER	366,434	973,592	27+00'41.63"	82+24'36.80"	8/13/95
E FENDER	366,325	973,488	27+00'41.01"	82+24'38.00"	8/13/95
S FENDER	366,920	975,410	27+00'40.24"	82+24'36.85"	8/13/95
R42	366,416	973,344	27+00'33.69"	82+24'37.00"	8/13/95
R43	367,437	972,056	27+00'28.88"	82+24'23.66"	8/13/95
R44	367,993	971,988	27+00'26.94"	82+24'27.25"	8/13/95
R45	368,174	971,187	27+00'06.11"	82+24'11.24"	8/13/95
R46	369,201	968,930	26+58'51.01"	82+24'06.03"	8/13/95
R47	369,066	968,247	26+58'50.18"	82+24'07.32"	8/13/95
R48	370,172	966,509	26+59'23.05"	82+23'49.65"	8/13/95
R49	370,589	966,104	26+59'28.01"	82+23'50.83"	8/13/95
R50	372,005	964,354	26+58'08.12"	82+23'34.88"	8/13/95
R51	371,806	964,371	26+58'08.51"	82+23'37.01"	8/13/95
R52	373,105	965,241	26+58'53.80"	82+23'22.45"	8/13/95
R53	374,496	964,883	26+58'48.18"	82+23'01.25"	8/13/95
R54	374,487	964,080	26+58'38.18"	82+23'07.58"	8/13/95

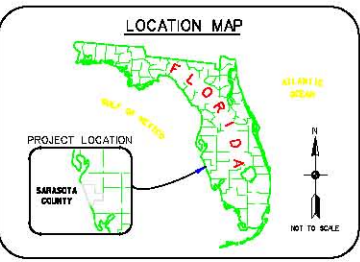
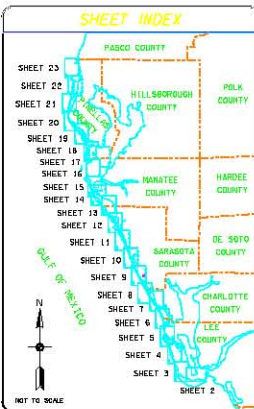


NOTES:
1. REFER TO SHEET 1 FOR NOTES.

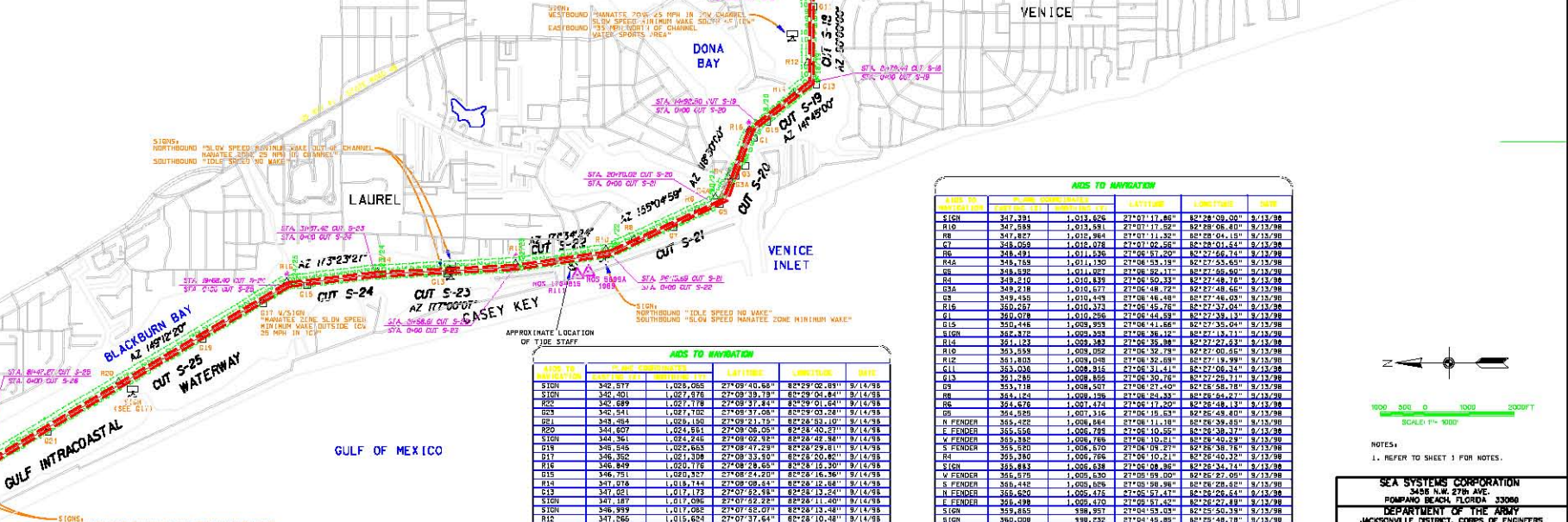
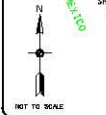
SEA SYSTEMS CORPORATION
3405 N.W. 27th AVE.
FONTS BEACH, FLORIDA 33068
DEPARTMENT OF THE ARMY
JACKSONVILLE DISTRICT, CORPS OF ENGINEERS
JACKSONVILLE, FLORIDA
INTRACOASTAL WATERWAY
CALOOSAHATCHEE RIVER TO ANCLOTE RIVER
PROJECT CONDITION SURVEY
9-FOOT PROJECT
CUT L-1 THROUGH CUT P-41
PLAN VIEW

SCALE: 1" = 1000'	DATE: 11/13/95	INSTRUMENT: F	DRAWING NO.:
S.R.M. W.T.S.	SCALE: AS SHOWN	DATE: OCT 1998	SHEET 9 OF 23

REVISIONS				
NO.	SYMBOL	DESCRIPTION	DATE	APPROVED

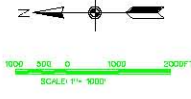


STATION	ELEVATION	DATE
S-11B	359,928.61	8/14/98
S-12	359,937.98	8/14/98
S-13	357,484.11	1/03/2013
S-14	356,812.28	1/04/2002
S-15	356,812.28	1/04/2002
S-16A	356,830.71	1/03/2013
S-16	356,831.68	1/03/2013
S-17	354,860.37	1/07/2010
S-18	353,111.83	1/03/2013
S-19	351,832.48	1/03/2013
S-20	350,408.49	1/01/2012
S-21	348,538.35	1/01/2012
S-22	347,487.32	1/03/2013
S-23	347,170.39	1/03/2013
S-24	347,030.18	1/01/2012
S-25	346,178.30	1/03/2013
S-26	346,608.22	1/02/2013



NO.	SYMBOL	DESCRIPTION	DATE	APPROVED	
S10N	342,577	1,829,068	27°09'40.85"	82°29'02.89"	9/14/98
S10N	342,001	1,827,878	27°08'38.78"	82°29'04.84"	9/14/98
R20	342,889	1,827,178	27°09'37.84"	82°29'01.64"	9/14/98
R25	342,541	1,827,102	27°09'37.05"	82°29'03.28"	9/14/98
R21	343,684	1,828,150	27°09'21.73"	82°28'52.05"	9/14/98
R20	344,607	1,824,851	27°09'06.05"	82°28'40.27"	9/14/98
S10N	344,361	1,824,246	27°09'02.92"	82°28'42.98"	9/14/98
R18	346,546	1,822,863	27°09'17.92"	82°28'29.11"	9/14/98
R20	346,352	1,821,308	27°09'33.50"	82°28'20.84"	9/14/98
R16	346,849	1,820,174	27°08'28.65"	82°28'15.30"	9/14/98
R15	346,711	1,820,321	27°08'24.20"	82°28'16.36"	9/14/98
S10N	347,018	1,818,744	27°08'09.44"	82°28'12.48"	9/14/98
R19	347,021	1,817,174	27°07'23.48"	82°28'13.24"	9/14/98
S10N	347,357	1,817,036	27°07'22.22"	82°28'11.40"	9/14/98
S10N	346,999	1,817,085	27°07'22.07"	82°28'13.48"	9/14/98
R12	347,555	1,815,824	27°07'37.64"	82°28'10.48"	9/14/98
NE FENDER	347,385	1,814,631	27°07'27.82"	82°28'09.11"	9/13/98
NW FENDER	347,263	1,814,627	27°07'27.77"	82°28'10.46"	9/13/98
SE FENDER	347,517	1,814,481	27°07'28.15"	82°28'08.76"	9/13/98
SW FENDER	347,288	1,814,481	27°07'26.13"	82°28'10.17"	9/13/98

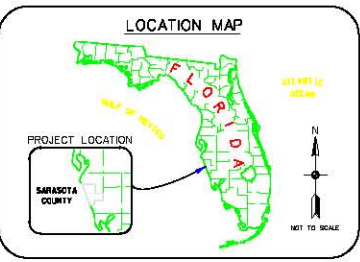
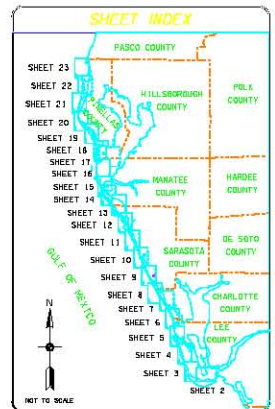
NO.	SYMBOL	DESCRIPTION	DATE	APPROVED	
S10N	347,881	1,812,826	27°07'17.82"	82°28'09.00"	9/13/98
R10	347,889	1,812,981	27°07'17.32"	82°28'06.80"	9/13/98
RE	347,827	1,812,964	27°07'11.32"	82°28'04.15"	9/13/98
CT	348,059	1,812,078	27°07'02.86"	82°28'01.64"	9/13/98
RE	348,491	1,811,426	27°06'51.60"	82°27'56.74"	9/13/98
R4A	348,788	1,811,130	27°06'53.19"	82°27'53.65"	9/13/98
SE	349,492	1,811,421	27°06'56.11"	82°27'56.80"	9/13/98
R4	349,210	1,810,830	27°06'50.33"	82°27'48.76"	9/13/98
R3A	349,218	1,810,677	27°06'48.72"	82°27'48.66"	9/13/98
CR	349,850	1,810,420	27°06'48.48"	82°27'48.03"	9/13/98
R15	350,627	1,810,372	27°06'45.76"	82°27'57.04"	9/13/98
G1	349,078	1,810,266	27°06'44.93"	82°27'58.13"	9/13/98
E15	350,246	1,809,871	27°06'44.66"	82°27'55.04"	9/13/98
S10N	349,372	1,809,303	27°06'38.12"	82°27'53.71"	9/13/98
R18	349,123	1,809,283	27°06'35.98"	82°27'52.63"	9/13/98
R10	349,859	1,809,192	27°06'32.78"	82°27'50.65"	9/13/98
R12	349,803	1,809,048	27°06'32.68"	82°27'49.99"	9/13/98
G11	353,036	1,808,815	27°06'31.41"	82°27'56.34"	9/13/98
E15	349,480	1,808,856	27°06'30.78"	82°27'50.11"	9/13/98
ES	353,718	1,808,507	27°06'27.40"	82°28'58.78"	9/13/98
R6	349,184	1,808,198	27°06'18.40"	82°28'56.77"	9/13/98
RE	349,676	1,807,474	27°06'17.20"	82°28'48.31"	9/13/98
RS	344,526	1,807,768	27°06'15.63"	82°28'45.80"	9/13/98
R6	349,184	1,808,198	27°06'18.40"	82°28'56.77"	9/13/98
N FENDER	349,442	1,805,826	27°06'10.21"	82°28'40.32"	9/13/98
V FENDER	349,380	1,805,768	27°06'10.21"	82°28'40.32"	9/13/98
S FENDER	349,442	1,805,826	27°06'10.21"	82°28'40.32"	9/13/98
W FENDER	349,380	1,805,768	27°06'10.21"	82°28'40.32"	9/13/98
S10N	349,883	1,805,648	27°06'08.86"	82°28'34.74"	9/13/98
R6	349,179	1,805,510	27°06'08.21"	82°28'32.75"	9/13/98
N FENDER	349,442	1,805,826	27°06'08.86"	82°28'34.74"	9/13/98
W FENDER	349,380	1,805,768	27°06'08.21"	82°28'32.75"	9/13/98
S10N	349,883	1,805,648	27°06'08.86"	82°28'34.74"	9/13/98
R6	349,179	1,805,510	27°06'08.21"	82°28'32.75"	9/13/98
NW FENDER	349,442	1,805,826	27°06'08.86"	82°28'34.74"	9/13/98
SW FENDER	349,380	1,805,768	27°06'08.21"	82°28'32.75"	9/13/98
SE FENDER	349,442	1,805,826	27°06'08.86"	82°28'34.74"	9/13/98
SW FENDER	349,380	1,805,768	27°06'08.21"	82°28'32.75"	9/13/98



SEA SYSTEMS CORPORATION
 3486 N.W. 27th AVE.
 POMPANO BEACH, FLORIDA 33068
 DEPARTMENT OF THE ARMY
 JACKSONVILLE DISTRICT, CORPS OF ENGINEERS
 JACKSONVILLE, FLORIDA

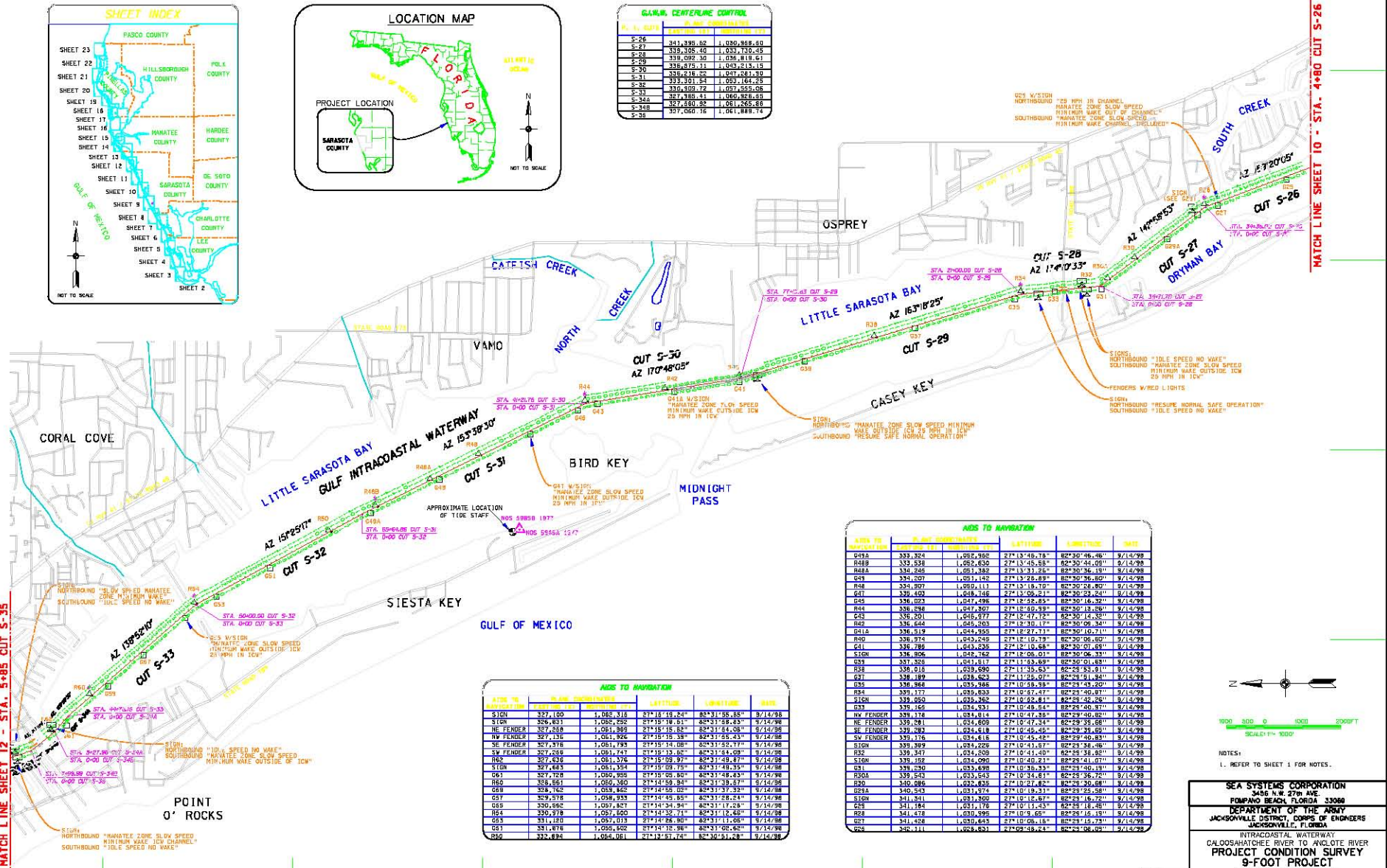
INTRACASTAL WATERWAY
 CALOOSAHATCHEE RIVER TO ANJULOTTE RIVER
 PROJECT CONDITION SURVEY
 9-FOOT PROJECT
 CUT-1 THROUGH CUT P-41
 PLAN VIEW

DATE	BY	CHK'D	APP'D
D.W.N. R.C.D.			
DATE	BY	CHK'D	APP'D
S.J.M. W.T.S.			



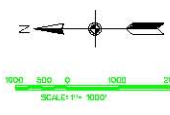
STATION	ELEVATION	DATE
S-24	341,339.62	1,030,888.45
S-25	339,325.45	1,033,130.45
S-26	339,095.35	1,036,819.45
S-27	336,875.11	1,043,213.15
S-28	336,218.25	1,047,883.90
S-29	332,501.84	1,053,164.25
S-30	336,409.72	1,057,695.06
S-31	327,769.43	1,060,928.43
S-32	327,850.82	1,061,265.86
S-33	327,060.16	1,061,888.74

NO.	SYMBOL	DESCRIPTION	DATE	APPROVED



LINE NO.	POINT	ELEVATION	DATE
ST10	327,100	1,068,316	2/18/10
ST11	326,831	1,068,252	2/18/10
NW FENDER	327,258	1,061,869	2/18/10
NE FENDER	327,136	1,061,826	2/18/10
SE FENDER	327,518	1,061,783	2/18/10
SW FENDER	327,858	1,061,741	2/18/10
R62	327,436	1,061,576	2/18/10
ST16	327,643	1,061,354	2/18/10
G61	327,728	1,060,958	2/18/10
M62	328,261	1,060,360	2/18/10
G62	328,762	1,059,842	2/18/10
G63	329,378	1,059,333	2/18/10
G64	330,062	1,059,821	2/18/10
G65	331,182	1,059,013	2/18/10
G66	331,878	1,058,402	2/18/10
G67	332,824	1,058,061	2/18/10

LINE NO.	POINT	ELEVATION	DATE
R63A	333,324	1,082,908	2/13/10
R63B	333,538	1,082,630	2/13/10
R63A	334,265	1,083,182	2/13/10
G69	334,027	1,083,192	2/13/10
R64	334,807	1,083,111	2/13/10
G71	335,469	1,083,108	2/13/10
R65	336,023	1,084,095	2/13/10
R64	336,284	1,084,307	2/13/10
R60	336,374	1,083,235	2/13/10
G71	336,789	1,083,235	2/13/10
ST18	336,806	1,084,762	2/13/10
G71	337,811	1,084,891	2/13/10
R68	338,018	1,083,890	2/13/10
G71	338,189	1,083,862	2/13/10
G68	338,984	1,083,968	2/13/10
R64	339,177	1,083,833	2/13/10
ST19	339,260	1,083,826	2/13/10
R63	339,355	1,084,531	2/13/10
NW FENDER	339,378	1,084,614	2/13/10
NE FENDER	339,281	1,084,609	2/13/10
SE FENDER	339,282	1,084,618	2/13/10
SW FENDER	339,176	1,084,618	2/13/10
ST19	339,389	1,084,226	2/13/10
ST18	339,347	1,084,209	2/13/10
ST18	339,352	1,084,209	2/13/10
G71	339,290	1,083,498	2/13/10
R60A	339,543	1,083,543	2/13/10
M62	340,086	1,083,826	2/13/10
G72A	340,543	1,083,874	2/13/10
ST19	341,321	1,083,302	2/13/10
G72	341,184	1,083,116	2/13/10
R68	341,478	1,083,095	2/13/10
G71	341,428	1,083,643	2/13/10
G68	342,111	1,083,631	2/13/10



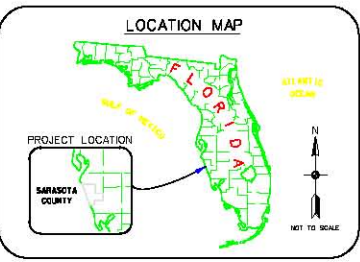
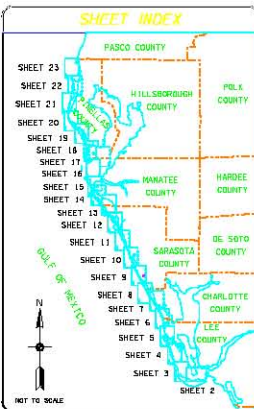
NOTES:
1. REFER TO SHEET 1 FOR NOTES.

SEA SYSTEMS CORPORATION
3406 N.W. 27th AVE.
FORDPAN BEACH, FLORIDA 33066
DEPARTMENT OF THE ARMY
JACKSONVILLE DISTRICT, CORPS OF ENGINEERS
JACKSONVILLE, FLORIDA

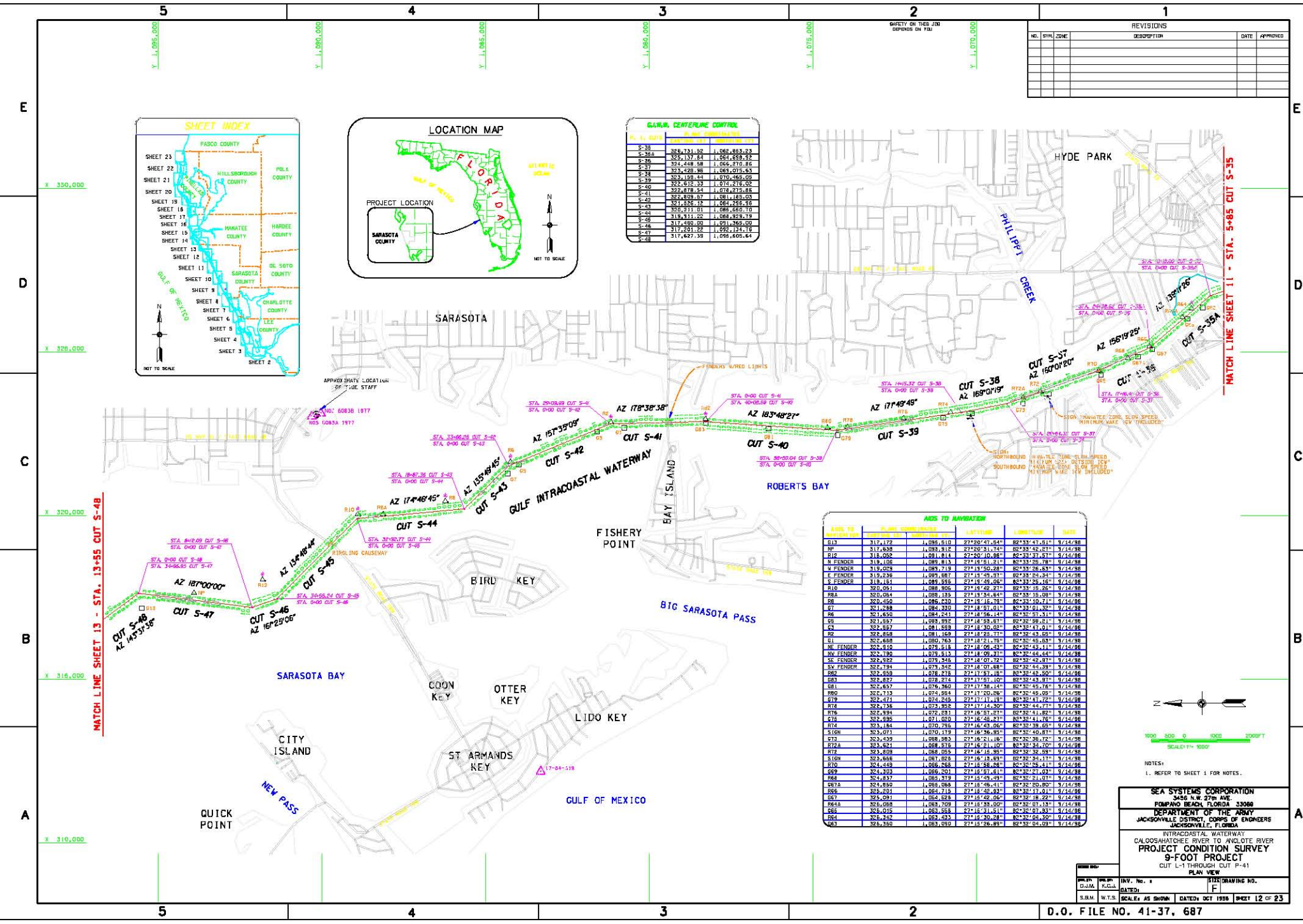
INTRACASTAL WATERWAY
CALOOSAHATCHEE RIVER TO ANCLOTE RIVER
PROJECT CONDITION SURVEY
9-FOOT PROJECT
CUT L-1 THROUGH CUT P-41
PLAN VIEW

SCALE: AS SHOWN	DATE: 11/10/10	DRAWING NO. 41-37-10
SHEET 11 OF 23	DATE: 11/10/10	DRAWING NO. 41-37-10

REVISIONS		DATE	APPROVED
NO.	SYMBOL	DESCRIPTION	



STA.	ELEV.	P. NO.	COMPARISON
S-31	326,131.50	1,065,883.23	
S-35	325,137.84	1,065,899.32	
S-36	324,448.58	1,065,870.86	
S-37	323,428.98	1,065,875.63	
S-38	323,139.44	1,070,466.09	
S-39	322,618.33	1,074,276.02	
S-40	322,878.54	1,078,275.86	
S-41	322,828.87	1,081,185.03	
S-42	321,826.12	1,084,236.96	
S-43	320,211.01	1,088,490.70	
S-44	319,311.20	1,088,428.73	
S-45	317,450.00	1,091,365.00	
S-46	317,201.22	1,092,134.76	
S-48	317,4927.38	1,095,405.64	



LINE NO.	POINT	P. NO.	COMPARISON	ELEVATION	LENGTH	DATE
G13	317,172	1,095,610	27*20'41.54"	82*33'47.51"	9/14/98	
NP	317,838	1,093,912	27*20'31.74"	82*33'42.81"	9/14/98	
B12	316,082	1,091,811	27*20'10.86"	82*33'37.57"	9/14/98	
CR	319,106	1,093,813	27*19'51.21"	82*33'29.78"	9/14/98	
M FENDER	319,028	1,093,719	27*19'50.28"	82*33'26.63"	9/14/98	
E FENDER	319,236	1,093,687	27*19'50.37"	82*33'24.34"	9/14/98	
S FENDER	319,161	1,093,559	27*19'48.08"	82*33'24.66"	9/14/98	
R10	320,051	1,088,905	27*18'42.27"	82*33'15.26"	9/14/98	
RE	320,084	1,089,135	27*18'43.84"	82*33'16.08"	9/14/98	
RR	320,350	1,089,630	27*18'15.78"	82*33'10.71"	9/14/98	
G7	320,288	1,084,330	27*18'07.01"	82*33'01.32"	9/14/98	
RE	321,650	1,084,241	27*18'06.81"	82*32'51.31"	9/14/98	
RS	321,587	1,093,932	27*18'53.87"	82*32'58.21"	9/14/98	
R2	322,668	1,081,169	27*17'23.77"	82*32'43.55"	9/14/98	
G1	322,888	1,080,763	27*18'21.78"	82*32'45.63"	9/14/98	
NE FENDER	322,410	1,074,518	27*18'06.30"	82*32'43.11"	9/14/98	
NW FENDER	322,190	1,073,613	27*18'09.37"	82*32'44.45"	9/14/98	
SE FENDER	322,382	1,073,545	27*18'07.72"	82*32'42.87"	9/14/98	
SW FENDER	322,198	1,073,342	27*18'07.88"	82*32'44.38"	9/14/98	
BB7	322,808	1,074,818	27*17'51.88"	82*32'42.50"	9/14/98	
BB3	322,827	1,074,214	27*17'47.10"	82*32'43.87"	9/14/98	
BB4	322,857	1,074,360	27*17'48.08"	82*32'45.16"	9/14/98	
BB0	322,713	1,074,554	27*17'20.86"	82*32'45.05"	9/14/98	
G19	322,471	1,074,245	27*17'17.10"	82*32'41.72"	9/14/98	
R16	322,236	1,074,892	27*17'16.30"	82*32'44.27"	9/14/98	
R16	322,394	1,074,831	27*16'51.87"	82*32'41.82"	9/14/98	
G18	322,395	1,071,820	27*16'46.27"	82*32'44.76"	9/14/98	
R10	323,184	1,070,735	27*16'43.06"	82*32'39.55"	9/14/98	
SIGN	323,071	1,070,119	27*16'36.99"	82*32'40.87"	9/14/98	
G19	323,339	1,068,983	27*16'21.16"	82*32'36.72"	9/14/98	
R12A	323,821	1,068,818	27*16'21.10"	82*32'34.70"	9/14/98	
R12	323,808	1,068,055	27*16'18.38"	82*32'32.99"	9/14/98	
SIGN	323,688	1,061,828	27*16'18.80"	82*32'34.11"	9/14/98	
R10	324,449	1,068,858	27*16'58.88"	82*32'28.41"	9/14/98	
SG9	324,303	1,069,201	27*16'57.61"	82*32'27.02"	9/14/98	
RE	324,332	1,068,133	27*16'55.08"	82*32'21.07"	9/14/98	
RE2A	324,850	1,065,088	27*16'46.41"	82*32'20.80"	9/14/98	
RE6	325,201	1,064,715	27*16'42.93"	82*32'17.01"	9/14/98	
RE7	325,091	1,064,428	27*16'42.00"	82*32'18.22"	9/14/98	
RE4A	325,088	1,063,709	27*16'53.00"	82*32'07.13"	9/14/98	
RE5	325,015	1,063,558	27*16'31.51"	82*32'01.93"	9/14/98	
RE6	325,342	1,063,433	27*16'30.27"	82*32'04.30"	9/14/98	
RE3	325,350	1,063,030	27*16'26.89"	82*32'04.03"	9/14/98	

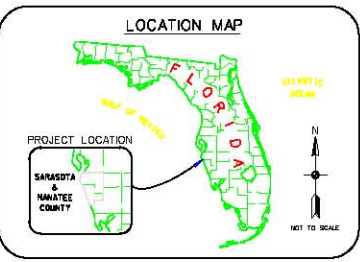
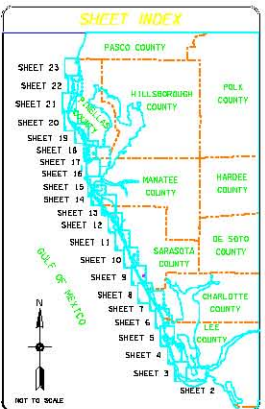
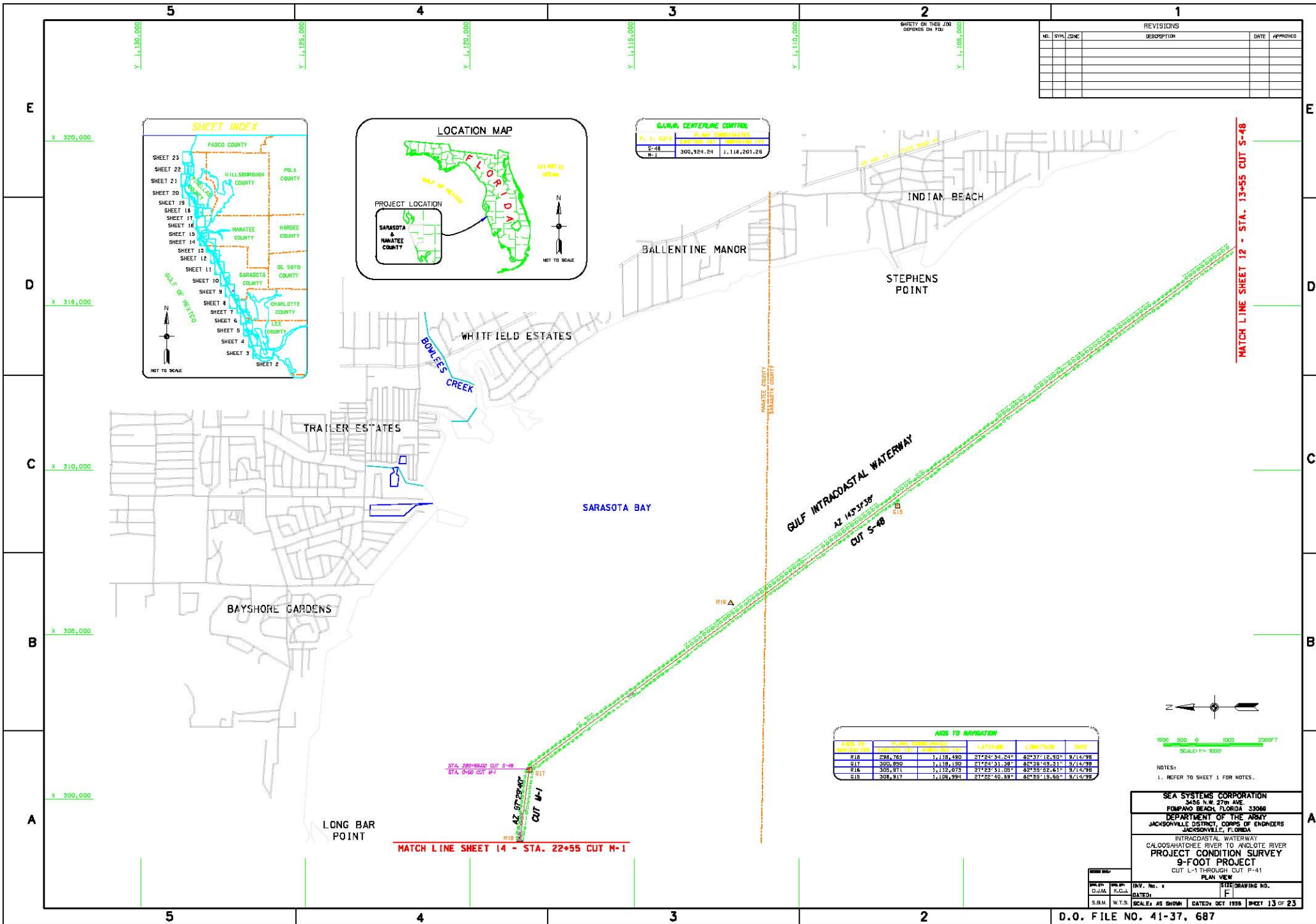
SEA SYSTEMS CORPORATION
 3485 N.W. 27th AVE.
 FORT MYERS, FLORIDA 33908
 DEPARTMENT OF THE ARMY
 JACKSONVILLE DISTRICT, ENGINEERS OF ENGINEERS
 JACKSONVILLE, FLORIDA

INTRACOASTAL WATERWAY
 CALOOSAHATCHEE RIVER TO ANGLOTE RIVER
 PROJECT CONDITION SURVEY
 9-FOOT PROJECT
 CUT L-1 THROUGH CUT P-41
 PLAN VIEW

SCALE: 1" = 1000'

DATE: 11/11/00
 DRAWING NO. 41-37-687

SCALE: AS SHOWN
 DATE: OCT 1998
 SHEET 12 OF 23



G.A.M. CENTERLINE CONTROL

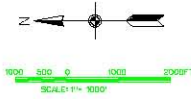
S-48	300,924.24	1,118,201.28
M-1		

ADS TO NAVIGATION

LINE TO NAVIGATED	STATIONING	ELEVATION	LATITUDE	CORRECTION	DATE
R18	298,785	1,118,480	27°24'34.24"	82°37'16.90"	3/14/98
R17	300,890	1,118,190	27°20'31.38"	82°38'49.31"	3/14/98
R16	305,811	1,115,073	27°23'31.05"	82°35'22.61"	3/14/98
R15	308,917	1,108,981	27°28'49.83"	82°35'19.80"	3/14/98

REVISIONS

NO.	SYMBOL	ZONE	DESCRIPTION	DATE	APPROVED



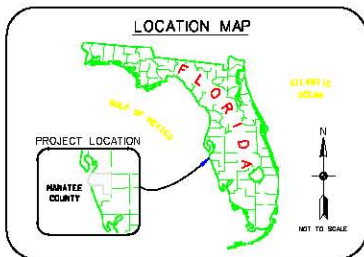
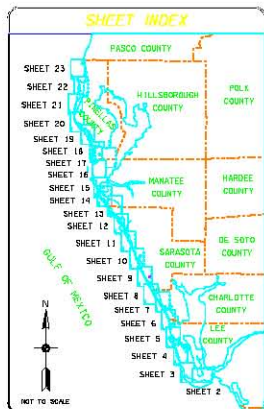
SEA SYSTEMS CORPORATION
 3485 N.W. 27th AVE.
 FORT LAUDERDALE, FLORIDA 33308
DEPARTMENT OF THE ARMY
 JACKSONVILLE DISTRICT, CORPS OF ENGINEERS
 JACKSONVILLE, FLORIDA

INTRACOASTAL WATERWAY
 CALOOSAHATCHEE RIVER TO ANCLOTE RIVER
 PROJECT CONDITION SURVEY
 9-FOOT PROJECT
 CUT L-1 THROUGH CUT P-41
 PLAN VIEW

FILE NO.		REV. No. 1	DRAWING NO.
DESIGNED BY	D.J.M.	DRAWN BY	R.C.K.
CHECKED BY		DATE	
S.B.M. W.T.S.		SCALE AS SHOWN	DATE: OCT 1998

SHEET 13 OF 23

REVISIONS				
NO.	SYMBOL	DESCRIPTION	DATE	APPROVED



AZS TO NAVIGATION	S.B.E. COORDINATES				DATE
	LINE NO.	LINE TYPE	LINE NUMBER	LINE NAME	
LP	218,131	1,134,212	27°27'16.55"	E2°41'02.65"	9/14/98
R46	218,659	1,134,841	27°27'10.15"	E2°40'56.95"	9/14/98
G45	218,577	1,134,355	27°27'10.71"	E2°40'57.85"	9/14/98
R44	219,561	1,132,281	27°26'50.81"	E2°40'48.25"	9/14/98
G43	219,485	1,132,306	27°26'50.05"	E2°40'47.65"	9/14/98
R42	280,172	1,130,928	27°26'36.48"	E2°40'39.95"	9/14/98
G41	280,025	1,130,921	27°26'36.35"	E2°40'41.84"	9/14/98
R40	280,780	1,129,610	27°26'22.44"	E2°40'33.10"	9/14/98
G39	281,089	1,129,586	27°26'13.71"	E2°40'29.63"	9/14/98
R38A	281,210	1,129,570	27°26'12.78"	E2°40'29.23"	9/14/98
R38	281,454	1,121,858	27°26'08.92"	E2°40'29.54"	9/14/98
G37	281,492	1,121,420	27°26'01.79"	E2°40'26.09"	9/14/98
R36	282,125	1,121,666	27°25'58.00"	E2°40'18.04"	9/14/98
R34	283,480	1,125,911	27°25'46.95"	E2°40'02.94"	9/14/98
G35	283,560	1,125,868	27°25'46.85"	E2°40'04.16"	9/14/98
R32	284,928	1,124,720	27°25'39.25"	E2°39'48.80"	9/14/98
G33	284,831	1,124,835	27°25'34.39"	E2°39'47.87"	9/14/98
R30	286,435	1,123,212	27°25'11.38"	E2°39'27.77"	9/14/98
G31	286,533	1,123,214	27°25'20.40"	E2°39'28.60"	9/14/98
R28	287,867	1,122,288	27°25'11.27"	E2°39'14.04"	9/14/98
G29	287,952	1,122,401	27°25'08.17"	E2°39'13.05"	9/14/98
R26	289,820	1,120,859	27°24'59.27"	E2°38'50.13"	9/14/98
G27	289,617	1,120,548	27°24'54.15"	E2°38'51.92"	9/14/98
R24	292,858	1,118,064	27°24'53.81"	E2°38'29.33"	9/14/98
G22	293,324	1,117,714	27°24'56.29"	E2°38'13.23"	9/14/98
R24	293,324	1,117,713	27°24'56.28"	E2°38'13.23"	9/14/98
R21	296,142	1,117,687	27°24'56.14"	E2°38'14.40"	9/14/98
R20	293,950	1,117,638	27°24'55.37"	E2°38'06.28"	9/14/98
G21	298,197	1,117,618	27°24'53.43"	E2°38'06.32"	9/14/98
R23	293,658	1,116,301	27°24'56.42"	E2°38'09.24"	9/14/98

G.L.W. CENTERLINE CONTROL		
LINE	LINE COORDINATES	LINE NAME
M-1	298,471.51	1,118,929.35
M-2	299,408.00	1,117,991.70
M-3	293,524.10	1,117,951.90
M-4	281,551.48	1,127,985.11
M-5	278,498.37	1,124,188.59
M-6		

MATCH LINE SHEET 13 - STA. 22+55 CUT M-1

STA. 20+73.86 CUT M-2

STA. 0+00 CUT M-2

STA. 30+03.38 CUT M-2

STA. 0+00 CUT M-3

STA. 20+00.00 CUT M-3

STA. 0+00 CUT M-4

SARASOTA BAY

GULF INTRACOASTAL WATERWAY
AZ 157°04'00" CUT M-4

SISTER KEYS

MILLAR BAY

LONGBOAT KEY

CUT M-5
AZ 157°04'00"

JEWISH KEY

LONG BEACH

PALMA SOLA BAY

CORTEZ

TIDY ISLAND

PERICO ISLAND

MATCH LINE SHEET 15 - STA. 7+00 CUT M-6



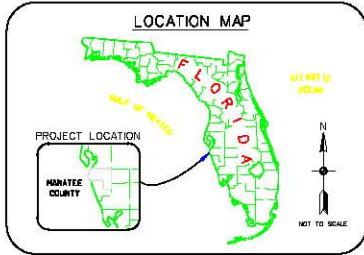
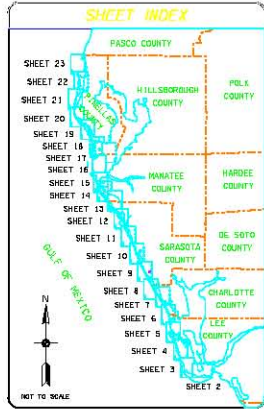
NOTES:
1. REFER TO SHEET 1 FOR NOTES.

SEA SYSTEMS CORPORATION
3485 N.W. 27th AVE.
FORT PUNTA BEACH, FLORIDA 33086
DEPARTMENT OF THE ARMY
JACKSONVILLE DISTRICT, CORPS OF ENGINEERS
JACKSONVILLE, FLORIDA

INTRACOASTAL WATERWAY
CALOOSAHATCHEE RIVER TO ANCLOTE RIVER
PROJECT CONDITION SURVEY
9-FOOT PROJECT
CUT L-1 THROUGH CUT P-41
PLAN VIEW

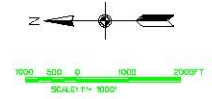
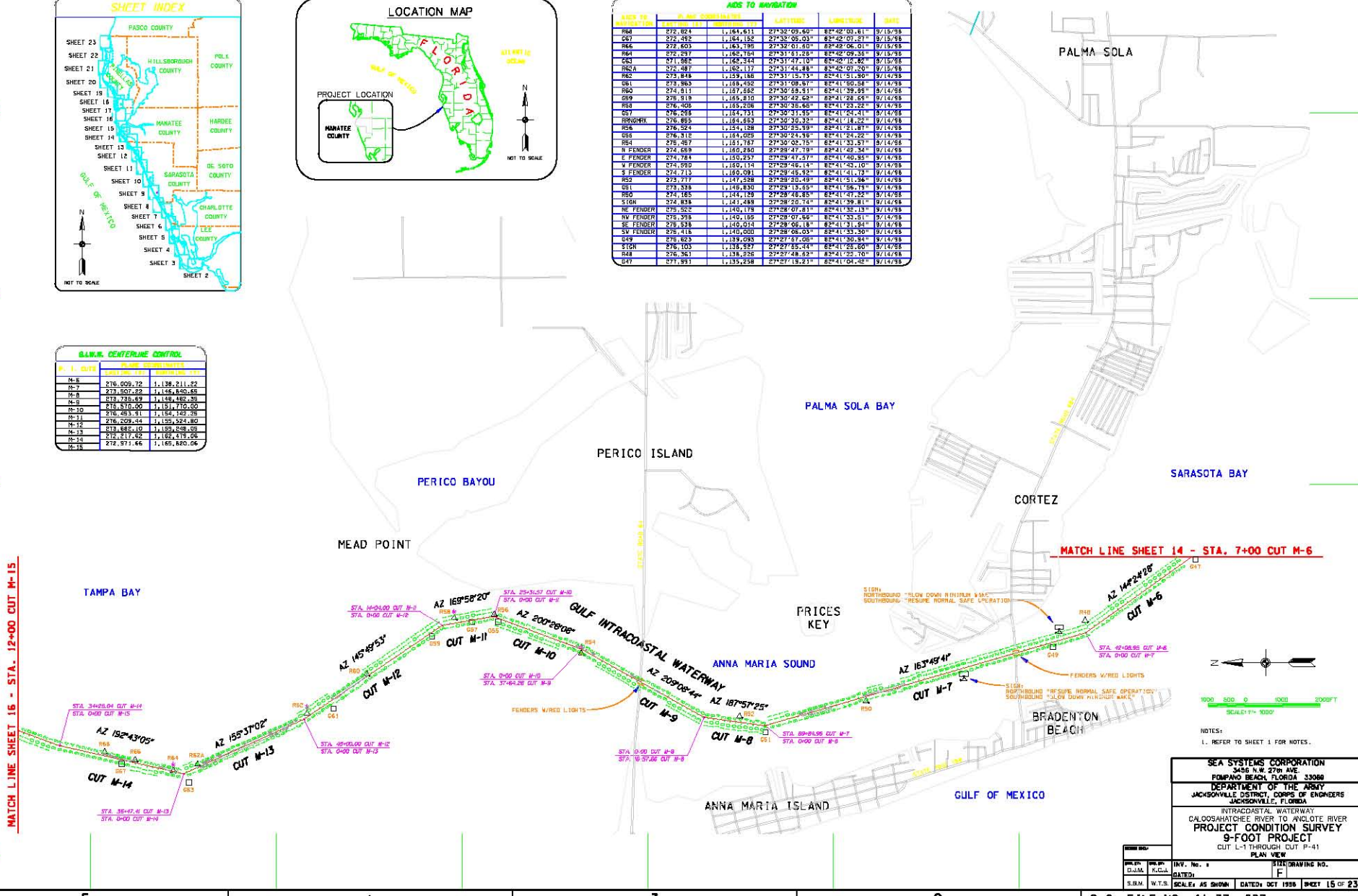
SCALE	DATE	BY	CHKD
D.M.A.	10/19/98	R.C.K.	F
S.B.M. W.T.S.	SCALE AS SHOWN	DATE: OCT 1998	SHEET 14 OF 23

REVISIONS			DATE	APPROVED
NO.	SYMBOL	DESCRIPTION		



STATION	P.C.M.	P.T.M.	DELTA	DELTA	DELTA	DELTA	DELTA
RM4	272,021	1,164,611	27°32'08.80"	82°42'01.61"	9/15/98		
CG7	272,492	1,164,156	27°30'05.03"	82°42'07.27"	9/15/98		
RM6	272,603	1,163,795	27°32'01.50"	82°42'06.01"	9/15/98		
RM4	272,297	1,165,164	27°31'53.25"	82°42'09.16"	9/15/98		
CG3	271,882	1,162,244	27°31'47.10"	82°42'16.82"	9/15/98		
RM2A	272,487	1,162,117	27°31'46.88"	82°42'07.50"	9/15/98		
RM2	272,848	1,159,186	27°31'55.13"	82°41'51.80"	9/14/98		
CG1	273,963	1,168,452	27°31'08.67"	82°41'50.58"	9/14/98		
RM0	274,811	1,167,582	27°30'59.51"	82°41'39.58"	9/14/98		
RM9	276,819	1,165,210	27°30'42.66"	82°41'28.65"	9/14/98		
RM8	276,408	1,165,206	27°30'35.86"	82°41'23.22"	9/14/98		
CG7	276,298	1,164,151	27°30'31.85"	82°41'24.41"	9/14/98		
RM8/WHK	276,895	1,164,893	27°30'30.37"	82°41'18.52"	9/14/98		
RM6	276,524	1,154,198	27°30'25.99"	82°41'18.87"	9/14/98		
CG6	276,312	1,164,005	27°30'14.86"	82°41'22.22"	9/14/98		
RM4	276,457	1,151,767	27°30'02.75"	82°41'31.57"	9/14/98		
F FENDER	274,689	1,160,290	27°28'47.79"	82°41'42.32"	9/14/98		
E FENDER	274,784	1,160,257	27°28'47.77"	82°41'40.55"	9/14/98		
V FENDER	274,690	1,160,114	27°28'46.14"	82°41'45.10"	9/14/98		
S FENDER	274,713	1,160,091	27°28'45.92"	82°41'41.13"	9/14/98		
RM2	273,717	1,157,298	27°28'00.49"	82°41'51.56"	9/14/98		
CG1	273,538	1,146,830	27°29'13.85"	82°41'56.71"	9/14/98		
RM0	274,185	1,144,129	27°28'46.85"	82°41'47.22"	9/14/98		
S SIGN	274,838	1,161,493	27°28'20.74"	82°41'39.81"	9/14/98		
NE FENDER	273,552	1,140,178	27°28'07.81"	82°41'32.13"	9/14/98		
NW FENDER	273,558	1,140,189	27°28'07.66"	82°41'33.51"	9/14/98		
SE FENDER	273,539	1,160,015	27°28'06.18"	82°41'31.86"	9/14/98		
SW FENDER	273,416	1,140,000	27°28'08.03"	82°41'33.30"	9/14/98		
CG7	273,623	1,159,095	27°27'58.06"	82°41'30.32"	9/14/98		
SIGN	276,103	1,158,927	27°27'55.74"	82°41'28.80"	9/14/98		
R48	276,363	1,138,226	27°27'48.82"	82°41'25.70"	9/14/98		
CG7	271,951	1,135,258	27°27'18.21"	82°41'01.42"	9/14/98		

STATION	P.C.M.	P.T.M.	DELTA	DELTA	DELTA	DELTA	DELTA
M-6	276,009.72	1,138,211.22					
M-7	273,507.22	1,145,840.85					
M-8	273,739.49	1,154,482.38					
M-9	275,870.00	1,151,770.00					
M-10	276,093.31	1,164,142.05					
M-11	276,209.44	1,155,524.80					
M-12	273,882.00	1,159,548.05					
M-13	276,217.52	1,162,115.05					
M-14	272,371.44	1,166,840.06					
M-15							

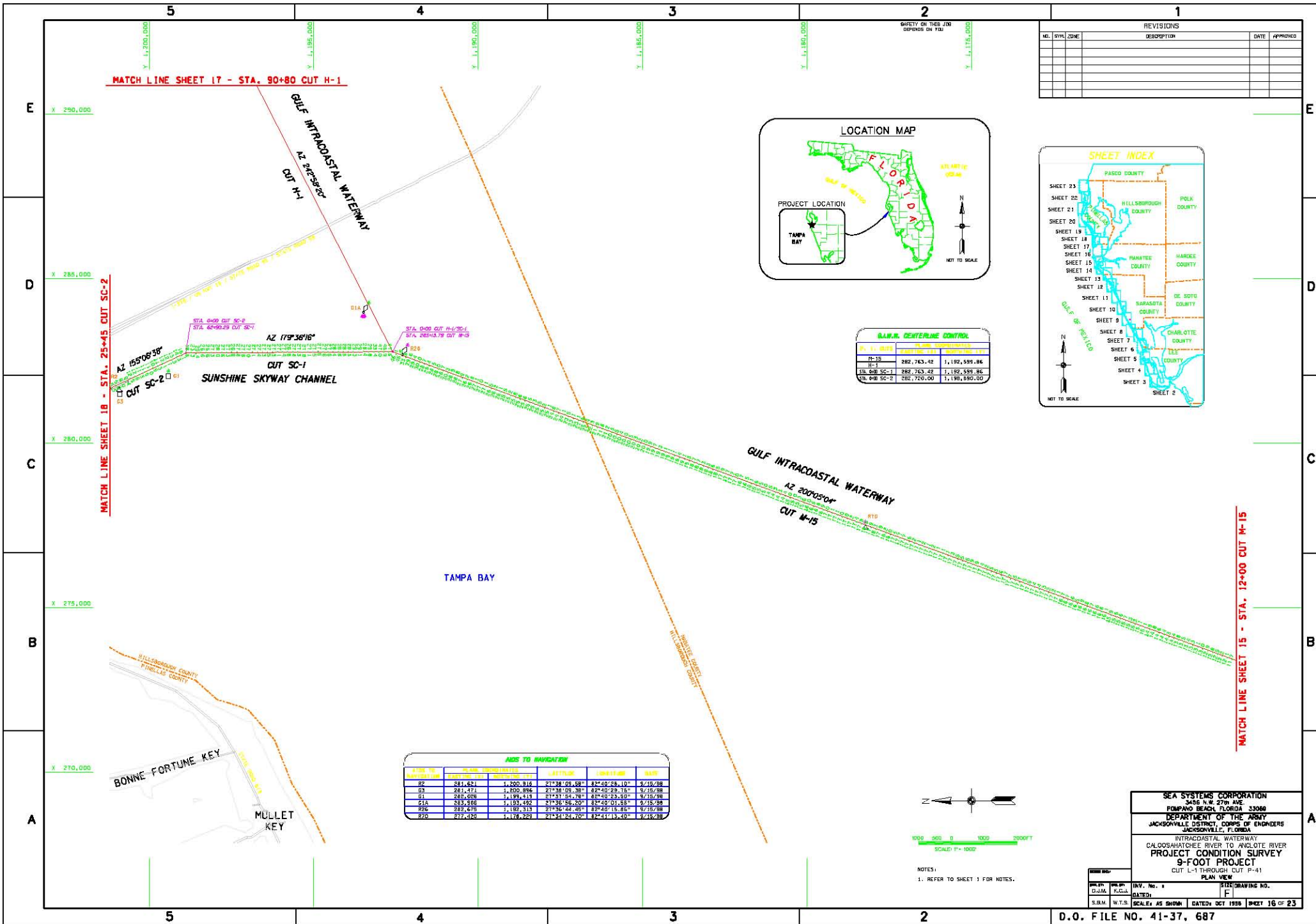


NOTES:
1. REFER TO SHEET 1 FOR NOTES.

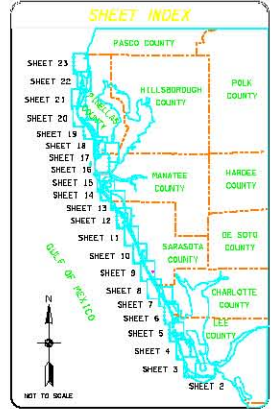
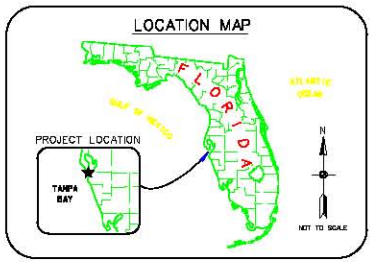
SEA SYSTEMS CORPORATION
3486 N.W. 27th AVE.
POMPA BEACH, FLORIDA 33068
DEPARTMENT OF THE ARMY
JACKSONVILLE DISTRICT, CORPS OF ENGINEERS
JACKSONVILLE, FLORIDA

INTRACOASTAL WATERWAY
CALOOSAHATCHEE RIVER TO ANCLOTE RIVER
PROJECT CONDITION SURVEY
9-FOOT PROJECT
CUT L-1 THROUGH CUT P-41
PLAN VIEW

DESIGNER	INVT. No. 1	DRAWING NO.
D.J.M.	F	
DATE:		
S.R.M. W.T.S.	SCALE: AS SHOWN	DATE: OCT 1998
		SHEET 15 OF 23

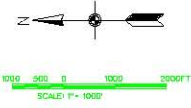


REVISIONS				
NO.	SYMBOL	DESCRIPTION	DATE	APPROVED



G.I.W. CENTERLINE CONTROL			
STATION	EASTING	NORTHING	DATE
M-15	282,763.42	1,192,599.86	8/15/88
CUT SC-1	282,763.42	1,192,599.86	8/15/88
CUT SC-2	282,720.00	1,198,690.00	8/15/88

AIDS TO NAVIGATION					
STATION	TYPE	COORDINATES	DEPTH	DATE	
R2	281.621	1,200,816	21°29'09.58"	82°40'28.10"	8/15/88
R3	281.474	1,200,896	21°29'09.38"	82°40'29.18"	8/15/88
R1	285,028	1,199,419	21°37'54.78"	82°40'23.90"	8/15/88
C1A	283,606	1,193,492	21°36'56.20"	82°40'01.68"	8/15/88
R5C	282,478	1,192,313	21°36'44.40"	82°40'18.26"	8/15/88
R7D	277,320	1,178,289	21°31'54.70"	82°41'13.40"	8/15/88

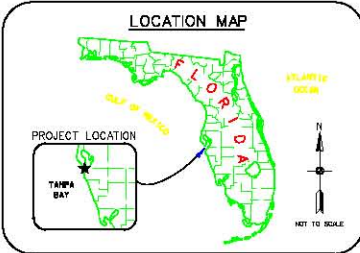
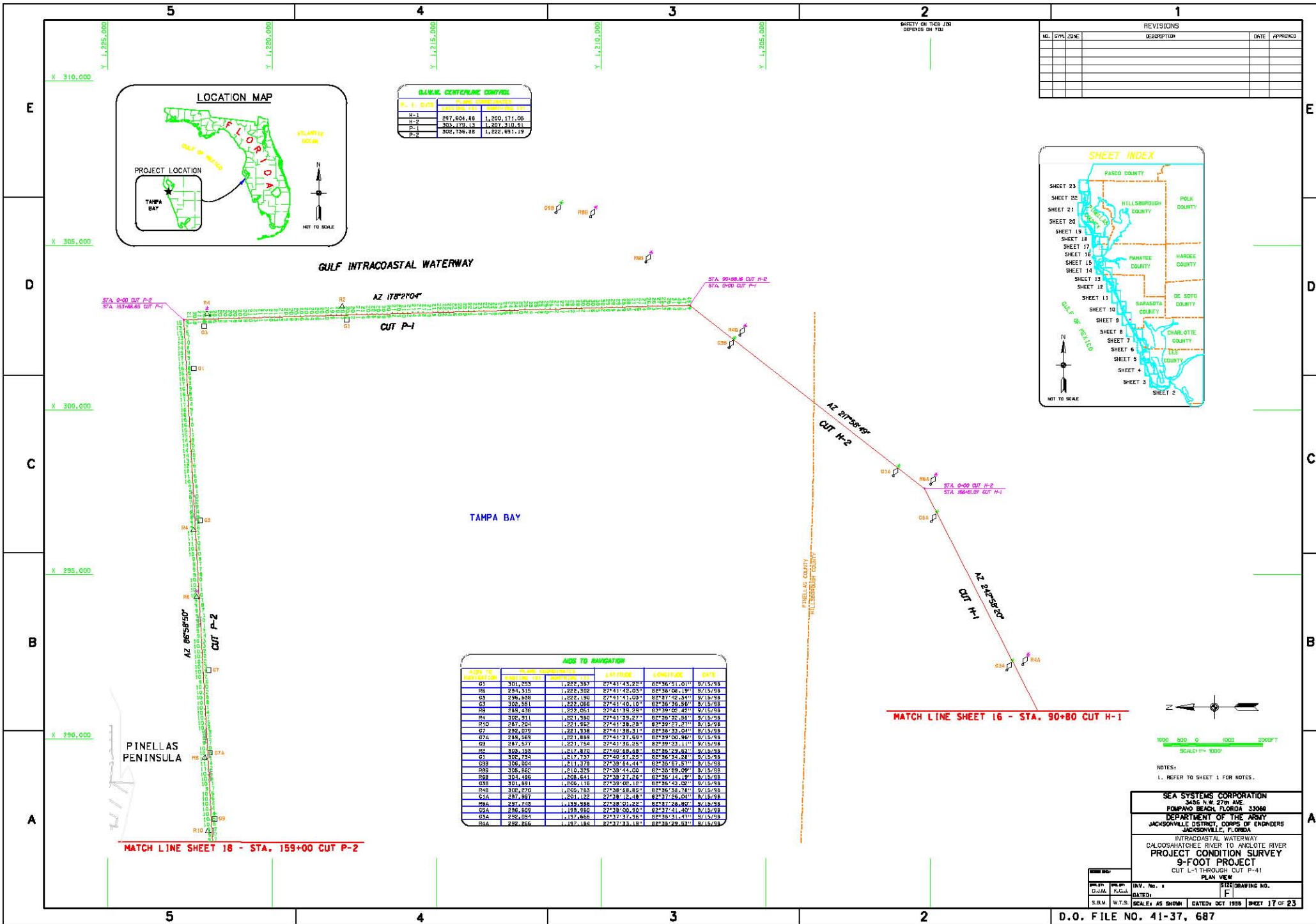


NOTES:
1. REFER TO SHEET 3 FOR NOTES.

SEA SYSTEMS CORPORATION
3485 N.W. 27th AVE.
FONTPANO BEACH, FLORIDA 33080
DEPARTMENT OF THE ARMY
JACKSONVILLE DISTRICT, CORPS OF ENGINEERS
JACKSONVILLE, FLORIDA

INTRACOASTAL WATERWAY
CALOOSAHATCHEE RIVER TO ANCLOTE RIVER
PROJECT CONDITION SURVEY
9-FOOT PROJECT
CUT L-1 THROUGH CUT P-41
PLAN VIEW

DATE: 8/15/88	BY: R.C.M.	INSTRUMENT NO.:
DATE: 8/15/88	BY: S.B.M.	DATE: OCT 1988

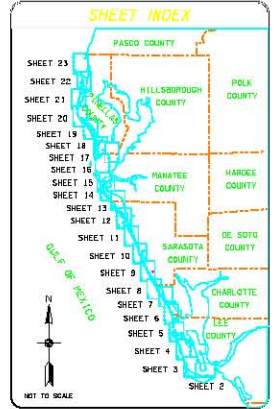


G.I.W.W. CENTERLINE CONTROL

LINE	STATION	EASTING	NORTHING
H-1	287,604.86	1,200,171.06	
H-2	303,176.13	1,201,310.91	
P-1	308,736.38	1,222,691.19	
P-2			

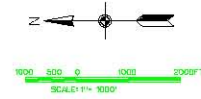
REVISIONS

NO.	SYMBOL	ZONE	DESCRIPTION	DATE	APPROVED



POINTS TO NAVIGATION

POINT NO.	EASTING	NORTHING	BEARING	DISTANCE	DATE
G1	301,293	1,225,387	274°41'45.22"	82°36'51.01"	9/15/98
G6	294,310	1,228,302	274°41'42.03"	82°36'08.19"	9/15/98
G5	296,638	1,224,190	274°41'41.03"	82°37'02.34"	9/15/98
G3	305,381	1,224,058	274°41'40.10"	82°36'56.59"	9/15/98
R8	288,438	1,222,051	274°41'39.29"	82°39'02.42"	9/15/98
R4	302,311	1,221,980	274°41'39.27"	82°36'32.86"	9/15/98
R10	287,204	1,221,982	274°41'38.29"	82°39'27.27"	9/15/98
G7	292,078	1,221,938	274°41'38.31"	82°36'31.04"	9/15/98
G7A	289,368	1,221,893	274°41'37.69"	82°39'00.86"	9/15/98
G8	287,577	1,221,754	274°41'36.25"	82°39'23.11"	9/15/98
R6	302,193	1,217,870	274°40'58.68"	82°36'09.83"	9/15/98
G1	302,734	1,217,737	274°40'57.25"	82°36'34.28"	9/15/98
G8B	306,004	1,211,379	272°33'54.44"	82°35'57.57"	9/15/98
R9B	309,350	1,210,329	272°33'44.00"	82°35'59.09"	9/15/98
R6B	304,498	1,208,641	272°33'27.86"	82°35'15.19"	9/15/98
G2B	301,891	1,209,118	274°39'02.12"	82°36'43.02"	9/15/98
R4B	302,270	1,209,163	274°38'58.89"	82°36'58.78"	9/15/98
G1A	287,997	1,201,122	272°38'12.48"	82°37'26.04"	9/15/98
R6A	297,748	1,193,986	274°38'01.22"	82°37'28.80"	9/15/98
G5A	296,409	1,193,956	274°38'00.00"	82°37'51.00"	9/15/98
G5A	292,094	1,197,668	273°37'37.95"	82°38'31.47"	9/15/98
R6A	292,246	1,197,184	273°37'33.19"	82°38'29.93"	9/15/98



NOTES:
1. REFER TO SHEET 1 FOR NOTES.

SEA SYSTEMS CORPORATION
 3485 N.W. 27th AVE.
 FORT LAUDERDALE, FLORIDA 33308
DEPARTMENT OF THE ARMY
 JACKSONVILLE DISTRICT, CORPS OF ENGINEERS
 JACKSONVILLE, FLORIDA

INTRACOASTAL WATERWAY
 CALOOSAHATCHEE RIVER TO ANCLOTE RIVER
 PROJECT CONDITION SURVEY
 9-FOOT PROJECT
 CUT L-1 THROUGH CUT P-41
 PLAN VIEW

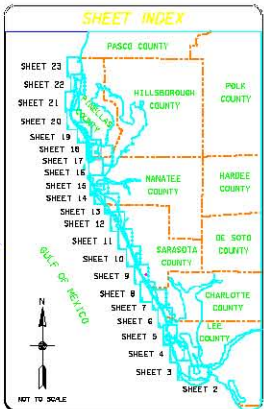
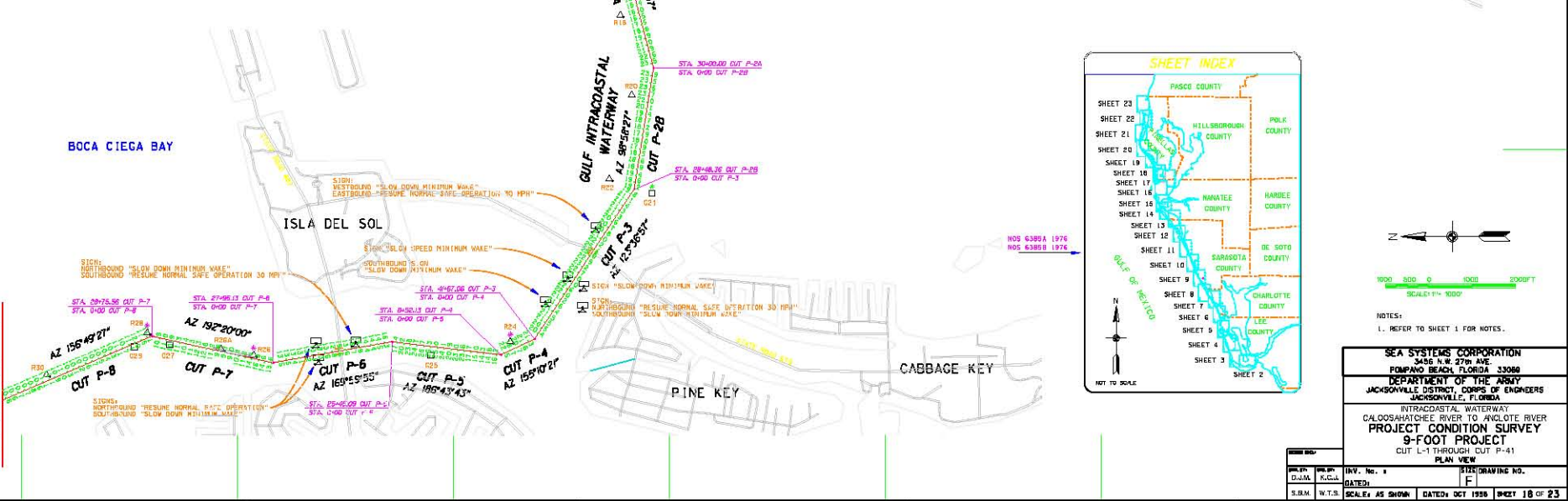
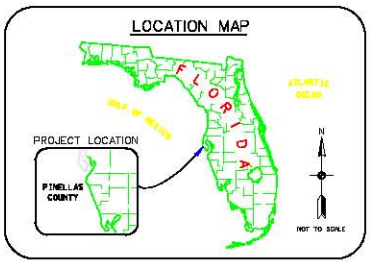
DATE: 10/1998
 DRAWING NO. 41-37-687

REVISONS		DATE	APPROVED
NO.	SYMBOL	DESCRIPTION	

MATCH LINE SHEET 17 - STA. 159+00 CUT P-2

LINE NO.	START STATION	END STATION	LENGTH	AREA	PERCENT
1	261.786	1,234,424	274,300.44	02*43*51.46	8/16/98
2	265.414	1,235,744	274,320.38	02*43*30.34	8/16/98
3	265.744	1,235,039	274,317.48	02*43*26.09	8/16/98
4	265.482	1,231,573	274,316.26	02*43*26.76	8/16/98
5	265.485	1,230,360	274,300.56	02*43*30.43	8/16/98
6	265.224	1,229,830	274,293.00	02*43*32.28	8/16/98
7	265.487	1,226,183	274,285.65	02*43*31.15	8/16/98
8	265.106	1,228,128	274,281.15	02*43*33.45	8/16/98
9	265.363	1,227,746	274,284.35	02*43*30.61	8/16/98
10	265.420	1,227,730	274,283.00	02*43*31.87	8/16/98
11	265.322	1,227,677	274,282.64	02*43*30.27	8/16/98
12	265.274	1,227,523	274,282.43	02*43*31.68	8/16/98
13	265.223	1,227,465	274,282.60	02*43*29.73	8/16/98
14	265.223	1,228,533	274,281.43	02*43*32.02	8/16/98
15	265.834	1,228,884	274,411.54	02*43*28.44	8/16/98
16	266.453	1,229,812	274,416.18	02*43*18.16	8/16/98
17	267.031	1,229,357	274,414.68	02*43*17.70	8/16/98
18	266.824	1,229,014	274,411.27	02*43*19.54	8/16/98
19	266.816	1,229,186	274,413.38	02*43*16.07	8/16/98
20	267.372	1,221,880	274,411.36	02*43*09.85	8/16/98
21	267.317	1,221,733	274,411.25	02*43*04.03	8/16/98
22	267.507	1,221,774	274,411.35	02*43*06.37	8/16/98
23	267.848	1,221,887	274,411.94	02*43*04.78	8/16/98
24	269.172	1,221,704	274,411.68	02*43*08.06	8/16/98
25	264.731	1,201,507	274,411.33	02*43*54.75	8/16/98
26	264.386	1,221,810	274,411.45	02*40*43.06	8/16/98
27	264.116	1,221,888	274,411.53	02*41*46.08	8/16/98
28	262.708	1,221,491	274,411.33	02*40*17.26	8/16/98
29	278.790	1,221,429	274,411.32	02*41*01.28	8/16/98
30	262.318	1,221,782	274,411.66	02*42*46.20	8/16/98
31	260.830	1,221,878	274,411.92	02*40*43.03	8/16/98
32	260.120	1,221,367	274,411.30	02*40*46.03	8/16/98
33	276.443	1,221,319	274,411.34	02*41*02.84	8/16/98
34	278.098	1,221,181	274,411.30	02*41*08.52	8/16/98
35	278.476	1,221,128	274,411.23	02*40*36.75	8/16/98
36	273.112	1,221,139	274,411.23	02*42*03.06	8/16/98
37	275.865	1,221,054	274,411.24	02*41*06.63	8/16/98
38	278.483	1,220,877	274,411.27	02*41*01.83	8/16/98
39	271.567	1,220,812	274,411.24	02*42*24.48	8/16/98
40	268.872	1,220,406	274,411.01	02*42*49.87	8/16/98
41	278.408	1,220,330	274,411.21	02*41*03.83	8/16/98
42	278.758	1,219,037	274,411.03	02*41*01.10	8/16/98
43	278.693	1,218,861	274,411.07	02*41*02.86	8/16/98
44	278.838	1,217,806	274,409.12	02*41*00.10	8/16/98
45	278.693	1,217,300	274,409.15	02*41*01.08	8/16/98
46	278.901	1,216,487	274,409.33	02*40*58.23	8/16/98
47	278.794	1,216,389	274,409.50	02*41*01.08	8/16/98
48	278.024	1,213,766	274,409.16	02*40*57.76	8/16/98
49	278.779	1,213,123	274,409.15	02*41*00.46	8/16/98
50	278.083	1,211,873	274,409.15	02*40*51.21	8/16/98
51	278.880	1,211,840	274,409.14	02*40*58.24	8/16/98
52	278.858	1,209,214	274,409.14	02*40*58.14	8/16/98
53	278.130	1,209,888	274,409.29	02*40*56.34	8/16/98
54	279.043	1,207,856	274,409.16	02*40*57.16	8/16/98
55	279.053	1,207,616	274,409.16	02*40*56.20	8/16/98
56	279.254	1,207,003	274,409.73	02*40*54.78	8/16/98
57	279.117	1,206,813	274,409.04	02*40*36.28	8/16/98
58	273.378	1,206,184	274,409.12	02*40*53.35	8/16/98
59	275.872	1,204,861	274,409.56	02*40*47.78	8/16/98
60	260.460	1,203,534	274,409.46	02*40*36.84	8/16/98
61	260.480	1,203,456	274,409.46	02*40*49.84	8/16/98

LINE NO.	START STATION	END STATION	LENGTH	AREA	PERCENT
1	278,180.00	1,221,320.00	274,340.00	02*43*26.09	8/16/98
2	278,578.50	1,221,346.43	274,340.00	02*43*26.09	8/16/98
3	274,778.67	1,221,134.96	274,340.00	02*43*26.09	8/16/98
4	271,878.17	1,220,378.54	274,340.00	02*43*26.09	8/16/98
5	265,894.48	1,220,103.78	274,340.00	02*43*26.09	8/16/98
6	265,236.68	1,220,897.15	274,340.00	02*43*26.09	8/16/98
7	265,434.88	1,220,424.71	274,340.00	02*43*26.09	8/16/98
8	265,049.48	1,220,177.36	274,340.00	02*43*26.09	8/16/98
9	265,667.68	1,221,986.56	274,340.00	02*43*26.09	8/16/98



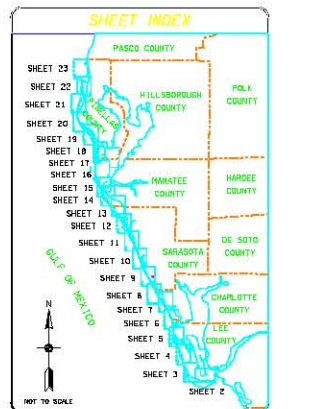
SEA SYSTEMS CORPORATION
 POMPANO BEACH, FLORIDA 33068
 DEPARTMENT OF THE ARMY
 JACKSONVILLE DISTRICT, CORPS OF ENGINEERS
 JACKSONVILLE, FLORIDA

INTRACOASTAL WATERWAY
 CALOOSAHATCHEE RIVER TO ANCLOTE RIVER
 PROJECT CONDITION SURVEY
 9-FOOT PROJECT
 CUT L-1 THROUGH CUT P-41
 PLAN VIEW

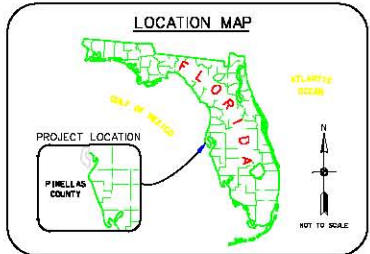
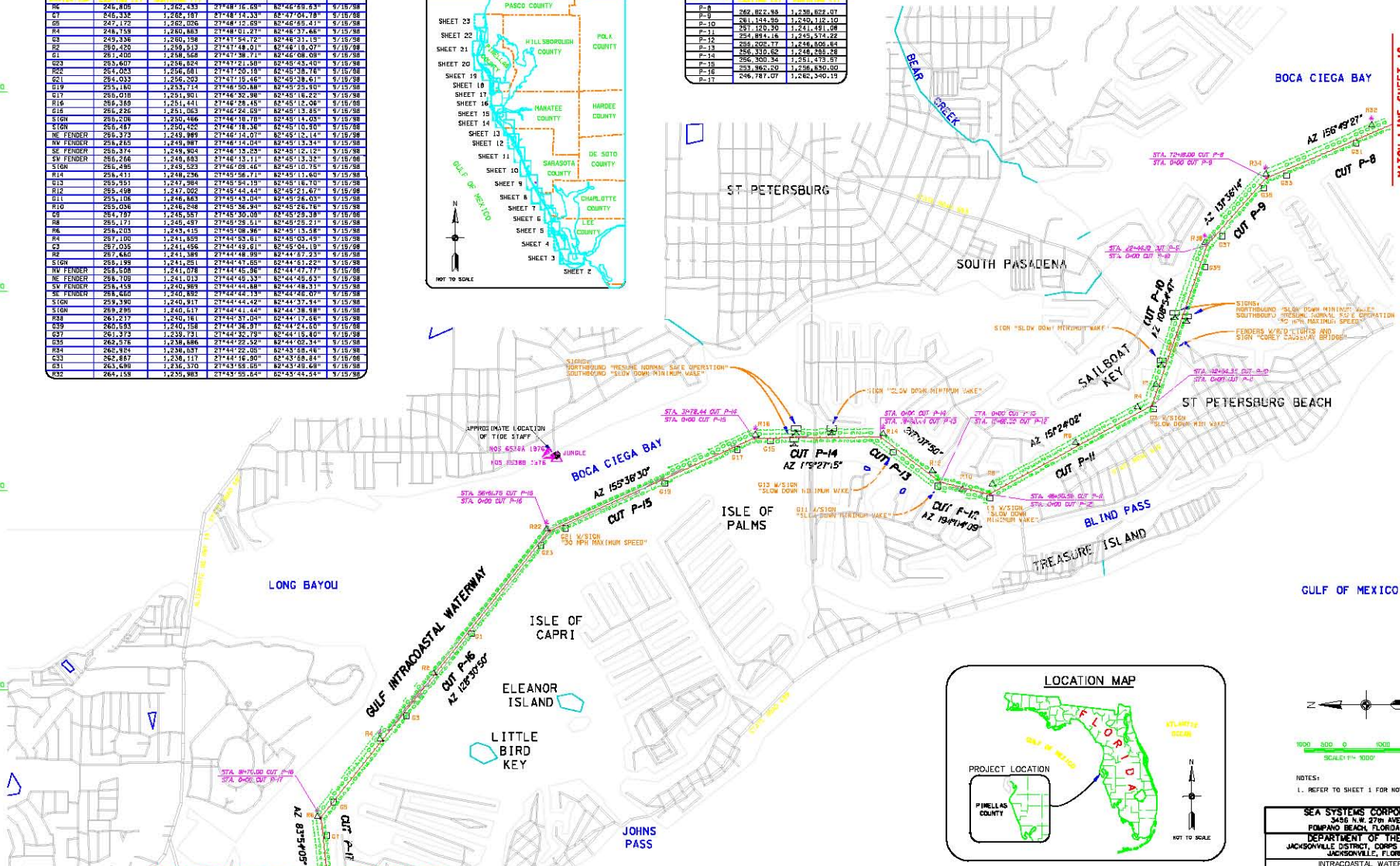
DATE: 10/19/98
 DRAWING NO. 41-37-687
 SCALE: AS SHOWN
 DATED: OCT 1998
 SHEET 18 OF 23

REVISIONS				
NO.	SYMBOL	DESCRIPTION	DATE	APPROVED

ADD TO NAVIGATION					
STATION	NAD 83 ELEVATION (FEET)	NAD 83 UTM X	NAD 83 UTM Y	DATE	NOTE
06	246.800	1,262,333	21448716.89	02/26/98	02/19/98
07	246.336	1,246,187	21448714.33	02/27/98	02/19/98
08	247.172	1,262,096	21448712.89	02/26/98	02/19/98
09	246.753	1,260,883	21448701.27	02/26/98	02/19/98
10	249.336	1,240,156	21447547.72	02/26/98	02/19/98
11	250.220	1,259,513	2144748.01	02/26/98	02/19/98
12	251.200	1,258,568	21447398.71	02/26/98	02/19/98
13	253.607	1,236,324	21447221.89	02/26/98	02/19/98
14	254.053	1,256,581	2144720.18	02/26/98	02/19/98
15	254.033	1,256,302	2144715.46	02/26/98	02/19/98
16	253.160	1,253,114	2144650.88	02/27/98	02/19/98
17	255.018	1,251,901	2144632.98	02/26/98	02/19/98
18	256.369	1,251,441	2144628.18	02/26/98	02/19/98
19	256.256	1,251,363	2144624.93	02/26/98	02/19/98
20	256.208	1,250,466	2144618.78	02/26/98	02/19/98
21	255.467	1,250,420	2144618.58	02/26/98	02/19/98
22	255.373	1,249,385	2144612.07	02/26/98	02/19/98
23	255.255	1,249,387	2144614.04	02/26/98	02/19/98
24	255.314	1,249,304	2144613.23	02/26/98	02/19/98
25	256.266	1,249,583	2144613.11	02/26/98	02/19/98
26	256.485	1,248,523	2144609.46	02/26/98	02/19/98
27	256.411	1,248,276	2144595.71	02/26/98	02/19/98
28	255.551	1,247,384	2144584.15	02/26/98	02/19/98
29	255.488	1,247,022	2144544.44	02/26/98	02/19/98
30	255.106	1,246,183	2144532.04	02/26/98	02/19/98
31	255.036	1,246,248	2144536.94	02/26/98	02/19/98
32	254.787	1,245,357	2144530.08	02/26/98	02/19/98
33	255.171	1,245,487	2144528.51	02/26/98	02/19/98
34	255.203	1,243,415	2144508.96	02/26/98	02/19/98
35	254.180	1,241,659	2144483.81	02/26/98	02/19/98
36	254.035	1,241,456	2144478.61	02/26/98	02/19/98
37	254.650	1,241,385	2144478.99	02/26/98	02/19/98
38	254.158	1,241,251	2144474.55	02/26/98	02/19/98
39	254.508	1,241,078	2144474.56	02/26/98	02/19/98
40	254.709	1,241,013	2144474.53	02/26/98	02/19/98
41	254.153	1,240,889	2144474.88	02/26/98	02/19/98
42	254.650	1,240,892	2144474.13	02/26/98	02/19/98
43	254.330	1,240,917	2144474.22	02/26/98	02/19/98
44	254.789	1,240,917	2144474.44	02/26/98	02/19/98
45	261.217	1,240,181	2144437.04	02/26/98	02/19/98
46	260.593	1,240,158	2144436.91	02/26/98	02/19/98
47	261.312	1,239,721	2144435.74	02/26/98	02/19/98
48	262.578	1,238,186	2144422.32	02/26/98	02/19/98
49	262.924	1,236,837	2144402.88	02/26/98	02/19/98
50	262.887	1,236,117	2144416.99	02/26/98	02/19/98
51	263.688	1,236,370	2144395.55	02/26/98	02/19/98
52	264.158	1,235,383	2144375.54	02/26/98	02/19/98



G.L.W. CENTERLINE CONTROL			
P. I.	STATION	ELEVATION	DATE
P-8	242,822.85	1,238,822.07	02/19/98
P-9	241,344.95	1,240,119.10	02/19/98
P-10	241,120.20	1,241,491.08	02/19/98
P-11	240,854.18	1,243,514.22	02/19/98
P-12	239,502.77	1,248,808.94	02/19/98
P-13	239,310.52	1,248,238.98	02/19/98
P-14	236,300.34	1,251,479.87	02/19/98
P-15	233,862.20	1,256,630.00	02/19/98
P-17	236,787.07	1,262,349.13	02/19/98



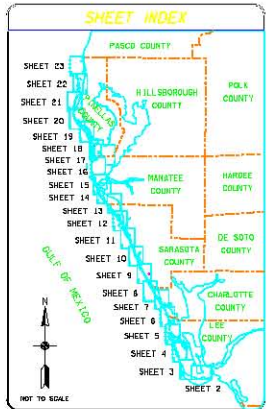
NOTES:
1. REFER TO SHEET 1 FOR NOTES.

SEA SYSTEMS CORPORATION
3406 N.W. 27th AVE.
POMPAN BEACH, FLORIDA 33060
DEPARTMENT OF THE ARMY
JACKSONVILLE DISTRICT, CORPS OF ENGINEERS
JACKSONVILLE, FLORIDA

INTRACOASTAL WATERWAY
CALOOSAHATCHEE RIVER TO ANCLOTE RIVER
PROJECT CONDITION SURVEY
9-FOOT PROJECT
CUT L-1 THROUGH CUT P-41
PLAN VIEW

SCALE: HORIZ. 1"=1000'	DATE: F	DRAWING NO.:
SCALE: VERT. AS SHOWN	DATE: OCT 1998	SHEET 19 OF 23

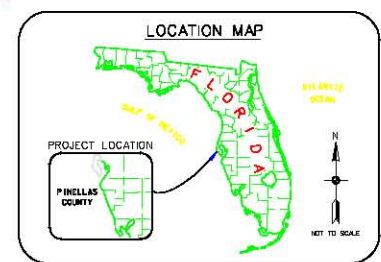
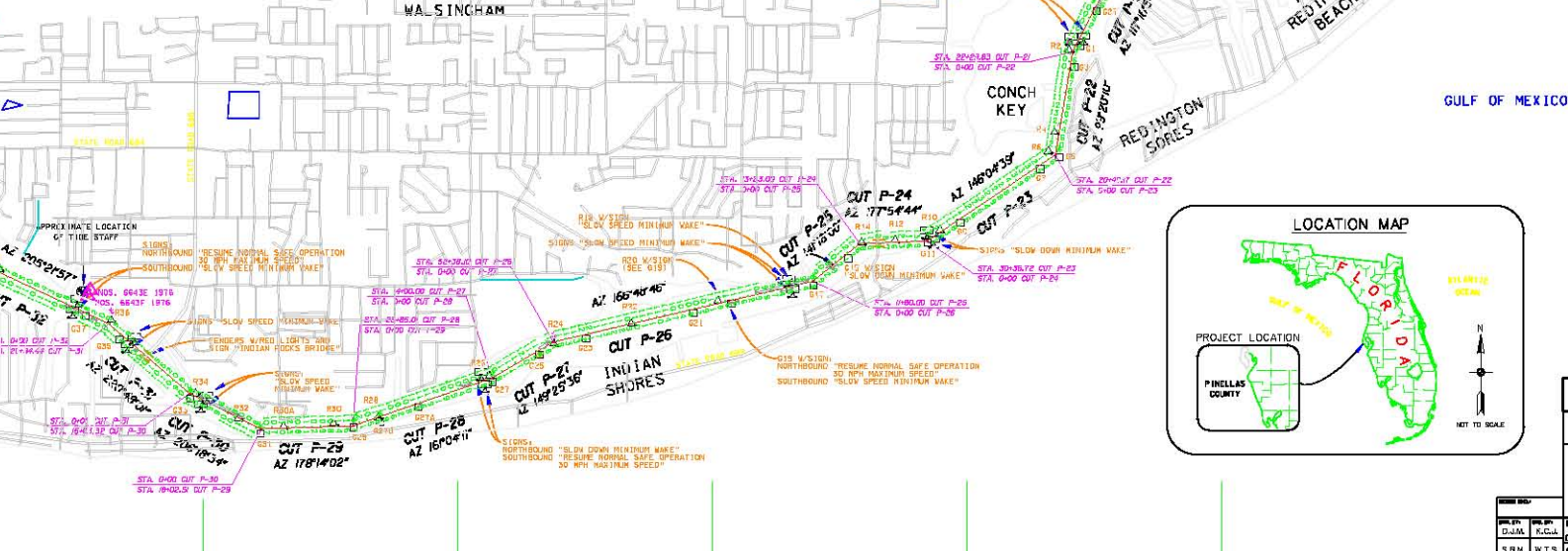
NO.		SYMBOL	ZONE	DESCRIPTION	DATE	APPROVED
REVISIONS						



STATION	DATE	DESCRIPTION	BY	DATE
R88	2/28/98	1,253,498	27450 28.00	8250 28.00
SIGN	2/27/98	1,252,600	27453 13.75	8250 34.63
SIGN	2/27/98	1,252,473	27453 12.80	8250 32.30
CUT	2/27/98	1,252,300	27451 11.10	8250 30.41
R86	2/27/98	1,251,808	27453 08.21	8250 28.22
G36	2/27/98	1,251,446	27453 04.66	8250 26.86
SIGN	2/27/98	1,251,495	27453 03.16	8250 26.23
N FENDER	2/27/98	1,251,164	27453 01.16	8250 24.31
SIGN	2/27/98	1,251,240	27453 02.62	8250 24.71
E FENDER	2/26/98	1,251,164	27452 59.88	8250 22.64
V FENDER	2/26/98	1,251,008	27452 56.35	8250 21.91
S FENDER	2/26/98	1,250,885	27452 56.05	8250 21.34
G33	2/26/98	1,250,748	27452 50.74	8250 18.21
R34	2/26/98	1,250,147	27452 45.75	8250 15.00
SIGN	2/25/98	1,250,082	27452 48.68	8250 16.11
G33	2/25/98	1,249,933	27452 41.62	8250 13.18
R32	2/25/98	1,249,304	27452 41.31	8250 12.35
CUT	2/25/98	1,248,872	27452 31.08	8250 10.78
R30D	2/25/98	1,248,418	27452 29.58	8250 10.05
R30	2/25/98	1,248,436	27452 29.81	8250 10.28
D29	2/25/98	1,248,041	27452 18.85	8250 09.38
R28	2/25/98	1,248,061	27452 19.24	8250 09.98
C27B	2/25/98	1,248,633	27452 13.52	8250 08.00
D27A	2/25/98	1,248,777	27452 06.48	8250 06.81
SIGN	2/25/98	1,248,438	27452 07.21	8250 07.91
SIGN	2/25/98	1,248,484	27452 03.49	8250 06.30
R26	2/25/98	1,248,378	27452 03.62	8250 06.18
D25	2/25/98	1,248,515	27452 05.55	8250 05.18
G25	2/25/98	1,248,398	27452 02.94	8250 03.46
R24	2/25/98	1,248,110	27452 14.81	8250 06.11
G23	2/27/98	1,248,485	27452 13.86	8250 05.61
R22	2/27/98	1,248,588	27452 12.10	8250 05.11
D21	2/27/98	1,248,265	27452 13.64	8250 03.44
R20	2/27/98	1,248,886	27452 10.81	8250 30.00
D19	2/27/98	1,248,627	27452 06.70	8250 31.72
SIGN	2/25/98	1,248,492	27452 04.49	8250 28.14
R18	2/25/98	1,248,436	27452 03.54	8250 28.93
SIGN	2/25/98	1,248,418	27452 03.12	8250 28.07
D17	2/25/98	1,248,408	27452 03.00	8250 27.87
G16	2/25/98	1,248,328	27452 03.00	8250 21.92
R14	2/25/98	1,248,068	27452 01.00	8250 17.93
NV FENDER	2/24/98	1,248,443	27452 30.21	8250 18.90
NV FENDER	2/24/98	1,248,398	27452 30.18	8250 17.61
S FENDER	2/24/98	1,248,616	27452 30.28	8250 18.93
S FENDER	2/24/98	1,248,610	27452 30.91	8250 17.66
R12	2/24/98	1,248,405	27452 33.89	8250 17.40
SIGN	2/24/98	1,248,748	27452 21.78	8250 18.07
G11	2/24/98	1,248,774	27452 21.63	8250 18.04

STATION	DATE	DESCRIPTION	BY	DATE
SIGN	2/24/98	1,248,648	27452 28.30	8250 18.00
R10	2/24/98	1,248,528	27452 28.30	8250 15.00
D8	2/24/98	1,248,159	27452 21.27	8250 13.66
R7	2/24/98	1,248,058	27452 20.80	8250 01.81
R6	2/24/98	1,248,001	27452 20.28	8249 59.19
G4	2/21/98	1,248,219	27452 03.08	8249 53.49
SIGN	2/20/98	1,248,190	27452 02.18	8249 59.14
R2	2/20/98	1,248,098	27452 02.38	8249 53.76
SIGN	2/20/98	1,248,558	27452 00.02	8249 33.46
G3	2/22/98	1,248,695	27452 00.34	8249 33.40
R1	2/20/98	1,248,112	27452 00.17	8249 24.86
SIGN	2/23/98	1,248,703	27449 57.48	8249 33.31
D27	1/22/98	1,248,454	27449 48.48	8249 21.15
R24	2/24/98	1,248,555	27449 50.18	8249 13.14
D24	2/24/98	1,248,333	27449 48.97	8249 16.75
C23	2/24/98	1,248,171	27449 48.48	8249 11.38
D21	2/24/98	1,248,459	27449 36.47	8248 59.63
R20	2/24/98	1,248,444	27449 36.60	8248 48.07
R18	2/24/98	1,248,424	27449 35.47	8248 34.65
G19	2/24/98	1,248,211	27449 14.34	8248 59.14
D17	2/23/98	1,248,688	27448 38.33	8248 18.37
R16	2/21/98	1,248,550	27448 35.60	8248 19.90
G15	2/21/98	1,248,104	27448 42.78	8248 05.07
R14	2/21/98	1,248,485	27448 38.34	8247 53.57
SIGN	2/22/98	1,248,108	27448 35.39	8247 50.81
G13	2/22/98	1,248,619	27448 30.15	8247 55.25
SIGN	2/22/98	1,248,713	27448 28.72	8247 53.98
N FENDER	2/22/98	1,248,300	27448 25.12	8247 42.13
V FENDER	2/24/98	1,248,218	27448 24.18	8247 43.80
E FENDER	2/24/98	1,248,295	27448 25.00	8247 39.12
S FENDER	2/24/98	1,248,108	27448 23.13	8247 42.87
SIGN	2/23/98	1,248,674	27448 20.85	8247 35.85
SIGN	2/24/98	1,248,821	27448 15.03	8247 38.11
R10	2/24/98	1,248,450	27448 16.68	8247 30.19
R8	2/24/98	1,248,225	27448 14.88	8247 21.36
C2	2/24/98	1,248,335	27448 11.11	8247 21.00

STATION	DATE	DESCRIPTION	BY	DATE
P-17	244,308.00	1,265,075.00		
P-18	244,180.80	1,263,964.10		
P-19	241,426.80	1,265,071.30		
P-20	236,782.54	1,271,805.85		
P-21	230,810.75	1,272,857.33		
P-22	230,186.72	1,273,280.15		
P-23	228,084.00	1,275,780.00		
P-24	229,045.80	1,277,102.12		
P-25	228,308.00	1,278,283.03		
P-26	227,113.00	1,283,153.00		
P-27	228,400.80	1,286,328.40		
P-28	225,485.00	1,287,097.30		
P-29	225,103.40	1,288,859.30		
P-30	224,100.30	1,290,460.40		
P-31	224,470.85	1,291,849.80		



NOTES:
1. REFER TO SHEET 1 FOR NOTES.

SEA SYSTEMS CORPORATION
3486 N.W. 27th AVE.
POMPA BEACH, FLORIDA 33068
DEPARTMENT OF THE ARMY
JACKSONVILLE DISTRICT, CORPS OF ENGINEERS
JACKSONVILLE, FLORIDA

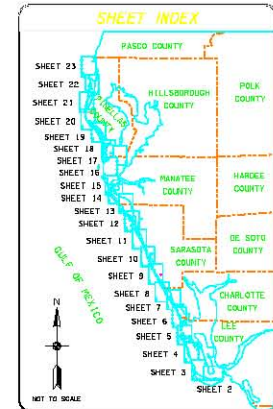
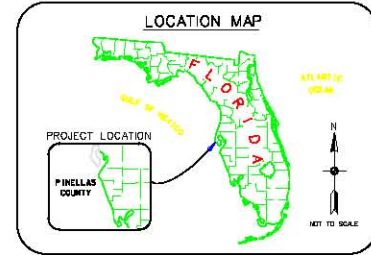
INTRACASTAL WATERWAY
CALOOSAHATCHEE RIVER TO ANOLITE RIVER
PROJECT CONDITION SURVEY
9-FOOT PROJECT
CUT L-1 THROUGH CUT P-41
PLAN VIEW

DATE: 1/15/98
SCALE: AS SHOWN
DATE: OCT 1998
SHEET 20 OF 23

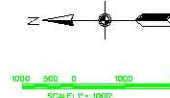
INVEST. No. 1
DRAWING No. F

REVISIONS				
NO.	SYMBOL	DESCRIPTION	DATE	APPROVED

G.L.W. CENTERLINE CONTROL		
P. NO.	E. TO	E. FROM
P-32	229,317.85	1,296,765.80
P-33	231,082.60	1,301,622.00
P-34	233,290.00	1,314,950.00
P-35	240,347.94	1,322,082.40
P-36	240,559.70	1,334,150.00
P-37	241,299.11	1,329,096.92
P-38A		



AIDS TO NAVIGATION							
AID TO NAVIGATION	TYPE	NO.	COORDINATE	HEIGHT	CHARACTER	DATE	STATUS
R18		241,231	1,328,095	27°58'06.50"	E	8/16/98	
R18		241,383	1,328,086	27°58'06.42"	E	8/16/98	
C17		240,740	1,325,406	27°58'43.81"	E	8/16/98	
R15A		240,502	1,329,133	27°58'11.17"	E	8/16/98	
R15		240,385	1,324,255	27°58'18.43"	E	8/16/98	
R18		240,544	1,324,203	27°58'27.58"	E	8/16/98	
R14A		240,535	1,322,730	27°58'13.35"	E	8/16/98	
R14		240,413	1,322,042	27°58'06.52"	E	8/16/98	
SIGN		239,828	1,321,892	27°58'05.38"	E	8/16/98	
N FENDER		239,870	1,321,844	27°57'59.37"	E	8/16/98	
E FENDER		239,579	1,321,281	27°57'48.55"	E	8/16/98	
N FENDER		239,788	1,321,361	27°57'58.01"	E	8/16/98	
S FENDER		239,872	1,321,080	27°57'58.55"	E	8/16/98	
SIGN		239,740	1,320,720	27°57'43.38"	E	8/16/98	
R13		239,525	1,318,908	27°57'53.35"	E	8/16/98	
R12		238,452	1,318,289	27°57'28.23"	E	8/16/98	
C11		237,285	1,316,404	27°57'10.49"	E	8/16/98	
R10		236,449	1,314,451	27°56'51.60"	E	8/16/98	
R10A		235,842	1,313,345	27°56'40.10"	E	8/16/98	
R9		236,006	1,312,810	27°56'31.19"	E	8/16/98	
R8		235,383	1,312,487	27°56'21.18"	E	8/16/98	
R8		234,285	1,310,031	27°56'07.18"	E	8/16/98	
R8		234,411	1,309,385	27°56'06.46"	E	8/16/98	
R4		233,321	1,307,093	27°55'39.39"	E	8/16/98	
R3		233,151	1,307,285	27°55'39.52"	E	8/16/98	
R1A		232,892	1,306,968	27°55'33.81"	E	8/16/98	
D1		232,600	1,305,891	27°55'28.06"	E	8/16/98	
R2		232,728	1,305,859	27°55'25.77"	E	8/16/98	
SIGN		231,649	1,303,803	27°55'05.31"	E	8/16/98	
SIGN		231,861	1,303,750	27°55'04.51"	E	8/16/98	
NW FENDER		231,606	1,303,346	27°55'05.81"	E	8/16/98	
NE FENDER		231,728	1,303,393	27°55'05.60"	E	8/16/98	
SW FENDER		231,551	1,303,173	27°54'58.10"	E	8/16/98	
SE FENDER		231,874	1,303,134	27°54'58.35"	E	8/16/98	
SIGN		231,954	1,302,800	27°54'55.42"	E	8/16/98	
SIGN		231,587	1,302,717	27°54'44.66"	E	8/16/98	
C17		231,047	1,301,804	27°54'45.38"	E	8/16/98	
R16		230,686	1,300,079	27°54'27.61"	E	8/16/98	
O45		230,104	1,298,780	27°54'15.50"	E	8/16/98	
R14		229,874	1,297,323	27°54'01.00"	E	8/16/98	
R42		229,407	1,296,728	27°53'49.21"	E	8/16/98	
C41		229,216	1,295,865	27°53'44.79"	E	8/16/98	
R40		228,810	1,294,734	27°53'35.30"	E	8/16/98	
O39		228,749	1,294,873	27°53'34.74"	E	8/16/98	



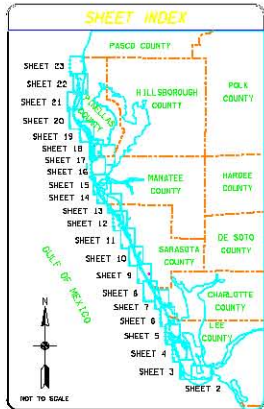
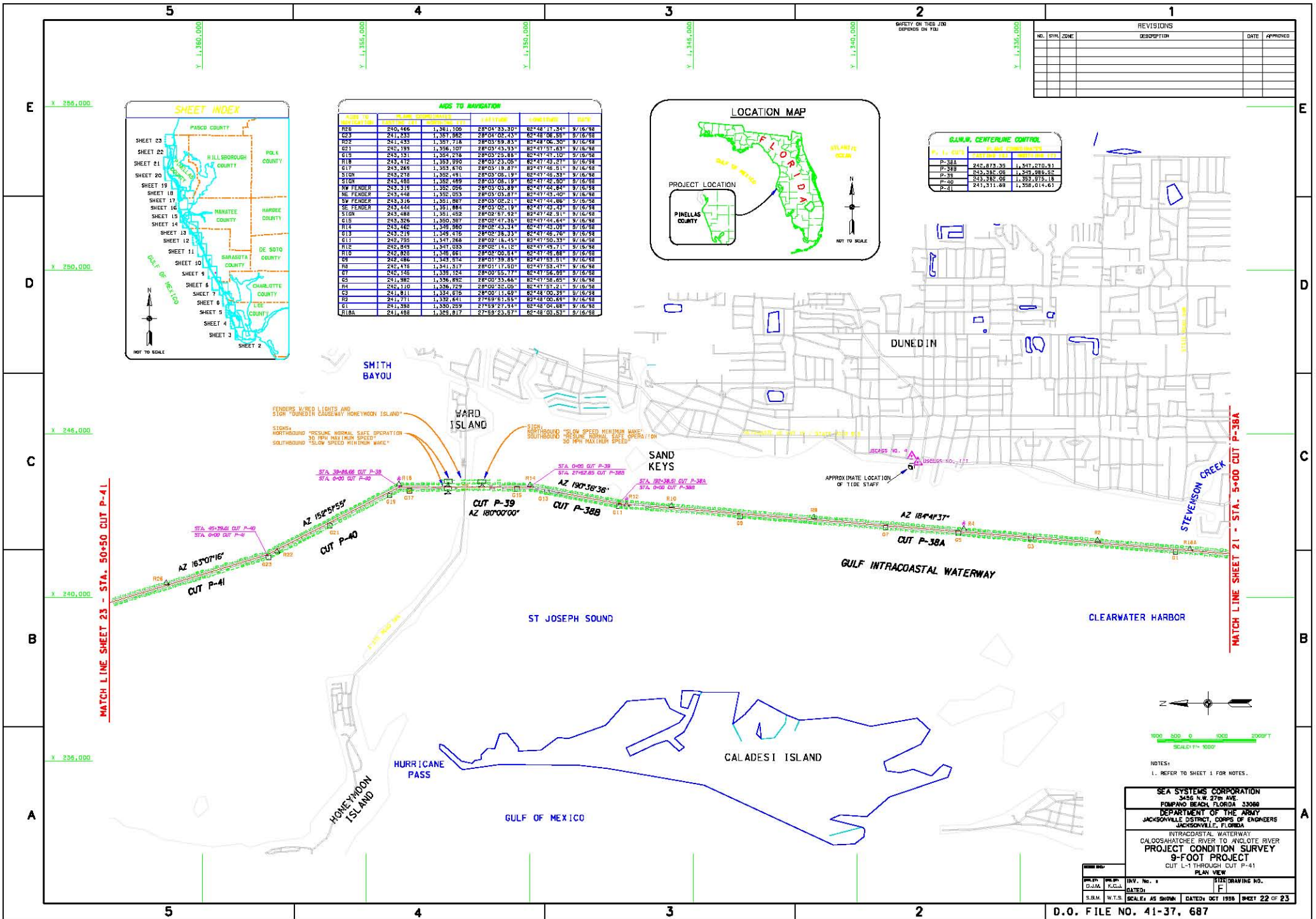
NOTES:
1. REFER TO SHEET J FOR NOTES.

SEA SYSTEMS CORPORATION
3485 N.W. 27th AVE.
POMPANOA BEACH, FLORIDA 33068

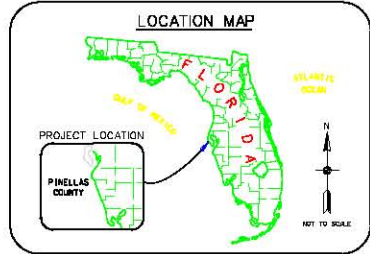
DEPARTMENT OF THE ARMY
JACKSONVILLE DISTRICT, ENGINEERS
JACKSONVILLE, FLORIDA

INTRACASTAL WATERWAY
CALOOSAHATCHEE RIVER TO ANCLOTE RIVER
PROJECT CONDITION SURVEY
9-FOOT PROJECT
CUT L-1 THROUGH CUT P-41
PLAN VIEW

DATE: 11/16/98	SCALE: AS SHOWN	DATE: OCT 1998	SHEET: 21 OF 23
DRAWN BY: 	CHECKED BY: 	INCH. No. 	DATE:



STATION	ELEVATION	CHANGING POINT	LEFT CURVE	RIGHT CURVE	DATE
R26	240.466	1,361.106	28°04'33.30"	82°48'17.34"	9/16/98
G24	241.255	1,357.882	28°04'02.43"	82°48'06.80"	9/16/98
R22	241.433	1,357.718	28°03'59.83"	82°48'06.30"	9/16/98
G23	242.189	1,356.107	28°03'43.33"	82°47'57.63"	9/16/98
G19	243.131	1,359.276	28°03'43.83"	82°47'57.10"	9/16/98
R18	243.412	1,359.990	28°03'23.05"	82°47'43.27"	9/16/98
G17	243.266	1,353.810	28°03'18.27"	82°47'46.51"	9/16/98
G16	243.278	1,352.481	28°03'06.19"	82°47'46.23"	9/16/98
R14	243.483	1,352.489	28°03'08.19"	82°47'42.80"	9/16/98
R13	243.315	1,352.006	28°03'02.89"	82°47'44.84"	9/16/98
R12	243.148	1,352.053	28°03'03.87"	82°47'43.40"	9/16/98
R11	243.316	1,351.887	28°03'02.21"	82°47'38.86"	9/16/98
R10	243.244	1,351.884	28°03'02.19"	82°47'42.83"	9/16/98
G15	243.488	1,351.452	28°02'57.92"	82°47'42.91"	9/16/98
G14	243.326	1,350.867	28°02'47.36"	82°47'44.64"	9/16/98
G13	243.480	1,349.880	28°02'43.34"	82°47'43.08"	9/16/98
G12	243.219	1,349.876	28°02'36.33"	82°47'45.76"	9/16/98
G11	242.789	1,347.268	28°02'16.45"	82°47'50.39"	9/16/98
G10	242.659	1,347.033	28°02'14.15"	82°47'53.71"	9/16/98
R10	242.823	1,348.041	28°02'00.84"	82°47'45.88"	9/16/98
R9	242.486	1,348.874	28°01'59.85"	82°47'53.81"	9/16/98
R8	242.476	1,341.317	28°01'17.00"	82°47'53.47"	9/16/98
G7	242.195	1,338.124	28°00'55.77"	82°47'56.89"	9/16/98
G5	241.382	1,336.892	28°00'53.66"	82°47'56.65"	9/16/98
R4	241.110	1,336.129	28°00'32.00"	82°47'57.21"	9/16/98
G3	241.811	1,334.015	28°00'11.69"	82°48'00.39"	9/16/98
G2	241.711	1,332.641	27°59'57.85"	82°48'00.65"	9/16/98
G1	241.398	1,330.259	27°59'27.94"	82°48'04.88"	9/16/98
R18A	241.488	1,329.817	27°59'23.87"	82°48'03.63"	9/16/98

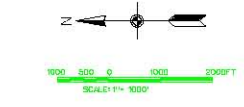


G.L.W. CENTERLINE CONTROL		
P	STATION	ELEVATION
P-38A	242.873.30	1,347,270.31
P-38	243,382.08	1,345,885.52
P-40	243,362.08	1,352,819.18
P-31	241,311.89	1,358,014.63

REVISIONS					
NO.	SYMBOL	ZONE	DESCRIPTION	DATE	APPROVED

MATCH LINE SHEET 23 - STA. 50+50 CUT P-41

MATCH LINE SHEET 21 - STA. 5+00 CUT P-38A



NOTES:
1. REFER TO SHEET 1 FOR NOTES.

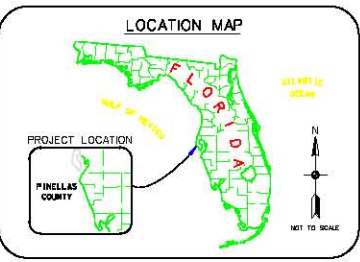
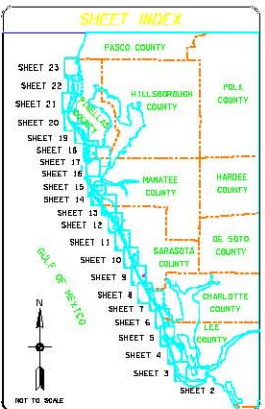
SEA SYSTEMS CORPORATION
3405 N.W. 27th AVE.
POMPAHO BEACH, FLORIDA 33068
DEPARTMENT OF THE ARMY
JACKSONVILLE DISTRICT, OFFICE OF ENGINEERS
JACKSONVILLE, FLORIDA

INTRACOASTAL WATERWAY
CALOOSAHATCHEE RIVER TO ANCLOTE RIVER
PROJECT CONDITION SURVEY
9-FOOT PROJECT
CUT L-1 THROUGH CUT P-41
PLAN VIEW

FILED BY D.J.M.	REVISED BY R.C.H.	DATE F	INVESTIGATOR F	DRAWING NO. F
S.R.M.	W.T.S.	SCALE AS SHOWN	DATE OCT 1998	SHEET 22 OF 23

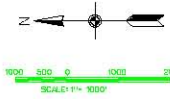
D.O. FILE NO. 41-37. 687

REVISIONS				
NO.	SYMBOL	DESCRIPTION	DATE	APPROVED



G.A.M. CENTERLINE CONTROL		
STATION	Easting	Northing
STA. 350+00.00	231,147.57	1,351,513.68

STATION	Easting	Northing	ANGLE	LENGTH	DATE
R10	231,583	1,351,940	28°08'38.02"	82°49'58.86"	3/16/98
G8	231,019	1,351,395	28°08'30.98"	82°49'05.16"	3/16/98
R2	231,592	1,350,721	28°08'28.74"	82°49'53.05"	3/16/98
G41	231,331	1,350,468	28°08'24.41"	82°49'01.97"	3/16/98
G39	231,250	1,350,539	28°08'04.37"	82°49'54.50"	3/16/98
R40	232,137	1,350,613	28°08'09.19"	82°49'56.41"	3/16/98
R38	232,874	1,350,091	28°08'40.19"	82°49'43.99"	3/16/98
G37	233,482	1,353,481	28°08'14.48"	82°49'37.00"	3/16/98
R36	234,454	1,351,019	28°07'45.07"	82°49'29.35"	3/16/98
G35	235,082	1,379,251	28°07'28.71"	82°49'18.74"	3/16/98
R34	232,383	1,370,242	28°08'53.81"	82°49'08.12"	3/16/98
R32	236,747	1,373,350	28°08'34.30"	82°49'59.77"	3/16/98
G31	236,391	1,373,309	28°08'23.88"	82°49'01.61"	3/16/98
R30	237,303	1,370,439	28°08'05.68"	82°48'57.15"	3/16/98
G29	238,118	1,368,280	28°08'44.19"	82°48'44.08"	3/16/98
R28	238,388	1,355,965	28°08'21.36"	82°48'34.25"	3/16/98
G27	239,493	1,353,732	28°08'59.50"	82°48'29.40"	3/16/98



NOTES:
1. REFER TO SHEET 1 FOR NOTES.

SEA SYSTEMS CORPORATION
3486 N.W. 27th AVE.
FONTPANO BEACH, FLORIDA 33068
DEPARTMENT OF THE ARMY
JACKSONVILLE DISTRICT, CORPS OF ENGINEERS
JACKSONVILLE, FLORIDA

INTRACASTAL WATERWAY
CALOOSAHATCHEE RIVER TO ANCLOTE RIVER
PROJECT CONDITION SURVEY
9-FOOT PROJECT
CUT L-1 THROUGH CUT P-41
PLAN VIEW

DATE	BY	REV. NO.	DESCRIPTION
10/19/98	D.J.M.	1	ISSUE FOR CONSTRUCTION