

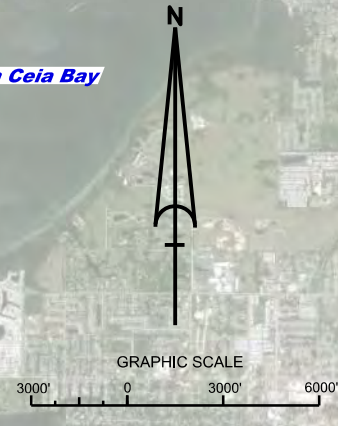
TAMPA HARBOR MULLET KEY CHANNEL (ZONE 2) HILLSBOROUGH / PINELLAS COUNTIES, FLORIDA EXAMINATION SURVEY FY18 43-FOOT PROJECT

SURVEY NOTES

- REFER TO SURVEY NO. 18-146.
- ELEVATIONS ARE IN FEET AND TENTHS AND REFER TO THE NOAA REPORTED MLLW TIDAL DATUM RELATIVE TO THE 1983-2001 TIDAL EPOCH.
- TIDAL REDUCTIONS WERE OBTAINED UTILIZING A REAL-TIME KINEMATIC (RTK) GPS AND REFERENCED TO MLLW UTILIZING A HYPACK KINEMATIC TIDE DATUM (KTD) MODEL NAMED "SPC-FL-WEST-2010-12-07.KTD".
- ALL ELEVATIONS ARE BELOW THE CHART DATUM UNLESS PRECEDED BY A (+) SIGN.
- PLANE COORDINATES ARE BASED ON THE TRANSVERSE MERCATOR PROJECTION FOR THE WEST ZONE OF FLORIDA AND REFERENCED TO NORTH AMERICAN DATUM OF 1983 (NAD83).
- ALL STATIONING REFERS TO THE CENTERLINE OF THE CHANNEL.
- THIS SURVEY WAS PERFORMED USING REAL-TIME KINEMATIC (RTK) GPS POSITIONING WITH THE FOLLOWING REFERENCE BASE LOCATIONS:
REFERENCE BASE LOCATED AT "TH-89 USE" (PID: AG0988)
REFERENCE BASE LOCATED AT "872 6384 K 2004" (OPUS PID: BB272)
TIDESTAFF LOCATED FROM "872 6367 C" (PID: AG7401)
TIDESTAFF LOCATED FROM "872 6384 E" (OPUS PID: AG7341)
- DEPTHS DEPICTED BY THIS SURVEY ARE REFERENCED TO MLLW, TIDAL EPOCH 1983-2001, AS REPORTED BY THE NATIONAL OCEANIC AND ATMOSPHERIC ADMINISTRATION (NOAA). NOAA'S VDATUM MODEL WAS USED AND CALIBRATED TO THE PUBLISHED MLLW HEIGHTS OF THE BENCH MARKS ASSOCIATED WITH THE TIDE GAGE SITES SPECIFIED BELOW:
NOAA TIDAL STATION "872 6367 C" FOR MULLET KEY CHANNEL (PID: AG7401)
- VERTICAL MEASUREMENTS WERE MADE USING A ROSS SMART SOUNDER DUAL-FREQUENCY 28/200 KHZ SINGLE-BEAM TRANSDUCER AND A R2 SONIC 2024 MULTI-BEAM SYSTEM. SOUNDINGS SHOWN ARE IN HIGH FREQUENCY.
- VESSEL DATE OF SURVEY CUT
SV JACKSONVILLE 16-18 MAY 2018 MULLET KEY CUT
- AIDS TO NAVIGATION WERE LOCATED DURING THIS SURVEY.
- THE INFORMATION DEPICTED ON THIS MAP REPRESENTS THE RESULTS OF SURVEYS MADE ON THE DATES INDICATED ABOVE AND CAN ONLY BE CONSIDERED AS INDICATING THE GENERAL CONDITIONS AT THAT TIME. THIS CHART IS SOLELY FOR THE DISTRIBUTION OF AVAILABLE DEPTHS AT THE TIME OF THE SURVEY.
- SURVEY ACCURACY PERFORMANCE STANDARDS, QUALITY CONTROL, AND QUALITY ASSURANCE REQUIREMENTS WERE FOLLOWED DURING THIS SURVEY IN ACCORDANCE WITH USACE EM 1110-2-1003, HYDROGRAPHIC SURVEYING, 30 NOV 2013.

SURVEY ZONE	CUTS
2	MULLET KEY CHANNEL CUT-A (TB), CUT-B (TB)
3	CUT-C (TB), CUT-D (TB), CUT-E (TB)
4	CUT-F, CUT-G, GADSDEN POINT CUT
5	CUT-J, CUT-K
6	CUT-A (HB), CUT-C (HB), CUT-D (HB)

LEGEND	
	MONUMENT
	LIGHTED BEACON
	GREEN DAYBEACON
	RED DAYBEACON
	RED LIGHTED BUOY
	GREEN LIGHTED BUOY
	CAN BUOY
	NUN BUOY
	TIDE STAFF
	PROJECT DEPTH



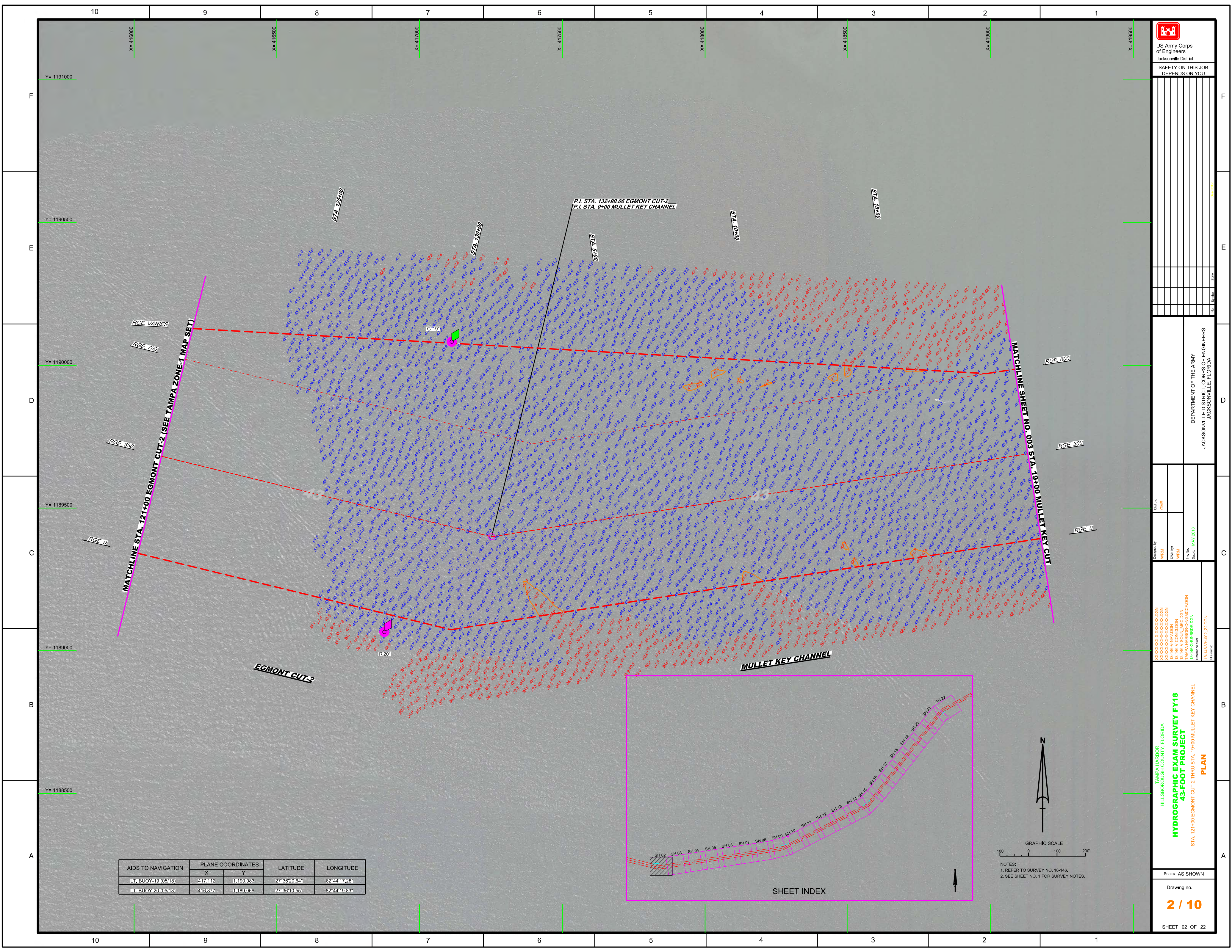
US Army Corps of Engineers
Jacksonville District
SAFETY ON THIS JOB
DEPENDS ON YOU

DEPARTMENT OF THE ARMY
JACKSONVILLE DISTRICT, CORPS OF ENGINEERS
JACKSONVILLE, FLORIDA

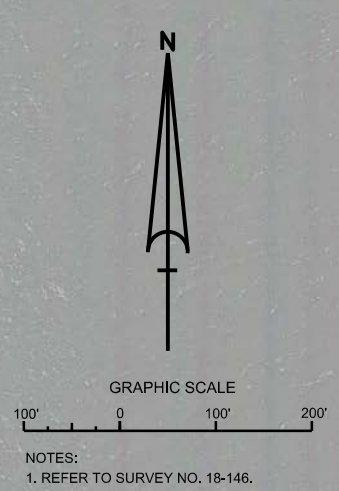
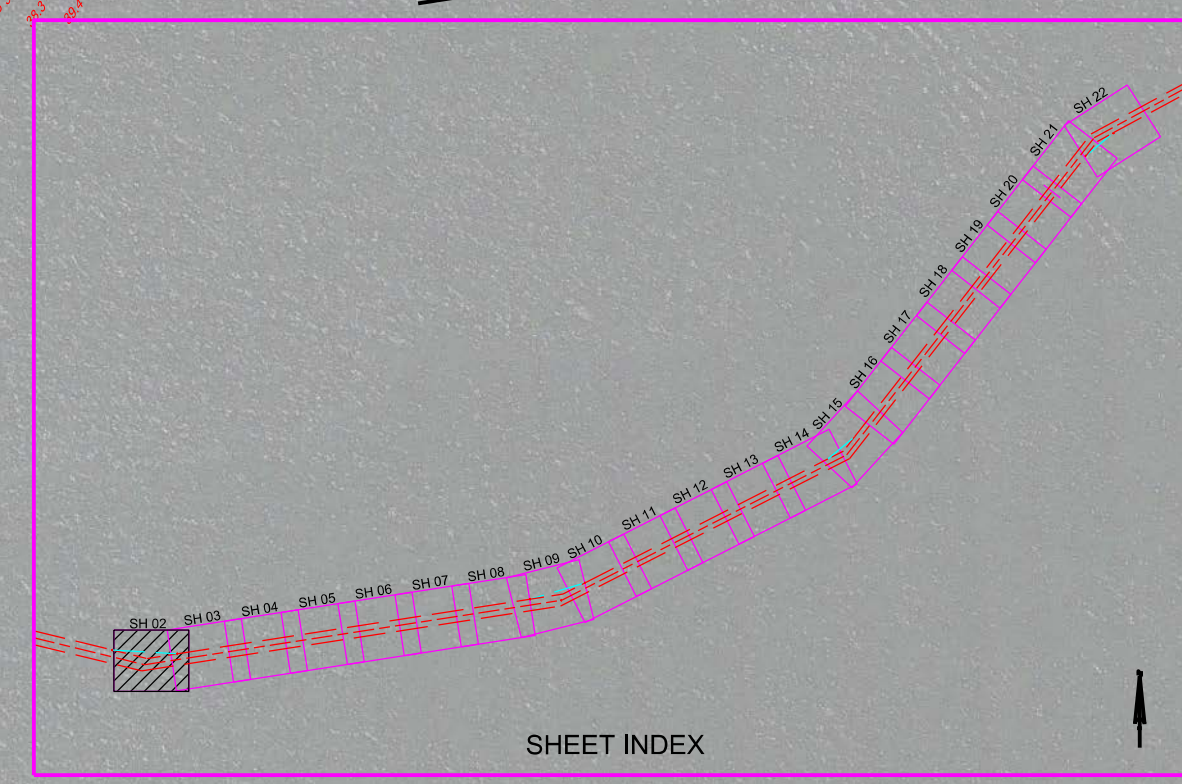
Drawn by: GHR
Checked by: GHR
Date: MAY 2018


TAMPA HARBOR
HILLSBOROUGH COUNTY, FLORIDA
HYDROGRAPHIC EXAM SURVEY FY18
43-FOOT PROJECT
INDEX, LOCATION AND VICINITY
MAP

Scale: AS SHOWN
Drawing no.
1 / 10
SHEET 01 OF 22



AIDS TO NAVIGATION	PLANE COORDINATES		LATITUDE	LONGITUDE
	X	Y		
LT BUOY-19 (0518)	417412	1190083	27°59'20.64"	82°44'17.28"
LT BUOY-20 (0518)	416377	1189066	27°58'10.55"	82°44'19.83"





US Army Corps of Engineers
 Jacksonville District
 SAFETY ON THIS JOB
 DEPENDS ON YOU

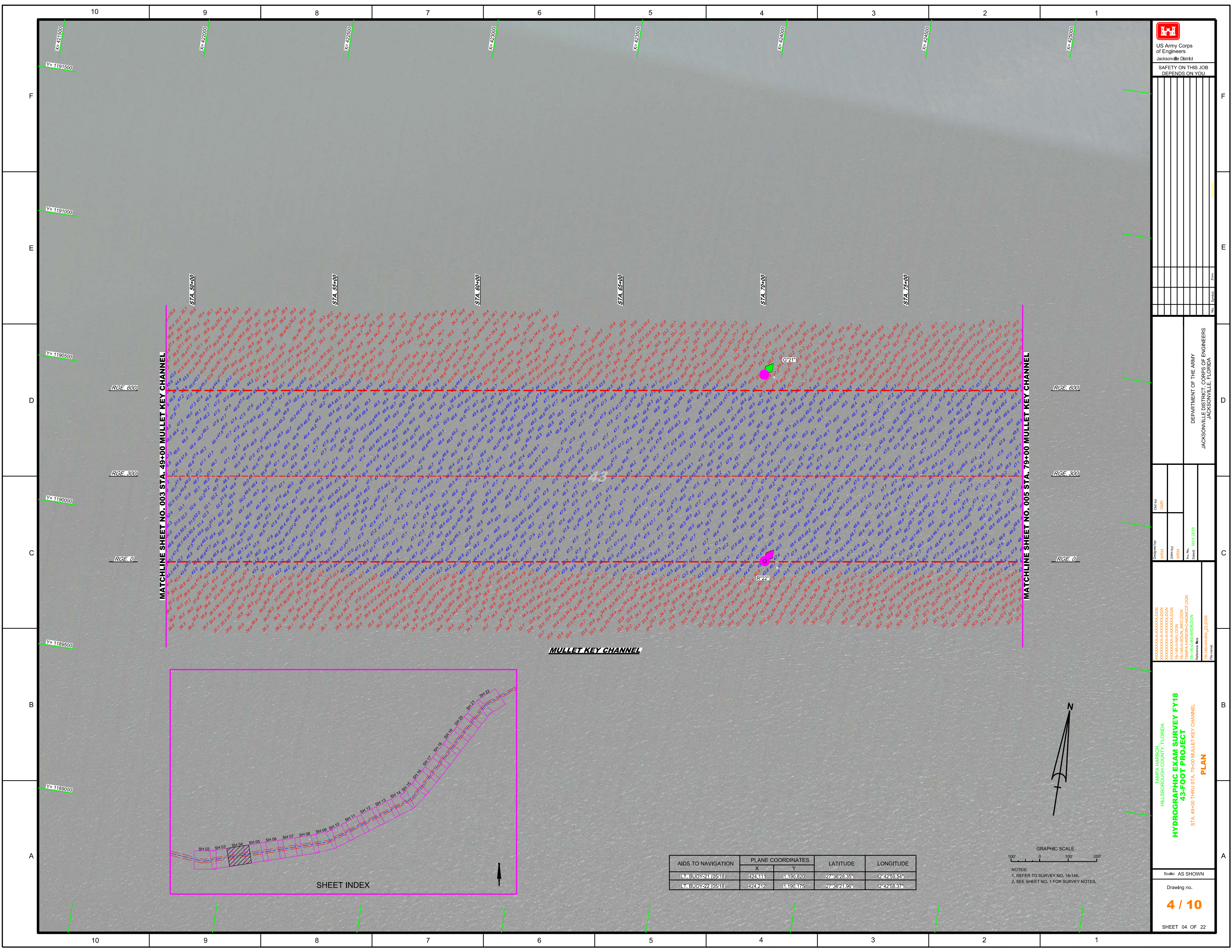
DEPARTMENT OF THE ARMY
 JACKSONVILLE DISTRICT, CORPS OF ENGINEERS
 JACKSONVILLE, FLORIDA

Checked By: GHR
 Designed By: WRM
 Drawn By: WRM
 Date: MAY 2018

XXXXXXXXXXXXXXXXXXXX
 XXXXXXXXXXXXXXXXXXXX
 XXXXXXXXXXXXXXXXXXXX
 18-146-AV-DOON
 18-146-AV-CONSLDGN
 TAMPA HARBOR-CANAL DOON
 18-146-GS-BR-DOON
 Reference: 18-146-HAR-02_ZLDOON

TAMPA HARBOR
 HILLSBOROUGH COUNTY, FLORIDA
HYDROGRAPHIC EXAM SURVEY FY18
43-FOOT PROJECT
 STA. 121+00 EGMONT CUT-2 THRU STA. 19+00 MULLET KEY CHANNEL
PLAN

Scale: AS SHOWN
 Drawing no.
2 / 10
 SHEET 02 OF 22



US Army Corps of Engineers

 Jacksonville District

 SAFETY ON THIS JOB

 DEPENDS ON YOU

DEPARTMENT OF THE ARMY

 JACKSONVILLE DISTRICT, CORPS OF ENGINEERS

 JACKSONVILLE, FLORIDA

Drawn by: GHR

 Checked by: GHR

 Date: MAY 2018

TAMPA HARBOR

 HILLSBOROUGH COUNTY, FLORIDA

HYDROGRAPHIC EXAM SURVEY FY18

43-FOOT PROJECT

 STA. 49+00 THRU STA. 79+00 MULLET KEY CHANNEL

PLAN

Scale: AS SHOWN

 Drawing no.

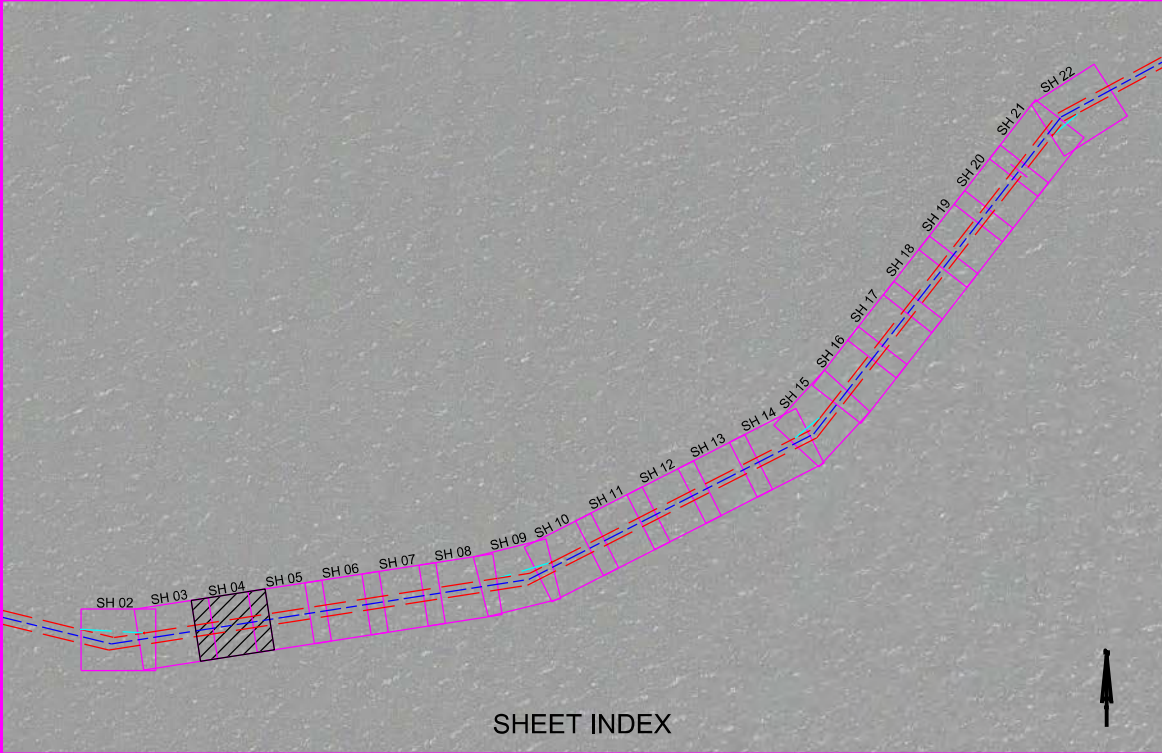
4 / 10

 SHEET 04 OF 22

MATCHLINE SHEET NO. 003 STA. 49+00 MULLET KEY CHANNEL

MATCHLINE SHEET NO. 005 STA. 79+00 MULLET KEY CHANNEL

MULLET KEY CHANNEL



AIDS TO NAVIGATION	PLANE COORDINATES		LATITUDE	LONGITUDE
	X	Y		
LT BUOY-21 (0518)	424.111	1.190.820	27°36'28.35"	82°42'59.54"
LT BUOY-22 (0518)	424.212	1.190.175	27°36'21.96"	82°42'58.37"



NOTES:

 1. REFER TO SURVEY NO. 18-146.

 2. SEE SHEET NO. 1 FOR SURVEY NOTES.

