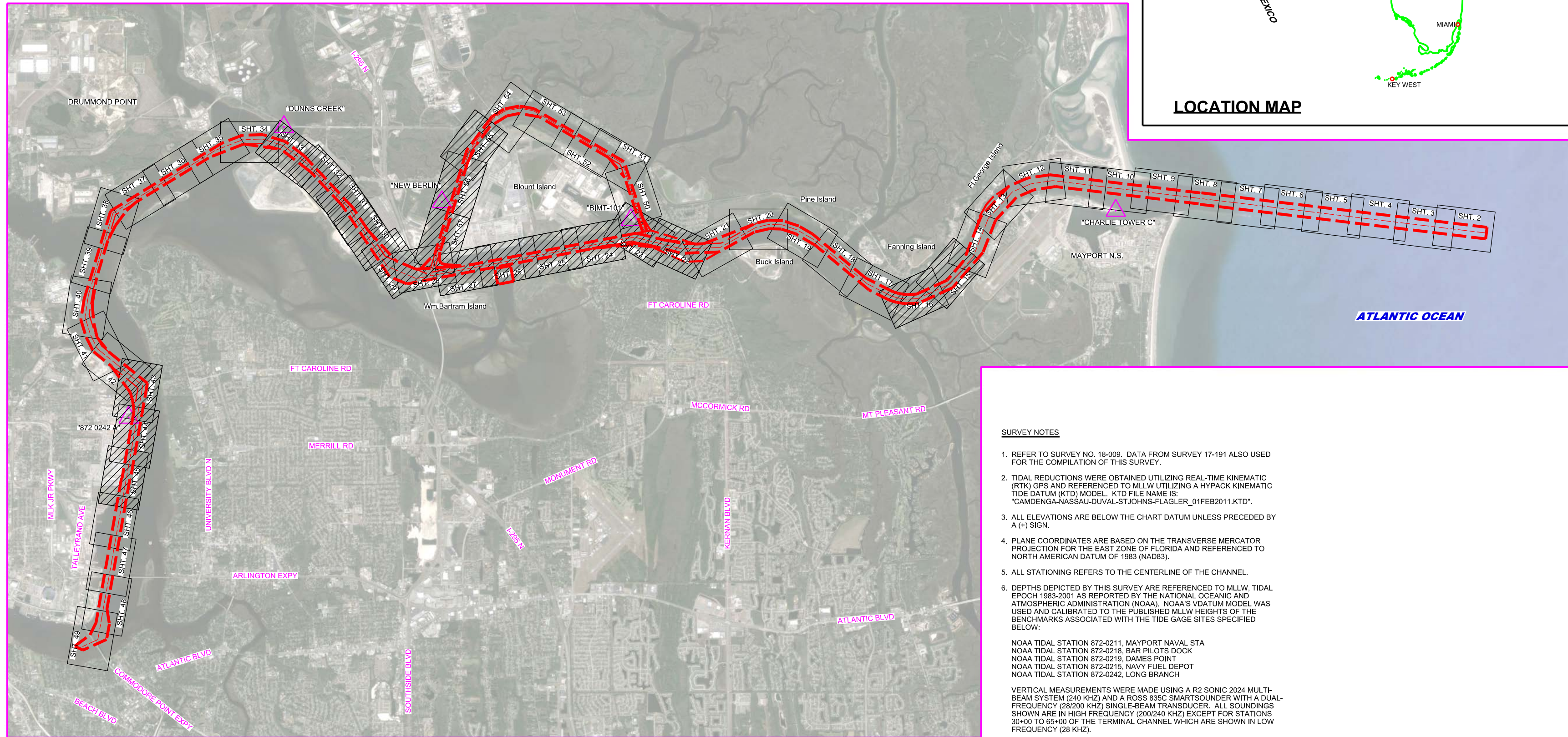


# JACKSONVILLE HARBOR, FLORIDA

## PARTIAL EXAM SURVEY FY18



**SURVEY NOTES**

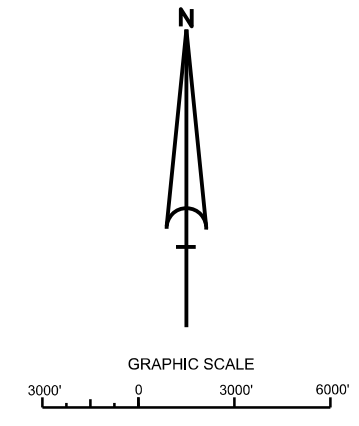
- REFER TO SURVEY NO. 18-009. DATA FROM SURVEY 17-191 ALSO USED FOR THE COMPILATION OF THIS SURVEY.
- TIDAL REDUCTIONS WERE OBTAINED UTILIZING REAL-TIME KINEMATIC (RTK) GPS AND REFERENCED TO MLLW UTILIZING A HYPACK KINEMATIC TIDE DATUM (KTD) MODEL. KTD FILE NAME IS: "CAMDENGA-NASSAU-DUVAL-STJOHNS-FLAGLER\_01FEB2011.KTD".
- ALL ELEVATIONS ARE BELOW THE CHART DATUM UNLESS PRECEDED BY A (+) SIGN.
- PLANE COORDINATES ARE BASED ON THE TRANSVERSE MERCATOR PROJECTION FOR THE EAST ZONE OF FLORIDA AND REFERENCED TO NORTH AMERICAN DATUM OF 1983 (NAD83).
- ALL STATIONING REFERS TO THE CENTERLINE OF THE CHANNEL.
- DEPTHS DEPICTED BY THIS SURVEY ARE REFERENCED TO MLLW, TIDAL EPOCH 1983-2001 AS REPORTED BY THE NATIONAL OCEANIC AND ATMOSPHERIC ADMINISTRATION (NOAA). NOAA'S VDATUM MODEL WAS USED AND CALIBRATED TO THE PUBLISHED MLLW HEIGHTS OF THE BENCHMARKS ASSOCIATED WITH THE TIDE GAGE SITES SPECIFIED BELOW:  
 NOAA TIDAL STATION 872-0211, MAYPORT NAVAL STA  
 NOAA TIDAL STATION 872-0218, BAR PILOTS DOCK  
 NOAA TIDAL STATION 872-0219, DAMES POINT  
 NOAA TIDAL STATION 872-0215, NAVY FUEL DEPOT  
 NOAA TIDAL STATION 872-0242, LONG BRANCH

VERTICAL MEASUREMENTS WERE MADE USING A R2 SONIC 2024 MULTI-BEAM SYSTEM (240 KHZ) AND A ROSS 835C SMARTSOUNDER WITH A DUAL-FREQUENCY (25/120) KHZ SINGLE-BEAM TRANSDUCER. ALL SOUNDINGS SHOWN ARE IN HIGH FREQUENCY (200/240 KHZ) EXCEPT FOR STATIONS 30+00 TO 65+00 OF THE TERMINAL CHANNEL WHICH ARE SHOWN IN LOW FREQUENCY (28 KHZ).

VESSEL	DATE OF SURVEY	CUT
SB-46	21 SEP 2017	CUT-9
SB-46	10 OCT 2017	CUT-40 & CUT-41
SB-46	12 OCT 2017	CUT-G
SB-46	20 OCT 2017	CUT-44 & CUT-45
SB-46	23 OCT 2017	CUT43, CUT-G, CUT-F
SB-46	24 OCT 2017	CUT-42
SB-46	25 OCT 2017	TERMINAL CHANNEL

LEGEND	
	MONUMENT
	LIGHTED BEACON
	GREEN DAYBEACON
	RED DAYBEACON
	RED LIGHTED BUOY
	GREEN LIGHTED BUOY
	CAN BUOY
	NUN BUOY
	TIDE STAFF
	PROJECT DEPTH

AUTHORIZED PROJECT DEPTH	
42 FT	CUT - 3 (BAR CUT), STA. 0+00 THRU STA. 210+00
40 FT	CUT - 3 (BAR CUT) STA. 210+00 THRU TERMINAL CHANNEL STA. 65+00.
34 FT	TERMINAL CHANNEL, STA. 65+00 THRU STA. 186+21 (APPROX. 1200 FEET UPSTREAM FROM THE HART BRIDGE NEAR COMMODORE POINT).
30 FT	CUT-A, STA. 0+00 THRU 53+10.21
38 FT	OLD RIVER BLOUNT ISLAND (WESTSIDE) CHANNEL CUT-F, STA. 10+00 - NEAR WOODEN FISHING BRIDGE PIER THRU INTERSECTION OF CUT - 42 (DAMES PT. - FULTON CUT - OFF



US Army Corps of Engineers  
Jacksonville District  
SAFETY ON THIS JOB DEPENDS ON YOU

DEPARTMENT OF THE ARMY  
JACKSONVILLE DISTRICT, CORPS OF ENGINEERS  
JACKSONVILLE, FLORIDA

DESIGNED BY: WRM  
CHECKED BY: GHR  
DATE: OCT 2017

JACKSONVILLE HARBOR, FLORIDA  
PARTIAL EXAM SURVEY FY18  
34, 38, AND 40-FOOT PROJECT  
INDEX, LOCATION AND VICINITY MAP

Scale: AS SHOWN  
Drawing no. 1 / 21  
SHEET 01 OF 57

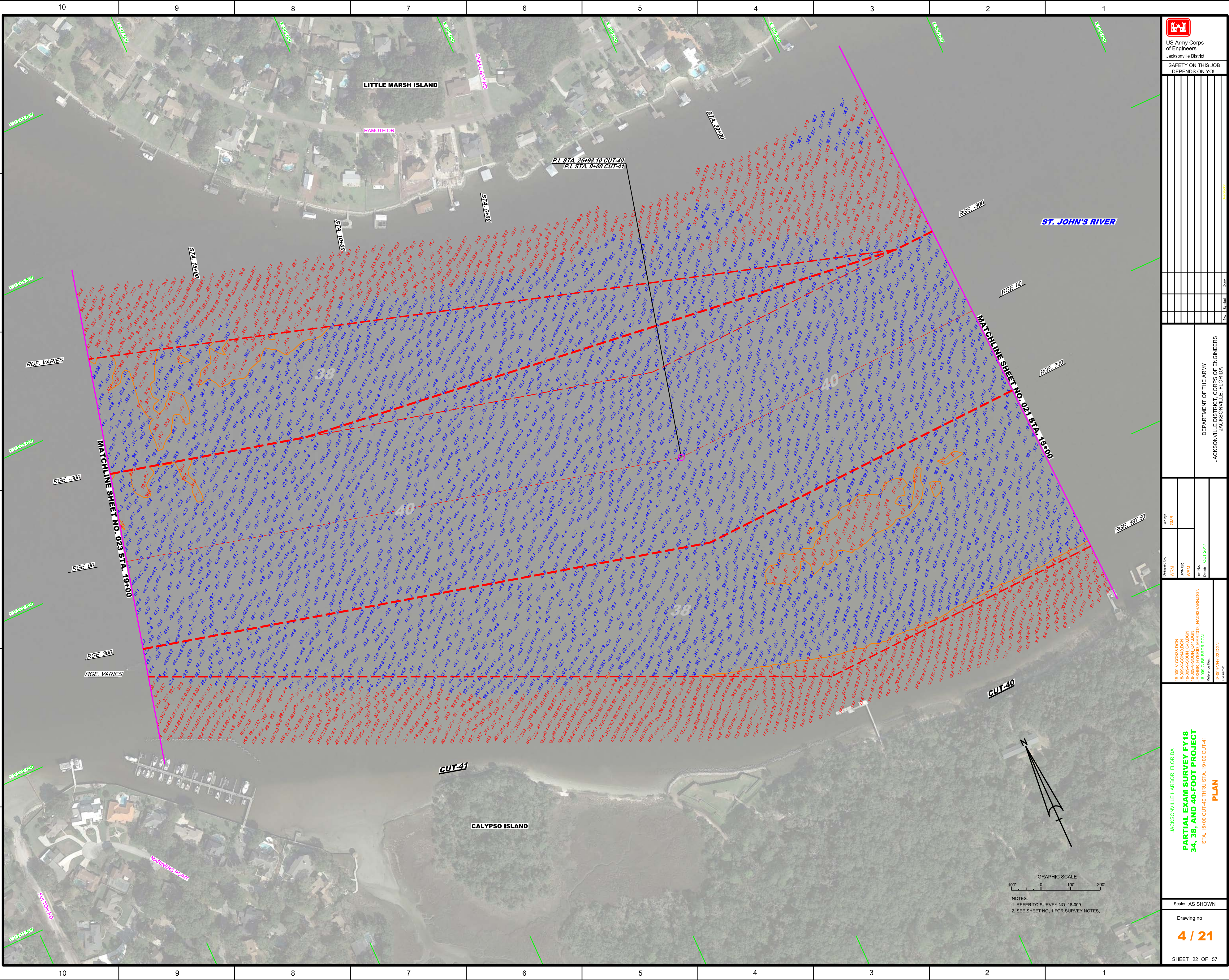












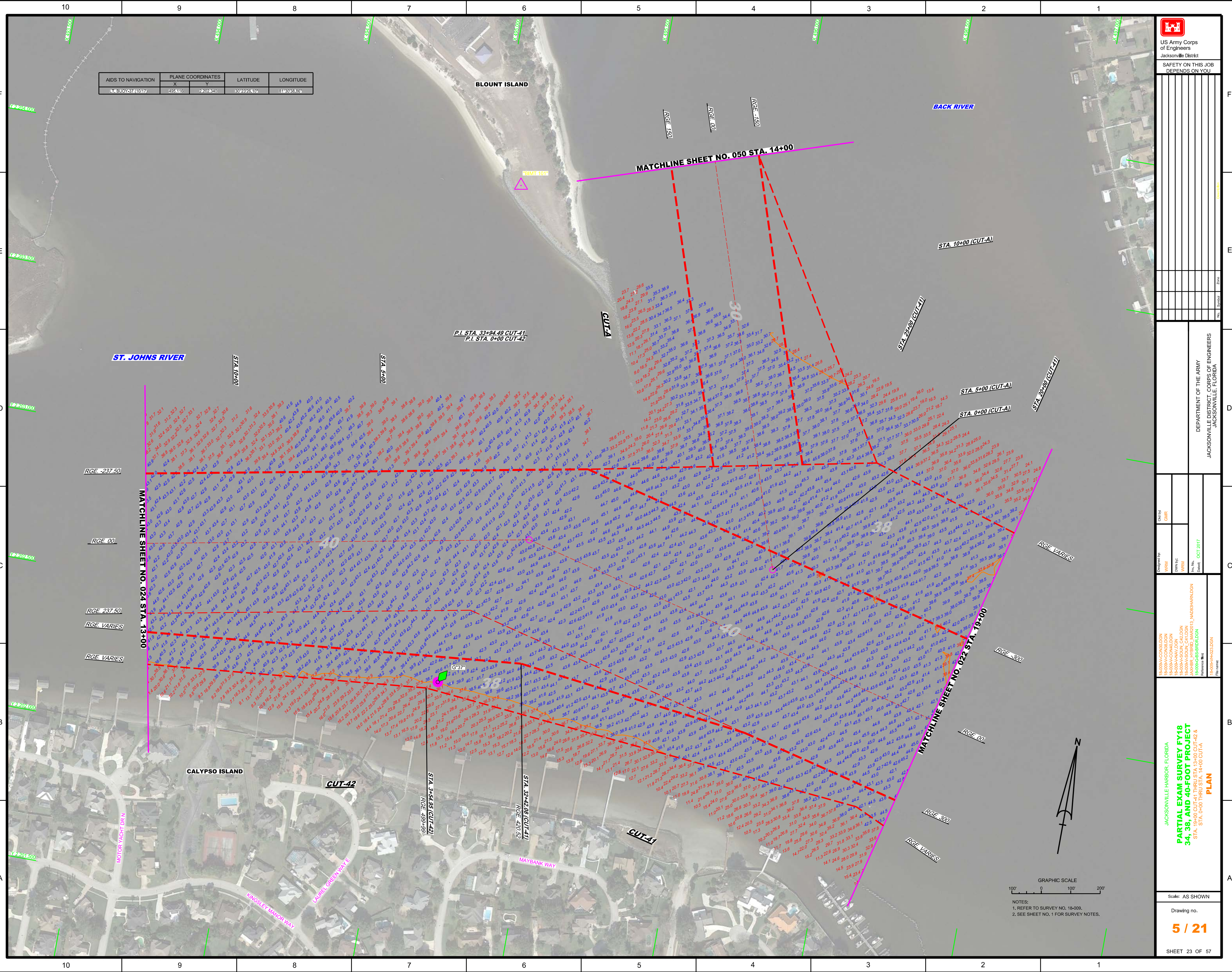


AIDS TO NAVIGATION	PLANE COORDINATES		LATITUDE	LONGITUDE
	X	Y		
BUOY 37 (1017)	455116	2202340	30°22'28.10"	81°39'38.86"

**US Army Corps of Engineers**  
Jacksonville District

**SAFETY ON THIS JOB**  
DEPENDS ON YOU

DEPARTMENT OF THE ARMY  
JACKSONVILLE DISTRICT, CORPS OF ENGINEERS  
JACKSONVILLE, FLORIDA



GRAPHIC SCALE  
0 100 200

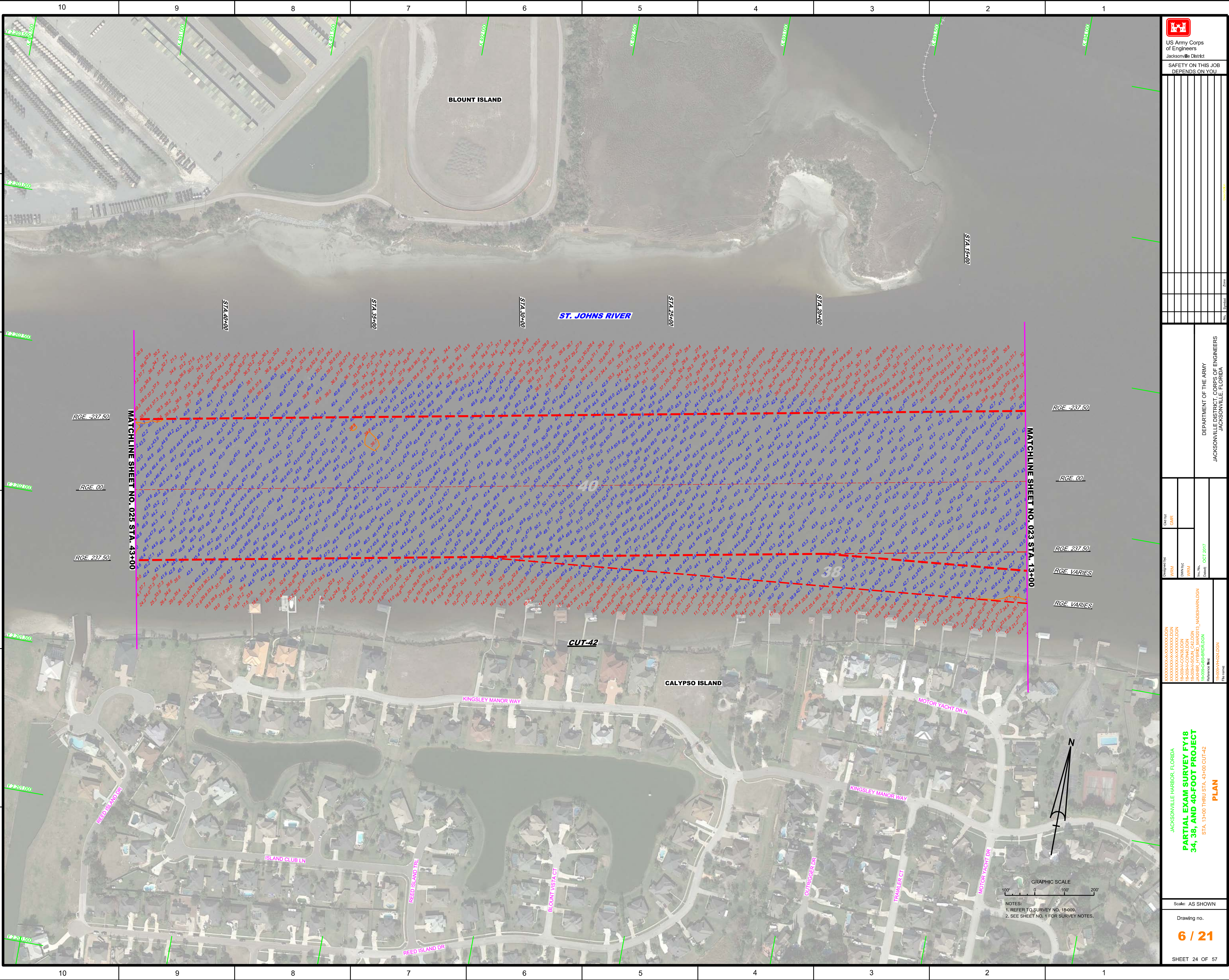
NOTES:  
1. REFER TO SURVEY NO. 18-009.  
2. SEE SHEET NO. 1 FOR SURVEY NOTES.

Checked by: GHR  
Designed by: WRM  
Drawn by: WRM  
Reviewed by: JAWBR, JFRBD, MACKO, JACOBSON, WARDEN  
Reference Map: 18-009-PAZLSDN  
Date: OCT 2017

JACKSONVILLE HARBOR, FLORIDA  
**PARTIAL EXAM SURVEY FY18**  
**34, 38, AND 40-FOOT PROJECT**  
STA. 18+00 CUT-41 THRU STA 13+00 CUT-42 & STA. 0+00 THRU STA. 14+00 CUT-A  
**PLAN**

Scale: AS SHOWN  
Drawing no. **5 / 21**  
SHEET 23 OF 57





GRAPHIC SCALE  
0 100' 200'

NOTES:  
1. REFER TO SURVEY NO. 18-000.  
2. SEE SHEET NO. 1 FOR SURVEY NOTES.

MATCHLINE SHEET NO. 023 STA. 43+00

MATCHLINE SHEET NO. 023 STA. 13+00

RGE. -237.50  
RGE. 00  
RGE. 237.50

RGE. -237.50  
RGE. 00  
RGE. 237.50  
RGE. VARIES  
RGE. VARIES

ST. JOHNS RIVER

CUT-42

CALYPSO ISLAND

BLOUNT ISLAND

REED ISLAND DR

ISLAND CLUB LN

KINGSLEY MANOR WAY

MOTOR YACHT DR

KINGSLEY MANOR WAY

OUTRIGGER DR

TRAILER CT

MOTOR YACHT DR

STA. 40+00

STA. 35+00

STA. 30+00

ST. JOHNS RIVER

STA. 25+00

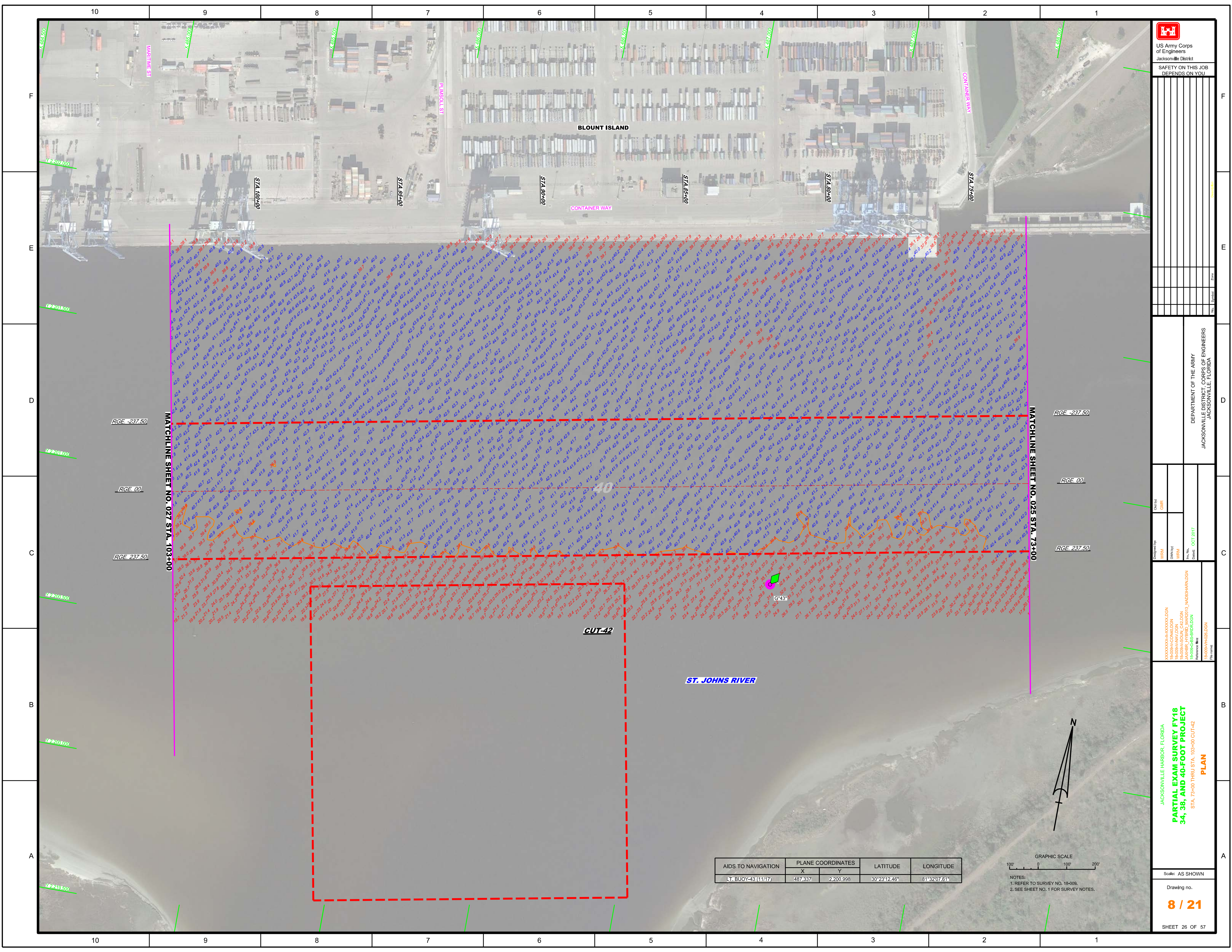
STA. 20+00


STA. 15+00









  
 US Army Corps of Engineers  
 Jacksonville District  
 SAFETY ON THIS JOB  
 DEPENDS ON YOU

DEPARTMENT OF THE ARMY  
 JACKSONVILLE DISTRICT, CORPS OF ENGINEERS  
 JACKSONVILLE, FLORIDA

Designed by: WRM  
 Drawn by: WRM  
 Checked: OCT 2017  
 Reference files:  
 R:\000000\A\000000\DCN  
 R:\000000\A\000000\DCN  
 R:\000000\A\000000\DCN  
 R:\000000\A\000000\DCN  
 R:\000000\A\000000\DCN

JACKSONVILLE HARBOR, FLORIDA  
**PARTIAL EXAM SURVEY FY18  
 34, 38, AND 40-FOOT PROJECT**  
 STA. 73+00 THRU STA. 103+00 CUT-42  
**PLAN**

Scale: AS SHOWN  
 Drawing no.  
**8 / 21**  
 SHEET 26 OF 57

AIDS TO NAVIGATION	PLANE COORDINATES		LATITUDE	LONGITUDE
	X	Y		
LT. BUOY-43 (1117)	487.337	2,200.998	30°23'12.46"	81°32'07.61"

GRAPHIC SCALE  
 100' 0 100' 200'  
 NOTES:  
 1. REFER TO SURVEY NO. 18-000.  
 2. SEE SHEET NO. 1 FOR SURVEY NOTES.







