

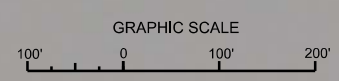
P.I. STA. 10+48.56 CUT-54
P.I. STA. 0+00 CUT-55

P.I. STA. 12+92.05 CUT-53
P.I. STA. 0+00 CUT-54


ST. JOHNS RIVER

"DANGER SHOAL SIGN"

AIDS TO NAVIGATION	PLANE COORDINATES		LATITUDE	LONGITUDE
	X	Y		
NAU0001A(0310)	458405	2416500	3222241.59	0182037.51
SIGN0210	459155	2416501	3222243.59	0182039.02



NOTES:
1. REFER TO SURVEY NO. 18-001.
2. SEE SHEET NO. 1 FOR SURVEY NOTES.



US Army Corps of Engineers
Jacksonville District

SAFETY ON THIS JOB
DEPENDS ON YOU

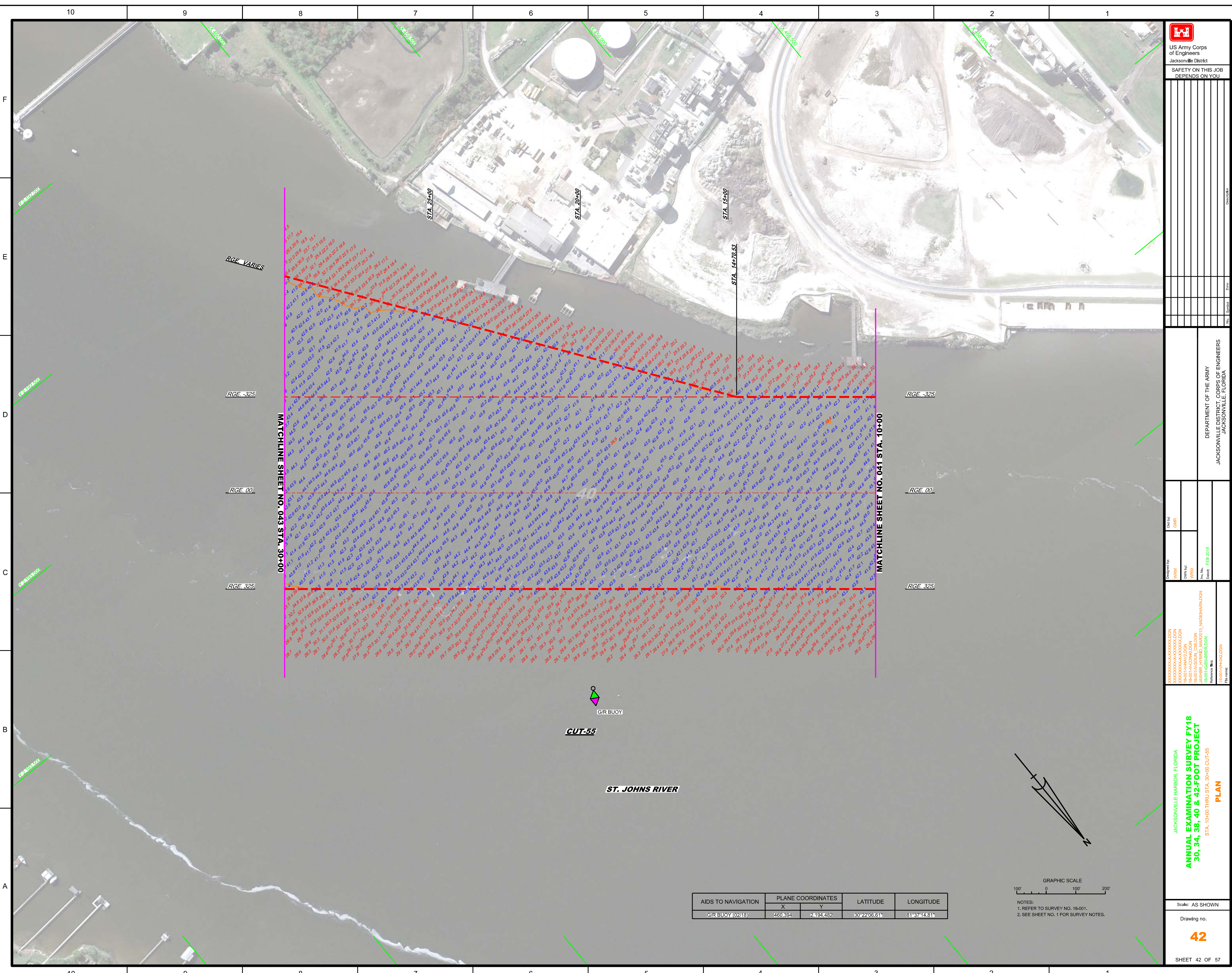
DESIGNED BY: WRM
CHECKED BY: GHR
DATE: FEB 2018

JACKSONVILLE HARBOR, FLORIDA
ANNUAL EXAMINATION SURVEY FY18
30, 34, 38, 40 & 42-FOOT PROJECT
STA. 10+00 CUT-53 THRU STA. 10+00 CUT-55
PLAN

Scale: AS SHOWN

Drawing no.
41

SHEET 41 OF 57



US Army Corps of Engineers
Jacksonville District

SAFETY ON THIS JOB
DEPENDS ON YOU

No.	Date	Revision

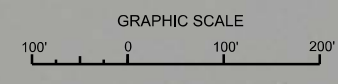
DEPARTMENT OF THE ARMY
JACKSONVILLE DISTRICT, CORPS OF ENGINEERS
JACKSONVILLE, FLORIDA

Designed by: **VRM**
Checked by: **GHR**
Drawn by: **VRM**
Printed by: **VRM**
Project No: **18001-HV-HALDEN**
Revision No: **18001-HV-HALDEN**
Revision Date: **FEB 2018**

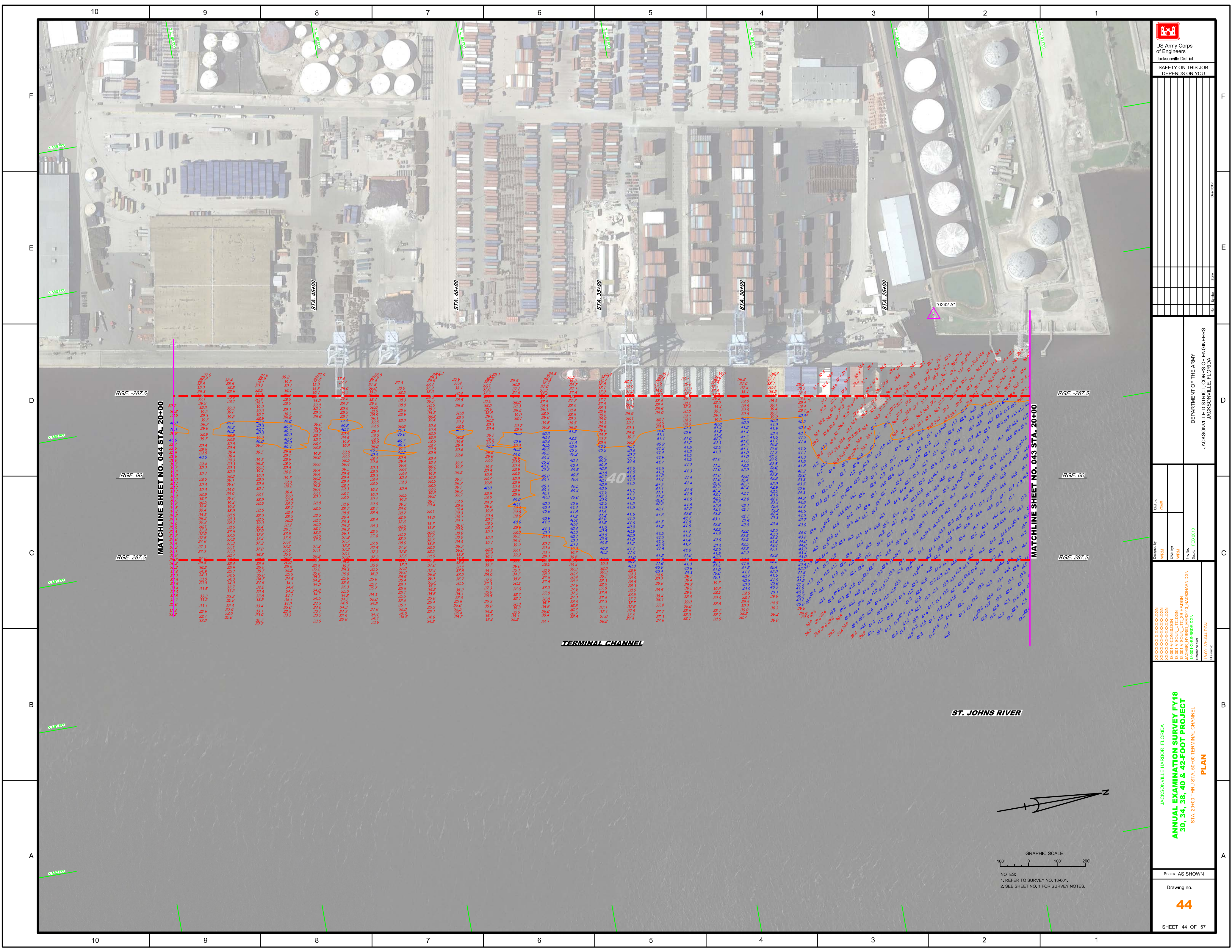
JACKSONVILLE HARBOR, FLORIDA
ANNUAL EXAMINATION SURVEY FY18
30, 34, 38, 40 & 42-FOOT PROJECT
STA. 10+00 THRU STA. 30+00 CUT-55
PLAN

Scale: AS SHOWN
Drawing no. **42**
SHEET 42 OF 57

AIDS TO NAVIGATION	PLANE COORDINATES		LATITUDE	LONGITUDE
	X	Y		
G/R BUOY (02/18)	460,394	2,194,482	30°22'06.61"	81°37'14.81"



NOTES:
1. REFER TO SURVEY NO. 18-001.
2. SEE SHEET NO. 1 FOR SURVEY NOTES.



US Army Corps of Engineers

 Jacksonville District

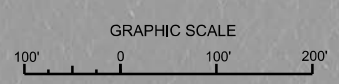
 SAFETY ON THIS JOB

 DEPENDS ON YOU

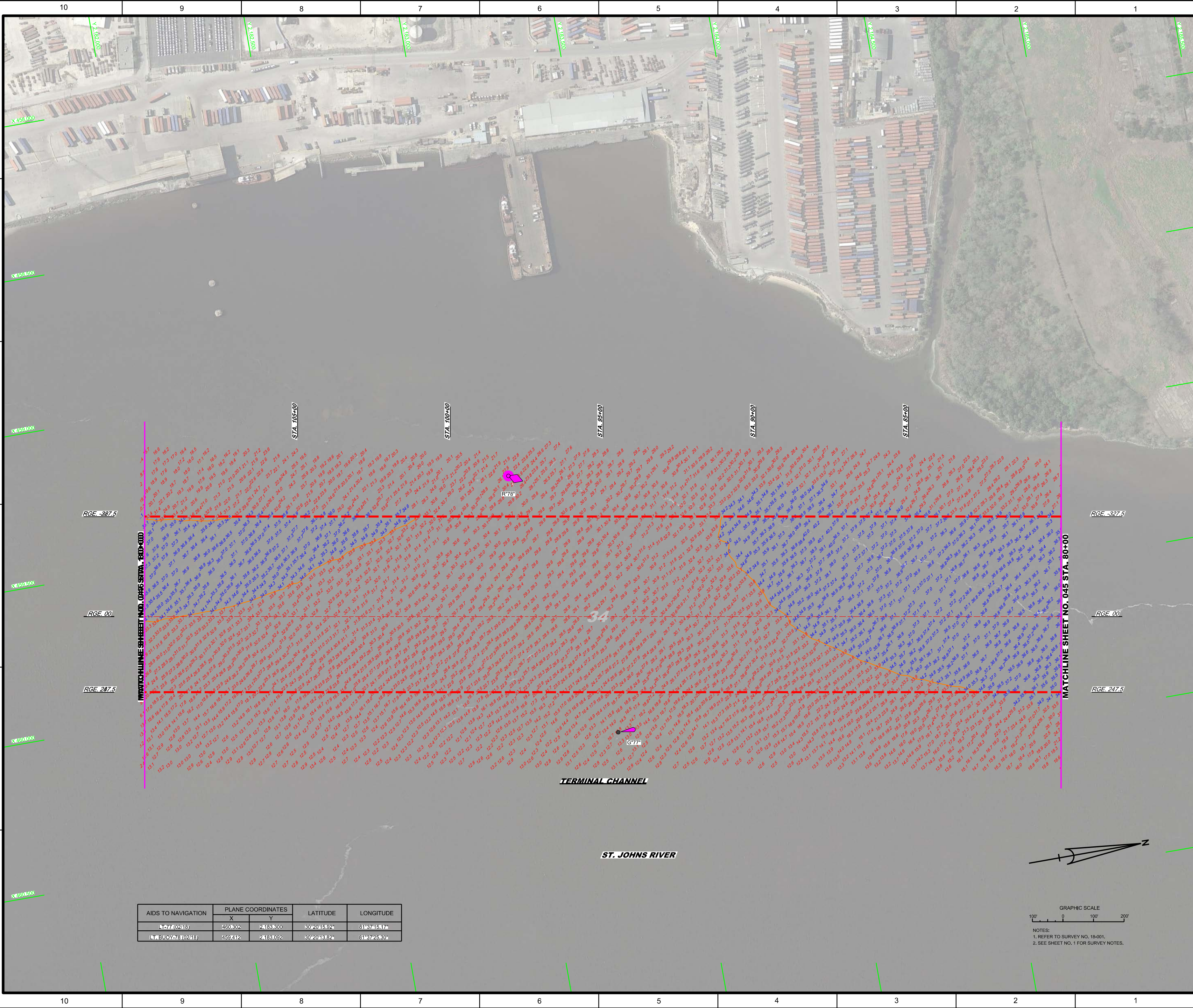
JACKSONVILLE HARBOR, FLORIDA ANNUAL EXAMINATION SURVEY FY18 30, 34, 38, 40 & 42-FOOT PROJECT STA. 20+00 THRU STA. 50+00 TERMINAL CHANNEL PLAN	Drawn by: GHR Checked by: GHR Date: FEB 2018
--	--

JACKSONVILLE HARBOR, FLORIDA
 ANNUAL EXAMINATION SURVEY FY18
 30, 34, 38, 40 & 42-FOOT PROJECT
 STA. 20+00 THRU STA. 50+00 TERMINAL CHANNEL
PLAN

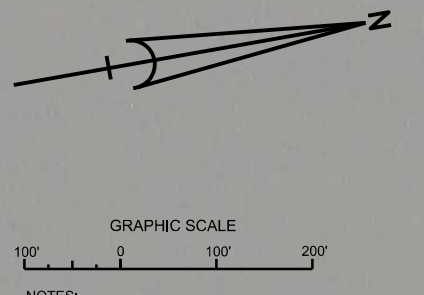
Scale: AS SHOWN
 Drawing no. **44**
 SHEET 44 OF 57




NOTES:
 1. REFER TO SURVEY NO. 18-001.
 2. SEE SHEET NO. 1 FOR SURVEY NOTES.



AIDS TO NAVIGATION	PLANE COORDINATES		LATITUDE	LONGITUDE
	X	Y		
LT#7 (0218)	460302	2483300	30°20'15.92"	81°37'45.17"
LT# BUOY 78 (0218)	459412	2483302	30°20'18.92"	81°37'45.80"

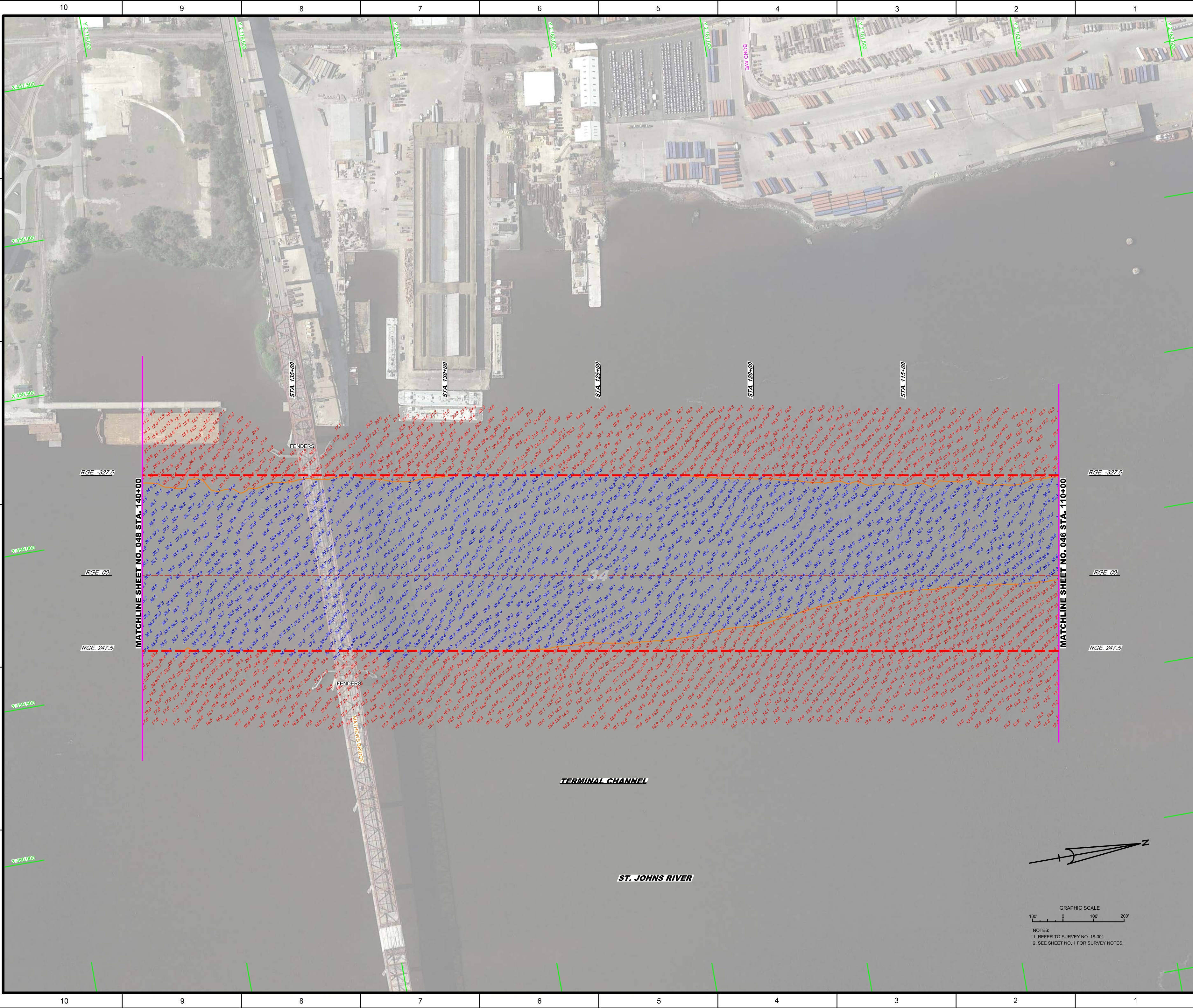


NOTES:
 1. REFER TO SURVEY NO. 18-001.
 2. SEE SHEET NO. 1 FOR SURVEY NOTES.

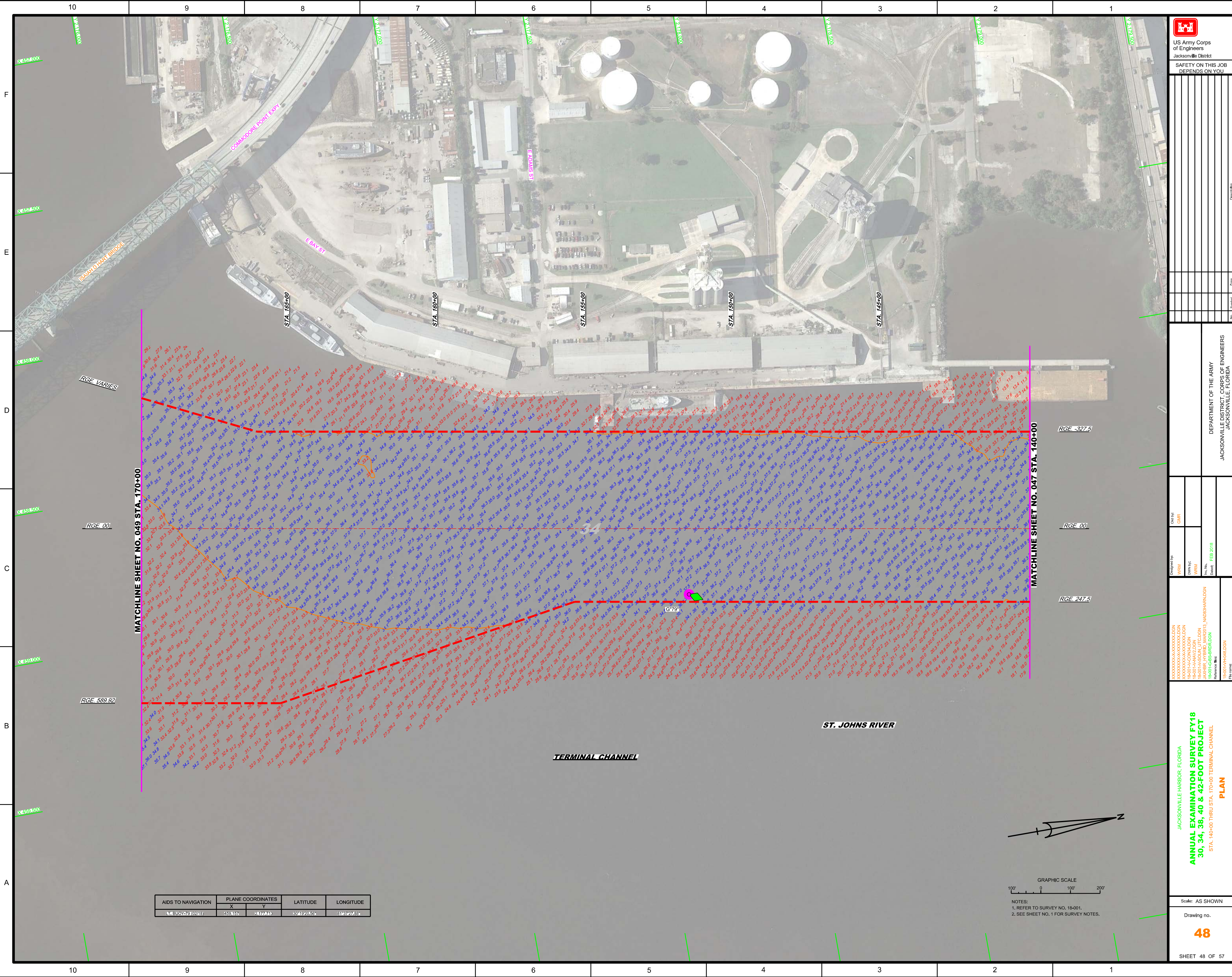


US Army Corps of Engineers
 Jacksonville District
 SAFETY ON THIS JOB
 DEPENDS ON YOU

<p>DESIGNED BY: WRM CHECKED BY: GHR DRAWN BY: WRM DATE: FEB 2018</p>	<p>DEPARTMENT OF THE ARMY JACKSONVILLE DISTRICT, CORPS OF ENGINEERS JACKSONVILLE, FLORIDA</p>
<p>JACKSONVILLE HARBOR, FLORIDA ANNUAL EXAMINATION SURVEY FY18 30, 34, 38, 40 & 42-FOOT PROJECT STA. 80+00 THRU STA. 110+00 TERMINAL CHANNEL PLAN</p>	
<p>Scale: AS SHOWN Drawing no. 46 SHEET 46 OF 57</p>	



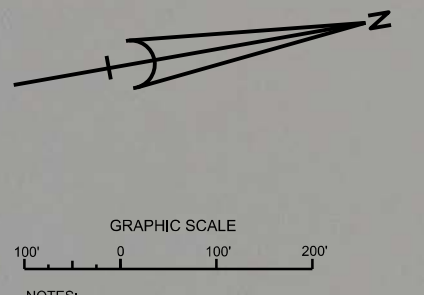
<p>US Army Corps of Engineers Jacksonville District</p>	
<p>SAFETY ON THIS JOB DEPENDS ON YOU</p>	
<p>DEPARTMENT OF THE ARMY JACKSONVILLE DISTRICT, CORPS OF ENGINEERS JACKSONVILLE, FLORIDA</p>	
<p>Drawn by: GHK</p>	<p>Checked by: GHK</p>
<p>Designed by: WRM</p>	<p>Reviewed by: WRM</p>
<p>Drawn by: WRM</p>	<p>Reviewed by: WRM</p>
<p>Project: 18-001-HARBOR-DGN</p>	<p>Date: FEB 2018</p>
<p>Reference: 18-001-HARBOR-DGN</p>	<p>Scale: AS SHOWN</p>
<p>JACKSONVILLE HARBOR, FLORIDA ANNUAL EXAMINATION SURVEY FY18 30, 34, 38, 40 & 42-FOOT PROJECT STA. 110+00 THRU STA. 140+00 TERMINAL CHANNEL PLAN</p>	
<p>NOTES: 1. REFER TO SURVEY NO. 18-001. 2. SEE SHEET NO. 1 FOR SURVEY NOTES.</p>	
<p>Drawing no. 47</p>	
<p>SHEET 47 OF 57</p>	



Matchline data table showing stationing and RGE values:

Station	RGE
STA. 140+00	RGE 589.92
STA. 145+00	RGE 00
STA. 150+00	RGE 327.5
STA. 155+00	RGE 00
STA. 160+00	RGE 00
STA. 165+00	RGE 00
STA. 170+00	RGE 247.5

AIDS TO NAVIGATION	PLANE COORDINATES		LATITUDE	LONGITUDE
	X	Y		
BUOY 70 (213)	459457	2477743	304920.59	818327.54



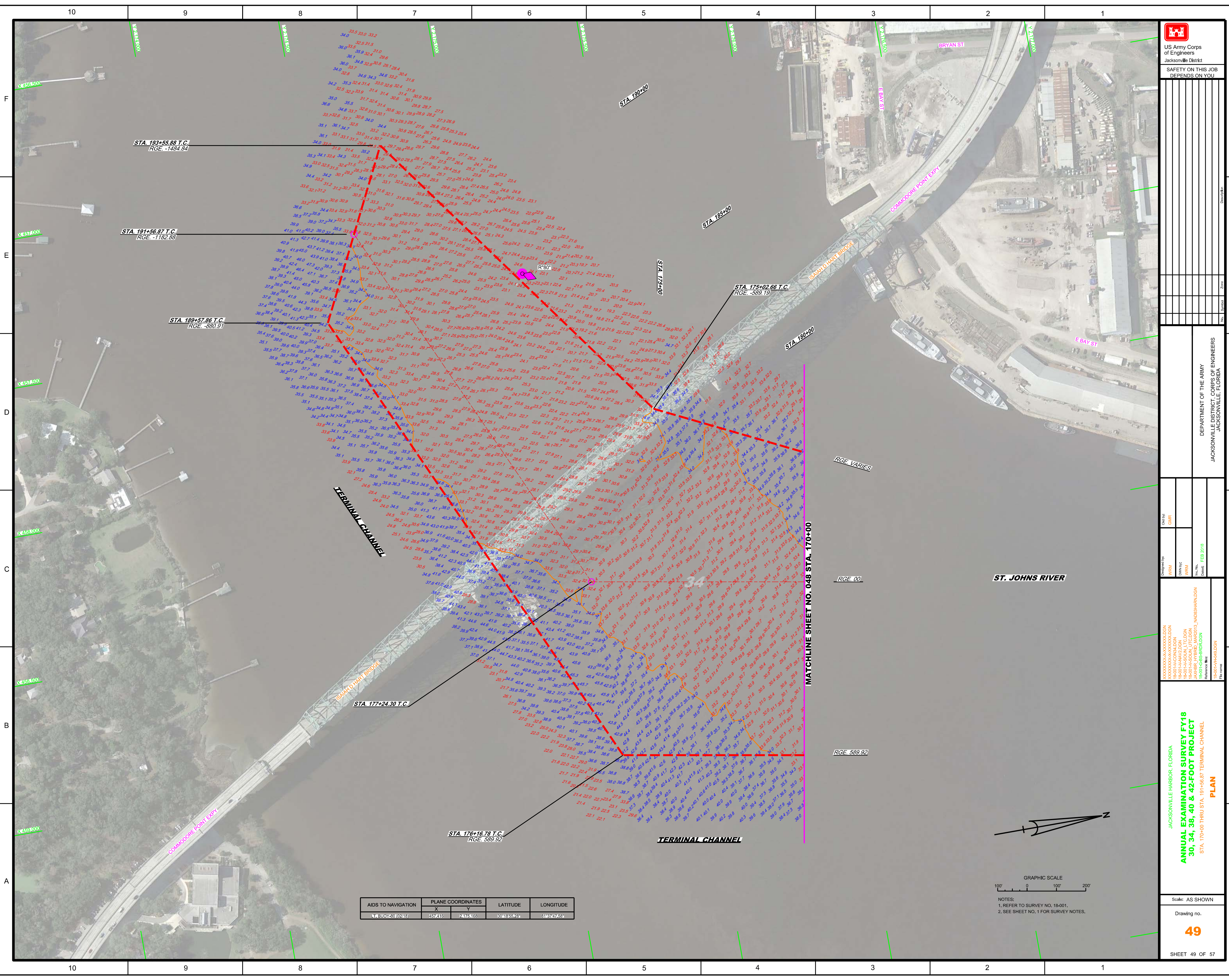
NOTES:
 1. REFER TO SURVEY NO. 18-001.
 2. SEE SHEET NO. 1 FOR SURVEY NOTES.

US Army Corps of Engineers
 Jacksonville District
SAFETY ON THIS JOB DEPENDS ON YOU

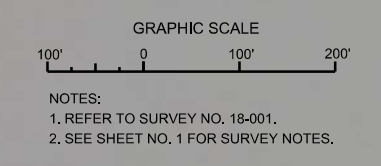
DEPARTMENT OF THE ARMY
 JACKSONVILLE DISTRICT, CORPS OF ENGINEERS
 JACKSONVILLE, FLORIDA

ANNUAL EXAMINATION SURVEY FY18
30, 34, 38, 40 & 42-FOOT PROJECT
 STA. 140+00 THRU STA. 170+00 TERMINAL CHANNEL
PLAN

Scale: AS SHOWN
 Drawing no. **48**
 SHEET 48 OF 57



AIDS TO NAVIGATION	PLANE COORDINATES		LATITUDE	LONGITUDE
	X	Y		
LT BUOY 30 (0210)	457410	2476100	30°18'52.6"	81°07'47.58"



NOTES:
 1. REFER TO SURVEY NO. 18-001.
 2. SEE SHEET NO. 1 FOR SURVEY NOTES.

US Army Corps of Engineers
 Jacksonville District

SAFETY ON THIS JOB DEPENDS ON YOU

DEPARTMENT OF THE ARMY
 JACKSONVILLE DISTRICT, CORPS OF ENGINEERS
 JACKSONVILLE, FLORIDA

ANNUAL EXAMINATION SURVEY FY18
30, 34, 38, 40 & 42-FOOT PROJECT
 STA. 170+00 THRU STA. 191+56.87 TERMINAL CHANNEL

PLAN

Scale: AS SHOWN

Drawing no. **49**

SHEET 49 OF 57

