
 US Army Corps
 of Engineers
 Jacksonville District
**SAFETY ON THIS JOB
 DEPENDS ON YOU**

DEPARTMENT OF THE ARMY
 JACKSONVILLE DISTRICT, CORPS OF ENGINEERS
 JACKSONVILLE, FLORIDA

Check By: GHK	Designated By: WYM	Drawn By: WYM	Date: FEB 2018
Checked By: GHK	Designated By: WYM	Drawn By: WYM	Date: FEB 2018
Checked By: GHK	Designated By: WYM	Drawn By: WYM	Date: FEB 2018

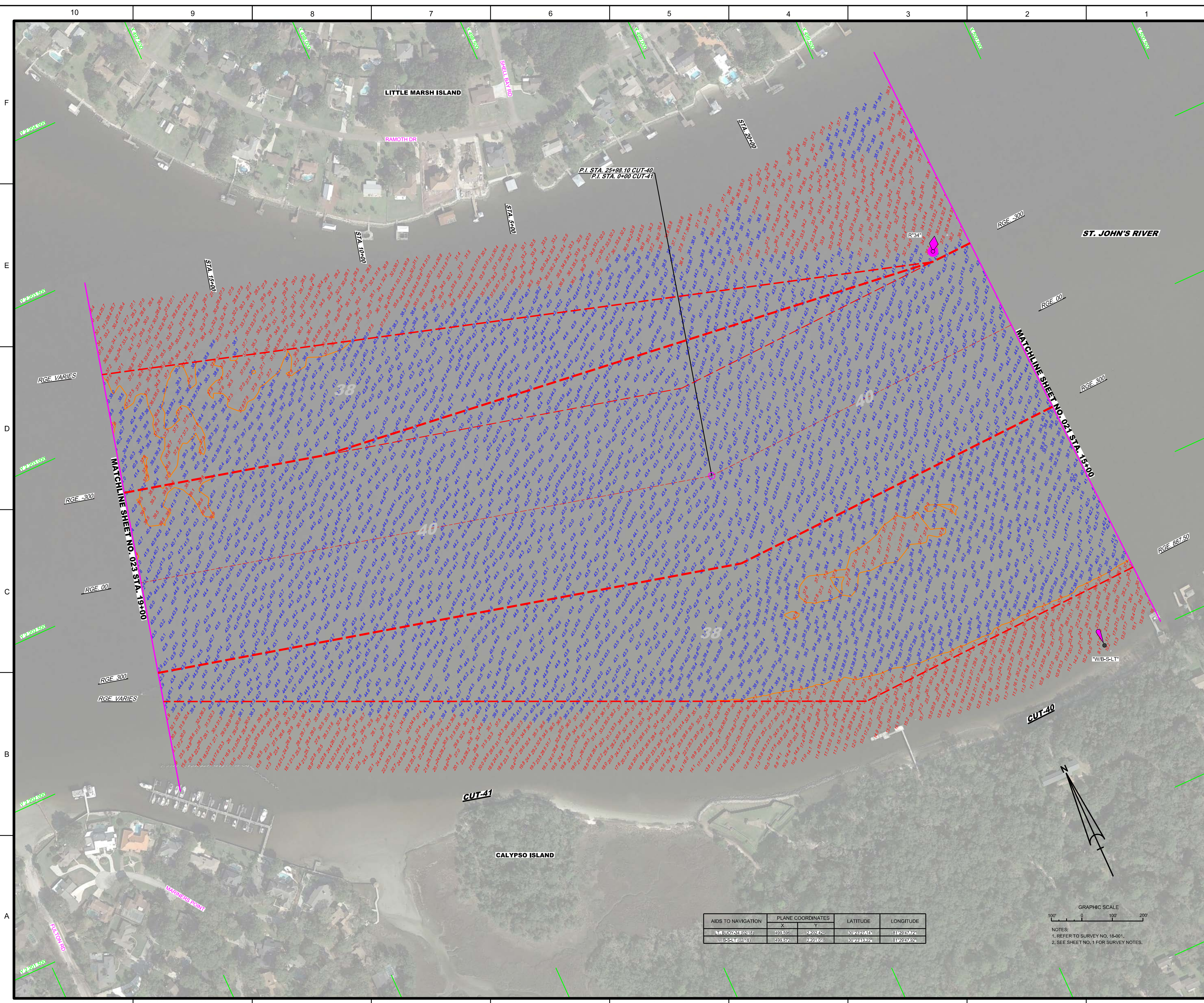
ANNUAL EXAMINATION SURVEY FY18
30, 34, 38, 40 & 42-FOOT PROJECT
 STA. 15+00 CUT-39 THRU STA. 15+00 CUT-40
PLAN

Scale: AS SHOWN
 Drawing no. **21**
 SHEET 21 OF 57

AIDS TO NAVIGATION	PLANE COORDINATES	LATITUDE	LONGITUDE
	X	Y	
LC-31 (02/18)	501.078	2201.598	30°23'19.02"
			81°29'30.75"



NOTES:
 1. REFER TO SURVEY NO. 18-001.
 2. SEE SHEET NO. 1 FOR SURVEY NOTES.



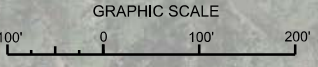
DEPARTMENT OF THE ARMY
JACKSONVILLE DISTRICT, CORPS OF ENGINEERS
JACKSONVILLE, FLORIDA

Check by: GHR
Designed by: WRM
Drawn by: WRM
Reviewed by: WRM
Date: FEB 2018

XXXXXXXXXXXXX.DGN
18001\HAW.DWG
18001\ACON.DGN
18001\ASOUL_C41.DGN
JACKHR (YPRB) MAR2013 (A003)ARNDGN
18001-GS-818.DGN
Reference: 18001-HAZZLDGN
File name: 18001-HAZZLDGN


JACKSONVILLE HARBOR, FLORIDA
**ANNUAL EXAMINATION SURVEY FY18
30, 34, 38, 40 & 42-FOOT PROJECT**
STA. 15+00 CUT-40 THRU STA. 19+00 CUT-41
PLAN

AIDS TO NAVIGATION	PLANE COORDINATES	LATITUDE	LONGITUDE	
	X	Y		
BUOY 53 (0218)	499.696	2202.462	33°23'24.1"	81°29'47.2"
WB-SLT (0218)	499.672	2203.008	33°23'24.332"	81°29'47.524"



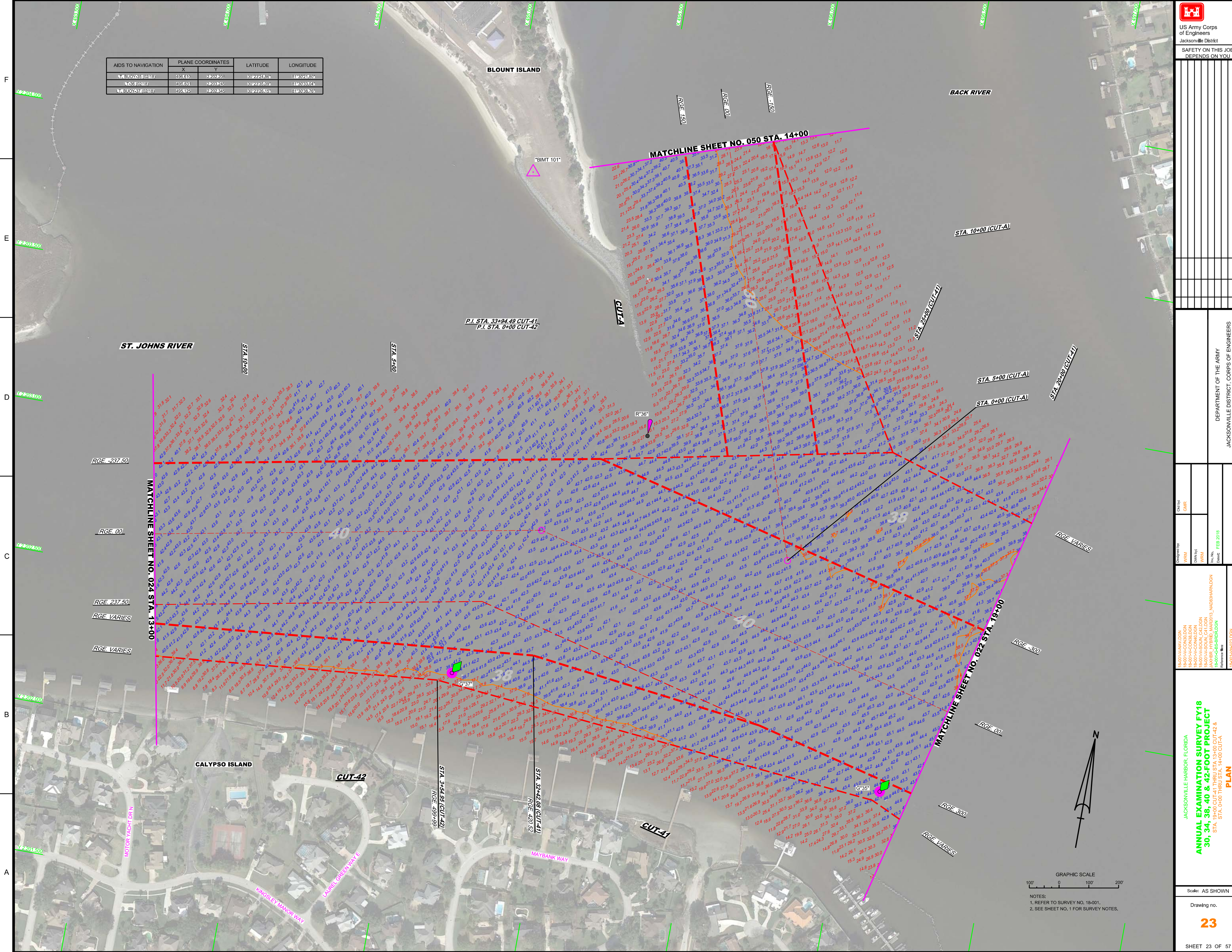
NOTES:
1. REFER TO SURVEY NO. 18-001.
2. SEE SHEET NO. 1 FOR SURVEY NOTES.

AIDS TO NAVIGATION	PLANE COORDINATES	LATITUDE	LONGITUDE	
X	Y			
BUOY-35 (0218)	490.610	2202203	80°23'28.36"	81°40'21.80"
COR (0218)	499.631	2203225	80°23'33.09"	81°40'23.04"
BUOY-37 (0218)	494.225	2202225	80°23'29.65"	81°40'23.76"



US Army Corps of Engineers
Jacksonville District

**SAFETY ON THIS JOB
DEPENDS ON YOU**



DEPARTMENT OF THE ARMY
JACKSONVILLE DISTRICT, CORPS OF ENGINEERS
JACKSONVILLE, FLORIDA

Checked by:	GHM
Designed by:	WYM
Drawn by:	WYM
Scale:	AS SHOWN
Date:	FEB 2018

ANNUAL EXAMINATION SURVEY FY18
30, 34, 38, 40 & 42-FOOT PROJECT

STA. 19+00 CUT-41 THRU STA 13+00 CUT-42 & STA. 0+00 THRU STA. 14+00 CUT-4A

PLAN

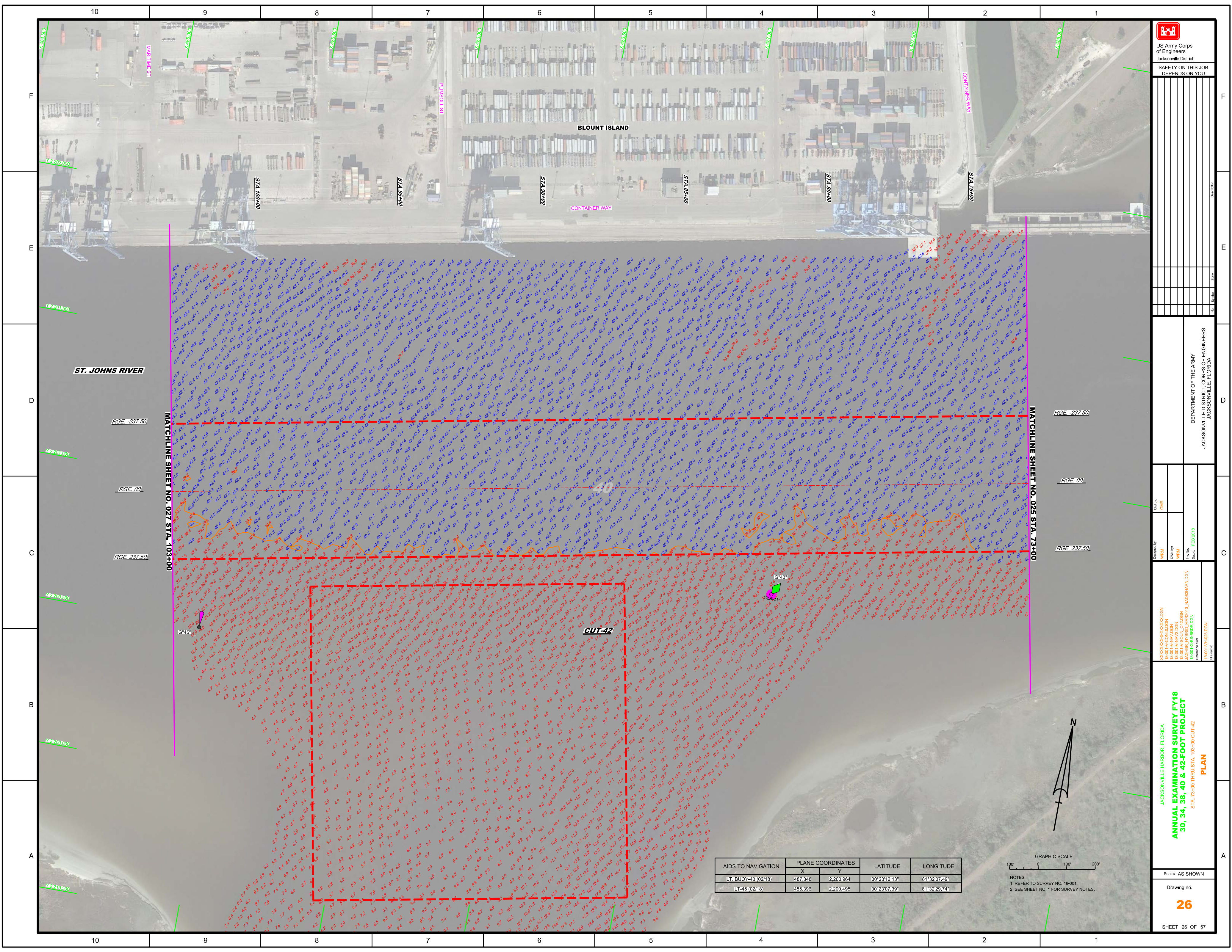
Scale: AS SHOWN


Drawing no.
23

SHEET 23 OF 57

GRAPHIC SCALE
100' 0 100' 200'

NOTES:
1. REFER TO SURVEY NO. 18-001.
2. SEE SHEET NO. 1 FOR SURVEY NOTES.





 US Army Corps of Engineers
 Jacksonville District
 SAFETY ON THIS JOB
 DEPENDS ON YOU

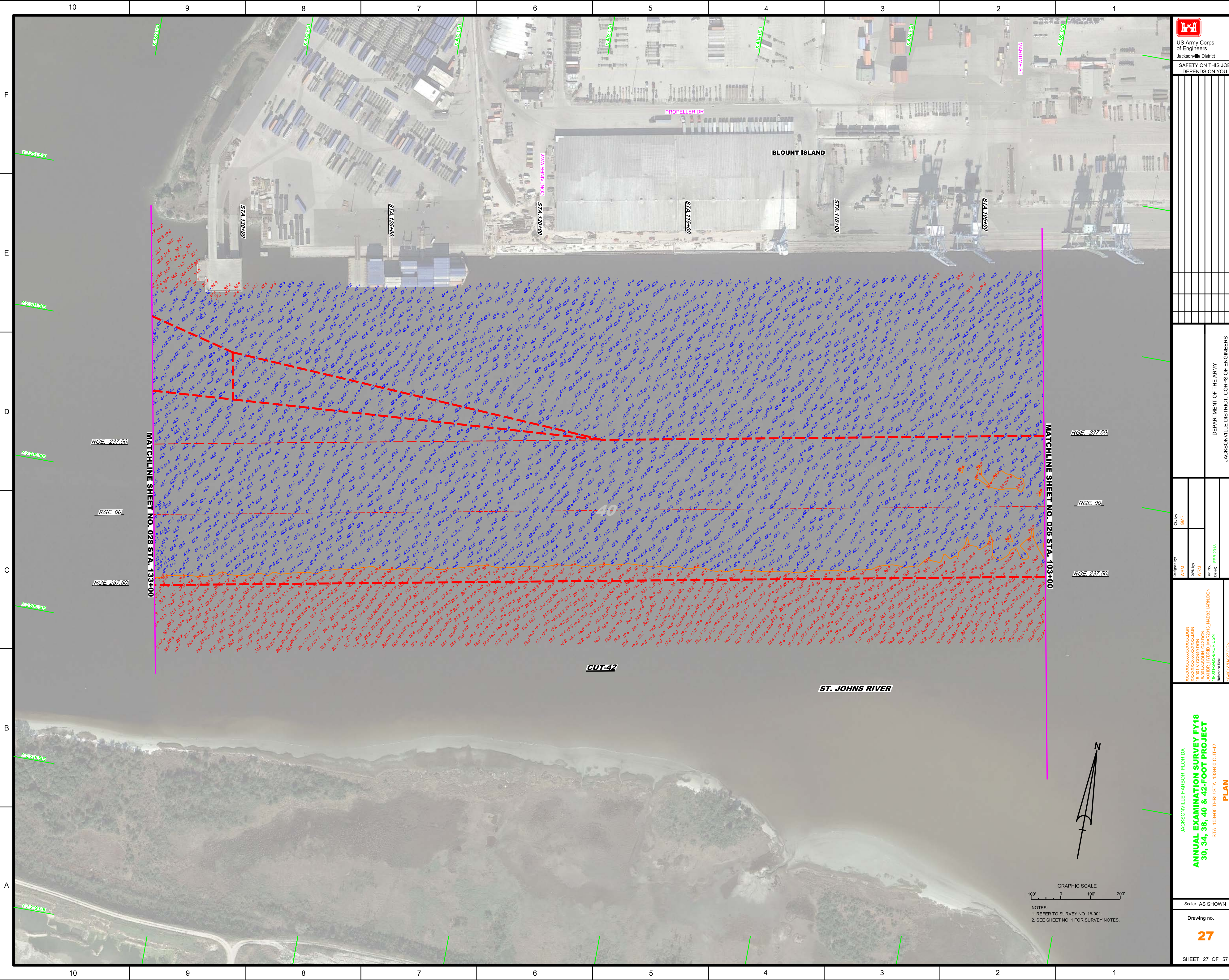
Department of the Army
 Jacksonville District, Corps of Engineers
 Jacksonville, Florida


JACKSONVILLE HARBOR, FLORIDA
ANNUAL EXAMINATION SURVEY FY18
30, 34, 38, 40 & 42-FOOT PROJECT
 STA. 73+00 THRU STA. 103+00 CUT-42
PLAN

Scale: AS SHOWN
 Drawing no. **26**
 SHEET 26 OF 57

AIDS TO NAVIGATION	PLANE COORDINATES		LATITUDE	LONGITUDE
	X	Y		
LT BUOY-43 (02/18)	487,348	2,200,964	30°23'12.13"	81°32'07.49"
LT-45 (02/18)	485,396	2,200,495	30°23'07.39"	81°32'29.74"

GRAPHIC SCALE
 100' 0 100' 200'
 NOTES:
 1. REFER TO SURVEY NO. 18-001.
 2. SEE SHEET NO. 1 FOR SURVEY NOTES.




 US Army Corps of Engineers
 Jacksonville District
 SAFETY ON THIS JOB
 DEPENDS ON YOU

DEPARTMENT OF THE ARMY
 JACKSONVILLE DISTRICT, CORPS OF ENGINEERS
 JACKSONVILLE, FLORIDA

Designed by: **WRM**
 Drawn by: **WRM**
 Checked by: **WRM**
 Date: **FEB 2018**

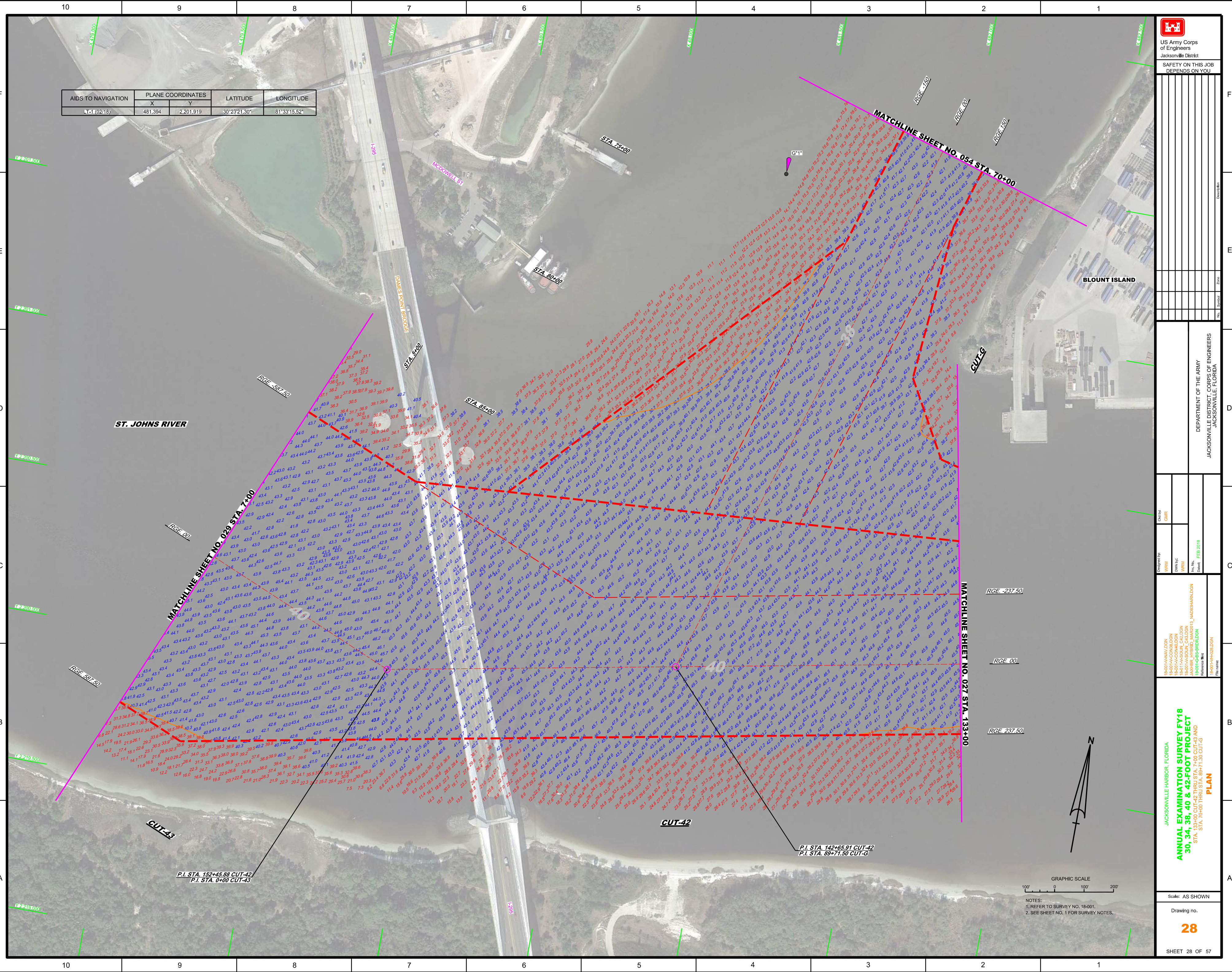
JACKSONVILLE HARBOR, FLORIDA
ANNUAL EXAMINATION SURVEY FY18
30, 34, 38, 40 & 42-FOOT PROJECT
 STA. 103+00 THRU STA. 133+00 CUT-42
PLAN

Scale: AS SHOWN
 Drawing no. **27**
 SHEET 27 OF 57

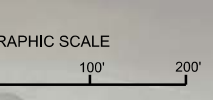
MATCHLINE SHEET NO. 028 STA. 133+00
 RGE -237.50
 RGE 00
 RGE 237.50
 MATCHLINE SHEET NO. 026 STA. 103+00

GRAPHIC SCALE
 100' 0 100' 200'
 NOTES:
 1. REFER TO SURVEY NO. 18-001.
 2. SEE SHEET NO. 1 FOR SURVEY NOTES.

AIDS TO NAVIGATION	PLANE COORDINATES		LATITUDE	LONGITUDE
	X	Y		
LT-1 (0218)	481.394	2,201.919	30°23'21.30"	81°33'15.52"



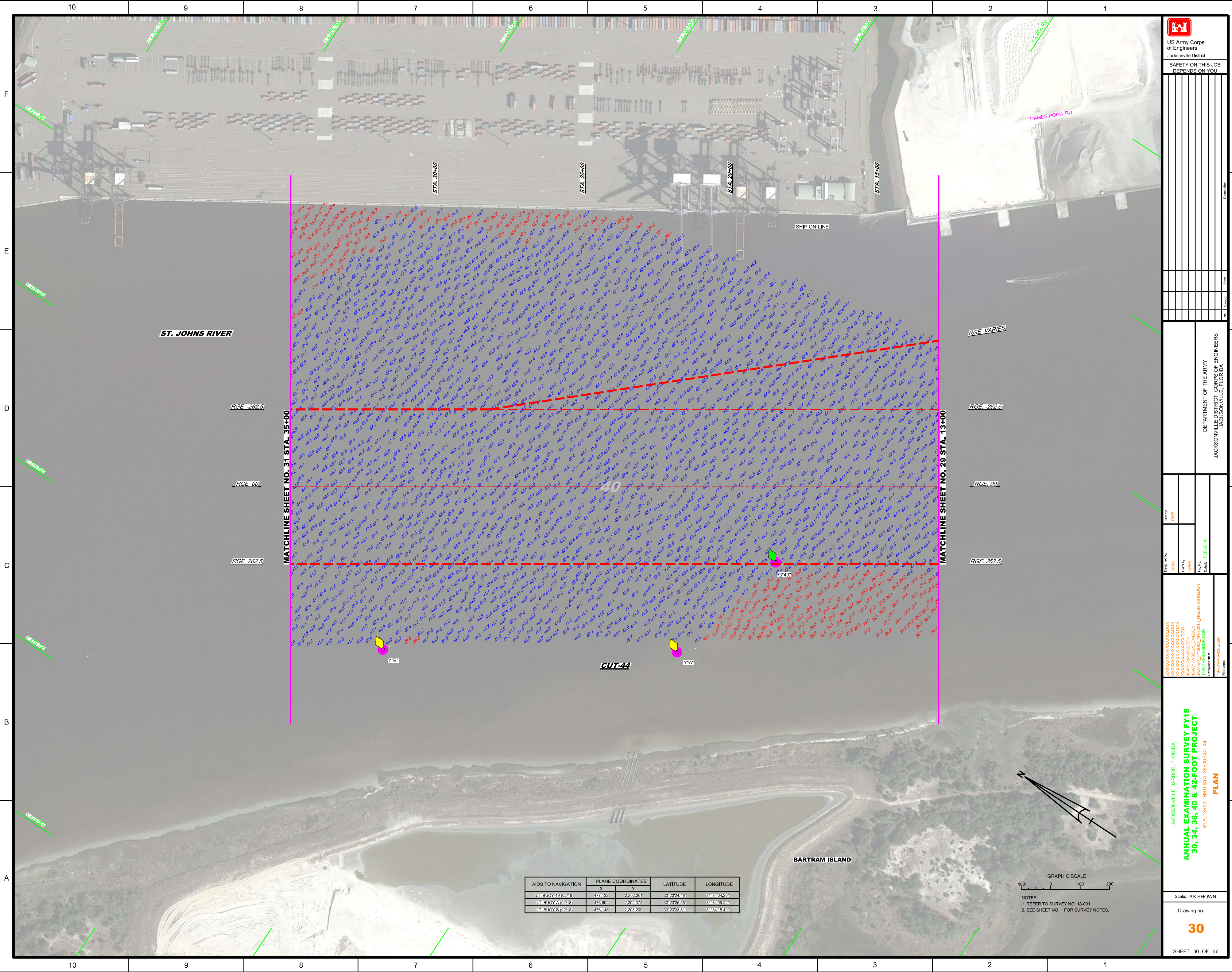
AIDS TO NAVIGATION	PLANE COORDINATES		LATITUDE	LONGITUDE
	X	Y		
LT-1 (0218)	481.394	2,201.919	30°23'21.30"	81°33'15.52"



NOTES:
1. REFER TO SURVEY NO. 18-001.
2. SEE SHEET NO. 1 FOR SURVEY NOTES.

JACKSONVILLE HARBOR, FLORIDA
ANNUAL EXAMINATION SURVEY FY18
30, 34, 38, 40 & 42-FOOT PROJECT
STA. 133+00 CUT-42 THRU STA. 7+00 CUT-43 AND
STA. 70+00 THRU STA. 68+71.30 CUT-G
PLAN

Scale: AS SHOWN
Drawing no. 28
SHEET 28 OF 57



US Army Corps of Engineers
 Jacksonville District
SAFETY ON THIS JOB DEPENDS ON YOU

Department of the Army
 Jacksonville District, Corps of Engineers
 Jacksonville, Florida

Job No: 18001HYB03LDN
 Project: ANNUAL EXAMINATION SURVEY FY18
 Stationing: STA. 13+00 THRU STA. 35+00 CUT-44
 Date: FEB 2018
 Scale: AS SHOWN

AIDS TO NAVIGATION	PLANE COORDINATES		LATITUDE	LONGITUDE
	X	Y		
LT. BUOY-49 (02/18)	477.132	2,202.261	30°23'24.48"	81°34'04.20"
LT. BUOY-A (02/18)	476.692	2,202.372	30°23'25.55"	81°34'09.22"
LT. BUOY-B (02/18)	476.148	2,203.209	30°23'33.81"	81°34'15.49"

GRAPHIC SCALE
 0 100' 200'
 NOTES:
 1. REFER TO SURVEY NO. 18-001.
 2. SEE SHEET NO. 1 FOR SURVEY NOTES.

JACKSONVILLE HARBOR, FLORIDA
ANNUAL EXAMINATION SURVEY FY18
30, 34, 38, 40 & 42-FOOT PROJECT
 STA. 13+00 THRU STA. 35+00 CUT-44
PLAN
 Scale: AS SHOWN
 Drawing no. **30**
 SHEET 30 OF 57