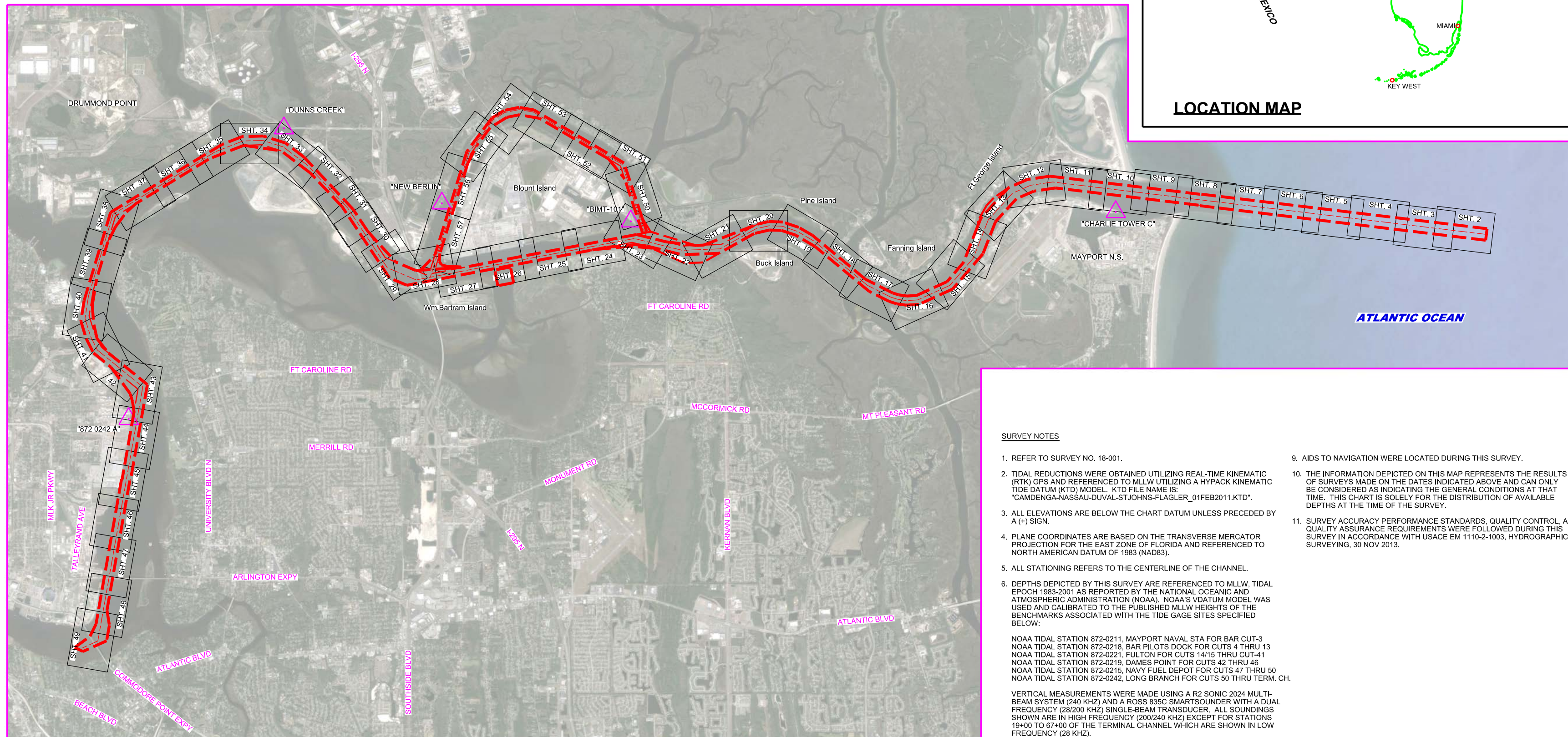


# JACKSONVILLE HARBOR, FLORIDA

## ANNUAL EXAM SURVEY FY18

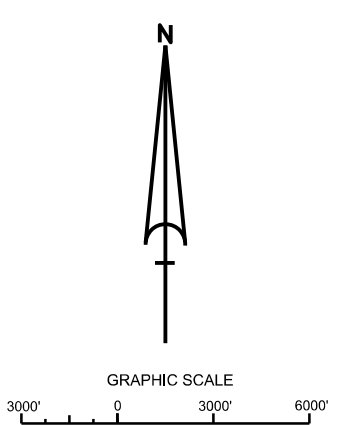


- SURVEY NOTES**
- REFER TO SURVEY NO. 18-001.
  - TIDAL REDUCTIONS WERE OBTAINED UTILIZING REAL-TIME KINEMATIC (RTK) GPS AND REFERENCED TO MLLW UTILIZING A HYPACK KINEMATIC TIDE DATUM (KT) MODEL. KTD FILE NAME IS: "CAMDENGA-NASSAU-DUVAL-STJOHNS-FLAGLER\_01FEB2011.KTD".
  - ALL ELEVATIONS ARE BELOW THE CHART DATUM UNLESS PRECEDED BY A (+) SIGN.
  - PLANE COORDINATES ARE BASED ON THE TRANSVERSE MERCATOR PROJECTION FOR THE EAST ZONE OF FLORIDA AND REFERENCED TO NORTH AMERICAN DATUM OF 1983 (NAD83).
  - ALL STATIONING REFERS TO THE CENTERLINE OF THE CHANNEL.
  - DEPTHS DEPICTED BY THIS SURVEY ARE REFERENCED TO MLLW, TIDAL EPOCH 1983-2001 AS REPORTED BY THE NATIONAL OCEANIC AND ATMOSPHERIC ADMINISTRATION (NOAA). NOAA'S DATUM MODEL WAS USED AND CALIBRATED TO THE PUBLISHED MLLW HEIGHTS OF THE BENCHMARKS ASSOCIATED WITH THE TIDE GAGE SITES SPECIFIED BELOW:  
 NOAA TIDAL STATION 872-0211, MAYPORT NAVAL STA FOR BAR CUT-3  
 NOAA TIDAL STATION 872-0218, BAR PILOTS DOCK FOR CUTS 4 THRU 13  
 NOAA TIDAL STATION 872-0221, FULTON FOR CUTS 14/15 THRU CUT-41  
 NOAA TIDAL STATION 872-0219, DAMES POINT FOR CUTS 42 THRU 46  
 NOAA TIDAL STATION 872-0215, NAVY FUEL DEPOT FOR CUTS 47 THRU 50  
 NOAA TIDAL STATION 872-0242, LONG BRANCH FOR CUTS 50 THRU TERM. CH.
  - VERTICAL MEASUREMENTS WERE MADE USING A R2 SONIC 2024 MULTI-BEAM SYSTEM (240 KHZ) AND A ROSS 830C SMARTSOUNDER WITH A DUAL FREQUENCY (28/200 KHZ) SINGLE-BEAM TRANSDUCER. ALL SOUNDINGS SHOWN ARE IN HIGH FREQUENCY (200/240 KHZ) EXCEPT FOR STATIONS 19+00 TO 67+00 OF THE TERMINAL CHANNEL WHICH ARE SHOWN IN LOW FREQUENCY (28 KHZ).
  - THIS SURVEY WAS PERFORMED USING REAL-TIME KINEMATIC (RTK) GPS POSITIONING WITH THE FOLLOWING REFERENCE BASE LOCATIONS:  
 REFERENCE BASE LOCATED AT "CHARLIE TOWER ARP" (PID: BBDC09) FOR BAR CUT-3 THRU CUT-8  
 REFERENCE BASE LOCATED AT "BIMT-101" (PID: BBBX61) FOR CUT-9 THRU CUT-42, CUT A & B  
 REFERENCE BASE LOCATED AT "DUNNS CREEK" (PID: BBCT64) FOR CUT-43 THRU CUT-50  
 REFERENCE BASE LOCATED AT "NEW BERLIN" (OPUS PID: BBDH77) FOR CUT-F, CUT-G AND CUT-42  
 REFERENCE BASE LOCATED AT "872 0242A" (OPUS PID: BBBZ31) FOR CUT-51 THRU THE TERMINAL CHANNEL
  - AIDS TO NAVIGATION WERE LOCATED DURING THIS SURVEY.
  - THE INFORMATION DEPICTED ON THIS MAP REPRESENTS THE RESULTS OF SURVEYS MADE ON THE DATES INDICATED ABOVE AND CAN ONLY BE CONSIDERED AS INDICATING THE GENERAL CONDITIONS AT THAT TIME. THIS CHART IS SOLELY FOR THE DISTRIBUTION OF AVAILABLE DEPTHS AT THE TIME OF THE SURVEY.
  - SURVEY ACCURACY PERFORMANCE STANDARDS, QUALITY CONTROL, AND QUALITY ASSURANCE REQUIREMENTS WERE FOLLOWED DURING THIS SURVEY IN ACCORDANCE WITH USACE EM 1110-2-1003, HYDROGRAPHIC SURVEYING, 30 NOV 2013.

VESSEL	DATE OF SURVEY	CUT
SV FLORIDA II	20 NOV 2017, 4-6 DEC 2017	BAR CUT-3
SB-46	21 DEC 2017	CUTS 4 THRU 8
SB-46	22 DEC 2017	CUTS 9 THRU 13
SB-46	11 JAN 2018	CUT 14/15
SB-46	22 NOV 2017	CUTS 16 THRU 39
SB-46	20 NOV 2017	CUTS 40 THRU 41
SB-46	05 JAN 2018	CUT 42
SB-46	05 JAN 2018	CUT 42 EXTENSION
SB-46	30 JAN 2018	CUTS 43 THRU 44
SB-46	23 JAN 2018	CUTS 45 THRU 48
SB-46	12 JAN 2018	CUTS 49 THRU 50
SB-46	02 FEB 2018	CUT-51
SB-46	31 JAN 2018	CUTS 52 THRU 55
SB-46	25 NOV 2017	TERMINAL CHANNEL
SB-46	31 JAN 2018, 13 FEB 2018	TERMINAL CHANNEL
SB-46	27 NOV 2017	CUT-A
SB-46	27-28 NOV 2017	CUT-B
SB-46	05 JAN 2018	CUTS F & G

LEGEND	
	MONUMENT
	LIGHTED BUOY
	GREEN DAYBEACON
	RED DAYBEACON
	RED LIGHTED BUOY
	GREEN LIGHTED BUOY
	CAN BUOY
	NUN BUOY
	TIDE STAFF
	PROJECT DEPTH

AUTHORIZED PROJECT DEPTH	
42 FT	CUT - 3 (BAR CUT), STA. 0+00 THRU STA. 210+00
40 FT	CUT - 3 (BAR CUT) STA. 210+00 THRU TERMINAL CHANNEL STA. 65+00.
34 FT	TERMINAL CHANNEL, STA. 65+00 THRU STA. 186+21 (APPROX. 1200 FEET UPSTREAM FROM THE HART BRIDGE NEAR COMMODORE POINT).
30 FT	CUT-A, STA. 0+00 THRU 53+10.21
38 FT	OLD RIVER BLOUNT ISLAND (WESTSIDE) CHANNEL CUT-F, STA. 10+00 - NEAR WOODEN FISHING BRIDGE PIER THRU INTERSECTION OF CUT - 42 (DAMES PT. - FULTON CUT - OFF



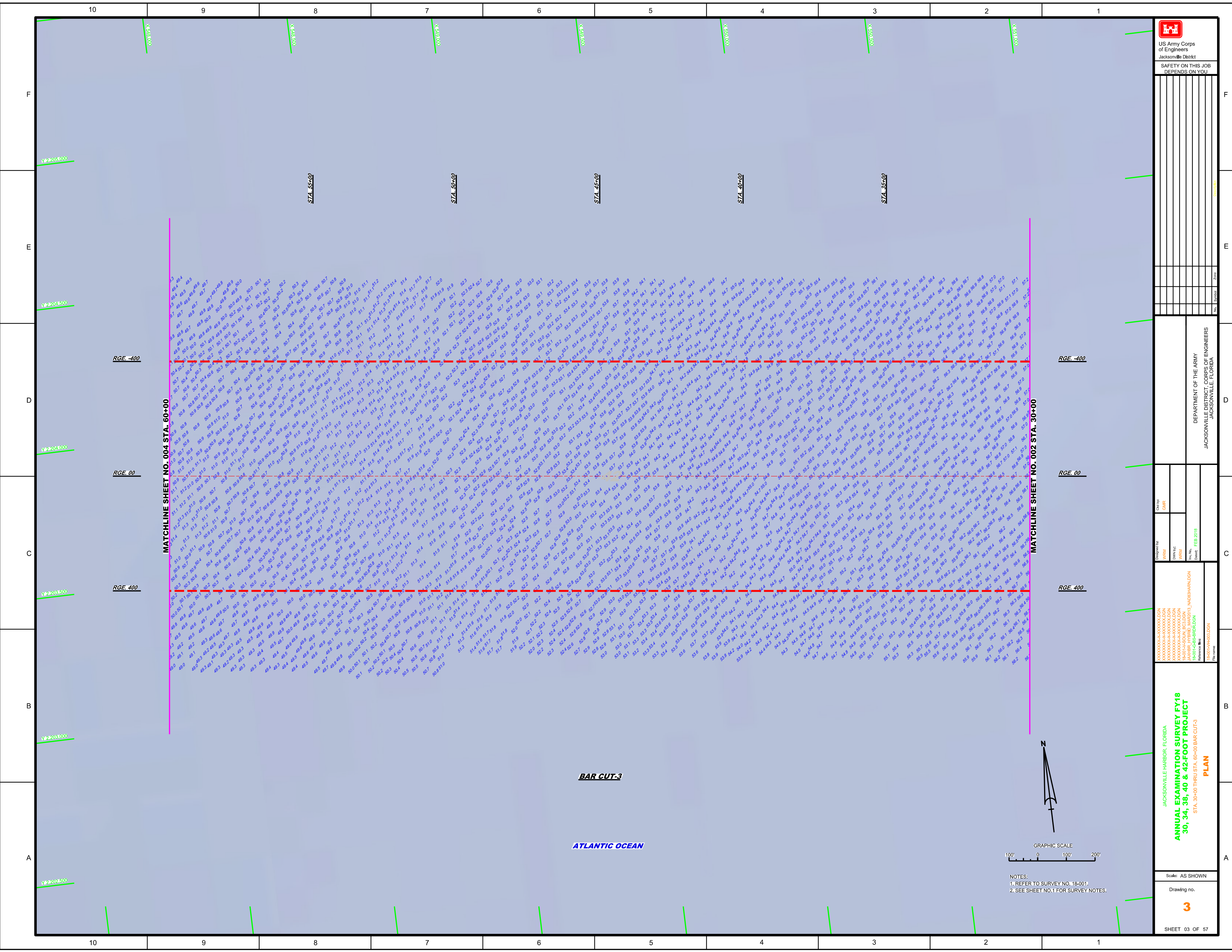
US Army Corps of Engineers  
Jacksonville District  
SAFETY ON THIS JOB  
DEPENDS ON YOU

DEPARTMENT OF THE ARMY  
JACKSONVILLE DISTRICT, CORPS OF ENGINEERS  
JACKSONVILLE, FLORIDA

ANNUAL EXAMINATION SURVEY FY18  
30, 34, 38, 40 & 42-FOOT PROJECT  
INDEX, LOCATION AND VICINITY MAP

Scale: AS SHOWN  
Drawing no. 1  
SHEET 01 OF 57





US Army Corps of Engineers  
Jacksonville District

SAFETY ON THIS JOB  
DEPENDS ON YOU

NO.	NAME	DATE	REVISIONS

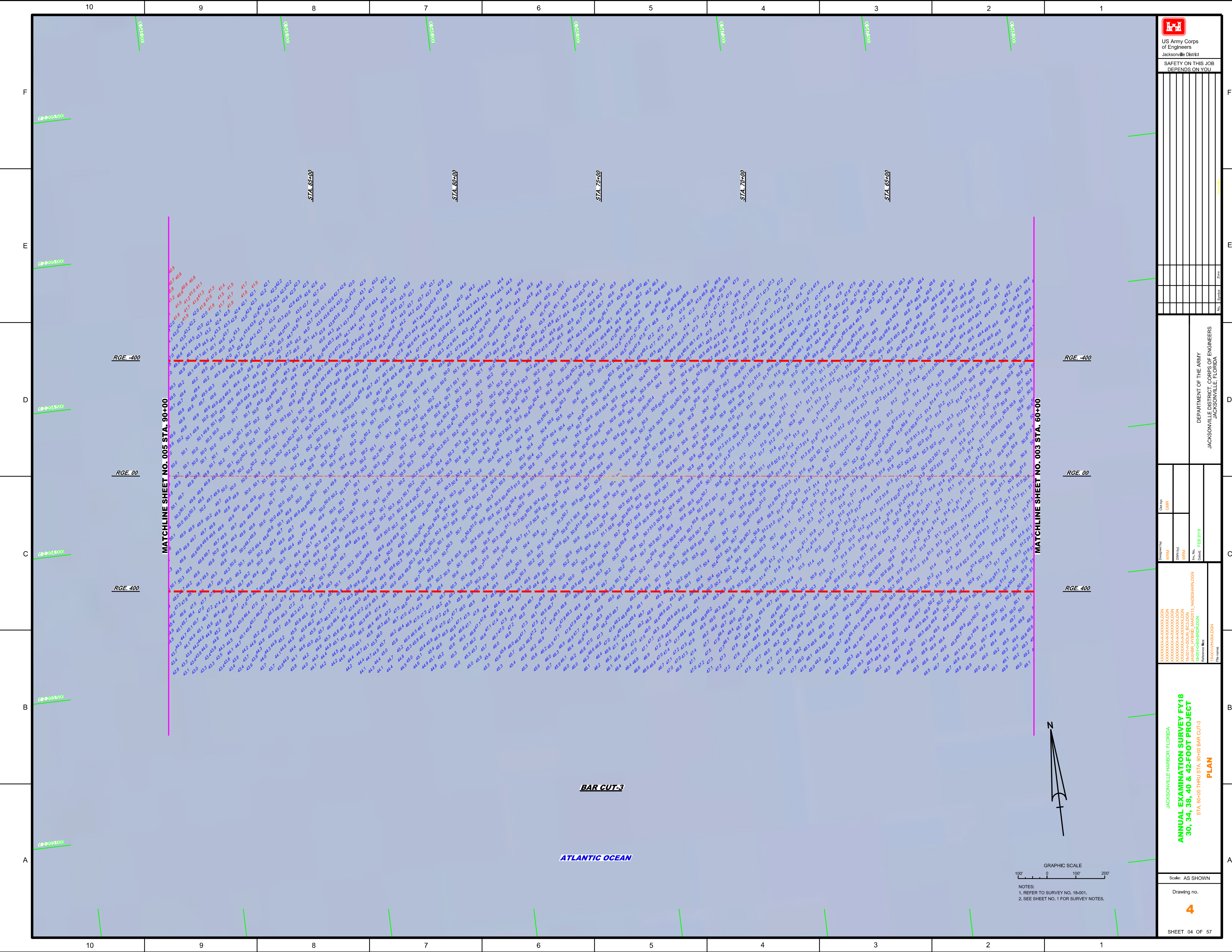
DEPARTMENT OF THE ARMY  
JACKSONVILLE DISTRICT, CORPS OF ENGINEERS  
JACKSONVILLE, FLORIDA


Checked By:	CHR
Designed By:	WRM
Drawn By:	WRM
Reviewed By:	WRM
Issue Date:	FEB 2018
Revision:	

JACKSONVILLE HARBOR, FLORIDA  
ANNUAL EXAMINATION SURVEY FY18  
30, 34, 38, 40 & 42-FOOT PROJECT  
STA. 30+00 THRU STA. 60+00 BAR CUT-3  
PLAN

Scale: AS SHOWN  
Drawing no. 3  
SHEET 03 OF 57

NOTES:  
1. REFER TO SURVEY NO. 18-001.  
2. SEE SHEET NO. 1 FOR SURVEY NOTES.




  
 US Army Corps of Engineers  
 Jacksonville District  
 SAFETY ON THIS JOB  
 DEPENDS ON YOU

DEPARTMENT OF THE ARMY  
 JACKSONVILLE DISTRICT, CORPS OF ENGINEERS  
 JACKSONVILLE, FLORIDA

Designed by: **WRM**  
 Checked by: **GHR**  
 Drawn by: **WRM**  
 Title: **PLAN**  
 Date: **FEB 2018**  
 Reference: **18-001-HR0400DN**  
 File name: **18-001-HR0400DN**

JACKSONVILLE HARBOR, FLORIDA  
**ANNUAL EXAMINATION SURVEY FY18**  
**30, 34, 38, 40 & 42-FOOT PROJECT**  
 STA. 60+00 THRU STA. 99+00 BAR CUT-3  
**PLAN**

Scale: AS SHOWN  
 Drawing no. **4**  
 SHEET 04 OF 57

**BAR CUT-3**  
**ATLANTIC OCEAN**

GRAPHIC SCALE  
 Scale: 1" = 100'  
 0 100 200

NOTES:  
 1. REFER TO SURVEY NO. 18-001.  
 2. SEE SHEET NO. 1 FOR SURVEY NOTES.



SAFETY ON THIS JOB  
DEPENDS ON YOU

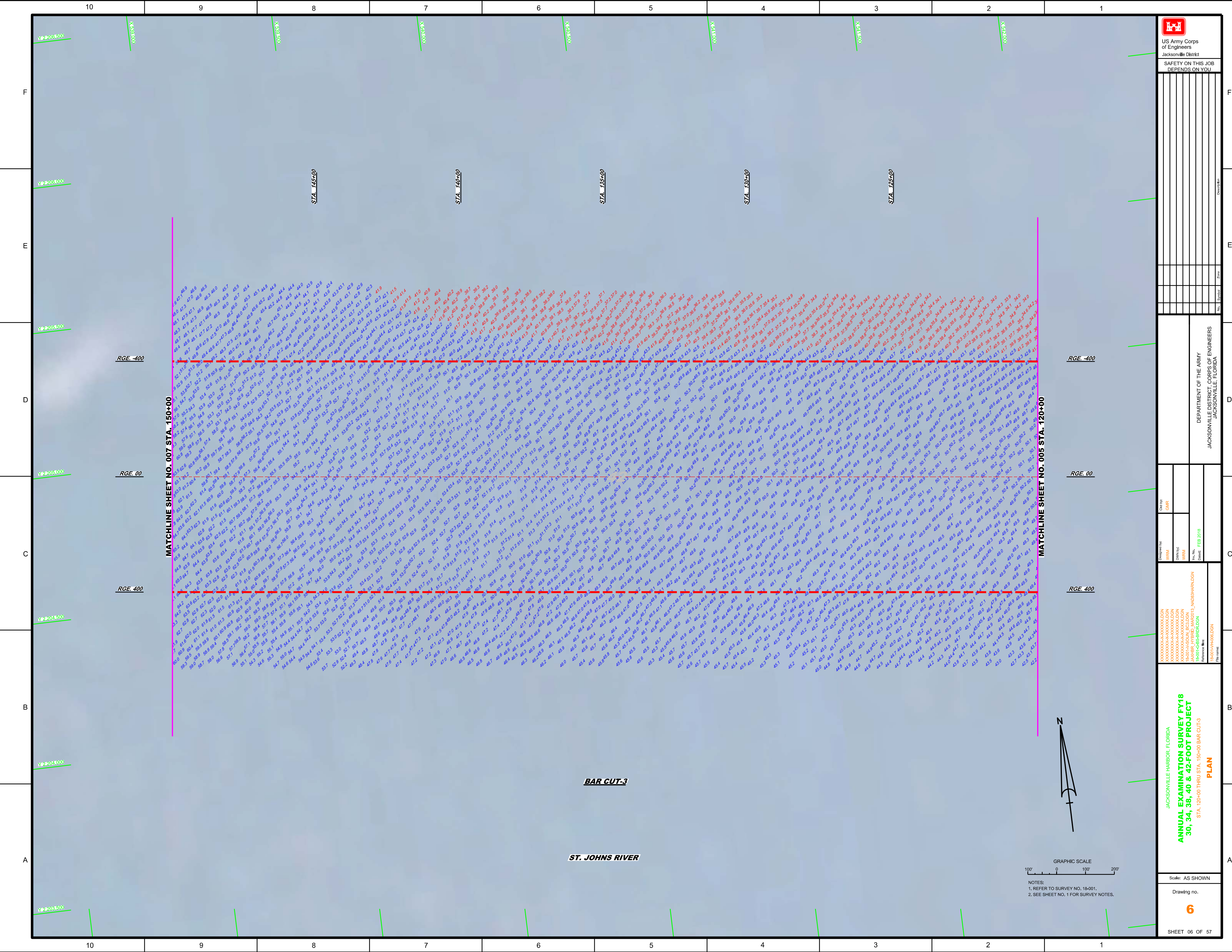
Drawn	Checked	Reviewed	Date

DEPARTMENT OF THE ARMY  
JACKSONVILLE DISTRICT CORPS OF ENGINEERS  
JACKSONVILLE, FLORIDA

Designed By: GHR  
Drawn By: GHR  
Checked By: GHR  
Date: FEB 2018

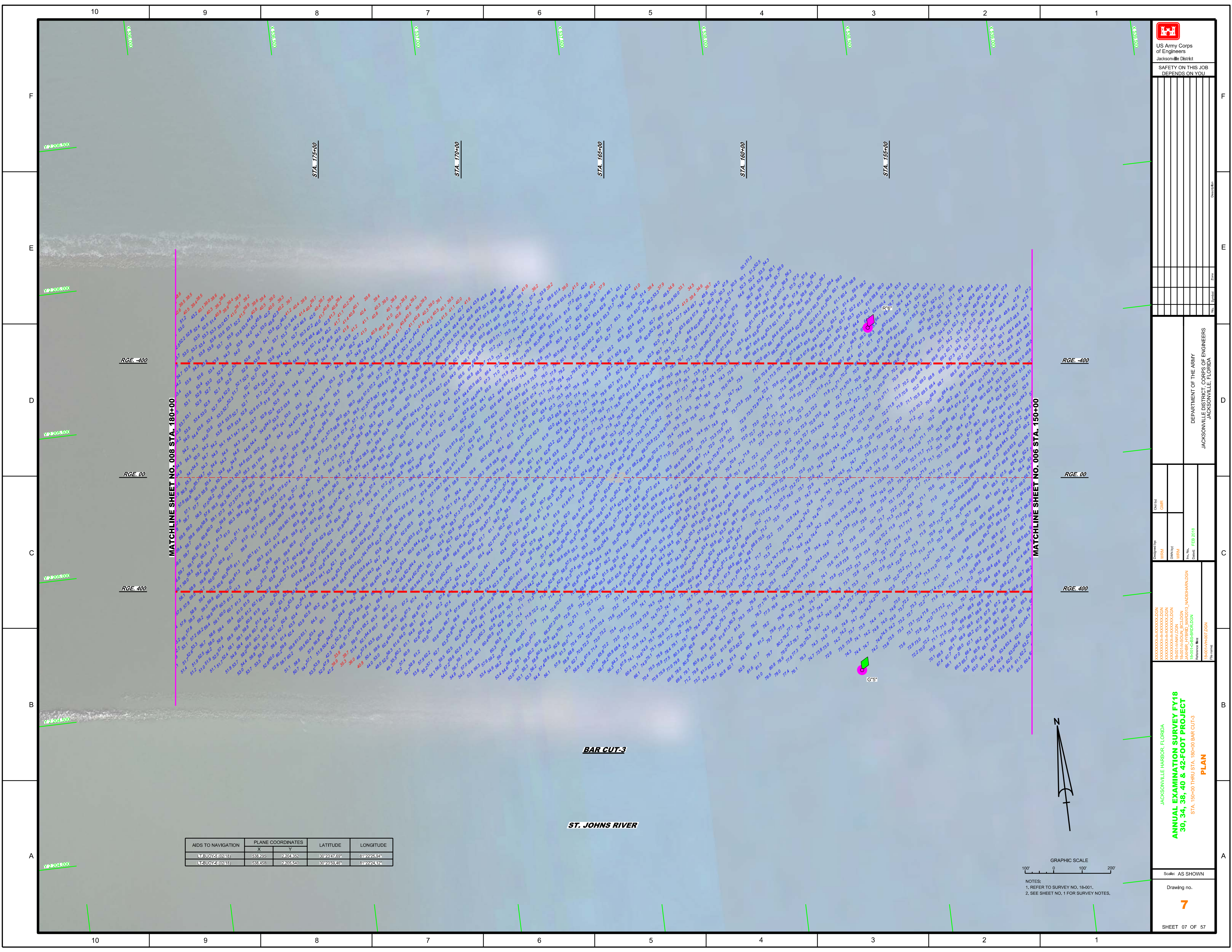
JACKSONVILLE HARBOR, FLORIDA  
**ANNUAL EXAMINATION SURVEY FY18**  
**30, 34, 38, 40 & 42-FOOT PROJECT**  
STA. 120+00 THRU STA. 150+00 BAR CUT-3  
**PLAN**

Scale: AS SHOWN  
Drawing no. **6**  
SHEET 06 OF 57



GRAPHIC SCALE  
Scale: AS SHOWN

NOTES:  
1. REFER TO SURVEY NO. 18-001.  
2. SEE SHEET NO. 1 FOR SURVEY NOTES.



AIDS TO NAVIGATION	PLANE COORDINATES		LATITUDE	LONGITUDE
	X	Y		
LT-BUOY-5 (0218)	538,295	2,204,352	30°23'47.69"	81°22'25.94"
LT-BUOY-6 (0218)	538,453	2,205,540	30°23'59.46"	81°22'24.12"

**ST. JOHNS RIVER**

**BAR CUT-3**



NOTES:  
1. REFER TO SURVEY NO. 18-001.  
2. SEE SHEET NO. 1 FOR SURVEY NOTES.

US Army Corps  
of Engineers  
Jacksonville District

**SAFETY ON THIS JOB  
DEPENDS ON YOU**

---

Designed by: **WRM**

Checked by: **GHR**

Drawn by: **WRM**

Reviewed by: **WRM**

Reference: **18-001-HAV/DGN**  
**18-001-GS-BR/DGN**  
**18-001-GS-BR/DGN**

DEPARTMENT OF THE ARMY  
JACKSONVILLE DISTRICT, CORPS OF ENGINEERS  
JACKSONVILLE, FLORIDA

Scale: AS SHOWN

Drawing no. **7**

SHEET 07 OF 57

10 9 8 7 6 5 4 3 2 1



US Army Corps of Engineers  
Jacksonville District  
SAFETY ON THIS JOB  
DEPENDS ON YOU

DATE: \_\_\_\_\_  
DRAWN BY: \_\_\_\_\_  
CHECKED BY: \_\_\_\_\_

PROJECT: \_\_\_\_\_  
SHEET NO.: 8 OF 57

DEPARTMENT OF THE ARMY  
JACKSONVILLE DISTRICT, CORPS OF ENGINEERS  
JACKSONVILLE, FLORIDA

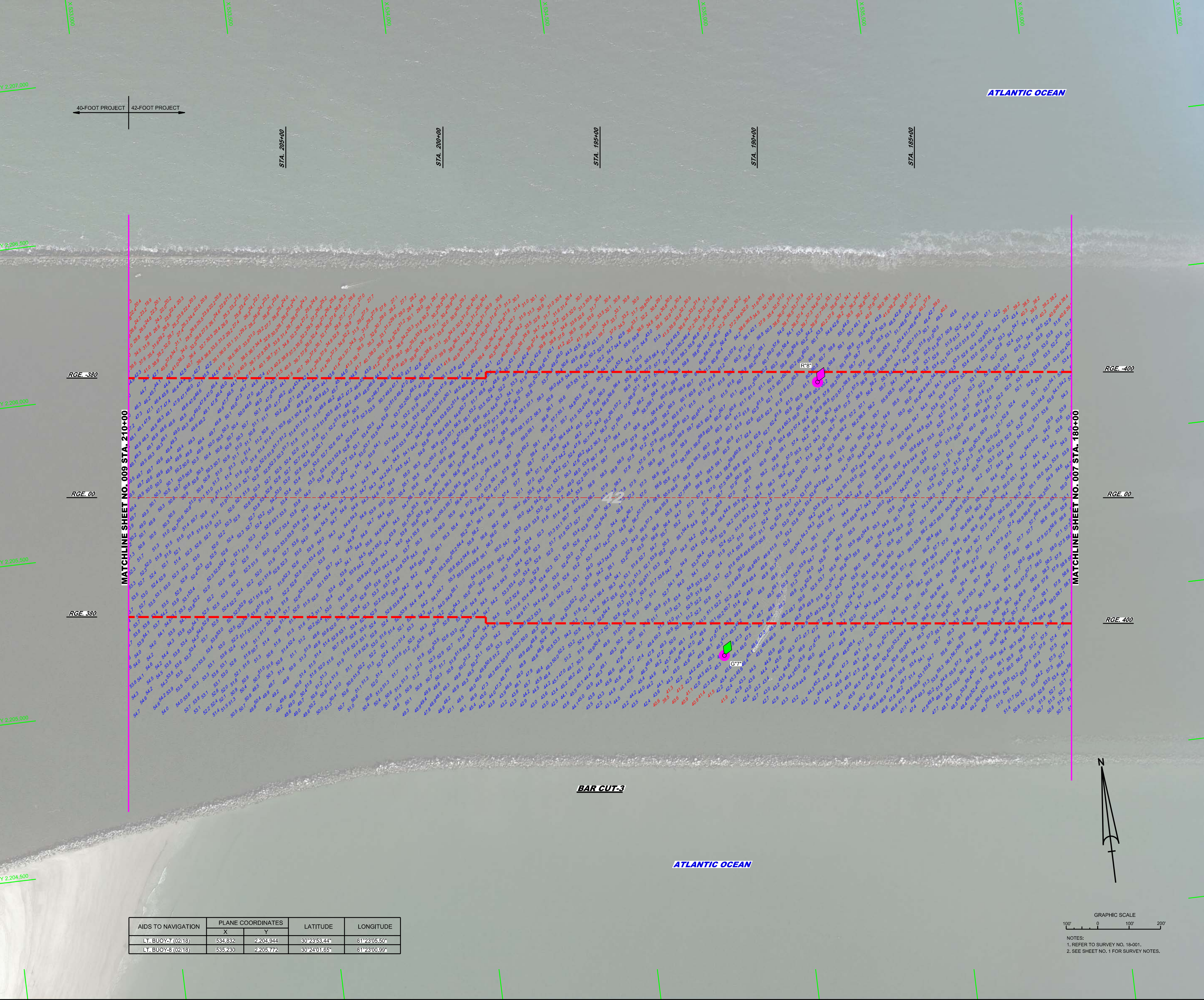
DATE: \_\_\_\_\_  
DRAWN BY: \_\_\_\_\_  
CHECKED BY: \_\_\_\_\_

PROJECT: \_\_\_\_\_  
SHEET NO.: 8 OF 57

JACKSONVILLE HARBOR, FLORIDA  
ANNUAL EXAMINATION SURVEY FY18  
30, 34, 38, 40 & 42-FOOT PROJECT  
STA. 180+00 THRU STA. 210+00 BAR CUT-3  
PLAN  
Scale: AS SHOWN  
Drawing no. **8**  
SHEET 08 OF 57

ATLANTIC OCEAN

ATLANTIC OCEAN



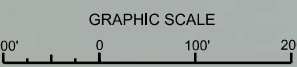
MATCHLINE SHEET NO. 009 STA. 210+00

MATCHLINE SHEET NO. 007 STA. 180+00

40-FOOT PROJECT 42-FOOT PROJECT

BAR CUT-3

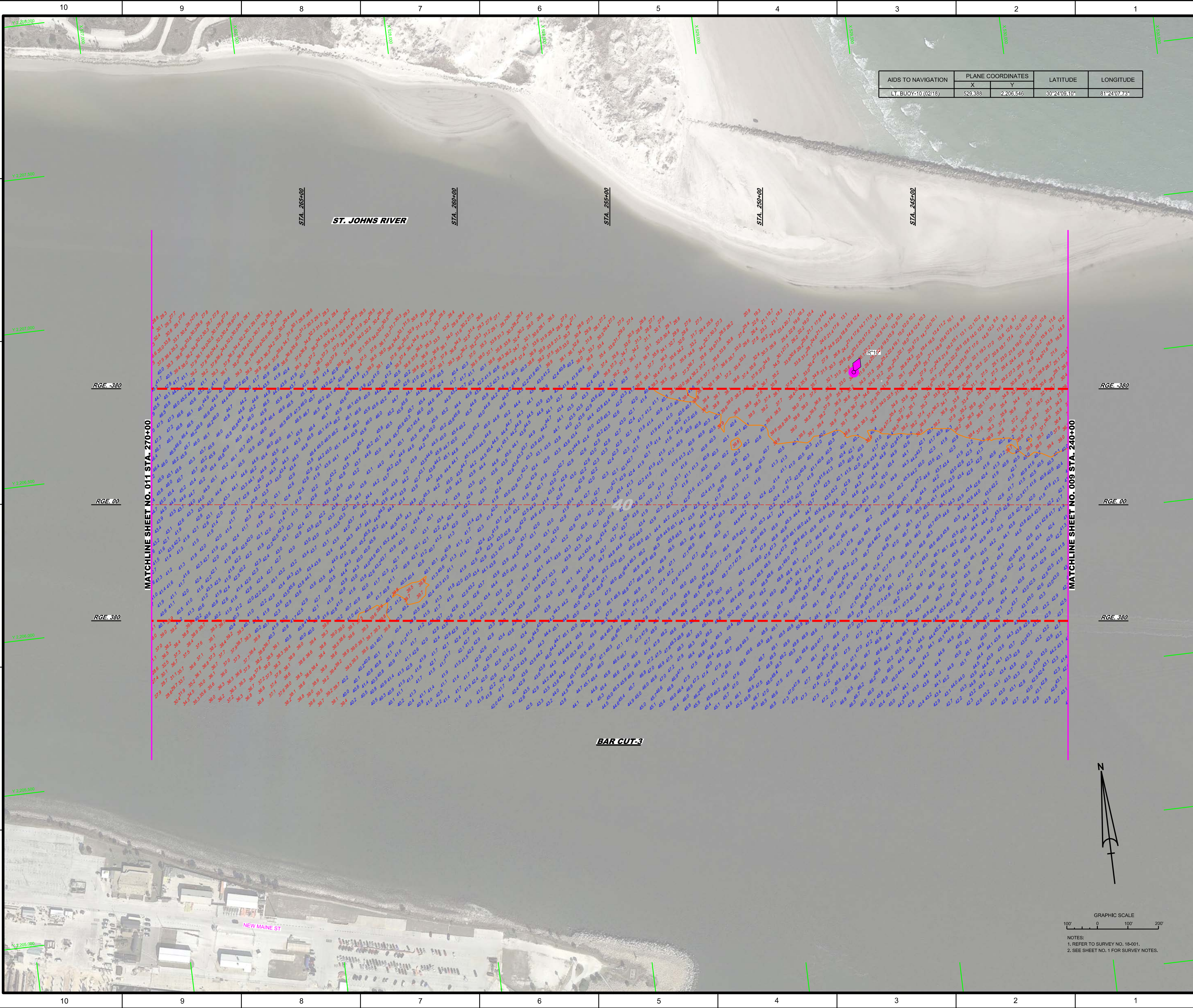
AIDS TO NAVIGATION	PLANE COORDINATES		LATITUDE	LONGITUDE
	X	Y		
LT. BUOY-7 (02/18)	534832	2204944	30°23'53.44"	81°23'05.50"
LT. BUOY-8 (02/18)	535230	2205772	30°24'01.65"	81°23'00.99"



NOTES:  
1. REFER TO SURVEY NO. 18-001.  
2. SEE SHEET NO. 1 FOR SURVEY NOTES.







AIDS TO NAVIGATION	PLANE COORDINATES		LATITUDE	LONGITUDE
	X	Y		
LT. BUOY-10 (02/18)	529,388	2,206,546	30°24'09.10"	81°24'07.73"

US Army Corps of Engineers  
Jacksonville District

**SAFETY ON THIS JOB  
DEPENDS ON YOU**

Name	Title	Date	Revision	Description	Scale

Designed by: <b>WRM</b> Drawn by: <b>WRM</b> Check by: <b>GHR</b> Date: <b>FEB 2018</b>	<b>DEPARTMENT OF THE ARMY</b> <b>JACKSONVILLE DISTRICT, CORPS OF ENGINEERS</b> <b>JACKSONVILLE, FLORIDA</b>
--	---

**JACKSONVILLE HARBOR, FLORIDA**  
**ANNUAL EXAMINATION SURVEY FY18**  
**30, 34, 38, 40 & 42-FOOT PROJECT**  
**PLAN**  
 STA. 240+00 THRU STA. 270+00 BAR CUT-3

Scale: AS SHOWN

Drawing no. **10**

SHEET 10 OF 57

