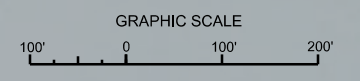
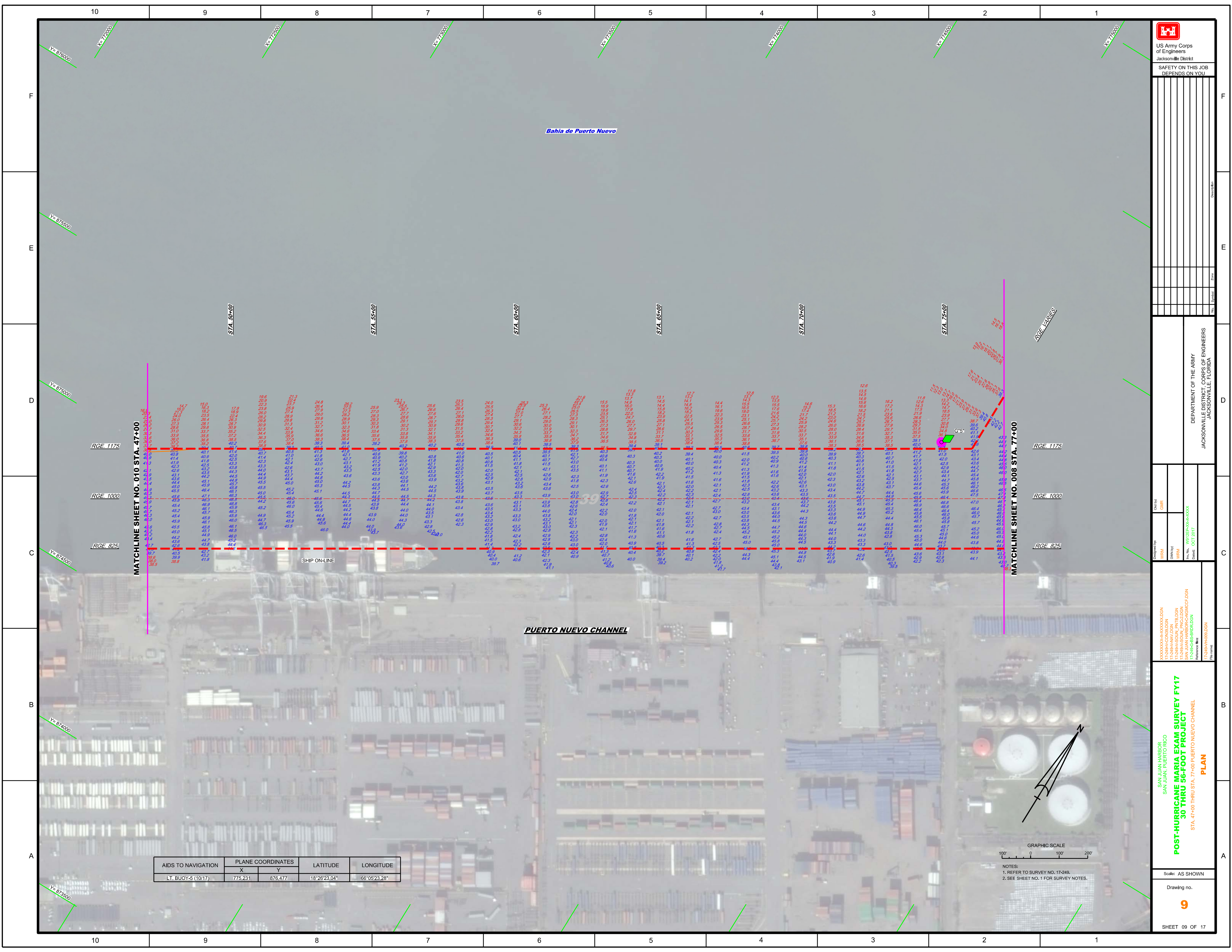


AIDS TO NAVIGATION	PLANE COORDINATES		LATITUDE	LONGITUDE
	X	Y		
LT BUOY-4 (10/17)	775.199	877.635	18°26'34.53"	66°05'23.59"
LT-5 (10/17)	776.464	877.721	18°26'35.35"	66°05'10.45"
FRTRANGE LT (10/17)	776.470	876.953	18°26'27.74"	66°05'10.41"



NOTES:  
1. REFER TO SURVEY NO. 17-249.  
2. SEE SHEET NO. 1 FOR SURVEY NOTES.



US Army Corps of Engineers  
 Jacksonville District  
 SAFETY ON THIS JOB  
 DEPENDS ON YOU

---

DEPARTMENT OF THE ARMY  
 JACKSONVILLE DISTRICT, CORPS OF ENGINEERS  
 JACKSONVILLE, FLORIDA

---

Drawn by: **WMR**  
 Checked by: **WMR**  
 Date: **OCT 2017**

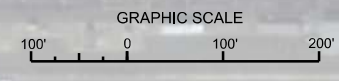
---

**POST-HURRICANE MARIA EXAM SURVEY FY17**  
**30 THRU 56-FOOT PROJECT**  
 STA. 47+00 THRU STA. 77+00 PUERTO NUEVO CHANNEL  
**PLAN**

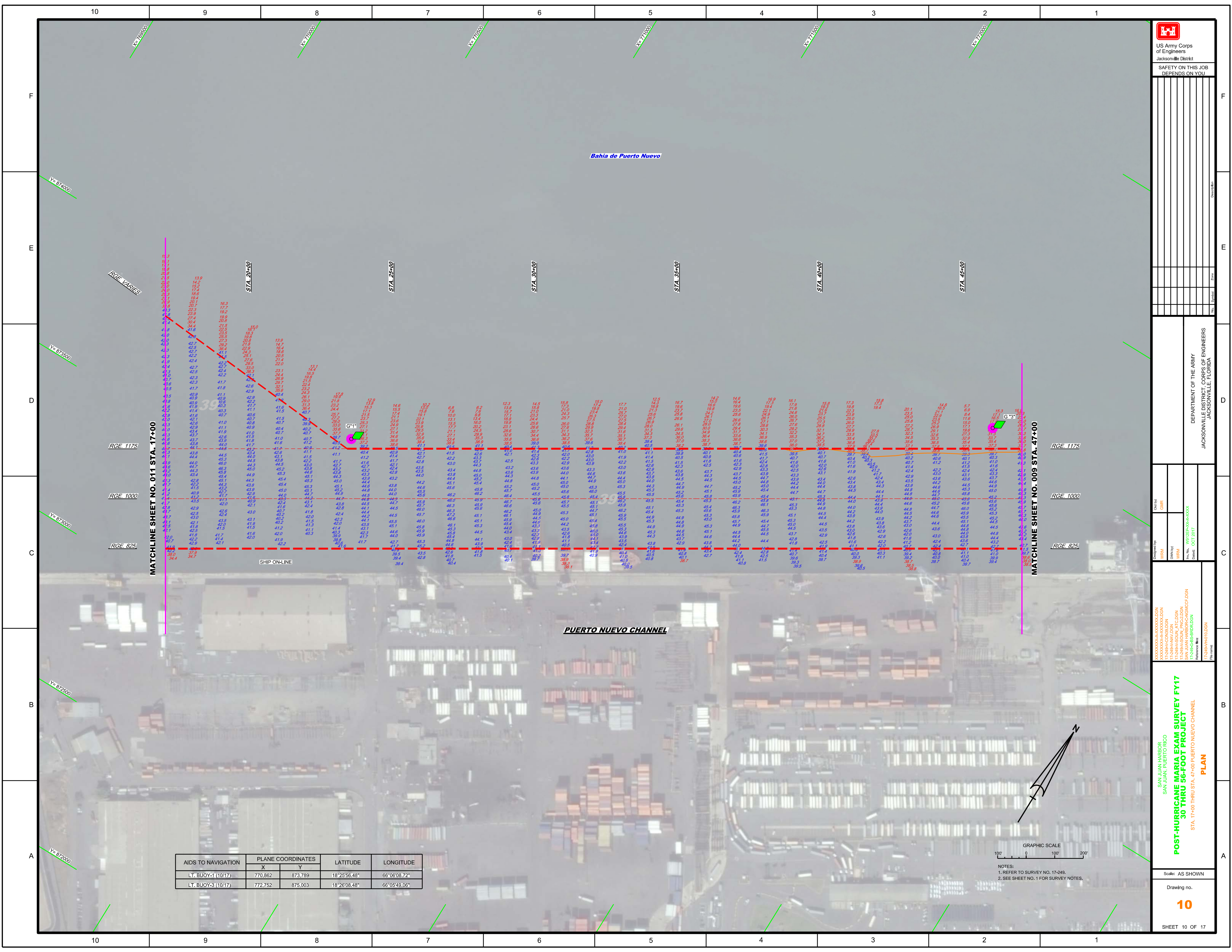
---

Scale: AS SHOWN  
 Drawing no. **9**  
 SHEET 09 OF 17

AIDS TO NAVIGATION	PLANE COORDINATES		LATITUDE	LONGITUDE
	X	Y		
LT. BUOY-5 (10/17)	775 231	876 477	18° 26' 23.04"	66° 05' 23.28"



NOTES:  
 1. REFER TO SURVEY NO. 17-249.  
 2. SEE SHEET NO. 1 FOR SURVEY NOTES.

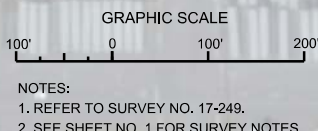


US Army Corps of Engineers
   
 Jacksonville District
   
 SAFETY ON THIS JOB
   
 DEPENDS ON YOU

DEPARTMENT OF THE ARMY
   
 JACKSONVILLE DISTRICT, CORPS OF ENGINEERS
   
 JACKSONVILLE, FLORIDA

SAN JUAN HARBOR
   
 SAN JUAN, PUERTO RICO
   
**POST-HURRICANE MARIA EXAM SURVEY FY17**
  
**30 THRU 56-FOOT PROJECT**
  
 STA. 17+00 THRU STA. 47+00 PUERTO NUEVO CHANNEL
   
**PLAN**

AIDS TO NAVIGATION	PLANE COORDINATES		LATITUDE	LONGITUDE
	X	Y		
LT. BUOY-1 (10/17)	770.862	873.789	18°25'56.48"	66°06'08.72"
LT. BUOY-3 (10/17)	772.752	875.003	18°26'08.48"	66°05'49.06"



AIDS TO NAVIGATION	PLANE COORDINATES		LATITUDE	LONGITUDE
	X	Y		
Lt. BUOY-6 (10/17)	768.413	875.572	18°26'14.19"	66°06'34.12"
Lt. BUOY-7 (10/17)	768.984	874.749	18°26'06.03"	66°06'28.20"
Lt. BUOY-9 (11/17)	769.781	873.369	18°25'57.29"	66°06'19.84"

Bahia de Puerto Nuevo

ARMY TERMINAL CHANNEL

ARMY TERMINAL TURNING BASIN

MATCHLINE SHEET NO. 010 STA. 17+00

PUERTO NUEVO CHANNEL

SABANA APPROACH CHANNEL



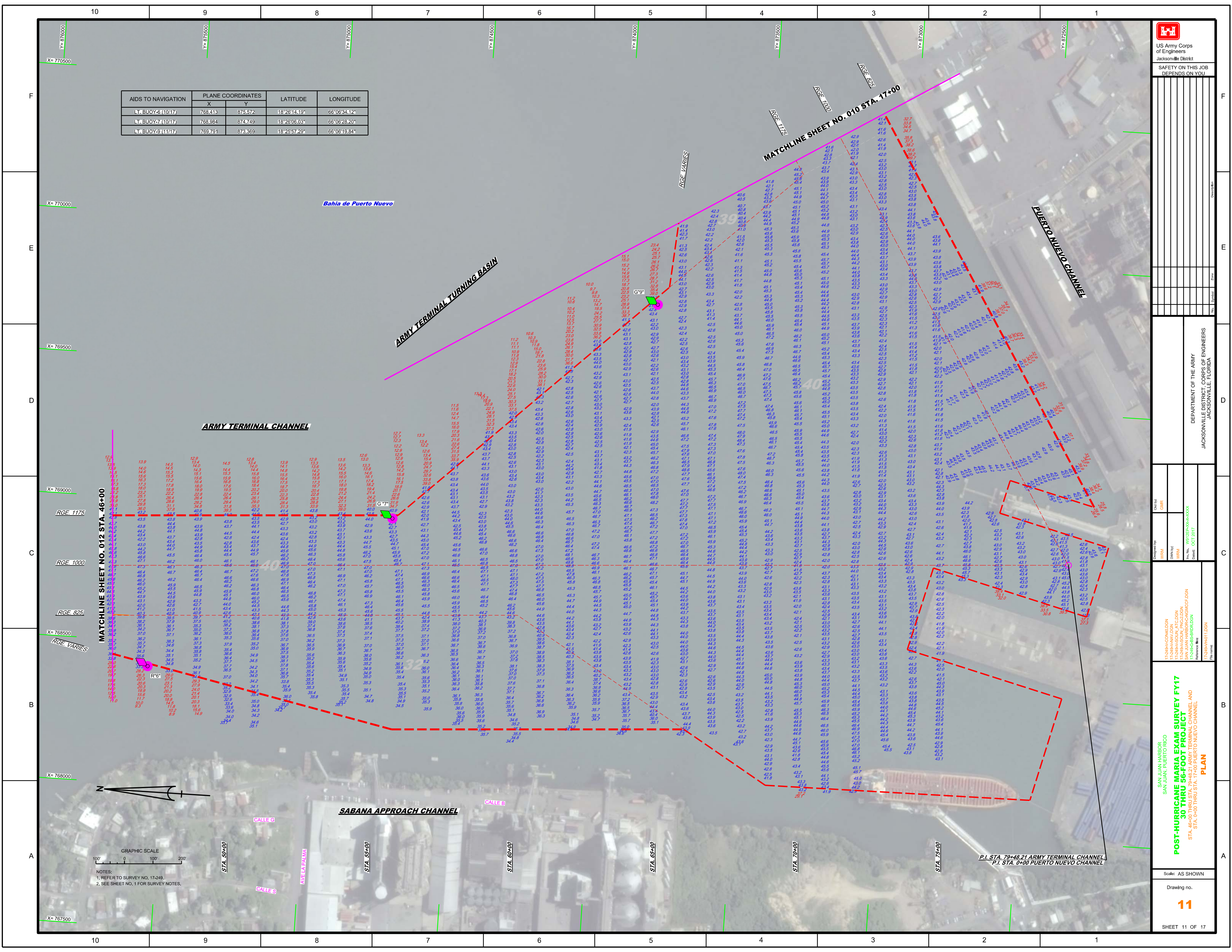
NOTES:  
1. REFER TO SURVEY NO. 17-249.  
2. SEE SHEET NO. 1 FOR SURVEY NOTES.

US Army Corps of Engineers  
Jacksonville District  
SAFETY ON THIS JOB  
DEPENDS ON YOU

DEPARTMENT OF THE ARMY  
JACKSONVILLE DISTRICT, CORPS OF ENGINEERS  
JACKSONVILLE, FLORIDA

San Juan Harbor  
San Juan, Puerto Rico  
POST-HURRICANE MARIA EXAM SURVEY FY17  
30 THRU 56-FOOT PROJECT  
STA. 46+00 THRU STA. 79+82.1 ARMY TERMINAL CHANNEL AND  
STA. 0+00 THRU STA. 17+00 PUERTO NUEVO CHANNEL  
PLAN

Scale: AS SHOWN  
Drawing no. 11  
SHEET 11 OF 17







US Army Corps of Engineers  
Jacksonville District

SAFETY ON THIS JOB  
DEPENDS ON YOU

No.	Symbol	Zone	Description

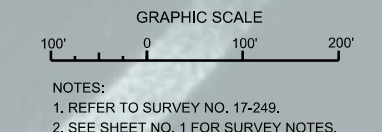
DEPARTMENT OF THE ARMY  
JACKSONVILLE DISTRICT, CORPS OF ENGINEERS  
JACKSONVILLE, FLORIDA

Call by: GHR  
Designed by: WRM  
Drawn by: WRM  
File No: W17248-00-00-0003  
Date: OCT 2017

XXXXXXXXXXXXXXXXXXXX  
SAN JUAN HARBOUR  
SAN JUAN, PUERTO RICO  
17-248-00-00-0003.DWG  
SAN JUAN HARBOUR CANALS  
SAN JUAN HARBOUR CANALS  
17-248-00-00-0003.DWG  
Reference: WRM  
File name: 17-248-00-00-0003.DWG

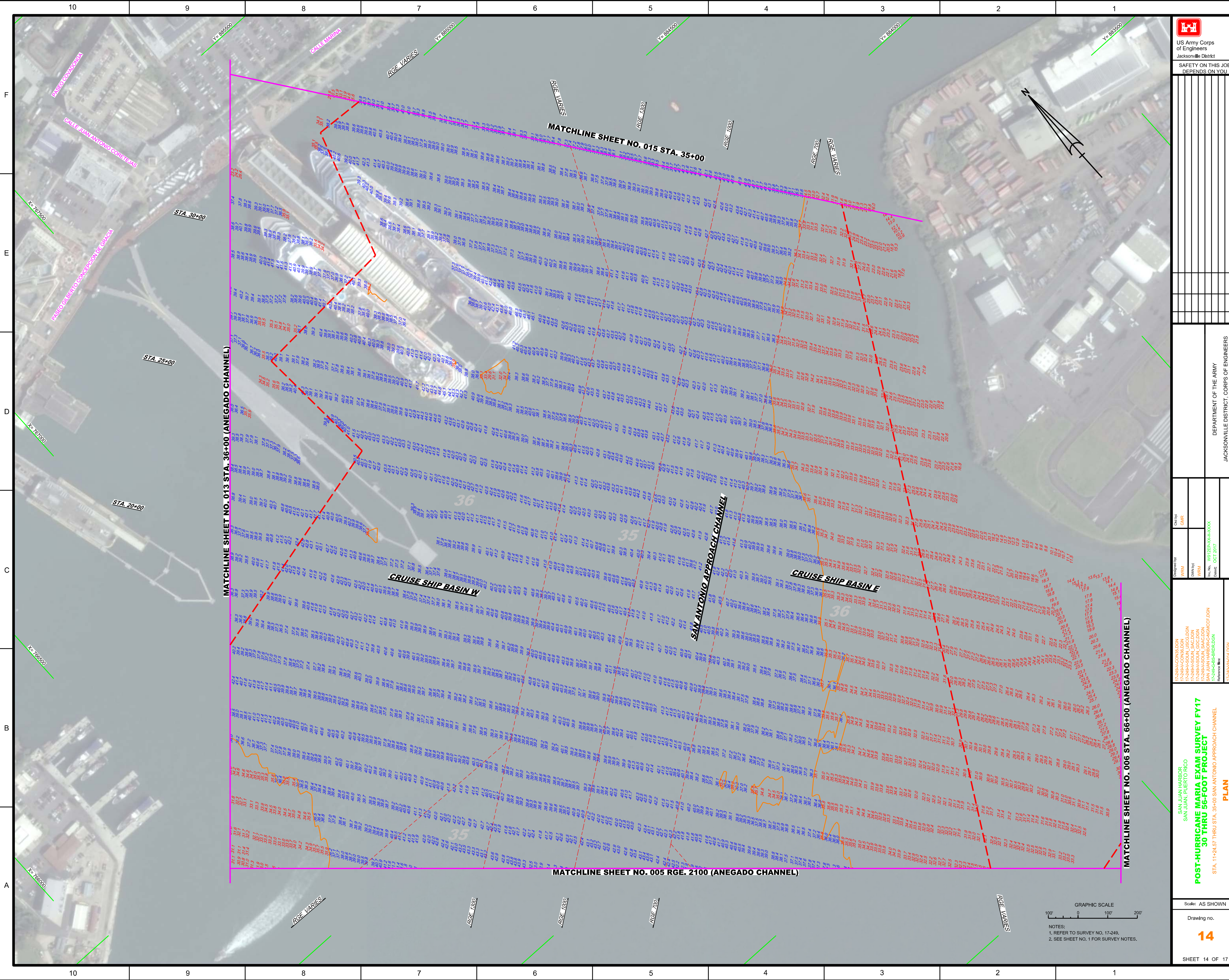
**POST-HURRICANE MARIA EXAM SURVEY FY17**  
**30 THRU 56-FOOT PROJECT**  
STA. 11+24.57 THRU STA. 35+00 SAN ANTONIO APPROACH CHANNEL  
**PLAN**

Scale: AS SHOWN  
Drawing no.  
**13**  
SHEET 13 OF 17



NOTES:  
1. REFER TO SURVEY NO. 17-248,  
2. SEE SHEET NO. 1 FOR SURVEY NOTES.

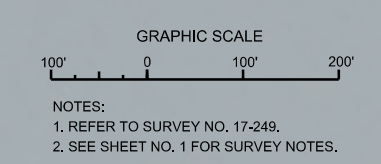
AIDS TO NAVIGATION	PLANE COORDINATES		LATITUDE	LONGITUDE
	X	Y		
MOORING BUOY (10/17)	766,566	884,542	18°27'43.15"	66°06'53.14"

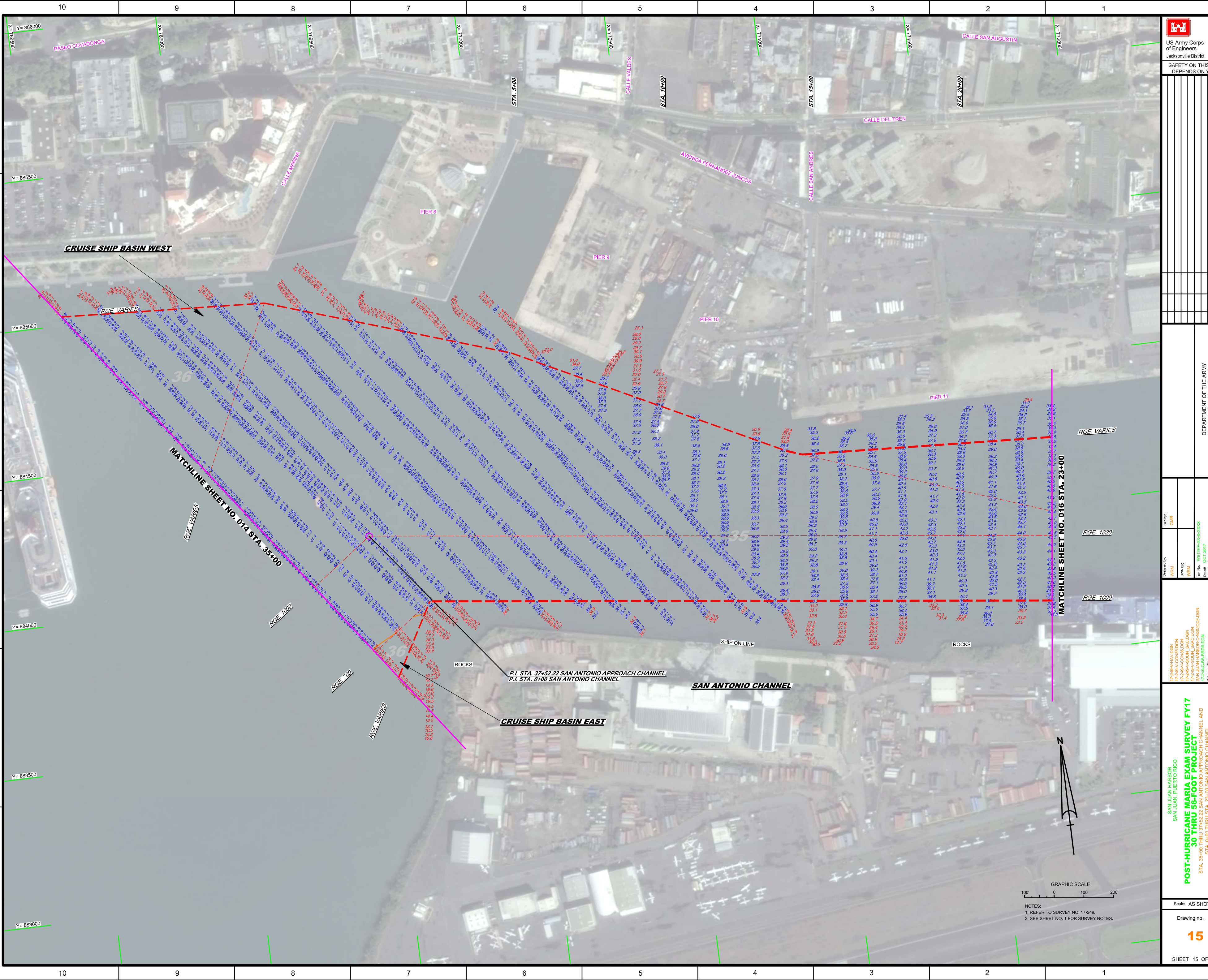



**US Army Corps of Engineers**  
 Jacksonville District  
**SAFETY ON THIS JOB**  
 DEPENDS ON YOU

Check By:	GHR
Designed By:	WRM
Drawn By:	WRM
File No.:	17-249-000-000-000
Date:	OCT 2017

17-249-000-000-000  
 17-249-000-000-000  
 17-249-000-000-000  
 17-249-000-000-000  
 17-249-000-000-000







US Army Corps of Engineers  
Jacksonville District

SAFETY ON THIS JOB  
DEPENDS ON YOU

---

Call by: GHR

Designed by: WRM

Drawn by: WRM

Checked by: WRM

Reference files: 17-249-BAV-DGN, 17-249-BAV-CON, 17-249-BAV-SAC-DGN, 17-249-BAV-SAC-CON, 17-249-BS-BRID-DGN, 17-249-BS-BRID-CON

DEPARTMENT OF THE ARMY  
JACKSONVILLE DISTRICT, CORPS OF ENGINEERS  
JACKSONVILLE, FLORIDA

Project No. 17-249-BAV-0000  
Date: OCT 2017

17-249-BAV-0150  
Plan name

---

**POST-HURRICANE MARIA EXAM SURVEY FY17**  
**30 THRU 56-FOOT PROJECT**  
STA. 35+00 THRU 37+52.22 SAN ANTONIO APPROACH CHANNEL AND  
STA. 0+00 THRU STA. 23+00 SAN ANTONIO CHANNEL

**PLAN**

---

Scale: AS SHOWN

Drawing no.

**15**

SHEET 15 OF 17







**US Army Corps of Engineers**  
 Jacksonville District  
 SAFETY ON THIS JOB  
 DEPENDS ON YOU

Date:	
Drawn By:	WRM
Checked By:	GHR
File Name:	17-249-PR17.DGN
Project Name:	POST-HURRICANE MARIA EXAM SURVEY FY17 30 THRU 56-FOOT PROJECT EXTENSION OF SAN ANTONIO CHANNEL TO SAN JUAN MARINA <b>PLAN</b>
Drawn:	WRM
Checked:	WRM
Date:	OCT 2017

DEPARTMENT OF THE ARMY  
 JACKSONVILLE DISTRICT, CORPS OF ENGINEERS  
 JACKSONVILLE, FLORIDA

Scale: AS SHOWN	17	
Drawing no.		
SHEET 17 OF 17		