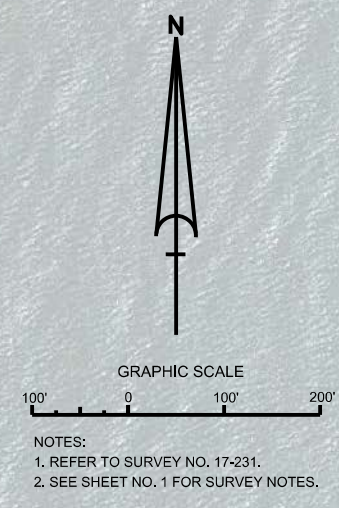


AIDS TO NAVIGATION	PLANE COORDINATES		LATITUDE	LONGITUDE
	X	Y		
CAN BUOY (0647)	391135	639836	26°05'30.07"	81°48'26.87"
NUN BUOY (0647)	391114	639506	26°05'26.80"	81°48'27.30"



US Army Corps of Engineers
 Jacksonville District
 SAFETY ON THIS JOB
 DEPENDS ON YOU

DEPARTMENT OF THE ARMY
 JACKSONVILLE DISTRICT, CORPS OF ENGINEERS
 JACKSONVILLE, FLORIDA

Drawn by: GHR
 Check by: GHR

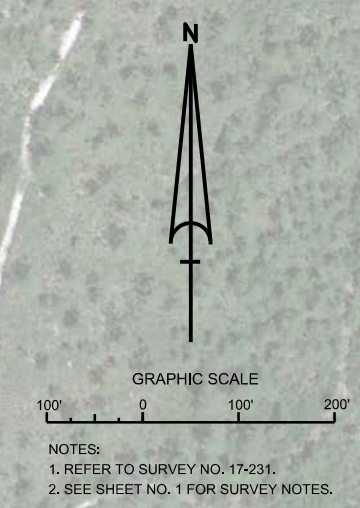
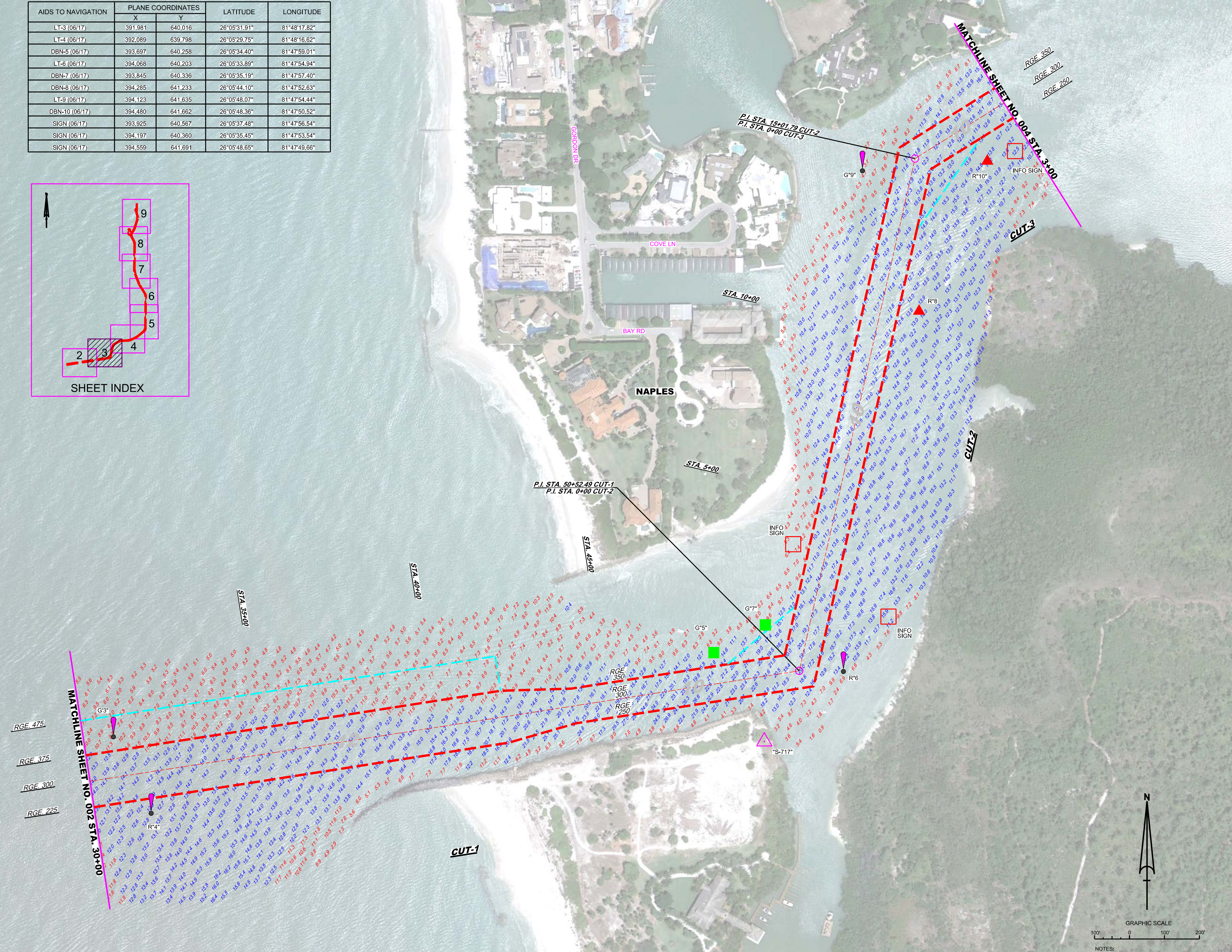
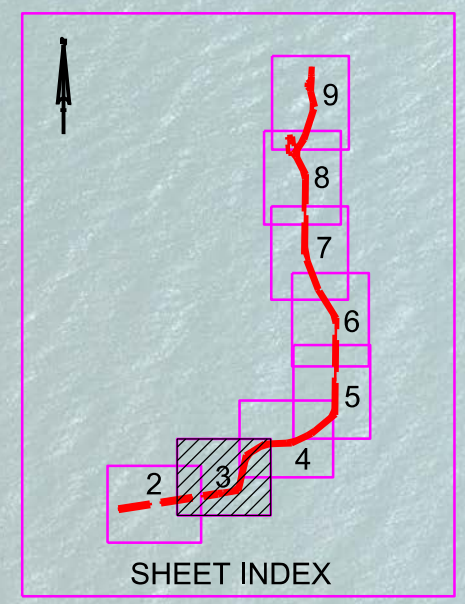
Designed by: WRM
 DWN by: WRM
 File No: W12255-00-0000
 Date: JUN 2017


XXXXXXXXXXXXXXXXXXXX
 XXXXXXXXXXXXXXXXXXXX
 XXXXXXXXXXXXXXXXXXXX
 NKP231-65-0000
 Reference: 17-231-65-0000

MAPLES TO GORBON PASS
 COLLIER COUNTY, FLORIDA
**POST-HURRICANE IRMA EXAM SURVEY FY17
 8, 10 & 12-FOOT PROJECT**
 STA. 0+00 THRU STA. 30+00 CUT-1
PLAN

Scale: AS SHOWN
 Drawing no. **2**
 SHEET 02 OF 09

AIDS TO NAVIGATION	PLANE COORDINATES		LATITUDE	LONGITUDE
	X	Y		
LT-3 (06/17)	391.981	640.016	26°05'31.91"	81°48'17.82"
LT-4 (06/17)	392.089	639.798	26°05'29.75"	81°48'16.62"
DBN-5 (06/17)	393.697	640.258	26°05'34.40"	81°47'59.01"
LT-6 (06/17)	394.068	640.203	26°05'33.89"	81°47'54.94"
DBN-7 (06/17)	393.845	640.336	26°05'35.19"	81°47'57.40"
DBN-8 (06/17)	394.285	641.233	26°05'44.10"	81°47'52.63"
LT-9 (06/17)	394.123	641.635	26°05'48.07"	81°47'54.44"
DBN-10 (06/17)	394.480	641.662	26°05'48.36"	81°47'50.52"
SIGN (06/17)	393.925	640.567	26°05'37.48"	81°47'56.54"
SIGN (06/17)	394.197	640.360	26°05'35.45"	81°47'53.54"
SIGN (06/17)	394.559	641.691	26°05'48.65"	81°47'49.66"





US Army Corps of Engineers
Jacksonville District

SAFETY ON THIS JOB
DEPENDS ON YOU

DEPARTMENT OF THE ARMY
JACKSONVILLE DISTRICT, CORPS OF ENGINEERS
JACKSONVILLE, FLORIDA

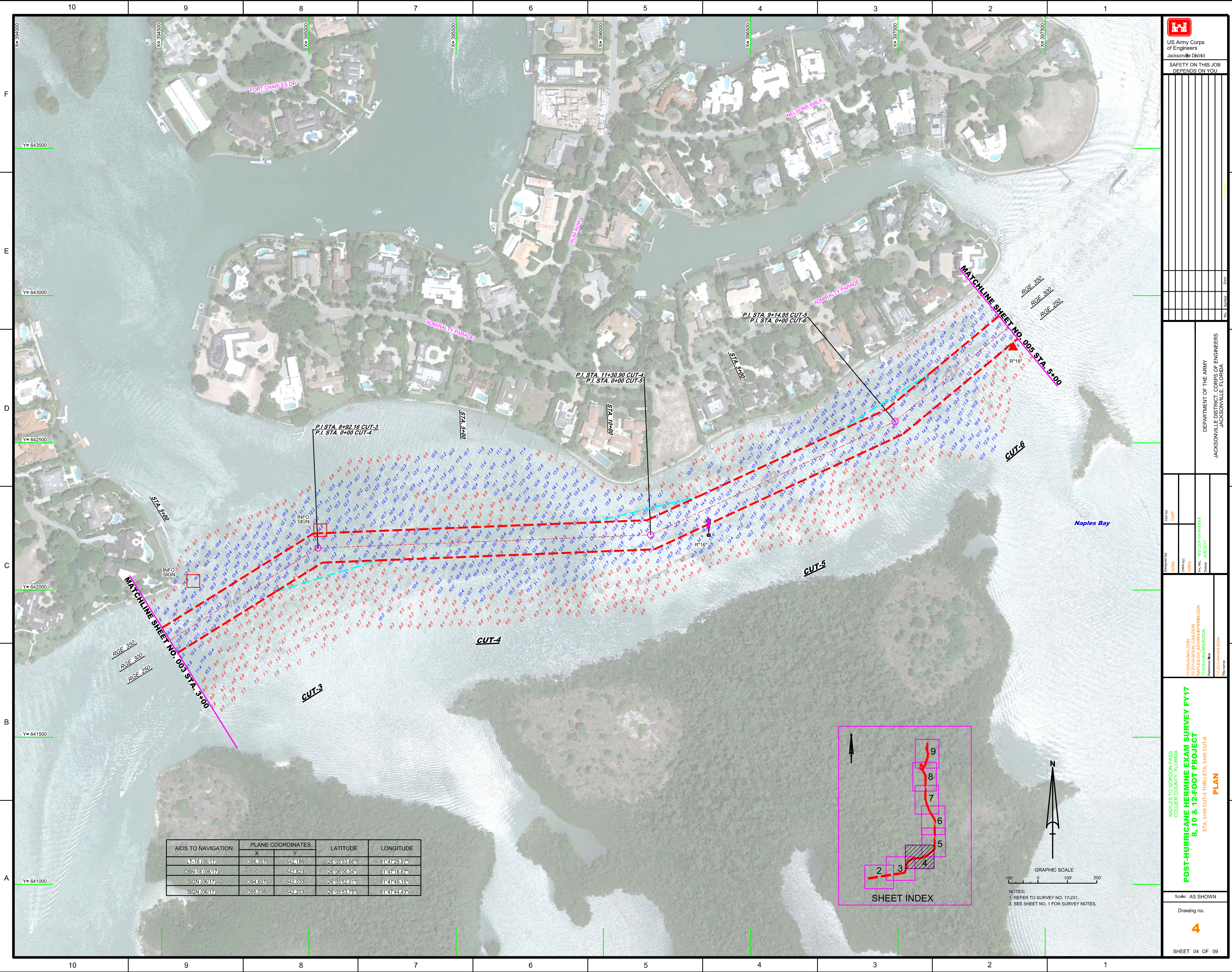
Call by: GMR
Designed by: WRM
Drawn by: WRM
File No: 17-231-PA-SOIL-CADON
17-231-PA-SOIL-CADON
17-231-PA-SOIL-CADON
17-231-PA-SOIL-CADON
Reference Map: 17-231-PA-R01010N
File Name: 17-231-PA-R01010N

POST-HURRICANE IRMA EXAM SURVEY FY17
8, 10 & 12-FOOT PROJECT
STA. 30+00 CUT-3 THRU STA. 3+00 CUT-3
PLAN


Scale: AS SHOWN

Drawing no.
3

SHEET 03 OF 09



AIDS TO NAVIGATION	PLANE COORDINATES		LATITUDE	LONGITUDE
	X	Y		
LT-16 (0617)	398.357	642.186	26°05'53.66"	81°47'29.97"
DBN-18 (0617)	0	642.823	26°06'00.04"	81°47'18.67"
SIGN (0617)	394.607	642.030	26°05'52.01"	81°47'49.15"
SIGN (0617)	395.038	642.203	26°05'53.75"	81°47'44.43"



US Army Corps of Engineers
Jacksonville District

**SAFETY ON THIS JOB
DEPENDS ON YOU**

DEPARTMENT OF THE ARMY
JACKSONVILLE DISTRICT, CORPS OF ENGINEERS
JACKSONVILLE, FLORIDA

Drawn by: GHR
Checked by: GHR

Designed by: WRM
Reviewed by: WRM

Project No: 17-0355-HAV-DCN
Task No: 17-0355-CB-8B-0001
Contract: JUN 2017

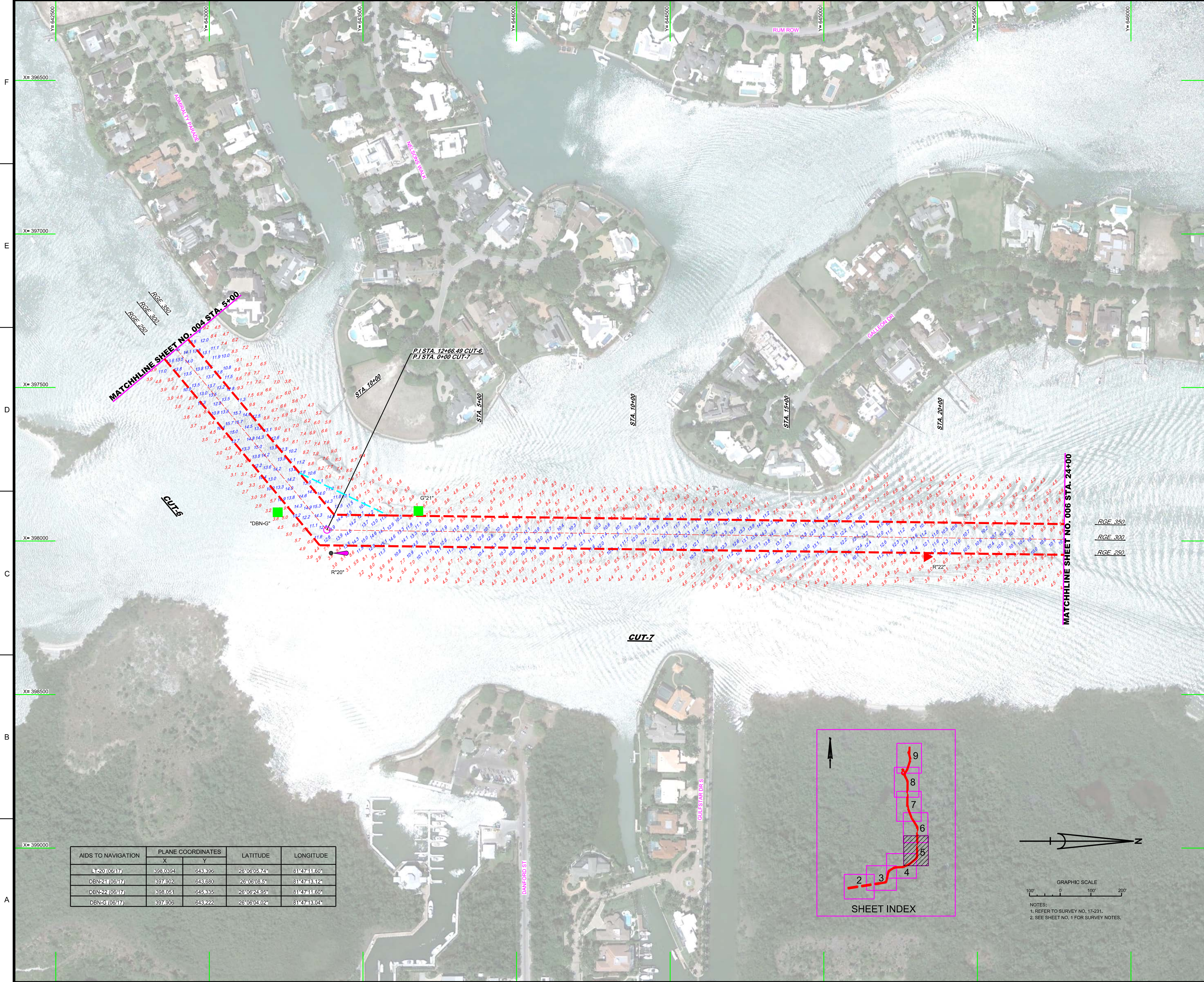
POST-HURRICANE HERMINE EXAM SURVEY FY17
8, 10 & 12-FOOT PROJECT
STA. 3+00 CUT-3 THRU STA. 5+00 CUT-6
PLAN

Scale: AS SHOWN

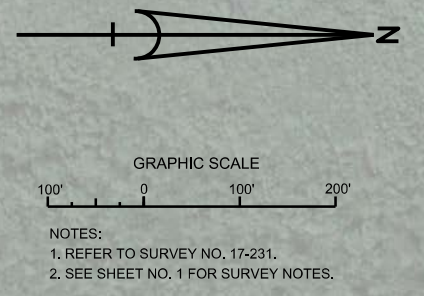
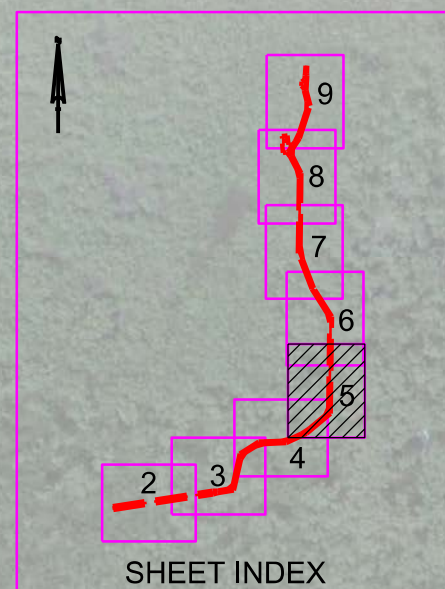
Drawing no.
4

SHEET 04 OF 09

10 9 8 7 6 5 4 3 2 1



AIDS TO NAVIGATION	PLANE COORDINATES		LATITUDE	LONGITUDE
	X	Y		
LT-20 (08/17)	398.0394	643.396	26°06'05.74"	81°47'11.60"
DBN-21 (08/17)	397.902	643.680	26°06'08.5"	81°47'18.12"
DBN-22 (08/17)	398.051	645.335	26°06'24.95"	81°47'11.60"
DBN-G (08/17)	397.906	643.222	26°06'04.02"	81°47'13.04"



US Army Corps of Engineers
 Jacksonville District
 SAFETY ON THIS JOB
 DEPENDS ON YOU

DEPARTMENT OF THE ARMY
 JACKSONVILLE DISTRICT, CORPS OF ENGINEERS
 JACKSONVILLE, FLORIDA

Drawn by: GHR
 Checked by: GHR
 Design: JUN 2017

XXXXXXXXXXXXXXXXXXXX
 17-231-001
 17-231-002
 17-231-003
 17-231-004
 17-231-005
 17-231-006
 17-231-007
 17-231-008
 17-231-009
 17-231-010
 17-231-011
 17-231-012
 17-231-013
 17-231-014
 17-231-015
 17-231-016
 17-231-017
 17-231-018
 17-231-019
 17-231-020

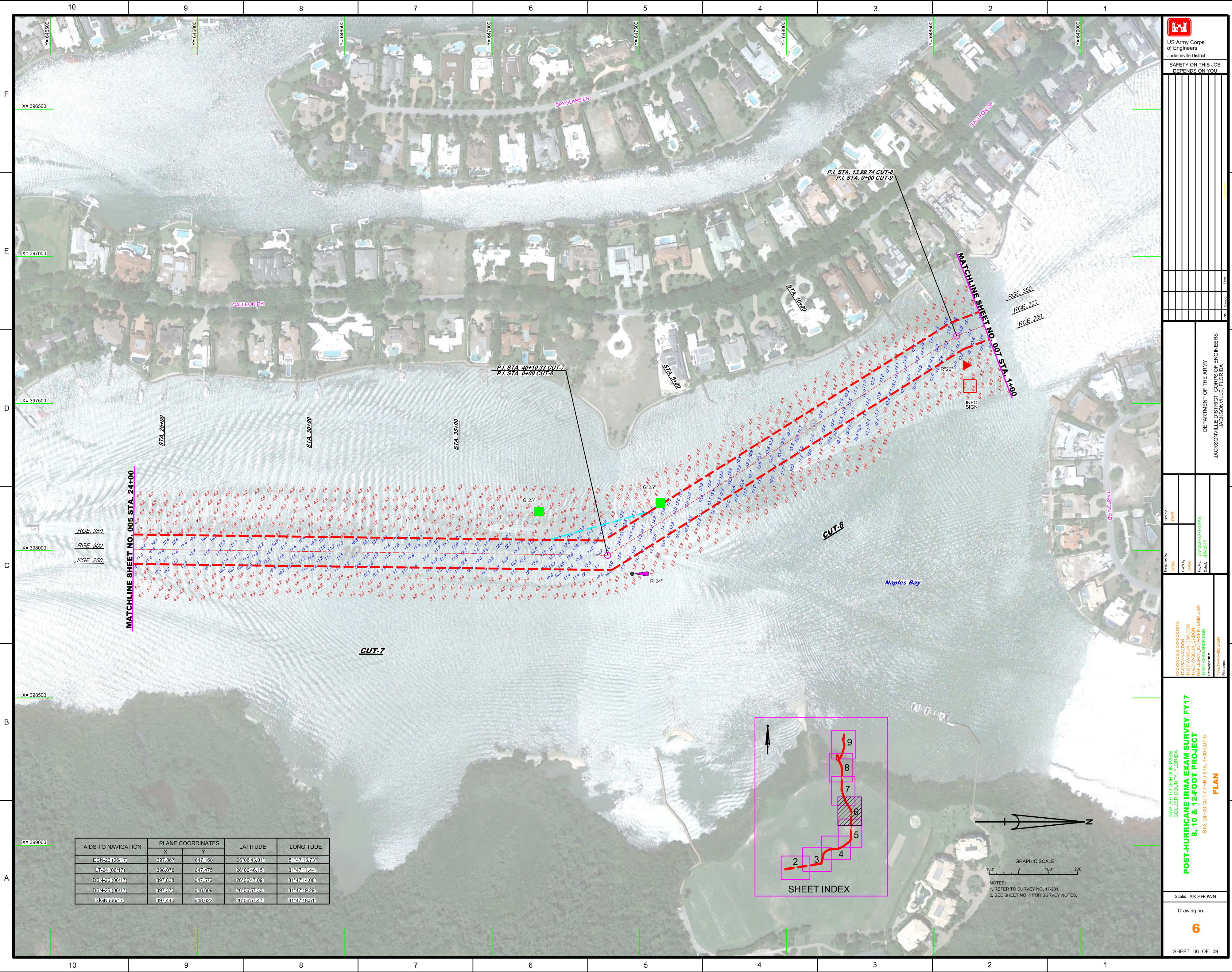
**POST-HURRICANE IRMA EXAM SURVEY FY17
 8, 10 & 12-FOOT PROJECT**

STA. 5+00 CUT-6 THRU STA. 24+00 CUT-7

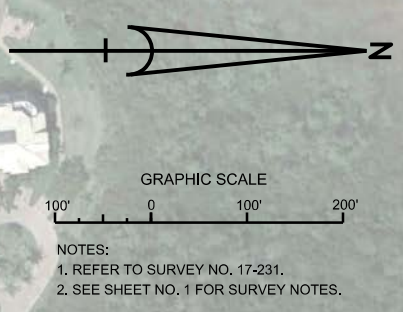
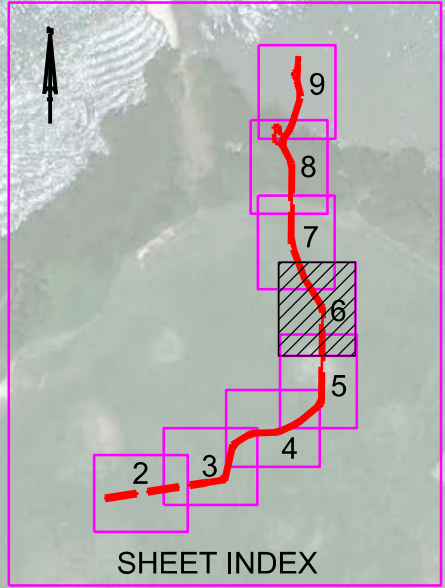
PLAN

Drawing no. **5**

SHEET 05 OF 09



AIDS TO NAVIGATION	PLANE COORDINATES		LATITUDE	LONGITUDE
	X	Y		
DBN-23 (06/17)	397,867	647,160	26°06'48.01"	81°47'48.73"
LT-24 (06/17)	398,078	647,475	26°06'46.15"	81°47'41.44"
DBN-25 (06/17)	397,838	647,572	26°06'47.09"	81°47'44.08"
DBN-26 (06/17)	397,370	648,609	26°06'57.33"	81°47'49.29"
SIGN (06/17)	397,440	648,622	26°06'57.47"	81°47'48.51"



NOTES:
 1. REFER TO SURVEY NO. 17-231.
 2. SEE SHEET NO. 1 FOR SURVEY NOTES.

US Army Corps of Engineers
 Jacksonville District

SAFETY ON THIS JOB
 DEPENDS ON YOU

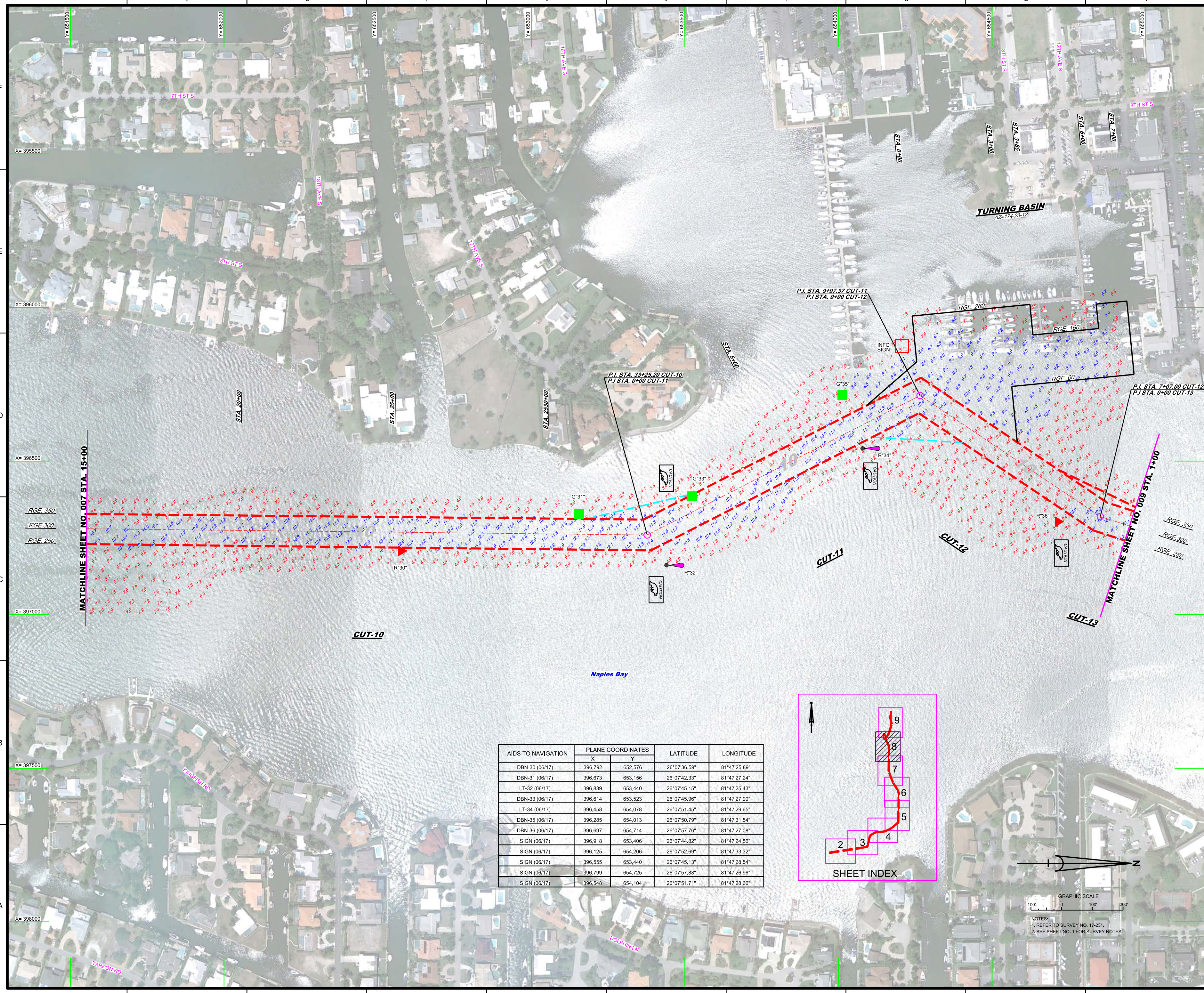
DEPARTMENT OF THE ARMY
 JACKSONVILLE DISTRICT, CORPS OF ENGINEERS
 JACKSONVILLE, FLORIDA

POST-HURRICANE IRMA EXAM SURVEY FY17
8, 10 & 12-FOOT PROJECT
 STA. 24+00 CUT-7 THRU STA. 1+00 CUT-9
PLAN

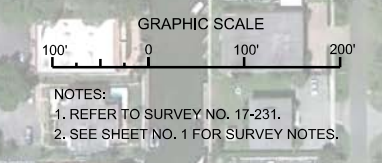
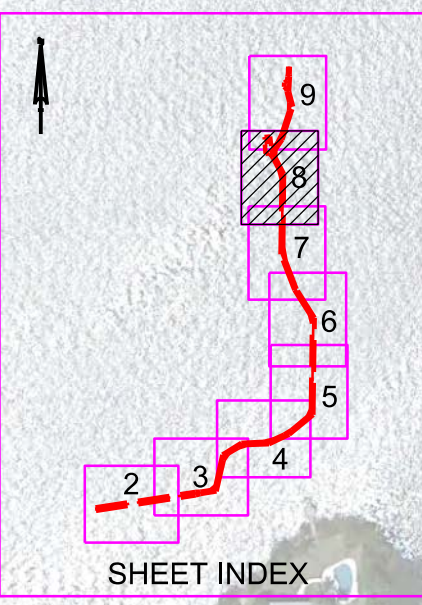
Scale: AS SHOWN

Drawing no.
6

SHEET 06 OF 09



AIDS TO NAVIGATION	PLANE COORDINATES		LATITUDE	LONGITUDE
	X	Y		
DBN-30 (06/17)	396,792	652,576	26°07'36.59"	81°47'25.89"
DBN-31 (06/17)	396,673	653,156	26°07'42.33"	81°47'27.24"
LT-32 (06/17)	396,839	653,440	26°07'45.15"	81°47'25.43"
DBN-33 (06/17)	396,614	653,523	26°07'45.96"	81°47'27.90"
LT-34 (06/17)	396,458	654,078	26°07'51.45"	81°47'29.65"
DBN-35 (06/17)	396,285	654,013	26°07'50.79"	81°47'31.54"
DBN-36 (06/17)	396,697	654,714	26°07'57.76"	81°47'27.08"
SIGN (06/17)	396,918	653,406	26°07'44.82"	81°47'24.56"
SIGN (06/17)	396,125	654,206	26°07'52.69"	81°47'33.32"
SIGN (06/17)	396,555	653,440	26°07'45.13"	81°47'28.54"
SIGN (06/17)	396,799	654,725	26°07'57.88"	81°47'26.96"
SIGN (06/17)	396,548	654,104	26°07'51.71"	81°47'28.66"

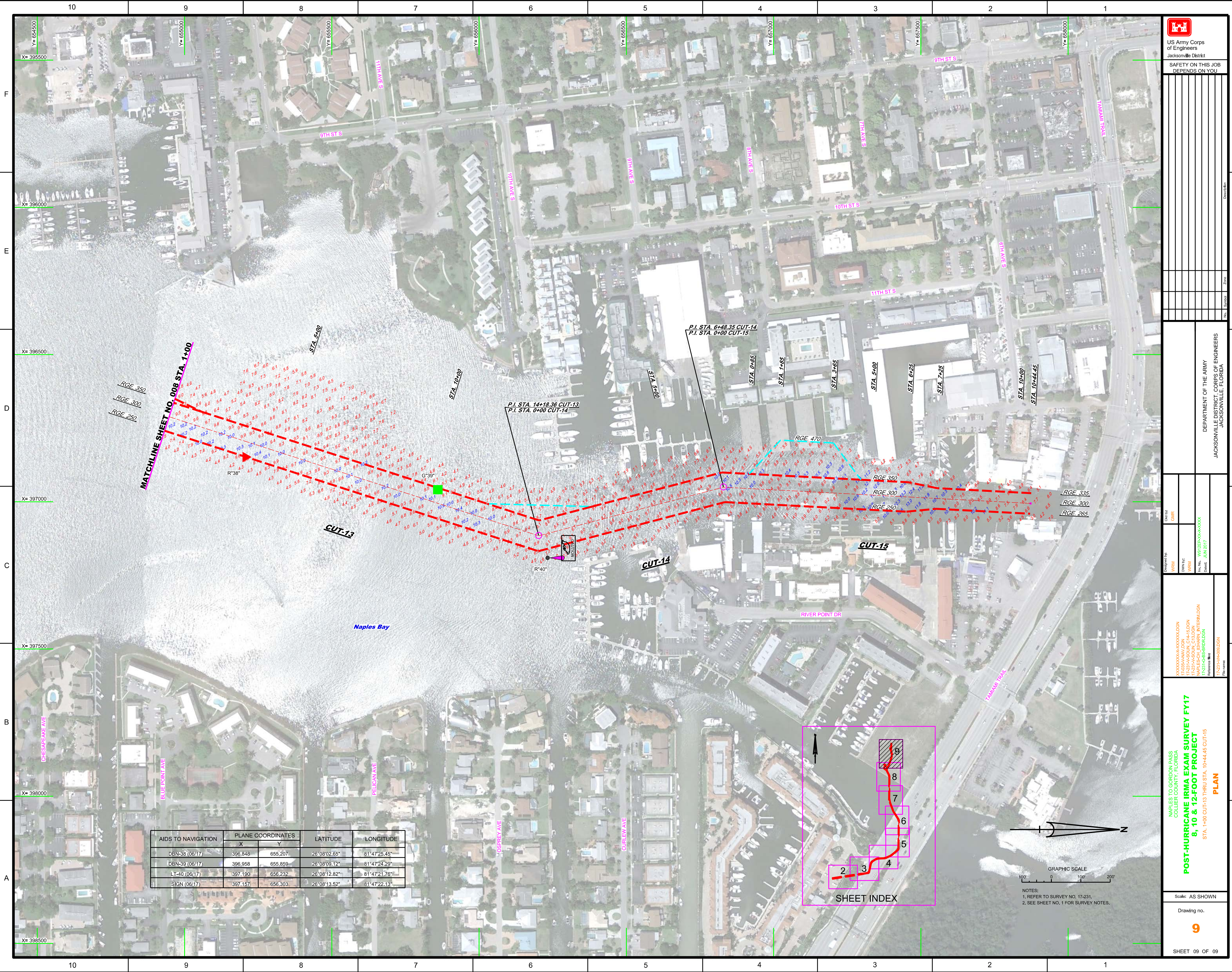


DEPARTMENT OF THE ARMY
 JACKSONVILLE DISTRICT, CORPS OF ENGINEERS
 JACKSONVILLE, FLORIDA

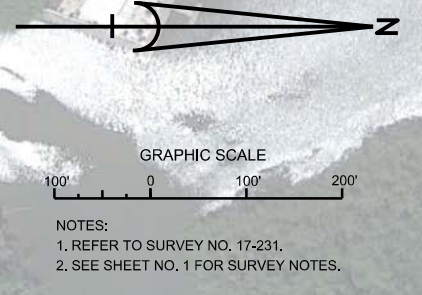
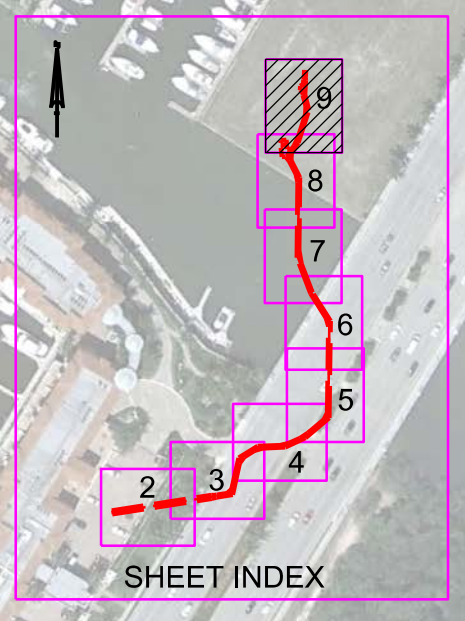
DESIGNED BY: WRM
 CHECKED BY: GHR
 DATE: JUN 2017


MAPLES TO GORCON PASS
 COLLIER COUNTY, FLORIDA
POST-HURRICANE IRMA EXAM SURVEY FY17
8, 10 & 12-FOOT PROJECT
 STA. 15+00 CUT-10 THRU STA. 1+00 CUT-13
PLAN

Scale: AS SHOWN
 Drawing no.
8
 SHEET 08 OF 09



AIDS TO NAVIGATION	PLANE COORDINATES		LATITUDE	LONGITUDE
	X	Y		
DBN-38 (06/17)	396,848	655,207	26°08'02.65"	81°47'25.45"
DBN-39 (06/17)	396,958	655,859	26°08'09.12"	81°47'24.29"
LT-40 (06/17)	397,190	656,232	26°08'12.82"	81°47'21.76"
SIGN (06/17)	397,157	656,303	26°08'13.52"	81°47'22.13"





US Army Corps of Engineers
Jacksonville District
SAFETY ON THIS JOB
DEPENDS ON YOU

DESIGNED BY: WRM
CHECKED BY: WRM
DATE: JUN 2017

PROJECT: MAPLES TO GORDON PASS
COLLIER COUNTY, FLORIDA
POST-HURRICANE IRMA EXAM SURVEY FY17
8, 10 & 12-FOOT PROJECT
STA. +00 CUT-13 THRU STA. 10+44.45 CUT-16
PLAN

Scale: AS SHOWN
Drawing no. **9**
SHEET 09 OF 09