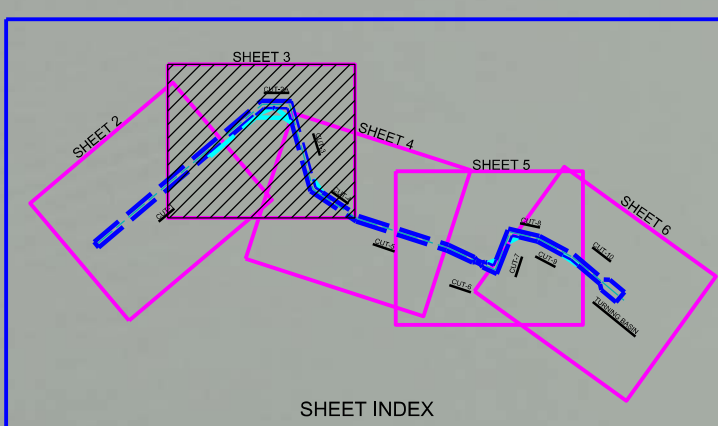
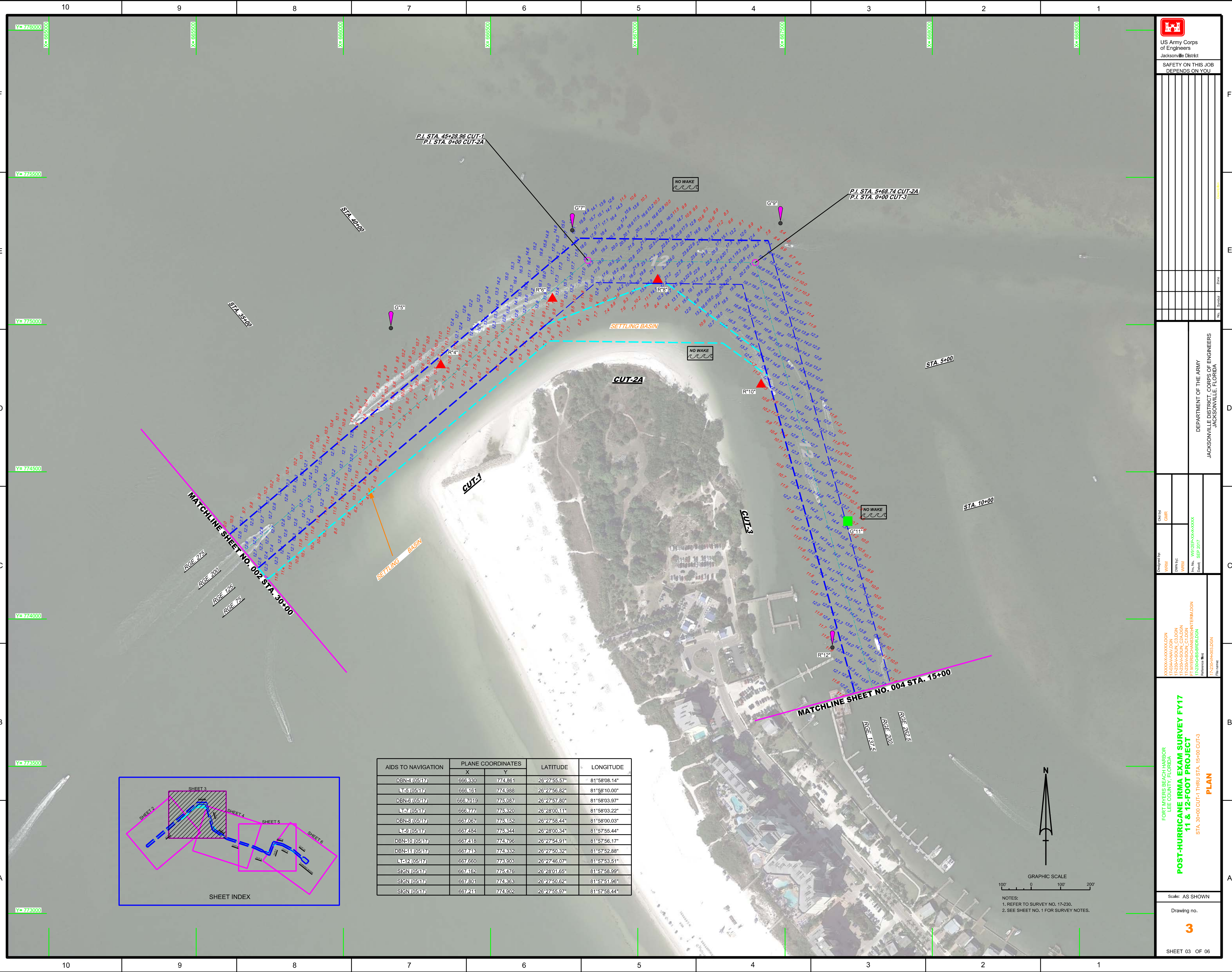


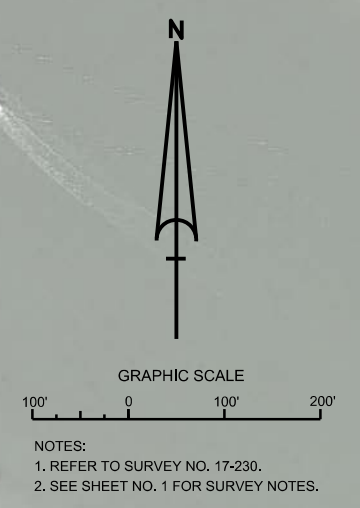
AIDS TO NAVIGATION	PLANE COORDINATES		LATITUDE	LONGITUDE
	X	Y		
DBN-1 (0547)	664445	774205	26°27'39.16"	81°58'28.89"
DBN-2 (0547)	665672	774100	26°27'48.02"	81°58'15.33"
DBN-3 (0547)	665430	774194	26°27'48.96"	81°58'18.05"

**US Army Corps of Engineers**  
 Jacksonville District  
 SAFETY ON THIS JOB  
 DEPENDS ON YOU

DEPARTMENT OF THE ARMY JACKSONVILLE DISTRICT, CORPS OF ENGINEERS JACKSONVILLE, FLORIDA	Drawn by: GHR Checked by: WRM Date: SEP 2017
Project No: 17-230-00-0000 Contract: SEP 2017	Project Name: POST-HURRICANE IRMA EXAM SURVEY FY17 Drawing Title: STA. 0+00 THRU STA. 30+00 CUT-1 PLAN
Scale: AS SHOWN	Drawing no. <b>2</b>
SHEET 02 OF 06	

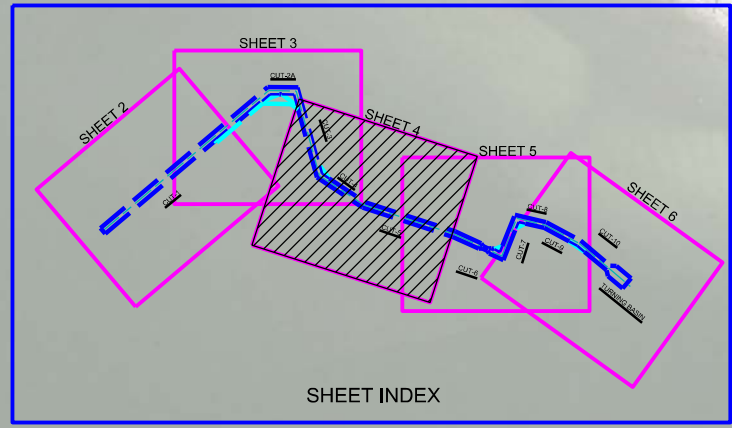


AIDS TO NAVIGATION	PLANE COORDINATES		LATITUDE	LONGITUDE
	X	Y		
DBN-1 (0517)	666,330	774,561	26°27'55.57"	81°58'08.14"
LT-5 (0517)	666,161	774,588	26°27'56.82"	81°58'10.00"
DBN-5 (0517)	666,7019	775,087	26°27'57.80"	81°58'03.97"
LT-7 (0517)	666,777	775,320	26°28'00.11"	81°58'03.22"
DBN-8 (0517)	667,057	775,152	26°27'58.44"	81°58'00.03"
LT-9 (0517)	667,484	775,344	26°28'00.34"	81°57'55.44"
DBN-10 (0517)	667,418	774,796	26°27'54.91"	81°57'56.17"
DBN-11 (0517)	667,743	774,332	26°27'50.32"	81°57'52.88"
LT-12 (0517)	667,660	773,503	26°27'46.07"	81°57'53.51"
SIGN (0517)	667,162	775,476	26°28'01.65"	81°57'58.99"
SIGN (0517)	667,801	774,363	26°27'50.62"	81°57'51.96"
SIGN (0517)	667,241	774,502	26°27'55.97"	81°57'58.44"



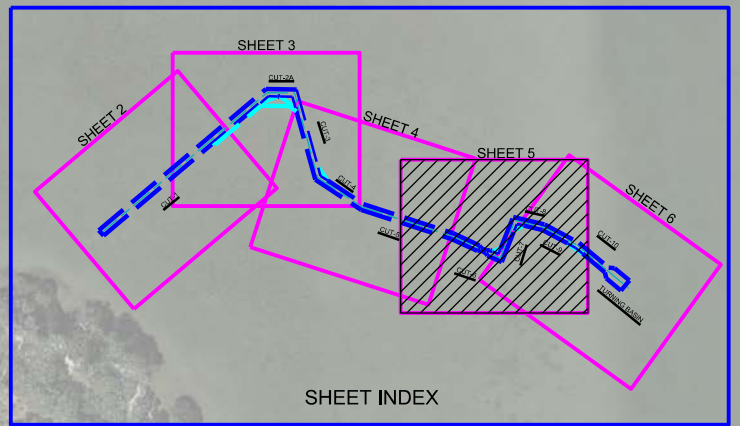
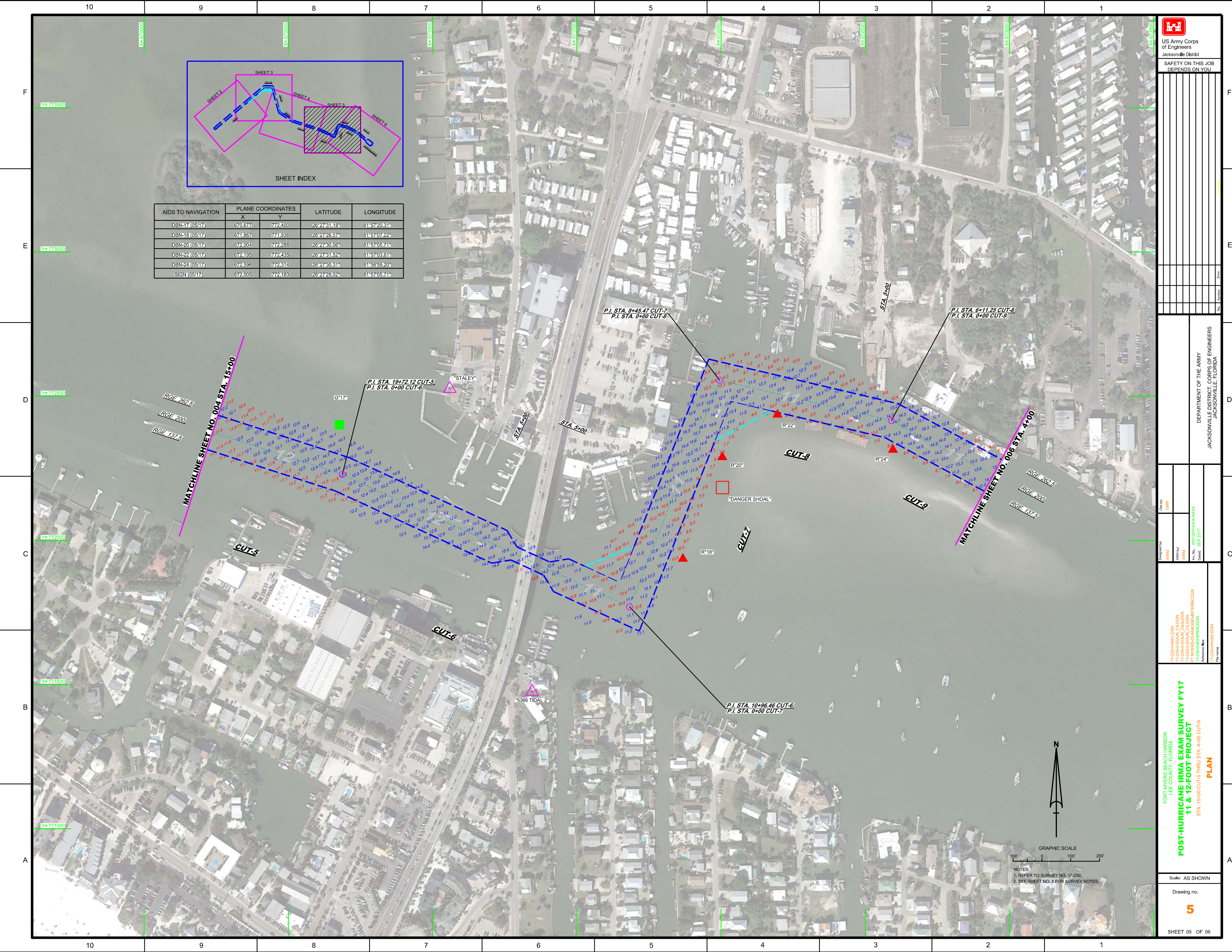
AIDS TO NAVIGATION	PLANE COORDINATES		LATITUDE	LONGITUDE
	X	Y		
DBN-13 (05/17)	667.954	773.749	26°27'44.55"	81°57'50.28"
LT-15 (05/17)	669.023	772.976	26°27'36.88"	81°57'38.52"

<p>US Army Corps of Engineers Jacksonville District SAFETY ON THIS JOB DEPENDS ON YOU</p>	
<p>DEPARTMENT OF THE ARMY JACKSONVILLE DISTRICT, CORPS OF ENGINEERS JACKSONVILLE, FLORIDA</p>	<p>Drawn by: <b>WRM</b> Checked: <b>SEP 2017</b></p>
<p>Project: <b>POST-HURRICANE IRMA EXAM SURVEY FY17</b> STA. 15+00 CUT-3 THRU STA. 15+00 CUT-5</p>	<p>Scale: AS SHOWN</p>
<p>Sheet: <b>4</b></p>	<p>Drawing no. <b>4</b></p>
<p>SHEET 04 OF 06</p>	



GRAPHIC SCALE  
100' 0 100' 200'

NOTES:  
1. REFER TO SURVEY NO. 17-230.  
2. SEE SHEET NO. 1 FOR SURVEY NOTES.



AIDS TO NAVIGATION	PLANE COORDINATES		LATITUDE	LONGITUDE
	X	Y		
DBN-17 (0517)	670.677	772.400	26°27'31.16"	81°57'20.31"
DBN-18 (0517)	674.867	774.936	26°27'26.57"	81°57'07.22"
DBN-20 (0517)	672.004	772.288	26°27'30.06"	81°57'05.74"
DBN-22 (0517)	672.195	772.435	26°27'31.52"	81°57'03.61"
DBN-24 (0517)	672.496	772.814	26°27'30.31"	81°56'59.20"
SIGN (0517)	672.005	772.183	26°27'29.02"	81°57'05.74"

**US Army Corps of Engineers**  
Jacksonville District

**SAFETY ON THIS JOB DEPENDS ON YOU**

---

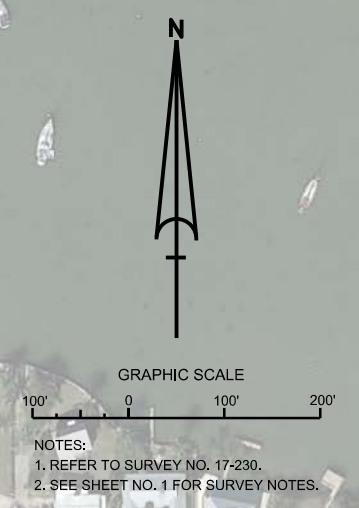
DEPARTMENT OF THE ARMY  
JACKSONVILLE DISTRICT, CORPS OF ENGINEERS  
JACKSONVILLE, FLORIDA

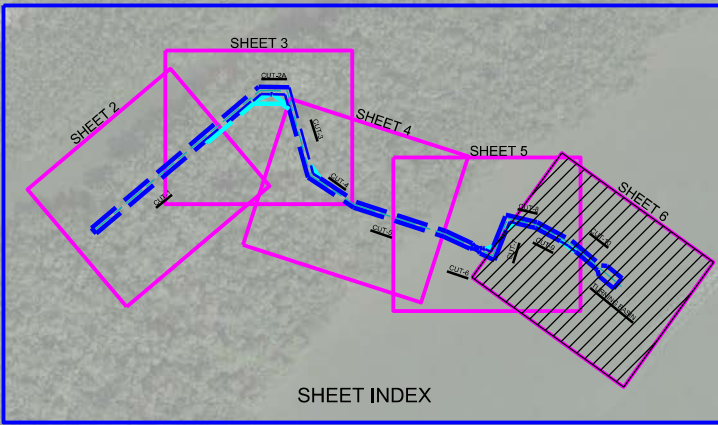
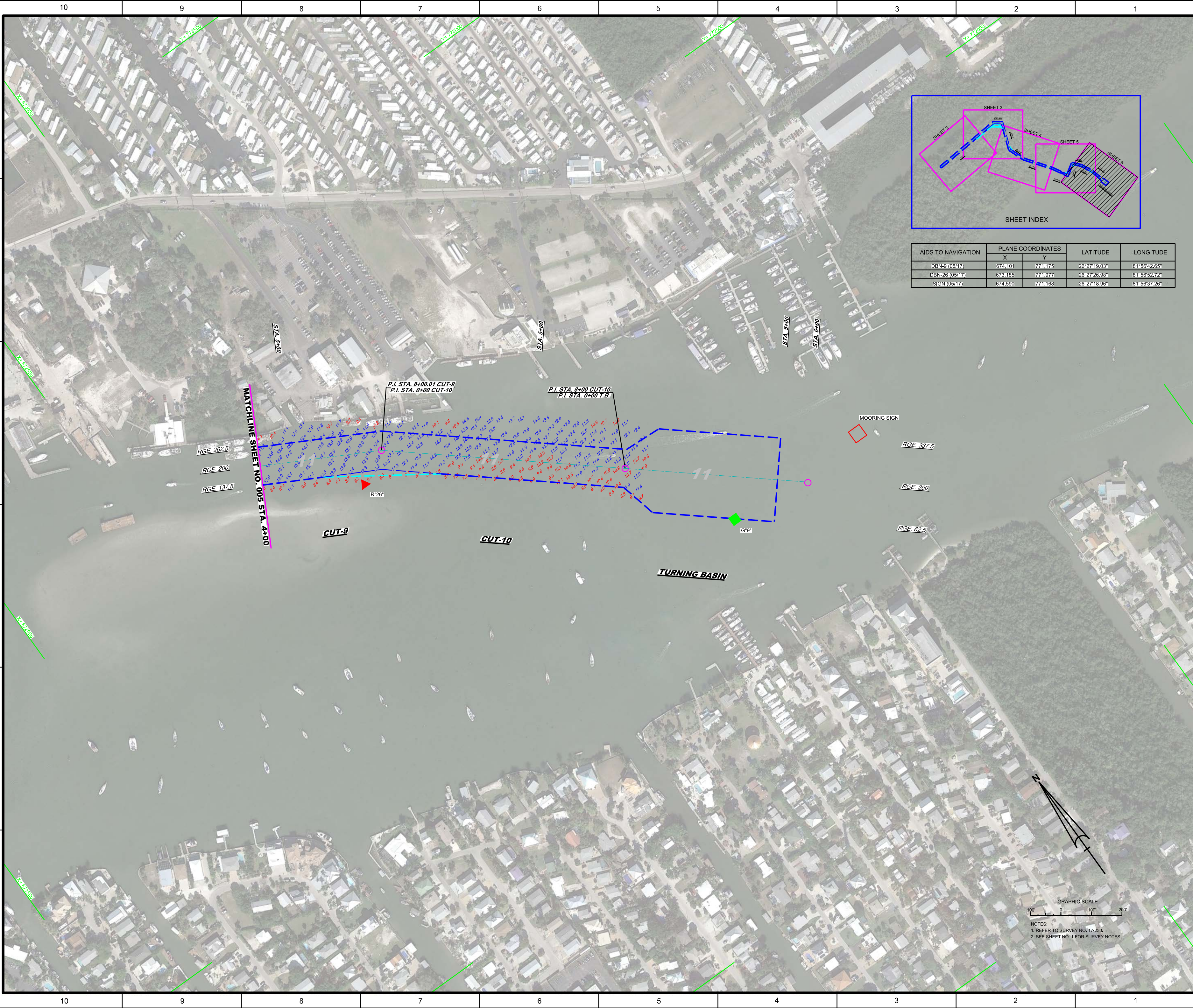
Drawn by: GHR  
Checked by: WRM  
Designed by: WRM  
Project No.: W1230A-HARBOR  
Date: SEP 2017

**POST-HURRICANE IRMA EXAM SURVEY FY17**  
**11 & 12-FOOT PROJECT**  
STA. 15+00 CUT-5 THRU STA. 4+00 CUT-9

**PLAN**

Scale: AS SHOWN  
Drawing no. **5**  
SHEET 05 OF 06





AIDS TO NAVIGATION	PLANE COORDINATES		LATITUDE	LONGITUDE
	X	Y		
DBN-9 (05/17)	674.101	774.175	26°27'19.03"	81°56'42.65"
DBN-26 (05/17)	673.185	774.977	26°27'26.99"	81°56'52.72"
SIGN (05/17)	674.590	774.168	26°27'18.96"	81°56'37.26"

MATCHLINE SHEET NO. 005 STA. 4+00

P.I. STA. 8+00.01 CUT-9  
P.I. STA. 0+00 CUT-10

P.I. STA. 8+00 CUT-10  
P.I. STA. 0+00 T.B.

**CUT-9**

**CUT-10**

**TURNING BASIN**

MOORING SIGN


RGE. 337.5

RGE. 200

RGE. 62.5

GRAPHIC SCALE  
100 0 100 200

NOTES:  
1. REFER TO SURVEY NO. 17-230.  
2. SEE SHEET NO. 1 FOR SURVEY NOTES.



US Army Corps of Engineers  
Jacksonville District  
SAFETY ON THIS JOB  
DEPENDS ON YOU

---

DEPARTMENT OF THE ARMY  
JACKSONVILLE DISTRICT, CORPS OF ENGINEERS  
JACKSONVILLE, FLORIDA

---

Drawn by: GHR  
Checked by: WRM  
Designed by: WRM  
File No.: 17-230-6-BS-IRMA-EXAM-PLAN  
Date: SEP 2017

---

XXXXXXXXXXXXXXXXXXXX  
17-230-6-BS-IRMA-EXAM-PLAN  
17-230-6-BS-IRMA-EXAM-PLAN  
17-230-6-BS-IRMA-EXAM-PLAN  
17-230-6-BS-IRMA-EXAM-PLAN  
Reference File:  
17-230-6-BS-IRMA-EXAM-PLAN

---

**POST-HURRICANE IRMA EXAM SURVEY FY17  
11 & 12-FOOT PROJECT**  
STA. 4+00 CUT-9 THRU STA 9+00 TURNING BASIN  
**PLAN**

---

Scale: AS SHOWN  
Drawing no.  
**6**

---

SHEET 06 OF 06