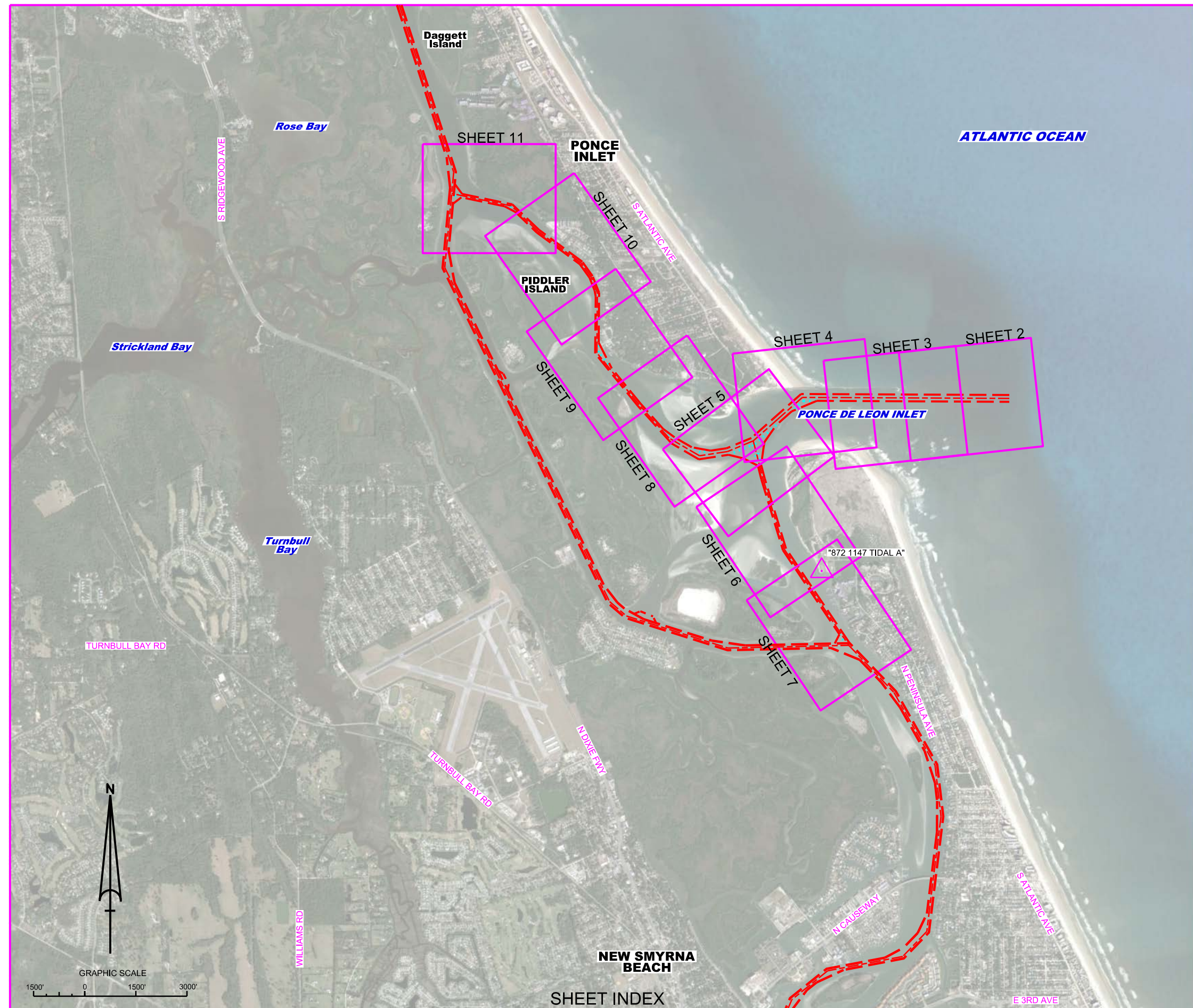
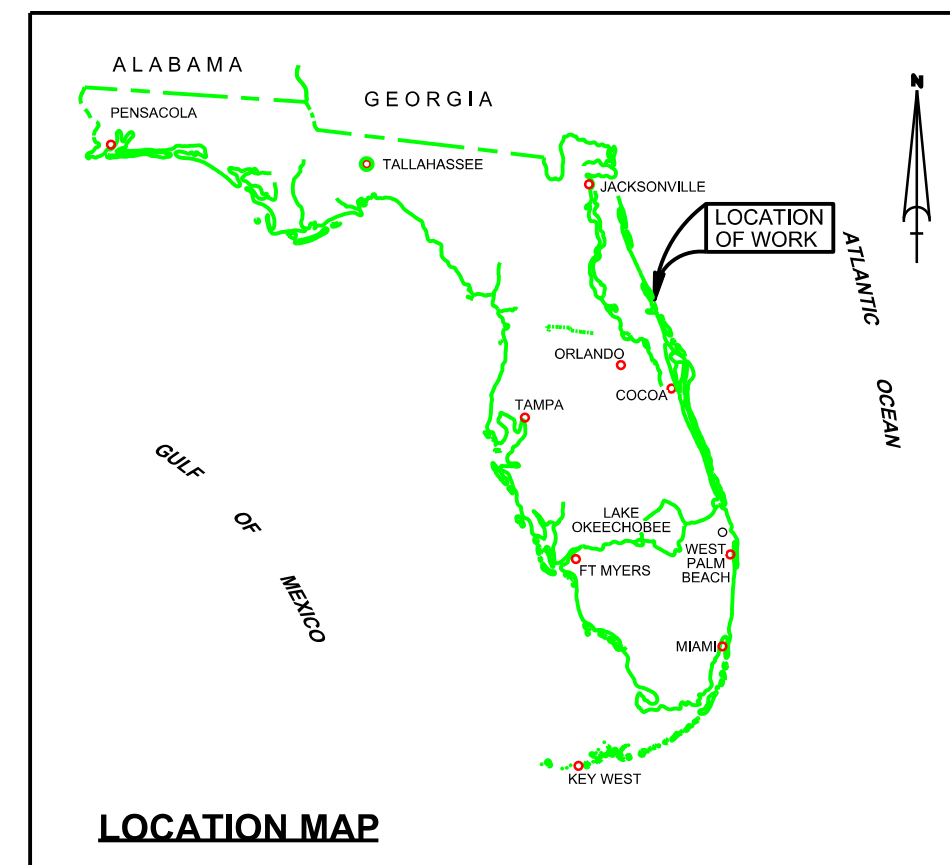


PONCE DE LEON INLET VOLUSIA COUNTY, FLORIDA POST-HURRICANE IRMA EXAMINATION SURVEY FY17 7, 12 AND 15-FOOT PROJECT



SURVEY NOTES

- REFER TO SURVEY NO. 17-226.
- TIDAL REDUCTIONS WERE OBTAINED UTILIZING A REAL-TIME KINEMATIC (RTK) GPS AND REFERENCED TO MLLW. KTD FILE NAME IS: "VOLUSIA-BREVARD (W-O_CANAVERALHBR_2016 05 06.KTD)".
- ALL ELEVATIONS ARE BELOW THE CHART DATUM UNLESS PRECEDED BY A (+) SIGN.
- PLANE COORDINATES ARE BASED ON THE TRANSVERSE MERCATOR PROJECTION FOR THE EAST ZONE OF FLORIDA AND REFERENCED TO NORTH AMERICAN DATUM OF 1983 (NAD83).
- ALL STATIONING REFERS TO THE CENTERLINE OF THE CHANNEL.
- THIS SURVEY WAS PERFORMED USING REAL-TIME KINEMATIC (RTK) GPS POSITIONING WITH THE FOLLOWING REFERENCE BASE LOCATION:
REFERENCE BASE LOCATED AT "872 1147 TIDAL A" (OPUS PID: DK6692)
TIDE STAFF LOCATED FROM "872 1147 TIDAL 1" (NGS PID: AQ1522)
- DEPTHS DEPICTED BY THIS SURVEY ARE REFERENCED TO MLLW, TIDAL EPOCH 1983-2001 AS REPORTED BY THE NATIONAL OCEANIC AND ATMOSPHERIC ADMINISTRATION (NOAA). NOAA'S VDATUM MODEL WAS USED AND CALIBRATED TO THE PUBLISHED MLLW HEIGHTS OF THE BENCHMARKS ASSOCIATED WITH THE TIDE GAGE SITES SPECIFIED BELOW:

NOAA TIDAL STATION 872-1147 TIDAL A (OPUS PID: DK6692) FOR ALL CUTS.

VERTICAL MEASUREMENTS WERE MADE USING A ROSS SMART SOUNDER MODEL 835 WITH A DUAL-FREQUENCY (28/200 KHZ) SINGLE-BEAM TRANSDUCER ALL SOUNDINGS SHOWN ARE IN HIGH FREQUENCY.

VESSEL	DATE OF SURVEY	CUT
SB-36	06 NOV 2017	2S, 3S
SB-36	07 NOV 2017	1S, 3N THRU 13N
SB-36	08 NOV 2017	1A, 2A, AND 3A
- AIDS TO NAVIGATION WERE LOCATED DURING THIS SURVEY.
- THE INFORMATION DEPICTED ON THIS MAP REPRESENTS THE RESULTS OF SURVEYS MADE ON THE DATES INDICATED ABOVE AND CAN ONLY BE CONSIDERED AS INDICATING THE GENERAL CONDITIONS AT THAT TIME. THIS CHART IS SOLELY FOR THE DISTRIBUTION OF AVAILABLE DEPTHS AT THE TIME OF THE SURVEY.
- SURVEY ACCURACY PERFORMANCE STANDARDS, QUALITY CONTROL, AND QUALITY ASSURANCE REQUIREMENTS WERE FOLLOWED DURING THIS SURVEY IN ACCORDANCE WITH USACE EM 1110-2-1003, HYDROGRAPHIC SURVEYING, 30 NOV. 2013.

LEGEND	
	MONUMENT
	LIGHTED BEACON
	GREEN DAYBEACON
	RED DAYBEACON
	RED LIGHTED BUOY
	GREEN LIGHTED BUOY
	CAN BUOY
	NUN BUOY
	TIDE STAFF
	PROJECT DEPTH

US Army Corps of Engineers
Jacksonville District
SAFETY ON THIS JOB
DEPENDS ON YOU

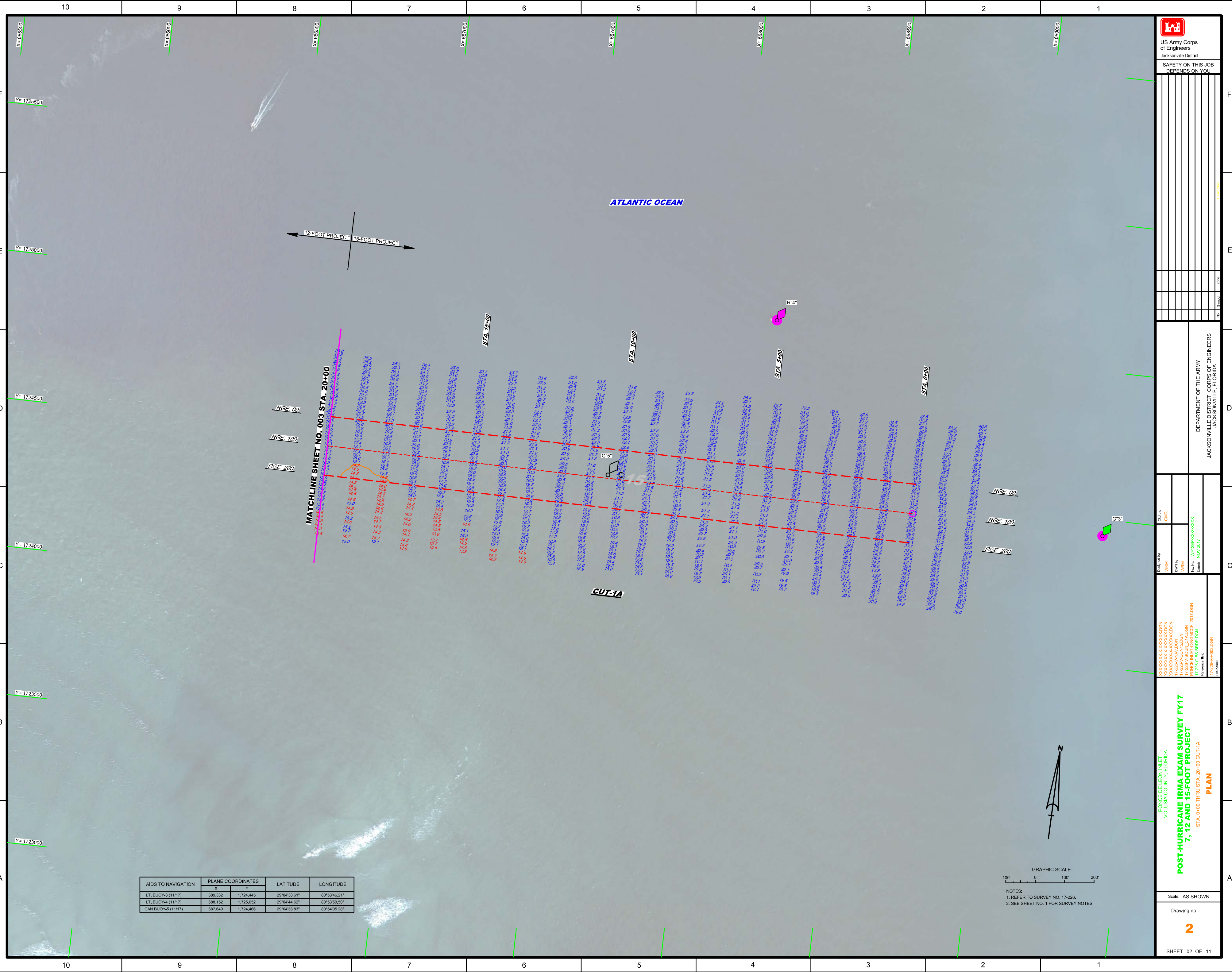
DEPARTMENT OF THE ARMY
JACKSONVILLE DISTRICT, CORPS OF ENGINEERS
JACKSONVILLE, FLORIDA

Check by: GHR
Designed by: WRM
Drawn by: WRM
File No: W12229A-H401.DGN
Date: NOV 2017

17-226A-H401.DGN
17-226A-H401.DGN
17-226A-H401.DGN
17-226A-H401.DGN

Scale: AS SHOWN
Drawing no. **1**
SHEET 01 OF 11

POST-HURRICANE IRMA EXAM SURVEY FY17
7, 12 AND 15-FOOT PROJECT
INDEX, LOCATION AND VICINITY
MAP



AIDS TO NAVIGATION	PLANE COORDINATES		LATITUDE	LONGITUDE
	X	Y		
LT. BUOY-3 (11/17)	689.332	1,724.445	29°04'38.61"	80°53'46.21"
LT. BUOY-4 (11/17)	688.152	1,725.052	29°04'44.62"	80°53'59.50"
CAN BUOY-5 (11/17)	687.640	1,724.466	29°04'38.83"	80°54'05.28"

GRAPHIC SCALE

 100' 0 100' 200'

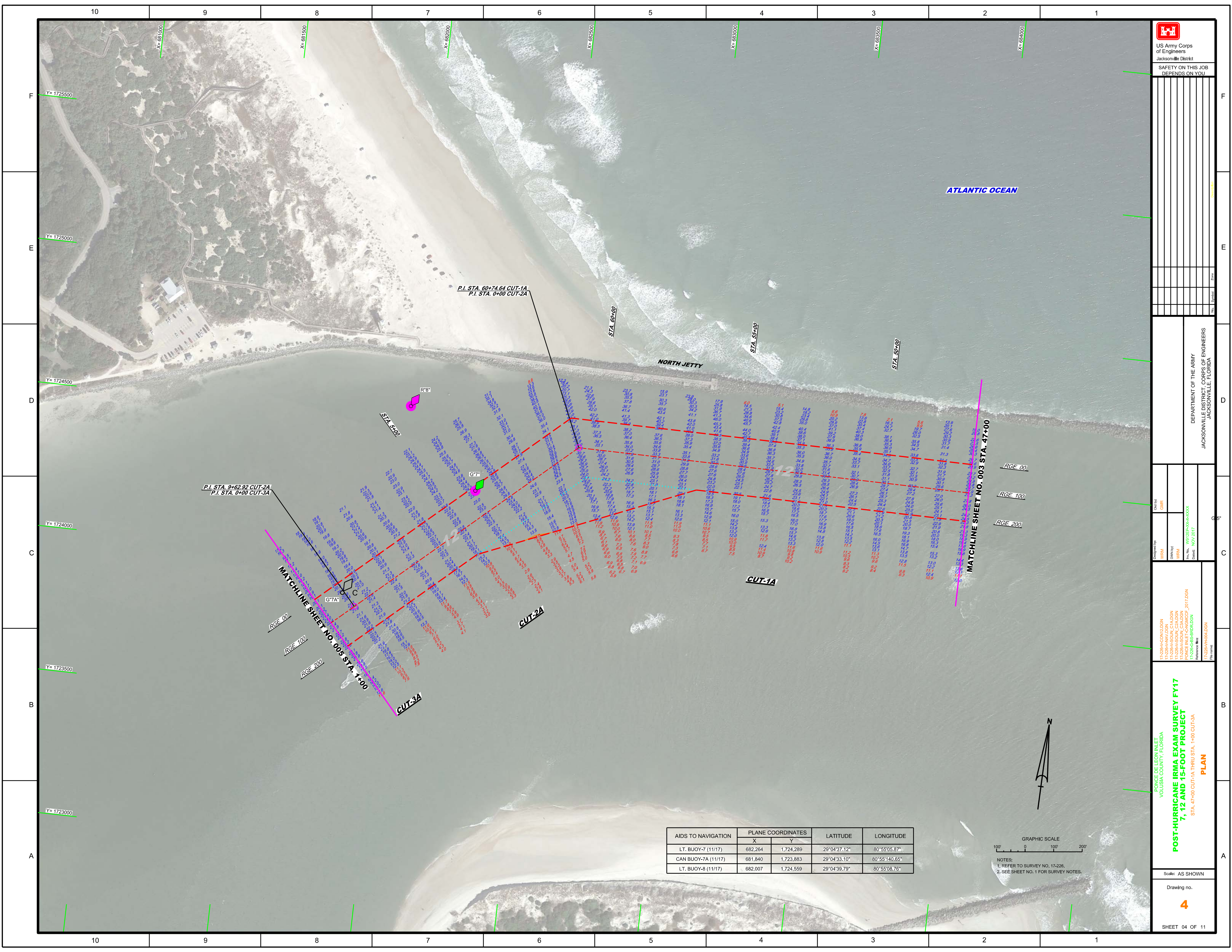
 NOTES:

 1. REFER TO SURVEY NO. 17-226.

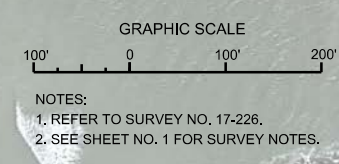
 2. SEE SHEET NO. 1 FOR SURVEY NOTES.



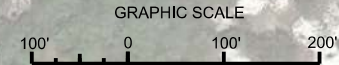
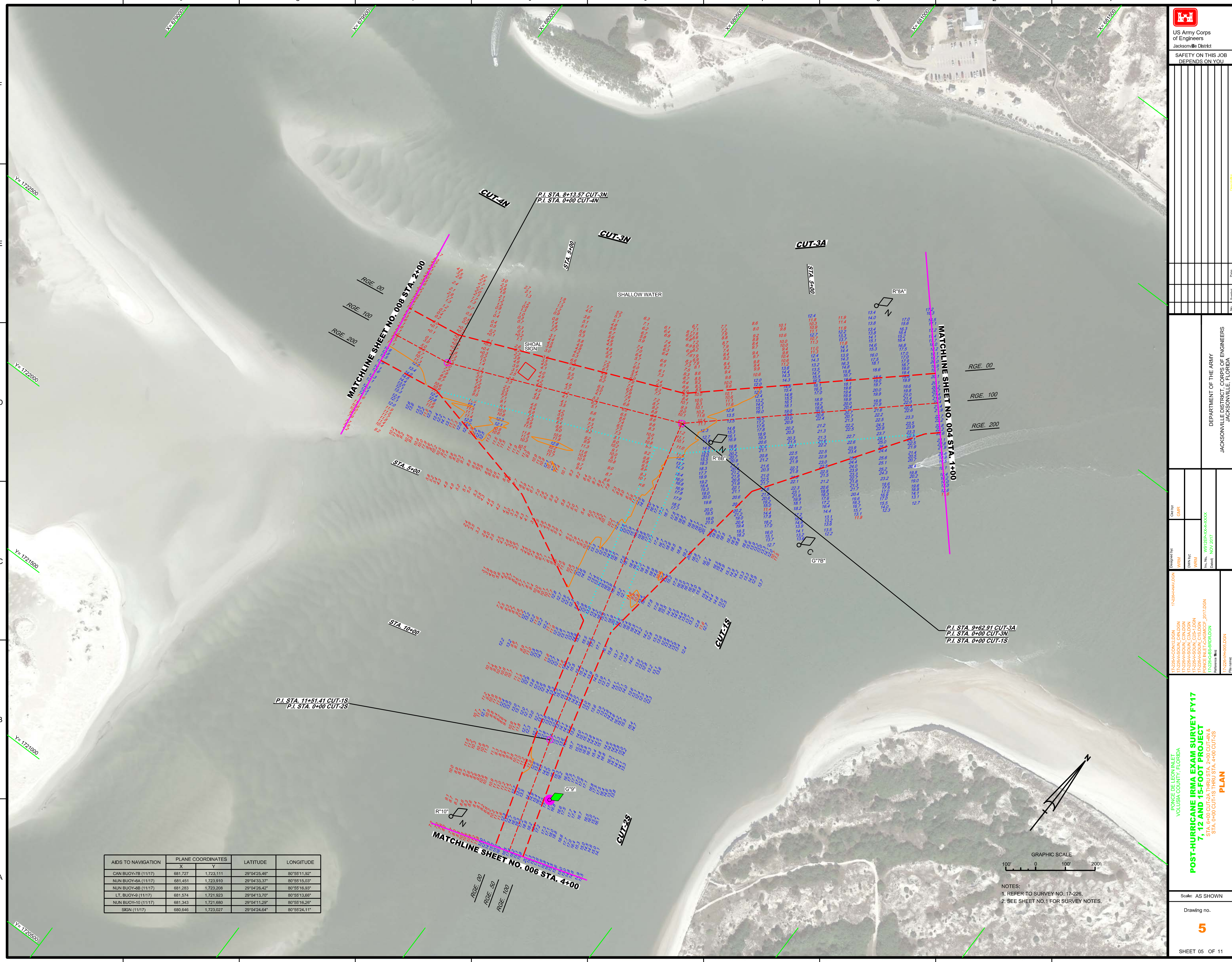
GRAPHIC SCALE
 0 100 200
 NOTES:
 1. REFER TO SURVEY NO. 17-228.
 2. SEE SHEET NO. 1 FOR SURVEY NOTES.



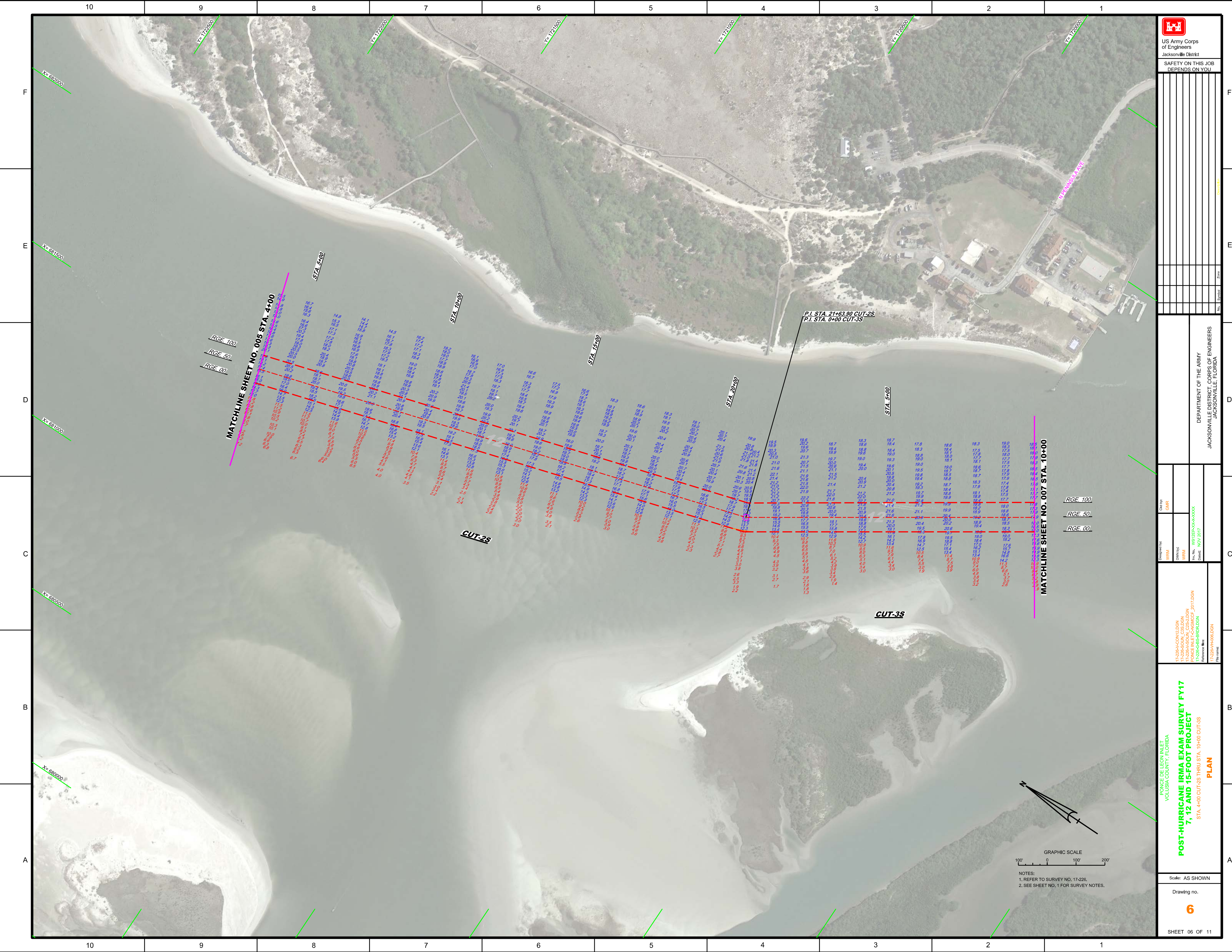
AIDS TO NAVIGATION	PLANE COORDINATES		LATITUDE	LONGITUDE
	X	Y		
LT. BUOY-7 (11/17)	682,264	1,724,289	29°04'37.12"	80°55'05.87"
CAN BUOY-7A (11/17)	681,840	1,723,883	29°04'33.10"	80°55'140.65"
LT. BUOY-8 (11/17)	682,007	1,724,559	29°04'39.79"	80°55'08.76"




AIDS TO NAVIGATION	PLANE COORDINATES		LATITUDE	LONGITUDE
	X	Y		
CAN BUOY-7B (11/17)	681,727	1,723,111	29°04'25.46"	80°55'11.92"
NUN BUOY-8A (11/17)	681,451	1,723,910	29°04'33.37"	80°55'15.03"
NUN BUOY-8B (11/17)	681,283	1,723,208	29°04'26.42"	80°55'16.93"
L.T. BUOY-9 (11/17)	681,574	1,721,923	29°04'13.70"	80°55'13.66"
NUN BUOY-10 (11/17)	681,343	1,721,680	29°04'11.29"	80°55'16.26"
SGN (11/17)	680,646	1,723,027	29°04'24.64"	80°55'24.11"



NOTES:
 1. REFER TO SURVEY NO. 17-228.
 2. SEE SHEET NO. 1 FOR SURVEY NOTES.





US Army Corps of Engineers
Jacksonville District

SAFETY ON THIS JOB DEPENDS ON YOU

Name	
Grade	
Signature	
Date	

DEPARTMENT OF THE ARMY
JACKSONVILLE DISTRICT, CORPS OF ENGINEERS
JACKSONVILLE, FLORIDA

Checked By: **GHR**

Designed By: **WRM**

Drawn By: **WRM**

File No.: **17-226-6-6B-000A**

Date: **NOV 2017**

17-226-6-CON12.DGN
17-226-6-SUB-CON12.DGN
17-226-6-SUB-CON13.DGN
17-226-6-SUB-CON14.DGN

POST-HURRICANE IRMA EXAM SURVEY FY17
7, 12 AND 15-FOOT PROJECT
 STA. 4+00 CUT-2S THRU STA. 10+00 CUT-3S
PLAN

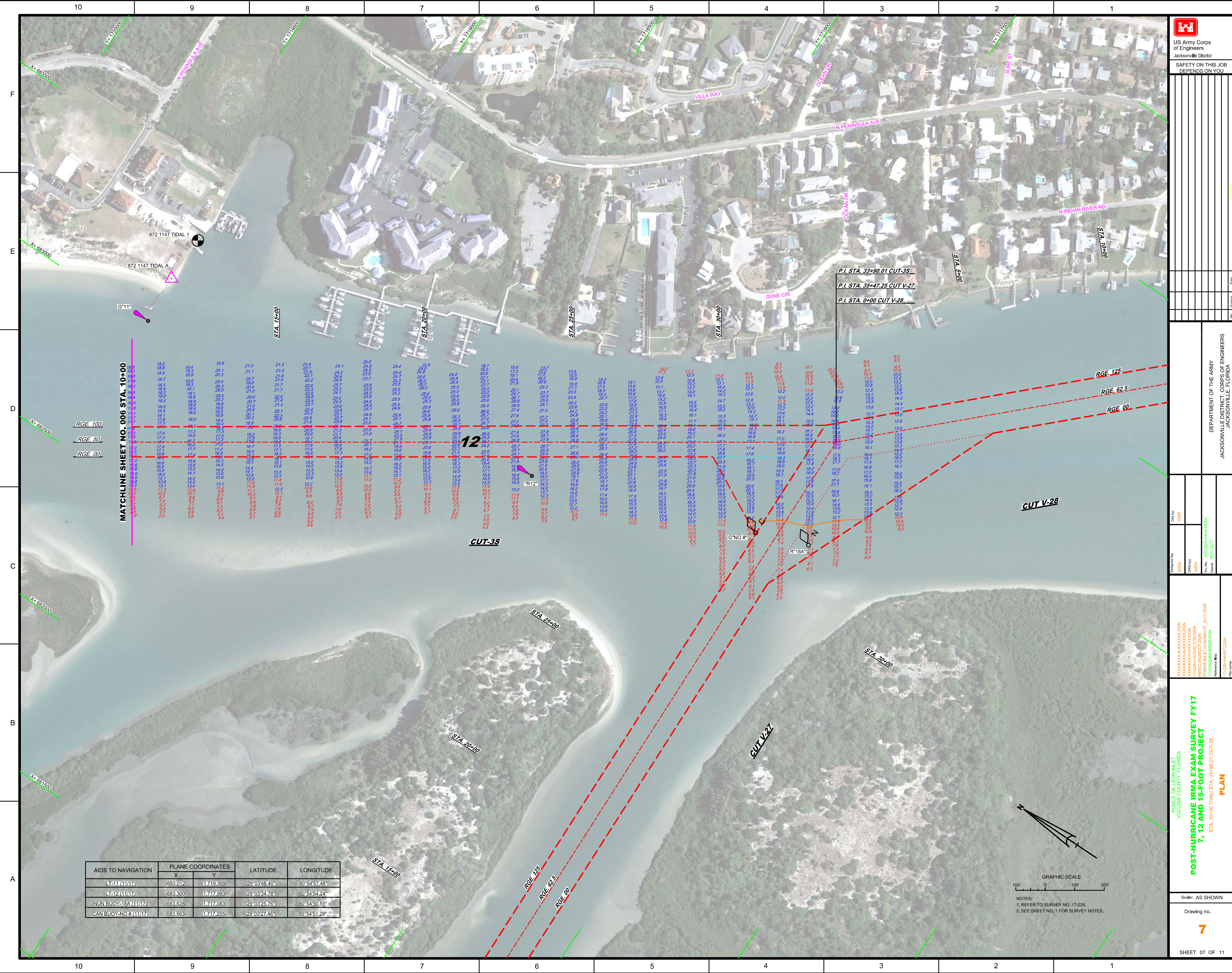
Scale: AS SHOWN

Drawing no. **6**

SHEET 06 OF 11

GRAPHIC SCALE
100' 0 100' 200'

NOTES:
1. REFER TO SURVEY NO. 17-226.
2. SEE SHEET NO. 1 FOR SURVEY NOTES.



US Army Corps of Engineers
Jacksonville District
SAFETY ON THIS JOB
DEPENDS ON YOU

Sheet No.	Description	Date

DEPARTMENT OF THE ARMY
JACKSONVILLE DISTRICT, CORPS OF ENGINEERS
JACKSONVILLE, FLORIDA

Designed By: WRM
Drawn By: WRM
Reviewed By: WRM
Checked: NOV 2017

Plan No.: WR226A-H07-DGN
Project Name: PONCE INLET CANAL, 2017 DGN
Scale: AS SHOWN

**POST-HURRICANE IRMA EXAM SURVEY FY17
7, 12 AND 15-FOOT PROJECT**

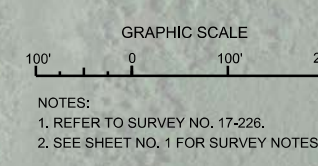
STA. 10+00 THRU STA. 39+00.01 CUT-3S
PLAN

Scale: AS SHOWN

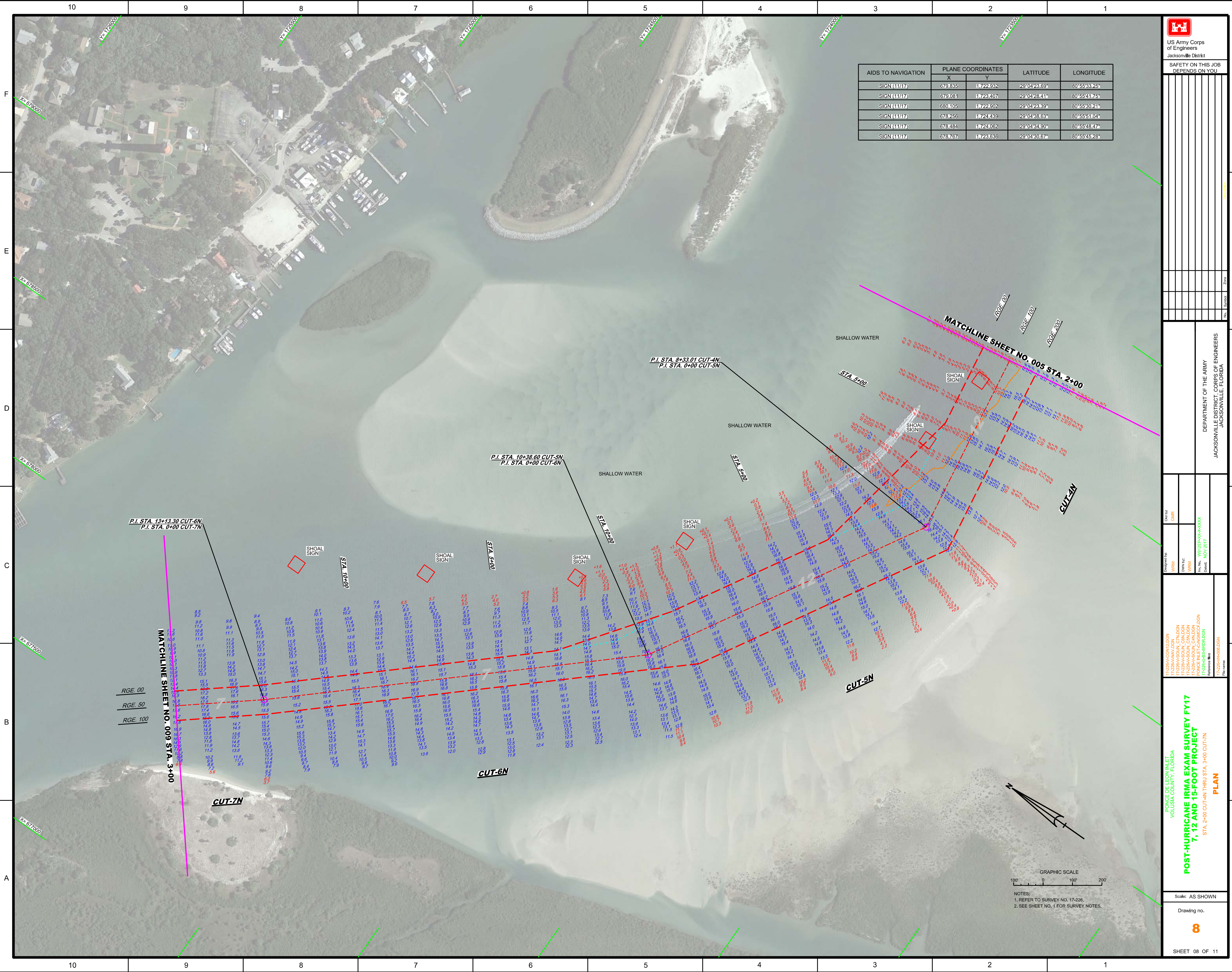
Drawing no. **7**

SHEET 07 OF 11


AIDS TO NAVIGATION	PLANE COORDINATES		LATITUDE	LONGITUDE
	X	Y		
LT-11 (11/17)	683.012	1719.369	29°03'48.40"	80°54'57.48"
LT-12 (11/17)	683.300	1717.993	29°03'44.78"	80°54'54.24"
NUN BUOY-18A (11/17)	683.628	1717.083	29°03'26.76"	80°54'50.55"
CAN BUOY-NO # (11/17)	683.563	1717.255	29°03'27.46"	80°54'51.28"



NOTES:
1. REFER TO SURVEY NO. 17-226.
2. SEE SHEET NO. 1 FOR SURVEY NOTES.



AIDS TO NAVIGATION	PLANE COORDINATES		LATITUDE	LONGITUDE
	X	Y		
SIGN (11/17)	679.885	17223.632	29°04'23.69"	80°55'33.25"
SIGN (11/17)	679.081	17233.407	29°04'28.41"	80°55'41.75"
SIGN (11/17)	680.105	17223.902	29°04'23.39"	80°55'30.21"
SIGN (11/17)	678.256	17242.439	29°04'38.65"	80°55'51.04"
SIGN (11/17)	678.484	17241.062	29°04'34.90"	80°55'48.47"
SIGN (11/17)	678.767	17233.635	29°04'30.67"	80°55'45.28"



US Army Corps of Engineers
Jacksonville District

SAFETY ON THIS JOB DEPENDS ON YOU

DEPARTMENT OF THE ARMY
JACKSONVILLE DISTRICT, CORPS OF ENGINEERS
JACKSONVILLE, FLORIDA

Checked By: GHR
Designed By: WRM
Drawn By: WRM
File No: W17226-000-000-000
Date: NOV 2017

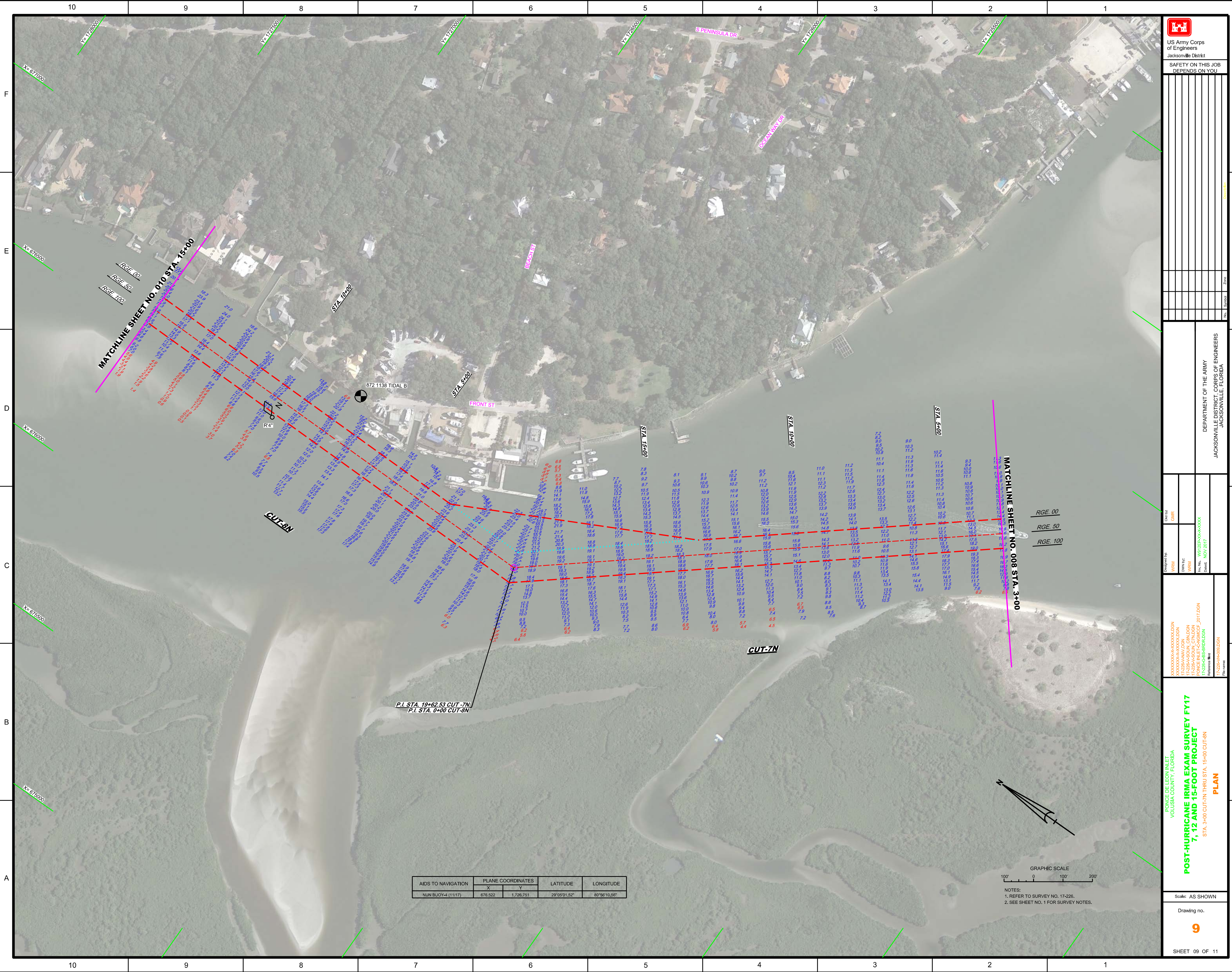
17-226-000-012.DGN
17-226-000-011.DGN
17-226-000-010.DGN
17-226-000-009.DGN
17-226-000-008.DGN
17-226-000-007.DGN
17-226-000-006.DGN
17-226-000-005.DGN
17-226-000-004.DGN
17-226-000-003.DGN
17-226-000-002.DGN
17-226-000-001.DGN


POST-HURRICANE IRMA EXAM SURVEY FY17
7, 12 AND 15-FOOT PROJECT
STA. 2+00 CUT-4N THRU STA. 3+00 CUT-7N
PLAN

Scale: AS SHOWN
Drawing no. **8**
SHEET 08 OF 11

GRAPHIC SCALE
100' 0 100' 200'

NOTES:
1. REFER TO SURVEY NO. 17-226.
2. SEE SHEET NO. 1 FOR SURVEY NOTES.





US Army Corps
of Engineers
Jacksonville District

**SAFETY ON THIS JOB
DEPENDS ON YOU**

DEPARTMENT OF THE ARMY
JACKSONVILLE DISTRICT, CORPS OF ENGINEERS
JACKSONVILLE, FLORIDA

Drawn by: GHR
Checked by: WRM
Designed by: WRM

File No: W17226-65-000-0000
Date: NOV 2017

XXXXXXXXXXXXXXXXXXXX
W17226-65-000-0000
W17226-65-000-0000
W17226-65-000-0000
W17226-65-000-0000
W17226-65-000-0000

**POST-HURRICANE IRMA EXAM SURVEY FY17
7, 12 AND 15-FOOT PROJECT**

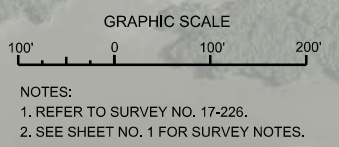
STA. 3+00 CUT-7N THRU STA. 15+00 CUT-8N
PLAN

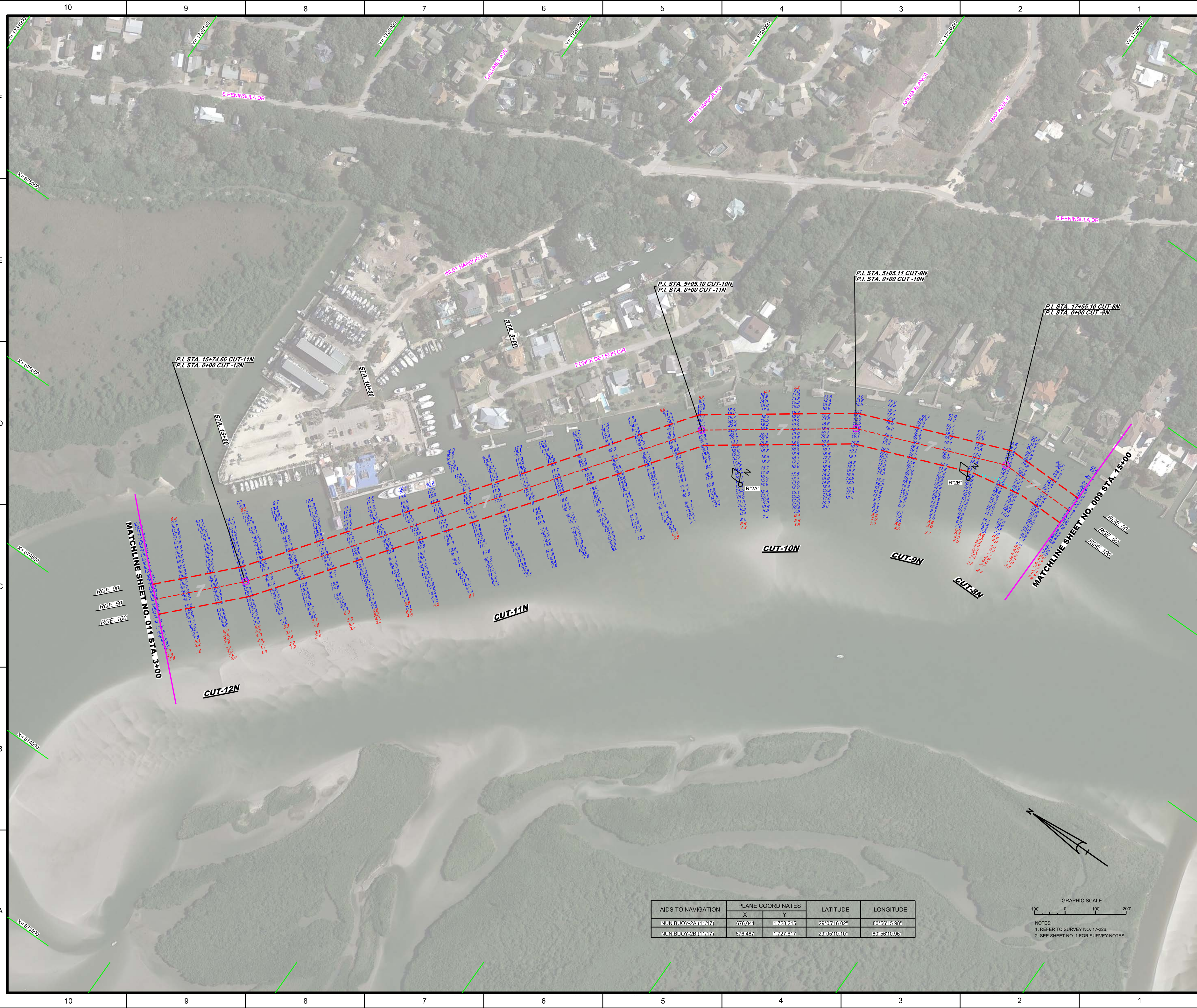
Scale: AS SHOWN

Drawing no.
9

SHEET 09 OF 11

AIDS TO NAVIGATION	PLANE COORDINATES		LATITUDE	LONGITUDE
	X	Y		
NUN BUOY-4 (11/17)	676.522	1,726.751	29°05'01.52"	80°56'10.66"





AIDS TO NAVIGATION	PLANE COORDINATES		LATITUDE	LONGITUDE
	X	Y		
NUN BUOY 2A (11/17)	676.041	11728.215	29°09'16.02"	80°56'15.98"
NUN BUOY 2B (11/17)	676.487	11727.617	29°05'10.10"	80°56'10.96"

GRAPHIC SCALE

 100' 0 100' 200'

 NOTES:

 1. REFER TO SURVEY NO. 17-226.

 2. SEE SHEET NO. 1 FOR SURVEY NOTES.



US Army Corps of Engineers
Jacksonville District

SAFETY ON THIS JOB
DEPENDS ON YOU

DEPARTMENT OF THE ARMY
JACKSONVILLE DISTRICT, CORPS OF ENGINEERS
JACKSONVILLE, FLORIDA

Drawn by: GHR
Checked by: GHR
Date: NOV 2017

XXXXXXXXXXXXXXXXXXXX.DGN
F:\2284\CON\7.DGN
F:\2284\CON\G13N.DGN
F:\2284\CON\G12N.DGN
F:\2284\CON\G11N.DGN
F:\2284\CON\G10N.DGN
F:\2284\CON\G09N.DGN
F:\2284\CON\G08N.DGN
F:\2284\CON\G07N.DGN
F:\2284\CON\G06N.DGN
F:\2284\CON\G05N.DGN
F:\2284\CON\G04N.DGN
F:\2284\CON\G03N.DGN
F:\2284\CON\G02N.DGN
F:\2284\CON\G01N.DGN

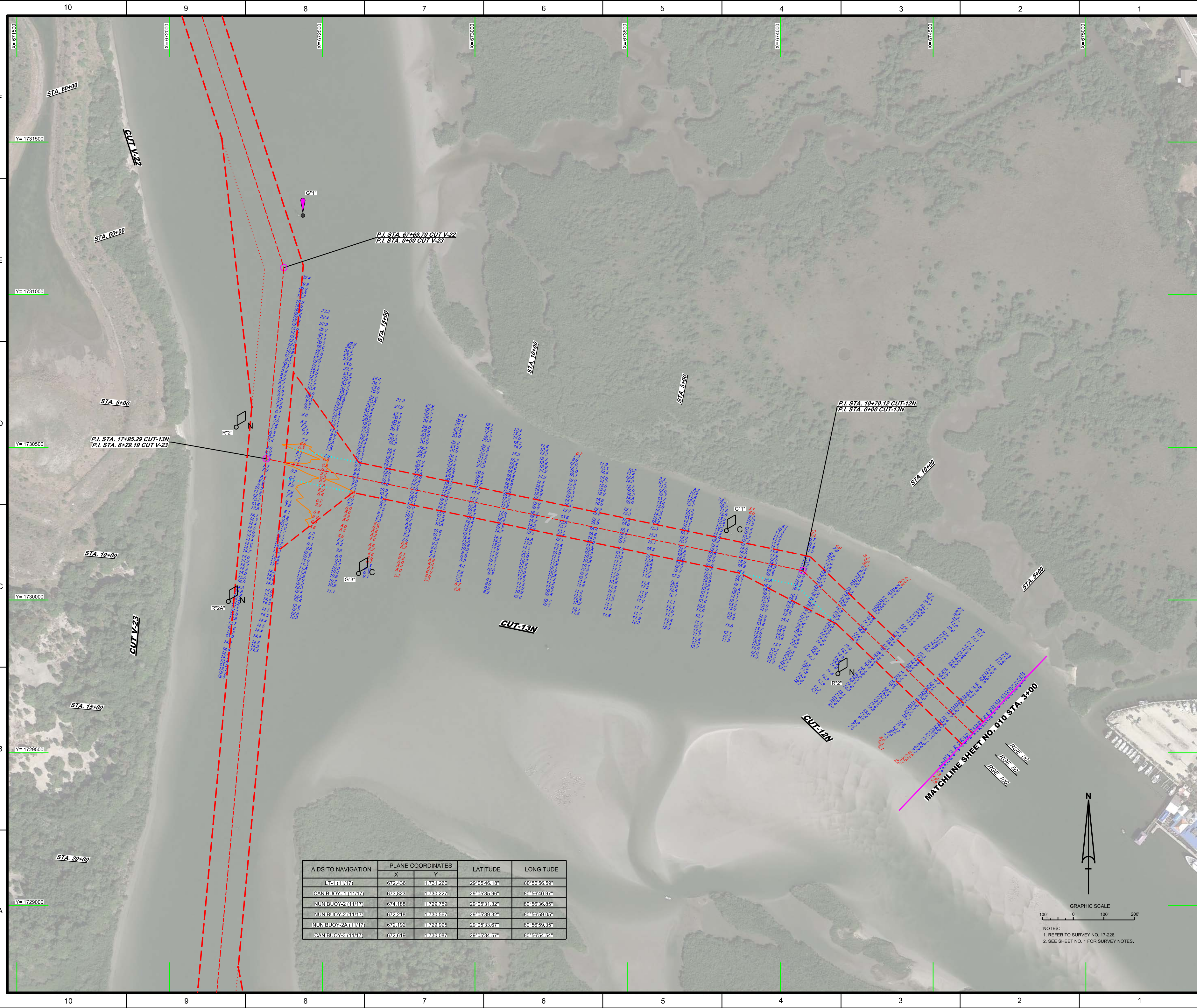
**POST-HURRICANE IRMA EXAM SURVEY FY17
7, 12 AND 15-FOOT PROJECT**
PLAN
STA. 3+00 CUT-12N THRU STA. 17+95.29 CUT-13N

Scale: AS SHOWN

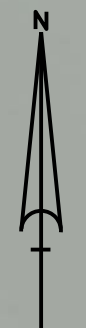
Drawing no.

11

SHEET 11 OF 11



AIDS TO NAVIGATION	PLANE COORDINATES		LATITUDE	LONGITUDE
	X	Y		
LET (11/17)	672.436	1731.260	29°05'46.13"	80°56'56.59"
CAN BUOY-1 (11/17)	673.923	1730.227	29°05'35.96"	80°56'40.97"
NUN BUOY-2 (11/17)	674.188	1729.759	29°05'31.32"	80°56'36.85"
NUN BUOY-2A (11/17)	672.218	1730.537	29°05'39.92"	80°56'59.05"
NUN BUOY-2A (11/17)	672.192	1729.995	29°05'33.67"	80°56'59.35"
CAN BUOY-3 (11/17)	672.619	1730.097	29°05'34.57"	80°56'54.54"



NOTES:
1. REFER TO SURVEY NO. 17-226.
2. SEE SHEET NO. 1 FOR SURVEY NOTES.