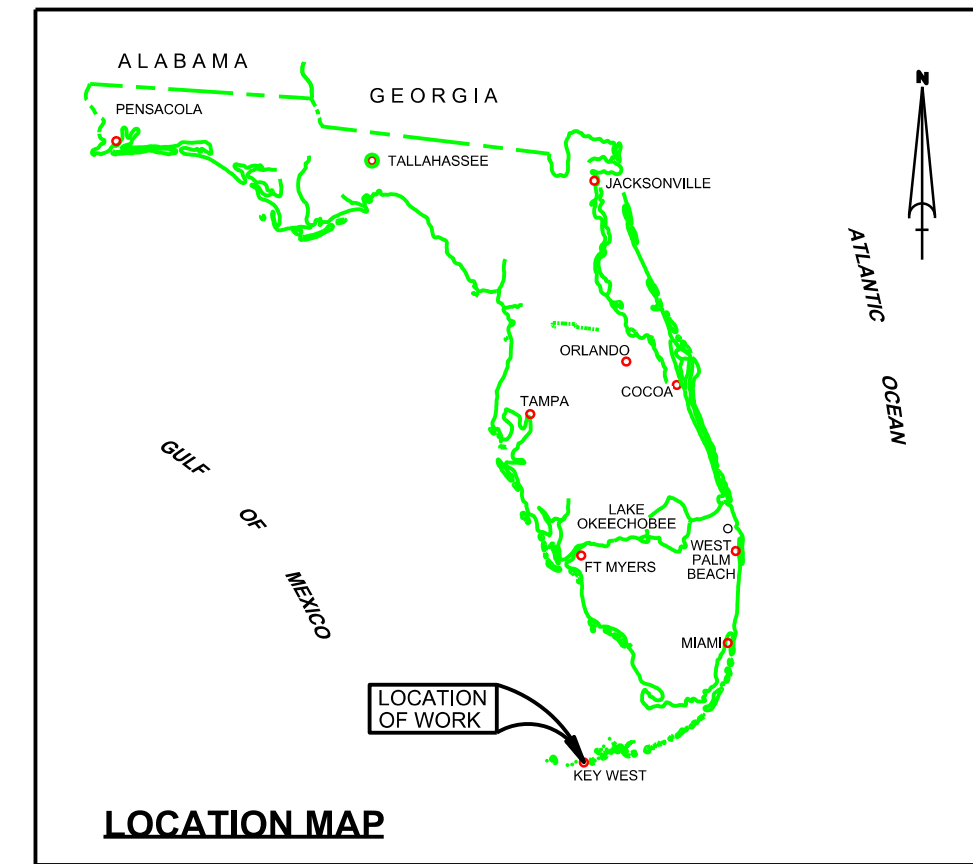
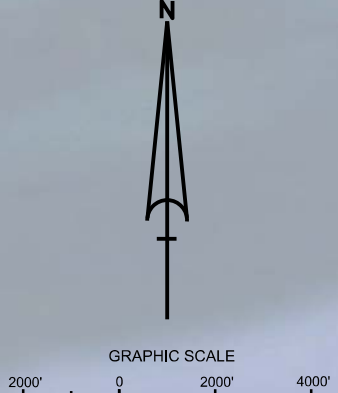


SHEET INDEX



KEY WEST HARBOR MONROE COUNTY, FLORIDA POST-HURRICANE IRMA EXAMINATION SURVEY FY17 8, 12, 26, 30 AND 34-FOOT PROJECT

SURVEY NOTES

- REFER TO SURVEY NO. 17-222.
 - ELEVATIONS ARE IN FEET AND TENTHS AND REFER TO MEAN LOWER LOW WATER (MLLW) TIDAL DATUM.
 - TIDAL REDUCTIONS WERE OBTAINED UTILIZING REAL-TIME KINEMATIC (RTK) GPS AND REFERENCED TO MLLW UTILIZING A HYPACK KINEMATIC TIDE DATUM (KTD) MODEL. KTD FILE NAME IS: "KEYWEST_07JAN2011.KTD".
 - ALL ELEVATIONS ARE BELOW THE CHART DATUM UNLESS PRECEDED BY A (+) SIGN.
 - PLANE COORDINATES ARE BASED ON THE TRANSVERSE MERCATOR PROJECTION FOR THE EAST ZONE OF FLORIDA AND REFERENCED TO NORTH AMERICAN DATUM OF 1983 (NAD83).
 - ALL STATIONING REFERS TO THE CENTERLINE OF THE CHANNEL.
 - DEPTHS DEPICTED BY THIS SURVEY ARE REFERENCED TO MLLW, TIDAL EPOCH 1983-2001 AS REPORTED BY THE NATIONAL OCEANIC AND ATMOSPHERIC ADMINISTRATION (NOAA). NOAA'S VDATUM MODEL WAS USED AND CALIBRATED TO THE PUBLISHED MLLW HEIGHTS OF THE BENCHMARKS ASSOCIATED WITH THE TIDE GAGE SITE SPECIFIED BELOW:
NOAA TIDAL STATION 872-4580, KEY WEST, FLORIDA
 - THIS SURVEY WAS PERFORMED USING REAL-TIME KINEMATIC (RTK) GPS POSITIONING WITH THE FOLLOWING REFERENCE BASE LOCATION:
REFERENCE BASE LOCATED AT "KH-04" (PID: BBCE03)
TIDE STAFF LOCATED FROM "KH-08" (PID: AA1753)
 - VERTICAL MEASUREMENTS WERE MADE USING A R2SONIC 2024 MULTI-BEAM SYSTEM OPERATING AT 240 KHZ AND A ROSS 835 SMARTSOUNDER OPERATING AT 28/200 KHZ. SOUNDINGS SHOWN ARE IN HIGH FREQUENCY.
- | VESSEL | DATE OF SURVEY | CUT |
|---------------|----------------|---|
| SV-FLORIDA II | 22 SEP 2017 | MAIN SHIPPING CHANNEL, CUT-A |
| SV-FLORIDA II | 23 SEP 2017 | CUT-B, CUT-C |
| SV-FLORIDA II | 24 SEP 2017 | TRUMAN HARBOR, USCG BERTHS, KEY WEST BIGHT CUTS |
| SV-FLORIDA II | 25 SEP 2017 | TURNING BASIN, KWB AND MOW CUTS |
| SV-FLORIDA II | 26 SEP 2017 | GARRISON BIGHT CUTS, AMMO DOCK |
- AIDS TO NAVIGATION WERE LOCATED DURING THIS SURVEY.
 - THE INFORMATION DEPICTED ON THIS MAP REPRESENTS THE RESULTS OF SURVEYS MADE ON THE DATES INDICATED ABOVE AND CAN ONLY BE CONSIDERED AS INDICATING THE GENERAL CONDITIONS AT THAT TIME. THIS CHART IS SOLELY FOR THE DISTRIBUTION OF AVAILABLE DEPTHS AT THE TIME OF THE SURVEY.
 - SURVEY ACCURACY PERFORMANCE STANDARDS, QUALITY CONTROL, AND QUALITY ASSURANCE REQUIREMENTS WERE FOLLOWED DURING THIS SURVEY IN ACCORDANCE WITH USACE EM 1110-2-1003, HYDROGRAPHIC SURVEYING, 30 NOV 13 AND EM 1110-2-6056, STANDARDS AND PROCEDURES FOR REFERENCING PROJECT ELEVATION GRADES TO NATIONWIDE VERTICAL DATUMS, 30 NOV 13.

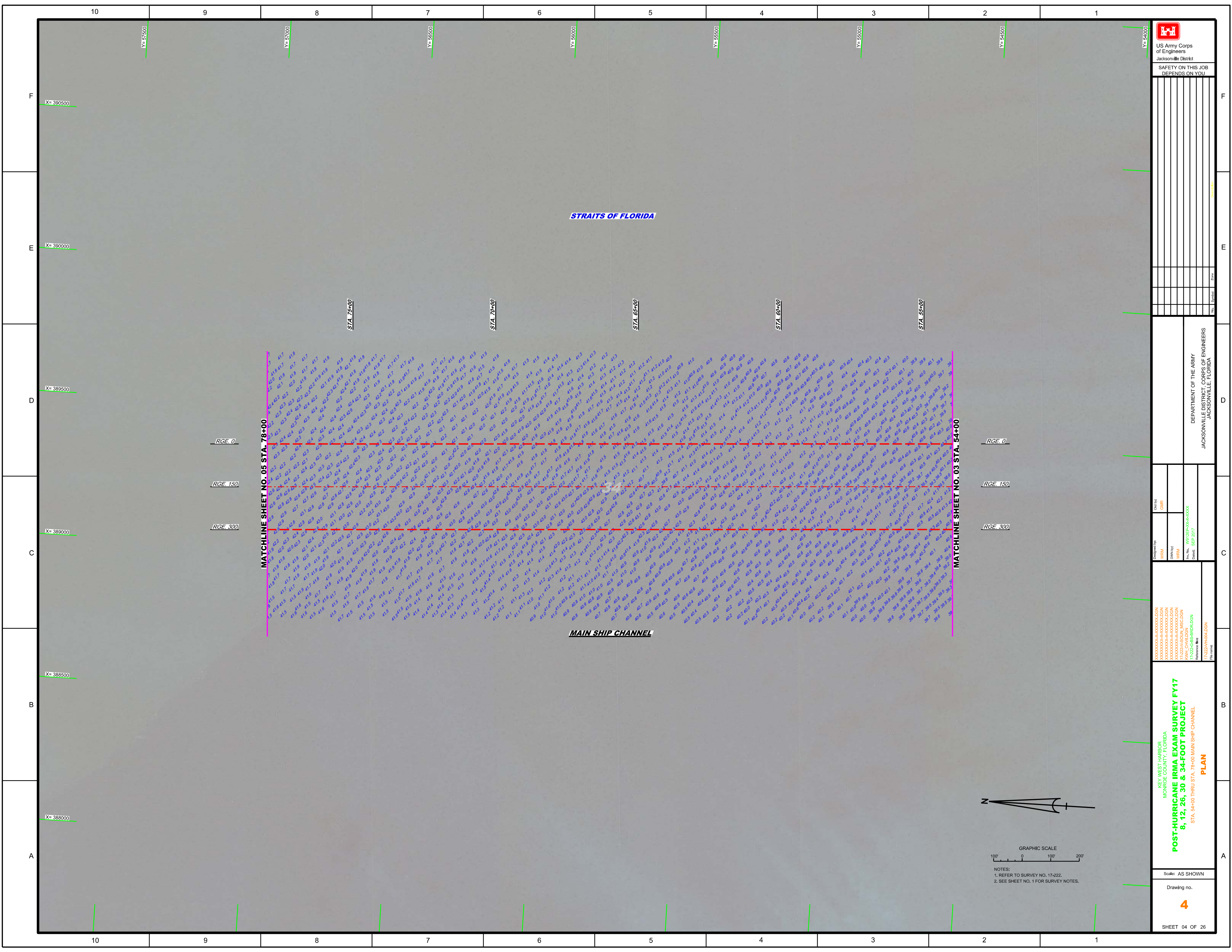
LEGEND	
	BENCHMARK
	LIGHTED BEACON
	GREEN DAYBEACON
	RED DAYBEACON
	RED LIGHTED BUOY
	GREEN LIGHTED BUOY
	CAN BUOY
	NUN BUOY
	TIDE STAFF
	PROJECT DEPTH


US Army Corps of Engineers
Jacksonville District
SAFETY ON THIS JOB
DEPENDS ON YOU

DEPARTMENT OF THE ARMY
JACKSONVILLE DISTRICT, CORPS OF ENGINEERS
JACKSONVILLE, FLORIDA

KEY WEST HARBOR
MONROE COUNTY, FLORIDA
POST-HURRICANE IRMA EXAM SURVEY FY17
8, 12, 26, 30 & 34-FOOT PROJECT
INDEX, LOCATION AND VICINITY
MAP

Scale: AS SHOWN
Drawing no. 1
SHEET 01 OF 26





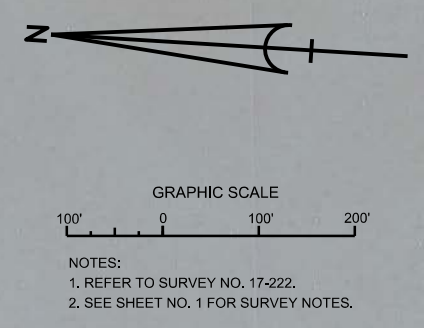
 US Army Corps of Engineers
 Jacksonville District
 SAFETY ON THIS JOB
 DEPENDS ON YOU

DEPARTMENT OF THE ARMY
 JACKSONVILLE DISTRICT, CORPS OF ENGINEERS
 JACKSONVILLE, FLORIDA

Drawn by: WRM
 Checked by: GHR
 Date: SEP 2017

KEY WEST HARBOR
 MONROE COUNTY, FLORIDA
POST-HURRICANE IRMA EXAM SURVEY FY17
8, 12, 26, 30 & 34-FOOT PROJECT
 STA. 54+00 THRU STA. 78+00 MAIN SHIP CHANNEL
PLAN

Scale: AS SHOWN
 Drawing no.
4
 SHEET 04 OF 26



NOTES:
 1. REFER TO SURVEY NO. 17-222.
 2. SEE SHEET NO. 1 FOR SURVEY NOTES.

