

FT. PIERCE HARBOR ST. LUCIE COUNTY, FLORIDA POST-HURRICANE IRMA EXAMINATION SURVEY FY17 28 & 30-FOOT PROJECT

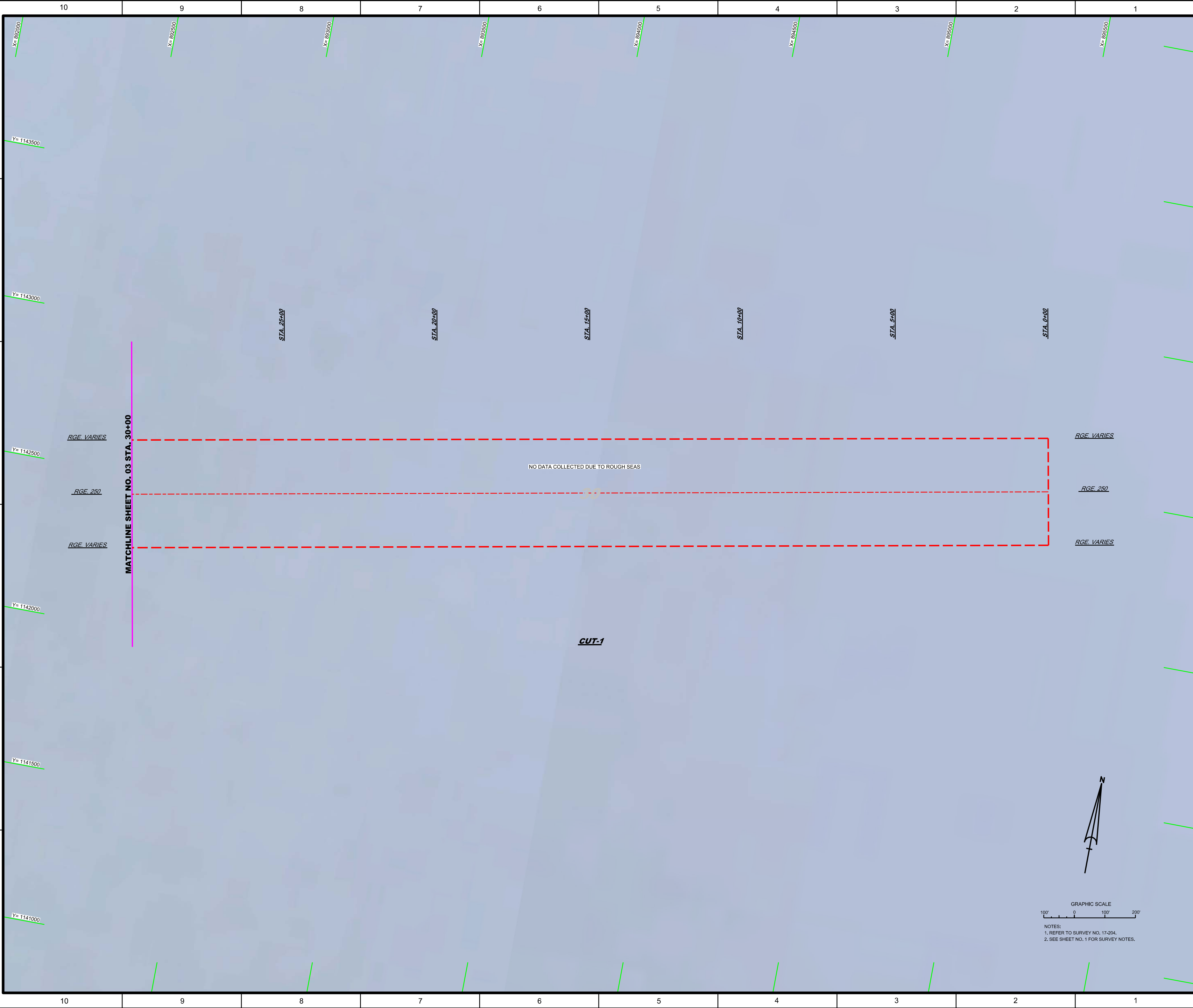
SURVEY NOTES

- REFER TO SURVEY NO. 17-204.
- SOUNDINGS ARE IN FEET AND TENTHS AND REFER TO NOAA'S REPORTED MEAN LOWER LOW WATER (MLLW) OF THE 1983-2001 TIDAL EPOCH.
- TIDAL REDUCTIONS WERE OBTAINED UTILIZING A REAL-TIME KINEMATIC (RTK) GPS AND REFERENCED TO MLLW UTILIZING A HYPACK KINEMATIC TIDE DATUM (KTD) MODEL. KTD FILE NAME IS: "INDIANRIVER-STLUCIE-MARTIN_20140527.KTD".
- ALL ELEVATIONS ARE BELOW THE CHART DATUM UNLESS PRECEDED BY A (+) SIGN.
- PLANE COORDINATES ARE BASED ON THE TRANSVERSE MERCATOR PROJECTION FOR THE EAST ZONE OF FLORIDA AND REFERENCED TO NORTH AMERICAN DATUM OF 1983 (NAD83).
- ALL STATIONING REFERS TO THE CENTERLINE OF THE CHANNEL.
- THIS SURVEY WAS PERFORMED USING REAL-TIME KINEMATIC (RTK) GPS POSITIONING WITH THE FOLLOWING REFERENCE BASE LOCATIONS:
REFERENCE BASE LOCATED AT "872 2213 K" (PID: DI3923)
TIDE STAFF LOCATED AT "872 2213 K" (PID: DI3923)
- DEPTHS DEPICTED BY THIS SURVEY ARE REFERENCED TO MLLW, TIDAL EPOCH 1983-2001 AS REPORTED BY THE NATIONAL OCEANIC AND ATMOSPHERIC ADMINISTRATION (NOAA). NOAA'S VDATUM MODEL WAS USED AND CALIBRATED TO THE PUBLISHED MLLW HEIGHTS OF THE BENCHMARKS ASSOCIATED WITH THE TIDE GAGE SITES SPECIFIED BELOW:
NOAA TIDAL STATION 872-2213 FOR ALL CUTS.
VERTICAL MEASUREMENTS WERE MADE USING AN EDGETECH 6205 COMBINED MULT-BEAM AND SIDESCAN SOUNDER. ALL SOUNDINGS SHOWN ARE IN HIGH FREQUENCY.
- VESELSEL DATE OF SURVEY CUT
SB-44 14 SEP 2017 1, 2, TURNING BASIN
- AIDS TO NAVIGATION WERE LOCATED DURING THIS SURVEY.
- THE INFORMATION DEPICTED ON THIS MAP REPRESENTS THE RESULTS OF SURVEYS MADE ON THE DATES INDICATED ABOVE AND CAN ONLY BE CONSIDERED AS INDICATING THE GENERAL CONDITIONS AT THAT TIME. THIS CHART IS SOLELY FOR THE DISTRIBUTION OF AVAILABLE DEPTHS AT THE TIME OF THE SURVEY.
- SURVEY ACCURACY PERFORMANCE STANDARDS, QUALITY CONTROL, AND QUALITY ASSURANCE REQUIREMENTS WERE FOLLOWED DURING THIS SURVEY IN ACCORDANCE WITH USACE EM 1110-2-1003, HYDROGRAPHIC SURVEYING, 30 NOV 13.

LEGEND	
	MONUMENT
	LIGHTED BEACON
	GREEN DAYBEACON
	RED DAYBEACON
	RED LIGHTED BUOY
	GREEN LIGHTED BUOY
	CAN BUOY
	NUN BUOY
	TIDE STAFF
	PROJECT DEPTH

US Army Corps of Engineers
Jacksonville District
SAFETY ON THIS JOB DEPENDS ON YOU

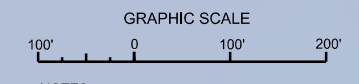
	DEPARTMENT OF THE ARMY JACKSONVILLE DISTRICT, CORPS OF ENGINEERS JACKSONVILLE, FLORIDA
	Drawn by: GHR Checked by: GHR Date: SEP 2017
	Project Name: FT. PIERCE HARBOR, ST. LUCIE COUNTY, FLORIDA Project No: 17-204-PM-01.DGN Revision: 1
	POST-HURRICANE IRMA EXAM SURVEY FY17 28 & 30-FOOT PROJECT INDEX, LOCATION AND VICINITY MAP
	Scale: AS SHOWN Drawing no. 1 SHEET 01 OF 08



MATCHLINE SHEET NO. 03 STA. 30+00

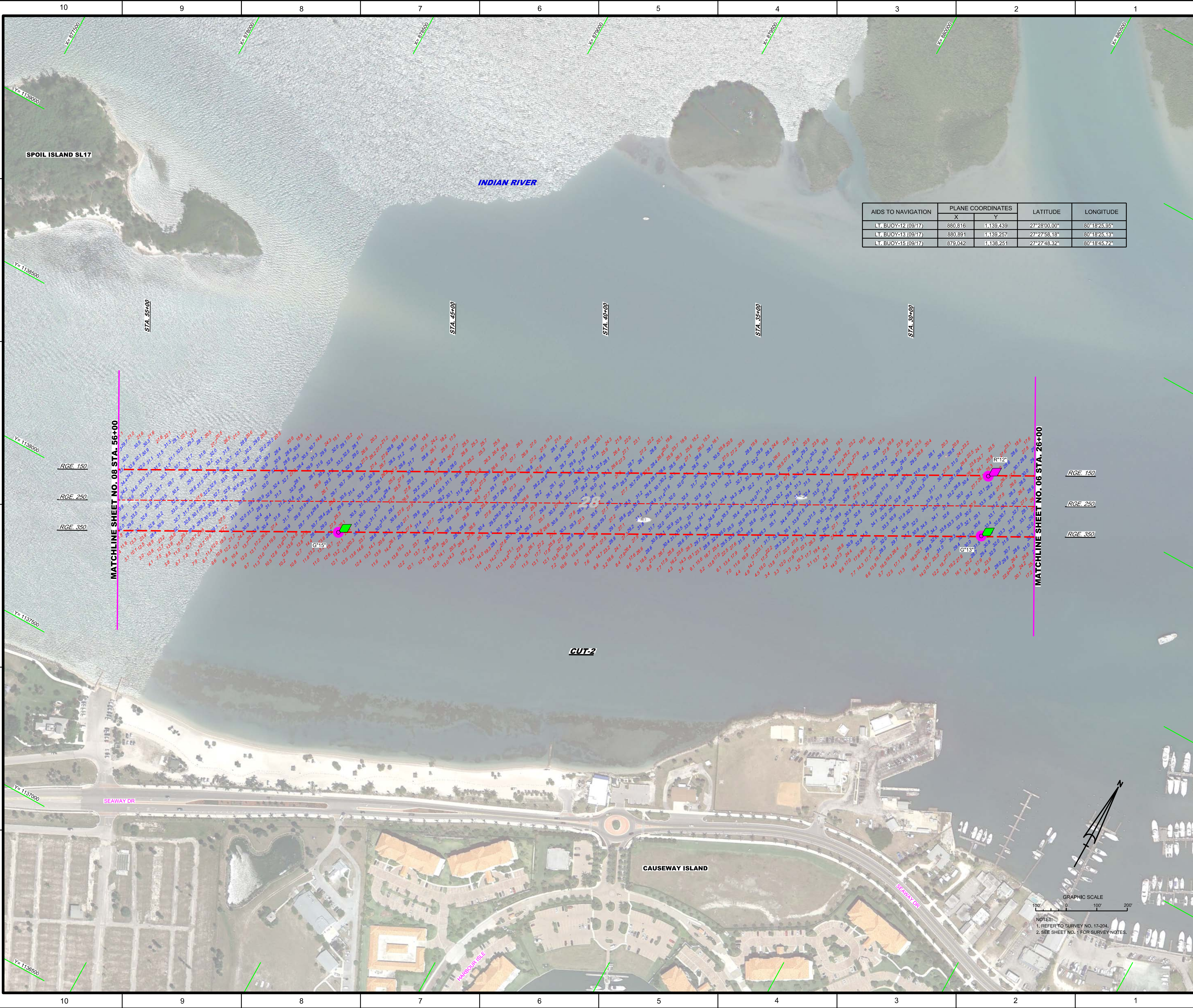
NO DATA COLLECTED DUE TO ROUGH SEAS

CUT-1




NOTES:
1. REFER TO SURVEY NO. 17-204.
2. SEE SHEET NO. 1 FOR SURVEY NOTES.

US Army Corps of Engineers Jacksonville District SAFETY ON THIS JOB DEPENDS ON YOU	
DESIGNED BY: WRM DRAWN BY: WRM CHECKED BY: WRM DATE: SEP 2017	DESIGNED BY: GMR DRAWN BY: GMR CHECKED BY: GMR DATE: SEP 2017
DEPARTMENT OF THE ARMY JACKSONVILLE DISTRICT, CORPS OF ENGINEERS JACKSONVILLE, FLORIDA	
FT. PIERCE HARBOR, ST. LUCIE COUNTY, FLORIDA POST-HURRICANE IRMA EXAM SURVEY FY17 28 & 30-FOOT PROJECT STA. 0+00 THRU STA. 30+00 CUT-1 PLAN	
Scale: AS SHOWN Drawing no. 2	
SHEET 02 OF 08	



AIDS TO NAVIGATION	PLANE COORDINATES		LATITUDE	LONGITUDE
	X	Y		
LT. BUOY-12 (09/17)	880,816	1,139,439	27°28'00.00"	80°18'25.95"
LT. BUOY-13 (09/17)	880,891	1,139,257	27°27'58.18"	80°18'25.13"
LT. BUOY-15 (09/17)	879,042	1,138,251	27°27'48.32"	80°18'45.72"



US Army Corps of Engineers
Jacksonville District

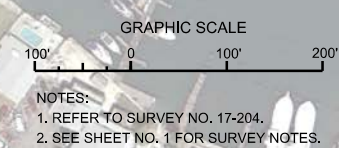
**SAFETY ON THIS JOB
DEPENDS ON YOU**

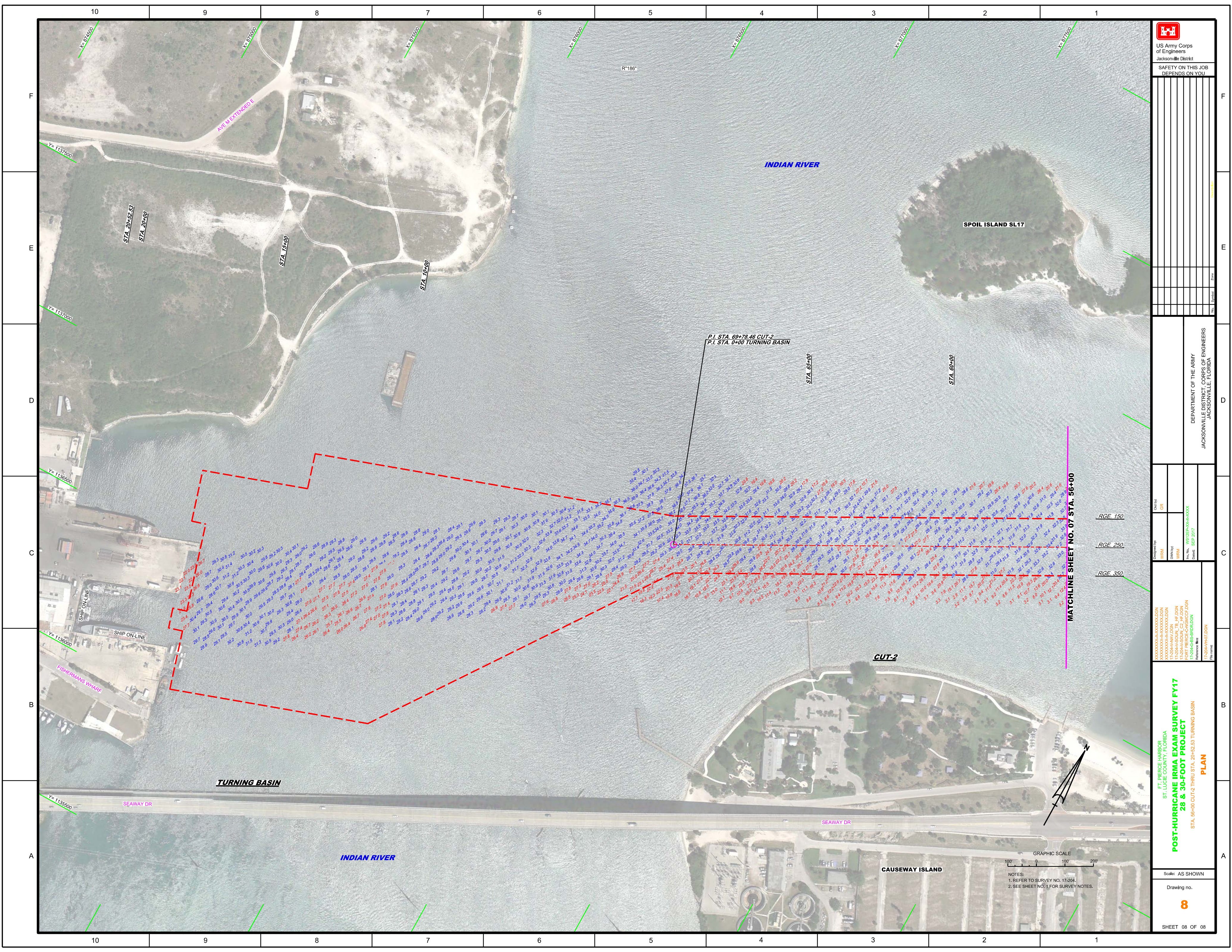
DEPARTMENT OF THE ARMY
JACKSONVILLE DISTRICT, CORPS OF ENGINEERS
JACKSONVILLE, FLORIDA

Drawn by: **WRM**
Checked by: **WRM**
Scale: **AS SHOWN**

Project: **POST-HURRICANE IRMA EXAM SURVEY FY17
28 & 30-FOOT PROJECT**

Sheet: **7**
SHEET 07 OF 08





US Army Corps of Engineers
Jacksonville District

SAFETY ON THIS JOB DEPENDS ON YOU

DEPARTMENT OF THE ARMY
JACKSONVILLE DISTRICT, CORPS OF ENGINEERS
JACKSONVILLE, FLORIDA

XXXXXXXXXXXXXXXXXXXX
XXXXXXXXXXXXXXXXXXXX
XXXXXXXXXXXXXXXXXXXX
17-204-HAVY.DGN
17-204-SOIL_TB_HF.DGN
17-204-SC-CAIG-CC.DGN
17-204-GB-SB-RI-AL.DGN
Reference files:
17-204-HAVY.DGN
File name:

FT PIERCE HARBOR
ST. LUCIE COUNTY, FLORIDA
**POST-HURRICANE IRMA EXAM SURVEY FY17
28 & 30-FOOT PROJECT**
STA. 56+00 CUT-2 THRU STA. 20+45.65 TURNING BASIN
PLAN

Scale: AS SHOWN

Drawing no.

8

SHEET 08 OF 08

RGE 150
RGE 250
RGE 350

MATCHLINE SHEET NO. 07 STA. 56+00

GRAPHIC SCALE
100' 0' 200'
NOTES:
1. REFER TO SURVEY NO. 17-204.
2. SEE SHEET NO. 1 FOR SURVEY NOTES.

CAUSEWAY ISLAND

INDIAN RIVER

SPOIL ISLAND SL17

P.I. STA. 69+78.46 CUT-2
P.I. STA. 0+00 TURNING BASIN

STA. 65+00

STA. 69+00

TURNING BASIN

SEAWAY DR

SEAWAY DR

INDIAN RIVER

STA. 20+42.57
STA. 20+00

STA. 15+00

STA. 10+20

Y= 1137500

Y= 1137500

Y= 1136500

Y= 1136000

Y= 1135500

10

9

8

7

6

5

4

3

2

1

F

E

D

C

B

A

F

E

D

C

B

A

10

9

8

7

6

5

4

3

2

1