

AIDS TO NAVIGATION	PLANE COORDINATES		LATITUDE	LONGITUDE
	X	Y		
LT. BUOY-13 (09/17)	791,392	1,481,402	28°24'30.04"	80°34'45.64"

- NOTES:
1. REFER TO SURVEY NO. 17-202.
  2. SEE SHEET NO.1 FOR SURVEY NOTES.
  3. LAT/LONG GRID TICS ARE AT 10-SECOND INTERVALS.

Zone	N	A	ABCD
Sheet	12	13	14

DEPARTMENT OF THE ARMY  
JACKSONVILLE DISTRICT, CORPS OF ENGINEERS  
JACKSONVILLE, FLORIDA

17-202-GS-BR/BLDGN  
CANIBER-CANIBCF, POST - CONSTRUCTION/DGN  
16-126-D-DA/SOJL, CO. 27-SEP-17, JF.DGN  
17-202-GS-NAV/DGN

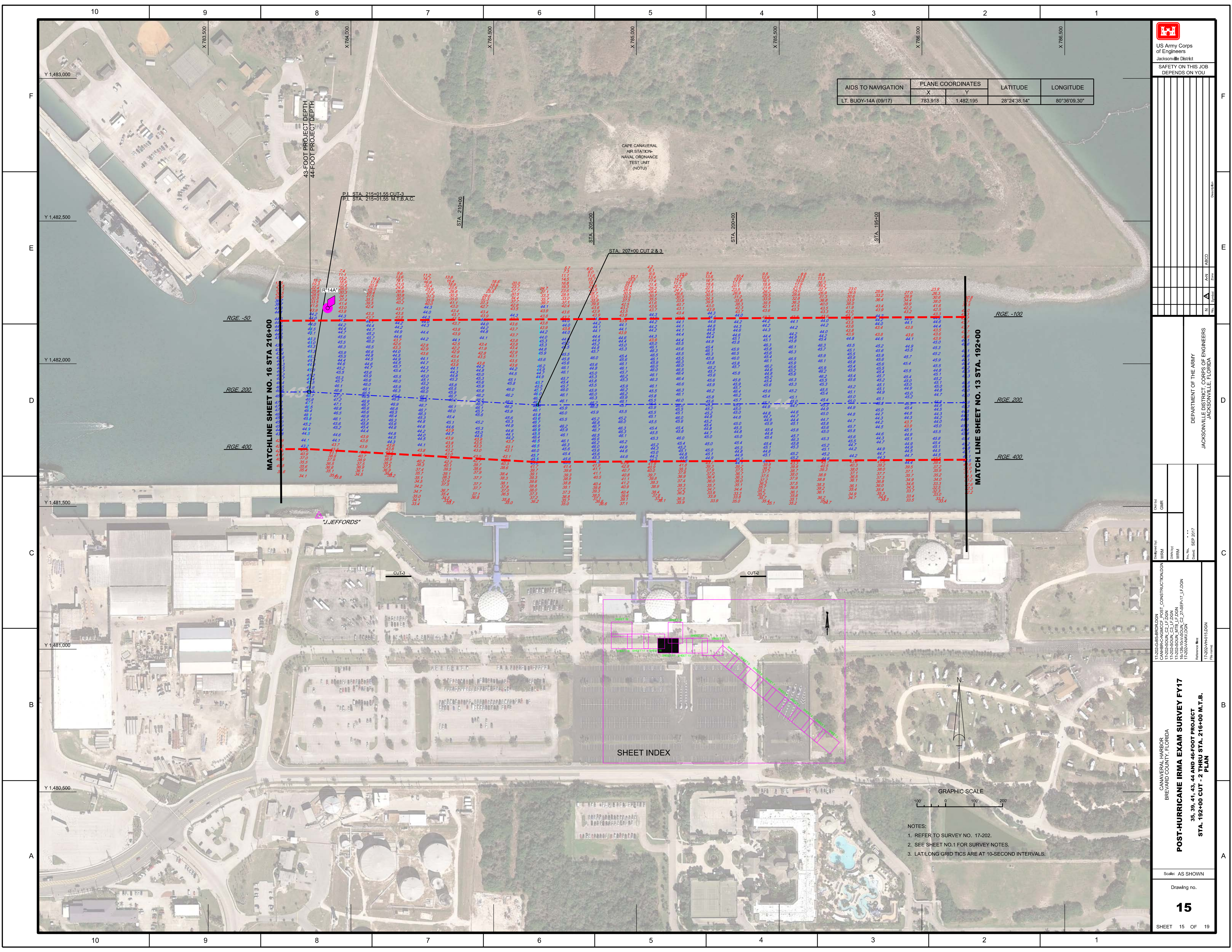
Scale: AS SHOWN

Drawing no.

CANAVERAL HARBOR  
BREVARD COUNTY, FLORIDA  
**POST-HURRICANE IRMA EXAM SURVEY FY17**  
35, 39, 41, 43, 44 AND 46-FOOT PROJECT  
STA. 137+00 THRU STA. 164+00 CUT - 2  
PLAN







AIDS TO NAVIGATION	PLANE COORDINATES		LATITUDE	LONGITUDE
	X	Y		
LT. BUOY-14A (09/17)	783,918	1,482,195	28°24'38.14"	80°36'09.30"

US Army Corps of Engineers
   
 Jacksonville District
   
 SAFETY ON THIS JOB
   
 DEPENDS ON YOU

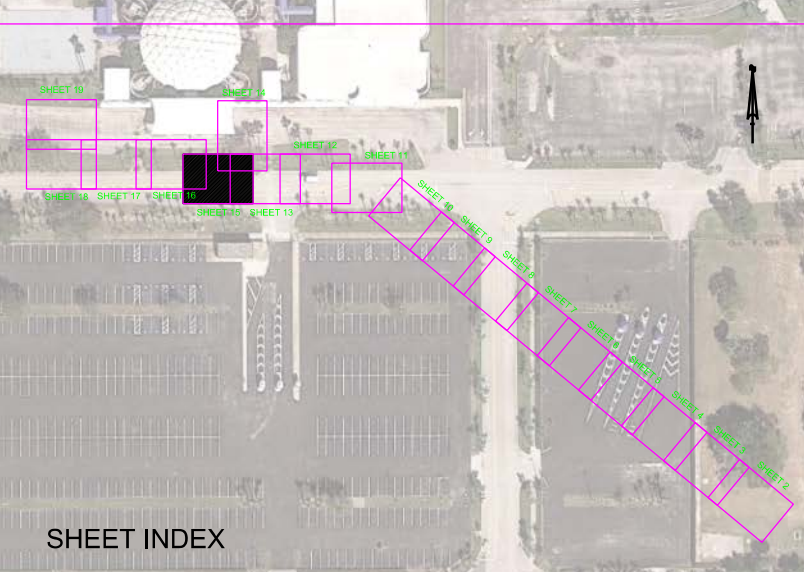
DEPARTMENT OF THE ARMY
   
 JACKSONVILLE DISTRICT, CORPS OF ENGINEERS
   
 JACKSONVILLE, FLORIDA

17-2022-AS-BUILDING
   
 CANBERN-NAMECFC POST CONSTRUCTION/DON
   
 17-2022-SOUN, MTS, LF, DGN
   
 17-2022-SOUN, MTS, LF, DGN
   
 17-2022-NAV/DON

CANAVERAL HARBOR
   
 BREVARD COUNTY, FLORIDA
   
**POST-HURRICANE IRMA EXAM SURVEY FY17**
  
**35, 39, 41, 43, 44 AND 46-FOOT PROJECT**
  
**STA. 192+00 CUT - 2 THRU STA. 216+00 M.T.B.**
  
**PLAN**

Scale: AS SHOWN
   
 Drawing no.
   
**15**
  
 SHEET 15 OF 19

- NOTES:
- REFER TO SURVEY NO. 17-202.
  - SEE SHEET NO.1 FOR SURVEY NOTES.
  - LAT/LONG GRID TICS ARE AT 10-SECOND INTERVALS.



MATCHLINE SHEET NO. 16 STA 216+00

MATCHLINE SHEET NO. 13 STA. 192+00

P.I. STA. 215+01.55 CUT-3  
P.I. STA. 215+01.55 M.T.B.A.C.

STA. 207+00 CUT 2 & 3

43-FOOT PROJECT DEPTH  
44-FOOT PROJECT DEPTH

CAPE CANAVERAL  
AIR STATION-  
NAVAL ORDNANCE  
TEST UNIT  
(NOTU)

R"14A"

"J.JEFFORDS"

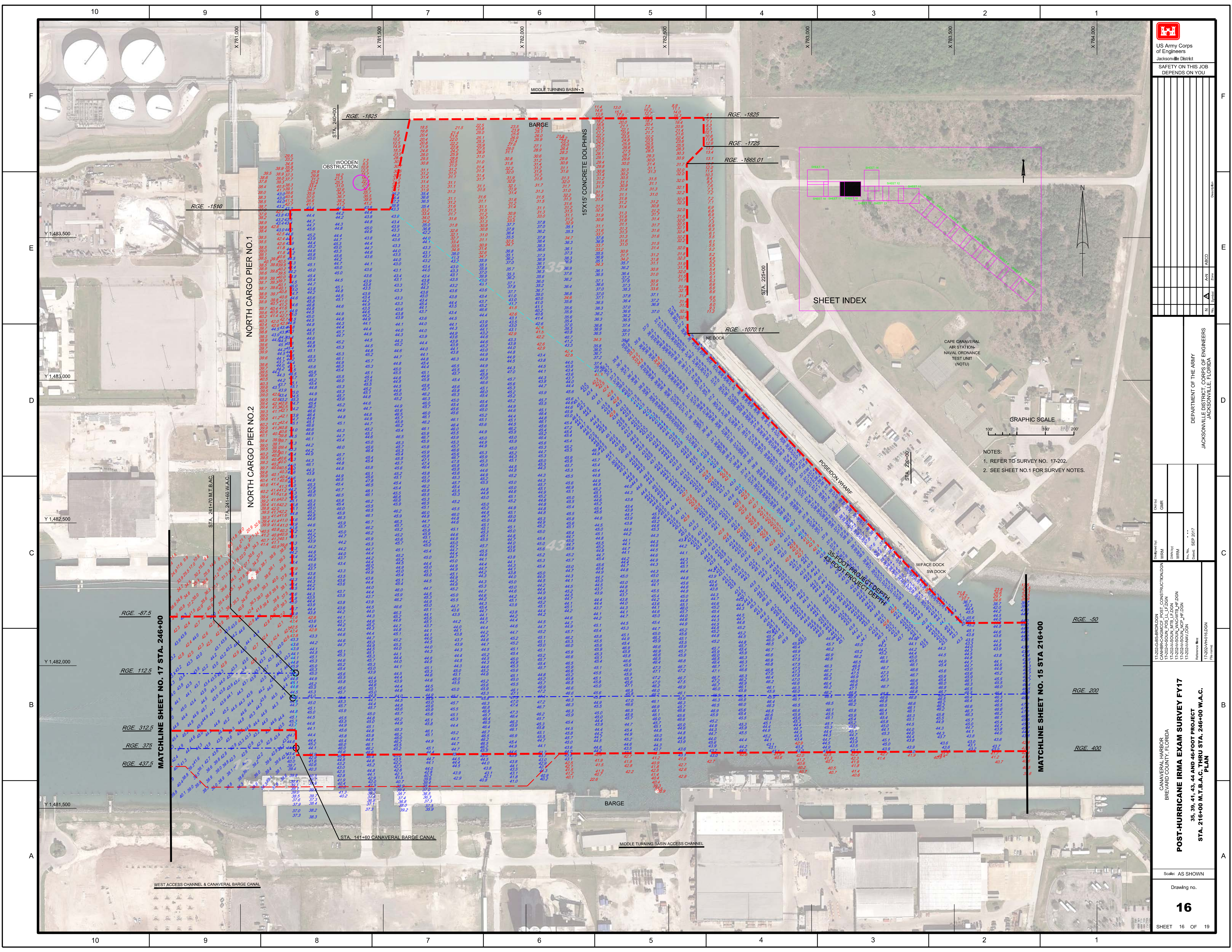
CUT-3

CUT-2

SHEET INDEX

GRAPHIC SCALE





Zone	AN	ABCD
North	N	A
East	A	B
South	B	C
West	C	D

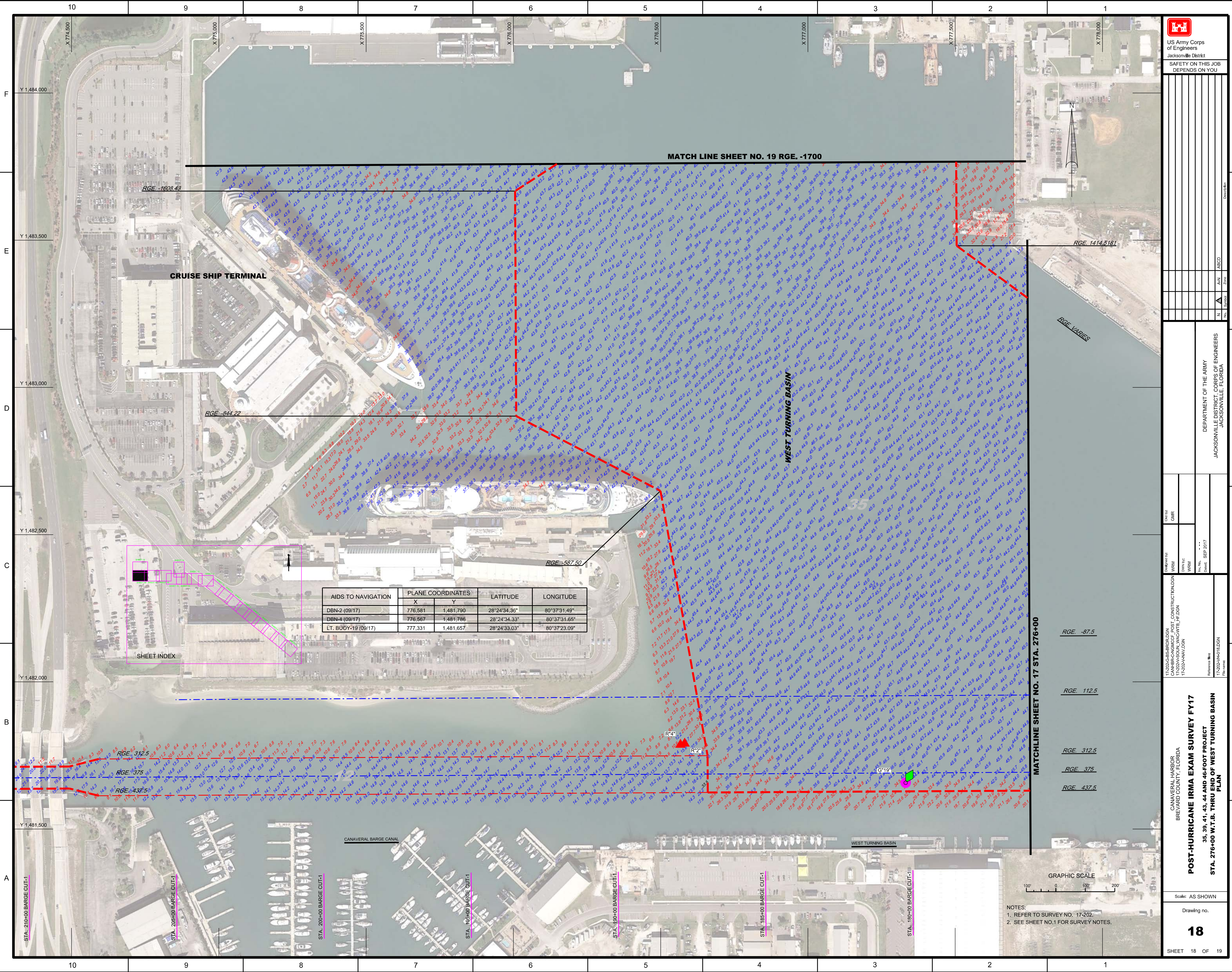
DEPARTMENT OF THE ARMY  
JACKSONVILLE DISTRICT, CORPS OF ENGINEERS  
JACKSONVILLE, FLORIDA

Drawn by: GHR  
Checked by: WRM  
Date: SEP 2017

17-202A-BS-BROLDEN  
CANAL-CONSTRUCTION  
17-202A-SOUL-IRMA-CON  
17-202A-SOUL-IRMA-CON  
17-202A-SOUL-IRMA-CON  
17-202A-SOUL-IRMA-CON

CANAVERR HARBOR  
BREVARD COUNTY, FLORIDA  
**POST-HURRICANE IRMA EXAM SURVEY FY17**  
35, 39, 41, 43, 44 AND 46-FOOT PROJECT  
STA. 216+00 M.T.B.A.C. THRU STA. 246+00 W.A.C.  
PLAN





RGE -1608.43

CRUISE SHIP TERMINAL

RGE -844.22

MATCH LINE SHEET NO. 19 RGE. -1700

RGE 1414.5181

RGE VARIES

WEST TURNING BASIN

RGE -587.50

AIDS TO NAVIGATION	PLANE COORDINATES		LATITUDE	LONGITUDE
	X	Y		
DBN-2 (09/17)	776,581	1,481,790	28°24'34.36"	80°37'31.49"
DBN-4 (09/17)	776,567	1,481,786	28°24'34.33"	80°37'31.65"
LT. BUOY-19 (09/17)	777,331	1,481,657	28°24'33.03"	80°37'23.09"

SHEET INDEX

RGE -87.5

RGE 112.5

RGE 312.5

RGE 375

RGE 437.5

MATCHLINE SHEET NO. 17 STA. 276+00



NOTES:  
1. REFER TO SURVEY NO. 17-202.  
2. SEE SHEET NO.1 FOR SURVEY NOTES.

17-202-C&S-BRDLDN  
CANAL-BARGE CANAL POST CONSTRUCTION/DON  
17-202-A&V-DON

Designed by: WRM  
Checked by: WRM  
Date: SEP 2017

Drawn by: GHR  
Checked by: GHR

Reference Map:  
17-202-A&V-DON  
File name:

CANAVERAL HARBOR  
BREVARD COUNTY, FLORIDA

**POST-HURRICANE IRMA EXAM SURVEY FY17**  
35, 39, 41, 43, 44 AND 46-FOOT PROJECT  
STA. 276+00 W.T.B. THRU END OF WEST TURNING BASIN  
PLAN

Scale: AS SHOWN

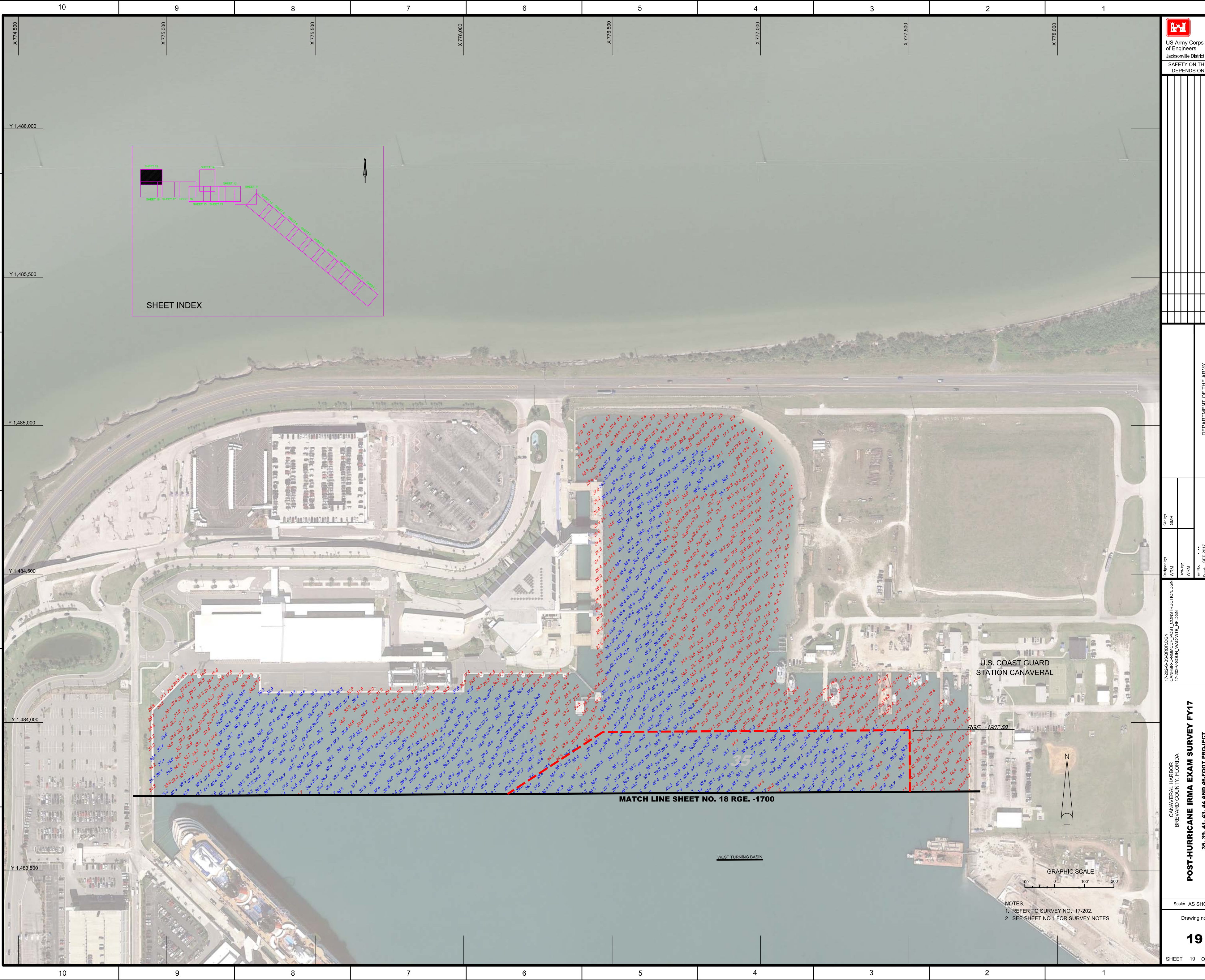
Drawing no.  
**18**

SHEET 18 OF 19

DEPARTMENT OF THE ARMY  
JACKSONVILLE DISTRICT, CORPS OF ENGINEERS  
JACKSONVILLE, FLORIDA

Author: AN  
Checker: ABCD  
Reviewer: N  
Date: 11/18/17





SHEET INDEX

U.S. COAST GUARD  
STATION CANAVERAL

MATCH LINE SHEET NO. 18 RGE. -1700

RGE. -1907.50



GRAPHIC SCALE

- NOTES:
1. REFER TO SURVEY NO. 17-202.
  2. SEE SHEET NO.1 FOR SURVEY NOTES.

<p>US Army Corps of Engineers Jacksonville District</p>	
<p>SAFETY ON THIS JOB DEPENDS ON YOU</p>	
<p>17-202-CA-S-BUILDON CANAVAR-HARBOR BREVARD COUNTY, FLORIDA</p>	<p>17-202-CA-CONSTRUCTION POST-CONSTRUCTION 17-202-CA-SUB-17-202-CA-17-202-CA</p>
<p>17-202-CA-IRMA EXAM SURVEY FY17 35, 39, 41, 43, 44 AND 46-FOOT PROJECT WEST TURNING BASIN PLAN</p>	<p>DEPARTMENT OF THE ARMY JACKSONVILLE DISTRICT, CORPS OF ENGINEERS JACKSONVILLE, FLORIDA</p>
<p>Scale: AS SHOWN</p>	<p>Drawing no.</p>
<p><b>19</b></p>	
<p>SHEET 19 OF 19</p>	