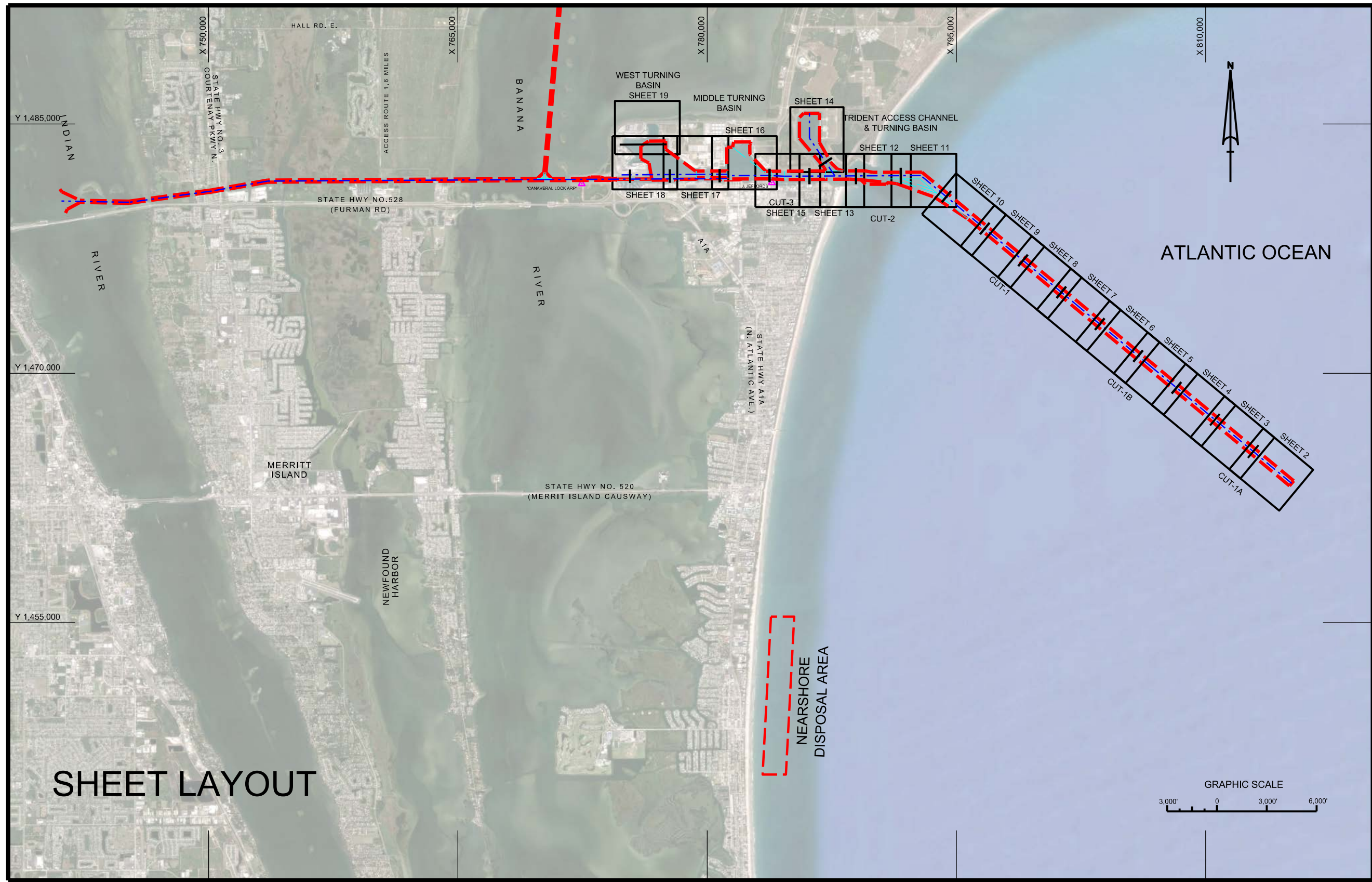
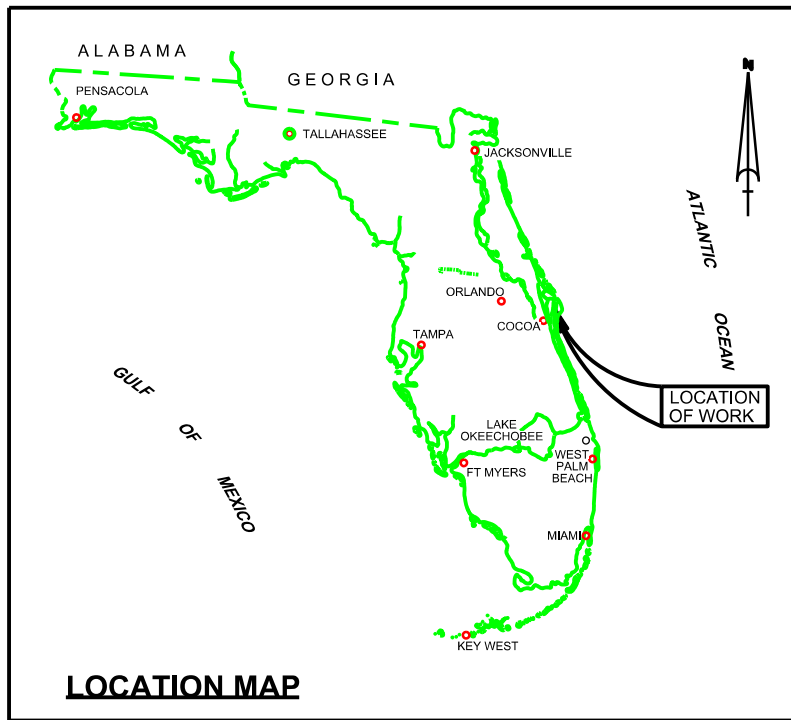


CANAVERAL HARBOR BREVARD COUNTY, FLORIDA POST-HURRICANE IRMA EXAM SURVEY FY17

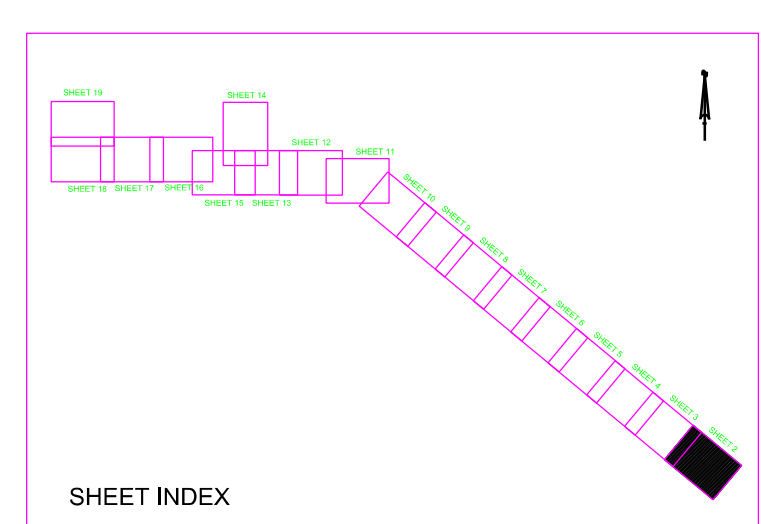
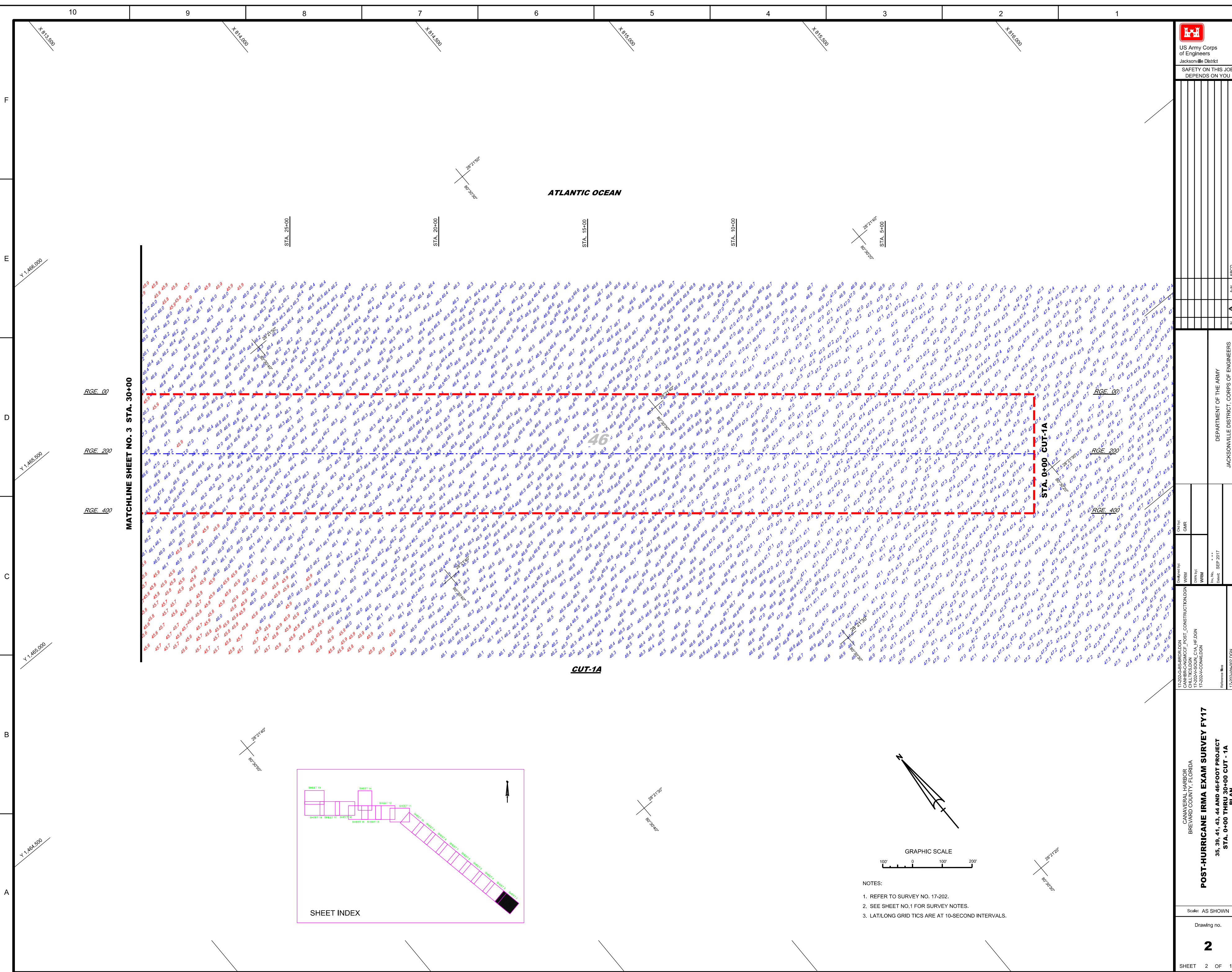


- SURVEY NOTES**
- REFER TO SURVEY NO. 17-202.
 - TIDAL REDUCTIONS WERE OBTAINED UTILIZING A REAL-TIME KINEMATIC (RTK) GPS AND REFERENCED TO MLLW UTILIZING A HYPACK KINEMATIC TIDE DATUM (KTD) MODEL. KTD FILE NAME IS: "CANAVERALHBR-2015 02 20.KTD".
 - ALL ELEVATIONS ARE BELOW THE CHART DATUM UNLESS PRECEDED BY A (+) SIGN.
 - PLANE COORDINATES ARE BASED ON THE TRANSVERSE MERCATOR PROJECTION FOR THE EAST ZONE OF FLORIDA AND REFERENCED TO NORTH AMERICAN DATUM OF 1983 (NAD83).
 - ALL STATIONING REFERS TO THE CENTERLINE OF THE CHANNEL.
 - THIS SURVEY WAS PERFORMED USING REAL-TIME KINEMATIC (RTK) GPS POSITIONING WITH THE FOLLOWING REFERENCE BASE LOCATION:
 *REFERENCE BASE LOCATED AT "CANAVERAL LOCK ARP" (OPUS PID: BBCV67)
 *TIDE STAFF LOCATED FROM "JEFFORDS" (COE PID: BBCQ55)
 - DEPTHS DEPICTED BY THIS SURVEY ARE REFERENCED TO MLLW, TIDAL EPOCH 1983-2001 AS REPORTED BY THE NATIONAL OCEANIC AND ATMOSPHERIC ADMINISTRATION (NOAA). NOAA'S DATUM MODEL WAS USED AND CALIBRATED TO THE PUBLISHED MLLW HEIGHTS OF THE BENCHMARKS ASSOCIATED WITH THE TIDE GAGE SITES SPECIFIED BELOW:
 NOAA TIDAL STATION 872-1604, TRIDENT PIER, CANAVERAL, FL
 - FLORIDA II VERTICAL MEASUREMENTS WERE MADE USING A R2 SONIC 2024 MULTI-BEAM SYSTEM OPERATING AT 240 KHZ AND A ROSS SMART SOUNDER SINGLE-BEAM TRANSDUCER OPERATING AT 28200 KHZ. SB-36 VERTICAL MEASUREMENTS WERE MADE USING RESON T20P MULTI-BEAM SYSTEM OPERATING AT 400 KHZ AND A ROSS SINGLE-BEAM SMARTSOUNDER OPERATING AT 28200 KHZ. HIGH FREQUENCY SOUNDINGS ARE SHOWN FOR THE WEST ACCESS CHANNEL, WEST TURNING BASIN, CANAVERAL BARGE CANAL, AND CUT-1A. LOW FREQUENCY SOUNDINGS SHOWN FOR CUTS 1B, 1, 2, 3, T.A.C., T.T.B., MTB AND THE POSEIDON WHARF.
- | VESSEL | DATE OF SURVEY | CUT |
|---------------|----------------|---|
| SB-36 | 14 SEP 2017 | WAC, WTB, CUT-A |
| SB-36 | 15 SEP 2017 | CUT-2 (STA. 197+00 - 207+00), TAC, TTB |
| SV-FLORIDA II | 15 SEP 2017 | CUT-1A, CUT-1B (STA. 43+00 - 55+00), CUT-1 (STA. 0+00 - 47+00) |
| SB-36 | 16 SEP 2017 | POSEIDON WHARF, MTB, CUT-3, CARGO PIER |
| SB-36 | 17 SEP 2017 | WAC, MTB, BARGE CANAL |
| SB-46 | 27 SEP 2017 | CUT-1B (STA. 0+00 - 42+00), CUT-1 (STA. 48+00 - 125+00), CUT-2 (STA. 126+00 - 196+00) |
- AIDS TO NAVIGATION WERE LOCATED DURING THIS SURVEY FOR THE INNER CUTS. AIDS TO NAVIGATION SHOWN ALONG OUTER CUTS ARE FROM SURVEY 17-160.
 - THE INFORMATION DEPICTED ON THIS MAP REPRESENTS THE RESULTS OF SURVEYS MADE ON THE DATES INDICATED ABOVE AND CAN ONLY BE CONSIDERED AS INDICATING THE GENERAL CONDITIONS AT THAT TIME. THIS CHART IS SOLELY FOR THE DISTRIBUTION OF AVAILABLE DEPTHS AT THE TIME OF THE SURVEY.
 - SURVEY ACCURACY PERFORMANCE STANDARDS, QUALITY CONTROL, AND QUALITY ASSURANCE REQUIREMENTS WERE FOLLOWED DURING THIS SURVEY IN ACCORDANCE WITH USACE EM 1110-2-1003, HYDROGRAPHIC SURVEYING, 30 NOV 13.

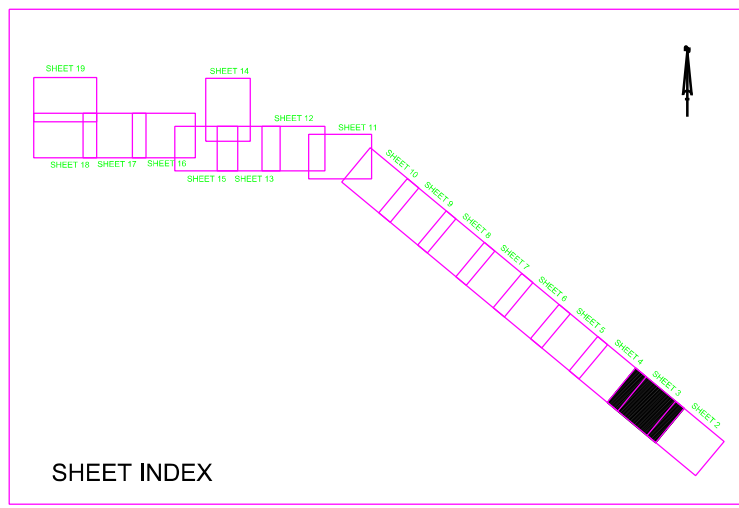
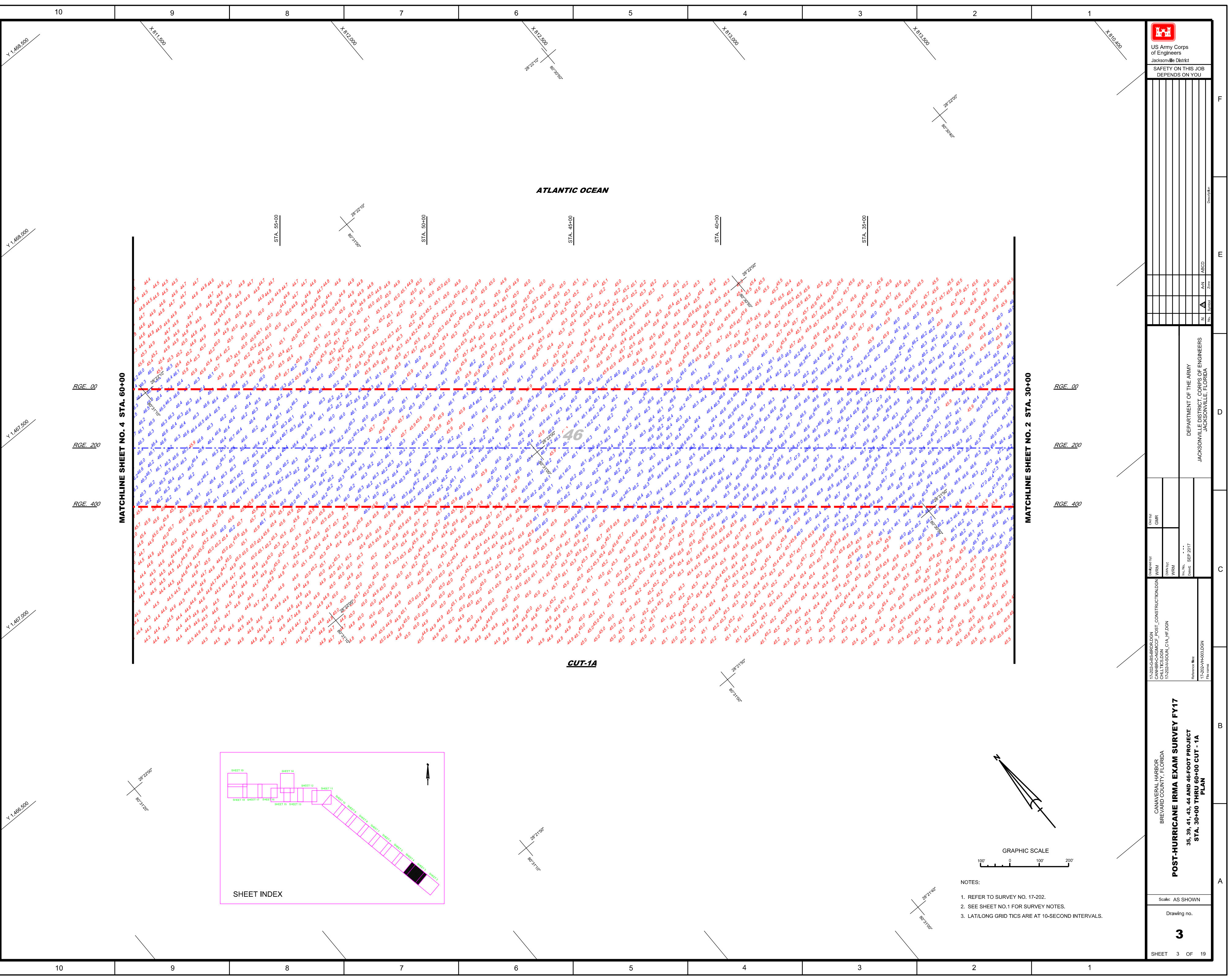
LEGEND

	MONUMENT
	LIGHTED BEACON
	GREEN DAYBEACON
	RED DAYBEACON
	RED LIGHTED BUOY
	GREEN LIGHTED BUOY
	CAN BUOY
	NUN BUOY
	TIDE STAFF
	PROJECT DEPTH

CANAVERAL HARBOR BREVARD COUNTY, FLORIDA	POST-HURRICANE IRMA EXAM SURVEY FY17 35, 39, 41, 43, 44 AND 46-FOOT PROJECT INDEX, LOCATION AND VICINITY PLAN	DEPARTMENT OF THE ARMY JACKSONVILLE DISTRICT, CORPS OF ENGINEERS JACKSONVILLE, FLORIDA	Scale: AS SHOWN	Drawing no. 1
SHEET 1 OF 19				



- NOTES:
1. REFER TO SURVEY NO. 17-202.
 2. SEE SHEET NO. 1 FOR SURVEY NOTES.
 3. LAT/LONG GRID TICS ARE AT 10-SECOND INTERVALS.



NOTES:
1. REFER TO SURVEY NO. 17-202.
2. SEE SHEET NO.1 FOR SURVEY NOTES.
3. LAT/LONG GRID TICS ARE AT 10-SECOND INTERVALS.

DEPARTMENT OF THE ARMY
JACKSONVILLE DISTRICT CORPS OF ENGINEERS
JACKSONVILLE, FLORIDA

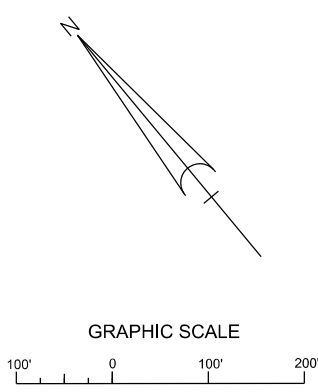
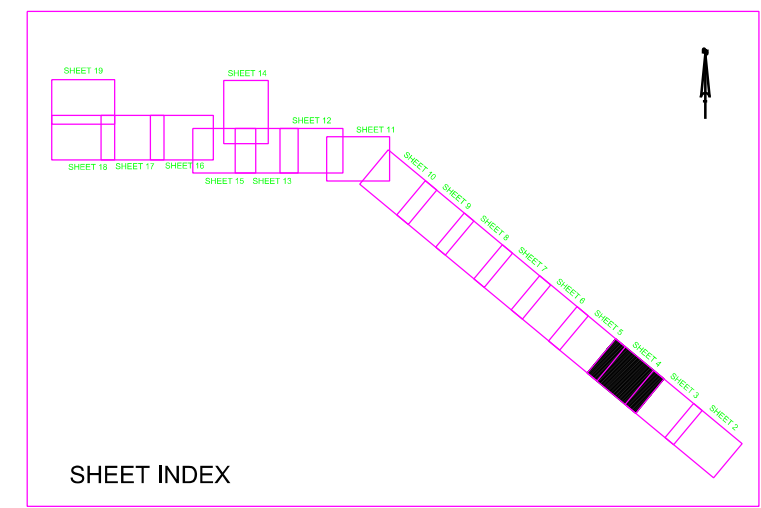
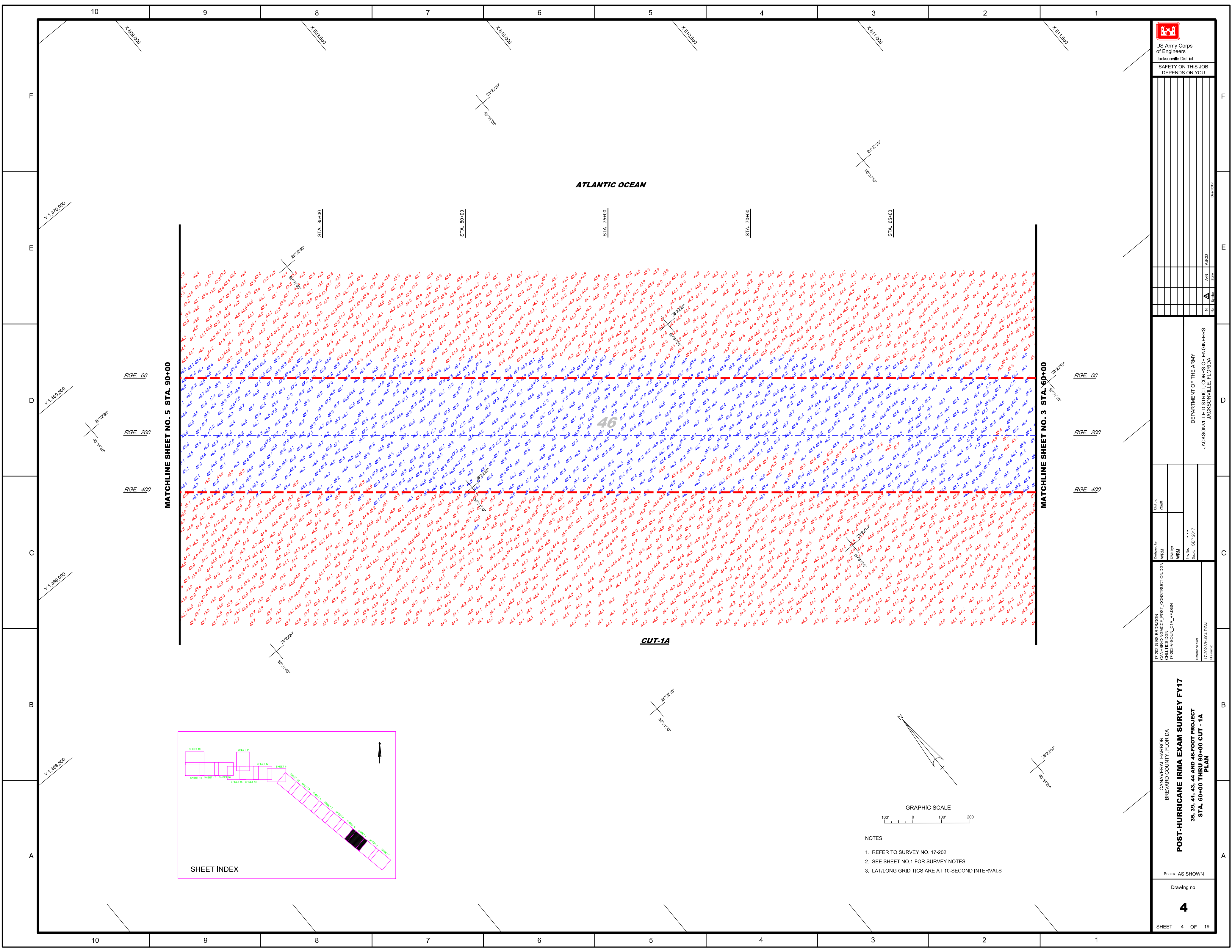
17-202-AS-BROLDGN
CANAL-HARBOR POST-CONSTRUCTION/DON
BREVARD COUNTY, FLORIDA
17-202-AS-SOUL_CIA_HF.DGN

Checked By: GHR
Designed By: WRM
Drawn By: WRM
Scale: AS SHOWN
Date: SEP 2017

CANAL-HARBOR
BREVARD COUNTY, FLORIDA

POST-HURRICANE IRMA EXAM SURVEY FY17
35, 39, 41, 43, 44 AND 46-FOOT PROJECT
STA. 30+00 THRU 60+00 CUT - 1A
PLAN

Scale: AS SHOWN
Drawing no.
3
SHEET 3 OF 19



- NOTES:
- REFER TO SURVEY NO. 17-202.
 - SEE SHEET NO.1 FOR SURVEY NOTES.
 - LAT/LONG GRID TICS ARE AT 10-SECOND INTERVALS.

ATLANTIC OCEAN

46

CUT-1A

MATCHLINE SHEET NO. 5 STA. 90+00

MATCHLINE SHEET NO. 3 STA. 60+00

RGE_00
RGE_200
RGE_400

RGE_00
RGE_200
RGE_400

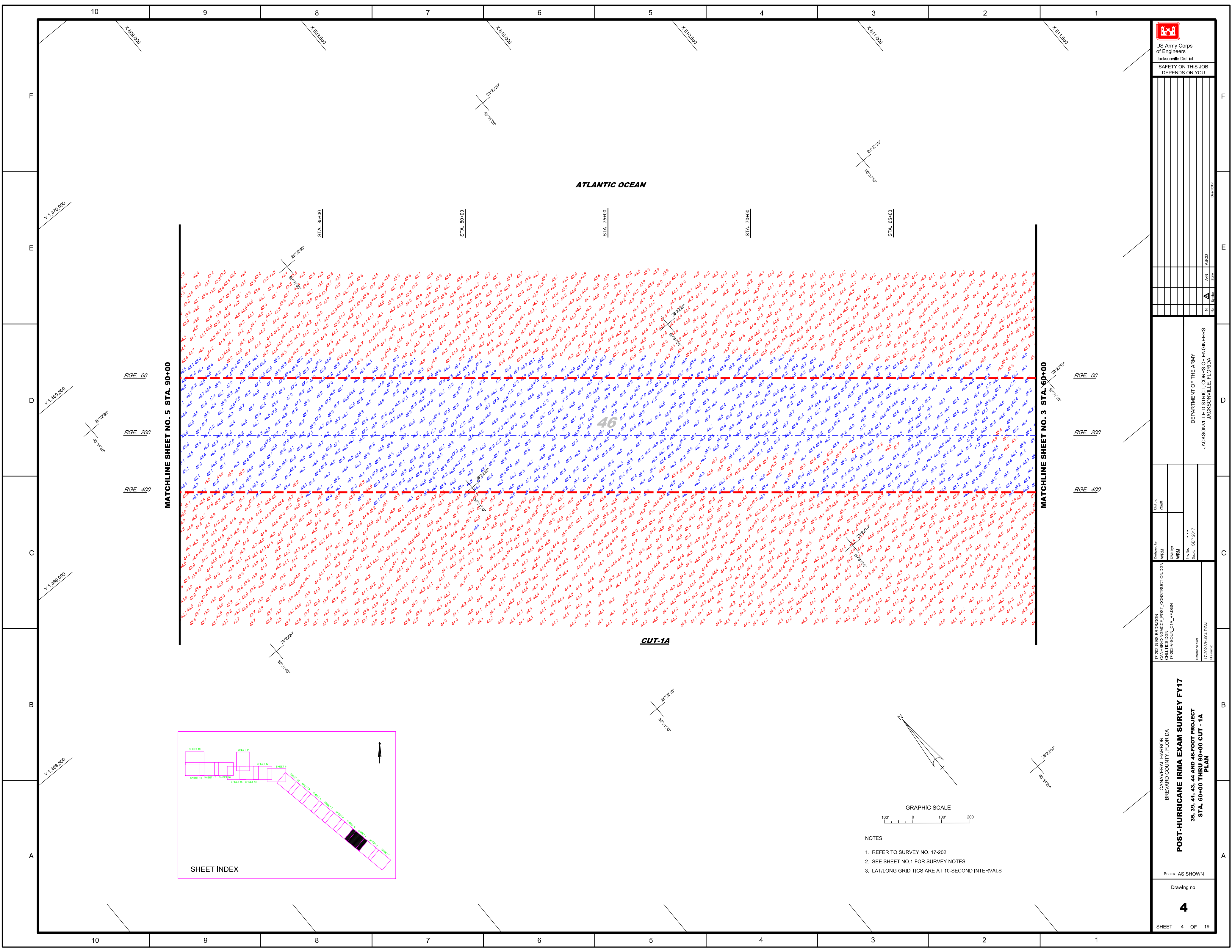
STA. 65+00

STA. 68+00

STA. 75+00

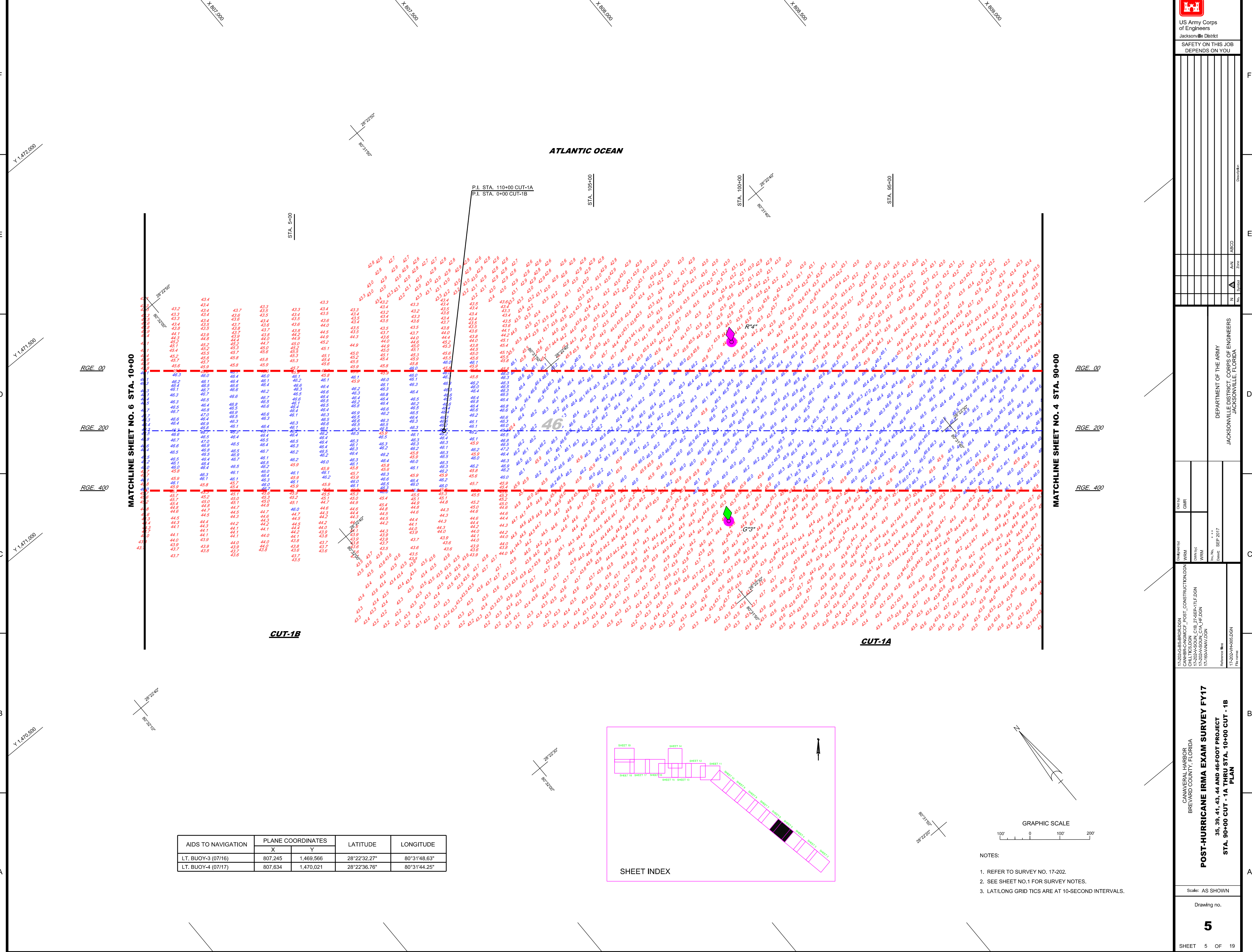
STA. 70+00

STA. 65+00

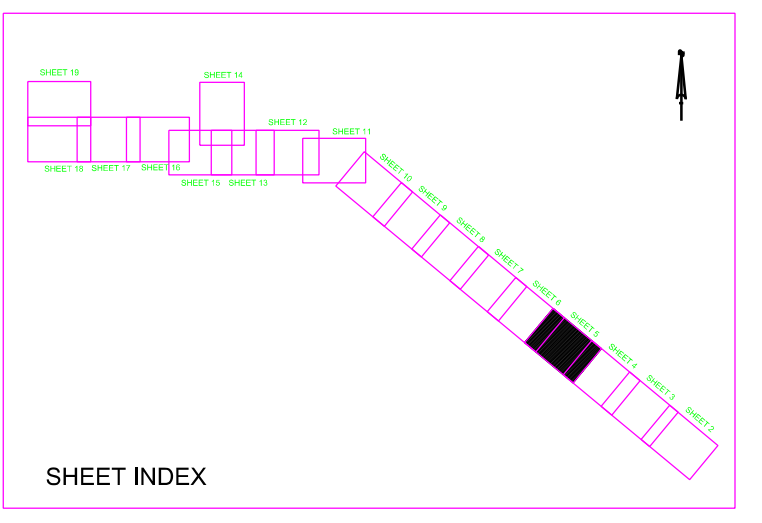


10 9 8 7 6 5 4 3 2 1

US Army Corps of Engineers Jacksonville District		SAFETY ON THIS JOB DEPENDS ON YOU
DATE	NO.	



AIDS TO NAVIGATION	PLANE COORDINATES		LATITUDE	LONGITUDE
	X	Y		
LT. BUOY-3 (07/16)	807,245	1,469,566	28°22'32.27"	80°31'48.63"
LT. BUOY-4 (07/17)	807,634	1,470,021	28°22'36.76"	80°31'44.25"



- NOTES:
1. REFER TO SURVEY NO. 17-202.
 2. SEE SHEET NO.1 FOR SURVEY NOTES.
 3. LAT.LONG GRID TICS ARE AT 10-SECOND INTERVALS.

DEPARTMENT OF THE ARMY
JACKSONVILLE DISTRICT, CORPS OF ENGINEERS
JACKSONVILLE, FLORIDA

Drawn by: GHR
Checked by: GHR

Designed by: WRM
Checked by: WRM

17-202-GS-BRDLDGN
CANIBER-CANIBCF_POST_CONSTRUCTION/DGN
17-202-A-SOUL_C1B_27-SEP-17-F.DGN
17-202-A-SOUL_C1A_11-F.DGN
17-18A-14N-DGN

Reference Date: SEP 2017
File Name: 17-202-A-HDRLEDGN

CANAVERAL HARBOR
BREVARD COUNTY, FLORIDA
POST-HURRICANE IRMA EXAM SURVEY FY17
35, 39, 41, 43, 44 AND 46-FOOT PROJECT
STA. 90+00 CUT - 1A THRU STA. 10+00 CUT - 1B PLAN

Scale: AS SHOWN
Drawing no.
5
SHEET 5 OF 19

Zone	1	2	3	4	5	6	7	8	9	10
Grid	A	B	C	D	E	F	G	H	I	J
Scale	AS SHOWN	AS SHOWN	AS SHOWN	AS SHOWN	AS SHOWN	AS SHOWN	AS SHOWN	AS SHOWN	AS SHOWN	AS SHOWN

DEPARTMENT OF THE ARMY
JACKSONVILLE DISTRICT CORPS OF ENGINEERS
JACKSONVILLE, FLORIDA

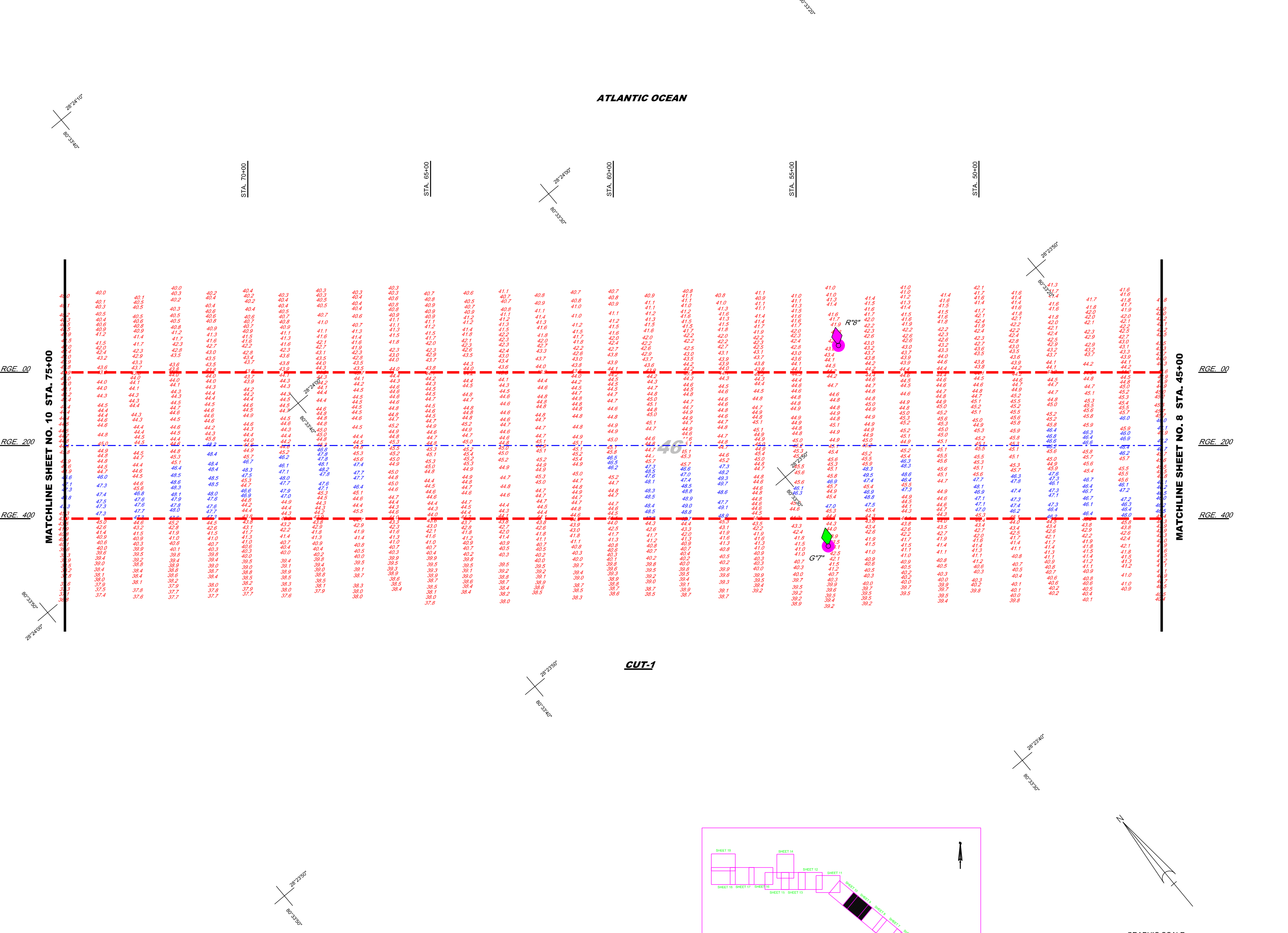
Drawn by:	WRM
Checked by:	WRM
Date:	SEP 2017
Project:	17-202-HARBOR-DGN
Sheet:	35

17-202-GS-HARBOR-DGN
CANAVERAL HARBOR-CANAL-PORT-DGN
16-127AS-SOUL-C-1-C1B-LF-DGN
16-126-16-SOUL-C-1-7-SEP-17-LF-DGN
17-180-HV-DGN

PLAN
35, 39, 41, 43, 44 AND 46-FOOT PROJECT

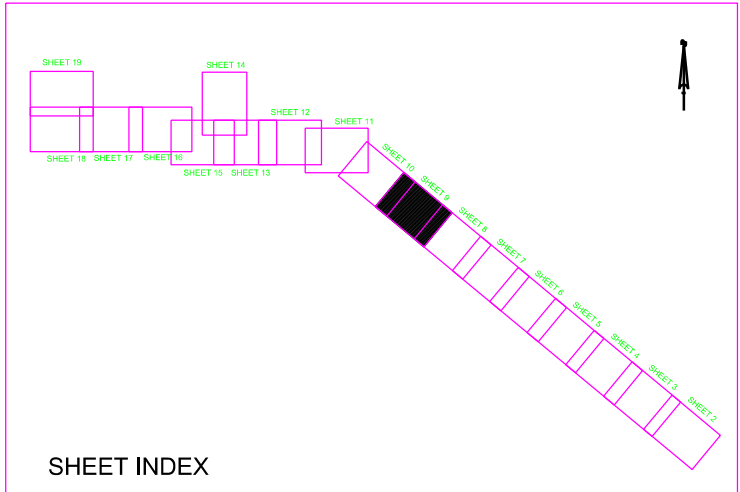
Scale: AS SHOWN
Drawing no.
9
SHEET 9 OF 19

ATLANTIC OCEAN



MATCHLINE SHEET NO. 10 STA. 75+00

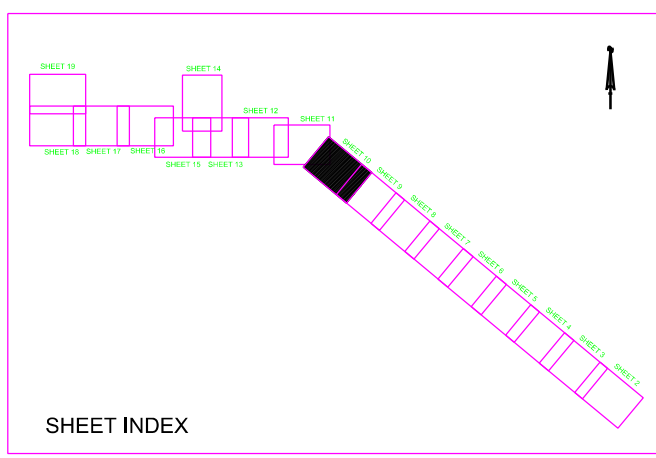
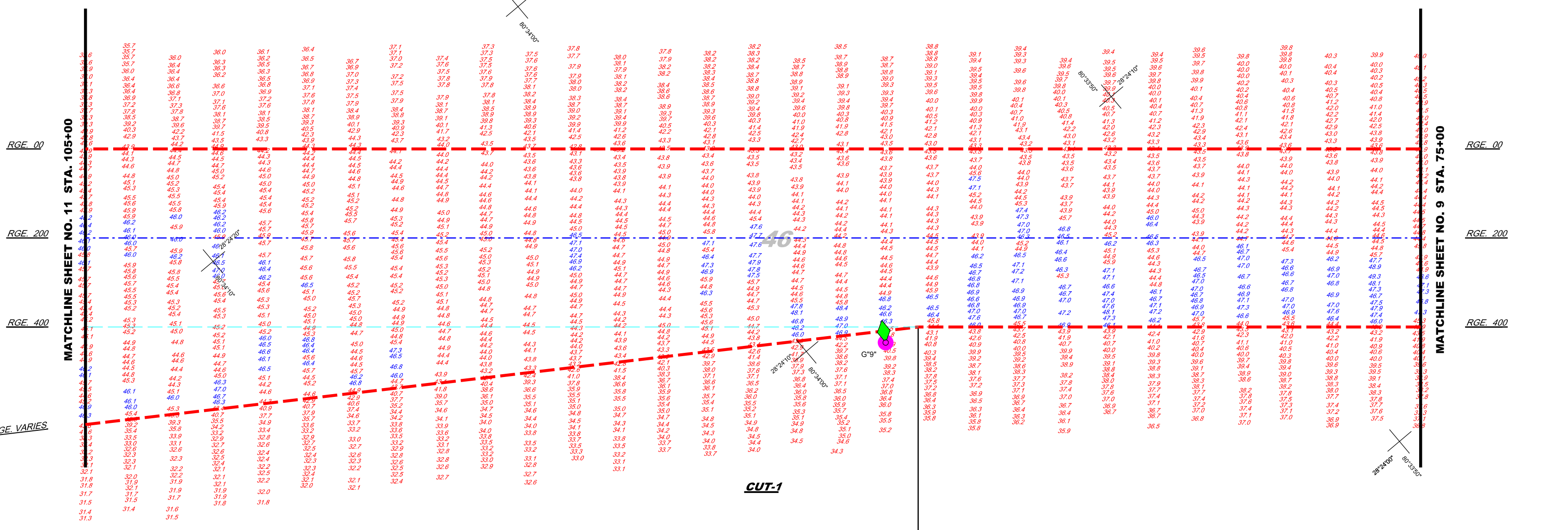
MATCHLINE SHEET NO. 8 STA. 45+00



- NOTES:
1. REFER TO SURVEY NO. 17-202.
 2. SEE SHEET NO.1 FOR SURVEY NOTES.
 3. LAT/LONG GRID TICS ARE AT 10-SECOND INTERVALS.

AIDS TO NAVIGATION	PLANE COORDINATES		LATITUDE	LONGITUDE
	X	Y		
LT. BUOY-7 (07/17)	798.132	1,477,162	28°23'47.82"	80°33'30.33"
LT. BUOY-8 (07/17)	798.504	1,477,567	28°23'51.82"	80°33'26.15"

ATLANTIC OCEAN



AIDS TO NAVIGATION	PLANE COORDINATES		LATITUDE	LONGITUDE
	X	Y		
LT. BUOY-9 (07/17)	795,626	1,479,294	28°24'09.02"	80°33'58.31"

- NOTES:
- REFER TO SURVEY NO. 17-202.
 - SEE SHEET NO.1 FOR SURVEY NOTES.
 - LAT/LONG GRID TICS ARE AT 10-SECOND INTERVALS.

