


AIDS TO NAVIGATION	PLANE COORDINATES		LATITUDE	LONGITUDE
	X	Y		
LT-09057 (117)	463.620	2909124	89°24'31.95"	81°54'47.9"

GRAPHIC SCALE
 100' 0 100' 200'
 NOTES:
 1. REFER TO SURVEY NO. 17-191.
 2. SEE SHEET NO. 1 FOR SURVEY NOTES.

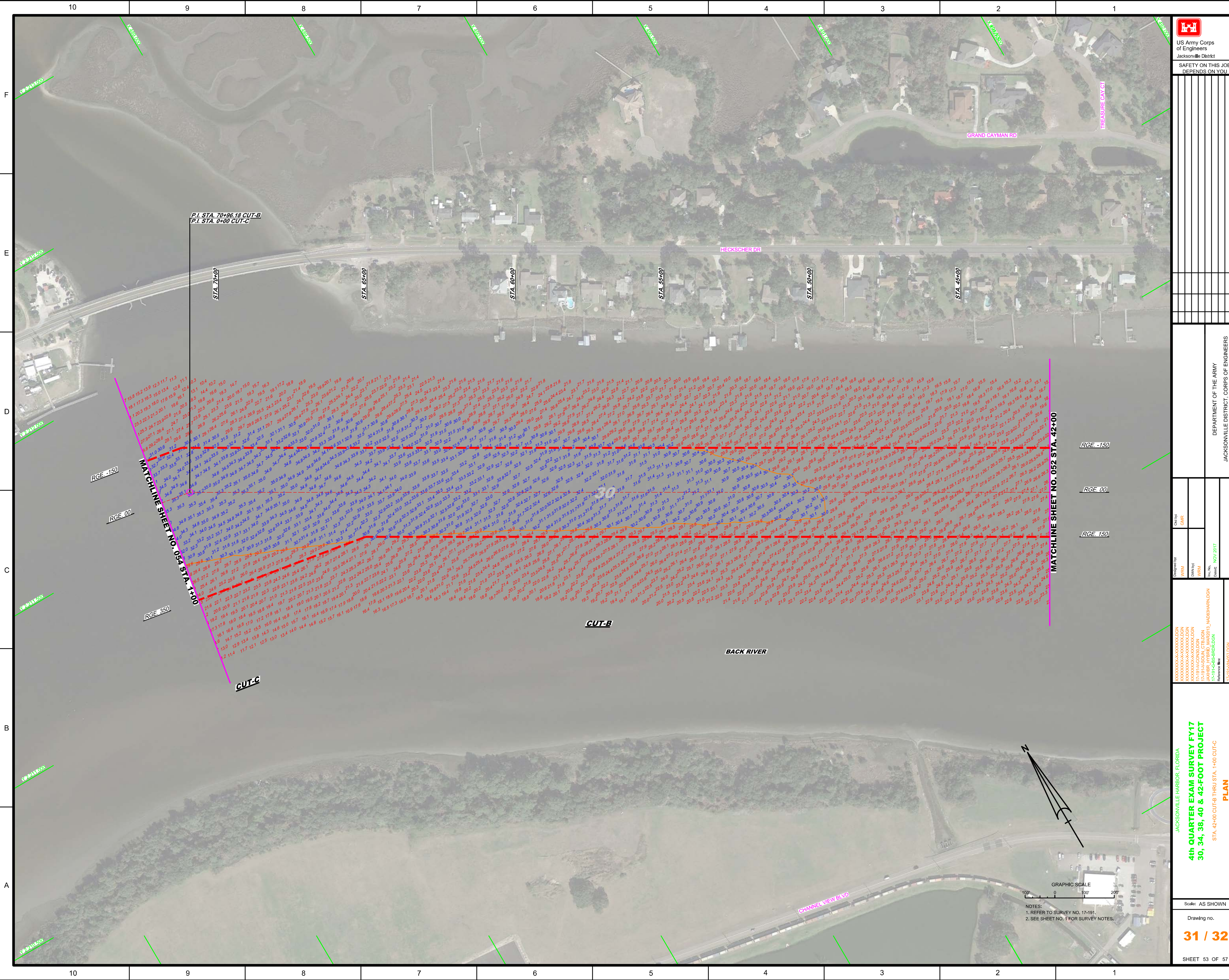



US Army Corps of Engineers
 Jacksonville District
 SAFETY ON THIS JOB
 DEPENDS ON YOU

DEPARTMENT OF THE ARMY
 JACKSONVILLE DISTRICT, CORPS OF ENGINEERS
 JACKSONVILLE, FLORIDA

4th QUARTER EXAM SURVEY FY17
 30, 34, 38, 40 & 42-FOOT PROJECT
 STA. 8+00 CUT-47 THRU STA. 10+00 CUT-49
PLAN

Scale: AS SHOWN
 Drawing no.
22 / 32
 SHEET 34 OF 57





 US Army Corps of Engineers
 Jacksonville District
 SAFETY ON THIS JOB
 DEPENDS ON YOU

DEPARTMENT OF THE ARMY
 JACKSONVILLE DISTRICT, CORPS OF ENGINEERS
 JACKSONVILLE, FLORIDA

Call by: GHR
 Designed by: WRM
 Drawn by: WRM
 Checked by: WRM
 Date: NOV 2017

JACKSONVILLE HARBOR, FLORIDA
4th QUARTER EXAM SURVEY FY17
30, 34, 38, 40 & 42-FOOT PROJECT
 STA. 42+00 CUT-B THRU STA. 1+00 CUT-C
PLAN

Scale: AS SHOWN
 Drawing no.
31 / 32
 SHEET 53 OF 57

GRAPHIC SCALE
 100' 0 100' 200'
 NOTES:
 1. REFER TO SURVEY NO. 17-191.
 2. SEE SHEET NO. 1 FOR SURVEY NOTES.



<p>US Army Corps of Engineers Jacksonville District</p>	
<p>SAFETY ON THIS JOB DEPENDS ON YOU</p>	
<p>DESIGNED BY: WRM</p>	<p>CHECKED BY: GHR</p>
<p>DRAWN BY: WRM</p>	<p>DATE: NOV 2017</p>
<p>PROJECT: JACKSONVILLE HARBOR, FLORIDA</p>	
<p>4th QUARTER EXAM SURVEY FY17 30, 34, 38, 40 & 42-FOOT PROJECT</p>	
<p>STA. 40+00 THRU STA. 70+00 CUT-G PLAN</p>	
<p>Scale: AS SHOWN</p>	
<p>Drawing no. 32 / 32</p>	
<p>SHEET 57 OF 57</p>	