

JOHNS PASS PINELLAS COUNTY, FLORIDA HYDROGRAPHIC EXAM SURVEY FY17 6, 8 AND 10-FOOT PROJECT

SURVEY NOTES

1. REFER TO SURVEY NO. 17-151.
 2. TIDAL REDUCTIONS WERE OBTAINED UTILIZING A REAL-TIME KINEMATIC (RTK) GPS AND REFERENCED TO MLLW UTILIZING A HYPACK KINEMATIC TIDE DATUM (KTD) MODEL. KTD FILE NAME: "SPC-FL-WEST-2010-12-07.KTD".
 3. ALL ELEVATIONS ARE BELOW THE CHART DATUM UNLESS PRECEDED BY A (+) SIGN.
 4. PLANE COORDINATES ARE BASED ON THE TRANSVERSE MERCATOR PROJECTION FOR THE WEST ZONE OF FLORIDA AND REFERENCED TO NORTH AMERICAN DATUM OF 1983 (NAD83).
 5. ALL STATIONING REFERS TO THE CENTERLINE OF THE CHANNEL.
 6. THIS SURVEY WAS PERFORMED USING REAL-TIME KINEMATIC (RTK) GPS POSITIONING WITH THE FOLLOWING REFERENCE BASE LOCATION:

REFERENCE BASE LOCATED AT "JP-101" (OPUS PID: BBCB34)
 7. DEPTHS DEPICTED BY THIS SURVEY ARE REFERENCED TO MLLW, TIDAL EPOCH 1983-2001, AS REPORTED BY THE NATIONAL OCEANIC AND ATMOSPHERIC ADMINISTRATION (NOAA). A MODIFIED VERSION OF NOAA'S VDATUM MODEL WAS USED TO CALIBRATE TO THE PUBLISHED MLLW HEIGHTS OF THE BENCH MARKS BELOW:

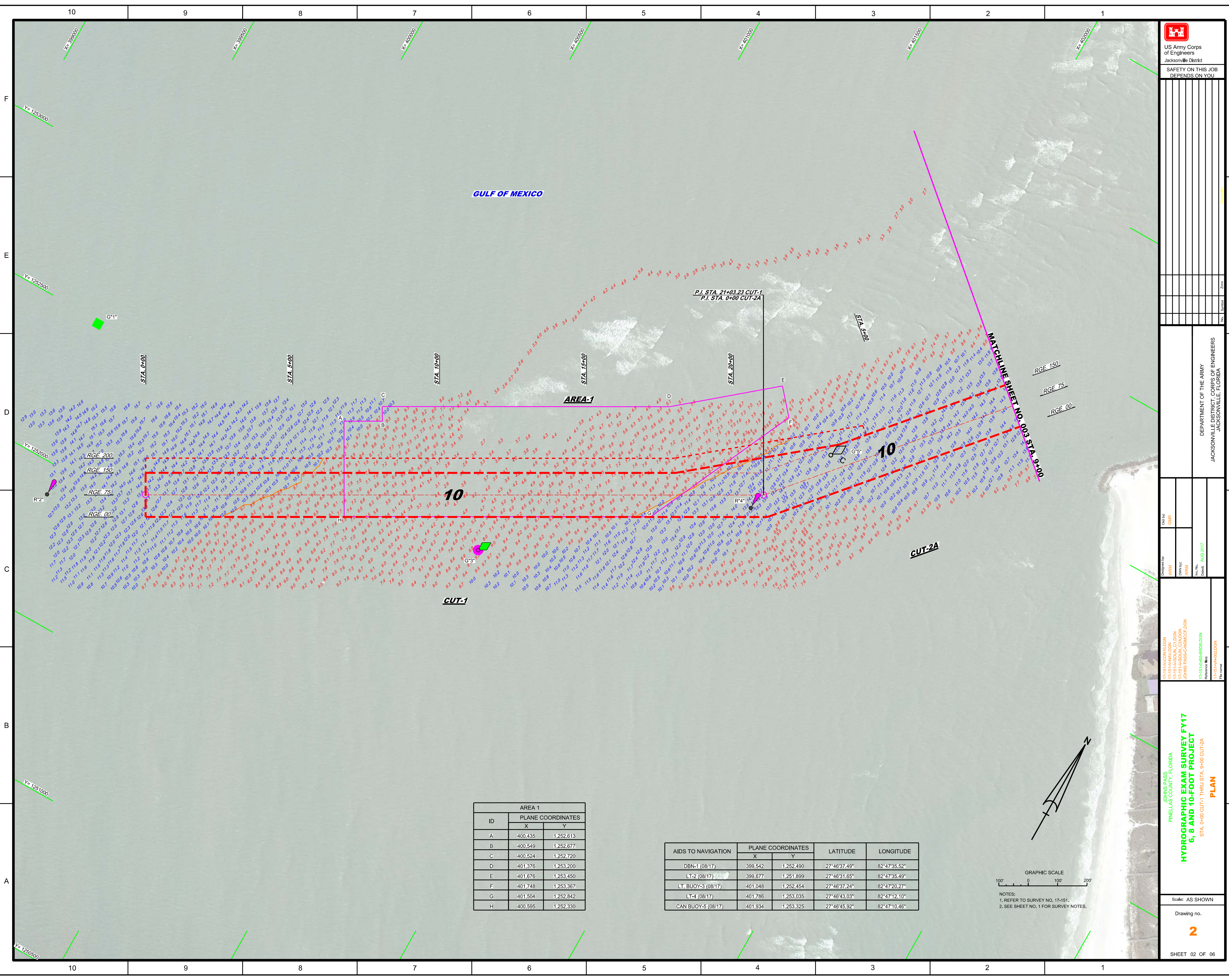
NGS BENCHMARK "MADERIA RM 3" USED FOR ALL CUTS (PID: AG5442)
 8. VERTICAL MEASUREMENTS WERE MADE USING AN EDGETECH 6205 COMBINED MULTI-BEAM AND SIDESCAN. ALL SOUNDINGS SHOWN ARE IN HIGH FREQUENCY.
- | VESSEL | DATE OF SURVEY | CUT |
|--------|----------------|-----------------|
| SB-44 | 01 AUG 2017 | CUT-1, AREA-2 |
| SB-44 | 02 AUG 2017 | CUTS 2-7 |
| SB-44 | 03 AUG 2017 | CUTS 1, 5, 6, 7 |
9. AIDS TO NAVIGATION WERE LOCATED DURING THIS SURVEY.
 10. THE INFORMATION DEPICTED ON THIS MAP REPRESENTS THE RESULTS OF SURVEYS MADE ON THE DATES INDICATED ABOVE AND CAN ONLY BE CONSIDERED AS INDICATING THE GENERAL CONDITIONS AT THAT TIME. THIS CHART IS SOLELY FOR THE DISTRIBUTION OF AVAILABLE DEPTHS AT THE TIME OF THE SURVEY.
 11. SURVEY ACCURACY PERFORMANCE STANDARDS, QUALITY CONTROL, AND QUALITY ASSURANCE REQUIREMENTS WERE FOLLOWED DURING THIS SURVEY IN ACCORDANCE WITH USACE EM 1110-2-1003, HYDROGRAPHIC SURVEYING, 30 NOV 13.

LEGEND	
▲	MONUMENT
⚓	LIGHTED BEACON
■	GREEN DAYBEACON
▲	RED DAYBEACON
⚓	RED LIGHTED BUOY
⚓	GREEN LIGHTED BUOY
⚓	CAN BUOY
⚓	NUN BUOY
⚓	TIDE STAFF
8	PROJECT DEPTH

US Army Corps of Engineers
Jacksonville District
SAFETY ON THIS JOB
DEPENDS ON YOU

<p>DESIGNED BY: WRM DRAWN BY: WRM CHECKED BY: WRM DATE: AUG 2017</p>	<p>DEPARTMENT OF THE ARMY JACKSONVILLE DISTRICT, CORPS OF ENGINEERS JACKSONVILLE, FLORIDA</p>
<p>FILE NAME: 17-151-INDEX.DGN PROJECT: JOHN'S PASS-CHINA/00000000.DGN DRAWING: 17-151-INDEX.DGN</p>	<p>REFERENCE FILE: 17-151-INDEX.DGN PROJECT: JOHN'S PASS-CHINA/00000000.DGN DRAWING: 17-151-INDEX.DGN</p>
<p>JOHNS PASS PINELLAS COUNTY, FLORIDA HYDROGRAPHIC EXAM SURVEY FY17 6, 8 AND 10-FOOT PROJECT INDEX, LOCATION AND VICINITY MAP</p>	
<p>Scale: AS SHOWN</p>	
<p>Drawing no. 1</p>	
<p>SHEET 01 OF 06</p>	

GULF OF MEXICO



AREA 1		
ID	PLANE COORDINATES	
	X	Y
A	400,435	1,252,613
B	400,549	1,252,677
C	400,524	1,252,720
D	401,376	1,253,200
E	401,676	1,253,450
F	401,748	1,253,367
G	401,504	1,252,842
H	400,595	1,252,330

AIDS TO NAVIGATION	PLANE COORDINATES		LATITUDE	LONGITUDE
	X	Y		
DBN-1 (08/17)	399,542	1,252,490	27°46'37.49"	82°47'35.52"
LT-2 (08/17)	399,677	1,251,899	27°46'31.65"	82°47'35.49"
LT, BUOY-3 (08/17)	401,048	1,252,454	27°46'37.24"	82°47'20.27"
LT-4 (08/17)	401,786	1,253,035	27°46'43.03"	82°47'12.10"
CAN BUOY-5 (08/17)	401,934	1,253,325	27°46'45.92"	82°47'10.46"

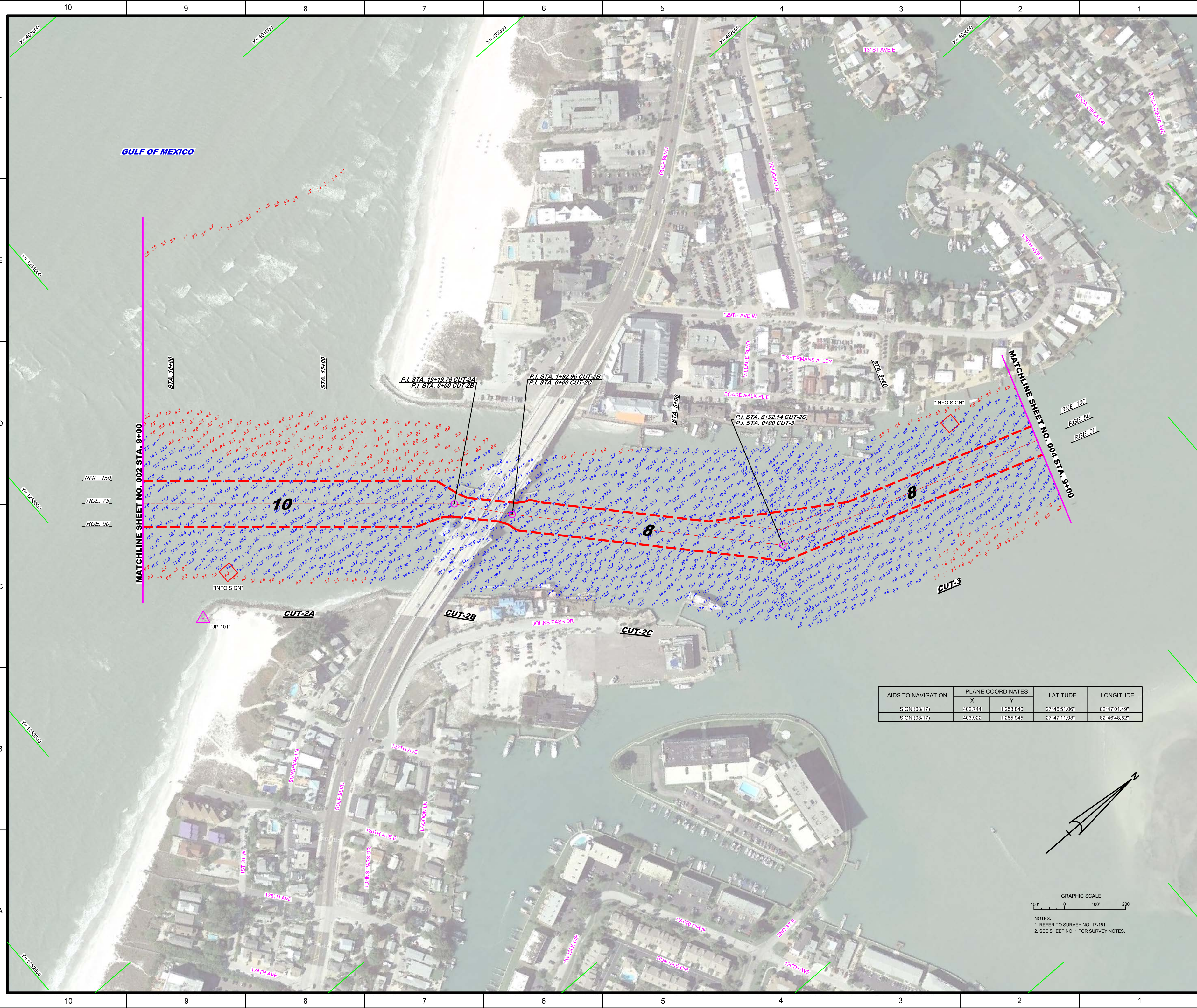
GRAPHIC SCALE
0 100 200
NOTES:
1. REFER TO SURVEY NO. 17-151.
2. SEE SHEET NO. 1 FOR SURVEY NOTES.

DEPARTMENT OF THE ARMY
JACKSONVILLE DISTRICT, CORPS OF ENGINEERS
JACKSONVILLE, FLORIDA

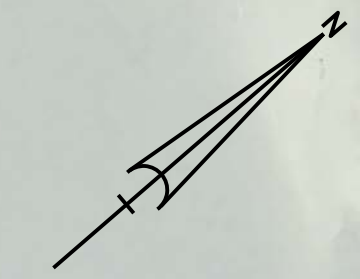
Designed by: WRM
Checked by: GHR
Drawn by: WRM
Reviewed by: WRM
Date: AUG 2017

JOHNS PASS
PINELAS COUNTY, FLORIDA
**HYDROGRAPHIC EXAM SURVEY FY17
6, 8 AND 10-FOOT PROJECT**
STA. 0+00 CUT-1 THRU STA. 9+00 CUT-2A
PLAN

Scale: AS SHOWN
Drawing no. **2**
SHEET 02 OF 06

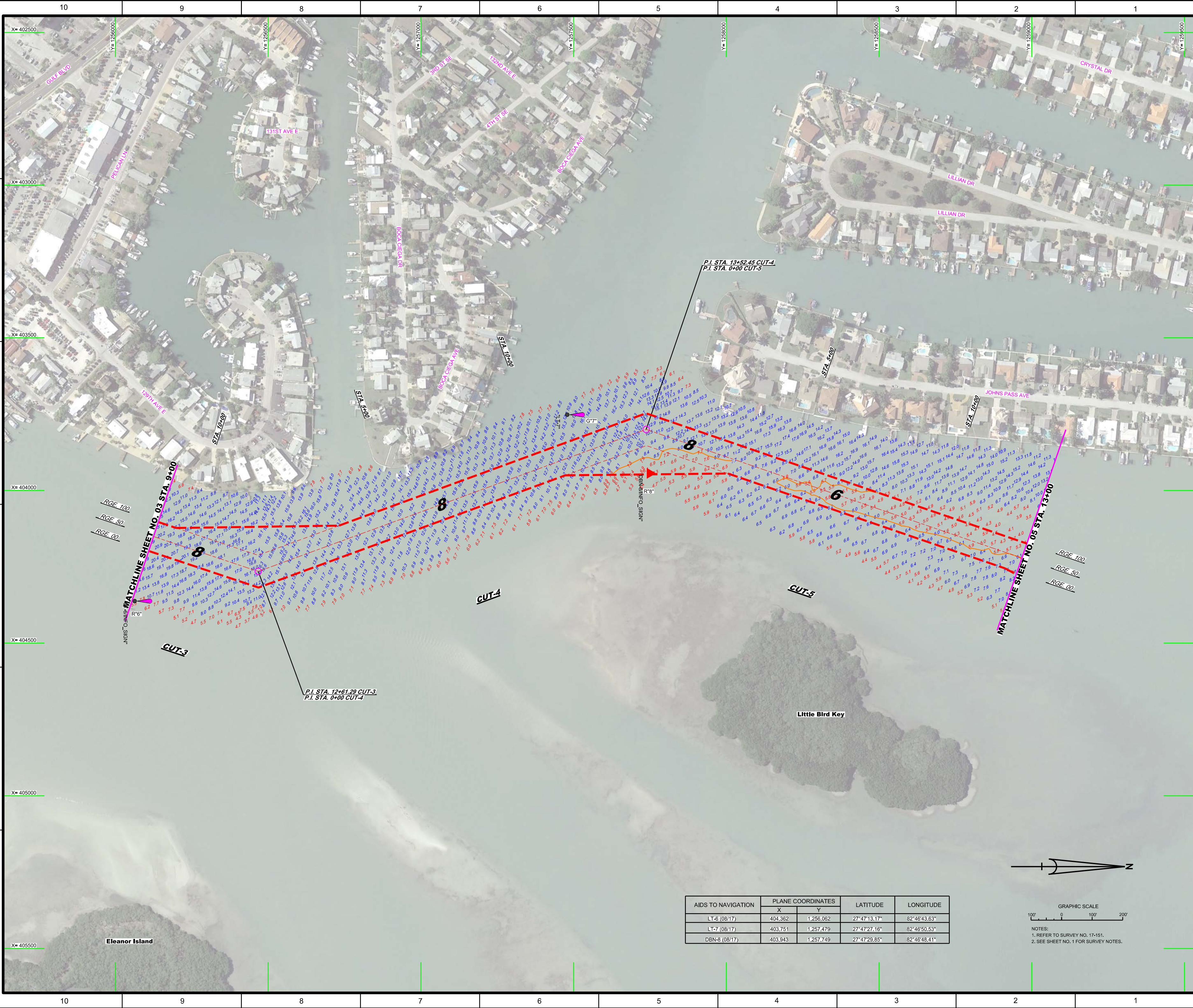


AIDS TO NAVIGATION	PLANE COORDINATES		LATITUDE	LONGITUDE
	X	Y		
SIGN (08/17)	402,744	1,253,840	27°46'51.06"	82°47'01.49"
SIGN (08/17)	403,922	1,255,945	27°47'11.98"	82°46'48.52"

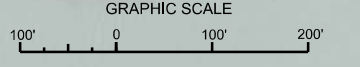


GRAPHIC SCALE
 100' 0 100' 200'

NOTES:
 1. REFER TO SURVEY NO. 17-151.
 2. SEE SHEET NO. 1 FOR SURVEY NOTES.



AIDS TO NAVIGATION	PLANE COORDINATES		LATITUDE	LONGITUDE
	X	Y		
LT-6 (08/17)	404,362	1,256,062	27°47'13.17"	82°46'43.63"
LT-7 (08/17)	403,751	1,257,479	27°47'27.16"	82°46'50.53"
DBN-8 (08/17)	403,943	1,257,749	27°47'29.85"	82°46'48.41"



NOTES:
 1. REFER TO SURVEY NO. 17-151.
 2. SEE SHEET NO. 1 FOR SURVEY NOTES.

US Army Corps of Engineers
 Jacksonville District

SAFETY ON THIS JOB DEPENDS ON YOU

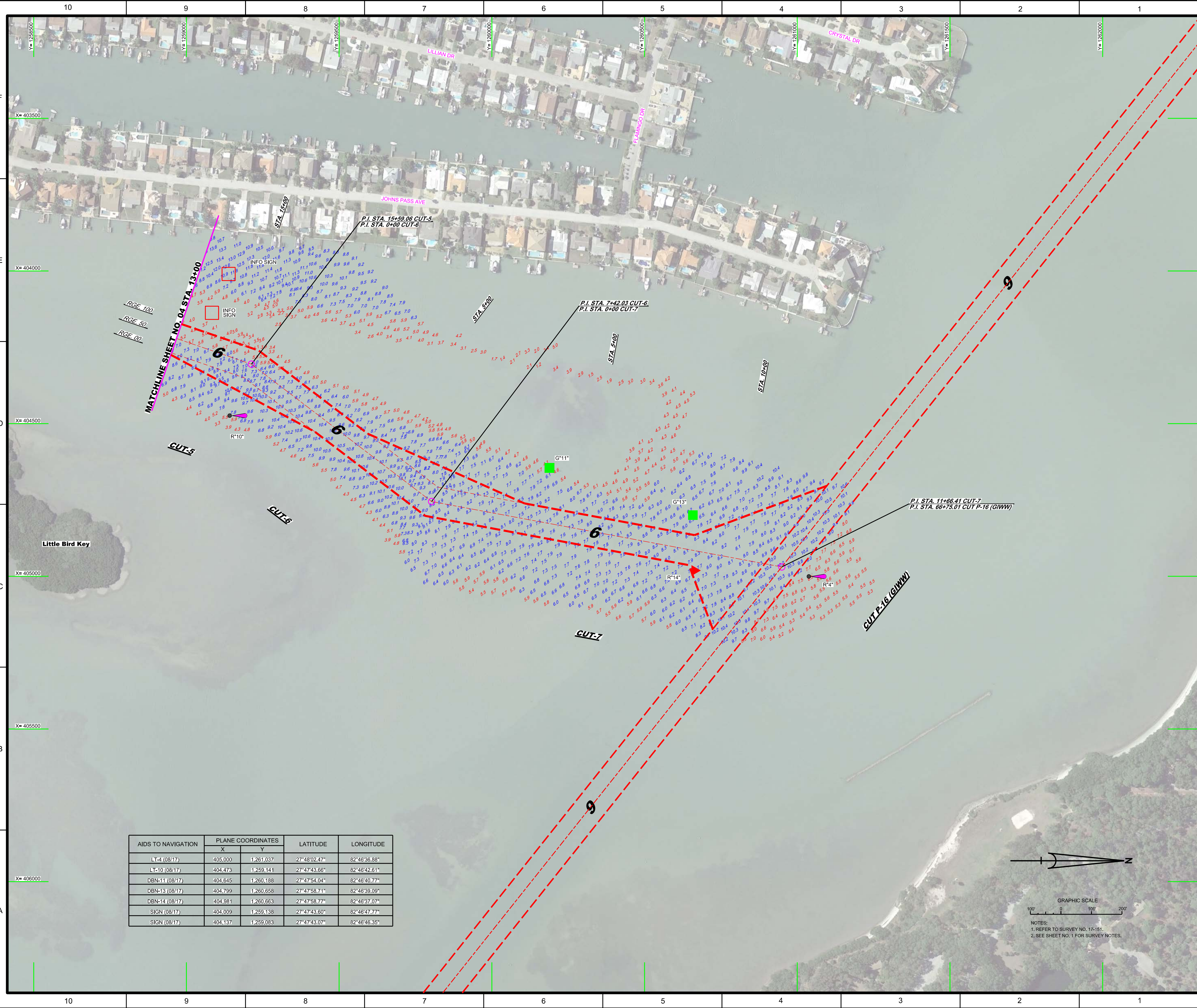
DEPARTMENT OF THE ARMY
 JACKSONVILLE DISTRICT, CORPS OF ENGINEERS
 JACKSONVILLE, FLORIDA

HYDROGRAPHIC EXAM SURVEY FY17
6, 8 AND 10-FOOT PROJECT
 STA. 9+00 CUT-3 THRU STA. 13+00 CUT-5
PLAN

Scale: AS SHOWN

Drawing no. **4**

SHEET 04 OF 06



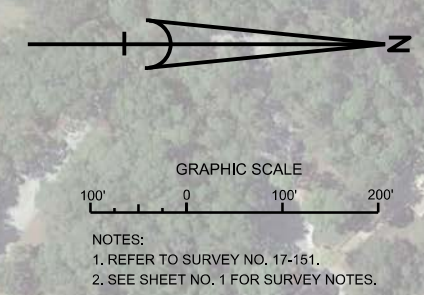
10
9
8
7
6
5
4
3
2
1

F
E
D
C
B
A

X=403500
X=404000
X=404500
X=405000
X=405500
X=406000

Y=1269500
Y=1269000
Y=1268500
Y=1268000
Y=1267500
Y=1267000

AIDS TO NAVIGATION	PLANE COORDINATES		LATITUDE	LONGITUDE
	X	Y		
LT-4 (08/17)	405,000	1,261,037	27°48'02.47"	82°46'36.88"
LT-10 (08/17)	404,473	1,259,141	27°47'43.66"	82°46'42.61"
DBN-11 (08/17)	404,645	1,260,188	27°47'54.04"	82°46'40.77"
DBN-13 (08/17)	404,799	1,260,658	27°47'58.71"	82°46'39.09"
DBN-14 (08/17)	404,981	1,260,663	27°47'58.77"	82°46'37.07"
SIGN (08/17)	404,009	1,259,138	27°47'43.60"	82°46'47.77"
SIGN (08/17)	404,137	1,259,083	27°47'43.07"	82°46'46.35"



US Army Corps of Engineers
Jacksonville District
SAFETY ON THIS JOB DEPENDS ON YOU

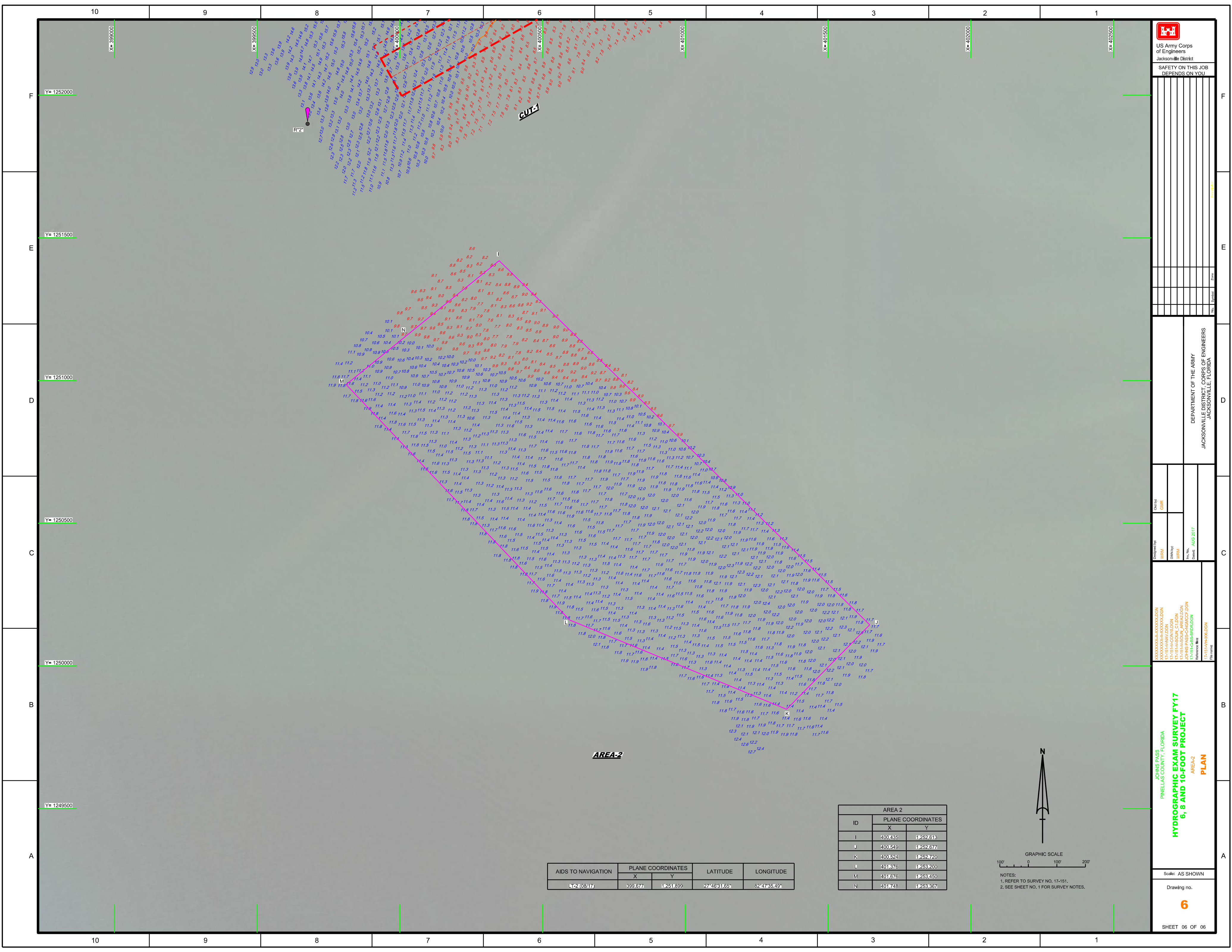
DEPARTMENT OF THE ARMY
JACKSONVILLE DISTRICT, CORPS OF ENGINEERS
JACKSONVILLE, FLORIDA


Call by: GHR
Designed by: WRM
Drawn by: WRM
In. No.: WRM
Date: AUG 2017

17-151-A-000-000
17-151-A-000-001
17-151-A-000-002
17-151-A-000-003
17-151-A-000-004
17-151-A-000-005
17-151-A-000-006
17-151-A-000-007
17-151-A-000-008
17-151-A-000-009
17-151-A-000-010
17-151-A-000-011
17-151-A-000-012
17-151-A-000-013
17-151-A-000-014
17-151-A-000-015
17-151-A-000-016
17-151-A-000-017
17-151-A-000-018
17-151-A-000-019
17-151-A-000-020

JOHNS PASS
PINELAS COUNTY, FLORIDA
**HYDROGRAPHIC EXAM SURVEY FY17
6, 8 AND 10-FOOT PROJECT**
STA. 13+00 CUT-5 THRU STA. 11+66.41 CUT-7
PLAN

Scale: AS SHOWN
Drawing no. **5**
SHEET 05 OF 06




 US Army Corps of Engineers
 Jacksonville District
 SAFETY ON THIS JOB
 DEPENDS ON YOU

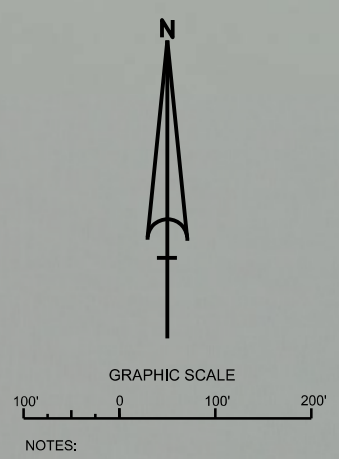
DEPARTMENT OF THE ARMY
 JACKSONVILLE DISTRICT, CORPS OF ENGINEERS
 JACKSONVILLE, FLORIDA

Call by: GHR
 Designed by: WRM
 Drawn by: WRM
 File Name: 17-15-PASS-CRMBGCT.DGN
 Date: AUG 2017
 Reference File: 17-15-PH00L.DGN
 File Name:

JOHN'S PASS
 PINELLAS COUNTY, FLORIDA
HYDROGRAPHIC EXAM SURVEY FY17
6, 8 AND 10-FOOT PROJECT
 AREA-2
PLAN
 Scale: AS SHOWN
 Drawing no.
6
 SHEET 06 OF 06

AIDS TO NAVIGATION	PLANE COORDINATES		LATITUDE	LONGITUDE
	X	Y		
L-2 (08/17)	399.677	1251.899	27°46'31.65"	82°47'35.49"

AREA 2		
ID	PLANE COORDINATES	
	X	Y
I	400.835	1252.613
J	400.549	1252.677
K	400.524	1252.720
L	401.376	1253.200
M	401.676	1253.450
N	401.748	1253.357



NOTES:
 1. REFER TO SURVEY NO. 17-151.
 2. SEE SHEET NO. 1 FOR SURVEY NOTES.