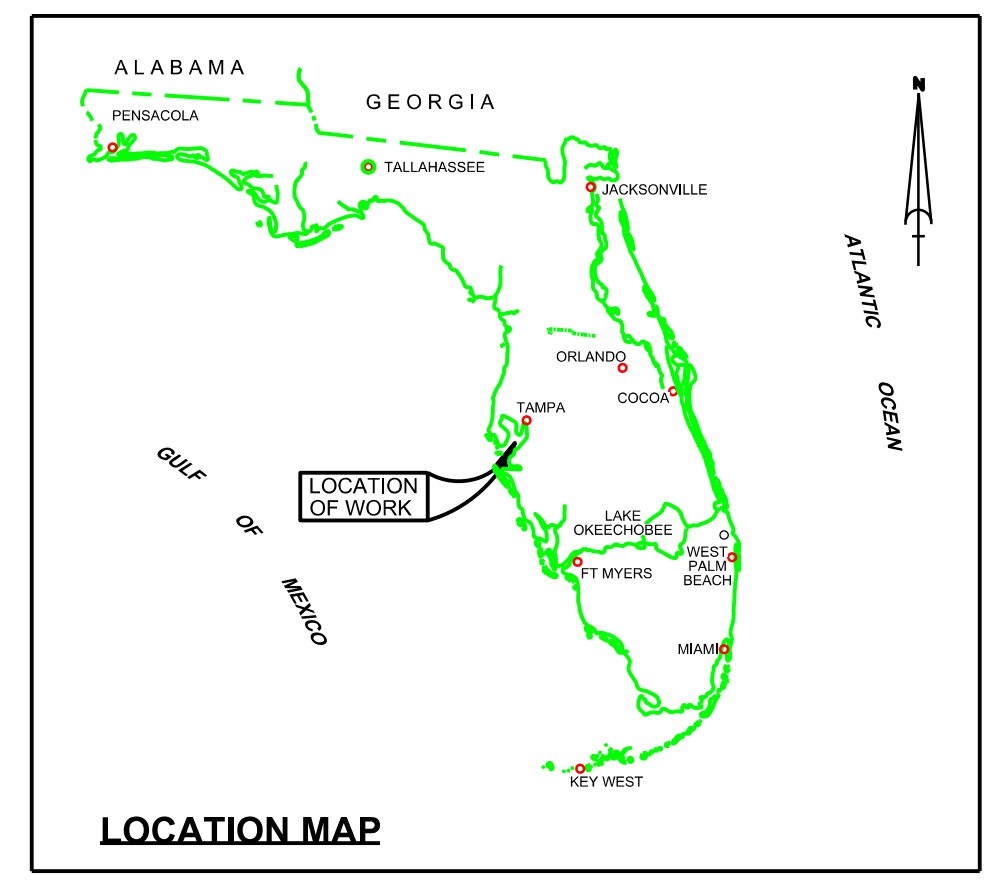




SHEET INDEX



TAMPA HARBOR CUTS F AND G (TB) AND GADSDEN POINT CUT HILLSBOROUGH COUNTY, FLORIDA EXAMINATION SURVEY FY17 34 AND 43-FOOT PROJECT

SURVEY ZONE	CUTS
4	CUT-F, CUT-G, GADSDEN POINT CUT
5	CUT-J, CUT-J2, CUT-K
6	CUT-A (HB), CUT-C (HB), CUT-D (HB)
7	LOWER & UPPER SPARKMAN, YBOR CH, SEDDON CH, PORT SUTTON CH, PORT SUTTON T.B., PORT SUTTON TERMINAL CH, EAST BAY CH, EAST BAY EXTENSIONS 1 & 2

LEGEND	
	MONUMENT
	LIGHTED BEACON
	GREEN DAY BEACON
	RED DAY BEACON
	RED LIGHTED BUOY
	GREEN LIGHTED BUOY
	CAN BUOY
	NUN BUOY
	TIDE STAFF
	PROJECT DEPTH

SURVEY NOTES

- REFER TO SURVEY NO. 17-138.
- ELEVATIONS ARE IN FEET AND TENTHS AND REFER TO THE NOAA REPORTED MLLW TIDAL DATUM RELATIVE TO THE 1983-2001 TIDAL EPOCH.
NOAA TIDAL STATION 872-6520, ST. PETERSBURG, TAMPA BAY, FLORIDA
NOAA TIDAL STATION 872-6562, BIG BEND, TAMPA BAY, FLORIDA (SUPERSEDED)
- TIDAL REDUCTIONS WERE OBTAINED UTILIZING A REAL-TIME KINEMATIC (RTK) GPS AND REFERENCED TO MLLW UTILIZING A HYPACK KINEMATIC TIDE DATUM (KTD) MODEL NAMED "SPC-FL-WEST-2010-12-07.KTD"
- ALL ELEVATIONS ARE BELOW THE CHART DATUM UNLESS PRECEDED BY A (+) SIGN.
- PLANE COORDINATES ARE BASED ON THE TRANSVERSE MERCATOR PROJECTION FOR THE WEST ZONE OF FLORIDA AND REFERENCED TO NORTH AMERICAN DATUM OF 1983 (NAD83).
- ALL STATIONING REFERS TO THE CENTERLINE OF THE CHANNEL.
- THIS SURVEY WAS PERFORMED USING REAL-TIME KINEMATIC (RTK) GPS POSITIONING WITH THE FOLLOWING REFERENCE BASE LOCATIONS:
REFERENCE BASE LOCATED AT "DILLMAN" (OPUS PID: BBDC48)
REFERENCE BASE LOCATED AT "6562 B" (OPUS PID: AG7604)
TIDE STAFF LOCATED FROM "EDD 60" (OPUS PID: AG5298)
TIDE STAFF LOCATED FROM "6562 B" (OPUS PID: AG7604)
- VERTICAL MEASUREMENTS WERE MADE USING A R2SONIC 2024 MULTI-BEAM TRANSDUCER OPERATING AT 240 KHZ. SOUNDINGS SHOWN ARE IN HIGH FREQUENCY.
- VESSEL
- DATE OF SURVEY
- CUT
- SV JACKSONVILLE 21-22 AUG 2017 CUT-F
- SV JACKSONVILLE 23-24 AUG 2017 CUT-G
- SV JACKSONVILLE 29-30 AUG 2017 GADSDEN PT CUT
- AIDS TO NAVIGATION WERE LOCATED DURING THIS SURVEY.
- THE INFORMATION DEPICTED ON THIS MAP REPRESENTS THE RESULTS OF SURVEYS MADE ON THE DATES INDICATED ABOVE AND CAN ONLY BE CONSIDERED AS INDICATING THE GENERAL CONDITIONS AT THAT TIME. THIS CHART IS SOLELY FOR THE DISTRIBUTION OF AVAILABLE DEPTHS AT THE TIME OF THE SURVEY.
- SURVEY ACCURACY PERFORMANCE STANDARDS, QUALITY CONTROL, AND QUALITY ASSURANCE REQUIREMENTS WERE FOLLOWED DURING THIS SURVEY IN ACCORDANCE WITH USACE EM 1110-2-1003, HYDROGRAPHIC SURVEYING, 30 NOV 2013.

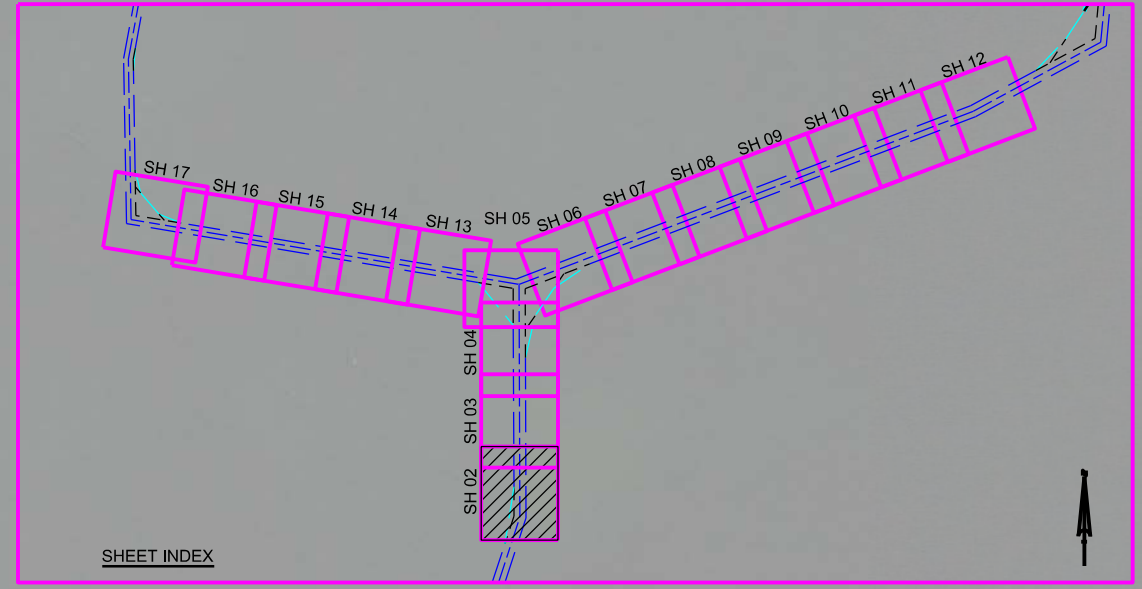
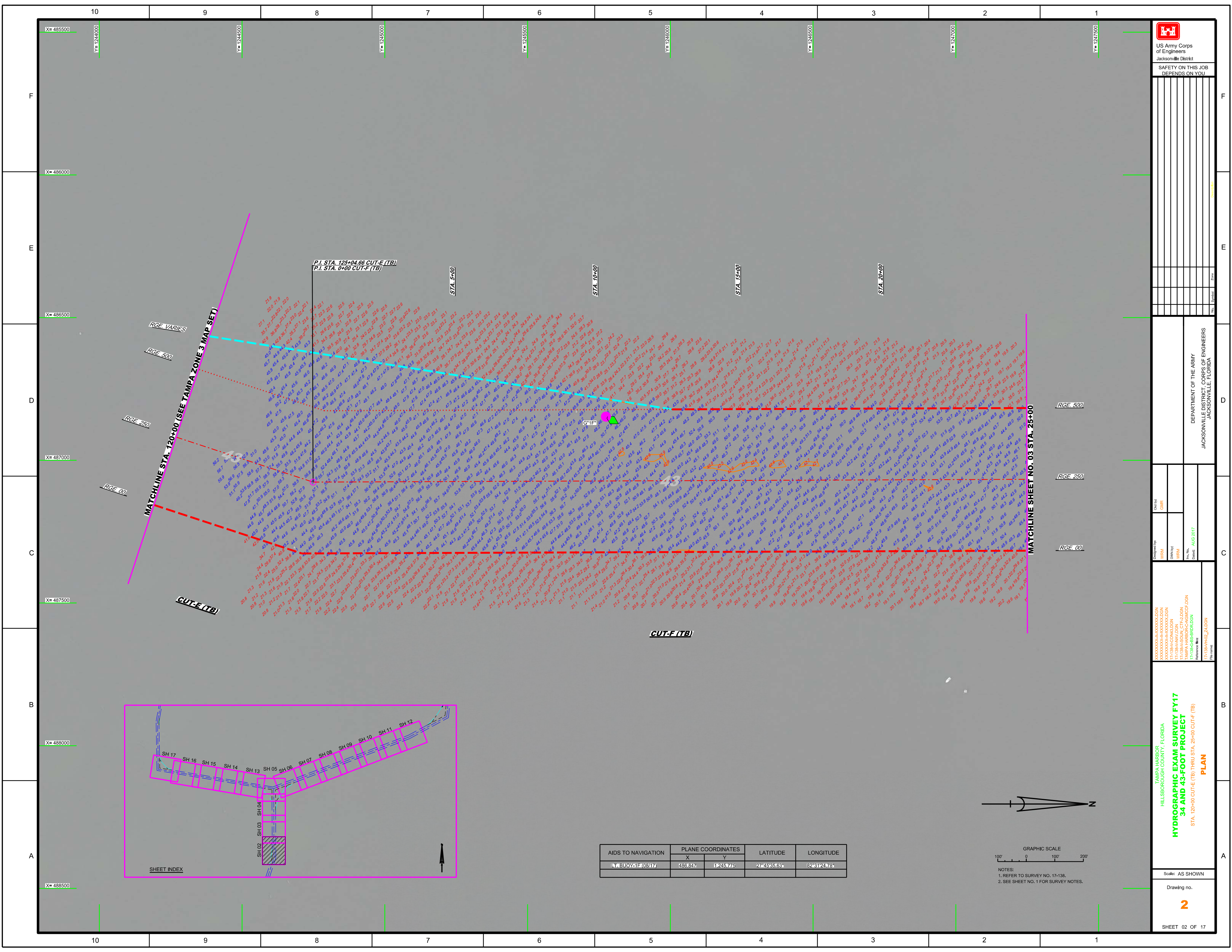
US Army Corps of Engineers
Jacksonville District
SAFETY ON THIS JOB DEPENDS ON YOU

Checked by:	GHM	Designed by:	WRM	Drawn by:	WRM	File No.:	17-138-0101_Z4.DGN	Scale:	AS SHOWN
Drawn by:	WRM	Checked by:	WRM	File No.:	17-138-0101_Z4.DGN	Scale:	AS SHOWN	Drawing no.	1
Drawn by:	WRM	Checked by:	WRM	File No.:	17-138-0101_Z4.DGN	Scale:	AS SHOWN	Drawing no.	1
Drawn by:	WRM	Checked by:	WRM	File No.:	17-138-0101_Z4.DGN	Scale:	AS SHOWN	Drawing no.	1

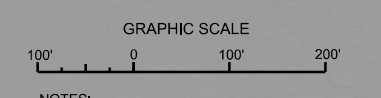
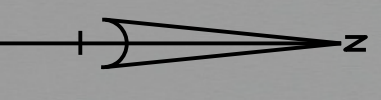
TAMPA HARBOR
HILLSBOROUGH COUNTY, FLORIDA
**HYDROGRAPHIC EXAM SURVEY FY17
34 AND 43-FOOT PROJECT**
INDEX, LOCATION AND VICINITY MAP

DEPARTMENT OF THE ARMY
JACKSONVILLE DISTRICT, CORPS OF ENGINEERS
JACKSONVILLE, FLORIDA

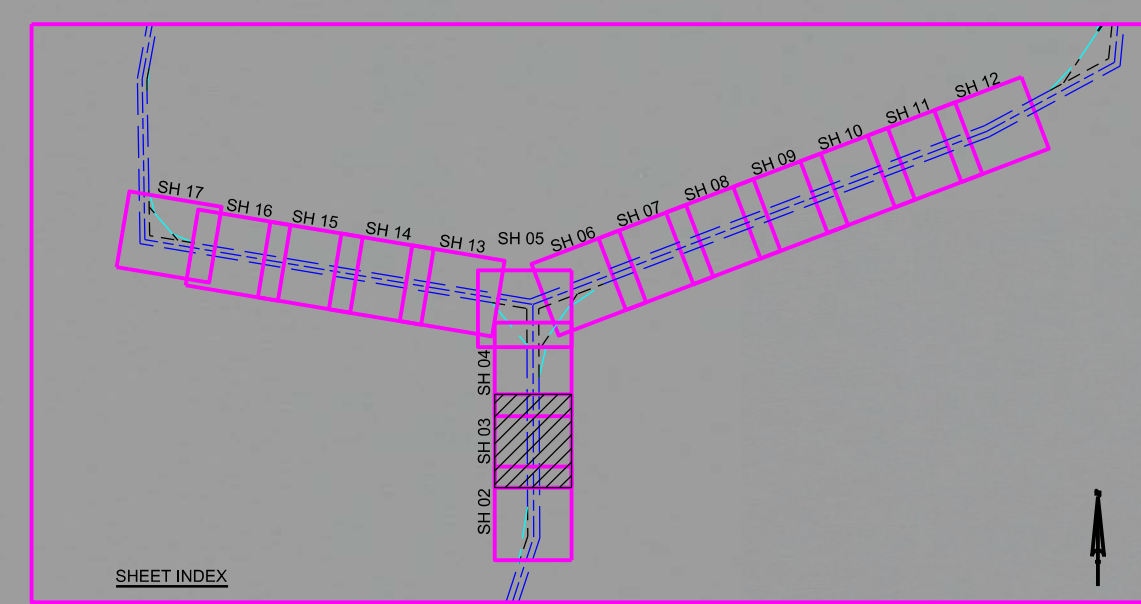
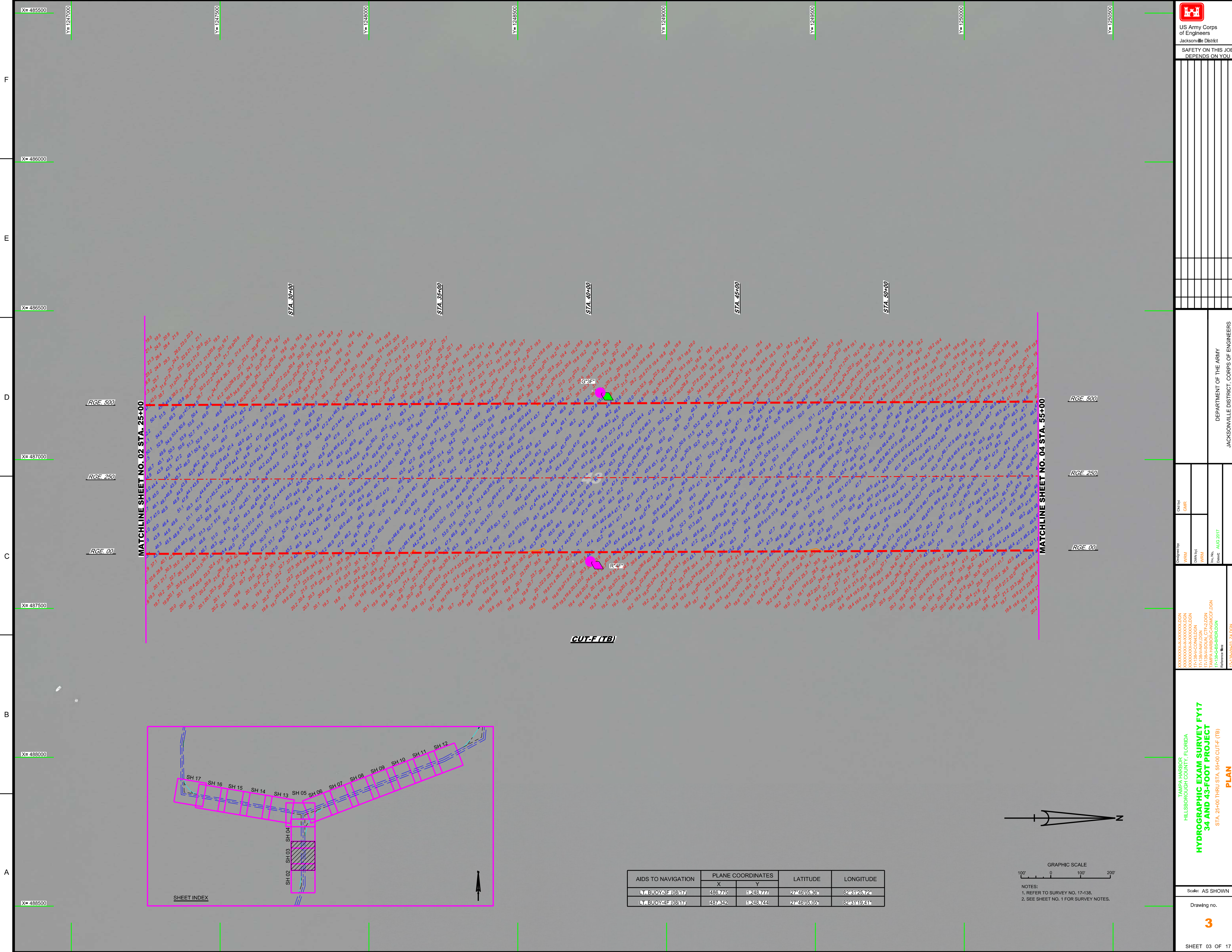
SHEET 01 OF 17



AIDS TO NAVIGATION	PLANE COORDINATES		LATITUDE	LONGITUDE
	X	Y		
LT. BUOY 11E (08/17)	486.847	1245.775	27°45'55.63"	82°31'24.78"

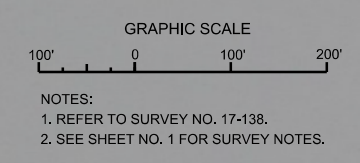


NOTES:
1. REFER TO SURVEY NO. 17-138.
2. SEE SHEET NO. 1 FOR SURVEY NOTES.

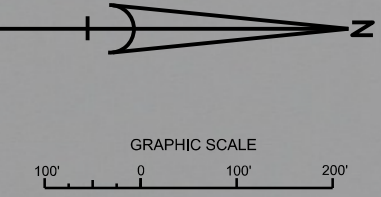
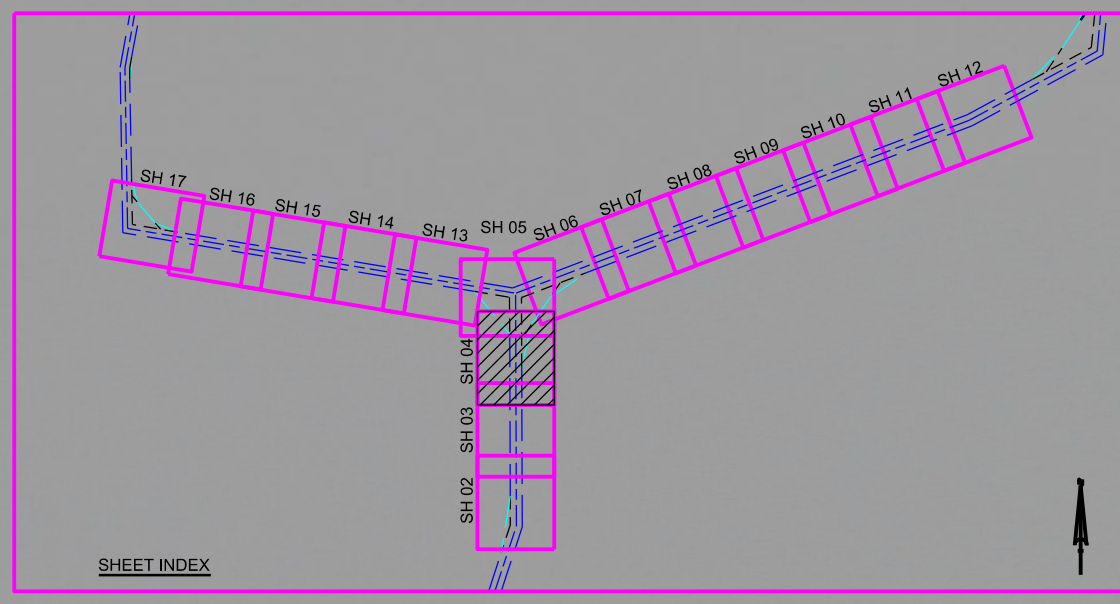
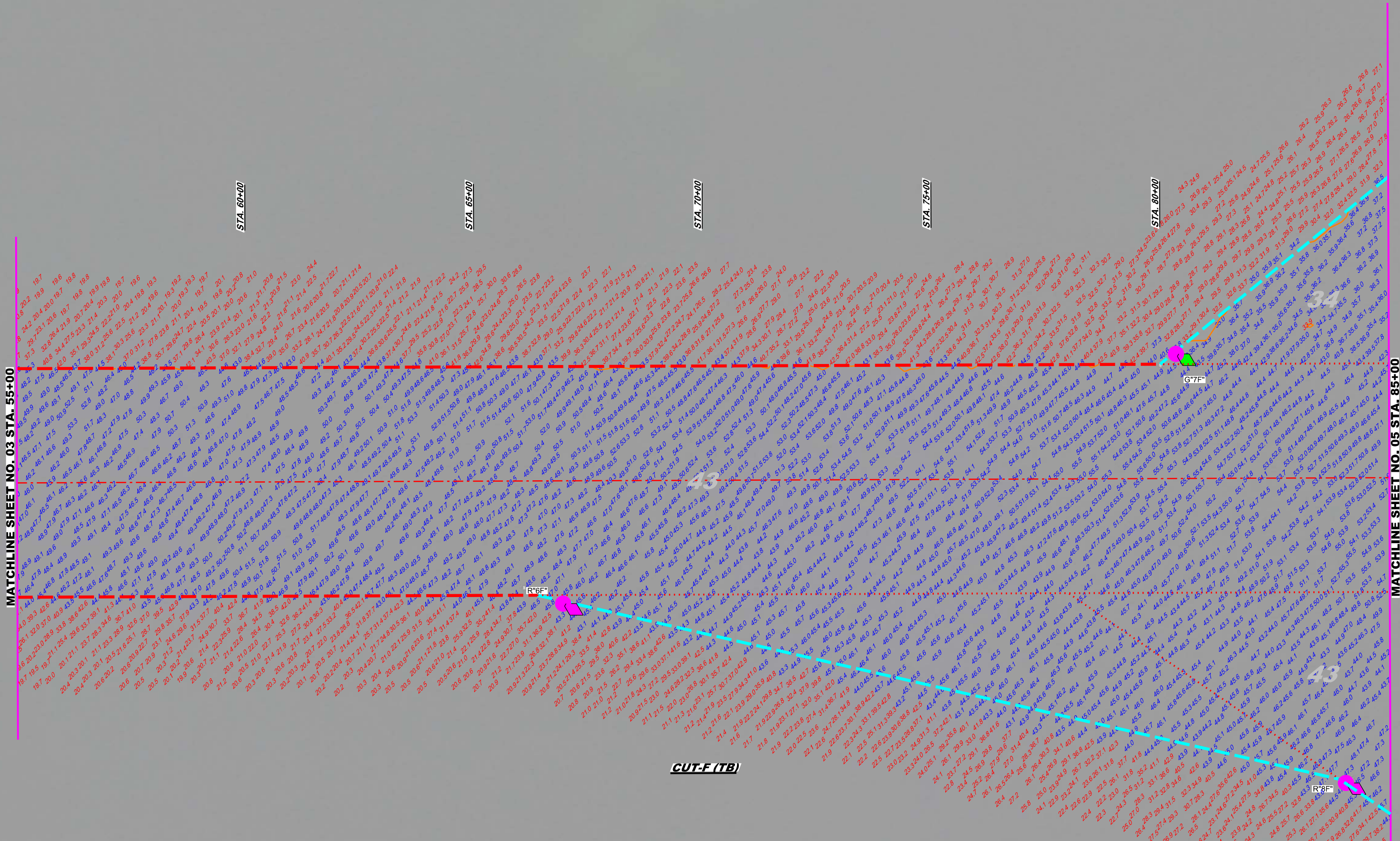


CUT-F (TB)

AIDS TO NAVIGATION	PLANE COORDINATES		LATITUDE	LONGITUDE
	X	Y		
LT BUOY 3E (0817)	486775	1248777	27°48'05.36"	82°31'25.72"
LT BUOY 4F (0817)	487342	1248744	27°48'05.05"	82°31'19.41"



AIDS TO NAVIGATION	PLANE COORDINATES		LATITUDE	LONGITUDE
	X	Y		
LT BUOY 57F (0847)	487.319	1251443	27463176	82311979
LT BUOY 57E (0847)	486.776	1252782	27464502	82312594
LT BUOY 58F (0847)	487.741	1253154	27464874	82311551



NOTES:
1. REFER TO SURVEY NO. 17-138.
2. SEE SHEET NO. 1 FOR SURVEY NOTES.

DEPARTMENT OF THE ARMY
JACKSONVILLE DISTRICT, CORPS OF ENGINEERS
JACKSONVILLE, FLORIDA

Drawn by: **VRM**
Checked by: **GHR**

Scale: AS SHOWN

Drawing no. **4**

SHEET 04 OF 17

TAMPA HARBOR
HILLSBOROUGH COUNTY, FLORIDA
HYDROGRAPHIC EXAM SURVEY FY17
34 AND 43-FOOT PROJECT
STA. 55+00 THRU STA. 85+00 CUT-F (TB)
PLAN

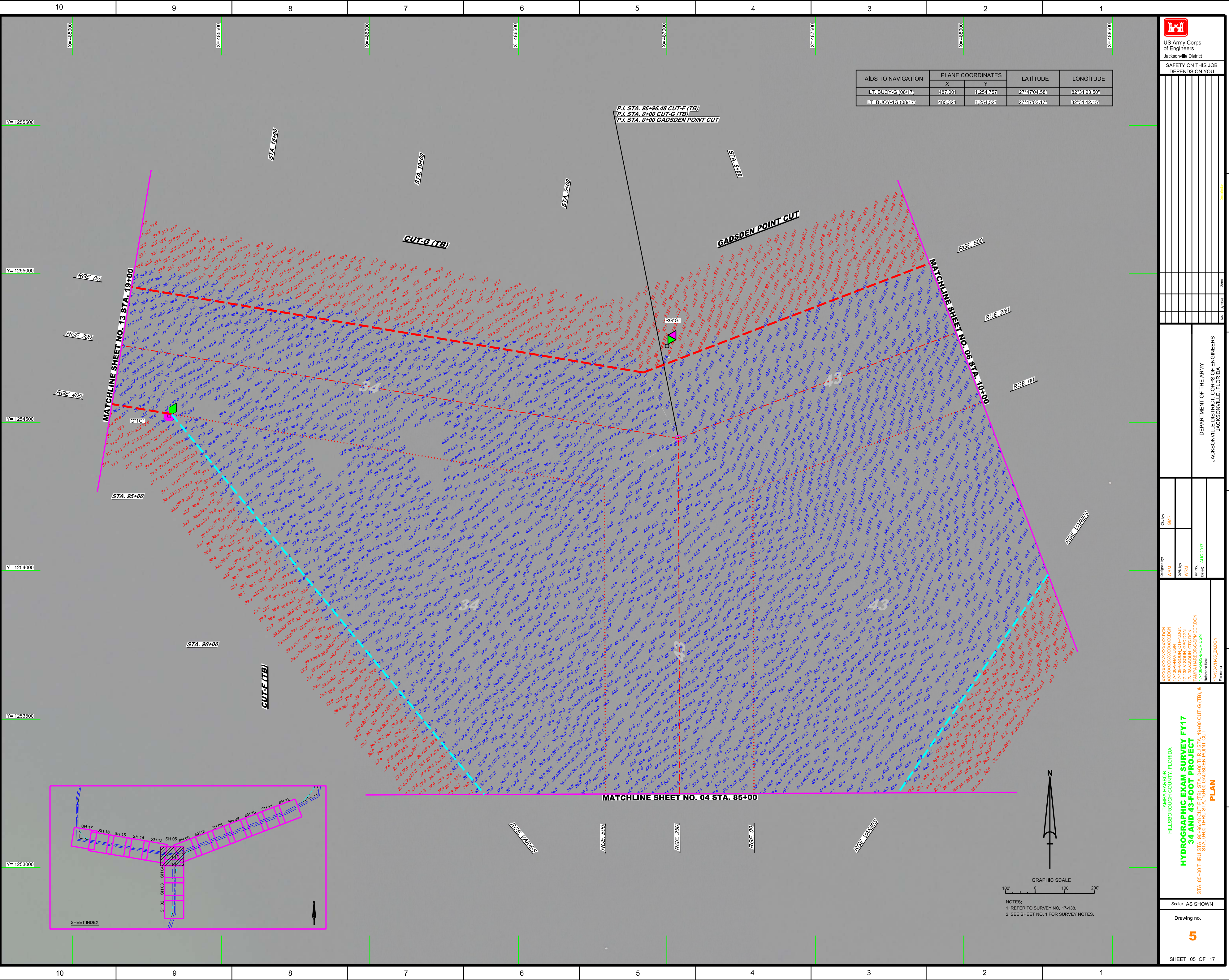
Reference File: 17-138-PRJ_24.DGN



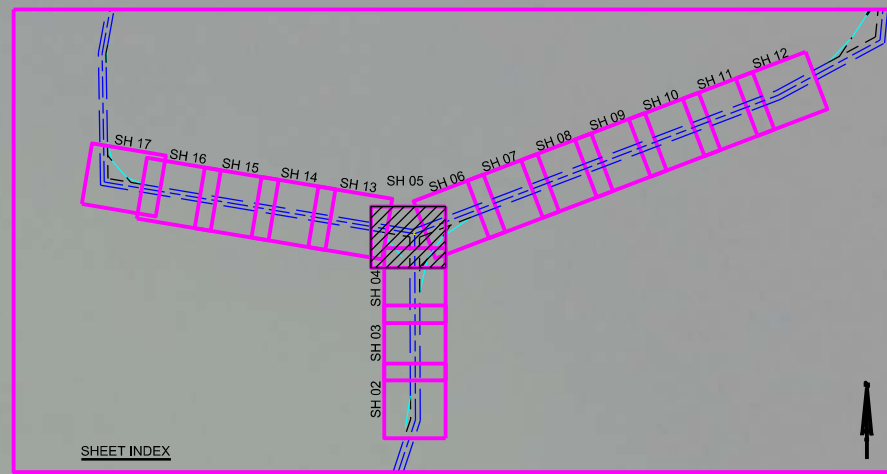
US Army Corps of Engineers
Jacksonville District

SAFETY ON THIS JOB
DEPENDS ON YOU

AIDS TO NAVIGATION	PLANE COORDINATES		LATITUDE	LONGITUDE
	X	Y		
11 BUOY-G (08/17)	487,001	1254,757	27°47'04.58"	82°31'28.50"
12 BUOY-G (08/17)	485,824	1254,524	27°47'02.47"	82°31'24.55"



F
E
D
C
B
A



GRAPHIC SCALE
100' 0 100' 200'

NOTES:
1. REFER TO SURVEY NO. 17-138.
2. SEE SHEET NO. 1 FOR SURVEY NOTES.

DEPARTMENT OF THE ARMY
JACKSONVILLE DISTRICT, CORPS OF ENGINEERS
JACKSONVILLE, FLORIDA

Checked By:	GHR
Designed By:	WRM
Drawn By:	WRM
Scale:	AUG 2017
Reference File:	17-138-PRG-24.DGN

TAMPA HARBOR
HILLSBOROUGH COUNTY, FLORIDA
HYDROGRAPHIC EXAM SURVEY FY17
34 AND 43-FOOT PROJECT
STA. 85+00 THRU STA. 96+96.48 CUT-F (TB) & STA. 0+00 THRU STA. 105+00 CUT-G (TB) & GADSDEN POINT CUT

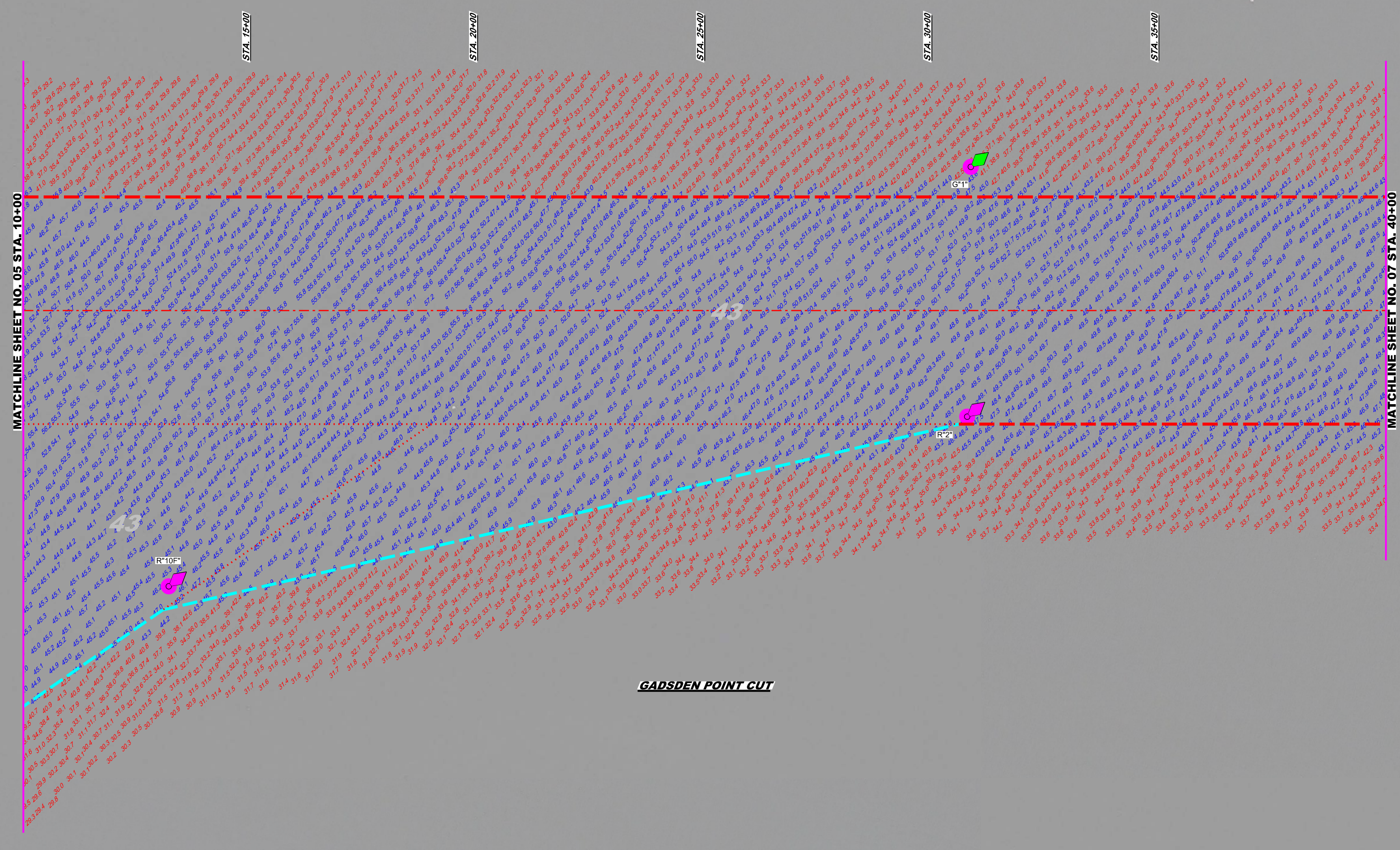
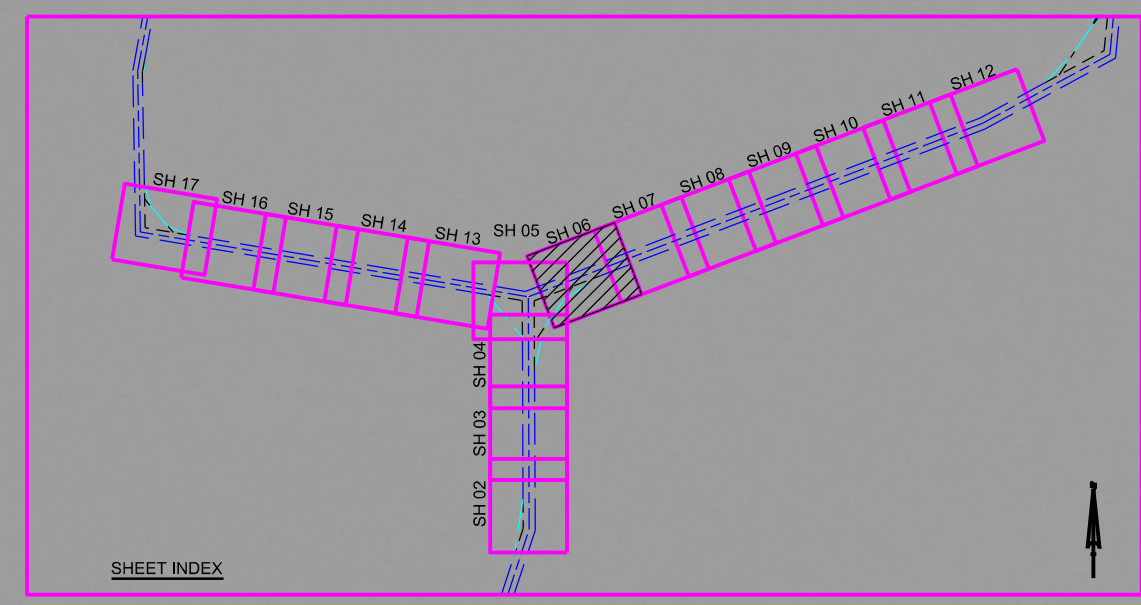
PLAN

Scale: AS SHOWN

Drawing no.

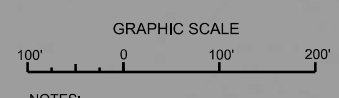
5

SHEET 05 OF 17



GADSDEN POINT CUT

AIDS TO NAVIGATION	PLANE COORDINATES		LATITUDE	LONGITUDE
	X	Y		
LT BUOY#1 (08/17)	489.810	12558.841	27°47'15.43"	82°30'52.27"
LT BUOY#2 (08/17)	489.998	12558.824	27°47'10.82"	82°30'50.15"
LT BUOY#10 (08/17)	488.489	12548.848	27°47'00.59"	82°31'05.91"

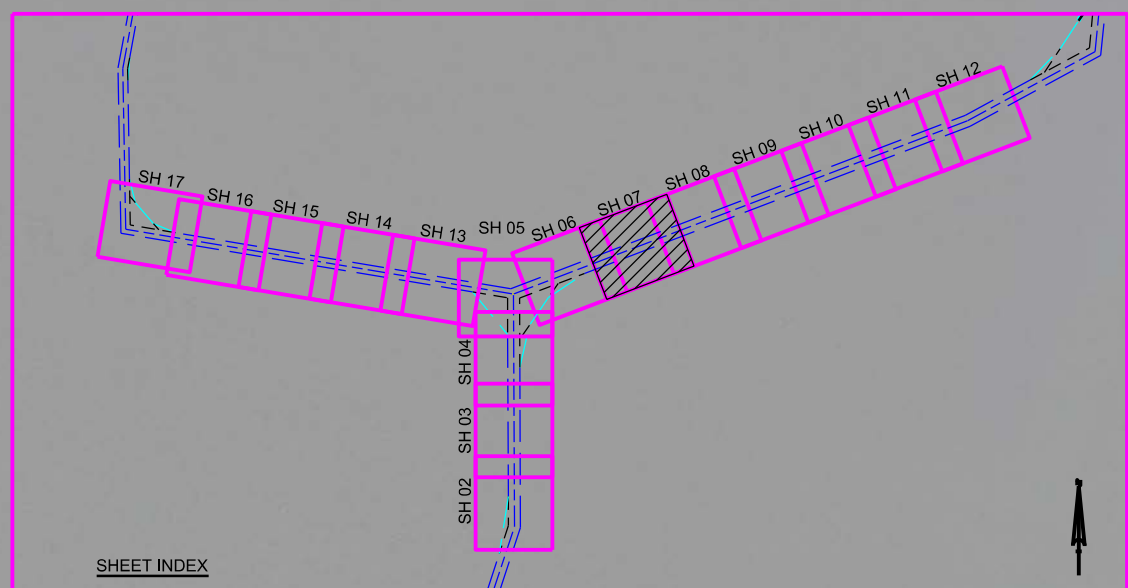
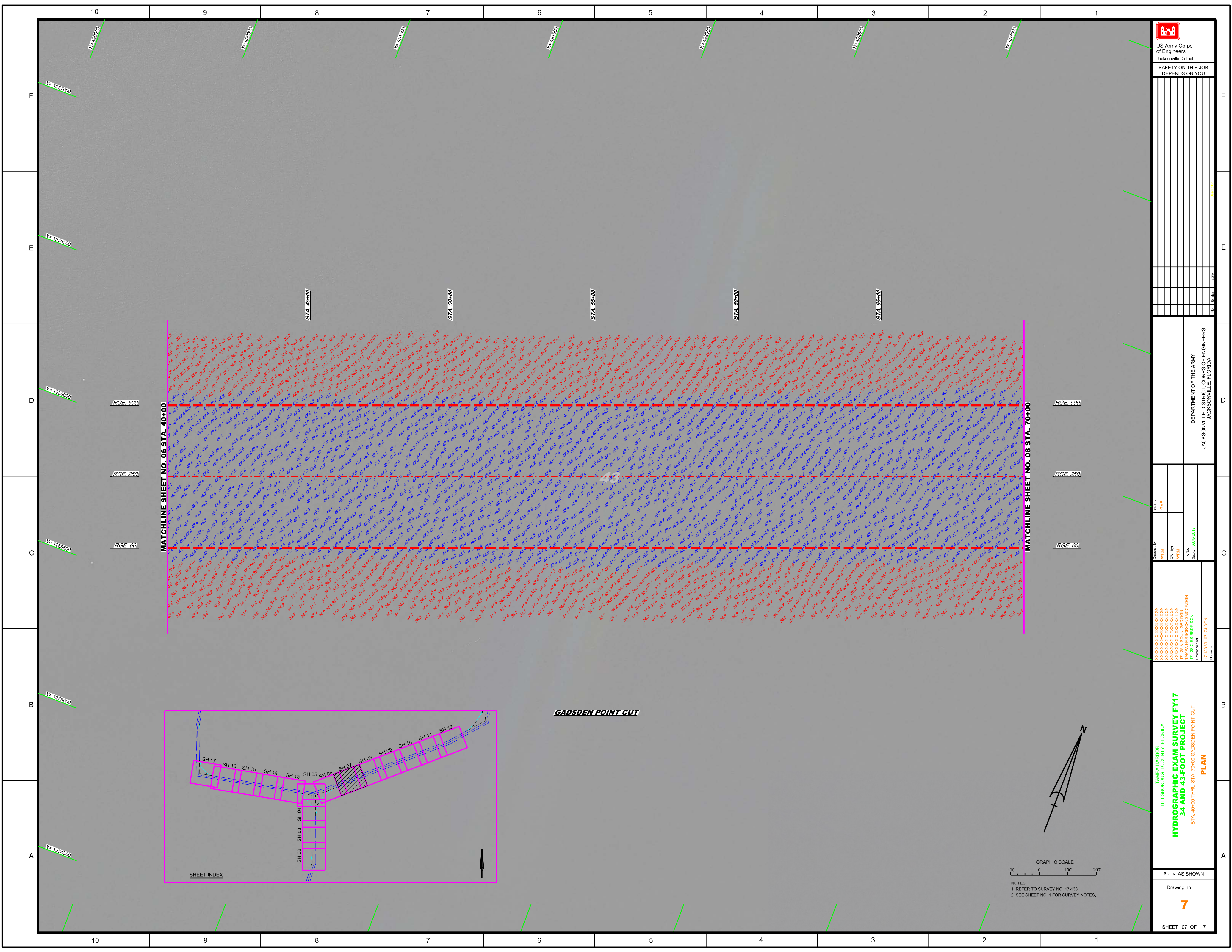


NOTES:
1. REFER TO SURVEY NO. 17-138.
2. SEE SHEET NO. 1 FOR SURVEY NOTES.

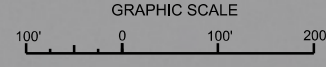
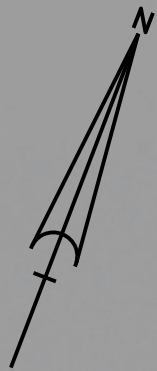
DEPARTMENT OF THE ARMY
JACKSONVILLE DISTRICT, CORPS OF ENGINEERS
JACKSONVILLE, FLORIDA

Designed by: **WRM**
Checked by: **GHR**
Drawn by: **WRM**
Scale: **AUG 2017**

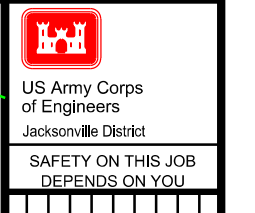
TAMPA HARBOR
HILLSBOROUGH COUNTY, FLORIDA
HYDROGRAPHIC EXAM SURVEY FY17
34 AND 43-FOOT PROJECT
STA. 10+00 THRU STA. 40+00 GADSDEN POINT CUT
PLAN



GADSDEN POINT CUT



NOTES:
1. REFER TO SURVEY NO. 17-138,
2. SEE SHEET NO. 1 FOR SURVEY NOTES.



DEPARTMENT OF THE ARMY
JACKSONVILLE DISTRICT, CORPS OF ENGINEERS
JACKSONVILLE, FLORIDA

Designed by: **WRM**
Checked by: **GHR**
Drawn by: **WRM**
Scale: **AUG 2017**
Reference files:
17-138-BS-BRIDG.DGN
17-138-PA-07_24.DGN

TAMPA HARBOR
HILLSBOROUGH COUNTY, FLORIDA
HYDROGRAPHIC EXAM SURVEY FY17
34 AND 43-FOOT PROJECT
STA. 40+00 THRU STA. 70+00 GADSDEN POINT CUT
PLAN

Scale: AS SHOWN
Drawing no. **7**
SHEET 07 OF 17

