

# GIWW - MANATEE COUNTY, FLORIDA CUT M-5 CURRITUCK AFTER-DREDGE SURVEY FY17 9-FOOT PROJECT

**SURVEY NOTES**

- REFER TO SURVEY NO. 17-125.
- SOUNDINGS ARE IN FEET AND TENTHS AND REFER TO NOAA'S REPORTED MEAN LOWER LOW WATER (MLLW) OF THE 1983-2001 TIDAL EPOCH.
- TIDAL REDUCTIONS WERE OBTAINED UTILIZING A REAL-TIME KINEMATIC (RTK) GPS AND REFERENCED TO MLLW UTILIZING A HYPACK KINEMATIC TIDE DATUM (KTD) MODEL. KTD FILE NAME IS: "SPC-FL-WEST-2010-12-07.KTD".
- ALL ELEVATIONS ARE BELOW THE CHART DATUM UNLESS PRECEDED BY A (+) SIGN.
- PLANE COORDINATES ARE BASED ON THE TRANSVERSE MERCATOR PROJECTION FOR THE WEST ZONE OF FLORIDA AND REFERENCED TO NORTH AMERICAN DATUM OF 1983 (NAD83).
- ALL STATIONING REFERS TO THE CENTERLINE OF THE CHANNEL.
- THIS SURVEY WAS PERFORMED USING REAL-TIME KINEMATIC (RTK) GPS FOR POSITIONING WITH THE FOLLOWING REFERENCE BASE LOCATIONS:  
REFERENCE BASE LOCATED AT "GIS 106" (PID: AG9211)
- DEPTHS DEPICTED BY THIS SURVEY ARE REFERENCED TO MLLW, TIDAL EPOCH 1983-2001 AS REPORTED BY THE NATIONAL OCEANIC AND ATMOSPHERIC ADMINISTRATION (NOAA). NOAA'S VDUTUM MODEL WAS USED AND CALIBRATED TO THE PUBLISHED MLLW HEIGHTS OF THE BENCHMARKS ASSOCIATED WITH THE TIDE GAGE SITES SPECIFIED BELOW:  
NOAA TIDAL STATION 872 6217 TIDAL 1 FOR CUTS M1 THRU M-8 (PID: AG2000)  
VERTICAL MEASUREMENTS WERE MADE USING AN EDGETECH 6205 COMBINED MULTI-BEAM SIDESCAN SONAR. ALL SOUNDINGS SHOWN ARE IN HIGH FREQUENCY.
- AIDS TO NAVIGATION WERE LOCATED DURING THIS SURVEY.
- THE INFORMATION DEPICTED ON THIS MAP REPRESENTS THE RESULTS OF SURVEYS MADE ON THE DATES INDICATED ABOVE AND CAN ONLY BE CONSIDERED AS INDICATING THE GENERAL CONDITIONS AT THAT TIME. THIS CHART IS SOLELY FOR THE DISTRIBUTION OF AVAILABLE DEPTHS AT THE TIME OF THE SURVEY.
- SURVEY ACCURACY PERFORMANCE STANDARDS, QUALITY CONTROL, AND QUALITY ASSURANCE REQUIREMENTS WERE FOLLOWED DURING THIS SURVEY IN ACCORDANCE WITH USACE EM 1110-2-1003, HYDROGRAPHIC SURVEYING, 30 NOV 13.

VESSEL	DATE OF SURVEY	CUT
SB-44	20 APR 2017	M5

LEGEND	
	MONUMENT
	LIGHTED BEACON
	GREEN DAYBEACON
	RED DAYBEACON
	RED LIGHTED BUOY
	GREEN LIGHTED BUOY
	CAN BUOY
	NUN BUOY
	TIDE STAFF
	PROJECT DEPTH

US Army Corps of Engineers  
Jacksonville District  
SAFETY ON THIS JOB DEPENDS ON YOU

<p>DEPARTMENT OF THE ARMY JACKSONVILLE DISTRICT, CORPS OF ENGINEERS JACKSONVILLE, FLORIDA</p>	<p>Check by: GHR</p> <p>Designed by: WRM</p> <p>Drawn by: WRM</p> <p>File No: 17-125-68-BR-R</p> <p>Date: APR 2017</p> <p>Reference Map: 17-125-9401_L_MAN.DGN</p>	<p>GULF INTRACOSTAL WATERWAY MANATEE COUNTY, FLORIDA CALOOG</p> <p><b>CURRITUCK AFTER-DREDGE SURVEY FY17 9-FOOT PROJECT</b></p> <p>INDEX, LOCATION AND VICINITY MAP</p>	<p>Scale: AS SHOWN</p> <p>Drawing no. <b>1 / 4</b></p>	<p>SHEET 01 OF 30</p>





US Army Corps of Engineers  
 Jacksonville District  
 SAFETY ON THIS JOB DEPENDS ON YOU

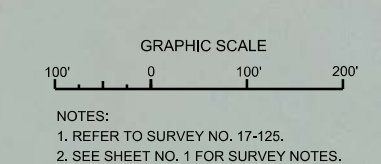

DEPARTMENT OF THE ARMY  
 JACKSONVILLE DISTRICT, CORPS OF ENGINEERS  
 JACKSONVILLE, FLORIDA

RGE\_0  
 RGE\_50  
 RGE\_100

MATCHLINE SHEET NO. 011 MAN STA. 40+00

MATCHLINE SHEET NO. 009 MAN STA. 7+00

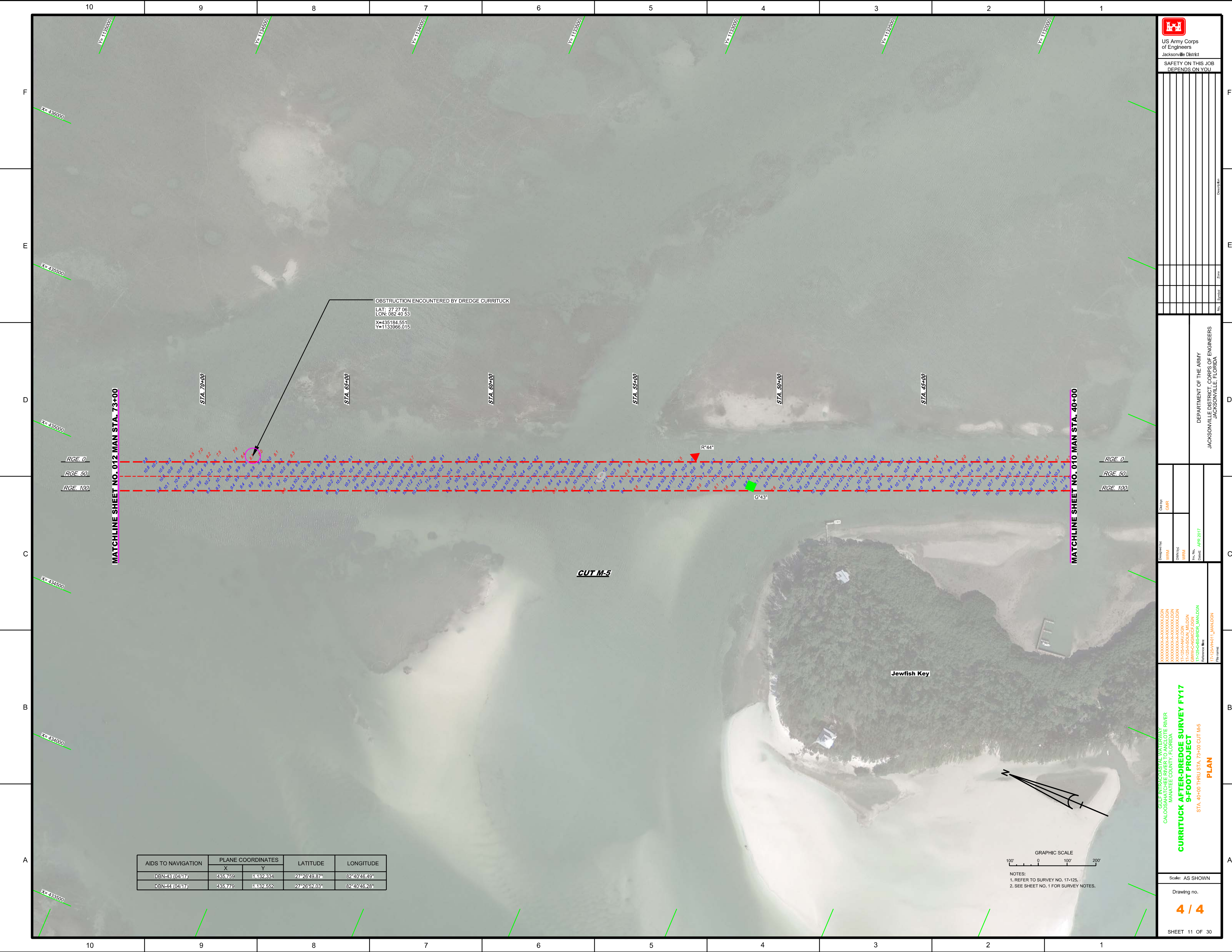
AIDS TO NAVIGATION	PLANE COORDINATES		LATITUDE	LONGITUDE
	X	Y		
NUN BUOY-38A (04/17)	437.409	1,128.723	27°26'14.20"	82°40'27.96"
CAN BUOY-39 (04/17)	437.299	1,128.682	27°26'13.79"	82°40'29.18"
DBN-40 (04/17)	436.995	1,129.651	27°26'23.37"	82°40'32.61"
LT-41 (04/17)	436.249	1,131.072	27°26'37.40"	82°40'40.97"
DBN-42 (04/17)	436.396	1,131.113	27°26'37.82"	82°40'39.35"



Gulf Intracoastal Waterway  
 Caloosahatchee River  
 Manatee County, Florida  
**CURRITUCK AFTER-DREDGE SURVEY FY17  
 9-FOOT PROJECT**  
 STA. 7+00 THRU STA. 40+00 CUT M-5  
**PLAN**

Designed by: WRM  
 Drawn by: WRM  
 File No. 17-125-GS-SR-RDR\_MAN.DGN  
 Date: APR 2017  
 Reference File: 17-125-PR01(L)\_MAN.DGN

Scale: AS SHOWN  
 Drawing no.  
**3 / 4**  
 SHEET 10 OF 30



MATCHLINE SHEET NO. 012 MAN STA. 73+00

MATCHLINE SHEET NO. 010 MAN STA. 40+00

OBSTRUCTION ENCOUNTERED BY DREDGE CURRITUCK  
LAT: 27 27 06  
LON: 082 40 53  
X=435184.551  
Y=1133966.015

STA. 70+00

STA. 65+00

STA. 60+00

STA. 55+00

STA. 50+00

STA. 45+00

R+44'

G+33'

RGE. 0  
RGE. 50  
RGE. 100

RGE. 0  
RGE. 50  
RGE. 100

CUT M-5

Jewfish Key

AIDS TO NAVIGATION	PLANE COORDINATES		LATITUDE	LONGITUDE
	X	Y		
DBN-43 (0447)	435759	1132334	27°26'49.87"	82°40'46.49"
DBN-44 (0447)	435779	1132552	27°26'52.03"	82°40'46.28"

GRAPHIC SCALE  
100' 0 100' 200'

NOTES:  
1. REFER TO SURVEY NO. 17-125.  
2. SEE SHEET NO. 1 FOR SURVEY NOTES.

US Army Corps of Engineers Jacksonville District			
SAFETY ON THIS JOB DEPENDS ON YOU			
NO.	SYMBOL	ZONE	DESCRIPTION

DEPARTMENT OF THE ARMY  
JACKSONVILLE DISTRICT, CORPS OF ENGINEERS  
JACKSONVILLE, FLORIDA

Checked By GHR	Designed By WRM	Drawn By WRM
File No. 17-125-GS-83-R01	Date APR 2017	Scale AS SHOWN
Reference Map 17-125A-P01 L_MAN.DGN	File Name 17-125A-P01 L_MAN.DGN	

GULF INTRACOSTAL WATERWAY TO THE RIVER  
CALOOSAHOATCHEE COUNTY, FLORIDA

### CURRITUCK AFTER-DREDGE SURVEY FY17 9-FOOT PROJECT

STA. 40+00 THRU STA. 73+00 CUT M-5  
**PLAN**

Scale: AS SHOWN  
Drawing no.  
**4 / 4**

SHEET 11 OF 30