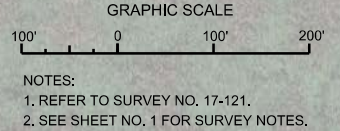



AIDS TO NAVIGATION	PLANE COORDINATES		LATITUDE	LONGITUDE
	X	Y		
DBN-15 (06/17)	684.699	885.353	26°46'09.79"	80°54'42.97"
DBN-18 (06/17)	683.636	883.728	26°45'53.71"	80°54'54.72"





US Army Corps  
of Engineers  
Jacksonville District

SAFETY ON THIS JOB  
DEPENDS ON YOU

---

DEPARTMENT OF THE ARMY  
JACKSONVILLE DISTRICT, CORPS OF ENGINEERS  
JACKSONVILLE, FLORIDA

---

Drawn by: WRM  
Checked by: GMR

File Name: W12121-001-000000.DGN  
Date: JUN 2017

---

XXXXXXXXXXXXXXXXXXXX.DGN  
XXXXXXXXXXXXXXXXXXXX.DGN  
17-121-001-000000.DGN  
17-121-001-000000.DGN  
INTERIM-LO\_PITCHANS-VADON  
17-121-001-000000.DGN  
Reference files:  
17-121-001-000000.DGN

---

OKEECHOBEE WATERWAY, FLORIDA  
**HYDRO EXAMINATION SURVEY FY17**  
**6 AND 8-FOOT PROJECT**  
ROUTE-1 (CROSS-LAKE CHANNEL)  
**PLAN**

---

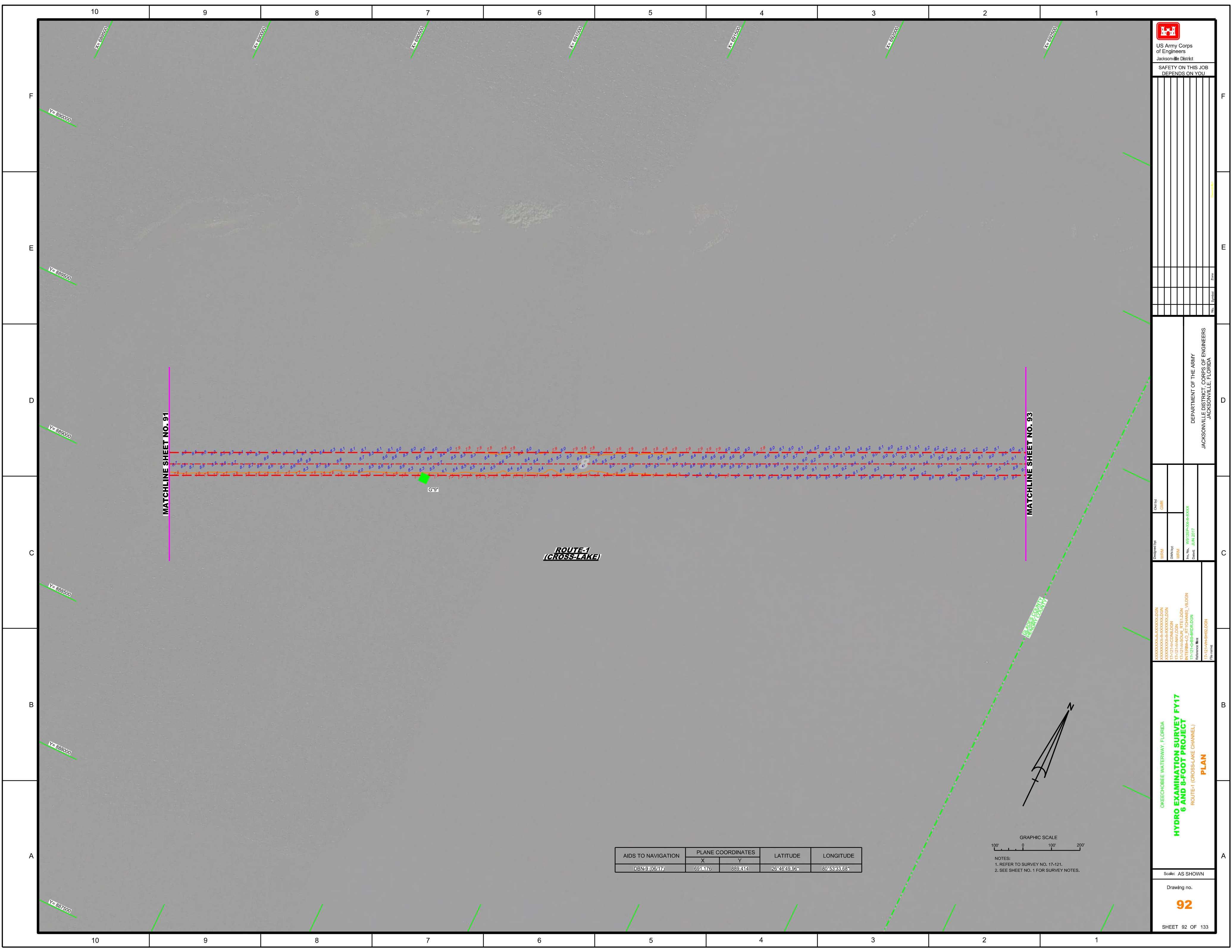
Scale: AS SHOWN

Drawing no.  
**89**

SHEET 89 OF 133







AIDS TO NAVIGATION	PLANE COORDINATES		LATITUDE	LONGITUDE
	X	Y		
DBN-9 (06/17)	691176	889414	26°46'49.26"	80°53'33.68"

GRAPHIC SCALE  
 100' 0 100' 200'  
 NOTES:  
 1. REFER TO SURVEY NO. 17-121.  
 2. SEE SHEET NO. 1 FOR SURVEY NOTES.

US Army Corps of Engineers  
 Jacksonville District  
 SAFETY ON THIS JOB  
 DEPENDS ON YOU

DEPARTMENT OF THE ARMY  
 JACKSONVILLE DISTRICT, CORPS OF ENGINEERS  
 JACKSONVILLE, FLORIDA

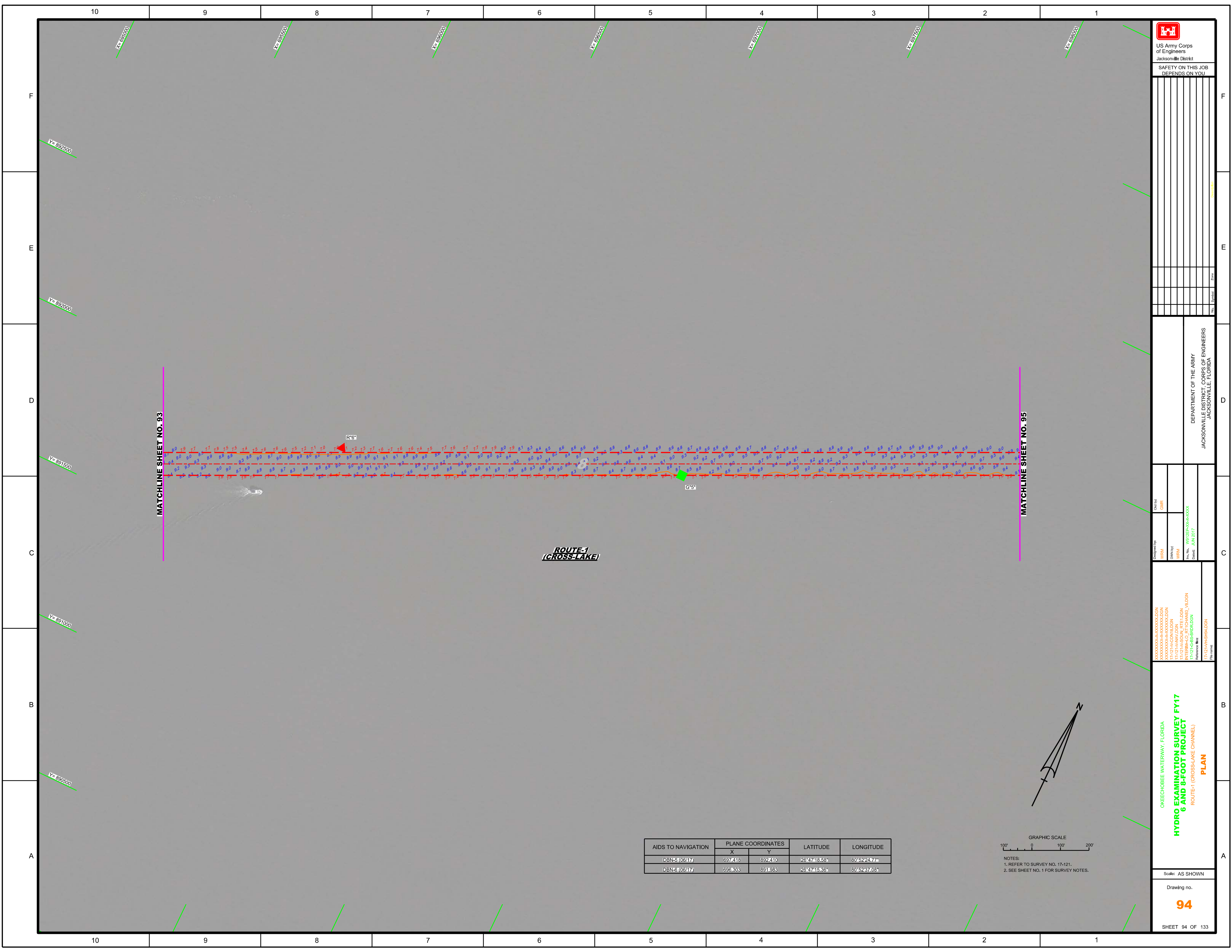
Drawn by: WRM  
 Check by: GMR  
 Date: JUN 2017

XXXXXXXXXXXXXXXXXXXX.DGN  
 XXXXXXXXXXXXXXXXXXXX.DGN  
 17-121-HAV.DGN  
 17-121-LS-BS-889414.DGN  
 17-121-LS-BS-889414.DGN  
 17-121-HS-892.DGN

OKEECHOBEE WATERWAY, FLORIDA  
**HYDRO EXAMINATION SURVEY FY17**  
**6 AND 8-FOOT PROJECT**  
 ROUTE-1 (CROSS-LAKE CHANNEL)  
**PLAN**

Scale: AS SHOWN  
 Drawing no.  
**92**  
 SHEET 92 OF 133





US Army Corps of Engineers  
 Jacksonville District  
 SAFETY ON THIS JOB  
 DEPENDS ON YOU

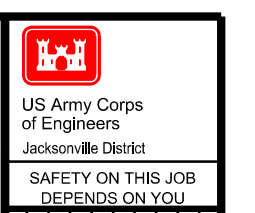
DEPARTMENT OF THE ARMY  
 JACKSONVILLE DISTRICT, CORPS OF ENGINEERS  
 JACKSONVILLE, FLORIDA

OKEECHOBEE WATERWAY, FLORIDA  
**HYDRO EXAMINATION SURVEY FY17**  
**ROUTE-1 (CROSS-LAKE CHANNEL)**  
**PLAN**

Scale: AS SHOWN  
 Drawing no.  
**94**  
 SHEET 94 OF 133

AIDS TO NAVIGATION	PLANE COORDINATES		LATITUDE	LONGITUDE
	X	Y		
DBN-5 (0647)	697.418	892.210	26°47'18.58"	80°52'23.77"
DBN-5 (0647)	698.303	891.983	26°47'15.36"	80°52'37.08"

GRAPHIC SCALE  
 100' 0 100' 200'  
 NOTES:  
 1. REFER TO SURVEY NO. 17-121.  
 2. SEE SHEET NO. 1 FOR SURVEY NOTES.



US Army Corps of Engineers  
Jacksonville District

SAFETY ON THIS JOB DEPENDS ON YOU


DEPARTMENT OF THE ARMY  
JACKSONVILLE DISTRICT, CORPS OF ENGINEERS  
JACKSONVILLE, FLORIDA

Checked by: GHR  
Designed by: WRM  
Drawn by: WRM  
File No. W121214-CON-117-000  
Project: JCN 2017

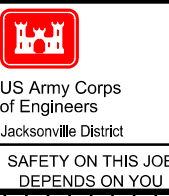
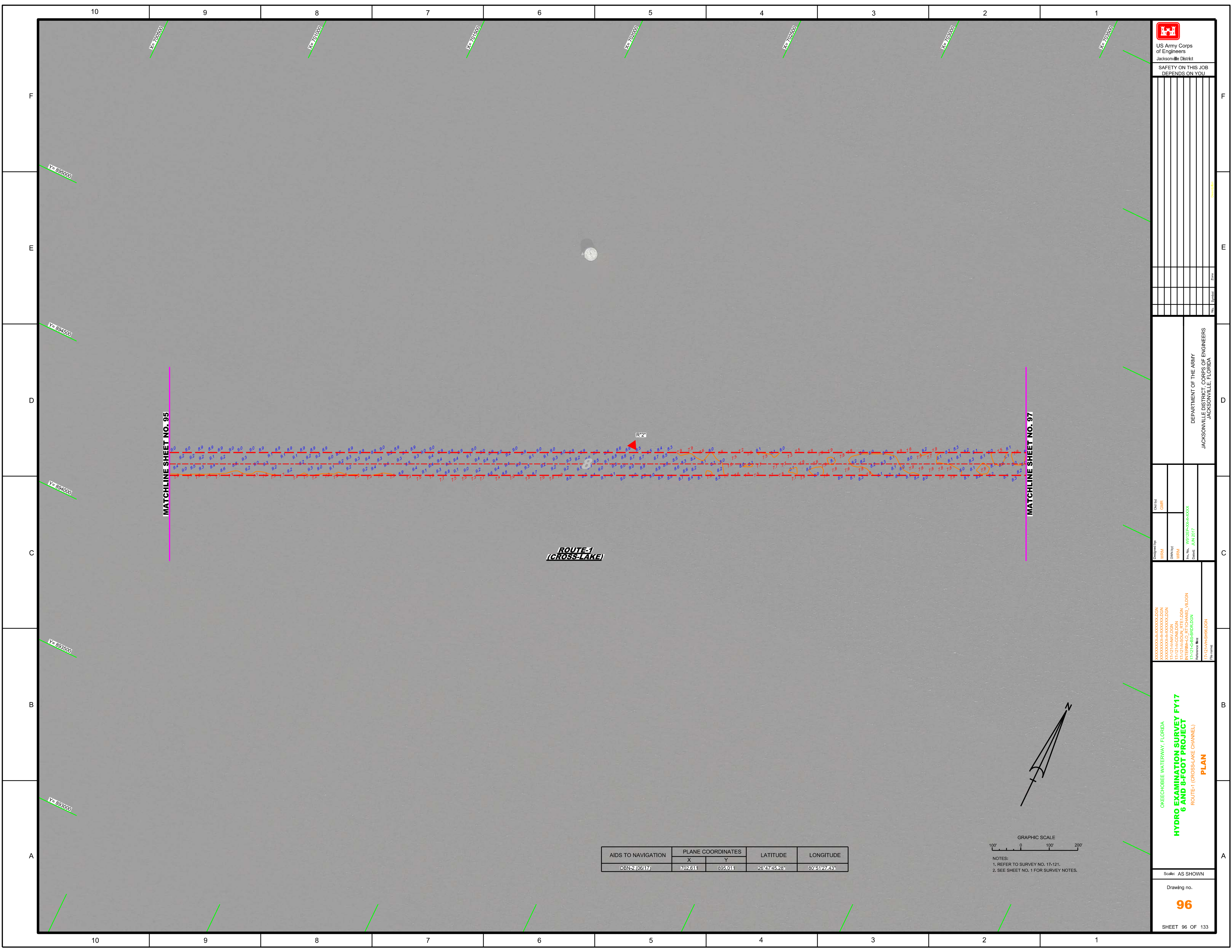
XXXXXXXXXXXXXXXXXXXX.DGN  
XXXXXXXXXXXXXXXXXXXX.DGN  
XXXXXXXXXXXXXXXXXXXX.DGN  
F:\1214-CON\117-000.DGN  
INTERNAL-LO-RTCHANS\_VLDGN  
F:\1214-CON-117-000.DGN  
Reference files: F:\1214-CON-117-000.DGN  
File name: F:\1214-CON-117-000.DGN

OKECHOBEE WATERWAY, FLORIDA  
HYDRO EXAMINATION SURVEY FY17  
6 AND 8-FOOT PROJECT  
ROUTE-1 (CROSS-LAKE CHANNEL)  
PLAN

Scale: AS SHOWN  
Drawing no. **95**  
SHEET 95 OF 133

AIDS TO NAVIGATION	PLANE COORDINATES		LATITUDE	LONGITUDE
	X	Y		
DBN-3 (06/17)	700.618	898.867	28°47'33.98"	80°51'49.49"
DBN-4 (06/17)	699.618	898.857	28°47'30.91"	80°52'00.53"

GRAPHIC SCALE  
100' 0 100' 200'  
NOTES:  
1. REFER TO SURVEY NO. 17-121.  
2. SEE SHEET NO. 1 FOR SURVEY NOTES.



US Army Corps  
of Engineers  
Jacksonville District

SAFETY ON THIS JOB  
DEPENDS ON YOU

NO.	SYMBOL	ZONE

DEPARTMENT OF THE ARMY  
JACKSONVILLE DISTRICT, CORPS OF ENGINEERS  
JACKSONVILLE, FLORIDA

Designed by: WRM  
Checked by: GMR  
Drawn by: WRM  
File No.: W1212-6-8B-0000  
Date: JUN 2017

XXXXXXXXXXXXXXXXXXXX.DGN  
XXXXXXXXXXXXXXXXXXXX.DGN  
F:\12\A\CONV.DGN  
INTERNAL-LO\_RIT\CHANS\_VLDGN  
Reference File:  
F:\12\HYDRO.DGN

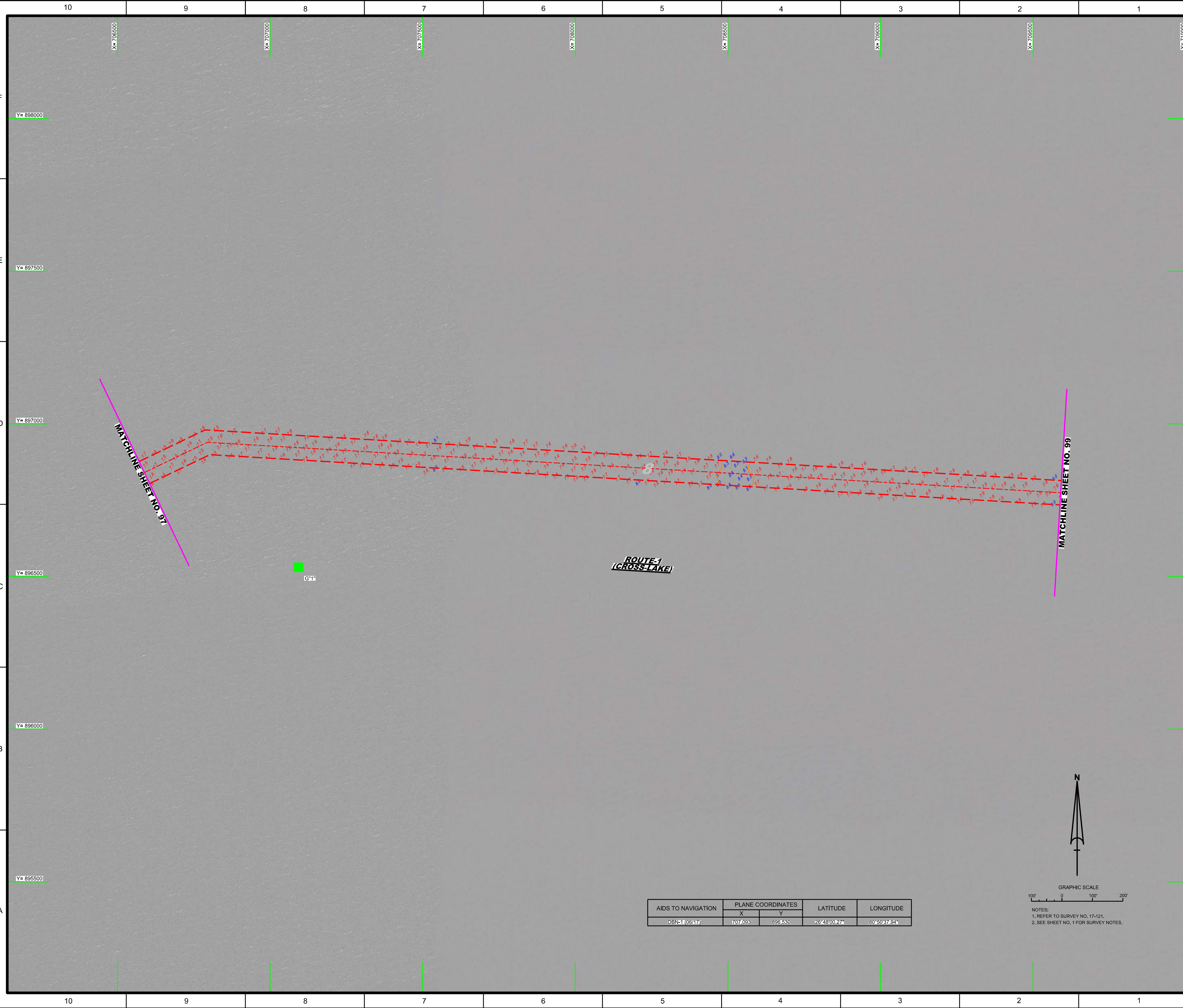
OKECHOBEE WATERWAY, FLORIDA  
HYDRO EXAMINATION SURVEY FY17  
6 AND 8-FOOT PROJECT  
ROUTE-1 (CROSS-LAKE CHANNEL)  
PLAN  
Scale: AS SHOWN  
Drawing no.  
**96**  
SHEET 96 OF 133

AIDS TO NAVIGATION	PLANE COORDINATES		LATITUDE	LONGITUDE
	X	Y		
DBN-2 (06/17)	702.611	895.011	26°47'45.28"	80°51'27.45"

GRAPHIC SCALE  
100' 0 100' 200'  
NOTES:  
1. REFER TO SURVEY NO. 17-121.  
2. SEE SHEET NO. 1 FOR SURVEY NOTES.







 <b>US Army Corps of Engineers</b> Jacksonville District	
SAFETY ON THIS JOB DEPENDS ON YOU	
Date _____	Scale _____
Title _____	Author _____
Check By _____	Date _____

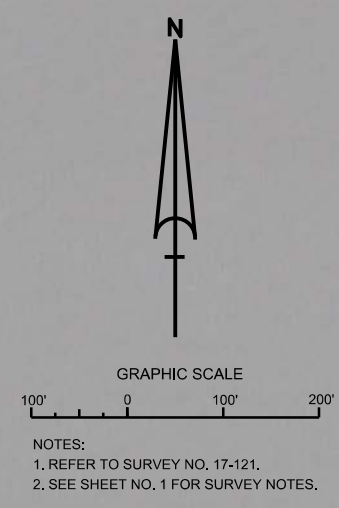
DEPARTMENT OF THE ARMY  
 JACKSONVILLE DISTRICT, CORPS OF ENGINEERS  
 JACKSONVILLE, FLORIDA

Designated By: WRM  
 Drawn By: WRM  
 Checked By: WRM  
 Date: JUN 2017

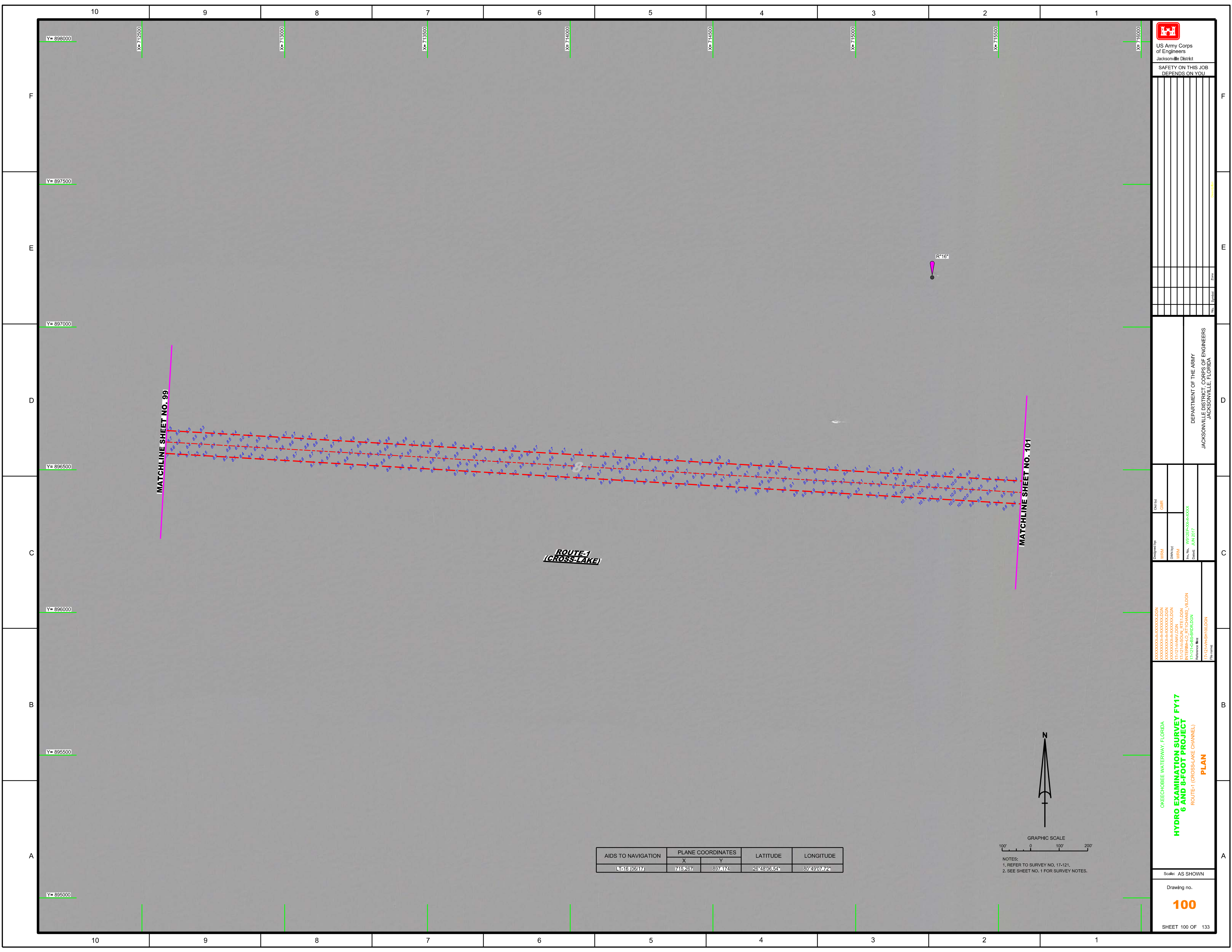
OKEECHOBEE WATERWAY, FLORIDA  
**HYDRO EXAMINATION SURVEY FY17**  
**6 AND 8-FOOT PROJECT**  
 ROUTE-1 (CROSS-LAKE CHANNEL)  
**PLAN**

Scale: AS SHOWN  
 Drawing no.  
**98**  
 SHEET 98 OF 133

AIDS TO NAVIGATION	PLANE COORDINATES		LATITUDE	LONGITUDE
	X	Y		
DBN-1 (0647)	707.093	896.530	26°48'00.27"	80°50'37.94"







**ROUTE-1  
(CROSS-LAKE)**


MATCHLINE SHEET NO. 99

MATCHLINE SHEET NO. 101

AIDS TO NAVIGATION	PLANE COORDINATES		LATITUDE	LONGITUDE
	X	Y		
Lt-16 (0617)	715.267	897.174	26°48'06.54"	80°49'07.72"

GRAPHIC SCALE  
100' 0 100' 200'

NOTES:  
1. REFER TO SURVEY NO. 17-121.  
2. SEE SHEET NO. 1 FOR SURVEY NOTES.



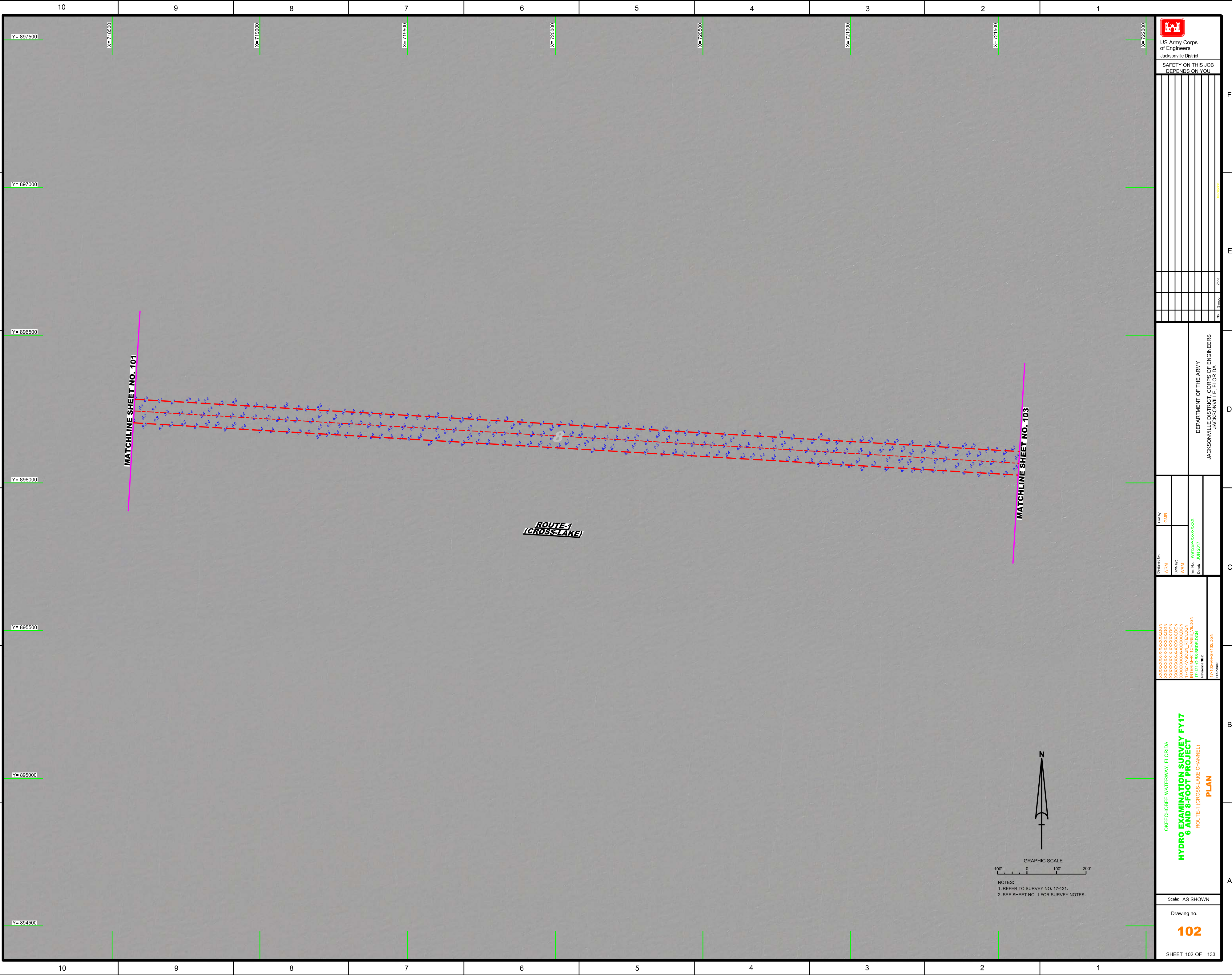
US Army Corps of Engineers  
Jacksonville District  
SAFETY ON THIS JOB  
DEPENDS ON YOU

Drawn by:	WRM	Checked by:	GMR	Project No.:	17-121-001-001	Scale:	AS SHOWN	
Designed by:	WRM	Drawn by:	WRM	File No.:	17-121-001-001	Drawing no.:	100	
Reference files:	17-121-001-001.DGN 17-121-001-002.DGN 17-121-001-003.DGN 17-121-001-004.DGN 17-121-001-005.DGN 17-121-001-006.DGN 17-121-001-007.DGN 17-121-001-008.DGN 17-121-001-009.DGN 17-121-001-010.DGN 17-121-001-011.DGN 17-121-001-012.DGN 17-121-001-013.DGN 17-121-001-014.DGN 17-121-001-015.DGN 17-121-001-016.DGN 17-121-001-017.DGN 17-121-001-018.DGN 17-121-001-019.DGN 17-121-001-020.DGN 17-121-001-021.DGN 17-121-001-022.DGN 17-121-001-023.DGN 17-121-001-024.DGN 17-121-001-025.DGN 17-121-001-026.DGN 17-121-001-027.DGN 17-121-001-028.DGN 17-121-001-029.DGN 17-121-001-030.DGN 17-121-001-031.DGN 17-121-001-032.DGN 17-121-001-033.DGN 17-121-001-034.DGN 17-121-001-035.DGN 17-121-001-036.DGN 17-121-001-037.DGN 17-121-001-038.DGN 17-121-001-039.DGN 17-121-001-040.DGN 17-121-001-041.DGN 17-121-001-042.DGN 17-121-001-043.DGN 17-121-001-044.DGN 17-121-001-045.DGN 17-121-001-046.DGN 17-121-001-047.DGN 17-121-001-048.DGN 17-121-001-049.DGN 17-121-001-050.DGN 17-121-001-051.DGN 17-121-001-052.DGN 17-121-001-053.DGN 17-121-001-054.DGN 17-121-001-055.DGN 17-121-001-056.DGN 17-121-001-057.DGN 17-121-001-058.DGN 17-121-001-059.DGN 17-121-001-060.DGN 17-121-001-061.DGN 17-121-001-062.DGN 17-121-001-063.DGN 17-121-001-064.DGN 17-121-001-065.DGN 17-121-001-066.DGN 17-121-001-067.DGN 17-121-001-068.DGN 17-121-001-069.DGN 17-121-001-070.DGN 17-121-001-071.DGN 17-121-001-072.DGN 17-121-001-073.DGN 17-121-001-074.DGN 17-121-001-075.DGN 17-121-001-076.DGN 17-121-001-077.DGN 17-121-001-078.DGN 17-121-001-079.DGN 17-121-001-080.DGN 17-121-001-081.DGN 17-121-001-082.DGN 17-121-001-083.DGN 17-121-001-084.DGN 17-121-001-085.DGN 17-121-001-086.DGN 17-121-001-087.DGN 17-121-001-088.DGN 17-121-001-089.DGN 17-121-001-090.DGN 17-121-001-091.DGN 17-121-001-092.DGN 17-121-001-093.DGN 17-121-001-094.DGN 17-121-001-095.DGN 17-121-001-096.DGN 17-121-001-097.DGN 17-121-001-098.DGN 17-121-001-099.DGN 17-121-001-100.DGN 17-121-001-101.DGN 17-121-001-102.DGN 17-121-001-103.DGN 17-121-001-104.DGN 17-121-001-105.DGN 17-121-001-106.DGN 17-121-001-107.DGN 17-121-001-108.DGN 17-121-001-109.DGN 17-121-001-110.DGN 17-121-001-111.DGN 17-121-001-112.DGN 17-121-001-113.DGN 17-121-001-114.DGN 17-121-001-115.DGN 17-121-001-116.DGN 17-121-001-117.DGN 17-121-001-118.DGN 17-121-001-119.DGN 17-121-001-120.DGN 17-121-001-121.DGN 17-121-001-122.DGN 17-121-001-123.DGN 17-121-001-124.DGN 17-121-001-125.DGN 17-121-001-126.DGN 17-121-001-127.DGN 17-121-001-128.DGN 17-121-001-129.DGN 17-121-001-130.DGN 17-121-001-131.DGN 17-121-001-132.DGN 17-121-001-133.DGN 17-121-001-134.DGN 17-121-001-135.DGN 17-121-001-136.DGN 17-121-001-137.DGN 17-121-001-138.DGN 17-121-001-139.DGN 17-121-001-140.DGN 17-121-001-141.DGN 17-121-001-142.DGN 17-121-001-143.DGN 17-121-001-144.DGN 17-121-001-145.DGN 17-121-001-146.DGN 17-121-001-147.DGN 17-121-001-148.DGN 17-121-001-149.DGN 17-121-001-150.DGN 17-121-001-151.DGN 17-121-001-152.DGN 17-121-001-153.DGN 17-121-001-154.DGN 17-121-001-155.DGN 17-121-001-156.DGN 17-121-001-157.DGN 17-121-001-158.DGN 17-121-001-159.DGN 17-121-001-160.DGN 17-121-001-161.DGN 17-121-001-162.DGN 17-121-001-163.DGN 17-121-001-164.DGN 17-121-001-165.DGN 17-121-001-166.DGN 17-121-001-167.DGN 17-121-001-168.DGN 17-121-001-169.DGN 17-121-001-170.DGN 17-121-001-171.DGN 17-121-001-172.DGN 17-121-001-173.DGN 17-121-001-174.DGN 17-121-001-175.DGN 17-121-001-176.DGN 17-121-001-177.DGN 17-121-001-178.DGN 17-121-001-179.DGN 17-121-001-180.DGN 17-121-001-181.DGN 17-121-001-182.DGN 17-121-001-183.DGN 17-121-001-184.DGN 17-121-001-185.DGN 17-121-001-186.DGN 17-121-001-187.DGN 17-121-001-188.DGN 17-121-001-189.DGN 17-121-001-190.DGN 17-121-001-191.DGN 17-121-001-192.DGN 17-121-001-193.DGN 17-121-001-194.DGN 17-121-001-195.DGN 17-121-001-196.DGN 17-121-001-197.DGN 17-121-001-198.DGN 17-121-001-199.DGN 17-121-001-200.DGN 							DEPARTMENT OF THE ARMY JACKSONVILLE DISTRICT, CORPS OF ENGINEERS JACKSONVILLE, FLORIDA

OKEECHOBEE WATERWAY, FLORIDA  
**HYDRO EXAMINATION SURVEY FY17**  
**6 AND 8-FOOT PROJECT**  
 ROUTE-1 (CROSS-LAKE CHANNEL)  
**PLAN**

SHEET 100 OF 133





**US Army Corps of Engineers**  
 Jacksonville District  
 SAFETY ON THIS JOB  
 DEPENDS ON YOU

No.	Symbol	Zone

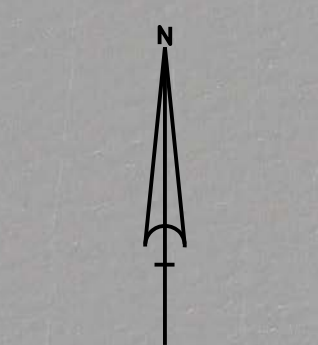
DEPARTMENT OF THE ARMY  
 JACKSONVILLE DISTRICT, CORPS OF ENGINEERS  
 JACKSONVILLE, FLORIDA

**Designated by:**  
 WRM / WRM / WRM  
 Drawn by:  
 WRM  
 File No.: WR12P66-000-0000  
 Date: JUN 2017

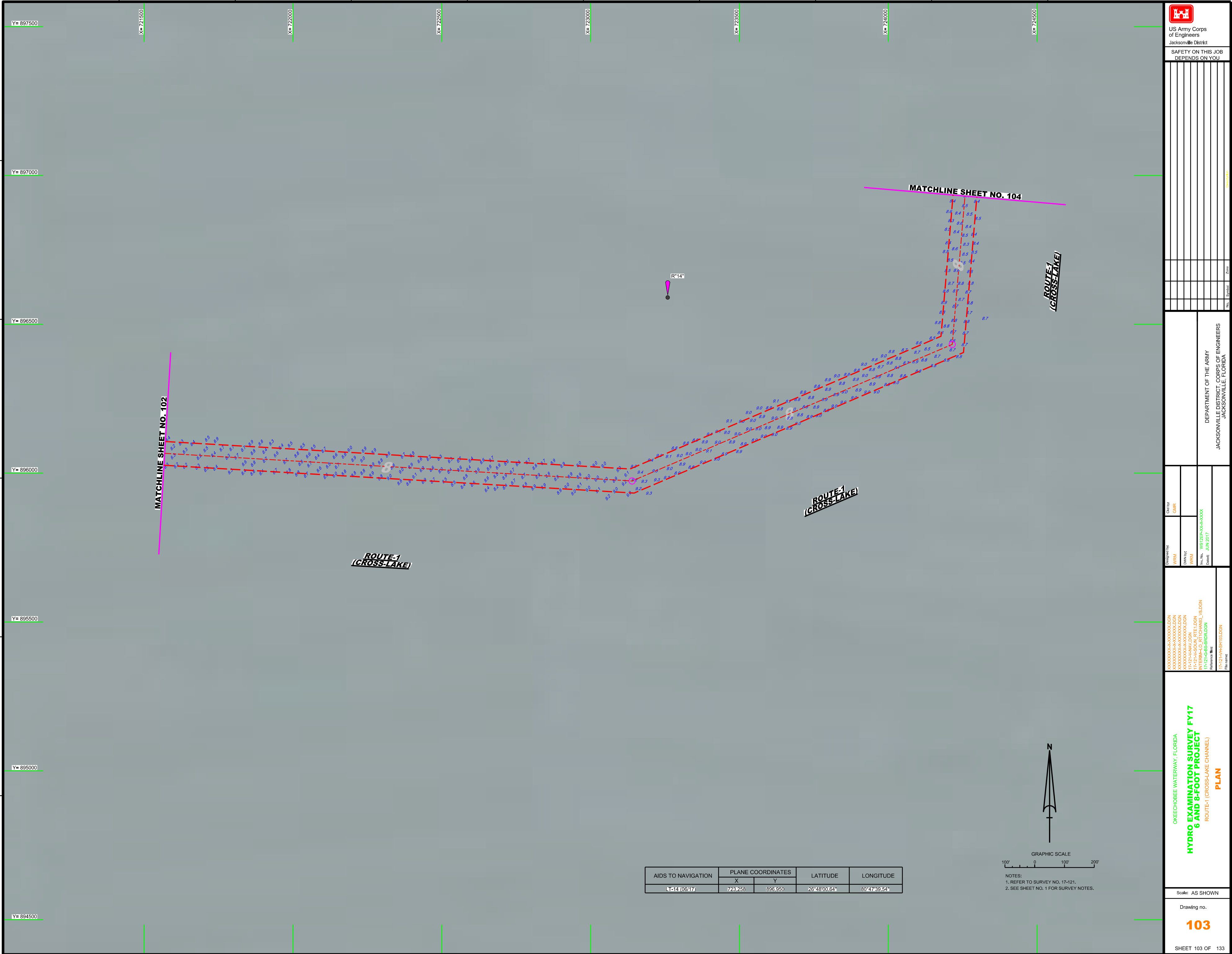
**Check by:**  
 GMR

XX  
 XXX  
 XXX  
 XXX  
 XXX  
 INTERIM-STITCHINGS.VOLDGN  
 17-121-66-SB-SB10A.DGN  
 Reference files:  
 17-10204PHSH102.DGN  
 File name:

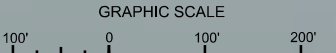
OKEECHOBEE WATERWAY, FLORIDA  
**HYDRO EXAMINATION SURVEY FY17**  
**6 AND 8-FOOT PROJECT**  
 ROUTE-1 (CROSS-LAKE CHANNEL)  
**PLAN**



**NOTES:**  
 1. REFER TO SURVEY NO. 17-121.  
 2. SEE SHEET NO. 1 FOR SURVEY NOTES.



AIDS TO NAVIGATION	PLANE COORDINATES		LATITUDE	LONGITUDE
	X	Y		
L=14 (06/17)	723,258	896,950	26°48'00.64"	80°47'39.54"



NOTES:  
 1. REFER TO SURVEY NO. 17-121.  
 2. SEE SHEET NO. 1 FOR SURVEY NOTES.

**US Army Corps of Engineers**  
 Jacksonville District  
 SAFETY ON THIS JOB  
 DEPENDS ON YOU

No.	Symbol	Zone

DEPARTMENT OF THE ARMY  
 JACKSONVILLE DISTRICT, CORPS OF ENGINEERS  
 JACKSONVILLE, FLORIDA

Drawn by: WRM  
 Designated by: WRM  
 Checked by: GMR  
 Date: JUN 2017  
 File Name: 17-121-HSH103.DGN  
 Reference files: 17-121-HAV.DGN, 17-121-HSH.DGN, 17-121-LR-RT-CHANS\_VLDGN, 17-121-HS-BR-DGN, 17-121-HS-H103.DGN

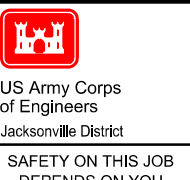
OKEECHOBEE WATERWAY, FLORIDA  
**HYDRO EXAMINATION SURVEY FY17**  
**6 AND 8-FOOT PROJECT**  
 ROUTE-1 (CROSS-LAKE CHANNEL)  
**PLAN**

Scale: AS SHOWN  
 Drawing no.  
**103**  
 SHEET 103 OF 133





10 9 8 7 6 5 4 3 2 1



US Army Corps of Engineers  
Jacksonville District

SAFETY ON THIS JOB DEPENDS ON YOU

No.	Symbol	Zone

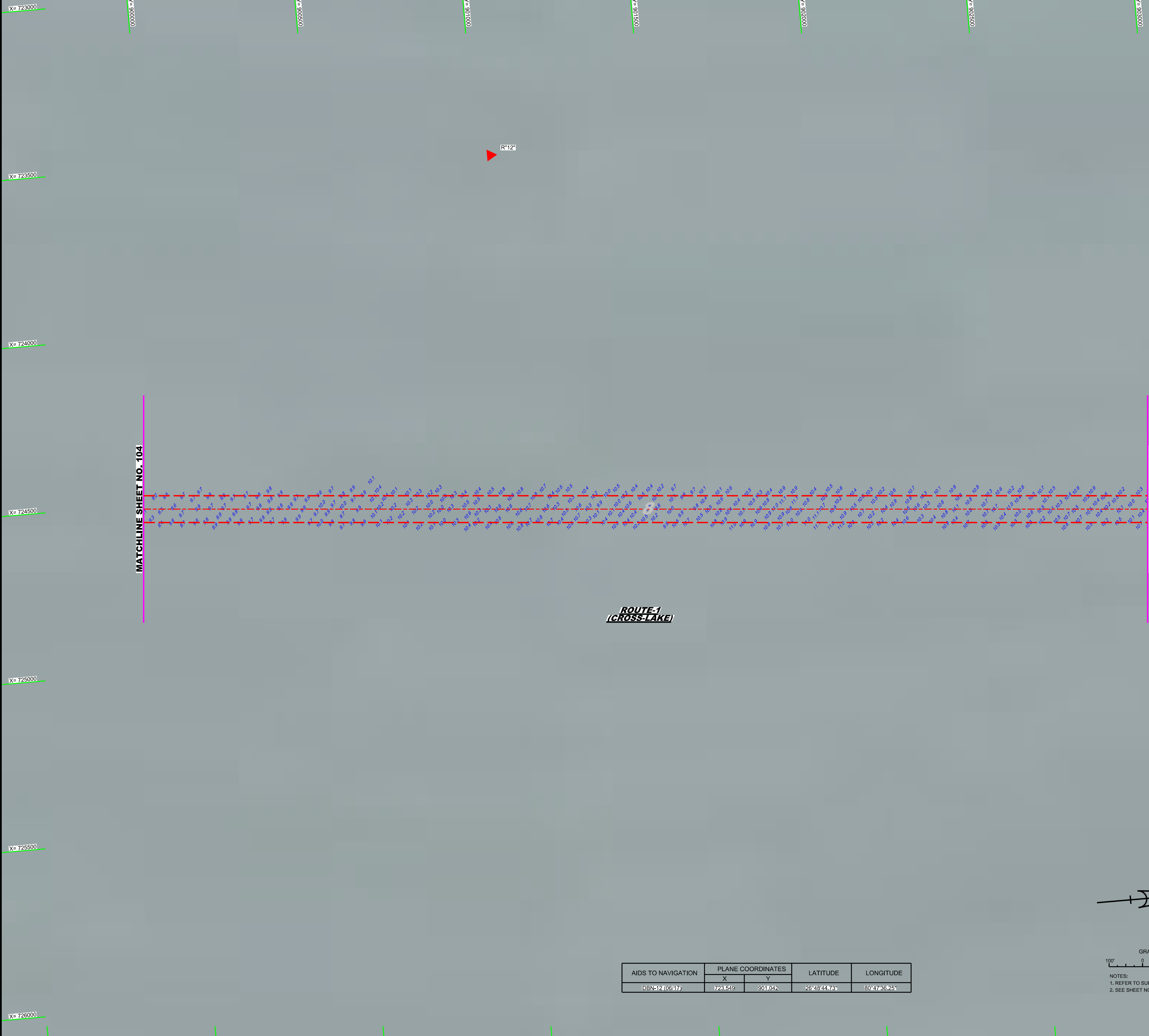
DEPARTMENT OF THE ARMY  
JACKSONVILLE DISTRICT, CORPS OF ENGINEERS  
JACKSONVILLE, FLORIDA

F  
E  
D  
C  
B  
A

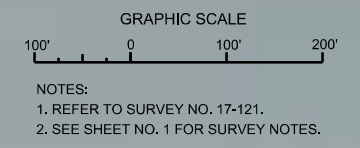
MATCHLINE SHEET NO. 104

MATCHLINE SHEET NO. 106

**ROUTE-1  
(CROSS-LAKE)**



AIDS TO NAVIGATION	PLANE COORDINATES		LATITUDE	LONGITUDE
	X	Y		
DBN-12 (06/17)	723,549	901,042	26°48'44.73"	80°47'36.25"



NOTES:  
1. REFER TO SURVEY NO. 17-121.  
2. SEE SHEET NO. 1 FOR SURVEY NOTES.

Designed by: **WRM**  
Checked by: **GHR**

Drawn by: **WRM**  
Checked by: **WRM**

File Name: **17-121-ES-BR106.DGN**  
Drawing Date: **JUN 2017**

OKEECHOBEE WATERWAY, FLORIDA  
**HYDRO EXAMINATION SURVEY FY17**  
**6 AND 8-FOOT PROJECT**  
ROUTE-1 (CROSS-LAKE CHANNEL)  
**PLAN**

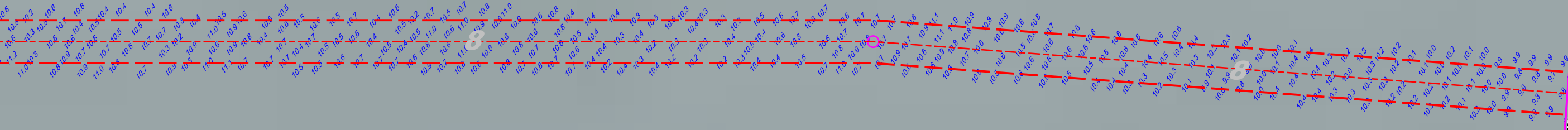
Scale: AS SHOWN

Drawing no.  
**105**

SHEET 105 OF 133

10 9 8 7 6 5 4 3 2 1

MATCHLINE SHEET NO. 105



G\*9'

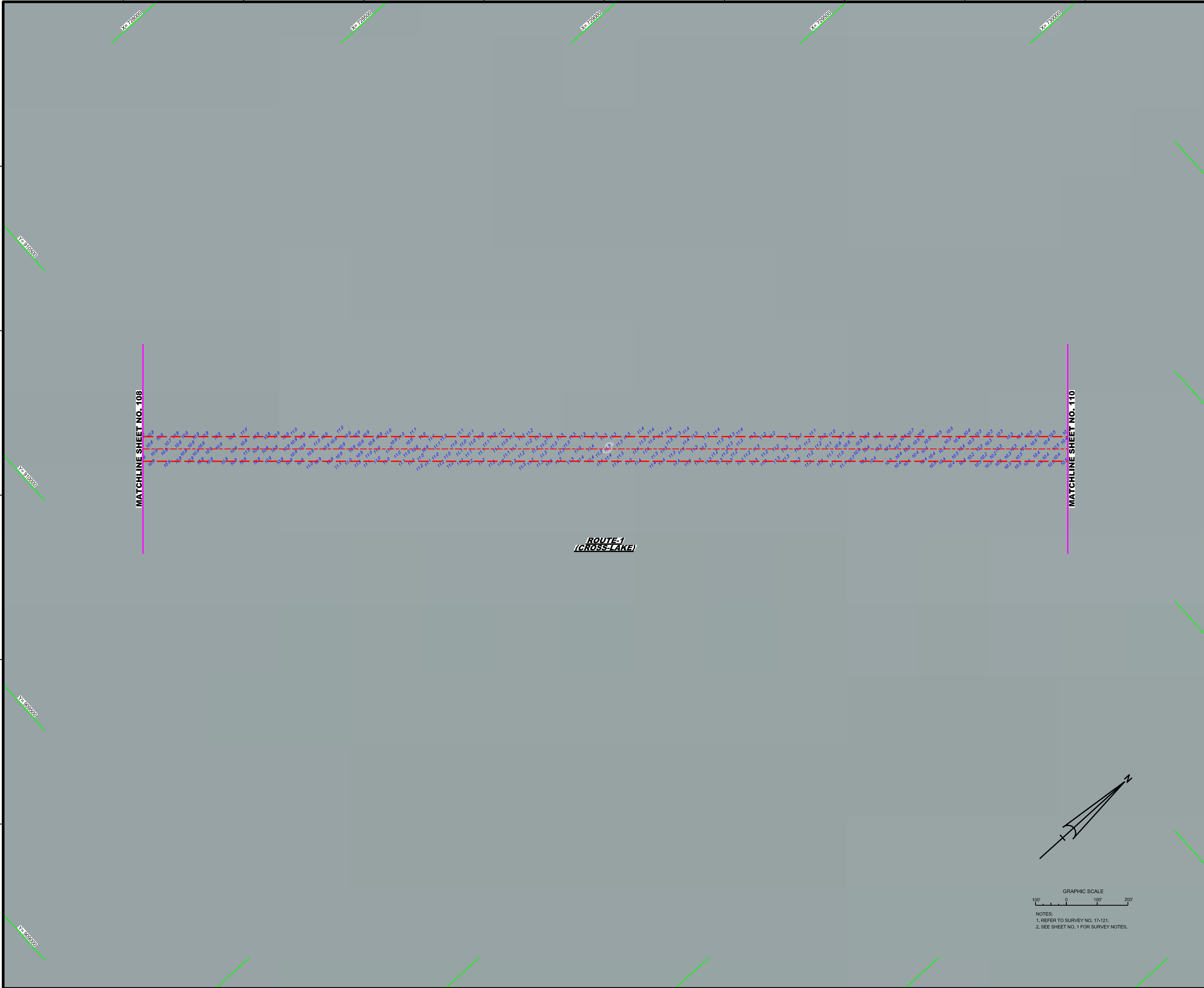
**ROUTE-1  
(CROSS-LAKE)**

**ROUTE-1  
(CROSS-LAKE)**

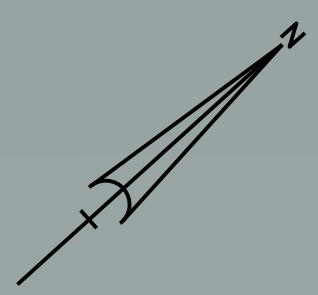
MATCHLINE SHEET NO. 107



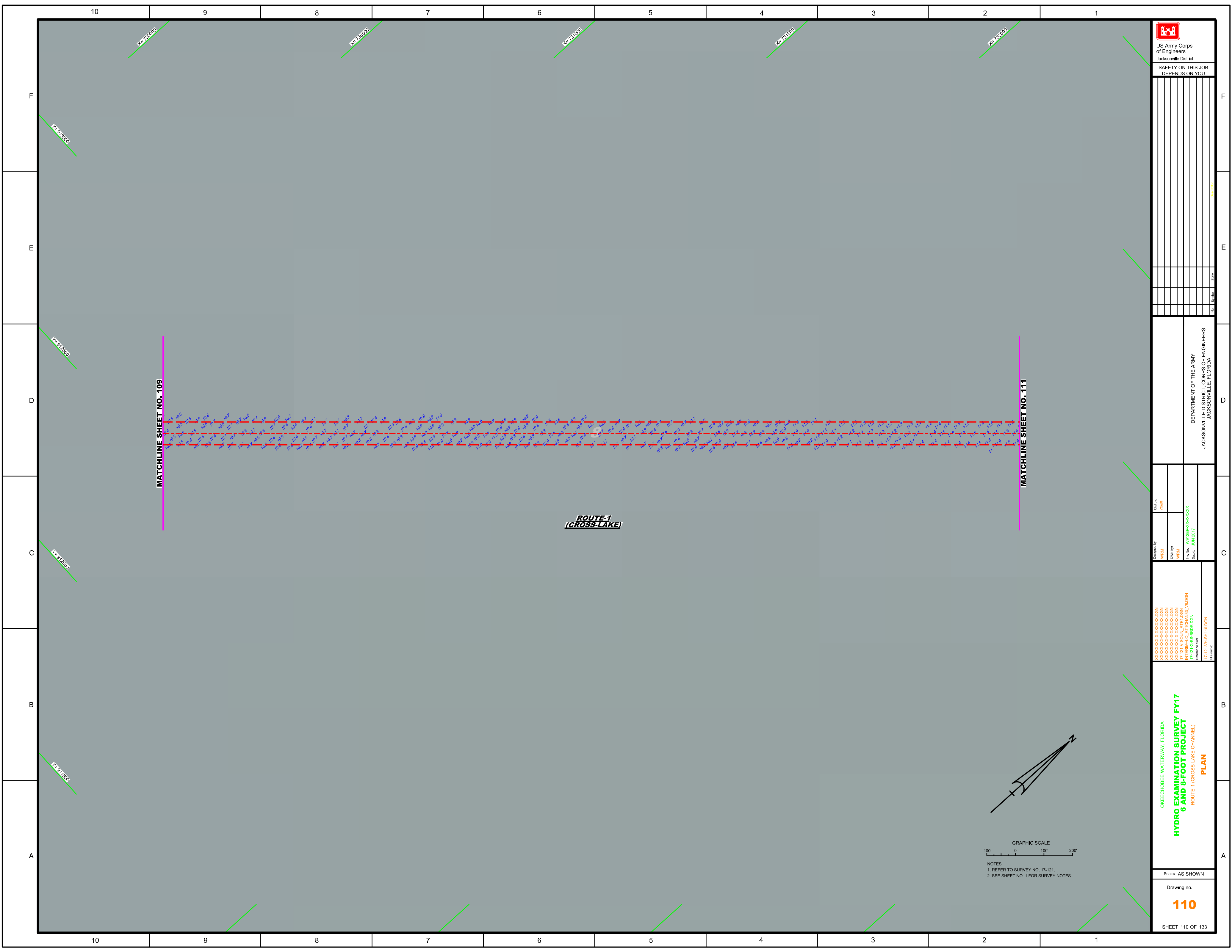




<p>US Army Corps of Engineers Jacksonville District</p> <p>SAFETY ON THIS JOB DEPENDS ON YOU</p>																									
<table border="1"> <thead> <tr> <th>Rev.</th> <th>Symbol</th> <th>Date</th> <th>Description</th> </tr> </thead> <tbody> <tr> <td> </td> <td> </td> <td> </td> <td> </td> </tr> <tr> <td> </td> <td> </td> <td> </td> <td> </td> </tr> <tr> <td> </td> <td> </td> <td> </td> <td> </td> </tr> <tr> <td> </td> <td> </td> <td> </td> <td> </td> </tr> <tr> <td> </td> <td> </td> <td> </td> <td> </td> </tr> </tbody> </table>		Rev.	Symbol	Date	Description																				
Rev.	Symbol	Date	Description																						
<table border="1"> <tr> <td>                 Designed by:                  WRM                  DWN/PJF             </td> <td>                 Checked by:                  GMR             </td> </tr> <tr> <td>                 File No.: W9125P-04-0-0004                  Date: JUN 2017             </td> <td>                 DEPARTMENT OF THE ARMY                  JACKSONVILLE DISTRICT, CORPS OF ENGINEERS                  JACKSONVILLE, FLORIDA             </td> </tr> </table>		Designed by: WRM DWN/PJF	Checked by: GMR	File No.: W9125P-04-0-0004 Date: JUN 2017	DEPARTMENT OF THE ARMY JACKSONVILLE DISTRICT, CORPS OF ENGINEERS JACKSONVILLE, FLORIDA																				
Designed by: WRM DWN/PJF	Checked by: GMR																								
File No.: W9125P-04-0-0004 Date: JUN 2017	DEPARTMENT OF THE ARMY JACKSONVILLE DISTRICT, CORPS OF ENGINEERS JACKSONVILLE, FLORIDA																								
OKEECHOBEE WATERWAY, FLORIDA <b>HYDRO EXAMINATION SURVEY FY17</b> <b>6 AND 8-FOOT PROJECT</b> ROUTE-1 (CROSS-LAKE CHANNEL) <b>PLAN</b>																									
Scale: AS SHOWN Drawing no. <b>109</b>																									
SHEET 109 OF 133																									



NOTES:  
 1. REFER TO SURVEY NO. 17-121.  
 2. SEE SHEET NO. 1 FOR SURVEY NOTES.



US Army Corps of Engineers Jacksonville District		
SAFETY ON THIS JOB DEPENDS ON YOU		

DEPARTMENT OF THE ARMY  
JACKSONVILLE DISTRICT, CORPS OF ENGINEERS  
JACKSONVILLE, FLORIDA

Designed by: WRM  
 Drawn by: WRM  
 Checked by: WRM  
 Date: JUN 2017  
 File Name: 17-12-HVHSH110.DGN

OKEECHOBEE WATERWAY, FLORIDA  
**HYDRO EXAMINATION SURVEY FY17  
6 AND 8-FOOT PROJECT**  
 ROUTE-1 (CROSS-LAKE CHANNEL)  
**PLAN**

Scale: AS SHOWN  
 Drawing no.  
**110**  
 SHEET 110 OF 133

GRAPHIC SCALE  
100' 0 100' 200'

NOTES:  
1. REFER TO SURVEY NO. 17-121.  
2. SEE SHEET NO. 1 FOR SURVEY NOTES.

