

# LAKE OKEECHOBEE ROUTE-1 (CROSS-LAKE) & ROUTE-2 (RIM CANAL) EXAM SURVEY FY17 6 AND 8-FOOT PROJECT

LEGEND	
	MONUMENT
	LIGHTED BEACON
	GREEN DAYBEACON
	RED DAYBEACON
	RED LIGHTED BUOY
	GREEN LIGHTED BUOY
	CAN BUOY
	NUN BUOY
	TIDE STAFF
	PROJECT DEPTH

- SURVEY NOTES**
- REFER TO SURVEY NO. 17-121.
  - SOUNDINGS ARE IN FEET AND TENTHS AND REFER TO MEAN LAKE LEVEL (MLL) OF 12.56' ABOVE NGVD29. DAILY LAKE VALUES WERE RECORDED TO CALIBRATE ALL SOUNDINGS TO MLL.
  - TIDAL REDUCTIONS WERE OBTAINED DAILY FROM THE FOLLOWING WEBSITE: [HTTP://W3.SAJ.USACE.ARMY.MIL/H2O/REPORTS/R-OKE.HTML](http://w3.saj.usace.army.mil/h2o/reports/r-oke.html)
  - ALL ELEVATIONS ARE BELOW THE CHART DATUM UNLESS PRECEDED BY A (+) SIGN.
  - PLANE COORDINATES ARE BASED ON THE TRANSVERSE MERCATOR PROJECTION FOR THE EAST ZONE OF FLORIDA AND REFERENCED TO NORTH AMERICAN DATUM OF 1983 (NAD83).
  - THIS SURVEY WAS PERFORMED USING POST-PROCESSED POSPAC CORRECTIONS.
  - VERTICAL MEASUREMENTS WERE MADE USING AN EDGETECH 6205 COMBINED MULTI-BEAM SIDESCAN SONAR AND A ROSS 335 SINGLE-FREQUENCY 200 KHZ SINGLE-BEAM TRANSDUCER. SOUNDINGS SHOWN ARE IN HIGH FREQUENCY.
- | VESSEL | DATE OF SURVEY         | AREA                     |
|--------|------------------------|--------------------------|
| SB-44  | 25-27 APR, 02 MAY 2017 | CUT-1 (CROSS-LAKE)       |
| SB-40  | 02-04 MAY 2017         | CUT-2 (RIM CANAL)        |
| SB-44  | 03, 09 MAY 2017        | CLEWISTON TO MOORE HAVEN |
| SB-44  | 10-11, 16-16 MAY 2017  | CUT-2 (RIM CANAL)        |
- AIDS TO NAVIGATION WERE LOCATED DURING THIS SURVEY.
  - THE INFORMATION DEPICTED ON THIS MAP REPRESENTS THE RESULTS OF SURVEYS MADE ON THE DATES INDICATED ABOVE AND CAN ONLY BE CONSIDERED AS INDICATING THE GENERAL CONDITIONS AT THAT TIME. THIS CHART IS SOLELY FOR THE DISTRIBUTION OF AVAILABLE DEPTHS AT THE TIME OF THE SURVEY.
  - SURVEY ACCURACY PERFORMANCE STANDARDS, QUALITY CONTROL, AND QUALITY ASSURANCE REQUIREMENTS WERE FOLLOWED DURING THIS SURVEY IN ACCORDANCE WITH USACE EM 1110-2-1003, HYDROGRAPHIC SURVEYING, 30 NOV 13.

US Army Corps of Engineers  
Jacksonville District

SAFETY ON THIS JOB  
DEPENDS ON YOU

---

DEPARTMENT OF THE ARMY  
JACKSONVILLE DISTRICT, CORPS OF ENGINEERS  
JACKSONVILLE, FLORIDA

---

OKEECHOBEE WATERWAY, FLORIDA  
**HYDRO EXAMINATION SURVEY FY17  
6 AND 8-FOOT PROJECT**  
INDEX, LOCATION AND VICINITY  
MAP

---

Scale: AS SHOWN

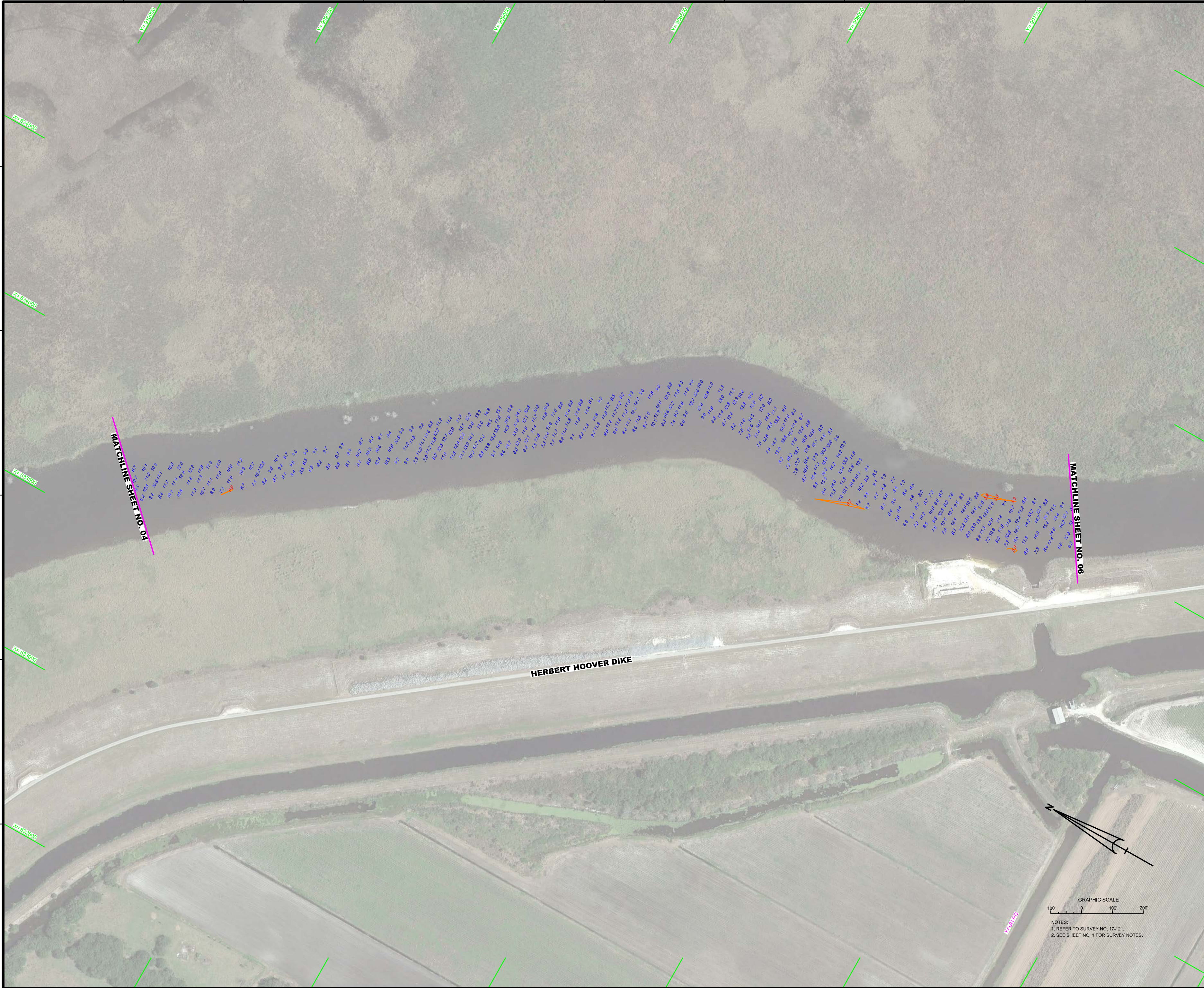
Drawing no.  
**1**


SHEET 01 OF 133











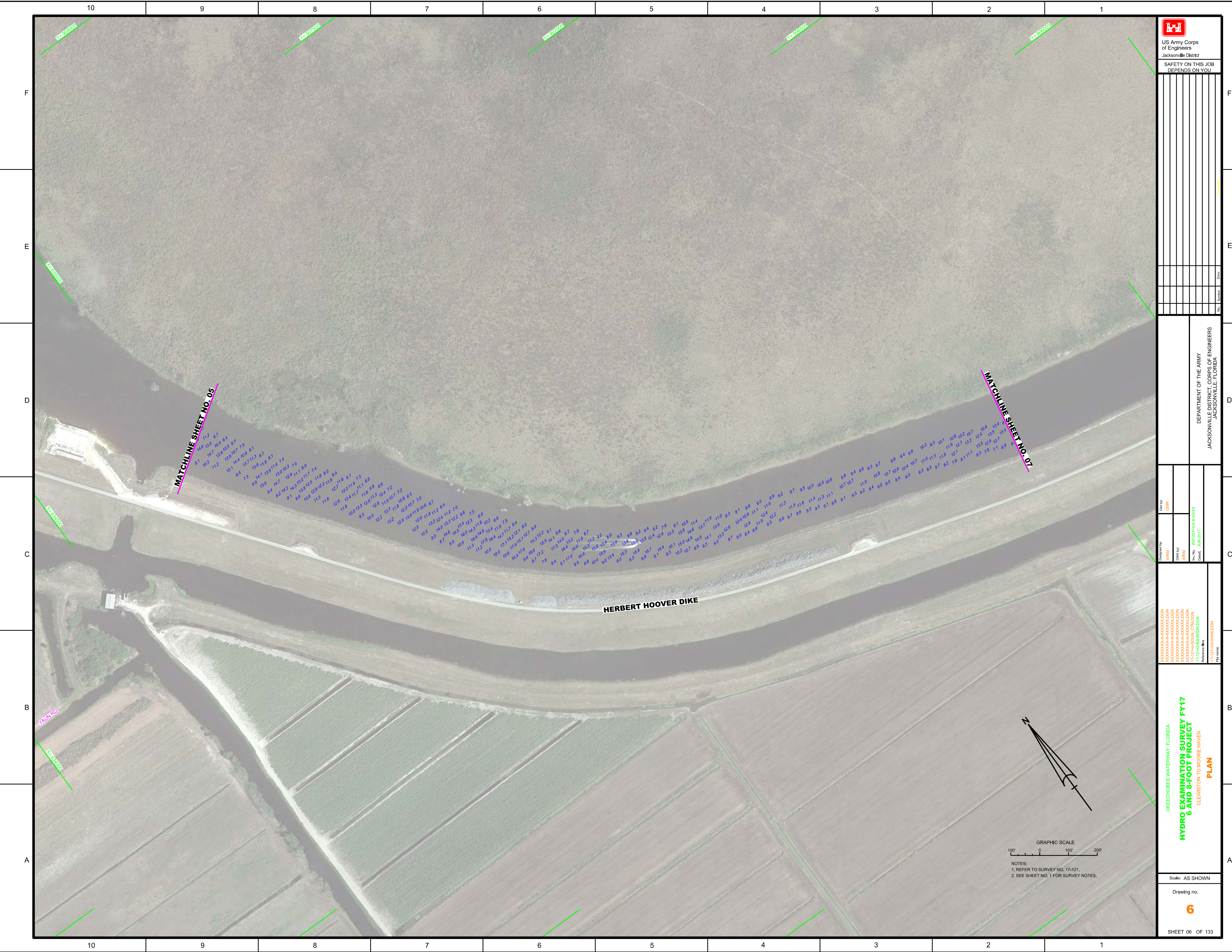
US Army Corps of Engineers  
Jacksonville District

SAFETY ON THIS JOB  
DEPENDS ON YOU

Title Block Project Name Drawing No.	Date Scale Author
DEPARTMENT OF THE ARMY JACKSONVILLE DISTRICT, CORPS OF ENGINEERS JACKSONVILLE, FLORIDA	
<b>OKEECHOBEE WATERWAY, FLORIDA</b> <b>HYDRO EXAMINATION SURVEY FY17</b> <b>6 AND 8-FOOT PROJECT</b> CLEWISTON TO MOORE HAVEN <b>PLAN</b>	
Scale: AS SHOWN Drawing no. <b>5</b>	
SHEET 05 OF 133	

GRAPHIC SCALE  
 100' 0 100' 200'

NOTES:  
 1. REFER TO SURVEY NO. 17-121.  
 2. SEE SHEET NO. 1 FOR SURVEY NOTES.



10 9 8 7 6 5 4 3 2 1

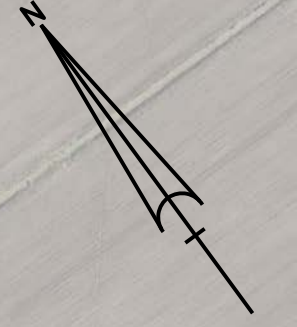
F  
E  
D  
C  
B  
A

VC 600700 VC 907500 VC 907000 VC 600500 VC 600000

MATCHLINE SHEET NO. 05

MATCHLINE SHEET NO. 07

HERBERT HOOVER DIKE



GRAPHIC SCALE  
100' 0 100' 200'  
NOTES:  
1. REFER TO SURVEY NO. 17-121.  
2. SEE SHEET NO. 1 FOR SURVEY NOTES.

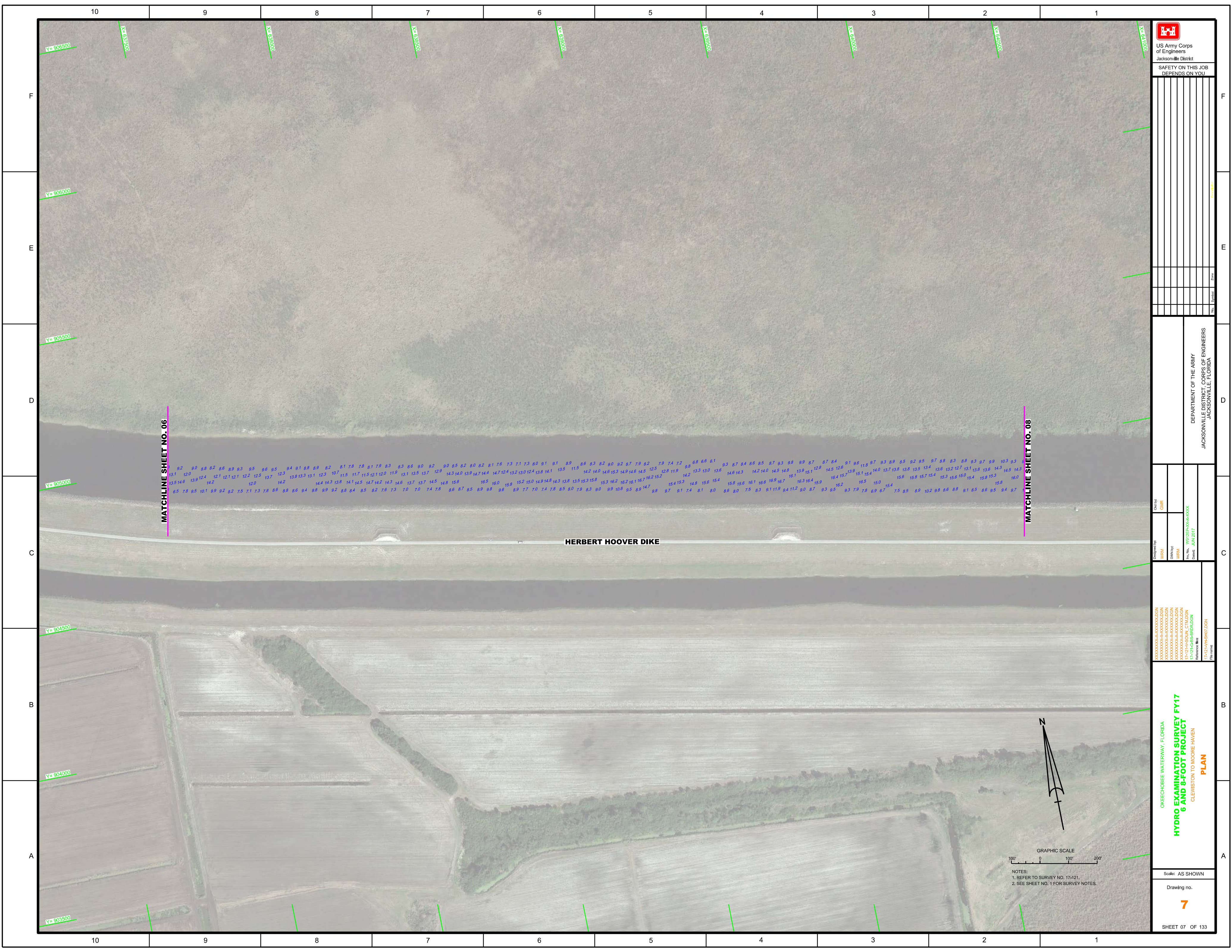
US Army Corps of Engineers  
Jacksonville District  
SAFETY ON THIS JOB DEPENDS ON YOU


DEPARTMENT OF THE ARMY  
JACKSONVILLE DISTRICT, CORPS OF ENGINEERS  
JACKSONVILLE, FLORIDA

Designed by: WRM  
Drawn by: WRM  
Checked by: WRM  
Date: JUN 2017  
File name: 17-121-6-S-8-06-000.DGN  
Reference files: 17-121-6-S-8-06-000.DGN

OKECHOBEE WATERWAY, FLORIDA  
**HYDRO EXAMINATION SURVEY FY17  
6 AND 8-FOOT PROJECT**  
CLEWISTON TO MOORE HAVEN  
PLAN

Scale: AS SHOWN  
Drawing no. **6**  
SHEET 06 OF 133

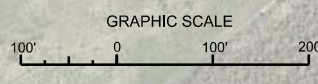


MATCHLINE SHEET NO. 06

MATCHLINE SHEET NO. 08

**HERBERT HOOVER DIKE**

92 90 88 82 86 89 93 95 96 95 94 91 88 89 82 81 78 78 81 79 83 83 86 90 92 90 85 82 80 82 81 76 73 71 73 80 81 81 89 86 83 82 90 92 87 79 82 79 74 72 98 88 66 61 93 87 84 86 85 87 93 98 99 87 87 84 81 98 118 97 93 89 85 92 95 97 88 83 88 93 87 89 103 93 31 120 121 121 121 122 125 137 123 138 133 131 123 107 115 117 115 121 120 119 131 135 137 129 143 140 139 147 144 147 124 132 130 124 138 141 135 115 142 140 146 153 149 146 145 125 128 119 98 133 130 136 146 143 142 140 145 148 139 151 128 145 126 164 157 139 151 154 140 137 138 138 135 134 136 132 127 131 138 136 143 145 143 135 146 142 142 120 142 144 143 138 141 145 147 142 143 146 137 137 145 148 158 165 160 158 152 150 149 148 143 138 135 153 158 153 162 162 161 167 162 152 142 154 153 148 156 154 158 156 161 168 169 167 161 163 164 159 164 162 165 150 154 156 158 167 154 153 156 150 154 158 153 160 65 78 95 101 99 92 82 75 71 73 78 86 88 86 94 98 99 82 88 84 85 82 76 73 70 70 74 78 86 87 85 89 98 86 89 77 70 74 78 85 80 79 83 90 99 108 95 89 147 98 97 91 74 81 80 86 80 75 83 91 119 94 112 90 87 93 95 93 79 78 69 67 75 85 89 102 98 86 68 91 85 86 95 94 97



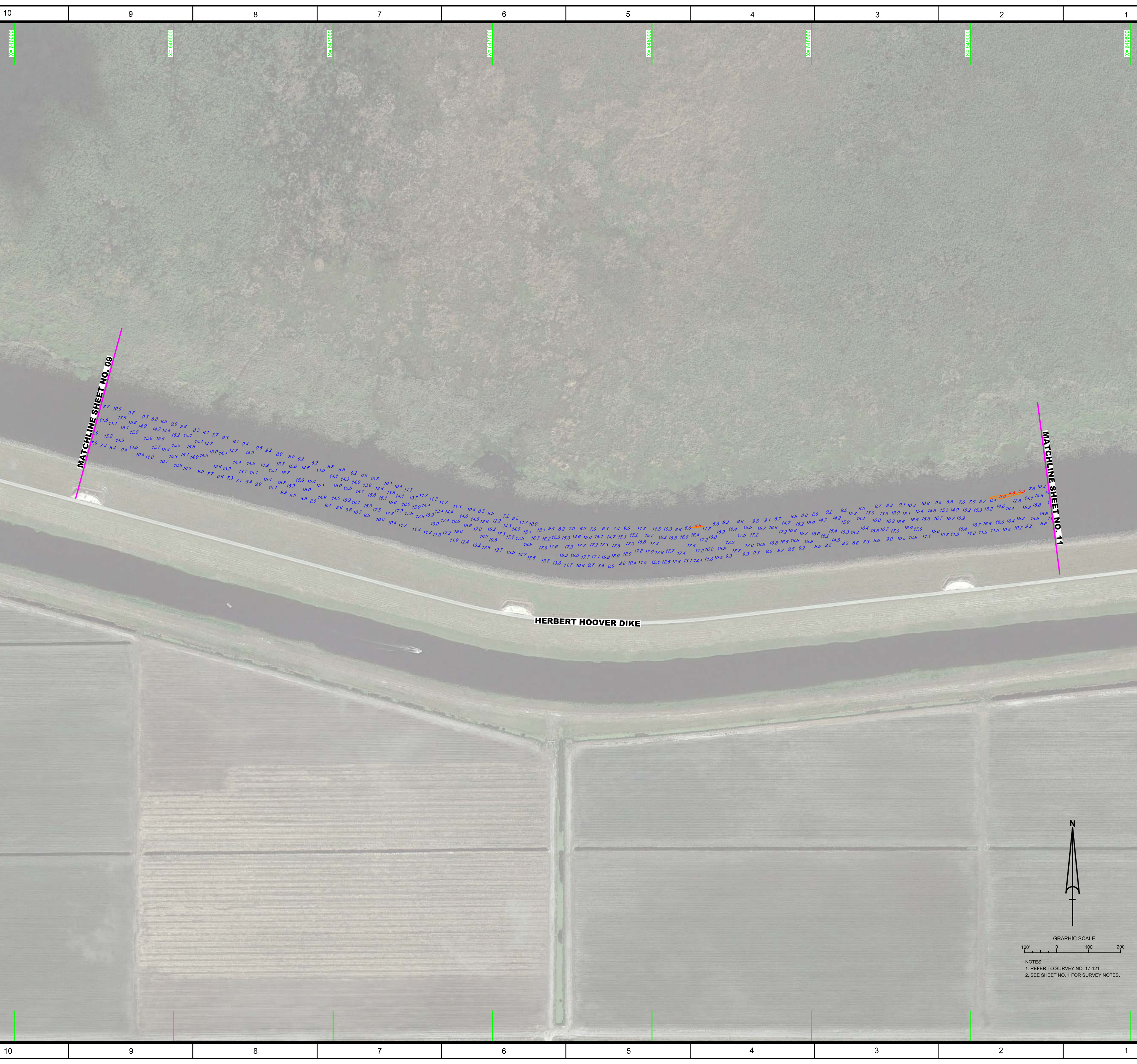
NOTES:  
 1. REFER TO SURVEY NO. 17-121.  
 2. SEE SHEET NO. 1 FOR SURVEY NOTES.

US Army Corps of Engineers Jacksonville District SAFETY ON THIS JOB DEPENDS ON YOU	
DEPARTMENT OF THE ARMY JACKSONVILLE DISTRICT, CORPS OF ENGINEERS JACKSONVILLE, FLORIDA	
Drawn by: WRM Designated by: WRM Checked by: WRM	Date: JUN 2017 Project: 17-121-6-6B-8-FOOT File name: 17-121-6-6B-8-FOOT.DGN
<b>OKECHOBEE WATERWAY, FLORIDA</b> <b>HYDRO EXAMINATION SURVEY FY17</b> <b>6 AND 8-FOOT PROJECT</b> CLEWISTON TO MOORE HAVEN <b>PLAN</b>	
Scale: AS SHOWN Drawing no. <b>7</b> SHEET 07 OF 133	









US Army Corps  
of Engineers  
Jacksonville District

SAFETY ON THIS JOB  
DEPENDS ON YOU

File Name	Zone	Scale

DEPARTMENT OF THE ARMY  
JACKSONVILLE DISTRICT, CORPS OF ENGINEERS  
JACKSONVILLE, FLORIDA

Client: GMR  
 Designed by: WRM  
 DWG File: WRM-2017-06-14-1000  
 File Name: 17-1216-06-08-01-DGN  
 Date: JUN 2017  
 Reference File: 17-1216-06-08-01-DGN

OKEECHOBEE WATERWAY, FLORIDA  
**HYDRO EXAMINATION SURVEY FY17**  
**6 AND 8-FOOT PROJECT**  
 CLEWISTON TO MOORE HAVEN  
**PLAN**

Scale: AS SHOWN

Drawing no.  
**10**



GRAPHIC SCALE  
0 100' 200'

NOTES:  
1. REFER TO SURVEY NO. 17-121.  
2. SEE SHEET NO. 1 FOR SURVEY NOTES.



US Army Corps of Engineers  
Jacksonville District

SAFETY ON THIS JOB  
DEPENDS ON YOU

	Zone
	Scale
	Symbol
	Units
	North
	Sheet

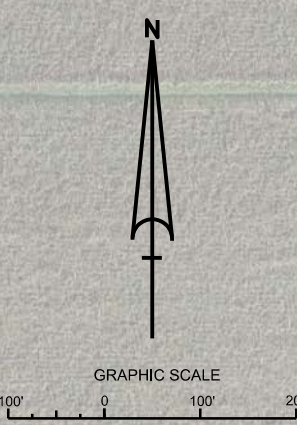
DEPARTMENT OF THE ARMY  
JACKSONVILLE DISTRICT, CORPS OF ENGINEERS  
JACKSONVILLE, FLORIDA

Designed by: **WRM**  
 Drawn by: **WRM**  
 Checked by: **WRM**  
 Date: JUN 2017

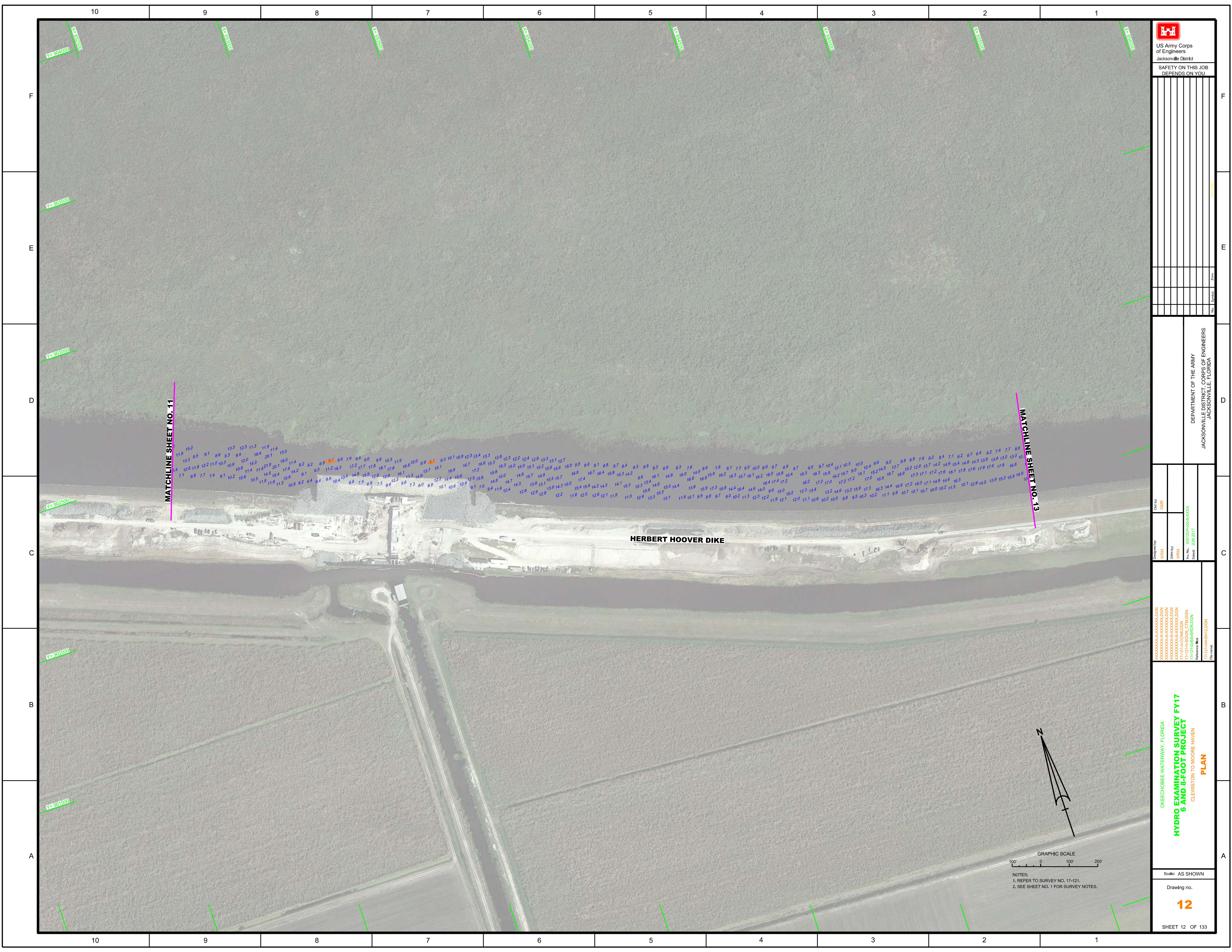
File Name: **W81255-6-9-000**  
 Project No: **W81255-6-9-000**  
 Reference File: **17-121-6-8-BB-97-1-01**  
 File Name: **17-121-6-8-BB-97-1-01.DGN**


OKECHOBEE WATERWAY, FLORIDA  
**HYDRO EXAMINATION SURVEY FY17**  
**6 AND 8-FOOT PROJECT**  
 CLEWISTON TO MOORE HAVEN  
**PLAN**

Scale: AS SHOWN  
 Drawing no.  
**11**  
 SHEET 11 OF 133



NOTES:  
1. REFER TO SURVEY NO. 17-121.  
2. SEE SHEET NO. 1 FOR SURVEY NOTES.



 US Army Corps of Engineers  
Jacksonville District

SAFETY ON THIS JOB  
DEPENDS ON YOU

No.	Symbol	Zone

DEPARTMENT OF THE ARMY  
JACKSONVILLE DISTRICT, CORPS OF ENGINEERS  
JACKSONVILLE, FLORIDA

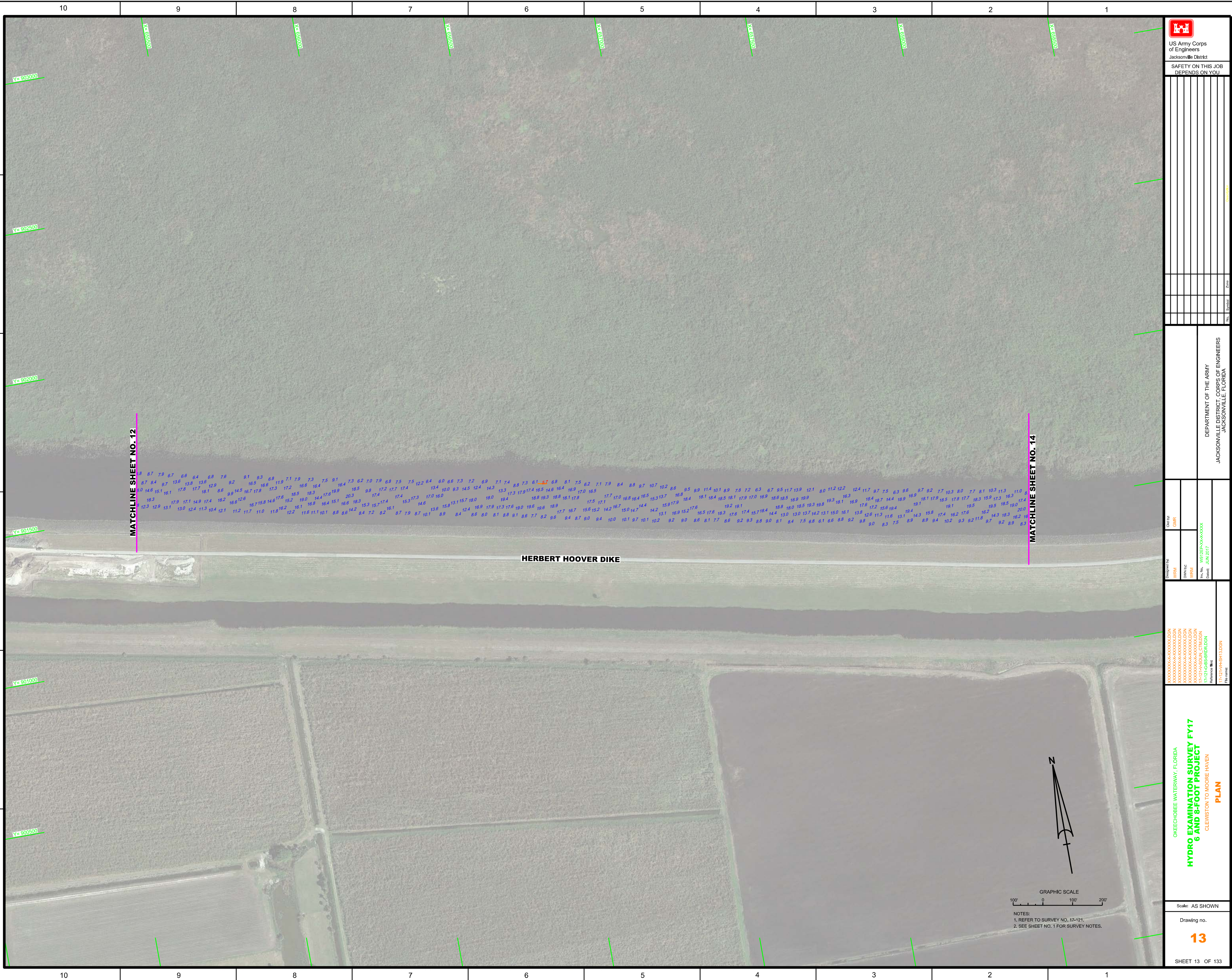
Checked by: GMR  
Designed by: WRM  
Drawn by: WRM  
File No.: 17-1214-68-00-00-0000  
Date: JUN 2017

OKEECHOBEE WATERWAY, FLORIDA  
**HYDRO EXAMINATION SURVEY FY17  
6 AND 8-FOOT PROJECT**  
CLEWISTON TO MOORE HAVEN  
**PLAN**

Scale: AS SHOWN  
Drawing no.  
**12**  
SHEET 12 OF 133



NOTES:  
1. REFER TO SURVEY NO. 17-121.  
2. SEE SHEET NO. 1 FOR SURVEY NOTES.



MATCHLINE SHEET NO. 12

MATCHLINE SHEET NO. 14

HERBERT HOOVER DIKE

GRAPHIC SCALE  
 0 100 200  
 Scale: AS SHOWN

NOTES:  
 1. REFER TO SURVEY NO. 17-121.  
 2. SEE SHEET NO. 1 FOR SURVEY NOTES.

**US Army Corps of Engineers**  
 Jacksonville District  
**SAFETY ON THIS JOB DEPENDS ON YOU**

No.	Symbol	Zone

DEPARTMENT OF THE ARMY  
 JACKSONVILLE DISTRICT, CORPS OF ENGINEERS  
 JACKSONVILLE, FLORIDA

Drawn by: GMR  
 DWG No: 1712145500A  
 File No: 1712145500A  
 Date: JUN 2017

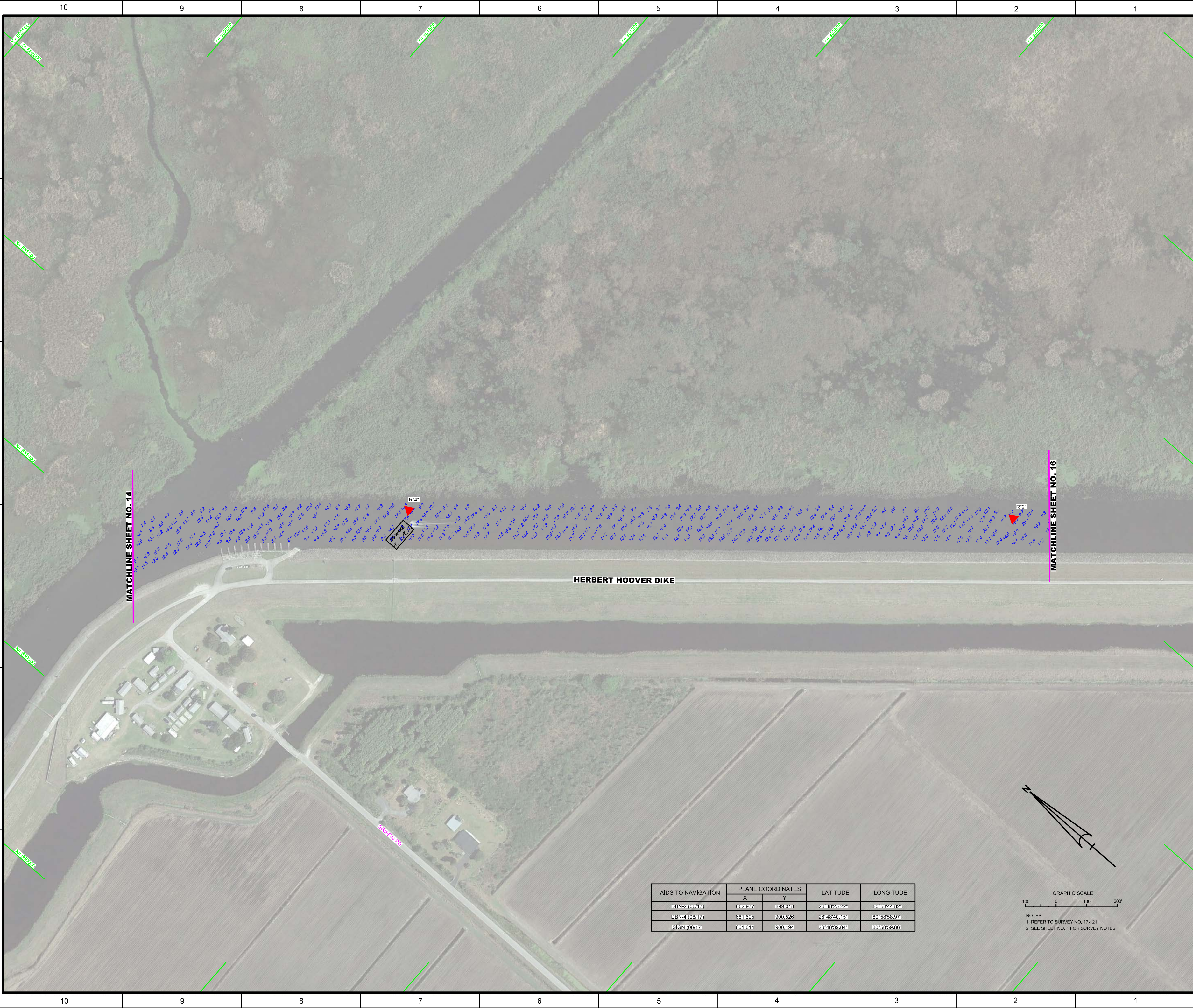
Designed by: WRM  
 DWG No: 1712145500A  
 File No: 1712145500A  
 Date: JUN 2017

XXXXXXXXXXXXXXXXXXXX.DGN  
 XXXXXXXXXXXXXXXXXXXX.DGN  
 XXXXXXXXXXXXXXXXXXXX.DGN  
 XXXXXXXXXXXXXXXXXXXX.DGN  
 1712145500A.dwg  
 1712145500A.dwg  
 1712145500A.dwg  
 Reference files:  
 1712145500A.dwg

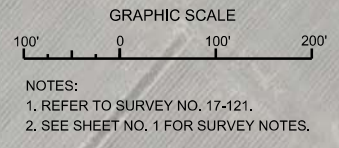
OKECHOBEE WATERWAY, FLORIDA  
**HYDRO EXAMINATION SURVEY FY17**  
**6 AND 8-FOOT PROJECT**  
 CLEWISTON TO MOORE HAVEN  
**PLAN**

Drawing no.  
**13**  
 SHEET 13 OF 133





AIDS TO NAVIGATION	PLANE COORDINATES		LATITUDE	LONGITUDE
	X	Y		
DBN-2 (06/17)	662,977	899,018	26°48'25.22"	80°58'44.82"
DBN-4 (06/17)	661,695	900,526	26°48'40.15"	80°58'58.97"
SIGN (06/17)	661,614	900,494	26°48'39.84"	80°58'59.86"



**US Army Corps of Engineers**  
Jacksonville District

SAFETY ON THIS JOB  
DEPENDS ON YOU

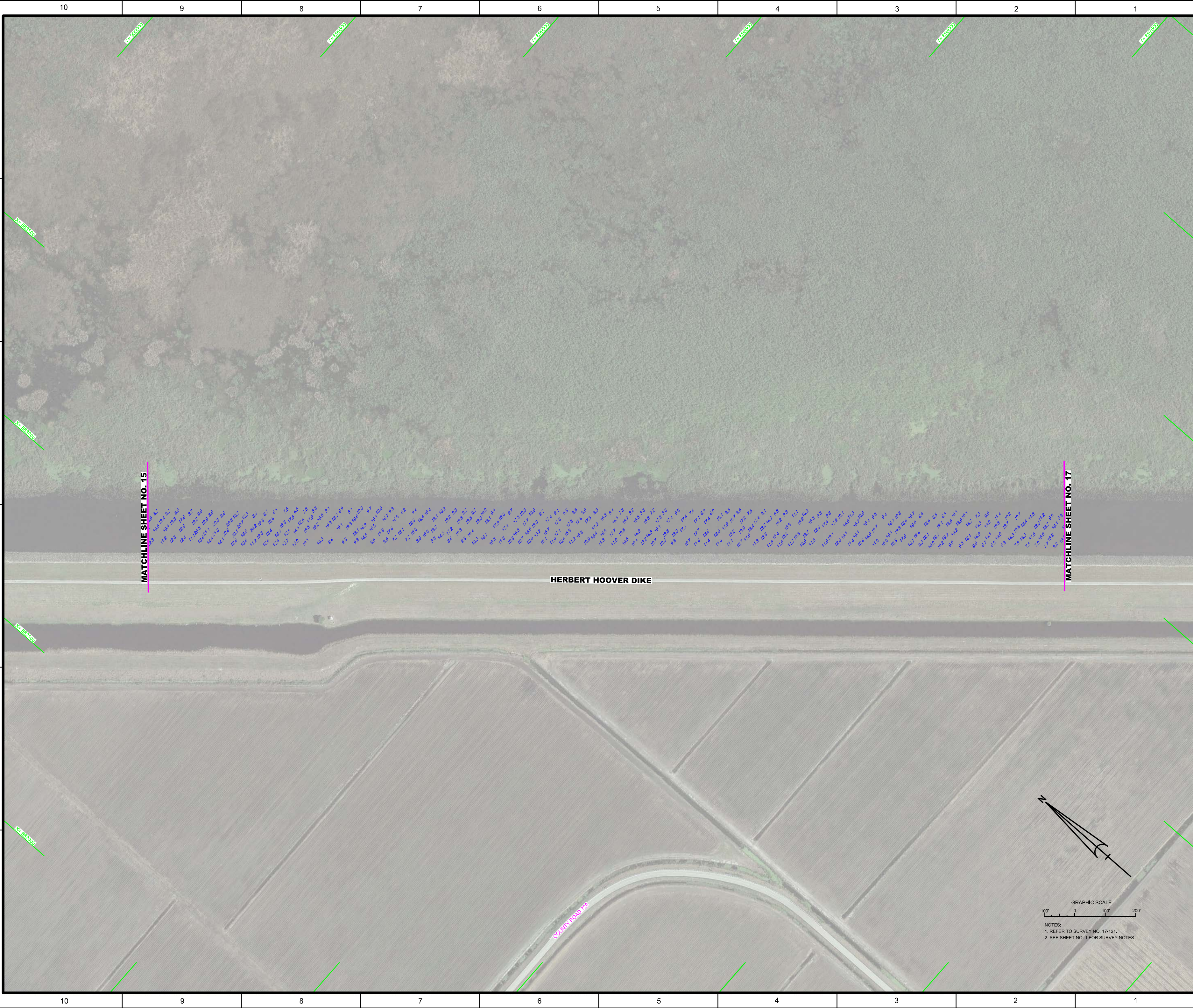

DEPARTMENT OF THE ARMY  
JACKSONVILLE DISTRICT, CORPS OF ENGINEERS  
JACKSONVILLE, FLORIDA

Checked By: GHR  
Designed By: WRM  
Drawn By: WRM  
File No: 17-121-500A-C7M-DGN  
Date: JUN 2017

XXXXXXXXXXXXXXXXXXXX  
XXXXXXXXXXXXXXXXXXXX  
XXXXXXXXXXXXXXXXXXXX  
XXXXXXXXXXXXXXXXXXXX  
XXXXXXXXXXXXXXXXXXXX  
17-121-500A-C7M-DGN  
Reference File:  
17-121-500A-C7M-DGN

OKEECHOBEE WATERWAY, FLORIDA  
**HYDRO EXAMINATION SURVEY FY17**  
**6 AND 8-FOOT PROJECT**  
CLEWISTON TO MOORE HAVEN  
**PLAN**

Scale: AS SHOWN  
Drawing no.  
**15**  
SHEET 15 OF 133

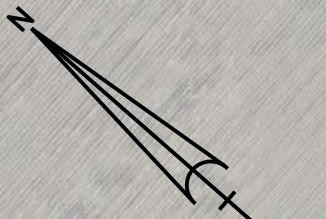


MATCHLINE SHEET NO. 15

MATCHLINE SHEET NO. 17

HERBERT HOOVER DIKE

COUNTY ROAD 720




NOTES:  
 1. REFER TO SURVEY NO. 17-121.  
 2. SEE SHEET NO. 1 FOR SURVEY NOTES.

<p>US Army Corps of Engineers          Jacksonville District          SAFETY ON THIS JOB          DEPENDS ON YOU</p>	
<p>Designed by: WRM</p>	<p>Checked by: GHR</p>
<p>Drawn by: WRM</p>	<p>Project No.: 17-121-68-8B-816</p>
<p>Date: JUN 2017</p>	<p>Reference File: 17-121-68-8B-816.DGN</p>
<p>DEPARTMENT OF THE ARMY          JACKSONVILLE DISTRICT, CORPS OF ENGINEERS          JACKSONVILLE, FLORIDA</p>	
<p>OKECHOBEE WATERWAY, FLORIDA  <b>HYDRO EXAMINATION SURVEY FY17</b>  <b>6 AND 8-FOOT PROJECT</b>          CLEWISTON TO MOORE HAVEN  <b>PLAN</b></p>	
<p>Scale: AS SHOWN</p>	
<p>Drawing no.  <b>16</b></p>	
<p>SHEET 16 OF 133</p>	





 US Army Corps of Engineers Jacksonville District		
SAFETY ON THIS JOB DEPENDS ON YOU		

DEPARTMENT OF THE ARMY  
 JACKSONVILLE DISTRICT, CORPS OF ENGINEERS  
 JACKSONVILLE, FLORIDA

Designed by: <b>WRM</b>	Check by: <b>GHR</b>
Drawn by: <b>WRM</b>	File No.: <b>W1212-1-100-00100</b>
Date: <b>JUN 2017</b>	Reference File: <b>17121-1-100-00100</b>

**HYDRO EXAMINATION SURVEY FY17**  
**6 AND 8-FOOT PROJECT**  
**CLEWISTON TO MOORE HAVEN**  
**PLAN**

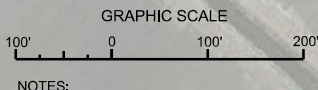
Scale: AS SHOWN  
 Drawing no.  
**17**

SHEET 17 OF 133

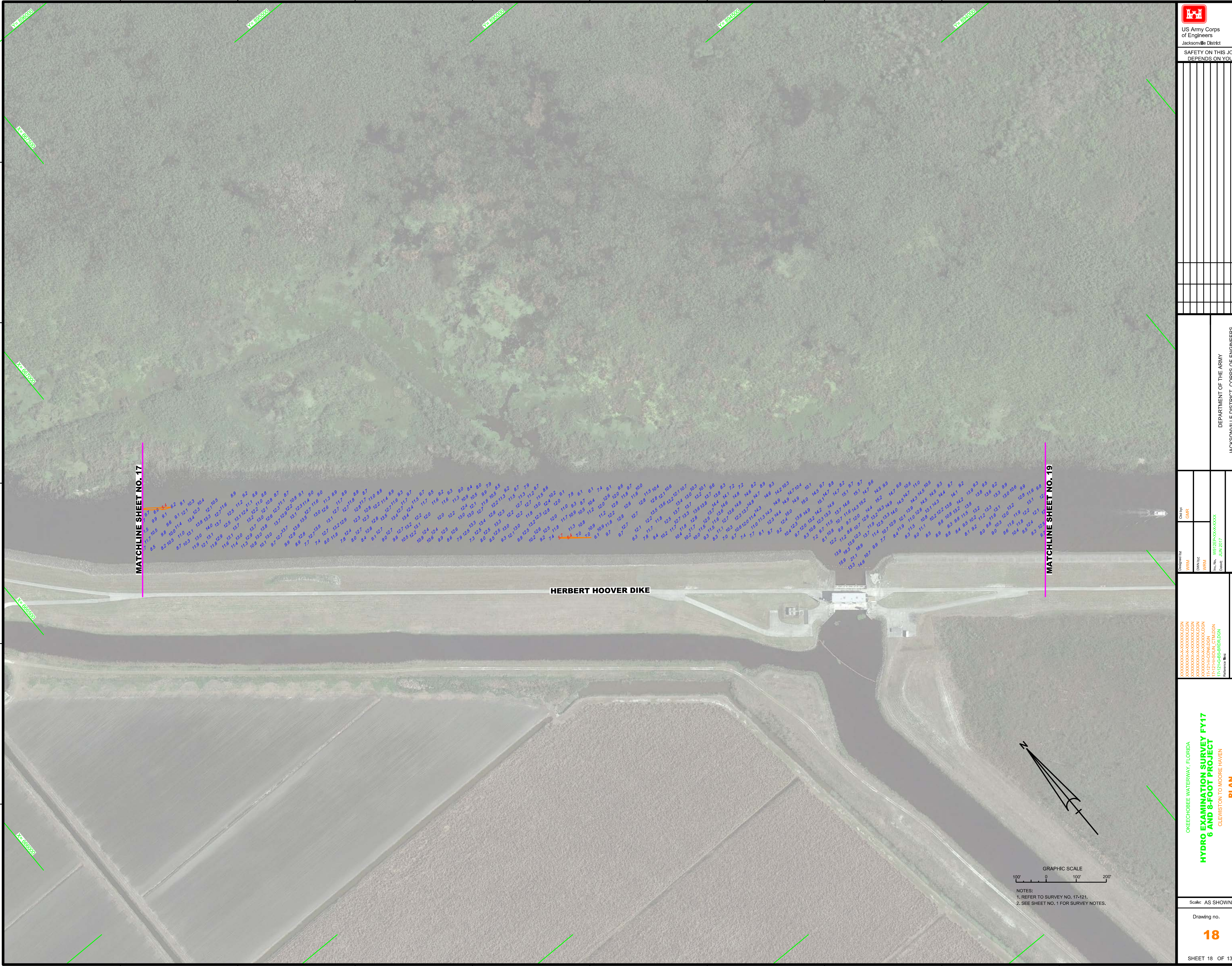
HERBERT HOOVER DIKE

MATCHLINE SHEET NO. 16

MATCHLINE SHEET NO. 18



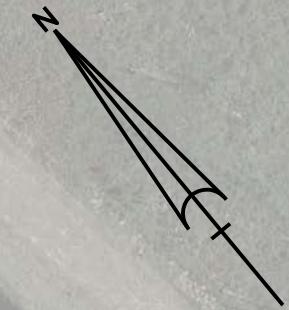
NOTES:  
 1. REFER TO SURVEY NO. 17-121.  
 2. SEE SHEET NO. 1 FOR SURVEY NOTES.



MATCHLINE SHEET NO. 17

MATCHLINE SHEET NO. 19

HERBERT HOOVER DIKE



GRAPHIC SCALE  
 0 100' 200'

NOTES:  
 1. REFER TO SURVEY NO. 17-21.  
 2. SEE SHEET NO. 1 FOR SURVEY NOTES.

<p>US Army Corps of Engineers        Jacksonville District</p>	
<p>SAFETY ON THIS JOB        DEPENDS ON YOU</p>	
<p>Sheet No.:</p>	<p>Scale:</p>
<p>Drawn By:</p>	<p>Checked By:</p>
<p>Project:</p>	<p>Zone:</p>
<p>DEPARTMENT OF THE ARMY        JACKSONVILLE DISTRICT, CORPS OF ENGINEERS        JACKSONVILLE, FLORIDA</p>	

Designed By: VRM  
 Drawn By: VRM  
 File No.: W81256-00-000  
 Date: JUN 2017

XX  
 XX  
 XX  
 XX  
 XX  
 W81256-00-000 CTM.DGN  
 W81256-00-000 CTM.DGN  
 Reference File:  
 W81256-00-000.DGN  
 File Name:

OKEECHOBEE WATERWAY, FLORIDA

**HYDRO EXAMINATION SURVEY FY17**

**6 AND 8-FOOT PROJECT**

CLEWISTON TO MOORE HAVEN

**PLAN**

Scale: AS SHOWN

Drawing no. **18**

SHEET 18 OF 133



<p>US Army Corps of Engineers Jacksonville District</p>	
<p>SAFETY ON THIS JOB DEPENDS ON YOU</p>	
<p>Drawn by: <b>WRM</b></p>	<p>Checked by: <b>GHR</b></p>
<p>Designed by: <b>WRM</b></p>	<p>Reviewed by: <b>WRM</b></p>
<p>File Name: <b>17-1216-SB-SR18.DGN</b></p>	<p>File Name: <b>17-1216-SB-SR18.DGN</b></p>
<p>Project: <b>17-1216-SB-SR18.DGN</b></p>	<p>Project: <b>17-1216-SB-SR18.DGN</b></p>
<p>Client: <b>DEPARTMENT OF THE ARMY JACKSONVILLE DISTRICT, CORPS OF ENGINEERS JACKSONVILLE, FLORIDA</b></p>	<p>Client: <b>DEPARTMENT OF THE ARMY JACKSONVILLE DISTRICT, CORPS OF ENGINEERS JACKSONVILLE, FLORIDA</b></p>
<p>Project: <b>OKEECHOBEE WATERWAY, FLORIDA HYDRO EXAMINATION SURVEY FY17 6 AND 8-FOOT PROJECT CLEWISTON TO MOORE HAVEN PLAN</b></p>	<p>Project: <b>OKEECHOBEE WATERWAY, FLORIDA HYDRO EXAMINATION SURVEY FY17 6 AND 8-FOOT PROJECT CLEWISTON TO MOORE HAVEN PLAN</b></p>
<p>Scale: <b>AS SHOWN</b></p>	<p>Scale: <b>AS SHOWN</b></p>
<p>Drawing no. <b>19</b></p>	<p>Drawing no. <b>19</b></p>
<p>SHEET 19 OF 133</p>	<p>SHEET 19 OF 133</p>

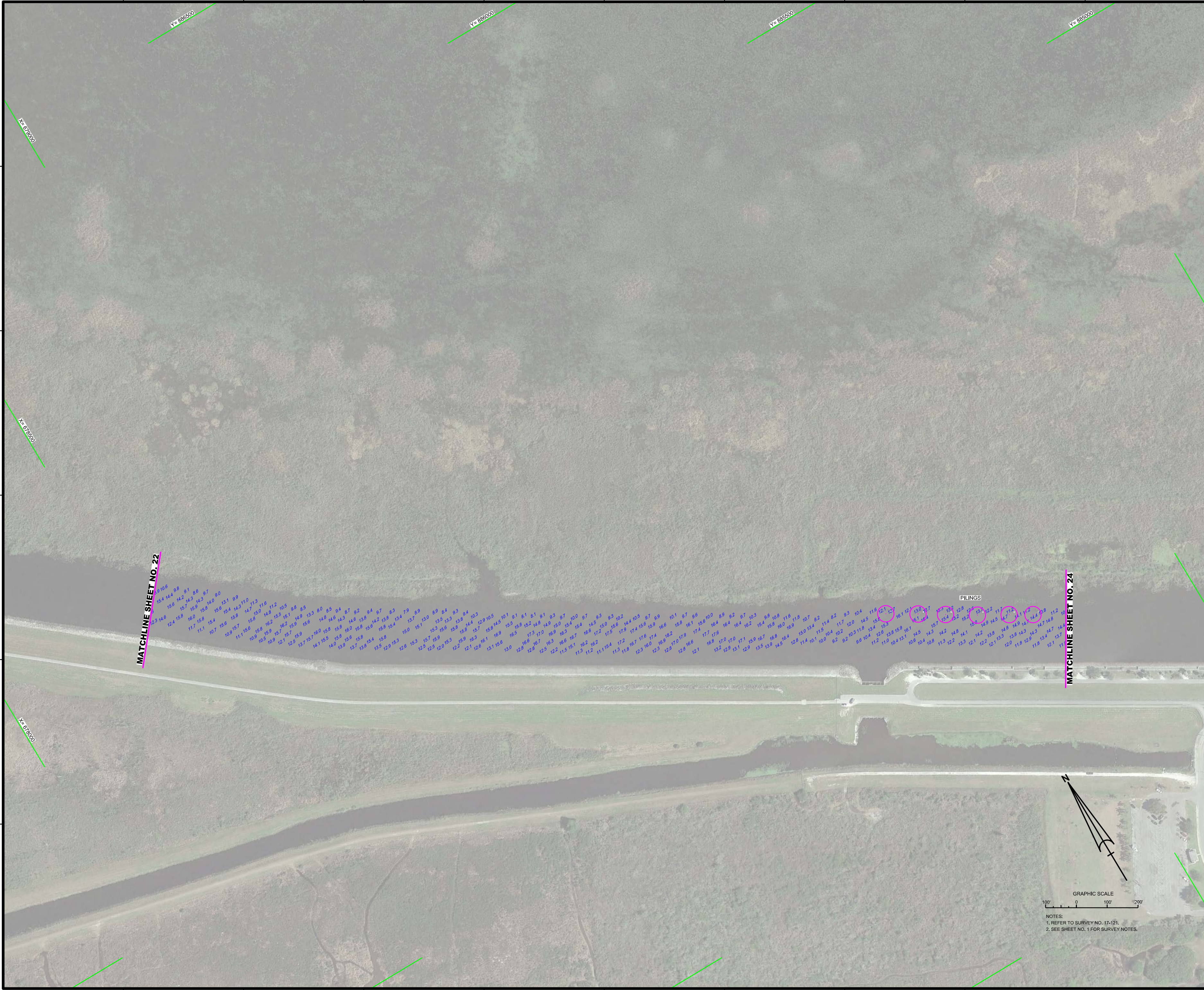
GRAPHIC SCALE  
100' 0 100' 200'

NOTES:  
1. REFER TO SURVEY NO. 17-121.  
2. SEE SHEET NO. 1 FOR SURVEY NOTES.





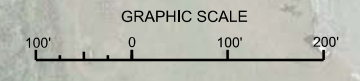




MATCHLINE SHEET NO. 22

MATCHLINE SHEET NO. 24

PILINGS



NOTES:  
 1. REFER TO SURVEY NO. 17-121.  
 2. SEE SHEET NO. 1 FOR SURVEY NOTES.

<p>US Army Corps of Engineers          Jacksonville District</p>	
<p>SAFETY ON THIS JOB          DEPENDS ON YOU</p>	
<p>Designed by: WRM</p>	<p>Checked by: GMR</p>
<p>DRAWN BY: WRM</p>	<p>DATE: JUN 2017</p>
<p>XXXXXXXXXXXXXXXXXXXX.DGN          XXXXXXXXXXXXXXXXXXXX.DGN          XXXXXXXXXXXXXXXXXXXX.DGN          XXXXXXXXXXXXXXXXXXXX.DGN          17-121-6-8-SUB-01.DGN          17-121-6-8-SUB-02.DGN          Reference files:          17-121-6-8-SUB-03.DGN</p>	
<p>DEPARTMENT OF THE ARMY          JACKSONVILLE DISTRICT, CORPS OF ENGINEERS          JACKSONVILLE, FLORIDA</p>	
<p>OKECHOBEE WATERWAY, FLORIDA  <b>HYDRO EXAMINATION SURVEY FY17          6 AND 8-FOOT PROJECT</b>          CLEWISTON TO MOORE HAVEN  <b>PLAN</b></p>	
<p>Scale: AS SHOWN</p>	
<p>Drawing no.  <b>X/X</b></p>	
<p>SHEET 23 OF 133</p>	