

CANAVERAL BARGE CANAL BREVARD COUNTY, FLORIDA EXAMINATION SURVEY FY17 12-FOOT PROJECT

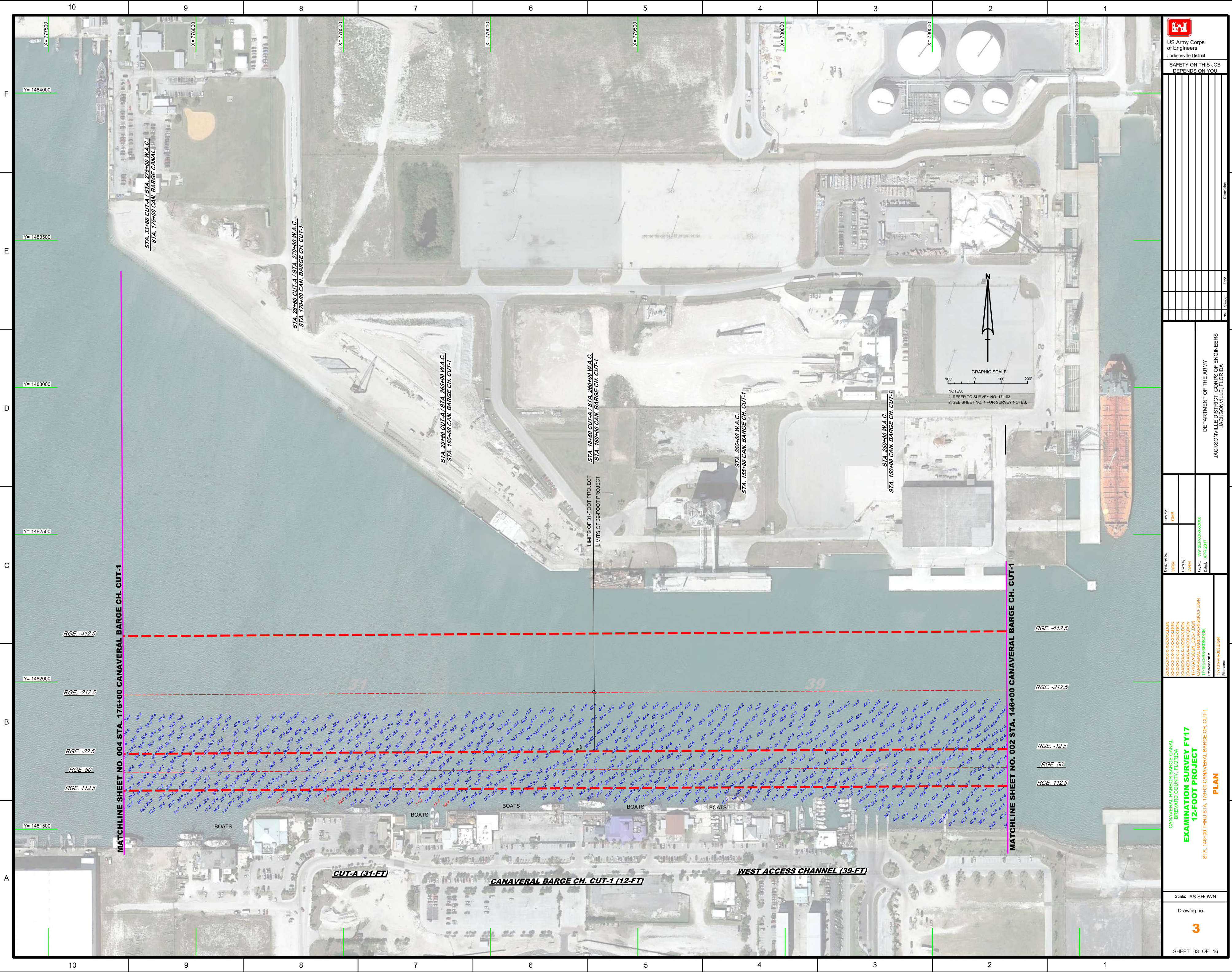
SURVEY NOTES

- REFER TO SURVEY NO. 17-103.
- DEPTHS DEPICTED BY THIS SURVEY ARE REFERENCED TO MLLW, TIDAL EPOCH 1983-2001 (EAST SIDE OF LOCK) AND MSL (WEST SIDE OF LOCK), AS REPORTED BY THE NATIONAL OCEANIC AND ATMOSPHERIC ADMINISTRATION (NOAA). NOAA'S VDATUM MODEL WAS USED AND CALIBRATED TO THE PUBLISHED MLLW / MSL HEIGHTS OF THE BENCH MARKS ASSOCIATED WITH THE TIDE GAGE SITES SPECIFIED BELOW:
NOAA TIDAL STATION 872-1804 (TRIDENT PIER, PORT CANAVERAL, FL) USED FOR EAST SIDE OF LOCK
NOAA TIDAL STATION 872-1533 (ORSINA, NASA CAUSEWAY, FL) USED FOR WEST SIDE OF LOCK
- TIDAL REDUCTIONS WERE OBTAINED UTILIZING A REAL-TIME KINEMATIC (RTK) GPS AND A HYPACK KINEMATIC TIDAL DATUM (KTD) MODEL. KTD FILE NAMES ARE:
"CANAVERALHBR-2015 02 20.KTD" (EAST SIDE OF LOCK)
"VOLUSIA-BREVARD\W-O_CANAVERALHBR_2016 05 06.KTD" (WEST SIDE OF LOCK)
- ALL ELEVATIONS ARE BELOW THE CHART DATUM UNLESS PRECEDED BY A (+) SIGN.
- PLANE COORDINATES ARE BASED ON THE TRANSVERSE MERCATOR PROJECTION FOR THE EAST ZONE OF FLORIDA AND REFERENCED TO NORTH AMERICAN DATUM OF 1983 (NAD83).
- ALL STATIONING REFERS TO THE CENTERLINE OF THE CHANNEL.
- THIS SURVEY WAS PERFORMED USING REAL-TIME KINEMATIC (RTK) GPS POSITIONING WITH THE FOLLOWING REFERENCE BASE LOCATION:
REFERENCE BASE LOCATED AT "CANAVERAL LOCK ARP" (OPUS PID: BBCV67)
TIDE STAFF LOCATED FROM "J JEFFORDS" (OPUS PID: BBCQ55) EAST SIDE OF LOCK
TIDE STAFF LOCATED FROM "GPS 1098" (OPUS PID: DG8073) WEST SIDE OF LOCK
- VERTICAL MEASUREMENTS WERE MADE USING A ROSS SMARTSOUNDER SINGLE-BEAM TRANSDUCER OPERATING AT 28200 KHZ AND A RESON MODEL T20P OPERATING AT 200400 KHZ. ALL SOUNDINGS SHOWN ARE IN HIGH FREQUENCY.
- VESSEL DATE OF SURVEY CUT
SB-36 17-19 APR 2017 CUTS 1-4
- AIDS TO NAVIGATION WERE LOCATED DURING THIS SURVEY.
- THE INFORMATION DEPICTED ON THIS MAP REPRESENTS THE RESULTS OF SURVEYS MADE ON THE DATES INDICATED ABOVE AND CAN ONLY BE CONSIDERED AS INDICATING THE GENERAL CONDITIONS AT THAT TIME. THIS CHART IS SOLELY FOR THE DISTRIBUTION OF AVAILABLE DEPTHS AT THE TIME OF THE SURVEY.
- SURVEY ACCURACY PERFORMANCE STANDARDS, QUALITY CONTROL, AND QUALITY ASSURANCE REQUIREMENTS WERE FOLLOWED DURING THIS SURVEY IN ACCORDANCE WITH USACE EM 1110-2-1003, HYDROGRAPHIC SURVEYING, 30 NOV 13.

LEGEND	
	MONUMENT
	LIGHTED BEACON
	GREEN DAYBEACON
	RED DAYBEACON
	RED LIGHTED BUOY
	GREEN LIGHTED BUOY
	CAN BUOY
	NUN BUOY
	TIDE STAFF
	PROJECT DEPTH

US Army Corps of Engineers
Jacksonville District
SAFETY ON THIS JOB
DEPENDS ON YOU

DEPARTMENT OF THE ARMY JACKSONVILLE DISTRICT, CORPS OF ENGINEERS JACKSONVILLE, FLORIDA	Drawn by: GHR Designated by: WRM Checked by: WRM Date: APR 2017	File Name: W02255-000-0000 Project: CANAVERAL HARBOR CANAL Reference: 17-103-00-000-0000	CANAVERAL HARBOR CANAL BREVARD COUNTY, FLORIDA EXAMINATION SURVEY FY17 12-FOOT PROJECT INDEX, LOCATION AND VICINITY MAP	Scale: AS SHOWN Drawing no. 1
SHEET 01 OF 16				



MATCHLINE SHEET NO. 004 STA. 176+00 CANAVERAL BARGE CH. CUT-1

MATCHLINE SHEET NO. 002 STA. 146+00 CANAVERAL BARGE CH. CUT-1

RGE -412.5
 RGE -212.5
 RGE -22.5
 RGE 50
 RGE 112.5

BOATS
 BOATS
 BOATS

31
 39

CUT-A (31-FT)
 CANAVERAL BARGE CH. CUT-1 (12-FT)
 WEST ACCESS CHANNEL (39-FT)

STA. 33+60 CUT-A / STA. 273+00 W.A.C.
 STA. 175+00 CAN. BARGE CH. CUT-1

STA. 28+60 CUT-A / STA. 270+00 W.A.C.
 STA. 170+00 CAN. BARGE CH. CUT-1

STA. 23+60 CUT-A / STA. 265+00 W.A.C.
 STA. 165+00 CAN. BARGE CH. CUT-1

STA. 19+60 CUT-A / STA. 260+00 W.A.C.
 STA. 160+00 CAN. BARGE CH. CUT-1

STA. 155+00 W.A.C.
 STA. 155+00 CAN. BARGE CH. CUT-1

STA. 250+00 W.A.C.
 STA. 150+00 CAN. BARGE CH. CUT-1

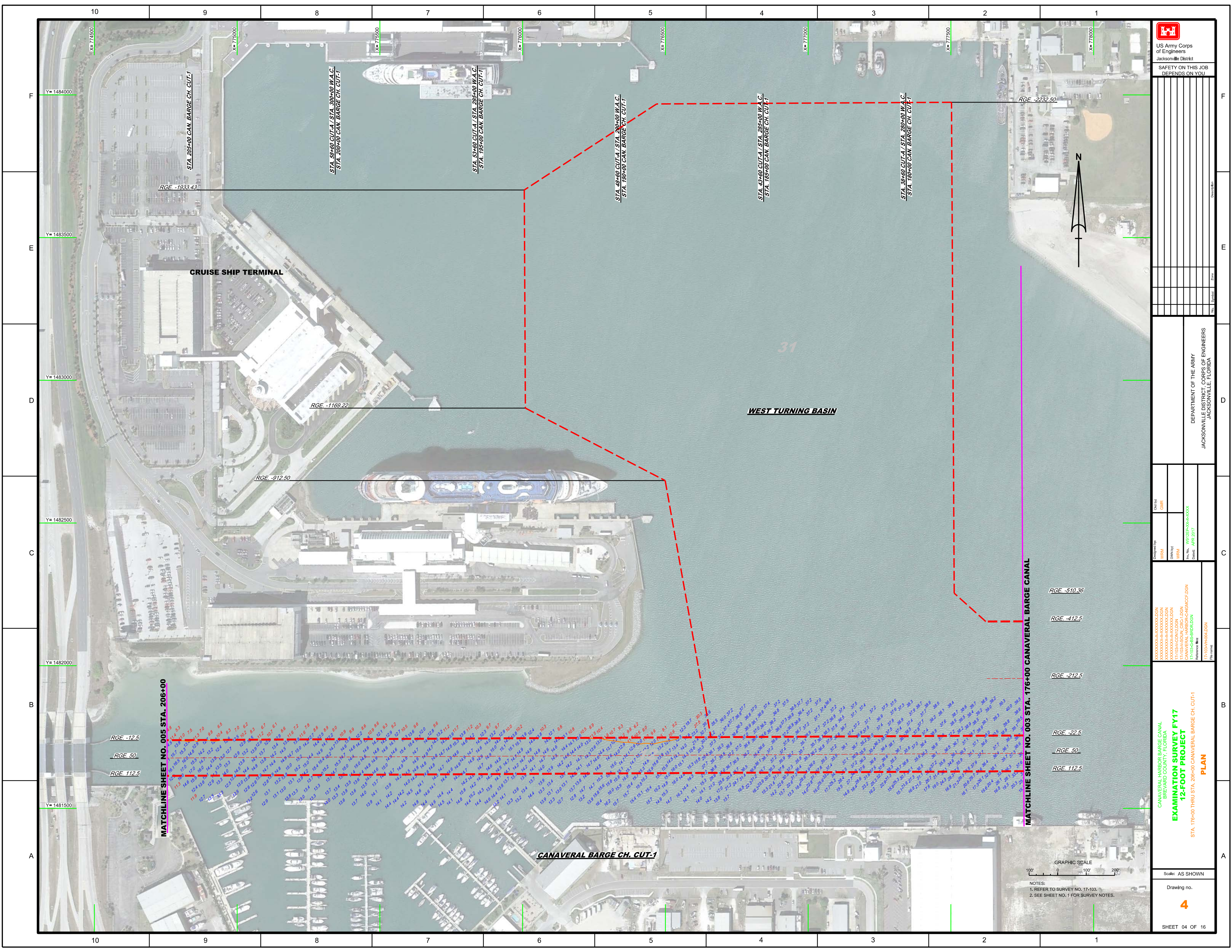
LIMITS OF 31-FOOT PROJECT
 LIMITS OF 39-FOOT PROJECT



GRAPHIC SCALE
 100' 0 100' 200'

NOTES:
 1. REFER TO SURVEY NO. 17-103.
 2. SEE SHEET NO. 1 FOR SURVEY NOTES.

<p>US Army Corps of Engineers Jacksonville District SAFETY ON THIS JOB DEPENDS ON YOU</p>	
<p>Drawn by: WRM</p> <p>Checked by: GHR</p>	<p>Designated by: WRM</p> <p>Drawn by: WRM</p> <p>Checked by: WRM</p>
<p>File Name: 17-103-BS-BR04.DGN</p> <p>Reference File: 17-103-BS-BR04.DGN</p>	
<p>Project Name: EXAMINATION SURVEY FY17 12-FOOT PROJECT</p> <p>Location: STA. 146+00 THRU STA. 176+00 CANAVERAL BARGE CH. CUT-1</p> <p>Plan Name: PLAN</p>	
<p>Scale: AS SHOWN</p> <p>Drawing no. 3</p> <p>SHEET 03 OF 16</p>	



MATCHLINE SHEET NO. 005 STA. 206+00

MATCHLINE SHEET NO. 003 STA. 176+00 CANAVERAL BARGE CANAL

CANAVERAL BARGE CH. CUT-1

CRUISE SHIP TERMINAL

WEST TURNING BASIN

RGE -2232.50

RGE -510.36

RGE -412.5

RGE -212.5

RGE -22.5

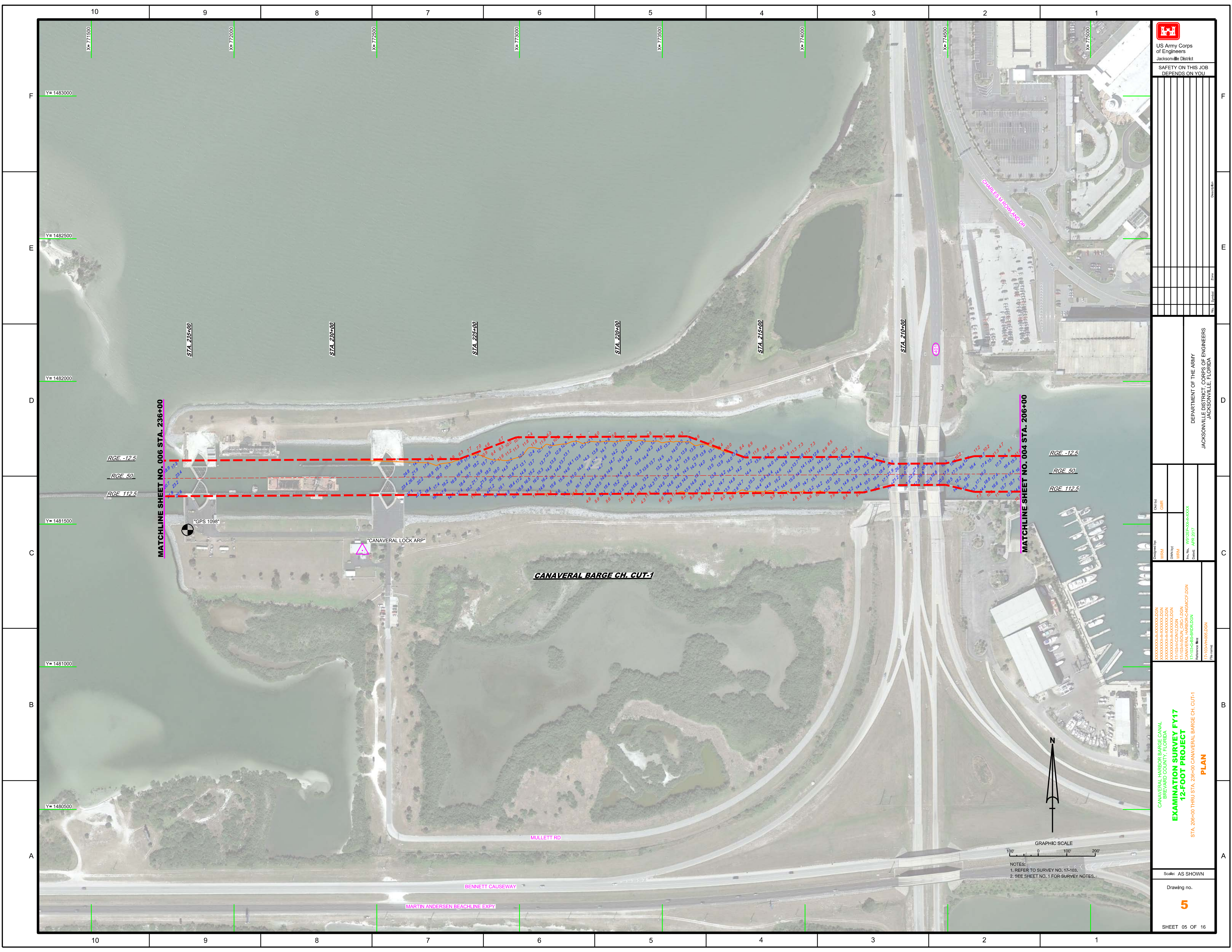
RGE 50

RGE 112.5

GRAPHIC SCALE
 100' 0 100 200'

NOTES:
 1. REFER TO SURVEY NO. 17-103.
 2. SEE SHEET NO. 1 FOR SURVEY NOTES.

<p>US Army Corps of Engineers Jacksonville District</p> <p>SAFETY ON THIS JOB DEPENDS ON YOU</p>	
<p>Designed by WRM</p> <p>Checked by GHR</p> <p>Drawn by WRM</p> <p>Plot Date APR 2017</p> <p>Reference File 17-103-BS-BSR10.DGN</p>	<p>Department of the Army Jacksonville District, Corps of Engineers Jacksonville, Florida</p>
<p>CANAVERAL HARBOR BARGE CANAL BREVARD COUNTY, FLORIDA EXAMINATION SURVEY FY17 12-FOOT PROJECT PLAN</p> <p>STA. 176+00 THRU STA. 206+00 CANAVERAL BARGE CH. CUT-1</p>	
Scale: AS SHOWN	Drawing no. 4
SHEET 04 OF 16	



No.	Symbol	Zone	Description

DEPARTMENT OF THE ARMY
JACKSONVILLE DISTRICT, CORPS OF ENGINEERS
JACKSONVILLE, FLORIDA

Checked by: GHR
Designed by: WRM
Drawn by: WRM
File No: W12356-00-000-000
Date: APR 2017
Reference files:
17-103A-H080.DGN
17-103A-H090.DGN
17-103A-H100.DGN
17-103A-H110.DGN
17-103A-H120.DGN
17-103A-H130.DGN
17-103A-H140.DGN
17-103A-H150.DGN
17-103A-H160.DGN
17-103A-H170.DGN
17-103A-H180.DGN
17-103A-H190.DGN
17-103A-H200.DGN

CANAVERAL HARBOR BARGE CANAL
BREVARD COUNTY, FLORIDA
EXAMINATION SURVEY FY17
12-FOOT PROJECT
PLAN
STA. 206+00 THRU STA. 236+00 CANAVERAL BARGE CH. CUT-1

GRAPHIC SCALE
100' 0 100' 200'
NOTES:
1. REFER TO SURVEY NO. 17-103.
2. SEE SHEET NO. 1 FOR SURVEY NOTES.



CANAVERAL BARGE CH. CUT-1

MATCHLINE SHEET NO. 006 STA. 236+00

MATCHLINE SHEET NO. 004 STA. 206+00

RGE -12.5
RGE 50
RGE 112.5

RGE -12.5
RGE 50
RGE 112.5

STA. 235+00 STA. 230+00 STA. 225+00 STA. 220+00 STA. 215+00 STA. 210+00

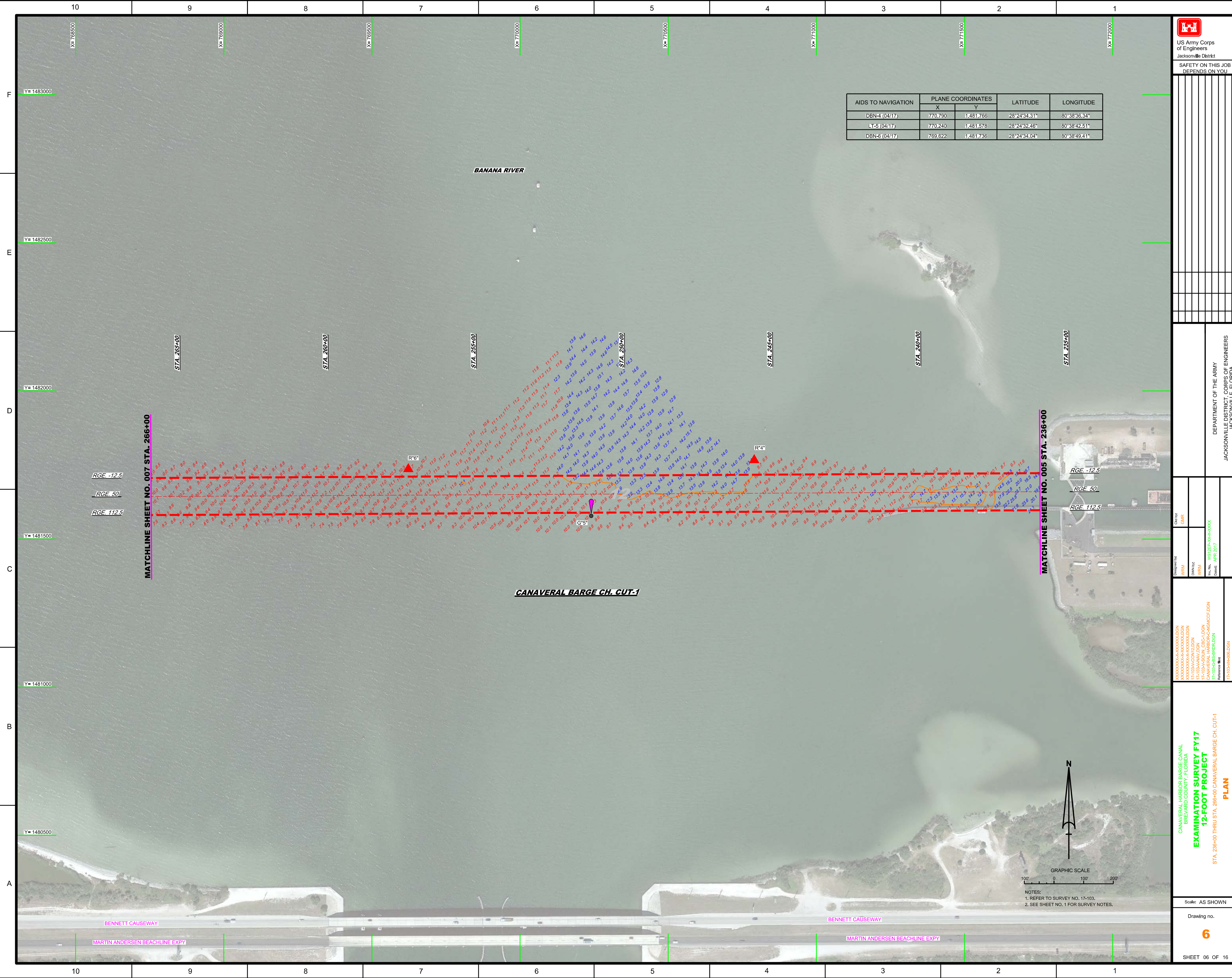
MULLETT RD
BENNETT CAUSEWAY
MARTIN ANDERSEN BEACHLINE EXPY

CHARLES McFOWLER DR

STA. 210+00



GPS 1098
CANAVERAL LOCK ARP



AIDS TO NAVIGATION	PLANE COORDINATES		LATITUDE	LONGITUDE
	X	Y		
DBN-1 (0417)	770.790	1,481.766	28°24'34.31"	80°38'36.34"
LT-5 (0417)	770.240	1,481.578	28°24'32.46"	80°38'42.51"
DBN-6 (0417)	769.622	1,481.736	28°24'34.04"	80°38'49.41"

US Army Corps of Engineers
 Jacksonville District
SAFETY ON THIS JOB DEPENDS ON YOU

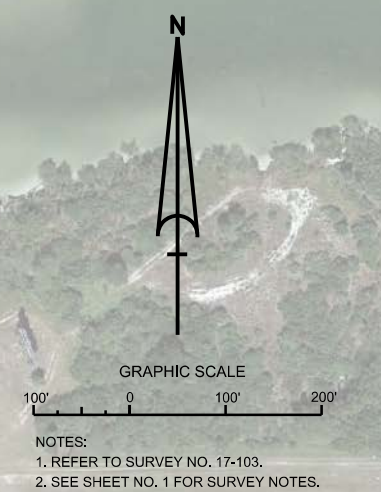
DEPARTMENT OF THE ARMY
 JACKSONVILLE DISTRICT CORPS OF ENGINEERS
 JACKSONVILLE, FLORIDA

PLAN
 EXAMINATION SURVEY FY17
 12-FOOT PROJECT
 STA. 236+00 THRU STA. 266+00 CANAVERAL BARGE CH. CUT-1

File name: I7-103-5-H006L.DGN
 Reference files:
 I7-103-5-B5-BR04L.DGN
 I7-103-5-BAV1.DGN
 I7-103-5-BAV2.DGN
 I7-103-5-BAV3.DGN
 I7-103-5-BAV4.DGN
 I7-103-5-BAV5.DGN
 I7-103-5-BAV6.DGN
 I7-103-5-BAV7.DGN
 I7-103-5-BAV8.DGN
 I7-103-5-BAV9.DGN
 I7-103-5-BAV10.DGN

Date by: GHR
 Drawn by: WRM
 Designated by: WRM
 File No: W82355-000-0000
 Date: APR 2017

PLAN
 Scale: AS SHOWN
 Drawing no. **6**
 SHEET 06 OF 16





US Army Corps of Engineers
Jacksonville District

SAFETY ON THIS JOB
DEPENDS ON YOU

AIDS TO NAVIGATION	PLANE COORDINATES		LATITUDE	LONGITUDE
	X	Y		
DBN-7 (0417)	767,755	1,481,586	23°24'32.61"	80°59'10.83"

BANANA RIVER

CANAVERAL BARGE CH. CUT-1

MATCHLINE SHEET NO. 008 STA. 296+00

MATCHLINE SHEET NO. 006 STA. 266+00

RGE. -12.5
RGE. 50
RGE. 112.5

RGE. -12.5
RGE. 50
RGE. 112.5

No.	Symbol	Zone

DEPARTMENT OF THE ARMY
JACKSONVILLE DISTRICT, CORPS OF ENGINEERS
JACKSONVILLE, FLORIDA

Checked by: GR
Designed by: WRM
DRAWN BY: WRM
File No. W12325-A-04-001
Date: APR 2017

CANAVERAL HARBOR BARGE CANAL
BREVARD COUNTY, FLORIDA
EXAMINATION SURVEY FY17
12-FOOT PROJECT

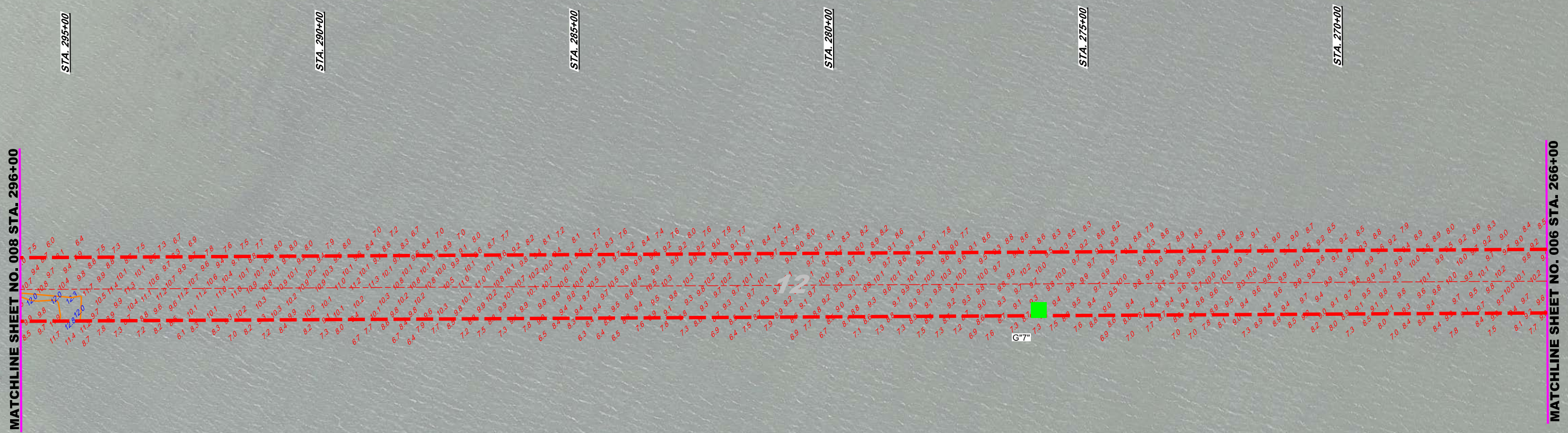
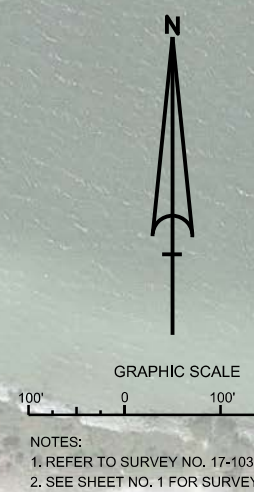
STA. 266+00 THRU STA. 296+00 CANAVERAL BARGE CH. CUT-1

PLAN

Scale: AS SHOWN

Drawing no.
7

SHEET 07 OF 16



BENNETT CAUSEWAY
MARTIN ANDERSEN BEACH LINE EXPY

AIDS TO NAVIGATION	PLANE COORDINATES		LATITUDE	LONGITUDE
	X	Y		
LT-8 (0417)	765,653	1,481,696	28°24'33.75"	80°39'33.87"



MATCHLINE SHEET NO. 009 STA. 326+00

MATCHLINE SHEET NO. 007 STA. 296+00

RGE -12.5
RGE 50
RGE 112.5

RGE -12.5
RGE 50
RGE 112.5

CANAVERAL BARGE CH. CUT-1

SEA RAY DR

BENNETT CAUSEWAY

MARTIN ANDERSEN BEACHLINE EXPY

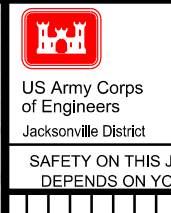
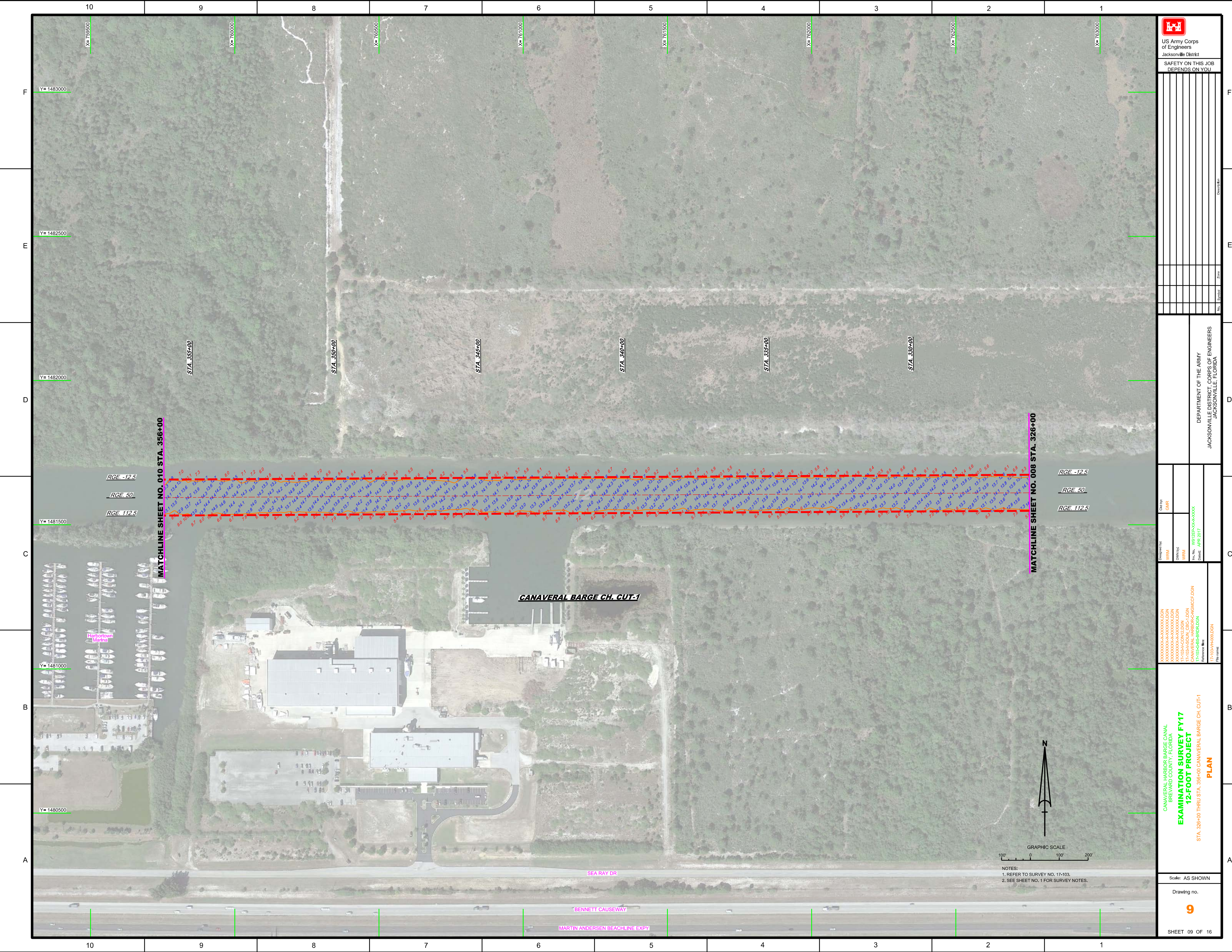
NOTES:
1. REFER TO SURVEY NO. 17-103.
2. SEE SHEET NO. 1 FOR SURVEY NOTES.

Checked By: GRL
Designed By: WRM
Drawn By: WRM
File No: 17-103-BS-RR04L.DGN
Project: CANAVERAL HARBOR CANAL
Revision: APR 2017

CANAVERAL HARBOR BARGE CANAL
BREVARD COUNTY, FLORIDA
EXAMINATION SURVEY FY17
12-FOOT PROJECT
PLAN
STA. 296+00 THRU STA. 326+00 CANAVERAL BARGE CH. CUT-1

Scale: AS SHOWN
Drawing no. 8
SHEET 08 OF 16

DEPARTMENT OF THE ARMY
JACKSONVILLE DISTRICT, CORPS OF ENGINEERS
JACKSONVILLE, FLORIDA



US Army Corps of Engineers
Jacksonville District

SAFETY ON THIS JOB
DEPENDS ON YOU

Drawn	
Checked	
Reviewed	
Date	
Scale	
Sheet No.	
Total Sheets	
Project No.	
Project Name	
Client	
Contract No.	
Contract Name	
Contract Location	
Contract Dates	
Contract Description	

DEPARTMENT OF THE ARMY
JACKSONVILLE DISTRICT, CORPS OF ENGINEERS
JACKSONVILLE, FLORIDA

MATCHLINE SHEET NO. 010 STA. 356+00

MATCHLINE SHEET NO. 008 STA. 326+00

RGE. -12.5
RGE. 50
RGE. 112.5

RGE. -12.5
RGE. 50
RGE. 112.5

CANAVERAL BARGE CH. CUT-1

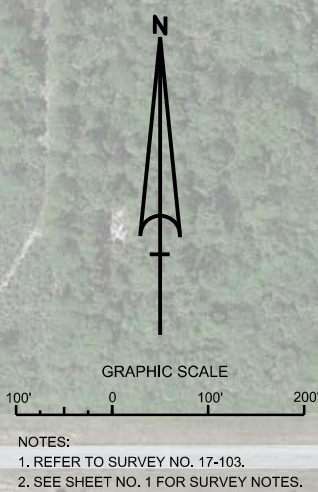
SEA RAY DR

BENNETT CAUSEWAY

MARTIN ANDERSEN BEACHLINE EXPY

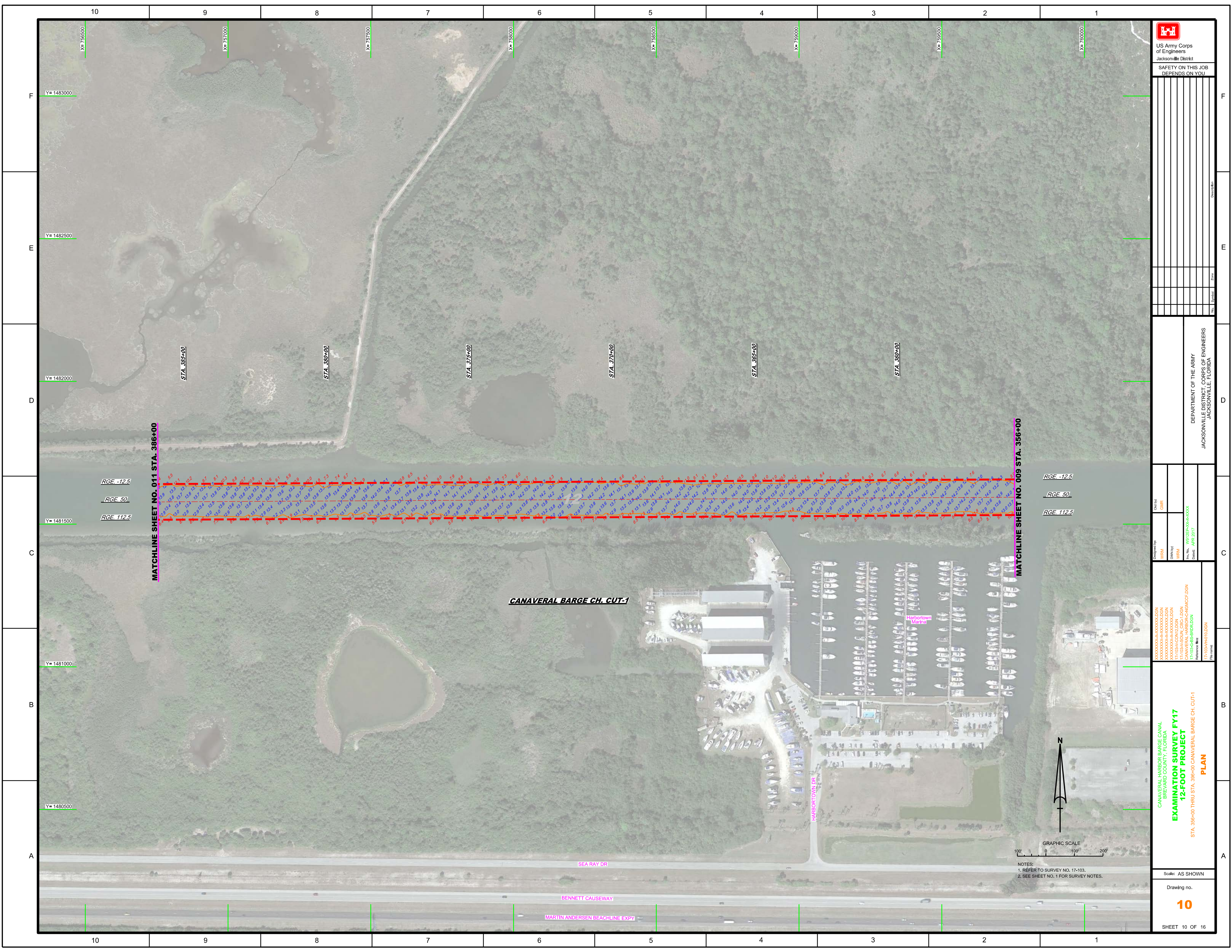

Designed by:
WRM
Checked by:
WRM
Project No.:
WRM
Contract No.:
WRM
Contract Name:
WRM
Contract Location:
WRM
Contract Dates:
WRM

CANAVERAL HARBOR BARGE CANAL
BREVARD COUNTY, FLORIDA
EXAMINATION SURVEY FY17
12-FOOT PROJECT
PLAN
STA. 326+00 THRU STA. 356+00 CANAVERAL BARGE CH. CUT-1



NOTES:
1. REFER TO SURVEY NO. 17-103.
2. SEE SHEET NO. 1 FOR SURVEY NOTES.

Scale: AS SHOWN
Drawing no.
9

US Army Corps of Engineers
Jacksonville District

SAFETY ON THIS JOB
DEPENDS ON YOU

No.	Symbol	Zone

DEPARTMENT OF THE ARMY
JACKSONVILLE DISTRICT, CORPS OF ENGINEERS
JACKSONVILLE, FLORIDA

Designated By: WRM
Drawn By: WRM
Checked: APR 2017

CANAVERAL HARBOR BARGE CANAL
BREVARD COUNTY, FLORIDA
EXAMINATION SURVEY FY17
12-FOOT PROJECT
PLAN
STA. 356+00 THRU STA. 396+00 CANAVERAL BARGE CH. CUT-1

Scale: AS SHOWN
Drawing no. **10**
SHEET 10 OF 16

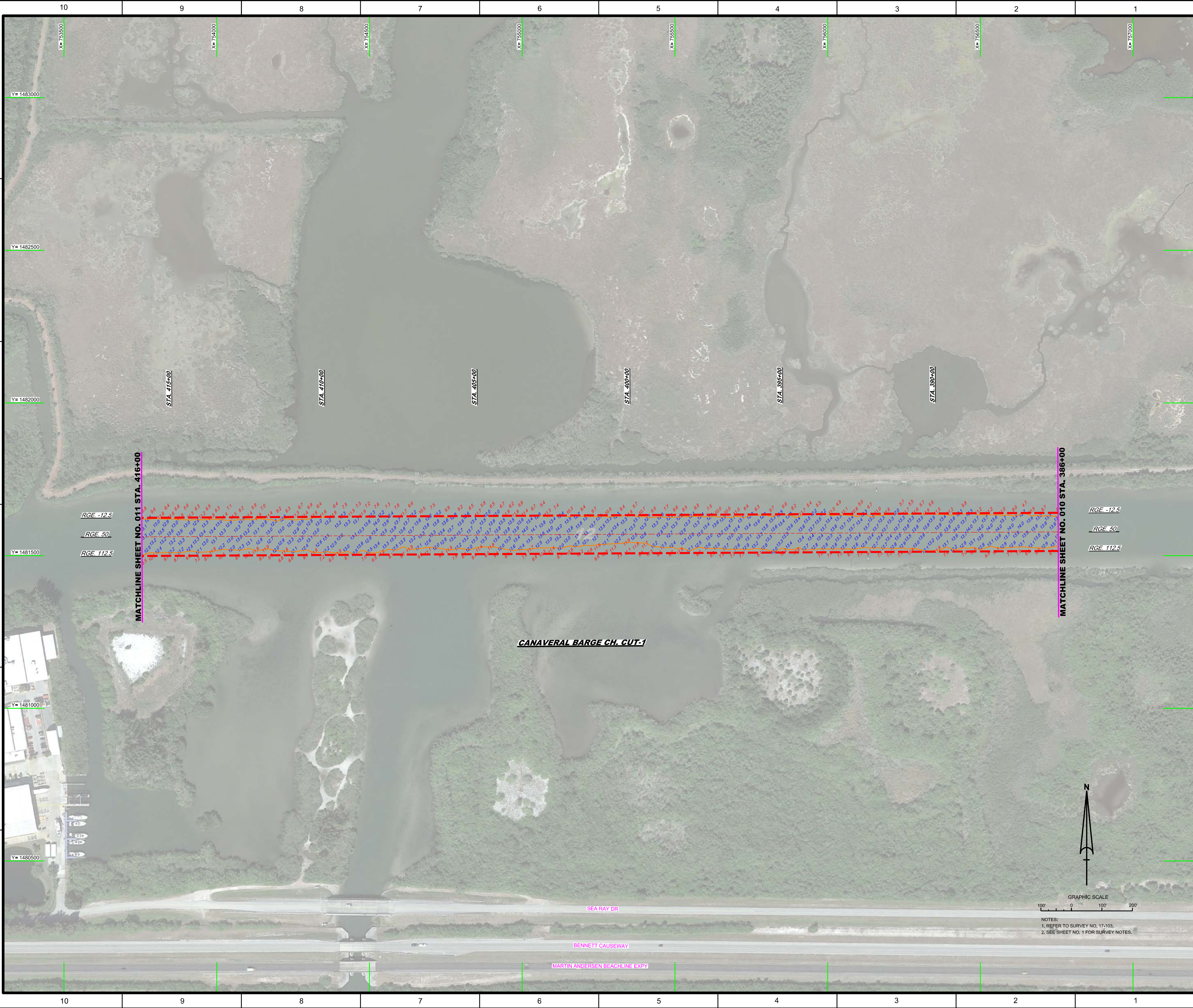
MATCHLINE SHEET NO. 011 STA. 386+00

RGE. -12.5
RGE. 50
RGE. 112.5

MATCHLINE SHEET NO. 009 STA. 356+00

RGE. -12.5
RGE. 50
RGE. 112.5

NOTES:
1. REFER TO SURVEY NO. 17-103.
2. SEE SHEET NO. 1 FOR SURVEY NOTES.



<p>US Army Corps of Engineers Jacksonville District</p>	
<p>SAFETY ON THIS JOB DEPENDS ON YOU</p>	
<p>Checked by: GHR</p>	<p>Drawn by: WRM</p>
<p>Designed by: WRM</p>	<p>Checked by: WRM</p>
<p>File Name: 17-103-6B-00000.DGN</p>	<p>File Name: 17-103-6B-00000.DGN</p>
<p>Reference File: 17-103-6B-00000.DGN</p>	<p>Reference File: 17-103-6B-00000.DGN</p>
<p>DEPARTMENT OF THE ARMY JACKSONVILLE DISTRICT, CORPS OF ENGINEERS JACKSONVILLE, FLORIDA</p>	
<p>Canaveral Harbor Barge Canal Brevard County, Florida EXAMINATION SURVEY FY17 12-FOOT PROJECT STA. 386+00 THRU STA. 416+00 CANAVERAL BARGE CH. CUT-1 PLAN</p>	
<p>Scale: AS SHOWN</p>	
<p>Drawing no. 11</p>	
<p>SHEET 11 OF 16</p>	

GRAPHIC SCALE
100' 0 100' 200'

NOTES:
1. REFER TO SURVEY NO. 17-103.
2. SEE SHEET NO. 1 FOR SURVEY NOTES.

CANAVERAL BARGE CH. CUT-1

MATCHLINE SHEET NO. 011 STA. 416+00

MATCHLINE SHEET NO. 010 STA. 386+00

RGE -12.5
RGE 50
RGE 112.5

RGE -12.5
RGE 50
RGE 112.5

SEA RAY DR

BENNETT CAUSEWAY

MARTIN ANDERSEN BEACHLINE EXPY

F
E
D
C
B
A

F
E
D
C
B
A

10 9 8 7 6 5 4 3 2 1

10 9 8 7 6 5 4 3 2 1

Y=1483000
Y=1482500
Y=1482000
Y=1481500
Y=1481000
Y=1480500

X=733500
X=734000
X=734500
X=735000
X=735500
X=736000
X=736500
X=737000

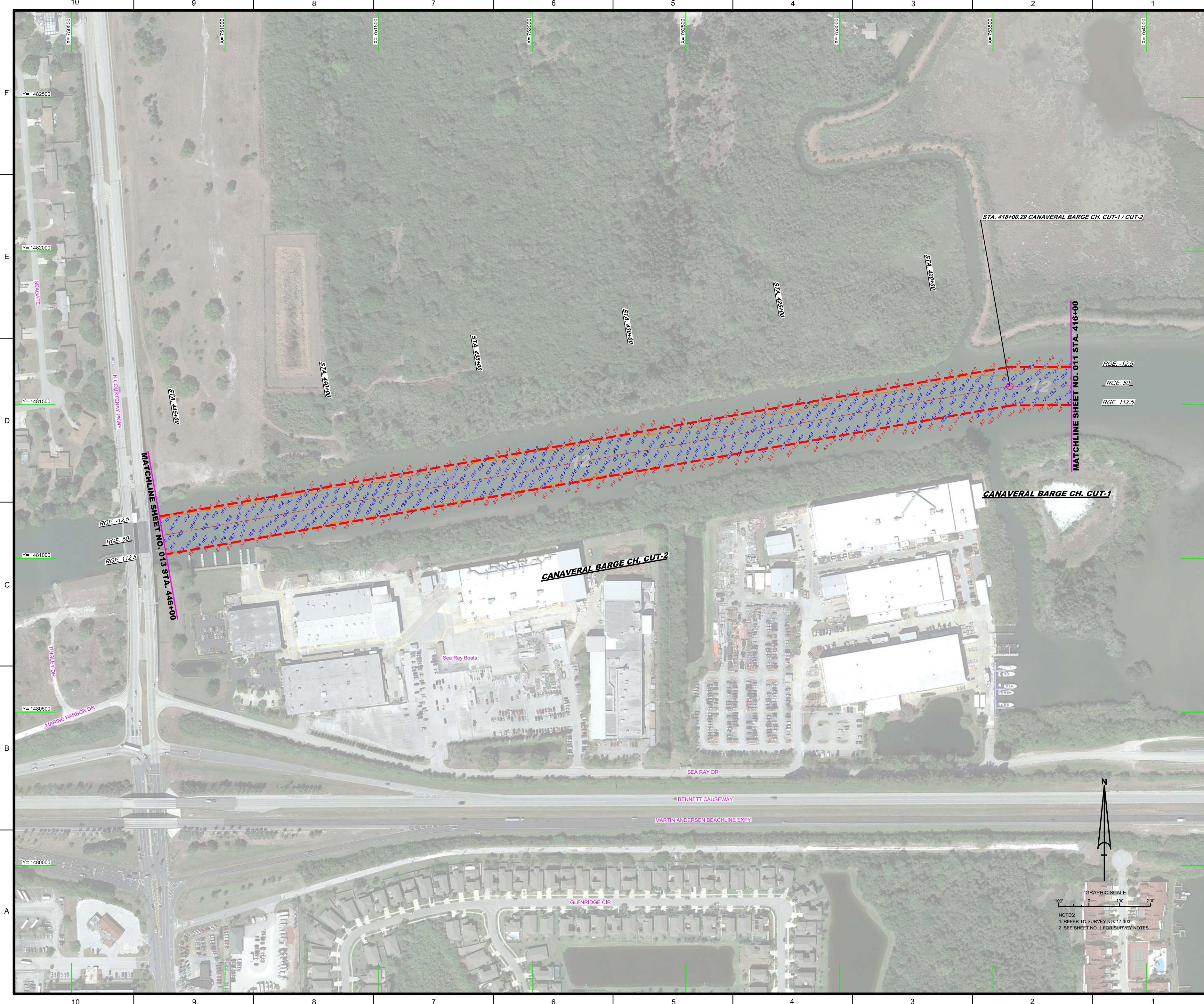
DEPARTMENT OF THE ARMY
 JACKSONVILLE DISTRICT, CORPS OF ENGINEERS
 JACKSONVILLE, FLORIDA

Checked By: GHR
 Designed By: WRM
 Drawn By: WRM
 File No: W12285-000-0000
 Date: APR 2017

XXXXXXXXXXXXXXXXXXXX.DGN
 XXXXXXXXXXXXXXXXXXXX.DGN
 XXXXXXXXXXXXXXXXXXXX.DGN
 FF-103A-001A_C08-2.DGN
 CANAVERAL HARBOR_C09A00CF.DGN
 FF-103A-001A.DGN
 FF-103A-001A.DGN

CANAVERAL HARBOR BARGE CANAL
 BREVARD COUNTY, FLORIDA
EXAMINATION SURVEY FY17
12-FOOT PROJECT
 STA. 416+00 CANAVERAL BARGE CH. CUT-1 THRU STA. 446+00 CANAVERAL BARGE CH. CUT-2
PLAN

Scale: AS SHOWN
 Drawing no. **12**
 SHEET 12 OF 16

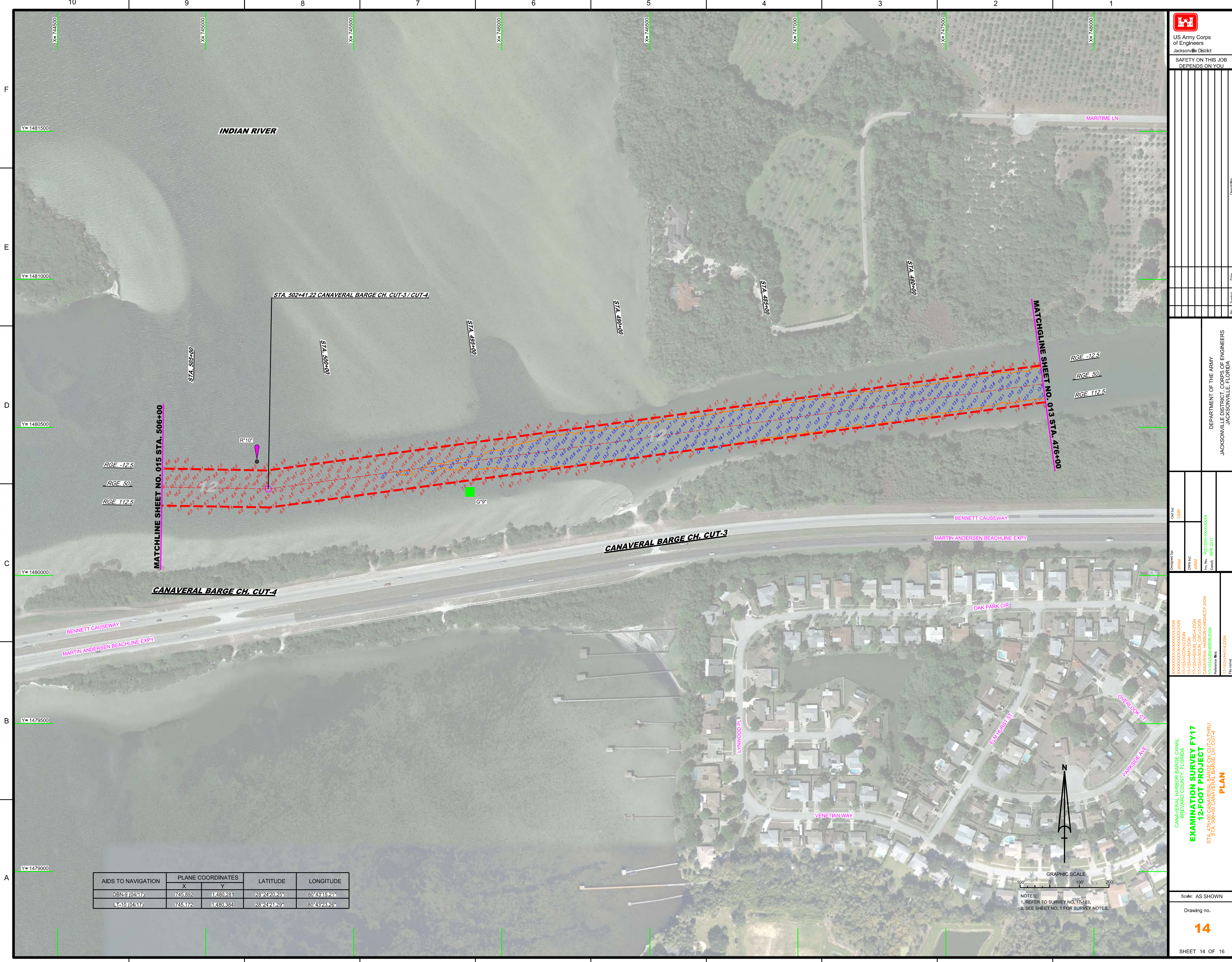


GRAPHIC SCALE
 100' 0 100' 200'
 NOTES:
 1. REFER TO SURVEY NO. 17-103.
 2. SEE SHEET NO. 1 FOR SURVEY NOTES.



US Army Corps of Engineers
Jacksonville District

SAFETY ON THIS JOB
DEPENDS ON YOU



AIDS TO NAVIGATION	PLANE COORDINATES		LATITUDE	LONGITUDE
	X	Y		
DBN-9 (04/17)	745,892	1,480,281	28°24'20.25"	80°43'15.21"
LT-10 (04/17)	745,172	1,480,384	28°24'21.29"	80°43'23.26"



NOTES:
1. REFER TO SURVEY NO. 17-103.
2. SEE SHEET NO. 1 FOR SURVEY NOTES.

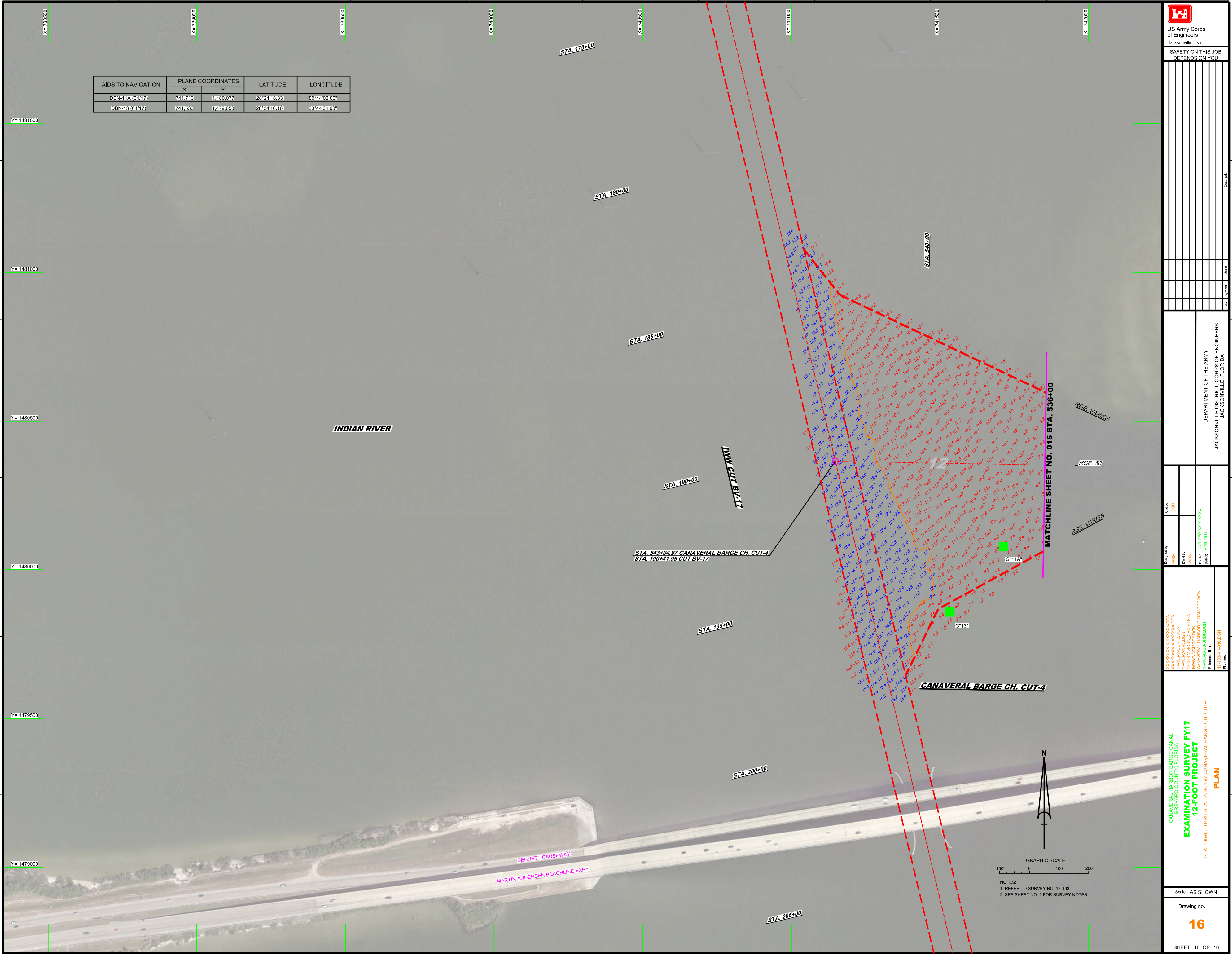
DEPARTMENT OF THE ARMY
JACKSONVILLE DISTRICT, CORPS OF ENGINEERS
JACKSONVILLE, FLORIDA

Canal No: **XXXXXX**
Designated By: **WRM**
Date: **APR 2017**

CANAVERAL HARBOR BARGE CANAL
BREVARD COUNTY, FLORIDA
EXAMINATION SURVEY FY17
12-FOOT PROJECT
STA. 476+00 CANAVERAL BARGE CH. CUT-3 THRU
STA. 506+00 CANAVERAL BARGE CH. CUT-4
PLAN

AIDS TO NAVIGATION	PLANE COORDINATES		LATITUDE	LONGITUDE
	X	Y		
DBN-11A (04/17)	741748	1480077	28°24'18.33"	80°41'02.00"
DBN-13 (04/17)	741533	1479833	28°24'16.16"	80°41'04.03"

Name	Title	Date



GRAPHIC SCALE
100' 0 100' 200'

NOTES:
1. REFER TO SURVEY NO. 17-103.
2. SEE SHEET NO. 1 FOR SURVEY NOTES.