

IIW - VOLUSIA COUNTY CUTS V-22 THRU V-40 HYDROGRAPHIC EXAM SURVEY FY17 12-FOOT PROJECT

SURVEY NOTES

1. REFER TO SURVEY NO. 17-099.
2. SOUNDINGS ARE IN FEET AND TENTHS AND REFER TO NOAA'S REPORTED MEAN LOWER LOW WATER (MLLW) OF THE 1983-2001 TIDAL EPOCH.
3. TIDAL REDUCTIONS WERE OBTAINED UTILIZING A REAL-TIME KINEMATIC (RTK) GPS AND REFERENCED TO MLLW UTILIZING A HYPACK KINEMATIC TIDE DATUM (KTD) MODEL. KTD FILE NAME IS: "VOLUSIA-BREVARD (W-O_CANAVERALHBR_2016 05 06).KTD".
4. ALL ELEVATIONS ARE BELOW THE CHART DATUM UNLESS PRECEDED BY A (+) SIGN.
5. PLANE COORDINATES ARE BASED ON THE TRANSVERSE MERCATOR PROJECTION FOR THE EAST ZONE OF FLORIDA AND REFERENCED TO NORTH AMERICAN DATUM OF 1983 (NAD83).
6. ALL STATIONING REFERS TO THE CENTERLINE OF THE CHANNEL.
7. THIS SURVEY WAS PERFORMED USING REAL-TIME KINEMATIC (RTK) GPS POSITIONING WITH THE FOLLOWING REFERENCE BASE LOCATIONS:
 REFERENCE BASE LOCATED AT "872-1147 TIDAL A" FOR CUTS V-22 THRU V-35 (OPUS PID: DK6692, NGS PID: DK6692)
 TIDE STAFF SET FROM "872-1147 TIDAL 1" (NGS PID: AQ1522)
 REFERENCE BASE LOCATED AT "872-1191 G" FOR CUTS V-36 THRU V-40 (OPUS PID: DK6693, NGS PID: DK6693)
 TIDE STAFF SET FROM "872-1191 G" (NGS PID: DK6693)
8. DEPTHS DEPICTED BY THIS SURVEY ARE REFERENCED TO MLLW, TIDAL EPOCH 1983-2001 AS REPORTED BY THE NATIONAL OCEANIC AND ATMOSPHERIC ADMINISTRATION (NOAA). NOAA'S DATUM MODEL WAS USED AND CALIBRATED TO THE PUBLISHED MLLW HEIGHTS OF THE BENCHMARKS ASSOCIATED WITH THE TIDE GAUGE SITES SPECIFIED BELOW:
 NOAA TIDAL STATION 872-1147 USED FOR CUTS V-22 THRU V-35
 NOAA TIDAL STATION 872-1191 USED FOR CUTS V-36 THRU V-40
 VERTICAL MEASUREMENTS WERE MADE USING A ROSS SMART SOUNDER MODEL 835 WITH A DUAL-FREQUENCY (28/200 KHZ) SINGLE-BEAM TRANSDUCER. ALL SOUNDINGS SHOWN ARE IN HIGH FREQUENCY.
9. AIDS TO NAVIGATION WERE LOCATED DURING THIS SURVEY.
10. THE INFORMATION DEPICTED ON THIS MAP REPRESENTS THE RESULTS OF SURVEYS MADE ON THE DATES INDICATED ABOVE AND CAN ONLY BE CONSIDERED AS INDICATING THE GENERAL CONDITIONS AT THAT TIME. THIS CHART IS SOLELY FOR THE DISTRIBUTION OF AVAILABLE DEPTHS AT THE TIME OF THE SURVEY.
11. SURVEY ACCURACY PERFORMANCE STANDARDS, QUALITY CONTROL, AND QUALITY ASSURANCE REQUIREMENTS WERE FOLLOWED DURING THIS SURVEY IN ACCORDANCE WITH USACE EM 1110-2-1003, HYDROGRAPHIC SURVEYING, 30 NOV 13.

LEGEND	
	MONUMENT
	LIGHTED BEACON
	GREEN DAYBEACON
	RED DAYBEACON
	RED LIGHTED BUOY
	GREEN LIGHTED BUOY
	CAN BUOY
	NUN BUOY
	TIDE STAFF
	PROJECT DEPTH

US Army Corps of Engineers
Jacksonville District

SAFETY ON THIS JOB
DEPENDS ON YOU

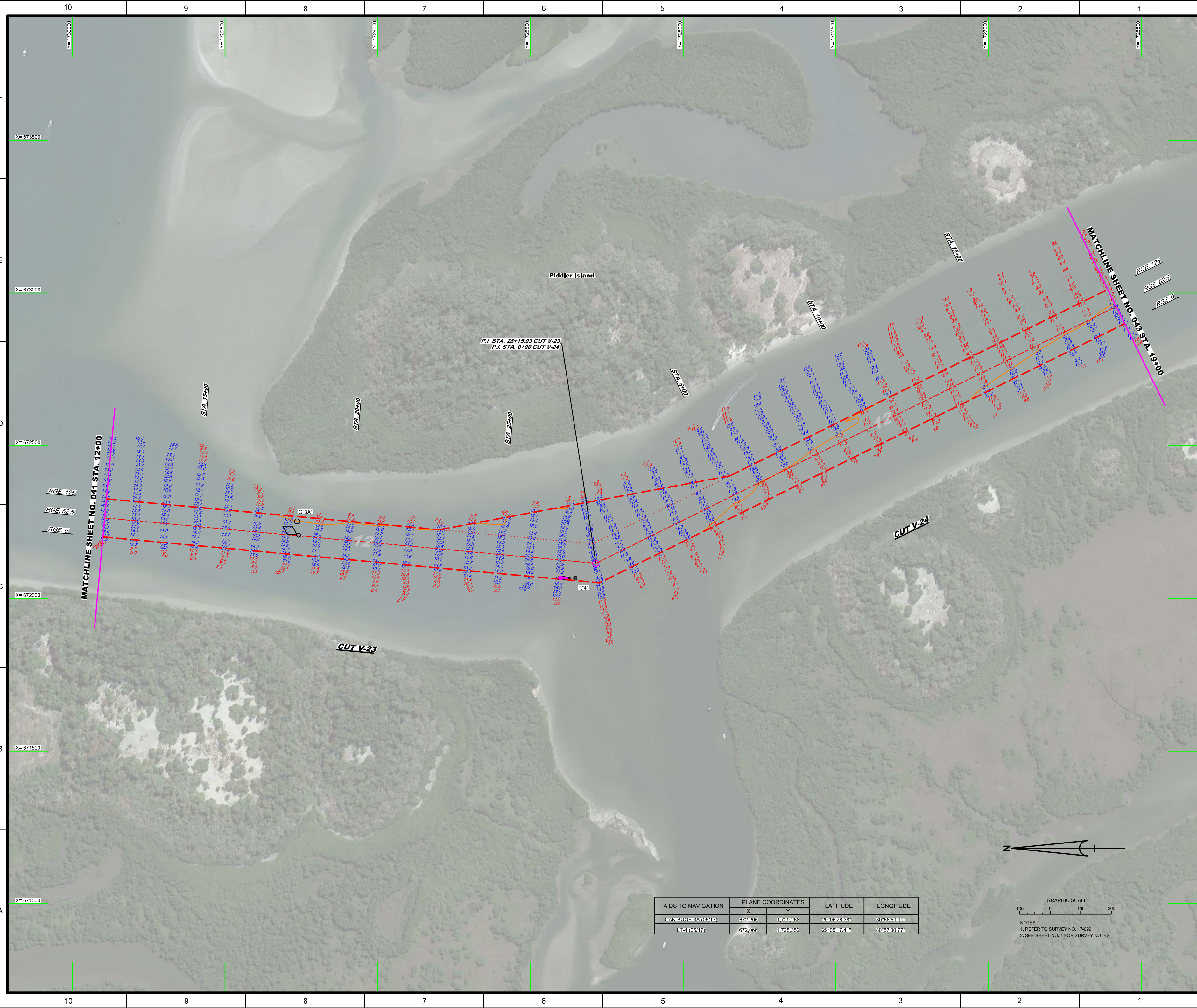
DEPARTMENT OF THE ARMY
JACKSONVILLE DISTRICT, CORPS OF ENGINEERS
JACKSONVILLE, FLORIDA

INTRACOASTAL WATERWAY
JACKSONVILLE TO MIAMI, FLORIDA
VOLUSIA COUNTY
**HYDROGRAPHIC EXAMINATION SURVEY FY17
12-FOOT PROJECT**
INDEX, LOCATION AND VICINITY
MAP

Scale: AS SHOWN

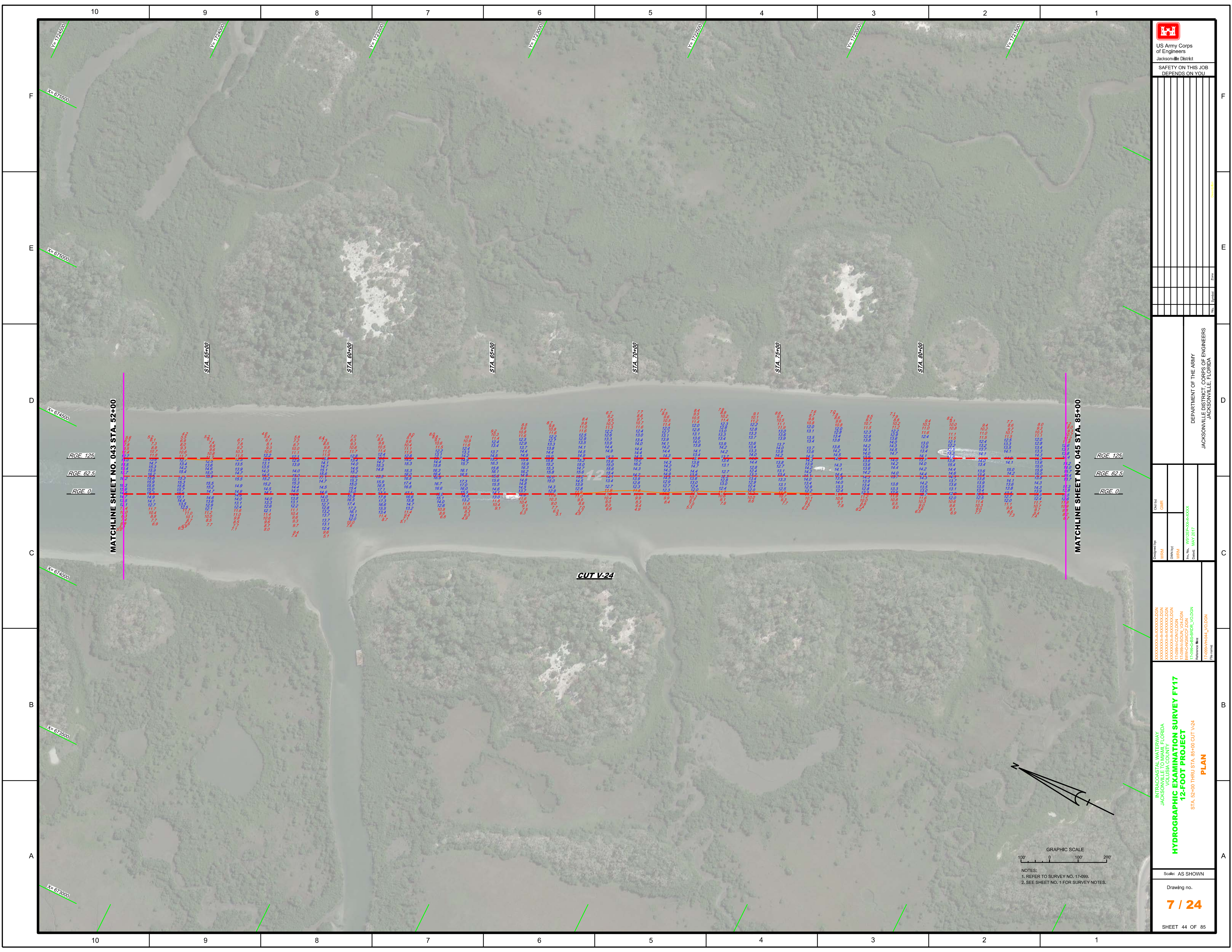
Drawing no.
1 / 24


SHEET 01 OF 85



AIDS TO NAVIGATION	PLANE COORDINATES		LATITUDE	LONGITUDE
	X	Y		
CAN BUOY 3A (0517)	672,206	1,729,258	29°05'26.38"	80°56'59.19"
1-1 (0517)	672,066	1,728,852	29°05'17.41"	80°57'00.77"

GRAPHIC SCALE
100' 0 100 200'
NOTES:
1. REFER TO SURVEY NO. 17-099.
2. SEE SHEET NO. 1 FOR SURVEY NOTES.





 US Army Corps of Engineers

 Jacksonville District

 SAFETY ON THIS JOB

 DEPENDS ON YOU

DEPARTMENT OF THE ARMY

 JACKSONVILLE DISTRICT CORPS OF ENGINEERS

 JACKSONVILLE, FLORIDA

INTRACOASTAL WATERWAY

 JACKSONVILLE TO MIAMI, FLORIDA

 VOLUSIA COUNTY

HYDROGRAPHIC EXAMINATION SURVEY FY17

12-FOOT PROJECT

 STA. 52+00 THRU STA. 85+00 CUT V-24

PLAN

Scale: AS SHOWN

 Drawing no.

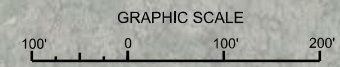
7 / 24

 SHEET 44 OF 85

MATCHLINE SHEET NO. 043 STA. 52+00

MATCHLINE SHEET NO. 045 STA. 85+00

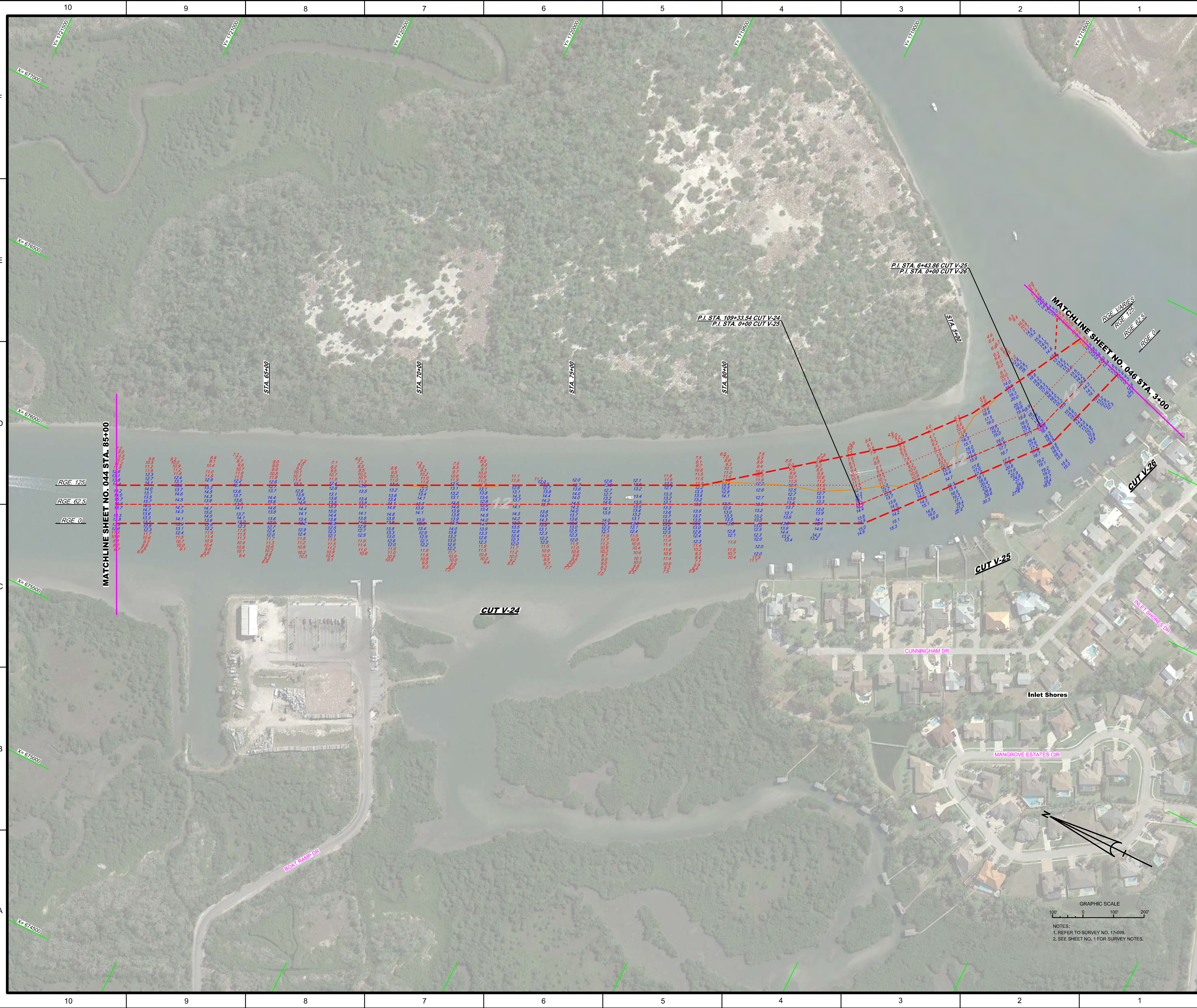
CUT V-24



NOTES:

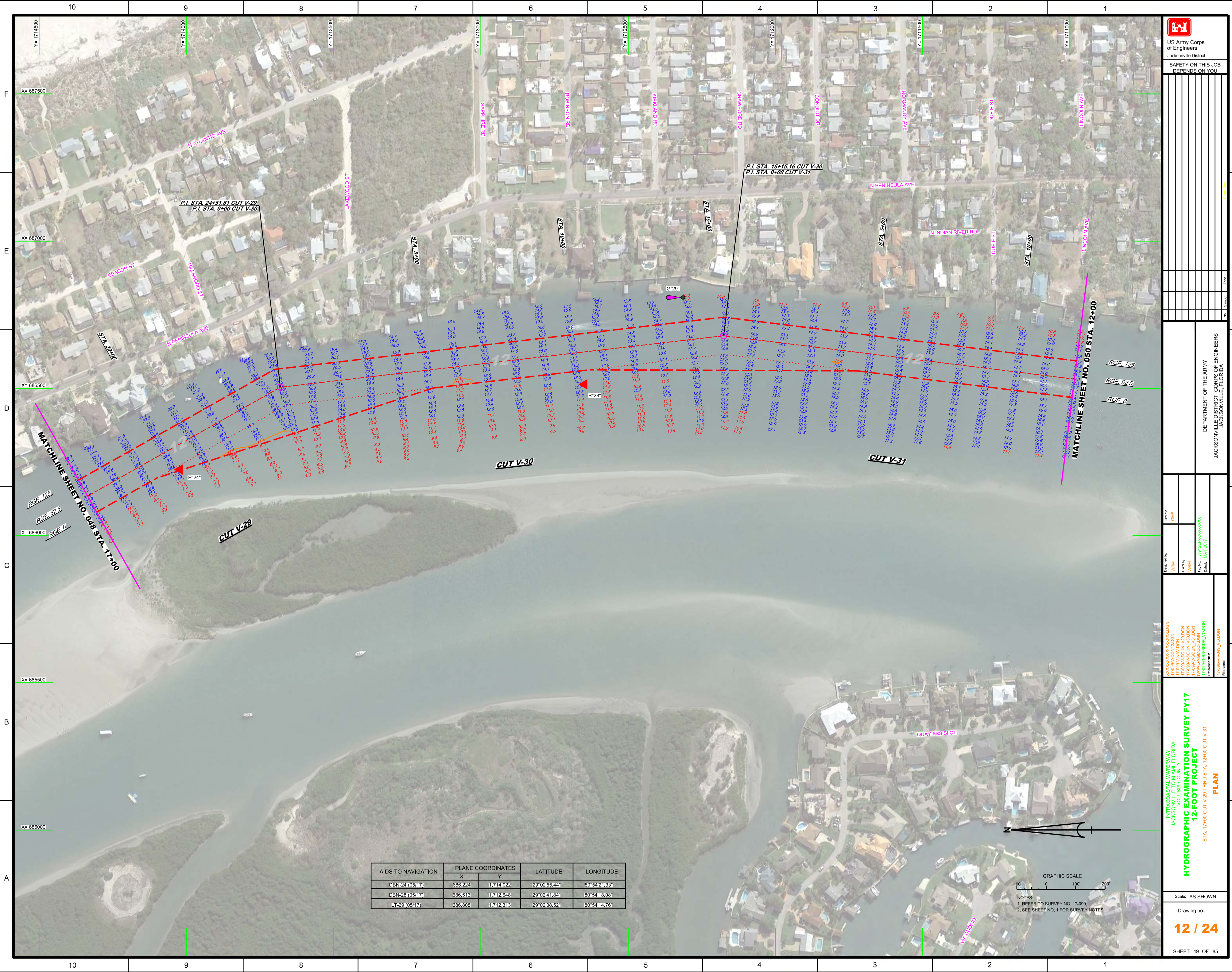
 1. REFER TO SURVEY NO. 17-0990.

 2. SEE SHEET NO. 1 FOR SURVEY NOTES.

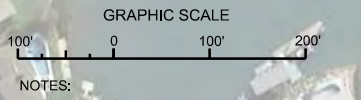


GRAPHIC SCALE
100' 0 100' 200'

NOTES:
1. REFER TO SURVEY NO. 17-099.
2. SEE SHEET NO. 1 FOR SURVEY NOTES.



AIDS TO NAVIGATION	PLANE COORDINATES		LATITUDE	LONGITUDE
	X	Y		
DBN-24 (0517)	686,224	1714,022	29°02'55.44"	80°54'21.33"
DBN-28 (0517)	686,513	1712,648	29°02'41.84"	80°54'18.08"
IN-29 (0517)	686,806	1712,313	29°02'38.52"	80°54'14.76"



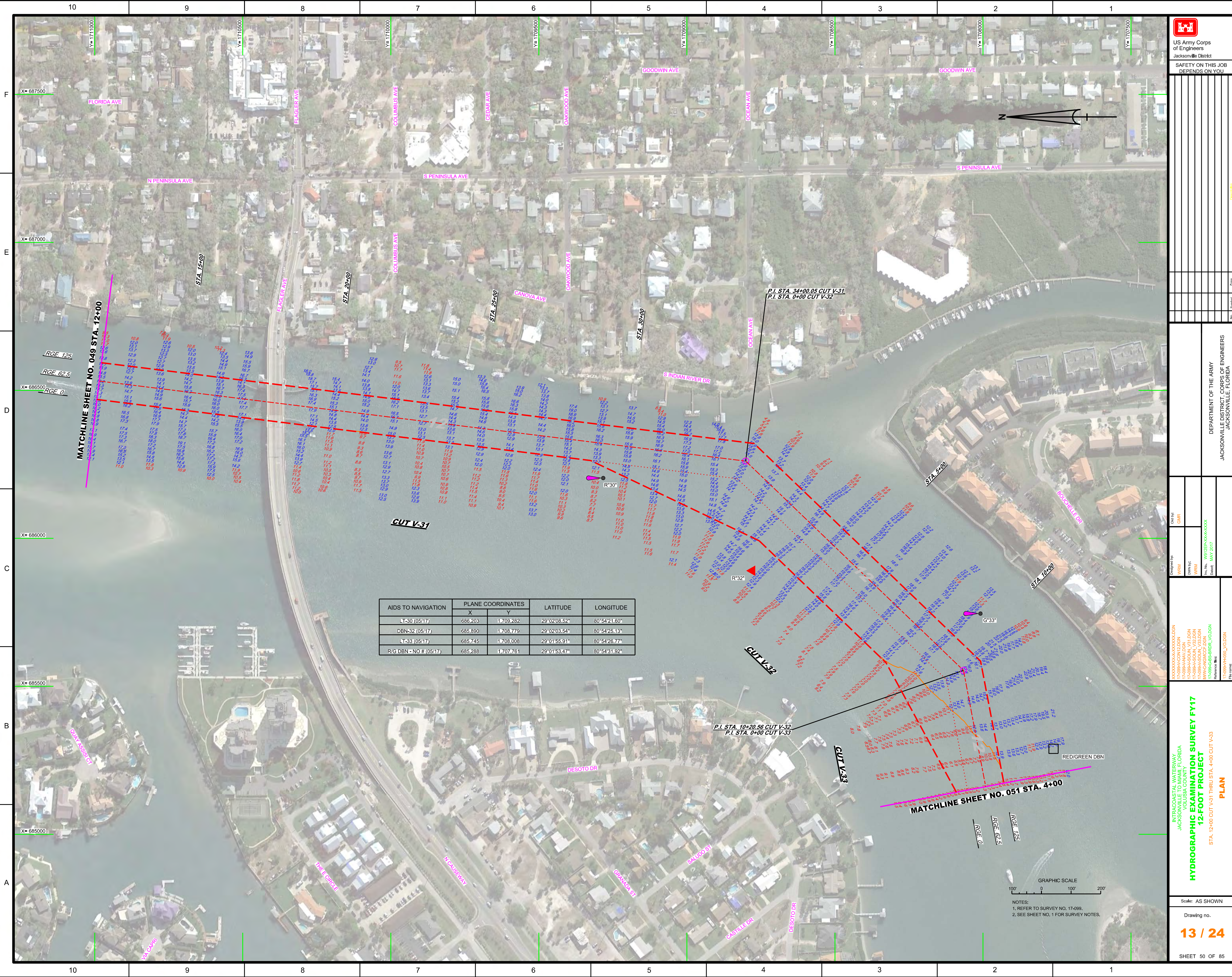
NOTES:
1. REFER TO SURVEY NO. 17-099.
2. SEE SHEET NO. 1 FOR SURVEY NOTES.


DEPARTMENT OF THE ARMY
JACKSONVILLE DISTRICT, CORPS OF ENGINEERS
JACKSONVILLE, FLORIDA

Call by: GHR
Designed by: WRM
Drawn by: WRM
File No.: 17-099-000-000-000-000
Date: MAY 2017

INTRACOASTAL WATERWAY
JACKSONVILLE TO MIAMI, FLORIDA
VOLUSIA COUNTY
HYDROGRAPHIC EXAMINATION SURVEY FY17
12-FOOT PROJECT
STA. 17+00 CUT V-29 THRU STA. 12+00 CUT V-31
PLAN

Scale: AS SHOWN
Drawing no.
12 / 24
SHEET 49 OF 85





 US Army Corps of Engineers

 Jacksonville District

 SAFETY ON THIS JOB

 DEPENDS ON YOU

DEPARTMENT OF THE ARMY

 JACKSONVILLE DISTRICT, CORPS OF ENGINEERS

 JACKSONVILLE, FLORIDA

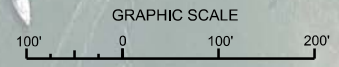
HYDROGRAPHIC EXAMINATION SURVEY FY17

12-FOOT PROJECT

 STA. 12+00 CUT V-31 THRU STA. 4+00 CUT V-33

PLAN

AIDS TO NAVIGATION	PLANE COORDINATES		LATITUDE	LONGITUDE
	X	Y		
LT-30 (05/17)	686,203	1,709,262	29°02'08.52"	80°54'21.60"
DBN-32 (05/17)	686,890	1,708,779	29°02'03.54"	80°54'25.13"
LT-33 (05/17)	685,745	1,708,008	29°01'55.91"	80°54'26.77"
R/G DBN-NO # (05/17)	686,288	1,707,761	29°01'53.47"	80°54'31.92"

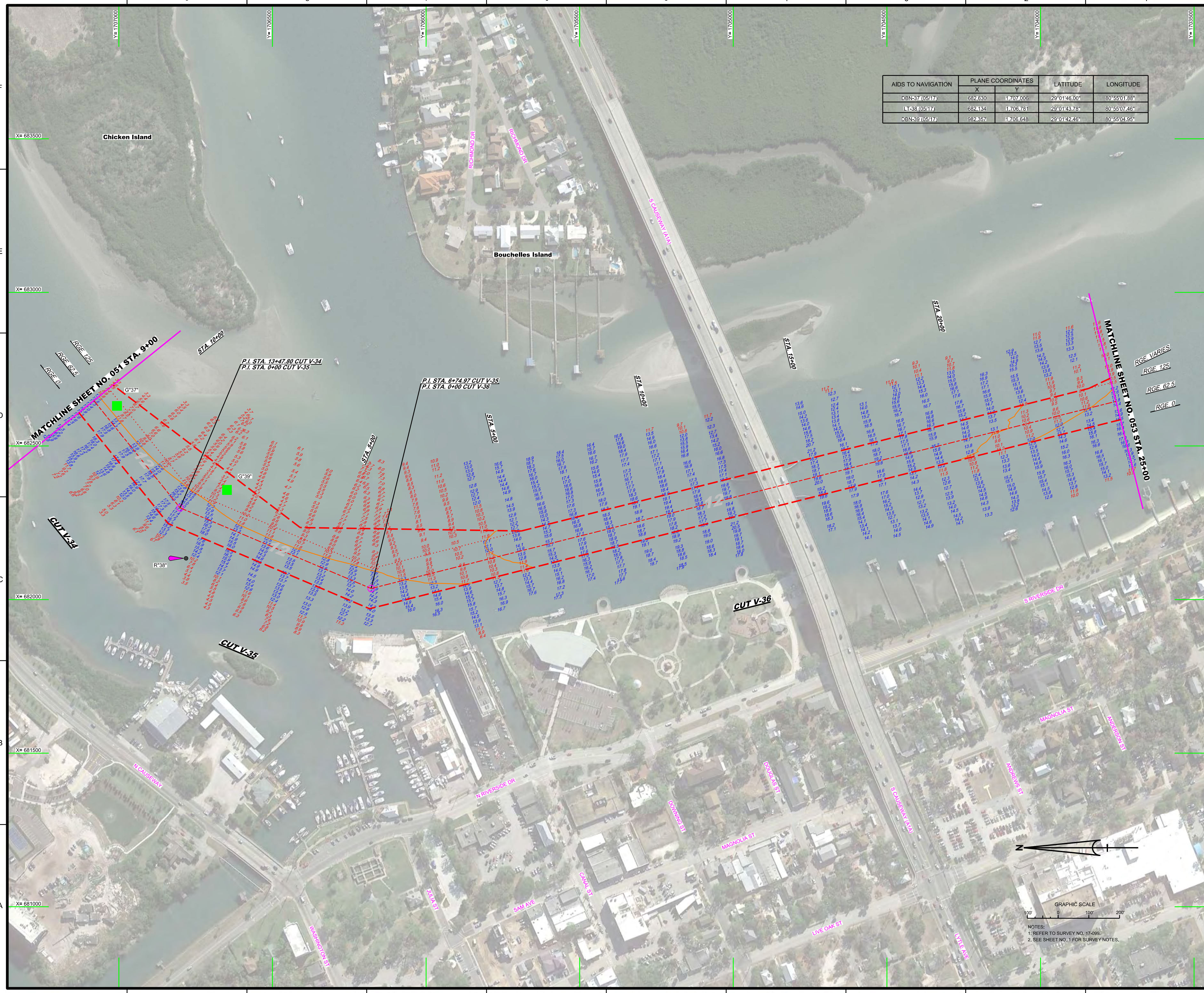


NOTES:

 1. REFER TO SURVEY NO. 17-099.

 2. SEE SHEET NO. 1 FOR SURVEY NOTES.

AIDS TO NAVIGATION	PLANE COORDINATES		LATITUDE	LONGITUDE
	X	Y		
DBN-37 (0517)	682,630	1707,006	29°01'46.00"	80°55'01.88"
DBN-38 (0517)	682,134	1705,781	29°01'43.78"	80°55'07.46"
DBN-33 (0517)	982,357	1705,648	29°01'42.45"	80°55'04.95"



DEPARTMENT OF THE ARMY
JACKSONVILLE DISTRICT, CORPS OF ENGINEERS
JACKSONVILLE, FLORIDA

Drawn by: GHR
Checked by: GHR
Date: MAY 2017

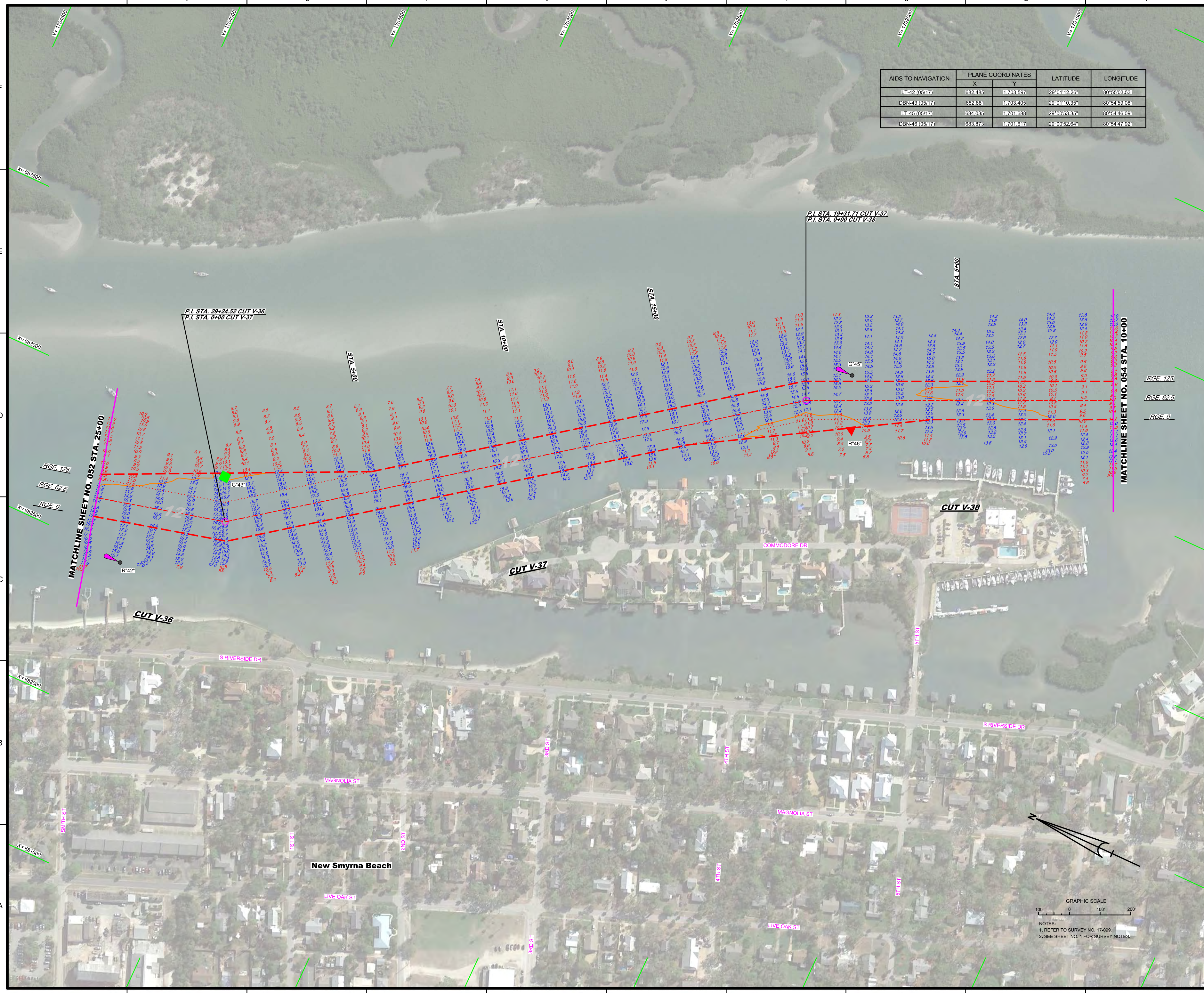
INTRACOASTAL WATERWAY
JACKSONVILLE TO MIAMI, FLORIDA
VOLUSIA COUNTY
HYDROGRAPHIC EXAMINATION SURVEY FY17
12-FOOT PROJECT
STA. 9+00 CUT V-34 THRU STA. 25+00 CUT V-36
PLAN

Scale: AS SHOWN
Drawing no.
15 / 24
SHEET 52 OF 85

GRAPHIC SCALE
0 100 200

NOTES:
1. REFER TO SURVEY NO. 17-099.
2. SEE SHEET NO. 1 FOR SURVEY NOTES.

AIDS TO NAVIGATION	PLANE COORDINATES		LATITUDE	LONGITUDE
	X	Y		
L-42 (0517)	682.485	1703.597	29°01'22.6"	80°55'03.53"
DBN-43 (0517)	682.881	1703.405	29°01'10.85"	80°54'59.08"
L-45 (0517)	684.035	1701.688	29°00'53.35"	80°54'46.09"
DBN-46 (0517)	688.676	1701.617	29°00'6.264"	80°54'47.92"



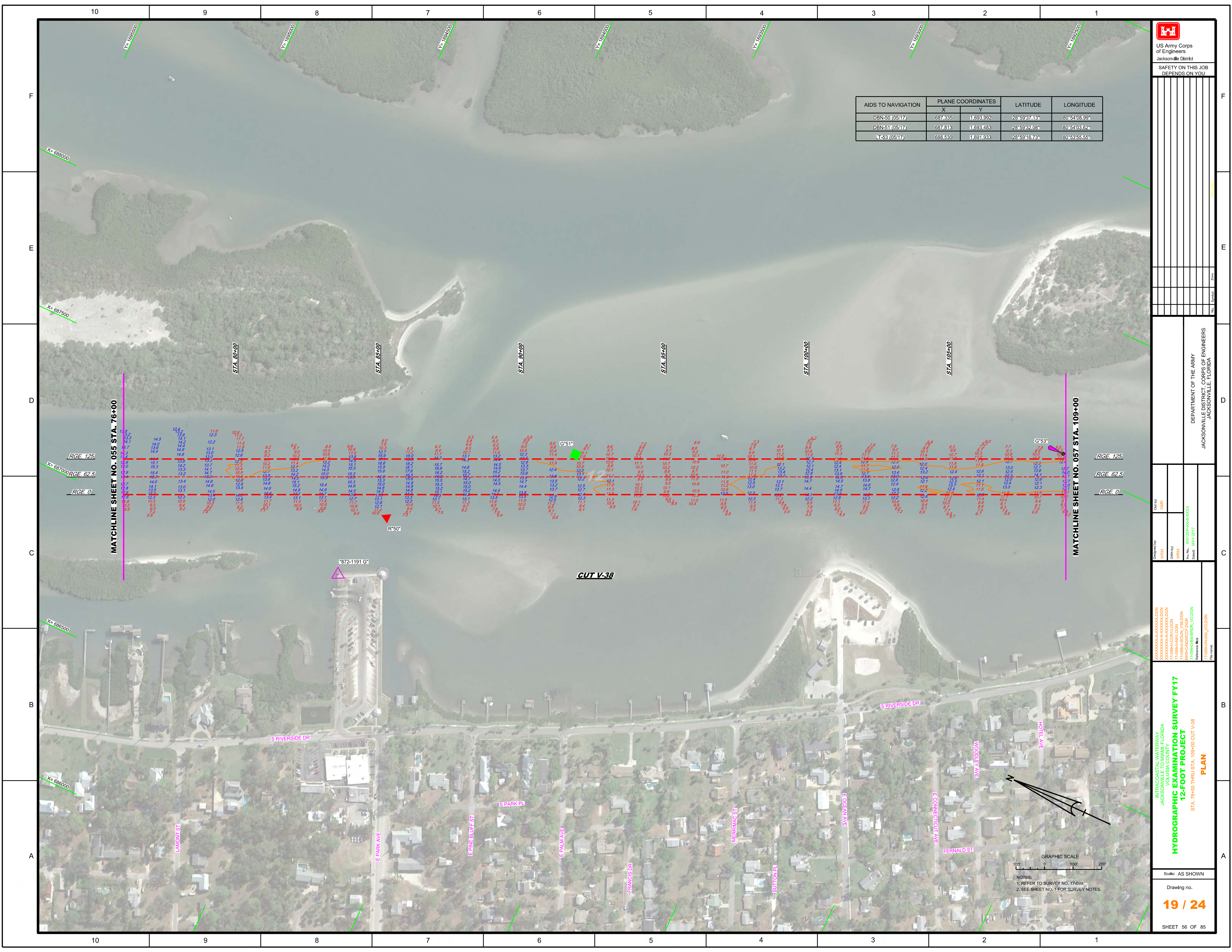
DEPARTMENT OF THE ARMY
JACKSONVILLE DISTRICT, CORPS OF ENGINEERS
JACKSONVILLE, FLORIDA

Checked by: GHR
Designed by: WRM
Drawn by: WRM
File No: W170999A-SOAL_V07.DGN
Project: WAC-CANAL-03A
Date: MAY 2017


XXXXXXXXXXXXXXXXXXXX
W170999A-CONTR.DGN
W170999A-SOAL_V06.DGN
W170999A-SOAL_V07.DGN
W170999A-SOAL_V08.DGN
W170999A-SOAL_V09.DGN
W170999A-SOAL_V10.DGN
W170999A-SOAL_V11.DGN
W170999A-SOAL_V12.DGN
W170999A-SOAL_V13.DGN
W170999A-SOAL_V14.DGN
W170999A-SOAL_V15.DGN
W170999A-SOAL_V16.DGN
W170999A-SOAL_V17.DGN
W170999A-SOAL_V18.DGN
W170999A-SOAL_V19.DGN
W170999A-SOAL_V20.DGN
W170999A-SOAL_V21.DGN
W170999A-SOAL_V22.DGN
W170999A-SOAL_V23.DGN
W170999A-SOAL_V24.DGN
W170999A-SOAL_V25.DGN
W170999A-SOAL_V26.DGN
W170999A-SOAL_V27.DGN
W170999A-SOAL_V28.DGN
W170999A-SOAL_V29.DGN
W170999A-SOAL_V30.DGN
W170999A-SOAL_V31.DGN
W170999A-SOAL_V32.DGN
W170999A-SOAL_V33.DGN
W170999A-SOAL_V34.DGN
W170999A-SOAL_V35.DGN
W170999A-SOAL_V36.DGN
W170999A-SOAL_V37.DGN
W170999A-SOAL_V38.DGN
W170999A-SOAL_V39.DGN
W170999A-SOAL_V40.DGN
W170999A-SOAL_V41.DGN
W170999A-SOAL_V42.DGN
W170999A-SOAL_V43.DGN
W170999A-SOAL_V44.DGN
W170999A-SOAL_V45.DGN
W170999A-SOAL_V46.DGN
W170999A-SOAL_V47.DGN
W170999A-SOAL_V48.DGN
W170999A-SOAL_V49.DGN
W170999A-SOAL_V50.DGN
W170999A-SOAL_V51.DGN
W170999A-SOAL_V52.DGN
W170999A-SOAL_V53.DGN
W170999A-SOAL_V54.DGN
W170999A-SOAL_V55.DGN
W170999A-SOAL_V56.DGN
W170999A-SOAL_V57.DGN
W170999A-SOAL_V58.DGN
W170999A-SOAL_V59.DGN
W170999A-SOAL_V60.DGN
W170999A-SOAL_V61.DGN
W170999A-SOAL_V62.DGN
W170999A-SOAL_V63.DGN
W170999A-SOAL_V64.DGN
W170999A-SOAL_V65.DGN
W170999A-SOAL_V66.DGN
W170999A-SOAL_V67.DGN
W170999A-SOAL_V68.DGN
W170999A-SOAL_V69.DGN
W170999A-SOAL_V70.DGN
W170999A-SOAL_V71.DGN
W170999A-SOAL_V72.DGN
W170999A-SOAL_V73.DGN
W170999A-SOAL_V74.DGN
W170999A-SOAL_V75.DGN
W170999A-SOAL_V76.DGN
W170999A-SOAL_V77.DGN
W170999A-SOAL_V78.DGN
W170999A-SOAL_V79.DGN
W170999A-SOAL_V80.DGN
W170999A-SOAL_V81.DGN
W170999A-SOAL_V82.DGN
W170999A-SOAL_V83.DGN
W170999A-SOAL_V84.DGN
W170999A-SOAL_V85.DGN
W170999A-SOAL_V86.DGN
W170999A-SOAL_V87.DGN
W170999A-SOAL_V88.DGN
W170999A-SOAL_V89.DGN
W170999A-SOAL_V90.DGN
W170999A-SOAL_V91.DGN
W170999A-SOAL_V92.DGN
W170999A-SOAL_V93.DGN
W170999A-SOAL_V94.DGN
W170999A-SOAL_V95.DGN
W170999A-SOAL_V96.DGN
W170999A-SOAL_V97.DGN
W170999A-SOAL_V98.DGN
W170999A-SOAL_V99.DGN
W170999A-SOAL_V100.DGN

INTRACOASTAL WATERWAY
JACKSONVILLE TO MIAMI, FLORIDA
VOLUSIA COUNTY
HYDROGRAPHIC EXAMINATION SURVEY FY17
12-FOOT PROJECT
STA. 25+00 CUT V-36 THRU STA. 10+00 CUT V-38
PLAN

NOTES:
1. REFER TO SURVEY NO. 17-099.
2. SEE SHEET NO. 1 FOR SURVEY NOTES.



AIDS TO NAVIGATION	PLANE COORDINATES		LATITUDE	LONGITUDE
	X	Y		
DBN-50 (05/17)	687.835	1.693.992	28°59'37.13"	80°54'08.99"
DBN-51 (05/17)	687.813	1.693.463	28°59'32.06"	80°54'03.62"
LT-53 (05/17)	688.530	1.691.933	28°59'16.73"	80°53'55.55"

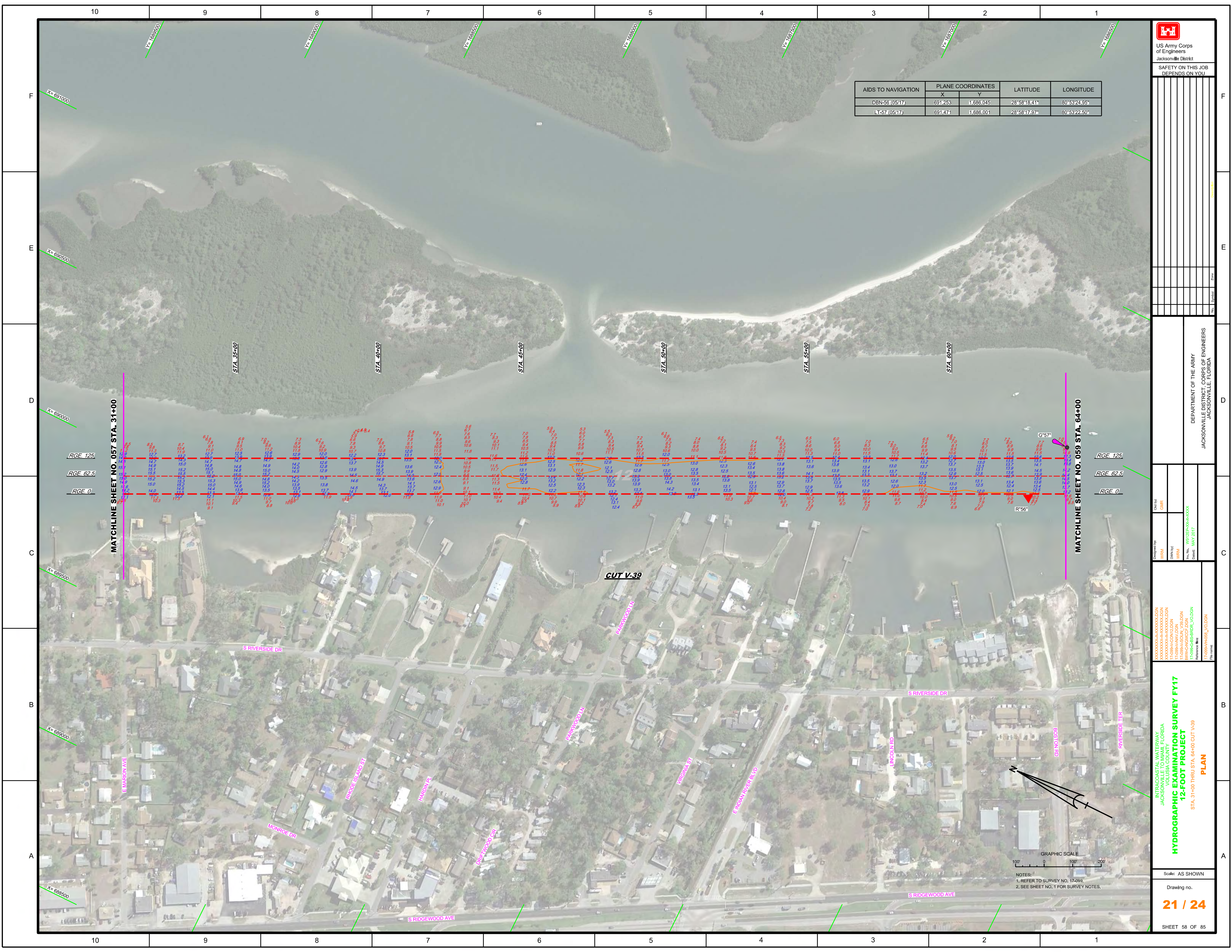


US Army Corps of Engineers
Jacksonville District
SAFETY ON THIS JOB
DEPENDS ON YOU

DEPARTMENT OF THE ARMY JACKSONVILLE DISTRICT, CORPS OF ENGINEERS JACKSONVILLE, FLORIDA	<p>Drawn by: GHR</p> <p>Checked by: WRM</p> <p>Designated by: WRM</p> <p>File No.: W12255-000-0000</p> <p>Date: MAY 2017</p>
<p>INTRACOASTAL WATERWAY JACKSONVILLE TO MIAMI, FLORIDA VOLUSIA COUNTY HYDROGRAPHIC EXAMINATION SURVEY FY17 12-FOOT PROJECT STA. 76+00 THRU STA. 109+00 CUT V-38 PLAN</p>	
<p>Scale: AS SHOWN</p> <p>Drawing no. 19 / 24</p> <p>SHEET 56 OF 85</p>	

GRAPHIC SCALE
100' 0 100' 200'

NOTES:
1. REFER TO SURVEY NO. 17-095.
2. SEE SHEET NO. 1 FOR SURVEY NOTES.



AIDS TO NAVIGATION	PLANE COORDINATES		LATITUDE	LONGITUDE
	X	Y		
DBN-56 (0517)	691.253	1.686.045	28°58'18.41"	80°53'24.95"
LT-57 (0517)	691.471	1.686.001	28°58'17.97"	80°53'22.50"

US Army Corps of Engineers
 Jacksonville District
 SAFETY ON THIS JOB
 DEPENDS ON YOU

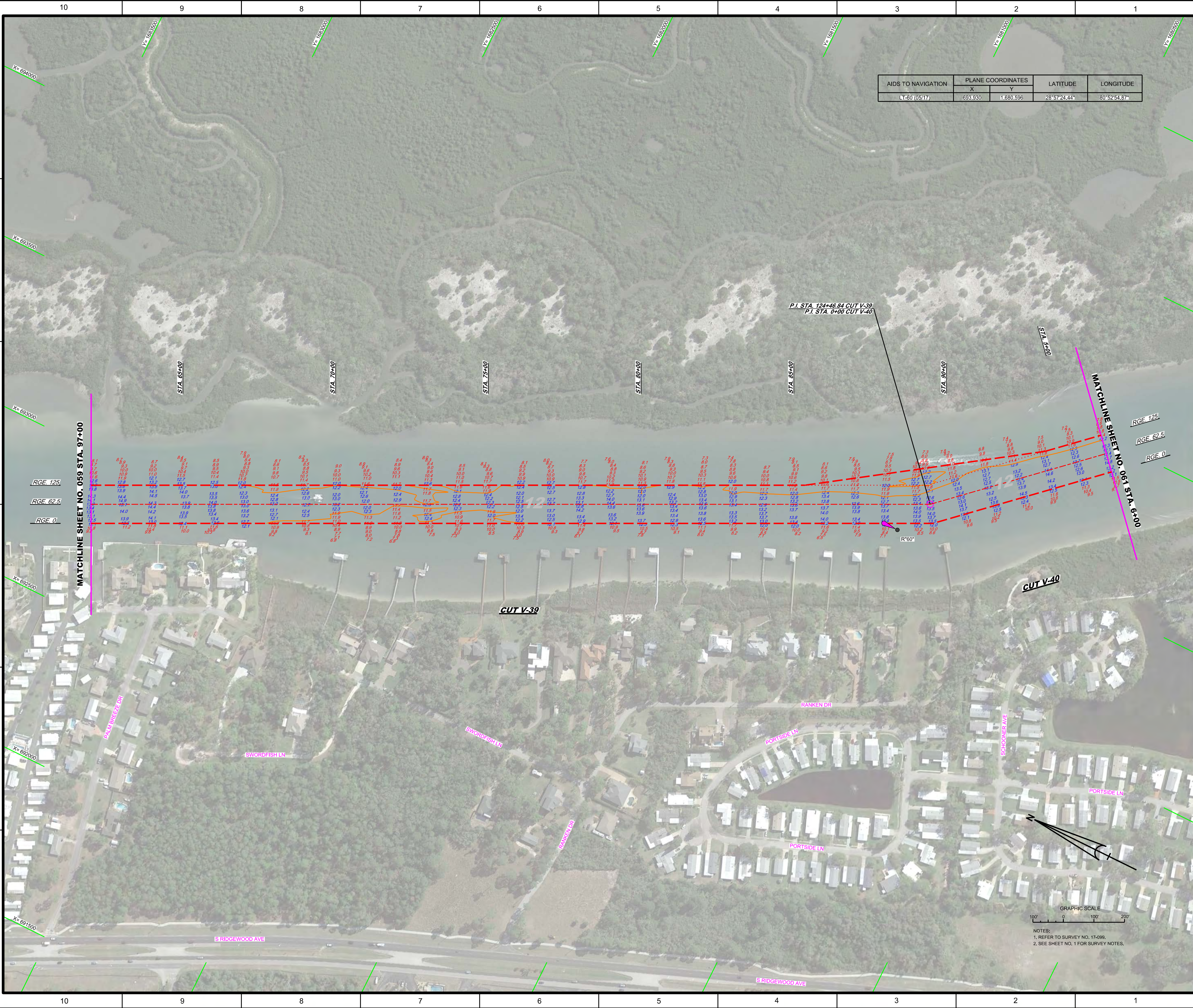
DEPARTMENT OF THE ARMY
 JACKSONVILLE DISTRICT, CORPS OF ENGINEERS
 JACKSONVILLE, FLORIDA

INTRACOASTAL WATERWAY
 JACKSONVILLE TO MIAMI, FLORIDA
 VOLUSIA COUNTY
HYDROGRAPHIC EXAMINATION SURVEY FY17
12-FOOT PROJECT
 STA. 31+00 THRU STA. 64+00 CUT V-39
PLAN



NOTES:
 1. REFER TO SURVEY NO. 17-099.
 2. SEE SHEET NO. 1 FOR SURVEY NOTES.

Scale: AS SHOWN
 Drawing no.
21 / 24
 SHEET 58 OF 85



AIDS TO NAVIGATION	PLANE COORDINATES		LATITUDE	LONGITUDE
	X	Y		
LT-50 (05/17)	693.680	1,680.596	28°57'24.44"	80°52'54.87"

US Army Corps of Engineers
Jacksonville District

SAFETY ON THIS JOB
DEPENDS ON YOU

DEPARTMENT OF THE ARMY
JACKSONVILLE DISTRICT, CORPS OF ENGINEERS
JACKSONVILLE, FLORIDA

INTRA-COASTAL WATERWAY
JACKSONVILLE TO MIAMI, FLORIDA
VOLUSIA COUNTY
HYDROGRAPHIC EXAMINATION SURVEY FY17
12-FOOT PROJECT
STA. 97+00 CUT V-39 THRU STA. 6+00 CUT V-40
PLAN

Scale: AS SHOWN
Drawing no. **23 / 24**
SHEET 60 OF 85

GRAPHIC SCALE
0 100' 200'

NOTES:
1. REFER TO SURVEY NO. 17-099.
2. SEE SHEET NO. 1 FOR SURVEY NOTES.

